



A new ophiacanthid brittle star (Echinodermata, Ophiuroidea) from sublittoral crinoid and seagrass communities of late Maastrichtian age in the southeast Netherlands

Ben Thuy¹, Lea Numberger-Thuy¹ and John W.M. Jagt²

¹Department of Palaeontology, Natural History Museum Luxembourg, Luxembourg City, Luxembourg

²Natuurhistorisch Museum Maastricht, Maastricht, The Netherlands

ABSTRACT

A new species of brittle star, *Ophiomitrella floorae*, is recorded from the lower two meters of the Gronsveld Member (Maastricht Formation), of late Maastrichtian age (c. 66.7 Ma). These relatively fine-grained biocalcarenes reflect shallow-water deposition in a sheltered setting with a relatively firm sea floor and clear waters, under middle sublittoral and subtropical conditions. Associated echinoderm taxa comprise more robust, sturdy-plated ophiomusaid and ophiodermatid brittle stars and numerous bourgueticrinine sea lilies. The new brittle star described herein belongs to a family whose present-day members are predominantly restricted to bathyal depths. Its small size and the exceptional preservation of a single articulated specimen partially wrapped around the stalk of a bourgueticrinine suggest that *O. floorae* n. sp. was probably epizoic and specifically associated with stalked crinoids.

Subjects Paleontology, Taxonomy, Zoology

Keywords Ophiacanthidae, Maastricht formation, Deep-water taxa, Epizoic lifestyle, Cretaceous

Submitted 2 April 2020
Accepted 16 July 2020
Published 24 August 2020

Corresponding author
Ben Thuy, bthuy@mnhn.lu

Academic editor
Mark Young

Additional Information and
Declarations can be found on
page 12

DOI 10.7717/peerj.9671

© Copyright
2020 Thuy et al.

Distributed under
Creative Commons CC-BY 4.0

OPEN ACCESS

INTRODUCTION

During recent decades, there has been a renewed interest in macrofossil assemblages from Upper Cretaceous (Campanian–Maastrichtian) strata in the type area of the Maastrichtian Stage (southeast Netherlands, northeast Belgium; *Felder, 1975a; Felder, 1975b*). This has resulted in the recovery of numerous previously unrecorded taxa, particularly amongst echinoderms. The former ENCI-Heidelberg Cement Group quarry at Sint-Pietersberg, south of the city of Maastricht (*Figs. 1 and 2*), is a key locality in the area. Here the lower/middle portion of the Maastricht Formation (Valkenburg, Gronsveld, Schiepersberg and Emael members) has yielded a range of brittlestar taxa over recent years, amongst which sturdy-plated ophiomusoids and ophiodermatids predominate (*Jagt, 1999c; Jagt, 1999d; Jagt, 2000a*). Smaller-sized species are much rarer and often occur as dissociated ossicles of disc and arms only. An articulated specimen of an ophiacanthid partially wrapped around the stalk of a bourgueticrinine crinoid from the lower Gronsveld Member (*Jagt, 2000a*), in which obrution-related echinoderm Lagerstätten have been recorded between the St.

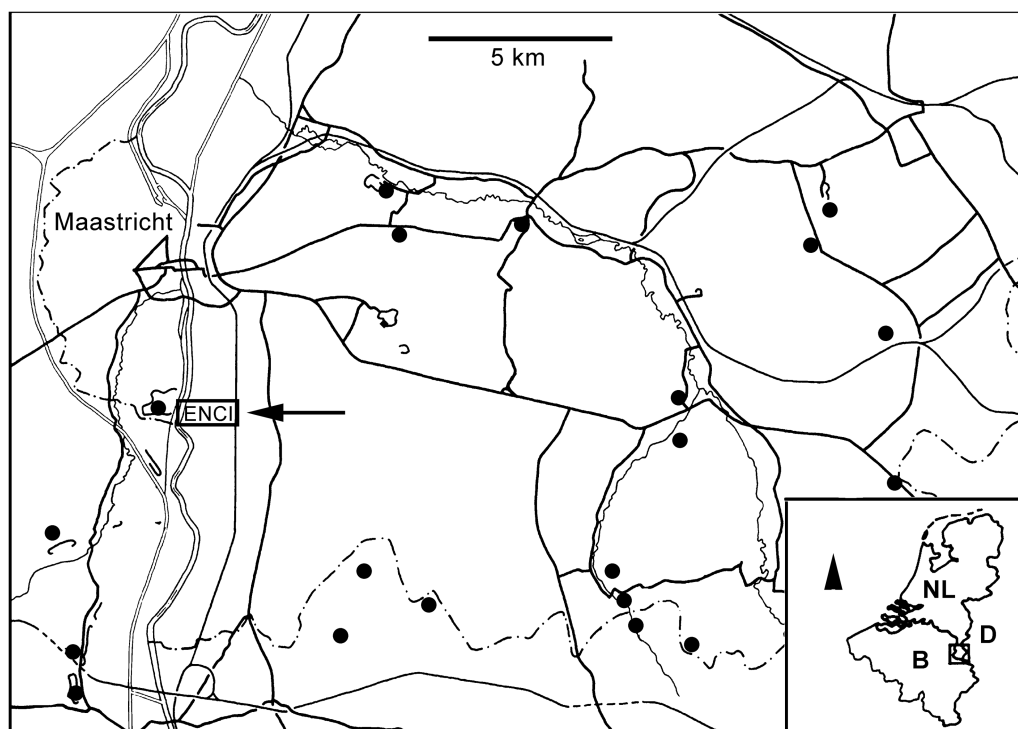


Figure 1 Locality map. Map of southern Limburg and contiguous areas in Belgium and Germany, representing the extended type area of the MaaSt.richtian St.age and showing the location of the former ENCI-HeidelbergCement Group quarry (modified from *Jagt et al., 2020*).

Full-size  DOI: [10.7717/peerj.9671/fig-1](https://doi.org/10.7717/peerj.9671/fig-1)

Pieter and ENCI horizons (Fig. 3) (see *Jagt et al., 1998; Jagt, 1999b*), provided the impetus for the present note. In fact, it represents one of the very few known examples of an articulated ophiacanthid fossil. Albeit illustrated and described in previous studies, it has not been adequately assigned. Thanks to recent advances in ophiuroid phylogeny and in the systematic assessment of dissociated skeletal plates (in particular lateral arm plates) and their microstructures, it was possible to carry out a more detailed morphological analysis and attempt a conclusive taxonomic interpretation of the material, thus filling a critical gap in the fossil record of ophiacanthid brittle stars around the time of their demise at shallow depths (*Thuy, 2013*).

Stratigraphical setting

The lower portion of the Maastricht Formation at the former ENCI-Heidelberg Cement Group quarry comprises comparatively fine-grained, poorly indurated, pale yellow biocalcarenes with a diverse macrofossil content, in particular in the Valkenburg and Gronsveld members (Fig. 3). On the basis of recent cyclostratigraphical and chronostratigraphical age models for the type Maastrichtian (*Keutgen, 2018*), the base of the Valkenburg Member (i.e., the contact between the Gulpen and Maastricht formations or Lichtenberg Horizon) can be dated at 66.8 Ma, and the base of the overlying Gronsveld Member (St Pieter Horizon) at 66.7 Ma. The latter horizon is thought to represent the early



Figure 2 ENCI-HeidelbergCement Group quarry. The northeast corner of the former ENCI-HeidelbergCement Group quarry (Maastricht), looking southwest. (Spring 2019); the level with tyre tracks corresponds roughly to the lower Gronsvelde Member (St. Pieter and ENCI horizons; see Fig. 3; photograph by Mart J.M. Deckers).

Full-size  DOI: [10.7717/peerj.9671/fig-2](https://doi.org/10.7717/peerj.9671/fig-2)

stages of a transgression from a relative lowstand during a tectonic inversion phase, while the overlying Gronsvelde Member represents a relative highstand during tectonic relaxation, with the maximum flooding surface situated around the middle of this unit (*Schiøler et al., 1997*).

In more general terms, referring to the area west of the River Maas (Meuse), the lowest unit of the Maastricht Formation, the Valkenburg Member, comprises poorly indurated, white-yellowish to yellowish-grey, fine- to coarse-grained biocalcarenes, with greyish brown flint nodules of varying sizes. The overlying Gronsvelde Member consists of poorly indurated, white-yellowish to yellowish-grey, fine- to coarse-grained biocalcarenes, with small, light to dark greyish-brown flint nodules of varying sizes and shapes occurring in the lower part. In the higher portion they are arranged in more or less regular beds of light-grey to greyish blue nodules (*Fig. 3*).

The lower portion of the Maastricht Formation has been considered to represent a gravelly intrabiomicosparite, with regional currents constant enough for horizontal displacement of sediment particles over the entire platform, at sublittoral depths, judging from benthic foraminifera, ostracods and numerous plant fossils, including terrestrial forms such as conifers, and sheltered from oceanic influence (*Villain, 1977; Jagt, 1999a; Jagt & Jagt-Yazykova, 2012*). Frequent sediment reworking resulted in homogenisation

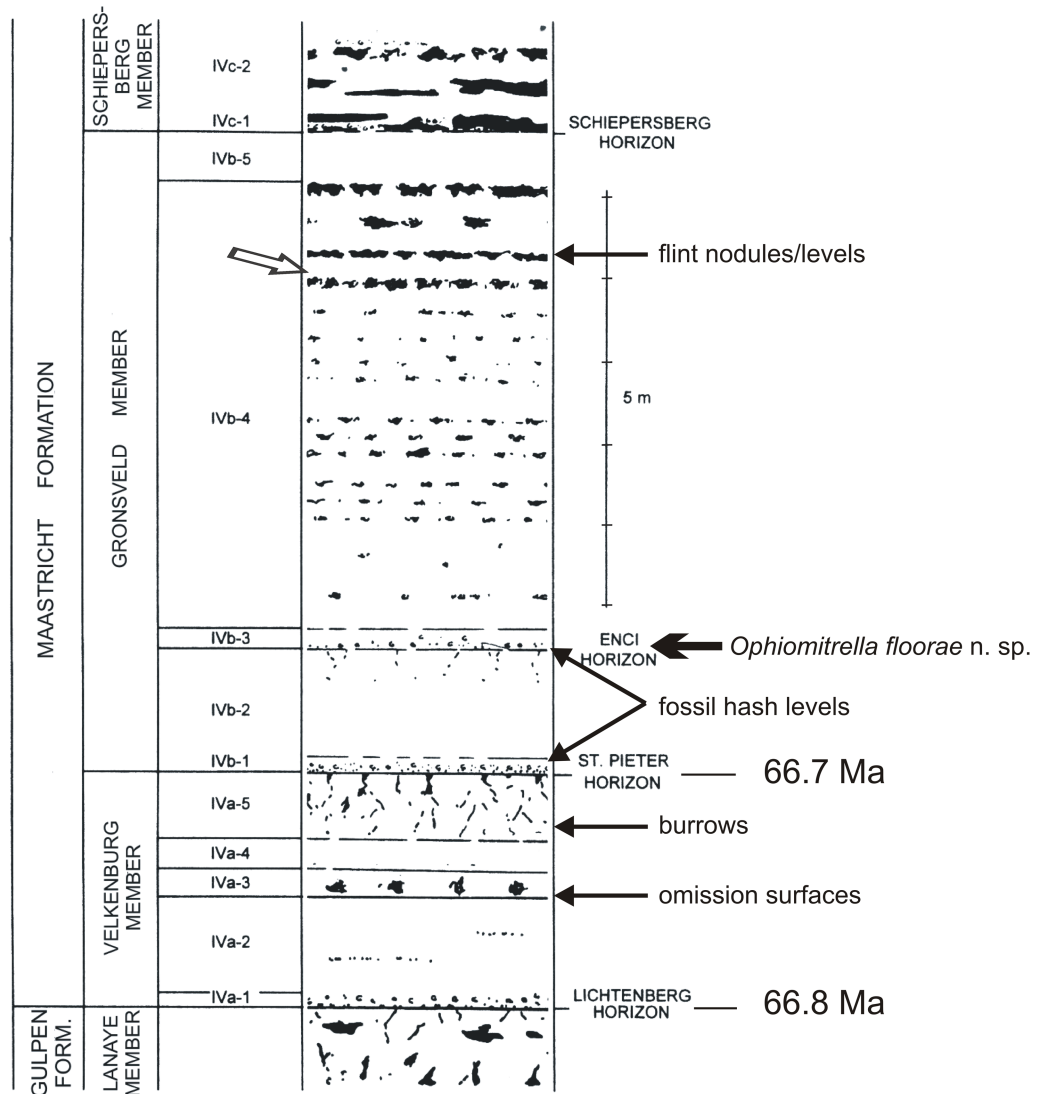


Figure 3 Litholog of the lower Maastricht Formation. Log (modified from *Felder & Bosch, 1998*), with the St. Pieter and ENCI horizons in the lower part of the Gronsveld Member. The arrow in the higher part of that unit refers to one of the more spectacular storm levels in the section (for details, see *Jagt et al., 2019*).

Full-size DOI: 10.7717/peerj.9671/fig-3

over depths of a few decimetres, leading to a relatively firm sea floor and clear waters. This setting has been interpreted as middle sublittoral, under subtropical conditions and with sea grass communities (*Liebau, 1978; Jagt et al., 2019*).

On evidence of index forms amongst coleoid cephalopods (*Christensen, Schmid & Schulz, 2005; Jagt & Jagt-Yazykova, 2019*) and inoceramid bivalves (*Jagt & Jagt-Yazykova, 2018*), the lower portion of the Maastricht Formation has been shown to be of late, though not latest, Maastrichtian age, thus corroborating age assignments on the basis of dinoflagellates and calcareous nannoplankton (see *Schiöler et al., 1997; Keutgen, 2018*). All these biota allow correlation of these shallow-water biocalcarenes along the fringes of Palaeozoic



Figure 4 Paleogeographical map. ReconSt.ruction of oceans, epicontinental seas and land masses during the late Late Cretaceous (c. 75 Ma; ©2012 Colorado Plateau GeosySt.ems Inc.).

Full-size  DOI: [10.7717/peerj.9671/fig-4](https://doi.org/10.7717/peerj.9671/fig-4)

massifs (Fig. 4) with coeval levels in deeper-water settings (white chalk, Schreibkreide) elsewhere in Europe (northern Germany, Denmark and Poland).

Previous work on ophiuroids

Earlier records of late Maastrichtian echinoderms in the type area of the Maastrichtian Stage have demonstrated several Lagerstätten, comprising mostly bourgueticrinine crinoids (and other comatulids associated; see Jagt *et al.*, 1998; Jagt, 1999b) as well as lesser numbers of echinoids (Jagt, 2000b), asteroids (Jagt, 2000c; Blake & Jagt, 2005; A.S. Gale & J.W.M. Jagt, work in progress) and ophiuroids.

Brittle stars from the lower Gronsveld Member (Jagt, 1999c; Jagt, 1999d; Jagt, 2000a) include mostly semi-articulated individuals of the sturdy-plated *Ophiomusium granulosum* (Roemer, 1840–1841) (= *Ophiura* (*Aspidura*) *subcylindrica* Von Hagenow, 1840), *Ophiotitanos serrata* (Roemer, 1840–1841) (= *Ophiura parvisentis* Spencer, 1905–1908; *Ophioglypha gracilis* Valette, 1915) and *Ophiopeza? hagenowi* (Wienberg Rasmussen, 1950) (see Wienberg Rasmussen, 1950; Jagt, 2000a; Ishida *et al.*, 2018). Other taxa, such as *Trichaster? ornatus* (Wienberg Rasmussen, 1950) and *Ophiothrix? bongaertsi* Kutscher &

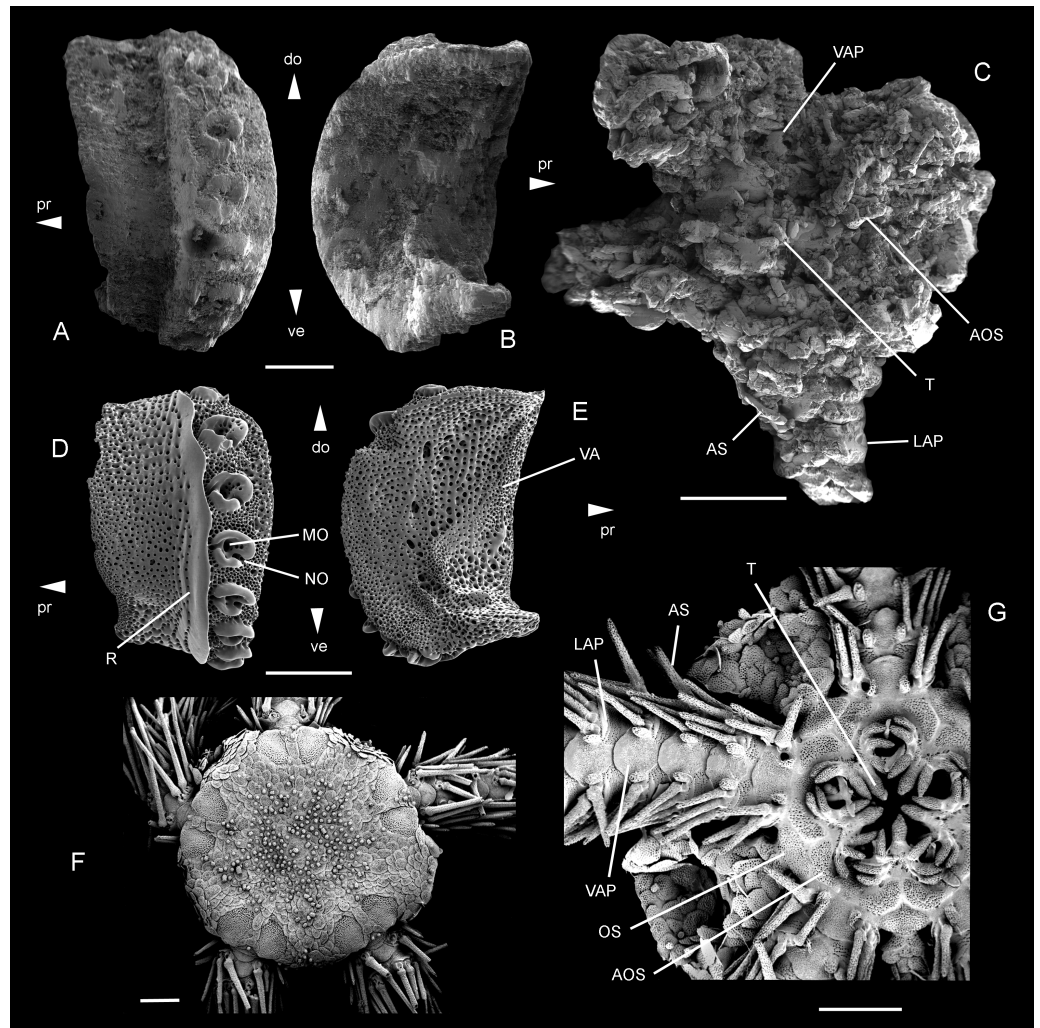


Figure 5 *Ophiomitrella floorae* n. sp., from the lower Gronsveld Member (MaaSt.richt Formation; St. Pieter and ENCI horizons) at the former ENCI-HeidelbergCement Group quarry, MaaSt.richt, the Netherlands. A–B: holotype (NHMM JJ 5104), dissociated proximal lateral arm plate in external (A) and internal (B) views; C: paratype (NHMM K 3387), articulated disc with basal arm segments in ventral view. *Ophiomitrella granulosa* Recent, as a close living relative of *O. floorae* n. sp. D–E: proximal lateral arm plate (SMNH-121224) in external (D) and internal (E) views; F–G: complete individual (MNHNEcOs22429) in dorsal view (F) and with detail of ventral disc skeleton (G). Abbreviations: AOS, adoral shield; AS, arm spine; do, dorsal; LAP, lateral arm plate; MO, muscle opening; NO, nerve opening; OS, oral shield; pr, proximal; R, ridge; T, tooth; VA, vertebral articulation; VAP, ventral arm plate. Scale bars equal 0,25 mm in A–B and D–E, and 1 mm in C and F–G. Scanning electron microscope images of Figs. F–G by Sabine St.öhr.

Full-size DOI: [10.7717/peerj.9671/fig-5](https://doi.org/10.7717/peerj.9671/fig-5)

Jagt, 2000, are much rarer and occur only as dissociated vertebrae and lateral arm plates, respectively (*Jagt, 2000a*).

MATERIALS & METHODS

Jagt (2000a), *Jagt (2000b)* and *Jagt (2000c)* records of the ophiacanthid *Ophiacantha? danica* Wienberg Rasmussen, 1952 from the lower Gronsvelt Member was based on a single, articulated individual in life position around a crinoid stalk (NHMM K 3387), as well as a single isolated lateral arm plate (NHMM JJ 5104) obtained from the sieving residues of a bulk sediment sample from the same deposits. It is this material which is revised herein. The material described herein was illustrated and/or mentioned in previous studies (*Jagt, 2000a*; *Thuy, 2013*). For the purpose of the present reassessment, dissociated lateral arm plates and the disc of the articulated specimen, detached from the matrix, were mounted on a stub and gold-coated for scanning electron microscopy (LEO 1530 Gemini). Morphological terminologies follow *Stöhr, O'Hara & Thuy (2012)* for general skeletal features, *Thuy & Stöhr (2011)* for lateral arm plates and *Hendler (2018)* for the mouth skeleton. We adopt the classification proposed by *O'Hara et al. (2017)* and *O'Hara et al. (2018)*. To denote the repositories of the material described and illustrated here, the following abbreviations are used: NHMM, Natuurhistorisch Museum Maastricht, Maastricht, the Netherlands; SMNH, Swedish Museum of Natural History, Stockholm, Sweden; MNHN, Muséum national d'Histoire naturelle, Paris, France.

The electronic version of this article in Portable Document Format (PDF) will represent a published work according to the International Commission on Zoological Nomenclature (ICZN), and hence the new names contained in the electronic version are effectively published under that Code from the electronic edition alone. This published work and the nomenclatural acts it contains have been registered in ZooBank, the online registration system for the ICZN. The ZooBank LSIDs (Life Science Identifiers) can be resolved and the associated information viewed through any standard web browser by appending the LSID to the prefix <http://zoobank.org/>. The LSID for this publication is: urn:lsid:zoobank.org:pub:9BE69BFD-69FE-4671-BC94-0DF402806A75. The online version of this work is archived and available from the following digital repositories: PeerJ, PubMed Central and CLOCKSS.

RESULTS

Systematic palaeontology

Class Ophiuroidea *Gray (1840)*

Subclass Myophiuroidea *Matsumoto (1915)*

Infraclass Metophiurida *Matsumoto (1913)* (crown-group of Ophiuroidea)

Superorder Ophintegrada *O'Hara et al. (2017)*

Order Ophiacanthida *O'Hara et al. (2017)*

Suborder Ophiacanthina *O'Hara et al. (2017)*

Family Ophiacanthidae *Ljungman (1867)*

Genus *Ophiomitrella* *Verrill (1899)*

Ophiomitrella floorae n. sp.

[Figs. 5A–5C](#)

Etymology: Named after Floor Jansen, lead singer of the Finnish band Nightwish in recognition of her long-standing career in metal, her general interest in all things (palaeo) biological and her and the band's use of fossils for artwork (*Metal Mike, 2020*).

Holotype: NHMM JJ 5104

Type locality and stratum: lower Gronsvelt Member (Maastricht Formation; St. Pieter and ENCI horizons) at the former ENCI-Heidelberg Cement Group quarry, Maastricht, the Netherlands.

Paratype: NHMM K 3387

Note that most of the specimens cited as *Ophiacantha? danica* in *Jagt (2000a)* have subsequently been re-assigned to *Ophiogaleus danicus* by *Thuy (2013)* and *Ophiotreta striata (Kutscher & Jagt, 2000)*. Of the remaining specimens, only the articulated disc of *Jagt (2000a)*, *Jagt (2000b)* and *Jagt (2000c)* plate 2, figure 7 (NHMM K 3387) and the lateral arm plate of *Thuy (2013)* figure 32-2 (NHMM JJ 5104) are unambiguously assignable to the species described herein. All other specimens either are too poorly preserved for a conclusive assessment or belong to a different species.

Diagnosis: Small species of *Ophiomitrella* with high lateral arm plates showing up to eight large spine articulations and a very weak and fine vertical striation; large, wide adoral shields; two to three large, conical oral papillae sensu lato and a single large, conical ventralmost tooth.

Description of holotype: NHMM JJ 5104 (*Figs. 5A–5B*) is a dissociated proximal lateral arm plate, almost two times taller than long; dorsal edge concave due to a strong constriction; distal edge strongly and regularly convex; proximal edge weakly concave and devoid of spurs; ventral portion of lateral arm plate not protruding. Outer surface with finely meshed stereom and a very weak, fine vertical striation close to ridge of spine articulations. Eight large, ear-shaped spine articulations on a strongly elevated distal portion of lateral arm plate; row of spine articulations proximally bordered by thick, conspicuous, straight ridge; spine articulations each consisting of large muscle opening enclosed by dorsal and ventral lobes forming round, continuous ring, and separated from smaller nerve opening by well-developed sigmoidal fold; weak dorsalward increase in size of spine articulations and distance between them. Ventral edge of lateral arm plate oblique; tentacle notch invisible in external view; row of spine articulations protruding ventralwards. Inner side of lateral arm plate with large, well-defined vertebral articulation shaped like slightly rotated digit one with an expanded nose; tentacle notch small but well defined, distally bordering thickened ventral edge of lateral arm plate; poorly defined vertical furrow running parallel to row of spine articulations but presence of perforations ambiguous due to insufficient preservation.

The paratype (NHMM K 3387, *Fig. 5C*) is an articulated skeleton with an arm wrapped around a bourgueticrinine stalk; the proximal arm portions show lateral arm plates similar to the holotype; the disc is poorly preserved due to coarse recrystallisation, blurring all details on the dorsal side; ventral side of the disc preserving a few details of the skeleton; four arm bases preserved intact, showing strongly recrystallised lateral and ventral arm plates and ventral arm spines; lateral arm plates identical to holotype; ventral arm plates with a strongly convex distal edge, deeply incised lateral edges and a pointed proximal tip;

arm spines at least as long as one arm segment; adoral shields large and wide; two to three large, conical oral papillae sensu lato and a large, conical ventralmost tooth.

DISCUSSION

The material described herein unambiguously belongs to the family Ophiacanthidae as defined by *O'Hara et al. (2018)* on account of the large, ear-shaped spine articulations proximally bordered by a sharply defined ridge, the non-protruding ventral portion of the lateral arm plates, and the shape of the ridge on the inner side of the lateral arm plates. Within this family, several clades have been resolved using molecular evidence (*O'Hara et al., 2017*), but only very few agree with previously defined genera (e.g., *Ophioplinthaca*). Most traditional ophiacanthid genera are poly- or paraphyletic, challenging the diagnostic value of the characters used to define these taxa (*O'Hara et al., 2017*). In contrast, patterns in lateral arm plate morphology seem to agree with molecular evidence in many aspects (*O'Hara et al., 2014; Thuy & Stöhr, 2016*), corroborating that lateral arm plates can be used to constrain the position of a species within the family Ophiacanthidae (*Thuy, 2013*).

In the light of this conclusion, and due to the poor preservation of the single articulated individual, we have chosen the dissociated proximal lateral arm plate as the holotype of the new species. Microstructural details of the lateral arm plate morphology put the specimens closest to the ophiacanthid genera *Ophiomitrella* and *Ophiacantha*. The mouth skeleton of the paratype specimen corroborates this position. The development of the vertical striation on the outer surface ornamentation of the lateral arm plates, the shape of the ridge proximally bordering the row of spine articulations, and the shape of the vertebral articulation on the inner side of the lateral arm plate excludes all other genera assigned to the family Ophiacanthidae as defined by *O'Hara et al. (2018)*. Both *Ophiomitrella* and *Ophiacantha*, as currently understood, are polyphyletic and require revision (*O'Hara et al., 2018*), hampering a clear-cut genus-level assignment. The type species of *Ophiacantha*, *O. bidentata* (*Bruzelius, 1805*), differs from the specimens described herein in having a more expanded vertical striation on the outer surface and a row of spine articulations that does not protrude ventralwards. We therefore preclude assignment to *Ophiacantha* and favour *Ophiomitrella* instead, although it must be stressed that the type species of the genus, *Ophiomitrella laevipellis* (*Lyman, 1883*), has not been genetically sequenced nor morphologically dissected as yet because it is known only from very valuable historical samples, rarely represented in museum collections.

Within the three clades resolved by molecular evidence and containing the recent species of *Ophiomitrella* (*O'Hara et al., 2017*), the specimens described herein show closest similarities to the species of the clade that contains *Ophiomitrella granulosa* (*Lyman, 1878*) (Figs. 5D–5G) and *O. mensa* (*O'Hara & Stöhr, 2006*). In members of the second clade, in particular *Ophiomitrella conferta* (*Koehler, 1922*) and *O. clavigera* (*Ljungman, 1865*), the vertebral articulation looks more like a digit 1 and lacks the expanded nose. Comparison with members of the third clade of *Ophiomitrella* species, e.g., *O. stellifera* (*Matsumoto, 1917*), was hampered by the lack of information on the microstructures of the lateral arm plate. Thus, as long as the systematic position of the type species is unresolved, assignment

to *Ophiomitrella* is tentative and should merely underline the close relationship with *O. granulosa*.

The material described herein differs from previously recorded fossils assigned to *Ophiomitrella* in the higher number of spine articulations and the finer, less pronounced vertical striation on the outer surface of the lateral arm plates (Thuy, 2013). Assignment to a Recent species is precluded by the stratigraphical age of the fossils, implying an implausibly long range; we therefore assign the material described herein to a new species. Notwithstanding the above-mentioned uncertainties in the definition of the genus, *O. floorae* n. sp. fills an important stratigraphic gap between the previously published records of *Ophiomitrella* from the Middle Jurassic (Thuy, 2013) and the morphologically similar living species of the genus. Recent members of *Ophiomitrella*, and of the family Ophiacanthidae in general, predominantly live at deep sublittoral to bathyal depths, i.e., between 150 and 2,000 m, (O'Hara & Stöhr, 2006; O'Hara et al., 2017). Thus, the discovery of *Ophiomitrella floorae* n. sp. aligns with the co-occurring ophiomusaid brittle stars and bourgueticrinine sea lilies in belonging to groups once common and widespread at shallow depths but nowadays restricted to deeper waters (e.g., Thuy et al., 2012). Their occurrence at middle sublittoral paleo-depths during the late Maastrichtian is a relict of their mid-Mesozoic occurrence in shallow waters (Thuy et al., 2012; Thuy & Meyer, 2013; Thuy, 2013).

Ophiomitrella floorae is one of the first fossil ophiuroids shown to be associated with stalked crinoids. The exceptional discovery of an articulated individual partially wrapped around the stalk of a bourgueticrinine (Jagt, 2000a) (Fig. 6) could imply that the ophiuroid lived on the crinoid, with the mouth facing the stalk. The small size and general morphology of *Ophiomitrella floorae* n. sp. conforms to an epizoic lifestyle as commonly observed in living congeners (e.g., O'Hara & Stöhr, 2006). However, since the specimen is only partially wrapped around the stalk, we cannot entirely rule out the possibility that the ophiuroid and the crinoid were washed together, with the crinoid accidentally “grabbing” the crinoid stalk before burial. The only unambiguous example of an ophiuroid-crinoid association in the fossil record is the Paleozoic stem ophiuroid *Onychaster* that lived epizoically on stalked crinoids (Hotchkiss & Glass, 2012), often found tightly wrapped around the stem or cup of the associated crinoids. Living ophiuroids epizoic on rod-shaped hosts like corals generally extend several arms into the water column for feeding and are only tightly coiled around their host when resting (e.g., Steward & Mladenov, 1994). Also, ophiuroids dislodged from their substrate, e.g., by strong currents, tend to coil their arms around the disc (Emson & Wilkie, 1982) for more rapid sinking. Thus, it seems likely that *O. floorae* n. sp. lived epizoic on bourgueticrinine sea lilies, although we cannot rule out an accidental intertwining of the arms as a result of obrution and/or an attempt of the ophiuroid to free itself after having been smothered.

CONCLUSIONS

The case of *Ophiomitrella floorae* n. sp. demonstrates that a significant portion of ophiuroid palaeo-biodiversity is easily overlooked. Due to the small size and delicate skeleton of the species, it was much less likely to be noticed than the larger, sturdy-plated and therefore

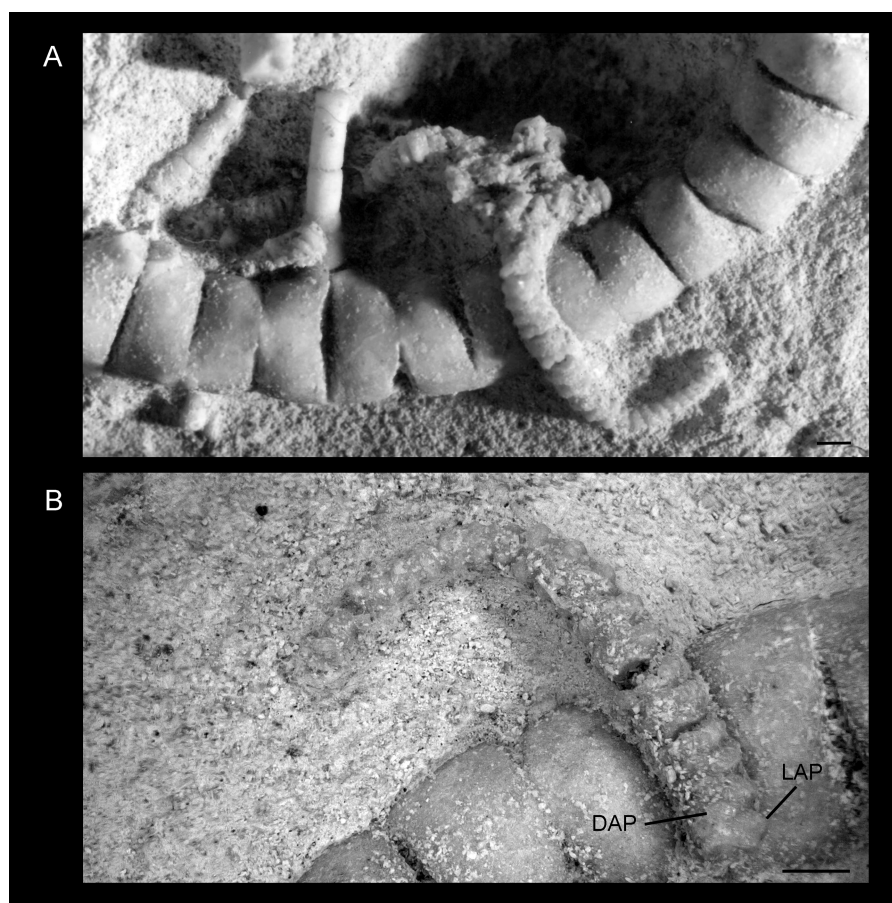


Figure 6 *Ophiomitrella floorae* n. sp., from the lower Gronsvelde Member (Maastricht Formation; St. Pieter and ENCI horizons) at the former ENCI-Heidelberg Cement Group quarry, Maastricht, the Netherlands. Paratype (NHMM K 3387). (A) articulated skeleton before removal of the disc and proximal arm segments for scanning electron microscopy; (B) detail of an arm in dorsal view. Abbreviations: DAP, dorsal arm plate; LAP, lateral arm plate. Scale bars equal 1 mm.

Full-size  DOI: 10.7717/peerj.9671/fig-6

more conspicuous co-occurring ophiomusaid and ophiodermatid brittle stars. The single articulated individual was previously too poorly preserved to allow for unambiguous species-level identification (Jagt, 2000a). It was only thanks to co-occurring dissociated lateral arm plates that the species could be described, thus underscoring the importance of microfossils in assessing the paleo-biodiversity of taxa with multi-element skeletons such as brittle stars.

ACKNOWLEDGEMENTS

One of us (JWMJ) thanks the management of the former ENCI-Heidelberg Cement Group quarry (Maastricht) for permission to do fieldwork at their grounds over recent decades, and fellow palaeontologists Mart Deckers, Rudi Dortangs and Marcel Kuypers for support during fieldwork and for donation of echinoderm material. We thank Mart Deckers for providing the photograph used in Fig. 2, and Sabine Stöhr for providing the

scanning electron images used in Figs. 5F–5G. We furthermore thank the reviewers whose comments improved an earlier version of this manuscript.

ADDITIONAL INFORMATION AND DECLARATIONS

Funding

The authors received no funding for this work.

Competing Interests

The authors declare there are no competing interests.

Author Contributions

- Ben Thuy, Lea Numberger-Thuy and John W.M. Jagt conceived and designed the experiments, performed the experiments, analyzed the data, prepared figures and/or tables, authored or reviewed drafts of the paper, and approved the final draft.

Data Availability

The following information was supplied regarding data availability:

Data is available at Figshare: Thuy, Ben; D. Numberger-Thuy, Lea; Jagt, John W.M. (2020): Raw scans for "A new ophiacanthid brittle star (Echinodermata, Ophiuroidea) from sublittoral crinoid and seagrass communities of late Maastrichtian age in the southeast Netherlands". figshare. Figure. <https://doi.org/10.6084/m9.figshare.12057933.v1>.

Specimens described and illustrated in this article are stored in publicly accessible museum collections: NHMM, Natuurhistorisch Museum Maastricht, Maastricht, the Netherlands (specimens NHMM JJ 5104 and K 3387); SMNH, Swedish Museum of Natural History, Stockholm, Sweden (specimen SMNH-121224); MNHN, Muséum national d'Histoire naturelle, Paris, France (MNHNEcOs22429).

New Species Registration

The following information was supplied regarding the registration of a newly described species:

Publication LSID: urn:lsid:zoobank.org:pub:9BE69BFD-69FE-4671-BC94-0DF402806A75

Ophiomitrella floorae LSID: urn:lsid:zoobank.org:act:083AAA5B-5C6B-4D4C-99E4-06E89A9F56F7

REFERENCES

- Blake DB, Jagt JWM. 2005.** New latest Cretaceous and earliest Paleogene asteroids (Echinodermata) from The Netherlands and Denmark and their palaeobiological significance. *Bulletin de l'Institut royal des Sciences naturelles de Belgique, Sciences de la Terre* 75:183–200.
- Bruzelius N. 1805.** Dissertatio sistens species cognitatas asteriarum, quamr. sub praesidio A.J. Retzii. exhibet N. Bruzelius, Lundae (formerly known as Retzius, A.J.). 1–37.

- Christensen WK, Schmid F, Schulz M-G. 2005.** Belemnitella from the Upper Maastri-
chian of Hemmoor, northwest Germany. *Geologisches Jahrbuch* **A157**:23–67 (for
2004).
- Emson RH, Wilkie IC. 1982.** The arm-coiling response of *Amphipholis squamata*
(Delle Chiaje). In: Lawrence JM, ed. *Echinoderms: proceedings of the International
Conference, Tampa Bay, 1981*. 1. Rotterdam: Balkema, 1–18.
- Felder WM. 1975a.** Lithostratigraphische Gliederung der Oberen Kreide in Süd-Limburg
(Niederlande) und den Nachbargebieten. 1. Teil: Der Raum westlich der Maas,
Typusgebiet des 'Maastricht'. *Publicaties van het Natuurhistorisch Genootschap in
Limburg* **24**:1–43.
- Felder WM. 1975b.** Lithostratigrafie van het Boven-Krijt en het Dano-Montien in
Zuid-Limburg en het aangrenzende gebied. In: Zagwijn WH, Van Staalduinen CJ,
eds. *Toelichting bij geologische overzichtskaarten van Nederland*. Haarlem: Rijks
Geologische Dienst, 63–72.
- Felder WM, Bosch PW. 1998.** *Geologie van de St. Pietersberg bij Maastricht*. 52(3).
Nijverdal: Grondboor & Hamer, 53–63 [Limburgnummer 9A: Geologie van de St.
Pietersberg].
- Gray JE. 1840.** *Room II: synopsis of the contents of the British Museum*. London: British
Museum, 57–65.
- Hendler G. 2018.** Armed to the teeth: a new paradigm for the buccal skeleton of brittle
stars (Echinodermata: Ophiuroidea). *Contributions in Science* **526**:189–311.
- Hotchkiss FHC, Glass A. 2012.** Observations on *Onychaster* Meek & Worthen, 1868
(Ophiuroidea: Onychasteridae) (Famennian –Visean age). In: Kroh A, Reich M,
eds. *Echinoderm Research 2010: Proceedings of the Seventh European Conference on
Echinoderms, Göttingen, Germany, 2–9 2010*. *Zoosymposia*. 7. 121–138.
- Ishida Y, Thuy B, Fujita T, Kadokawa M, Ikegami N, Numberger-Thuy LD. 2018.**
A new species of *Stegophiura* (Ophiuroidea, Ophiopyrgidae) from the mid-
Cretaceous of southern Japan. *Swiss Journal of Palaeontology* **137**:319–325
[DOI 10.1007/s13358-018-0168-7](https://doi.org/10.1007/s13358-018-0168-7).
- Jagt JWM. 1999a.** Late cretaceous-early palaeogene echinoderms and the k/t boundary
in the southeast netherlands and northeast belgium—part 1: introduction and
stratigraphy. *Scripta Geologica* **116**:1–57.
- Jagt JWM. 1999b.** Late cretaceous-early palaeogene echinoderms and the k/t boundary in
the southeast netherlands and northeast belgium—part 2: crinoids. *Scripta Geologica*
116:59–255.
- Jagt JWM. 1999c.** An overview of Late Cretaceous and Early Palaeogene echinoderm
faunas from Liège-Limburg (Belgium, The Netherlands). In: Dhondt AV, Alekseev
AS, eds. *Bulletin de l'Institut royal des Sciences naturelles de Belgique, Sciences de la
Terre*. 69(A). Brussels: Bulletin de l'Institut royal des Sciences naturelles de Belgique,
Sciences de la Terre, 103–118, D.P. Naidin Festschrift (INTAS 94-1414).
- Jagt JWM. 1999d.** Ophiuroid diversity in the type area of the Maastri-
chian Stage. In: Vergoossen JMJ, Lambers PH, eds. *Actual paleontology—paleontology in action: a
tribute to Bert Boekschoten*. 78. Geologie en Mijnbouw 197–206.

- Jagt JWM. 2000a.** Late Cretaceous-Early Palaeogene echinoderms and the K/T boundary in the southeast Netherlands and northeast Belgium—part 3: Ophiuroids. In: *Scripta Geologica. With a chapter on: Early Maastrichtian ophiuroids from Rügen (northeast Germany) and Møn (Denmark) by Manfred Kutscher & John W.M. Jagt*, 121. Leiden: Scripta Geologica, 1–179.
- Jagt JWM. 2000b.** Late Cretaceous-Early Palaeogene echinoderms and the K/T boundary in the southeast Netherlands and northeast Belgium—part 4: Echinoids. *Scripta Geologica* 121:181–375.
- Jagt JWM. 2000c.** Late cretaceous-early palaeogene echinoderms and the K/T boundary in the southeast netherlands and northeast belgium—part 5: asteroids. *Scripta Geologica* 121:377–503.
- Jagt JWM, Deckers MJM, De Leebeek M, Donovan SK, Nieuwenhuis E. 2020.** Episkeletozoans and bioerosional ichnotaxa on isolated bones of Late Cretaceous mosasaurs and cheloniid turtles from the Maastricht area, the Netherlands. *Geologos* 26:39–49 DOI 10.2478/logos-2020-0003.
- Jagt JWM, Deckers M, Donovan SK, Fraaije R, Goolaerts S, Van der Ham R, Hart MB, Jagt-Yazykova EA, Van Konijnenburg-van Cittert J, Renkens S. 2019.** Latest Cretaceous storm-generated sea grass accumulations in the Maastrichtian type area, the Netherlands –preliminary observations. *Proceedings of the Geologists' Association* 130:590–598 DOI 10.1016/j.pgeola.2019.05.003.
- Jagt JWM, Donovan SK, Deckers MJM, Dortangs RW, Kuypers MMM, Veltkamp CJ. 1998.** The Late Maastrichtian bourgueticrinid crinoid *Dunnicrinus aequalis* (d'Orbigny, 1841) from The Netherlands and Belgium. *Bulletin de l'Institut royal des Sciences naturelles de Belgique, Sciences de la Terre* 68:129–154.
- Jagt JWM, Jagt-Yazykova EA. 2012.** Stratigraphy of the type Maastrichtian—a synthesis. In: Jagt JWM, Donovan SK, Jagt-Yazykova EA, eds. *Fossils of the type Maastrichtian (Part 1)*. *Scripta Geologica Special Issue*, 8. Leiden: Scripta Geologica Special Issue, 5–32.
- Jagt JWM, Jagt-Yazykova EA. 2018.** Stratigraphical ranges of tegulated inoceramid bivalves in the type area of the Maastrichtian Stage (Belgium, the Netherlands). In: Jagt-Yazykova EA, Jagt JWM, Mortimore RN, eds. *Advances in cretaceous palaeontology and stratigraphy—Christopher John Wood Memorial Volume. Cretaceous research*. 87. 385–394.
- Jagt JWM, Jagt-Yazykova EA. 2019.** Late cretaceous and cenozoic cephalopods from the southern north sea basin: stocktaking and future directions. *Vita Malacologica* 18:1–33.
- Keutgen N. 2018.** A bioclast-based astronomical timescale for the Maastrichtian in the type area (southeast Netherlands, northeast Belgium) and stratigraphic implications: the legacy of P.J. Felder. *Netherlands Journal of Geosciences* 97:229–260 DOI 10.1017/njg.2018.15.
- Koehler R. 1922.** Echinodermata: Ophiuroidea. Australasian Antarctic Expedition 1911-1914. *Scientific Report Series C* 8(2):5–98, pls 76-90.
- Kutscher M, Jagt JWM. 2000.** Late Cretaceous-Early Palaeogene echinoderms and the K/T boundary in the southeast Netherlands and the northeast Belgium—Part 3:

- Ophiuroids, *Scripta Geologica*. In: Jagt JWM, ed. *Early Maastrichtian ophiuroids from Rügen (northeast Germany) and Møn (Denmark)*. 121. Leiden: Scripta Geologica, 45–107.
- Liebau A. 1978.** Paläobathymetrische und paläoklimatische Veränderungen im Mikrofaunenbild der Maastrichter Tuffkreide. *Neues Jahrbuch für Geologie und Paläontologie Abhandlungen* **157**:233–237.
- Ljungman AV. 1865.** Tillägg till kännedom af Skandinaviens Ophiurider. *Öfversigt af Kongelige Vetenskaps-Akademiens Förhandlingar 1863* **21**:359–367, pl. 15.
- Ljungman AV. 1867.** Ophiuroidea vivencia huc usque cognita enumerat. *Öfversigt af Kongelige Vetenskaps-Akademiens Förhandlingar 1866* **23**:303–336.
- Lyman T. 1878.** Ophiuridae and Astrophytidae of the Challenger expedition. Part I. *Bulletin of the Museum of Comparative Zoology at Harvard College, Cambridge, Mass* **5**:65–168, 10 pls.
- Lyman T. 1883.** Reports on the results of dredging, under the supervision of Alexander Agassiz, in the Caribbean Sea (1878-79), and on the east coast of the United States, during the summer of 1880, by the U.S. coast survey steamer Blake, commander J.R. Bartlett, U.S.N. commanding. XX.- Report on the Ophiuroidea. *Bulletin of the Museum of Comparative Zoology at Harvard* **10**:227–287.
- Matsumoto H. 1913.** Evolutionary history of the class Ophiuroidea and a note on the new classification of the class. *Zoological Magazine* **25**:521–527.
- Matsumoto H. 1915.** A new classification of the Ophiuroidea: with descriptions of new genera and species. *Proceedings of the Academy of Natural Sciences of Philadelphia* **67**:43–92.
- Matsumoto H. 1917.** A monograph of Japanese Ophiuroidea, arranged according to a new classification. *Journal of the College of Science, Imperial University, Tokyo* **38**:1–408.
- Metal Mike . 2020.** Floor Jansen. Via bergen en dalen naar de top. *Aardschok (Internationaal Metal Magazine)* **41**:12–21 Available at <http://www.aardschok.com>.
- O’Hara TD, Hugall AF, Thuy B, Moussalli A. 2014.** Phylogenomic resolution of the class Ophiuroidea unlocks a global microfossil record. *Current Biology* **24**:1874–1879 DOI [10.1016/j.cub.2014.06.060](https://doi.org/10.1016/j.cub.2014.06.060).
- O’Hara TD, Hugall AF, Thuy B, Stöhr S, Martynov AV. 2017.** Restructuring higher taxonomy using broad-scale phylogenomics: the living Ophiuroidea. *Molecular Biology and Evolution* **107**:415–430 DOI [10.1016/j.ympev.2016.12.006](https://doi.org/10.1016/j.ympev.2016.12.006).
- O’Hara TD, Stöhr S. 2006.** Deep water Ophiuroidea (Echinodermata) of New Caledonia: Ophiacanthidae and Hemieuryalidae. In: Richer de Forges B, Justine J-L, eds. *Tropical deep-sea Benthos*. volume 24. Paris: Mémoires du Muséum national d’Histoire naturelle, 33–141.
- O’Hara TD, Stöhr S, Hugall AF, Thuy B, Martynov A. 2018.** Morphological diagnoses of higher taxa in ophiuroidea (Echinodermata) in support of a new classification. *European Journal of Taxonomy* **416**:1–35.
- Roemer FA. 1840–1841.** *Die Versteinerungen des norddeutschen Kreidegebirges, iv + 1–48*. Hannover: Hahn’sche Hofbuchhandlung, 49–145.

- Schiøler P, Brinkhuis H, Roncaglia L, Wilson GJ. 1997.** Dinoflagellate biostratigraphy and sequence stratigraphy of the type Maastrichtian (Upper Cretaceous), ENCI Quarry, The Netherlands. *Marine Micropaleontology* **31**:65–95 DOI [10.1016/S0377-8398\(96\)00058-8](https://doi.org/10.1016/S0377-8398(96)00058-8).
- Spencer WK. 1905–1908.** *A monograph on the British fossil Echinodermata from the Cretaceous formations, 2. The Asteroidea and Ophiuroidea*. London: Monograph of the Palaeontographical Society London 67–90(1905), 91–132 (1907), 133–138 (1908).
- Steward B, Mladenov PV. 1994.** Aspects of reproduction and anatomy of the euryalimid snake star *Astrobrachion constrictum*. In: David B, Guille A, Féral JP, Roux M, eds. *Echinoderms through Time, Proceedings of the 8th International Echinoderm Conference, Dijon, France*. Rotterdam: Balkema, 491–497.
- Stöhr S, O’Hara TD, Thuy B. 2012.** Global diversity of brittle stars (Echinodermata: Ophiuroidea). *PLOS ONE* **7**(3):e31940 DOI [10.1371/journal.pone.0031940](https://doi.org/10.1371/journal.pone.0031940).
- Thuy B. 2013.** Temporary expansion to shelf depths rather than an onshore-offshore trend: the shallow-water rise and demise of the modern deep-sea brittle star family Ophiacanthidae (Echinodermata: Ophiuroidea). *European Journal of Taxonomy* **48**:1–242.
- Thuy B, Gale AS, Kroh A, Kucera M, Numberger-Thuy LD, Reich M, Stöhr S. 2012.** Ancient origin of the modern deep-sea Fauna. *PLOS ONE* **7**(10):e46913 DOI [10.1371/journal.pone.0046913](https://doi.org/10.1371/journal.pone.0046913).
- Thuy B, Meyer CA. 2013.** The pitfalls of extrapolating modern depth ranges to fossil assemblages: new insights from Middle Jurassic brittle stars (Echinodermata: Ophiuroidea) from Switzerland. *Swiss Journal of Palaeontology* **132**:5–21 DOI [10.1007/s13358-012-0048-5](https://doi.org/10.1007/s13358-012-0048-5).
- Thuy B, Stöhr S. 2011.** Lateral arm plate morphology in brittle stars (Echinodermata: Ophiuroidea): new perspectives for ophiuroid micropalaeontology and classification. *Zootaxa* **3013**(1):1–47 DOI [10.11646/zootaxa.3013.1.1](https://doi.org/10.11646/zootaxa.3013.1.1).
- Thuy B, Stöhr S. 2016.** A new morphological phylogeny of the Ophiuroidea (Echinodermata) accords with molecular evidence and renders microfossils accessible for cladistics. *PLOS ONE* **11**(5):e0156140 DOI [10.1371/journal.pone.0156140](https://doi.org/10.1371/journal.pone.0156140).
- Valette A. 1915.** Les ophiures de la craie des environs de Sens. *Bulletin de la Société des Sciences historiques et naturelles de l’Yonne* **68**:125–150.
- Verrill AE. 1899.** Report on the Ophiuroidea collected by the Bahama expedition in 1893. *Bulletin from the Laboratories of Natural History of the State University of Iowa* **5**:1–86.
- Villain J-M. 1977.** Le Maastrichtien dans sa région type (Limbourg, Pays-Bas). Étude stratigraphique et micropaléontologique. *Palaeontographica* **A157**:1–87.
- Von Hagenow F. 1840.** Monographie der Rügen’schen Kreideversteinerungen. Abtheilung 2. Radiarien und Annulaten nebst Nachträge zur 1. Abtheilung. Neues Jahrbuch für Mineralogie, Geognosie. *Geologie und Petrefaktenkunde* **1840**:631–672.
- Wienberg Rasmussen H. 1950.** Cretaceous Asteroidea and Ophiuroidea with special reference to the species found in Denmark. *Danmarks geologiske Undersøgelse* **77**:1–134.

Wienberg Rasmussen H. 1952. Cretaceous Ophiuroidea from Germany, Sweden, Spain and New Jersey. *Meddelelser fra Dansk Geologisk Forening* **12** (for 1951):47–57.