

H = Distance from top of head to bottom of chin (measured straight as if in a picture)  
 W = Width of head as measured through eyebrows (measured straight as if in a picture)  
 R = Circumference of the head at eye level (curving)

B = Distance from top of head to top of bottom of brow ridge (measured straight as if in a picture)  
 C = Distance from bottom of chin to mouth (measured straight as if in a picture)  
 E = Distance between inner edges of the eyes (measured straight as if in a picture)  
 J = Distance from point of tragus to bottom center of chin (measured curving slightly)  
 L = Length of Mouth from side to side (measured straight as if in a picture)  
 M = Width of head as measured through the mouth (measured straight as if in a picture)  
 S = Distance from center of eyes to the bottom rear of skull measured over head (curving)  
 T = Distance from point of left tragus to point of right tragus going over the head (curving)

The 9 ratios we will calculate are:

B/H = Top of Head %

C/H = Bottom of Face %

J/H = Jaw Line %

W/H = Width to Height

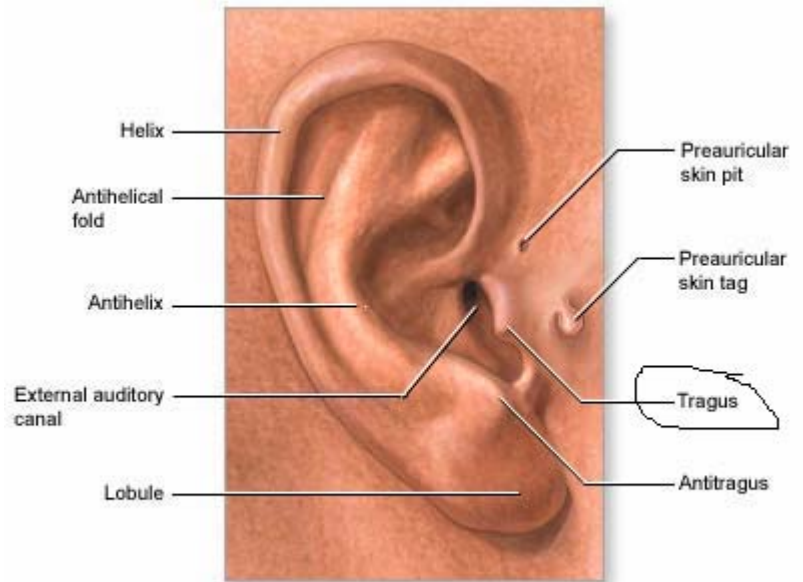
W/M = Top versus Bottom

L/M = Mouth %

E/B = Eye Width to Top

S/R = Back to Front versus Around

T/R = Side to Side versus Around



Measurement of head circumference

