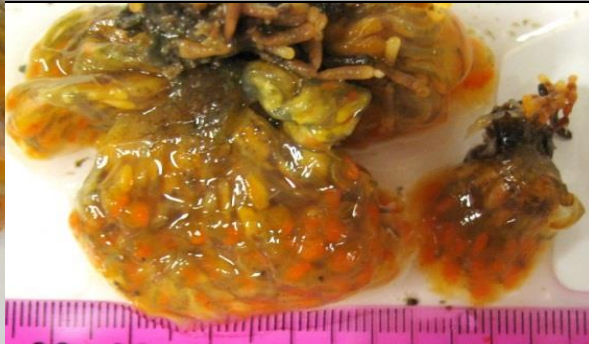


Tunicate (colonial) - *Ritterella pulchra*

DESCRIPTION	Clean transparent tunic with large bright yellow-orange zooids visible in lobes. Lobes are flatter at top, narrow in the middle and expand again at base and are 2-4 cm long. At the base of each zooid the moderately long post abdomen is an opaque light yellow-white oval. Sometimes many of these lobes grow together in a group and sometime just one short lobe.
RANGE	Alaska to southern California
SIZE	Colony up to 10 cm across. Individual lobes about 3 times longer than wide.
STATUS	Indigenous (or Native)
COLOR	Reddish-orange zooids with base yellow. Tunic is quite transparent.
HABITAT	Rocky cliffs or overhangs where shaded. May be washed up on beach after storm.
TIDAL HEIGHT	Extreme low intertidal down to shallow subtidal.
SALINITY	15.2 to 33.3 ppt. (Homer & Seldovia harbor range)
TEMPERATURE	neg 2.3 to 14.9° C (Homer & Seldovia harbor range)
SIMILAR SPECIES	<i>Ritterella rubra</i> forms deep or bright ruby red colonies of stalked, rounded lobes. <i>Synoicum parvustis</i> forms stalked, sand covered colonies with orange tunics and zooids and is more likely to be found in locations with moderate to strong wave action.



©KBRR-C.Bursch



©KBRR-C.Bursch



©E.McKetrick-Ground Truth Trekking



©E.McKetrick-Ground Truth Trekking