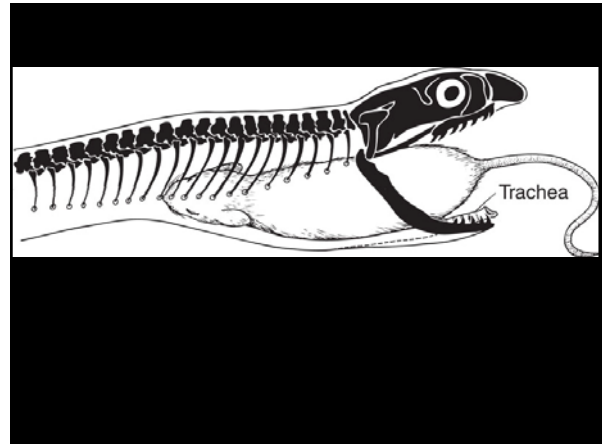
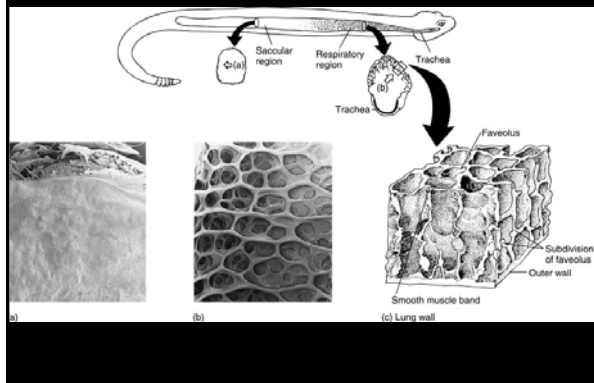
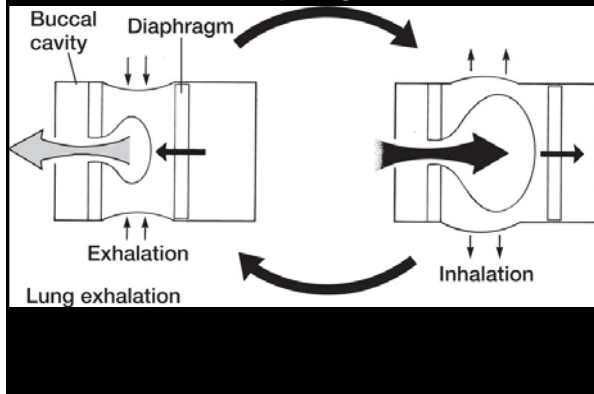


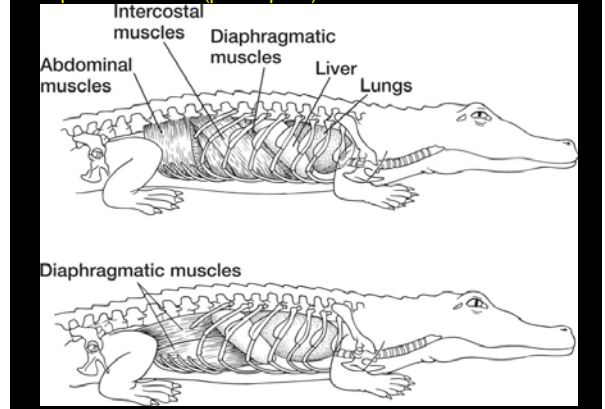
Reptile – snake



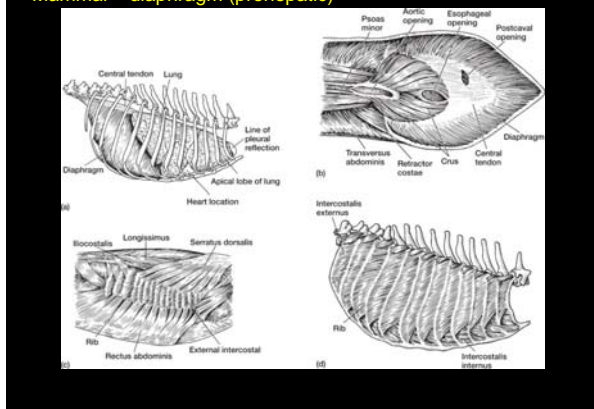
Diaphragm



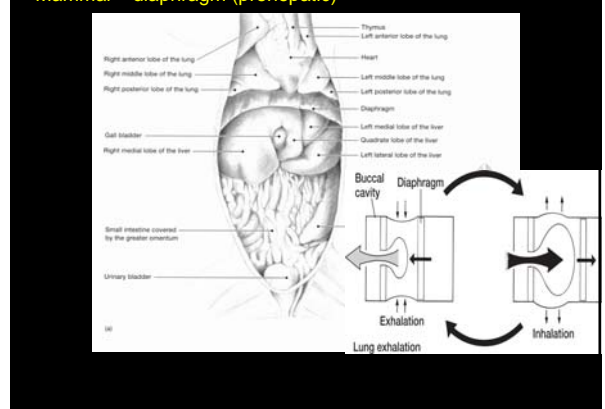
Reptile – crocodile (posthepatic)

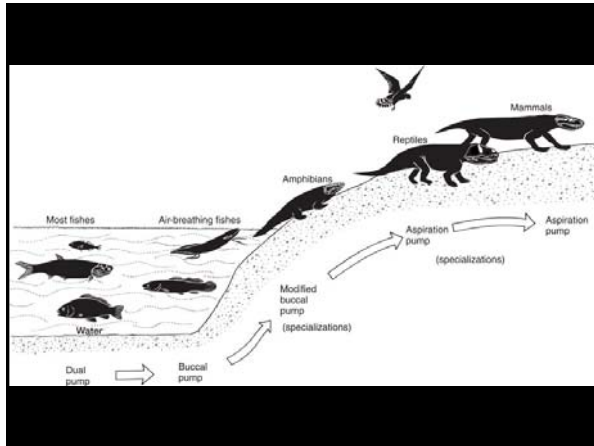


Mammal – diaphragm (prehepatic)



Mammal – diaphragm (prehepatic)





## Overview

- Air breathing  
dual pump → buccal pump  
(fish) (amphibians)
- Tradeoffs  
breathing vs. feeding  
cutaneous  
Aspiration pump

