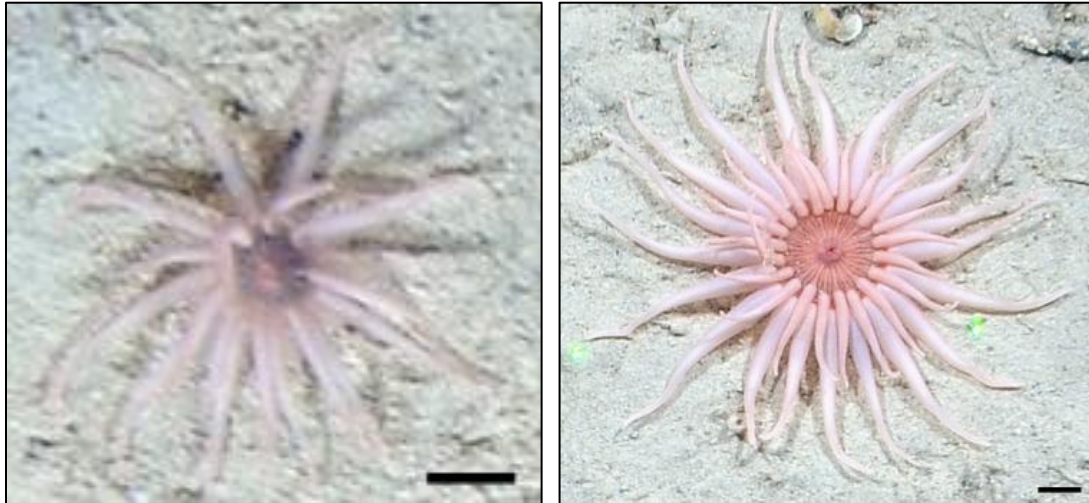


Actiniaria sp. 9



Description:

Large, pink anemone with two rows of tentacles. Inner row about half the length of the outer row. Colour of oral disc ranges from purple in juveniles (left image) to dark pink or red in adults (right image). Distinct lines radiate from a large, protruding mouth. Could be a tube-dwelling anemone.

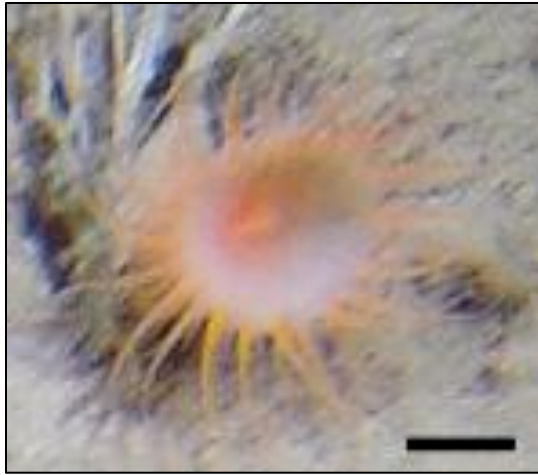
Actiniaria sp. 11



Description:

Large, erect anemone with orange oral disc and tentacles. Distinct lines radiate from the mouth to the outer edge of oral disc. Tentacles appear to be arranged in more than 2 rows. High above sediment; long column.

Actiniaria sp. 12



Description:

Medium-sized anemone with long, thin tentacles. Oral disc darker near mouth; similar in colour to tentacles. Column not visible; tentacle arrangement unknown.

Actiniaria sp. 21



Description:

Large anemone with several rows of large, thick tentacles. Tentacles appear to have a gradient in colour, with outer rows being white, and inner rows being more pink. Mouth and column not visible.

Actiniaria sp. 27*Description:*

Medium-sized anemone with long, thin tentacles. Dark ring around protruding mouth. Colour is pink. Tentacle arrangement unknown. On rock.

Actiniaria sp. 42*Description:*

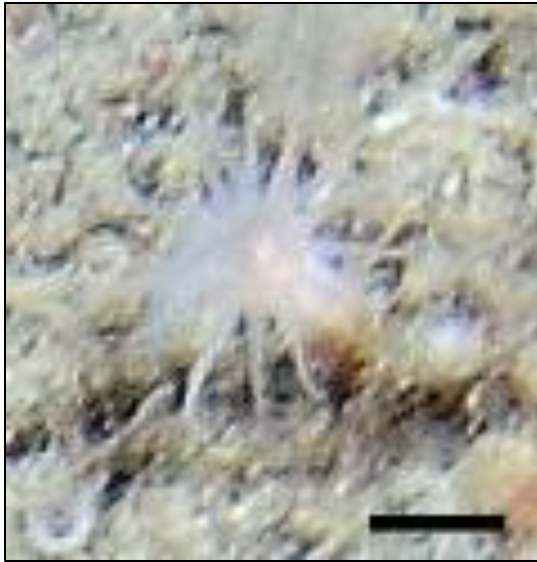
Large anemone with several rows of long, thick tentacles. Oral disc and tentacles pink; darker in juveniles (left image). Tips of tentacles always white. Column appears short.

Actiniaria sp. 43*Description:*

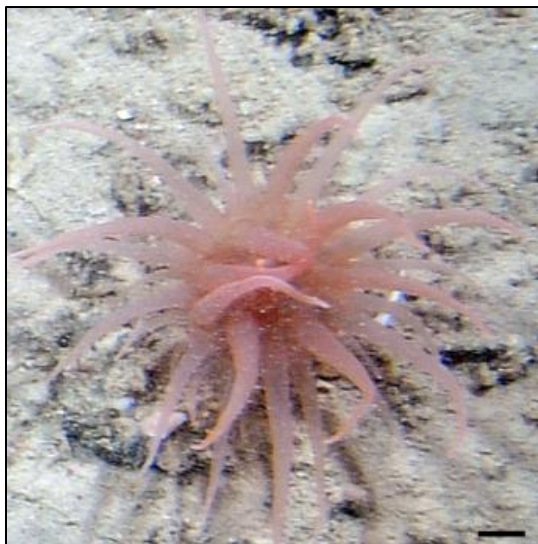
Medium-sized anemone with large tentacles relative to the central disc. Appears to be extending from a tube-like structure. Resembles members of the family Edwardsiidae.

Actiniaria sp. 45*Description:*

Medium-sized anemone with multiple rows of relatively short, thick tentacles. Tentacles are banded. Oral disc also banded, with yellow mouth, followed by a darker then lighter ring around the periphery. Disc close to the seabed suggests this species could be a cerianthid.

Actiniaria sp. 46*Description:*

Small anemone with long, slender column. Tentacles are relatively long and slender. White to light-pink in colour.

Actiniaria sp. 47*Description:*

Large anemone with several rows of long, thick tentacles. Tentacles and oral disc rose-coloured. Large mouth protrudes at the centre.

Actiniaria sp. 48*Description:*

Medium-sized anemone with several rows of long, thick tentacles. Oral disc colour strikingly different than tentacles, and possible spotted. Possibly a juvenile of Actiniaria sp. 47.

Actiniaria sp. 49*Description:*

Medium-sized anemone with short tentacles relative to oral disc diameter. Tentacles appear banded. Oral disc pinkish; darker near centre. Oral disc appears to sit on sediment.

Actiniaria sp. 51



Description:

Large, erect anemone with pink oral disc and tentacles. Distinct lines radiate from the mouth to the outer edge of oral disc. Tentacles appear to be arranged in more than 2 rows. High above sediment; long column. Similar to Actiniaria sp. 11.

Actiniaria sp. 52



Description:

Medium-sized anemone with possibly two rows of long tentacles. Column smooth, and as wide as the oral disc. Light pink in colour. Attached to rock.

Actiniaria sp. 53*Description:*

Large, erect anemone with pink oral disc and tentacles. Mouth area is darker in colour than rest of oral disc. Distinct lines radiate from the mouth to the outer edge of oral disc. Tentacle arrangement unclear. Similar to Actiniaria sp. 11 and Actiniaria sp. 51.

Actiniaria sp. 54*Description:*

Medium-sized oral disc with more than one row of tentacles. Appears to be attached by a long, thin column.

Actiniaria sp. 57*Description:*

Medium-sized anemone with multiple rows of very short tentacles relative to disc diameter. Tentacles white; oral disc pale orange. Mouth lighter in colour than rest of oral disc.

Actiniaria sp. 59*Description:*

Large anemone with multiple rows of long, thick tentacles. Oral disc is light pink; tentacles light at base and darker near tips. Column not visible.

Actiniaria sp. 65*Description:*

Medium-sized anemone with several rows of thick tentacles. Oral disc and tentacles pinkish and semi-translucent; Tips of tentacles always white. Column appears short.

Actiniaria sp. 67*Description:*

Medium-sized anemone with several rows of long tentacles. Oral disc dark orange-red near centre; light pink near periphery. Disc appears to sit on sediment; column not visible.

Actiniaria sp. 70*Description:*

Medium-sized anemone with long, thin tentacles in multiple rows. Oral disc pink in colour; column appears white. Tentacle arrangement unknown.

Actiniaria sp. 71*Description:*

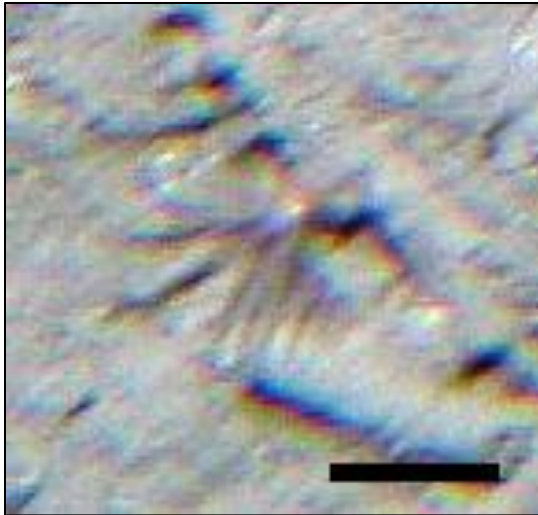
Large specimen with multiple rows of thick tentacles. Orange in colour. Column visible, but covered in sediment.

Actiniaria sp. 96*Description:*

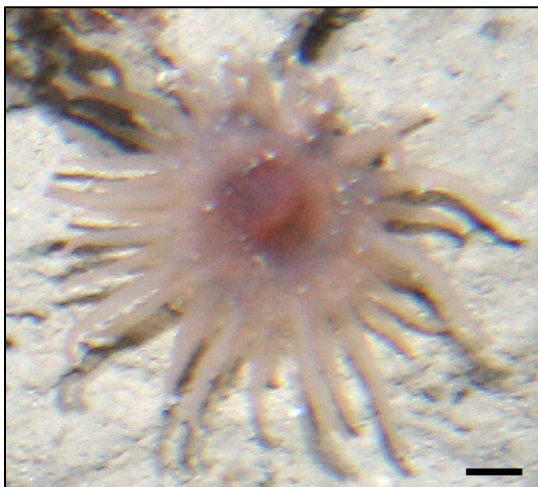
Small (~ 1 cm) anemone on soft sediment. Oral disc and tentacles rest directly on sediment. Tentacles thin and long relative to disc; sometimes barely visible.

Actiniaria sp. 97*Description:*

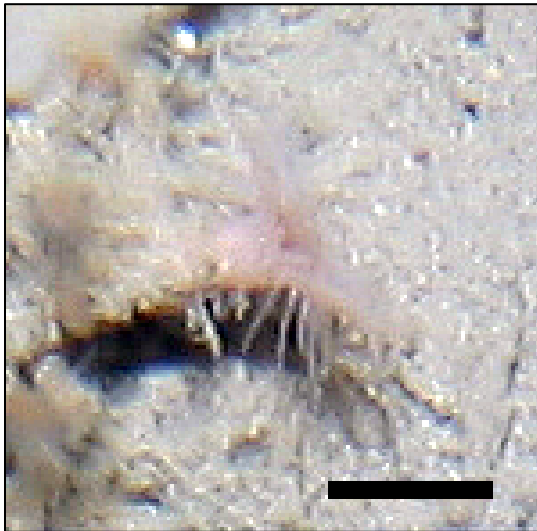
Medium-sized anemone with possibly multiple rows of long tentacles. Column not visible. Pink in colour; dark ring around mouth on oral disc.

Actiniaria sp. 98*Description:*

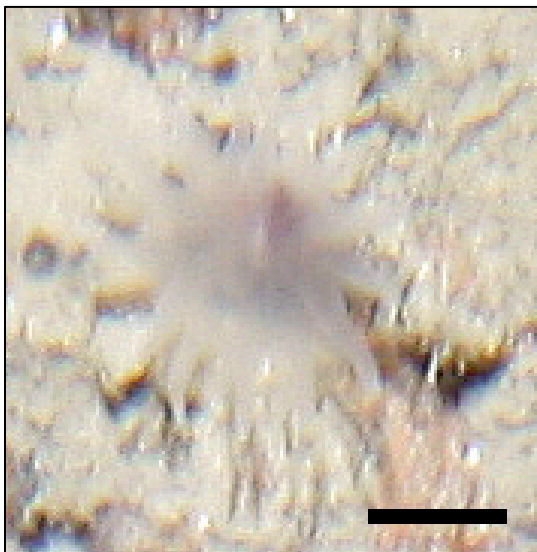
Small (~ 1 cm) anemone on soft sediment. Tentacles very long relative to the oral disc. Tube-like base, suggesting that this species may be a cerianthid anemone.

Actiniaria sp. 100*Description:*

Large anemone with several rows of long, thick tentacles. Oral disc and tentacles pink; colour darker near mouth. Tips of tentacles always white. Disc appears to rest directly on sediment. Similar to Actiniaria sp. 42.

Actiniaria sp. 107*Description:*

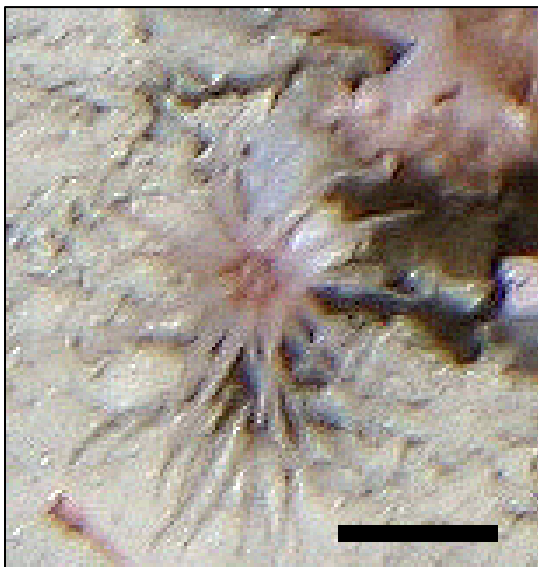
Small (~1 cm) anemone with long, slender column. Tentacles are relatively long and slender. Pink in colour; dark ring around mouth. Tube-like base.

Actiniaria sp. 111*Description:*

Medium-sized anemone with several rows of thick tentacles. Oral disc purplish in colour; rest of body grey semi-translucent. Column appears short.

Actiniaria sp. 114*Description:*

Small (~1 cm) anemone with short tentacles relative to the column. Cream-coloured. Column appears to extend out of soft sediment, suggesting that this species is either a burrowing or tube-dwelling anemone.

Actiniaria sp. 115*Description:*

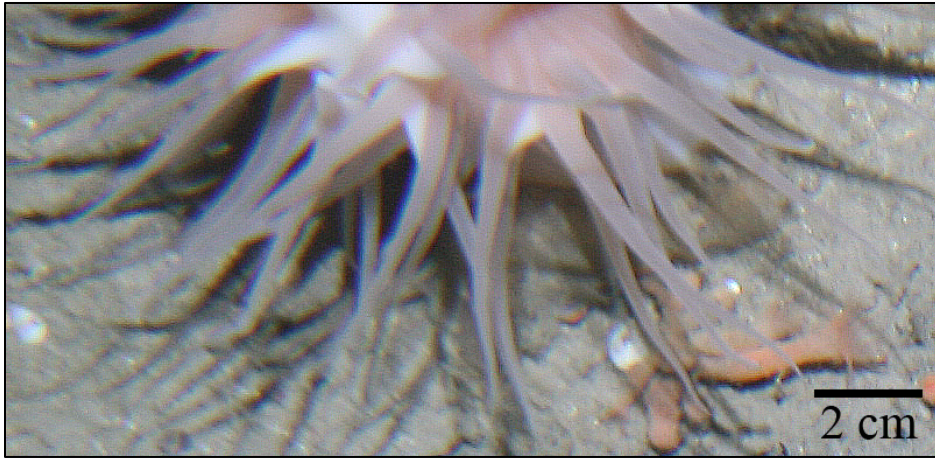
Small (~1 cm) anemone with long, slender column. Tentacles are relatively long and slender. Pink in colour; dark ring around mouth. Similar to Actiniaria sp. 107 but with thicker tentacles.

Actiniaria

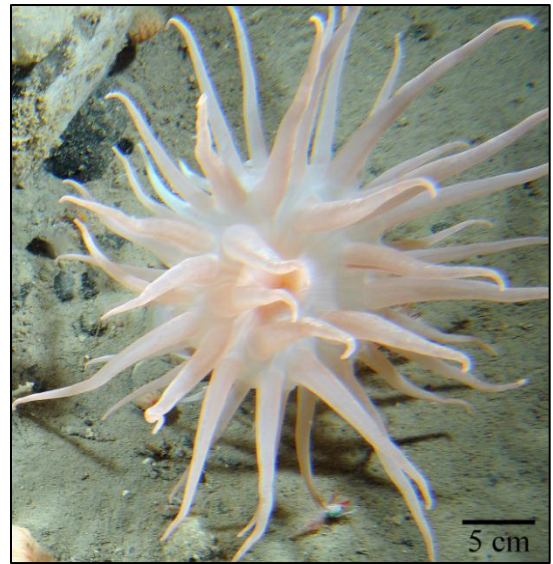


Description:

Taxon encompasses several species of Actiniaria that were difficult to distinguish. Size is usually small, colour varies from orange to pink. Close vicinity of polyps in some specimens suggests that they could be colonial.

Actinernus nobilis*Description:*

Only partially visible, but colour pattern of tentacles indicates this species is *Actinernus nobilis*.

Bolocera* spp.**Description:***

Possibly different species of large anemone from the genus *Bolocera*. Large, smooth body with protruding mouth. Numerous long tentacles in several rows. Colour ranges from pale pink to pale orange.

Hormathiidae sp. 1



Description:

Large, robust anemone attached to side of boulder. Long, thick tentacles appear to be arranged in several rows and are pink in colour. Oral disc appears folded, suggesting that this species could be a member of the genus *Actinoscyphia*. Column covered in detritus.

Hormathiidae sp. 2



Description:

Medium-sized anemone with long, slender tentacles that appear to be arranged in several rows. Tentacles and oral disc light pink; column smooth and white.

Hormathiidae sp. 3



Description:

Large, robust anemone with relatively short tentacles. Tentacles and body vibrant orange in colour; column appears smooth but is covered in detritus.

Hormathiidae sp. 4



Description:

Medium-sized anemone with long, thin tentacles. Tentacle arrangement unknown. Column appears smooth but is covered in detritus. Colour light pink.

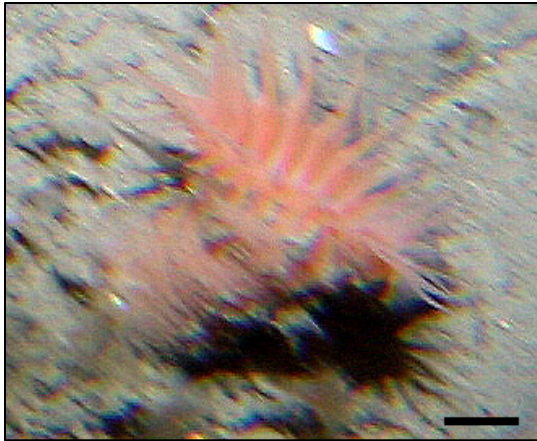
Hormathiidae sp. 5



Description:

Large, robust anemone with relatively short, thick tentacles. Tentacles appear to be arranged in two rows. Column smooth and light pink; tentacles darker pink to orange.

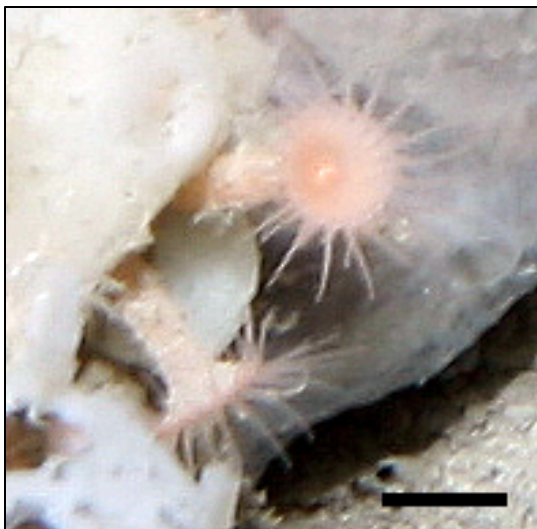
Hormathiidae sp. 6



Description:

Large, robust anemone with relatively short, thick tentacles. Tentacles arrangement unknown. Column smooth, same colour as tentacles (pink-orange).

Hormathiidae sp. 7



Description:

Relatively small anemone with long, slender column and tentacles. Tentacles arranged in two rows; pink in colour. Column smooth.

Hormathiidae



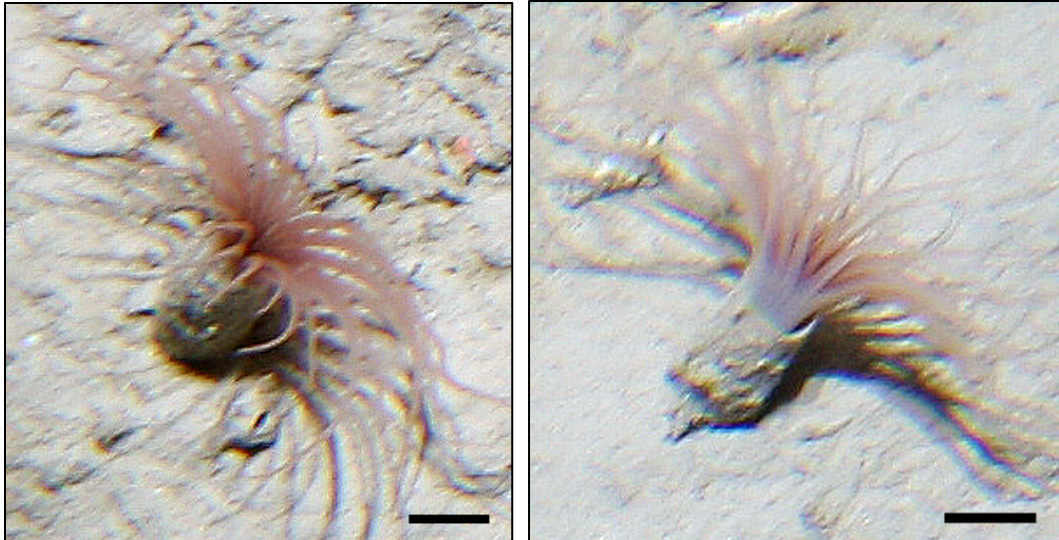
Description:

Taxon includes several different species from the Family Hormathiidae. Most specimens are closed, making identification impossible. When closed, tentacles are never fully retracted into column.

Stauropathes arctica



Cerianthidae sp. 8



Description:

Tube-dwelling anemone with long, reddish tentacles extending from a relatively short tube. May be raised from seabed with tube visible, or appear buried in sediment.

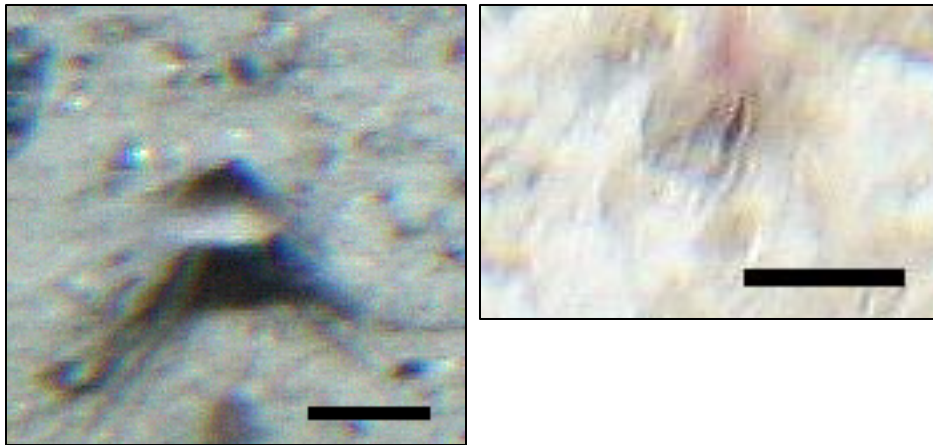
Cerianthidae sp. 12



Description:

Tube-dwelling anemone with long, reddish tentacles extending from a short tube. Appears raised from the seabed. Possibly the same as Cerianthidae sp. 8, but with tentacles partially retracted.

Cerianthidae



Description:

Taxon encompasses several species of tube-dwelling anemone. Tentacles retracted in most specimens, but range in colour from reddish to white. May be raised from seabed with tube visible, or appear buried in sediment.

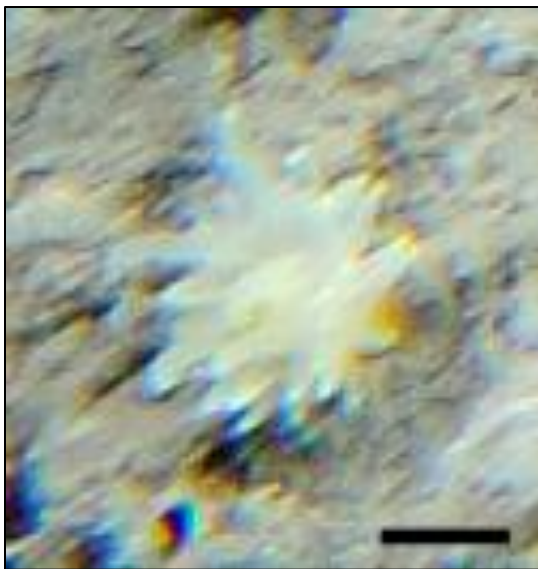
Corallimorpharia sp. 1



Description:

Solitary coral anemone. White, semi-translucent column and tentacles; large mouth. Short, stubby tentacles with white tips.

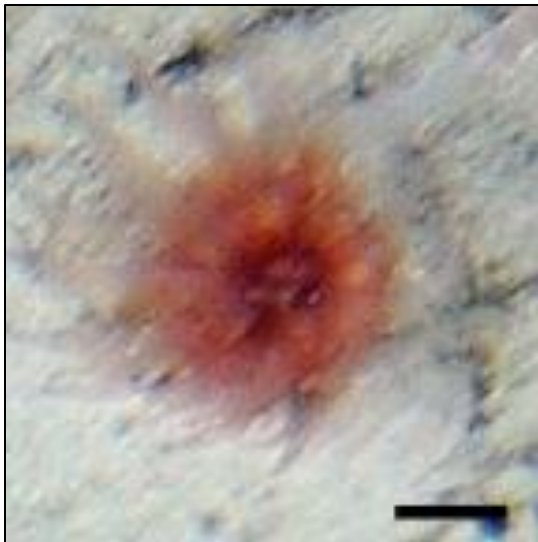
Corallimorpharia sp. 2



Description:

Solitary coral anemone. Yellowish in colour, less translucent than Corallimorpharia sp. 1. Short, stubby tentacles with white tips.

Scleractinia sp. 3



Description:

Relatively large cup coral with circular skeleton. Mouth is large and depressed. Red septa are clearly visible. Tentacles long and appear to taper to a point at the tips.

Scleractinia sp. 4



Description:

Medium-sized cup coral with circular skeleton. Mouth is smaller than Scleractinia sp. 3, and slightly raised. Septa not clearly visible. Tentacles long and relatively thick.

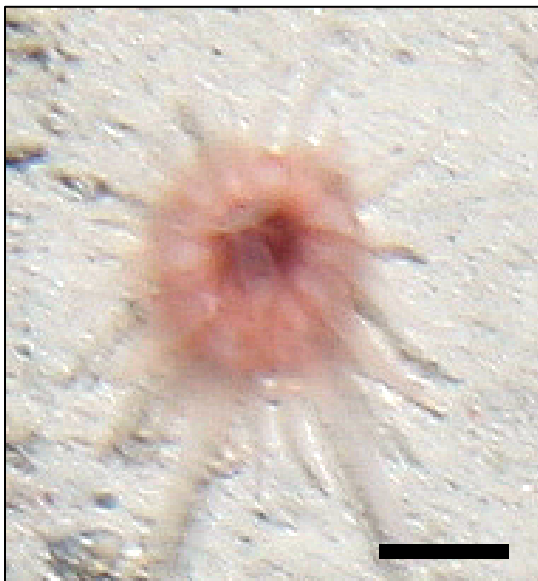
Scleractinia sp. 5



Description:

Relatively large cup coral with circular skeleton. Mouth is large and appears depressed. Septa not clear. Tentacles long and appear to taper to a point at the tips. Similar to Scleractinia sp. 3.

Scleractinia sp. 6



Description:

Relatively large cup coral with circular skeleton. Mouth is large, deep red, and appears depressed. Tissue light in colour. Septa clearly visible. Tentacles long and appear to taper to a point at the tips.

Scleractinia sp. 7*Description:*

Relatively large cup coral with circular skeleton. Mouth is large, deep red, and appears depressed. Tissue light in colour. Tentacles are numerous and thick.

Scleractinia sp. 8*Description:*

Relatively large cup coral with circular skeleton. Mouth is large, deep red, and appears raised. Septa clearly visible. Tissue light in colour. Tentacles are short and thick.

Scleractinia sp. 9



Description:

Relatively large cup coral with ovoid-shaped skeleton. Mouth is large, deep red, and appears raised. Septa not clearly visible. Tissue light in colour. Tentacles are long and thick.

Scleractinia



Description:

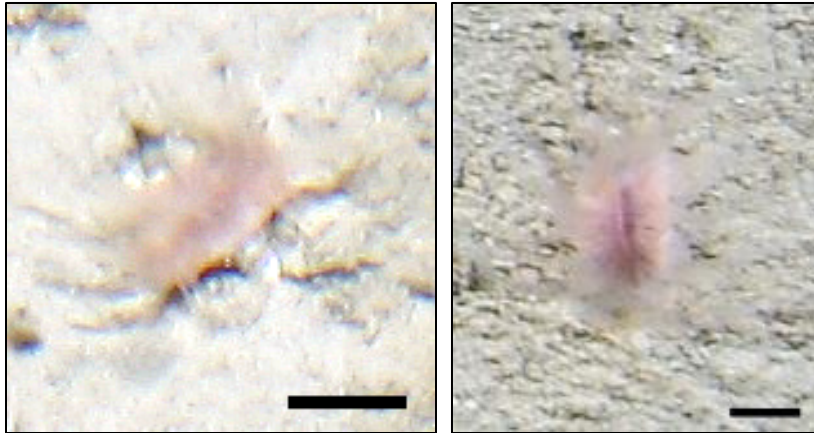
Taxon includes possibly several species of scleractinian cup coral. All are red in colour, with either a circular- or triangular-shaped skeleton. Could be juveniles of the other morphotypes.

Flabellum alabastrum



Flabellum angulare



Flabellum* spp.**Description:***

Taxon encompasses several *Flabellum* species with differing morphologies. Cups are mainly ovoid in shape, suggesting that they may be *Flabellum alabastrum*.

Zoanthidae sp. 1



Description:

Colonial zoanthid with long polyps. Column is light yellow in colour and smooth; tentacles light-pink to orange. Appears to be settled on either rock or sediment.

Zoanthidae sp. 2



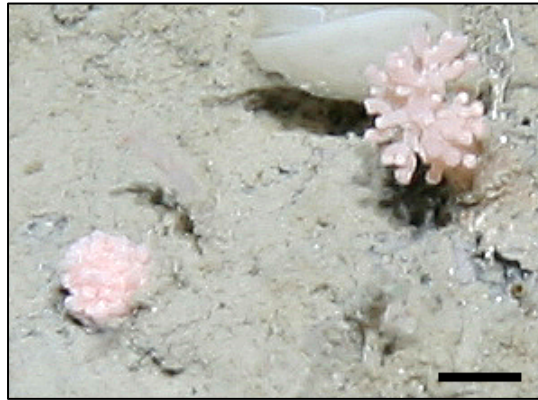
Description:

Colonial zoanthid with long polyps. Column appears to be covered in sediment. Long, thin tentacles are pinkish in colour. Attached to other biogenic structures.

Zoanthidae sp. 3*Description:*

Colonial zoanthid with long polyps. Polyps clustered tightly together; some appear to be growing on top of another. Column is light salmon-coloured and smooth; tentacles pink. On soft sediment.

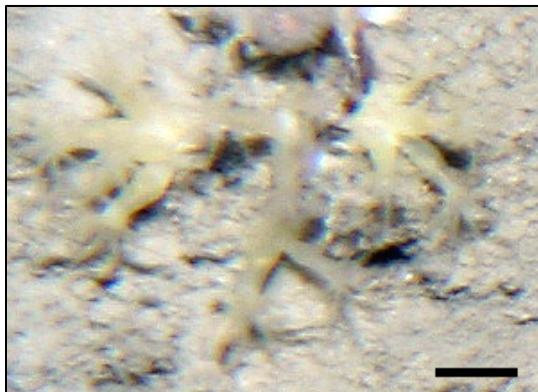
Alcyonacea sp. 2



Description:

Soft coral with large, rigid polyps. Forms a tight cluster when polyps are retracted. Pink in colour.

Alcyonacea sp. 3



Description:

Long, light-yellow polyps occurring in a cluster. Polyps appear to extend from a small round base. Could be an *Anthomastus*-like species or a colonial zoanthid.

Alcyonacea sp. 4



Description:

Single red polyp anchored in soft sediment. Possibly 8 tentacles visible. Could be *Heteropolypus* cf. *insolitus* or a species of *Anthomastus*.

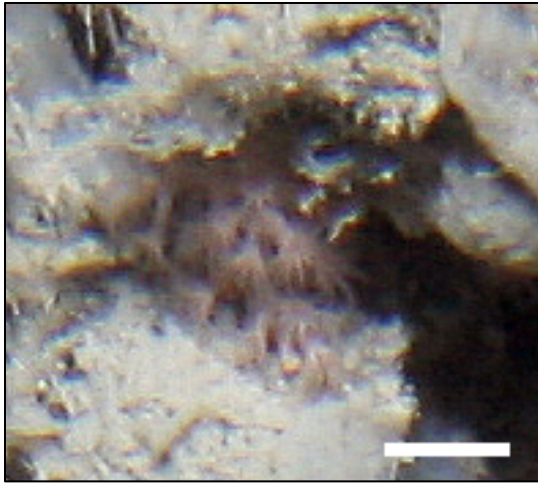
Alcyonacea sp. 5



Description:

Erect coral with several, long polyps extending from a common base. Some polyps have dark colouring running through their centre, similar to *Kophobelemnon stelliferum*.

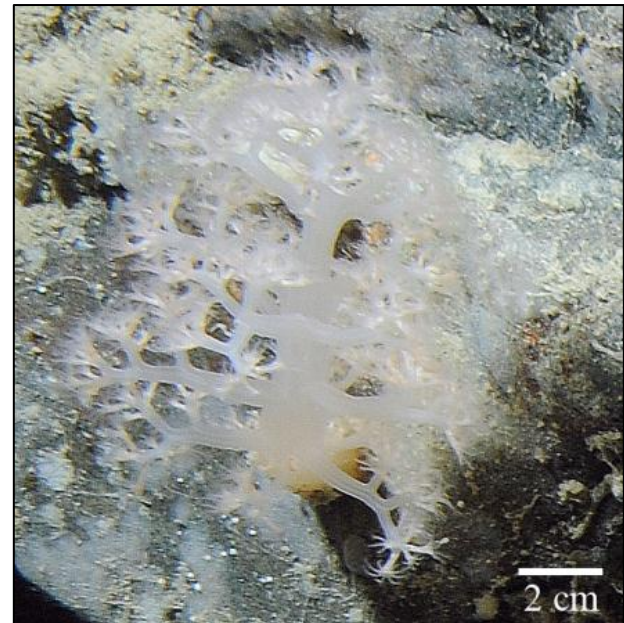
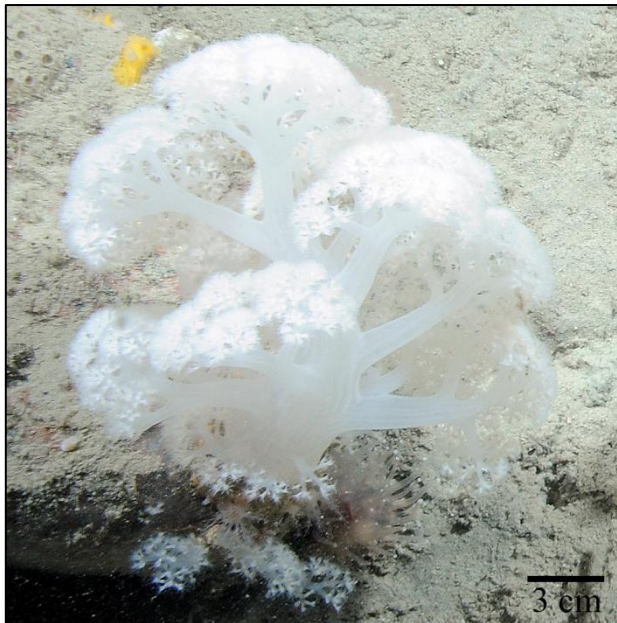
Alcyonacea sp. 6



Description:

Soft coral with large polyps and long tentacles. No stalk visible. On the underside of a rock. Could be a species from the Family Clavulariidae.

Alcyoniidae



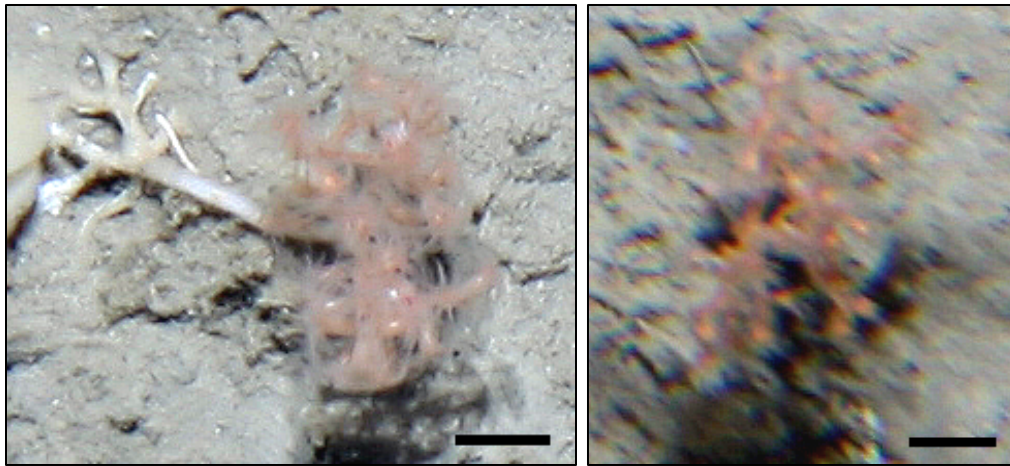
Description:

Taxon includes several species of soft coral that could not be easily distinguished from one another. Colour ranges from white to pink to purple. Among those presumed present are *Duva florida* and *Drifa glomerata*.

Heteropolypus cf. insolitus



Isididae



Description:

Taxon includes several *Acanella*-like, bushy corals with salmon-coloured polyps. Calcareous stalk and ‘holdfast’ present on one specimen. Could be *Acanella arbuscula* or another isidid coral species.

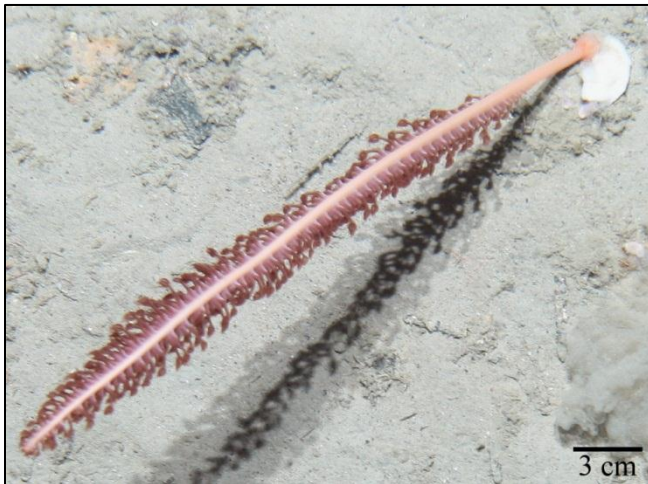
Acanella arbuscula



Anthoptilum grandiflorum

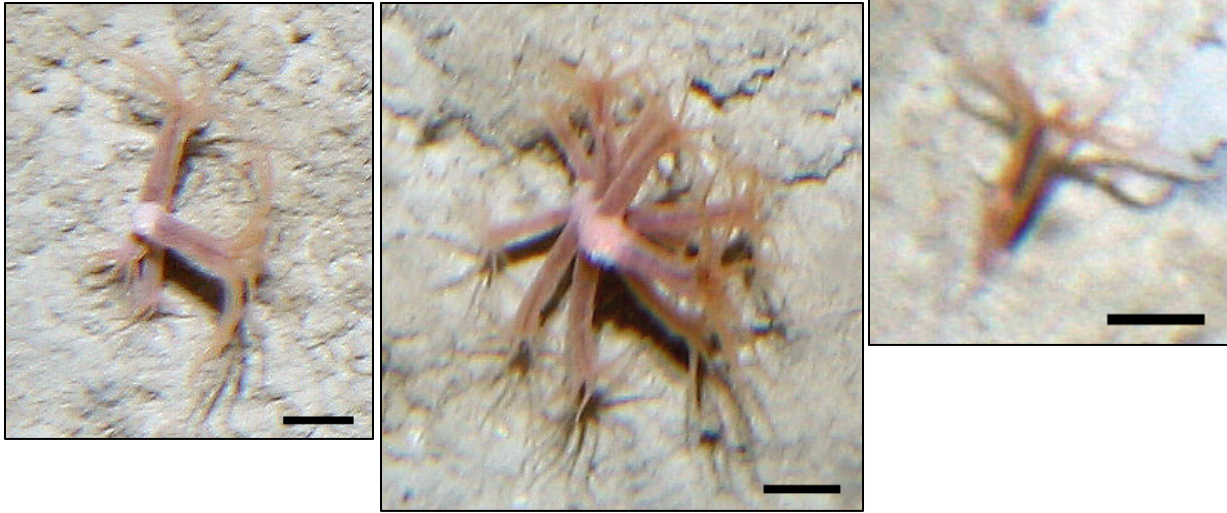


Halpteris sp. 1

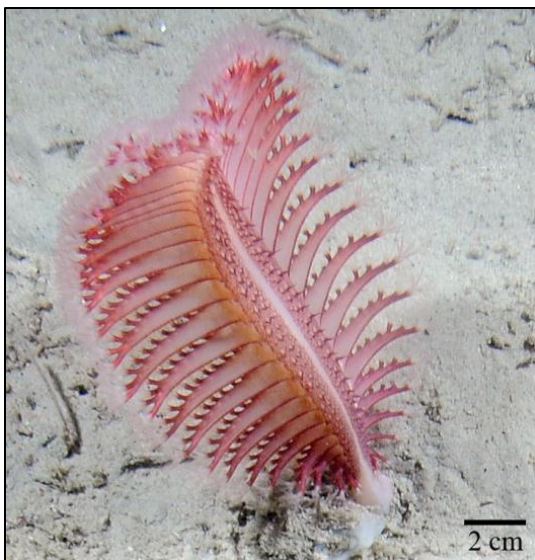


Description:

Elongate, whip-like sea pen with red polyps on one side of stalk. Likely *Halpteris finmarchica*.

Kophobelemnon* spp.**Description:***

Taxon encompasses a small sea pen with long red polyps growing directly from the white/light pink axial skeleton. Possibly all one species- *Kophobelemnon stelliferum*.

Pennatula* sp. 1**Description:***

Large, pink sea pen with numerous feathery polyps per leaf. Could be *Pennatula borealis*.

Pennatula sp. 2

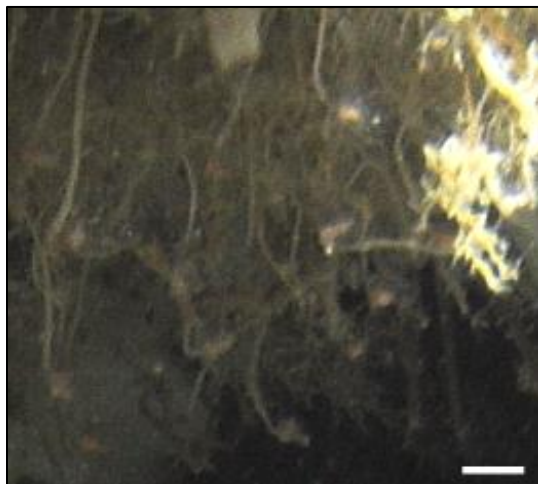


Description:

Large, fuchsia-coloured sea pen. Polyps are larger and less numerous compared to *Pennatula* sp. 1. Height and width not as large as *Pennatula* sp. 1.

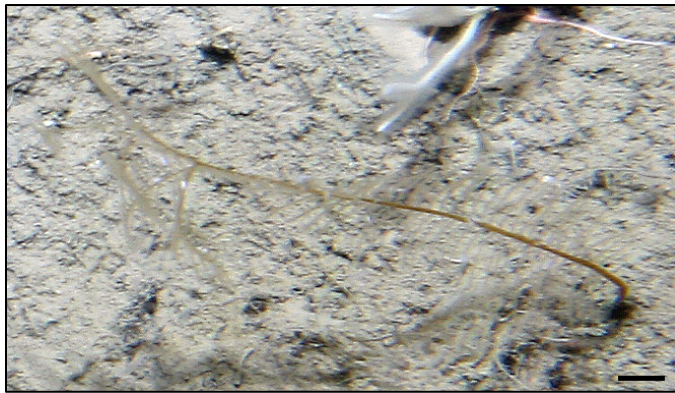
Capitata sp. 1*Description:*

Solitary hydroid with sediment-coloured stem and large, pink terminal hydranth (feeding zooid).

Tubularia sp. 1*Description:*

Erect stalk with small, triangular-shaped pink bulb (zooid at apical end). On the underside of a boulder.

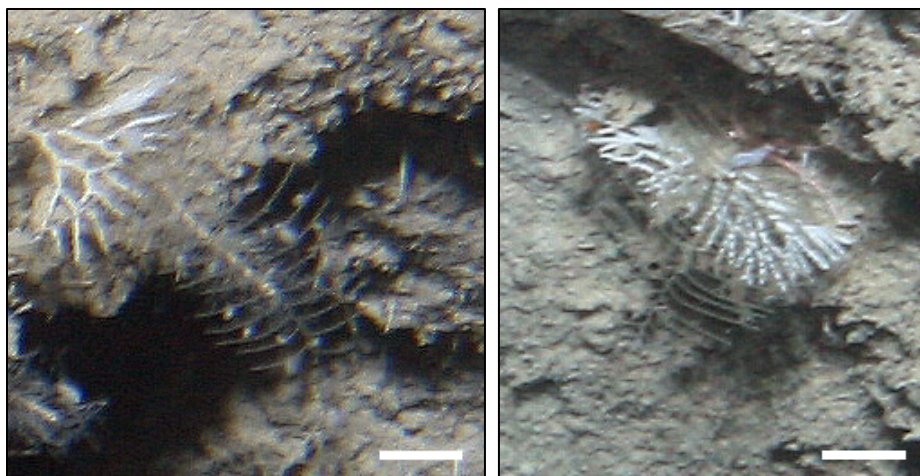
Leptothecatae sp. 1



Description:

Erect stem with dichotomous branches near apical end. Thin branches in single plane line main stem. Stem and branches brown; stem thicker than branches.

Leptothecatae sp. 2



Description:

Pinnate colony; all branches in a single plane and slightly staggered. Branches and main stem thin and brown; slightly curved.

Leptothecatae sp. 3



Description:

Pinnate colony; all branches in a single plane. Branches feathery in appearance; more numerous than *Leptothecatae* sp. 4. Branches and main stem brown; main stem thicker than branches.

Leptothecatae sp. 4



Description:

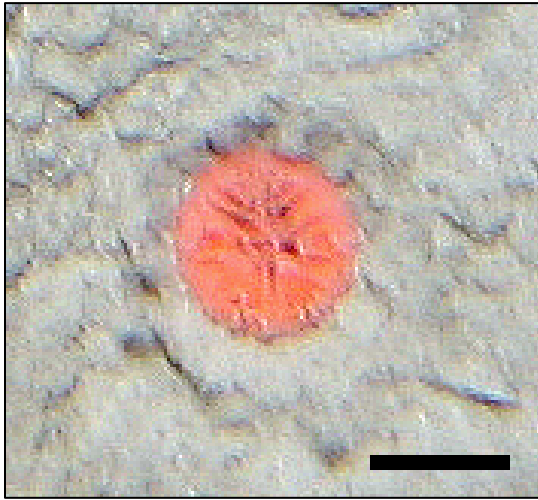
Pinnate colony; all branches in a single plane; not staggered. Branches thin, white, and rigid. Main stalk thicker than branches.

PHYLUM ECHINODERMATA

Phylum	Class	Order	Family	Taxa	ITIS TSN	Total abundance
Echinodermata	N/A	N/A	N/A	Echinodermata sp. 1	156857	2
	Asteroidea	N/A	N/A	Asteroidea sp. 11	156862	4
				Asteroidea sp. 12		1
				Asteroidea		30
		Spinulosida	N/A	Spinulosida sp. 1	157060	3
			Echinasteridae	<i>Henricia</i> sp. 1	157152	22
			Pterasteridae	<i>Pteraster</i> sp. 1	157107	1
		Valvatida	Asterinidae	<i>Tremaster mirabilis</i>	124002*	1
			Goniasteridae	<i>Ceramaster granularis</i>	156997	1
				<i>Hippasteria phrygiana</i>	157008	1
	Crinoidea	Bourgueticrinida	N/A	Bourgueticrinida sp. 1	158608	11
				Bourgueticrinida sp. 3		45
				Bourgueticrinida		449
		Comatulida	N/A	Comatulida sp. 1	158545	9
				Comatulida sp. 2		4
				Comatulida sp. 3		7

			Comatulida		28
Echinoidea	N/A	N/A	Echinoidea sp. 1	157821	1
	Echinothurioida	Echinothuriidae	<i>Phormosoma placenta</i>	157859	2
Holothuroidea	N/A	N/A	Holothuroidea sp. 1	158140	1
			Holothuroidea		3
	Dendrochirotida	Psolidae	<i>Psolus</i> spp.	158150	954
Ophiuroidea	N/A	N/A	Ophiuroidea sp. 22	157325	34
			Ophiuroidea sp. 25		18
			Ophiuroidea sp. 29		15
			Ophiuroidea sp. 36		4
			Ophiuroidea sp. 37		32
			Ophiuroidea sp. 42		10
			Ophiuroidea sp. 48		29
			Ophiuroidea sp. 50		29
			Ophiuroidea sp. 52		1
			Ophiuroidea		5198
	Ophiurida	Ophiuridae	<i>Ophiomusium lymani</i>	157438	31
	Phrynophiurida	Gorgonocephalidae	<i>Gorgonocephalus</i> sp. 1	157359	1

Echinodermata sp. 1



Description:

Partially-buried, circular organism that is likely a sand dollar. Petaloid-like structure on surface. Salmon-colour.

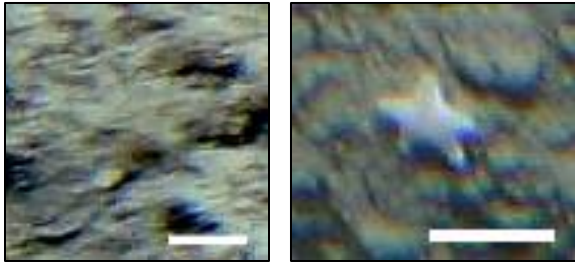
Asteroidea sp. 11*Description:*

Long-rayed sea star with small, purple-coloured central disc and 5, long white arms. Arms long relative to central disc, and with rounded tips.

Asteroidea sp. 12*Description:*

Long-rayed sea star with large, orange-coloured central disc, and 5, long orange arms. Arms long relative to central disc, and tapered at the tips.

Asteroidea



Description:

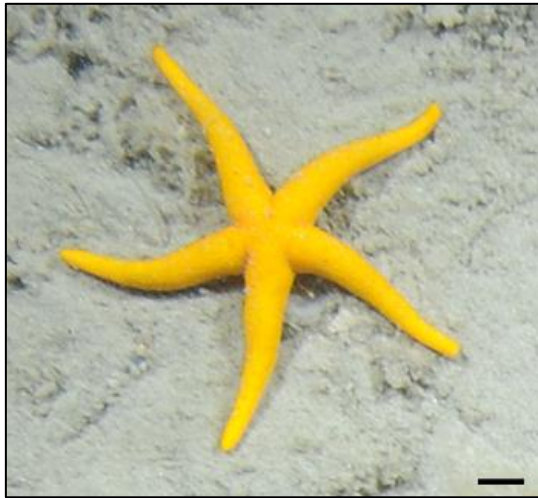
Taxon encompasses several short-rayed sea star species that are likely juveniles. Some are partially covered in sediment, making identification impossible.

Spinulosida sp. 1

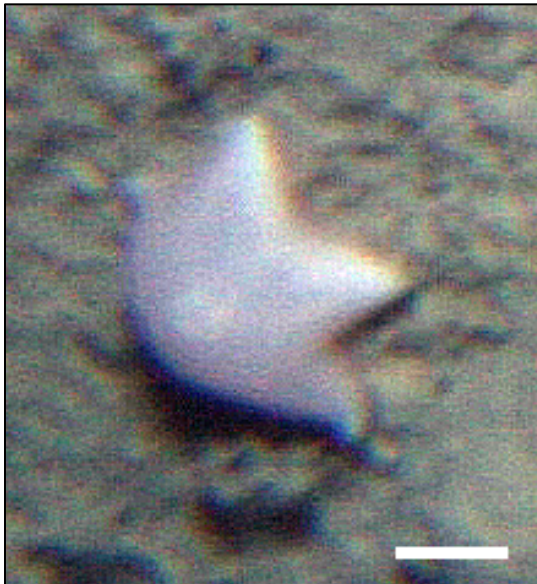


Description:

Short-rayed sea star with robust central disc, and 5 arms that are short relative to the central disc. Surface appears studded, with a small central hole. Colour yellow-orange.

Henricia* sp. 1**Description:***

Long-rayed sea star. Small central disc with 5 long arms that curl upwards at the tips. Surface smooth. Yellow in colour.

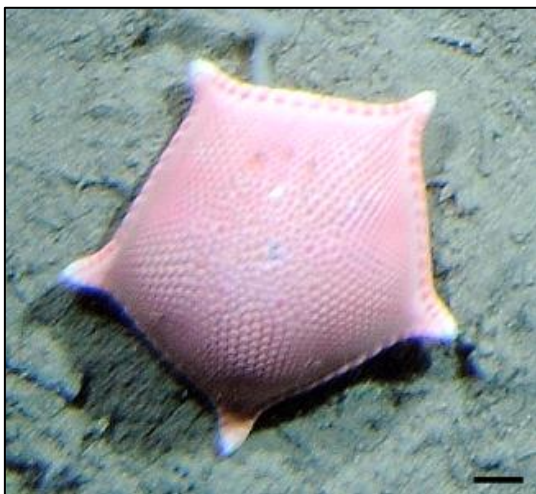
Pteraster* sp. 1**Description:***

Short-rayed sea star with robust central disc, and 5 arms that are short relative to the central disc. Large central hole. Purplish in colour.

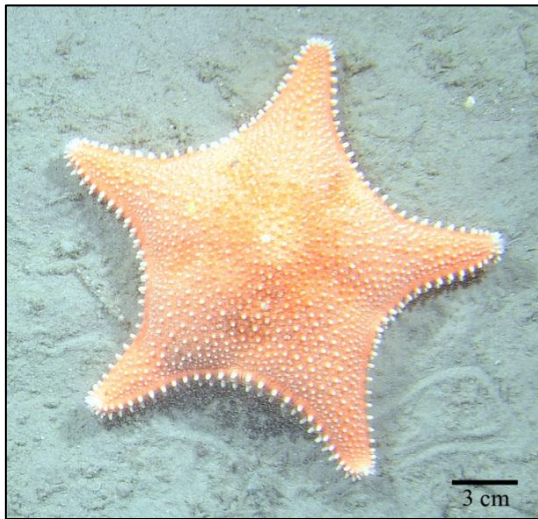
Tremaster mirabilis



Ceramaster granularis



Hippasteria phrygiana



Bourgueticrinida sp. 1



Description:

Stalked crinoid with yellow calyx and arms. Stem is white. Pinnules have a 'fuzzy' appearance. Number of arms unknown.

Bourgueticrinida sp. 3



Description:

Five-armed stalked crinoid. Calyx and arms yellow; stem yellow. Pinnules don't have a fuzzy appearance as in Bourgueticrinida sp. 1.

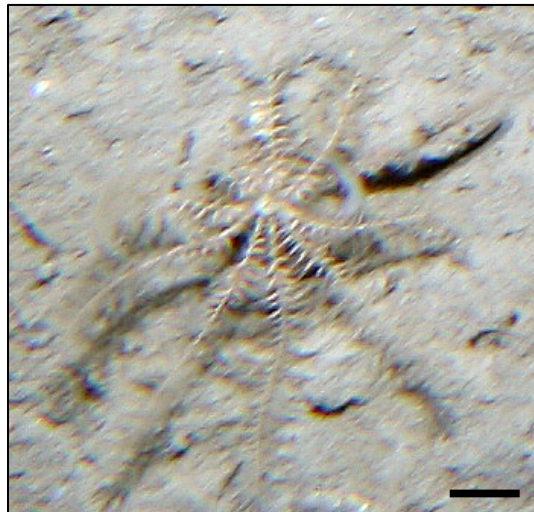
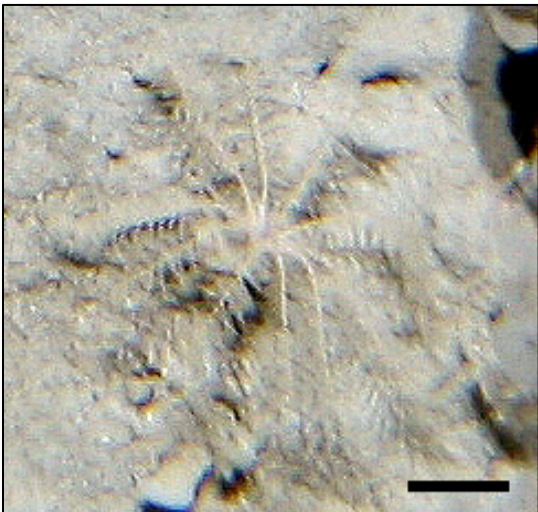
Bourgueticrinida



Description:

Several species of stalked crinoid. Usually between 5 - 7 arms. Arms are short relative to the stalk.

Comatulida sp. 1



Description:

Unstalked crinoid with 9 - 10 arms. Arms relatively straight. Colour off-white.

Comatulida sp. 2



Description:

Unstalked crinoid with between 7 - 9 arms (unknown due to orientation). Banding of colour apparent on arms, switching from orange to light-yellow. Arms curled upwards; large mouth.

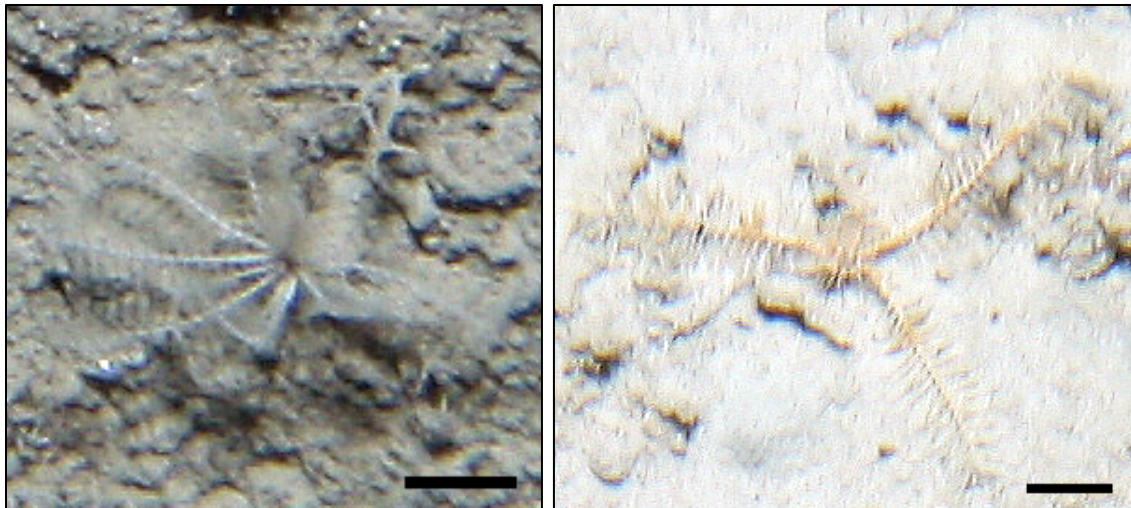
Comatulida sp. 3



Description:

Unstalked crinoid with at least 10 arms. Mainly white in colour, but with short bands of orange along arms. Arms curled near ends. Settled on a sponge.

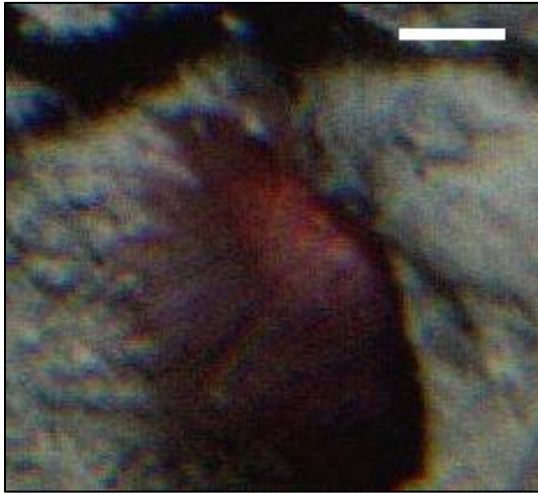
Comatulida



Description:

Taxon encompasses several species of unstalked crinoids that appear different than those listed above. Number of arms ranges from 3 to 11; colour white to yellow and banded.

Echinoidea sp. 1



Description:

Large, hemispherical test with long spines covering aboral surface. No large tube feet visible. Colour red.

Phormosoma placenta



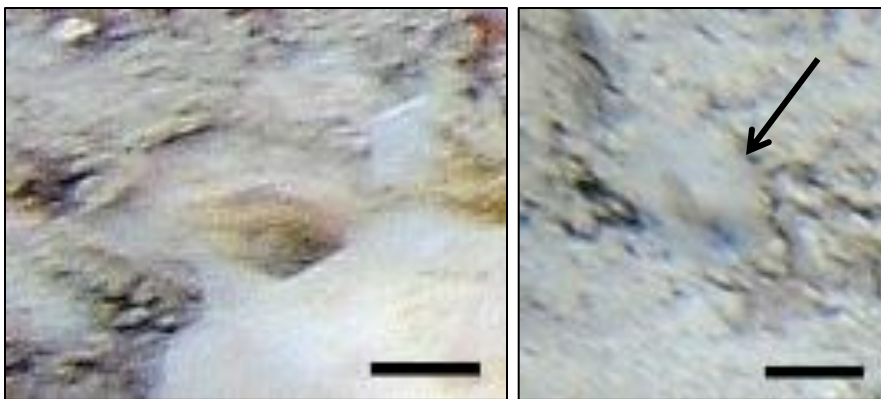
Holothuroidea sp. 1



Description:

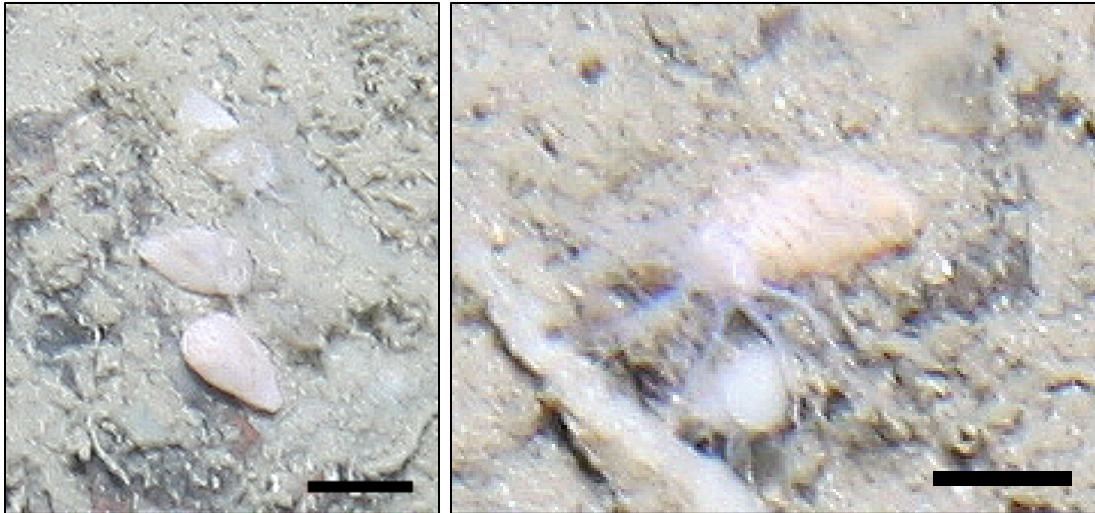
Worm-shaped holothurian. Body appears to be covered in bristles. Tentacles not visible. Purplish in colour.

Holothuroidea



Description:

Taxon includes several holothurian species. Body shape ranges from hemispherical to worm-like. No visible tentacles, suggesting that these are deposit feeders. Images containing specimens were slightly blurry.

Psolus* spp.**Description:***

Small (~1 cm), light-pink holothurian with tapering tail. Orientation of tentacles is upright, suggesting that this species is a suspension feeder. Body smooth with no visible tube feet. Originally thought to be more than 1 species, but is likely only 1 species.

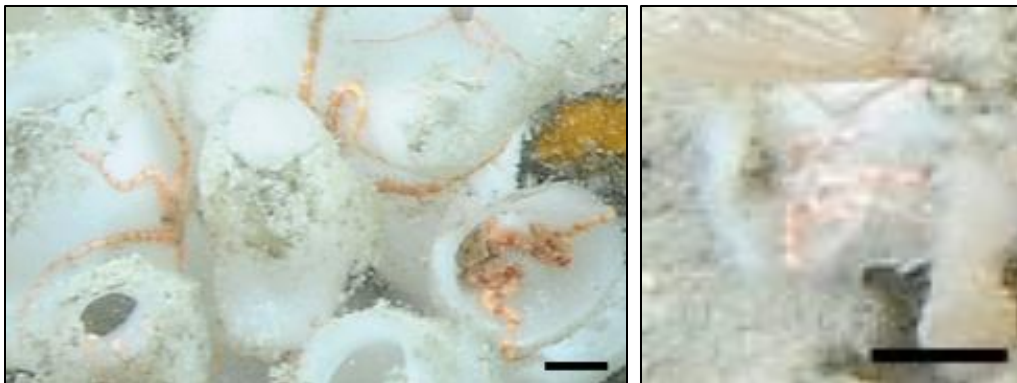
Ophiuroidea sp. 22



Description:

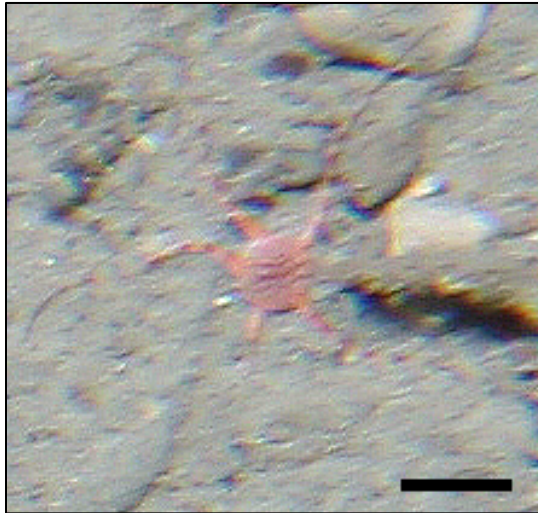
Small brittle star with dark purple central disc, and red-orange arms. Arms long relative to central disc diameter. Five arms. Always observed on sponges.

Ophiuroidea sp. 25

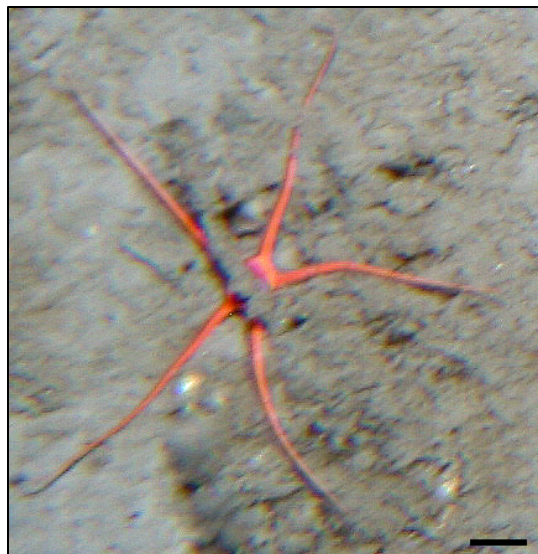


Description:

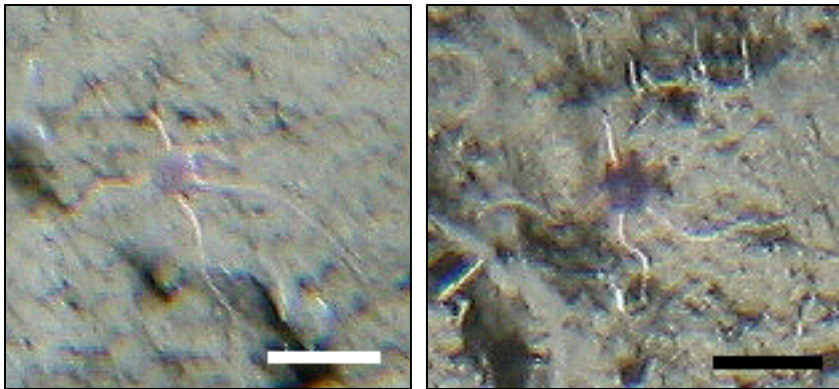
Large brittle star with light purple/brown central disc, and 5 banded arms. Arms colour alternates from red to orange. Always on or inside of the sponge *Asconema* sp. 1.

Ophiuroidea sp. 29*Description:*

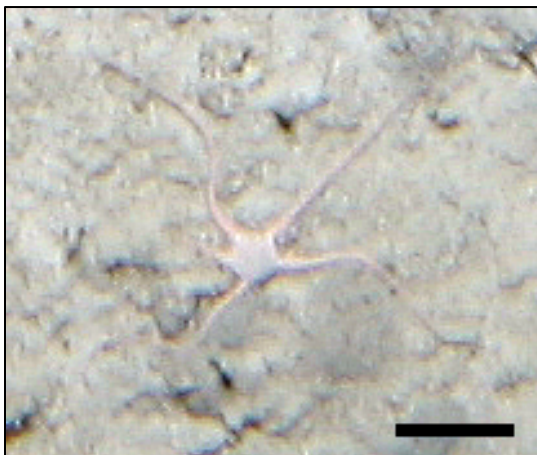
Large brittle star with a red, circular central disc, and 5 slender arms. Arms are banded, with colour alternating between red and light pink. Central disc appears 'studded'. Arms long relative to central disc diameter. On soft sediment, sometimes partially

Ophiuroidea sp. 36*Description:*

Large, robust brittle star, red in colour. Arms long relative to central disc. On soft sediment.

Ophiuroidea sp. 37*Description:*

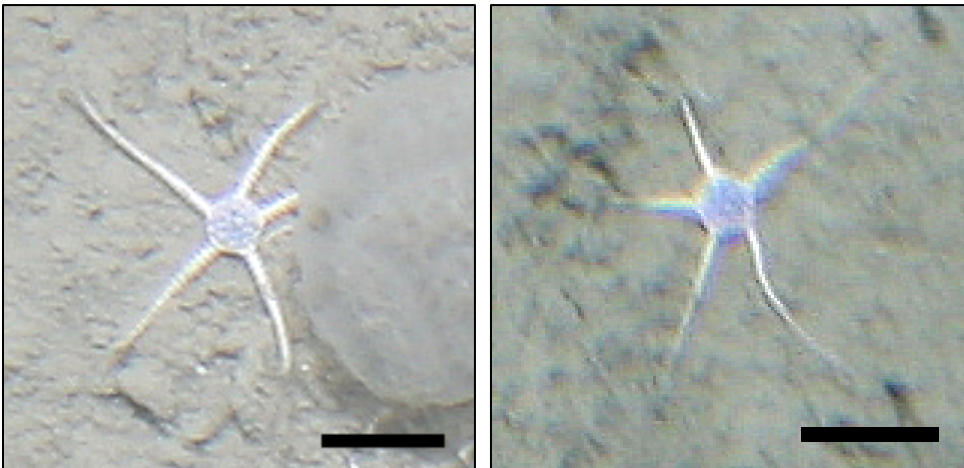
Medium-sized brittle star with purple central disc, and 5 long, slender arms. On soft sediment.

Ophiuroidea sp. 42*Description:*

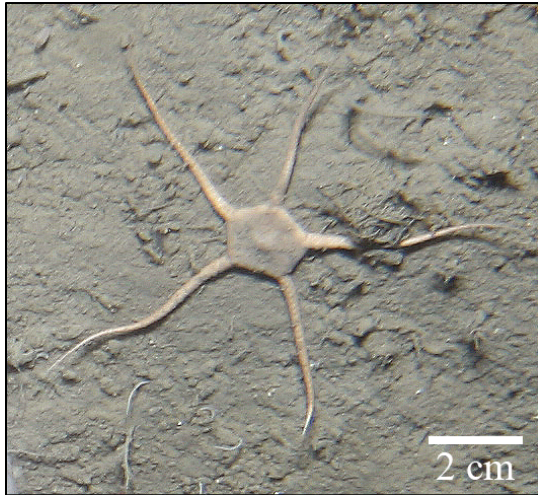
Medium-sized brittle star with pentagon-shaped central disc, and 5 long arms. Disc grey in colour; arms pink. On soft sediment.

Ophiuroidea sp. 48*Description:*

Medium-sized brittle star with pentagon-shaped central disc, and 5 long arms. Disc purple; arms pink. Arms appear to have large spines. On soft sediment.

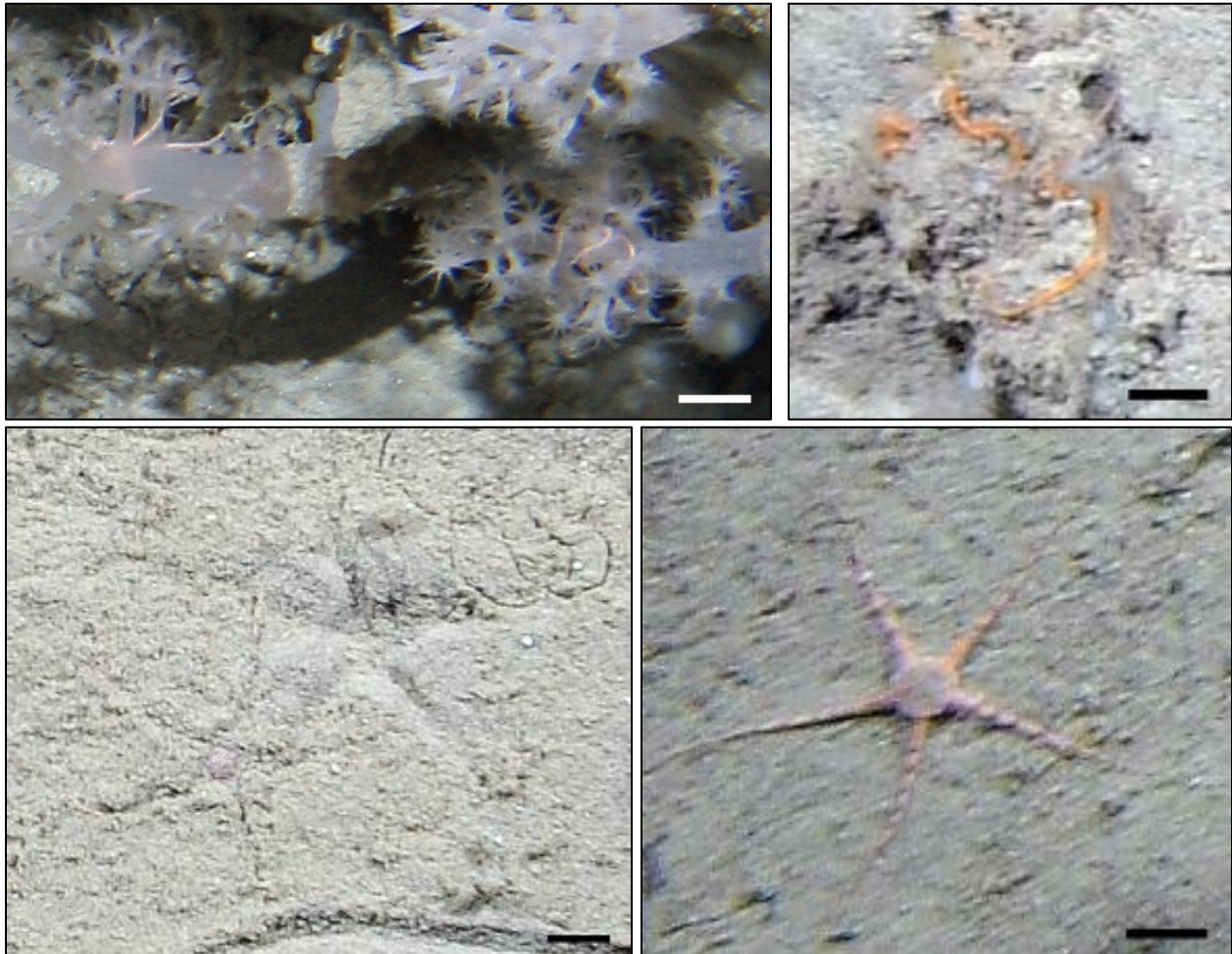
Ophiuroidea sp. 50*Description:*

Medium-sized brittle star with a pentagon-shaped central disc, and 5 arms. Central disc purple, possibly with raised plates; arms white with large spines. On soft sediment.

Ophiuroidea sp. 52*Description:*

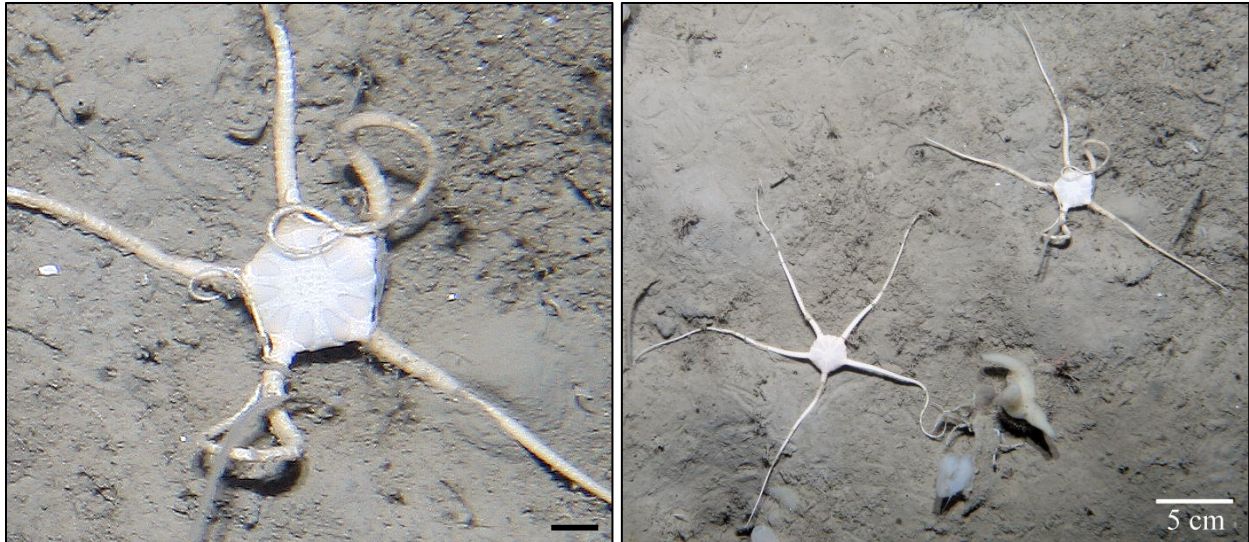
Large brittle star with pentagon-shaped central disc. Raised centre on aboral surface. Light yellow/brown in colour.

Ophiuroidea



Description:

Taxon includes various species of ophiuroid different from those described above. Most species included in this group are only partially visible, making identification difficult. Group includes burying species, and those species suspected of burying (e.g. bottom right).

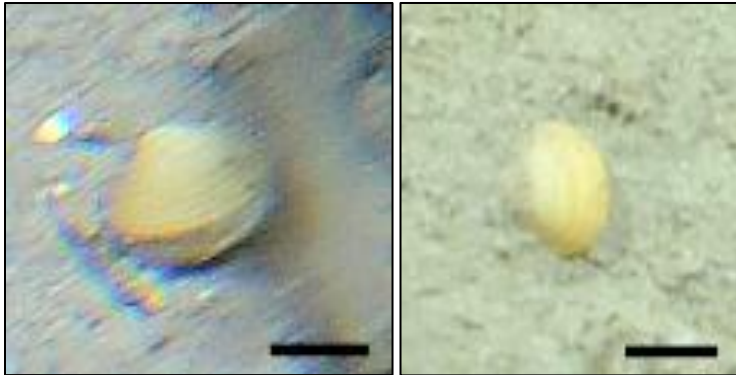
Ophiomusium lymani*Gorgonocephalus* sp. 1*Description:*

Basket star (branching arms) attached to alcyoniid soft coral. Central disc not visible.

PHYLUM MOLLUSCA

Class	Order	Family	Taxa	ITIS TSN	Total abundance	
Bivalvia	N/A	N/A	Bivalvia sp. 5	79118	29	
			Bivalvia		170	
	Veneroida	Astartidae	<i>Astarte</i> spp.	80797	14	
Cephalopoda	Octopoda	N/A	Octopoda sp. 1	82589	1	
			Octopoda sp. 2		1	
			Octopoda sp. 3		2	
			Octopoda sp. 4		2	
Gastropoda	N/A	N/A	Gastropoda sp. 3	69459	1	
			Gastropoda sp. 18		2	
			Gastropoda sp. 22		2	
			Gastropoda sp. 23		1	
		Cephalaspidea	N/A	Cephalaspidea sp. 1	76047	57
		Neogastropoda	Buccinidae	Buccinidae sp. 1	73726	1
	Buccinidae sp. 2			4		
	Buccinidae sp. 3			2		
	Buccinidae sp. 4			2		
	Buccinidae			8		
	<i>Colus</i> sp. 1			73892		1
		Neotaenioglossa	Naticidae	Naticidae sp. 1	72878	2
				Aporrhaididae		<i>Aporrhais occidentalis</i>
		Nudibranchia	N/A	Nudibranchia sp. 1	78156	2
	<i>Coryphella</i> spp.			78645	17	
Polyplacophora	N/A	N/A	Polyplacophora	78807	26	
Scaphopoda	N/A	N/A	Scaphopoda	82115	131	

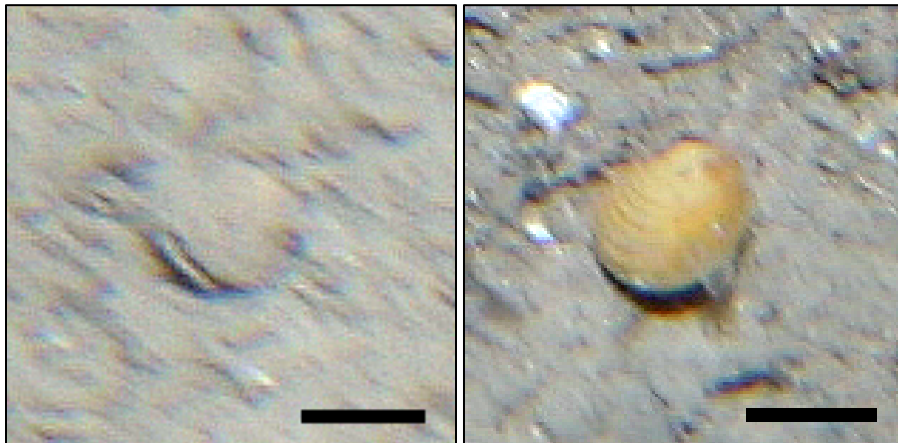
Bivalvia sp. 5



Description:

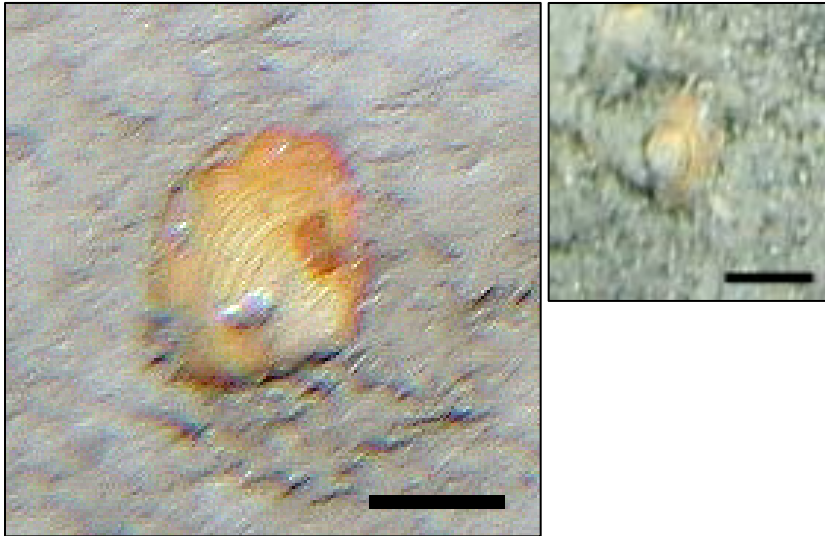
Bivalve with rounded-triangular shape. Growth rings are concentric with the umbo. Colour of shell is light yellow; lighter at the umbo. Could be a species of *Astarte*.

Bivalvia



Description:

Several species of bivalve suspected. Shell shape and colour not always obvious due to partial burying in the sediment.

Astarte* spp.**Description:***

Several species of bivalve with rounded-triangular shape. Growth rings are concentric with the umbo. Colour orange or yellow; umbo usually lighter than rest of shell.

Octopoda sp. 1



Description:

Small octopus partially hidden under ascidians. Body red to purplish; large eye visible. Possibly *Bathypolypus arcticus*.

Octopoda sp. 2



Description:

Small (~1 cm), red in colour with two large eyes. Could be a squid.

Octopoda sp. 3



Description:

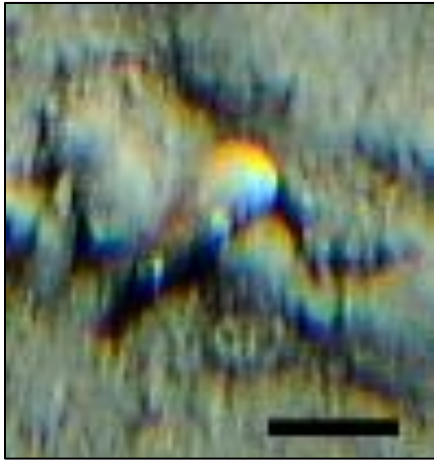
Large, elongated body. One large eye visible on either side of body. Body surface appears spotted or punctate. May have been mistakenly identified as an octopus, but could be a squid.

Octopoda sp. 4



Description:

Partially cutoff at photo edge, but tentacles clearly visible. Appears larger than other octopuses. Body red to purplish.

Gastropoda sp. 3*Description:*

Small (~1 cm), elongate shell. Whorls and sculpturing not clearly visible.

Gastropoda sp. 18*Description:*

Medium-sized shell; aperture appears square-shaped. At least 3 whorls on spire. Sculpturing may be present. Shell light pink to purplish.

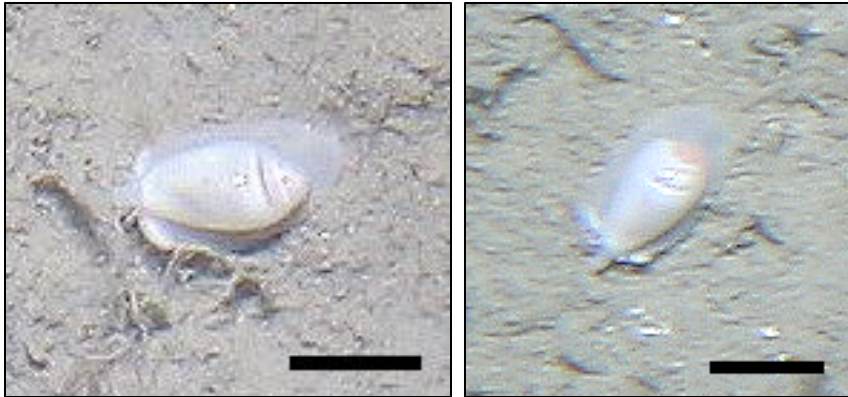
Gastropoda sp. 22*Description:*

Large, substantial shell with deep curve. Number of whorls unknown. Long anterior canal that is blunt at the end. Shell appears orangish in colour but is partially sediment covered.

Gastropoda sp. 22*Description:*

Shell shape, size, and sculpturing suggest that this species is *Aporrhais occidentalis* but with wing underdeveloped (juvenile) or partially buried in the sediment.

Cephalaspidea sp. 1



Description:

Small (~1 cm) gastropod with football-shaped external shell and large flat foot that extends beyond the shell when small. One pair of tentacles sometimes visible. Shell and body white to faint pink; end of spire usually salmon-coloured or purple.

Buccinidae sp. 1*Description:*

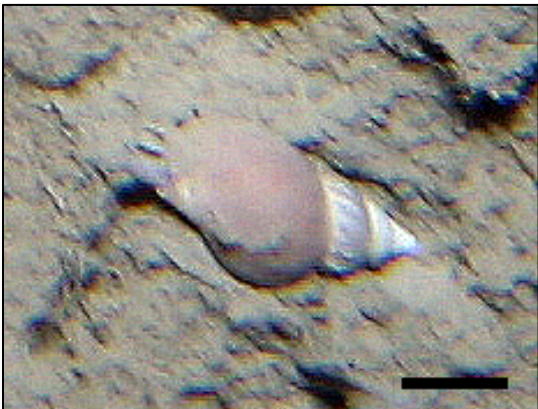
Medium-sized shell; size of aperture unknown. At least 3 whorls on spire. Shell orangish in colour; spire more purple.

Buccinidae sp. 2*Description:*

Elongated shell; size of aperture unknown. At least 3 whorls on spire. Sculpturing prominent. Deep curve in shell. Shell orangish in colour; spire more purple.

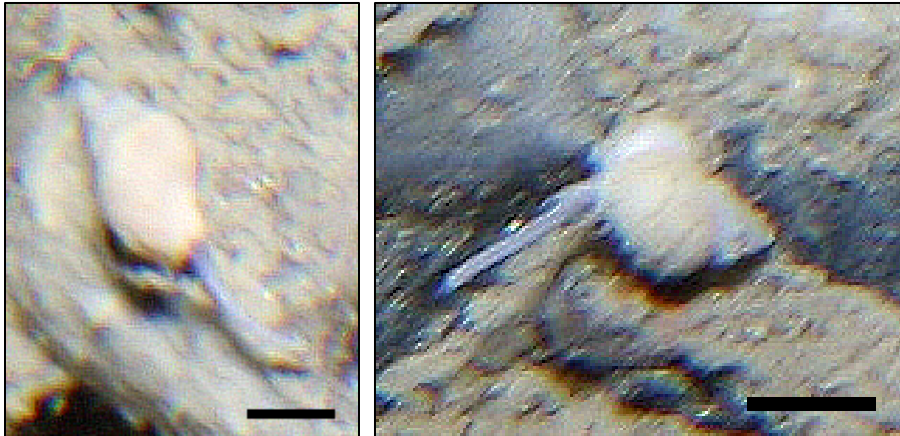
Buccinidae sp. 3*Description:*

Medium-sized shell; size of aperture unknown. At least 3 whorls on spire. Sculpturing prominent. Shell light pink to white.

Buccinidae sp. 4*Description:*

Shell more rounded than elongated; size of aperture unknown. At least 3 whorls on spire. Sculpturing prominent. Shell rose-coloured; spire whiter.

Buccinidae



Description:

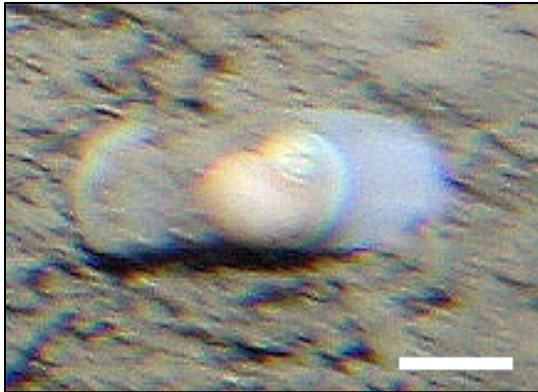
Taxon encompasses likely several species of gastropod. Shells are usually small (~1 - 2 cm) and vary in shape from round to elongate.

Colus sp. 1



Description:

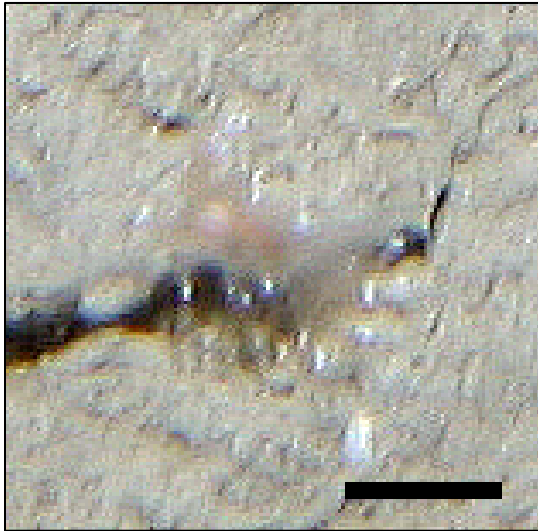
Large, substantial shell with operculum visible. At least 6 whorls in a high spiral. Long anterior canal suggests this species is a member of the genus *Colus*.

Naticidae sp. 1*Description:*

Globose shell with large foot extended beyond the shell. Spire short. Shell light pink in colour.

Aporrhais occidentalis

Nudibranchia sp. 1



Description:

Small (~1.5 cm) nudibranch. Long cerata with white tips cover body except at the head. Anterior tentacles not clearly visible.

***Coryphella* spp.**



Description:

Taxon includes at least two species of nudibranch. Cerata cover body except on head. Number of pairs of anterior tentacles appears to range from 1 to 2. Colour varies from bright salmon-coloured to dull pink.
