



Scientific Excellence • Resource Protection & Conservation • Benefits for Canadians  
Excellence scientifique • Protection et conservation des ressources • Bénéfices aux Canadiens

## **Benthic Infaunal Survey of Alice Arm and Hastings Arm, British Columbia – October, 1989**

by  
B.J. Burd  
Galatea Research Inc.  
Brentwood Bay, B.C.  
and  
R.O. Brinkhurst  
Ocean Ecology Division  
Institute of Ocean Sciences

Department of Fisheries and Oceans  
Institute of Ocean Sciences  
Sidney, B.C.

1990

**Canadian Data Report of  
Hydrography and Ocean Sciences No. 82**



Fisheries  
and Oceans

Pêches  
et Océans

Canada

## **Canadian Data Report Of Hydrography and Ocean Sciences**

Data reports provide a medium for the documentation and dissemination of data in a form directly useable by the scientific and engineering communities. Generally, the reports contain raw and/or analyzed data but will not contain interpretations of the data. Such compilations commonly will have been prepared in support of work related to the programs and interests of the Ocean Science and Surveys (OSS) sector of the Department of Fisheries and Oceans.

Data reports are not intended for general distribution and the contents must not be referred to in other publications without prior written authorization from the issuing establishment. The correct citation appears above the abstract of each report. Data reports are abstracted in *Aquatic Sciences and Fisheries Abstracts* and indexed in the Department's annual index to scientific and technical publications.

Data reports are produced regionally but are numbered nationally. Requests for individual reports will be filled by the issuing establishment listed on the front cover and title page. Out of stock reports will be supplied for a fee by commercial agents.

Regional and headquarters establishments of Ocean Science and Surveys ceased publication of their various report series as of December 1981. A complete listing of these publications is published in the *Canadian Journal of Fisheries and Aquatic Sciences*, Volume 39: Index to Publications 1982. The current series, which begins with report number 1, was initiated in January 1982.

## **Rapport statistique canadien sur l'hydrographie et les sciences océaniques**

Les rapports statistiques servent de véhicule pour la compilation et la diffusion des données sous une forme directement utilisable par les scientifiques et les techniciens. En général, les rapports contiennent des données brutes ou analysées, mais ne fournissent pas d'interprétation des données. Ces compilations sont préparées le plus souvent à l'appui de travaux liés aux programmes et intérêts du service des Sciences et levés océaniques (SLO) du ministère des Pêches et des Océans.

Les rapports statistiques ne sont pas destinés à une vaste distribution et leur contenu ne doit pas être mentionné dans une publication sans une autorisation écrite préalable de l'établissement auteur. Le titre exact paraît au-dessus du résumé de chaque rapport. Les rapports statistiques sont résumés dans la revue *Résumés des sciences halieutiques et aquatiques*, et ils sont classés dans l'index annuel des publications scientifiques et techniques du Ministère.

Les rapports statistiques sont produits à l'échelon régional, mais numérotés à l'échelon national. Les demandes de rapports seront satisfaites par l'établissement auteur dont le nom figure sur la couverture et la page du titre. Les rapports épuisés sont fournis contre rétribution par des agents commerciaux.

Les établissements des Sciences et levés océaniques dans les régions et à l'administration centrale ont cessé de publier leurs diverses séries de rapports en décembre 1981. Une liste complète de ces publications figure dans le volume 39, Index des publications 1982, du *Journal canadien des sciences halieutiques et aquatiques*. La série actuelle a commencé avec la publication du rapport numéro 1 en janvier 1982.

Canadian Data Report of  
Hydrography and Ocean Sciences No. 82

1990

Benthic Infaunal Survey of Alice Arm  
and Hastings Arm, British Columbia - October, 1989

by

B.J. Burd  
Galatea Research Inc.  
Brentwood Bay, B.C.

and

R.O. Brinkhurst  
Ocean Ecology Division  
Institute of Ocean Sciences

Department of Fisheries and Oceans  
Institute of Ocean Sciences  
Sidney, B.C.



DSS Contract #: FP941-9-7560/01-XSA

Copyright Minister of Supply and Services Canada 1990  
FS-97-16/82 ISSN - 0711 - 6721

Correct citation for this publication:

Burd, B.J. and R.O. Brinkhurst. 1990. Benthic Infaunal Survey of Alice Arm and Hastings Arm, B.C. - October, 1989. Can. Data Rep. Hydrogr. Ocean Sci. No. 82. 23pp.

ABSTRACT

Burd, B.J. and R.O. Brinkhurst. 1990. Benthic Infaunal Survey of Alice Arm and Hastings Arm, B.C. - October, 1989. Can. Data Rep. Hydrogr. Ocean Sci. No. 82. 23pp.

In October 1989, a benthic invertebrate faunal survey was conducted in Alice Arm and Hastings Arm, British Columbia. In this report, we include raw data from that survey and preliminary statistical analyses of this dataset. This represents the fourth in a series of similar benthic surveys conducted in this area since 1982.

Keywords: Benthic Infauna, Alice Arm.

RESUMÉ

Burd, B.J. and R.O. Brinkhurst. 1990. Benthic Infaunal Survey of Alice Arm and Hastings Arm, B.C. - October, 1989. Can. Data Rep. Hydrogr. Ocean Sci. No. 82. 23pp.

En octobre 1989 un relevé de la faune benthique des invertébrés a été réalisé dans le bras Alice et dans le bras Hastings, Colombie-Britannique. Ce rapport présente des données brutes du relevé et des analyses statistiques préliminaires de cette série de données. Le rapport représente le quatrième rapport d'une série de relevés benthiques pareils réalisés dans cette région depuis 1982.

Mots-clés: faune benthique, Alice Arm.

Abstract/Resume	iii
Introduction	1
Methods	1
Data Analyses	2
Acknowledgements	2
References	3
Table 1. Station coordinates	4
Table 2. Sediment particle size analyses	5
Table 3. Quality control analysis	6
Figure 1. Study area	7
Figure 2. Station locations	8
Figure 3. Abundance dendrogram - all replicates	9
Figure 4. Abundance dendrogram - replicates averaged	10
Figure 5. Sediment/depth dendrogram	11
Appendix 1. List of Taxa found in all 4 surveys	12
Appendix 2. Species abundance data	20
Appendix 3. Sigtree results for 1989 abundance data	22
Appendix 4. Comrel results for abundance vs sediment/depth dendrograms	23

## INTRODUCTION

This report outlines the results of the fourth benthic infaunal survey of Alice Arm and Hastings Arm carried out by the Ocean Ecology Division of the Institute of Ocean Sciences, Sidney, British Columbia. The first three surveys are detailed in Kathman et al. (1983,1984) and Brinkhurst et al. (1987). The four surveys were conducted in October of 1982, 1983, 1986 and 1989. The data for the 1989 cruise, contained herein, were analysed as part of a Supply and Services contract with Galatea Research Inc.

The study was initiated to examine the long-term effects of mine tailings discharges on the benthic invertebrate fauna of Alice Arm, B.C. The AMAX Kitsault molybdenum mine discharged tailings into the head of Alice Arm for 18 months, ending in November 1982, when the mine closed operations indefinitely.

## METHODS

Benthic sampling methods are detailed in Brinkhurst et al. 1987. The sampling was conducted by personnel from the Institute of Ocean Sciences and Galatea Research Inc. aboard CSS Vector in October 1989. Station coordinates and depths are given in Table 1. Sample areas and station locations are illustrated in Figures 1 and 2. Two replicate grabs (Smith-McIntyre 0.1m<sup>2</sup> area) were taken at each sampling location in Alice Arm and Hastings Arm. A core sample was taken from each grab for sediment particle size analysis (see Brinkhurst et al. 1987). Results of sediment analyses are given in Table 2.

The remainder of each sample was washed through a 1.0mm screen, preserved and later sorted in the laboratory at the Institute of Ocean Sciences into major taxonomic groups. Twenty percent of the samples (5 of 24) were then resorted by the taxonomic supervisor. If more than 5% additional animals had been found during the resort in any given sample, the entire set of samples would have been resorted. This quality control data is given in Table 3.

Taxa were identified by the following authorities:

Polychaeta	Dr. Howard Jones, Marine Taxonomic Services, Corvallis, Oregon.
Crustacea, Echinodermata Varia	Dr. William Austin, Khoyatan Marine Laboratory, Duncan, B.C.
Amphipoda	Dr. Craig Staude, Friday Harbour Marine Laboratory
Mollusca	Dr. Robert Reid, University of Victoria

A list of taxa identified during the study, and the resulting abundances per 0.1m<sup>2</sup> are given for each taxon and station in Appendices 1 and 2.

## DATA ANALYSIS

Following the methods in Brinkhurst et al. 1987, a Bray-Curtis cluster analysis was carried out first to show groupings of individual replicate samples (Figure 3), followed by the same analysis averaging replicates for each station (Figure 4), with significance testing for the validity of cluster groupings (SIGTREE - Nemec and Brinkhurst 1988a). The null hypothesis that a given grouping was homogeneous (no significant differences between stations) was tested for each linkage. The results are given in Appendix 3.

A similar cluster analysis was carried out including depth, percent silt/clay and percent sand for each replicate (Figure 5). The  $H_0$  that each linkage in the abundance dendrogram (Figure 4) was significantly different from the same linkage in the depth/sediment dendrogram (Figure 5) was tested using COMTREL (Nemec and Brinkhurst 1988b). Results are given in Appendix 4.

## ACKNOWLEDGEMENTS

The authors extend their thanks to D. Moore and the crew of the CSS *Vector*, Institute of Ocean Sciences, J. Boyd and D. Goyette, Environment Canada, and D. Bright, Biology Department, University of Victoria, for technical assistance and cooperation during the 1989 field sampling program. Sorting of taxa into taxonomic groups was contracted to Moira Galbraith.



## REFERENCES

- Austin, W. 1985. An annotated checklist of marine invertebrates in the cold temperate northeast Pacific. Khoyatan Marine Laboratory, Cowichan Bay, B.C. 682pp.
- Brinkhurst, R.O., B.J. Burd and R.D. Kathman. 1987. Benthic studies in Alice Arm, B.C. during and following cessation of mine tailings disposal, 1982 to 1986. Can. Tech. Rep. Hydrogr. Ocean Sci. 89: 45pp.
- Kathman, R.D., R.O. Brinkhurst, R.E. Woods and D.C. Jeffries. 1983. Benthic studies in Alice Arm and Hastings Arm, B.C. in relation to mine tailings dispersal. Can. Tech. Rep. Hydrogr. Ocean Sci. 22: 30pp.
- Kathman, R.D., R.O. Brinkhurst, R.E. Woods and S.F. Cross. 1984. Benthic studies in Alice Arm and Hastings Arm, B.C. following cessation of mine tailings disposal. Can. Tech. Rep. Hydrogr. Ocean Sci. 37: 57pp.
- Nemec, A. and R.O. Brinkhurst. 1988a. Using the bootstrap to assess statistical significance in the cluster analysis of species abundance data. Can. J. Fish. Aquat. Sci. 45: 965-970.
- Nemec, A. and R.O. Brinkhurst. 1988b. The Fowlkes-Mallows statistic and pattern recognition in cluster analysis. Can. J. Fish. Aquat. Sci. 45: 971-975.

Table 1. Station locations and depths for Alice Arm, 1989.

Station	Latitude	Longitude	Depth
CCNA	5526.7	12631.7	280
CCNB	5526.7	12631.7	278
CCMA	5526.6	12932.0	294
CCMB	5526.6	12932.0	296
CCSA	5526.5	12931.7	240
CCSB	5526.5	12931.7	271
DDNA	5526.8	12933.7	365
DDNB	5526.8	12933.7	362
DDMA	5526.8	12933.6	370
DDMB	5526.8	12933.6	374
DDSA	5526.7	12933.6	371
DDSB	5526.7	12933.6	369
EENA	5527.2	12937.1	403
EENB	5527.2	12937.1	400
EMA	5527.1	12937.0	402
EEMB	5527.1	12937.0	401
EESA	5527.0	12937.0	394
EESB	5527.0	12937.0	395
Z2WA	5529.2	12945.9	321
Z2WB	5529.2	12945.9	322
Z2MA	5529.2	12945.6	321
Z2MB	5529.2	12945.6	322
Z2EA	5529.3	13045.4	267
Z2EB	5529.3	13045.4	267

Table 2. Sediment particle size analysis for Alice Arm 1989.

Station	%gravel	%sand	%mud
CCNA	0.00	7.54	92.40
CCNB	0.00	2.12	97.80
CCMA	0.00	1.45	98.50
CCMB	0.00	9.22	90.70
CCSA	0.86	14.20	84.90
CCSB	0.08	32.20	67.60
DDNA	0.15	15.20	84.50
DDNB	0.04	5.39	94.50
DDMA	0.00	18.60	81.30
DDMB	0.38	22.20	77.30
DDSA	0.00	32.40	67.50
DDSB	0.00	34.50	65.40
EENA	0.00	1.99	98.00
EENB	0.00	2.49	97.50
EEMA	0.00	2.57	97.40
EEMB	0.00	2.44	97.50
EESA	0.00	3.29	96.70
EESB	0.00	2.01	97.90
Z2WA	0.00	0.56	99.40
Z2WB	0.00	0.32	99.60
Z2MA	0.25	0.75	99.00
Z2MB	0.00	0.28	99.70
Z2EA	0.00	0.65	99.30
Z2EB	0.00	0.71	99.20

Table 3. Quality Assurance/ quality control resort count from Alice Arm, B.C., October 1989.

Station	No. repicked	Percent of total animals
CCMA	1	1.6
DDMA	3	5.0
Z2WA	1	* 13.0

\*The repick represents only one specimen. The percentage is so high because the total abundance from this sample was so low, yet the amount of debris was great. Therefore it was considered a poor choice for QC and the high value was ignored.

Fig. 1. Map showing general location of study area.

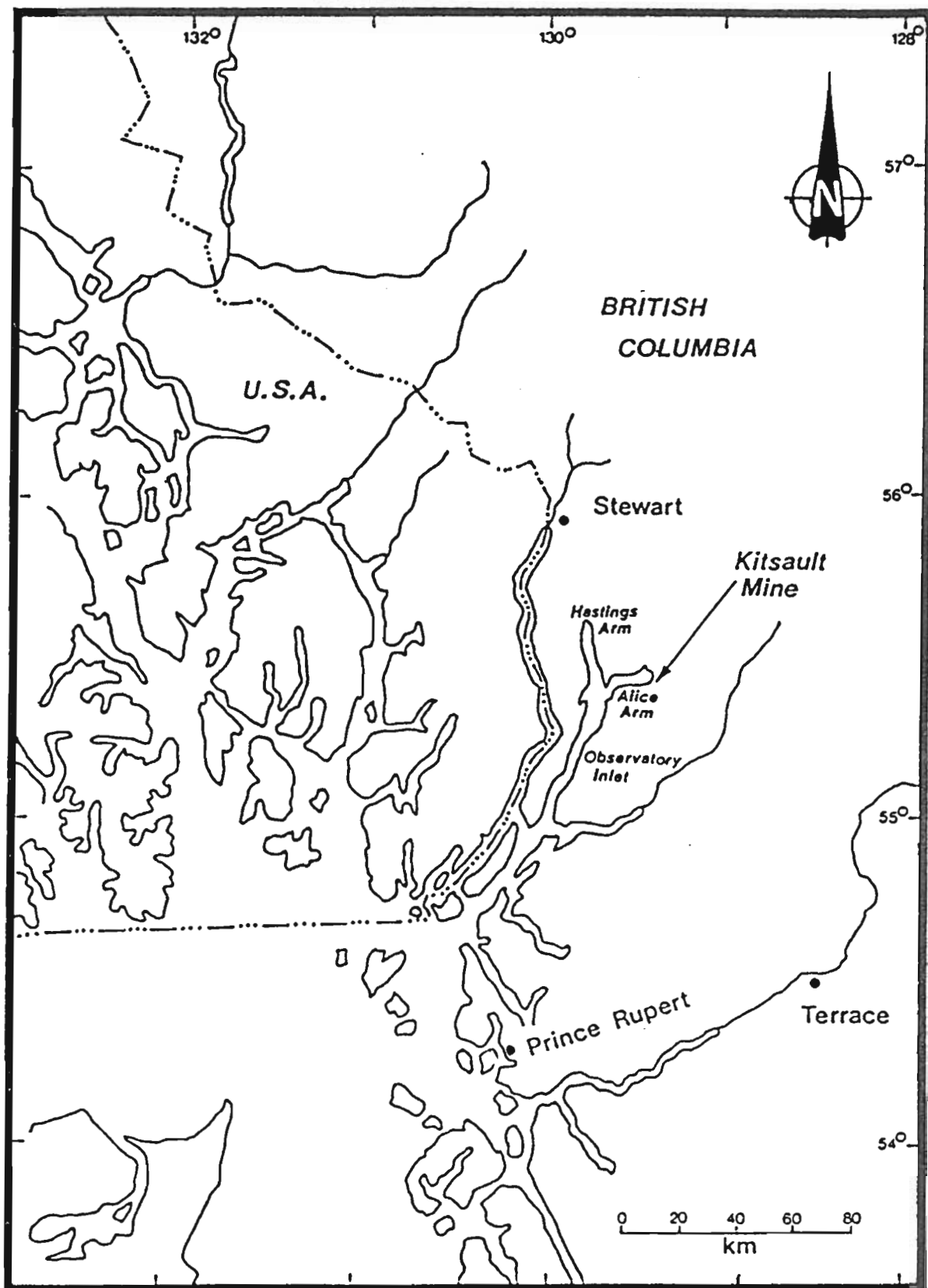
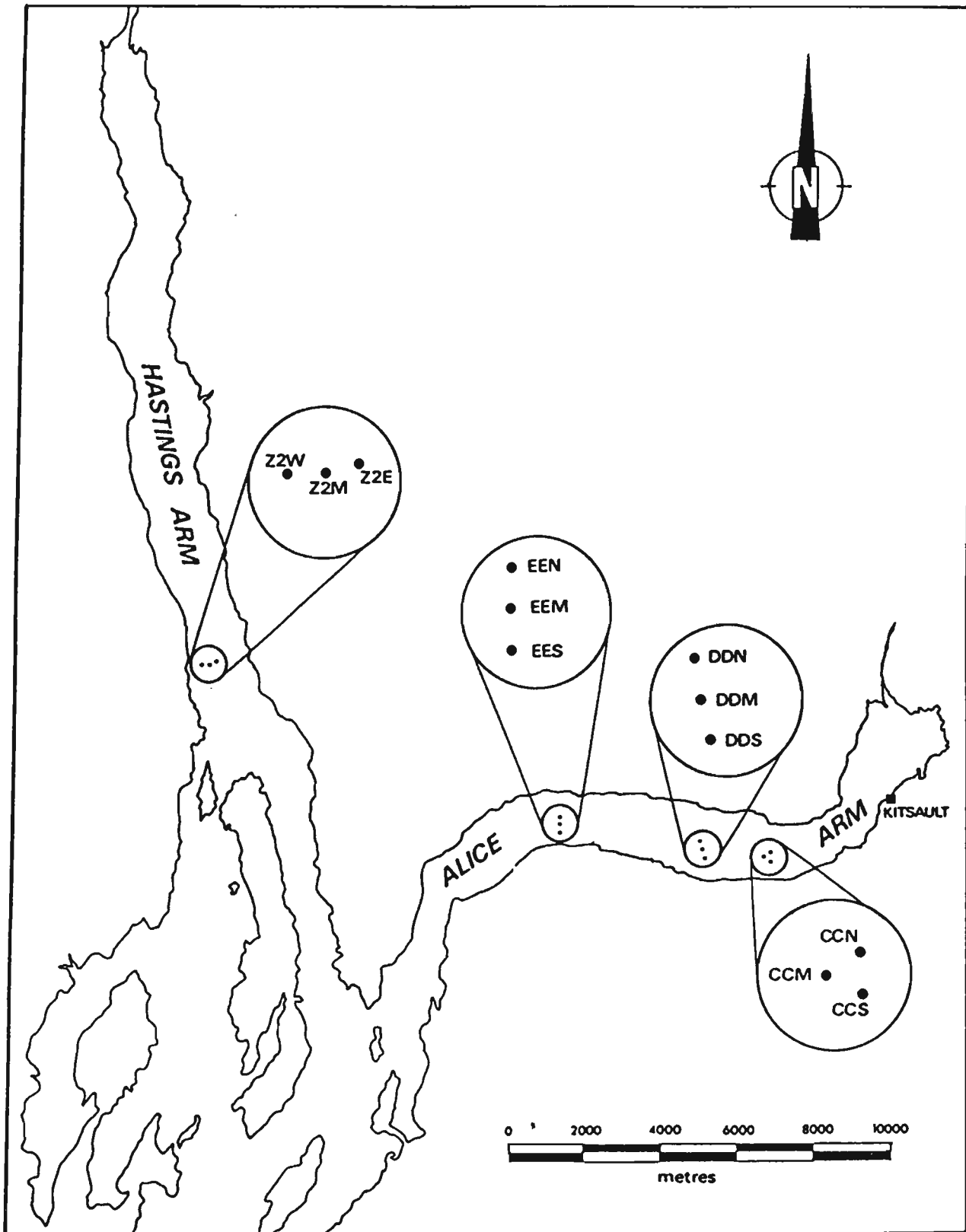


Fig. 2. Station locations in Alice Arm and Hastings Arm, British Columbia.



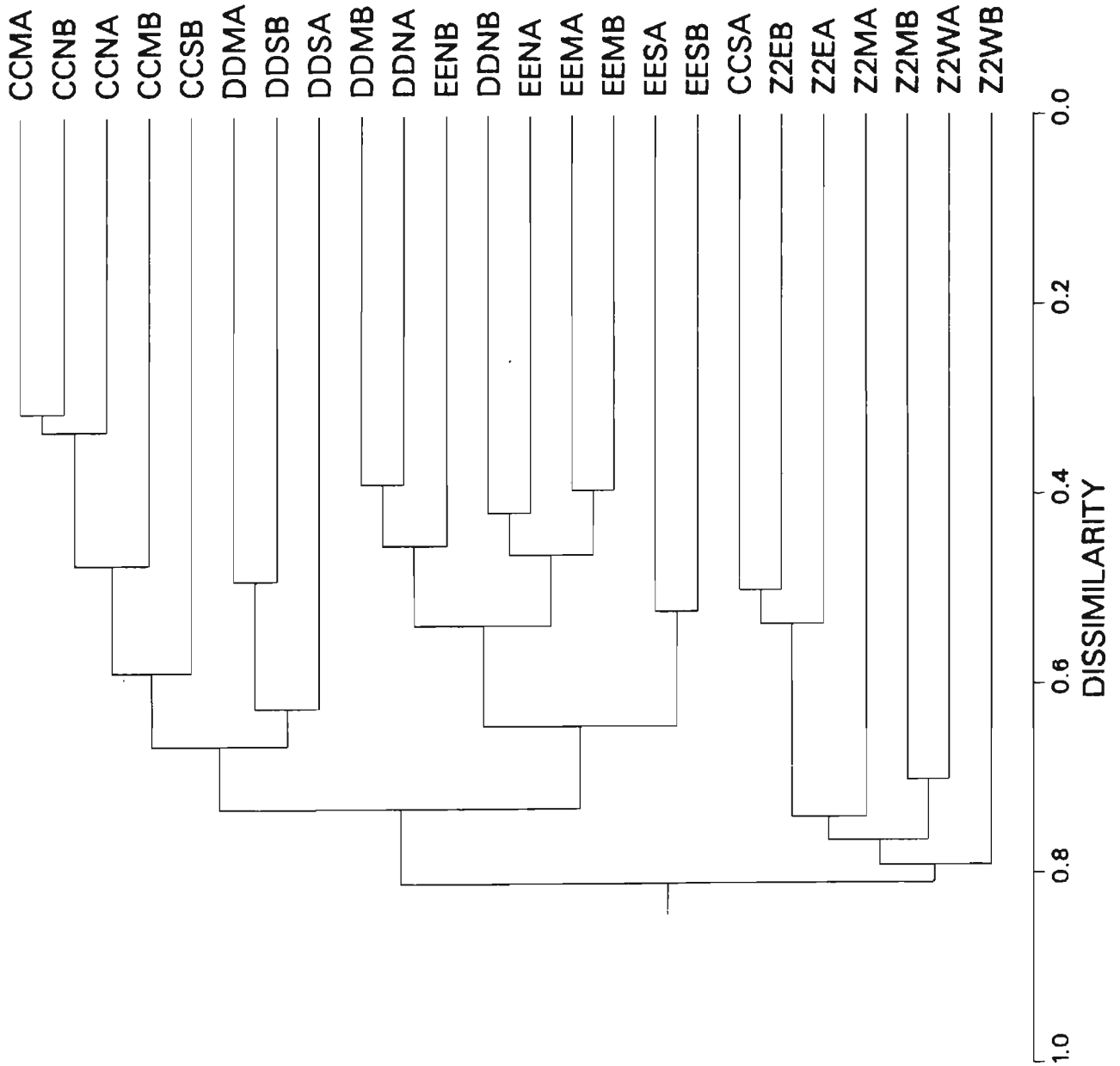


Figure 3. Cluster dendrogram showing groupings of all individual replicates for the Alice Arm 1989 species abundance data. Linkages are based on UPGMA (unweighted pair group mean average sort).

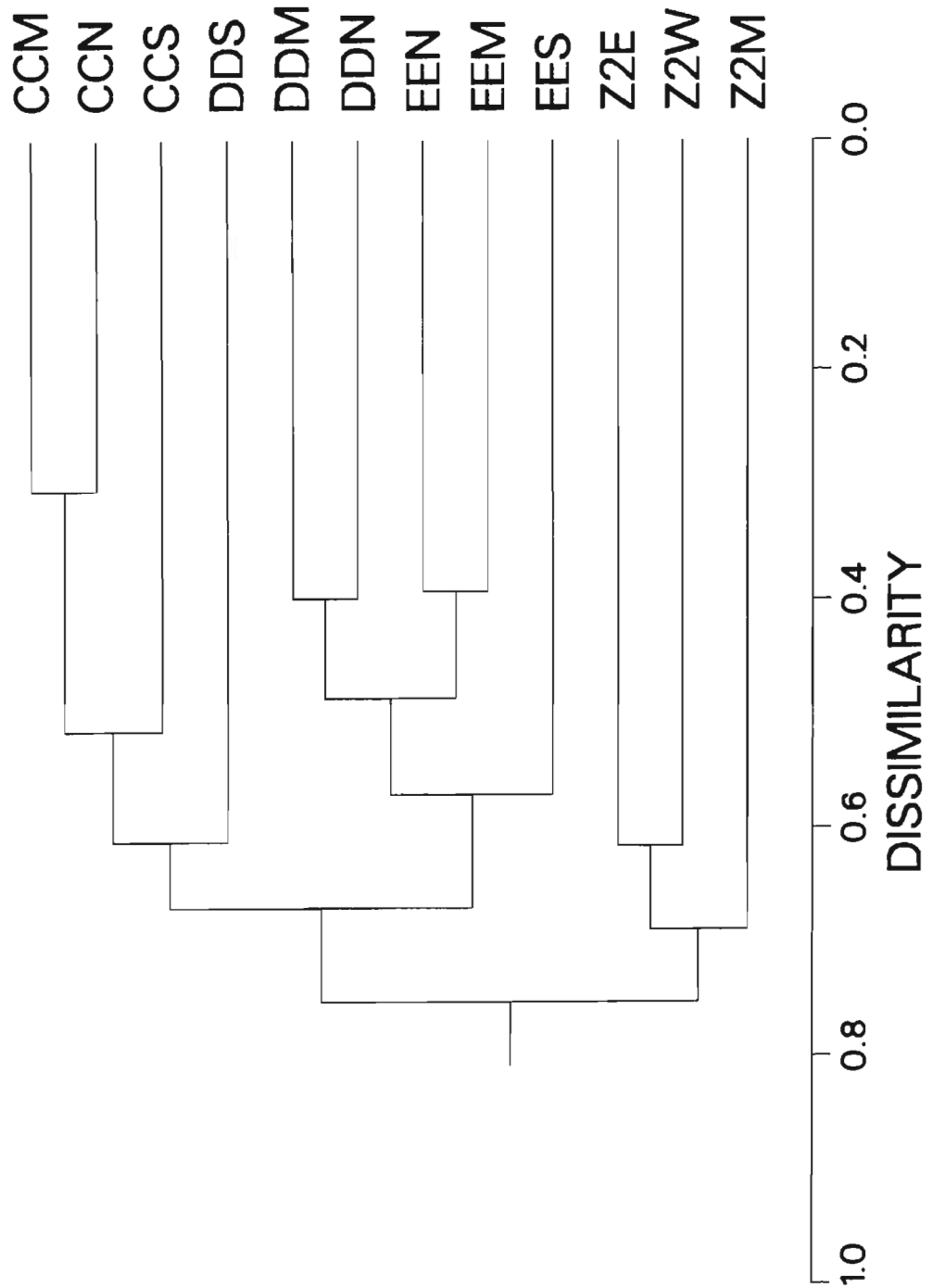


Figure 4. Cluster dendrogram showing groupings of stations (replicates averaged - UPGMA linkage) for the 1989 Alice Arm abundance data. There were no significant linkages at the 5% level.



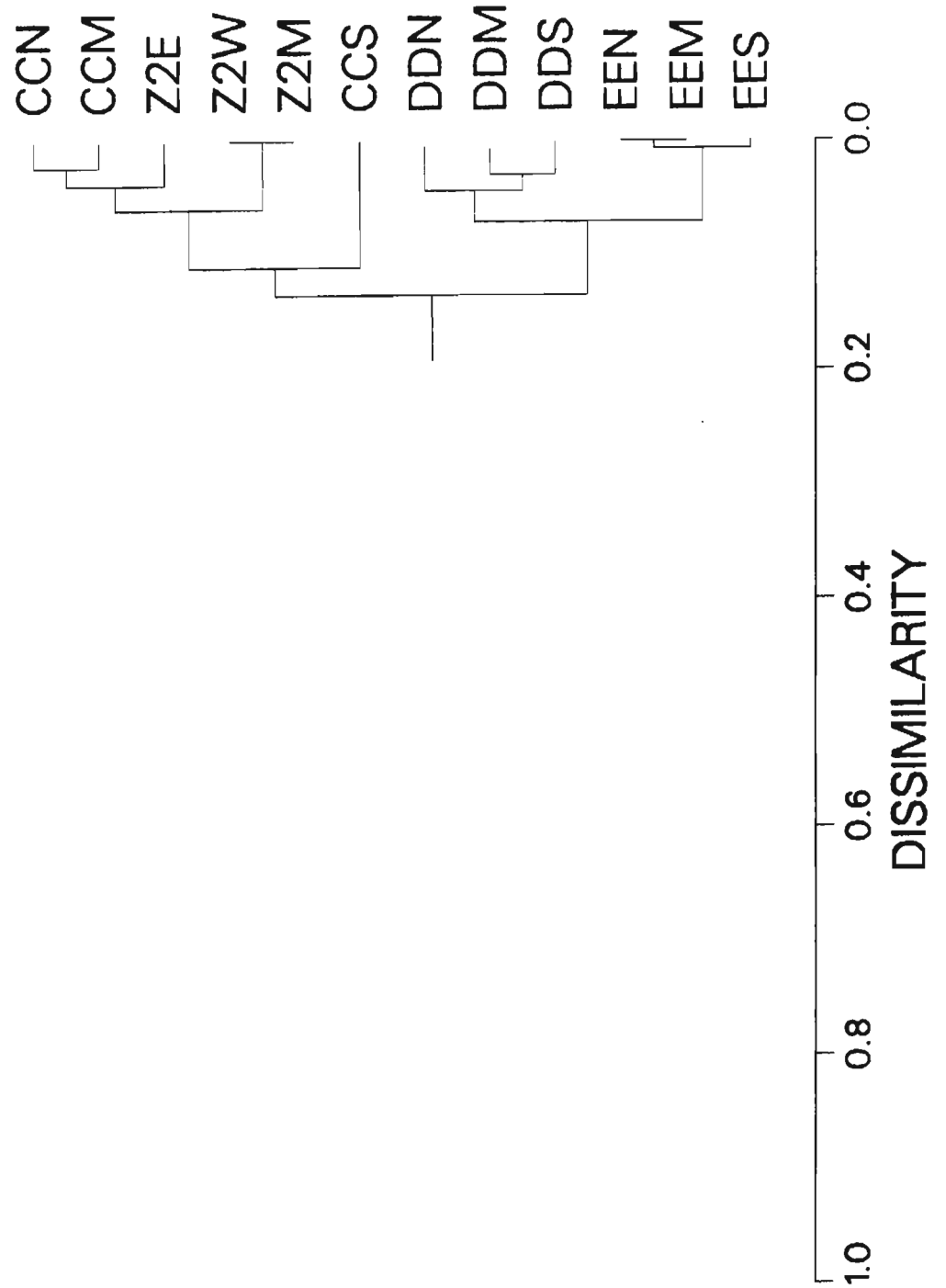


Figure 5. Cluster dendrogram showing groupings of stations (replicates averaged - UPGMA linkage) for the Alice Arm 1989 depth/ sediment particle size data.

Appendix 1. Taxa identified from benthic surveys in Alice Arm in 1982, 1983, and 1986. Brackets denote taxonomic synonyms from Austin (1985). Asterisks denote taxa not included by Austin (1985).

TAXON	SURVEY YEAR			
	1982	1983	1986	1989
PORIFERA				
Hexactinellida				
Rossellidae	x			
CNIDARIA				
Anthozoa				
Pennatulacea		x		
Virgularidae				
Virgularia cf. tuberculata	x		x	
Virgularia cf. cystiferum				x
Edwardsiidae				
Edwardsia sipunculoides		x		
PLATYHELMINTHES				
Turbellaria			x	
Polycladida	x		x	
NEMERTEA				
Nemertea	x		x	
Anopla				
Lineidae				
Cerebratulus sp.	x	x	x	
Micrura alaskensis	x			
Enopla				
Hoplonemertea	x			
NEMATODA				
Nematoda indet.	x			
ANNELIDA				
Oligochaeta				
Tubificidae				
Limnodriloides sp.	x			
L. victoriensis	x			
Polychaeta				
Polynoidae				
Polynoidae indet.			x	x
Antinoella? sarsi*		x		
Eunoe sp.		x		
Harmothoe imbricata				x
Gattyana treadwelli		x		
Sigalionidae				
Pholoe minuta	x	x	x	x
[P. caeca]				

## Appendix 1. Continued

TAXON	1982	1983	1986	1989
Hesionidae				
<i>Gyptis brevipalpa</i>	x	x		x
Trochochaetidae				
<i>Ancistrosyllis</i> sp.		x		
<i>A. groenlandica</i>	x	x	x	x
Phyllodocidae				
<i>Eteone (Mysta)</i> sp.	x			
<i>E. columbiensis</i> *	x			
<i>Phyllodoce groenlandica</i> [ <i>Anaitides groenlandica</i> ]	x			
Nephtyidae				
<i>Nephtys</i> sp.			x	
<i>N. cornuta cornuta</i>	x	x	x	x
<i>N. punctata</i>	x	x	x	x
<i>Aglaophamus</i> sp.			x	x
<i>A. malmgreni</i> *	x	x	x	
Gonianidae				
<i>Glycinde armigera</i>	x		x	x
<i>G. picta</i>				x
<i>Goniada annulata</i>	x	x	x	x
Sphaerodoridae				
<i>Sphaerodoropsis sphaerulifer</i>	x			
Lumbrineridae				
Lumbrineridae indet.			x	
<i>Lumbrineris</i> sp.	x		x	x
<i>L. luti</i>	x	x	x	x
[ <i>L. lutei</i> ]				
<i>Paraninoe simpta</i>	x	x	x	x
Orbiniidae				
<i>Leitoscoloplos pugettensis</i>	x	x	x	x
<i>L. elongatus</i>	x	x		
Paraonidae				
<i>Levisenia gracilis</i> *	x	x	x	x
<i>Aricidea suecica</i>		x	x	
[ <i>Allia nolani</i> ]				
<i>A. nr. cerruti</i> *			x	
<i>Cirrophorus branchiatus</i>	x			
<i>Acesta lopezi</i>	x			x
[ <i>Aricidea lopezi</i> ]				
<i>Acesta catherinae</i>				x
Dorvilleidae				
<i>Schistomeringos</i> sp.	x			
Spionidae				
<i>Polydora</i> sp.		x		
<i>Prionospio</i> sp.	x			
<i>P. cirrifera</i>	x			
<i>P. steenstrupi</i>	x	x	x	x
<i>Spiophanes</i> sp.	x	x	x	
<i>S. kroyeri</i>	x	x	x	x
<i>Pseudopolydora kempii</i> ?	x			

## Appendix 1. Continued

TAXON	1982	1983	1986	
Trochochaeta multisetosa	x			
Chaetopteridae				
Spiochaetopterus costarum	x			
Cirratulidae				
Cirratulidae indet.	x		x	
Caulleriella hamata	x			x
Tharyx multifilis		x	x	x
Chaetozone setosa	x	x	x	
Chaetozone spinosa				x
Cossuridae				
Cossura longocirrata			x	x
C. soyeri	x			
Flabelligeridae				
Brada sp.	x			
Brada sacchalina				x
B. villosa	x	x	x	x
Flabelligera affinis			x	x
Pherusa sp.	x			
P. plumosa			x	x
Syllidae				
Exogone sp.1	x			
E. sp.2	x			
E. gemmifera	x			
[E. naidina]				
Eusyllis cf. blomstrandii	x			
Syllis sp.	x			
S. alternata	x			
Sternaspidae				
Sternaspis scutata	x	x	x	x
Opheliidae				
Ophelina breviata	x			
Capitellidae				
Capitellidae indet.			x	
Capitella capitata	x			x
Heteromastus sp.	x			
H. filobranchus	x	x	x	x
Mediomastus sp.	x			
Mediomastus californiensis				x
Decamastus sp.	x			
Maldanidae				
Maldanidae indet.	x			
Maldane glebifex	x	x	x	
Praxillella gracilis			x	x
Rhodine sp.	x			
Oweniidae				
Owenia fusiformis	x			
Myriochele oculata	x	x		
Galathowenia* nr. oculata			x	x
Pectinariidae				
Pectinaria sp.	x			

## Appendix 1. Continued

TAXON	1982	1983	1986	1989
Amphictene moorei	x	x	x	x
Ampharetidae				
Ampharetidae indet.			x	x
Anobothrus gracilis	x			
Amage anops	x			
Ampharete finmarchica		x	x	x
Amphicteis sp.		x		
A. cf. scaphobranchiata	x			
Sosanopsis cf. hesslei	x			
Terebellidae				
Pollycirrus sp.	x			
Artacama conifera			x	
Pista cristata	x			
Trichobranchidae				
Terebellides sp.	x			
T. stroemi	x	x	x	x
Sabellidae				
Euchone sp.	x			
E. hancocki?			x	
Jasmineira pacifica	x			
MOLLUSCA				
Aplacophora				
Aplacophora indet.	x		x	
Crystallophrissonidae				
Crystallophrisson sp.		x	x	x
Chaetodermatidae				
Chaetoderma sp.		x		
Gastropoda				
Gastropoda indet.			x	
Columbellidae				
Mitrella gouldi			x	
Rissoinidae				
Rissoina newcombei		x		
Vitrinellidae				
Vitrinella sp.	x			
V. columbiana			x	x
Naticidae				
Natica russa			x	
[N. clausa]				
Polinices pallidus				x
Muricidae				
Ocenebra interfossa		x	x	x
Pyramidellidae				
Odostomia tenuisculpta			x	
Turbonilla sp.	x			
Cylichnidae				
Cylichna alba		x	x	
C. attonsa	x	x	x	x
Atyidae				
Haminoea vesicula			x	

## Appendix 1. Continued

TAXON	1982	1983	1986	1989
Limacinidae				
<i>Limacina</i> sp.	x			
Buccinidae				
<i>Buccinum</i> sp.	x			
<i>Buccinum glaciale</i>				x
Gastropteridae				
<i>Gastropteron pacificum</i>	x			
Philinidae				
<i>Philine polaris</i>				x
Bivalvia				
Nuculidae				
<i>Nucula tenuis</i>	x	x	x	x
Nuculanidae				
<i>Nuculana</i> sp.		x		
<i>Nuculana radiata</i>				x
<i>N. hamata</i>			x	
<i>N. hindsii</i> *		x		
<i>N. minuta</i> *	x			
Yoldiidae				
<i>Yoldia amydalea</i>	x		x	x
<i>Y. hyperborea</i>		x	x	x
[Y. hyperboria]				
<i>Y. myalis</i>	x			
<i>Y. scissurata</i>		x		
<i>Y. thraciaeformis</i>		x	x	
<i>Y. beringiana</i>	x			
<i>Y. martyria</i>	x	x	x	x
Mytilidae				
<i>Mytilus edulis</i>			x	
Lucinidae				
<i>Lucina tenuisculpta</i>		x		
Thyasiridae				
<i>Adontorhina cyclia</i>				x
<i>Axinopsida serricata</i>			x	
<i>Thyasira flexuosa</i>			x	x
[T. barbarenaensis]				
Ungulidae				
<i>Diplodonta orbella</i>	x			
Cardiidae				
<i>Clinocardium nuttallii</i>		x		
Pectinidae				
<i>Delectopecten vitreus</i>				x
Tellinidae				
<i>Macoma</i> sp.	x			
<i>M. calcarea</i>		x		
<i>M. eliminata</i>		x		
<i>M. brota</i>			x	x
<i>M. carlottensis</i>	x	x	x	
<i>M. cf. nasuta</i>	x			

## Appendix 1. Continued

TAXON	1982	1983	1986	1989
Transenella tantilla	x			
Psephidia lordi		x	x	x
Cooperellidae				
Cooperella sp.	x			
C. subdiaphana		x	x	
Myidae				
Mya arenaria		x		
Hiatellidae				
Hiatella arctica	x			
Montacutidae				
Nearomya rugifera			x	
Scaphopoda				
Dentallidae				
Dentalium agassizii		x		
D. pretiosum		x	x	x
D. rectius*	x	x	x	x
Cadulidae				
Cadulus californicus	x			
[Polyschides californicus]				
Cadulus aberrans				x
C. tolmiei		x	x	
ARTHROPODA				
Crustacea				
Crustacea indet.			x	
Ostracoda				
Ostracoda indet.		x		
Myodocopa undesc.			x	
Halocyprididae				
Spinoecia spinirostris			x	
Philomdidae				
Scleroconcha trituberculatus			x	
Rutidermatidae				
Rutiderma lomae				x
Copepoda				
Calanidae				
Neocalanus plumchrus			x	
Metridiidae				
Metridia okhotensis			x	
M. pacifica			x	
Mysidacea				
Mysidae				
Holmesiella anomola		x		
Pseudomma truncatum	x			
Cumacea				
Leuconidae				
Leucon sp.	x			
L. subnasica		x		
Eudorella sp.	x			
E. emarginata			x	
E. pacifica		x		x

## Appendix 1. Continued

TAXON	1982	1983	1986	1989
Diastylidae				
<i>Diastylis aspera?</i>			x	
<i>D. pellucida</i>		x		
<i>D. paraspiculosa</i>			x	
[ <i>D. parasinulosa</i> ]				
<i>D. umatillensis</i>				x
Nannastacidae				
<i>Campylaspis? papillata</i>	x			
[ <i>C. rubromacullata</i> ]				
Tanaidacea				
Leptognathiidae				
<i>Leptognathia</i> sp.	x			
<i>Leptognathia gracilis</i>				x
Amphipoda				
Corophiidae				
<i>Corophium acherusicum</i>			x	
Eusiridae				
Eusiridae frag.			x	
<i>Rhacotropis? sp.</i>	x			
Lysianassidae				
<i>Cyphocaris challengerii</i>	x			
<i>Menigratopsis</i> sp.			x	
<i>Koroga megalops</i>	x	x	x	x
<i>Pachynus barnardi</i>	x	x		
<i>Orchomene obtussa</i>	x			x
Oediceritidae				
Oedicerotidae indet.	x		x	
Oediceros sp.			x	
[ <i>Oediceroides</i> sp.]				
<i>Bathymedon</i> sp.			x	
<i>B. pumilis</i>	x	x		x
<i>Monoculodes</i> sp.		x	x	
<i>M. cf. emarginatus</i>	x	x		
<i>M. glyconica</i>				x
Phoxicephalidae				
<i>Foxiphalus obtusidens</i>			x	
<i>Harpiniopsis? sp.</i>			x	
<i>Heterophoxus oculatus</i>			x	x
<i>Paraphoxus oculatus</i>	x		x	
Synopiidae				
<i>Syrrhoe</i> sp.			x	
Hyperiididae				
<i>Hyperia sedusarum</i>	x			
[ <i>H. medusarum</i> ]				
<i>Parathemisto</i> sp.		x		
<i>P. pacificus</i>	x			
Dulichiididae				
<i>Dulichia rhabdoplastis</i>				x
Calliopiidae				
<i>Oradarea longimana</i>				x



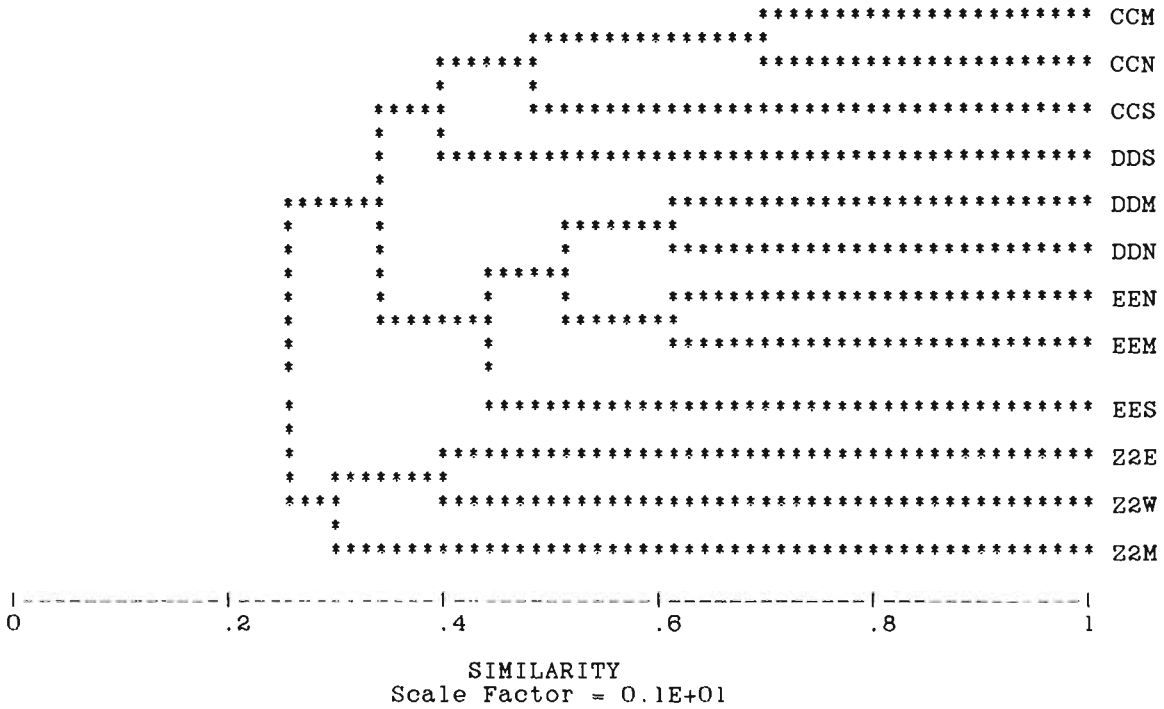
## Appendix 1. Continued

TAXON	1982	1983	1986	1989
Scinidae				
<i>Scina borealis</i>				x
Decapoda				
Decapoda indet.	x			
Pinnotheridae				
<i>Pinnixa</i> cf. <i>eburna</i>			x	
Pasiphaeidae				
<i>Pasiphaea pacifica</i>			x	
SIPUNCULA				
Sipuncula indet.			x	
Golfingiidae				
<i>Golfingia</i> sp.			x	
ECHIURA				
Echiura indet.	x		x	
BRYOZOA				
Bryozoa indet.		x		
ECHINODERMATA				
Ophiuroidea			x	
Ophiuridae				
<i>Ophiura</i> sp.	x		x	x
<i>O. sarsi</i>	x			x
<i>O. leptoctenia</i>	x	x	x	x
Amphiuridae				
Amphiuridae indet.			x	
<i>Amphioplus strongyloplax</i>			x	
Echinoidea				
Strongylocentrotidae				
<i>Strongylocentrotus</i> sp. juv.				x
<i>Strongylocentrotus pallidus</i>			x	
Holothuroidea				
Holothuroidea indet.			x	
Chirodotidae				
<i>Chirodota albatrossi</i>	x	x	x	x
Molpadiidae				
<i>Molpadia intermedia</i>	x	x	x	x
Asteroidea				
<i>Ctenodiscus crispatus</i>				x
TOTAL TAXA	<u>123</u>	<u>74</u>	<u>110</u>	<u>79</u>



TAXA	CCMA	CCMB	CCBA	CCWB	CCSA	CCSB	DDMA	DDMB	DDNA	DDNB	DDSA	DDSB	KEWA	KEWB	KEMA	KEMB	KEWA	KEWB	Z2EA	Z2EB	Z2MA	Z2MB	Z2WA	Z2WB
<b>*ASTROPODA</b>																								
Buccinum glaciale	0	0	0	0	0	0	0	0	0	0	0	0	0	1	0	0	0	0	0	0	0	0	0	0
Cylichna attonsa	10	1	8	7	1	2	3	3	3	2	7	1	0	1	2	1	4	4	0	0	1	0	0	0
Ocenebra interfossa	0	0	0	0	0	0	0	0	0	0	0	0	0	0	0	0	1	0	0	0	0	0	0	0
Philine polaris	0	0	0	0	0	0	0	0	0	0	0	0	3	0	0	0	0	0	0	0	0	0	0	0
Polinices pallidus	0	0	0	0	1	0	0	0	0	0	3	0	0	0	0	0	0	0	0	0	0	0	0	0
Vitrinella columbiana	0	0	0	0	0	0	0	0	0	0	0	0	0	0	0	0	1	0	0	0	0	0	0	0
<b>SCAPHOPODA</b>																								
Cadulus aberrans	0	0	0	0	0	0	0	0	0	0	0	0	0	0	0	0	0	0	0	0	1	0	0	0
Dentalium pretiosum	0	0	0	0	0	0	1	0	1	0	0	0	0	0	0	0	0	0	1	0	0	0	0	0
Rhabdus rectius	0	0	0	0	0	0	0	1	1	0	1	0	0	2	2	1	0	0	0	0	0	1	1	0
<b>APLACOPHORA</b>																								
Crystallophrisson sp. A.	3	0	5	2	2	0	0	0	0	2	3	2	0	4	0	3	0	1	0	1	0	0	1	1
Crystallophrisson sp. B	0	3	0	0	0	0	0	0	0	0	0	0	0	0	0	0	0	0	0	0	0	0	0	0
<b>AMPHIPODA</b>																								
Bathymedon ?pumilus	1	0	1	0	0	0	0	0	0	0	0	0	0	0	0	0	0	0	0	0	0	0	0	0
Dulichia rhabdoplastis	0	0	0	0	0	0	0	0	0	2	0	0	0	0	0	0	0	0	0	0	0	0	0	0
Heterophoxus oculatus	0	0	1	0	0	2	0	0	0	0	0	0	0	0	0	0	0	0	0	0	0	0	0	0
Koroga megalops	2	1	0	2	0	0	1	1	1	1	0	1	0	0	0	0	1	0	0	0	0	0	0	0
Monoculodes cf. glyconica	0	0	0	0	0	0	1	0	0	0	1	2	1	0	0	0	0	0	0	0	0	0	0	0
?Oradarea longimana	0	0	0	0	0	0	0	0	1	0	0	0	0	0	0	0	0	0	0	0	0	0	0	0
Orchomene obtusa	1	0	0	0	0	0	0	0	0	0	0	0	0	0	0	0	0	0	0	0	0	0	0	0
Scina borealis	0	0	0	0	0	0	0	0	0	0	0	0	0	0	0	0	0	1	0	0	0	0	0	0
<b>DECAPODA</b>																								
Pasiphaea pacifica	1	0	0	0	0	0	1	0	0	0	0	0	0	0	0	0	0	0	0	0	0	0	0	0
<b>OSTRACODA</b>																								
Rutiderna lomae	0	1	0	0	0	0	0	0	0	0	0	0	0	0	0	0	0	0	0	0	0	0	0	0
<b>CYPRACRA</b>																								
Indorella pacifica	5	1	1	0	2	2	1	0	1	0	2	2	0	0	0	0	1	1	0	0	6	0	1	0
Diastylus umatillensis	0	0	0	0	0	1	0	0	0	0	0	0	0	0	0	0	0	0	0	0	0	0	0	0
<b>TANAIDACRA</b>																								
Leptognathia gracilis	0	1	0	0	0	0	0	0	0	0	0	0	0	0	0	0	0	0	0	0	0	0	0	0
<b>HOLOTHUROIDEA</b>																								
Chiridota albatrossi	3	4	1	2	0	3	1	1	2	1	1	4	2	2	5	2	5	7	0	0	1	1	0	2
Ctenodiscus crispatus	2	2	2	4	0	3	2	2	2	4	0	0	2	1	1	0	1	0	1	0	0	0	0	1
<b>ECHINOIDEA</b>																								
Strongylocentrotus sp. juv.	0	0	0	0	0	0	0	0	0	0	0	0	1	0	0	0	0	0	0	0	0	0	0	0
<b>ASTEROIDEA</b>																								
Molpadia intermedia	6	8	6	12	0	6	1	2	5	4	2	0	0	1	1	0	0	1	0	1	2	2	1	0
<b>OPHIUROIDEA</b>																								
Ophiura sarsi	7	3	5	5	0	10	1	0	1	0	2	0	0	0	0	0	0	0	0	0	0	0	0	0
Ophiura leptoctenia	0	0	1	2	0	0	0	1	0	0	0	0	0	0	1	0	0	0	0	0	0	0	0	0
Ophiura sp. juv.	0	2	0	0	0	1	0	1	0	0	2	0	0	0	0	0	0	0	0	0	0	0	0	0
<b>ANTHOZOA</b>																								
Virgularia cystiferum	0	0	0	0	0	0	0	0	0	0	0	0	0	0	0	0	0	0	6	0	0	0	1	1

Appendix 3. Sigtree results for cluster analysis of Alice Arm (1989) stations based on species abundance data.



Linkage	Clusters	Linked	Similarity	Prob
1	CCM	CCN	0.69528	0.20800
2	EEN	EEM	0.60714	0.31400
3	DDM	DDN	0.60086	0.25800
4	DDM	EEN	0.51373	0.25600
5	CCM	CCS	0.48526	0.26600
6	DDM	EES	0.42952	0.12600
7	Z2E	Z2W	0.40000	0.32800
8	CCM	DDS	0.38862	0.16000
9	CCM	DDM	0.33029	0.09000
10	Z2E	Z2M	0.29631	0.21000
11	CCM	Z2E	0.24322	0.09800

Appendix 4. COMTREL analysis results for comparison of Alice Arm species abundance dendrogram (tree 1) versus Alice Arm depths/ sediment particle size dendrogram (tree 2).

COMTREL: Comparison of Two Dendrograms

Number of objects clustered = 12

TREE 1 read from: alic89.cml

TREE 2 read from: aa89env.cml

Linkage (i)	TREE 1 Linkages		TREE 2 Linkages	
	A(i)	B(i)	A(i)	B(i)
1	CCM	CCN	Z2E	Z2M
2	EEN	EEM	EEN	EEM
3	DDM	DDN	EEN	EES
4	DDM	EEN	CCM	CCN
5	CCM	CCS	DDN	DDS
6	DDM	EES	CCM	Z2W
7	Z2E	Z2W	DDM	DDN
8	CCM	DDS	CCM	Z2E
9	CCM	DDM	DDM	EEN
10	Z2E	Z2M	CCM	CCS
11	CCM	Z2E	CCM	DDM

Fowlkes Mallows Statistic

L1	L2	FM(L1.L2)	PROB	M1	S1	M2	S2
1	1	0.000000	1.0000	0.015152	0.122155	0.015152	0.122155
2	2	0.500000	0.0364	0.018182	0.093597	0.030303	0.120706
3	3	0.288675	0.6444	0.290571	0.085059	0.052486	0.115788
4	4	0.338062	1.0000	0.431833	0.081579	0.089638	0.112507
5	5	0.272166	0.8214	0.291595	0.054609	0.111340	0.107541
6	6	0.392232	0.0952	0.238175	0.063298	0.154516	0.099328
7	7	0.422577	0.5333	0.419855	0.062719	0.179275	0.097607
8	8	0.363803	0.7000	0.405787	0.086268	0.249885	0.093009
9	9	0.558957	0.6667	0.570982	0.067113	0.460815	0.060706
10	10	0.613941	0.6667	0.607206	0.010612	0.518262	0.045103
11	11	1.000000	1.0000	1.000000	0.000000	1.000000	0.000000

PROB = probability given the clusters defined at level L1 1

M1 = mean given the clusters at level L1-1

S1 = standard deviation given the clusters at level L1 1

M2 = mean given the cluster sizes

S2 = standard deviation given the cluster sizes