

Summary data for species that occur, or potentially occur, in the Southampton Island Ecologically and Biologically Significant Area

Tracy N. Loewen, Claire A. Hornby, and Eliza Hydesmith

Fisheries and Oceans Canada
Freshwater Institute
501 University Crescent
Winnipeg, MB R3T 2N6

2020

Canadian Data Report of Fisheries and Aquatic Sciences 1308



Fisheries and Oceans
Canada

Pêches et Océans
Canada

Canada

Canadian Data Report of Fisheries and Aquatic Sciences

Data reports provide a medium for filing and archiving data compilations where little or no analysis is included. Such compilations commonly will have been prepared in support of other journal publications or reports. The subject matter of the series reflects the broad interests and policies of Fisheries and Oceans Canada, namely, fisheries management, technology and development, ocean sciences, and aquatic environments relevant to Canada.

Data reports are not intended for general distribution and the contents must not be referred to in other publications without prior written clearance from the issuing establishment. The correct citation appears above the abstract of each report. Each report is abstracted in the data base Aquatic Sciences and Fisheries Abstracts.

Data reports are produced regionally but are numbered nationally. Requests for individual reports will be filled by the issuing establishment listed on the front cover and title page.

Numbers 1-25 in this series were issued as Fisheries and Marine Service Data Records. Numbers 26-160 were issued as Department of Fisheries and Environment, Fisheries and Marine Service Data Reports. The current series name was changed with report number 161.

Rapport technique canadien des sciences halieutiques et aquatiques

Les rapports statistiques servent de base à la compilation des données de classement et d'archives pour lesquelles il y a peu ou point d'analyse. Cette compilation aura d'ordinaire été préparée pour appuyer d'autres publications ou rapports. Les sujets des rapports statistiques reflètent la vaste gamme des intérêts et politiques de Pêches et Océans Canada, notamment la gestion des pêches, la technologie et le développement, les sciences océaniques et l'environnement aquatique, au Canada.

Les rapports statistiques ne sont pas préparés pour une vaste distribution et leur contenu ne doit pas être mentionné dans une publication sans autorisation écrite préalable de l'établissement auteur. Le titre exact figure au haut du résumé de chaque rapport. Les rapports à l'industrie sont résumés dans la base de données Résumés des sciences aquatiques et halieutiques.

Les rapports statistiques sont produits à l'échelon régional, mais numérotés à l'échelon national. Les demandes de rapports seront satisfaites par l'établissement d'origine dont le nom figure sur la couverture et la page du titre.

Les numéros 1 à 25 de cette série ont été publiés à titre de Records statistiques, Service des pêches et de la mer. Les numéros 26-160 ont été publiés à titre de Rapports statistiques du Service des pêches et de la mer, ministère des Pêches et de l'Environnement. Le nom de la série a été modifié à partir du numéro 161.

Canadian Data Report
of Fisheries and Aquatic Sciences 1308

2020

SUMMARY DATA FOR SPECIES THAT OCCUR, OR POTENTIALLY OCCUR, IN THE
SOUTHAMPTON ISLAND ECOLOGICALLY AND BIOLOGICALLY SIGNIFICANT
AREA

by

Tracy N. Loewen, Claire A. Hornby, and Eliza Hydesmith

Fisheries and Oceans Canada
Freshwater Institute
501 University Crescent
Winnipeg, MB R3T 2N6

© Her Majesty the Queen in Right of Canada, 2020.
Cat. No. Fs97-13/1308E-PDF ISBN: 978-0-660-35375-3 ISSN 1488-5395

Correct citation for this publication:

Loewen, T.N., Hornby, C.A., and Hydesmith, E. 2020. Summary data for species that occur, or potentially occur, in the Southampton Island Ecologically and Biologically Significant Area. Can. Data Rep. Fish. Aquat. Sci. 1308: vii + 75 p.

TABLE OF CONTENTS

ABSTRACT	vi
RÉSUMÉ	vii
INTRODUCTION.....	1
MATERIALS AND METHODS	2
REFERENCES.....	73

LIST OF TABLES

Table 1. Phytoplankton, ice algae, and benthic macroalgae taxa.	2
Table 2. Zooplankton and ice fauna taxa.	19
Table 3. Benthic and epibenthic macroinvertebrate taxa.....	22
Table 4. Fish species that occur or may occur in the SI EBSA based on science and traditional knowledge.....	38
Table 5. Bird species reported in and near SI EBSA.....	70

LIST OF FIGURES

Figure 1. Fish species distribution for family Agonidae.	49
Figure 2. Fish species distribution for family Cottidae.	50
Figure 3. Fish species distribution for family Clupeidae and Anarhichadidae.....	51
Figure 4. Fish species distribution for family Cyclopteridae.....	52
Figure 5. Fish species distribution for family Gadidae.	53
Figure 6. Fish species distribution for family Liparidae.....	54
Figure 7. Fish species distribution for family Macrouridae and Acipenseridae.	55
Figure 8. Fish species distribution for family Macrostomatidae and Ammodytidae.	56
Figure 9. Fish species distribution for family Myctophidae, Moridae, Etmopteridae, Chimaeridae.....	57
Figure 10. Fish species distribution for family Paralepididae and Osmeridae.	58
Figure 11. Fish species distribution for family Phycidae.....	59
Figure 12. Fish species distribution for family Pleuronectidae.....	60
Figure 13. Fish species distribution for family Psychrolutidae, Myxinidae and Gasterosteidae.....	61
Figure 14. Fish species distribution for family Rajidae.	62
Figure 15. Fish species distribution for family Salmonidae.....	63
Figure 16. Fish species distribution for family Scorpaenidae.	64
Figure 17. Fish species distribution for family Serrivomeridae and Pholidae.	65
Figure 18. Fish species distribution for family Somniosidae.....	66
Figure 19. Fish species distribution for family Stichaeidae.....	67
Figure 20. Fish species distribution for family Stomiidae.....	68
Figure 21. Fish species distribution for family Zoarcidae.....	69

ABSTRACT

Loewen, T.N., Hornby, C.A., and Hydesmith, E. 2020. Summary data for species that occur, or potentially occur, in the Southampton Island Ecologically and Biologically Significant Area. *Can. Data Rep. Fish. Aquat. Sci.* 1308: vii + 75 p.

As part of the scientific review of the Southampton Island Ecologically and Biologically Significant Area (SI EBSA), a series of species-specific data found within the EBSA was compiled based on prior research in the area. For improved access to this valuable information, this data has been summarized and the contents are found within this report. Taxa and aquatic species lists that occur, or potentially occur, within the SI EBSA are shown in tables and figures, and are based on an extensive literature review summarized in Loewen et al. 2020. The SI EBSA was reviewed by scientific and local experts at a Canadian Science Advisory Secretariat (CSAS) in December 2018, and all associated publications (Research Document, Proceedings and Science Advisory Report) are being used to support the identification by Regional Inuit Associations in Nunavut and other stakeholders of a potential Area of Interest (AOI) to become a Marine Protected Area.

RÉSUMÉ

Loewen, T.N., Hornby, C.A., and Hydesmith, E. 2020. Summary data for species that occur, or potentially occur, in the Southampton Island Ecologically and Biologically Significant Area. Can. Data Rep. Fish. Aquat. Sci. 1308: vii + 75 p.

Dans le cadre d'un examen scientifique de la zone d'importance écologique et biologique (ZIEB) de l'île Southampton, une série de données propres aux espèces présentes dans la ZIEB ont été compilées avant la recherche dans la zone. Pour accroître l'accès à ces renseignements précieux, les données ont été résumées et incluses dans le présent rapport. Les listes de taxons et d'espèces aquatiques qui sont présentes ou qui pourraient être présentes dans la ZIEB de l'île Southampton sont indiquées dans les tableaux et figures. Ces listes sont fondées sur un examen approfondi des documents résumés dans Loewen et al. (2020). Des scientifiques et des experts locaux ont examiné la ZIEB de l'île Southampton à l'occasion d'une réunion du Secrétariat canadien de consultation scientifique (SCCS) en décembre 2018, et toutes les publications connexes (documents de recherche, compte rendu et avis scientifique) appuient le travail par les associations régionales inuites du Nunavut et d'autres intervenants en vue de la désignation potentielle du site d'intérêt comme zone de protection marine.

INTRODUCTION

Fisheries and Oceans Canada (DFO) is working to develop a network of Marine Protected Areas (MPAs) to conserve and protect marine resources in Canada. The Government of Canada has committed to protect 10% of Canada's coastal and marine areas, through the signing of Aichi Target 11. DFO is working under the authority of the *Oceans Act* (1996) and with Indigenous partners to create a network of MPAs. In Nunavut, the marine waters adjacent to the Southampton Island Ecologically and Biologically Significant Area (SI EBSA) have been identified by Regional Inuit Associations along with other stakeholders, as a potential Area of Interest (AOI) for a Marine Protected Area.

The SI EBSA is located in southern Foxe Basin, west of Hudson Strait (see Figure 1, Loewen et al. 2020). The area was identified as an EBSA in 2011, based on high use by marine mammals and seabirds (DFO 2011). In 2013, the SI EBSA was also identified by the International Maritime Organization as meeting several criteria for a Particularly Sensitive Sea Area (or PSSA) designation (AMAP et al. 2013). During the spring and fall the SI EBSA provides valuable migratory and calving habitat for Bowhead (*Balaena mysticetus*), Beluga (*Delphinapterus leucas*), and Narwhal (*Monodon monoceros*), as well as year round denning areas for Polar Bear (*Ursus maritimus*) and haul out sites for Walrus (*Odobenus rosmarus*) (Cobb 2011). The recurring polynya in Roes Welcome Sound provides approximately 52 km² of open water during winter and is believed to play an important role in deep water formation and nutrient cycling in Hudson Bay, and this open water area may support high benthic productivity. During the ice-free season, Roes Welcome Sound is a migration corridor for marine mammals and seabirds, and in the winter, the polynya also provides valuable habitat for Walruses, Bearded Seals (*Erignathus barbatus*), and small numbers of Belugas (*Delphinapterus leucas*) (Loewen et al. 2020).

Significant colonies of sea birds are found within the SI EBSA, notably the largest single colony of Common Eiders (*Somateria mollissima*) in Nunavut. Several seabird species use this region along their migratory routes on a seasonal basis and the two migratory bird sanctuaries, which extend into the SI EBSA marine environment, support large numbers of nesting sea birds during spring and summer. Arctic Cod (*Boreogadus saida*) is important prey for these large seabird colonies and is most abundant in nearshore areas off Southampton and Coats islands (Nunavut 2012, 2014), coastal areas of southern Southampton Island, and small islands in Fisher and Evans straits. Arctic Char (*Salvelinus alpinus*) is the most abundant salmonid available for subsistence harvesting and is a food source to many communities within and outside the EBSA.

The key objectives of the Southampton Ecosystem Overview Report (Loewen et al. 2020) was to 1) summarize existing and new scientific information and Inuit Qaujimagatuqangit (IQ) relevant to the SI EBSA, and 2) identify ecological importance of the region, to help inform the conservation objectives in the development process of the MPA. Within this literature review all species that occur within the SI EBSA were also reported and have now been summarized here.

MATERIALS AND METHODS

To support the assessment of the AOI (Loewen et al. 2020), this document contains listings of taxa of phytoplankton, ice algae and macroalgae, zooplankton and ice fauna, benthic and epibenthic macroinvertebrates, fish, and bird species found with the Southampton Island EBSA. It also contains maps of fish distributions by family, and bird species reported near the SI EBSA.

LOWER TROPHIC LEVELS

Phytoplankton

Table 1 provides a list of all 484 phytoplankton, ice algae, and macrophyte taxa collected within the region by Bursa (1961a, 1961b), Legendre and Simard (1979), Lee (1980), Anderson et al. (1981), Roff and Legendre (1986), and Harvey et al. (1997), and represents a minimum level of diversity for the SI EBSA.

Table 1. Phytoplankton, ice algae, and benthic macroalgae taxa.

Kingdom	Class	Genus/Species	Location ¹	Source
Protozoa	Euglenoidea	<i>Eutreptiella</i> sp.	SFC	Harvey et al. 1997
Protozoa	Kinetoplastea	<i>Bodo</i> sp.	HB, HS	Bursa 1961a
Protozoa	Spirotrichea	<i>Tintinnida</i> sp.	HB	Legendre and Simard 1979
Eubacteria	Cyanophyceae	<i>Anabaena</i> sp.	HB, HS	Bursa 1961a
Eubacteria	Cyanophyceae	<i>Aphanizomenon flosquae</i>	HB, HS	Bursa 1961a
Eubacteria	Cyanophyceae	<i>Merismopedia tenuissima</i>	SI	Roff and Legendre 1986
Eubacteria	Cyanophyceae	<i>Stigonema</i> sp.	SI	Roff and Legendre 1986
Chromista	Bacillariophyceae	<i>Achnantes taeniata</i>	HB, HS, FB	Bursa 1961a, b
Chromista	Bacillariophyceae	<i>Achnanthes groenlandica</i>	HB	Legendre and Simard 1979
Chromista	Bacillariophyceae	<i>Achnantes</i> sp.	HB	Anderson et al. 1981
Chromista	Bacillariophyceae	<i>Actinocyclus ehrenbergii</i>	SI	Roff and Legendre 1986
Chromista	Bacillariophyceae	<i>Amphipeura</i> spp.	HB	Legendre and Simard 1979
Chromista	Bacillariophyceae	<i>Amphiprora hyperborea</i>	HB, HS, FB	Bursa 1961a, b
Chromista	Bacillariophyceae	<i>Amphora</i> spp.	HB	Legendre and Simard 1979
Chromista	Bacillariophyceae	<i>Amophora ostrearia</i>	SI	Roff and Legendre 1986

Kingdom	Class	Genus/Species	Location ¹	Source
Chromista	Bacillariophyceae	<i>Amophora ostrearia</i> var. <i>quadrata</i>	SI	Roff and Legendre 1986
Chromista	Bacillariophyceae	<i>Amorphora proteus</i>	SI	Roff and Legendre 1986
Chromista	Bacillariophyceae	<i>Arcocellulus cornucervis</i>	SFC	Harvey et al. 1997
Chromista	Bacillariophyceae	<i>Asterionella formosa</i>	HB	Anderson et al. 1981
Chromista	Bacillariophyceae	<i>Asterionella gracillima</i>	HB, HS	Bursa 1961a
Chromista	Bacillariophyceae	<i>Asterionella japonica</i>	HB	Anderson et al. 1981
Chromista	Bacillariophyceae	<i>Asterionella kariana</i>	HB, HS	Bursa 1961a
Chromista	Bacillariophyceae	<i>Asterolampra</i> sp.	HB, HS	Bursa 1961a
Chromista	Bacillariophyceae	<i>Attheya septentrionalis</i>	SFC	Harvey et al. 1997
Chromista	Bacillariophyceae	<i>Caloneis bacillum</i>	HB	Anderson et al. 1981
Chromista	Bacillariophyceae	<i>Cocconeis placentula</i>	HB, HS, FB	Bursa 1961a, b
Chromista	Bacillariophyceae	<i>Cocconeis</i> sp.	HB, FB	Bursa 1961b; Anderson et al. 1981
Chromista	Bacillariophyceae	<i>Cylindrotheca closterium</i>	SFC, HB	Harvey et al. 1997; Anderson et al. 1981
Chromista	Bacillariophyceae	<i>Cymatopleura solea</i>	HB	Legendre and Simard 1979
Chromista	Bacillariophyceae	<i>Cymbella ventricosa</i>	SI	Roff and Legendre 1986
Chromista	Bacillariophyceae	<i>Cymbella ventricosa</i> var. <i>Auerswaldii</i> .	SI	Roff and Legendre 1986
Chromista	Bacillariophyceae	<i>Diatoma vulgare</i>	SI	Roff and Legendre 1986
Chromista	Bacillariophyceae	<i>Diatoma vulgare</i> var. <i>ehrenbergii</i>	SI	Roff and Legendre 1986
Chromista	Bacillariophyceae	<i>Diploneis</i> spp.	HB	Legendre and Simard 1979
Chromista	Bacillariophyceae	<i>Eunotia</i> spp.	HB	Legendre and Simard 1979
Chromista	Bacillariophyceae	<i>Eunotogramma debile</i>	SI	Roff and Legendre 1986
Chromista	Bacillariophyceae	<i>Fragllaria capucina</i>	HB	Anderson et al. 1981
Chromista	Bacillariophyceae	<i>Fragilaria crotonensis</i>	HB, HS	Bursa 1961a; Anderson et al. 1981
Chromista	Bacillariophyceae	<i>Fragilaria cylindricus</i>	HB, HS, FB	Bursa 1961a, b
Chromista	Bacillariophyceae	<i>Fragllaria islandica</i>	HB, HS, FB	Bursa 1961a, b
Chromista	Bacillariophyceae	<i>Fragillaria nana</i>	HB, HS	Bursa 1961a
Chromista	Bacillariophyceae	<i>Fragilaria oceanica</i>	HB, HS	Bursa 1961a
Chromista	Bacillariophyceae	<i>Fragilaria striatula</i>	HB, HS	Bursa 1961a

Kingdom	Class	Genus/Species	Location ¹	Source
Chromista	Bacillariophyceae	<i>Fragilaria</i> sp.	SFC	Harvey et al. 1997; Legendre and Simard 1979
Chromista	Bacillariophyceae	<i>Fragilariopsis pseudonana</i>	SFC	Harvey et al. 1997
Chromista	Bacillariophyceae	<i>Gomphonema acuminatum</i>	HB, HS	Bursa 1961a
Chromista	Bacillariophyceae	<i>Gomphonema exiguum</i>	SI	Roff and Legendre 1986
Chromista	Bacillariophyceae	<i>Gomphonema olivaceum</i>	SI	Roff and Legendre 1986
Chromista	Bacillariophyceae	<i>Grammatophora marina</i>	HB, HS	Bursa 1961a
Chromista	Bacillariophyceae	<i>Gyrosigma spenceri</i>	HB, HS, FB	Bursa 1961a, b
Chromista	Bacillariophyceae	<i>Gyrosigma</i> sp.	HB, FB	Bursa 1961b; Anderson et al. 1981; Legendre and Simard 1979
Chromista	Bacillariophyceae	<i>Leptocylindrus danicus</i>	SFC	Harvey et al. 1997
Chromista	Bacillariophyceae	<i>Leptocylindrus minimus</i>	SFC	Harvey et al. 1997
Chromista	Bacillariophyceae	<i>Licmophora abbreviate</i>	HB, HS	Bursa 1961a
Chromista	Bacillariophyceae	<i>Licmophora anglica</i>	HB	Legendre and Simard 1979
Chromista	Bacillariophyceae	<i>Licmophora gracilis</i>	SI	Roff and Legendre 1986
Chromista	Bacillariophyceae	<i>Licmophora paradoxa</i> var. <i>tincta</i>	SI	Roff and Legendre 1986
Chromista	Bacillariophyceae	<i>Mastogloria exigua</i>	SI	Roff and Legendre 1986
Chromista	Bacillariophyceae	<i>Mastogloria smithii</i>	SI	Roff and Legendre 1986
Chromista	Bacillariophyceae	<i>Navicula bacillum</i>	SI	Roff and Legendre 1986
Chromista	Bacillariophyceae	<i>Navicula digitoradiata</i>	SI	Roff and Legendre 1986
Chromista	Bacillariophyceae	<i>Navicula distans</i>	HB, HS	Bursa 1961a
Chromista	Bacillariophyceae	<i>Navicula grani</i>	FB	Bursa 1961b
Chromista	Bacillariophyceae	<i>Navicula lanceolate</i>	SI	Roff and Legendre 1986
Chromista	Bacillariophyceae	<i>Navicula opima</i>	SI	Roff and Legendre 1986
Chromista	Bacillariophyceae	<i>Navicula pusilla</i>	SI	Roff and Legendre 1986
Chromista	Bacillariophyceae	<i>Navicula rhyngocephala</i>	SI	Roff and Legendre 1986
Chromista	Bacillariophyceae	<i>Navicula semen</i>	SI	Roff and Legendre 1986
Chromista	Bacillariophyceae	<i>Navicula septentrionalis</i>	FB	Bursa 1961b
Chromista	Bacillariophyceae	<i>Navicula vanhoffeni</i>	HB, HS, FB	Bursa 1961a, b
Chromista	Bacillariophyceae	<i>Navicula</i> sp.	HB, SFC, FB	Harvey et al. 1997; Bursa 1961b; Anderson et al. 1981; Legendre and Simard 1979

Kingdom	Class	Genus/Species	Location ¹	Source
Chromista	Bacillariophyceae	<i>Nitzschia affinis</i>	SI	Roff and Legendre 1986
Chromista	Bacillariophyceae	<i>Nitzschia bilobata</i>	FB	Bursa 1961b
Chromista	Bacillariophyceae	<i>Nitzschia closterium</i>	HB, HS, FB	Bursa 1961a, b
Chromista	Bacillariophyceae	<i>Nitzschia delicatissima</i>	HB, HS	Bursa 1961a
Chromista	Bacillariophyceae	<i>Nitzschia frigida</i>	HB, HS, FB	Bursa 1961a; Bursa 1961b
Chromista	Bacillariophyceae	<i>Nitzschia lineola</i>	HB, FB	Bursa 1961b; Anderson et al. 1981
Chromista	Bacillariophyceae	<i>Nitzschia longissimi</i>	SFC, FB, HB	Harvey et al. 1997; Bursa 1961b; Anderson et al. 1981
Chromista	Bacillariophyceae	<i>Nitzschia palea</i>	HB	Anderson et al. 1981
Chromista	Bacillariophyceae	<i>Nitzschia paradoxa</i>	SI	Roff and Legendre 1986
Chromista	Bacillariophyceae	<i>Nitzschia pungens</i>	FB	Bursa 1961b
Chromista	Bacillariophyceae	<i>Nitzschia seriata</i>	HB, HS, FB	Bursa 1961a, b; Anderson et al. 1981
Chromista	Bacillariophyceae	<i>Pinnularia alpina</i>	SI	Roff and Legendre 1986
Chromista	Bacillariophyceae	<i>Pinnularia divergens</i> var. <i>eliptica</i>	SI	Roff and Legendre 1986
Chromista	Bacillariophyceae	<i>Pinnularia microstauron</i> var. <i>subproducta</i>	SI	Roff and Legendre 1986
Chromista	Bacillariophyceae	<i>Pinnularia nobilis</i>	SI	Roff and Legendre 1986
Chromista	Bacillariophyceae	<i>Pinnularia viridis</i>	SI	Roff and Legendre 1986
Chromista	Bacillariophyceae	<i>Pinnularia</i> sp.	HB, HS, FB	Bursa 1961a, b; Legendre and Simard 1979
Chromista	Bacillariophyceae	<i>Pleurosigma angulatum</i>	SI	Roff and Legendre 1986
Chromista	Bacillariophyceae	<i>Pleurosigma fasciola</i>	SI	Roff and Legendre 1986
Chromista	Bacillariophyceae	<i>Pleurosigma macrum</i>	SI	Roff and Legendre 1986
Chromista	Bacillariophyceae	<i>Pleurosigma spenceri</i>	SI	Roff and Legendre 1986
Chromista	Bacillariophyceae	<i>Pleurosigma spenceri</i> var. <i>curvula</i>	SI	Roff and Legendre 1986
Chromista	Bacillariophyceae	<i>Pleurosigma</i> sp.	HB, HS	Bursa 1961a
Chromista	Bacillariophyceae	<i>Pseudo-nitzschia delicatissima</i>	SFC, HB	Harvey et al. 1997; Anderson et al. 1981
Chromista	Bacillariophyceae	<i>Pseudo-nitzschia seriata</i>	SFC	Harvey et al. 1997
Chromista	Bacillariophyceae	<i>Rhabdonema arcuatum</i>	HB, HS	Bursa 1961a
Chromista	Bacillariophyceae	<i>Rhaphoneis luburnjca</i>	SI	Roff and Legendre 1986
Chromista	Bacillariophyceae	<i>Rhoiscosphenia curvata</i>	HB	Legendre and Simard 1979

Kingdom	Class	Genus/Species	Location ¹	Source
Chromista	Bacillariophyceae	<i>Skeletonema costatum</i>	SFC	Harvey et al. 1997
Chromista	Bacillariophyceae	<i>Stauroneis anceps</i>	SI	Roff and Legendre 1986
Chromista	Bacillariophyceae	<i>Streptotheca thamensis</i>	FB	Bursa 1961b
Chromista	Bacillariophyceae	<i>Striatella interrupta</i>	SI	Roff and Legendre 1986
Chromista	Bacillariophyceae	<i>Surirella</i> sp.	HB, HS	Bursa 1961a; Legendre and Simard 1979
Chromista	Bacillariophyceae	<i>Synedra affinis</i>	SI	Roff and Legendre 1986
Chromista	Bacillariophyceae	<i>Synedra pulchella</i>	SI	Roff and Legendre 1986
Chromista	Bacillariophyceae	<i>Synedra tabulata</i>	SI	Roff and Legendre 1986
Chromista	Bacillariophyceae	<i>Synedra ulna</i>	HB	Anderson et al. 1981
Chromista	Bacillariophyceae	<i>Synedra</i> sp.	FB	Bursa 1961b; Legendre and Simard 1979
Chromista	Bacillariophyceae	<i>Tabellaria fenestrata</i>	HB	Legendre and Simard 1979
Chromista	Bacillariophyceae	<i>Tabellaria flocculosa</i>	HB	Anderson et al. 1981
Chromista	Bacillariophyceae	<i>Thalassionema nitzschioides</i>	SFC, HB, HS	Harvey et al. 1997; Bursa 1961a; Anderson et al. 1981
Chromista	Bacillariophyceae	<i>Thalassiosira</i> sp.	SFC, FB	Harvey et al. 1997; Bursa 1961b
Chromista	Bacillariophyceae	<i>Thalassiosira bioculata</i>	SFC	Harvey et al. 1997
Chromista	Bacillariophyceae	<i>Thalassiosira condensata</i>	FB	Bursa 1961b
Chromista	Bacillariophyceae	<i>Thalassiosira gravida</i>	SFC	Harvey et al. 1997
Chromista	Bacillariophyceae	<i>Thalassiosira nordenskioldii</i>	SFC, FB	Harvey et al. 1997; Bursa 1961b
Chromista	Bacillariophyceae	<i>Thalassiosira rotula</i>	FB	Bursa 1961b
Chromista	Bacillariophyceae	<i>Thalassiosira subtilis</i>	FB	Bursa 1961b
Chromista	Bacillariophyceae	<i>Thalassiothrix frauenfeldti</i>	HB, HS, FB	Bursa 1961a, b; Anderson et al. 1981
Chromista	Bacillariophyceae	<i>Thalassiothrix longissimi</i>	HB, HS	Bursa 1961a
Chromista	Ciliata	<i>Ptychocylis arctica</i>	HB, HS	Bursa 1961a
Chromista	Ciliata	<i>Ptychocylis gigantean</i>	HB, HS	Bursa 1961a
Chromista	Ciliata	<i>Ptychocylis media</i>	HB, HS	Bursa 1961a
Chromista	Ciliata	<i>Ptychocylis obtusa</i>	HB, HS	Bursa 1961a
Chromista	Ciliata	<i>Ptychocylis urnula</i>	HB, HS	Bursa 1961a
Chromista	Ciliata	<i>Ptychocylis</i> sp.	HB, HS	Bursa 1961a
Chromista	Coccolithophyceae	<i>Coccolithus huxleyi</i>	HB, HS	Bursa 1961a

Kingdom	Class	Genus/Species	Location ¹	Source
Chromista	Coccolithophyceae	<i>Coccolithus</i> sp.	HB, HS	Bursa 1961a
Chromista	Coccolithophyceae	<i>Pontosphaera ditrematolitha</i>	FB	Bursa 1961b
Chromista	Coscinodiscophyceae	<i>Actinoptychus undulates</i>	HB, HS	Bursa 1961a
Chromista	Coscinodiscophyceae	<i>Asteromphalus heptactis</i>	HB	Anderson et al. 1981
Chromista	Coscinodiscophyceae	<i>Asteromphalus robustus</i>	HB	Anderson et al. 1981
Chromista	Coscinodiscophyceae	<i>Coscinodiscus centralis</i>	HB	Anderson et al. 1981
Chromista	Coscinodiscophyceae	<i>Coscinodiscus concinnus</i>	HB, HS	Bursa 1961a
Chromista	Coscinodiscophyceae	<i>Coscinodiscus curvatulus</i>	HB	Anderson et al. 1981
Chromista	Coscinodiscophyceae	<i>Coscinodiscus excentricus</i>	FB	Bursa 1961b
Chromista	Coscinodiscophyceae	<i>Coscinodiscus grani</i>	HB, HS, FB	Bursa 1961a, b
Chromista	Coscinodiscophyceae	<i>Coscinodiscus lineatus</i>	HB, HS	Bursa 1961a
Chromista	Coscinodiscophyceae	<i>Coscinodiscus marginatus</i>	HB, HS	Bursa 1961a
Chromista	Coscinodiscophyceae	<i>Coscinodiscus oculis iridis</i>	HB, HS, FB	Bursa 1961a, b
Chromista	Coscinodiscophyceae	<i>Coscinodiscus rapiatus</i>	SI	Roff and Legendre 1986
Chromista	Coscinodiscophyceae	<i>Coscinodiscus rothii</i>	HB	Anderson et al. 1981
Chromista	Coscinodiscophyceae	<i>Melosira arenaria</i>	HB, HS, FB	Bursa 1961a; Bursa 1961b
Chromista	Coscinodiscophyceae	<i>Melosira arctica</i>	SI , FB	Roff and Legendre 1986, Bursa 1961b
Chromista	Coscinodiscophyceae	<i>Melosira borrii</i>	FB	Bursa 1961b
Chromista	Coscinodiscophyceae	<i>Melosira distans</i>	HB, HS	Bursa 1961a
Chromista	Coscinodiscophyceae	<i>Melosira granulate</i>	HB	Anderson et al. 1981
Chromista	Coscinodiscophyceae	<i>Melosira islandica</i>	SI , HB, FB	Roff and Legendre 1986; Bursa 1961b; Anderson et al. 1981
Chromista	Coscinodiscophyceae	<i>Melosira italica</i>	HB	Anderson et al. 1981
Chromista	Coscinodiscophyceae	<i>Melosira nummuloides</i>	HB, HS	Bursa 1961a
Chromista	Coscinodiscophyceae	<i>Melosira sculpta</i>	HB, HS	Bursa 1961a
Chromista	Coscinodiscophyceae	<i>Melosira</i> sp.	HB, HS, FB	Bursa 1961a, b; Legendre and Simard 1979
Chromista	Coscinodiscophyceae	<i>Rhizosolenia alata</i>	HB, HS, FB	Bursa 1961a, b; Anderson et al. 1981
Chromista	Coscinodiscophyceae	<i>Rhizosolenia delicatula</i>	HB	Anderson et al. 1981
Chromista	Coscinodiscophyceae	<i>Rhizosolenia fragillissima</i>	HB, HS	Bursa 1961a; Anderson et al. 1981

Kingdom	Class	Genus/Species	Location ¹	Source
Chromista	Coscinodiscophyceae	<i>Rhizosolenia hebetata</i> var. <i>subacuta</i>	HB	Anderson et al. 1981
Chromista	Coscinodiscophyceae	<i>Rhizosolenia hebetata</i> var. <i>semispina</i>	HB	Anderson et al. 1981
Chromista	Coscinodiscophyceae	<i>Rhizosolenia pungens</i>	HB	Anderson et al. 1981
Chromista	Coscinodiscophyceae	<i>Rhizosolenia setigera</i>	HB	Anderson et al. 1981
Chromista	Coscinodiscophyceae	<i>Rhizosolenia styliformis</i>	HB, HS, FB	Bursa 1961a, b; Anderson et al. 1981
Chromista	Coscinodiscophyceae	<i>Rhizosolenia styliformis</i> v. <i>shrubslei</i>	HB, HS	Bursa 1961a
Chromista	Coscinodiscophyceae	<i>Rhizosolenia styliformis</i> v. <i>hebetata</i>	HB, HS	Bursa 1961a
Chromista	Coscinodiscophyceae	<i>Rhizosolenia</i> sp.	HB	Legendre and Simard 1979
Chromista	Coscinodiscophyceae	<i>Stephanopyxis nipponica</i>	HB, HS	Bursa 1961a
Chromista	Chrysophyceae	<i>Chrysophytes</i> sp. 1	SFC	Harvey et al. 1997
Chromista	Chrysophyceae	<i>Chrysophytes</i> sp. 2	SFC	Harvey et al. 1997
Chromista	Chrysophyceae	<i>Dinobryon balticum</i>	SFC, HB, HS	Harvey et al. 1997; Bursa 1961a
Chromista	Chrysophyceae	<i>Dinobryon bavaricum</i>	SI	Roff and Legendre 1986
Chromista	Chrysophyceae	<i>Dinobryon faculiferum</i>	SFC	Harvey et al. 1997
Chromista	Chrysophyceae	<i>Dinobryon pellucidum</i>	HB, HS	Bursa 1961a
Chromista	Chrysophyceae	<i>Dinobryon tabellariae</i>	SI	Roff and Legendre 1986
Chromista	Chrysophyceae	<i>Distephanus</i> spp.	HB	Legendre and Simard 1979
Chromista	Chrysophyceae	<i>Ebria tripartiita</i>	HB	Legendre and Simard 1979
Chromista	Chrysophyceae	<i>Ochromonas</i> sp.	SFC	Harvey et al. 1997
Chromista	Cryptophyceae	<i>Cryptophytes</i> sp. 1	SFC	Harvey et al. 1997
Chromista	Cryptophyceae	<i>Cryptophytes</i> sp. 2	SFC	Harvey et al. 1997
Chromista	Cryptophyceae	<i>Cryptophytes</i> sp. 3	SFC	Harvey et al. 1997
Chromista	Dictyochophyceae	<i>Apedinella radians</i>	SFC	Harvey et al. 1997
Chromista	Dictyochophyceae	<i>Dictyocha speculum</i>	SFC	Harvey et al. 1997
Chromista	Dictyochophyceae	<i>Distephanus speculum</i>	HB, HS	Bursa 1961a
Chromista	Dictyochophyceae	<i>Pseudopedinella pyriformis</i>	SFC	Harvey et al. 1997
Chromista	Dinophyceae	<i>Alexandrium ostenfeldii</i>	SFC	Harvey et al. 1997

Kingdom	Class	Genus/Species	Location ¹	Source
Chromista	Dinophyceae	<i>Amphidinium britannicum</i>	HB	Anderson et al. 1981
Chromista	Dinophyceae	<i>Amphidinium crassum</i>	HB	Anderson et al. 1981
Chromista	Dinophyceae	<i>Amphidinium crissum</i>	SFC	Harvey et al. 1997
Chromista	Dinophyceae	<i>Amphidinium extensum</i>	HB	Anderson et al. 1981
Chromista	Dinophyceae	<i>Amphidinium flexum</i>	SI	Roff and Legendre 1986
Chromista	Dinophyceae	<i>Amphidinium hyalinum</i>	HB	Anderson et al. 1981
Chromista	Dinophyceae	<i>Amphidinium klebsi</i>	HB	Anderson et al. 1981
Chromista	Dinophyceae	<i>Amphidium latum</i>	SI	Roff and Legendre 1986
Chromista	Dinophyceae	<i>Amphidinium longum</i>	HB	Anderson et al. 1981
Chromista	Dinophyceae	<i>Amphidinium luteum</i>	HB	Anderson et al. 1981
Chromista	Dinophyceae	<i>Amphidinium phaeocysticola</i>	HB	Anderson et al. 1981
Chromista	Dinophyceae	<i>Amphidium speculum</i>	SI	Roff and Legendre 1986
Chromista	Dinophyceae	<i>Amphidinium</i> sp.	HB, HS	Bursa 1961a
Chromista	Dinophyceae	<i>Amphisolenia</i> sp.	SI	Roff and Legendre 1986
Chromista	Dinophyceae	<i>Ceratium arcticum</i>	SFC, HB	Harvey et al. 1997; Anderson et al. 1981
Chromista	Dinophyceae	<i>Ceratium bucephalum</i>	HB, HS	Bursa 1961a
Chromista	Dinophyceae	<i>Ceratium hirundinella</i>	HB	Anderson et al. 1981
Chromista	Dinophyceae	<i>Ceratium karsteni</i>	HB, HS	Bursa 1961a
Chromista	Dinophyceae	<i>Ceratium lineatum</i>	HB, HS	Bursa 1961a
Chromista	Dinophyceae	<i>Ceratium longipes</i>	HB, HS	Bursa 1961a; Anderson et al. 1981
Chromista	Dinophyceae	<i>Ceratium macroceros</i>	HB, HS	Bursa 1961a
Chromista	Dinophyceae	<i>Ceratium tripos</i>	HB, HS	Bursa 1961a
Chromista	Dinophyceae	<i>Ceratium</i> sp.	HB, HS	Bursa 1961a; Legendre and Simard 1979
Chromista	Dinophyceae	<i>Cochlodinium brandti</i>	SI	Roff and Legendre 1986
Chromista	Dinophyceae	<i>Cochlodinium helix</i>	SI	Roff and Legendre 1986
Chromista	Dinophyceae	<i>Cochlodinium</i> sp.	SFC	Harvey et al. 1997
Chromista	Dinophyceae	<i>Dinophysis acuminata</i>	SFC	Harvey et al. 1997
Chromista	Dinophyceae	<i>Dinophysis acuminata</i>	HB, HS	Bursa 1961a; Anderson et al. 1981
Chromista	Dinophyceae	<i>Dinophysis acuta</i>	HB, HS	Bursa 1961a; Anderson et al. 1981

Kingdom	Class	Genus/Species	Location ¹	Source
Chromista	Dinophyceae	<i>Dinophysis arctica</i>	HB, HS	Bursa 1961a; Anderson et al. 1981
Chromista	Dinophyceae	<i>Dinophysis grani</i>	HB, HS	Bursa 1961a
Chromista	Dinophyceae	<i>Dinophysis islandica</i>	HB, HS	Bursa 1961a
Chromista	Dinophyceae	<i>Dinophysis norvegica</i>	HB, HS	Bursa 1961a; Anderson et al. 1981
Chromista	Dinophyceae	<i>Dinophysis ovum</i>	HB	Anderson et al. 1981
Chromista	Dinophyceae	<i>Dinophysis rotundata</i>	HB	Anderson et al. 1981
Chromista	Dinophyceae	<i>Dinophysis robusta</i>	HB, HS	Bursa 1961a
Chromista	Dinophyceae	<i>Dinoflagellate</i> sp.	SFC	Harvey et al. 1997
Chromista	Dinophyceae	<i>Exuviella baltica</i>	HB, HS	Bursa 1961a
Chromista	Dinophyceae	<i>Exuviella marina</i>	SI	Roff and Legendre 1986
Chromista	Dinophyceae	<i>Glenodinium lenticula</i>	HB, HS	Bursa 1961a
Chromista	Dinophyceae	<i>Glenodinium obliquum</i>	HB	Anderson et al. 1981
Chromista	Dinophyceae	<i>Glenodinium</i> sp.	HB, HS	Bursa 1961a
Chromista	Dinophyceae	<i>Goniodoma polyedricum</i>	HB, HS	Bursa 1961a
Chromista	Dinophyceae	<i>Gonyaulax catenata</i>	HB, HS	Bursa 1961a
Chromista	Dinophyceae	<i>Gonyaulax polyedra</i>	SI	Roff and Legendre 1986
Chromista	Dinophyceae	<i>Gonyaulax spinifera</i>	SFC	Harvey et al. 1997
Chromista	Dinophyceae	<i>Gonyaulax</i> sp.	HB, HS	Bursa 1961a
Chromista	Dinophyceae	<i>Gymnodinium albulum</i>	HB	Anderson et al. 1981
Chromista	Dinophyceae	<i>Gymnodinium arcticum</i>	HB	Anderson et al. 1981
Chromista	Dinophyceae	<i>Gymnodinium bohemicum</i>	HB	Anderson et al. 1981
Chromista	Dinophyceae	<i>Gymnodinium breve</i>	SI	Roff and Legendre 1986
Chromista	Dinophyceae	<i>Gymnodinium coeruleum</i>	SI	Roff and Legendre 1986
Chromista	Dinophyceae	<i>Gymnodinium conicum</i>	SI	Roff and Legendre 1986
Chromista	Dinophyceae	<i>Gymnodinium excavatum</i>	HB	Anderson et al. 1981
Chromista	Dinophyceae	<i>Gymnodinium filum</i>	HB	Anderson et al. 1981
Chromista	Dinophyceae	<i>Gymnodinium fuscum</i>	SI	Roff and Legendre 1986
Chromista	Dinophyceae	<i>Gymnodinium fusiforme</i>	SFC	Harvey et al. 1997
Chromista	Dinophyceae	<i>Gymnodinium helveticum</i>	HB	Anderson et al. 1981

Kingdom	Class	Genus/Species	Location ¹	Source
Chromista	Dinophyceae	<i>Gymnodinium heterostriatum</i>	SI	Roff and Legendre 1986
Chromista	Dinophyceae	<i>Gymnodinium hyalinium</i>	SI	Roff and Legendre 1986
Chromista	Dinophyceae	<i>Gymnodinium marinum</i>	SI	Roff and Legendre 1986
Chromista	Dinophyceae	<i>Gymnodinium minor</i>	SI	Roff and Legendre 1986
Chromista	Dinophyceae	<i>Gymnodinium ordinatum</i>	HB	Anderson et al. 1981
Chromista	Dinophyceae	<i>Gymnodinium pygmaeum</i>	HB	Anderson et al. 1981
Chromista	Dinophyceae	<i>Gymnodinium rhomboids</i>	HB	Anderson et al. 1981
Chromista	Dinophyceae	<i>Gymnodinium rubrocinctum</i>	SI	Roff and Legendre 1986
Chromista	Dinophyceae	<i>Gymnodinium simplex</i>	HB	Anderson et al. 1981
Chromista	Dinophyceae	<i>Gymnodinium uberrimum</i>	HB	Anderson et al. 1981
Chromista	Dinophyceae	<i>Gymnodinium varians</i>	HB	Anderson et al. 1981
Chromista	Dinophyceae	<i>Gymnodinium</i> sp.	SFC	Harvey et al. 1997
Chromista	Dinophyceae	<i>Gymnodium</i> sp. 1	SFC	Harvey et al. 1997
Chromista	Dinophyceae	<i>Gyrodinium arcticum</i>	FB	Bursa 1961b
Chromista	Dinophyceae	<i>Gyrodinium britannia</i>	HB	Anderson et al. 1981
Chromista	Dinophyceae	<i>Gyrodinium falcatum</i>	SI	Roff and Legendre 1986
Chromista	Dinophyceae	<i>Gyrodinium fissum</i>	SI	Roff and Legendre 1986
Chromista	Dinophyceae	<i>Gyrodinium glaucum</i>	SI	Roff and Legendre 1986
Chromista	Dinophyceae	<i>Gyrodinium intercalaris</i>	Foxe Basin	Bursa 1961b
Chromista	Dinophyceae	<i>Gyrodinium pingue</i>	HB	Anderson et al. 1981
Chromista	Dinophyceae	<i>Gyrodinium spirale</i>	HB	Anderson et al. 1981
Chromista	Dinophyceae	<i>Hemidinium nasutum</i>	SI	Roff and Legendre 1986
Chromista	Dinophyceae	<i>Heterocapsa rotundata</i>	SFC	Harvey et al. 1997
Chromista	Dinophyceae	<i>Katodinium glaucum</i>	SFC	Harvey et al. 1997
Chromista	Dinophyceae	<i>Massartia rotundata</i>	HB	Anderson et al. 1981
Chromista	Dinophyceae	<i>Minuscula bipes</i>	SFC	Harvey et al. 1997
Chromista	Dinophyceae	<i>Nematodinium armatum</i>	SI	Roff and Legendre 1986
Chromista	Dinophyceae	<i>Oxytoxum gladiolus</i>	HB, HS	Bursa 1961a
Chromista	Dinophyceae	<i>Oxytoxum sphaeroideum</i>	HB	Anderson et al. 1981

Kingdom	Class	Genus/Species	Location ¹	Source
Chromista	Dinophyceae	<i>Oxytoxum</i> sp.	SFC	Harvey et al. 1997
Chromista	Dinophyceae	<i>Peridinium avellana</i>	HB, HS	Bursa 1961a
Chromista	Dinophyceae	<i>Peridinium achromaticum</i>	HB, HS	Bursa 1961a
Chromista	Dinophyceae	<i>Peridinium brevipes</i>	HB, HS	Bursa 1961a; Anderson et al. 1981
Chromista	Dinophyceae	<i>Peridinium cerasus</i>	HB, HS	Bursa 1961a
Chromista	Dinophyceae	<i>Peridinium conicum</i>	SI, HB, HS	Roff and Legendre 1986; Bursa 1961a
Chromista	Dinophyceae	<i>Peridinium crassipes</i>	HB, HS	Bursa 1961a
Chromista	Dinophyceae	<i>Peridinium curvipes</i>	HB, HS	Bursa 1961a
Chromista	Dinophyceae	<i>Peridinium denticulatum</i>	HB, HS	Bursa 1961a
Chromista	Dinophyceae	<i>Peridinium depressum</i>	HB, HS	Bursa 1961a; Anderson et al. 1981
Chromista	Dinophyceae	<i>Peridinium divergens</i>	HB, HS	Bursa 1961a
Chromista	Dinophyceae	<i>Peridinium finlandicum</i>	HB, HS	Bursa 1961a
Chromista	Dinophyceae	<i>Peridinium globulus</i>	HB, HS	Bursa 1961a; Anderson et al. 1981
Chromista	Dinophyceae	<i>Peridinium grani</i>	HB, HS	Bursa 1961a
Chromista	Dinophyceae	<i>Peridinium islandicum</i>	HB, HS	Bursa 1961a
Chromista	Dinophyceae	<i>Peridinium leonis</i>	HB, HS	Bursa 1961a
Chromista	Dinophyceae	<i>Peridinium minusculum</i>	HB, HS	Bursa 1961a
Chromista	Dinophyceae	<i>Peridinium mite</i>	HB, HS	Bursa 1961a
Chromista	Dinophyceae	<i>Peridinium obtusum</i>	HB, HS	Bursa 1961a
Chromista	Dinophyceae	<i>Peridinium oceanicum</i>	HB, HS	Bursa 1961a
Chromista	Dinophyceae	<i>Peridinium ovatum</i>	HB, HS	Bursa 1961a; Legendre and Simard 1979
Chromista	Dinophyceae	<i>Peridinium pallidum</i>	HB, HS	Bursa 1961a; Anderson et al. 1981
Chromista	Dinophyceae	<i>Peridinium pellucidum</i>	HB	Anderson et al. 1981
Chromista	Dinophyceae	<i>Peridinium pentagonum</i>	HB, HS, SI	Roff and Legendre 1986; Bursa 1961a
Chromista	Dinophyceae	<i>Peridinium pusillum</i>	HB	Anderson et al. 1981
Chromista	Dinophyceae	<i>Peridinium roseum</i>	HB, HS	Bursa 1961a
Chromista	Dinophyceae	<i>Peridinium simplex</i>	HB, HS	Bursa 1961a
Chromista	Dinophyceae	<i>Peridinium steini</i>	HB, HS	Bursa 1961a
Chromista	Dinophyceae	<i>Peridinium subinermis</i>	HB, HS	Bursa 1961a

Kingdom	Class	Genus/Species	Location ¹	Source
Chromista	Dinophyceae	<i>Peridinium subcurvipes</i>	HB, HS	Bursa 1961a
Chromista	Dinophyceae	<i>Peridinium trochoideum</i>	HB, HS	Bursa 1961a
Chromista	Dinophyceae	<i>Peridinium thorianum</i>	HB, HS	Bursa 1961a
Chromista	Dinophyceae	<i>Peridinium triquetrum</i>	HB, HS	Bursa 1961a; Anderson et al. 1981
Chromista	Dinophyceae	<i>Phalacroma rotundatum</i>	HB, HS	Bursa 1961a
Chromista	Dinophyceae	<i>Phalacroma rudi</i>	HB, HS	Bursa 1961a
Chromista	Dinophyceae	<i>Prorocentrum aporum</i>	SI	Roff and Legendre 1986
Chromista	Dinophyceae	<i>Prorocentrum compressum</i>	SI	Roff and Legendre 1986
Chromista	Dinophyceae	<i>Prorocentrum cordatum</i>	SFC	Harvey et al. 1997
Chromista	Dinophyceae	<i>Prorocentrum dentatum</i>	SI	Roff and Legendre 1986
Chromista	Dinophyceae	<i>Prorocentrum micans</i>	SI	Roff and Legendre 1986
Chromista	Dinophyceae	<i>Prorocentrum scutellum</i>	SI	Roff and Legendre 1986
Chromista	Dinophyceae	<i>Proceratium reticulatum</i>	HB, HS	Bursa 1961a
Chromista	Dinophyceae	<i>Proto-peridinium</i> sp.	SFC	Harvey et al. 1997
Chromista	Dinophyceae	<i>Proto-peridinium bipes</i>	HB	Anderson et al. 1981
Chromista	Dinophyceae	<i>Proto-peridinium brevipes</i>	SFC	Harvey et al. 1997
Chromista	Dinophyceae	<i>Proto-peridinium pellucidum</i>	SFC	Harvey et al. 1997
Chromista	Dinophyceae	<i>Scrippsiella faeroeense</i>	HB	Anderson et al. 1981
Chromista	Dinophyceae	<i>Scrippsiella trochoidea</i>	SFC	Harvey et al. 1997
Chromista	Dinophyceae	<i>Torodinium robustum</i>	SFC, HB	Harvey et al. 1997; Anderson et al. 1981
Chromista	Katablepharidaceae	<i>Leucocryptos marina</i>	SFC	Harvey et al. 1997
Chromista	Litostomatea	<i>Didinium gargantuan</i>	HB, HS	Bursa 1961a
Chromista	Mediophyceae	<i>Attheya decora</i>	HB, HS	Bursa 1961a
Chromista	Mediophyceae	<i>Bacteriosira fragilis</i>	HB, HS, FB	Bursa 1961a, b
Chromista	Mediophyceae	<i>Biddulphia aurita</i>	HB, HS, FB	Bursa 1961a, b
Chromista	Mediophyceae	<i>Biddulphia</i> sp.	HB	Anderson et al. 1981
Chromista	Mediophyceae	<i>Chaetoceros</i> sp.	SFC	Harvey et al. 1997
Chromista	Mediophyceae	<i>Chaetoceros affinis</i>	FB	Bursa 1961b

Kingdom	Class	Genus/Species	Location ¹	Source
Chromista	Mediophyceae	<i>Chaetoceros atlanticus</i>	SFC, HB, HS, FB	Harvey et al. 1997; Bursa 1961a, b; Anderson et al. 1981
Chromista	Mediophyceae	<i>Chaetoceros borealis</i>	HB, HS, FB	Bursa 1961a, b
Chromista	Mediophyceae	<i>Chaetoceros brevis</i>	HB	Anderson et al. 1981
Chromista	Mediophyceae	<i>Chaetoceros concavicornis</i>	SFC, HB, HS	Harvey et al. 1997; Bursa 1961a
Chromista	Mediophyceae	<i>Chaetoceros convolutus</i>	SFC, HB, HS	Harvey et al. 1997; Bursa 1961a; Anderson et al. 1981
Chromista	Mediophyceae	<i>Chaetoceros compressus</i>	SFC, HB, HS, FB	Bursa 1961a, b; Harvey et al. 1997; Anderson et al. 1981
Chromista	Mediophyceae	<i>Chaetoceros constrictus</i>	HB, HS, FB	Bursa 1961a, b
Chromista	Mediophyceae	<i>Chaetoceros curvisetus</i>	HB, HS, FB	Bursa 1961a, b
Chromista	Mediophyceae	<i>Chaetoceros danicus</i>	HB	Anderson et al. 1981
Chromista	Mediophyceae	<i>Chaetoceros debilis</i>	SFC, HB, HS, FB	Harvey et al. 1997; Bursa 1961a, b; Anderson et al. 1981
Chromista	Mediophyceae	<i>Chaetoceros decipiens</i>	SFC, FB, HB, HS	Harvey et al. 1997; Bursa 1961a, b; Anderson et al. 1981
Chromista	Mediophyceae	<i>Chaetoceros diadema</i>	SFC, HB, HS	Harvey et al. 1997; Bursa 1961a; Anderson et al. 1981
Chromista	Mediophyceae	<i>Chaetoceros eibeni</i>	HB, HS, FB	Bursa 1961a, b
Chromista	Mediophyceae	<i>Chaetoceros fragilis</i>	HB	Anderson et al. 1981
Chromista	Mediophyceae	<i>Chaetoceros furcellatus</i>	SFC, HB, HS, FB	Harvey et al. 1997; Bursa 1961a, b
Chromista	Mediophyceae	<i>Chaetoceros gracilis</i>	HB, HS, FB	Bursa 1961a, b
Chromista	Mediophyceae	<i>Chaetoceros holsaticus</i>	HB	Anderson et al. 1981
Chromista	Mediophyceae	<i>Chaetoceros karianus</i>	HB, HS, FB	Bursa 1961a; Bursa 1961b
Chromista	Mediophyceae	<i>Chaetoceros lacinosus</i>	SFC, HB, HS, FB	Harvey et al. 1997; Bursa 1961a, b; Anderson et al. 1981
Chromista	Mediophyceae	<i>Chaetoceros lorenzianus</i>	HB, HS, FB	Bursa 1961a, b; Anderson et al. 1981
Chromista	Mediophyceae	<i>Chaetoceros mitra</i>	FB	Bursa 1961b
Chromista	Mediophyceae	<i>Chaetoceros neogracile</i>	HB	Anderson et al. 1981
Chromista	Mediophyceae	<i>Chaetoceros perpusillus</i>	FB	Bursa 1961b
Chromista	Mediophyceae	<i>Chaetoceros septentrionalis</i>	HB, HS, FB	Bursa 1961a, b; Anderson et al. 1981
Chromista	Mediophyceae	<i>Chaetoceros similis</i>	SFC	Harvey et al. 1997
Chromista	Mediophyceae	<i>Chaetoceros simplex</i>	SI	Roff and Legendre 1986
Chromista	Mediophyceae	<i>Chaetoceros socialis</i>	SFC, HB, HS, FB	Harvey et al. 1997; Bursa 1961a; Bursa 1961b

Kingdom	Class	Genus/Species	Location ¹	Source
Chromista	Mediophyceae	<i>Chaetoceros subsecundus</i>	FB	Bursa 1961b
Chromista	Mediophyceae	<i>Chaetoceros subtilis</i>	SFC	Harvey et al. 1997
Chromista	Mediophyceae	<i>Chaetoceros teres</i>	HB, HS, FB	Bursa 1961a, b; Anderson et al. 1981
Chromista	Mediophyceae	<i>Chaetoceros wighami</i>	HB, HS, FB	Bursa 1961a, b; Anderson et al. 1981
Chromista	Mediophyceae	<i>Coscinosira polychorda</i>	HB, HS, FB	Bursa 1961a, b; Anderson et al. 1981
Chromista	Mediophyceae	<i>Cyclotella comta</i>	HB	Anderson et al. 1981
Chromista	Mediophyceae	<i>Cyclotella</i> sp. 1	HB	Legendre and Simard 1979
Chromista	Mediophyceae	<i>Cyclotella</i> sp. 2	HB	Legendre and Simard 1979
Chromista	Mediophyceae	<i>Cyclotella</i> sp. 3	HB	Legendre and Simard 1979
Chromista	Mediophyceae	<i>Denotula confervacea</i>	FB	Bursa 1961b
Chromista	Mediophyceae	<i>Eucampia groenlandica</i>	HB	Anderson et al. 1981
Chromista	Mediophyceae	<i>Eucampia zodiacus</i>	HB, HS, FB	Bursa 1961a, b
Chromista	Mediophyceae	<i>Isthmia nervosa</i>	HB, HS	Bursa 1961a
Chromista	Mediophyceae	<i>Lauderia glacialis</i>	FB	Bursa 1961b
Chromista	Mediophyceae	<i>Leptocylindrus danicus</i>	HB, HS	Bursa 1961a; Anderson et al. 1981
Chromista	Mediophyceae	<i>Leptocylindrus minimus</i>	HB, HS	Bursa 1961a; Anderson et al. 1981
Chromista	Mediophyceae	<i>Porosira glacialis</i>	HB, HS	Bursa 1961a
Chromista	Mediophyceae	<i>Skeletonema costatum</i>	HB, HS	Bursa 1961a; Anderson et al. 1981
Chromista	Mediophyceae	<i>Stephanodiscus astaea</i>	HB, HS	Bursa 1961a
Chromista	Mediophyceae	<i>Stephanodiscus hantzchii</i>	HB	Anderson et al. 1981
Chromista	Mediophyceae	<i>Thalassiosira bioculata</i>	HB, HS	Bursa 1961a
Chromista	Mediophyceae	<i>Thalassiosira decipiens</i>	HB, HS	Bursa 1961a; Anderson et al. 1981
Chromista	Mediophyceae	<i>Thalassiosira gravida</i>	HB, HS, FB	Bursa 1961a; Bursa 1961b; Anderson et al. 1981
Chromista	Mediophyceae	<i>Thalassiosira hyalina</i>	HB, HS	Bursa 1961a; Anderson et al. 1981
Chromista	Mediophyceae	<i>Thalassiosira nordenskjöldi</i>	HB, HS, FB	Bursa 1961a; Bursa 1961b; Anderson et al. 1981
Chromista	Mediophyceae	<i>Thalassiosira rotula</i>	HB, HS, FB	Bursa 1961a; Bursa 1961b
Chromista	Mediophyceae	<i>Thalassiosira subtilis</i>	HB, HS	Bursa 1961a
Chromista	Mediophyceae	<i>Thalassiosira</i> sp.	HB, HS	Bursa 1961a; Legendre and Simard
Chromista	Oligotrichea	<i>Codonella</i> sp.	HB, HS	Bursa 1961a

Kingdom	Class	Genus/Species	Location ¹	Source
Chromista	Oligotrichea	<i>Leprotintinnus bottnicus</i>	HB, HS	Bursa 1961a
Chromista	Oligotrichea	<i>Loboea acuminata</i>	HB, HS	Bursa 1961a
Chromista	Oligotrichea	<i>Loboea conica</i>	HB, HS	Bursa 1961a
Chromista	Oligotrichea	<i>Loboea reticulate</i>	HB, HS	Bursa 1961a
Chromista	Oligotrichea	<i>Loboea strobili</i>	HB, HS	Bursa 1961a
Chromista	Oligotrichea	<i>Loboea spiralis</i>	HB, HS	Bursa 1961a
Chromista	Oligotrichea	<i>Stenosomella ventricosa</i>	HB, HS	Bursa 1961a
Chromista	Oligotrichea	<i>Tintinnopsis beroidea</i>	HB, HS	Bursa 1961a
Chromista	Oligotrichea	<i>Tintinnopsis karajakensis</i>	HB, HS	Bursa 1961a
Chromista	Oligotrichea	<i>Tintinnopsis parvula</i>	HB, HS	Bursa 1961a
Chromista	Oligotrichea	<i>Tintinnopsis</i> sp.	HB, HS	Bursa 1961a
Chromista	Oligotrichea	<i>Tintinnus acuminatus</i>	HB, HS	Bursa 1961a
Chromista	Oligotrichea	<i>Tintinnus norvegicus</i>	HB, HS	Bursa 1961a
Chromista	Oligotrichea	<i>Undella</i> sp.	HB, HS	Bursa 1961a
Chromista	Oligotrichea	<i>Woodania conicoides</i>	HB, HS	Bursa 1961a
Chromista	Phaeophyceae	<i>Agarum</i> sp.	RWS, SB	Nunavut 2012, 2014
Chromista	Phaeophyceae	<i>Alaria esculenta</i>	RWS	Nunavut 2012
Chromista	Phaeophyceae	<i>Battersia arctica</i>	FC	Lee 1980
Chromista	Phaeophyceae	<i>Desmarestia aculeate</i>	FC, RWS	Lee 1980; Nunavut 2012
Chromista	Phaeophyceae	<i>Dictyosiphon foeniculaceus</i>	FC	Lee 1980
Chromista	Phaeophyceae	<i>Fucus</i> sp.	RWS, SB	Nunavut 2012, 2014
Chromista	Phaeophyceae	<i>Laminaria longicururus</i>	ES, RWS	Nunavut 2012, 2014
Chromista	Phaeophyceae	<i>Leptonematella fasciculate</i>	FC	Lee 1980
Chromista	Phaeophyceae	<i>Phaeostroma pustulosum</i>	FC	Lee 1980
Chromista	Phaeophyceae	<i>Pylaiella littoralis</i>	FC	Lee 1980
Chromista	Phaeophyceae	<i>Saccharina latissima</i>	FC	Lee 1980
Chromista	Phaeophyceae	<i>Stictyosiphon tortilis</i>	FC	Lee 1980
Chromista	Thecofilsea	<i>Ebria tripartita</i>	HB, HS	Bursa 1961a
Chromista	Prymnesiophyceae	<i>Chrysochromulina</i> sp.	SFC	Harvey et al. 1997

Kingdom	Class	Genus/Species	Location ¹	Source
Chromista	Xanthophyceae	<i>Meringosphaera mediterranea</i>	SFC	Harvey et al. 1997
Plantae	Chlorophyceae	<i>Ankistrodesmus falcatus</i>	SI	Roff and Legendre 1986
Plantae	Chlorophyceae	<i>Ankistrodesmus spiralis</i>	SI	Roff and Legendre 1986
Plantae	Chlorophyceae	<i>Arthrochaete penetrans</i>	FC	Lee 1980
Plantae	Chlorophyceae	<i>Arthrodesmus incus</i>	HB	Legendre and Simard 1979
Plantae	Chlorophyceae	<i>Binuclearia</i> sp.	SI	Roff and Legendre 1986
Plantae	Chlorophyceae	<i>Chlorochytrium dermatocolax</i>	FC	Lee 1980
Plantae	Chlorophyceae	<i>Coccomonas orbicularis</i>	SI	Roff and Legendre 1986
Plantae	Chlorophyceae	<i>Diplostauron elegans</i>	SFC	Harvey et al. 1997
Plantae	Chlorophyceae	<i>Euastrum elegans</i>	SI	Roff and Legendre 1986
Plantae	Chlorophyceae	<i>Gleocystis</i> sp.	SI	Roff and Legendre 1986
Plantae	Chlorophyceae	<i>Gloeomonas</i> sp.	SI	Roff and Legendre 1986
Plantae	Chlorophyceae	<i>Lobomonas</i> sp.	SI	Roff and Legendre 1986
Plantae	Chlorophyceae	<i>Oedogonium</i> sp.	SI	Roff and Legendre 1986
Plantae	Chlorophyceae	<i>Pandorina</i> spp.	HB	Legendre and Simard 1979
Plantae	Chlorophyceae	<i>Pediastrum duplex</i>	SI	Roff and Legendre 1986
Plantae	Chlorophyceae	<i>Pleodorina</i> sp.	SI	Roff and Legendre 1986
Plantae	Chlorophyceae	<i>Scenedesmus quadricauda</i>	HB, HS	Bursa 1961a
Plantae	Chlorophyceae	<i>Sphaerellopsis</i> sp.	SI	Roff and Legendre 1986
Plantae	Chlorophyceae	<i>Spondylosium planum</i>	SI	Roff and Legendre 1986
Plantae	Chlorophyceae	<i>Staurastrum paradoxum</i>	SI	Roff and Legendre 1986
Plantae	Chlorophyceae	<i>Straurastrum megacanthum</i>	HB	Legendre and Simard 1979
Plantae	Chlorophyceae	<i>Thorakomonas phacotoides</i>	SI	Roff and Legendre 1986
Plantae	Chlorophyceae	<i>Urococcus</i> sp.	SI	Roff and Legendre 1986
Plantae	Chlorodendrophyceae	<i>Pachysphaera pelagica</i>	SFC	Harvey et al. 1997
Plantae	Chlorodendrophyceae	<i>Prasinophytes</i> sp.	SFC	Harvey et al. 1997
Plantae	Chlorodendrophyceae	<i>Pseudoscourfieldia marina</i>	SFC	Harvey et al. 1997
Plantae	Chlorodendrophyceae	<i>Pterosperma cristatum</i>	SFC	Harvey et al. 1997
Plantae	Chlorodendrophyceae	<i>Pyramimonas</i> sp.	SFC	Harvey et al. 1997

Kingdom	Class	Genus/Species	Location¹	Source
Plantae	Conjugatophyceae	<i>Closterium</i> spp.	HB	Legendre and Simard 1979
Plantae	Florideophyceae	<i>Palmaria palmate</i>	FS, RB	Nunavut 2012
Plantae	Pyramimonadophyceae	<i>Halosphaera viridis</i>	HB	Legendre and Simard 1979
Plantae	Trebouxiophyceae	<i>Trochiscia</i> sp.	HB, HS	Bursa 1961a
Plantae	Ulvophyceae	<i>Acrosiphonia arcta</i>	FC	Lee 1980
Plantae	Ulvophyceae	<i>Codium fragile</i>	SB	Nunavut 2014
Plantae	Ulvophyceae	<i>Ulva prolifera</i>	SI	Lee 1980

¹SFC = South Foxe Channel; SI = Southampton Island; RB = Repulse Bay; FC = Foxe Channel: Stanley Harbour (northeastern coast of SI); RWS= Roes Welcome Sound; ES = Evans Strait; FS = Frozen Strait; SB = South Bay), FB = Foxe Basin, HB = Hudson Bay, and HS = Hudson Strait.

Zooplankton

Table 2 provides a list of taxa identified in or near the SI EBSA (Grainger 1959, 1962, Thomas 1999, Harvey et al. 2001). Copepoda and Amphipoda, particularly sympagic species, were the most diverse taxa.

Table 2. Zooplankton and ice fauna taxa.

Phylum	Order	Species	Location ¹	Source
Ctenophora	-	<i>Beroe cucumis</i>	HS, FB	Grainger 1962
Ctenophora	-	<i>Mertensia ovum</i>	HS, FB	Grainger 1962
Cnidaria	-	<i>Hydrozoan</i> sp.	SFC	Harvey et al. 2001
Cnidaria	-	<i>Cnidaria</i> sp. larvae	HB	Estrada et al. 2012
Cnidaria	-	<i>Aeginopsis laurenti</i>	HB	Estrada et al. 2012
Cnidaria	-	<i>Aglantha digitale</i>	FB, FC	Grainger 1959, 1962; Estrada et al. 2012
Cnidaria	-	<i>Bougainvillia superciliaris</i>	FB, FC	Grainger 1962
Cnidaria	-	<i>Sarsia tubulosa</i>	FB	Grainger 1962
Cnidaria	-	<i>Sarsia</i> sp.	HBS	Estrada et al. 2012
Cnidaria	-	<i>Tiaropsis multicirrata</i>	SW FB, NW FB	Grainger 1959, 1962
Mollusca	-	<i>Bivalvia</i> sp. larvae	HB	Estrada et al. 2012
Mollusca	-	<i>Clione limacine</i>	SFC, HB	Grainger 1962; Harvey et al. 2001; Estrada et al. 2012
Mollusca	-	<i>Limacina</i> sp.	SFC	Harvey et al. 2001
Mollusca	-	<i>Limacina helicina</i>	SFC, FC, SW FB, HB	Grainger 1962; Harvey et al. 2001; Estrada et al. 2012
Annelida	-	<i>Polychaete</i> sp.	SFC, HB	Harvey et al. 2001; Estrada et al. 2012
Annelida	-	<i>Tomopteris</i> sp.	HB	Estrada et al. 2012
Arthropoda	Amphipoda	<i>Gammaridae</i> sp.	HB	Estrada et al. 2012
Arthropoda	Amphipoda	<i>Hyperia galba</i>	SFC	Harvey et al. 2001
Arthropoda	Amphipoda	<i>Hyperia</i> sp.	HB	Estrada et al. 2012
Arthropoda	Amphipoda	<i>Hyperoche medusarum</i>	central FB	Grainger 1959
Arthropoda	Amphipoda	<i>Onisimus glacialis</i>	RB, SW FB	Grainger 1962
Arthropoda	Amphipoda	<i>Onisimus nansenii</i>	FS, SW FB	Grainger 1962
Arthropoda	Amphipoda	<i>Themisto abyssorum</i>	SFC	Grainger 1962; Harvey et al. 2001; Estrada et al. 2012

Phylum	Order	Species	Location ¹	Source
Arthropoda	Amphipoda	<i>Themisto compressa</i>	HB	Estrada et al. 2012
Arthropoda	Amphipoda	<i>Themisto gaudichaudi</i>	FC	Grainger 1962
Arthropoda	Amphipoda	<i>Themisto libellula</i>	SFC	Harvey et al. 2001; Estrada et al. 2012
Arthropoda	Copepoda	<i>Calanoid nauplii</i>	FC, FB	Grainger 1959, 1962; Thomas 1999
Arthropoda	Copepoda	<i>Acartia longiremis</i>	SFC, FC, SW FB, HB	Grainger 1962; Harvey et al. 2001; Estrada et al. 2012
Arthropoda	Copepoda	<i>Aetideidae</i> sp.	HB	Estrada et al. 2012
Arthropoda	Copepoda	<i>Calanus finmarchicus</i>	SFC, FC, SW FB	Grainger 1962; Harvey et al. 2001
Arthropoda	Copepoda	<i>Calanus glacialis</i>	FC, FB, HB	Grainger 1962; Thomas 1999; Harvey et al. 2001; Estrada et al. 2012
Arthropoda	Copepoda	<i>Calanus hyperboreus</i>	SFC, FC, SW FB, HB	Grainger 1962; Harvey et al. 2001; Estrada et al. 2012
Arthropoda	Copepoda	<i>Calanus finmarchicus</i>	HB	Estrada et al. 2012
Arthropoda	Copepoda	<i>Centropages hamatus</i>	SFC	Harvey et al. 2001
Arthropoda	Copepoda	<i>Euchaeta norvegica</i>	HB	Estrada et al. 2012
Arthropoda	Copepoda	<i>Harpacticoid</i> sp.	HB	Estrada et al. 2012
Arthropoda	Copepoda	<i>Metridia longa</i>	SFC, FC, SW FB, HB	Grainger 1962; Harvey et al. 2001; Estrada et al. 2012
Arthropoda	Copepoda	<i>Microcalanus pygmaeus</i>	FC, FB	Grainger 1962
Arthropoda	Copepoda	<i>Microcalanus</i> sp.	HB	Estrada et al. 2012
Arthropoda	Copepoda	<i>Metridia longa</i>	HB	Estrada et al. 2012
Arthropoda	Copepoda	<i>Pseudocalanus</i> sp.	SFC, HB	Harvey et al. 2001; Estrada et al. 2012
Arthropoda	Copepoda	<i>Pseudocalanus minutus</i>	FC, FB	Grainger 1959, 1962; Thomas 1999
Arthropoda	Copepoda	<i>Oithona similis</i>	FC, SW, HB, FB	Grainger 1962; Estrada et al. 2012
Arthropoda	Copepoda	<i>Oncaea borealis</i>	HB	Estrada et al. 2012
Arthropoda	Copepoda	<i>Triconia borealis</i>	FC, SW FB, SE FB	Grainger 1962
Arthropoda	Decapoda	<i>Decapod</i> sp. larvae	SFC	Harvey et al. 2001
Arthropoda	Decapoda	<i>Decapod</i> sp.	HB	Estrada et al. 2012
Arthropoda	Decapoda	<i>Pagurus</i> sp.	FB	Grainger 1959
Arthropoda	Euphausiacea	<i>Euphausiacean</i> sp.	SFC, HB	Harvey et al. 2001; Estrada et al. 2012
Arthropoda	Euphausiacea	<i>Thysanoessa raschii</i>	RB, SFC, FC, SW FB, HB	Grainger 1962; Harvey et al. 2001; Estrada et al. 2012

Phylum	Order	Species	Location ¹	Source
Arthropoda	Isopoda	<i>Isopod</i> sp.	SFC, HB	Harvey et al. 2001; Estrada et al. 2012
Arthropoda	Metacopina	<i>Ostracod</i> sp.	SFC	Harvey et al. 2001
Arthropoda	Mysida	<i>Meterythropros robusta</i>	HB	Estrada et al. 2012
Arthropoda	Mysida	<i>Mysis</i> sp.	SFC	Harvey et al. 2001
Arthropoda	Mysida	<i>Mysis mixta</i>	HB	Estrada et al. 2012
Arthropoda	Sessilia	<i>Cirripede</i> sp. larvae	SFC, FB, HB	Grainger 1962; Harvey et al. 2001; Estrada et al. 2012
Chaetognath	-	<i>Chaetognatha</i> larvae	HB	Estrada et al. 2012
Chaetognath	-	<i>Eukrohnia hamata</i>	HB	Estrada et al. 2012
Chaetognath	-	<i>Parasagitta elegans</i>	SFC, FB	Grainger 1959, 1962; Thomas 1999; Harvey et al. 2001
Chaetognath	-	<i>Sagitta elegans</i>	HB	Estrada et al. 2012
Chordata (Subphylum Tunicata)	-	<i>Fritillaria</i> sp.	HB	Estrada et al. 2012
Chordata (Subphylum Tunicata)	-	<i>Tunicate</i> sp. Larvae	FC	Grainger 1962
Chordata (Subphylum Tunicata)	-	<i>Oikopleura</i> sp.	SFC	Harvey et al. 2001; Estrada et al. 2012
Chordata (Subphylum Tunicata)	-	<i>Oikopleura</i> larvae	HB	Estrada et al. 2012
Chordata (Subphylum Tunicata)	-	<i>Oikopleura vanhoeffeni</i>	RB, FC	Grainger 1959, 1962

¹FC = Foxe Channel, FS = Frozen Strait, NW FB = northwest Foxe Basin, RB = Repulse Bay, SFC = South Foxe Channel, SW FB = southwest Foxe Basin, FB = Foxe Basin, HS, FB = Hudson Strait and Foxe Basin, and HB = Hudson Bay.

Benthic Community

Benthic taxa identified in or near marine waters of the SI EBSA are listed in Table 3 (Atkinson and Wacasey 1989a, b, Cadler 1970, and Nunavut 2012, 2014). A minimum of 430 taxa were identified in the area with amphipods, polychaetes, gastropods, hydrozoans, and bryozoans among the more diverse of the major taxa.

Table 3. Benthic and epibenthic macroinvertebrate taxa.

Phylum	Class (Order)	Species	Location ¹	Source
Porifera	-	<i>Porifera</i> sp.	RWS, FS, SFC, CI, FC	Atkinson and Wacasey 1989a, b
Porifera	-	<i>Haliclona varia</i>	CI	Atkinson and Wacasey 1989a
Cnidaria	Anthozoa	<i>Drifa glomerata</i>	CI	Atkinson and Wacasey 1989a
Cnidaria	Anthozoa	<i>Gersemia rubiformis</i>	SFC, FC	Atkinson and Wacasey 1989b
Cnidaria	Anthozoa	<i>Glandulactis spetsbergensis</i>	FC, CI, SW FB	Atkinson and Wacasey 1989a, b
Cnidaria	Anthozoa	<i>Halcampa arctica</i>	RB	Atkinson and Wacasey 1989b
Cnidaria	Anthozoa	<i>Hormathia digitata</i>	CI	Atkinson and Wacasey 1989a
Cnidaria	Anthozoa	<i>Hormathia nodosa</i>	CI, FC	Atkinson and Wacasey 1989a, b
Cnidaria	Anthozoa	<i>Stomphia coccinea</i>	CI, SFC, FC	Atkinson and Wacasey 1989a, b
Cnidaria	Anthozoa	<i>Urticina felina</i>	RB, RWS, CI, SFC, FC	Atkinson and Wacasey 1989a, b
Cnidaria	Hydrozoa	<i>Hydrozoan</i> sp.	RWS, CI	Atkinson and Wacasey 1989a
Cnidaria	Hydrozoa	<i>Abietinaria abietina</i>	CI	Calder 1970; Atkinson and Wacasey 1989a
Cnidaria	Hydrozoa	<i>Calycella syringa</i>	RWS, FS, CI, FC	Calder 1970; Atkinson and Wacasey 1989a, b
Cnidaria	Hydrozoa	<i>Campanularia crenata</i>	CI, FC	Calder 1970; Atkinson and Wacasey 1989a, b
Cnidaria	Hydrozoa	<i>Campanularia groenlandica</i>	CI, FC	Calder 1970; Atkinson and Wacasey 1989a, b
Cnidaria	Hydrozoa	<i>Campanularia volubilis</i>	RWS, FS, CI, FC	Calder 1970; Atkinson and Wacasey 1989a, b
Cnidaria	Hydrozoa	<i>Coryne pusilla</i>	FS	Atkinson and Wacasey 1989b
Cnidaria	Hydrozoa	<i>Cuspidella humilis</i>	CI	Calder 1970; Atkinson and Wacasey 1989a
Cnidaria	Hydrozoa	<i>Eudendrium arbuscula</i>	RWS	Atkinson and Wacasey 1989a
Cnidaria	Hydrozoa	<i>Eudendrium capillare</i>	RWS, CI	Atkinson and Wacasey 1989a
Cnidaria	Hydrozoa	<i>Gonothyraea loveni</i>	CI	Calder 1970; Atkinson and Wacasey 1989a
Cnidaria	Hydrozoa	<i>Grammaria abietina</i>	SFC, FC	Calder 1970; Atkinson and Wacasey 1989a, b

Phylum	Class (Order)	Species	Location ¹	Source
Cnidaria	Hydrozoa	<i>Halecium curvicaule</i>	SW FB	Calder 1970; Atkinson and Wacasey 1989b
Cnidaria	Hydrozoa	<i>Halecium groenlandicum</i>	RWS	Calder 1970; Atkinson and Wacasey 1989a
Cnidaria	Hydrozoa	<i>Halecium labrosum</i>	RWS	Calder 1970
Cnidaria	Hydrozoa	<i>Halecium minutum</i>	FS	Calder 1970; Atkinson and Wacasey 1989b
Cnidaria	Hydrozoa	<i>Halecium muricatum</i>	FS, CI, FC,	Calder 1970; Atkinson and Wacasey 1989a, b
Cnidaria	Hydrozoa	<i>Halecium speciosum</i>	CI	Calder 1970
Cnidaria	Hydrozoa	<i>Halecium undulatum</i>	CI, SFC	Calder 1970; Atkinson and Wacasey 1989a
Cnidaria	Hydrozoa	<i>Lafoea dumosa</i>	RWS, FS, CI, FC,	Calder 1970; Atkinson and Wacasey 1989a, b
Cnidaria	Hydrozoa	<i>Lafoeina maxima</i>	RWS, CI	Calder 1970; Atkinson and Wacasey 1989a
Cnidaria	Hydrozoa	<i>Obelia geniculata</i>	CI	Calder 1970; Atkinson and Wacasey 1989a
Cnidaria	Hydrozoa	<i>Orthopyxis integra</i>	RWS, CI, FC	Calder 1970; Atkinson and Wacasey 1989a
Cnidaria	Hydrozoa	<i>Rhizocaulus verticillatus</i>	FS, SFC, FC	Calder 1970; Atkinson and Wacasey 1989a, b
Cnidaria	Hydrozoa	<i>Sertularella pinnata</i>	CI	Calder 1970; Atkinson and Wacasey 1989a
Cnidaria	Hydrozoa	<i>Sertularella polyzonias</i>	CI	Calder 1970; Atkinson and Wacasey 1989a
Cnidaria	Hydrozoa	<i>Symplectoscyphus tricuspidatus</i>	RWS, CI, FC	Calder 1970; Atkinson and Wacasey 1989a, b
Cnidaria	Hydrozoa	<i>Sertularia mirabilis</i>	CI	Calder 1970; Atkinson and Wacasey 1989a
Cnidaria	Hydrozoa	<i>Sertularia plumosa</i>	RWS	Calder 1970; Atkinson and Wacasey 1989a
Cnidaria	Hydrozoa	<i>Sertularia robusta</i>	FS, CI	Calder 1970; Atkinson and Wacasey 1989a, b
Cnidaria	Hydrozoa	<i>Sertularia schmidtii</i>	RWS, FS, CI, FC	Calder 1970; Atkinson and Wacasey 1989a, b
Cnidaria	Hydrozoa	<i>Sertularia similis</i>	RWS, FS, CI, SFC, FC	Calder 1970; Atkinson and Wacasey 1989a, b
Cnidaria	Hydrozoa	<i>Tetrapoma quadridentatum</i>	RWS, CI, FC	Calder 1970; Atkinson and Wacasey 1989a, b
Cnidaria	Hydrozoa	<i>Thuiaria thuja</i>	FC	Calder 1970; Atkinson and Wacasey 1989b
Nematoda	-	<i>Nematode</i> sp.	RWS, FS, SFC, FC	Atkinson and Wacasey 1989a, b
Mollusca	Bivalvia	<i>Astarte borealis</i>	RB, SFC, FC, SW FB	Atkinson and Wacasey 1989a, b
Mollusca	Bivalvia	<i>Astarte montagui</i>	RB, SFC, FC, SW FB	Atkinson and Wacasey 1989a, b
Mollusca	Bivalvia	<i>Axinopsida orbiculata</i>	SFC	Atkinson and Wacasey 1989b
Mollusca	Bivalvia	<i>Chlamys islandica</i>	SFC, CI, CH	Atkinson and Wacasey 1989a, b; Nunavut 2012, 2014
Mollusca	Bivalvia	<i>Ciliatocardium ciliatum</i>	RB, CI, SFC	Atkinson and Wacasey 1989a, b

Phylum	Class (Order)	Species	Location ¹	Source
Mollusca	Bivalvia	<i>Crenella faba</i>	RB, CI, SFC, FC	Atkinson and Wacasey 1989a, b
Mollusca	Bivalvia	<i>Cyclocardia borealis</i>	SFC	Atkinson and Wacasey 1989b
Mollusca	Bivalvia	<i>Ennucula tenuis</i>	SFC, CI	Atkinson and Wacasey 1989a
Mollusca	Bivalvia	<i>Hiatella arctica</i>	RB, RWS, FS, CI, SFC, FC, CH	Atkinson and Wacasey 1989a, b
Mollusca	Bivalvia	<i>Limecola balthica</i>	CH	Atkinson and Wacasey 1989a
Mollusca	Bivalvia	<i>Lyonsia arenosa</i>	CI	Atkinson and Wacasey 1989a
Mollusca	Bivalvia	<i>Macoma calcarea</i>	SFC, FC	Atkinson and Wacasey 1989a, b
Mollusca	Bivalvia	<i>Macoma moesta</i>	RB, CI	Atkinson and Wacasey 1989a, b
Mollusca	Bivalvia	<i>Macoma torelli</i>	CI	Atkinson and Wacasey 1989a
Mollusca	Bivalvia	<i>Modiolus modiolus</i>	CH	Nunavut 2014
Mollusca	Bivalvia	<i>Musculus discors</i>	RB, RWS, FS, CI, SFC, FC, SW FB	Atkinson and Wacasey 1989a, b
Mollusca	Bivalvia	<i>Musculus niger</i>	CI, FC	Atkinson and Wacasey 1989a, b
Mollusca	Bivalvia	<i>Mya pseudoarenaria</i>	RB, SFC	Atkinson and Wacasey 1989b
Mollusca	Bivalvia	<i>Mya truncata</i>	FS, CI, SFC	Atkinson and Wacasey 1989a, b
Mollusca	Bivalvia	<i>Mytilus edulis</i>	CI, SFC, CH	Atkinson and Wacasey 1989a, b; Nunavut 2014
Mollusca	Bivalvia	<i>Nuculana minuta</i>	RB, CI, SFC, FC	Atkinson and Wacasey 1989a, b
Mollusca	Bivalvia	<i>Nuculana pernula</i>	RB, CI, SFC, FC	Atkinson and Wacasey 1989a, b
Mollusca	Bivalvia	<i>Periploma aleuticum</i>	CI	Atkinson and Wacasey 1989a
Mollusca	Bivalvia	<i>Portlandia arctica</i>	FS	Atkinson and Wacasey 1989b
Mollusca	Bivalvia	<i>Serripes groenlandicus</i>	RB, CI, SFC	Atkinson and Wacasey 1989a, b
Mollusca	Bivalvia	<i>Similipecten greenlandicus</i>	RB, CI, SFC	Atkinson and Wacasey 1989a, b
Mollusca	Bivalvia	<i>Thracia septentrionalis</i>	CI	Atkinson and Wacasey 1989a
Mollusca	Bivalvia	<i>Thyasira gouldi</i>	SFC, FC	Atkinson and Wacasey 1989a, b
Mollusca	Bivalvia	<i>Yoldia hyperborea</i>	CI, SFC	Atkinson and Wacasey 1989a
Mollusca	Bivalvia	<i>Yoldiella lenticula</i>	FS, SFC	Atkinson and Wacasey 1989a, b
Mollusca	Cephalopoda	<i>Gonatus fabricii</i>	CI, RB	Nunavut 2012, 2014
Mollusca	Gastropoda	<i>Admete viridula</i>	RB, SW FB	Atkinson and Wacasey 1989b
Mollusca	Gastropoda	<i>Ariadnaria borealis</i>	RB, SFC, SW FB	Atkinson and Wacasey 1989a, b

Phylum	Class (Order)	Species	Location ¹	Source
Mollusca	Gastropoda	<i>Boreocingula castanea</i>	CI	Atkinson and Wacasey 1989a
Mollusca	Gastropoda	<i>Boretrophon truncatus</i>	SFC, FC, SW FB	Atkinson and Wacasey 1989b
Mollusca	Gastropoda	<i>Buccinum belcheri</i>	RB	Atkinson and Wacasey 1989b
Mollusca	Gastropoda	<i>Buccinum ciliatum</i>	CI	Atkinson and Wacasey 1989a
Mollusca	Gastropoda	<i>Buccinum finmarkianum</i>	RWS	Atkinson and Wacasey 1989a
Mollusca	Gastropoda	<i>Buccinum glaciale</i>	SFC, FC, SW FB	Atkinson and Wacasey 1989b
Mollusca	Gastropoda	<i>Buccinum hydrophanum</i>	RB, FC, SW FB	Atkinson and Wacasey 1989b
Mollusca	Gastropoda	<i>Buccinum micropoma</i>	SW FB	Atkinson and Wacasey 1989b
Mollusca	Gastropoda	<i>Buccinum scalariforme</i>	CI	Atkinson and Wacasey 1989a
Mollusca	Gastropoda	<i>Buccinum undatum</i>	RB, SFC, SW FB	Atkinson and Wacasey 1989b
Mollusca	Gastropoda	<i>Colus holboelli</i>	CI	Atkinson and Wacasey 1989a
Mollusca	Gastropoda	<i>Colus islandicus</i>	RB, SW FB	Atkinson and Wacasey 1989b
Mollusca	Gastropoda	<i>Colus pubescens</i>	RB	Atkinson and Wacasey 1989b
Mollusca	Gastropoda	<i>Cryptonatica affinis</i>	SW FB	Atkinson and Wacasey 1989b
Mollusca	Gastropoda	<i>Curtitoma violacea</i>	RWS, SFC	Atkinson and Wacasey 1989a
Mollusca	Gastropoda	<i>Cylichna alba</i>	RB	Atkinson and Wacasey 1989b
Mollusca	Gastropoda	<i>Cylichnoides occultus</i>	RB	Atkinson and Wacasey 1989b
Mollusca	Gastropoda	<i>Euspira pallida</i>	RB, CI	Atkinson and Wacasey 1989a, b
Mollusca	Gastropoda	<i>Lacuna crassior</i>	SW FB	Atkinson and Wacasey 1989b
Mollusca	Gastropoda	<i>Lepeta caeca</i>	RB, CI, SFC, SW FB	Atkinson and Wacasey 1989a, b
Mollusca	Gastropoda	<i>Littorina saxatilis</i>	CI, SFC, CH	Atkinson and Wacasey 1989a, b
Mollusca	Gastropoda	<i>Margarites costalis</i>	RB, CI, SFC, SW FB	Atkinson and Wacasey 1989a, b
Mollusca	Gastropoda	<i>Margarites groenlandicus umbilicalis</i>	RB, RWS, CI, FC, SW FB	Atkinson and Wacasey 1989a, b
Mollusca	Gastropoda	<i>Margarites helicinus</i>	RB, CI, SFC, FC	Atkinson and Wacasey 1989a, b
Mollusca	Gastropoda	<i>Margarites olivaceus</i>	RB	Atkinson and Wacasey 1989b
Mollusca	Gastropoda	<i>Marsenina glabra</i>	FC, RWS	Atkinson and Wacasey 1989a, b
Mollusca	Gastropoda	<i>Neptunea despecta</i>	RWS, CI, SFC	Atkinson and Wacasey 1989a
Mollusca	Gastropoda	<i>Oenopota pyramidalis</i>	SFC	Atkinson and Wacasey 1989b

Phylum	Class (Order)	Species	Location ¹	Source
Mollusca	Gastropoda	<i>Onchidiopsis glacialis</i>	RB	Atkinson and Wacasey 1989b
Mollusca	Gastropoda	<i>Piliscus commodus</i>	RB, SW FB, RWS	Atkinson and Wacasey 1989a, b
Mollusca	Gastropoda	<i>Plicifusus kroeyeri</i>	RWS, CI, SFC	Atkinson and Wacasey 1989a
Mollusca	Gastropoda	<i>Puncturella noachina</i>	CI, SFC	Atkinson and Wacasey 1989a
Mollusca	Gastropoda	<i>Retusa obtusa</i>	SFC	Atkinson and Wacasey 1989b
Mollusca	Gastropoda	<i>Scabrotrophon fabricii</i>	RB, RWS, FS, CI, SFC, FC, SW FB	Atkinson and Wacasey 1989a, b
Mollusca	Gastropoda	<i>Tachyrhynchus reticulatus</i>	RB, CI, SFC	Atkinson and Wacasey 1989a, b
Mollusca	Gastropoda	<i>Testudinalia testudinalis</i>	SFC, CI, CH	Atkinson and Wacasey 1989a, b; Nunavut 2014
Mollusca	Gastropoda	<i>Trichotropis bicarinata</i>	RB, SW FB	Atkinson and Wacasey 1989b
Mollusca	Gastropoda	<i>Trichotropis conica</i>	CI, SW FB	Atkinson and Wacasey 1989a, b
Mollusca	Gastropoda	<i>Velutina plicatilis</i>	RB, SW FB	Atkinson and Wacasey 1989b
Mollusca	Gastropoda	<i>Velutina undata</i>	RB, RWS, SW FB	Atkinson and Wacasey 1989a, b
Mollusca	Gastropoda	<i>Velutina velutina</i>	RB, RWS, SFC, FC	Atkinson and Wacasey 1989a, b
Mollusca	Gastropoda	<i>Volutopsius norwegicus</i>	RWS, SW FB	Atkinson and Wacasey 1989a, b
Mollusca	Polyplacophora	<i>Stenosemus albus</i>	CI, SFC, FC	Atkinson and Wacasey 1989a, b
Mollusca	Polyplacophora	<i>Tonicella marmorea</i>	RWS, CI, SFC	Atkinson and Wacasey 1989a
Sipuncula	-	<i>Sipunculid</i> sp.	RWS, CI	Atkinson and Wacasey 1989a, b
Sipuncula	-	<i>Golfingia</i> sp.	CI	Atkinson and Wacasey 1989a
Sipuncula	-	<i>Nephasoma lilljeborgi</i>	CI	Atkinson and Wacasey 1989a
Sipuncula	-	<i>Phascolion strombus strombus</i>	FC	Atkinson and Wacasey 1989b
Annelida	Polychaeta	<i>Ampharete acutifrons</i>	SFC	Atkinson and Wacasey 1989b
Annelida	Polychaeta	<i>Ampharete goesi</i>	SFC	Atkinson and Wacasey 1989b
Annelida	Polychaeta	<i>Ampharete sibirica</i>	SFC	Atkinson and Wacasey 1989b
Annelida	Polychaeta	<i>Amphitrite cirrata</i>	SFC	Atkinson and Wacasey 1989a
Annelida	Polychaeta	<i>Aricidea suecica</i>	SFC	Atkinson and Wacasey 1989b
Annelida	Polychaeta	<i>Artacama probiscidea</i>	SFC	Atkinson and Wacasey 1989a
Annelida	Polychaeta	<i>Bispira crassicornis</i>	SFC	Atkinson and Wacasey 1989a
Annelida	Polychaeta	<i>Capitella capitata</i>	SFC	Atkinson and Wacasey 1989b

Phylum	Class (Order)	Species	Location ¹	Source
Annelida	Polychaeta	<i>Chaetozone setosa</i>	SFC	Atkinson and Wacasey 1989a
Annelida	Polychaeta	<i>Chaetozone</i> sp.	SFC	Atkinson and Wacasey 1989a
Annelida	Polychaeta	<i>Chitinopoma serrula</i>	SFC, FC	Atkinson and Wacasey 1989a, b
Annelida	Polychaeta	<i>Chone</i> sp.	FS, CI, SFC, FC	Atkinson and Wacasey 1989a, b
Annelida	Polychaeta	<i>Circeis spirillum</i>	RB, SFC	Atkinson and Wacasey 1989a, b
Annelida	Polychaeta	<i>Cistenides granulata</i>	SFC	Atkinson and Wacasey 1989b
Annelida	Polychaeta	<i>Cistenides hyperborea</i>	FC	Atkinson and Wacasey 1989b
Annelida	Polychaeta	<i>Dipolydora caulleryi</i>	SFC	Atkinson and Wacasey 1989b
Annelida	Polychaeta	<i>Dipolydora quadrilobata</i>	SFC	Atkinson and Wacasey 1989a
Annelida	Polychaeta	<i>Eteone flava</i>	SFC	Atkinson and Wacasey 1989a
Annelida	Polychaeta	<i>Eteone longa</i>	CI, SFC	Atkinson and Wacasey 1989a
Annelida	Polychaeta	<i>Euchone papillosa</i>	SFC	Atkinson and Wacasey 1989b
Annelida	Polychaeta	<i>Eunoe nodosa</i>	RB	Atkinson and Wacasey 1989b
Annelida	Polychaeta	<i>Eusyllis blomstrandii</i>	RWS, FS, SFC	Atkinson and Wacasey 1989b
Annelida	Polychaeta	<i>Exogone verugeta</i>	SFC	Atkinson and Wacasey 1989b
Annelida	Polychaeta	<i>Galathowenia oculata</i>	CI	Atkinson and Wacasey 1989a
Annelida	Polychaeta	<i>Gattyana cirrhosa</i>	CI, SFC	Atkinson and Wacasey 1989a
Annelida	Polychaeta	<i>Harmothoe extenuata</i>	RB, RWS, SFC	Atkinson and Wacasey 1989a, b
Annelida	Polychaeta	<i>Harmothoe imbricata</i>	RWS, CI, SFC	Atkinson and Wacasey 1989a, b
Annelida	Polychaeta	<i>Lanassa venusta</i>	SFC	Atkinson and Wacasey 1989b
Annelida	Polychaeta	<i>Lysippe labiata</i>	SFC	Atkinson and Wacasey 1989b
Annelida	Polychaeta	<i>Maldane sarsi</i>	SFC	Atkinson and Wacasey 1989a
Annelida	Polychaeta	<i>Micronephthys minuta</i>	SFC	Atkinson and Wacasey 1989a
Annelida	Polychaeta	<i>Myriochele heeri</i>	CI	Atkinson and Wacasey 1989a
Annelida	Polychaeta	<i>Nereimyra aphroditoides</i>	SFC	Atkinson and Wacasey 1989b
Annelida	Polychaeta	<i>Nereis pelagica</i>	RWS, FS	Atkinson and Wacasey 1989a, b
Annelida	Polychaeta	<i>Nereis</i> sp.	SFC	Atkinson and Wacasey 1989b
Annelida	Polychaeta	<i>Nereis zonata</i>	SFC	Atkinson and Wacasey 1989a
Annelida	Polychaeta	<i>Nicolea zostericola</i>	SFC	Atkinson and Wacasey 1989a, b

Phylum	Class (Order)	Species	Location ¹	Source
Annelida	Polychaeta	<i>Nothria conchylega</i>	CI	Atkinson and Wacasey 1989a
Annelida	Polychaeta	<i>Ophelia limacina</i>	SFC, CI	Atkinson and Wacasey 1989a
Annelida	Polychaeta	<i>Ophelina breviata</i>	SFC	Atkinson and Wacasey 1989b
Annelida	Polychaeta	<i>Owenia fusiformis</i>	CI	Atkinson and Wacasey 1989a
Annelida	Polychaeta	<i>Paraonis</i> sp.	SFC	Atkinson and Wacasey 1989b
Annelida	Polychaeta	<i>Pectinaria</i> sp.	CH	Atkinson and Wacasey 1989a
Annelida	Polychaeta	<i>Petaloproctus tenuis</i>	SFC	Atkinson and Wacasey 1989a
Annelida	Polychaeta	<i>Pholoe minuta</i>	FS, SFC, FC	Atkinson and Wacasey 1989a, b
Annelida	Polychaeta	<i>Phyllodoce mucosa</i>	SFC	Atkinson and Wacasey 1989b
Annelida	Polychaeta	<i>Pionosyllis compacta</i>	FS, SFC	Atkinson and Wacasey 1989a, b
Annelida	Polychaeta	<i>Polycirrus medusa</i>	SFC	Atkinson and Wacasey 1989b
Annelida	Polychaeta	<i>Praxillella praetermissa</i>	SFC	Atkinson and Wacasey 1989b
Annelida	Polychaeta	<i>Prionospio cirrifera</i>	SFC	Atkinson and Wacasey 1989b
Annelida	Polychaeta	<i>Pygospio elegans</i>	RB, RWS	Atkinson and Wacasey 1989a, b
Annelida	Polychaeta	<i>Sabellides octocirrata</i>	SFC	Atkinson and Wacasey 1989a
Annelida	Polychaeta	<i>Scalibregma inflatum</i>	SFC	Atkinson and Wacasey 1989a, b
Annelida	Polychaeta	<i>Scoletoma fragilis</i>	SFC	Atkinson and Wacasey 1989b
Annelida	Polychaeta	<i>Scoloplos armiger</i>	SFC	Atkinson and Wacasey 1989a, b
Annelida	Polychaeta	<i>Sphaerodoropsis minuta</i>	SFC	Atkinson and Wacasey 1989b
Annelida	Polychaeta	<i>Spirorbis</i> sp.	SFC	Atkinson and Wacasey 1989a
Annelida	Polychaeta	<i>Syllis cornuta</i>	SFC, FC	Atkinson and Wacasey 1989a, b
Annelida	Polychaeta	<i>Syllis fasciata</i>	RWS, FS	Atkinson and Wacasey 1989a, b
Annelida	Polychaeta	<i>Terebellides stroemii</i>	SFC	Atkinson and Wacasey 1989a
Annelida	Polychaeta	<i>Tharyx acutus</i>	SFC, CI	Atkinson and Wacasey 1989a
Annelida	Polychaeta	<i>Thelepus cincinnatus</i>	RWS, SFC	Atkinson and Wacasey 1989a, b
Nemertea	-	<i>Nemertea</i> sp.	FS, CI, SFC	Atkinson and Wacasey 1989a, b
Arthropoda	Malacostraca (Amphipoda)	<i>Acanthonotozoma</i> sp.	SW FB	Atkinson and Wacasey 1989b
Arthropoda	Malacostraca (Amphipoda)	<i>Acanthonotozoma serratum</i>	FC, SW FB	Atkinson and Wacasey 1989b

Phylum	Class (Order)	Species	Location ¹	Source
Arthropoda	Malacostraca (Amphipoda)	<i>Acanthostepheia malmgreni</i>	CI	Atkinson and Wacasey 1989a
Arthropoda	Malacostraca (Amphipoda)	<i>Aeginina longicornis</i>	RWS, CI, FC	Atkinson and Wacasey 1989a, b
Arthropoda	Malacostraca (Amphipoda)	<i>Ampelisca eschrichti</i>	CI, SFC	Atkinson and Wacasey 1989a
Arthropoda	Malacostraca (Amphipoda)	<i>Anonyx laticoxae</i>	SFC, CI	Atkinson and Wacasey 1989a
Arthropoda	Malacostraca (Amphipoda)	<i>Anonyx lilljeborgii</i>	CI	Atkinson and Wacasey 1989a
Arthropoda	Malacostraca (Amphipoda)	<i>Anonyx makarovi</i>	CI	Atkinson and Wacasey 1989a
Arthropoda	Malacostraca (Amphipoda)	<i>Anonyx nugax</i>	RB, RWS, CI, SFC, FC, SW FB	Atkinson and Wacasey 1989a, b
Arthropoda	Malacostraca (Amphipoda)	<i>Anonyx sarsi</i>	CI	Atkinson and Wacasey 1989a
Arthropoda	Malacostraca (Amphipoda)	<i>Apherusa glacialis</i>	SFC	Atkinson and Wacasey 1989b
Arthropoda	Malacostraca (Amphipoda)	<i>Apherusa megalops</i>	RB, CI	Atkinson and Wacasey 1989a, b
Arthropoda	Malacostraca (Amphipoda)	<i>Aristias tumidus</i>	CI	Atkinson and Wacasey 1989a
Arthropoda	Malacostraca (Amphipoda)	<i>Arrhis phyllonyx</i>	CI	Atkinson and Wacasey 1989a
Arthropoda	Malacostraca (Amphipoda)	<i>Atylus carinatus</i>	RB, CI	Atkinson and Wacasey 1989a, b
Arthropoda	Malacostraca (Amphipoda)	<i>Calliopius laeviusculus</i>	SFC	Atkinson and Wacasey 1989a, b
Arthropoda	Malacostraca (Amphipoda)	<i>Caprella septentrionalis</i>	CI, SFC, FC	Atkinson and Wacasey 1989a, b
Arthropoda	Malacostraca (Amphipoda)	<i>Dyopedos hirticornis</i>	CI	Atkinson and Wacasey 1989a
Arthropoda	Malacostraca (Amphipoda)	<i>Erichthonius tolli</i>	RB, RWS, FS, CI, FC, SW FB	Atkinson and Wacasey 1989a, b
Arthropoda	Malacostraca (Amphipoda)	<i>Eusirus cuspidatus</i>	SFC	Atkinson and Wacasey 1989b
Arthropoda	Malacostraca (Amphipoda)	<i>Gammaropsis melanops</i>	CI, SFC	Atkinson and Wacasey 1989a, b
Arthropoda	Malacostraca (Amphipoda)	<i>Gammaropsis maculata</i>	RWS, FS	Atkinson and Wacasey 1989a, b
Arthropoda	Malacostraca (Amphipoda)	<i>Gammarus</i> sp.	CI	Atkinson and Wacasey 1989a
Arthropoda	Malacostraca (Amphipoda)	<i>Gammarus oceanicus</i>	RB, CI, SFC, CH	Atkinson and Wacasey 1989a, b
Arthropoda	Malacostraca (Amphipoda)	<i>Gammarus setosus</i>	RB, SFC, FC, CI, CH	Atkinson and Wacasey 1989a, b
Arthropoda	Malacostraca (Amphipoda)	<i>Gammarus wilkitzkii</i>	CI, SFC	Atkinson and Wacasey 1989a
Arthropoda	Malacostraca (Amphipoda)	<i>Halirages fulvocinctus</i>	RWS, FC	Atkinson and Wacasey 1989b
Arthropoda	Malacostraca (Amphipoda)	<i>Haploops setosa</i>	CI	Atkinson and Wacasey 1989a
Arthropoda	Malacostraca (Amphipoda)	<i>Haploops tubicola</i>	CI, SFC	Atkinson and Wacasey 1989a, b
Arthropoda	Malacostraca (Amphipoda)	<i>Ischyrocerus</i> sp.	RWS	Atkinson and Wacasey 1989a, b

Phylum	Class (Order)	Species	Location ¹	Source
Arthropoda	Malacostraca (Amphipoda)	<i>Ischyrocerus anguipes</i>	CI, SFC	Atkinson and Wacasey 1989a, b
Arthropoda	Malacostraca (Amphipoda)	<i>Ischyrocerus commensalis</i>	CI	Atkinson and Wacasey 1989a
Arthropoda	Malacostraca (Amphipoda)	<i>Ischyrocerus latipes</i>	CI	Atkinson and Wacasey 1989a
Arthropoda	Malacostraca (Amphipoda)	<i>Ischyrocerus megacheir</i>	CI	Atkinson and Wacasey 1989a, b
Arthropoda	Malacostraca (Amphipoda)	<i>Ischyrocerus stephenseni</i>	FS	Atkinson and Wacasey 1989b
Arthropoda	Malacostraca (Amphipoda)	<i>Melita</i> sp.	SW FB	Atkinson and Wacasey 1989b
Arthropoda	Malacostraca (Amphipoda)	<i>Mesometopa neglecta</i>	FS, FC	Atkinson and Wacasey 1989b
Arthropoda	Malacostraca (Amphipoda)	<i>Metopa bruzelii</i>	FS, FC	Atkinson and Wacasey 1989b
Arthropoda	Malacostraca (Amphipoda)	<i>Metopa clypeata</i>	RWS	Atkinson and Wacasey 1989a
Arthropoda	Malacostraca (Amphipoda)	<i>Metopa glacialis</i>	RWS, CI	Atkinson and Wacasey 1989a
Arthropoda	Malacostraca (Amphipoda)	<i>Metopa norvegica</i>	FC	Atkinson and Wacasey 1989b
Arthropoda	Malacostraca (Amphipoda)	<i>Metopa propinqua</i>	FC	Atkinson and Wacasey 1989b
Arthropoda	Malacostraca (Amphipoda)	<i>Metopa robusta</i>	CI, FC	Atkinson and Wacasey 1989a, b
Arthropoda	Malacostraca (Amphipoda)	<i>Metopa sinuata</i>	FC	Atkinson and Wacasey 1989b
Arthropoda	Malacostraca (Amphipoda)	<i>Metopella longimana</i>	FC	Atkinson and Wacasey 1989b
Arthropoda	Malacostraca (Amphipoda)	<i>Metopelloides zernovi</i>	CI	Atkinson and Wacasey 1989a
Arthropoda	Malacostraca (Amphipoda)	<i>Monoculodes borealis</i>	RB	Atkinson and Wacasey 1989b
Arthropoda	Malacostraca (Amphipoda)	<i>Monoculodes latimanus</i>	RB	Atkinson and Wacasey 1989b
Arthropoda	Malacostraca (Amphipoda)	<i>Monoculodes longirostris</i>	CI	Atkinson and Wacasey 1989a
Arthropoda	Malacostraca (Amphipoda)	<i>Monoculopsis longicornis</i>	RB	Atkinson and Wacasey 1989b
Arthropoda	Malacostraca (Amphipoda)	<i>Monoporeia affinis</i>	CH	Atkinson and Wacasey 1989a
Arthropoda	Malacostraca (Amphipoda)	<i>Neopleustes pulchellus</i>	CI	Atkinson and Wacasey 1989a
Arthropoda	Malacostraca (Amphipoda)	<i>Nototropis smitti</i>	RB, CI	Atkinson and Wacasey 1989a, b
Arthropoda	Malacostraca (Amphipoda)	<i>Odius carinatus</i>	SFC	Atkinson and Wacasey 1989a
Arthropoda	Malacostraca (Amphipoda)	<i>Oediceros saginatus</i>	CI	Atkinson and Wacasey 1989a
Arthropoda	Malacostraca (Amphipoda)	<i>Onisimus edwardsii</i>	SFC	Atkinson and Wacasey 1989a
Arthropoda	Malacostraca (Amphipoda)	<i>Onisimus glacialis</i>	CI, SFC	Atkinson and Wacasey 1989a
Arthropoda	Malacostraca (Amphipoda)	<i>Onisimus litoralis</i>	RB, CI, SFC, FC,	Atkinson and Wacasey 1989a, b
Arthropoda	Malacostraca (Amphipoda)	<i>Onisimus nanseni</i>	CI, SFC, FC	Atkinson and Wacasey 1989a, b

Phylum	Class (Order)	Species	Location ¹	Source
Arthropoda	Malacostraca (Amphipoda)	<i>Onisimus normani</i>	CI	Atkinson and Wacasey 1989a
Arthropoda	Malacostraca (Amphipoda)	<i>Onisimus plautus</i>	RWS, CI	Atkinson and Wacasey 1989a
Arthropoda	Malacostraca (Amphipoda)	<i>Opisa eschrichti</i>	CI	Atkinson and Wacasey 1989a
Arthropoda	Malacostraca (Amphipoda)	<i>Oradarea longimana</i>	SFC	Atkinson and Wacasey 1989a
Arthropoda	Malacostraca (Amphipoda)	<i>Orchomene groenlandica</i>	SFC	Atkinson and Wacasey 1989a
Arthropoda	Malacostraca (Amphipoda)	<i>Orchomene macroserrata</i>	SFC, SW FB	Atkinson and Wacasey 1989a, b
Arthropoda	Malacostraca (Amphipoda)	<i>Orchomene minuta</i>	RB, SFC	Atkinson and Wacasey 1989a, b
Arthropoda	Malacostraca (Amphipoda)	<i>Orchomene pinguis</i>	SFC	Atkinson and Wacasey 1989a
Arthropoda	Malacostraca (Amphipoda)	<i>Paramphithoe hystrix</i>	RB, RWS, CI, SFC	Atkinson and Wacasey 1989a, b
Arthropoda	Malacostraca (Amphipoda)	<i>Parapleustes assimilis</i>	CI, FC	Atkinson and Wacasey 1989a, b
Arthropoda	Malacostraca (Amphipoda)	<i>Parapleustes bicuspis</i>	FC	Atkinson and Wacasey 1989b
Arthropoda	Malacostraca (Amphipoda)	<i>Pardalisca cuspidata</i>	RWS	Atkinson and Wacasey 1989a
Arthropoda	Malacostraca (Amphipoda)	<i>Paroediceros lynceus</i>	RB, CI	Atkinson and Wacasey 1989a, b
Arthropoda	Malacostraca (Amphipoda)	<i>Paroediceros propinquus</i>	CI	Atkinson and Wacasey 1989a
Arthropoda	Malacostraca (Amphipoda)	<i>Pleustes panoplus</i>	RWS	Atkinson and Wacasey 1989a
Arthropoda	Malacostraca (Amphipoda)	<i>Pleusymtes pulchella</i>	CI	Atkinson and Wacasey 1989a
Arthropoda	Malacostraca (Amphipoda)	<i>Pontogeneia inermis</i>	RB, SFC	Atkinson and Wacasey 1989a, b
Arthropoda	Malacostraca (Amphipoda)	<i>Protomedeia grandimana</i>	CI	Atkinson and Wacasey 1989a
Arthropoda	Malacostraca (Amphipoda)	<i>Rhachotropis aculeata</i>	SW FB	Atkinson and Wacasey 1989b
Arthropoda	Malacostraca (Amphipoda)	<i>Rhachotropis oculata</i>	RWS, SFC	Atkinson and Wacasey 1989a
Arthropoda	Malacostraca (Amphipoda)	<i>Rozinante fragilis</i>	FS	Atkinson and Wacasey 1989b
Arthropoda	Malacostraca (Amphipoda)	<i>Socarnes bidenticulatus</i>	FS, CI, FC	Atkinson and Wacasey 1989a, b
Arthropoda	Malacostraca (Amphipoda)	<i>Socarnes vahli</i>	SFC, SW FB	Atkinson and Wacasey 1989a, b
Arthropoda	Malacostraca (Amphipoda)	<i>Stegocephalus inflatus</i>	RB, RWS, CI, SW FB	Atkinson and Wacasey 1989a, b
Arthropoda	Malacostraca (Amphipoda)	<i>Tryphosella</i> sp.	FC, SW FB	Atkinson and Wacasey 1989b
Arthropoda	Malacostraca (Amphipoda)	<i>Tryphosella orchomenoides</i>	RWS	Atkinson and Wacasey 1989a
Arthropoda	Malacostraca (Amphipoda)	<i>Unciola leucopis</i>	RB	Atkinson and Wacasey 1989b
Arthropoda	Malacostraca (Amphipoda)	<i>Weyprechtia pinguis</i>	RB	Atkinson and Wacasey 1989b
Arthropoda	Malacostraca (Cumacea)	<i>Brachydiastylis resima</i>	RB	Atkinson and Wacasey 1989b

Phylum	Class (Order)	Species	Location ¹	Source
Arthropoda	Malacostraca (Cumacea)	<i>Campylaspis rubicunda</i>	FC	Atkinson and Wacasey 1989b
Arthropoda	Malacostraca (Cumacea)	<i>Cumella</i> sp.	SFC	Atkinson and Wacasey 1989b
Arthropoda	Malacostraca (Cumacea)	<i>Diastylis goodsiri</i>	RB, CI, SFC	Atkinson and Wacasey 1989a, b
Arthropoda	Malacostraca (Cumacea)	<i>Diastylis rathkei</i>	SFC	Atkinson and Wacasey 1989a
Arthropoda	Malacostraca (Cumacea)	<i>Diastylis scorpioides</i>	RB, CI	Atkinson and Wacasey 1989a, b
Arthropoda	Malacostraca (Cumacea)	<i>Diastylis spinulosa</i>	RB	Atkinson and Wacasey 1989b
Arthropoda	Malacostraca (Cumacea)	<i>Platysympus typicus</i>	SFC	Atkinson and Wacasey 1989b
Arthropoda	Malacostraca (Decapoda)	<i>Argis dentata</i>	CI, SFC, FC	Atkinson and Wacasey 1989a, b
Arthropoda	Malacostraca (Decapoda)	<i>Chionoecetes opilio</i>	CH	Nunavut 2014
Arthropoda	Malacostraca (Decapoda)	<i>Eualus fabricii</i>	RWS, CI, SFC	Atkinson and Wacasey 1989a
Arthropoda	Malacostraca (Decapoda)	<i>Eualus gaimardi</i>	RWS, CI, SFC, SW FB	Atkinson and Wacasey 1989a, b
Arthropoda	Malacostraca (Decapoda)	<i>Eualus gaimardi belcheri</i>	CI, SW FB	Atkinson and Wacasey 1989a, b
Arthropoda	Malacostraca (Decapoda)	<i>Hyas coarctatus</i>	SFC, CH	Atkinson and Wacasey 1989a, b; Nunavut 2014
Arthropoda	Malacostraca (Decapoda)	<i>Lebbeus groenlandicus</i>	RWS, CI, SFC, FC, SW FB	Atkinson and Wacasey 1989a, b
Arthropoda	Malacostraca (Decapoda)	<i>Lebbeus microceros</i>	SW FB	Atkinson and Wacasey 1989b
Arthropoda	Malacostraca (Decapoda)	<i>Lebbeus polaris</i>	RB, RWS, FS, CI, SFC, FC, SW FB	Atkinson and Wacasey 1989a, b
Arthropoda	Malacostraca (Decapoda)	<i>Pagurus bernhardus</i>	CH, RB	Nunavut 2012, 2014
Arthropoda	Malacostraca (Decapoda)	<i>Pagurus pubescens</i>	RWS, CI	Atkinson and Wacasey 1989a, b
Arthropoda	Malacostraca (Decapoda)	<i>Pandalus borealis</i>	CH, RB	Nunavut 2012, 2014
Arthropoda	Malacostraca (Decapoda)	<i>Pandalus montagui</i>	RWS, CI	Atkinson and Wacasey 1989a
Arthropoda	Malacostraca (Decapoda)	<i>Sabinea septemcarinata</i>	RWS, CI, FC, SW FB	Atkinson and Wacasey 1989a, b
Arthropoda	Malacostraca (Decapoda)	<i>Sclerocrangon boreas</i>	CI, SFC, SW FB	Atkinson and Wacasey 1989a, b
Arthropoda	Malacostraca (Decapoda)	<i>Spirontocaris phippii</i>	RWS, CI, SFC, FC, SW FB	Atkinson and Wacasey 1989a, b
Arthropoda	Malacostraca (Decapoda)	<i>Spirontocaris spinus</i>	RWS, CI, SFC, FC	Atkinson and Wacasey 1989a, b
Arthropoda	Malacostraca (Euphausiacea)	<i>Meganyctiphanes norvegica</i>	CI	Nunavut 2014
Arthropoda	Malacostraca (Isopoda)	<i>Isopod</i> sp.	CI	Atkinson and Wacasey 1989a
Arthropoda	Malacostraca (Isopoda)	<i>Arcturus baffini</i>	RB, RWS, FS, CI, SW FB	Atkinson and Wacasey 1989a, b

Phylum	Class (Order)	Species	Location ¹	Source
Arthropoda	Malacostraca (Isopoda)	<i>Calathura brachiata</i>	FS	Atkinson and Wacasey 1989b
Arthropoda	Malacostraca (Isopoda)	<i>Janiralata tricornis</i>	FC	Atkinson and Wacasey 1989b
Arthropoda	Malacostraca (Isopoda)	<i>Munnopsis typica</i>	CI	Atkinson and Wacasey 1989a
Arthropoda	Malacostraca (Isopoda)	<i>Munnopsurus giganteus</i>	FS	Atkinson and Wacasey 1989b
Arthropoda	Malacostraca (Isopoda)	<i>Saduria sabini</i>	RB, RWS, CI, SFC, FC, SW FB	Atkinson and Wacasey 1989a, b
Arthropoda	Malacostraca (Isopoda)	<i>Synidotea marmorata</i>	RB, CI	Atkinson and Wacasey 1989a, b
Arthropoda	Malacostraca (Leptostraca)	<i>Nebalia bipes</i>	SFC	Atkinson and Wacasey 1989b
Arthropoda	Malacostraca (Metacopina)	<i>Celtia quadridentata</i>	RWS	Atkinson and Wacasey 1989a
Arthropoda	Malacostraca (Metacopina)	<i>Philomedes brenda</i>	SFC	Atkinson and Wacasey 1989b
Arthropoda	Malacostraca (Pantopoda)	<i>Boreonymphon abyssorum</i>	RB	Atkinson and Wacasey 1989b
Arthropoda	Malacostraca (Pantopoda)	<i>Boreonymphon robustum</i>	CI	Atkinson and Wacasey 1989a, b
Arthropoda	Malacostraca (Pantopoda)	<i>Nymphon elegans</i>	RB	Atkinson and Wacasey 1989b
Arthropoda	Malacostraca (Pantopoda)	<i>Nymphon hirtipes</i>	RB, FS, CI, SW FB	Atkinson and Wacasey 1989a, b
Arthropoda	Malacostraca (Pantopoda)	<i>Nymphon longitarse</i>	SFC	Atkinson and Wacasey 1989a
Arthropoda	Malacostraca (Pantopoda)	<i>Nymphon serratum</i>	RB, CI	Atkinson and Wacasey 1989a, b
Arthropoda	Malacostraca (Pantopoda)	<i>Nymphon stroemi</i>	CI	Atkinson and Wacasey 1989a
Arthropoda	Malacostraca (Pantopoda)	<i>Pseudopallene circularis</i>	SFC	Atkinson and Wacasey 1989a
Arthropoda	Malacostraca (Sessilia)	<i>Balanus balanus</i>	RB, RWS, FS, CI, SFC, FC	Atkinson and Wacasey 1989a, b
Arthropoda	Malacostraca (Sessilia)	<i>Balanus crenatus</i>	RB, CI, SFC, SW FB	Atkinson and Wacasey 1989a, b
Arthropoda	Malacostraca (Sessilia)	<i>Semibalanus balanoides</i>	RB, FS, CI, SFC, FC, SW FB	Atkinson and Wacasey 1989a, b
Arthropoda	Malacostraca (Sessilia)	<i>Tarasovium cornutum</i>	FS, FC	Atkinson and Wacasey 1989b
Bryozoa	-	<i>Bryozoa</i> sp.	RWS, CI	Atkinson and Wacasey 1989a
Bryozoa	-	<i>Aquiloniella scabra</i>	CI	Atkinson and Wacasey 1989a
Bryozoa	-	<i>Arctonula arctica</i>	RWS, FC	Atkinson and Wacasey 1989a, b
Bryozoa	-	<i>Bidenkapia spitsbergensis</i>	RWS, FS	Atkinson and Wacasey 1989a, b
Bryozoa	-	<i>Caberea ellisi</i>	SFC	Atkinson and Wacasey 1989a
Bryozoa	-	<i>Callopora craticula</i>	CI	Atkinson and Wacasey 1989a
Bryozoa	-	<i>Callopora lineata</i>	FS	Atkinson and Wacasey 1989b

Phylum	Class (Order)	Species	Location ¹	Source
Bryozoa	-	<i>Cauloramphus cymbaeformis</i>	CI	Atkinson and Wacasey 1989a
Bryozoa	-	<i>Cellepora</i> sp.	FC	Atkinson and Wacasey 1989b
Bryozoa	-	<i>Celleporella hyalina</i>	CI	Atkinson and Wacasey 1989a
Bryozoa	-	<i>Celleporina surcularis</i>	RWS, FS, CI, FC, SW FB	Atkinson and Wacasey 1989a, b
Bryozoa	-	<i>Celleporina ventricosa</i>	CI, FC	Atkinson and Wacasey 1989a, b
Bryozoa	-	<i>Cheilopora sincera</i>	FS, SW FB	Atkinson and Wacasey 1989b
Bryozoa	-	<i>Cystisella elegantula</i>	RWS	Atkinson and Wacasey 1989a
Bryozoa	-	<i>Cystisella saccata</i>	RWS, SFC	Atkinson and Wacasey 1989a
Bryozoa	-	<i>Dendrobeatia murrayana</i>	RWS, CI	Atkinson and Wacasey 1989a
Bryozoa	-	<i>Diplosolen obelium</i>	SW FB	Atkinson and Wacasey 1989b
Bryozoa	-	<i>Disporella hispida</i>	CI	Atkinson and Wacasey 1989a
Bryozoa	-	<i>Doryporella spathulifera</i>	CI	Atkinson and Wacasey 1989a
Bryozoa	-	<i>Escharella abyssicola</i>	SFC	Atkinson and Wacasey 1989b
Bryozoa	-	<i>Escharella connectens</i>	FC	Atkinson and Wacasey 1989b
Bryozoa	-	<i>Escharella ventricosa</i>	CI	Atkinson and Wacasey 1989a
Bryozoa	-	<i>Escharoides jacksonii</i>	RB, SW FB	Atkinson and Wacasey 1989b
Bryozoa	-	<i>Eucratea loricata</i>	RWS, FS	Atkinson and Wacasey 1989a, b
Bryozoa	-	<i>Exidmonea atlantica</i>	FS	Atkinson and Wacasey 1989b
Bryozoa	-	<i>Hippoporella hippopus</i>	SW FB	Atkinson and Wacasey 1989b
Bryozoa	-	<i>Hippoporina reticulatopunctata</i>	RWS, FC	Atkinson and Wacasey 1989a, b
Bryozoa	-	<i>Leieschara subgracilis</i>	CI, SW FB	Atkinson and Wacasey 1989a, b
Bryozoa	-	<i>Microporella ciliata</i>	SFC	Atkinson and Wacasey 1989a
Bryozoa	-	<i>Microporina articulata</i>	RWS, CI, SW FB	Atkinson and Wacasey 1989a, b
Bryozoa	-	<i>Parasmittina jeffreysi</i>	SFC, FS, SW FB	Atkinson and Wacasey 1989b
Bryozoa	-	<i>Phidolopora elongata</i>	FS, SW FB	Atkinson and Wacasey 1989b
Bryozoa	-	<i>Porella acutirostris</i>	RWS	Atkinson and Wacasey 1989a
Bryozoa	-	<i>Porella smitti</i>	CI	Atkinson and Wacasey 1989a
Bryozoa	-	<i>Porella struma</i>	CI	Atkinson and Wacasey 1989a

Phylum	Class (Order)	Species	Location ¹	Source
Bryozoa	-	<i>Posterula sarsii</i>	FS, SW FB	Atkinson and Wacasey 1989b
Bryozoa	-	<i>Pseudoflustra solida</i>	RB, FS	Atkinson and Wacasey 1989b
Bryozoa	-	<i>Rhamphostomella costata</i>	RWS, SW FB	Atkinson and Wacasey 1989a, b
Bryozoa	-	<i>Schizobrachiella stylifera</i>	SW FB	Atkinson and Wacasey 1989b
Bryozoa	-	<i>Schizomavella auriculata</i>	SFC	Atkinson and Wacasey 1989b
Bryozoa	-	<i>Schizoporella obesa</i>	CI	Atkinson and Wacasey 1989a
Bryozoa	-	<i>Securiflustra securifrons</i>	FS, FC	Atkinson and Wacasey 1989b
Bryozoa	-	<i>Serratiflustra serrulata</i>	RWS, FS	Atkinson and Wacasey 1989a, b
Bryozoa	-	<i>Smittina rigida</i>	CI, SFC	Atkinson and Wacasey 1989a, b
Bryozoa	-	<i>Smittoidea propinqua</i>	RWS, FS, SFC	Atkinson and Wacasey 1989a, b
Bryozoa	-	<i>Tegella armifera</i>	CI	Atkinson and Wacasey 1989a
Bryozoa	-	<i>Terminoflustra membranaceotruncata</i>	CI, SW FB	Atkinson and Wacasey 1989b
Bryozoa	-	<i>Tricellaria gracilis</i>	RWS	Atkinson and Wacasey 1989a
Bryozoa	-	<i>Tricellaria peachii</i>	FS	Atkinson and Wacasey 1989b
Bryozoa	-	<i>Tricellaria ternata</i>	FS, FC	Atkinson and Wacasey 1989b
Brachiopoda	-	<i>Cryptopora gnomon</i>	CI, SFC	Atkinson and Wacasey 1989a
Brachiopoda	-	<i>Hemithiris psittacea</i>	RB, RWS, FS, CI, SFC, FC, SW FB	Atkinson and Wacasey 1989a, b
Echinodermata	Asteroidea	<i>Crossaster papposus</i>	RWS, FS, FC, SW FB	Atkinson and Wacasey 1989b
Echinodermata	Asteroidea	<i>Ctenodiscus crispatus</i>	BI, RB	Nunavut 2012, 2014
Echinodermata	Asteroidea	<i>Henricia eschrichti</i>	RWS, SFC, FC, SW FB	Atkinson and Wacasey 1989a, b
Echinodermata	Asteroidea	<i>Henricia perforata</i>	SW FB	Atkinson and Wacasey 1989b
Echinodermata	Asteroidea	<i>Leptasterias groenlandica</i>	RWS, FS, CI, FC, SW FB	Atkinson and Wacasey 1989a, b
Echinodermata	Asteroidea	<i>Leptasterias (Hexasterias) polaris</i>	RWS	Atkinson and Wacasey 1989a
Echinodermata	Asteroidea	<i>Pteraster militaris</i>	RB, RWS, CI, SW FB	Atkinson and Wacasey 1989a, b
Echinodermata	Asteroidea	<i>Pteraster obscurus</i>	CI	Atkinson and Wacasey 1989a
Echinodermata	Asteroidea	<i>Pteraster pulvillus</i>	RB, RWS, SW FB	Atkinson and Wacasey 1989a, b
Echinodermata	Asteroidea	<i>Solaster endeca</i>	FS, CI, FC, SW FB	Atkinson and Wacasey 1989a, b
Echinodermata	Asteroidea	<i>Solaster syrtensis</i>	RB	Atkinson and Wacasey 1989b

Phylum	Class (Order)	Species	Location ¹	Source
Echinodermata	Asteroidea	<i>Stephanasterias albula</i>	RWS, CI, FC, SW FB	Atkinson and Wacasey 1989a, b
Echinodermata	Crinoidea	<i>Heliometra glacialis</i>	CI, SW FB	Atkinson and Wacasey 1989a, b
Echinodermata	Echinoidea	<i>Strongylocentrotus droebachiensis</i>	RB, RWS, FS, CI, SFC, FC, SW FB	Atkinson and Wacasey 1989a, b
Echinodermata	Holothuroidea	<i>Cucumaria frondosa</i>	RWS, CI, SFC, FC, CH, BI	Atkinson and Wacasey 1989a, b; Nunavut 2014
Echinodermata	Holothuroidea	<i>Myriotrochus rinkii</i>	CI	Atkinson and Wacasey 1989a
Echinodermata	Holothuroidea	<i>Psolus fabricii</i>	RB, CI, SFC	Atkinson and Wacasey 1989a, b
Echinodermata	Holothuroidea	<i>Psolus phantapus</i>	CI	Atkinson and Wacasey 1989a
Echinodermata	Holothuroidea	<i>Thyonidium</i> sp.	FC	Atkinson and Wacasey 1989b
Echinodermata	Ophiuroidea	<i>Amphiura sundevalli</i>	RB, CI	Atkinson and Wacasey 1989a, b
Echinodermata	Ophiuroidea	<i>Gorgonocephalus arcticus</i>	CI, SFC, FC	Atkinson and Wacasey 1989a, b
Echinodermata	Ophiuroidea	<i>Ophiacantha bidentata</i>	RB, RWS, FS, CI, FC, SFC, SW FB	Atkinson and Wacasey 1989a, b
Echinodermata	Ophiuroidea	<i>Ophiecten sericeum</i>	RB, FS, CI, FC, SW FB	Atkinson and Wacasey 1989a, b
Echinodermata	Ophiuroidea	<i>Ophiopholis aculeata</i>	RWS, FS, CI, SFC, FC	Atkinson and Wacasey 1989a, b
Echinodermata	Ophiuroidea	<i>Ophiopus arcticus</i>	RB, FS, FC, SW FB,	Atkinson and Wacasey 1989b
Echinodermata	Ophiuroidea	<i>Ophiura robusta</i>	RWS, CI, SFC, FC, SW FB	Atkinson and Wacasey 1989a, b
Echinodermata	Ophiuroidea	<i>Ophiurasarsii</i>	RB, FS, CI, SFC	Atkinson and Wacasey 1989a, b
Echinodermata	Ophiuroidea	<i>Stegophiura nodosa</i>	CI, FC, SW FB	Atkinson and Wacasey 1989a, b
Chordata	Ascidacea	<i>Aplidium glabrum</i>	FC, SFC, SW FB	Atkinson and Wacasey 1989a, b
Chordata	Ascidacea	<i>Ascidia</i> sp.	CI, SW FB	Atkinson and Wacasey 1989a, b
Chordata	Ascidacea	<i>Ascidia callosa</i>	RWS, CI, SW FB	Atkinson and Wacasey 1989a, b
Chordata	Ascidacea	<i>Ascidia prunum</i>	RWS, SW FB	Atkinson and Wacasey 1989a, b
Chordata	Ascidacea	<i>Boltenia echinata</i>	RWS, SW FB	Atkinson and Wacasey 1989a, b
Chordata	Ascidacea	<i>Boltenia ovifera</i>	RWS, FS, SFC, FC, SW FB	Atkinson and Wacasey 1989a, b
Chordata	Ascidacea	<i>Botrylloides aureum</i>	SW FB	Atkinson and Wacasey 1989b
Chordata	Ascidacea	<i>Chelyosoma macleayanum</i>	FC	Atkinson and Wacasey 1989b
Chordata	Ascidacea	<i>Ciona intestinalis</i>	RB	Atkinson and Wacasey 1989b

Phylum	Class (Order)	Species	Location ¹	Source
Chordata	Asciacea	<i>Cnemidocarpa finmarkiensis</i>	RB, RWS	Atkinson and Wacasey 1989a, b
Chordata	Asciacea	<i>Cnemidocarpa rhizopus</i>	RWS, CI, SFC	Atkinson and Wacasey 1989a
Chordata	Asciacea	<i>Dendrodoa aggregata</i>	RWS, FS, CI, SFC, FC, SW FB	Atkinson and Wacasey 1989a, b
Chordata	Asciacea	<i>Didemnum albidum</i>	RWS, SFC, FC, SW FB	Atkinson and Wacasey 1989a, b
Chordata	Asciacea	<i>Distaplia clavata</i>	FC	Atkinson and Wacasey 1989b
Chordata	Asciacea	<i>Eudistoma vitreum</i>	SW FB	Atkinson and Wacasey 1989b
Chordata	Asciacea	<i>Halocynthia pyriformis</i>	RWS, FS, FC	Atkinson and Wacasey 1989a, b
Chordata	Asciacea	<i>Molgula griffithsii</i>	RWS, CI, FC,	Atkinson and Wacasey 1989a, b
Chordata	Asciacea	<i>Molgula siphonalis</i>	RWS, SFC, SW FB	Atkinson and Wacasey 1989a
Chordata	Asciacea	<i>Pelonaia corrugata</i>	CI	Atkinson and Wacasey 1989a
Chordata	Asciacea	<i>Rhizomolgula globularis</i>	CI	Atkinson and Wacasey 1989a
Chordata	Asciacea	<i>Styela coriacea</i>	RWS, SFC, FC	Atkinson and Wacasey 1989a, b
Chordata	Asciacea	<i>Styela rustica</i>	RWS, SFC, SW FB	Atkinson and Wacasey 1989a, b
Chordata	Asciacea	<i>Synoicum pulmonaria</i>	RWS	Atkinson and Wacasey 1989a, b

¹BI = Bencas Island; CI = Coats Island including neighboring waterbodies and islands; CH = Coral Harbour; FC = Foxe Channel; FS = Frozen Strait; RB = Repulse Bay; RWS = Roes Welcome Sound; SFC = South Foxe Channel; SW FB = southwest Foxe Basin.

FISH

Approximately 42–44 species of marine fish have been documented to occur in Hudson Bay, while 88 species occur in Hudson Strait, and 18 have been recorded from Foxe Basin (Coad and Reist 2018). Although fish community investigations in the SI EBSA are limited, many of the species observed in these regions could be present in the EBSA. Table 4 provides a list of fish species that do, or may, occur in the SI EBSA based on IQ (Nunavut 2012, 2014) and science information (Able and McAllister 1980, Buchanan et al. 1977, Coad and Reist 2018, Froese and Pauly 2017, Mecklenburg et al. 2011, Ponton et al. 1993, Stewart and Bernier 1984, and Walters 1955). Figures 1 to 21 provide fish species distributions for each family group for the SI EBSA and surrounding regions (Coad and Reist 2018).

Table 4. Fish species that occur or may occur in the SI EBSA based on science and traditional knowledge.

Family	Common Name	Scientific Name	Source(s)
Agonidae	Atlantic Poacher	<i>Leptagonus decagonus</i>	Coad and Reist 2018; Stewart and Lockhart 2005
Agonidae	Arctic Alligatorfish	<i>Aspidophoroides olrikii</i>	Walters 1955; Stewart and Bernier 1984; Ponton et al. 1993; Coad and Reist 2018; Stewart and Lockhart 2005
Ammodytidae	Northern Sand Lance	<i>Ammodytes dubius</i>	Walters 1955; Stewart and Bernier 1984; Coad and Reist 2018; Stewart and Lockhart 2005; Nunavut 2014
Ammodytidae	Pacific Sand Lance	<i>Ammodytes hexapterus</i>	Walters 1955; Stewart and Bernier 1984; Coad and Reist 2018; Stewart and Lockhart 2005; Nunavut 2014
Anarhichadidae	Spotted Wolffish ⁵	<i>Anarhichas minor</i>	Mecklenburg et al. 2011
Clupeidae	Atlantic Herring	<i>Clupea harengus</i>	Coad and Reist 2018; Stewart and Lockhart 2005; Nunavut 2012
Cottidae	Arctic Hookear Sculpin	<i>Artediellus uncinatus</i>	Coad and Reist 2018
Cottidae	Arctic Staghorn Sculpin	<i>Gymnocanthus tricuspis</i>	Stewart and Bernier 1984; Ponton et al. 1993; Coad and Reist 2018; Stewart and Lockhart 2005; Nunavut 2012, 2014
Cottidae	Twohorn Sculpin	<i>Icelus bicornis</i>	Stewart and Bernier 1984; Ponton et al. 1993; Coad and Reist 2018; Stewart and Lockhart 2005; Nunavut 2012, 2014
Cottidae	Spatulate Sculpin	<i>Icelus spatula</i>	Stewart and Bernier 1984; Ponton et al. 1993; Coad and Reist 2018; Stewart and Lockhart 2005; Nunavut 2014
Cottidae	Fourhorn Sculpin	<i>Myoxocephalus quadricornis</i>	Stewart and Bernier 1984; Ponton et al. 1993; Coad and Reist 2018; Stewart and Lockhart 2005
Cottidae	Arctic Sculpin	<i>Myoxocephalus scorpioides</i>	Stewart and Bernier 1984; Ponton et al. 1993; Coad and Reist 2018; Stewart and Lockhart 2005; Nunavut 2014

Family	Common Name	Scientific Name	Source(s)
Cottidae	Shorthorn Sculpin	<i>Myoxocephalus scorpius</i>	Stewart and Bernier 1984; Ponton et al. 1993; Coad and Reist 2018; Stewart and Lockhart 2005; Mecklenburg et al. 2011; Nunavut 2012, 2014
Cottidae	Moustache Sculpin	<i>Triglops murrayi</i>	Stewart and Lockhart 2005
Cottidae	Bigeye Sculpin	<i>Triglops nybelini</i>	Coad and Reist 2018
Cottidae	Ribbed Sculpin	<i>Triglops pingelii</i>	Stewart and Bernier 1984; Ponton et al. 1993; Stewart and Lockhart 2005
Cyclopteridae	Lumpfish	<i>Cyclopterus lumpus</i>	Coad and Reist 2018; Stewart and Lockhart 2005
Cyclopteridae	Leatherfin Lumpsucker	<i>Eumicrotremus derjugini</i>	Walters 1955; Coad and Reist 2018; Stewart and Lockhart 2005; Nunavut 2012
Cyclopteridae	Atlantic Spiny Lumpsucker	<i>Eumicrotremus spinosus</i>	Stewart and Bernier 1984; Coad and Reist 2018; Stewart and Lockhart 2005
Gadidae	Polar Cod	<i>Arctogadus glacialis</i>	Buchanan et al. 1977; Coad and Reist 2018; Stewart and Lockhart 2005; Nunavut 2014, 2015
Gadidae	Arctic Cod	<i>Boreogadus saida</i>	Stewart and Bernier 1984; Ponton and Fortier 1992; Ponton et al. 1993; Coad and Reist 2018; Stewart and Lockhart 2005; Mecklenburg et al. 2011; Nunavut 2012, 2014
Gadidae	Atlantic Cod	<i>Gadus morhua</i>	Coad and Reist 2018; Froese and Pauly 2017; Nunavut 2012, 2014
Gadidae	Greenland Cod	<i>Gadus ogac</i>	Stewart and Bernier 1984; Ponton et al. 1993; Coad and Reist 2018; Nunavut 2014
Gasterosteidae	Three-spined Stickleback	<i>Gasterosteus aculeatus</i>	Nunavut 2012
Gasterosteidae	Ninespine Stickleback	<i>Pungitius pungitius</i>	Walters 1955; Coad and Reist 2018; Nunavut 2012
Liparidae	Gelatinous Seasnail	<i>Liparis fabricii</i>	Able and McAllister 1980; Stewart and Bernier 1984; Ponton et al. 1993; Coad and Reist 2018; Stewart and Lockhart 2005
Liparidae	Variiegated Snailfish	<i>Liparis gibbus</i>	Able and McAllister 1980; Stewart and Bernier 1984; Coad and Reist 2018; Stewart and Lockhart 2005
Liparidae	Kelp Snailfish	<i>Liparis tunicatus</i>	Able and McAllister 1980; Stewart and Bernier 1984; Coad and Reist 2018; Stewart and Lockhart 2005
Liparidae	Sea Tadpole	<i>Careproctus reinhardti</i>	Coad and Reist 2018; Stewart and Lockhart 2005
Lotidae	Burbot	<i>Lota lota</i>	Coad and Reist 2018
Lumpenidae	Stout Eelblenny	<i>Anisarchus medius</i>	Coad and Reist 2018; Stewart and Lockhart 2005; Mecklenburg et al. 2011

Family	Common Name	Scientific Name	Source(s)
Myctophidae	Glacier Lantern Fish	<i>Benthoosema glacialis</i>	Coad and Reist 2018; Froese and Pauly 2017
Osmeridae	Capelin	<i>Mallotus villosus</i>	Walters 1955; Stewart and Bernier 1984; Ponton and Fortier 1992; Ponton et al. 1993; Coad and Reist 2018; Stewart and Lockhart 2005; Nunavut 2012, 2014
Osmeridae	Rainbow Smelt	<i>Osmerus mordax</i>	Coad and Reist 2018; Stewart and Lockhart 2005; Nunavut 2012
Paralepididae	Spotted Barracudina	<i>Arctozenus risso</i>	Coad and Reist 2004; Froese and Pauly 2017
Pholidae	Banded Gunnel	<i>Pholis fasciata</i>	Ponton et al. 1993; Coad and Reist 2018; Stewart and Lockhart 2005
Pholidae	Atlantic Wolffish ⁴	<i>Anarhichas lupus</i>	Coad and Reist 2018; Froese and Pauly 2017
Pleuronectidae	American Plaice	<i>Hippoglossoides platessoides</i>	Ponton et al. 1993; Coad and Reist 2018; Stewart and Lockhart 2005
Pleuronectidae	Greenland Halibut	<i>Reinhardtius hippoglossoides</i>	Coad and Reist 2018; Froese and Pauly 2017
Psychrolutidae	Smooth Lumpfish	<i>Cyclopteroopsis jordani</i>	Coad and Reist 2018; Nunavut 2012, 2014
Psychrolutidae	Polar Sculpin	<i>Cottunculus microps</i>	Coad and Reist 2018
Rajidae	Thorny Skate ⁴	<i>Amblyraja radiata</i>	Coad and Reist 2018; Stewart and Lockhart 2005
Salmonidae	Cisco	<i>Coregonus artedii</i>	Walters 1955; Ponton et al. 1993; Coad and Reist 2018
Salmonidae	Lake Whitefish	<i>Coregonus clupeaformis</i>	Walters 1955; Ponton et al. 1993; Coad and Reist 2018; Nunavut 2014
Salmonidae	Round Whitefish	<i>Prosopium cylindraceum</i>	Walters 1955; Coad and Reist 2018
Salmonidae	Atlantic Salmon	<i>Salmo salar</i>	Coad and Reist 2018
Salmonidae	Arctic Char	<i>Salvelinus alpinus</i>	Coad and Reist 2018; Nunavut 2012, 2014
Salmonidae	Lake Char	<i>Savelinus namaycush</i>	Nunavut 2012, 2014
Salmonidae	Brook Char	<i>Salvelinus fontinalis</i>	Nunavut 2012, 2014
Sebastidae	Redfish species	Sebastes spp.	Coad and Reist 2018; Froese and Pauly 2017
Somniosidae	Greenland Shark	<i>Somniosus microcephalus</i>	Coad and Reist 2018; Stewart and Lockhart 2005
Stichaeidae	Fourline Snakeblenny	<i>Eumesogrammus praecisus</i>	Coad and Reist 2018; Stewart and Lockhart 2005
Stichaeidae	Daubed Shanny	<i>Leptoclinus maculatus</i>	Stewart and Bernier 1984; Coad and Reist 2018; Stewart and Lockhart 2005
Stichaeidae	Slender Eelblenny	<i>Lumpenus fabricii</i>	Ponton et al. 1993; Coad and Reist 2018; Stewart and Lockhart 2005
Stichaeidae	Snakeblenny	<i>Lumpenus lampretaeformis</i>	Coad and Reist 2018

Family	Common Name	Scientific Name	Source(s)
Stichaeidae	Arctic Shanny	<i>Stichaeus punctatus</i>	Walters 1955; Ponton et al. 1993; Coad and Reist 2018; Stewart and Lockhart 2005
Zoarcidae	Fish Doctor	<i>Gymnelus viridis</i>	Stewart and Bernier 1984; Coad and Reist 2018; Stewart and Lockhart 2005
Zoarcidae	Eelpout	<i>Lycodes</i> sp.	Nunavut 2012
Zoarcidae	Greater Eelpout	<i>Lycodes esmarkii</i>	Coad and Reist 2018
Zoarcidae	Double-line Eelpout	<i>Lycodes eudipleurostictus</i>	Coad and Reist 2018
Zoarcidae	Newfoundland Eelpout	<i>Lycodes lavalaei</i>	Coad and Reist 2018
Zoarcidae	Saddled Eelpout	<i>Lycodes mucosus</i>	Stewart and Bernier 1984; Coad and Reist 2018
Zoarcidae	Pale Eelpout	<i>Lycodes pallidus</i>	Coad and Reist 2018; Stewart and Lockhart 2005
Zoarcidae	Polar Eelpout	<i>Lycodes polaris</i>	Coad and Reist 2004; Nunavut 2012
Zoarcidae	Arctic Eelpout	<i>Lycodes reticulatus</i>	Coad and Reist 2018; Stewart and Lockhart 2005; Nunavut 2014
Zoarcidae	Vahl's Eelpout	<i>Lycodes vahlii</i>	Coad and Reist 2018

¹Species listed in Coad and Reist (2018) and Stewart and Lockhart (2005) were included based on confirmed presence in Hudson/James Bay, Foxe Basin, and/or western Hudson Strait and where habitat depth requirements were met. There may be some taxonomic differences between older literature and present species occurrences.

²Species listed in Walters (1955) were included based on presence in Hudson Bay.

³Species listed in Ponton and Fortier (1992) and Ponton et al. (1993) were included as larval fish typically found in coastal Hudson Bay waters

⁴Listed as Special Concern under the [Species at Risk Public Registry](#) (Arctic Ocean population)

⁵Listed as Threatened under the [Species at Risk Public Registry](#) (Arctic Ocean population)

Figures 1-21. Fish species distributions by family for the SI EBSA and surrounding regions in the Hudson Bay Complex (Data provided by Coad and Reist 2018 and maps created by C. Sawatzky).

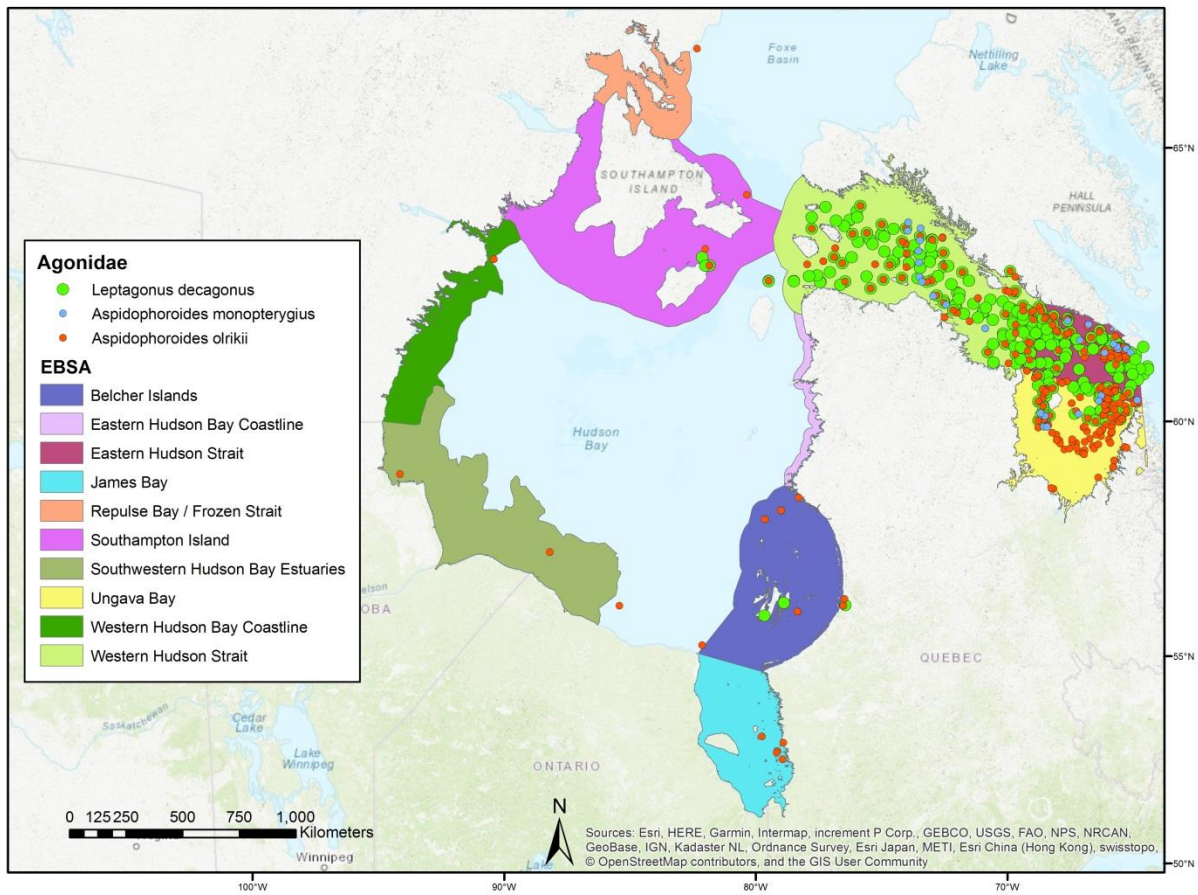


Figure 1. Fish species distribution for family Agonidae.

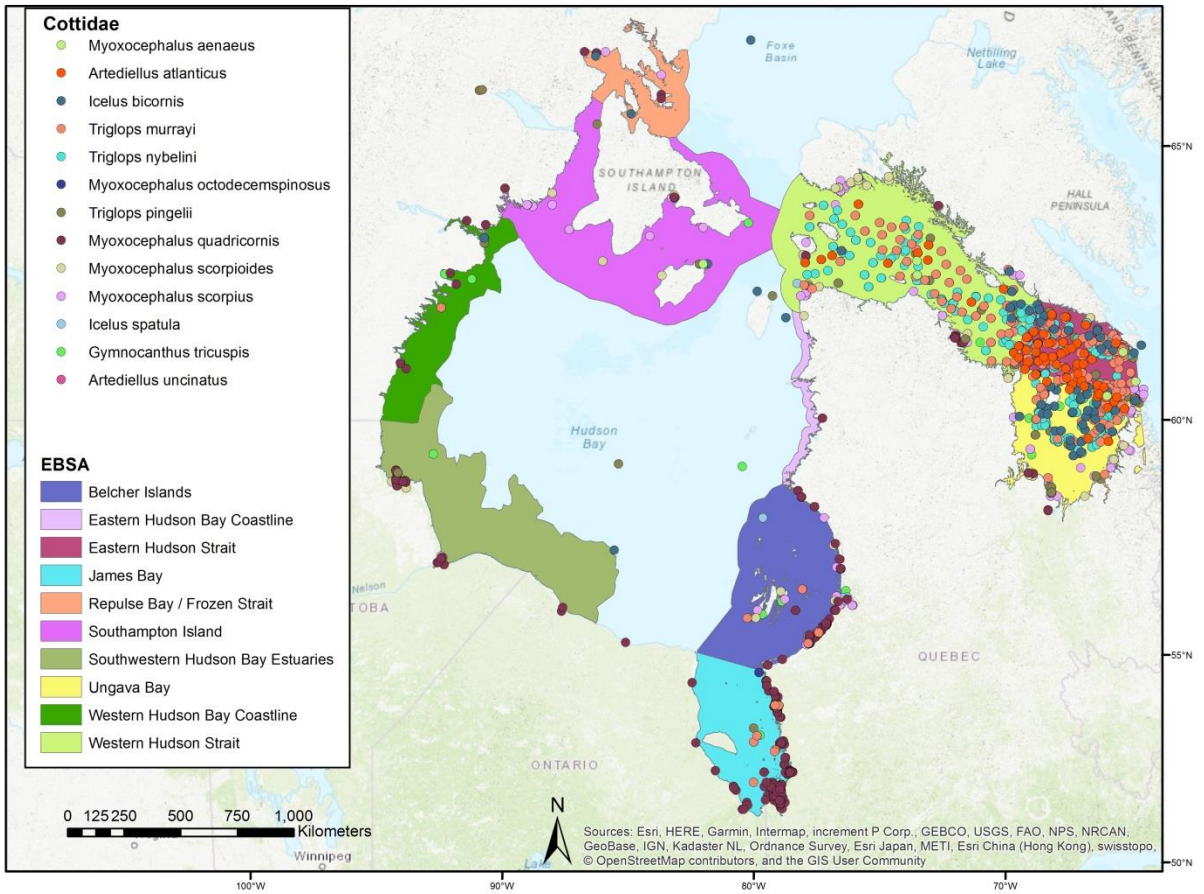


Figure 2. Fish species distribution for family Cottidae.

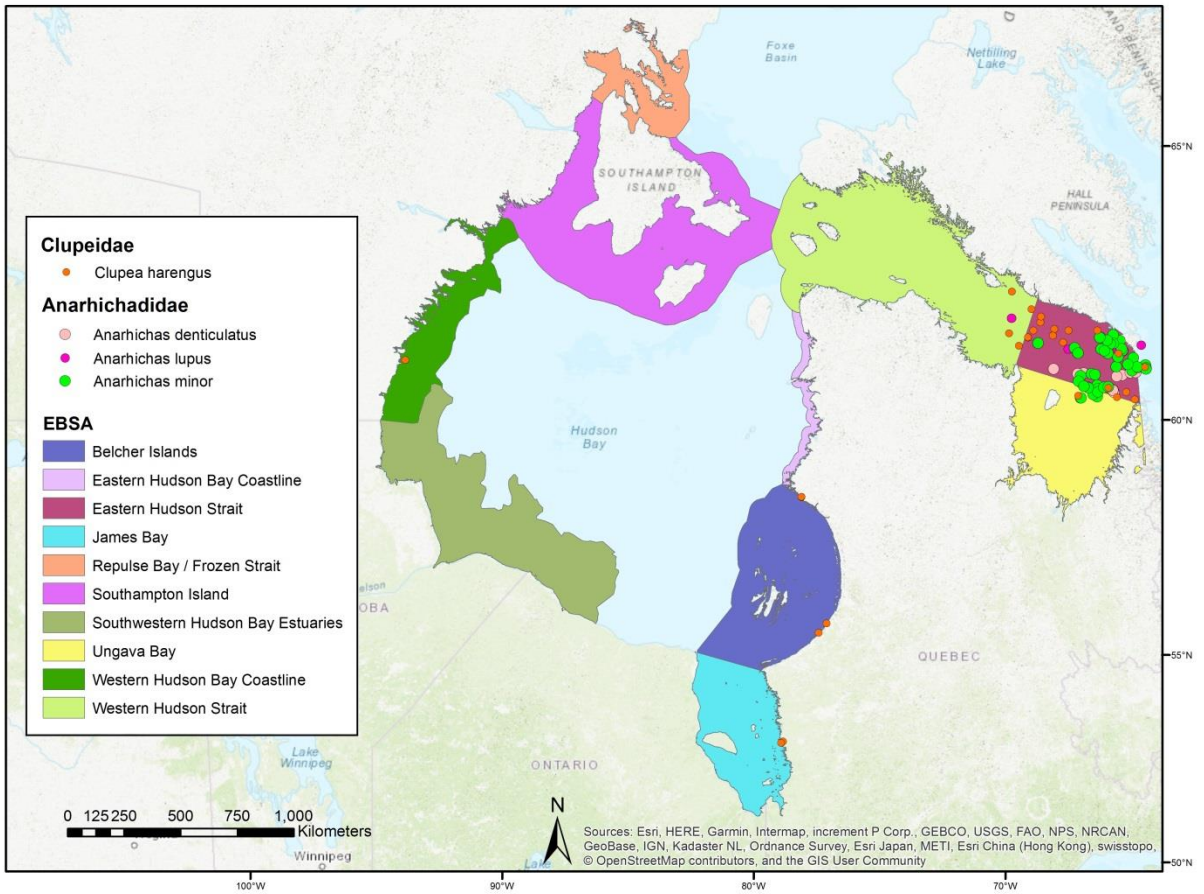


Figure 3. Fish species distribution for family Clupeidae and Anarhichadidae.

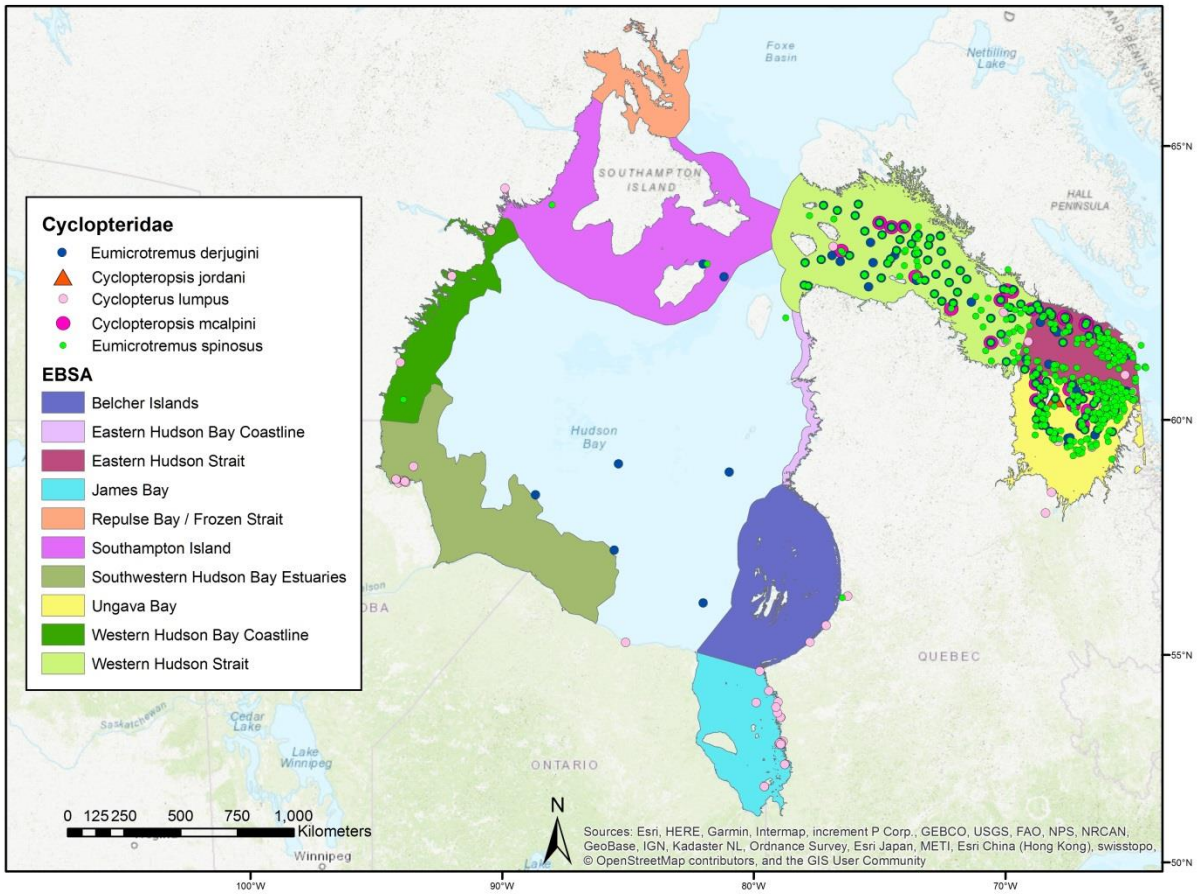


Figure 4. Fish species distribution for family Cyclopteridae.

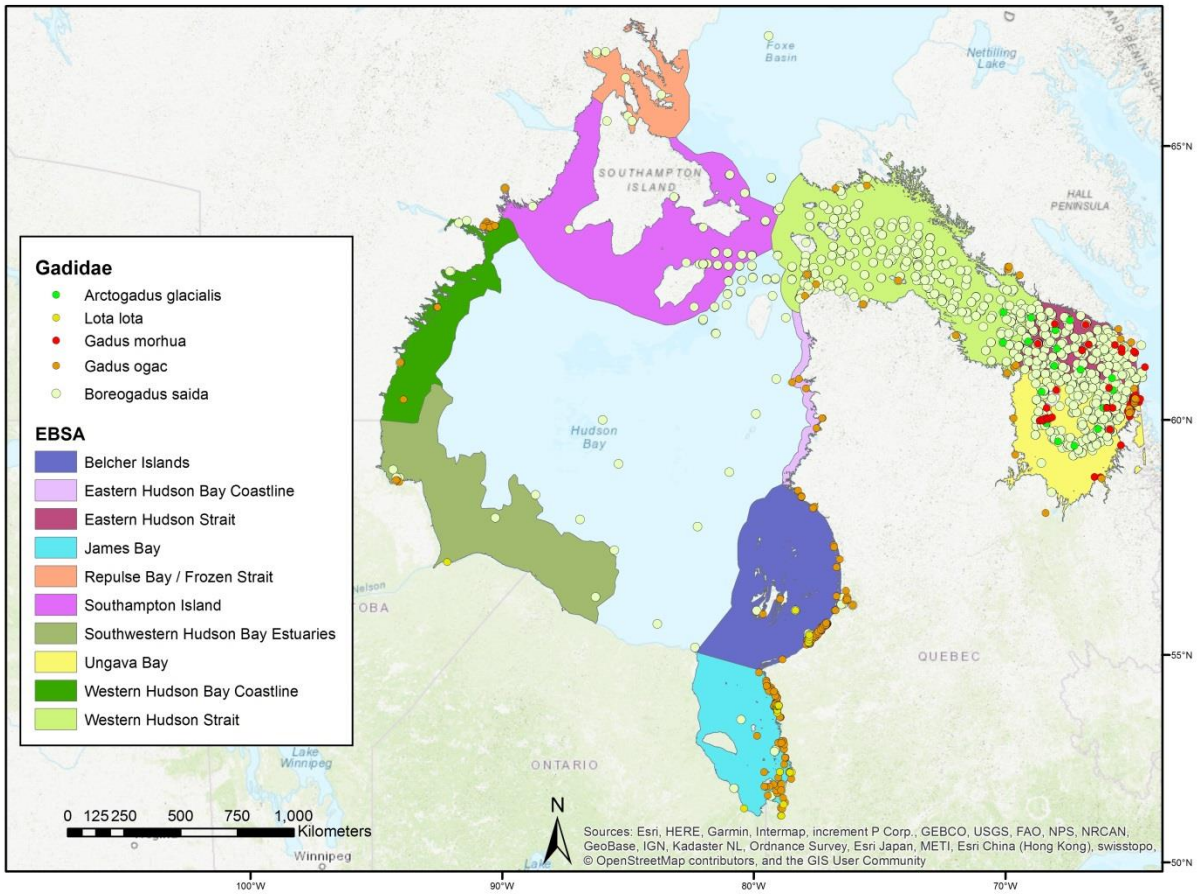


Figure 5. Fish species distribution for family Gadidae.

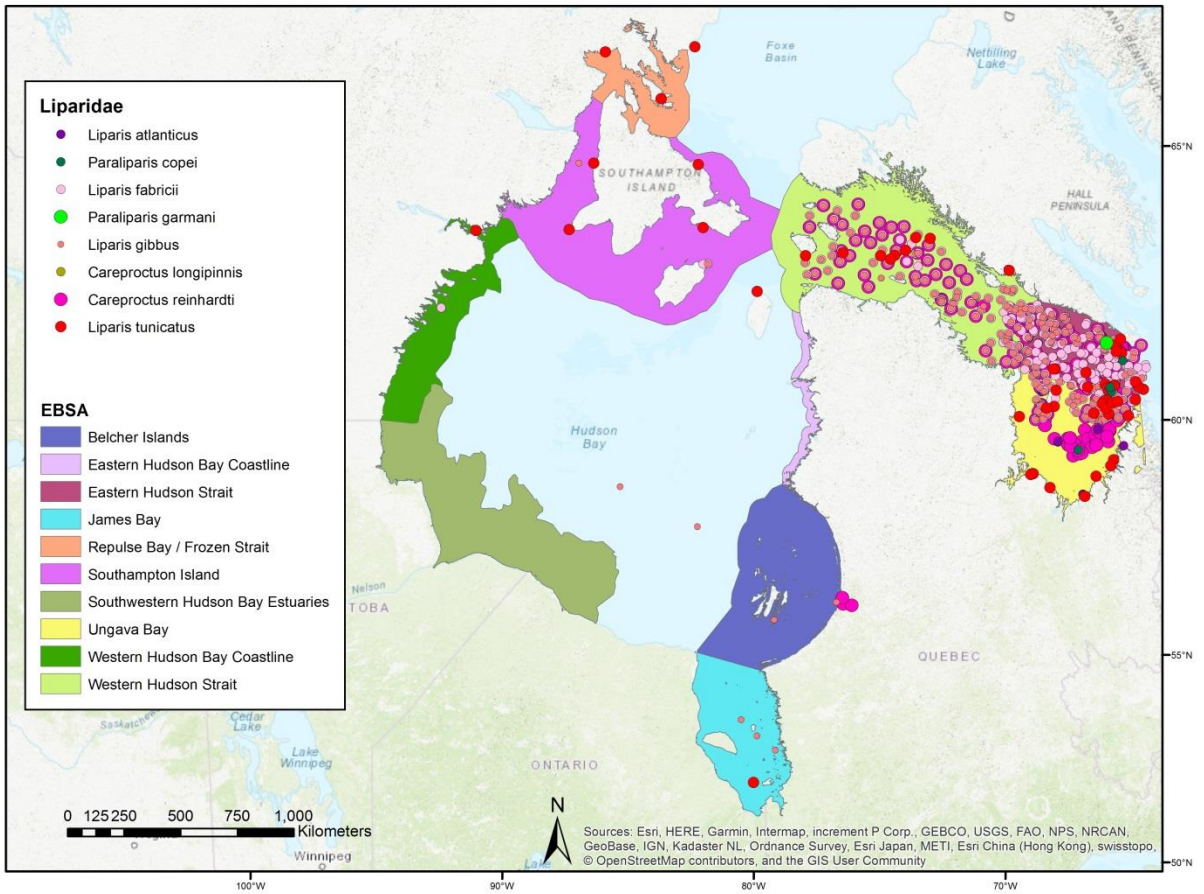


Figure 6. Fish species distribution for family Liparidae.

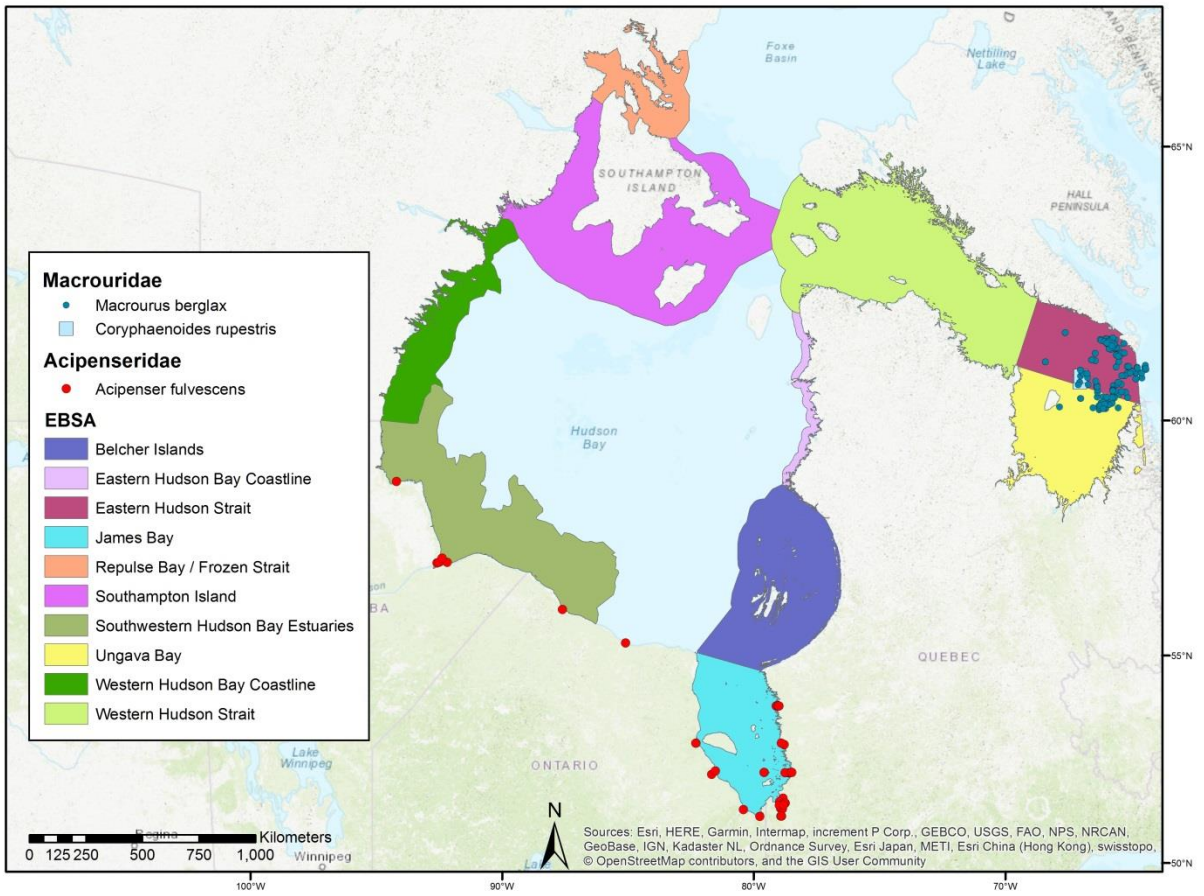


Figure 7. Fish species distribution for family Macrouridae and Acipenseridae.

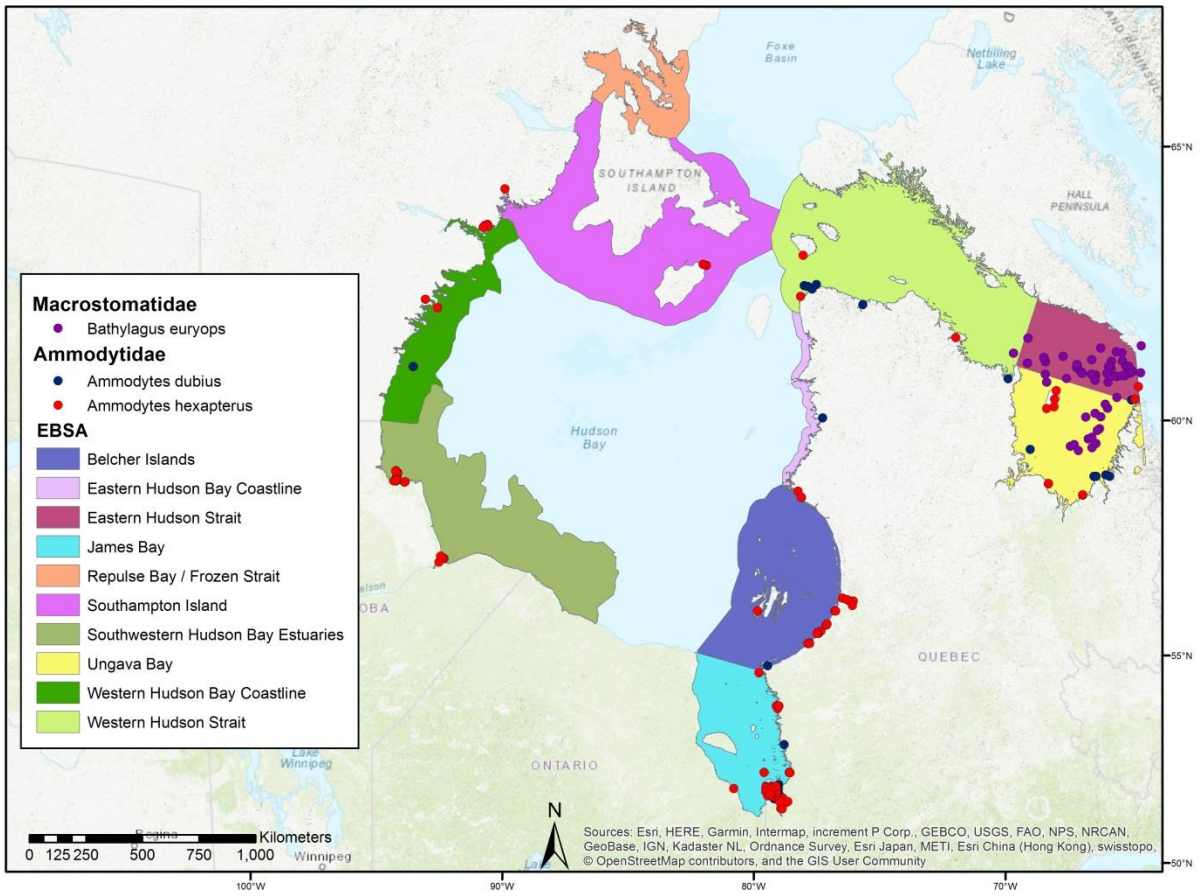


Figure 8. Fish species distribution for family Macrostomatidae and Ammodytidae.

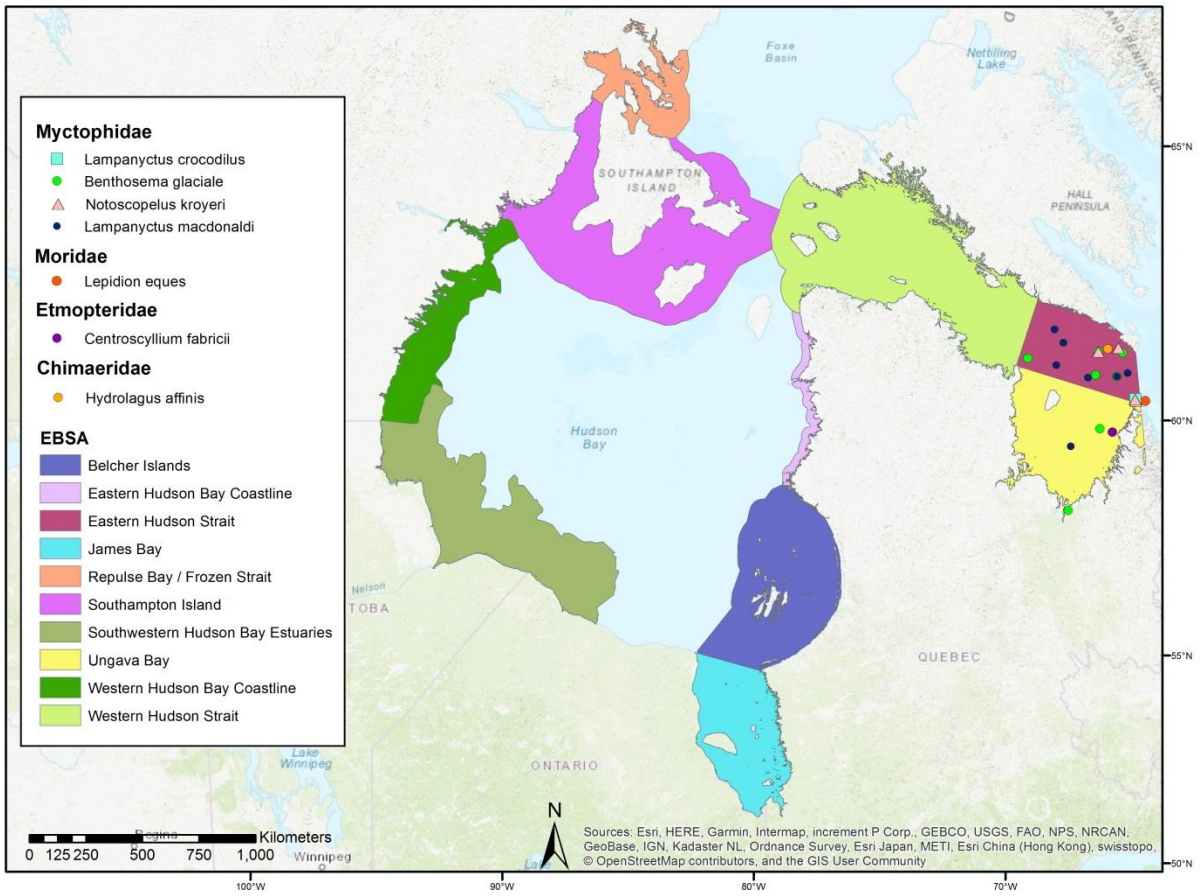


Figure 9. Fish species distribution for family Myctophidae, Moridae, Etmopteridae, Chimaeridae.

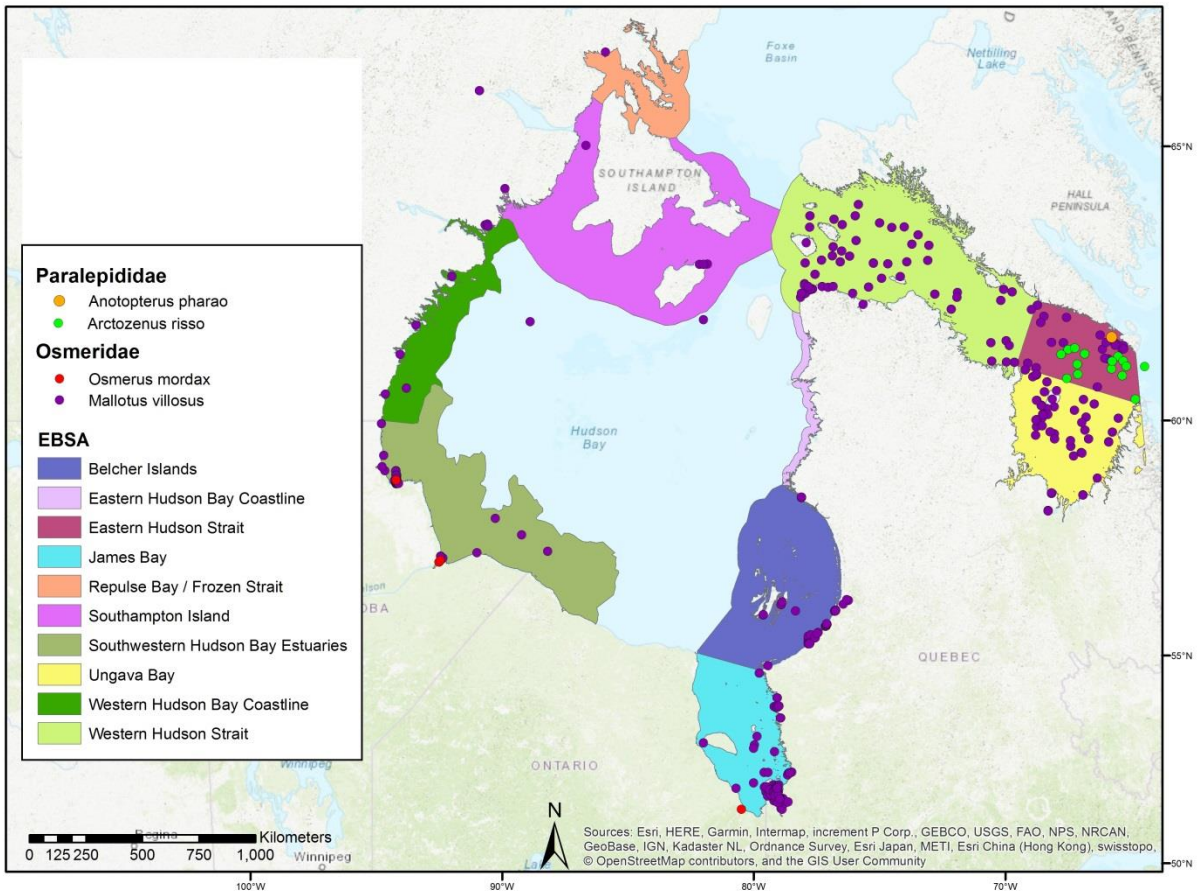


Figure 10. Fish species distribution for family Paralepididae and Osmeridae.

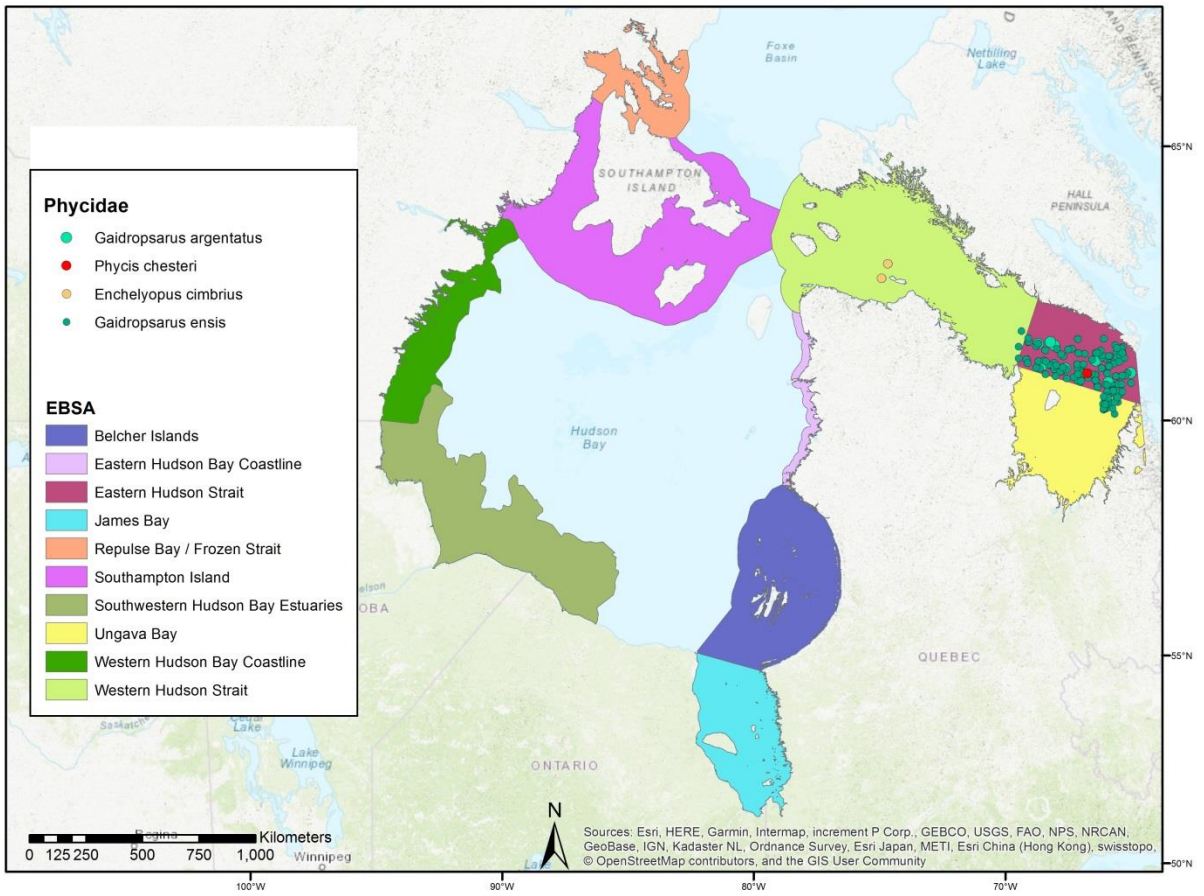


Figure 11. Fish species distribution for family Phycidae.

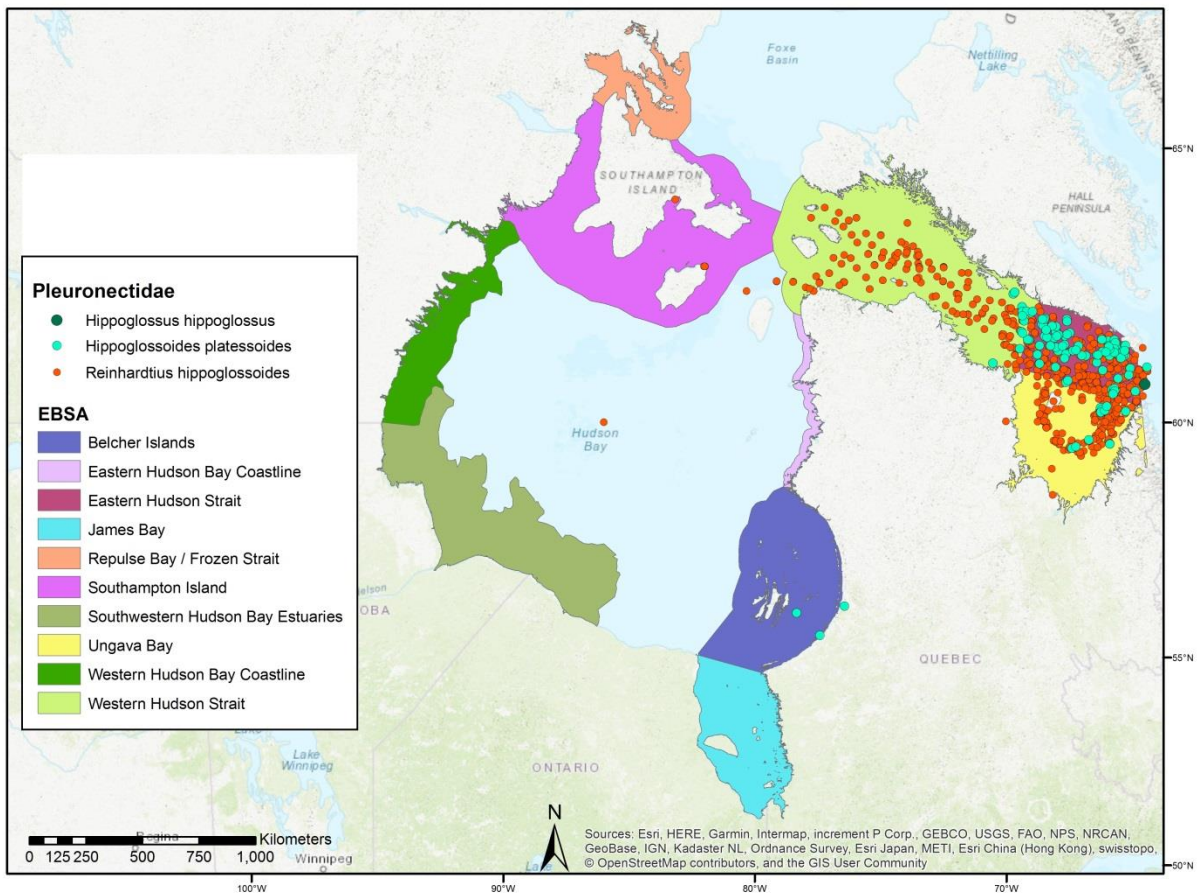


Figure 12. Fish species distribution for family Pleuronectidae.

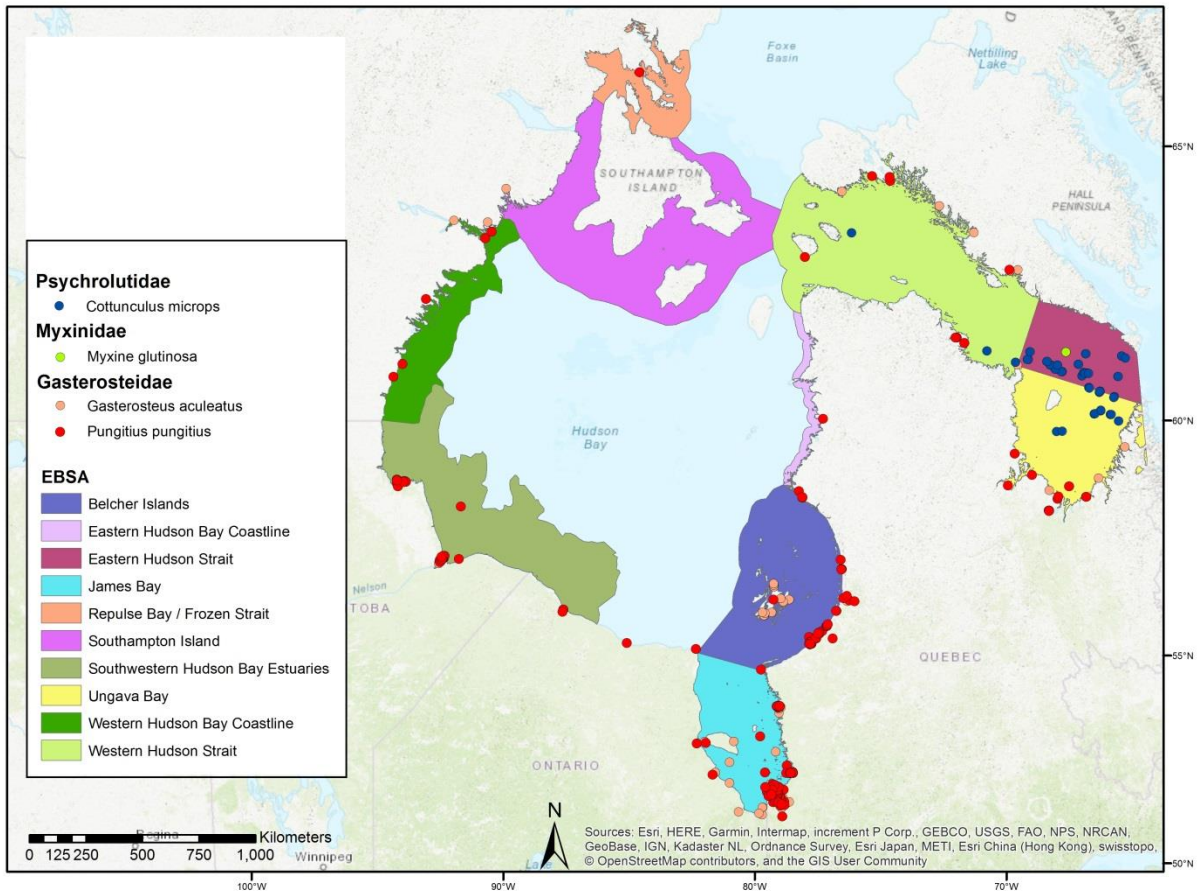


Figure 13. Fish species distribution for family Psychrolutidae, Myxinidae and Gasterosteidae.

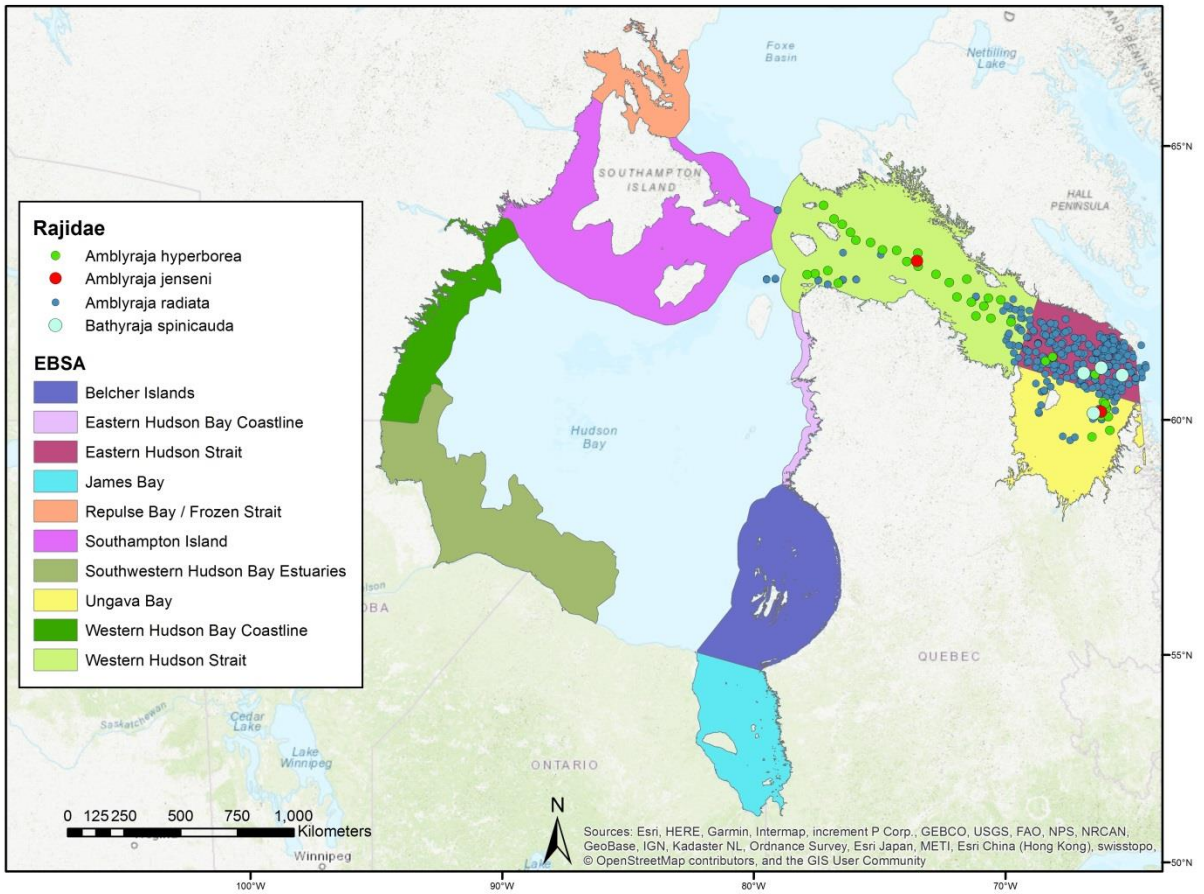


Figure 14. Fish species distribution for family Rajidae.

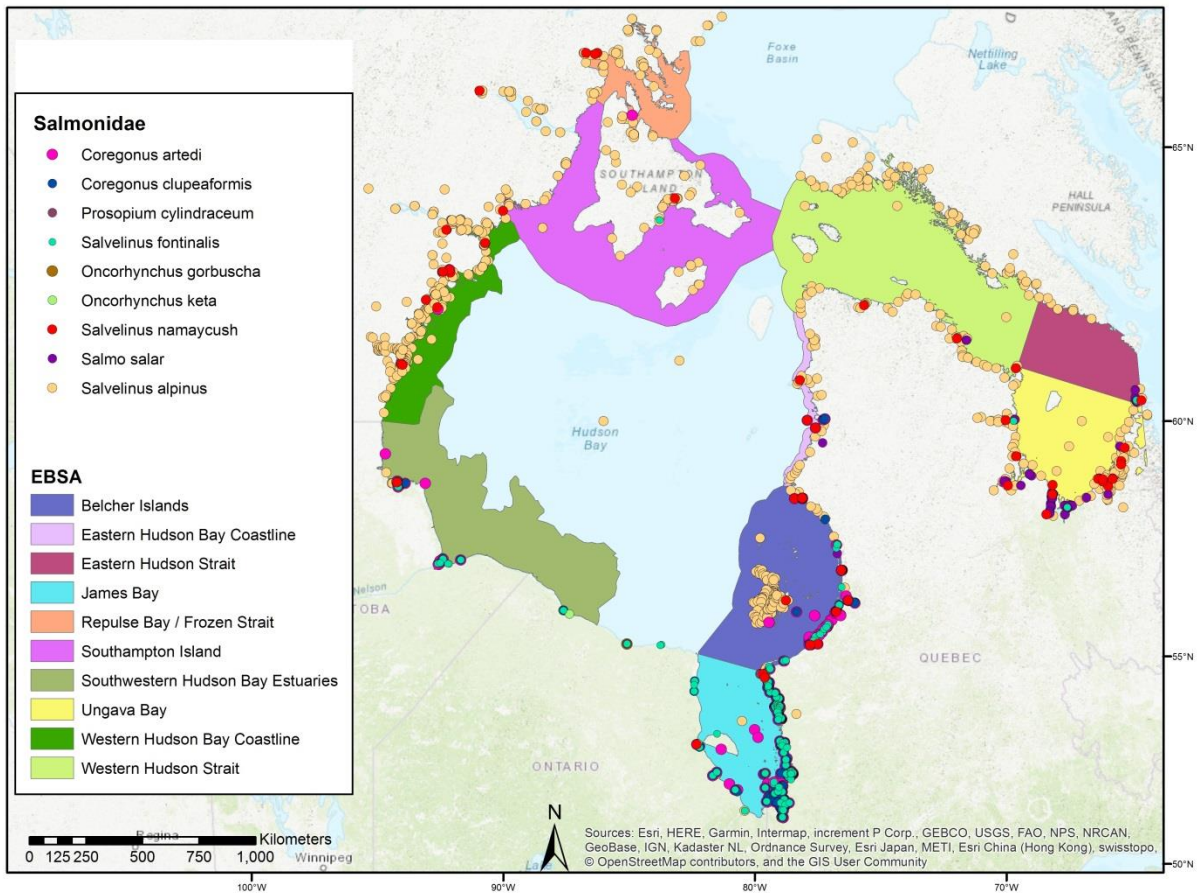


Figure 15. Fish species distribution for family Salmonidae.

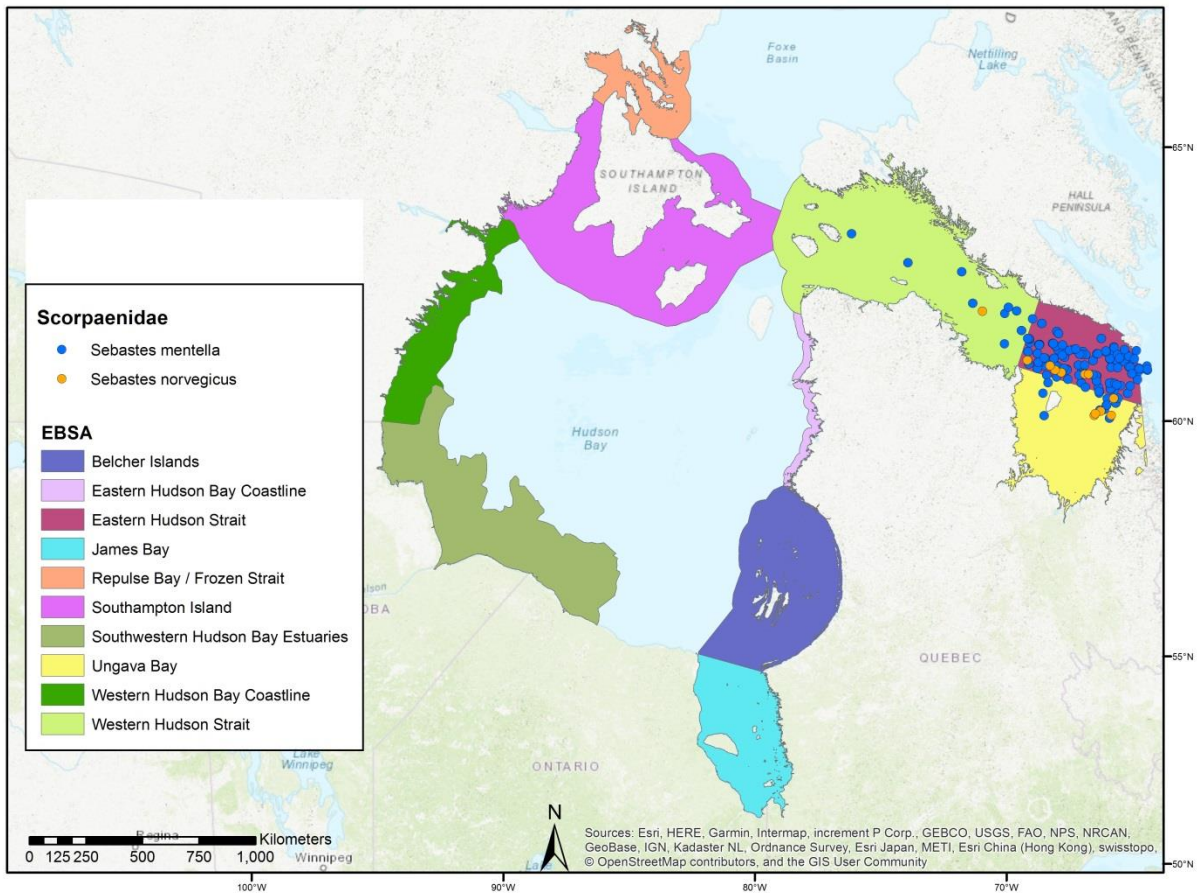


Figure 16. Fish species distribution for family Scorpaenidae.

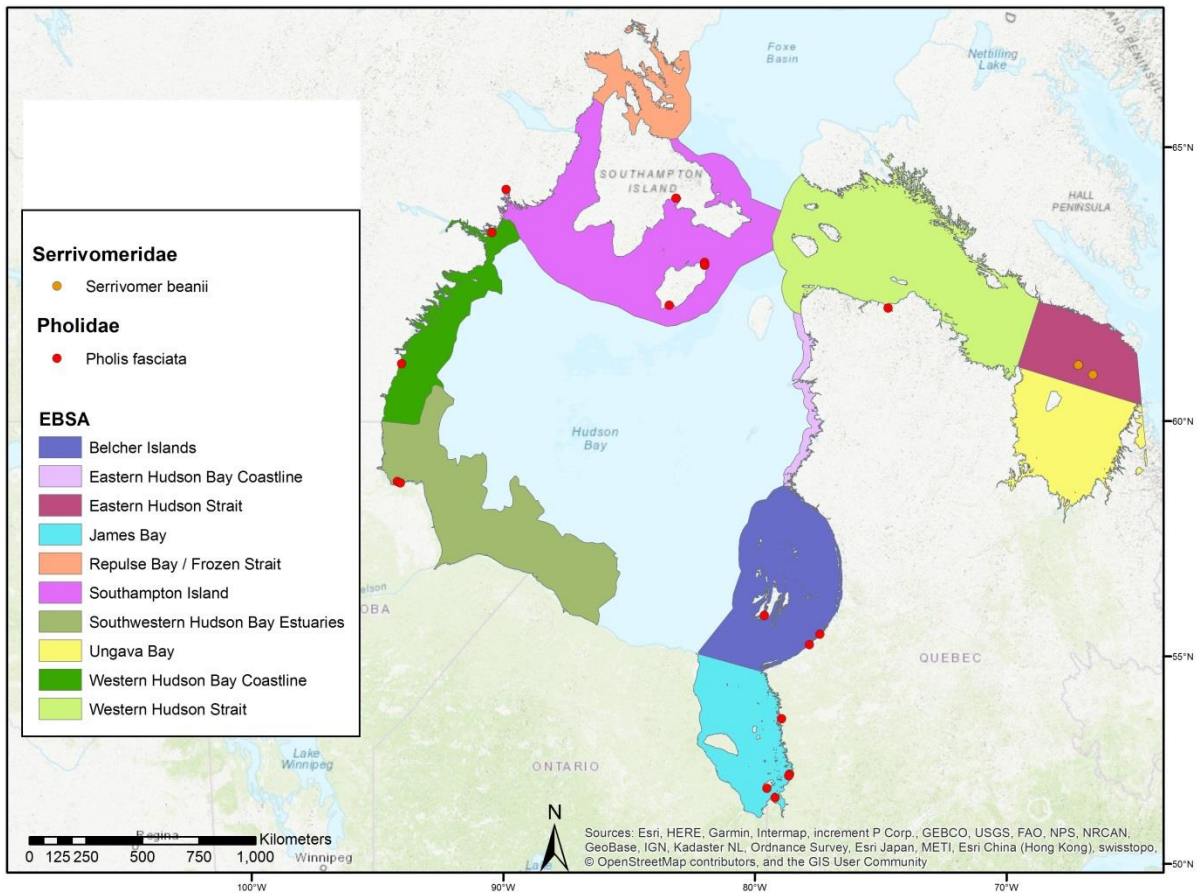


Figure 17. Fish species distribution for family Serrivomeridae and Pholidae.

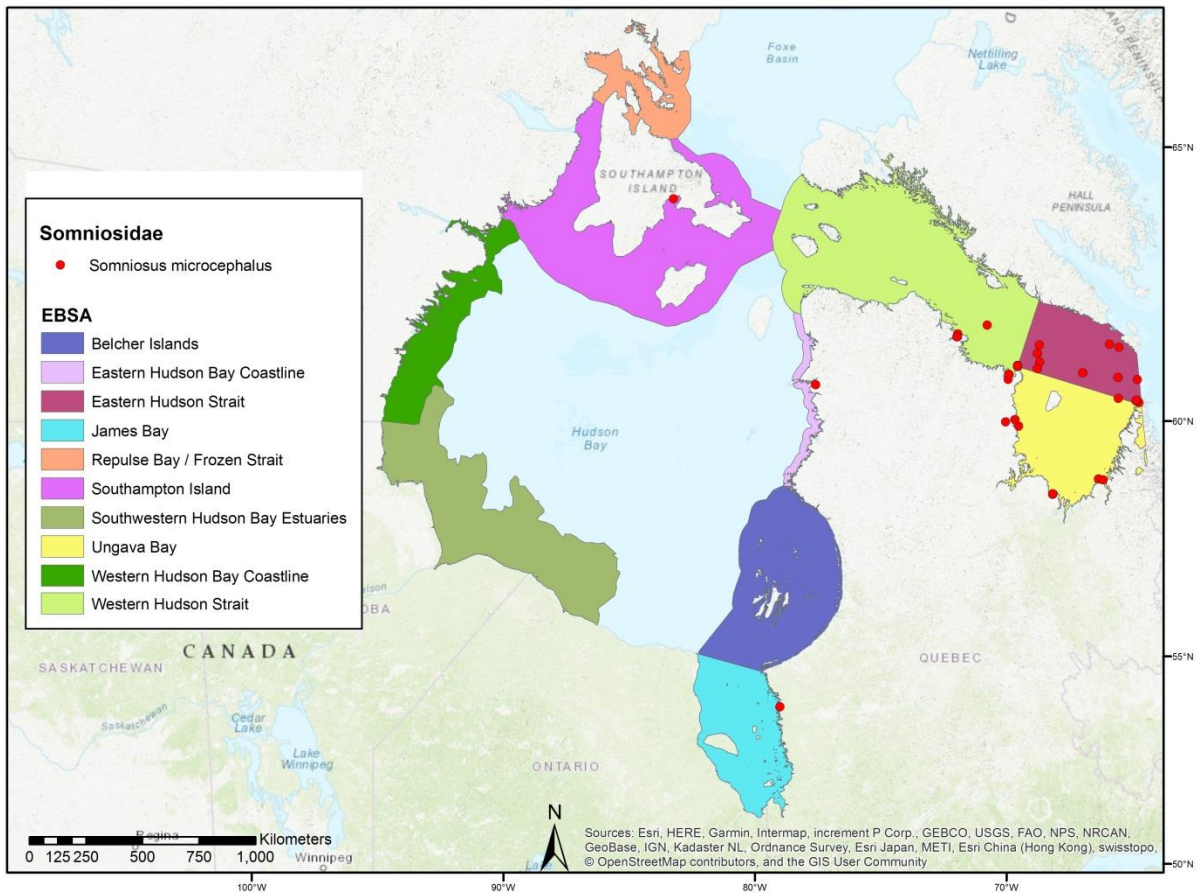


Figure 18. Fish species distribution for family Somniosidae.

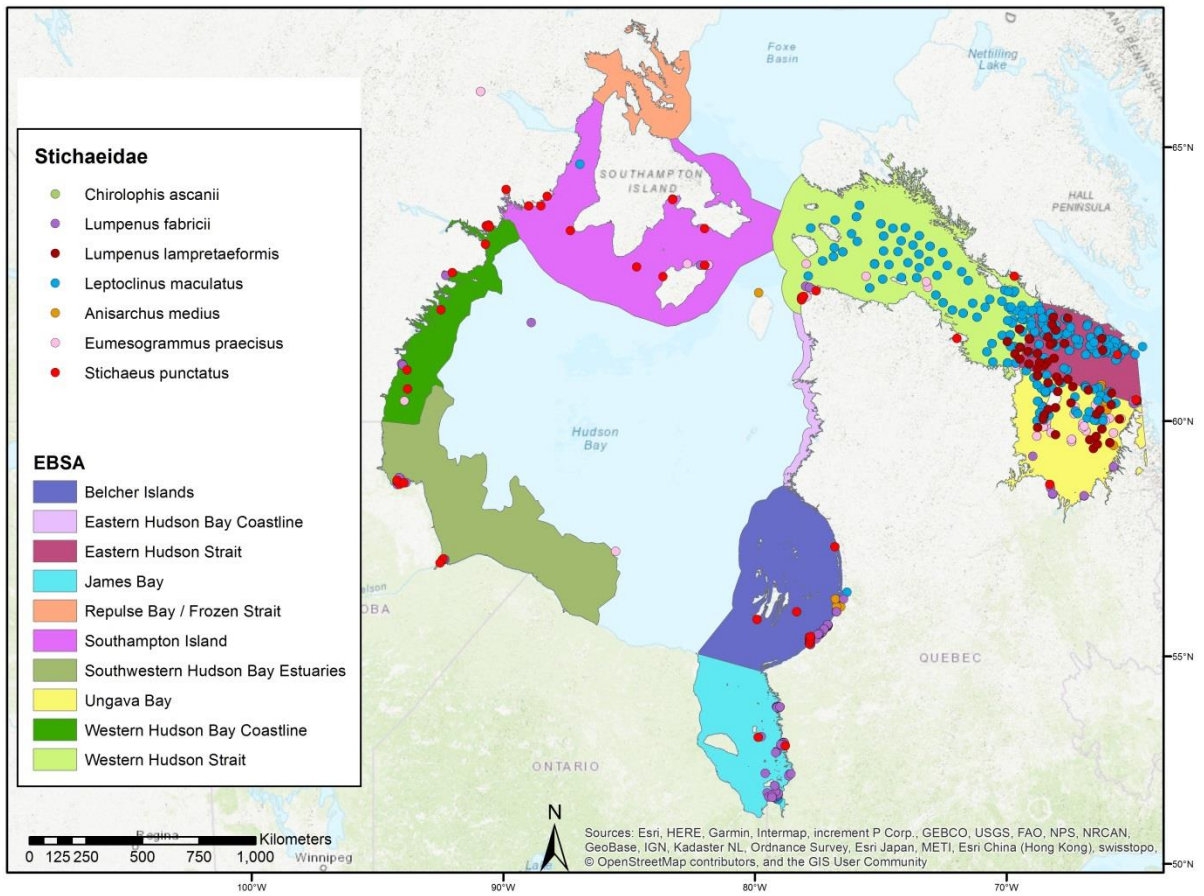


Figure 19. Fish species distribution for family Stichaeidae.

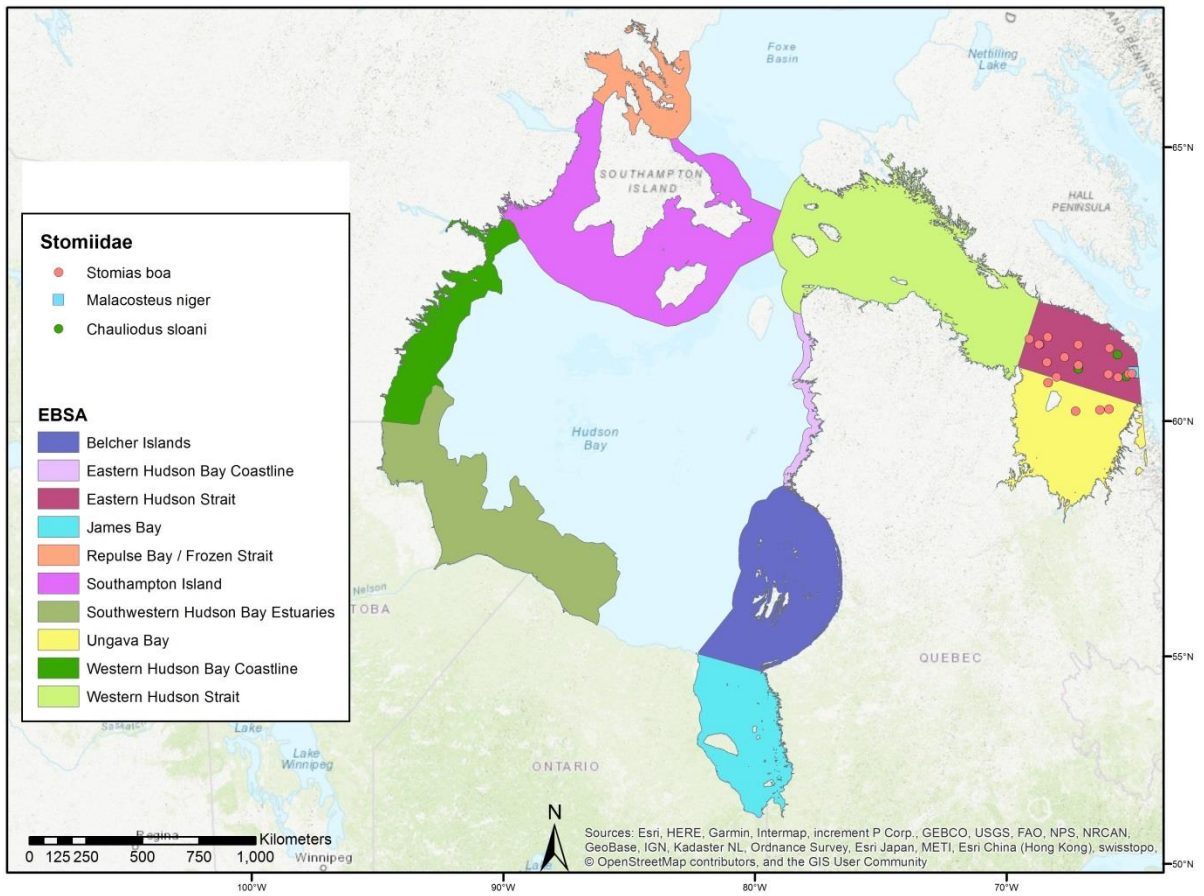


Figure 20. Fish species distribution for family Stomiidae.

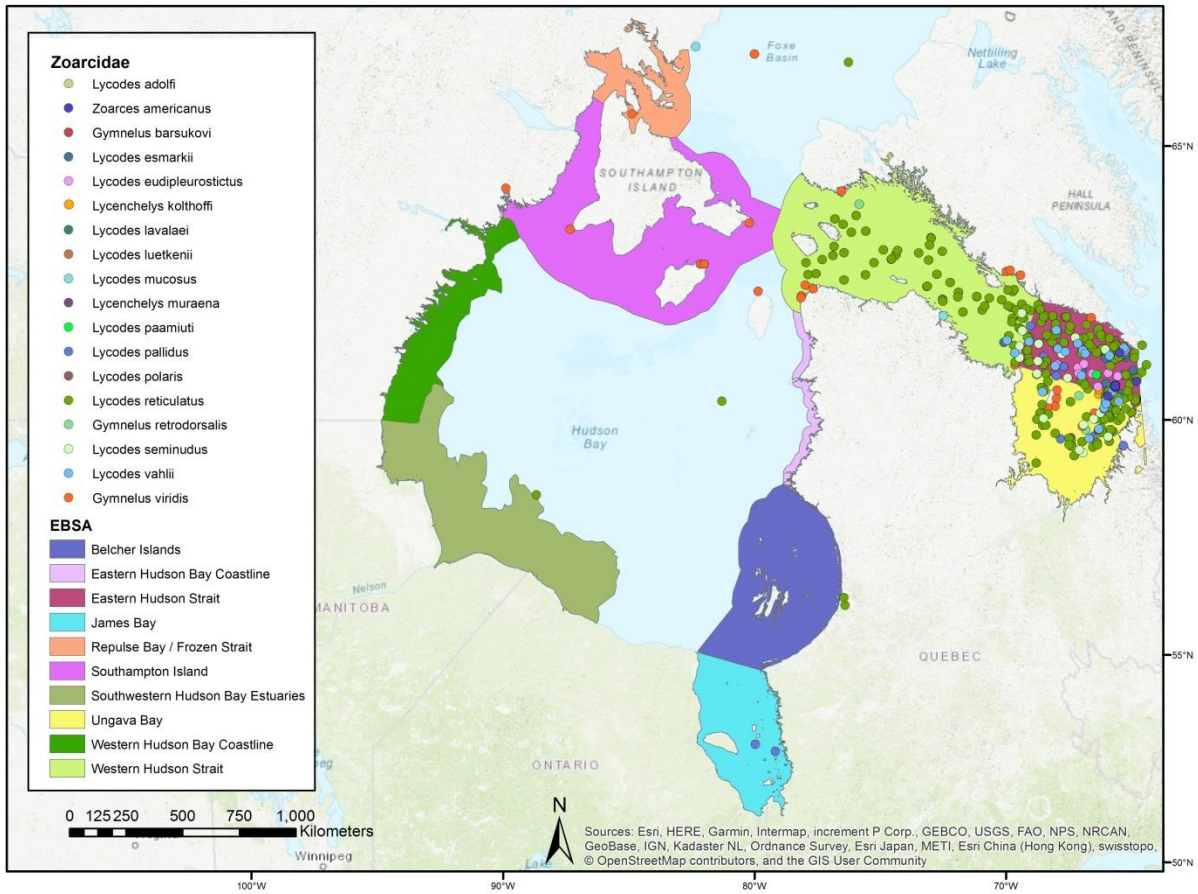


Figure 21. Fish species distribution for family Zoarcidae.

BIRDS

The SI EBSA is home to large aggregations of seabirds such as two colonies of Thick-Billed Murres on Coats Island and the largest single colony of Common Eiders in Nunavut. A list of bird species recorded in and around the SI EBSA is provided in Table 5 (Béchet et al. 2000, Gaston and Ouellet 1997, Godfrey 1986, Johnston and Pepper 2009, Knight Piésold 2010, Latour et al. 2008, Nunavut 2012, 2014).

Table 5. Bird species reported in and near SI EBSA.

Family	Common Name	Scientific Name	Location ²	Source(s)
Alcidae	Razorbill	<i>Alca torda</i>	CI	Nunavut 2014
Alcidae	Black Guillemot	<i>Cephus grylle</i>	FB, CI, UB, WI, BEI, SI	Knight Piésold 2010; Nunavut 2012, 2014
Alcidae	Thick-billed Murre	<i>Uria lomvia</i>	CI	Nunavut 2014; Godfrey 1986
Alcidae	Atlantic Puffin	<i>Fratercula arctica</i>	WI	Nunavut 2014
Anatidae	Northern Pintail	<i>Anas acuta</i>	PCI, CI, EB, SI, CH	Gaston and Ouellet 1997; Johnston and Pepper 2009; Nunavut 2014; Godfrey 1986
Anatidae	American Wigeon	<i>Anas americana</i>	EB	Nunavut 2014
Anatidae	Blue-winged Teal	<i>Anas discors</i>	EB	Nunavut 2014
Anatidae	Mallard	<i>Anas platyrhynchos</i>	EB	Nunavut 2014
Anatidae	Northern Shoveler	<i>Anas clypeata</i>	UB	Nunavut 2014
Anatidae	Brant	<i>Branta bernicla</i>	EB, SI, CI, RB	Nunavut 2012, 2014; Godfrey 1986
Anatidae	Barnacle Goose	<i>Branta leucopsis</i>	RB, UB	Nunavut 2012, 2014
Anatidae	Canada Goose	<i>Branta canadensis</i>	UB, CI, RB	Nunavut 2012, 2014; Godfrey 1986
Anatidae	Cackling Goose	<i>Branta hutchinsii</i>	GPK, PCI, EB, RB	Latour et al. 2008; Nunavut 2012
Anatidae	Snow Goose	<i>Chen caerulescens</i>	SI, CI, UB, RB	Nunavut 2012, 2014; Godfrey 1986
Anatidae	Ross's Goose	<i>Chen rossii</i>	EB, UB, BRD, RB	Nunavut 2012, 2014; Godfrey 1986
Anatidae	Long-tailed Duck	<i>Clangula hyemalis</i>	FB, BEI, CI, DI	Nunavut 2014; Godfrey 1986
Anatidae	Tundra Swan	<i>Cygnus columbianus</i>	BI, SI, MP, CI	Godfrey 1986
Anatidae	Trumpeter Swan	<i>Cygnus buccinator</i>	RB	Nunavut 2012, 2014
Anatidae	Red-breasted Merganser	<i>Mergus serrator</i>	BI, CI, EB, CH	Nunavut 2014
Anatidae	King Eider	<i>Somateria spectabilis</i>	FB, SI, CI	Nunavut 2012, 2014; Godfrey 1986

Family	Common Name	Scientific Name	Location²	Source(s)
Anatidae	Common Eider	<i>Somateria mollissima</i>	FB, CH, SI	Nunavut 2012, 2014
Charadriidae	Semipalmated Plover	<i>Charadrius semipalmatus</i>	FB, SI, CI, EB, CH	Godfrey 1986; Nunavut 2014
Charadriidae	American Golden-Plover	<i>Pluvialis dominica</i>	FB	Godfrey 1986
Charadriidae	Black-bellied Plover	<i>Pluvialis squatarola</i>	SI	Godfrey 1986
Gaviidae	Common Loon	<i>Gavia immer</i>	BI	Godfrey 1986
Gaviidae	Pacific Loon	<i>Gavia pacifica</i>	FB, CI, SI	Nunavut 2014; Godfrey 1986
Gaviidae	Red-throated Loon	<i>Gavia stellata</i>	FB, EB, BEI, UB, SI, CI	Nunavut 2014; Godfrey 1986
Laridae	Herring Gull	<i>Larus argentatus</i>	FB, CH, SI, CI	Godfrey 1986; Nunavut 2014
Laridae	Ring-billed Gull	<i>Larus delawarensis</i>	EB	Nunavut 2014
Laridae	Iceland Gull	<i>Larus glaucooides</i>	CI, SI	Nunavut 2014; Godfrey 1986
Laridae	Glaucous Gull	<i>Larus hyperboreus</i>	CI, SI	Nunavut 2014; Godfrey 1986
Laridae	Thayer's Gull	<i>Larus thayeri</i>	SI, CI	Nunavut 2014; Godfrey 1986
Laridae	Ivory Gull ⁴	<i>Pagophila eburnea</i>	Offshore	Knight Piésold 2010
Laridae	Ross's Gull ⁵	<i>Rhodostethia rosea</i>	PCI, RB	Béchet et al. 2000; Johnston and Pepper 2009; Nunavut 2012
Laridae	Arctic Tern	<i>Sterna paradisaea</i>	FB, SI, CI, EB, BEI, CH	Godfrey 1986; Nunavut 2012, 2014
Laridae	Sabine's Gull	<i>Xema sabini</i>	FB, SI, CI, EB	Godfrey 1986; Nunavut 2014
Procellariidae	Northern Fulmar	<i>Fulmarus glacialis</i>	Offshore, ES, FB, SI	McKinnon et al. 2009; Knight Piésold 2010; Nunavut 2012, 2014
Scolopacidae	Spotted Sandpiper	<i>Actitis macularius</i>	BEI, CI	Nunavut 2014
Scolopacidae	Ruddy Turnstone	<i>Arenaria interpres</i>	FB, SI, CI, EB	Godfrey 1986; Nunavut 2014
Scolopacidae	Sanderling	<i>Calidris alba</i>	SI, MP, JB	Godfrey 1986; Nunavut 2014
Scolopacidae	Dunlin	<i>Calidris alpina</i>	SI, PCI, CI, UB	Godfrey 1986; Johnston and Pepper 2009; Nunavut 2014
Scolopacidae	Baird's Sandpiper	<i>Calidris bairdii</i>	SI	Godfrey 1986
Scolopacidae	Red Knot ³	<i>Calidris canutus</i>	PCI, SI, CI, EB	Johnston and Pepper 2009; Nunavut 2014; Godfrey 1986
Scolopacidae	White-rumped Sandpiper	<i>Calidris fuscicollis</i>	FB, SI, UB	Godfrey 1986; Nunavut 2014
Scolopacidae	Purple Sandpiper	<i>Calidris maritima</i>	FB, SI, CL, EB	Godfrey 1986; Forbes et al. 1992; Johnston and Pepper 2009; Nunavut 2014
Scolopacidae	Pectoral Sandpiper	<i>Calidris melanotos</i>	PCI, MP, SI, CI	Johnston and Pepper 2009; Godfrey 1986

Family	Common Name	Scientific Name	Location ²	Source(s)
Scolopacidae	Semipalmated Sandpiper	<i>Calidris pusilla</i>	FB, SI, CI	Godfrey 1986; Nunavut 2014
Scolopacidae	Red Phalarope	<i>Phalaropus fulicarius</i>	PCI, BI, SI, MP, CI, EB	Godfrey 1986; Johnston and Pepper 2009; Nunavut 2014
Scolopacidae	Red-necked Phalarope	<i>Phalaropus lobatus</i>	SI, BI, CI, UB	Godfrey 1986; Nunavut 2012, 2014
Scolopacidae	Whimbrel	<i>Numenius phaeopus</i>	CI	Nunavut 2014
Stercorariidae	Long-tailed Jaeger	<i>Stercorarius longicaudus</i>	SI, CI, CH, RB	Nunavut 2012, 2014; Godfrey 1986
Stercorariidae	Parasitic Jaeger	<i>Stercorarius parasiticus</i>	SI, CI, RB	Nunavut 2012; Godfrey 1986
Stercorariidae	Pomarine Jaeger	<i>Stercorarius pomarinus</i>	FB, SI, EB, RB	Johnston and Pepper 2009; Nunavut 2012, 2014; Godfrey 1986

¹This table is not meant to be a comprehensive list of all species occurring in the SI EBSA but rather a reasonably complete list of all the species that occur annually in the area, and that are uncommon to abundant. Species of rare occurrence generally are absent from this list.

²Primarily indicates nesting distribution; offshore occurrence and distribution during migration are not well known. SI = Southampton Island; BI = Baffin Island; GPK = Great Plain of the Koukdjuak, BI; EB = East Bay, SI; PCI = Prince Charles Island; FB = widespread throughout Foxe Basin; MP = Melville Peninsula; CI = Coats Island, DS = Digges Sound; WI = Walrus Island; UB = Ujagasukjualuk Bay, SI; ES = Evans Strait; BEI = Bencas Island; JB = Junction Bay, SI; BRD = Boas River Delta, SI; RB = Repulse Bay; CH = Coral Harbour, SI.

³COSEWIC: Endangered (*rufa* subspecies).

⁴SARA: Schedule 1-Endangered; COSEWIC: Endangered.

⁵SARA: Schedule 1 Threatened; COSEWIC: Threatened.

REFERENCES

- Able, K.W., and McAllister, D.E. 1980. Revision of the snailfishes, genus *Liparis*, from Arctic Canada. *Can. Bull. Fish. Aquat. Sci.* 208: 52 p.
- AMAP (Arctic Monitoring and Assessment Programme), CAFF (Conservation of Arctic Flora and Fauna) and SDWG (Sustainable Development Working Group). 2013. Identification of Arctic marine areas of heightened ecological and cultural significance: Arctic Marine Shipping Assessment (AMSA) Ilc. 116 p.
- Anderson, J. T., Roff, J. C., and Gerrath, J. 1981. The diatoms and dinoflagellates of Hudson Bay. *Can. J. Fish. Aquat. Sci.* 59: 1793:1810.
- Atkinson, E.G., and Wacasey, J.W. 1989a. [Benthic invertebrates collected from Hudson Bay, Canada, 1953 to 1965](#). *Can. Dat. Rep. Fish. Aquat. Sci.* 744: iv + 121 p.
- Atkinson, E.G., and Wacasey, J.W. 1989b. [Benthic invertebrates collected from Hudson Strait, Foxe Channel and Foxe Basin, Canada, 1949 to 1970](#). *Can. Dat. Rep. Fish. Aquat. Sci.* 746: iv + 98 p.
- Béchet, A., Martin, J.-L., Meister, P., and Raboum, C. 2000. A second breeding site for Ross's Gull (*Rhodostethia rosea*) in Nunavut, Canada. *Arctic*. 53(3): 234–236. .Bursa, A.S. 1961a. The annual oceanographic cycle at Igloolik in the Canadian Arctic. II: The phytoplankton. *J. Fish. Res. Bd. Can.* 18: 563–615.
- Bursa, A. S. 1961b. Phytoplankton of the Calanus expeditions in Hudson, Bay, 1953 and 1954. *J. Fish. Res. Bd. Can.* 18: 51–83.
- Calder, D.R. 1970. Thecate hydroids from the shelf waters of northern Canada. *J. Fish. Res. Bd. Can.* 27-: 1501–1547.
- Coad, B.W., and Reist, J.D. 2018. *Marine Fishes of Arctic Canada*. University of Toronto Press. 618 p.
- Coad, B.W., and Reist, J.D. 2004. [Annotated list of the Arctic marine fishes of Canada](#). *Can. MS Rep. Fish. Aquat. Sci.* 2674: iv + 112 p.
- Cobb, D.G. 2011. [Identification of Ecologically and Biologically Significant Areas \(EBSAs\) in the Canadian Arctic](#). DFO Can. Sci. Advis. Sec. Res. Doc. 2011/070. vi + 38 p.
- DFO. 2011. [Identification of Ecologically and Biologically Significant Areas \(EBSA\) in the Canadian Arctic](#). DFO Can. Sci. Advis. Sec. Sci. Advis. Rep. 2011/055. 40 p.
- Estrada, R., Harvey, M., Gosselin, M., Starr, M., Galbraith, P. S., and Straneo, F. 2012. Late-summer zooplankton community structure, abundance, and distribution in the Hudson Bay System (Canada) and their relationships with environmental conditions, 2003–2006. *101: 121–145*.
- Forbes, G., Robertson, K., Ogilvie, C., and Seddon, L. 1992. Breeding densities, biogeography and nest depredation of birds on Igloolik Island, N.W.T. *Arctic*. 45(3): 295–303.
- Froese, R., and Pauly, D. (eds.). 2017. [FishBase](#). (accessed 27 September 2017).

- Gaston, A.J., and Ouellet, H. 1997. Birds and mammals of Coats Island, N.W.T. Arctic. 50(2): 101–118.
- Godfrey, W.E. 1986. The birds of Canada. Ottawa National Museums of Canada, Ottawa, ON. 595 p.
- Grainger, E.H. 1959. The annual oceanographic cycle at Igloolik in the Canadian Arctic. 1. The zooplankton and physical and chemical Observations. J. Fish. Res. Bd. Can. 16: 453–501.
- Grainger, E.H. 1962. Zooplankton of Foxe Basin in the Canadian Arctic. J. Fish. Res. Bd. Can. 19: 377–400.
- Harvey, M., Therriault, J.-C., and Simard, N. 1997. Late-summer distribution of phytoplankton in relation to water mass characteristics in Hudson Bay and Hudson Strait (Canada). Can. J. Fish. Aquat. Sci. 54: 1937–1952.
- Harvey, M., Therriault, J.-C., and Simard, N. 2001. Hydrodynamic control of late summer species composition and abundance of zooplankton in Hudson Bay and Hudson Strait (Canada). J. Plank. Res. 23: 481–496.
- Johnston, V.H., and Pepper, S.T. 2009. The birds of Prince Charles Island and Air Force Island, Foxe Basin, Nunavut. Occasional Paper No. 117. Canadian Wildlife Service, Environment Canada. 52 p.
- Knight Piésold Ltd. 2010. Baffinland Iron Mines Corporation. 2006–2008 marine birds environmental baseline study summary report Mary River Project. Volume 6, Appendix 6E-2.
- Latour, P.B., Leger, J., Hines, J.E., Mallory, M.L., Mulders, D.L., Gilchrist, H.G., Smith, P.A., and Dickson, D.L. 2008. Key migratory bird terrestrial habitat sites in the Northwest Territories and Nunavut. Canadian Wildlife Service, Occasional Paper No.114: 120 p.
- Lee, R.K.S. 1980. A catalogue of the marine algae of the Canadian Arctic. National Museum of Natural Sciences, Publications in Botany No. 9, National Museums Canada, Ottawa. 82 p.
- Legendre, L., and Simard, Y. 1979. Océanographie biologique estivale et phytoplancton dans le sudest de la baie d’Hudson. Mar. Biol. 52 : 11–22.
- Loewen, T. N., Hornby, C.A , Johnson, M., Chambers, C., Dawson, K., MacDonell, D., Bernhardt, W., Gnanapragasam, R. and, Choy, E. 2020. [Ecological and Biophysical Overview of the Southampton proposed Area of Interest for the Southampton Island Ecologically and Biologically Significant Area](#). DFO Can. Sci. Advis. Sec. Res. Doc. 2020/032. vi + 96 p.
- Mecklenburg, C.W., Møller, P.R., and Steinke, D. 2011. Biodiversity of arctic marine fishes: taxonomy and zoogeography. Mar. Biodiv. 41: 109–140.
- McKinnon, L., Gilchrist, H.G., and Fifield, D. 2009. A pelagic seabird survey of arctic and sub-arctic Canadian water during fall. Mar. Ornithol. 37: 77–84.
- Nunavut. 2012. Nunavut Coastal Resource Inventory. Repulse Bay. Nunavut Department of Environment, Iqaluit, NU. 126 p.

- Nunavut. 2014. Nunavut Coastal Resource Inventory. Coral Harbour. Nunavut Department of Environment, Iqaluit, NU. 170 p.
- Ponton, D., and Fortier, L. 1992. Vertical distribution and foraging of marine fish larvae under the ice cover of southeastern Hudson Bay. *Mar. Ecol. Prog. Ser.* 81(3): 215-227.
- Ponton, D., Gagne, J.S., and Fortier, L. 1993. Production and dispersion of freshwater, anadromous, and marine fish larvae in and around a river plume in subarctic Hudson Bay. Canada. *Polar Biol.* 13: 321–331.
- Roff, J., and Legendre, L. 1986. Physico-chemical and biological oceanography of Hudson Bay. *In Canadian Inland Seas*. Edited by I. Martini. Elsevier, Amsterdam. pp. 265–292.
- Stewart, D.B., and Bernier, L.M.J. 1984. An aquatic resource survey of Melville Peninsula, Southampton Island, and the northeastern District of Keewatin, Northwest Territories. Lands Directorate of Environment Canada and Northern Environment Branch of Indian and Northern Affairs, Land Use Information Series, Background Report No. 4. 144 p.
- Stewart, D.B., and Lockhart, W.L. 2005. An overview of the Hudson Bay marine ecosystem. *Can. Tech. Rep. Fish. Aquat. Sci.* 2586. vi + 487 p.
- Thomas, T.A. 1999. Behaviour and habitat selection of Bowhead Whales (*Balaena mysticetus*) in northern Foxe Basin, Nunavut. Thesis (M.Sc.) University of Manitoba, MB. 107 p.
- Walters, W. 1955. Fishes of western Arctic America and eastern Arctic Siberia. Taxonomy and zoogeography. *Bull. Am. Mus. Nat. Hist.* 106(5): 368 p.