

## **Preliminary Study of Malacofauna of Maxwell Bay, South Shetland Islands, Antarctica**

**Byung Lae Choe, Jong Rak Lee, In-Young Ahn\* and Hosung Chung\***

*Department of Biology, Sung Kyun Kwan University, Suweon, Chunchun-Kong #301, 440-746, Korea*

*\*Polar Research Center, Korea Ocean Research & Development Institute,  
Ansan P.O. Box 29, Seoul 425-600, Korea*

남극 남셰틀랜드군도 맥스웰만의 연체동물상에 관한 기초연구

최병래 · 이종락 · 안인영\* · 정호성\*

성균관대학교 이과대학 생물학과  
\*한국해양연구소 극지연구센터

**Abstract:** A preliminary study of Antarctic mollusks was conducted as a part of an evaluation of program of environmental conditions and conservation at Maxwell Bay, South Shetland Islands, Antarctica. Twenty-three species of 1 chiton, 12 gastropods, and 9 bivalves were identified and redescribed.

**Key words:** South Shetland Islands, Maxwell Bay, mollusks, taxonomy

요약: 남극 환경 특성 및 보존에 관한 연구의 일환으로 남셰틀랜드군도 맥스웰만에 서식하는 연체동물상에 대한 기초조사를 실시하였다. 조사결과 다판류 1종, 복족류 12종, 이매패류 9종 등, 총 23종이 동정되어 이를 재기재하였다.

주요어: 남셰틀랜드군도, 맥스웰만, 연체동물, 분류

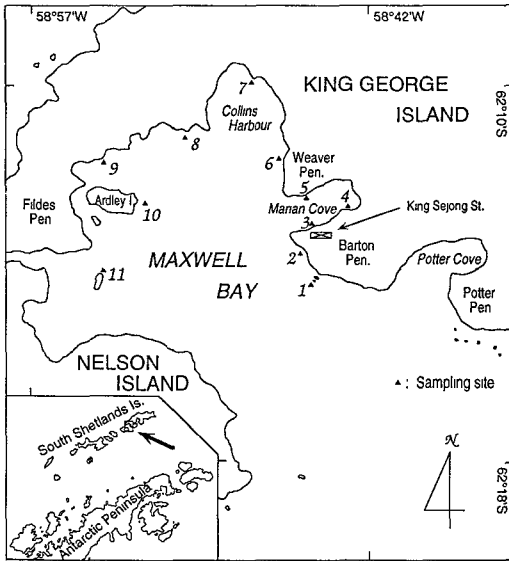
### **INTRODUCTION**

Antarctic mollusks have been studied by many authorities at about the same time as the British Antarctic ("Terra Nova") Expedition, 1910 [Smith (1915: cited from Dell, 1990), Massy (1920), Eales (1923)], such as Smith (1885), Wafson (1886), Haddon (1886). Recent studies have been conducted by Dell (1964, 1990) and many others. On the contrary, however, nothing about the fauna has been published on mollusks collected by the Korean Antarctic Research Expeditions. In this paper, Antarctic mollusks are shown to be composed of 23 species including 1 species of chiton,

12 gastropods, and 9 bivalves. Another 13 species of our collection, assigned to 6 species of Patellids, 3 mesogastropods, and 4 opisthobranchs, remain to be analyzed in future studies.

### **MATERIALS AND METHODS**

The present study was based on the materials collected by members of the sixth Korea Antarctic Expedition from January 1992 to February 1993. All the molluscan specimens were mainly gathered by scuba diving from intertidal zones to a depth of about 30m at 11 stations (Fig. 1) around the Maxwell Bay. All the specimens were fixed in seawater buffered 10% formalin solution and pre-



**Fig. 1.** A location map of sampling stations at Maxwell Bay, South Shetland Islands.

served in 90% ethyl alcohol, later, according to Lincoln & Sheals (1979). We identified specimens on the basis of morphological characteristics under a zoom stereomicroscope (WILD M10). The classification of Mollusca was principally based upon those of Dell (1990), Bernard et al. (1993), and Higo & Goto (1993).

## RESULTS

List of Mollusks from Maxwell Bay, South Shetland Islands, Antarctica.

Phylum Mollusca Linnaeus, 1758  
 Class Polyplacophora Gray, 1821  
 Order Neoloricata Bergenhayn, 1955  
 Suborder Ischnochitonina Bergenhayn, 1930  
 Family Ischnochitonidae Dall, 1899  
 Subfamily Lepidochitoninae Iredale, 1914  
 Genus *Tonicina* Thiele, 1906

- 1. *Tonicina zschau* (Pfeffer, 1886)**  
 Class Gastropoda Cuvier, 1797  
 Suborder Prosobranchia Milne-Edwards, 1848  
 Order Archaeogastropoda Thiele, 1925  
 Suborder Trochina Cox & Knight, 1960  
 Superfamily Trochoidea Rafinesque, 1815  
 Family Trochidae Rafinesque, 1815  
 Subfamily Margaritinae Stoliczka, 1868  
 Genus *Margarites* Gray, 1847

- 2. *Margarites antarctica* (Lamy, 1905)**  
 Order Mesogastropoda Thiele, 1925  
 Superfamily Cerithioidea  
 Family Cerithiopsidae H. & A. Adams, 1853  
 Genus *Clathropsis* Laseron, 1955
- 3. *Clathropsis mellita* Laseron, 1955**  
 Family Trichotropidae Gray, 1850  
 Genus *Torellia* Jeffreys, 1867
- 4. *Torellia* sp.**  
 Order Heterogastropoda  
 Family Naticidae Forbes, 1838  
 Genus *Amauropsis* Murch, 1857
- 5. *Amauropsis* sp.**  
 Family Eulimidae Troschel, 1853  
 Genus *Melanella* Bowdich, 1882
- 6. *Melanella* sp.**  
 Order Neogastropoda Wenz, 1938  
 Superfamily Muricoidea Rafinesque, 1815  
 Family Muricidae Rafinesque, 1815  
 Subfamily Trophoninae Cossmann, 1903  
 Genus *Trophon* Montfort, 1810
- 7. *Trophon minutus* Strebel, 1907**
- 8. *Trophon brevispira* Martens, 1885**  
 Family Buccinidae Rafinesque, 1815  
 Genus *Neobuccinum* Smith, 1877
- 9. *Neobuccinum eatoni* (Smith, 1875)**  
 Genus *Prosipho* Thiele, 1912
- 10. *Prosipho hedleyi* Powell, 1958**
- 11. *Prosipho crassicosatus* (Melvill & Standen, 1907)**  
 Genus *Proneptunea* Thiele, 1912
- 12. *Proneptunea rufa* Oliver & Picken, 1984**  
 Family Volutidae Rafinesque, 1815  
 Subfamily Zidoninae H. & A. Adams, 1853  
 Genus *Harpovoluta* Thiele, 1912
- 13. *Harpovoluta charcoti* (Lamy, 1910)**  
 Class Bivalvia Linnaeus, 1758  
 Subclass Palaeotaxodonta Korobkov, 1954  
 Order Nuculoida Dall, 1889  
 Superfamily Nuclanoidea H. & A. Adams, 1858  
 Family Sareptidae Stoliczka, 1871  
 Subfamily Yoldiinae Habe, 1977  
 Genus *Yoldia* Möller, 1842  
 Subgenus *Aequiyoldia* Soot-Ryen, 1951
- 14. *Yoldia (Aequiyoldia) eightsi* (Couthouy in Jay, 1839)**  
 Subclass Pteriomorpha Beurlen, 1944  
 Order Arcoidea Stoliczka, 1871  
 Superfamily Limosoidea Dall, 1895

- Family Philobryidae Bernard, 1897  
Genus *Philobrya* Carpenter, 1872
15. *Philobrya sublaevis* Pelseneer, 1903
16. *Philobrya wandelensis* Lamy, 1906  
Genus *Adacnarca* Pelseneer, 1903
17. *Adacnarca nitens* Pelseneer, 1903  
Genus *Lissarca* Smith, 1877
18. *Lissarca notorcadensis* Melvill & Standen, 1907
19. *Lissarca miliaris* (Philippi, 1845)  
Order Limoida Waller, 1978  
Superfamily Limoidea Rafinesque, 1815  
Family Limidae Rafinesque, 1815  
Genus *Limatula* Wood, 1839  
Subgenus *Antarctolima* Habe, 1977
20. *Limatula (Antarctolima) ovalis* (Thiele, 1912)
21. *Limatula (Antarctolima) pygmaea* (Philippi, 1845)  
Subclass Heterodonta Neumayr, 1884  
Order Veneroida H. & A. Adams, 1856  
Family Limidae Rafinesque, 1815  
Superfamily Cyamioidea  
Family Cyamiidae Philippi, 1845  
Genus *Cyamiomactra* Bernard, 1897
22. *Cyamiomactra laminifera* (Lamy, 1906)  
Subclass Anomalodesmata Dall, 1889  
Order Pholadomyoida Newell, 1965  
Superfamily Pandoroidea Rafinesque, 1815  
Family Laternulidae Hedley, 1918  
Genus *Laternula* Röding, 1798
23. *Laternula elliptica* (King & Broderip, 1831)

## SYSTEMATIC ACCOUNT

Phylum Mollusca Linnaeus, 1758  
Class Polyplacophora Gray, 1821  
Order Neoloricata Bergenhayn, 1955  
Suborder Ischnochitonina Bergenhayn, 1930  
Family Ischnochitonidae Dall, 1899  
Subfamily Lepidochitoninae Iredale, 1914  
Genus *Tonicina* Thiele, 1906

### 1. *Tonicina zschau* (Pfeffer, 1886) [Pl. 1, Figs. 1, 2]

*Chiton zschau* Pfeffer, 1886, Polyplacophora, p.105, pl.3, fig.2 (cited from Kaas & Van Belle, 1985).

*Tonicia zschau*: Pilsbry, 1893, p.204, pl.40, fig.12; Dell, 1964, p.116; Kaas & Van Belle, 1985,

pp.149-151, fig.68

**Material examined:** 3 inds. (abbreviation of individuals), Stn. (abbreviation of Station) 6 (1 Feb. 1993); 2 inds., Stn. 10 (29 Jan. 1993).

**Description:** Body small in size, elongated, length more than twice the width. Valves solid, beaked, with smooth and narrow girdle: girdle grooved into characteristic median portion, arranged with corpuscles on dorsal side. Tegmentum of all valves with microgranulose, concentric growth lines close set, neatly discernible on end valves and lateral areas of intermediate valves, weaker on central areas.

**Type locality:** South Georgia.

**Distribution:** South Georgia, South Shetland Ia., Palmer I., Booth I., Petermann I.

Class Gastropoda Cuvier, 1797

Subclass Prosobranchia Milne-Edwards, 1848

Order Archaeogastropoda Thiele, 1925

Suborder Trochina Cox & Knight, 1960

Superfamily Trochoidea Rafinesque, 1815

Family Trochidae Rafinesque, 1815

Subfamily Margaritinae Stoliczka, 1868

Genus *Margarites* Gray, 1847

### 2. *Margarites antarctica* (Lamy, 1905) [Pl. 1, Fig. 3]

*Margarita antarctica* Lamy, 1905, Bull. Mus. Hist. nat. 11, p.481, fig.5 (cited from Arnaud, 1972).

*Margarella antarctica*: Powell, 1951, Discovery Rep. 26, p.98, fig. G9 (radula) (cited from Arnaud, 1972).

**Margarites antarctica**: Arnaud, 1972, p.430, fig.1: Dell, 1990, fig.178.

**Material examined:** 1 ind., Stn. 1 (9 Jan. 1993); 4 inds., Stn. 1 (30 Jan. 1993); 2 inds., Stn. 1 (17 Feb. 1993); many inds., Stn. 2 (1 Feb. 1993); 10 inds., Stn. 3 (3 Jan. 1993); 2 inds., Stn. 4 (26 Jan. 1993); many inds., Stn. 5 (30 Dec. 1992); many inds., Stn. 6 (6 Jan. 1992); 9 inds., Stn. 6 (17 Jan. 1993); many inds., Stn. 7 (7 Jan. 1993); 2 inds., Stn. 8 (17 Feb. 1993); 7 inds., Stn. 9 (29 Jan. 1993); 8 inds., Stn. 10 (29 Jan. 1993); many inds., Stn. 11 (1 Feb. 1993).

**Description:** Shell whitish gray, minute in size, rather thin, extremely low and wide cone-shaped. Whorls 4, including smooth protoconch of 1 and

1/2 whorls not clearly distinguished from each other. Exterior surface somewhat smooth with fine regular growth lines and coarse irregular axial sculptured lines. Large circular aperture with fragile lips, more than 1/3 of shell's length.

**Type locality:** South Sandwich Is.?

**Distribution:** Bellinghausen Sea, South Sandwich Is, Orcades Is., South Shetland Is.

Order Mesogastropoda Thiele, 1925  
 Superfamily Cerithioidea  
 Family Cerithiopsidae H. & A. Adams, 1853  
 Genus *Clathropsis* Laseron, 1955

**3. *Clathropsis mellita* Laseron, 1955 [Pl. 1, Fig. 4]**  
*Clathropsis mellita* Laseron, 1955, p.160, Fig. 11.

**Material examined:** 1 ind., Stn. 1 (17 Feb. 1993).

**Description:** Shell towering: whorls 9, destroyed except for body whorl during identification. Body whorl intercrossing 3 spiral and 28 axial ribs; axial ribs continuing to base.

**Type locality:** Bundaberg, Queensland in Australia.

**Distribution:** Maxwell Bay, Queensland in Australia.

Family Trichotropidae Gray, 1850  
 Genus *Torellia* Jeffreys, 1867

**4. *Torellia* sp. [Pl. 1, Fig. 5]**

**Material examined:** 1 ind., Stn. 1 (9 Jan. 1993); 4 inds., Stn. 1 (30 Jan. 1993); 1 ind., Stn. 1 (17 Feb. 1993); 2 inds., Stn. 2 (1 Feb. 1993); 2 inds., Stn. 3 (3 Jan. 1993); 2 inds., Stn. 7 (7 Jan. 1993); 1 ind., Stn. 11 (1 Feb. 1993).

Order Heterogastropoda  
 Family Naticidae Forbes, 1838

Genus *Amauropsis* Mörch, 1857

**5. *Amauropsis* sp. [Pl. 1, Fig. 6]**

**Material examined:** 1 ind., Stn. 6 (5 Jan. 1992); 2 inds., Stn. 7 (7 Jan. 1993).

Family Eulimidae Troschel, 1853  
 Genus *Melanella* Bowdich, 1882

**6. *Melanella* sp. [Pl. 1, Fig. 7]**

**Material examined:** 2 inds., Stn. 5 (17 Feb. 1993); 2 inds., Stn. 7 (7 Jan. 1993); 2 inds., Stn. 8 (17 Feb. 1993).

Order Neogastropoda Wenz, 1938  
 Superfamily Muricoidea Rafinesque, 1815  
 Family Muricidae Rafinesque, 1815  
 Subfamily Trophoninae Cossmann, 1903  
 Genus *Trophon* Montfort, 1810

**7. *Trophon minutus* Strebel, 1907 [Pl. 1, Fig. 8]**

*Trophon minutus* (Strebel MSS) Melville & Standen, 1907, Trans. roy. Soc. Edinb. p. 167, pl. 1, figs. 7-7a (cited from Dell, 1990); Oliver & Picken, 1984, p. 113, figs. 33a-b; Dell, 1990, pp. 203, 205, fig. 353.

*Trophon condensatus* Hedley, 1916, Reports on the Scientific Investigations British Antarctic Expedition, p. 60, pl. 9, fig. 98 (cited from Dell, 1990).

**Material examined:** 1 ind., Stn. 1 (8 Jan. 1993); 2 inds., Stn. 1 (9 Jan. 1993); 5 inds., Stn. 1 (17 Feb. 1993); 1 ind., Stn. 11 (1 Feb. 1993)

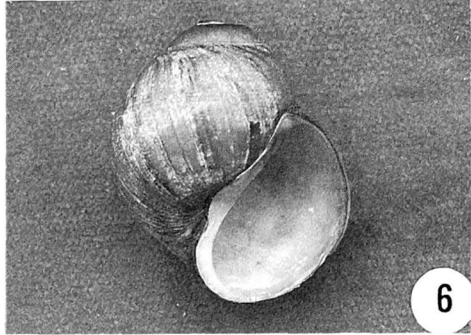
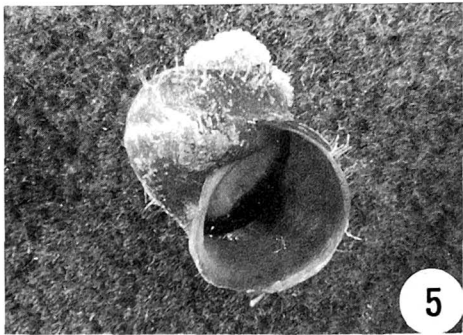
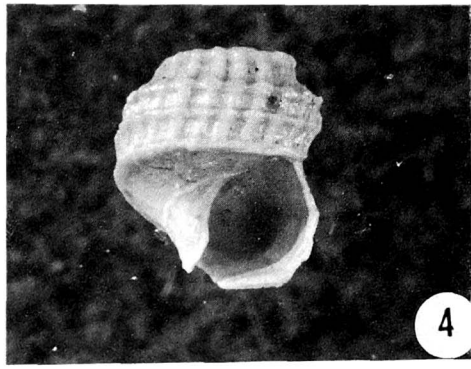
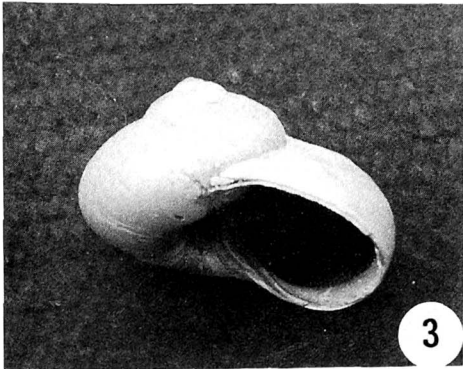
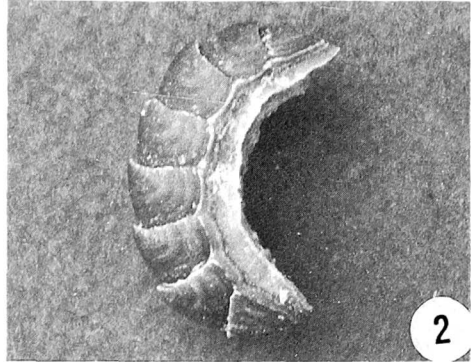
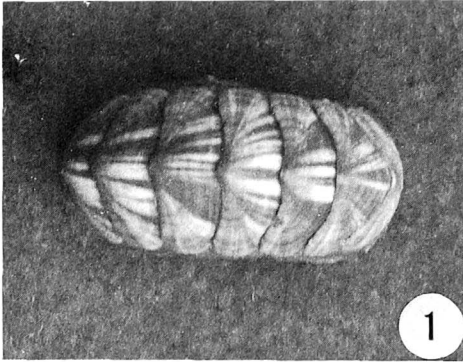
**Description:** Shell whitish gray, rather solid, with numerous strong axial lamellae. Whorls 5 including a smooth protoconch of 1-1/4 whorls with distinctive suture to form spiral staircase.

**Type locality:** ?

**Distribution:** South Shetland Is., South Orkney Is., South Sandwich Is., South Georgia Is., from off

**PLATE 1**

- Fig. 1, 2.** *Tonicina zschau* (Pfeffer, 1886) Height: 12.2mm, Width: 5.45mm  
**Fig. 3.** *Margarites antarctica* (Lamy, 1905) Height: 6.6mm, Width: 13.3mm  
**Fig. 4.** *Clathropsis mellita* Laseron, 1955 Measureless for destruction of specimen  
**Fig. 5.** *Torellia* sp. Height: 12.05mm, Width: 11.7mm  
**Fig. 6.** *Amauropsis* sp. Height: 29.3mm, Width: 25.1mm  
**Fig. 7.** *Melanella* sp. Height: 3.3mm, Width: 3.75mm  
**Fig. 8.** *Trophon minutus* Strebl, 1907. Height: 7.4mm, Width: 3.75mm



the antarctic continent from between 140°E and 170°E in 30-45m, Ross Sea, off Kerguelen Is.

**8. *Trophon brevispira* Martens, 1885 [Pl. 2, Fig. 9]**

*Trophon brevispira* Martens, 1885, Sitz. Ges. Naturf. Freunde Berlin, p. 91 (cited from Arnaud, 1972); Arnaud, 1972, p. 432; Oliver & Picken, 1984, figs. 39-40.

*Cominella modesta* (non Martens, 1885): Lamy 1906, Bull. Mus. Hist. nat. 11, p.121 (cited from Arnaud, 1972).

**Material examined:** 1 ind., Stn. 2 (1 Feb. 1993).

**Description:** Shell white, minute in size, solid, intercrossing strong axial and spiral rib becoming weaker close to protoconch. Whorls 4 including protoconch but destroyed in this specimen: body whorl get more than 3/4 of shell length.

**Type locality:** South Georgia Is.?

**Distribution:** Maxwell Bay, South Georgia I., Petermann I.

Family Buccinidae Rafinesque, 1815

Genus Neobuccinum Smith, 1877

**9. *Neobuccinum eatoni* (Smith, 1875) [Pl. 2, Fig. 10]**

*Buccinopsis eatoni*: Smith, 1875, Ann. Mag. Nat. Hist. (4) 16, p.68 (cited from Dell, 1990).

*Neobuccinum eatoni*: Arnaud, 1972, p. 431: Arnaud, 1985b, p. 109 with text fig.: Dell, 1990, pp.165-168, figs. 280-282.

**Material examined:** 1 ind., Stn. 6 (25 Jan. 1993); 3 inds., Stn. 7 (25 Jan. 1993); 9 inds., Stn. 3 (5 Jan. 1992).

**Description:** Shell medium size with dark brown

pattern over gray background. Exterior surface smooth with fine growth line on body whorl becoming pale on whorl 2 and absent thereafter. Aperture with fragile outer lip, ovoid-shaped. Operculum black brown, semi-ovoidal, chitinous, with its nucleus near siphonal canal.

**Type locality:** Coulman Island, Ross Sea.

**Distribution:** Ross Sea, Bellingshausen Sea, Antarctic Penin., South Shetland Is., South Orkney Is., South Sandwich Is., Kerguelen Is., Heard Is.

Genus *Prosipho* Thiele, 1912

**10. *Prosipho hedleyi* Powell, 1958 [Pl. 2, Fig. 11]**

*Prosipho hedleyi* Powell, 1958, B.A.N.Z. Antarctic Research Expedition 1929-1931 Reports B, 6, p.195, pl. 2, fig. 7 (cited from Dell, 1990); Dell, 1990, p. 194, fig. 327.

**Material examined:** 1 ind., Stn. 1 (1 Jan. 1993); 1 ind., Stn. 1 (30 Jan. 1993); 1 ind., Stn. 1 (17 Feb. 1993); 2 inds., Stn. 7 (7 Jan. 1993); 2 inds., Stn. 11 (1 Feb. 1993).

**Description:** Shell small, slim, fusiform, with whorls including protoconch of 2 whorls: each whorl corded with 2 strong spiral ribs, 3 in body whorl with 1 more weak rib under suture, and 6 in base.

**Type locality:** ?

**Distribution:** Ross Sea, off Antarctic Penin.

**11. *Prosipho crassicosatus* (Melvill & Standen, 1907) [Pl. 2, Fig. 13]**

*Chrysodomus (Sipho) crassicosatus* Melvill & Standen, 1907, Trans. roy. Soc. Edinb., 48, p. 138, figs. 10-10a (cited from Oliver & Picken, 1984)

*Prosipho crassicosatus*: Oliver & Picken, 1984,

**PLATE 2**

**Fig. 9.** *Trophon brevispira* Martens, 1885

Height: 11.45mm, Width: 7.7mm

**Fig. 10.** *Neobuccinum eatoni* (Smith, 1875)

Height: 51.3mm, Width: 32.45mm.

**Fig. 11.** *Prosipho hedleyi* Powell, 1958

Height: 5.9mm, Width: 2.7mm.

**Fig. 12.** *Harpovoluta charcoti* (Lamy, 1910)

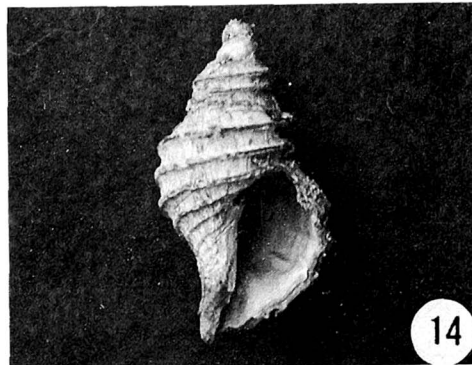
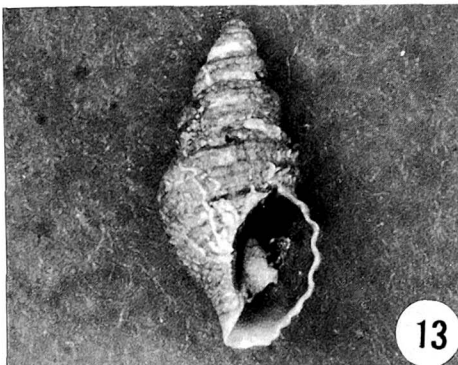
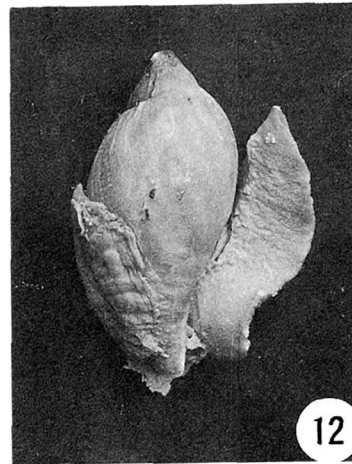
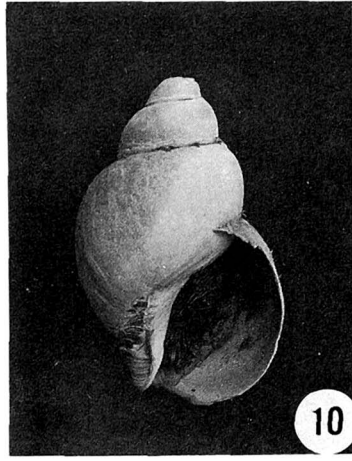
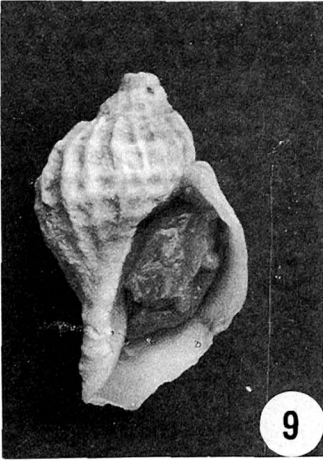
Height: 55.85mm, Width: 32.75mm.

**Fig. 13.** *Prosipho crassicosatus* (Melvill & Standen, 1907)

Height: 6.5mm, Width: 3.05mm.

**Fig. 14.** *Proneptunea rufa* Oliver & Picken, 1984

Height: 11.8mm, Width: 7.2mm.



p. 102, figs. 4a-b, 8a-b, 12, 16; Dell, 1990, figs. 317, 339-340.

**Material examined:** 1 ind., Stn. 7 (7 Jan. 1993); 22 inds., Stn. 11 (1 Feb. 1993).

**Description:** Shell small, fusiform; 5 whorls including protoconch of 1-1/2 whorls; each whorl corded with 3 strong ribs, 4 in body whorl with 1 more weak rib in suture, and 5 in base.

**Type locality:** ?

**Distribution:** Maxwell Bay, Bransfield Strait, Signy I. in South Orkney Is.

Genus *Proneptunea* Thiele, 1912.

**12. *Proneptunea rufa* Oliver & Picken, 1984 [Pl. 2, Fig. 14]**

*Proneptunea rufa* Oliver & Picken, 1984, pp.104, 106, figs. 18a-b, 20a-b, 22). Material examined: 1 ind., Stn. 1 (9 Jan. 1933); 1 ind., Stn. 8 (17 Feb. 1993).

**Description:** Shell small, pale brown, fusiform; 4 whorls including protoconch of 1-1/4 whorls; each whorl with fine axial striations, corded with 2 strong ribs, 3 in body whorl, and 6 in base decreasing in size toward siphonal canal. Aperture semi-ovoidal, with smooth paitetal callus and outer crenation.

**Type locality:** Borge Bay in Signy I.

**Distribution:** Maxwell Bay, Signy I.

Family Volutidae Rafinesque, 1815.

Subfamily Zidoninae H. & A. Adams, 1853

Genus *Harpovoluta* Thiele, 1912

**13. *Harpovoluta charcoti* (Lamy, 1910) [Pl. 2, Fig. 12]**

*Buccinum charcoti* Lamy, 1910, Bulletin du Muséum d'histoire naturelle 16, p.318 (cited from Dell, 1990).

*Harpovoluta charcoti*: Thiele, 1912, Deutsche Südopolar-Expedition 1901-1903, 13, p.217 (cited from Dell, 1990); Arnaud, 1972, p.432; Arnaud, 1985b, p.115 with text fig.; Dell, 1990, pp.218-219, figs. 365-366, 374-375, 383.

*Volutharpa charcoti*: Smith, 1915, Br. Antarct. ("Terra Nova") Exped. 1910. Nat. Hist. Rep., Zoo. 2, p.72 (cited from Dell, 1990).

*Harpovoluta vanhoeffeni* Thiele, 1912, Deutsche Südopolar-Expedition 1901-1903, 13, p.213, pl.14, fig. 1, text fig. 1 (cited from Dell, 1990).

*Harpovoluta vanhoeffeni* var. *striatula* Thiele, 1912, Deutsche Südopolar-Expedition 1901-1903, 13, p.214 (cited from Dell, 1990).

*Harpovoluta striatula*: Vayssière, 1917, Deuxième Expédition Antarctique française (1908-1910) Sciences Naturelles: Documents Scientifiques, p.36, pl. 4, figs. 50-53 (cited from Dell, 1990).

**Material examined:** 1 ind., Stn. 6 (6 Jan. 1992).

**Description:** Shell whitish yellow, medium, ovoid-shaped, thin and fragile; 4 whorls with smooth and indistinct suture. Exterior surface, on which unidentified zooantharians attached, has irregular axial growth bands. Aperture ovate, with fragile outer lip.

**Type locality:** Off South Shetland Is.

**Distribution:** South Shetland Is., South Sandwich Is., Ross Sea.

**PLATE 3**

**Fig. 15, 16.** *Yoldia (Aequiyoldia) eightsi* (Couthouy, in Jay, 1839)

Height: 11.1mm, Width: 21.05mm, Breadth: 7.45mm

**Fig. 17.** *Philobrya sublaevis* Pelseneer, 1903

Height: 9.65mm, Width: 9.45mm, Breadth: 4.65mm

**Fig. 18.** *Philobrya wandelensis* Lamy, 1906

Height: 9.6mm, Width: 4.2mm, Breadth: 2.75mm

**Fig. 19.** *Adacnarca nitens* Pelseneer, 1903

Height: 3.55mm, Width: 3.6mm, Breadth: 2.8mm

**Fig. 20.** *Lissarca notorcadensis* Melvill & Standen, 1907

Height: 5.6mm, Width: 7.0mm, Breadth: 4.1mm

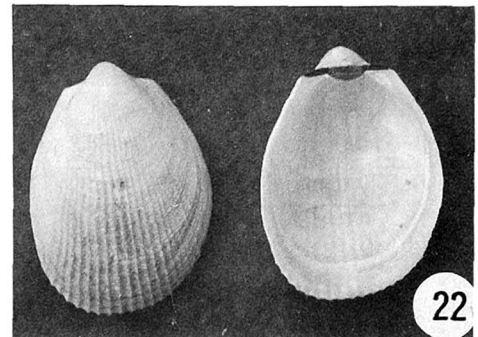
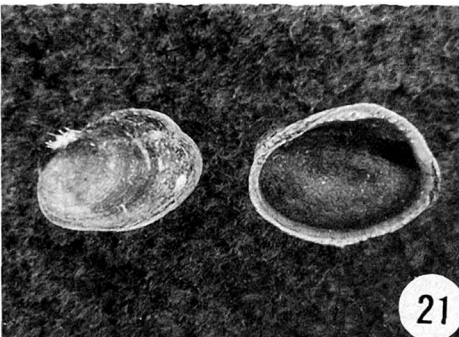
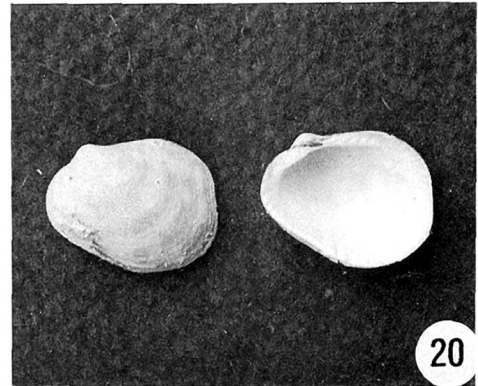
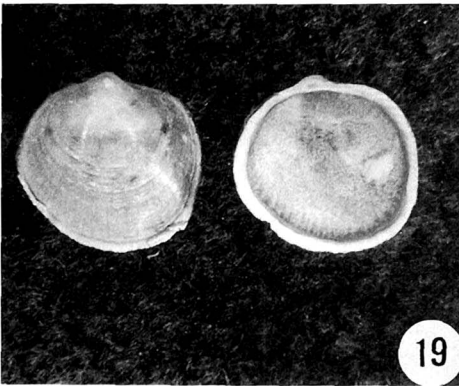
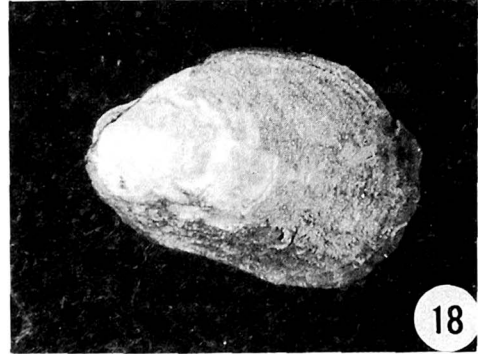
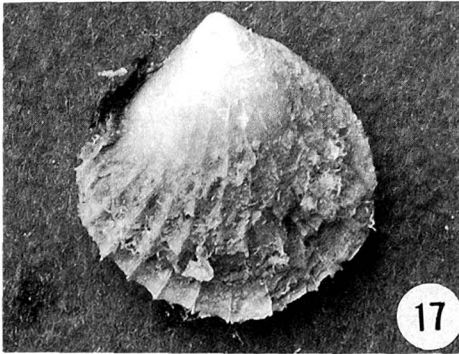
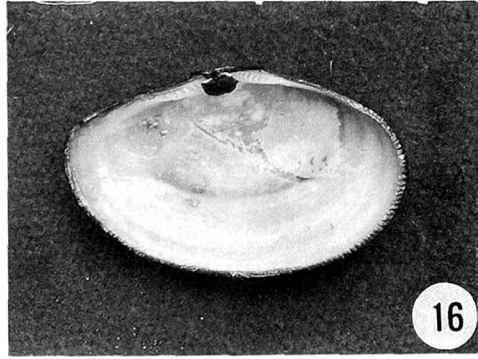
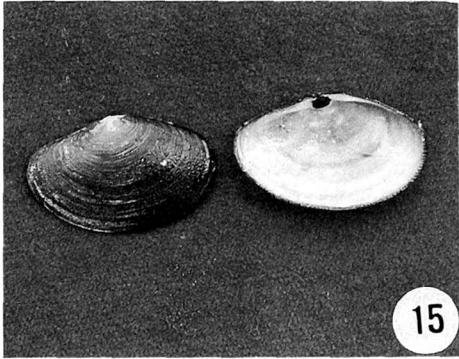
**Fig. 21.** *Lissarca miliaris* (Philippi, 1845)

Height: 3.25mm, Width: 4.2mm, Breadth: 2.8mm

**Fig. 22.** *Limatula (Antarctolima) ovalis* (Thiele, 1912)

Height: 11.35mm, Width: 8.75mm, Breadth: 7.2mm





Class Bivalvia Linnaeus, 1758  
 Subclass Palaeotaxodonta Korobkov, 1954  
 Order Nuculoida Dall, 1889  
 Superfamily Nuclanoidea H. & A. Adams, 1958  
 Family Sareptidae Stoliczka, 1871  
 Subfamily Yoldiinae Habe, 1977  
 Genus *Yoldia* Möller, 1842  
 Subgenus *Aequiyoldia* Soot-Ryen, 1951

**14. *Yoldia (Aequiyoldia) eightsi* (Couthouy in Jay, 1839) [Pl. 3, Figs. 15, 16]**

*Nucula eightsii* Couthouy in Jay, 1839, p.113, pl. 1, figs. 1, 13 (cited from Dell, 1990).

*Leda (Yoldia) woodwardi* Hanley, 1860, Proc. zool. Soc. Lond, p.140, figs. 17, 22 (cited from Dell, 1964).

*Yoldia eightsii*: Sowerby (in Reeve), 1871, sp. 26, pl. 5, fig. 26.

*Yoldia woodwardi*: Sowerby (in Reeve), 1871, sp. 2, pl. 1, fig. 2.

*Yoldia subaequilateralis* Smith, 1875, Ann. Mag. Nat. Hist. (4) 16, p. 73 (cited from Dell, 1990).

*Yoldia kerguelensis* Thiele & Jaekel, 1931, Wiss. Ergebn. Dtsch. Tiefsee-Expedition 21, p. 207 (cited from Dell, 1990).

*Yoldia (Aequiyoldia) eightsi*: Soot-Ryen, 1951, Sci. Res. Nor. Ant. Exped. 1927-1928 et sqq. 32, p.6 (cited from Dell, 1964).

*Yoldia (Aequiyoldia) eightsi*: Dell, 1964, pp. 146-147, pl. 2, fig. 11; Dell, 1990, pp.9-10, figs. 2, 5.

*Yoldia eightsi*: Arnaud, 1985a, p.104 with text fig.

**Material examined:** 11 inds., Stn. 3 (5 Jan. 1992).

**Description:** Shell elliptical, flat, thin, with fine numerous growth lines. Anterior lateral teeth 11, posterior teeth 13, both becoming smaller close to either side. Ligament triangular, sited beneath umbo.

**Type locality:** South Shetland Is.

**Distribution:** South Shetland Is., South Orkney Is., South Sandwich Is., South Georgia, Falkland Is., Tierra del Fuego, southern Chile, Kerguelen Is., Ross sea.

Subclass Pteriomorphia Beurlen, 1994  
 Order Arcoidea Stoliczka, 1871  
 Superfamily Limosoidea Dall, 1895

Family Philobryidae Bernard, 1897  
 Genus *Philobrya* Carpenter, 1872

**15. *Philobrya sublaevis* Pelseneer, 1903 [Pl. 3, Fig. 17]**

*Philobrya sublaevis* Pelseneer, 1903, Res. Voy. S. Y. Belgica Zool, p.25, pl. 7, figs. 93-94 (cited from Dell, 1990); Dell, 1964, pp.163, 165-166, pl. 4, fig. 7, text fig. 2, nos. 3, 15, 16; Arnaud, 1972, p. 433; Dell, 1990, pp.27-29, figs. 41, 50.

*Philobrya limoides* Smith, 1907, Nat. Ant. Exped. 1901-1904, Nat. Hist. 2, p. 4, pl. 3, figs. 3, 5, 7 (cited from Dell, 1990).

*Philippiella bagei* Hedley, 1916, Austral. Ant. Exped. 1911-14, Sci. Rep. C. 4(1), p. 20, pl. 1, figs. 5-7 (cited from Dell, 1990).

*Philippiella orbiculalo* Hedley, 1916, Austral. Ant. Exped. 1911-14, Sci. Rep. C. 4(1), p. 21, pl. 1, figs. 12-13 (cited from Dell, 1990).

*Philobrya antarctica* Thiele & Jaekel, 1931, Wiss. Ergebn. Dtsch. Tiefsee-Expedition 21, p. 190 (cited from Dell, 1990).

**Material examined:** 2 inds., Stn. 1 (9 Jan. 1993); 1 ind., stn. 1 (30 Jan. 1993); 1 ind., Stn. 1 (17 Feb. 1993); 1 ind., Stn. 11 (1 Feb. 1993).

**Description:** Shell fan-shaped; microscopic growth lines; yellowish brown epidermis marked with darker radials which absent on region of umbo and consists of a series of overlapping plates on ventral margin.

**Type locality:** ?

**Distribution:** Anantarctic Penin., South Shetland Is., South Orkney Is., South Sandwich Is., Georgia Is., Bouvet Is.

**16. *Philobrya wandelensis* Lamy, 1906 [Pl. 3, Fig. 18]**

*Philobrya wandelensis* Lamy, 1906, Bull. Mus. Hist. nat., Paris, 12, p. 50 (cited from Dell, 1990); Dell, 1964, p.167; Dell, 1990, p.29, figs. 42, 47-49.

*Hochstetteria wandelensis*: Soot-Ryen, 1951, Sci. Res. Nor. Ant. Exped. 1927-1928 et sqq. 32, p.11 (cited from Dell, 1990).

*Adacnarca wandelensis*: Nicol, 1966, Bull. Amer. Paleont. 51, p. 33, pl. 3, figs. 4-5 (cited from Dell, 1990)

**Material examined:** 1 ind., Stn. 1 (17 Feb. 1993); 1 ind., Stn. 7 (7 Jan. 1993); 1 ind., Stn. 11 (1 Feb. 1993).

**Description:** Shell triangular, ovoid-shaped; yellowish brown epidermis marked with strong growth lines and weak radials, and consists of a series of overlapping plates on ventral margin.

**Type locality:** Wandel I. in Antarctic Penin.

**Distribution:** Antarctic continent from 49°E to Ross Sea, off South Shetland Is., South Orkney Is., South Sandwich Is., South Georgia and Burdwood Bank.

Genus *Adacnarca* Pelsneer, 1903.

**17. *Adacnarca nitens* Pelseneer, 1903 [Pl. 3, Fig. 19]**

*Adacnarca nitens* Pelseneer, 1903, Res. Voy. S.Y. Belgica Zool, pp.24, 41, pl. 7, figs. 83-88 (cited from Dell, 1990); Dell, 1964, p. 172; Dell, 1990, p. 31-32, figs. 38-40, 43.

**Material examined:** 1 ind., Stn. 11 (1 Feb. 1993).

**Description:** Shell small, quadrilateral, ovoid-shaped, pale brown. Exterior surface smooth with very weak radials caused by ribs sited beneath periostracum; interior surface surrounded by fine knobs along all margins. Umbo on middle part of dorsal margin. Ligament presents but no teeth.

**Type locality:** ?

**Distribution:** South Shetland Is., South Orkney Is., South Sandwich Is., South Georgia Is., Ross Sea.

Genus *Lissarca* Smith, 1877

**18. *Lissarca notorcadensis* Melvill & Standen, 1907 [Pl. 3, Fig. 20]**

*Lissarca notorcadensis* Melvill & Standen, 1907 Trans. roy. Soc. Edinb. p. 44, figs. 14-14a (cited from Dell, 1990); Dell, 1964, p. 173; Okutani, 1986, p. 279, pl. 2, figs. 13-14; Dell, 1990, p. 32, figs. 46, 58.

*Arca (Bathyarca) gourdoni* Laym, 1911, Sciences Naturelles: documents scientifiques, p. 28, pl. 1, figs. 21-22 (cited from Dell, 1990).

**Material examined:** 5 inds., Stn. 1 (9 Jan. 1993); 1 ind., Stn. 1 (30 Jan. 1993); 3 inds., Stn. 11 (1 Feb. 1993).

**Description:** Shell small, truncate, yellowish white, thin but not fragile. Anterior margin short, posterior margin longer. Exterior surface smooth

with concentric growth lines; interior surface surrounded by strong knobs along margins, knobs becoming weak on middle of ventral region. Anterior lateral teeth 6, posterior teeth 3. Inner ligament between anterior and posterior teeth sited under umbo located anteriorly on dorsal margin. This species broods its young.

**Type locality:** South Orkney Is.

**Distribution:** South Shetland Is., South Orkney Is., South Sandwich Is., South Georgia Is., Antarctic Penin., Ross Sea.

**19. *Lissarca miliaris* (Philippi, 1845) [Pl. 3, Fig. 21]**

*Pectunculus miliaris* Philippi, 1845, Arch. Naturges. ch. 11, p. 56 (cited from Dell, 1990); Dell, 1964, pp. 72-73; Dell, 1990, pp.32-33, figs. 53-54.

*Lissarca bennetti* Preston, 1916, Ann. Mag. Nat. Hist., 8(18), p.271, figs. 7-7a (cited from Dell, 1990).

**Material examined:** 2 inds. Stn. 1 (30 Jan. 1993); 1 ind., Stn. 11 (1 Feb. 1993).

**Description:** Shell small, deep purple, truncate, with long posterior and extremely short anterior margin. Exterior surface intercrossing strong growth lines and weak radial ribs under microscope, with ridge from umbo to middle of posterior margin; interior surface surrounded by strong knobs resulting in crenation along margins becoming weak on region of ventral and posterior margin. Anterior lateral teeth 3, posterior 3, between which ligament sited.

**Type locality:** Magellan Strait.

**Distribution:** Magellan Strait, South Shetland Is., South Orkney Is., South Georgia Is., Antarctic Penin.

Order Limoida Waller, 1978

Superfamily Limoidea Rafinesque, 1815

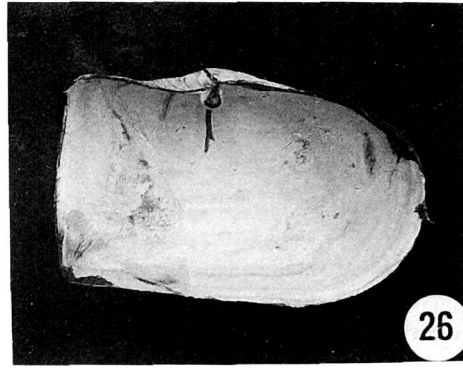
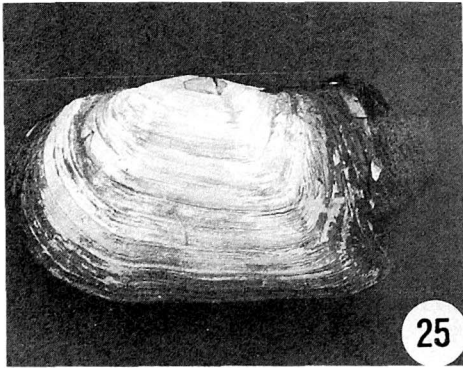
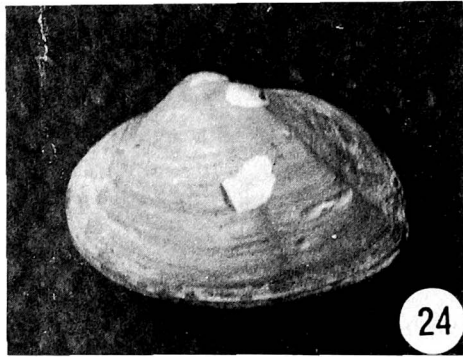
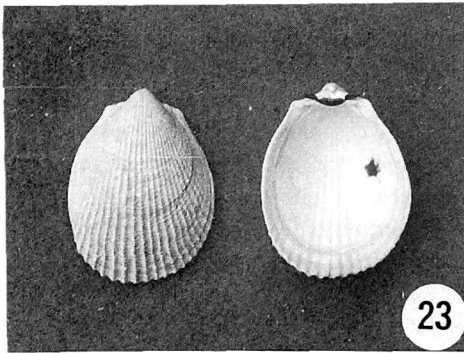
Family Limidae Rafinesque, 1815

Genus *Limatula* Wood, 1839

Subgenus *Antarctolima* Habe, 1977

**20. *Limatula (Antarctolima) ovalis* (Thiele, 1912) [Pl. 3, Fig. 22]**

*Lima (Limatula) ovalis* Thiele, 1912, pp. 112, 226, pl. 17, figs. 5a,-b (cited from Dell, 1990); Dell, 1964, p. 184; Dell, 1990, pp. 54-55, fig. 96.



**PLATE 4**

**Fig. 23.** *Limatula (Antarctolima) pygmaea* (Philippi, 1845)

Height: 12.8mm, Width: 9.9mm, Breadth: 4.5mm

**Fig. 24.** *Cyamiomactra laminifera* (Lamy, 1906)

Height: 5.6mm, Width: 8.3mm, Breadth: 4.0mm

**Fig. 25, 26.** *Laternula elliptica* (King & Broderip, 1831)

Height: 51.6mm, Width: 65.25mm, Breadth: 30.9mm

**Material examined:** 6 inds., Stn. 11 (1 Feb. 1993).

**Description:** Shell small, white, ovoid-shaped, intercrossed with about fine radial ribs on middle part and numerous microscopic growth lines; to form weak scales. Interior surface denticulated on ventral margin due to radial ribs, with resillifer on straight dorsal margin.

**Type locality:** ?

**Distribution:** Region between 38°E and 143°E.

**21. *Limatula (Antarctolima) pygmaea* (Philippi, 1845) [Pl. 4, Fig. 23]**

*Lima pygmaea* Philippi, 1845 Arch. Naturges. ch. 11, p. 56 (cited from Dell, 1990).

*Limatula pygmaea*: Dell, 1964, pp. 182-183, pl.

2, fig. 13.

*Lima falklandica* A. Adams, 1863, p. 509.

*Limea martiali* Mabilie & Rochebrune, 1889, Mission Scient. du Cap Horn, 1882-3, 6, Zool. 2, H. 124 (cited from Dell, 1990).

*Limatula (Antarctolima) pygmaea*: Dell, 1990, p.55.

**Material examined:** 3, 1/2 inds. (left valve), Stn. 1 (17 Feb. 1993).

**Description:** This species differs from *Limatula (Antarctolima) ovalis* (Thiele, 1912) in bearing strong radial ribs which is visible with naked eye; shell flatter, more solid, and rather grayer than former species.

**Type locality:** Magellan Strait.

**Distribution:** Southern Chile, Magellan Strait,

Falkland Is., South Shetland Is., South Orkney Is., South Sandwich Is., South Georgia Is., Antarctic Penin., Prince Edward and Marion Is., Kerguelen Is., Macquire Is.

Subclass Heterodonta Neumayr, 1884  
Order Veneroida H. & A. Adams, 1856  
Superfamily Cyamioidaea  
Family Cyamiidae Philippi, 1845  
Genus *Cyamiomacra* Bernard, 1897

**22. *Cyamiomacra laminifera* (Lamy, 1906) [Pl. 4, Fig. 24]**

*Macra* (*Heteromacra*) *laminifera* Lamy, 1906, Bull. Mus. Hist. nat., Paris, 12, p. 45 (cited from Dell, 1990).

*Diplodonta incerta* Smith, 1907, Nat. Ant. Exped. 1901-4, Nat. Hist. 2, p.4, pl. 3, figs. 5-5a (cited from Dell, 1990).

*Cyamiomacra laminifera*: Dell, 1964, p.202, pl. 6, figs. 9-10; Dell, 1990, pp.50-51, fig. 100.

*Cyamiomacra rousa* Nicol, 1964, Natilus 78, p.60, pl. 6, figs. 1-3 (cited from Dell, 1990).

**Material examined:** 1 ind., Stn. 4 (26 Jan. 1993).

**Description:** Shell small, ovoid-shaped, pale brown due to periostracum. Exterior surface with fine growth lines and no radials; ridge from umbo to ventral margin sited near ventral margin. Umbo on dorsal margin sited at about 3/4 of length anteriorly.

**Type locality:** Wandel I. in Antarctic Penin.

**Distribution:** Bellinghausen Sea, South Shetland Is., South Orkney Is., South Sandwich Is., South Georgia Is., Antarctic Penin., off Falkland Is., Ross Sea.

Subclass Anomalodesmata Dall, 1889  
Order Pholadomyoida Newell, 1965  
Superfamily Pandoroidea Rafinesque, 1815  
Family Laternulidae Hedley, 1918  
Genus *Laternula* Röding, 1778

**23. *Laternula elliptica* (King & Broderip, 1831) [Pl. 4, Figs. 25, 26]**

*Anatina elliptica* King & Broderip, 1831, Zool. J. 5, p.335 (cited from Dell, 1990).

*Laternula elliptica*: Dell, 1964, p. 229; Arnaud, 1972, pp. 434-435; Arnaud, 1985a, p.98 with text

fig.; Okutani, 1986, p.277, 279-280, pl. 2, figs. 20-21; Dell, 1990, p. 62, fig. 106.

**Material examined:** 2 inds., Stn. 7 (7 Jan. 1993); 1 ind., Stn. 7 (16 Feb. 1993); 1 ind., Stn. 8 (17 Feb. 1993).

**Description:** Shell large, elongated, with corase growth line, brownish tip along entire margin. Hinge presents but teeth. Spine under umbo.

**Type locality:** ?

**Distribution:** South Shetland Is., South Orkney Is., South Sandwich Is., South Georgia Is., Antarctic Penin., Kerguelen Is.

## REFERENCES

- Adams, A., 1863. Description of a new genus and twelve new species of Mollusca. Proceedings of the Zoological Society of London 1863: 506-509.
- Arnaud, P.M., 1972. Sur petite collection de gastéropodes prosobranches et pélecypodes de l'île petermann (Antarctique). Tethys 4(2): 429-436.
- 1985a. Bivalves (Class Bivalvia-pelecypods, clams, oysters, etc.) In: Fischer & Hureau (ed.), FAO species identification sheets for fishery purposes-Southern ocean-vol. 1. FAO of United Nations, Rome, pp.95-105.
- 1985b. Gastropods (Class Gastropoda-univalves, snails, etc.) In: Fischer & Hureau (ed.), FAO species identification sheets for fishery purposes-Southern ocean-vol. 1. FAO of United Nations, Rome, pp.107-116.
- Bernard, F. R., Y. Y. Cai, and B. Morton, 1993. Catalogue of the living marine bivalve molluscs of China. Hong Kong University Preaa, Hong Kong, p.146.
- Dell, R. K., 1964. Antarctic and sub-antarctic Mollusca: Amphineura, Scaphopoda and Bivalvia. Discovery Reports 33: 99-250.
- 1990. Antarctic Mollusca with special reference to the fauna of the Ross Sea. The Royal Society of New Zealand, Wellington, p.311.
- Eales, N. D., 1923. Mollusca. Part 5. Anatomy of Gastropoda (except the Nudibranchiata). British Antarctic ("Terra Nova") Expedition, 1910. Natural History Report. Zoology 7: 1-46.
- Haddon, A. C., 1886. Report on the Polyplacopyora. Report on the Scientific Results of the Voyage of H. M. S. Challenger. Zoology 5: 1-50.
- Higo, S. and Y. Got, 1993. a systematic list of molluscan shells from Japanese Is. and the adjacent area. (株) エル具類出版局, 八尾市, p.693, (in Japanese).
- Kaas, P. and Van Belle R. A., 1985. Monograph of liv-

- ing chitons (Mollusca: Polyplacophora). E. J. Brill, Leiden, p.198.
- Laseron, C. F., 1955. The family Cerithiopsidae (Mollusca) from the solanderian and dampierian zoogeographical provinces. *Australia Journal of Marine and Freshwater Research* **7**: 151-182.
- Lincoln, R. J. and Sheals, G. 1979. *Invertebrate Animals. Collection and preservation.* Cambridge University Press, Cambridge, p.150.
- Massy, A. L., 1920. Mollusca. Part 3. Eupteropoda (Pteropoda Thecosomata) and Pterota (Pteropoda Gymnosomata). *British Antarctic ("Terra Nova") Expedition, 1910. Natural History Report. Zoology* **2**: 141-176.
- Okutani, T., 1986. A note on antarctic benthic mollusks collected with a beam-trawl from Breid Bay by the 25th Japanese Antarctic Research Expedition. *Mem. Natl Inst. Polar Res., Spec. Issue*, **40**: 227-287.
- Oliver, P. G. and G. B. Picken, 1984. Prosobranch gastropods from Signy island, Antarctica: Buccinacea and Muricacea. *British Antarctic Survey Bulletin* **62**: 95-115.
- Pilsbry, H. A., 1893. *Monograph of the Polyplacophora.* In: G.W. Tryon, *Manual of Conchology* 14: i-xxxiv, 129-359, pls. 31-68.
- Smith, E. A., 1885. Report on the Lamellibranchiata collected by H. M. S. Challenger during the years 1873-76. *Report on the Scientific Results of the Voyage of H. M. S. Challenger, Zoology* **13**: 1-341.
- Sowerby, G. B., 1871 (in Reeve, L. A.). *Monograph of the Genus Yoldia. Conchologia Iconica* **18**: 28 spp., 5 pls., 28 figs.
- Watson, R. B., 1886. Report on the Scaphopoda and Gastropoda collected by H.M.S. Challenger during the years 1873-1876. *Challenger Report, Zoology* **5**: 1-50.