

- ZIBROWIUS, H. & GRYGIER, M.J., 1985. — Diversity and range of scleractinian coral hosts of Ascothoracida (Crustacea: Maxillopoda). *Annales de l'Institut Océanographique*, Paris, **61**(2): 115-138. 51 figs.

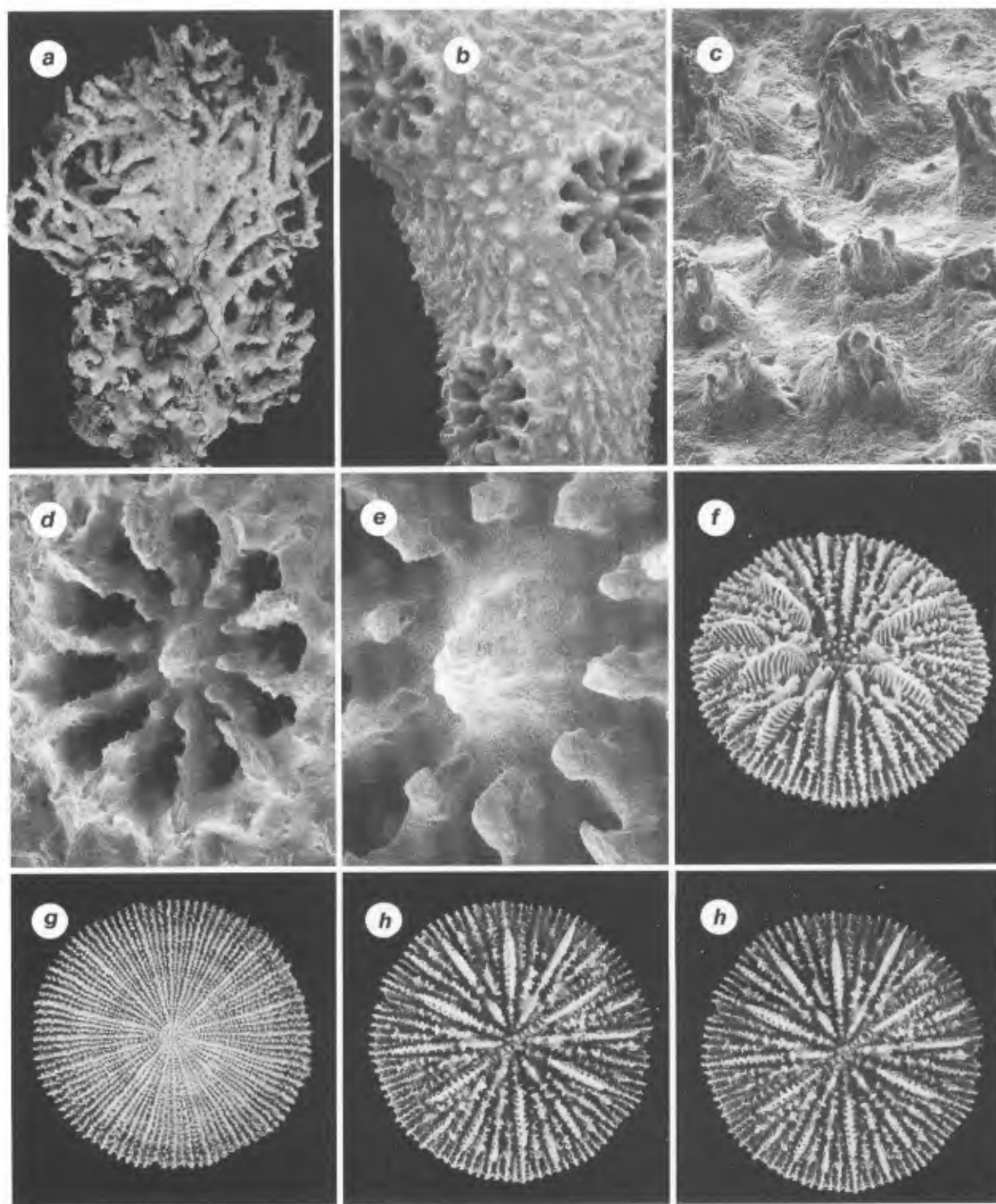


FIG. 1 a-e. — *Madracis kauaiensis*: a, MUSORSTOM 7 stn 509 (MNHN): a large colony, x 0.46. — b-e, MUSORSTOM 7 stn 509 (USNM 98541): b, branch with 3 corallites, x 15; c, coenosteal spines, x 115; d, calice, x 38; e, close up of columella and paliform lobes, x 100.

FIG. 1 f-h. — *Fungiacyathus sandoi*, holotype, MUSORSTOM 7 stn 538 (MNHN), oblique, basal, and stereo calicular views, all x 3.0.

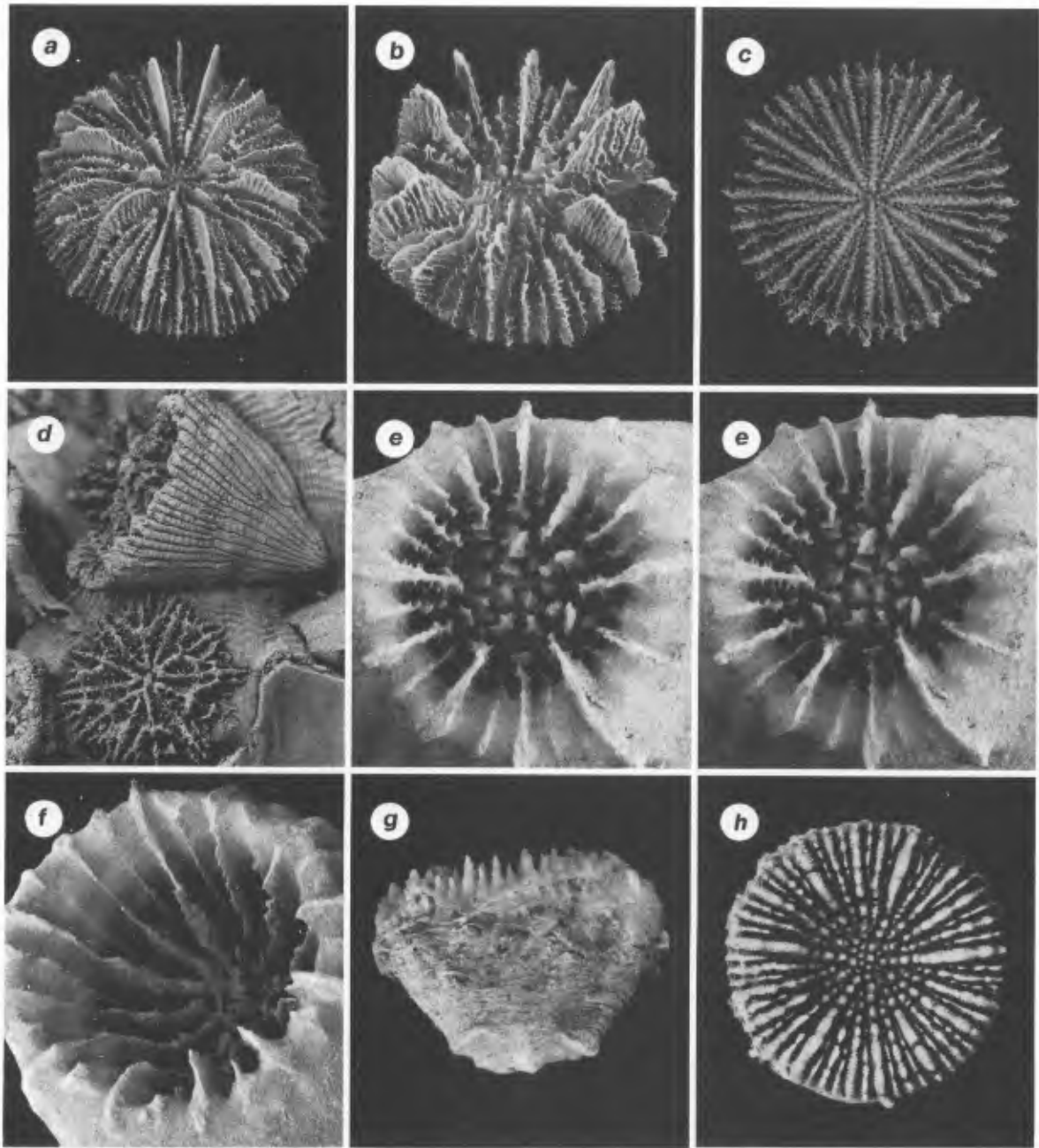


FIG. 2 a. — *Fungiacyathus paliferus*, MUSORSTOM 8 stn 1003 (MNHN), oblique calicular view, x 3.3.

FIG. 2 b-c. — *Fungiacyathus margaretae*: **b**, MUSORSTOM 7 stn 567 (MNHN), oblique calicular view, x 3.3. — **c**, MUSORSTOM 7 stn 565 (MNHN), granular base, x 3.1.

FIG. 2 d. — *Fungiacyathus variegatus*, MUSORSTOM 9 stn 963 (MNHN), corallum cemented to a *Xenophora* shell, along with a corallum of *Tropidocyathus labidus*, x 6.6

FIG. 2 e. — *Madrepora oculata* forma *formosa*, MUSORSTOM 7 stn 609 (USNM 98580), stereo view of a calice with asymmetrically arranged paliform lobes, x 23.

FIG. 2 f. — *Madrepora oculata* forma *tenuis*, MUSORSTOM 7 stn 552 (USNM 98548), calice lacking paliform lobes and columella, x 16.5.

FIG. 2 g-h. — *Anthemiphyllia pacifica*, MUSORSTOM 8 stn 1031 (MNHN), side and calicular views of a pedicellate corallum, x 3.9, x 4.3, respectively.

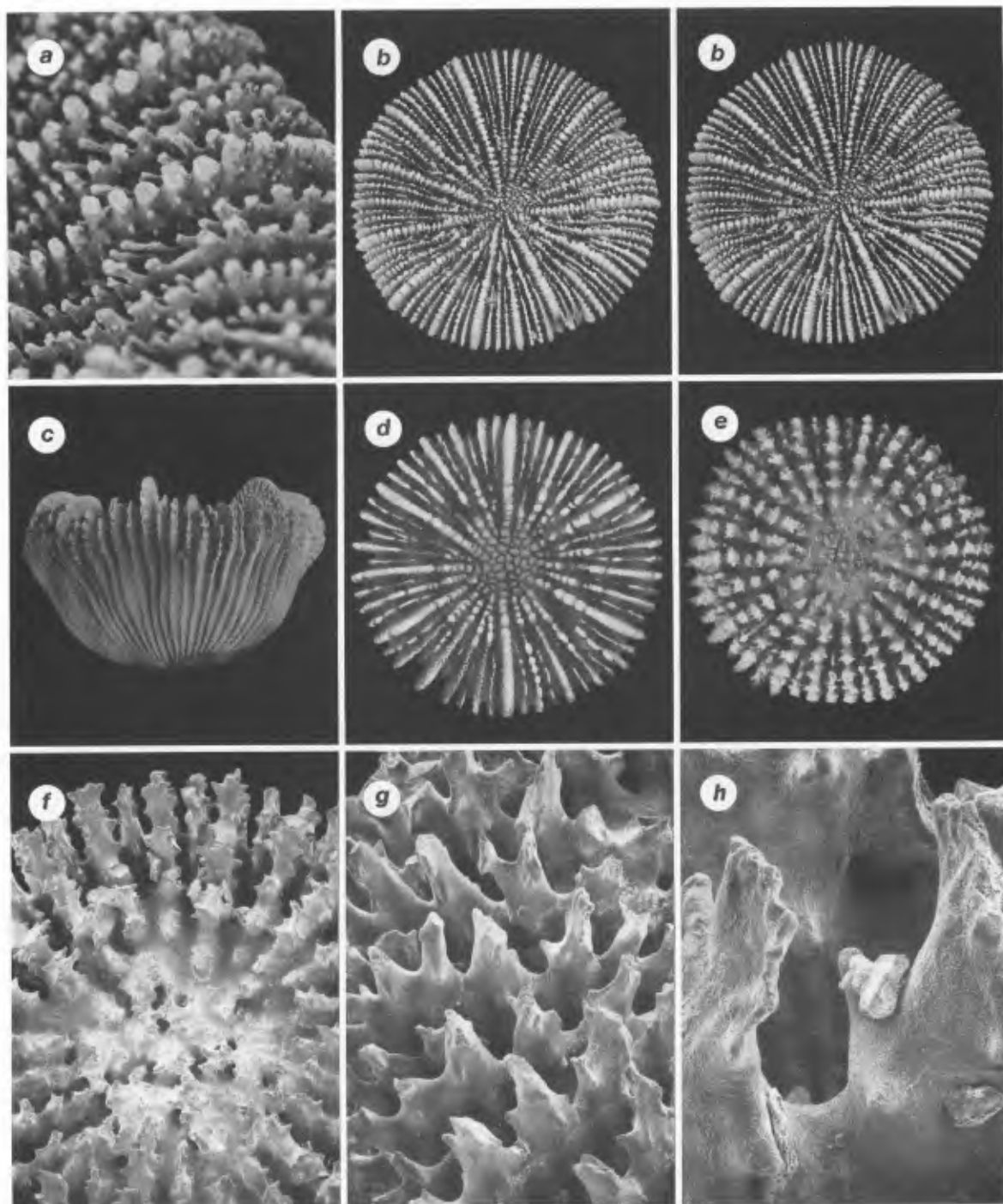


FIG. 3 a-b. — *Anthemiphyllia multidentata*, holotype. Cronulla (USNM 83010), detail of septal edge dentition and stereo calicular view, x 6.3, x 2.0, respectively.

FIG. 3 c-d. — *Anthemiphyllia macrolobata*, holotype, *Townsend Cromwell* stn 81-01-14 (USNM 60559), side and calicular views, both x 3.1.

FIG. 3 e-h. — *Anthemiphyllia patera costata*: e, MUSORSTOM 7 stn 586 (MNHN), calicular view of holotype, x 5.6. — f-h, paratype, MUSORSTOM 7 stn 594 (USNM 98555), calice and details of septal spines, x 11, x 24, x 75, respectively.

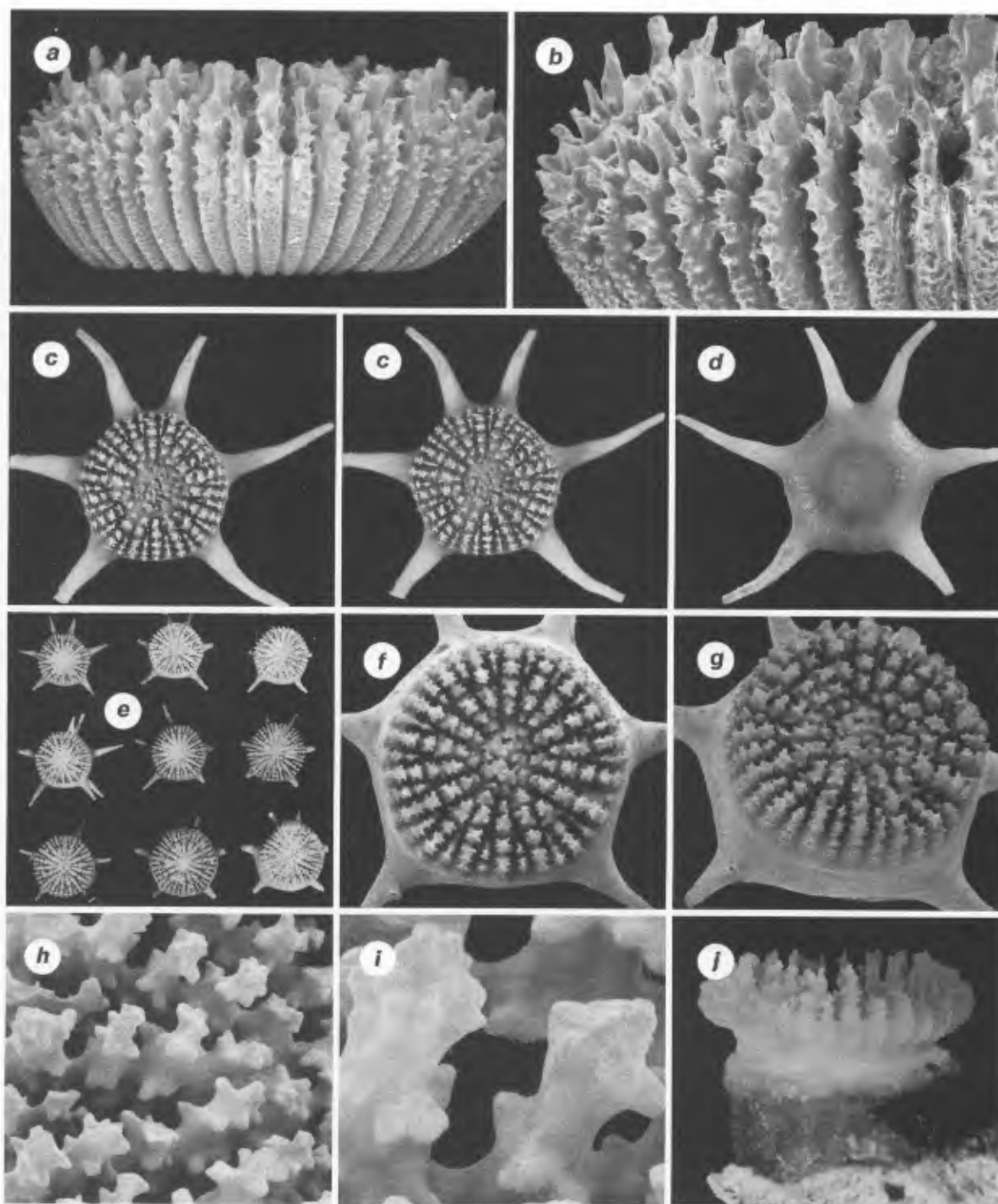


FIG. 4 a-b. — *Anthemiphyllia patera costata*, paratype, MUSORSTOM 7 stn 594 (USNM 98555), edge views of costal granulation, x 8.5, x 17.5, respectively.

FIG. 4 c-j. — *Anthemiphyllia spinifera*: c-e, MUSORSTOM 7 stn 605 (MNHN): c-d, stereo calicular and basal views of holotype, both x 5.0; e, 9 paratypes, x 2.0. — f-i, paratypes, MUSORSTOM 7 stn 610 (USNM 98570): f-g, calicular views, x 5.8, x 6.6, respectively; h-i, paratypes, septal spines, x 27, x 75, respectively. — j, paratype, MUSORSTOM 8 stn 1014 (MNHN), anthocyathus attached to its anthocaulus, x 9.5.

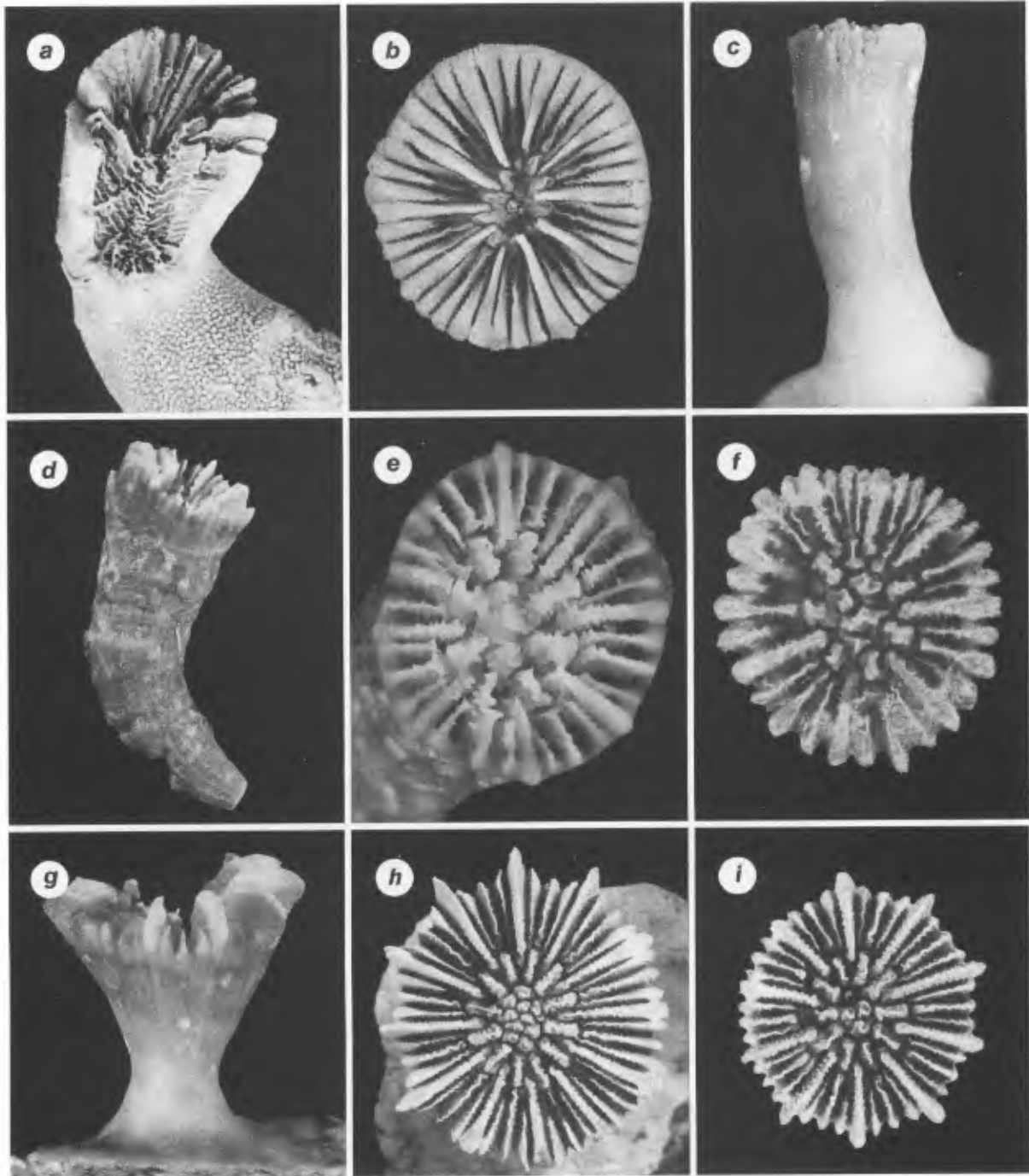


FIG. 5 a-b. — *Caryophyllia crosnieri*: **a**, MUSORSTOM 8 stn 974 (MNHN), broken corallum revealing ridged pali and deep fossa, x 6.7. — **b**, MUSORSTOM 8 stn 973 (MNHN), calice, x 5.0.
 FIG. 5 c, f. — *Caryophyllia marmorea*, MUSORSTOM 7 stn 525 (MNHN), side and calicular views, x 6.7, x 15.2, respectively.
 FIG. 5 d-e. — *Caryophyllia abrupta*, holotype, MUSORSTOM 7 stn 535 (MNHN), side and calicular views, x 2.6, x 6.6, respectively.
 FIG. 5 g-i. — *Caryophyllia* sp. cf. *C. calveri*, MUSORSTOM 8 stn 1056 (MNHN): **g-h**, side and calicular views of corallum with 12 pali, x 4.1, x 5.0, respectively; **i**, calicular view of corallum with 10 pali, x 6.8.

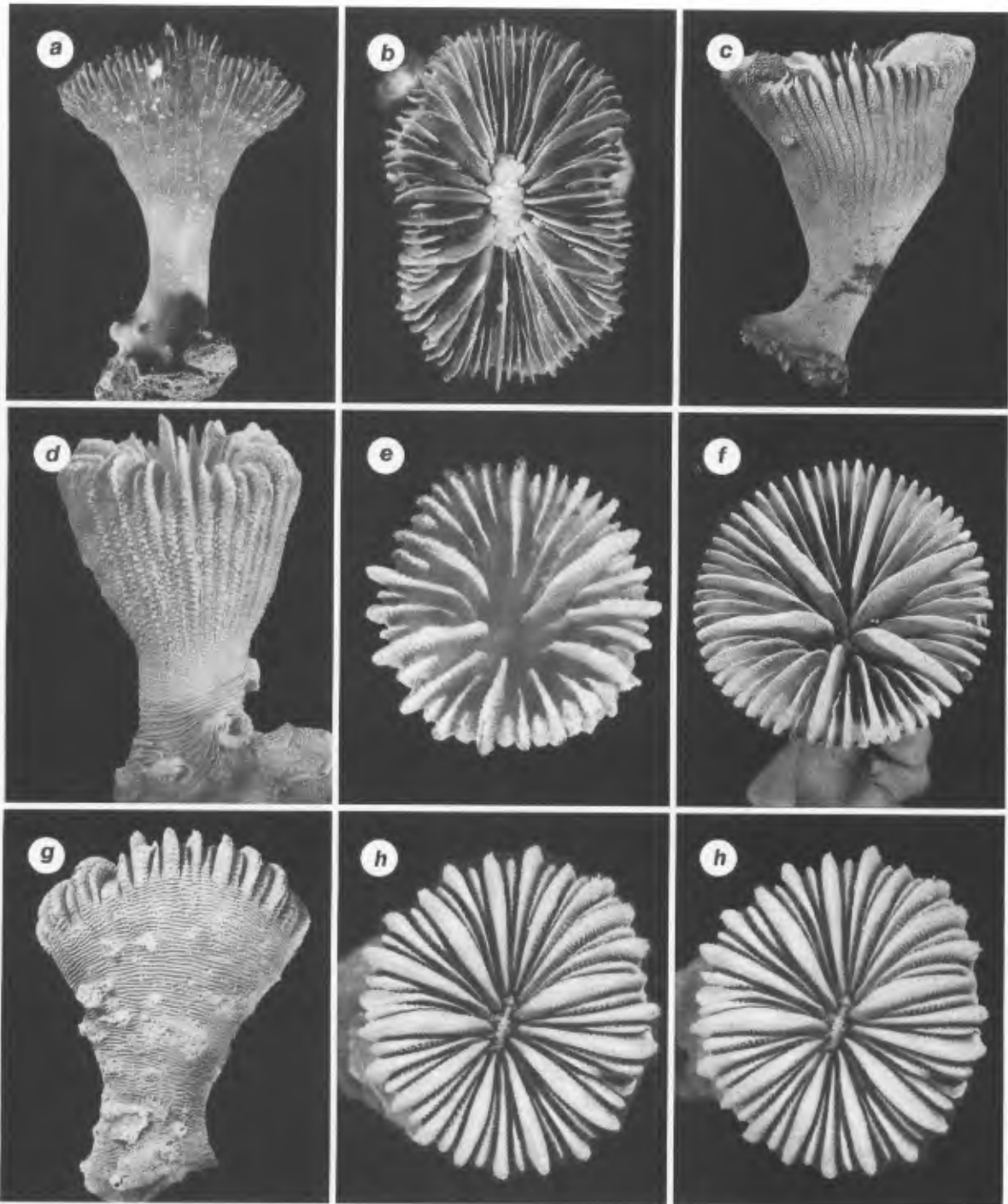


FIG. 6 a-b. — *Crispatotrochus rugosus*, MUSORSTOM 8 stn 1043 (MNHN), side and calicular views, x 1.4, x 2.0, respectively.

FIG. 6 c, f. — *Oxysmilia circularis*, MUSORSTOM 8 stn 977 (NMNH), side and calicular views, x 1.7, x 1.9, respectively.

FIG. 6 d-e. — *Oxysmilia epithecata*, holotype, MUSORSTOM 8 stn 1018 (MNHN), side and calicular views, x 5.3, x 6.3, respectively.

FIG. 6 g-h. — *Oxysmilia corrugata*, holotype, MUSORSTOM 8 stn 1030 (MNHN), side and stereo calicular views, x 4.1, x 4.9, respectively.

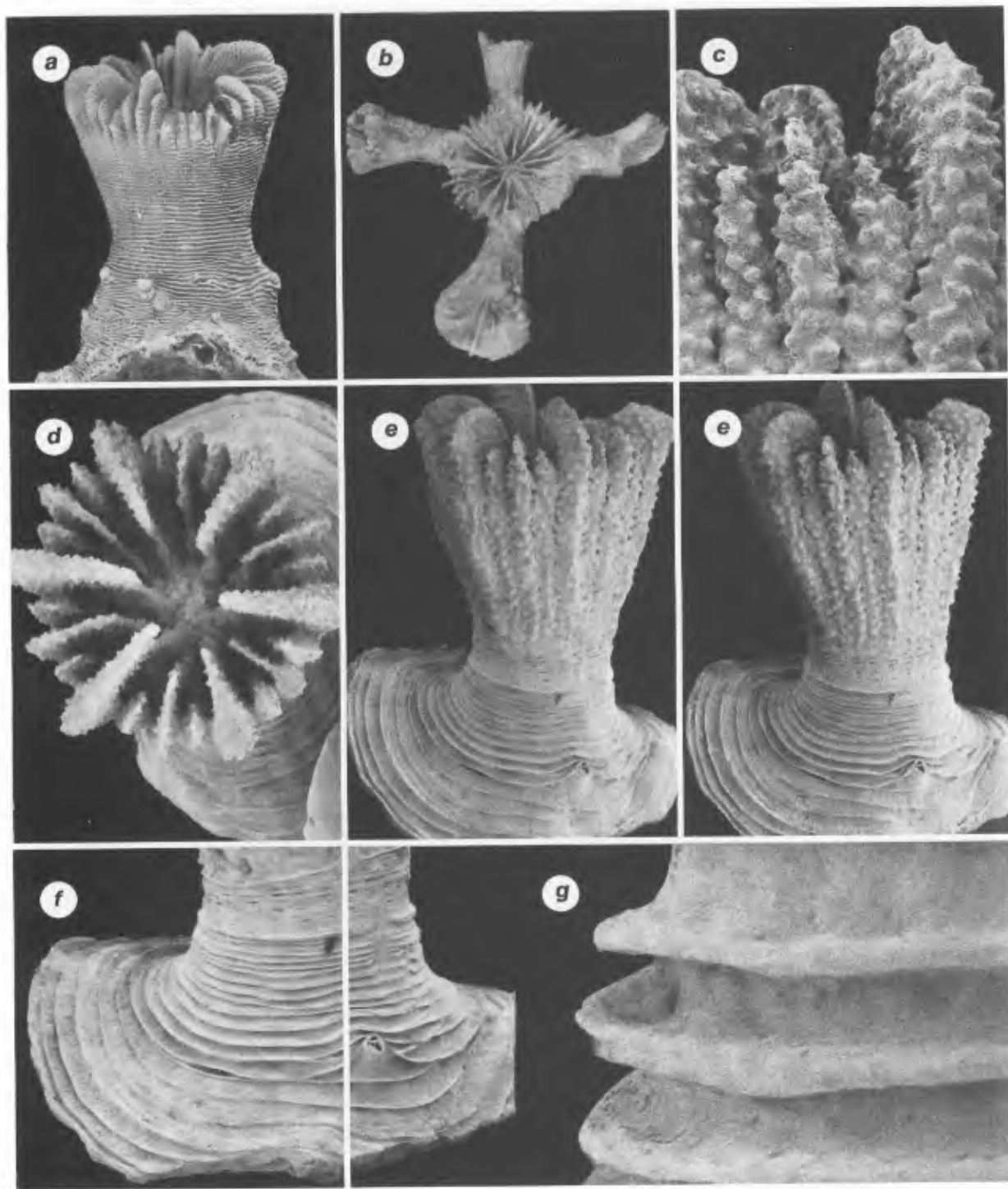


FIG. 7 a. — *Oxysmilia corrugata*, paratype, MUSORSTOM 8 stn 1030 (MNHN), side view showing thecal ridges, x 4.1.
 FIG. 7 b-g. — *Oxysmilia epithecata*: b, paratype, MUSORSTOM 8 stn 1023 (NMNH), cluster of 5 corallites. —
 c-g, paratypes, MUSORSTOM 7 stn 496 (USNM 98626): c, costal granules near calice, x 41; d-e, calicular and stereo
 side views of same specimen, x 20, x 14.5, respectively; f-g, epithecal ridges on base of corallum, x 22, x 450,
 respectively.

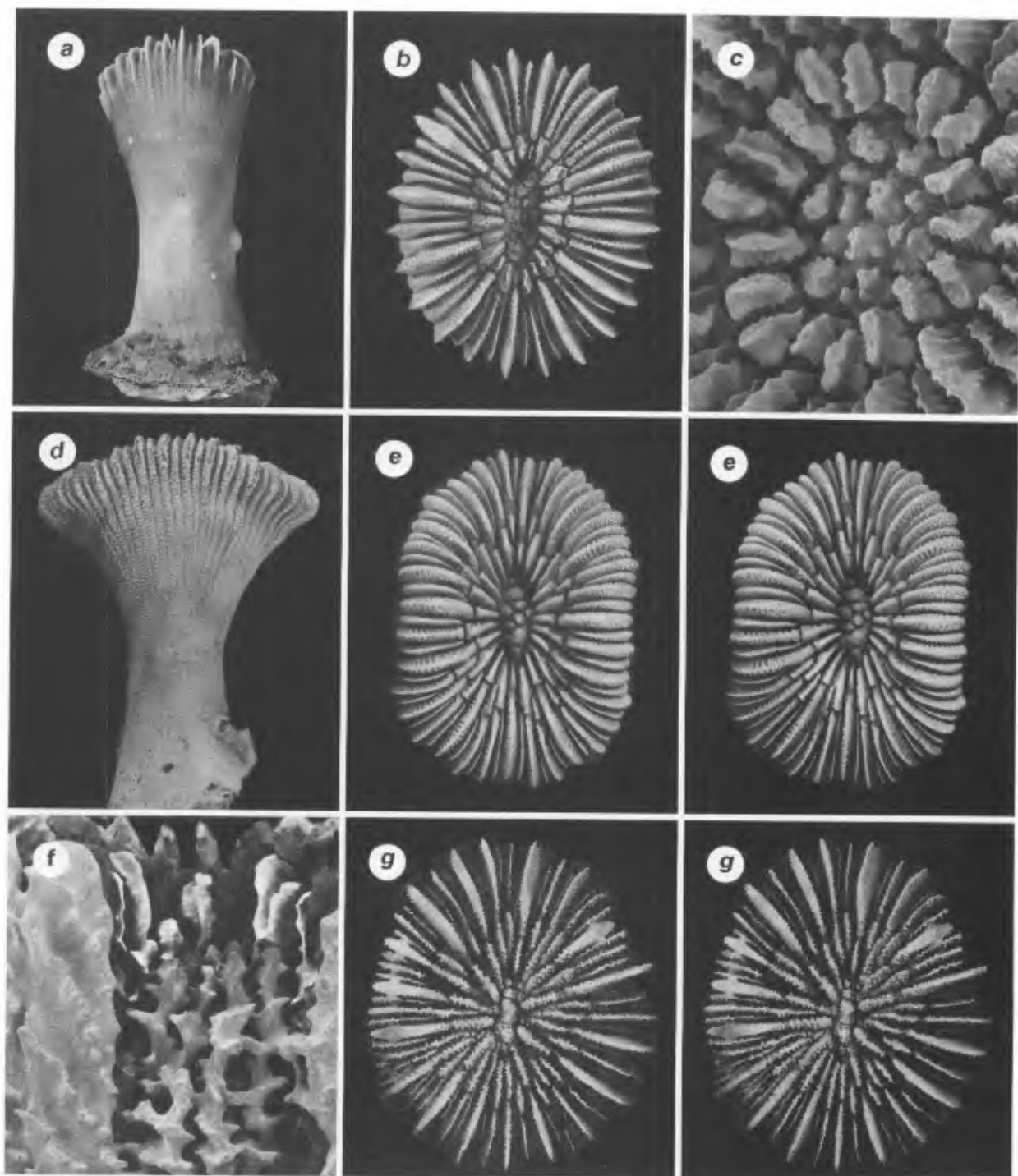


FIG. 8 a-b, f. — *Trochocyathus vasiformis*, MUSORSTOM 8 stn 977 (MNHN): **a-b**: side and calicular views, x 1.9, x 4.1, respectively; **c**, fracture revealing menianes on pali and twisted columellar elements, x 15.

FIG. 8 c. — *Bourneotrochus stellulatus*, MUSORSTOM 7 stn 509 (USNM 98708), paler ring and columella, x 25.

FIG. 8 d-e. — *Trochocyathus efateensis*, holotype, MUSORSTOM 8 stn 1019 (MNHN), side and stereo calicular views, x 2.8, x 3.4, respectively.

FIG. 8 g. — *Trochocyathus patelliformis*, holotype, HURL stn P5-063 (USNM 83026), stereo calicular view, x 2.4.

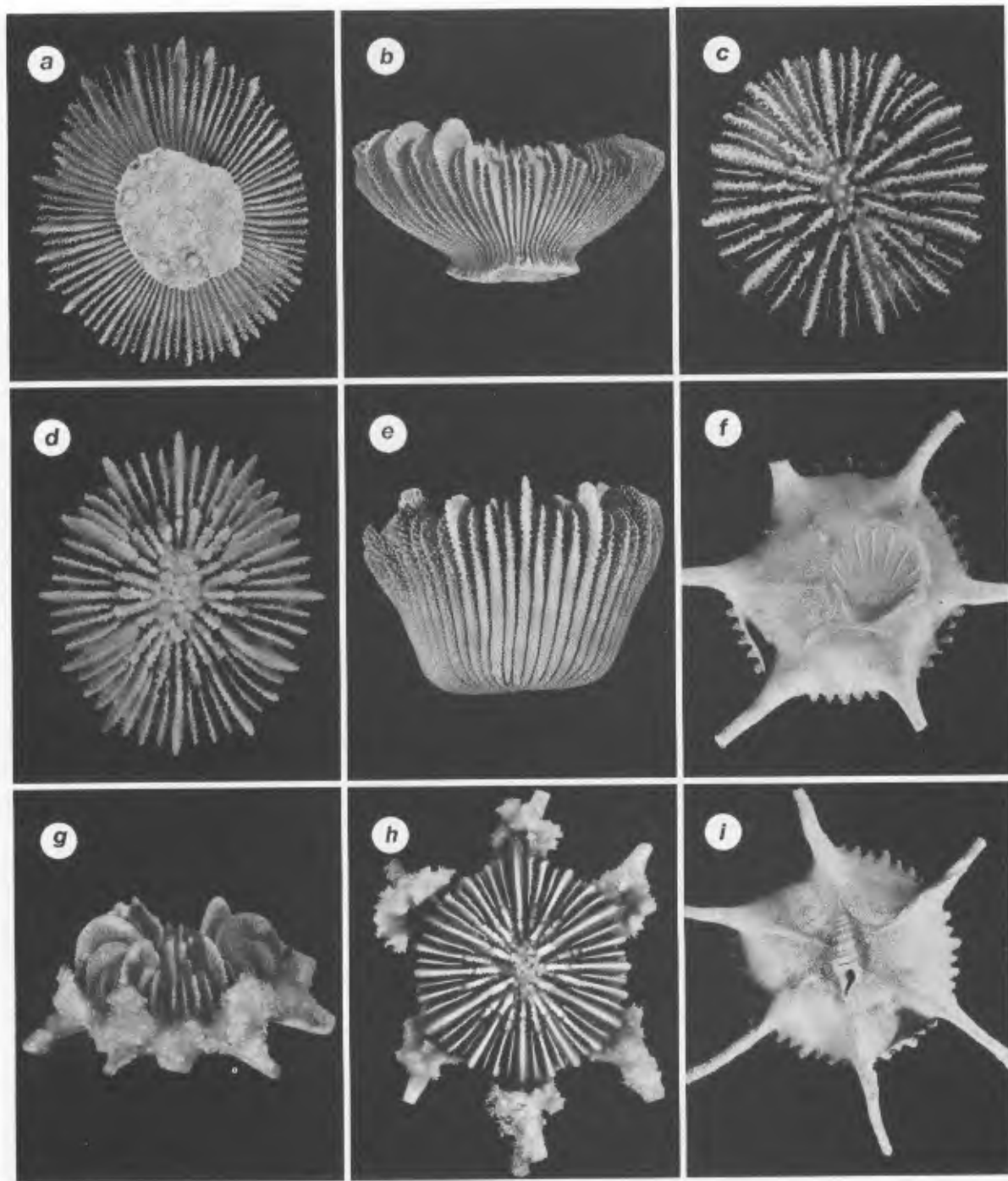


FIG. 9 a-c. — *Trochocyathus patelliformis*: a-b, holotype, HURL stn P5-063 (USNM 83026), basal and side views, x 2.4, x 2.2, respectively. — c, paratype, MUSORSTOM 8 stn 1111 (MNHN), juvenile calice, x 4.4.
 FIG. 9 d-e. — *Trochocyathus discus*, MUSORSTOM 8 stn 1089 (MNHN), calicular and side views, x 3.8, x 3.4, respectively.
 FIG. 9 f-i. — *Trochocyathus brevispina*: f, i, MUSORSTOM 8 stn 963 (MNHN), bases of coralla that were originally attached to a bivalve and a gastropod, x 2.7, x 3.0, respectively. — g, MUSORSTOM 8 stn 1004 (MNHN), side view of nodular proliferations on costal spines, x 2.9. — h, MUSORSTOM 8 stn 1003 (MNHN), calicular view of nodular proliferations on costal spines, x 2.8.

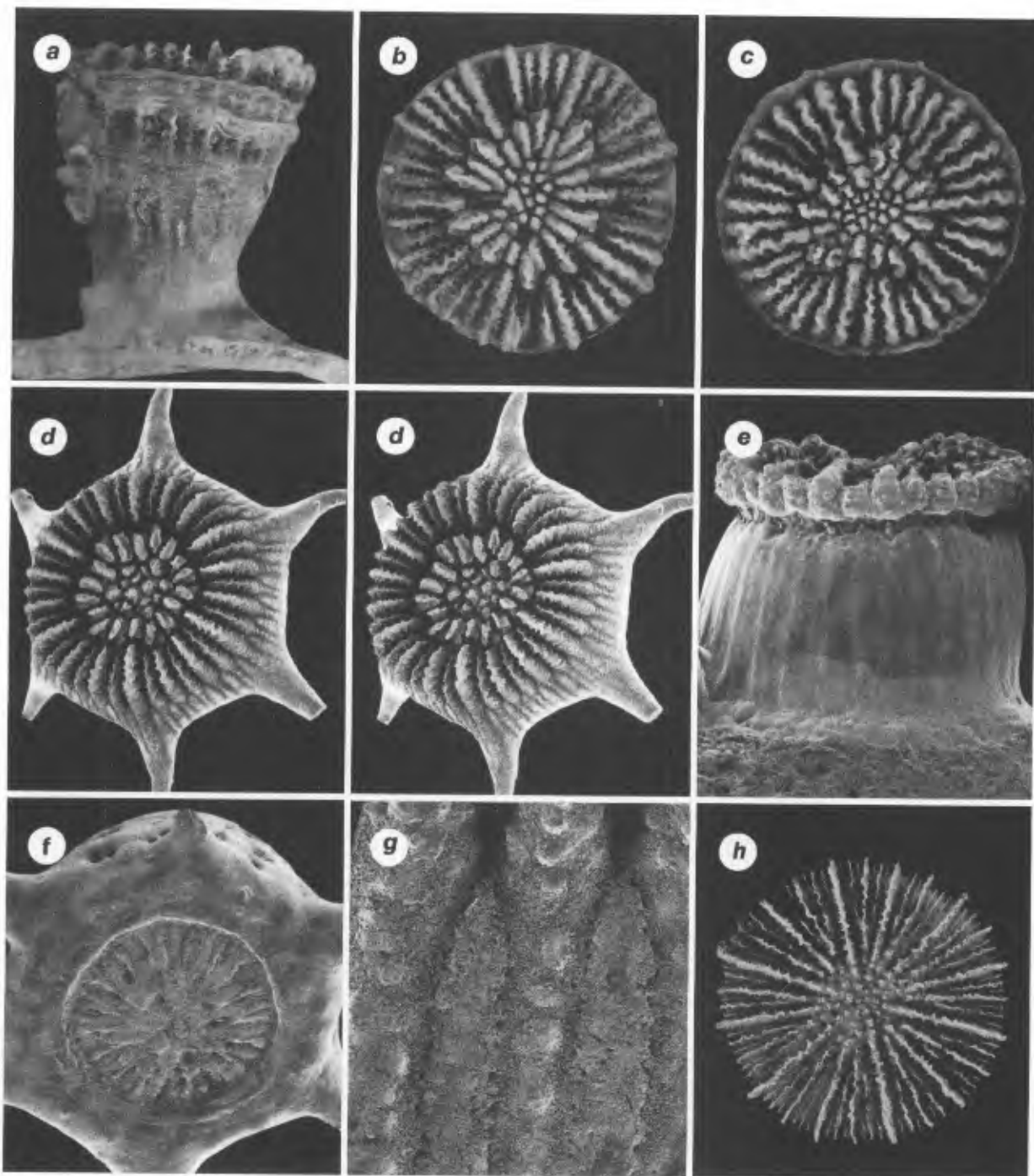


FIG. 10 a-c. — *Polycyathus octuplus*: a-b, holotype, MUSORSTOM 7 stn 494 (MNHN), side and calicular views, x 6.0, x 7.5, respectively. — c, paratype, MUSORSTOM 7 stn 504 (MNHN), calice of septamerally symmetrical corallum, x 7.5.

FIG. 10 d-g. — *Bourneotrochus stellulatus*: d-e, MUSORSTOM 7 stn 509 (USNM 98708): d, stereo oblique calicular view, x 6.5; e, anthocaulus with incipient anthocyathus attached, x 16. — f-g, MUSORSTOM 7 stn 511 (USNM 98704): f, basal scar resulting from transverse division, x 11; g, costae at calicular edge, x 54.

FIG. 10 h. — *Stephanocyathus regius*, MUSORSTOM 7 stn 509 (MNHN), juvenile corallum with 96 septa, x 2.9.

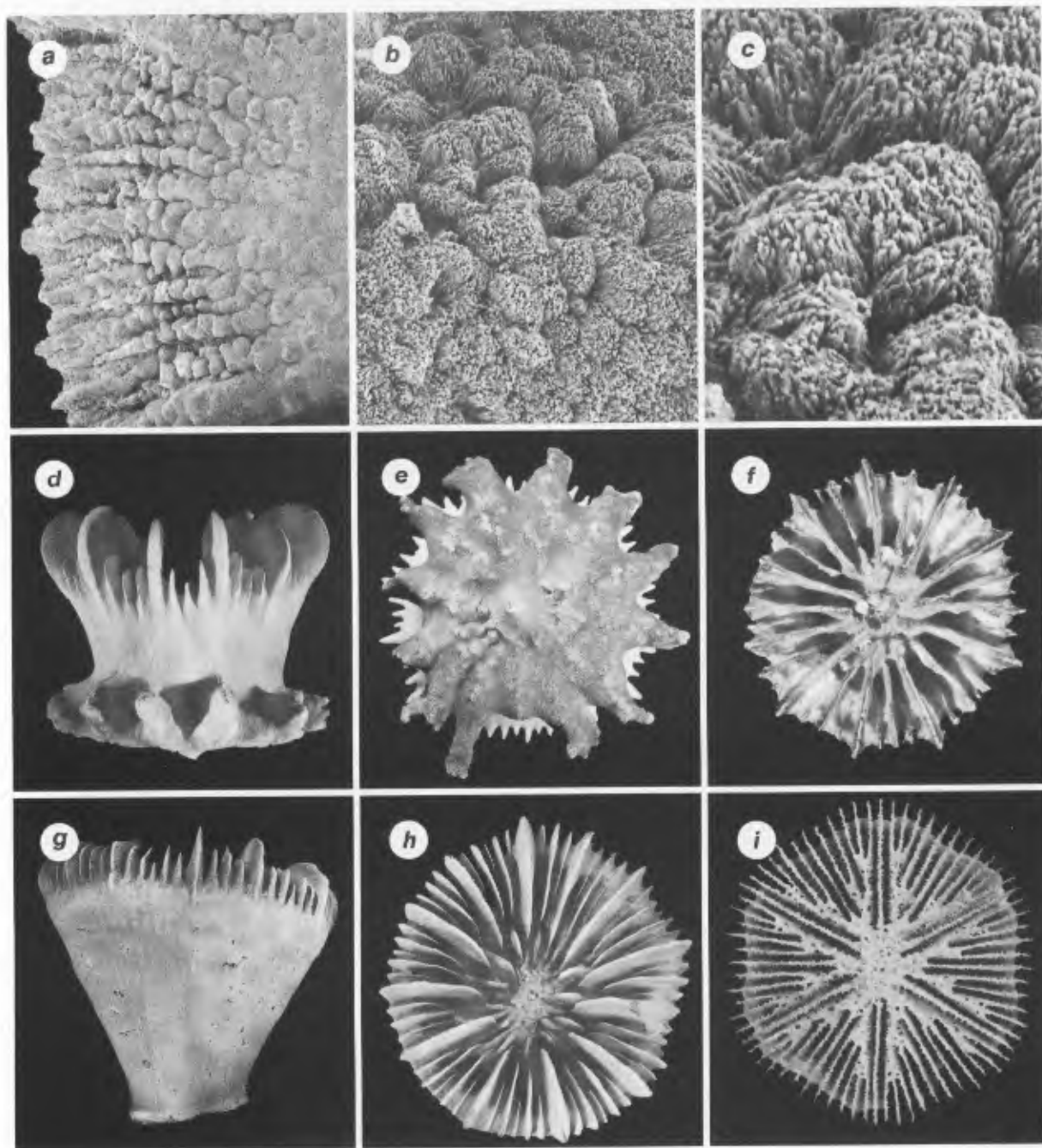


FIG. 11 a-c. — *Stephanocyathus regius*, MUSORSTOM 8 stn 1129 (USNM 98657), base of rapidly growing corallum showing progressive magnifications of tufts of fibres, x 20, x 580, x 1450, respectively.

FIG. 11 d-f. — *Stephanocyathus coronatus*: **d-e**, MUSORSTOM 8 stn 1125 (MNHN), side and basal views, both x 1.2. — **f**, MUSORSTOM 7 stn 622 (MNHN), juvenile "flatiliseptis" stage, x 3.8.

FIG. 11 g-h. — *Vaughanella concinna*, MUSORSTOM 7 stn 572 (MNHN), side and calicular views, x 1.6, x 1.7, respectively.

FIG. 11 i. — *Deltocyathus magnificus*, MUSORSTOM 8 stn 963 (MNHN), corallum with hexagonal outline, x 2.2.

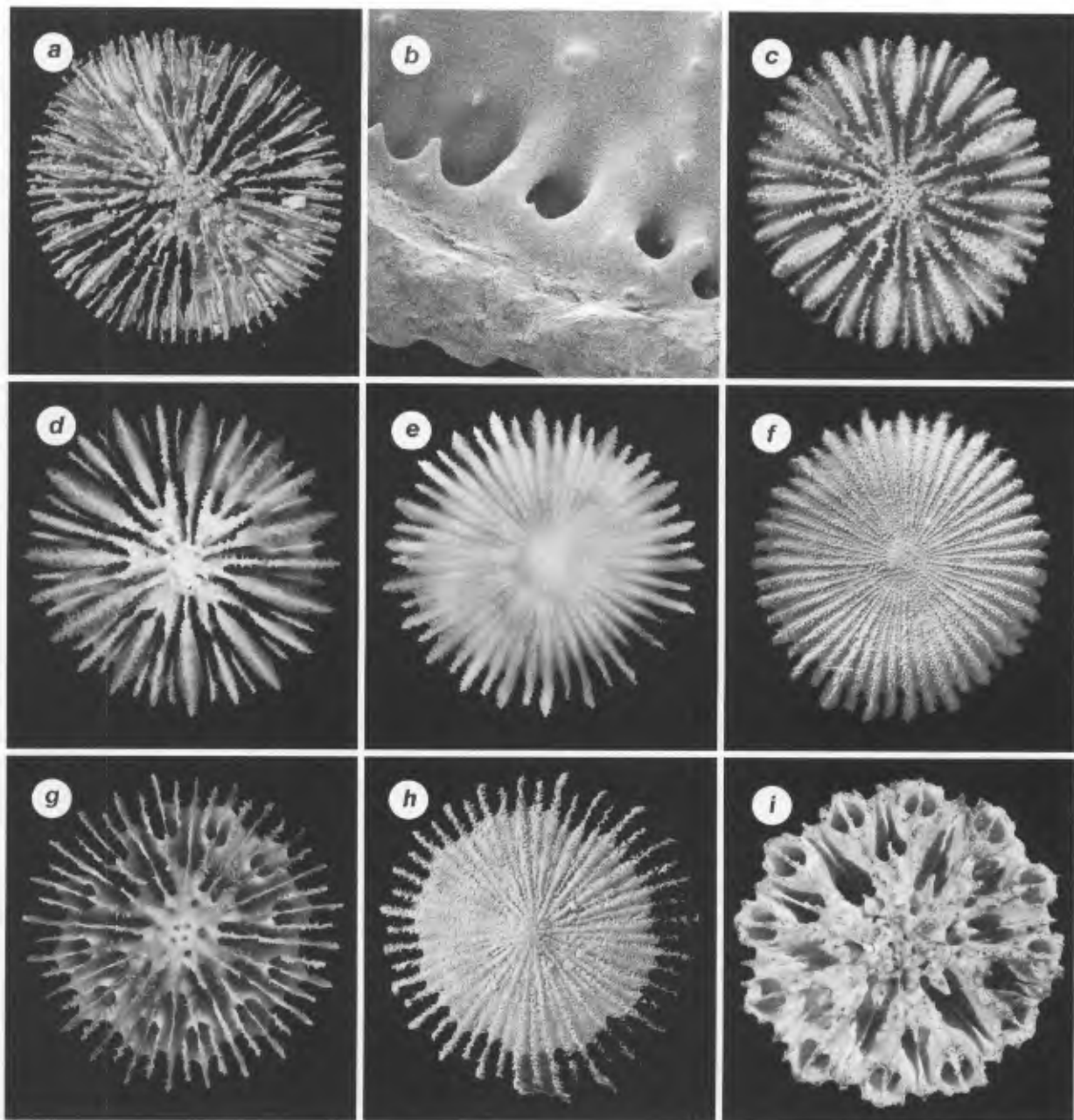


FIG. 12 a-b. — *Deltocyathus taiwanicus*: **a**, MUSORSTOM 7 stn 541 (MNHN), calicular view, x 3.2. — **b**, MUSORSTOM 7 stn 589 (USNM 98678), processes uniting S₄ to adjacent S₃, x 40.
 FIG. 12 c-f. — *Deltocyathus crassiseptum*: **c**, **f**, paratype, MUSORSTOM 8 stn 978, calicular and basal views, both x 3.5. — **d**-**e**, holotype, MUSORSTOM 8 stn 980 (MNHN), calicular and basal views, both x 3.3.
 FIG. 12 g-i. — *Deltocyathus cameratus*, MUSORSTOM 8 stn 1007 (MNHN): **g**-**h**, holotype, calicular and basal views, both x 3.5; **i**, paratype, worm corallum showing calicular chambers, x 4.6.

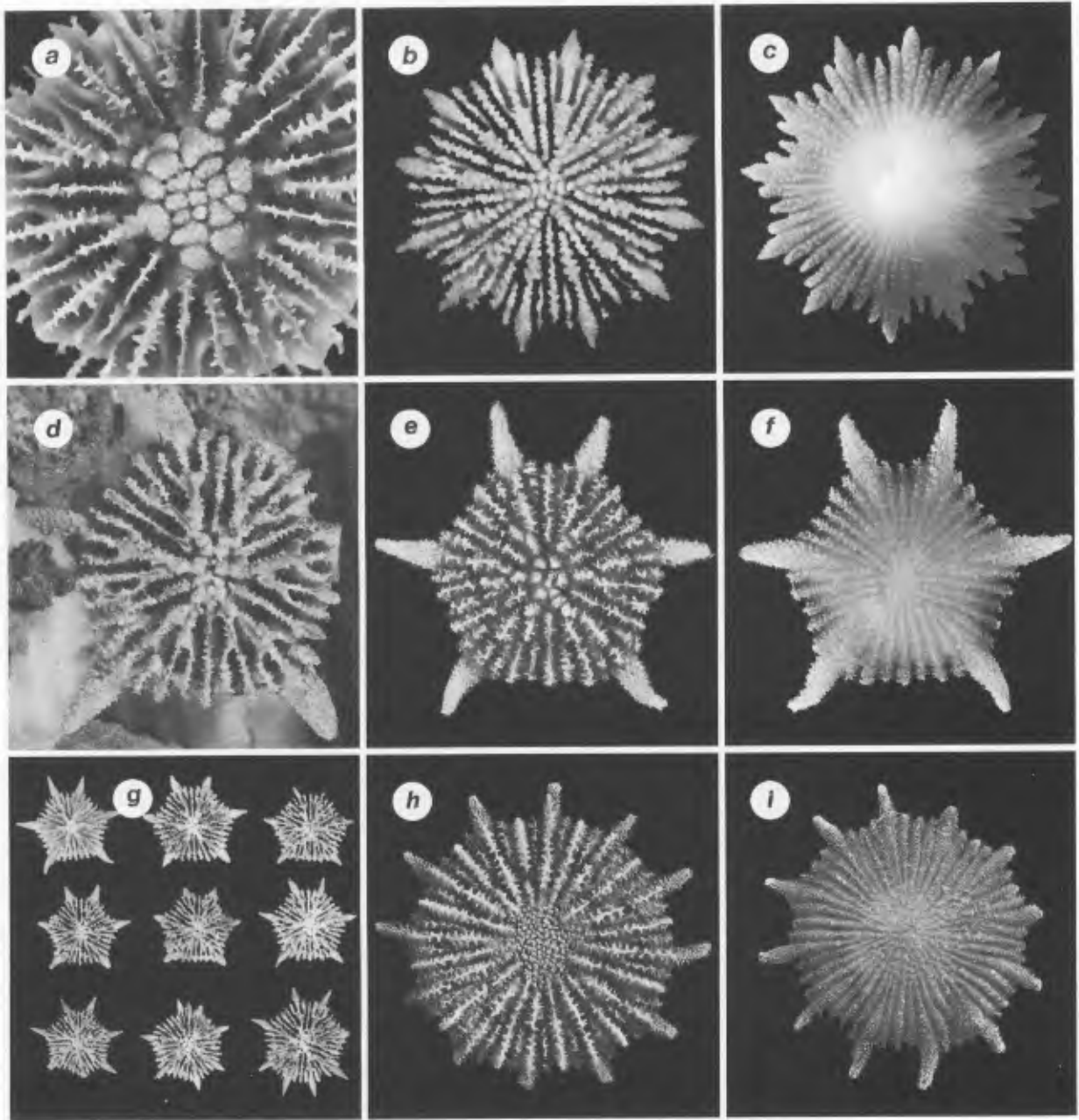


FIG. 13 a. — *Deltocyathus cameratus*, paratype, MUSORSTOM 8 stn 1036 (MNHN), specimen with ornately sculptured columella, x 5.5.

FIG. 13 b-c. — *Deltocyathus stella*, MUSORSTOM 7 stn 513 (MNHN), calicular and basal views, both x 4.7.

FIG. 13 d-g. — *Deltocyathus heteroclitus*: d, MUSORSTOM 8 stn 1106 (MNHN), corallum cemented to a *Xenophora* shell, x 7.1. — e-g, MUSORSTOM 7 stn 514 (MNHN): e-f, calicular and basal views, both x 7.0; g, series of 9 specimens, those in lower row having 7 or 8 costal spines, x 2.3.

FIG. 13 h-i. — *Deltocyathus ornatus*, holotype, Lifu (Cambridge), calicular and basal views, both x 4.0.

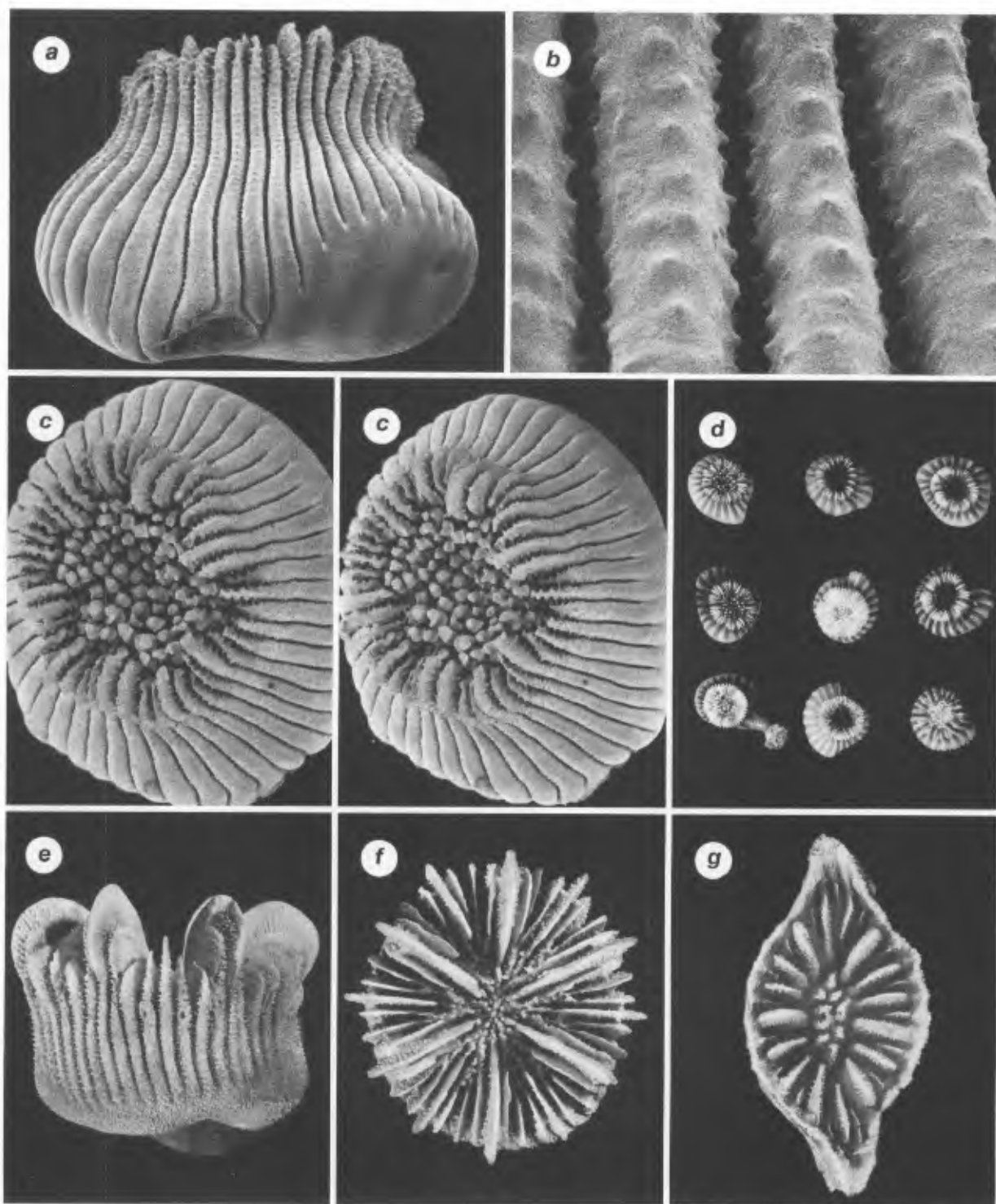


FIG. 14 a-d. — *Heterocyathus* sp. cf. *H. sulcatus*, MUSORSTOM 7 stn 513 (USNM 98712): a, side view showing sipunculid efferent pore, x 14; b, granules of costae, x 105; c, stereo calicular view, x 11; d, series of 9 coralla (MNHN), x 2.0.
 FIG. 14 e-f. — *Heterocyathus alternatus*, MUSORSTOM 8 stn 1004 (MNHN), side and calicular views, both x 4.8.
 FIG. 14 g. — *Conotrochus asymmetros*, holotype, MUSORSTOM 7 stn 496 (MNHN), calicular view, x 6.5.

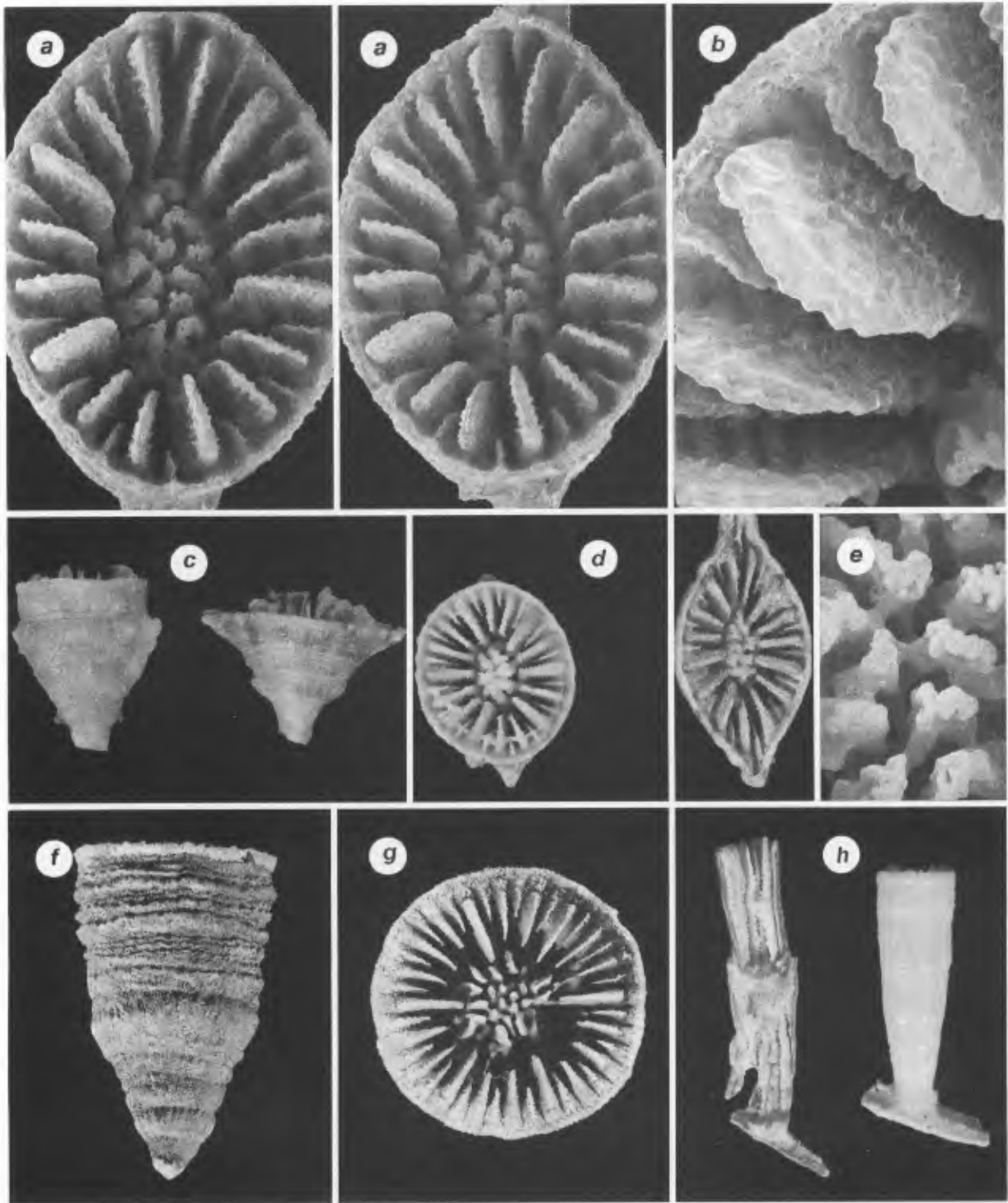


FIG. 15 a-e. — *Conotrochus asymmetros*, paratypes: a-b, e, MUSORSTOM 7 stn 495 (USNM 98735): a, stereo calicular view, x 14; b, inner calicular edge, x 37; e, columellar elements, x 35. — c-d, MUSORSTOM 7 stn 513 (MNHN), side and calicular views of coralla with and elliptical and an elongate calice, x 4.3, x 6.3, respectively.
 FIG. 15 f-g. — *Lochmaetrochus gardineri*, holotype, MUSORSTOM 8 stn 1036 (MNHN), side and calicular views, x 3.0, x 4.1, respectively.
 FIG. 15 h. — *Aulocyathus juvenescens*, MUSORSTOM 8 stn 976 (MNHN), a longitudinally fractured and an intact specimen, x 3.3.

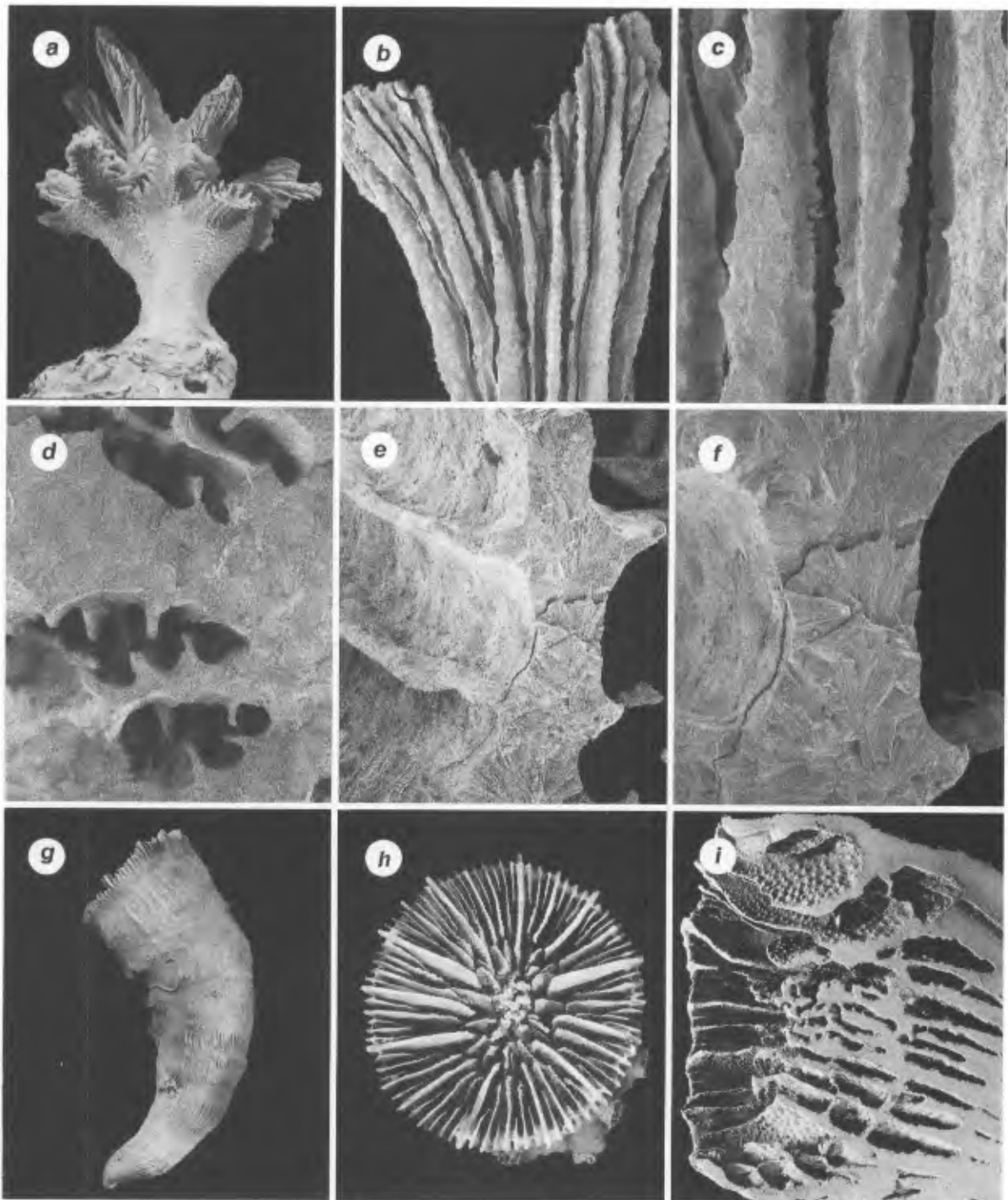


FIG. 16 a-f. — *Dactylotrochus cervicornis*, MUSORSTOM 7 stn 514: **a**, side view of corallum (MNHN), x 3.2; **b-e**, USNM 98746: **b**, bifurcated extension, x 11.8; **c**, 3 septa viewed from above, x 51; **d**, cross section of several septa showing alternation of adjacent menianes, x 74; **e-f**, higher magnification of menianes and fibre arrangement on broken surface, x 150, x 300, respectively.

FIG. 16 g-i. — *Asterosmilia gigas*, MUSORSTOM 7 stn 515 (MNHN): **g-h**, side and calicular views, x 0.8, x 1.7, respectively; **i**, longitudinal section revealing dissepiments in upper corallum, x 2.5.

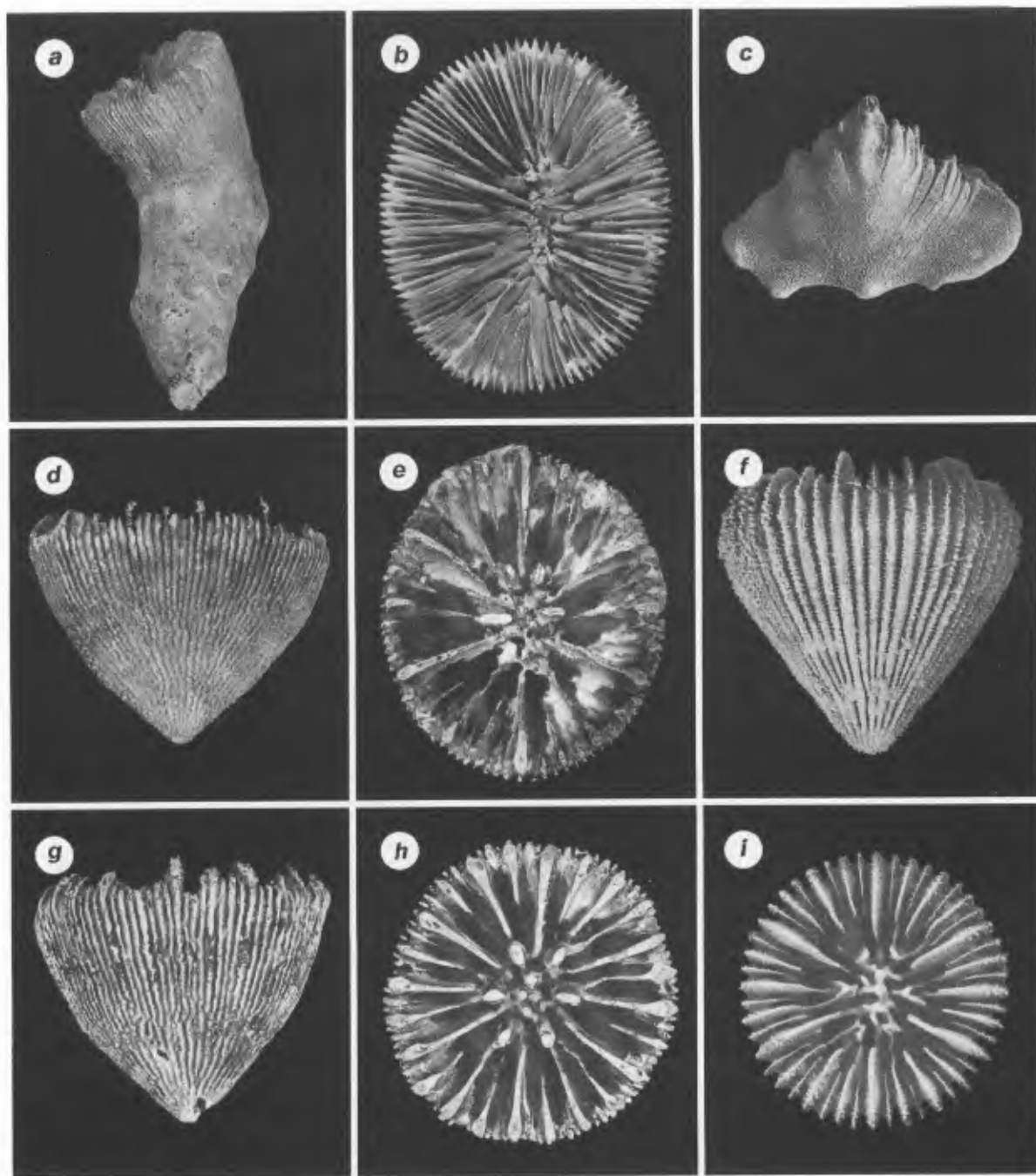


FIG. 17 a-b. — *Caryophyllia* (= *Asterosmilia*) *gigas*, holotype (BM 1939.7.20.851), side and calicular views, x 0.65, x 1.4, respectively.

FIG. 17 c. — *Tropidocyathus lessonii*, MUSORSTOM 8 stn 1016 (MNHN), side view of specimen with large edge crests, x 2.7.

FIG. 17 d-e. — *Pleotrochus venustus*, MUSORSTOM 8 stn 1114 (MNHN), side and calicular views, x 3.5, x 4.0, respectively.

FIG. 17 f. i. — *Cryptotrochus brevipalus*, holotype, MUSORSTOM 8 stn 1034 (MNHN), side and calicular views, x 4.5, x 4.3, respectively.

FIG. 17 g-h. — *Pleotrochus zibrowii*, MUSORSTOM 7 stn 637 (MNHN), side and calicular views, x 3.5, x 3.6, respectively.

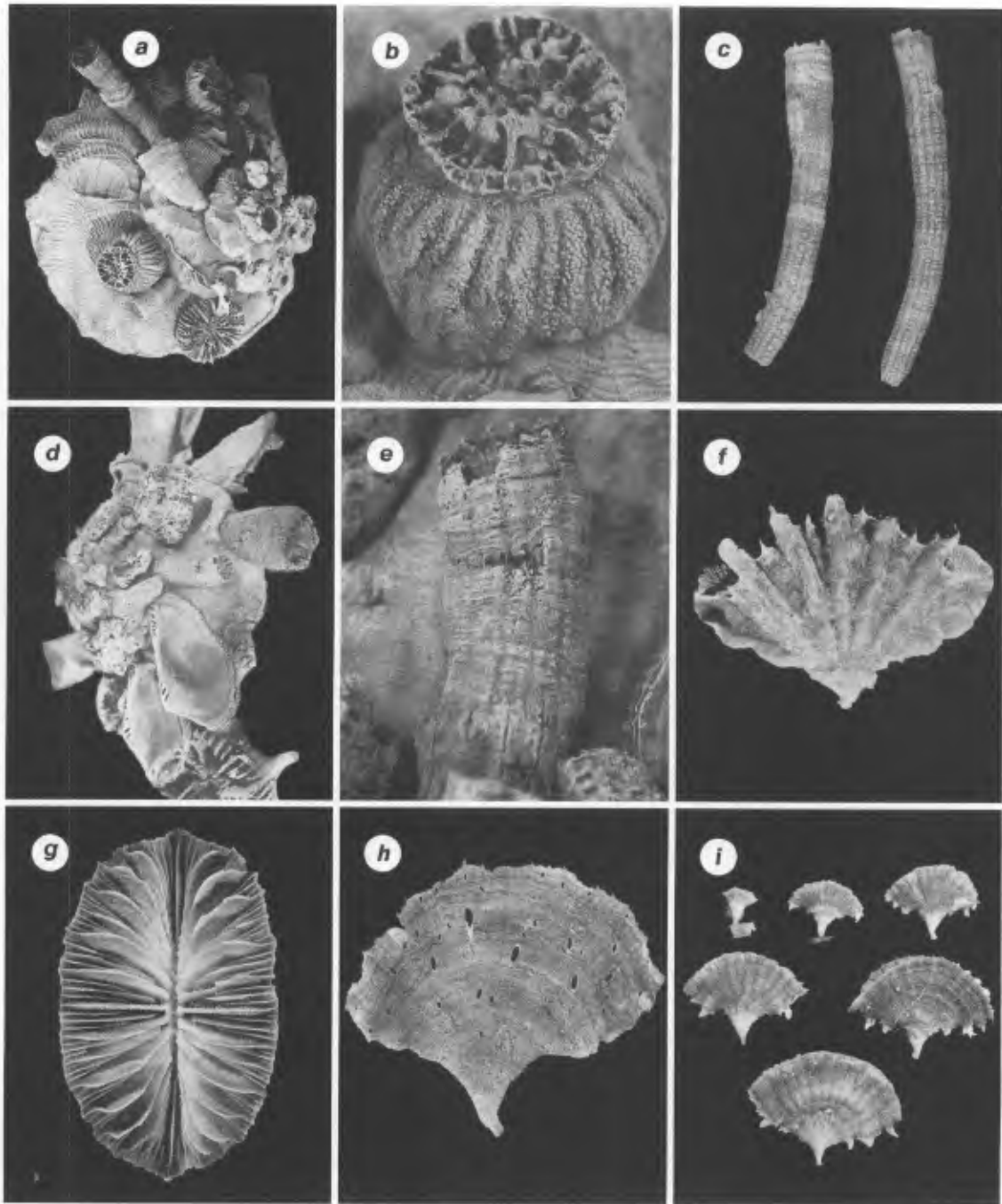


FIG. 18 a-b. — *Peponocyathus folliculus*, MUSORSTOM 8 stn 1088 (MNHN): a, specimen cemented to a *Xenophora* shell (*Trochocyathus discus* also attached on lower shell), x 1.5; b, oblique calicular view, x 9.5.

FIG. 18 c. — *Truncatogynia irregularis*, MUSORSTOM 8 stn 967 (MNHN), 2 coralla, x 2.2.

FIG. 18 d-e. — *Temnotrochus kermadecensis*, MUSORSTOM 8 stn 963 (MNHN): d, specimen cemented to a *Xenophora* shell, x 1.8; e, side view, x 12.1.

FIG. 18 f. — *Flabellum deludens*, MUSORSTOM 7 stn 532 (MNHN), side view, x 1.4.

FIG. 18 g-i. — *Flabellum pavoninum* forma *coalitum* (MNHN): g, MUSORSTOM 8 stn 1102, calicular view, x 1.6; h, MUSORSTOM 8 stn 1004, side view showing acrothoracican burrows, x 2.2; i, series of 6 coralla showing ontogenetic development of edge spines, x 0.75.

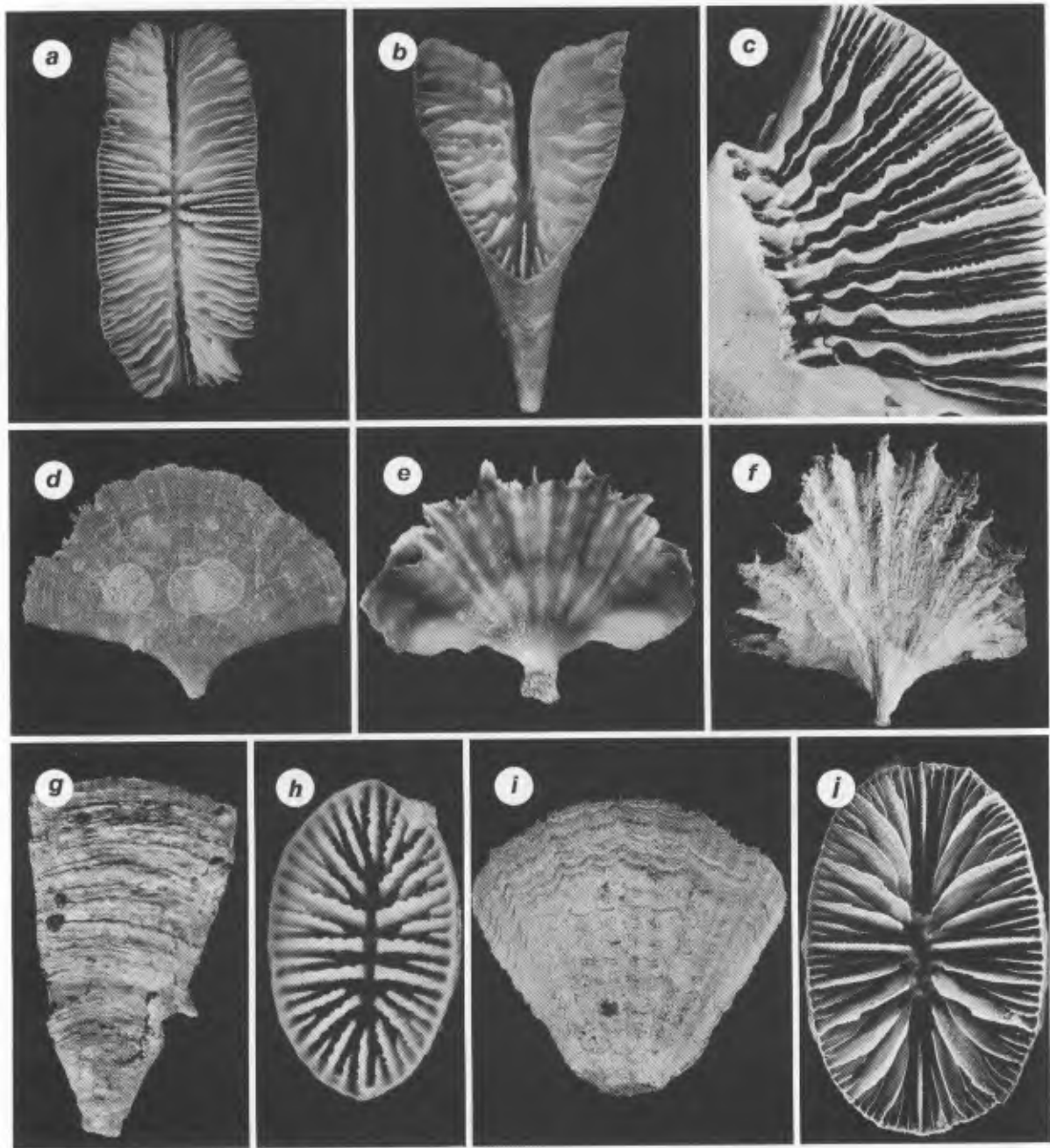


FIG. 19 a-d. — *Flabellum arcuatile*; **a-b, d**, holotype, NZOI stn 197 (NZOI H688), calicular edge, and side views, x 1.5, x 2.2, x 1.3, respectively. — **c**, paratype, MUSORSTOM 7 stn 535 (MNHN), broken corallum showing sinuosity of septal edges, x 2.5.

FIG. 19 e. — *Flabellum aotearoa*, MUSORSTOM 8 stn 1018 (MNHN), side view of juvenile corallum having large edge crests, x 3.0.

FIG. 19 f. — *Flabellum marcus*, MUSORSTOM 8 stn 1037 (MNHN), side view, x 1.3.

FIG. 19 g-h. — *Truncatoflabellum dens*, MUSORSTOM 8 stn 1060 (MNHN), side and calicular views, x 3.8, x 5.8, respectively.

FIG. 19 i-j. — *Truncatoflabellum stabile*, MUSORSTOM 8 stn 996 (MNHN), side and calicular views, x 1.7, x 2.1, respectively.

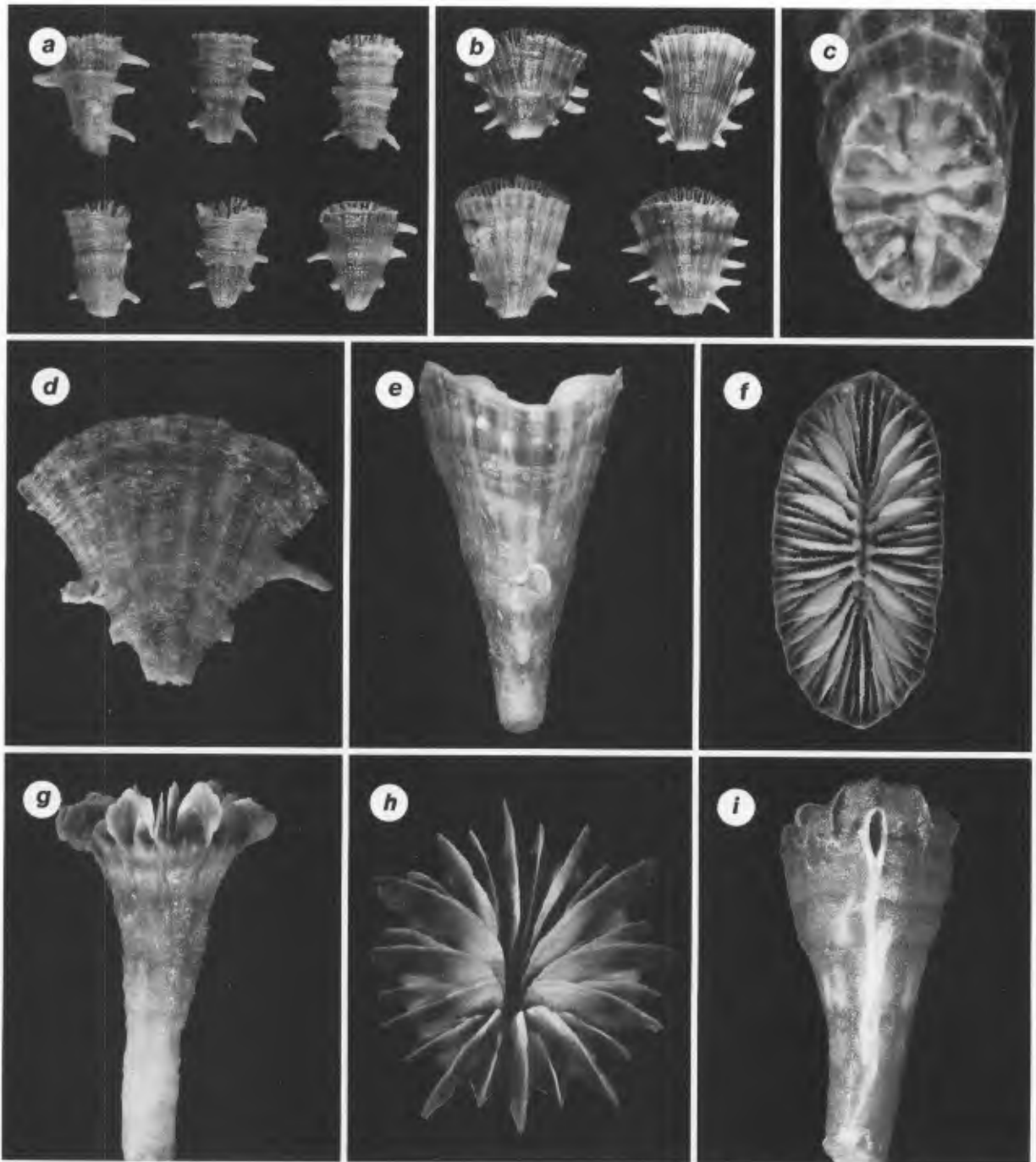


FIG. 20 a. — *Truncatoflabellum pusillum*, MUSORSTOM 8 stn 1097 (MNHN), series of 6 coralla, x 2.2.

FIG. 20 b. — *Truncatoflabellum angustum*, MUSORSTOM 8 stn 1018 (MNHN), series of 4 coralla, x 1.6.

FIG. 20 c-f. — *Truncatoflabellum vigintifarium* (MNHN): c, paratype, MUSORSTOM 8 stn 1106, basal scar of anthocyathus, x 9.0. — d-f, holotype, MUSORSTOM 8 stn 1098 (MNHN), side, edge, and calicular views, x 2.4, x 3.4, x 2.7, respectively.

FIG. 20 g-i. — *Javania fusca* (MNHN): g-h, MUSORSTOM 8 stn 1128 (MNHN), side and calicular views, x 2.9, x 4.2, respectively. — i, MUSORSTOM 8 stn 988 (MNHN), corallum with an acrothoracian burrow, x 4.6.

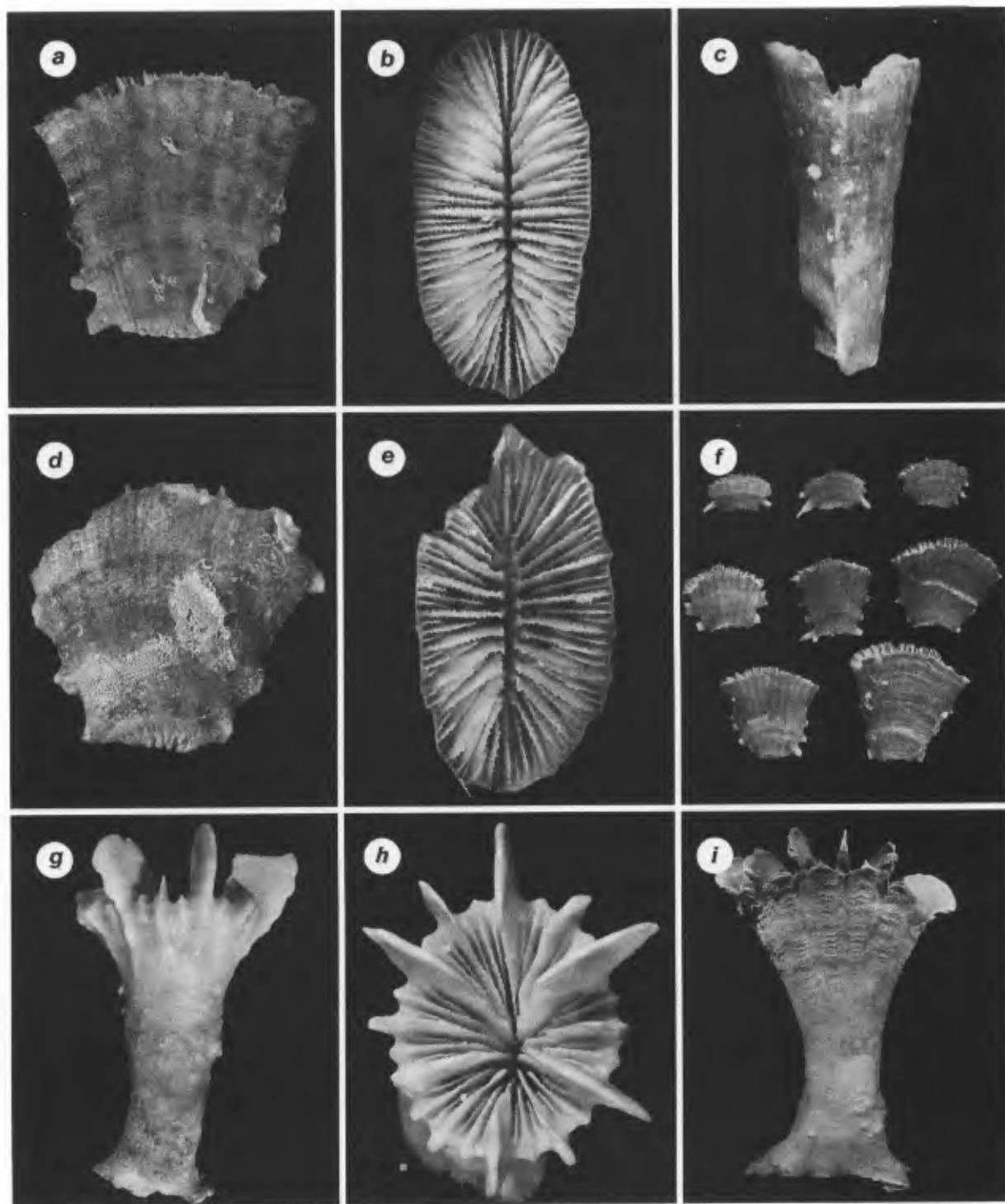


FIG. 21 a-f. — *Truncatoflabellum martensii*: a-c, f, MUSORSTOM 8 stn 1085 (MNHN): a-c, side, calicular, and edge views, x 2.2, x 2.9, x 2.4, respectively; f, series of 8 coralla showing ontogeny of anthocyathus, x 0.8. — d-e, holotype, Gazelle stn 40 (ZMB 1798), side and calicular views, x 2.2, x 2.8, respectively.
 FIG. 21 g-i. — *Javania exserta* (MNHN): g-h, holotype, KARUBAR stn 44 (MNHN), side and calicular views, x 2.4, x 3.4, respectively. — i, paratype, MUSORSTOM 1 stn 65 (MNHN), side view, x 1.5.

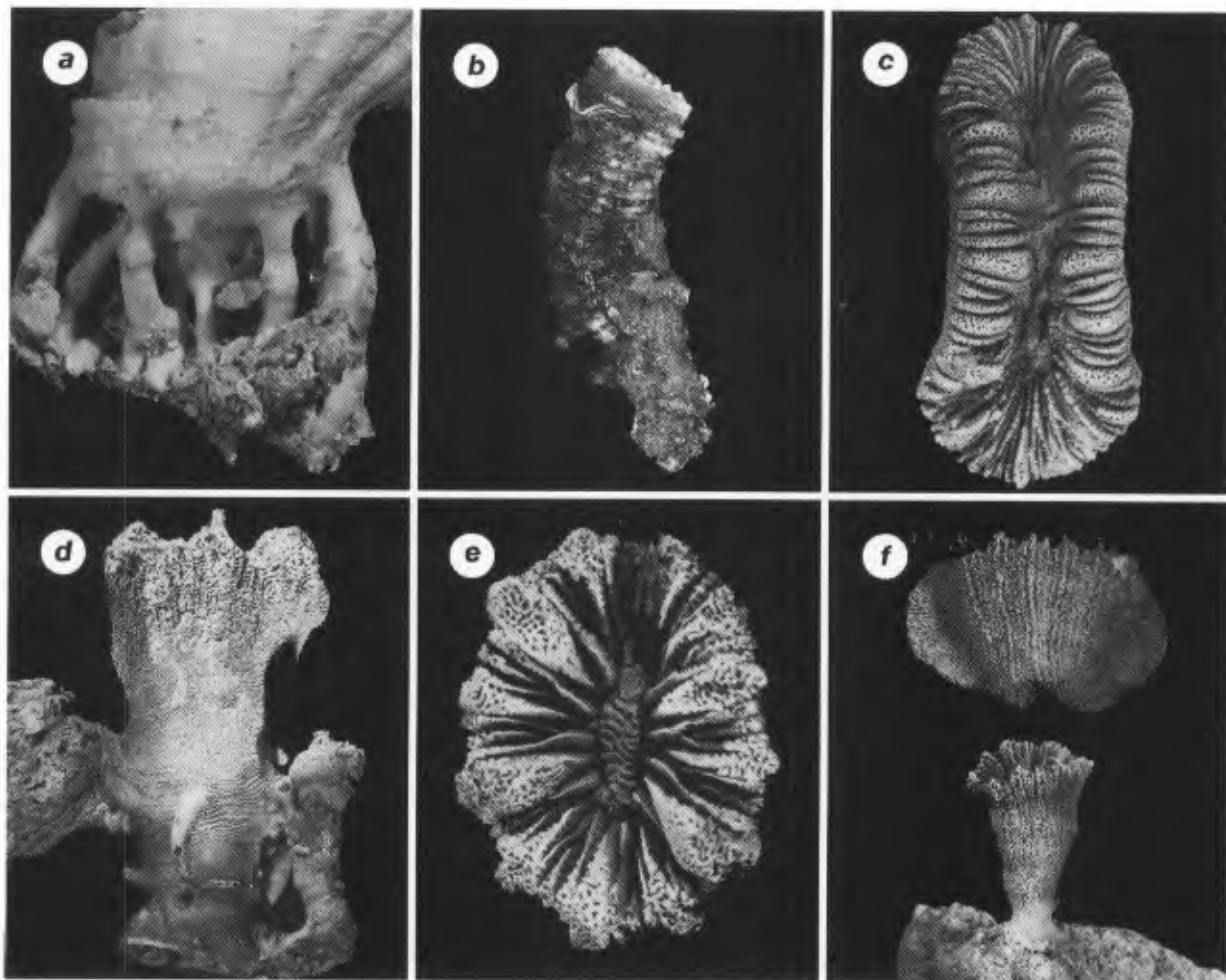


FIG. 22 a. — *Rhizotrochus typus*, MUSORSTOM 8 stn 1131 (MNHN), basal rootlets, x 2.2.

FIG. 22 b. — *Gardineria paradoxa*, MUSORSTOM 8 stn 1014 (MNHN), side view, x 1.6.

FIG. 22 c. — *Balanophyllia desmophyllioides*, MUSORSTOM 8 stn 1098 (MNHN), calice about to undergo intratentacular division, x 3.0.

FIG. 22 d-e. — *Balanophyllia laysanensis*, MUSORSTOM 8 stn 963 (MNHN), side and calicular views, x 3.7, x 5.3, respectively.

FIG. 22 f. — *Endopachys grayi*, MUSORSTOM 8 stn 976 (MNHN), anthocaulus and anthocyathus, x 2.8.

INDEX

Generic and subgeneric names used herein in combination with specific or subspecific names, or in citation, are given in parentheses. A slash (/) separates variant spellings; spellings retained herein in first position.

Taxa of generic and species level that receive full taxonomic treatment herein are in **bold**.

Page numbers in **bold** refer to full taxonomic treatment; page numbers in *italics* refer to illustrations.

Index does not include the station list (pages 32-43) and the geographic distribution Table 2 (pages 48-51).

- abrupta* (*Caryophyllia*) **71-72**, 113, 146
abyssorum (*Caryophyllia*) 73
Acanthocyathus 76
Acinocyathus 84, **90**
aculeatum (*Flabellum*, *Truncatoflabellum*) **123**
Alatotrochus **108-109**
alberti (*Caryophyllia*) 74
alcocki (*Dendrophyllia*, *Sclerhelia*) 47, **136**
alternatus (*Heterocyathus*) **99-100**, 155
ambrosia (*Caryophyllia*) 49, **75-76**
amphelioides (*Dendrophyllia*, *Enallopsammia*) 136
Amphihelia 106
andamanicus (*Deltocyathus*) 63, 67
angiosomum (*Flabellum*) 116, 117
angustum (*Truncatoflabellum*) **121**, 161
annulata (*Guynia*) 48, 113-114
Anthemiphyllia **63-69**, 143-144
antillarum (*Caryophyllia*) 73
aotearoa (*Flabellum*, *Ulocyathus*) **117**, 160
apertum (*Flabellum*, *Ulocyathus*) **118-119**
Aplocyathus **84-86**
arbuscula (*Dendrophyllia*) **133-134**
arcuatile (*Flabellum*) 114, 116-117, 160
arnoldi (*Caryophyllia*) 74
Asterosmilia **107-108**, 157
asymmetros (*Conotrochus*) **101-102**, 114, 155-156
atlantica (*Caryophyllia*) 74
atlanticus (*Aulocyathus*) 104
Aulocyathus **103-104**, 156
australiensis (*Peponocyathus*) 111
- Balanophyllia* 47, **129-130**, 163
barbadensis (*Caryophyllia*) 72
Bathyaectis **57-58**, 163
Blastotrochus 132
Bourneotrochus 84, **87-88**, 149, 151
brevipalus (*Cryptotrochus*) **112**, 158
brevispina (*Aplocyathus*, *Trochocyathus*) **85-86**, 150
brunneus (*Conotrochus*, *Pleurocyathus*) 101
- cailenti* (*Javania*) 127
calcar (*Deltocyathus*) 96
calveri (*Caryophyllia*) **73-74**, 146
cameratus (*Deltocyathus*) **95**, 153-154
candeanum (*Flabellum*, *Truncatoflabellum*) **123-124**
- carolinensis* (*Cryptotrochus*) 112
Caryophyllia 46, 49, **69-76**, 80, 107, 146
caryophylloides (*Trochocyathus*) 82
catinata (*Anthemiphyllia*) 67
Ceratotrochus 77, 109
cervicornis (*Dactylotrochus*, *Tridacophyllia*) **106-107**, 157
circularis (*Oxysmilia*) **78**, 147
Citharocyathus 111
Cladopsammia 129
clavus (*Caryophyllia*) 46, 70
coalitum (*Flabellum*) 115, 116, 159
cochlea (*Heteropsammia*, *Madrepora*) 132-133
Coenopsammia 46
complicata (*Stephanophyllia*) **60**
concinna (*Vaughanella*) 49, **90-91**, 152
conicus (*Citharocyathus*, *Notocyathus*) 48, **111**
Conotrochus **100-102**, 155-156
cooperi (*Trochocyathus*, *Tropidocyathus*) **83-84**
corniculans (*Balanophyllia*) 129
corniformis (*Caryophyllia*) 72
coronatus (*Odontocyathus*, *Platycyathus*, *Stephanocyathus*) 49, **89**, 152
corrugata (*Caryophyllia*) 75
corrugata (*Oxysmilia*) **78-79**, 147-148
corrugatus (*Deltocyathus*) 96, **98**
costata (*Anthemiphyllia*) 64, **66-67**, 68, 144-145
crassiseptum (*Deltocyathus*) **94-95**, 153
crassithecra (*Balanophyllia*) 103
Crispatotrochus **76-77**, 147
cristagalli (*Desmophyllum*) 105, 126
crosnieri (*Caryophyllia*) **70**, 146
Cryptotrochus **112**, 158
Culicia 46
Cyathoceras 76
Cyathohelia 61
Cyathotrochus **110-111**
cylindrica (*Dendrophyllia*) 133
Cryptotrochus 109
- Dactylotrochus* **106-107**, 157
delicatum (*Desmophyllum*) 105
Deltocyathoides **111**
Deltocyathus 47, 48, 63, 67, 69, 87, **91-98**, 111, 114, 152-154
deludens (*Flabellum*, *Ulocyathus*) **117**, 118, 159

- Dendrophyllia* 47, 129, 133-134
dens (*Flabellum*, *Truncatoflabellum*) 120, 121, 160
dentata/dentatus (*Anthemiphyllia*, *Discotrochus*) 63-65, 66, 68
desmophyllioides/desmophylloides (*Balanophyllia*) 129-130, 163
Desmophyllum 104-105, 124, 126
dianthus (*Desmophyllum*, *Madrepora*) 104-105
diomedaeae (*Caryophyllia*) 74
diomedaeae (*Crispatotrochus*) 76
Discotrochus 63, 67
discus (*Trochocyathus*) 48, 84, 113, 150, 159

efateensis (*Trochocyathus*) 82, 149
Eguchipsammia 129
elongata (*Caryophyllia*) 70
Enallopsammia 46, 47, 134-135
Endopachys 49, 132, 163
epithecata (*Oxysmilia*) 79, 147-148
exserta (*Javania*) 126-127, 162

flabelliformis (*Rhizotrochus*) 127
Flabellum 46, 47, 110, 115-119, 123, 124, 127, 159-160
flatiliseptis (*Sabinotrochus*) 89, 152
folliculus (*Peponocyathus*, *Stephanophyllia*) 48, 49, 113, 159
formosa (*Cyathohelia*, *Madrepora*, *Sclerohelia*) 61, 143
formosissima (*Letepsammia*) 59
formosum (*Truncatoflabellum*) 122
formosus (*Deltocyathus*) 92
fragilis (*Deltocyathus*) 91
fragilis (*Fungiacyathus*) 46, 55, 57, 58
franki (*Letepsammia*) 59
frustum (*Anthemiphyllia*) 64
fulvus (*Polycyathus*) 87
Fungiacyathus 46, 48, 54-58, 142-143
funicolumna (*Ceratotrochus*, *Conotrochus*) 100-101, 103
furanaensis (*Polycyathus*) 87
fusca (*Javania*, *Placotrochus*) 125-126, 161
gardineri (*Lochmaetrochus*) 102-103, 156
Gardineria 126, 128-129, 163
gemma (*Balanophyllia*, *Thecopsammia*) 131
gigas (*Asterosmilia*, *Caryophyllia*, *Rhizosmilia*) 107-108, 157-158
gigas (*Balanophyllia*) 131
granulosus (*Bathyactis*, *Fungiacyathus*) 58
grayi (*Acanthocyathus*, *Caryophyllia*) 76
grayi (*Endopachys*) 132, 163
Guynia 48, 113-114

Haplophyllia 128
hastatus (*Acinocyathus*, *Aplocyathus*, *Stephanocyathus*, *Trochocyathus*) 84-85, 87
hawaiiensis (*Caryophyllia*) 69-70
hawaiiensis (*Gardineria*) 126, 128
hellena (*Madracis*) 46, 53-54

heteroclitus (*Deltocyathus*) 48, 69, 96, 97-98, 154
Heterocyathus 98-100, 155
Heteropsammia 132-133
hodgsoni (*Polycyathus*) 87
hoffmeisteri (*Flabellum*, *Ulocyathus*) 118
horsti (*Dendrophyllia*) 133

Idiotrochus 112-113
ijimai (*Dendrophyllia*) 133
impensum (*Flabellum*) 116
inconstans (*Truncatoflabellum*) 119
interjecta (*Madracis*) 53
investigatoris (*Discotrochus*) 63
irregularis (*Truncatoguynia*) 114, 159
italicus (*Deltocyathus*) 95, 111
ixine (*Odontocyathus*, *Stephanocyathus*) 89

Javania 124-127, 162
javanus (*Cryptotrochus*) 112
juvenescens (*Aulocyathus*) 104, 156

kauaiensis (*Madracis*) 53-54, 142
kauaiensis (*Madrepora*) 61
kermadecensis (*Temnotrochus*) 48, 114-115, 159
kikutii (*Idiotrochus*, *Placotrochides*) 112-113
knoxi (*Flabellum*) 116

labidus (*Tropidocyathus*) 48, 110, 143
Labyrinthocyathus 77
lamellifera (*Caryophyllia*) 74-75
lamprotichum (*Desmophyllum*, *Javania*) 124, 125
latum (*Flabellum*) 127
laysanensis (*Balanophyllia*) 130, 163
lessonii/lessoni (*Flabellum*, *Tropidocyathus*) 108, 158
Letepsammia 59
levidensis (*Rhizotrochus*) 46, 127
limatulus (*Ceratotrochus*, *Labyrinthocyathus*) 77
Lochmaetrochus 102-103, 156
longispina (*Aplocyathus*, *Trochocyathus*) 85
Lophelia/Lophohelia 61, 105-106

mabahithi (*Caryophyllia*) 72
macrolobata (*Anthemiphyllia*) 64, 66, 144
maculatus (*Trochocyathus*) 81-82
Madracis 46, 53-54, 142
Madrepora 61-62, 105, 132, 143
magnificus (*Deltocyathus*) 47, 91-92, 152
marcus (*Flabellum*, *Ulocyathus*) 46, 118, 160
margaretae (*Bathyactis*, *Fungiacyathus*) 57, 58, 143
marigondoni (*Polycyathus*) 87
marmorea (*Caryophyllia*) 72-73, 146
martensii (*Flabellum*, *Truncatoflabellum*) 124, 162

- matricidus* (*Aulocyathus*) 104
minutiseptum (*Madrepora*) 61-62
mortenseni (*Truncatoflabellum*) 122-123
multicarinatus (*Fungiacyathus*) 55
multidentata (*Anthemiphyllia*) 64, 65, 144
musorstomica (*Gardineria*) 128

neglecta (*Stephanophyllia*) 59, 60
Neohelia 46, 47, 62
norfolkensis (*Polycyathus*) 87
Notocyathus 48, 111
nutrix (*Blastotrochus*) 132

octonaria (*Caryophyllia*) 71, 72
octopali (*Caryophyllia*) 72
octuplus (*Polycyathus*) 86-87, 151
oculata (*Madrepora*) 61, 143
oculeus (*Lochmaetrochus*) 103
Oculina 60
Odontocyathus 89-90, 152
oreophila (*Vaughanella*) 90
orientalis (*Deltocyathoides*, *Deltocyathus*) 111
ornatus (*Deltocyathus*) 96, 97, 98, 154
Oulangia 46
Oxysmilia 78-79, 147-148

pachythea (*Javania*) 125-126
pacifica (*Anthemiphyllia*) 64, 65-66, 143
pacifica (*Caryophyllia*) 46
pacificus (*Fungiacyathus*) 55, 56
paliferus/palifera (*Bathyactis*, *Fungiacyathus*)
55, 57, 143
panda (*Caryophyllia*) 74
papuensis (*Phyllangia*) 46
paradoxa (*Gardineria*, *Haplophyllia*) 128-129,
163
paripavoninum (*Truncatoflabellum*) 119, 124
patelliformis (*Trochocyathus*) 82-83, 149-150
patera (*Anthemiphyllia*) 64, 67
patagonichum (*Flabellum*) 118
paucipalata (*Caryophyllia*) 70
pavoninum (*Flabellum*) 46, 47, 115-116, 159
Peponocyathus 48, 49, 111, 113, 159
percutia (*Caryophyllia*) 73, 74
pertusa (*Lophelia*, *Madrepora*) 105-106
philippinensis (*Trochocyathus*) 81
phoenix (*Truncatoflabellum*) 121
Phyllangia 46
pileus (*Cyathotrochus*, *Trochocyathus*,
Tropidocyathus) 110-111
Placotrochides 112
Placotrochus 125
Platyrochus 108
Pleotrochus 109, 158
Polycyathus 86-87, 151
polygona (*Caryophyllia*) 74
Polymyces 49, 128
porcellana (*Madrepora*, *Neohelia*) 46, 47,
62-63
pourtalesi (*Deltocyathus*) 95

primordialis (*Tridacophyllia*) 106-107
profunda (*Asterosmilia*) 108
prolifera (*Lophelia*, *Madrepora*) 105
pseudoalabastra (*Javania*) 127
pusillum (*Truncatoflabellum*) 120, 121, 161

quadrigenaria (*Caryophyllia*) 73-74

raukawaensis (*Flabellum*) 118
recidivus (*Aulocyathus*, *Ceratotrochus*) 103,
104
rediviva (*Balanophyllia*) 130-131
regius (*Stephanocyathus*) 88-89, 151, 152
Rhizopsammia 129
Rhizosmilia 81, 107
Rhizotrochus 46, 127, 163
rhombocolumna (*Trochocyathus*) 81
Rhombopsammia 59
robusta (*Rhizosmilia*) 107
rostrata (*Amphihelia*, *Enallopsammia*) 46, 47,
134-135
rotulus (*Deltocyathus*, *Trochocyathus*) 91-92
rotundifolia (*Oxysmilia*) 78
rubescens (*Alatotrochus*, *Platyrochus*,
Sphenotrochus) 108-109
rubescens (*Crispatotrochus*, *Cyathoceras*)
76-77
rugosa (*Caryophyllia*) 71, 72, 75
rugosus (*Crispatotrochus*) 77, 147

Sabinotrochus 89
sandoi (*Fungiacyathus*) 55, 56-57, 142
Sclerhelia/Sclerohelia 61, 134
scobinosa (*Caryophyllia*) 46, 75
secta (*Caryophyllia*) 72
semperi (*Trochocyathus*) 83
sibogae (*Fungiacyathus*) 54
sibogae (*Stephanotrochus*) 89
singularis (*Madracis*) 46, 53-54
smithii (*Caryophyllia*) 70
solida (*Caryophyllia*) 73
sp. A (*Fungiacyathus*) 55
Sphenotrochus 108
spinifera (*Anthemiphyllia*) 64, 67-69, 97,
145
spinifera (*Acinocyathus*, *Odontocyathus*,
Stephanocyathus, *Stephanotrochus*) 90
stabile (*Flabellum*, *Truncatoflabellum*) 49,
119, 160
stella (*Deltocyathus*) 96-97, 154
stellulatus (*Bourneotrochus*, *Deltocyathus*) 84,
87-88, 149, 151
Stephanocyathus 49, 84, 88-90, 151-152
Stephanophyllia 59-60, 113
Stephanotrochus 89, 90
stephanu (*Bathyactis*, *Fungiacyathus*) 54,
55, 57
subcornigera (*Dendrophyllia*) 133
sulcatus (*Heterocyathus*, *Stephanoseris*) 98-99,
100, 114, 155

- suluensis* (*Deltocyathus*) 91, 92, 93
- taiwanicus* (*Deltocyathus*) 92-93, 153
- Temnotrochus* 48, 114-115, 159
- tenuescens* (*Desmophyllum*, *Thalamophyllia*)
105
- tenuicalyx* (*Trochocyathus*) 81
- tenuis* (*Lophohelia*, *Madrepora*) 61, 143
- Tethocyathus 86**
- Thalamophyllia 105**
- Thecopsammia* 131
- trapezoideum* (*Truncatoflabellum*) 119
- Tridacophyllia* 106
- Trochocyathus* 48, 80-86, 87, 110,
149-150, 159
- Tropidocyathus* 48, 110, 158
- Truncatoflabellum* 49, 116, 119-124, 160-162
- Truncatoguyonia* 114, 159
- Tubastraea* 46
- typus* (*Rhizotrochus*) 127, 163
- Ulocyathus 117-119**
- vanuatu* (*Flabellum*, *Truncatoflabellum*) 123
- variabilis* (*Peponocyathus*) 113
- variegatus* (*Bathyactis*, *Fungiacyathus*) 48,
58, 143
- vasiformis* (*Trochocyathus*) 80, 149
- Vaughanella* 49, 90-91, 152
- vaughani* (*Deltocyathus*) 93-94
- venustus* (*Ceratotrochus*, *Cryptotrochus*,
Pleotrochus) 109, 158
- venustus* (*Notocyathus*) 111
- veroni* (*Bourneotrochus*) 87
- vigintifarium* (*Truncatoflabellum*) 121-122,
161
- virgatus* (*Tethocyathus*, *Trochocyathus*) 86
- virgosa* (*Oculina*) 60
- weberianus* (*Odontocyathus*, *Stephanocyathus*,
Stephanotrochus) 89-90
- wellsi* (*Polymyces*) 49, 128
- willeyi* (*Coenopsammia*) 46
- Xenophora* 48, 58, 60, 71, 88, 97, 111, 113, 114, 115,
120, 143, 159
- zibrowii* (*Cryptotrochus*, *Pleotrochus*) 109, 112,
158
- zopyros* (*Caryophyllia*) 73