

corium and cuneus pale luteous; clavus, a transverse fascia beyond

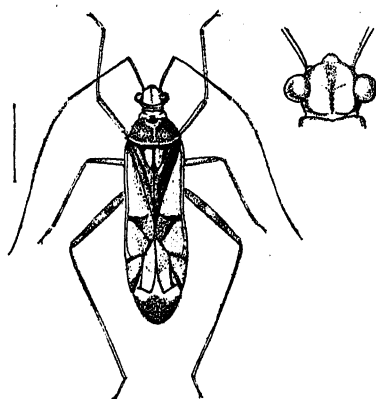


Fig. 264.—*Onomaeus pompeus*.

Length 10 millim.

Hab. Assam; Nāga Hills (*Doherty*). Burma (*Coll. Dist.*).

Genus **CALLICRATIDES**, nov.

Type, *C. rama*, Kirby.

Distribution. Ceylon.

Body oblong; head with eyes much broader than anterior margin of pronotum, disk between eyes with a flat shield-like process, which extends to the antenniferous tubercles, but does not quite reach base, distinctly longitudinally impressed or finely sulcate, apex porrectly deflected in front of this process; antennæ inserted in front of the eyes, basal joint incrassate, about as long as head, moderately curved outwardly, second joint longest, moderately thickened, about four times as long as the first; rostrum not quite reaching the posterior coxæ; pronotum about as long as broad, obsolete constricted at about one-third from apex, narrowed anteriorly, basal twice the width of anterior margin; scutellum moderately long, tumid, subdepressed and longitudinally sulcate; hemelytra hyaline; corium with cuneus just passing abdominal apex, cuneus longer than broad; membrane with a long basal cell; legs of moderate length, posterior femora longest and incrassate.

By the structure of the hemelytra resembling *Hyalopeplus*, Stål, but differing entirely from it by the structure of the head.

1358. *Callicratides rama*, Kirby (*Capsus*), *J. Linn. Soc., Zool.* xxiv, p. 106 (1891); *Kirk.* (*Hyalopeplus*) *J. Bomb. N. H. Soc.* xiv, p. 58, pl. A, f. 8, pl. B, f. 6 (1902).

Pale ochraceous; antennæ sometimes fuscous, sometimes with