

EFST Í FJÖRU



Dvergþang
Channelled wrack
(*Pelvetia canaliculata*)



Klapparþang
Spiral wrack
(*Fucus spiralis*)

SKERJAFJÖRÐUR - LÍFRÍKI FJÖRUNNAR



Við norðanverðan Skerjafjörð eru viðamiklar þangfjörur. Fjörurnar eru nokkuð stórgrýttar en vel aðgengilegar. Þar er mikill þörungavöxtur, einkum þangtegundir og þari en dýralíf er einnig mjög fjölskrúðugt. Á köflum er fjaran beltaskipt og vaxa ólíkar þangtegundir í hverju belti fyrir sig. Skiltið sýnir nokkrar af algengari lífverutegundum sem finnast í þangfjörunum.



Klettadoppa
Rough periwinkle
(*Littorina saxatilis*)

The shoreline of southwestern Reykjavík is a sheltered, rocky shoreline with both brown and red algae in great abundance, especially species of sea-weed and kelp. A diverse animal fauna also inhabits the rocky shore habitat. The shore is sometimes divided into zones with different species occurring in each zone. This sign shows some of the most common species of the rocky shoreline.

MÍÐ FJARA



Bölupang
Bladder wrack
(*Fucus vesiculosus*)



Þangskegg
Tube weed
(*Polysiphonia lanosa*)



Klóþang
Knotted wrack
(*Ascophyllum nodosum*)



Fjörugrös
Irish moss
(*Chondrus crispus*)



Þangdoppa
Flat periwinkle
(*Littorina obtusata*)



Bogkrabbi
Common shore crab
(*Carcinus maenas*)



Þanglús
Isopod
(*Idotea granulosa*)



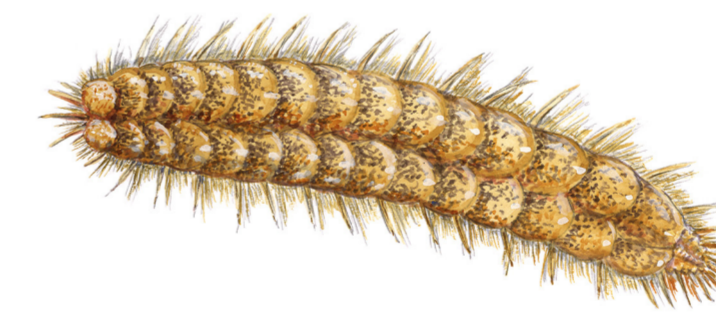
Snúðormar
Spiral tubeworms
(*Spirorbis* spp.)



Söl
Dulse
(*Palmaria palmata*)



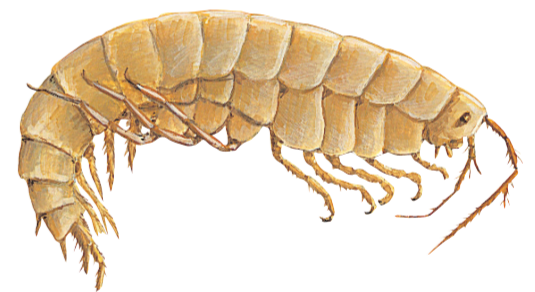
Fjörukárlar
Acorn barnacles
(*Semibalanus balanoides*)



Hreisturbakur
Scale worm
(*Harmothoe imbricata*)



Nákuðungur
Dog whelk
(*Nucella lapillus*)



Marfló
Amphipod
(*Gammarus* spp.)

NEÐST Í FJÖRU



Stórþari
Dog whelk
(*Nucella lapillus*)



Sagþang
Toothed wrack
(*Fucus serratus*)



Sprettfiskur
Butterfish
(*Pholis gunnellus*)

Teikningar: Jón Baldur Hlíðberg.
Texti og útlit: Snorri Sigurðsson
Umhverfis- og skipulagssvið Reykjavíkur



Stórkrossi
Common starfish
(*Asterias rubens*)



Marhnútur
Short-horned sculpin / Bull-rout
(*Myoxocephalus scorpius*)