



N-terminal palmitoylation is required for *Toxoplasma gondii* HSP20 inner membrane complex localization

M.G. De Napoli^a, N. de Miguel^a, M. Lebrun^b, S.N.J. Moreno^c, S.O. Angel^a, M.M. Corvi^{a,*}

^a Laboratorio de Parasitología Molecular, Instituto de Investigaciones Biotecnológicas-Instituto Tecnológico de Chascomús (IIB-INTECH), Universidad Nacional de San Martín (UNSAM), Consejo Nacional de Investigaciones Científicas y Técnicas (CONICET), Intendente Marino Km 8.2 (B7130) Chascomús, Provincia de Buenos Aires, Argentina

^b UMR 5235 CNRS, Université de Montpellier 2, 34095 Montpellier, France

^c Department of Cellular Biology and Center for Tropical and Emerging Global Diseases, University of Georgia, Athens, 30602, USA

ARTICLE INFO

Article history:

Received 23 December 2012

Received in revised form 14 February 2013

Accepted 19 February 2013

Available online 26 February 2013

Keywords:

Toxoplasma gondii

Small heat shock protein 20

Palmitoylation

Inner membrane complex

Endodyogeny

ABSTRACT

Toxoplasma gondii is an obligate intracellular parasite and the causative agent of toxoplasmosis. Protein palmitoylation is known to play roles in signal transduction and in enhancing the hydrophobicity of proteins thus contributing to their membrane association. Global inhibition of protein palmitoylation has been shown to affect *T. gondii* physiology and invasion of the host cell. However, the proteins affected by this modification have been understudied. This paper shows that the small heat shock protein 20 from *T. gondii* (TgHSP20) is synthesized as a mature protein in the cytosol and is palmitoylated in three cysteine residues. However, its localization at the inner membrane complex (IMC) is dependent only on N-terminal palmitoylation. Absence or incomplete N-terminal palmitoylation causes TgHSP20 to partially accumulate in a membranous structure. Interestingly, TgHSP20 palmitoylation is not responsible for its interaction with the daughter cells IMCs. Together, our data describe the importance of palmitoylation in protein targeting to the IMC in *T. gondii*.

© 2013 Elsevier B.V. All rights reserved.

1. Introduction

Fatty acylation of proteins is a widespread feature of eukaryotic cells. This post-translational modification (PTM) plays a key role in membrane localization of signal-transducing proteins [1,2] as well as in regulation of mitochondrial metabolism [3,4]. Fatty acylation includes myristoylation and palmitoylation. Whereas myristoylation refers to the irreversible attachment of 14-carbon myristate in a co-[5,6] or post- [7–10] translational manner, palmitoylation is the post-translational attachment of the 16-carbon fatty acid palmitate onto cysteine residues via a labile thioester bond. Palmitate is transferred onto proteins enzymatically [11–13] or in a spontaneous manner [4,14] with both mechanisms being operational in cells.

Apicomplexan parasites are a large group of obligate intracellular parasites that include *Eimeria* spp., *Cryptosporidium* spp., *Neospora* spp., *Plasmodium* spp., *Theileria* spp. and *T. gondii*. Protein palmitoylation has been described to operate in *Eimeria tenella* [15], *Plasmodium falciparum* [16–19] and *Toxoplasma gondii* [15,20,21]. There are several proteins known or predicted to be palmitoylated in *T. gondii* [22]. In general, protein palmitoylation is important for proper membrane localization of the modified protein. In this regard, it has been described that mutation of the predicted palmitoylation sites in *T. gondii* inner

membrane complex sub-compartment protein 4 (ISP4) and calcium-dependent protein kinase 3 (CDPK3), alters their localization from the pellicle to the cytosol [23–25]. We recently described the functional significance of this modification in *T. gondii*, where inhibition of protein palmitoylation was able to interfere with the parasite's physiology and host-cell invasion [20]. Interestingly, the host-cell invasion process depends on an actin- and myosin-based complex located at the pellicle, between the plasma membrane (PM) and inner membrane complex (IMC) [26]. The same effect on host-cell invasion was observed in *P. falciparum* [27]. In general, these results underscore an important role for palmitoylation of IMC-associated proteins.

T. gondii small heat shock protein 20 (TgHSP20) displays interesting characteristics which could be used to study the role and dynamics of protein palmitoylation. TgHSP20 localizes to the parasite IMC in a set of discontinuous stripes [28]. Recombinant TgHSP20 forms multimers [29], binds phosphatidylinositol 4-phosphate and phosphatidylinositol 4,5 biphosphate phospholipids [28] and has chaperone activity in vitro [29]. It has been reported that antibodies against HSP20 reduce host-cell invasion by *Babesia divergens*, *T. gondii* and *Neospora caninum* [30,31]. In *Plasmodium*, deletion of the *hsp20* gene results in altered sporozoite speed and substrate adhesion leading to an impaired natural malaria transmission in the host [32,33]. Although HSP20 is predicted to be synthesized in the cytosol, it localizes to the IMC in *T. gondii* [28], *P. falciparum* [32] and to the pellicle in *Babesia* [34]. Moreover, in *T. gondii* HSP20 is incorporated to the IMC at intermediate stages of daughter cell formation [28]. Here, we confirmed that all the TgHSP20 cysteine residues are palmitoylated in vivo but only N-terminal

* Corresponding author at: Laboratorio de Parasitología Molecular, IIB-INTECH, Intendente Marino Km 8.2, PO Box 164 (B7130IWA) Chascomús, Prov. Buenos Aires, Argentina. Tel.: +54 2241 430323; fax: +54 2241 424048.

E-mail address: mcorvi@intech.gov.ar (M.M. Corvi).

palmitoylation is necessary for localization at the IMC. Interestingly, palmitoylation was not necessary for the interaction with the IMC of daughter cells during budding, as a non-palmitoylable version of TgHSP20 localized to the IMC along the daughter cell development. Finally, we discuss a possible model of palmitoylation events and sub-cellular localization of *T. gondii* HSP20 to the IMC.

2. Materials and methods

2.1. Antibodies and reagents

Specialized and common reagents were from Sigma, unless specified. [9,10-³H]-palmitic acid and [³⁵S]-methionine/[³⁵S]-cysteine were from PerkinElmer Life and Analytical Sciences. ECL Plus was from GE Biosciences. Alexa-conjugated secondary antibodies were from Molecular Probes. Tissue culture reagents were from Invitrogen. The serum anti-Ty was kindly provided by Dr Dubremetz (Université de Montpellier, France), anti-IMC1 antibody was generously provided by Dr Ward (University of Vermont, USA) and anti-SAG1 antibody was kindly provided by Dr. Marina Clemente (Universidad de San Martin, Argentina).

2.2. *Toxoplasma* and host-cell cultures

T. gondii tachyzoites of the RH Δ hxgprt strain [35] were used throughout the study. Parasites were maintained by serial passage on confluent monolayers of human foreskin fibroblasts (HFFs) in Dulbecco's Modified Eagle Medium (DMEM; Gibco BRL) supplemented with 10% v/v bovine serum albumin (BSA), 100 i.u. (international units)/ml penicillin and 100 μ g/ml streptomycin (Gibco BRL).

2.3. Metabolic labeling with [³H]-palmitic acid and immunoprecipitation

Freshly lysed (10⁹) tachyzoites were purified using a 3 μ m polycarbonate filter and incubated for 4 h with 100 μ Ci of [9,10-³H]-palmitic acid previously conjugated to BSA fatty acid free (1:1, mol:mol ratio). Then, the cells were washed twice with PBS and finally resuspended in 2 ml of immunoprecipitation buffer (IP buffer; 20 mM Tris-HCl, 150 mM NaCl, 1% TX-100 and complete protease inhibitor cocktail-Roche, pH 7.4). After incubation for 2 h with rotation at 4 °C, the lysate was centrifuged at 10,000 \times g for 10 min at 4 °C, the pellet was discarded and 5 μ l of the appropriate antiserum was added to the supernatant (rabbit anti-HSP20, rabbit preimmune or mouse anti-Ty, mouse preimmune). Protein A/G Plus sepharose (Santa Cruz Biotechnology) was then added (50 μ l of slurry previously equilibrated in IP buffer) and incubated 16–18 h with rotation at 4 °C. The immunocomplexes were washed three times with IP buffer and finally resuspended in SDS-PAGE loading buffer without any reducing agent. Each sample was divided in three: one gel was transferred to a PVDF membrane and Western blotted for the proteins (loading control). The other two gels were subjected to hydroxylamine treatment and its control.

2.4. Western blot analysis

An SDS-PAGE gel was used as a loading control of the immunoprecipitation. The gel was electrophoresed at 100 V for 1 h onto a PVDF membrane and blocked in 5% w/v skim milk in PBS (137 mM NaCl, 2.7 mM KCl, 10 mM Na₂HPO₄, 2 mM KH₂PO₄, pH 7.4) for 1 h. Then rabbit anti-HSP20 (1/1000) or mouse anti-Ty (1/500) serum was added and incubated for another hour followed by washes in PBS, PBS-T (PBS with 0.1% v/v Tween-20) and PBS. Secondary antibodies conjugated to HRP were added (1/10,000), incubated for 1 h followed by washes in PBS, PBS-T and PBS. Finally proteins were immunodetected by ECL Plus (GE healthcare).

2.5. Hydroxylamine treatment

Gels were treated with either 1 M Tris-HCl pH 7.0 (control) or with 1 M NH₂OH-NaOH pH 7.0 for 48 h, changing for fresh solutions every 12 h. Then the gels were stained with Coomassie Brilliant Blue, destained and incubated for 30 min in ddH₂O. Finally the gels were incubated for 30 min in 1 M sodium salicylate pH 6.5, dried for 2 h at 80 °C using a gel dryer machine and exposed to autoradiographic film typically for a month.

2.6. In silico analyses

Analysis of HSP20 amino acid sequence in Apicomplexa was performed using *T. gondii* (TgHSP20; NCBI accession number AAT66039), *N. caninum* (NcHSP20; NCBI accession number CD537778), *E. tenella* (EtHSP20; NCBI accession number AI758032), *P. falciparum* (PfHSP20; NCBI accession number CAD51208), *Plasmodium berghei* (PbHSP20; NCBI accession number AAL07529), *Plasmodium vivax* (PvHSP20; NCBI accession number XP_001615006), *Plasmodium yoelii yoelii* (PyyHsp20; NCBI accession number EAA16935), *Babesia bigemina* (BbiH2S20; NCBI accession number AAK11630), *Babesia bovis* (BbiHSP20; NCBI accession number AAK11624) and *Theileria parva* (TpHSP20; NCBI accession number XP_763804). BioEdit software version 4.0 (Ibis Biosciences) was used for multiple alignment and sequence analysis.

2.7. Treatment with 2-bromopalmitate

A monolayer of HFF cells was infected with *T. gondii* in a 24-well dish. After 10 min on ice, the parasites were allowed to invade for 1 h at 37 °C. Then, the cells were washed twice with PBS and the media was changed with a mix of 1% v/v of 100 μ M BSA fatty acid free and 2-bromopalmitate respectively (final concentrations). The infected cells were incubated for 16–18 h at 37 °C then were subjected to indirect immunofluorescence studies.

2.8. Indirect immunofluorescence studies

All the steps were carried out at room temperature. Media was discarded and the cells were washed twice with PBS. Cells were fixed with formaldehyde 4% v/v in PBS for 30 min followed by a 1 min wash in PBS. Then the cells were permeabilized with 0.3% v/v Triton X-100 in PBS for 20 min and blocked with 3% w/v BSA in PBS for 30 min. After this, appropriate primary antibodies were added diluted in 3% w/v BSA in PBS for 60 min followed by extensive washes. Anti-species secondary antibodies were added and incubated for another 60 min followed by extensive washes. Finally the samples were mounted with Fluoromont (Abcam). The primary antibodies used were: mouse monoclonal anti-Ty (1/200), rabbit anti-IMC1 (1/1000), mouse anti-IMC1 (1/2000), and rabbit anti-HSP20 (1/1000). Parasites were imaged using a Delta Vision deconvolution microscope (Applied Precision).

2.9. Generation of TgHSP20 mutants

To generate the TgHSP20_{FL}-Ty mutant version, the TgHSP20 ORF was amplified as previously described [28]. To change cysteine in position 3 to serine in TgHSP20, we used the following forward primer: 5'-AGATCTATGAGTTCCTCTGTGGCGGTAC-3' (altered nucleotide underlined), to change cysteine 4 to serine: 5'-AGATCTATGAGTTGCTCTGGCGGTAC-3' and to change cysteines 3 and 4 to serines: 5'-AGATCTATGAGTTCCTCTGTGGCGGTAC-3'. In order to replace cysteine in position 160 to serine we used the QuikChange® II XL site-directed mutagenesis kit (Agilent Technologies), using as a forward primer 5'-GTTGGA GGTTAAATCTCCTCCATTCAAACC-3' and the reverse primer 5'-AGGA GATTTTAACTCCAACAATCCATTTG-3'. The plasmid ptubHSP20_{FL}-Ty was used as template to generate ptubHSP20_{C160S}-Ty. The plasmid

ptubHSP20_{C3,4S}-Ty was used as template to generate TgHSP20_{C3,4,160S}-Ty. Mutations were verified by sequencing and 50 µg of the wild type and each mutagenized vector was transfected into RHΔ*hpt* parasites. The transfected populations were selected under xanthine and mycophenolic acid pressure and cloned by limiting dilution, as previously described [36].

2.10. Transmission electron microscopy analysis

Infected monolayers were rinsed with 2% glutaraldehyde in 0.1 M Na-phosphate buffer pH 7.4. Intracellular parasites were then pelleted for 2 min at full speed and floated in fresh fixative for 90 min. After two washes in phosphate buffer, cells were fixed using 1% osmium tetroxide in phosphate buffer during 1 h at RT. After washing in ddH₂O twice, the sample was dehydrated in ethanol and embedded in epon resin containing propylene oxide. Thin sections were obtained with a Leica ultramicrotome and collected in formvar-coated single hole grids.

3. Results

3.1. HSP20 is palmitoylated in *T. gondii* and the predicted palmitoylation sites are conserved across the phylum

TgHSP20 localizes to the IMC (Fig. 1A; [28]). However, its amino acid sequence neither contains a signal peptide (<http://www.cbs.dtu.dk/services/SignalP>), nor a predicted hydrophobic region or a

transmembrane domain (<http://www.vivo.colostate.edu/molkit/hydrophathy>). In addition, there is no evidence for maturation (Fig. 1B) that could explain its IMC localization. Hence, we decided to study whether post-translational modifications could account for its localization. In silico analysis shows that TgHSP20 could be subjected to several post-translational modifications (PTM) including phosphorylation, glycosylation with O-linked N-acetylglucosamine and palmitoylation (Fig. 1C). Of all these PTM, palmitoylation is the only modification that could facilitate TgHSP20 localization to the IMC. *T. gondii* HSP20 contains three cysteine residues at positions 3, 4 and 160 (C3, C4 and C160) all of which are predicted to be palmitoylated (Fig. 1C).

In order to experimentally confirm whether TgHSP20 is palmitoylated, we performed metabolic labeling of tachyzoites with [³H]-palmitic acid followed by immunoprecipitation. Fig. 1A shows that this protein is palmitoylated “in vivo”. Furthermore, TgHSP20 radiolabel was removed by neutral hydroxylamine treatment, confirming that the palmitic acid is bound to TgHSP20 through a labile thioester bond. It is important to highlight that the three cysteine residues found in TgHSP20 predicted to be palmitoylated, are conserved in Apicomplexa (Fig. 1B). These results could suggest that palmitoylation may be important for TgHSP20 localization and/or function in Apicomplexan parasites.

3.2. Palmitoylation of HSP20 is required for proper localization to the IMC

Since palmitoylation has been shown to localize soluble proteins to membranes, we tested whether protein palmitoylation was

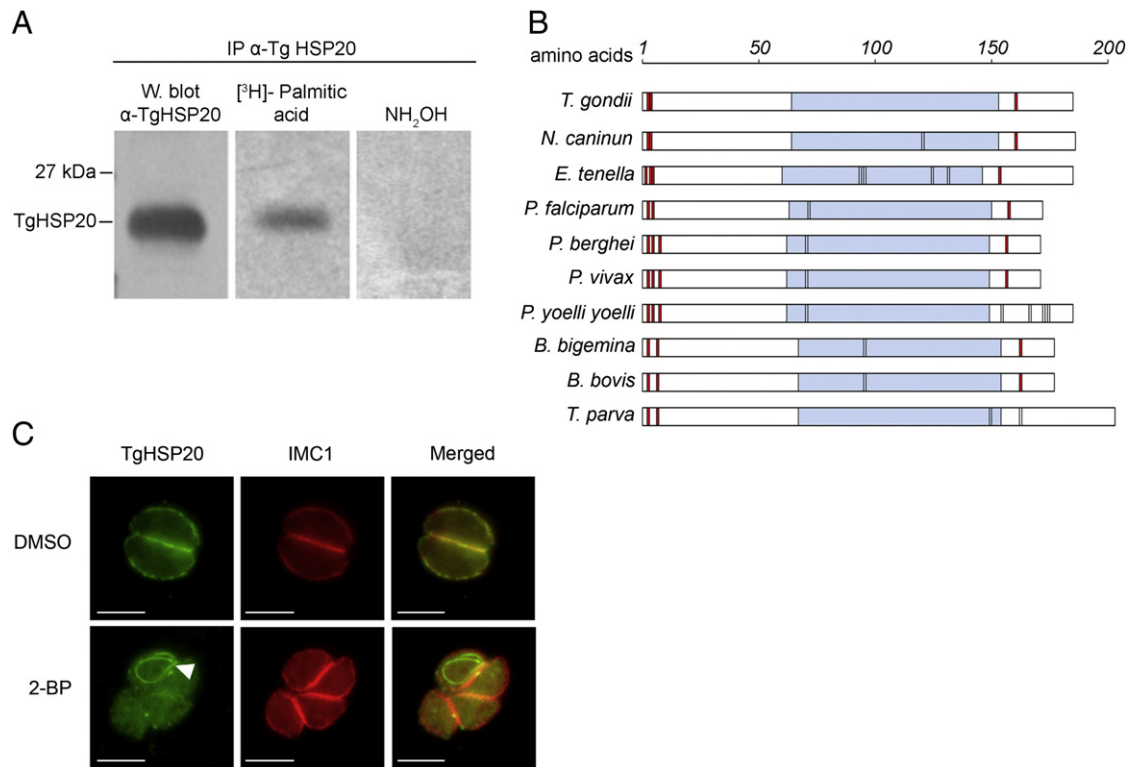


Fig. 1. TgHSP20 is palmitoylated in vivo and this modification is responsible for its IMC localization. A) TgHSP20 is palmitoylated in vivo. Metabolic labeling of wild type *T. gondii* parasites using [³H]-palmitic acid followed by specific immunoprecipitation with anti-TgHSP20 antibody. After the immunoprecipitation, the sample was divided in three and run on SDS-PAGE: one sample was used for Western blotting as a loading control. The two remaining samples were used to detect the radiolabeled HSP20 as indicated in the **Materials and methods**. B) Schematic representation of Apicomplexan HSP20 amino acid sequences. The analysis includes the amino acid sequences of HSP20 from *Toxoplasma gondii* (TgHSP20; NCBI accession number AAT66039), *Neospora caninum* (NcHSP20; NCBI accession number CD537778), *Eimeria tenella* (EtHSP20; NCBI accession number AI758032), *Plasmodium falciparum* (PfHSP20; NCBI accession number CAD51208), *Plasmodium berghei* (PbHSP20; NCBI accession number AAL07529), *Plasmodium vivax* (PvHSP20; NCBI accession number XP_001615006), *Plasmodium yoelii yoelii* (PyyHSP20; NCBI accession number EAA16935), *Babesia bigemina* (BbiHSP20; NCBI accession number AAK11630), *Babesia bovis* (BboHSP20; NCBI accession number AAK11624) and *Theileria parva* (TpHSP20; NCBI accession number XP_763804). Light-blue boxes indicate α -crystallin domain. Red boxes represent cysteine residues predicted to be palmitoylated. Black lines depict cysteine residues. C) TgHSP20 depends on palmitoylation for IMC localization. Intracellular parasites were treated for 16–18 h with either 100 µM 2-bromopalmitate (2-BP) or DMSO and then TgHSP20 localization was analyzed by indirect immunofluorescence. The localization of the protein IMC1 was unaffected by the treatment. An unknown structure stained with TgHSP20 antibodies is shown in cells treated with 2-BP (arrowhead). Scale bars = 5 µm.

responsible for TgHSP20 localization to the IMC. In order to do this, intracellular tachyzoites were incubated with the palmitoylation inhibitor 2-bromopalmitate (2-BP; [37]). Fig. 1C shows that TgHSP20

changes localization from the IMC to the cytosol and formed an unidentified structure after 2-BP treatment (white arrowhead), suggesting that TgHSP20 is anchored to the IMC by palmitoylation.

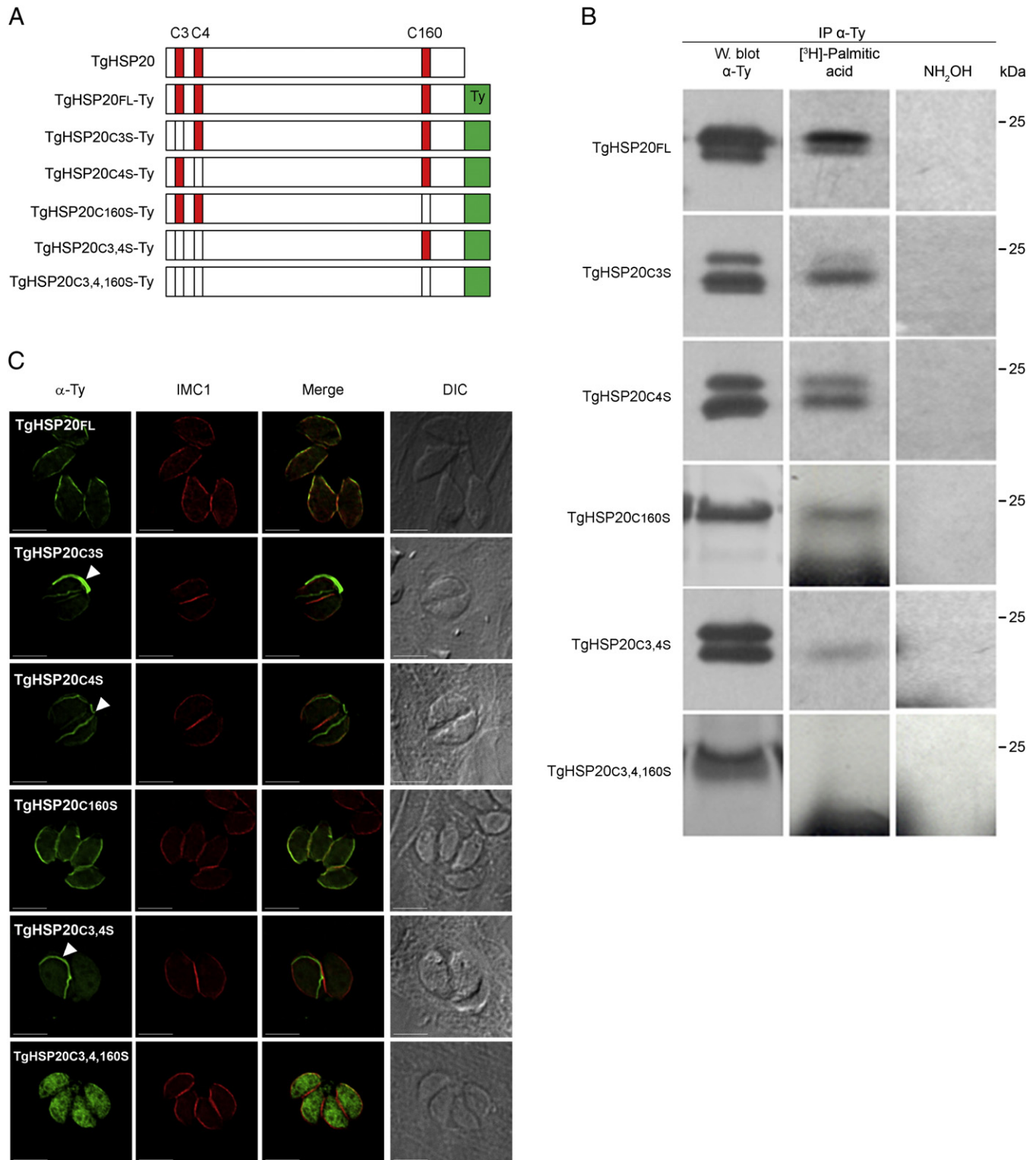


Fig. 2. TgHSP20 is palmitoylated in all its cysteine residues but only N-terminal palmitoylation determines TgHSP20 localization to the IMC. A) Schematic representation of all Ty-tagged constructs generated and used in this study. The red boxes indicate the putative palmitoylated cysteine residues. B) *T. gondii* HSP20 is palmitoylated on all of its cysteine residues. Stable cell-lines over-expressing the different Ty-tagged constructs were metabolically labeled with [³H]-palmitic acid followed by anti-Ty immunoprecipitation. Then, the samples were divided in three and run on SDS-PAGE: one sample was used for Western blot analysis as a loading control. The two remaining samples were used to detect if the radiolabel was incorporated to the protein. C) Palmitoylation of cysteines 3 and 4 is important to confer IMC localization. Intracellular tachyzoites overexpressing the different Ty-tagged constructs were fixed and the localization of the constructs was determined by indirect immunofluorescence assays. Differential interference contrast (DIC) microscopy is shown on the right. White arrowheads indicate a TgHSP20-positive unidentified structure. Scale bars = 5 μm.

3.3. TgHSP20 is palmitoylated in all its cysteine residues

In order to determine which residue/s is/are palmitoylated, different additional copies of HSP20 in which each putative palmitoylated cysteine residue (C3, C4 and C160) were changed to serines as indicated in the scheme depicted in Fig. 2A. These mutated genes were cloned into a *Toxoplasma* expression vector containing a Ty-tag and expressed in tachyzoites. These tachyzoites were metabolically labeled with [³H]-palmitic acid followed by immunoprecipitation with an anti-Ty antibody. Western blot analyses of the immunoprecipitated proteins are shown in Fig. 2B. The endogenous TgHSP20 was visualized as a single band in Western blots using anti-TgHSP20 antibody (Figs. 1A and S2). However, some of the Ty-constructs appeared as a doublet when using the anti-Ty antibody (Figs. 2B and S2) in which the lower band co-migrates with the endogenous TgHSP20 (Fig. 2). Mass spectrometry analysis of these bands confirmed that both bands corresponded to TgHSP20 (data not shown). These two bands may correspond to different post-translational modifications or structural differences of the protein. Nevertheless, more studies are required to elucidate the nature of the observed doublet of the TgHSP20-Ty constructs. The expression of all constructs produced proteins with some level of palmitoylation, with the exception of TgHSP20_{C3,4,160S}-Ty (Fig. 2B, lower panel). This result shows that TgHSP20 is palmitoylated on all of its cysteine residues. Furthermore, neutral hydroxylamine treatment removed the radiolabel from all the constructs, demonstrating that the lipid attachment was due to a labile thioester bond (Fig. 2B).

3.4. N-terminal palmitoylation determines TgHSP20 localization

In order to establish the role of palmitoylation of each cysteine residue on the localization of TgHSP20, we analyzed the sub-cellular localization of the different Ty-tagged TgHSP20s. Fig. 2C shows that the TgHSP20_{FL}-Ty construct localized to the IMC, as previously reported for the endogenous TgHSP20 [28]. Interestingly, stable lines expressing TgHSP20_{C3S}-Ty and TgHSP20_{C4S}-Ty mutants also showed a faint IMC localization and a strong signal in an unidentified structure (Fig. 2C, arrowheads). This structure was also observed when tachyzoites were treated with 2-BP (Fig. 1C, arrowhead). Of note, this unidentified structure did not react against IMC3 or SAG1 by indirect immunofluorescence (data not shown). TgHSP20_{C3,4S}-Ty localized to the cytosol and displayed a very intense signal in the unidentified structure

(indicated with an arrowhead). The non-palmitoylable form of TgHSP20 (TgHSP20_{C3,4,160S}-Ty) displayed a cytosolic localization without the presence of the unidentified structure. Localization of TgHSP20_{C160S}-Ty is similar to that of full length TgHSP20 (Fig. 2C).

In order to study the nature of the TgHSP20-positive unidentified structure observed in some mutant lines, a transmission electron microscopy analysis was performed with tachyzoites stably expressing TgHSP20_{C3,4S}-Ty. The image suggests the presence of some accumulation of membranes within the parasite (Fig. 3; [38]).

3.5. Palmitoylation is not required for localization of TgHSP20 in the IMC of daughter cells

Apicomplexan parasites divide by internal budding into a variable number of daughter cells. *T. gondii* divides by the simplest mode in the phylum, endodyogeny, and assembles two daughter cells every round of replication. Prior to cytokinesis, daughter cells are dotted with a fully formed pellicle, which includes the IMC [39]. In order to determine how palmitoylation modulates TgHSP20 targeting to the IMC of daughter cells, intracellular replicating parasites were treated with 2-BP and analyzed by indirect immunofluorescence microscopy with anti-HSP20 antibodies. Interestingly, palmitoylation seems not to play a role on TgHSP20 attachment to the IMC of daughter cells (Fig. 4A). To confirm this result, stable lines expressing different palmitoylable versions of TgHSP20 were analyzed for their sub-cellular localization in replicating parasites. All the mutant lines lysed the infected monolayer at a similar time than the parental cell-line, not showing any evident phenotype associated to parasite growth (data not shown). All the Ty-tagged TgHSP20s localized to the IMC of daughter cells regardless of the cysteine that was modified (Fig. 4B). This indicates that the initial attachment of TgHSP20 to the IMC of daughter cells is a process independent of palmitoylation. Furthermore, the stable line expressing a non-palmitoylable form of TgHSP20 (TgHSP20_{C3,4,160S}-Ty) localized to the IMC of daughter cells but to the cytosol of mature parasites. As such, we decided to investigate at which point of the endodyogeny process TgHSP20_{C3,4,160S}-Ty changed its localization. Fig. 5 shows that TgHSP20_{C3,4,160S}-Ty localizes to the IMC of daughter cells until late endodyogeny and moves to the cytosol only when parasites are mature. As such, palmitoylation seems to be required to retain TgHSP20 at the mother IMC in intracellular parasites.

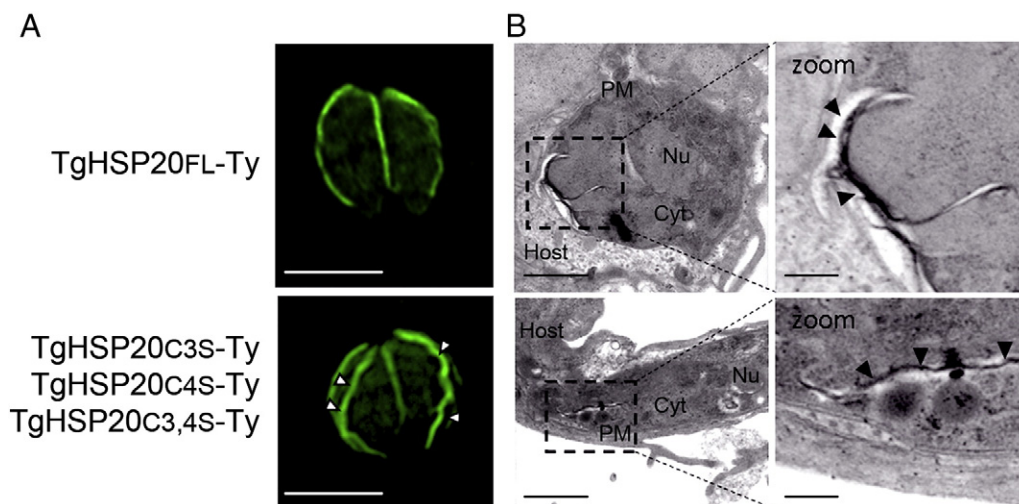


Fig. 3. Transmission electron microscopy of the TgHSP20_{C3,4S}-Ty construct suggests the presence membrane accumulation. Lack or partial palmitoylation at the N-terminal of TgHSP20 forms an unidentified structure. A) Immunofluorescence assay showing the sub-cellular localization of full-length TgHSP20-Ty (TgHSP20_{FL}-Ty; upper panel) or parasites over-expressing different N-terminal palmitoylable TgHSP20 constructs (same result either with TgHSP20_{C3S}-Ty, TgHSP20_{C4S}-Ty or TgHSP20_{C3,4S}-Ty; lower panel). Scale bars = 5 μm. B) Transmission electron microscopy of the parasites observed in panel A. The white arrowheads show the atypical localization of TgHSP20 with indirect immunofluorescence and black arrowheads in the electron microscopy analysis. PM: plasma membrane; Nu: nucleus; Cyt: cytoplasm. Scale bars = 1 μm and 200 nm for the zoomed images.

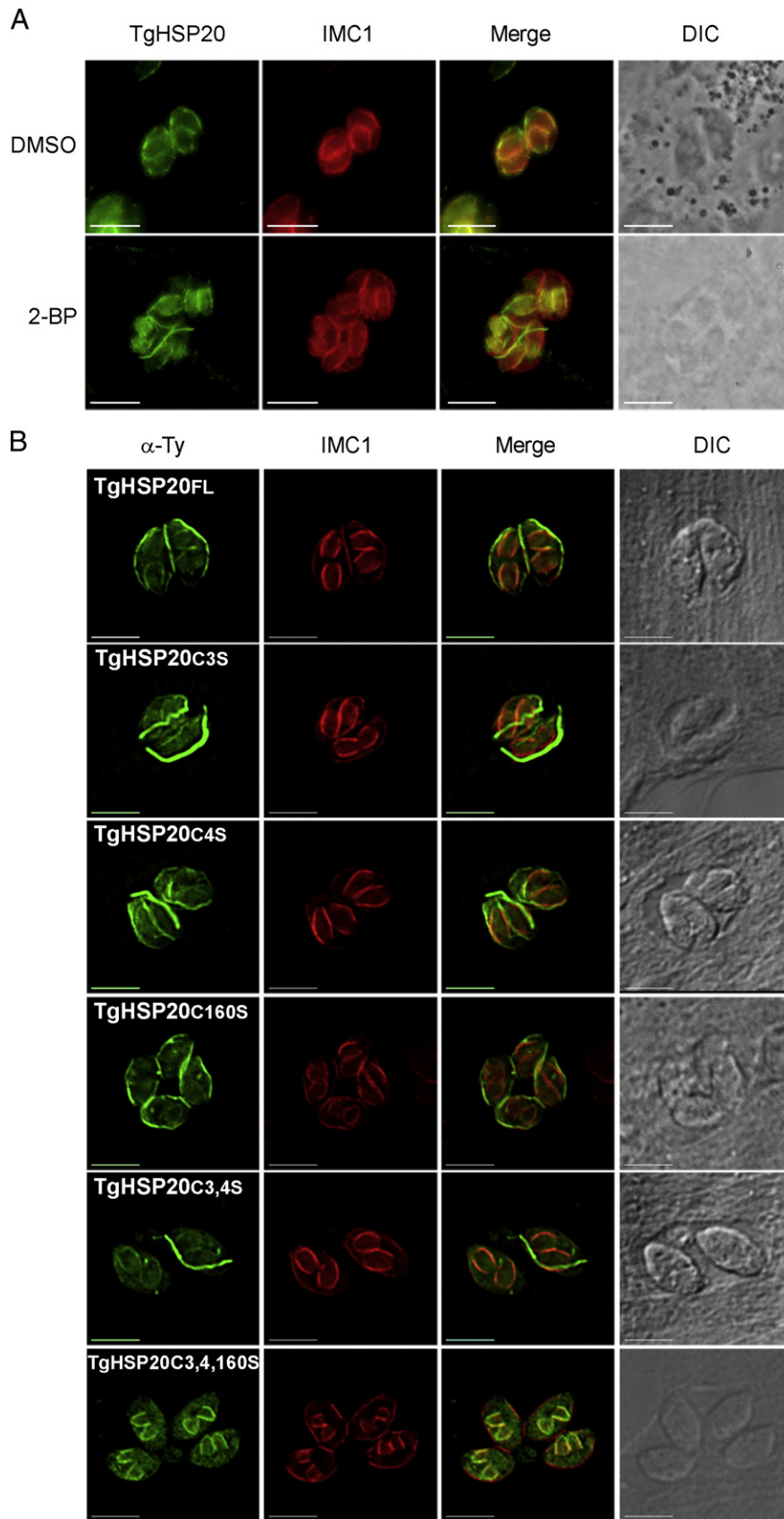


Fig. 4. Palmitoylation is not required for TgHSP20 attachment to the IMC of daughter cells. A) TgHSP20 localization at the daughter IMC is not affected by 2-BP treatment. Replicating parasites were treated with 2-BP (100 μ M) or DMSO for 16–18 h, then fixed and TgHSP20 localization was assessed by indirect immunofluorescence microscopy. Differential interference contrast (DIC) images are shown in the right panels. Scale bars = 5 μ m. B) IMC localization at the daughter cell is maintained regardless of the TgHSP20 palmitoylation status. Intracellular replicating parasites overexpressing different Ty-tagged constructs were fixed and TgHSP20 localization was assessed by indirect immunofluorescence microscopy. DIC pictures are in the right panels. The anti-IMC1 antibody labels the IMC from both the mother and daughter cells. Scale bars = 5 μ m.

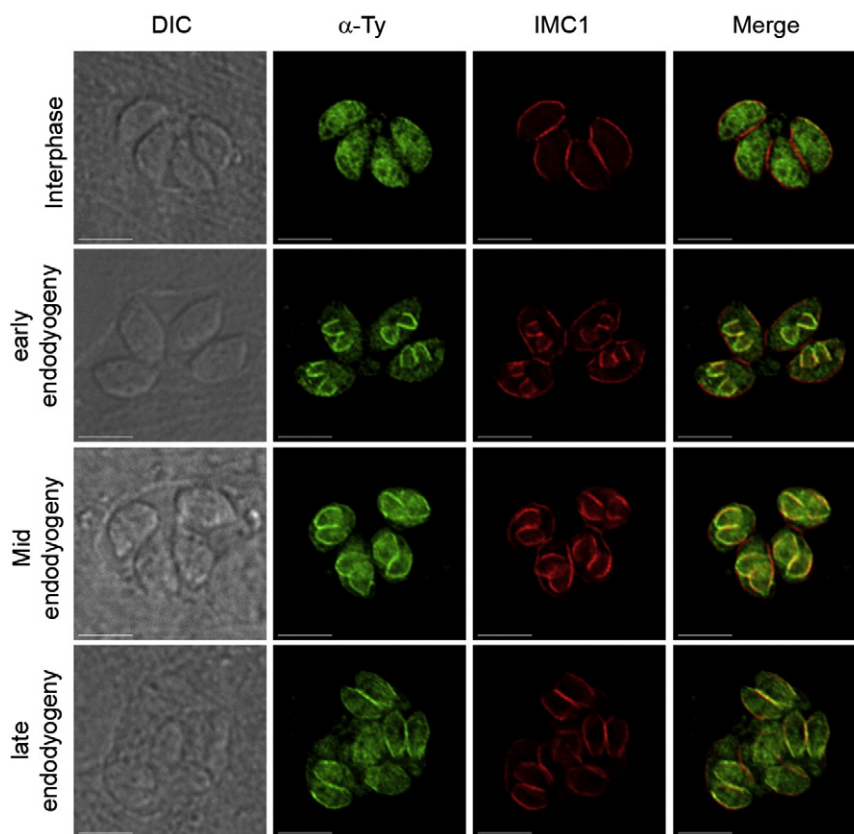


Fig. 5. TgHSP20 interacts with IMC throughout endodyogeny in a palmitoylation-independent manner. The non-palmitoylable TgHSP20_{C3,4,160S}-Ty construct is able to interact with the daughter IMC until the late steps of endodyogeny. Samples of replicating parasites overexpressing the TgHSP20_{C3,4,160S}-Ty construct were obtained at different stages of the endodyogeny process and the Ty localization was assessed by indirect immunofluorescence assays. DIC pictures are in the right panels. Scale bars: 5 μ m.

4. Discussion

Our data shows that TgHSP20 is synthesized as a mature protein in the cytosol and that its initial localization to the parasite IMC is independent of palmitoylation, but this PTM of TgHSP20 is required to maintain such localization in the mature parasite. Interestingly, these results indicate that a differential regulation of IMC protein targeting may occur in daughter and mature parasites. Although palmitoylation of *T. gondii* proteins has been predicted for numerous proteins, mainly for proteins localized to the IMC, there are little experimental evidences of such modification. One interesting finding of this investigation is that TgHSP20 is palmitoylated at the three cysteines present in its amino acid sequence. Up to date, the Apicomplexa phylum presents two IMC proteins where their palmitoylation status determines their localization to the pellicle [19,22,40]. The glideosome association protein GAP 45 localizes at the space between the plasma membrane and the IMC and is part of the motor complex of this parasite. However, this protein does not localize to the IMC of daughter cells and it seems to be associated to the plasma membrane from where it interacts with the IMC of mature parasites [41]. The *T. gondii* enzyme hypoxanthine-xanthine-guanine phosphoribosyltransferase (HXGPRT) presents two isoforms [40]. Whereas the HXGPRT-I localizes to the cytosol, the isoform-II presents an extension at the N-terminal region, which is palmitoylated and that determines its IMC localization [40]. Other interesting examples of *T. gondii* proteins that localize to the IMC are the IMC Sub-compartment Proteins (ISP1/2/3/4) [42] and the calcium-dependent protein kinase 3 (TgCDPK3) [24,25]. ISPs 1–3 and TgCDPK3 present predicted myristoylation and palmitoylation sites at the N-terminal region [24,25,42], whereas ISP4 presents two predicted palmitoylation sites [23]. Mutation of the predicted N-terminal acylation sites delocalizes the proteins from the pellicle to the cytosol [23–25,42]. However, the palmitoylation status of all these proteins remains to be demonstrated

biochemically. In addition, *T. gondii* presents several IMC-associated proteins predicted to be palmitoylated such as IMCs 1, 4, 6, 11, 12, 13, 14, 15, MCL1 and PKG1 [15,22,43]. Taken together, it seems that palmitoylation of at least a subset of IMC-associated proteins could be important to retain these proteins in this compartment, being TgHSP20 an example of them.

Analysis of the dynamics of the incorporation of TgHSP20 into the IMC shows some interesting traits. We found that HSP20 was targeted to the IMC at an intermediate stage of budding. Once at the IMC, TgHSP20 is retained in this sub-compartment until the late steps of parasite replication, apparently without requirement for palmitoylation as observed for the non-palmitoylable form of TgHSP20 (TgHSP20_{C3,4,160S}-Ty). We expected to observe contact between TgHSP20 and the IMC because all palmitoyl acyl-transferases (PATs) are transmembrane proteins [44]. In fact, data mining of the *T. gondii* database (www.toxodb.org) reveals that putative TgPATs contain a signal peptide and several transmembrane domains [22]. However, in mature tachyzoites, after cytokinesis, the presence of TgHSP20 at the IMC requires at least cysteine 3 or 4 to be palmitoylated. Similarly, in higher eukaryotes a well characterized example of protein palmitoylation-dependent sorting is the H- and N-Ras. After translation, these proteins are farnesylated allowing them to associate with ER and Golgi membranes [45]. This single lipidation step produces a transient and weak attachment to the membrane, in this case with the ER. Subsequent palmitoylation steps generate the trapping necessary to keep the stable membrane association, particularly at the PM and Golgi. Palmitoylation and de-palmitoylation of Ras regulate diffusional exchange between the cytosol and endo-membranes [46,47]. In a similar manner, our data suggest that TgHSP20 palmitoylation at cysteines 3 and 4 traps the chaperone at the IMC.

The fact that TgHSP20 is targeted to the IMC without being palmitoylated indicates that it could have an interacting molecule.

Although these parasites express the endogenous TgHSP20 and the mutants versions could tag along with its localization, similar results were obtained when TgHSP20_{C3,4,160S}-Ty was expressed in a TgHSP20-knock out parasite (Fig. 3). Up to now, we were unable to detect any protein partner either as interactor and/or substrate [28] but one of them could be the specific PAT that palmitoylates TgHSP20, a speculation that needs to be further explored. Another possibility is that TgHSP20 binds IMC lipids as it has been shown for the recombinant TgHSP20 [28]. This intrinsic property could account for the initial binding of TgHSP20 to the IMC of nascent cells, whereas palmitoylation, as mentioned above, is required to maintain the IMC localization in mature intracellular parasites. In this case, a change in membrane composition or fluidity at the final steps of parasite replication [48,49] could account for the generation of an unstable environment for non-palmitoylated TgHSP20. In fact, the mature IMC present a different topology along the parasite with palmitoylated proteins located at three different regions [42]. This suggests that once TgHSP20 is at the IMC, palmitoylation could confer properties to stably interact or bind with specific regions along this sub-compartment. Actually, TgHSP20 presents a distribution in short stripes from the basal to the polar region of the parasite. It is interesting to note that *hsp20* expression at the mRNA level is clearly associated to cell cycle, peaking at the mitosis phase (Fig. 4), as described by other IMC proteins and suggesting that it occurs because they accompany the building of the new daughter cell [50]. This is in agreement with the possibility that TgHSP20 matures together with the IMC during parasite replication. Further studies would be necessary to address this point.

After treatment of tachyzoites with 2-BP, TgHSP20 showed a localization similar to that observed for the TgHSP20_{C3,4S}-Ty, demonstrating that palmitoylation on cysteine 160 does not play a role in TgHSP20 trapping at the IMC. Considering that cysteine 160 is conserved, the role of its palmitoylation remains to be elucidated. On the other hand, lack of palmitoylation at cysteine 160 (TgHSP20_{C160S}-Ty) did not produce the TgHSP20-positive unidentified structure, suggesting that this structure depends on palmitoylation at this residue. We speculate that this structure may contain misfolded products of TgHSP20. Interestingly, this structure seems to contain membrane structures that are reminiscent of the membranous myelin fibers observed when the apicoplast biogenesis was disturbed [38]. The significance of this finding needs to be further studied. The fact that TgHSP20_{C3,4,160S}-Ty did not produce any unusual structure supports our hypothesis of the idea of a previous requirement of TgHSP20 association to the IMC to generate such structure. Even though the role of cysteine 160 is unclear, palmitoylation at this site may stabilize the anomalous attachment of TgHSP20 to the IMC. Of note, these unidentified structures are not naturally observed in the parasite.

In conclusion, we observed that the *T. gondii* IMC protein HSP20 is palmitoylated at three sites and that these palmitoylated sites have different roles at least in the targeting of the chaperone to the IMC. We also observed that TgHSP20 is translated in the cytosol and does not require rapid palmitoylation to bind to the nascent IMC. However, a fine modulation of protein localization can occur at later steps of parasite replication, including palmitoylation as one of such process.

Supplementary data to this article can be found online at <http://dx.doi.org/10.1016/j.bbamcr.2013.02.022>.

Acknowledgements

We would like to thank Maria E. Francia and Beth Richardson for technical assistance with EM and the Plant Biology Electron Microscopy Facility at the University of Georgia. This work was supported by: ANPCyT grant BID 1728 OC-AR PICT 2010-1494 (MMC), a PIP grant 2010-0190 (MMC) and a National Institutes of Health–National Institute of Allergy and Infectious Diseases (NIH–NIAID) grant AI083162 (to SOA and MMC). NDM, MMC and SOA are researchers from the National Council of Research (CONICET) and UNSAM. MGDN is a PhD fellow from CONICET and was supported in part by a Fogarty

International Center Training Grant (NIH D43TW007888). Work in SNJM laboratory was supported by NIH grant AI096836.

References

- J.B. McCabe, L.G. Berthiaume, Functional roles for fatty acylated amino-terminal domains in subcellular localization, *Mol. Biol. Cell* 10 (1999) 3771–3786.
- J.B. McCabe, L.G. Berthiaume, N-terminal protein acylation confers localization to cholesterol, sphingolipid-enriched membranes but not to lipid rafts/caveolae, *Mol. Biol. Cell* 12 (2001) 3601–3617.
- L. Berthiaume, I. Deichaite, S. Peseckis, M.D. Resh, Regulation of enzymatic activity by active site fatty acylation. A new role for long chain fatty acid acylation of proteins, *J. Biol. Chem.* 269 (1994) 6498–6505.
- M.M. Corvi, C.L. Soltys, L.G. Berthiaume, Regulation of mitochondrial carbamoyl-phosphate synthetase 1 activity by active site fatty acylation, *J. Biol. Chem.* 276 (2001) 45704–45712.
- I. Deichaite, L.P. Casson, H.P. Ling, M.D. Resh, In vitro synthesis of pp 60v-src: myristoylation in a cell-free system, *Mol. Cell. Biol.* 8 (1988) 4295–4301.
- C. Wilcox, J.S. Hu, E.N. Olson, Acylation of proteins with myristic acid occurs cotranslationally, *Science* 238 (1987) 1275–1278.
- T. Utsumi, Analysis of co- and post-translational modifications of proteins by in vitro and in vivo metabolic labeling, *Seikagaku* 75 (2003) 373–378.
- S.M. Warden, C. Richardson, J. O'Donnell Jr., D. Stapleton, B.E. Kemp, L.A. Witters, Post-translational modifications of the beta-1 subunit of AMP-activated protein kinase affect enzyme activity and cellular localization, *Biochem. J.* 354 (2001) 275–283.
- D.D. Martin, G.L. Vilas, J.A. Prescher, G. Rajaiiah, J.R. Falck, C.R. Bertozzi, L.G. Berthiaume, Rapid detection, discovery, and identification of post-translationally myristoylated proteins during apoptosis using a bio-orthogonal azidomyristate analog, *FASEB J.* 22 (2008) 797–806.
- G.L. Vilas, M.M. Corvi, G.J. Plummer, A.M. Seime, G.R. Lambkin, L.G. Berthiaume, Posttranslational myristoylation of caspase-activated p21-activated protein kinase 2 (PAK2) potentiates late apoptotic events, *Proc. Natl. Acad. Sci. U. S. A.* 103 (2006) 6542–6547.
- M. Fukata, Y. Fukata, H. Adesnik, R.A. Nicoll, D.S. Bredt, Identification of PSD-95 palmitoylating enzymes, *Neuron* 44 (2004) 987–996.
- M.E. Linder, R.J. Deschenes, New insights into the mechanisms of protein palmitoylation, *Biochemistry* 42 (2003) 4311–4320.
- J.A. Duncan, A.G. Gilman, A cytoplasmic acyl-protein thioesterase that removes palmitate from G protein alpha subunits and p21(RAS), *J. Biol. Chem.* 273 (1998) 15830–15837.
- M.C. Bano, C.S. Jackson, A.I. Magee, Pseudo-enzymatic S-acylation of a myristoylated yes protein tyrosine kinase peptide in vitro may reflect non-enzymatic S-acylation in vivo, *Biochem. J.* 330 (Pt 2) (1998) 723–731.
- R.G. Donald, P.A. Liberator, Molecular characterization of a coccidian parasite cGMP dependent protein kinase, *Mol. Biochem. Parasitol.* 120 (2002) 165–175.
- N. Kato, T. Sakata, G. Breton, K.G. Le Roch, A. Nagle, C. Andersen, B. Bursulaya, K. Henson, J. Johnson, K.A. Kumar, F. Marr, D. Mason, C. McNamara, D. Plouffe, V. Ramachandran, M. Spooner, T. Tuntland, Y. Zhou, E.C. Peters, A. Chatterjee, P.G. Schultz, G.E. Ward, N. Gray, J. Harper, E.A. Winzeler, Gene expression signatures and small-molecule compounds link a protein kinase to *Plasmodium falciparum* motility, *Nat. Chem. Biol.* 4 (2008) 347–356.
- C. Moskes, P.A. Burghaus, B. Wernli, U. Sauder, M. Durrenberger, B. Kappes, Export of *Plasmodium falciparum* calcium-dependent protein kinase 1 to the parasitophorous vacuole is dependent on three N-terminal membrane anchor motifs, *Mol. Microbiol.* 54 (2004) 676–691.
- I. Russo, A. Oksman, D.E. Goldberg, Fatty acid acylation regulates trafficking of the unusual *Plasmodium falciparum* calpain to the nucleolus, *Mol. Microbiol.* 72 (2009) 229–245.
- R.R. Rees-Channer, S.R. Martin, J.L. Green, P.W. Bowyer, M. Grainger, J.E. Molloy, A.A. Holder, Dual acylation of the 45 kDa gliding-associated protein (GAP45) in *Plasmodium falciparum* merozoites, *Mol. Biochem. Parasitol.* 149 (2006) 113–116.
- A.M. Alonso, V.M. Coceres, M.G. De Napoli, A.F. Nieto Guil, S.O. Angel, M.M. Corvi, Protein palmitoylation inhibition by 2-bromopalmitate alters gliding, host cell invasion and parasite morphology in *Toxoplasma gondii*, *Mol. Biochem. Parasitol.* 184 (2012) 39–43.
- S.D. Gilk, E. Gaskins, G.E. Ward, C.J. Beckers, GAP45 phosphorylation controls assembly of the *Toxoplasma* myosin XIV complex, *Eukaryot. Cell* 8 (2009) 190–196.
- M.M. Corvi, L.G. Berthiaume, M.G. Napoli, Protein palmitoylation in protozoan parasites, *Front. Biosci. (Schol. Ed.)* 3 (2011) 1067–1079.
- C. Fung, J.R. Beck, S.D. Robertson, M.J. Gubbels, P.J. Bradley, *Toxoplasma* ISP4 is a central IMC sub-compartment protein whose localization depends on palmitoylation but not myristoylation, *Mol. Biochem. Parasitol.* 184 (2012) 99–108.
- J.M. McCoy, L. Whitehead, G.G. van Dooren, C.J. Tonkin, TgCDPK3 regulates calcium-dependent egress of *Toxoplasma gondii* from host cells, *PLoS Pathog.* 8 (2012) e1003066.
- E. Garrison, M. Trecek, E. Ehret, H. Butz, T. Garbuz, B.P. Oswald, M. Settles, J. Boothroyd, G. Arrizabalaga, A forward genetic screen reveals that calcium-dependent protein kinase 3 regulates egress in *Toxoplasma*, *PLoS Pathog.* 8 (2012) e1003049.
- C. Opitz, D. Soldati, 'The gliideosome': a dynamic complex powering gliding motion and host cell invasion by *Toxoplasma gondii*, *Mol. Microbiol.* 45 (2002) 597–604.
- M.L. Jones, M.O. Collins, D. Goulding, J.S. Choudhary, J.C. Rayner, Analysis of protein palmitoylation reveals a pervasive role in *Plasmodium* development and pathogenesis, *Cell Host Microbe* 12 (2012) 246–258.

- [28] N. de Miguel, M. Lebrun, A. Heaslip, K. Hu, C.J. Beckers, M. Matrajt, J.F. Dubremetz, S.O. Angel, *Toxoplasma gondii* Hsp20 is a stripe-arranged chaperone-like protein associated with the outer leaflet of the inner membrane complex, *Biol. Cell* 100 (2008) 479–489.
- [29] N. de Miguel, N. Braun, A. Bepperling, T. Kriehuber, A. Kastenmuller, J. Buchner, S.O. Angel, M. Haslbeck, Structural and functional diversity in the family of small heat shock proteins from the parasite *Toxoplasma gondii*, *Biochim. Biophys. Acta* 1793 (2009) 1738–1748.
- [30] E. Precigout, A. Valentin, B. Carcy, A. Gorenflot, K. Nakamura, M. Aikawa, J. Schrevel, *Babesia divergens*: characterization of a 17-kDa merozoite membrane protein, *Exp. Parasitol.* 77 (1993) 425–434.
- [31] V.M. Coceres, A.M. Alonso, M.L. Alomar, M.M. Corvi, Rabbit antibodies against *Toxoplasma gondii* Hsp20 are able to reduce parasite invasion and gliding motility in *Toxoplasma gondii* and parasite invasion in *Neospora caninum*, *Exp. Parasitol.* 132 (2012) 274–281.
- [32] G.N. Montagna, C.A. Buscaglia, S. Munter, C. Goosmann, F. Frischknecht, V. Brinkmann, K. Matuschewski, Critical role for heat shock protein 20 (HSP20) in migration of malarial sporozoites, *J. Biol. Chem.* 287 (2012) 2410–2422.
- [33] G.N. Montagna, K. Matuschewski, C.A. Buscaglia, Small heat shock proteins in cellular adhesion and migration: evidence from *Plasmodium* genetics, *Cell Adh. Migr.* 6 (2012) 78–84.
- [34] E. Montero, M. Rodriguez, L.M. Gonzalez, C.A. Lobo, *Babesia divergens*: identification and characterization of BdHSP-20, a small heat shock protein, *Exp. Parasitol.* 119 (2008) 238–245.
- [35] R.G. Donald, D. Carter, B. Ullman, D.S. Roos, Insertional tagging, cloning, and expression of the *Toxoplasma gondii* hypoxanthine–xanthine–guanine phosphoribosyltransferase gene. Use as a selectable marker for stable transformation, *J. Biol. Chem.* 271 (1996) 14010–14019.
- [36] O. Ceredo, J.F. Dubremetz, M. Soete, D. Deslee, H. Vial, D. Bout, M. Lebrun, Synergistic role of micronemal proteins in *Toxoplasma gondii* virulence, *J. Exp. Med.* 201 (2005) 453–463.
- [37] M.D. Resh, Use of analogs and inhibitors to study the functional significance of protein palmitoylation, *Methods* 40 (2006) 191–197.
- [38] L. Tawk, J.F. Dubremetz, P. Montcourrier, G. Chicanne, F. Merezegue, V. Richard, B. Payrastré, M. Meissner, H.J. Vial, C. Roy, K. Wengelnik, M. Lebrun, Phosphatidylinositol 3-monophosphate is involved in toxoplasma apicoplast biogenesis, *PLoS Pathog.* 7 (2011) e1001286.
- [39] B. Striepen, C.N. Jordan, S. Reiff, G.G. van Dooren, Building the perfect parasite: cell division in apicomplexa, *PLoS Pathog.* 3 (2007) e78.
- [40] K. Chaudhary, R.G. Donald, M. Nishi, D. Carter, B. Ullman, D.S. Roos, Differential localization of alternatively spliced hypoxanthine–xanthine–guanine phosphoribosyltransferase isoforms in *Toxoplasma gondii*, *J. Biol. Chem.* 280 (2005) 22053–22059.
- [41] K. Frenal, V. Polonais, J.B. Marq, R. Stratmann, J. Limenitakis, D. Soldati-Favre, Functional dissection of the apicomplexan gliedosome molecular architecture, *Cell Host Microbe* 8 (2010) 343–357.
- [42] J.R. Beck, I.A. Rodriguez-Fernandez, J. Cruz de Leon, M.H. Huynh, V.B. Carruthers, N.S. Morrisette, P.J. Bradley, A novel family of *Toxoplasma* IMC proteins displays a hierarchical organization and functions in coordinating parasite division, *PLoS Pathog.* 6 (2010).
- [43] B.R. Anderson-White, F.D. Ivey, K. Cheng, T. Szatanek, A. Lorestani, C.J. Beckers, D.J. Ferguson, N. Sahoo, M.J. Gubbels, A family of intermediate filament-like proteins is sequentially assembled into the cytoskeleton of *Toxoplasma gondii*, *Cell. Microbiol.* 13 (2011) 18–31.
- [44] D.A. Mitchell, A. Vasudevan, M.E. Linder, R.J. Deschenes, Protein palmitoylation by a family of DHHC protein S-acyltransferases, *J. Lipid Res.* 47 (2006) 1118–1127.
- [45] E. Choy, V.K. Chiu, J. Silletti, M. Feoktistov, T. Morimoto, D. Michaelson, I.E. Ivanov, M.R. Philips, Endomembrane trafficking of ras: the CAAX motif targets proteins to the ER and Golgi, *Cell* 98 (1999) 69–80.
- [46] J.S. Goodwin, K.R. Drake, C. Rogers, L. Wright, J. Lippincott-Schwartz, M.R. Philips, A.K. Kenworthy, Depalmitoylated Ras traffics to and from the Golgi complex via a nonvesicular pathway, *J. Cell Biol.* 170 (2005) 261–272.
- [47] O. Rocks, A. Peyker, M. Kahms, P.J. Verwee, C. Koerner, M. Lumbierres, J. Kuhlmann, H. Waldmann, A. Wittinghofer, P.I. Bastiaens, An acylation cycle regulates localization and activity of palmitoylated Ras isoforms, *Science* 307 (2005) 1746–1752.
- [48] K. Hu, T. Mann, B. Striepen, C.J. Beckers, D.S. Roos, J.M. Murray, Daughter cell assembly in the protozoan parasite *Toxoplasma gondii*, *Mol. Biol. Cell* 13 (2002) 593–606.
- [49] T. Mann, E. Gaskins, C. Beckers, Proteolytic processing of TgIMC1 during maturation of the membrane skeleton of *Toxoplasma gondii*, *J. Biol. Chem.* 277 (2002) 41240–41246.
- [50] M.S. Behnke, J.C. Wootton, M.M. Lehmann, J.B. Radke, O. Lucas, J. Nawas, L.D. Sibley, M.W. White, Coordinated progression through two subtranscriptomes underlies the tachyzoite cycle of *Toxoplasma gondii*, *PLoS One* 5 (2010) e12354.
- [51] M.J. Wichroski, J.A. Melton, C.G. Donahue, R.K. Tweten, G.E. Ward, Clostridium septicum alpha-toxin is active against the parasitic protozoan *Toxoplasma gondii* and targets members of the SAG family of glycosylphosphatidylinositol-anchored surface proteins, *Infect. Immun.* 70 (2002) 4353–4361.
- [52] S. Besteiro, A. Michelin, J. Poncet, J.F. Dubremetz, M. Lebrun, Export of a *Toxoplasma gondii* rhoptry neck protein complex at the host cell membrane to form the moving junction during invasion, *PLoS Pathog.* 5 (2009) e1000309.
- [53] B. Gajria, A. Bahl, J. Brestelli, J. Dommer, S. Fischer, X. Gao, M. Heiges, J. Iodice, J.C. Kissinger, A.J. Mackey, D.F. Pinney, D.S. Roos, C.J. Stoeckert Jr., H. Wang, B.P. Brunk, ToxoDB: an integrated *Toxoplasma gondii* database resource, *Nucleic Acids Res.* 36 (2008) D553–D556.
- [54] J.R. Radke, M.W. White, Expression of herpes simplex virus thymidine kinase in *Toxoplasma gondii* attenuates tachyzoite virulence in mice, *Infect. Immun.* 67 (1999) 5292–5297.