

MARTIN KELLEHER

PROPERTY LTD.

PSR NO. 004347



For Sale – Garranes, Ballineen, Co. Cork P47 VF67

Main Points:

Completely rebuilt 20 years ago
Spacious residence with superb views over the surrounding countryside
10km from Clonakilty, 7km Ballineen/Enniskeane, 4km from Knockskeagh N. School, 3 km from Lyre
c. 1800 Sqft, 4 bedroom house very bright due to its elevated outlook
c. 0.25 acres lovely level lawn, patio & parking area.

Offers over € 300,000

Faxbridge Roundabout, Clonakilty, West Cork

023 8859111 | info@martinkelleher.ie | martinkelleher.ie

CRO No. 684543



ipav
Institute of Professional
Auctioneers & Valuers

Completely rebuilt 20 years ago this is a spacious residence with superb views over the surrounding countryside. The property is situated 10km from Clonakilty, 7km Enniskeane, 4km from Knockskeagh National School, 3 km Lyre and 55 minutes from Cork city. Extending to c. 1800 Sqft this 4 bedroom house has some lovely features including timber panelling, handcrafted staircase, antique fireplace, exposed stone detailing inside and out and is very bright due to its elevated outlook. Extending to c. 0.25 acres there is a lovely level lawn, patio and parking area to the rear of the house. There is excellent potential within the house for home working with its broadband connectivity and office plus garage/store room.



Accommodation c. 167.34 m²/ 1800 ft²

Entrance Porch 2 m x 1.9 m

Bright entrance porch with triple aspect windows, south, east and west.

Entrance Hall 3.7 m x 3.2 m

With stone floor, access to stairs and doors to sitting room and kitchen.

Sitting Room 3.5 m x 5.8 m

Spacious sitting room with windows north and south. Open fireplace with timber surround and attractive timber panelling throughout this room.

Office 3.3 m x 2 m

Useful office or study located off the garage.

Kitchen/Dining Room 3.8 m x 5.8 m

With windows north and French doors out to the patio this is a bright room that also interconnects to the sunroom. Tiled floor, recessed lighting and stove. There is a fitted kitchen with breakfast bar.

Utility Room 3.7 m x 2.5 m

Large utility room with door to rear yard. Tiled floor, shelving and plumbed for washing/drying.

Downstairs Toilet 2.4 m x 1 m

Tiled floor, WC and wash hand basin.

Sunroom 1.6 m x 5.8 m

With attractive timber floor and stone wall detail. Very bright with aspects on 3 sides north, south and west.

Stairs to the spacious first floor landing. Airing closet/hot press here.

Bedroom One 3.8 m x 3.3 m

Bright double bedroom with windows south and west that have fantastic views. Timber floor.

Bedroom Two 3.8 m x 2 m

Double bedroom with timber floor.

Bathroom 3.6 m x 2 m / 1 m

Fully tiled, bath, WC, wash hand basin and separate shower.

Bedroom Three 3.5 m x 2.8 m / 2 m

Double bedroom with timber floor.

Bedroom Four 3.5 m x 2.9 m / 2.2 m

Double bedroom with timber floor and fantastic countryside views south.

Garage 3.3 m x 3.9 m

Spacious garage with access from the office or pedestrian door to rear yard.

Services

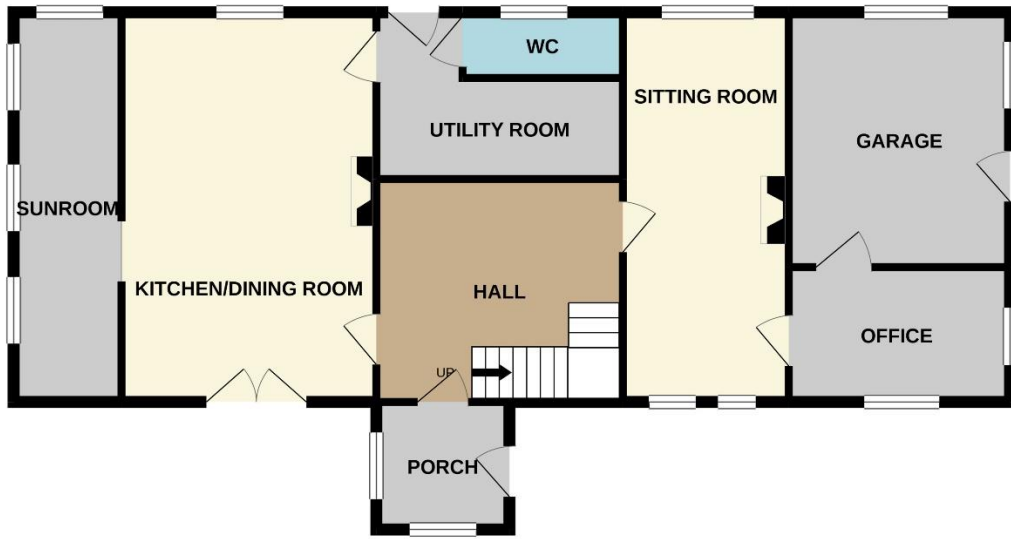
The property is connected to telephone, electricity and has broadband access (presently Rapid Broadband). Bio cycle septic tank and private well water via deep bore well.

Outside

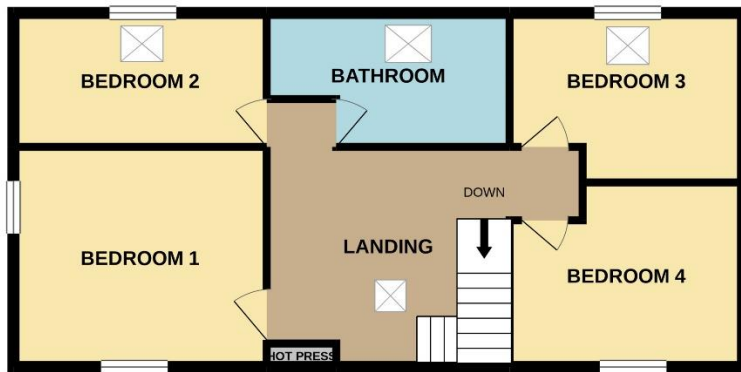
Standing on c. 0.25 acres the property has plenty of car parking to the rear of the house. To the front of the house is a raised lawn which has a patio outside the kitchen dining room. There are fabulous countryside views from this elevated position.



GROUND FLOOR



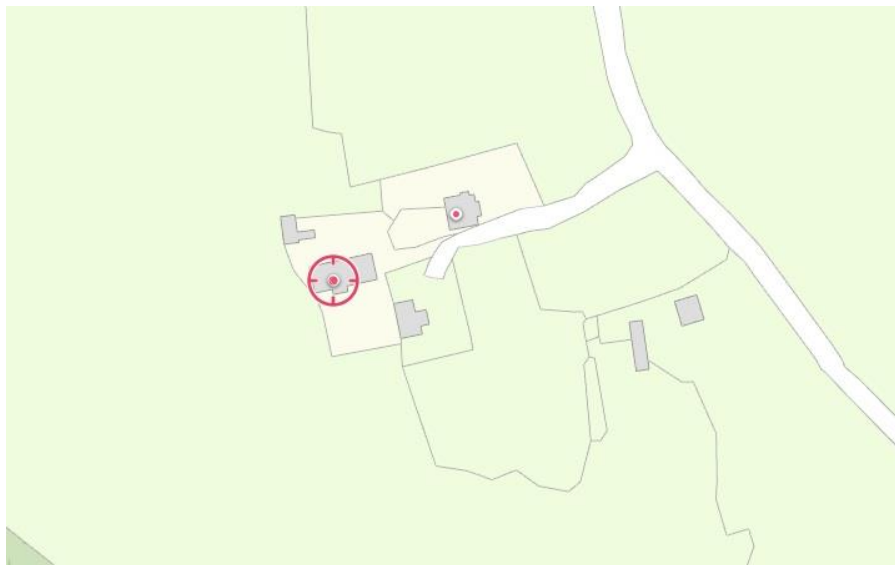
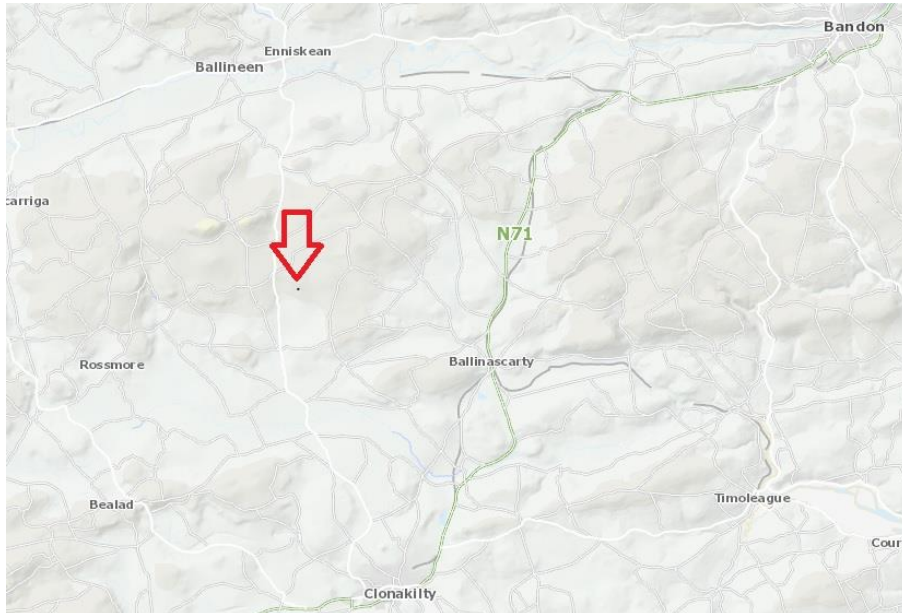
1ST FLOOR



Whilst every attempt has been made to ensure the accuracy of the floorplan contained here, measurements of doors, windows, rooms and any other items are approximate and no responsibility is taken for any error, omission or mis-statement. This plan is for illustrative purposes only and should be used as such by any prospective purchaser. The services, systems and appliances shown have not been tested and no guarantee as to their operability or efficiency can be given.
Made with Metropix ©2021

Directions

Type Eircode P47 VF67 into smart phone for exact driving directions. Driving past Lyre village, from the Clonakilty side, take the first right (at the crossroads) and then take the second right driving down a narrow road and then the next turning to the right.



Important Notice/Disclaimer

Martin Kelleher Property Ltd. for themselves and for the vendors or lessors of the property whose agents they are, give notice that: The particulars are set out as a general outline for the guidance of intending purchasers or lessees, and do not constitute part of, an offer or contract. All descriptions, dimensions, references to condition and necessary permissions for use and occupation, and other details are given in good faith and are believed to be correct, but any intending purchasers or tenants should not rely on them as statements or representations of fact but must satisfy themselves by inspection or otherwise as to the correctness of each of them. No person in the employment of Martin Kelleher Property Ltd. or the vendors has any authority to make or give representation or warranty whatever in relation to this development. We have not carried out a structural survey and the services, appliances and specific fittings have not been tested. All photographs, measurements, distances, maps and floor plans referred to are given as a guide only and should not be relied upon for the purchase of carpets, curtains, or any other fixtures and fittings. Lease details, service charges, title and ground rent, rates, if applicable should be checked by your solicitor prior to exchange of contracts.