



# Decommissioning San Onofre

Nuclear Generating Station

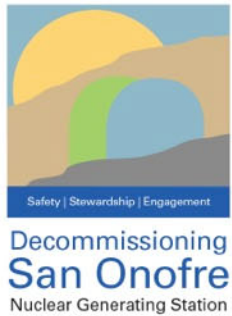
# Wheeler North Reef Expansion Project

Jenny McGee  
Project Manager, Restoration Ecologist



Wheeler North Reef  
Module 41  
September 9, 2009  
© Richard Herrmann / SCE

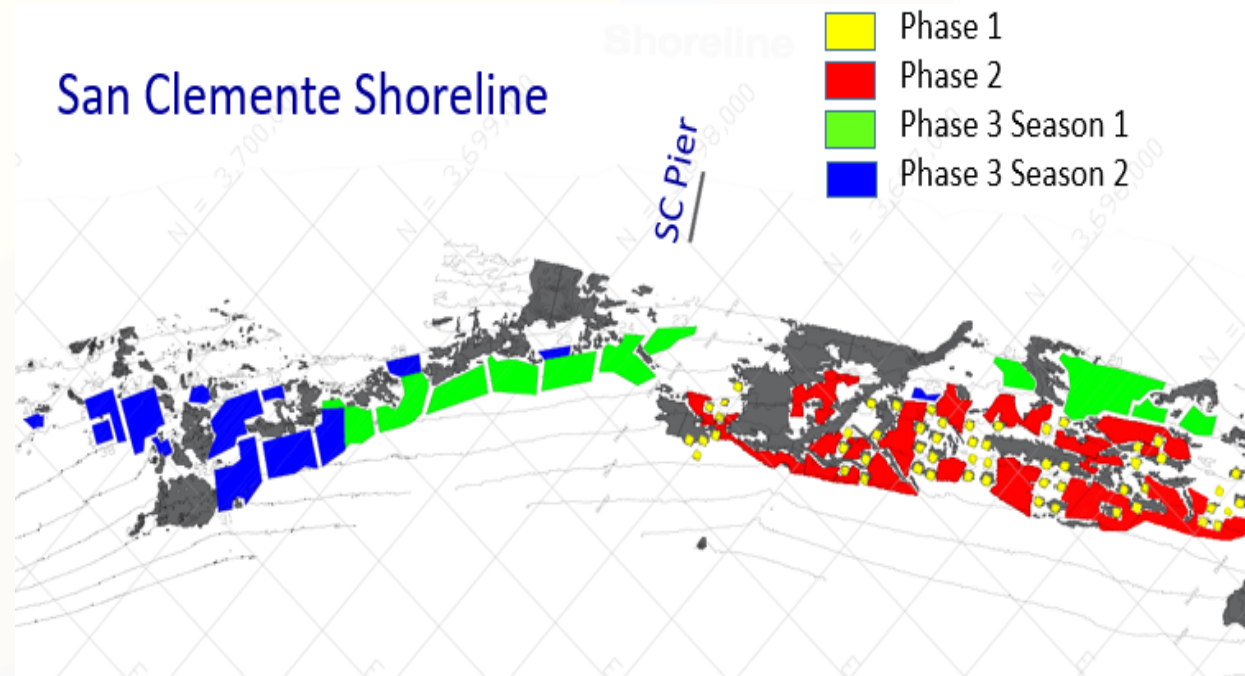
43

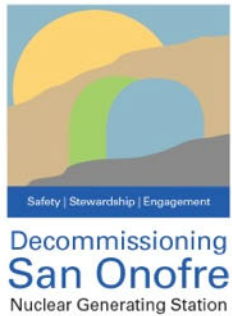


# Wheeler North Reef Expansion Project Complete

## Largest man-made reef in the world

- Built in three phases
- Phase 3 was 202 acres 150,900 tons of rock
- Reef more than doubled to 376 acres





# Consultation with Tribal Nation to Protect Cultural Resources

## Tribal Consultation under CEQA (Assembly Bill 52, 2015)

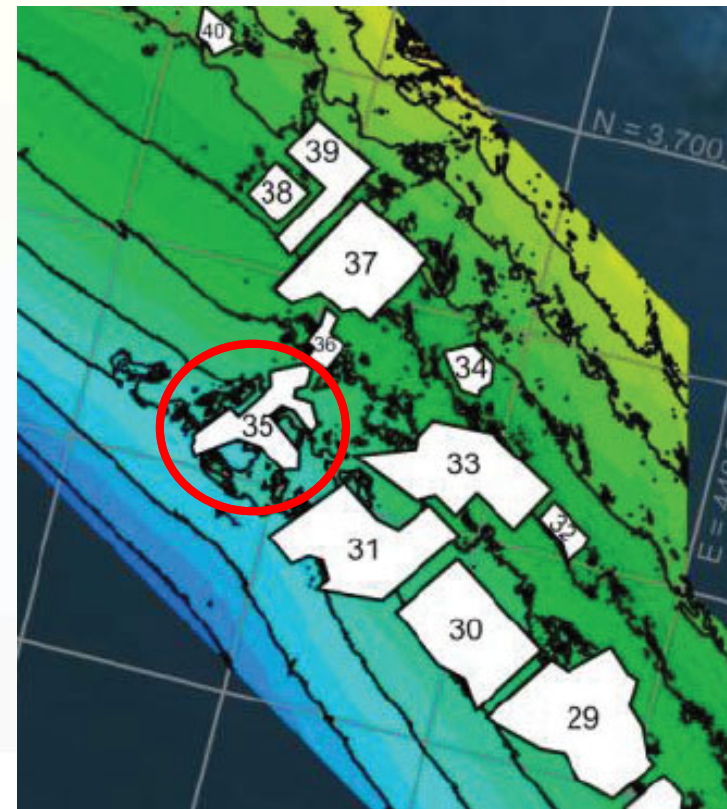
### Consultation Process:

- Tribal notification
- Acjachemen Nation pre-construction dive for resources in project area
- Identified cultural sensitivity within Polygon 35

### Consultation Outcome:

- SCE eliminated Polygon 35
- Post-construction cultural dive
- Ca. State Lands/ Dudek and SCE to develop professional paper on consultation process

## Bathymetry Map Showing Polygon 35



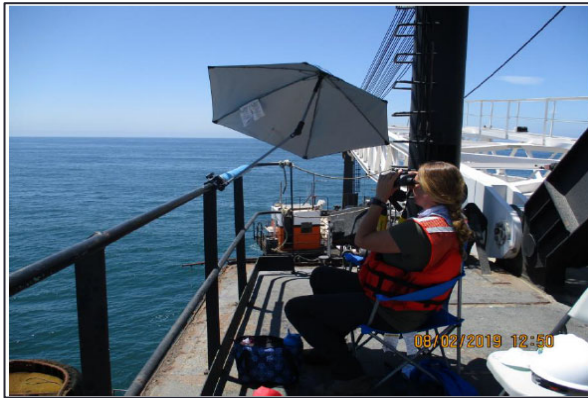


Decommissioning  
**San Onofre**  
Nuclear Generating Station

# Marine Wildlife Monitoring

## Fulltime Monitoring to Protect Marine Animals

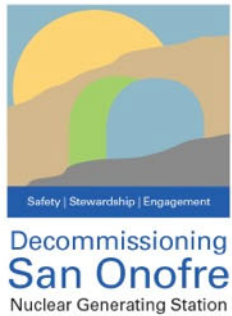
- Species identification
- Monitor compliance with applicable laws
- Stop Work Authority to avoid marine animal collisions or harm
- Exclusion Zone: 500 feet small animals; 1,640 feet large animals
- Trained dedicated boatmen to monitor transport vessels



## 2019 Observations

- Total number of sightings: 1,378
- Total number of animals: 1,253
- Total Stop Work orders: 17

46



# Monitoring Success: A Pathway Forward



## Coastal Commission/ SCE Agreement

- Defined compliance period, now tied to SONGS Operation life 32 years
- Shift performance standards
  - 896 tons of fish (28 tons/yr. x 32 years)
  - 4,800 acres of kelp (150 acres/yr. x 32 years)
  - 32 years of relative data performance
- Reduced annual monitoring effort
- Hard substrate monitoring every 5 years