

Main links: [Title page](#) [Introduction & guides](#) [INDEXES](#) [chapters](#) & [genera](#) [Open PDF printout of this file](#)

Salticidae (Araneae) genera of the world - an atlas
(unfinished manuscript)
by Jerzy Prószyński
Professor Emeritus, Museum and Institute of Zoology, Polish Academy of Sciences,
ul. Wilcza 63, 00-679 Warsaw, POLAND
e-mail: jerzy@proszynski.uw.edu.pl

Chapter 11 PELLENINES

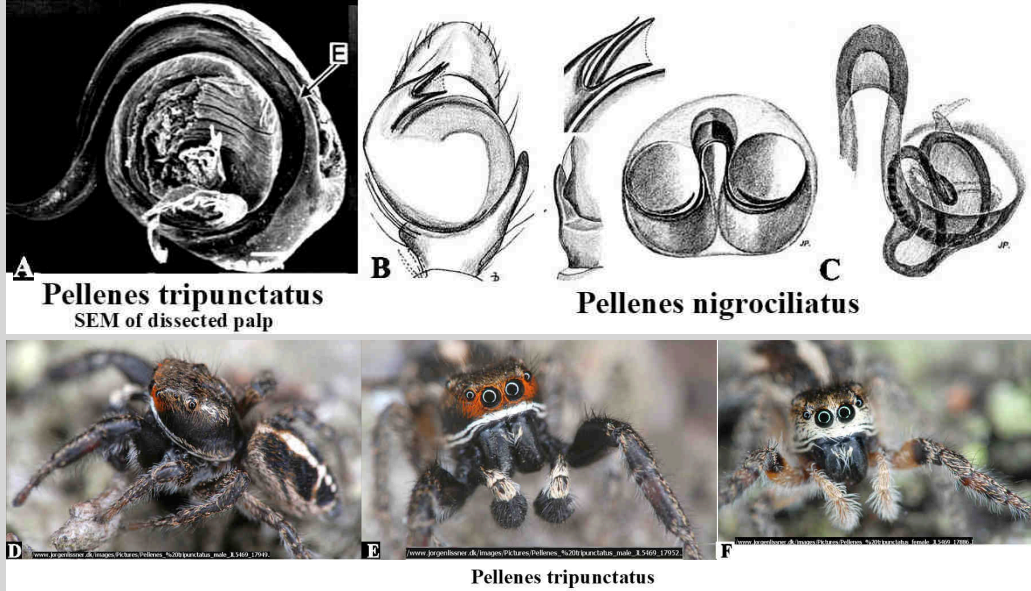
informal group of genera
Version August 24th, 2020.



symbol of the supragroup HYLLOIDA

Composition and searching on this page [Dexippus](#) [Pellenes](#) [including subgenera: ([Pellenes](#)) ([Pellap](#)) ([Pellevii](#)) ([Pelmirus](#)) ([Pelmultus](#)) ([Pelpaucus](#)) pending classification .

Exemplary representatives of the group



A - *Pellenes tripunctatus*- SEM of dissected palp, **B-C** - *Pellenes nigrociliatus* palp and epigyne, **D-F** - *Pellenes tripunctatus* color pattern of male: dorsal and frontal views and **H** - of female ©Photo J. Lissner, other sources - see below.
All ©copyrights are retained by the original authors and copyright holders, used here by their courtesy.

PELLENINES

informal group of genera

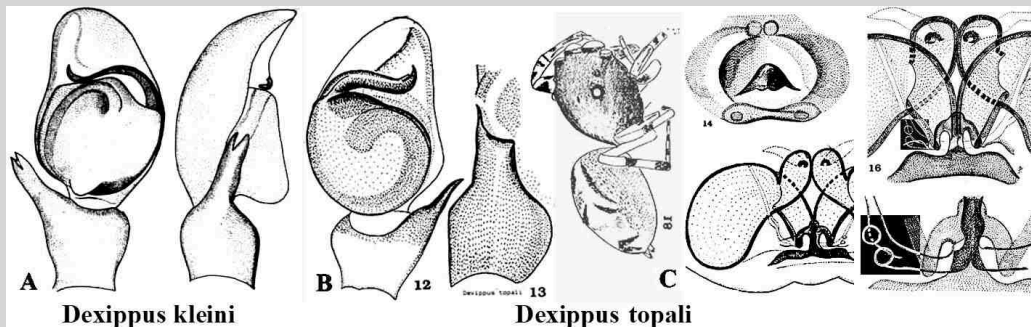
Mutual diagnostic characters of genera include: embolus hidden inside robust, fleshy structure, popularly mistaken for embolus, being in fact protective sheath hiding inside hairlike, long embolus. Epigyne with a pair of sclerotized grooves and prominent median pocket, the latter developed into prominent ridge in some species (*Pellenes tripunctatus*). Spermathecae and ducts heavily sclerotized, can form compact bodies with internal convoluted chambers.

Description. Palps with robust, fleshy protective sheath being modified conductor (see SEM of *Pellenes lapponicus* - Fig. A and tip of embolus of *P. nigrociliatus* - Fig. B above) and long, hairlike embolus hidden inside. Epigyne and its internal structures in some species (*P. lapponicus*, *P. ostrinus*, *P. diagonalis*) look as intermediate to HABRONATTINES. Body proportions characteristic, although difficult to describe, color patterns diversified, consisting of elements permitting to identify genera (see illustrations below).

REMARK. In the traditional system subfamily Pelleninae contained also genus *Habronattus*, here considered separate group HABRONATTINES because of presence of striking conductor, separated from embolus!

Gen. *Dexippus* Thorell, 1891

Type species *Dexippus kleini* (3 species)
See more species at [Dexippus-Q+M](#)



A-B - *Dexippus kleini*, C - *Dexippus topali*.

SOURCE: A-B - Prószyński 1984a. Atlas rysunków diagnostycznych mniej znanych Salticidae (Araneae). *Zeszyty Naukowe Wyższej Szkoły Rolniczo-Pedagogicznej*, Siedlce : 33, C - Prószyński 1992b. *Ann. zool.* 44, 9: 170-171, f 12-19. All ©copyrights are retained by the original authors and copyright holders, used here by their courtesy.

Gen. *Pellenes* Simon, 1876

Type species *Pellenes tripunctatus* (77 species)
See more species at [Pellenes-Q+M](#)

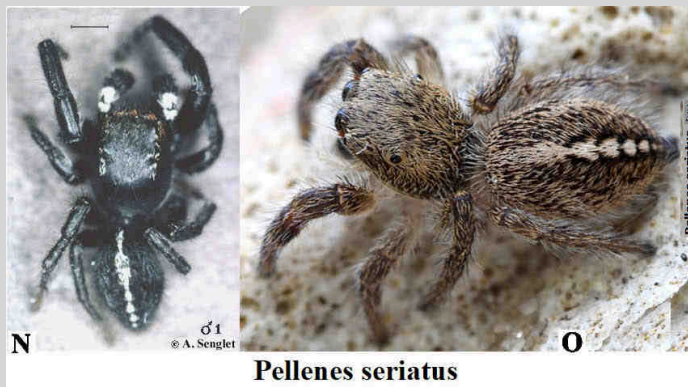
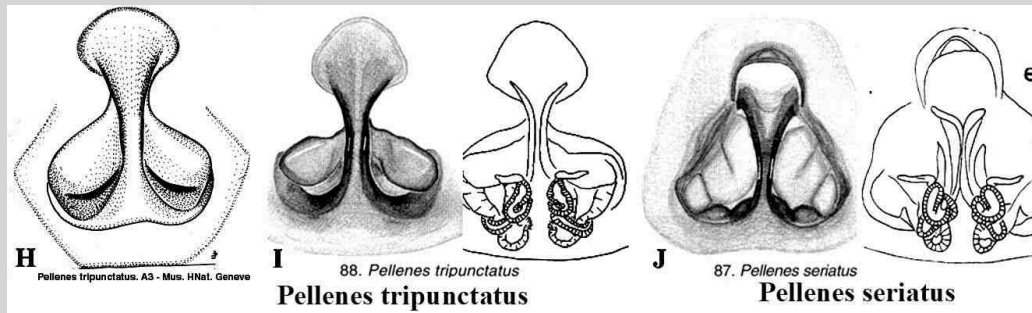
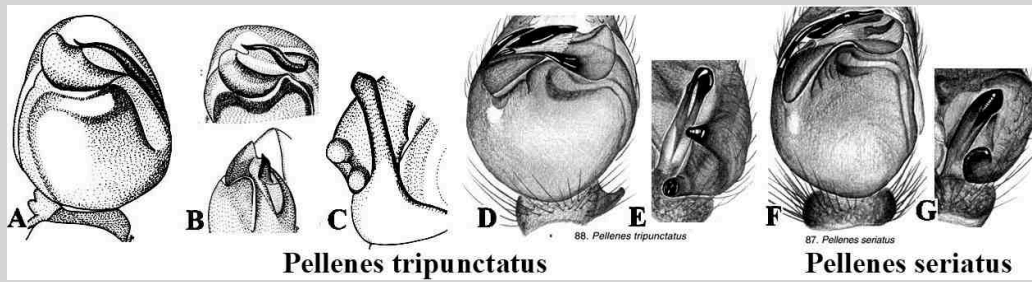
Genus divided incompletely by Logunov, Marusik & Rakov, 1999 into four subgenera (not displayed by World Spider Catalog, ver. 20.0), *Pellenes* (*Pellenes*)-Q *Pellenes* (*Pelmirus*)-Q Logunov, Marusik, Rakov, 1999 (5 species), *Pellenes* (*Pelmultus*)-Q Logunov, Marusik & Rakov, 1999 (34 species) *Pellenes* (*Pelpaucus*)-Q Logunov, Marusik, Rakov, 1999 (12 species) - with several species left unclassified. Additional

subgenus was delimited by Prószyński in 2016 - *Pellenes* (*Pellap*) Prószyński, 2016 (1 species) and one more in the present survey - *Pellenes* (*Pellevis*) subgen. n. These subgenera have mutual diagnostic characters, except body shape, but differ distinctly by structure of palps, epigyne and spermathecae, so they deserve status of separate genera. Particularly intriguing is similarity of epigyne of *Pelpaucus* to HABRONATTINES, unfortunately spermathecae of the latter are almost unknown (in two species out of ninety four).

Subgenus *Pellenes* (*Pellenes*) Simon, 1876

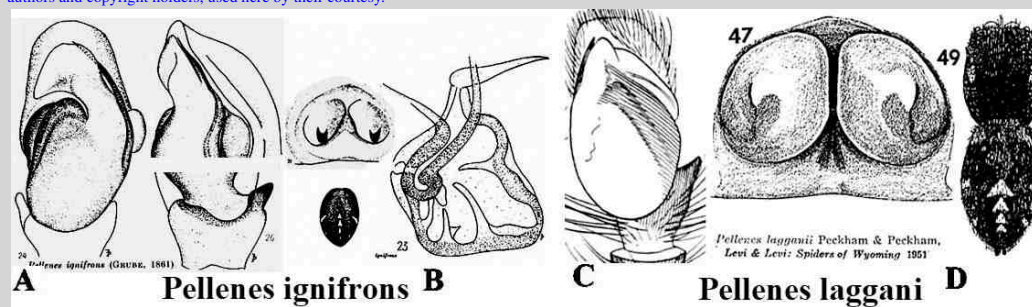
Representative species *Pellenes tripunctatus* (5 species)

See more species at ([Pellenes](#))-Q



A-E, H-I, K-M - *Pellenes tripunctatus*, F-G, J, N-O - *Pellenes seriatus*, P - *Pellenes* sp. from Israel.

SOURCE: A-C, H - Prószyński 1984a. Atlas rysunków diagnostycznych mniej znanych Salticidae (Araneae). Zeszyty Naukowe Wyższej Szkoły Rolniczo-Pedagogicznej, Siedlce : 103, D-G, I-J - Metzner 1999. Andrias 14: 123-124, 242, table 87-88, K-M - ©Photo J. Lissner, N - ©Photo A. Senglet, P - ©Photo M Schaefer. All copyrights are retained by the original authors and copyright holders, used here by their courtesy.



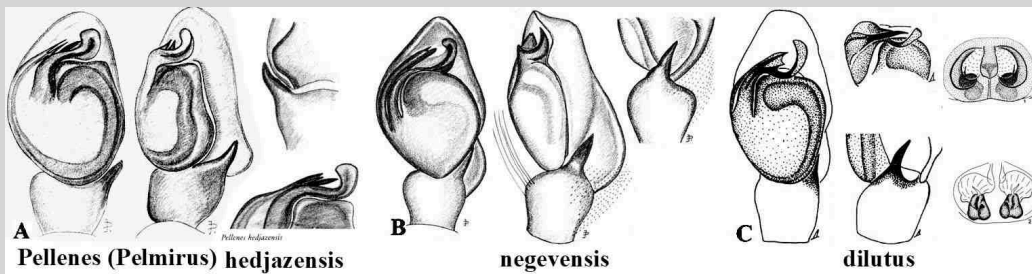
A-B - *Pellenes ignifrons*, C-D - *Pellenes laggani* [a synonym?].

SOURCE: A-B - Prószyński 1971: 214, f. 20-27, C-D - male by Peckham & Peckham 1909: 532, 560, D - female by Levi & Levi 1951. Zoologica 36(4): 232, f 47, 49. All copyrights are retained by the original authors and copyright holders, used here by their courtesy.

Pellenes (*Pelmirus*) Logunov, Marusik, Rakov, 1999

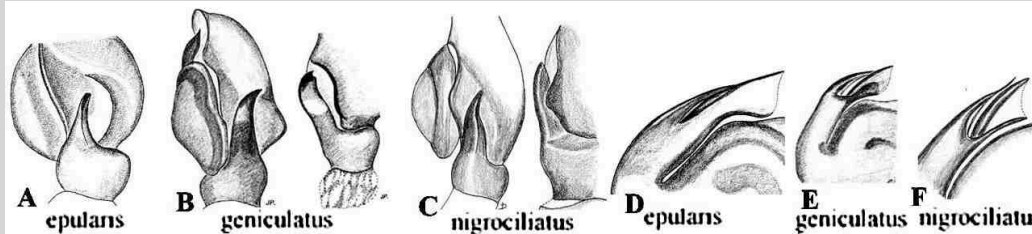
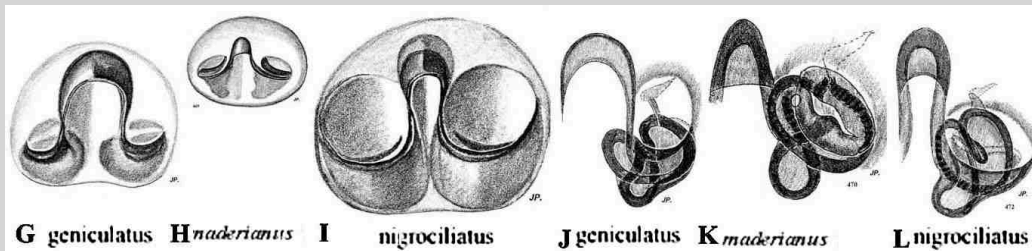
Representative species *Pellenes dilutus* Logunov, 1995 (5 species)

See more species at ([Pelmirus](#))-Q

A - *Pellenes (Pelmirus) hedjazensis*B - *Pellenes (Pelmirus) negevensis*C - *Pellenes dilutus*A - *Pellenes (Pelmirus) hedjazensis*, B - *Pellenes (Pelmirus) negevensis*, C - *Pellenes dilutus*.

SOURCE: A - Proszynski 1993, F. Saudi Ar. 13: 44-46, ff. 32-36, B - Proszynski J. 2000. Arthr. Sel., 8(4): 257, figs 96-98, C - Logunov, 1995 : 237, 240, f. 1-11.,

All ©copyrights are retained by the original authors and copyright holders, used here by their courtesy.

Pellenes (Pelmultus) Logunov, Marusik & Rakov, 1999Representative species *Attus geniculatus* Simon, 1868 (34 species)See more species at ([Pelmultus](#))-QA - *epularis*B - *geniculatus*C - *nigrociliatus*D - *epularis*E - *geniculatus*F - *nigrociliatus*G - *geniculatus*H - *maderianus*I - *nigrociliatus*J - *geniculatus*K - *maderianus*L - *nigrociliatus*

M

N

O

Pellenes nigrociliatus*Pellenes bitaeniata* BOSTANS, nuda, ZAVRKA

P

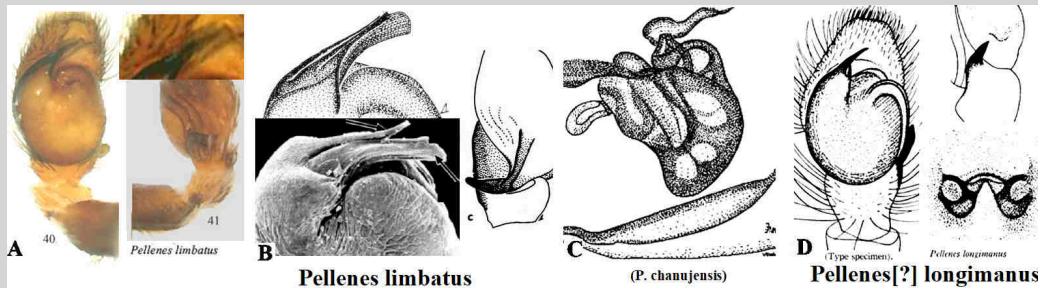
Pellenes sp. [AUS-294] IRM, 20 Mar 2012. ©Photo R. Whyte

Q

***Pellenes* sp. from Australia**Diagnostic characters of *Pellenes (Pelmultus)*: A, D - *epularis*, B, E, G, J - *geniculatus*, C, F, I, L - *nigrociliatus*, H - *maderianus*, M - *Pellenes (Pelmultus) nigrociliatus* and (N-O) its characteristic behavior, P-S - *Pellenes* sp. from Australia.

SOURCE: M - Proszynski, Ann. zool., 2003a, 53 (1): 116-117, figs 460, 471-472, 729-733, M - ©Photo J. Lissner, N-O - ©Photo H. Bellman, P-Q - ©Photo R. Whyte. All ©copyrights are retained by the original authors and copyright holders, used here by their courtesy.

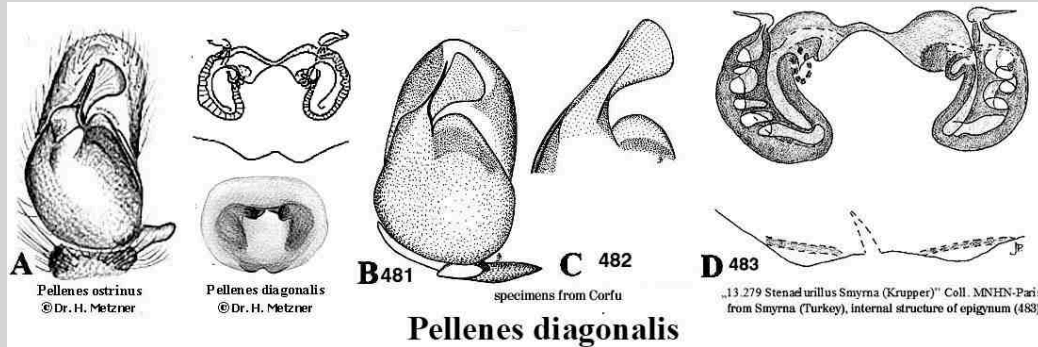
Pellenes (Pelpaucus) Logunov, Marusik, Rakov, 1999Representative species *Pellenes limbatus* Kulczyński, 1895 (12 species)See more species at ([Pelpaucus](#))-Q



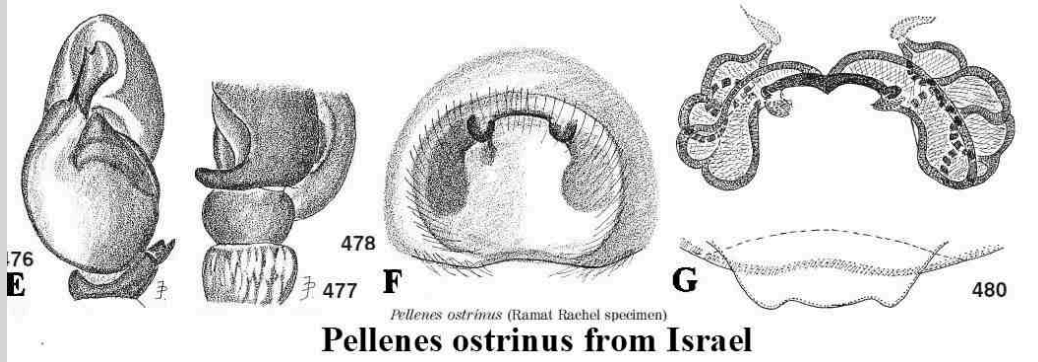
A-B - *Pellenes limbatus*, C - spermatheca of *Pellenes limbatus* (as *P. chanujensis*), D- *Pellenes*[?] *longimanus*.

SOURCE: A-B - Marusik, Fritzen & Song, 2007 *Arthropoda Selecta* 15: 269, f. 40-41, B - same, Logunov, Marusik, Rakov 1999. *Journal of Natural History*, 33: 105, f. 10, 15, 17, C - Proszynski 1982. *Ann. hist. nat. Mus. hung.*, 74: 285-287, ff. 37-40, D - Kaston B. J. 1948: 70: 462, t 91, f 1695-97. All copyrights are retained by the original authors and copyright holders, used here by their courtesy.

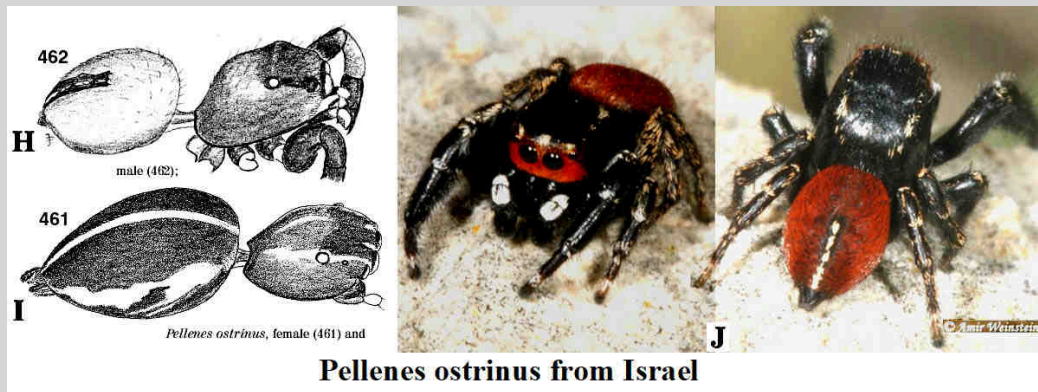
Pellenes diagonalis vs. *Pellenes ostrinus* controversy



Pellenes diagonalis



Pellenes ostrinus from Israel



Pellenes ostrinus from Israel

K 46 E. SIMON. (36)

15. *ATTUS DIAGONALIS*, Sp. nov.

Attus lippiens ♀ Lud. Koch, Verh. Zool. Wien., p. 881 (Voy. plus loin, ♂).

Long. ♂ 5 1/2 mill., ♀ 6 1/2 à 7 mill.

Corselet noir, avec une vague bordure grise. Abdomen noir mal avec une bordure et une ligne médiane blanches. Pattes noirâtres.

52 E. SIMON. (42)

21. *ATTUS OSTRINUS*, Sp. nov.

Long. ♂ 4 mill.

Tête rouss. Thorax noir. Abdomen rouge, avec une ligne blanche en arrière. Pattes noires.

3462 *Pellenes diagonalis* (SIMON, 1868).
Attus diagonalis: SIMON, 1868b, p.46 (n.sp.) — PAVESI, 1876a, p.72; 1878c, p.394.
Salticus diagonalis: PICK-CAMBR.O., 1872a, p.321.
Pellenes diagonalis: SIMON, 1876a, p.101; 1878b, p.205; 1884c, p.313. — REIMOSER, 1919, p.114; 1930a, p.151. — KERVILLE, 1926, p.70. — BRISTOWE, 1935b, p.774. — DRENSKY, 1936b, p.191. — BODENHEIMER, 1937, p.240.
 Corfou, Grèce, Balkans, Syrie, Palestine.

L 3468 *Pellenes ostrinus* (SIMON, 1868).
Attus ostrinus: SIMON, 1868b, p.52 (n.sp.) — PAVESI, 1878c, p.395.
Salticus ostrinus: PICK-CAMBR.O., 1872a, p.322.
Pellenes ostrinus: SIMON, 1876a, p.101; 1884c, p.311; 1901a, p.666. — REIMOSER, 1919, p.114; 1930a, p.151. — BRISTOWE, 1935b, p.774 (*ostrinus*!). — DRENSKY, 1936b, p.191. — BODENHEIMER, 1937, p.240.
 Corfou, Grèce, Palestine.

A-G - *Pellenes diagonalis*, E-J - *Pellenes ostrinus*, K - abstracts of original descriptions of *Pellenes diagonalis* and *Pellenes ostrinus* (the only tangible characters are color of abdomen of male: "noir" versus "rouge", and length of abdomen: 5,5 mm. versus 4,5 mm), L - literature

quotations until 1939.

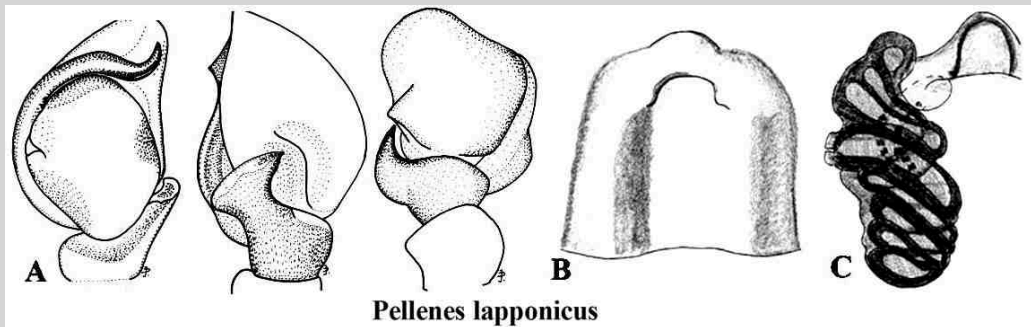
SOURCE: A - Metzner a 1999. Andrias 14: 121, 240, table 86a-k, B-C - Prószyński 1984a. Atlas rysunków diagnostycznych mniej znanych Salticidae (Araneae). *Zeszyty Naukowe Wyższej Szkoły Rolniczo-Pedagogicznej*, Siedlce: 102, D-L - Prószyński 2003a. Ann. zool. 53 (1): 117-119, f. 461-462, 476-482, J - ©Photo A. Weinstein, K - Simon, E. (1868b). Monographie des espèces européennes de la famille ... *Annales de la Société Entomologique de France* (4) 8: 46, 52, Bonnet P. (1958) *Bibliographia Araneorum*, (4me partie: N-S 3482, 346. All copyrights are retained by the original authors and copyright holders, used here by their courtesy.

COMMENT: The status of species *Pellenes diagonalis*, E-L - *Pellenes ostrinus* remains uncertain, with the only tangible characters in the original descriptions by Simon (1868) are color pattern of abdomen of male: "noir" versus "rouge" (see illustrations H and J, above). The only diagnostic drawings were published by Prószyński 1984, 1995-2016, 2003, 2017 and Metzner 1999: 121, f. 86a-k and 128, f. 91a-i. none of them showing type species. Editors of WSC twice changed alignment by Prószyński following undocumented opinions of Cantarella & Alicata (2002) and Schäfer & Breitling (2018) - these are valuable but do not solve the problem. The arguments used by Simon are weakened by opinions that red coloration of *Pellenes ostrinus* is due to immature state of studied specimens (illustrations H and J - but the latter has adult palps developed). I propose to delay decision on status of these names until better documentation of palps and spermathecae will be available and, possibly, series of photos of pre- and post-ecdysis of red species to see whether that coloration is really temporary.

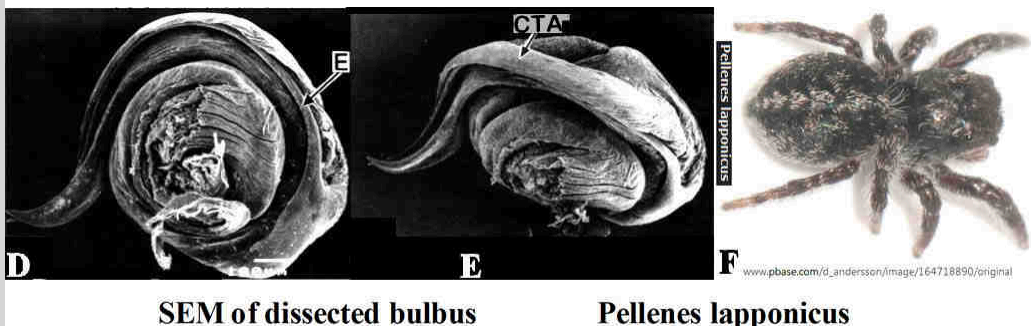
Pellenes (Pellap) Prószyński, 2016 subgen. n.

Type species *Pellenes (Pellap) lapponicus* (1 species)

See more species at [\(Pellap\)-Q](#)



Pellenes lapponicus



SEM of dissected bulbus

Pellenes lapponicus

A-C - *Pellenes (Pellap) lapponicus*, D-E - same, scanning electron microscope photo of dissected bulbus and embolus, dorsal (interior) side up, F - photograph of male.

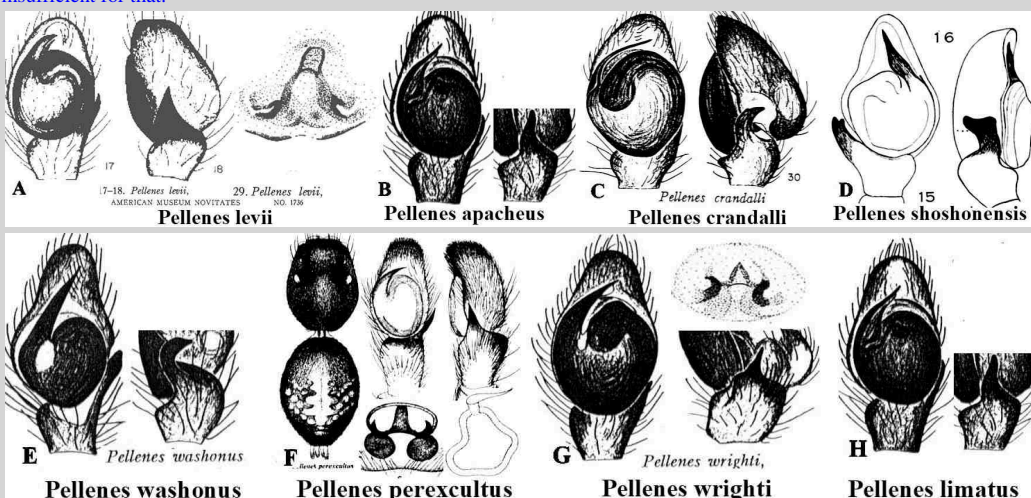
SOURCE: A-C - Prószyński 1991: 512-514 ff. 1369.1-4, D-E - Logunov, Marusik 1999c. Arthr. Sel. 8(4): 269, f. 22-23, F - ©Photo D. Andersson [Davida@live.se] - https://www.pbase.com/d_andersson/image/164718890/original. All copyrights are retained by the original authors and copyright holders, used here by their courtesy.

Subgenus *Pellenes (Pellevii) subgen. n.*

Type species *Pellenes levii* Lowrie & Gertsch, 1955 (9 species)

See more species at [Pellenes-Q+M](#)

Group of species with palps and epigynae strikingly different from other *Pellenes* (rather resembling *Bianor* - as far as could be suspected from rather uninformative drawings) and pending further research, They should preferably be upgraded to full genus, but data heretofore available are insufficient for that.

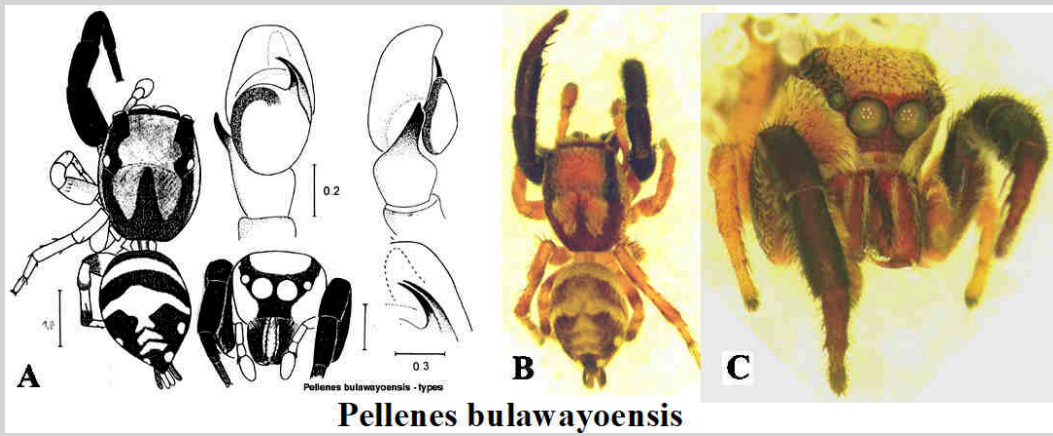


A - *Pellenes levii*, B - *Pellenes apacheus*, C - *Pellenes crandalli*, D - *Pellenes shoshonensis*, E - *Pellenes washonus*, F - *Pellenes perexcultus*, G - *Pellenes wrighti*, H - *Pellenes limatus*.

SOURCE: A - Lowrie & Gertsch, 1955: 25, f. 17-18, 29, B - Gertsch 1934: 20, figs 15-16, C - Lowrie, Gertsch, 1955. Am. Mus. Nov. 1736: 25, 23, f. 23-24, D - Lowrie, Gertsch, 1955. Am. Mus. Nov. 1736: 23, f. 23-24, E - Lowrie, Gertsch, 1955. Am. Mus. Nov. 1736: 25, f. 17-18, 29, F - Clark, Benoit, 1977: 220: 100, f. 42-43, G - Lowrie, Gertsch, 1955. Am. Mus. Nov. 1736: 28, f. 13-14 +28, f. 13-14, H - Lowrie, Gertsch, 1955. Am. Mus. Nov. 1736: 25, f. 17-18, 29. All copyrights are retained by the original authors and copyright holders, used here by their courtesy.

Pellenes (pending classification)

species [Pellenes-Q+M](#)



A-C - *Pellenes bulawayoensis*.

SOURCE: A - Wesolowska W. 1999a. *Arnoldia Zim.*, 10(15): 163, figs 52-56, B-C - same, Haddad, Wesolowska 2011 © *Afr. Invertebr.* 52(1): 93-95, photo 221-222, All ©copyrights are retained by the original authors and copyright holders, used here by their courtesy.