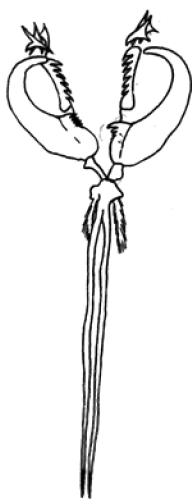


Pictorial Key to the *Drilonereis* species of California

By

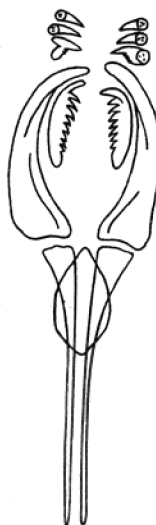
Lawrence L. Lovell, LACSD

1a. Maxillae I with dentate base



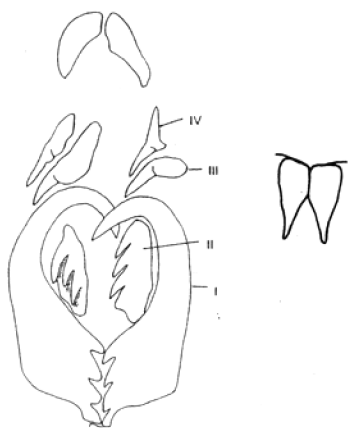
Go to 2

1b. Maxillae I with smooth base



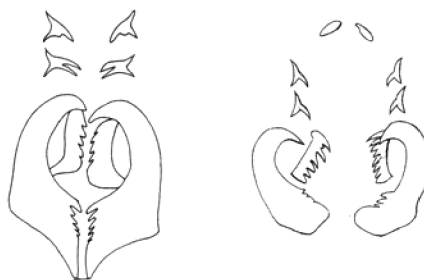
Go to 7

2a. Mandibles present, well developed



Go to 3

2b. Mandibles absent or reduced

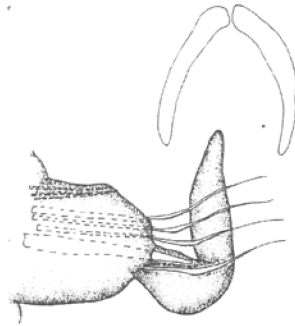


Go to 5

3a. Mandibles triangular fused at base



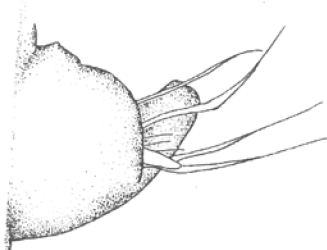
3b. Mandibles rod-like, not fused



Go to 4

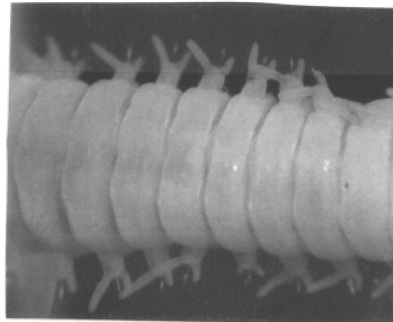
Drilonereis spectabilis
Hilbig, 1995

4a. Posterior body with short post-setal lobes.



Drilonereis falcata
Moore, 1911

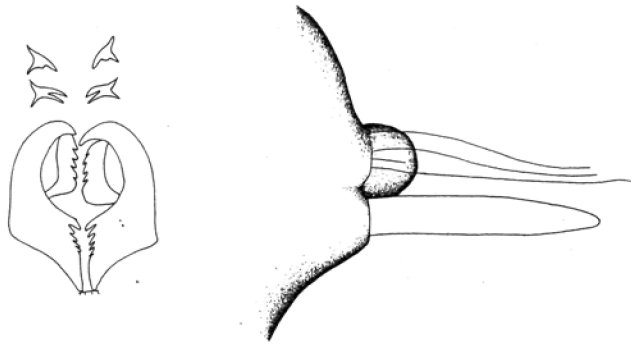
4b. Posterior body with long pre- and post-setal lobes, pre-setal longest.



Drilonereis sp LA1 Lovell, 2006§

5a. Mandibles absent, posterior body with papillar post-setal lobe

5b. Mandibles reduced or absent, posterior body with digitate, pre- and post-setal lobes.

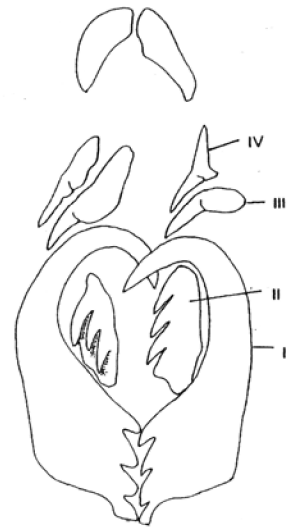
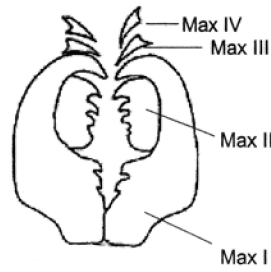
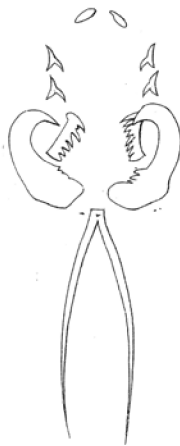


Drilonereis mexicana
Fauchald, 1970

Go to 6

6a. Maxillae II w/ 6-8 teeth

6b. Maxillae II w/ 3-4 teeth



Drilonereis longa
Webster, 1879

Drilonereis sp. A SCAMIT
Drilonereis longa of Hilbig, 1995

7a. Mandibles absent



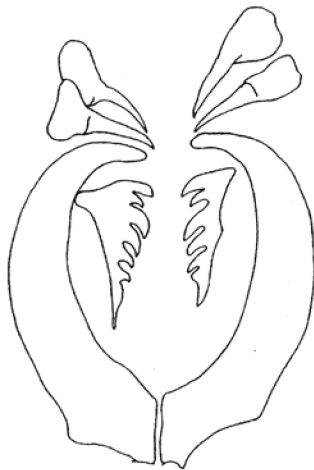
Go to 8

7b. Mandibles present



Drilonereis filum
(Claparede, 1868)

8a. Maxillae II w/5-7 large teeth



Drilonereis nuda
Moore, 1909

8b. Maxillae II smooth, w/o teeth



Drilonereis forcipes
(Hartman, 1944)

Published figures used in this key come from the following sources:

Fauchald, 1970. Polychaetous Annelids of the Families Eunicidae, Lumbrineridae, Iphtimidae, Arabellidae, Lysaretidae and Dorvilleidae from Western Mexico. Allan Hancock Monographs in Marine Biology, Number 5: 1-335

Hartman, O. 1968. Atlas of the Errantiate Polychaeteous Annelids from California. Allan Hancock Foundation, University of Southern California, Los Angeles. 828 pp.

Hilbig, 1995. Family Oeonidae Kingberg, 1865. *in* Taxonomic Atlas of the Benthic Fauna of the Santa Maria Basin and the Western Santa Barbara Channel, vol. 7 – the Annelida Part 2, Polychaeta: Phyllodocida (Syllidae and Scale-Bearing families), Amphinomida, and Eunicida, editors J.A. Blake, B. Hilbig, and P.H. Scott. Santa Barbara Museum of Natural History. Santa Barbara, CA. pp. 315-339.

SCAMIT Newsletter Vol. 16 (10). *Drilonereis* sp A voucher sheet.

Webster, 1879. Annelida Chaetopoda of the Virginia coast. Transactions of the Albany Institute 9:202-272, 11 pls.

Table of Drilonereis species of California

By Lawrence L. Lovell, LACSD
September 2006

Taxa	Mandibles	M I base	M II	M III	M IV	M V	anterior setal lobes	posterior setal lobes	notes
<i>D. falcata</i> Moore, 1911	long, triangular, fused at widest part	dentate	6-7 teeth (Hartman '68); 6-9 teeth (Hilbig '95)	3 teeth; 1 lg, 2 sm (Hilbig, '95); 1 (Hartman, '68)	1 tooth	1 tooth	pre- truncate, post-conical	pre short; post long	
<i>D. spectabilis</i> Hilbig, 1995	large rodlike	dentate	asymmetrical L-8 large, 3 small; R-6 large, 3 small	large main and 4 small	1 tooth	1 tooth	pre truncate, post conical, conspicuous	pre conical; post foliaceous past set.70	
<i>D. longa</i> Webster, 1879	reduced or absent	dentate	Holo 6-8 teeth(Harris); 6-8 teeth(Hartman, '68); 3-4 teeth(Hilbig, '95)	1 tooth	1 tooth	absent	pre-none; post- short, papillar	pre and post long	M II counts need clarification
<i>D. sp. A</i> SCAMIT, 1998§	reduced or absent	dentate	3-4 marginal teeth	1 tooth	1 tooth	?	pre-none; post- short, papillar	pre and post long	can be parasitic, M II counts need clarification
<i>D. sp LA1</i> Lovell 2006§	well developed, triangular	dentate	5-6 teeth	1 tooth	1 tooth	absent	pre absent, short post	pre and post long, pre longer on most set.	this is a new provisional
<i>D. mexicana</i> Fauchald, 1970	absent	dentate	4 teeth	2 teeth	1 tooth	absent	pre-none; post- short, papillar	pre none; post short, papillar	acicula projecting??
<i>D. filum</i> (Claparede, 1868)	well developed	smooth	5 (Claparede, 1868); 9 (Fauchald, 1970) as <i>D.?</i> <i>filum</i>	3 (C, 1868) 6 (F, 1970)	1 (C, 1868) 3 (F, 1970)	absent (C, 1868) 1 (F, 1970)	pre-rounded post-conical	pre short; post digitate, 2X pre	
<i>D. forcipes</i> (Hartman, 1944)	absent	smooth	smooth, no teeth	1 tooth	1 tooth	absent	pre truncate, post short	pre truncate; post short	parasitic
<i>D. nuda</i> Moore, 1909	absent	smooth	5-7 large teeth	1 tooth, long and pointed	1, long and pointed	absent, or when present 2 minute teeth (Hilbig, '95)	pre-truncate post-conical	pre short; post long	