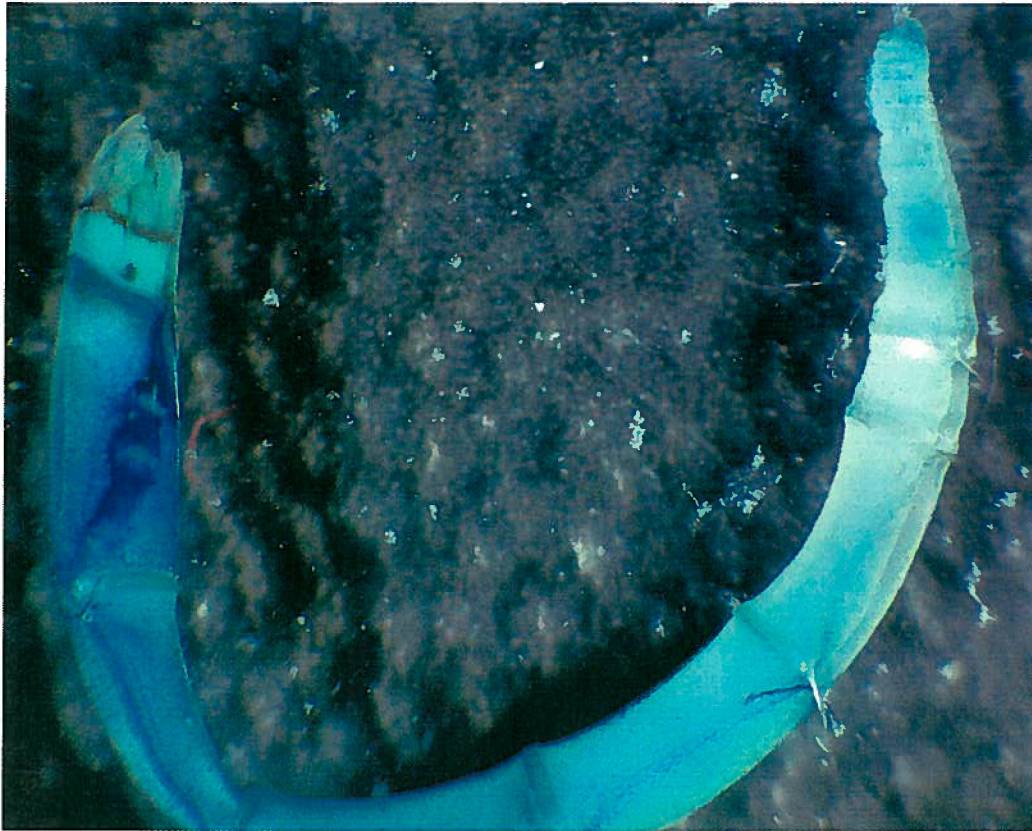




**Fig. 8** *Galathowenia pygidialis* posterior end, stained with methyl green. Sta 2691(2), 7/25/2000, 210 ft.  
Image by S. Douglass



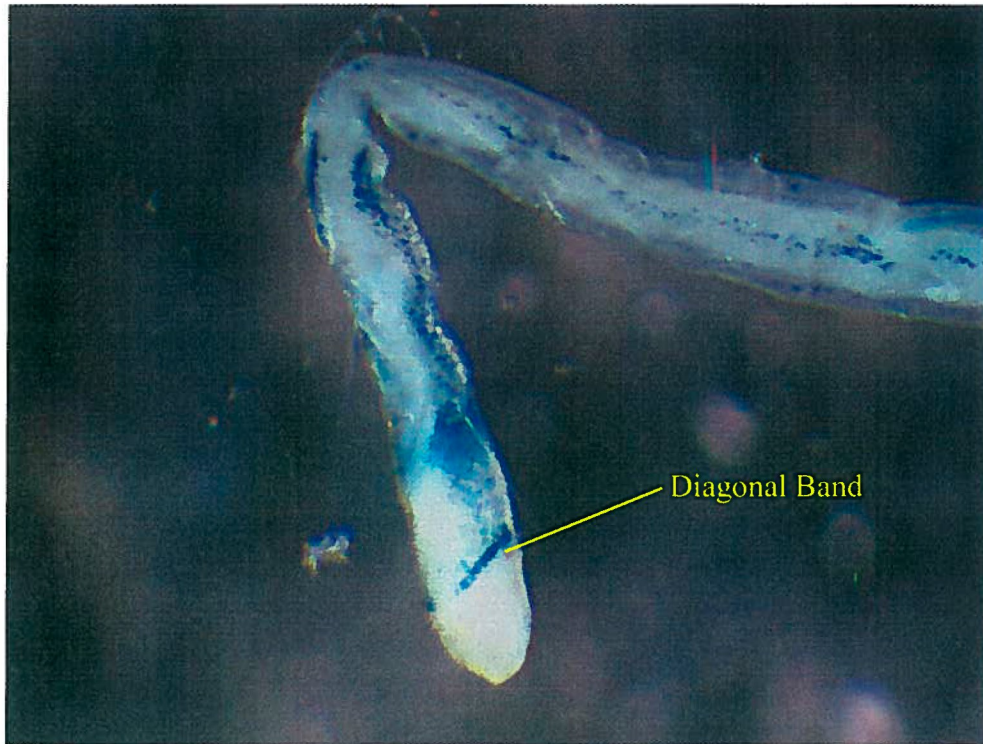
**Fig. 9** *Galathowenia pygidialis* anterior end, lateral view, stained with methyl green. Sta 2691(2), 7/25/2000, 210 ft. Image by S. Douglass



**Fig. 6** *Owenia collaris*, lateral view, stained with methyl green. Sta 17930, 7/26/1994, 23m  
Image by S. Douglass



**Fig. 7** *Myriowenia californiensis*, lateral view, stained with methyl green  
Station data unknown. Image by S. Douglass



**Fig. 10** *Myriochele striolata* anterior end, lateral view, stained with methyl green. Sta 2696(1), 7/25/2000, 310 ft. Image by S. Douglass



**Fig. 11** *Myriochele gracilis* anterior end, lateral view, stained with methyl green. Sta E9(1), 4/4/2002, 381 ft. Image by S. Douglass