

Voucher#: SCCWRP 32

Literature: Clark, H.L., 1911
McClendon, J.F., 1909
May, R.M., 1924
Boolootian, R.A. and D. Leighton, 1966
Word, J.Q., 1984 (Unpublished Manuscript)

Primary Diagnostic Characters: aboral surface of disk is spiny, not granulated;
(Figure 1) the radial shields are not covered with spines;
disk spines are not forked;
six to eight slender, long arm spines

Related Species and Character Differences:

Ophiopholis bakeri McClendon, 1909 (Figure 2)
the radial shields are covered with spines
the disk spines are forked
four to six moderately long, minutely thorny arm spines

Fig. 1. a. aboral disk
b. oral disk
(from Clark H.L. 1911)
p. 120

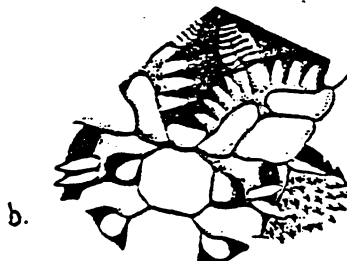
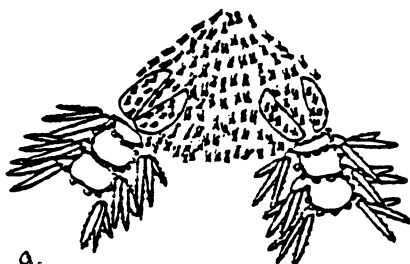
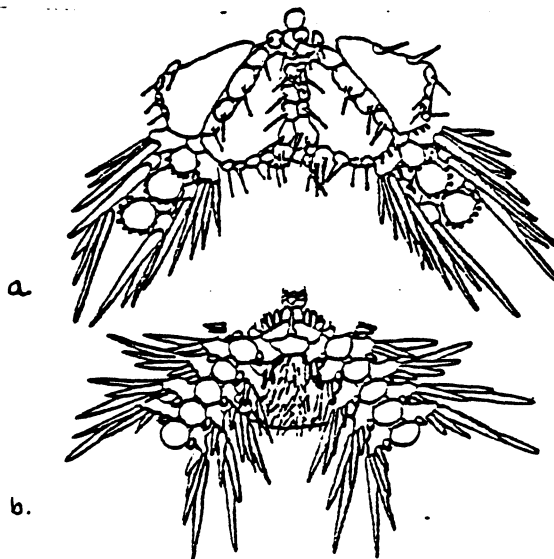
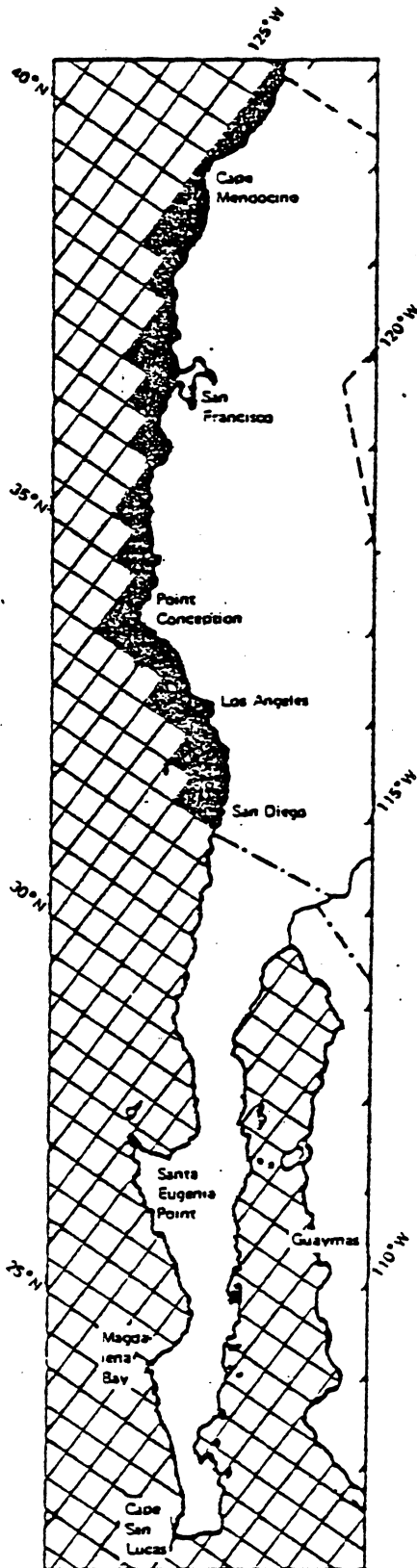


Fig. 2. a. aboral disk (from May R.M. 1924, p. 279)
b. oral disk (from Boolootian and Leighton 1966, p. 19)



Range: Washington to California

Habitat: 500-1400 meters; silty-sand, green mud, clay