

Trochochaeta multisetosa (Oersted, 1844)

Trochochaetidae

Voucher # AHF 19

March 5, 1984

Literature Cited:

- Hartman, O. 1947, J. Wash. Acad. Sci., Vol. 37; as Disoma franciscanum
Hartman, O. 1969, 'Atlas', Sedentaria
Pettibone, M.H. 1963, U.S.N.M. Bull., 227:310
Pettibone, M.H. 1976, Smith. Contr. Zool., 230:1

Primary Diagnostic Characters:

- 1st parapodia large and directed forward;
2nd setiger with thick yellow spines;
3rd setiger with dark brown spines;
post-setal lobes marginally serrated, diminishing after setiger 10;
emerging abdominal notopodial spines appear stellate;
ventral papillae 3-4 pair per segment.

Related Species and Character Differences:

Trochochaeta carica

- emerging abdominal notopodial spines arranged in an arc (do not appear stellate);
ventral abdominal papillae—single pair per segment.

Range:

West Greenland, Faroes, Iceland, Swedish and Danish waters, western Baltic, Gulf of St. Lawrence to Massachusetts, central California, northern Sea of Japan.

Habitat:

subtidal to 740 meters

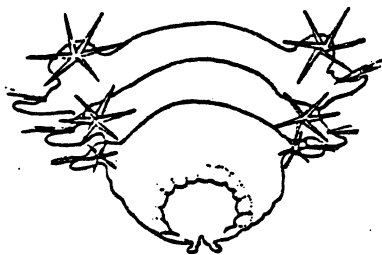


Fig. 1 Pycnidium
Hartman, 1969

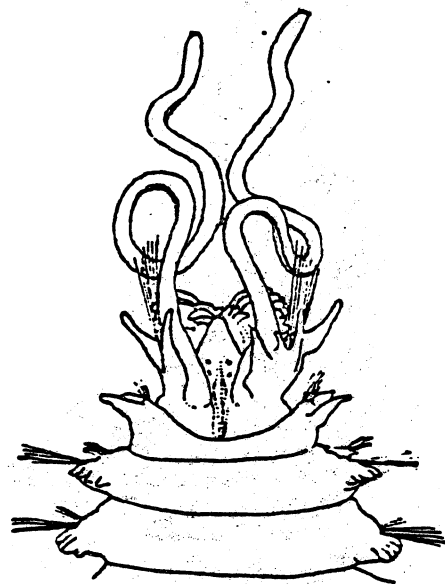


Fig. 2. Anterior
Hartman, 1969