

# *Geitodoris planata*

Gastropoda (Mollusca:Nudibranchia)



A small sea slug it is generally brown to orangey brown in colour (as shown). Typically confused with *Archidoris pseudoargus* which tends to be far more variable in colour and larger than *G. planata*. However *G. planata* has oral tentacles that are absent in *A. pseudoargus*. In order to verify identification however brown spots on the underside of the mantle are present only in *G. planata*.

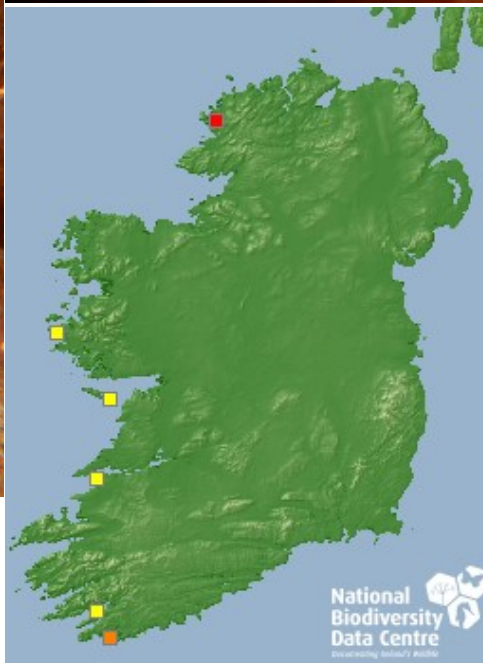
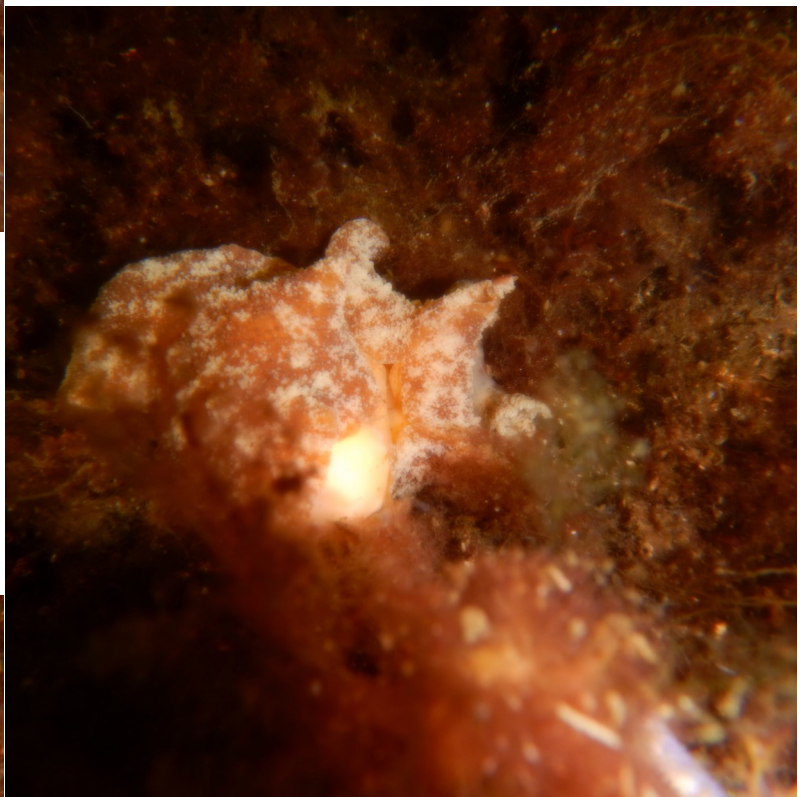


As above this species is uncommon in Britain particularly on the west coast so it may be absent from the east coast of Ireland. However due to the lack of recording effort and records the distribution in Ireland is currently unknown.

Mollusca->Gastropoda->Nudibranchia->Doridoidea

IUCN Red List Categorisation: Not Assessed

Not much is known about the distribution of this species in Irish waters, it may be widespread but uncommon or heavily under recorded, though with few records from British west coast it may be absent from the east coast. A shallow water species that feeds on sponges it can easily be confused with the common sea lemon *Archidoris pseudoargus*.



**National Biodiversity Data Centre**  
Documenting Ireland's Wildlife

**seasearch**  
Ireland

Every dive can be a Seasearch dive

