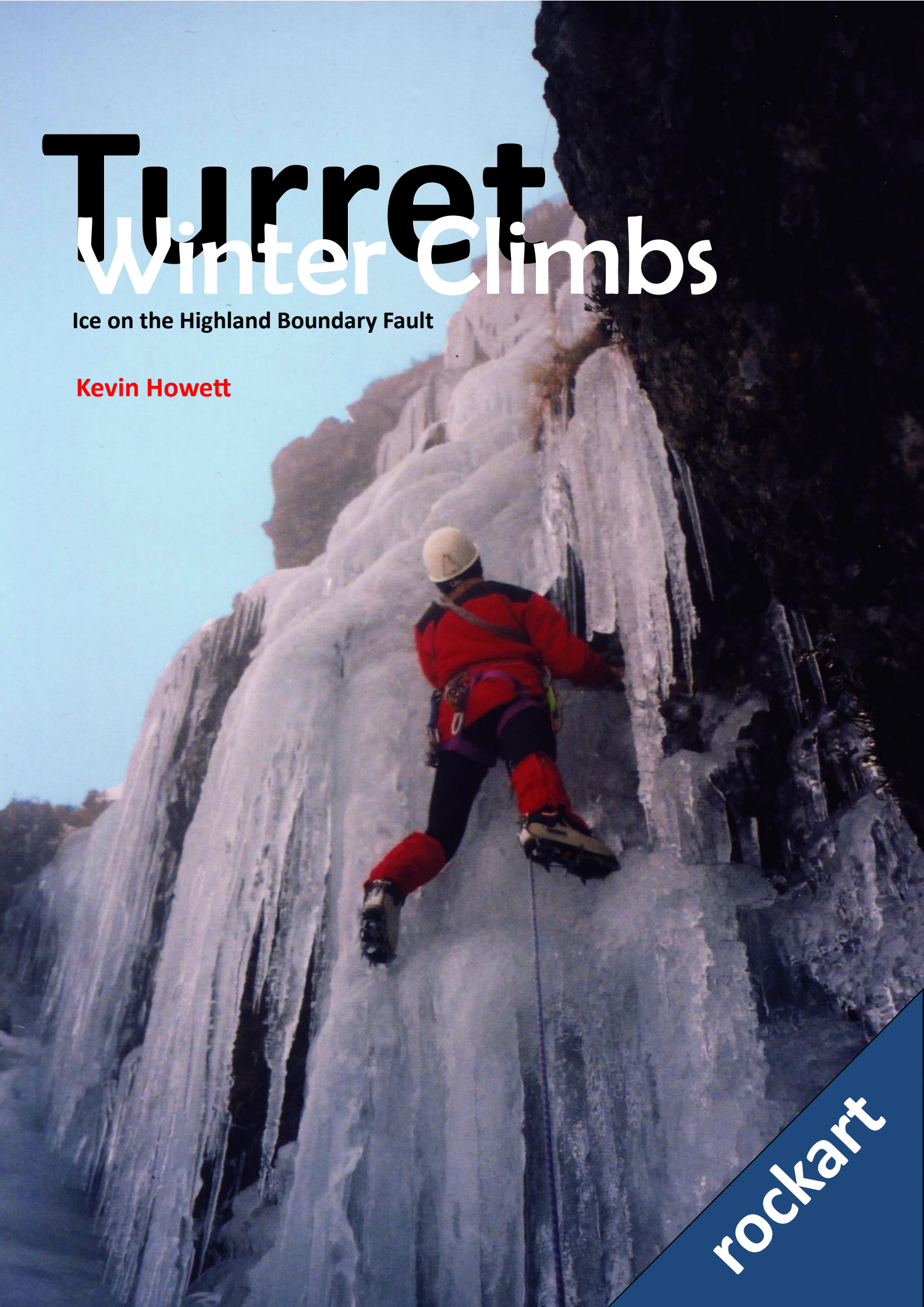


Turret

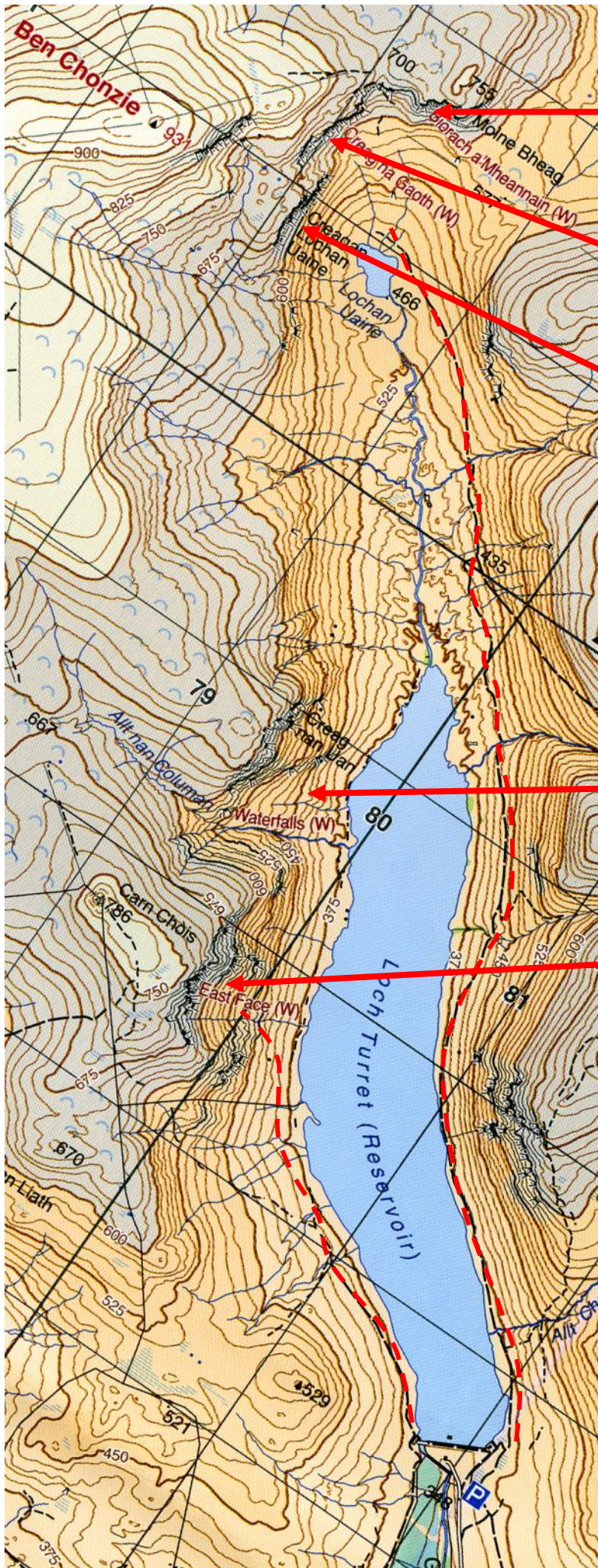
Winter Climbs

Ice on the Highland Boundary Fault

Kevin Howett



rockart



Biorach a'Mheannain

Creag na Goath

Creagan Lochan Uaine

Waterfall Gullies

Carn Chois Summit Crag

FRONT COVER: Kevin Howett on the first ascent of Seiging the Battlements (IV)

Turret Winter Climbs



INTRODUCTION

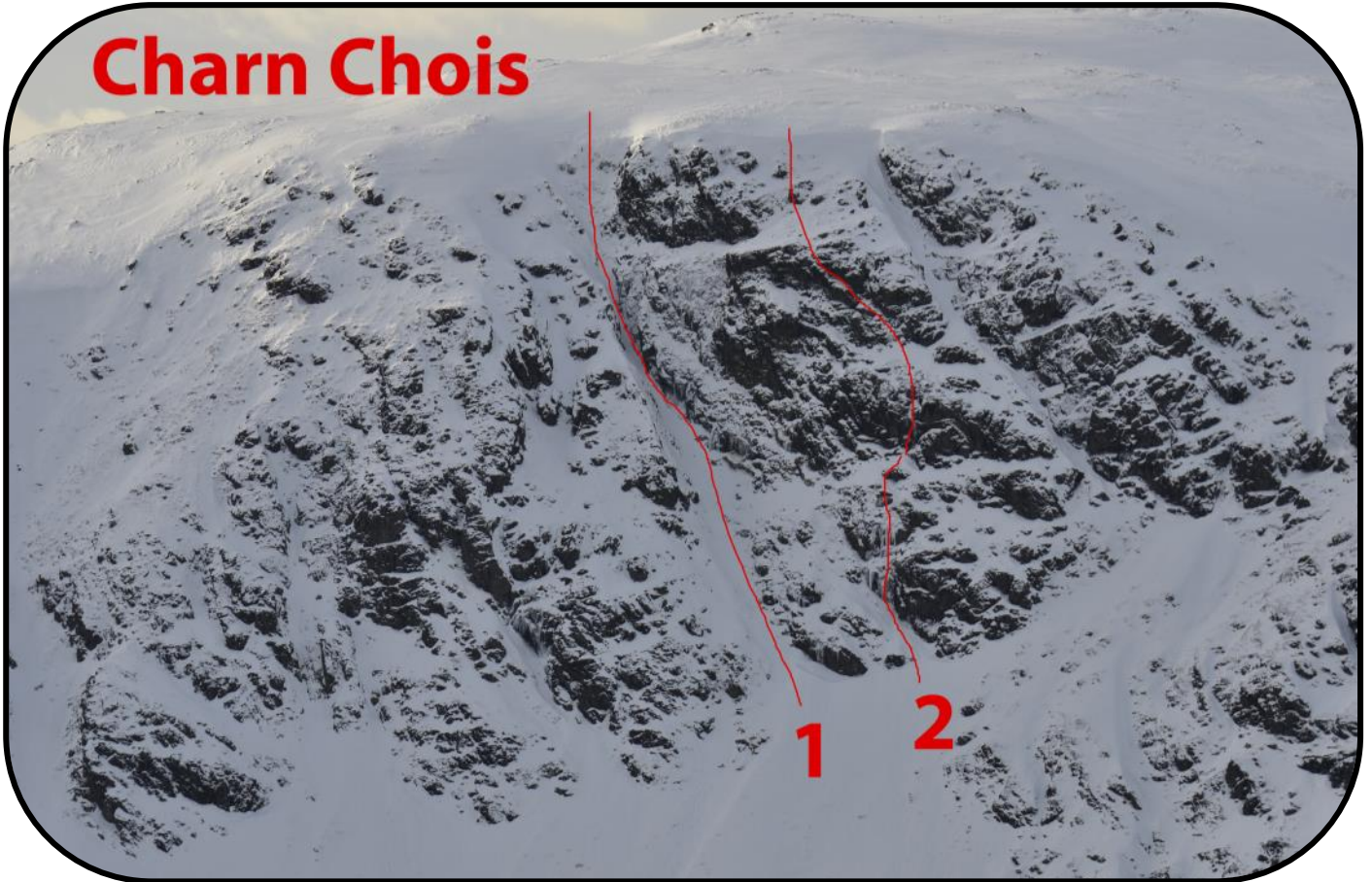
The hills above Crieff are not renowned for their huge crags and winter climbing. The dominant mountain of Beinn na Coinnich (GR 782314), otherwise erroneously known as Ben Chonzie by all and sundry including the Ordnance Survey, presents a huge rounded lump despite being a Munro. However, hidden amongst these hills are a few hidden venues for those rare periods of hard frost and heavy snow early in the season before the sun strips it away. The main crags are found in the flooded Glen Turret scattered along the length of the East face of Beinn na Coinnich and into the upper corrie.

ACCESS

A single track road leaves The Famous Grouse distillery just west of Crieff and heads past the Hydro works to gain the Turret Reservoir Dam. Tracks on either side of the loch give easy but long walk-ins.



Charn Chois



Carn Chois: Summit Crag

East Facing Alt: 600m

Carn Chois is the first hill on the immediate west side of the loch. Directly below the summit is a large broken crag composed of three distinct buttresses. A track follows the west side of the loch to end abruptly only part way there. In summer a feint boggy path continues from here up to the summit. Instead follow the loch-side and head up to the buttresses.

Summit Gully 120m II

Angus Armstrong, Kevin Howett Saturday 20th January 2001

Climb the deep slot gully in the centre of the crag that slants right to left – not visible on the approach until directly below it. Easy climbing leads into a 'v' gully and a chockstone. Pass it on the left and easy slopes to the top.

Sieging the Battlements 80m IV,5

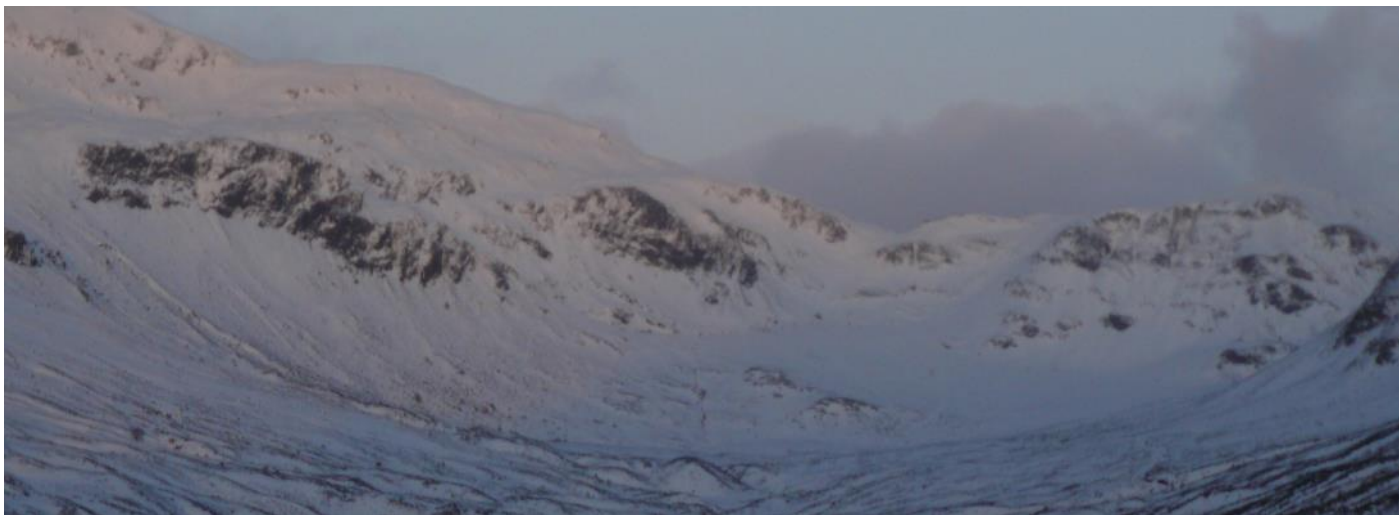
Angus Armstrong, Kevin Howett (alt) Saturday 20th January 2001

At the base of the above gully is an obvious icefall in the right wall, finishing on a ledge system below upper rocks.

1. Climb lower easy ice to a belay below the icefall.
2. Climb the steep ice to small ice ledges at half height. The vertical upper wall is split by a body-sized icicle leading to easier ground and a belay in a small outcrop.

Carn Chois Waterfall Gullies

Between Carn Chois and the cliffs in the back of the corrie are several very long gully lines which freeze up on occasion. The most prominent is the more open gully of the Alt nan Columan beyond Carn Chois however, there are other smaller deeper gullies beyond that on the flanks of Creag nan Uan.



Creagan Lochan Uaine

This is the larger of the crags in the upper corrie just above the lochan but it is unfortunately rather broken.

Creag na Gaoth

East South East Facing Alt: 675m

At the head of the Glen 1.5km past Loch Turret lies the small Lochan Uaine. The Track from the east side of the dam ends at the lochan and a feint boggy path heads up to a small col. This is the easiest route to the summit of Beinn na Coinnich from the glen. Just to the left of the small col lies Creag na Gaoth where most of the routes climbed so far can be found. It is characterised by a central section of steep walls interspersed with heather ledges, a recess at its right end containing a waterfall and a big icicle and three small gullies at the left hand side usually containing ice most winters. Routes are described from left to right.

Un-named 20m II

A Todd (solo) Saturday 6th January 2002

The furthest left icefall. Short but steep

Un-named 60m III

K Howett, A Armstrong, A Todd, Roy,

The central icefall. Easily up the lower ice to belay below the steep section left hand and main gully line. The upper fall gives continuous pitch of steepish ice.

Un-named 60m II Right hand branch

A Todd (solo) & followed by Roy, Kevin Howett, Angus Armstrong.

From below the main fall, take the appealing slim ramp/corner cutting out right, to finish up a hidden gully cutting back left.

Un-named 60m IV

K Howett, A Armstrong Thursday 3rd January 2002

The most obvious right hand ice fall of three at the left hand side of the wall.

1. 30m 5 Climb the easy lower slabby fall to underneath the vertical pillar. Climb this direct into the bay above and a large block belay.
2. 30m 3 Climb the upper fall by its left edge.

Un-named 60m IV, 4

Roy, K Howett, A Armstrong, A Todd January 2002

Climbs the slim icefall in the bay on the right of the crag containing the vertical ice pillar. Climb easy ice to under the fall. Follow the fall with a near vertical section at the top.

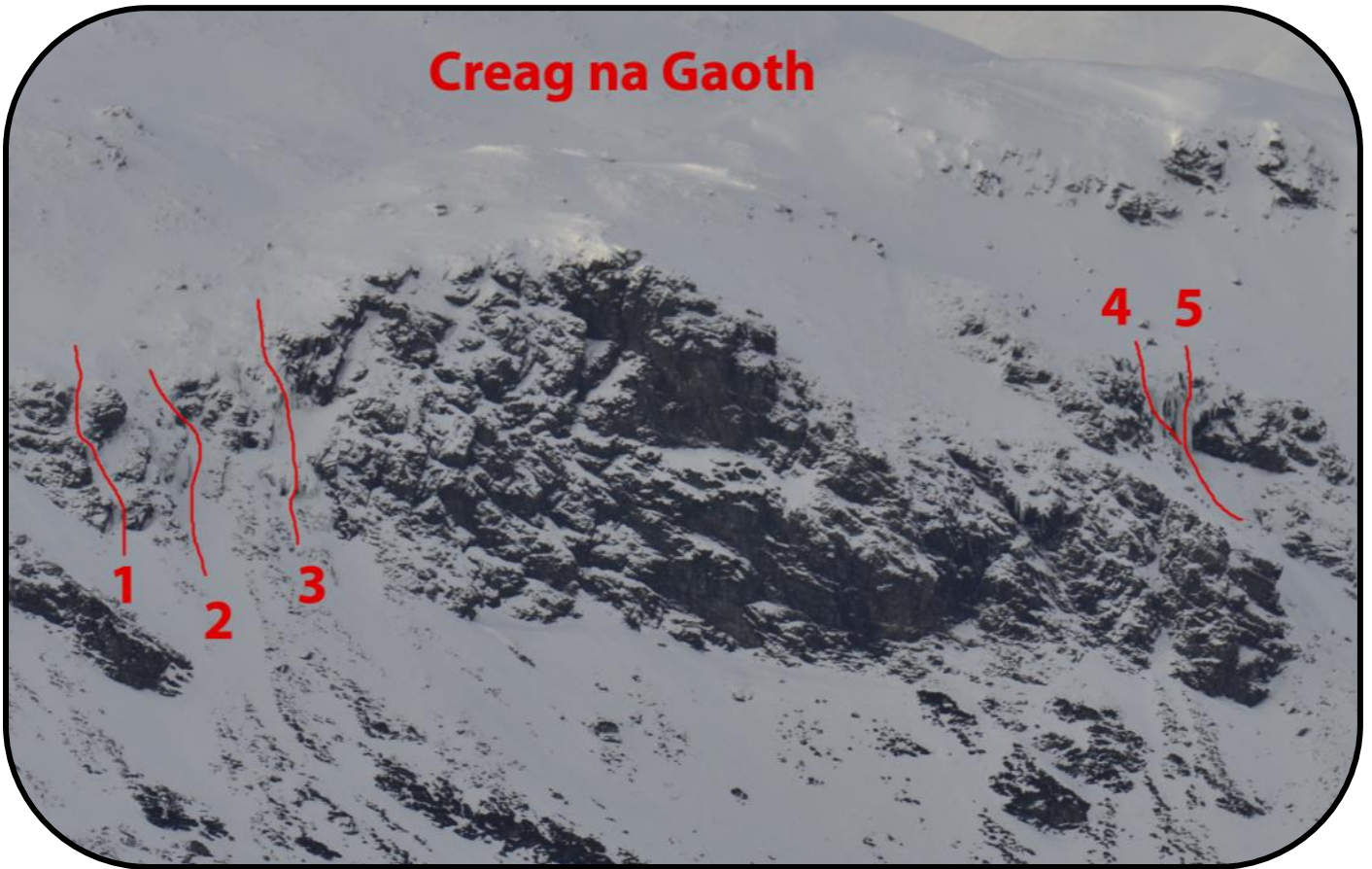
Un-named 25m V,5

A Todd, K Howett 17th January 2010

The ice Pillar direct.



Creag na Gaoth



Biorach a'Mheannain

On the right of the col are the large broken buttresses of the outlier hill sitting above the of Moine Beag. There are two distinctive vertical gullies both of which have been climbed at Grade I/II.



