



Solomon Islands sea cucumber minimum harvest, purchase and export sizes



Wet: 35 cm Dry: 15 cm



WTF White teatfish (White susu)

Holothuria fuscogilva



Wet: 25 cm Dry: 10 cm



SF Sandfish (Sanfis)

Holothuria scabra

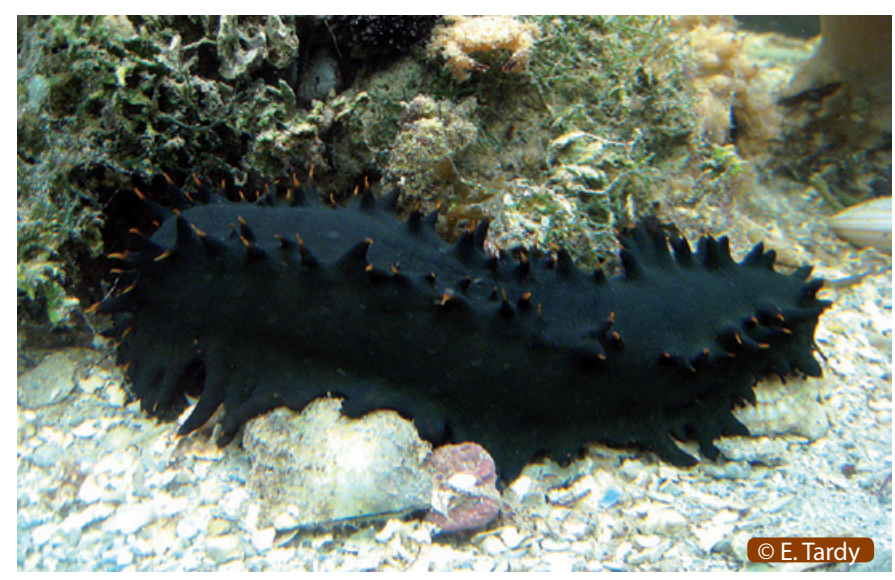


Wet: 30 cm Dry: 15 cm



BTF Black teatfish (Black susu)

Holothuria whitmaei



Wet: 20 cm Dry: 10 cm



GF Greenfish (Frenfis)

Stichopus chloronotus



Wet: 35 cm Dry: 15 cm



CF Curryfish

Stichopus hermanni

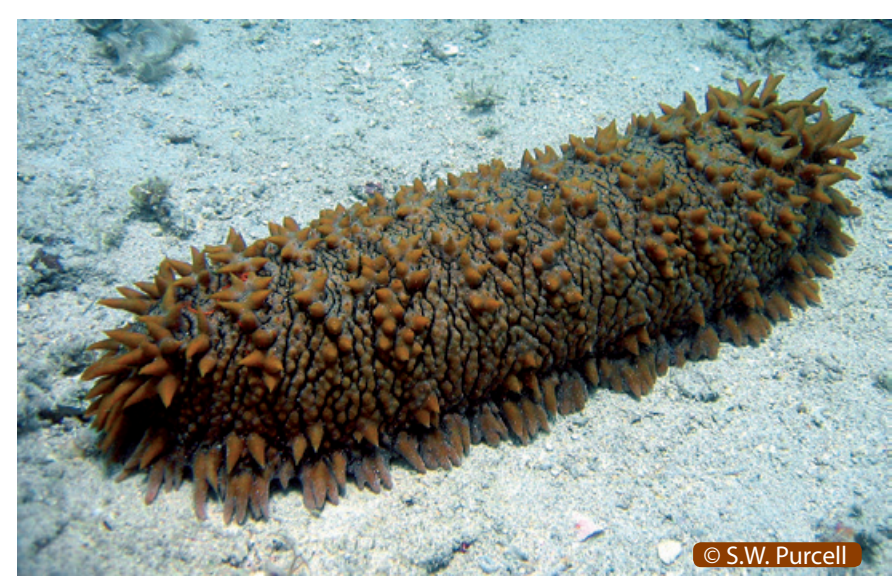


Wet: 15 cm Dry: 10 cm



PNF Peanutfish/Drangonfish

Stichopus horrens



Wet: 35 cm Dry: 15 cm



PRF Prickly redfish (Pineapplefish)

Thelenota ananas



Wet: 20 cm Dry: 10 cm



STF Stonefish

Actinopyga lecanora



Wet: 20 cm Dry: 10 cm



HBF Hairy blackfish

Actinopyga miliaris



Wet: 25 cm Dry: 10 cm



SRF Surf redfish (Surfred)

Actinopyga mauritiana



Wet: 30 cm Dry: 20 cm



SNF Snakefish

Holothuria coluber



Wet: 40 cm Dry: 20 cm



ETF Elephant Trunkfish

Holothuria fuscopunctata



Wet: 25 cm Dry: 10 cm



GSF Golden sandfish

Holothuria lessona



Wet: 25 cm Dry: 10 cm



BSF Brown sandfish

Bohadschia vitiensis

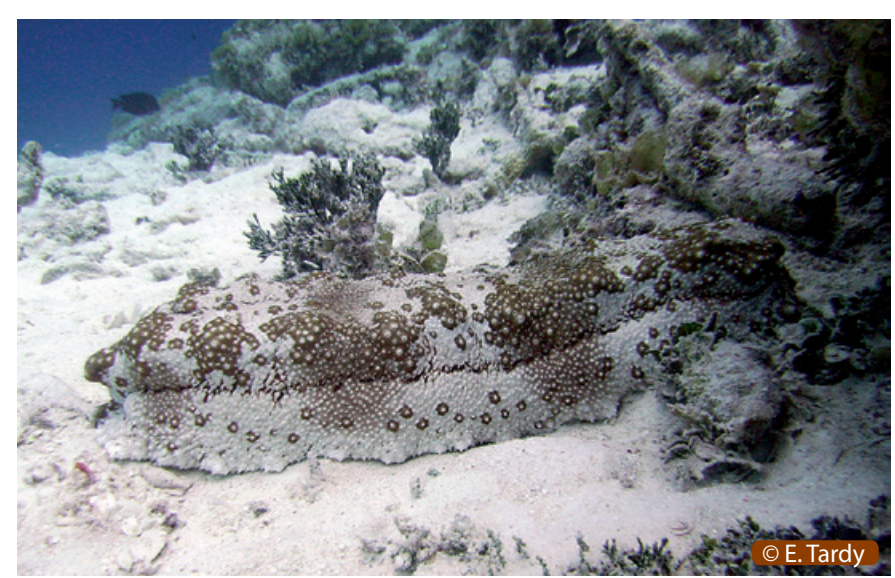


Wet: 30 cm Dry: 15 cm



TF Tigerfish/Leopardfish

Bohadschia argus

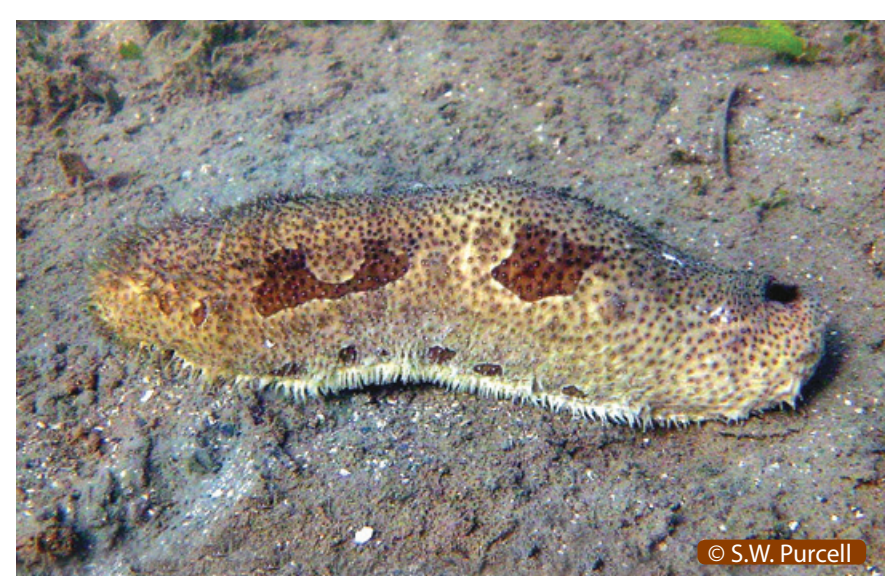


Wet: 40 cm Dry: 15 cm



AMF Amberfish

Thelenota anax



Wet: 20 cm Dry: 10 cm



CHF Chalkfish

Bohadschia marmorata

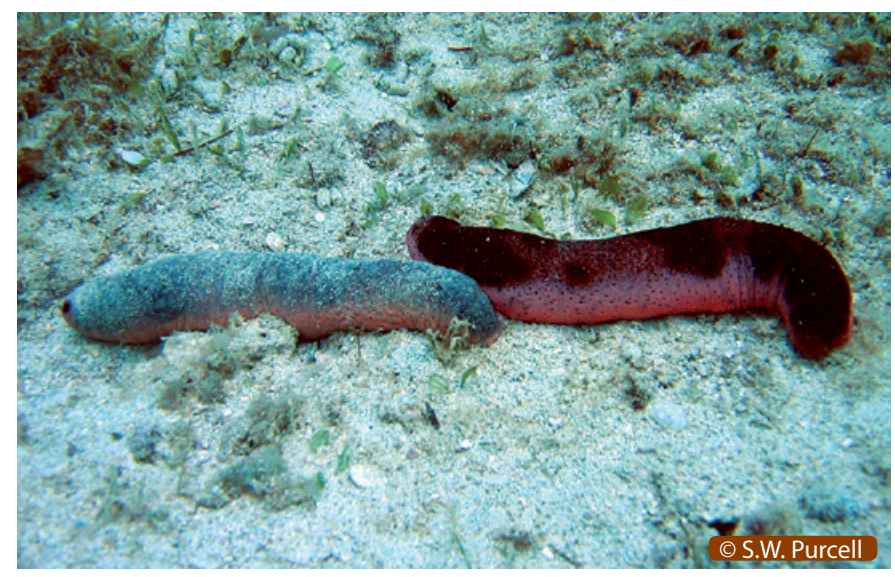


Wet: 30 cm Dry: 15 cm



LF Lollyfish

Holothuria atra



Wet: 20 cm Dry: 10 cm



PKF Pinkfish

Holothuria edulis



Wet: 20 cm Dry: 10 cm



RSNF Red snakefish

Holothuria flavomaculata



Wet: 20 cm Dry: 10 cm



WSNF White snakefish

Holothuria leucospilata



Wet: 30 cm Dry: 15 cm



FF Flowerfish/Ripplefish/Orangefish

Pearsonothuria graeffei



Wet: 20 cm Dry: 10 cm



DRF Deepwater redfish

Actinopyga echinites



Wet: 30 cm Dry: 15 cm



LMF Lemonfish/Candyfish

Thelenota rubralineata



Wet: 20 cm Dry: 10 cm



BCF Brown curryfish

Stichopus vastus

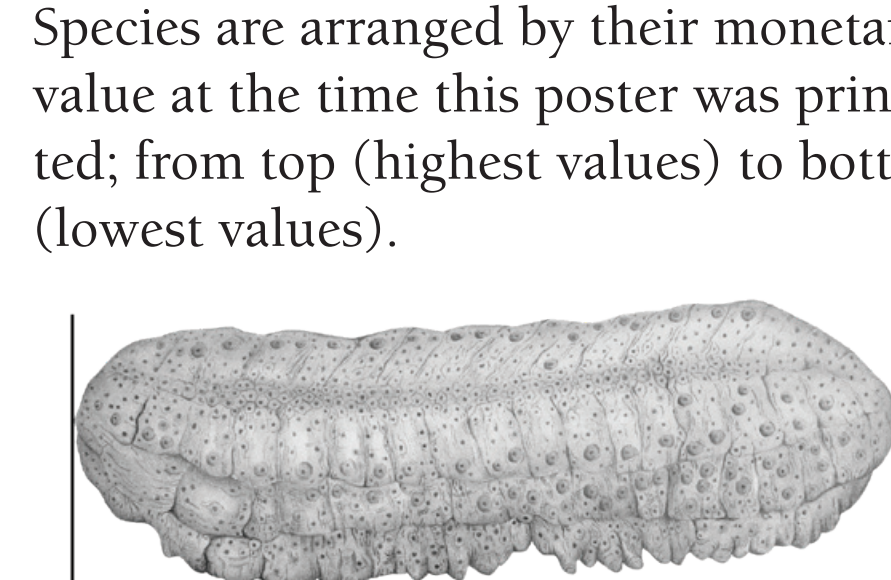


Wet: 20 cm Dry: 10 cm

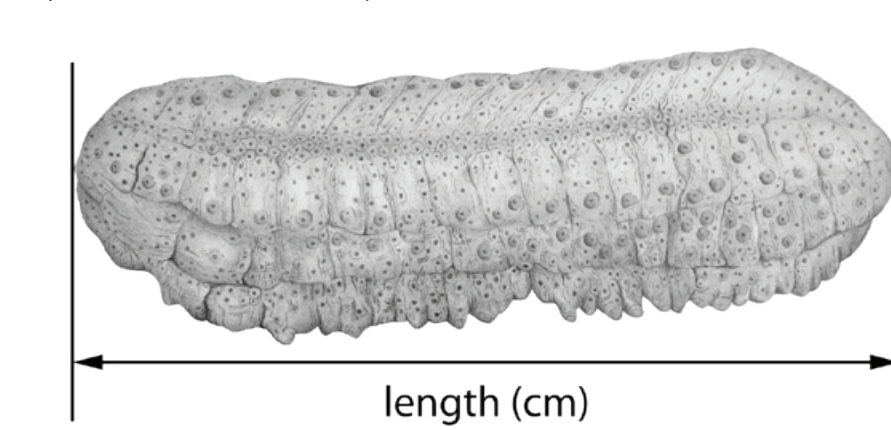


DWBF Deepwater blackfish

Actinopyga palauensis



Species are arranged by their monetary value at the time this poster was printed; from top (highest values) to bottom (lowest values).



Minimum benchmark buying prices are given for quality grade (A), (B) or (C), large (L) or small (S) and processed (P).

