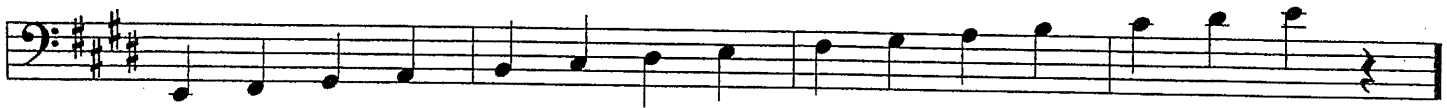


2019 ILMEA District III String Auditions

Monday October 14, 2019
Bloomington High School

- Auditions will be blind
- District III string auditions will include:
 - **Scales:** CM, GM, DM, AM, EM, FM, BbM, g melodic minor, c melodic minor
 - All scales will be performed both ascending and descending
 - Scales are to be performed at 120 bpm with detached bowings
 - Violins, violas and cellos are to perform all scales three octaves
 - Basses are to perform all scales two octaves
 - Scales do NOT need to be performed from memory
 - **State required excerpt:** Mozart
 - **District III required excerpts:** *Die Meistersinger Overture* – Wagner
 - Violins will prepare SEVEN required excerpts chosen from the 1st and 2nd violin parts – excerpts are numbered and bracketed
 - Violas, cellos, and basses will prepare their part for the overture in its entirety – judges will decide which excerpts will be heard the day of the audition
 - **Sight reading excerpt:**
 - Students will be given between 20-60 seconds to *silently* look over the excerpt (time limit determined by judge – will be the same for all participants in that room)
 - Appropriate tempo will be given by the judge
 - Examples from previous years can be found at <https://www.ilmea.org/orchestra-audition-procedures>
- Students are highly encouraged to listen to recordings of both the state and district required excerpts for ideas on proper tempo, style, etc.
- Harp audition information can be found at <https://www.ilmea.org/orchestra-audition-process>

STRING BASS



To be performed both ascending & descending Minimum tempo : Quarter note = 120 Detached bowing

2019-2020 Set: Mozart

Bass

Symphony No.40, Mvt.1, mm.114-138

114

120

126

131

134

Viol. I

Viol. II

Note: There is NOT a state approved bowing. Also, you are encouraged to listen to multiple recordings to get a sense of the appropriate range of tempi for this excerpt.

Vorspiel zur Oper Die Meistersinger von Nürnberg

Sehr gehalten
(*Molto tenuto*)
sehr kräftig
(*molto vigoroso*)

CONTRABASSO

Richard Wagner

8

17

23

30

44

52

58

67

77

87

f

ff

meno f

piu p

dolce piu p pp

f

f

f

sehr gehalten (molto tenuto)

immer ff (sempre ff)

immer ff (sempre ff)

Bewegt, doch immer noch etwas breit (Con moto ma sempre poco largamente)

f

p < f

p < f

pizz.

p

CONTRABASSO

E Mässig im Hauptzeitmass
(Nel movimento ma moderato)

97 **6** pizz. arco
p *p cresc.* *f* *p*

109 pizz. arco
cresc. *f* *p* *f* *p*

Noch bewegter
(Ancora più animato)

115 arco
cresc. *piu cresc.* *molto cresc.*

G Im mässigen Hauptzeitmass
(Nel movimento ma moderato)

122 **2** pizz. **7** **3** arco
ff *p* *f* *f dim.*

138 pizz. **5** pizz. **6** **H** *Tromb. **2**
p *p* *ff*

J aber sehr markiert
(ma molto marcato)

158 *mf*

allmählig immer stärker
(poco a poco più di forza)

164

nicht sehr gebunden, aber
(non legato, ma molto)

169 *tr* *f* **K**
marcato

sehr gehalten
(sostenuto)

175 *piu f*

180 *ff*

CONTRABASSO

185 *e piu f* *ff* *L*

189

193 *Sehr gewichtig*
M (Molto pesante)
stacc.
immer ff
(sempre ff)

197

199

201 *piu f*

203 *ff*

206 *ff*

212 *ff*

219

Fine.