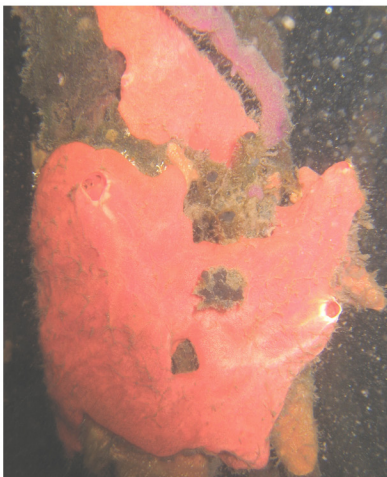
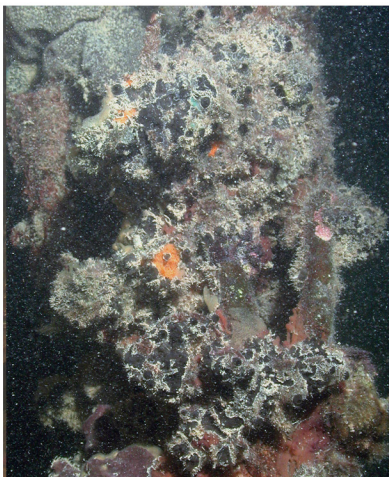


Mangrove Sponges of Bocas del Toro, Panama (Page 2)

By Cristina Diaz, Kate Smith, and Rachel Collin (2004)



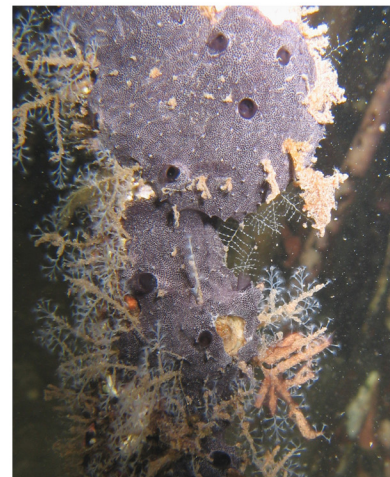
Mycale (Paresperella) sp.
Bright red with white oscular membranes



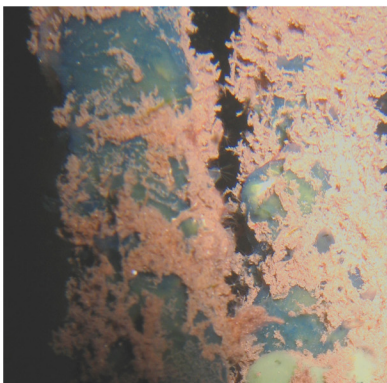
Spongia tubulifera
Massive, tubular projections bear oscules



Mycale magniraphidiphera
Pink to blue, radial canals around oscules



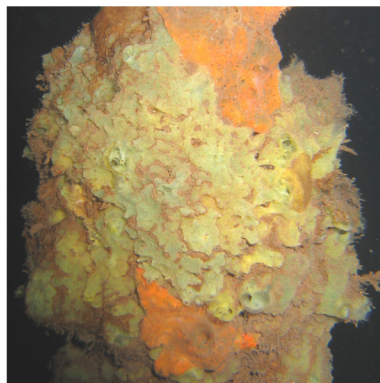
Chelonaplysilla erecta
Soft, spiky thin crust, black-purple, rare



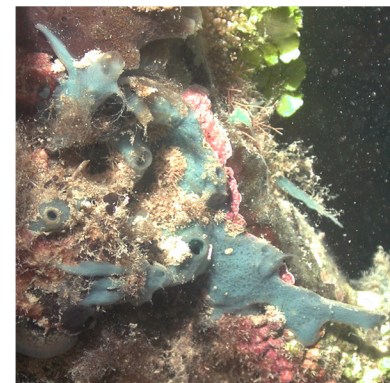
Terpios manglaris
Thin crust, dark blue, rare



Mycale angulosa
Thick encrusting to ramose, rose to gray, rare



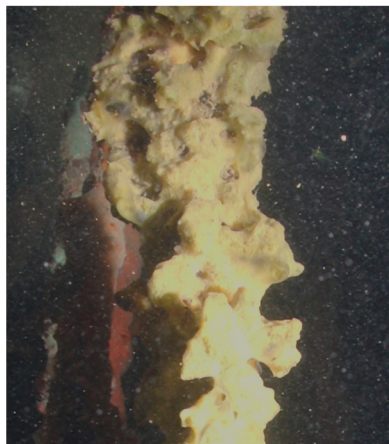
Halichondria magniconulosa
Corrugated lobes, yellow, greenish, rare



Haliclona vermeuleni
Smooth with tubular digitate outgrowths



Desmapsamma anchorata
Thin branching, smooth, typically salmon



Biemna sp.
Light yellow, thick cushions, soft, common



Clathria venosa
Slippery surface, radial canals around oscules



Clathria microchelus
Gray to bluish, porous surface, rare



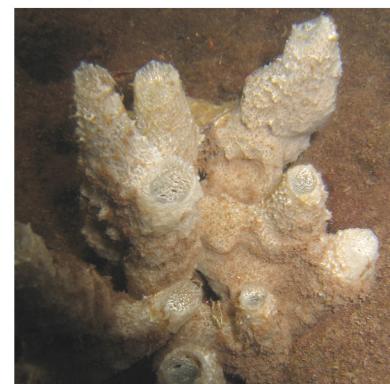
Spirastrella mollis
Wide canals, leathery surface, rare



Tethya aff. seychellensis
Round (2-4 cm) purple-red with buds



Mycale citrina
Thick crusts, yellow greenish, rare



Haliclona mucifibrosa
On mangrove peat. Stringy, thick mucous

Produced with support from the Smithsonian's Marine Science Network and the Smithsonian's Women's Committee

Bocas Research Station, Smithsonian Tropical Research Institute, Unit 0948, APO AA 34002, USA

March 2004