

Figure 5-1. Life cycle of *Olpidium viciae*. Redrawn from Kusano (1912). *J. Coll. Agr. Tokyo Imp. Univ.* 4:141-199.

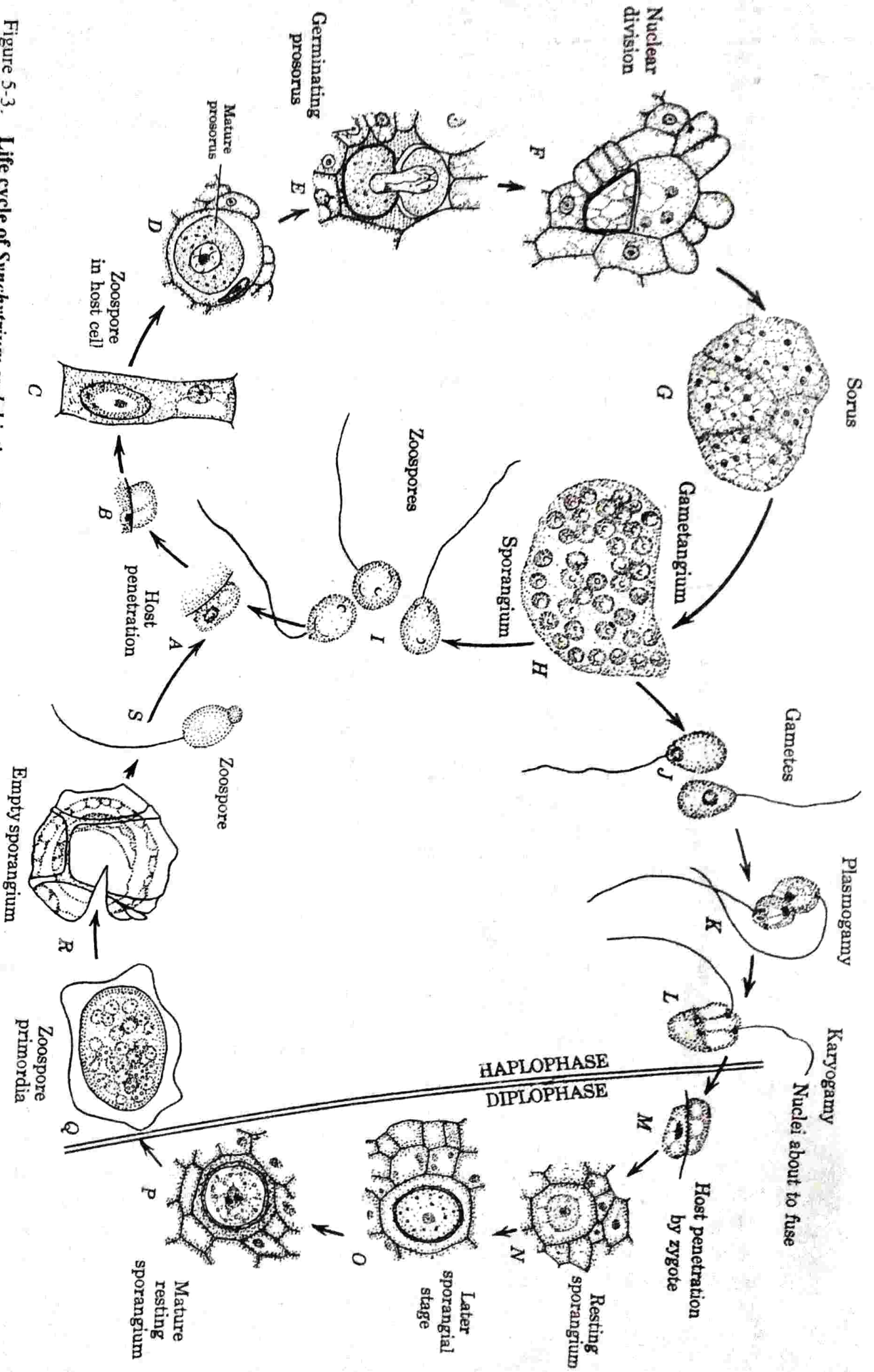


Figure 5-3. Life cycle of *Synchytrium endobioticum*. Redrawn from Curtis (1921). *Phil. Trans. Roy. Soc. London*, B210:409-478 by permission of the Royal Society of London.

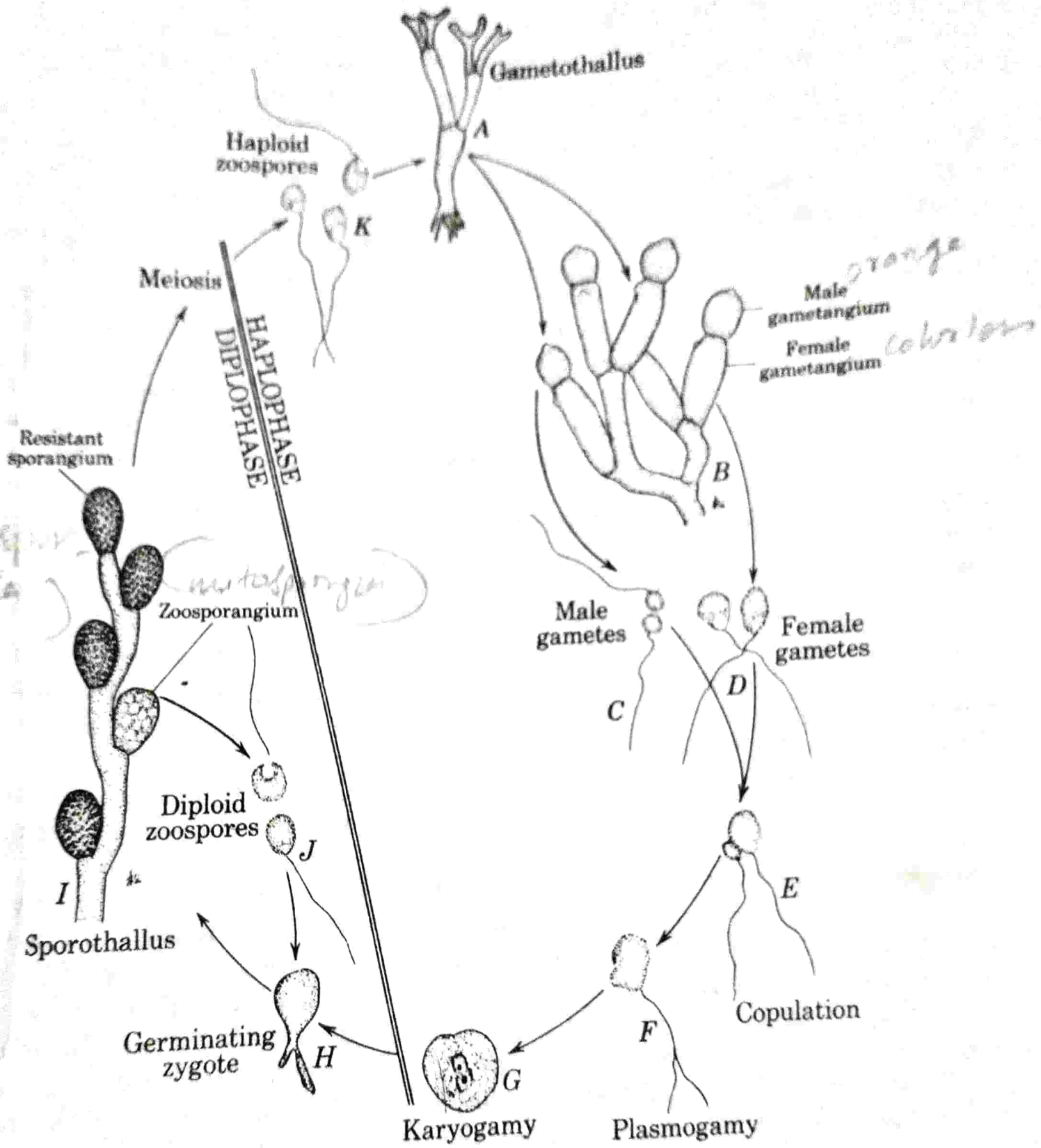


Figure 5-11. Life cycle of *Allomyces macrogynus*. A, H, redrawn from Emerson (1941). *Lloydia* 4:77-144. E, F, constructed; G, redrawn from (Hatch), 1938. *Ann. Bot. n.s.* 2:586-614.

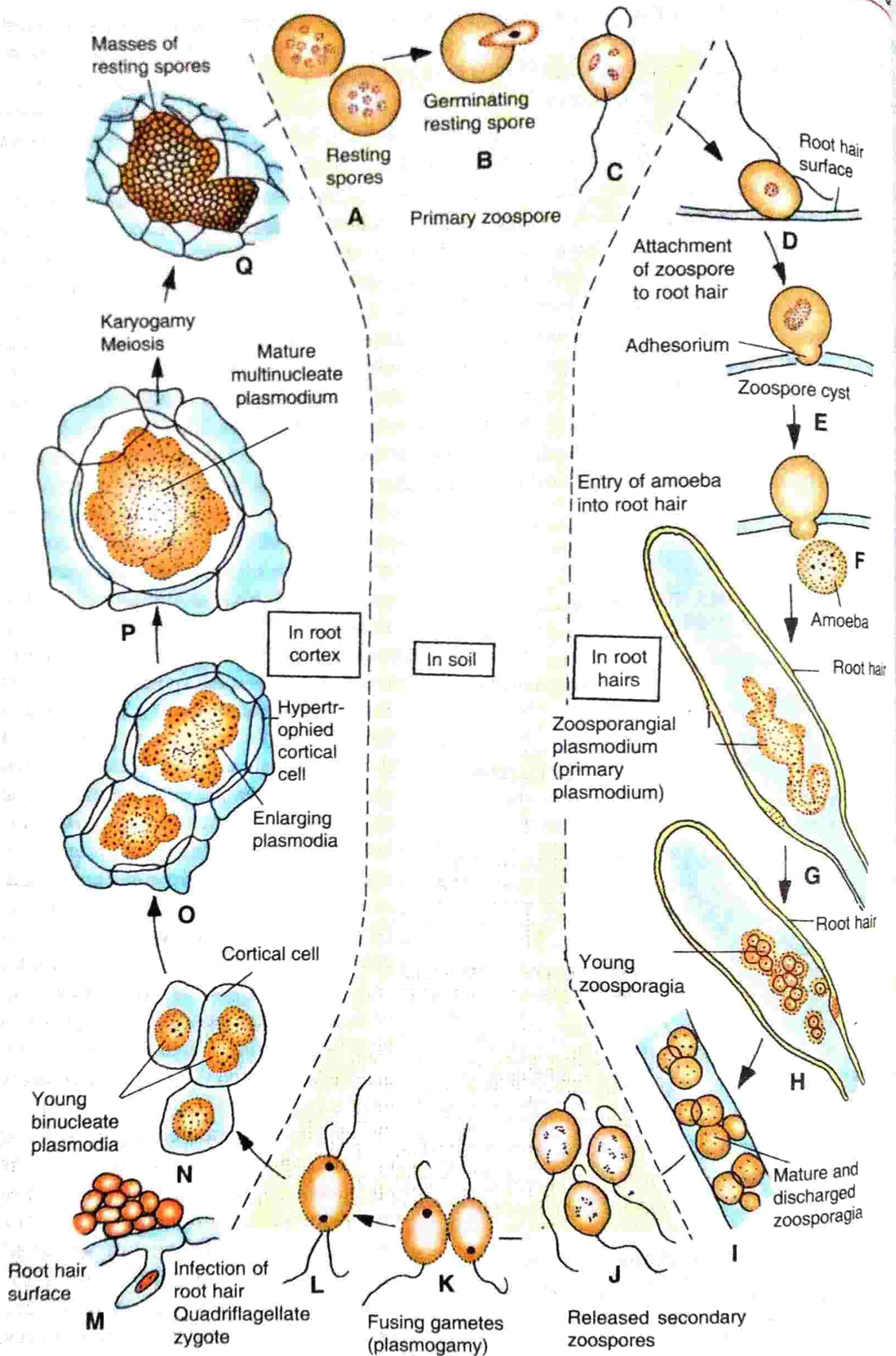


Fig. 5.8. Pictorial diagram of the life cycle of *Plasmodiophora brassicae*.

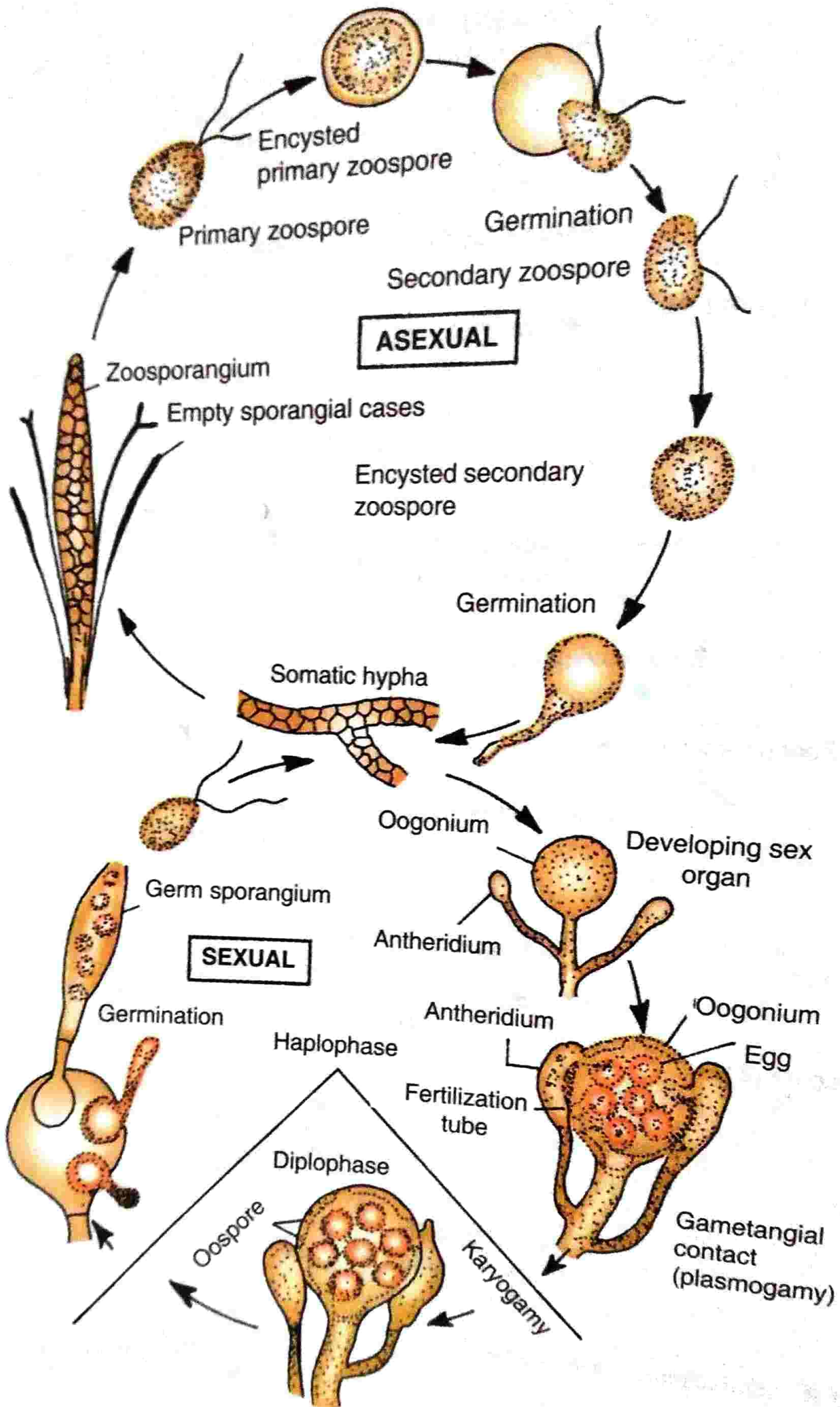


Fig. 6.9 Pictorial life cycle of *Saprolegnia*.

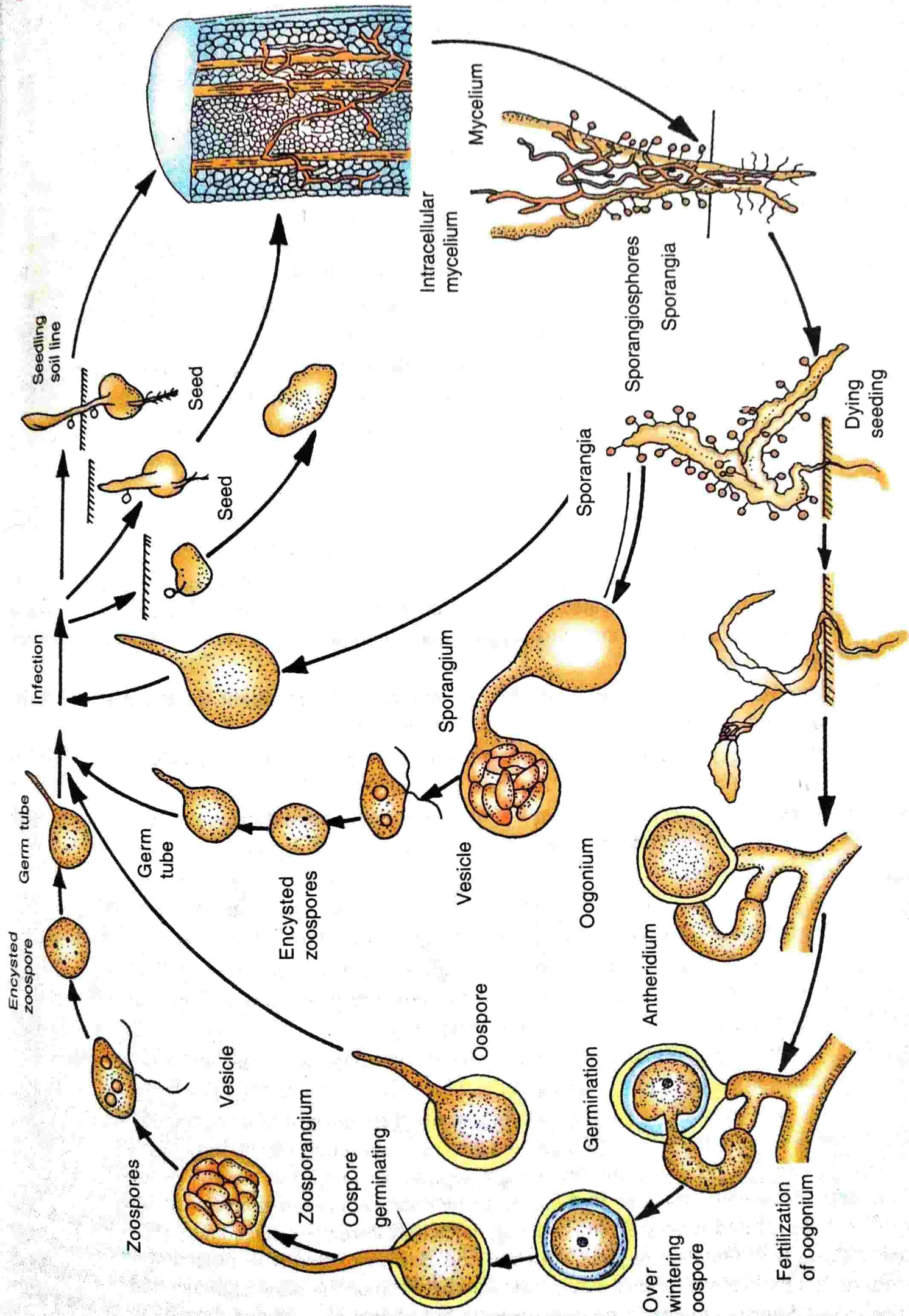


Fig. 6.26. Pictorial diagram of life-cycle of *P. debaryanum*.

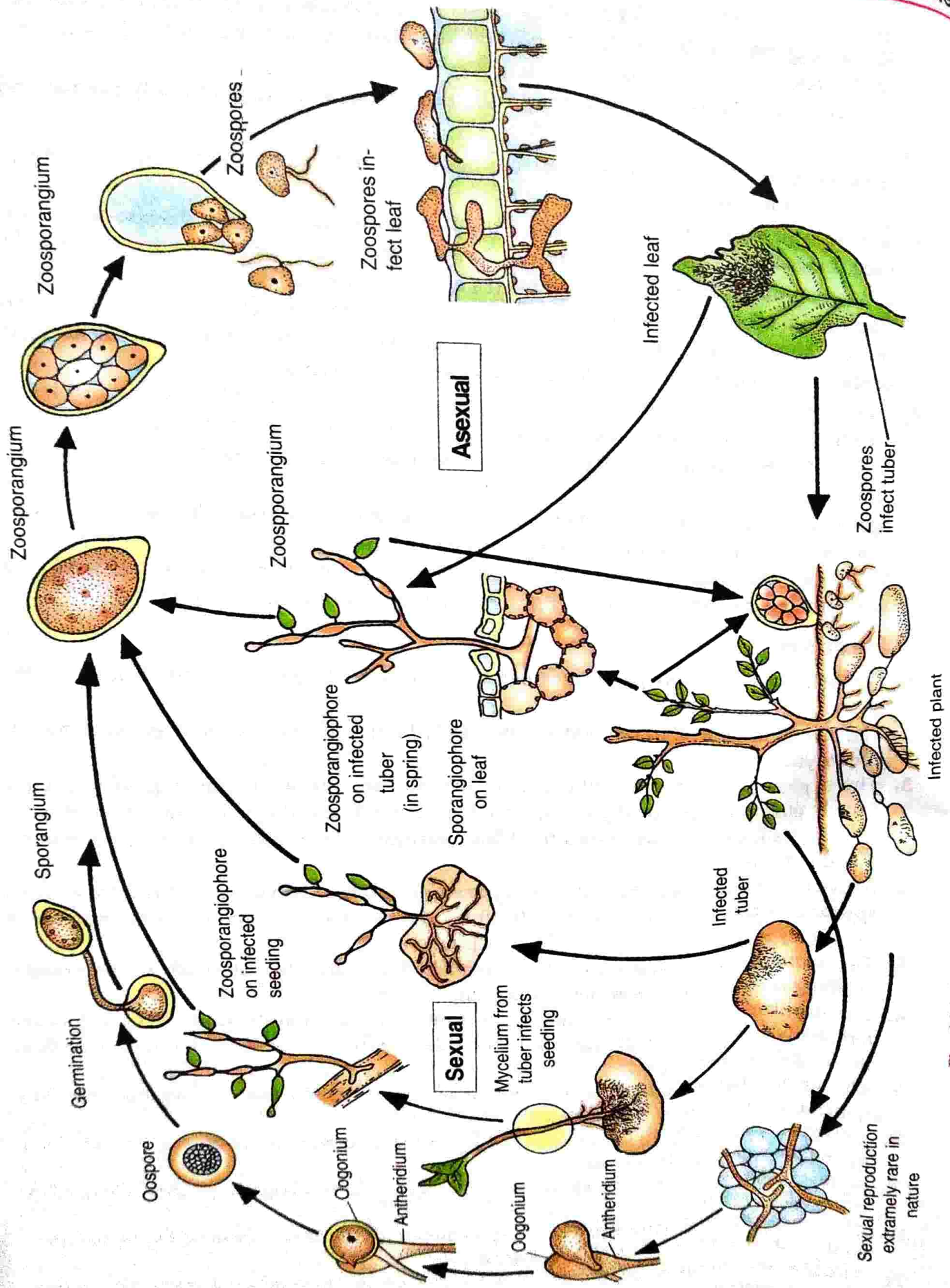


Fig. 6.34. Pictorial Disease cycle of late blight disease of potato caused by *Phytophthora infestans*.

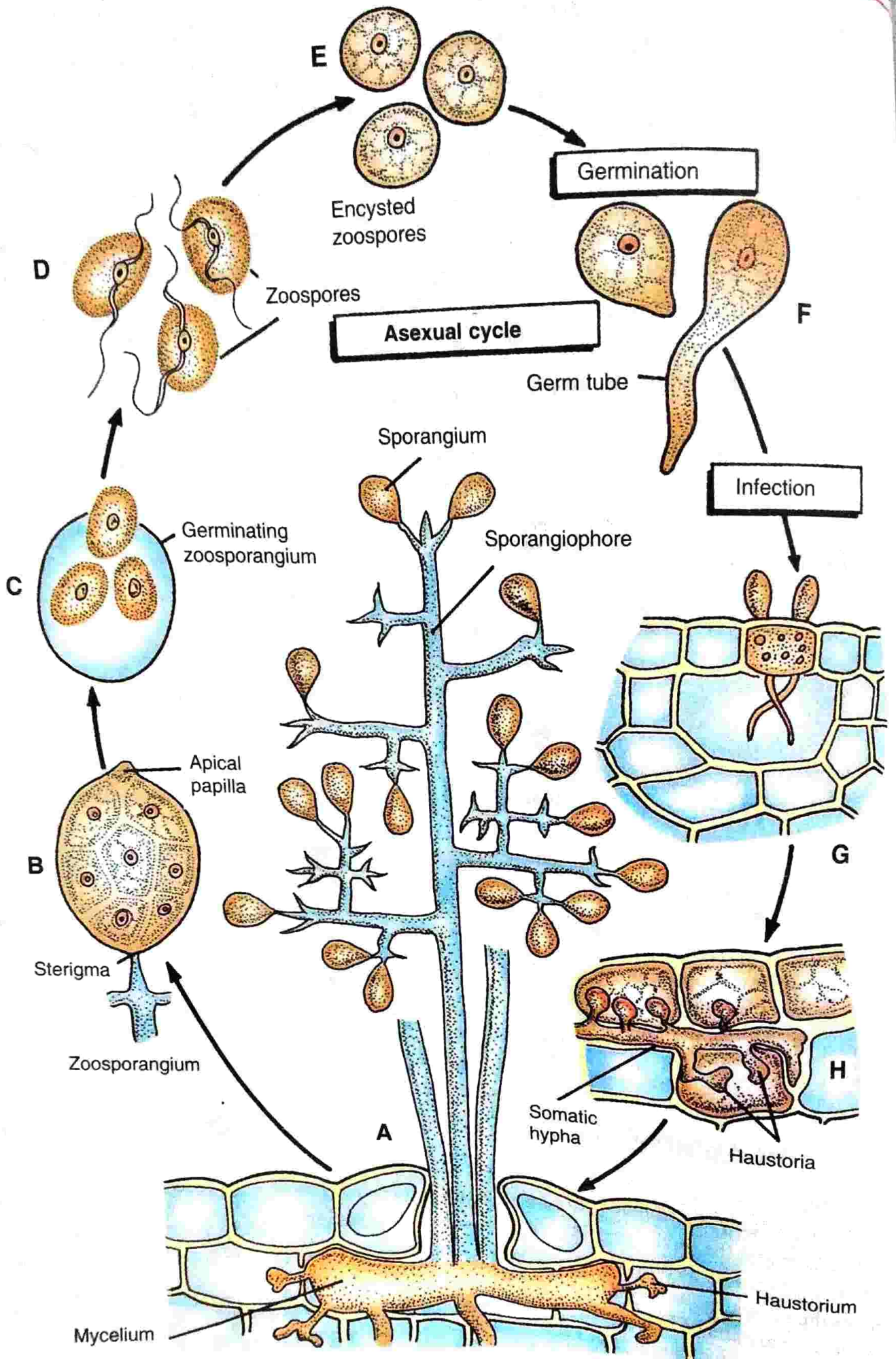


Fig. 6.36 (A-H). Illustrated asexual cycle of *Plasmopora viticola*. A, Sporangiphore with zoosporangia; B, Differentiation of zoospores; C, Germination of zoosporangium; D, Zoospores; E, Encysted zoospores; F, Germination of encysted zoospores; G, Stomatal penetration by the germ tube; H, Intercellular mycelium and the haustoria.

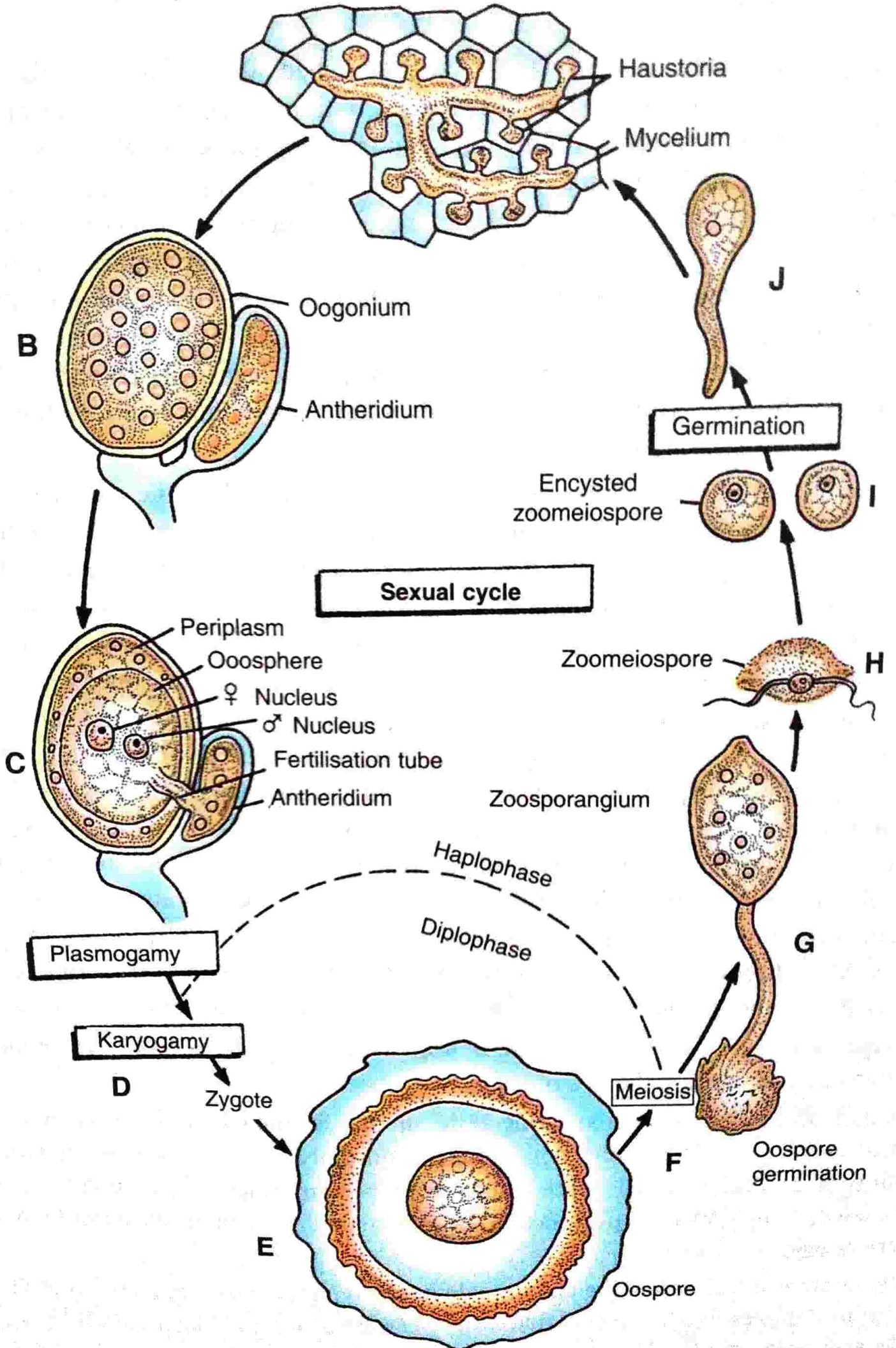


Fig. 6.37 (A-J). Illustrated sexual cycle of *Plasmopara viticola* with zygotic meiosis.

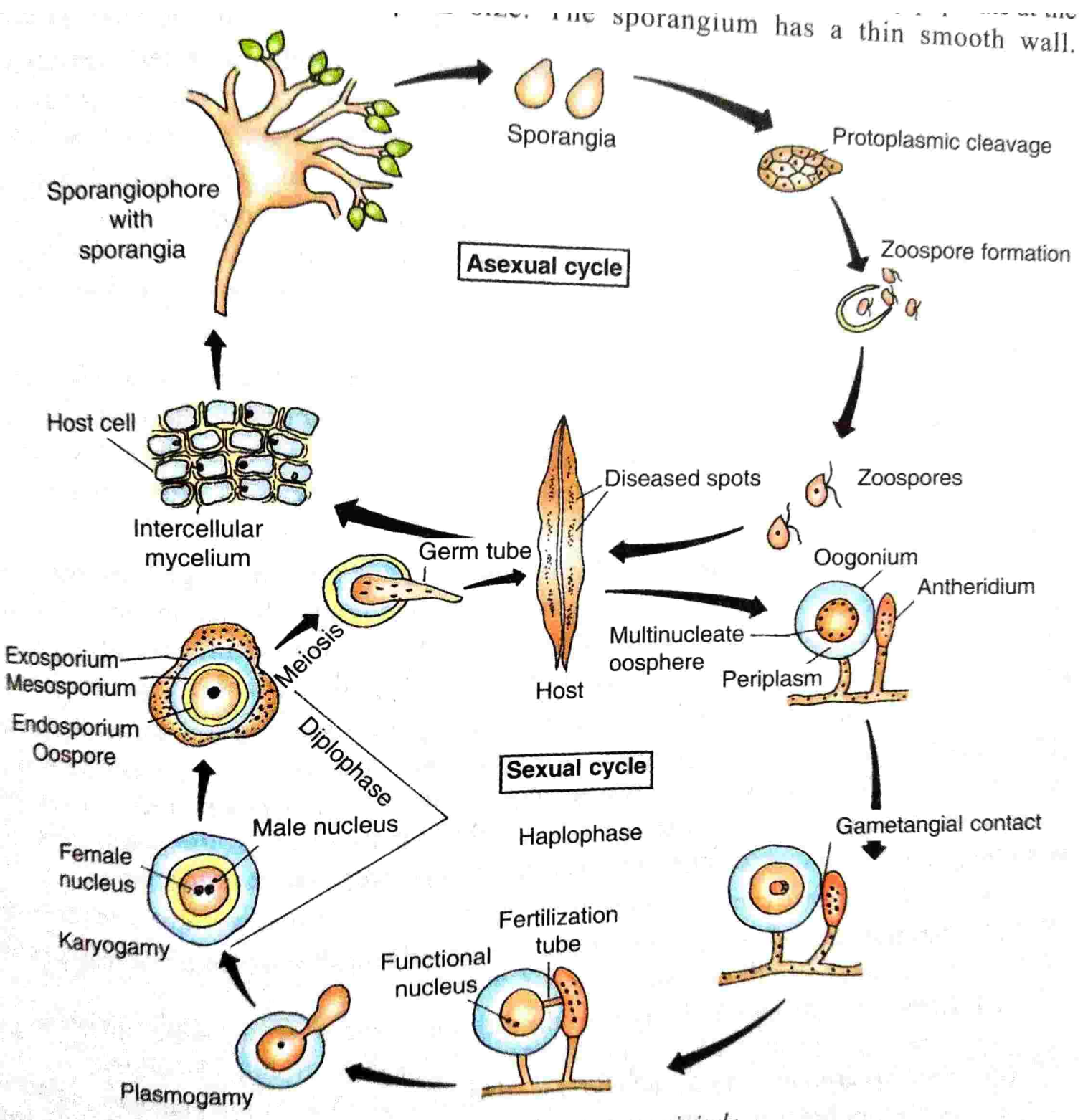


Fig. 6.47. Life cycle of *Sclerospora graminicola*