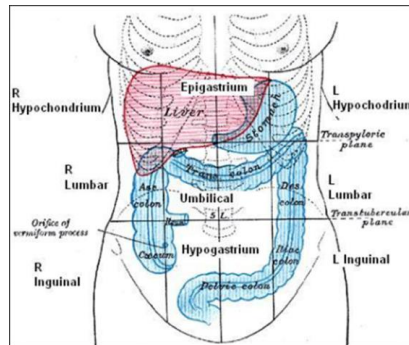


EPIGASTRIC / EPIGASTRIUM

The abdomen is divided into nine regions, by imaginary planes, two horizontal and two sagittal.



Horizontal Planes:

- (1) Upper transverse = **transpyloric plane** (halfway between the jugular notch and the upper border of the symphysis pubis)
 - this indicates the margin of the transpyloric plane, which in most cases cuts through the pylorus.
- (2) Lower transverse = **transumbilical plane** (midway between the upper transverse and the upper border of the symphysis pubis)
 - it corresponds to that passing through the iliac tubercles

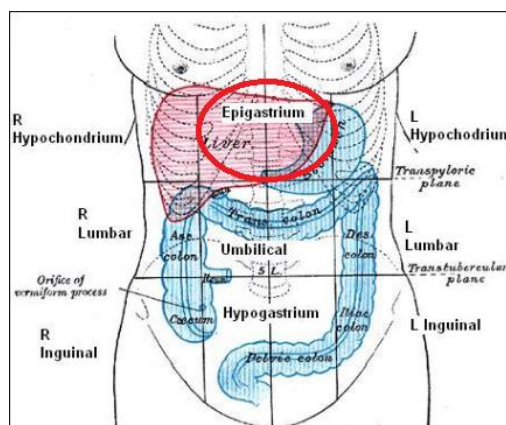
By means of these horizontal planes the abdomen is divided into **three zones** named from above: **subcostal, umbilical, and hypogastric zones.**

Sagittal Planes:

Each of the three zones is further subdivided into **three regions** by the **two sagittal planes**, which are indicated on the surface by a right and a left lateral line drawn vertically through points halfway between the anterior superior iliac spines and the middle line:

- (1) Upper zone: middle region = **epigastric** & two lateral regions = **right** and **left hypochondriac**
- (2) Middle zone: central region = **umbilical** & the two lateral regions = **right** and **left lumbar**
- (3) Lower zone: middle region = **hypogastric** or **pubic** & two lateral = **right** and **left iliac** or **inguinal**

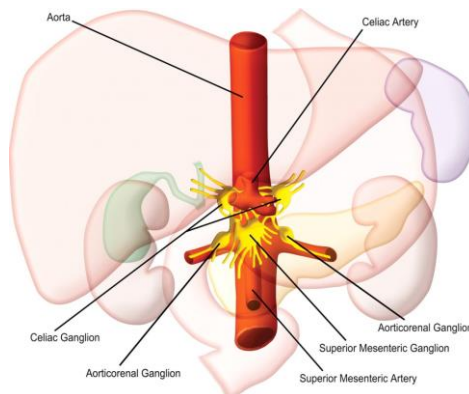
IN SUMMARY – the epigastric or epigastrium is the middle region in the upper zone of the abdomen:



SOLAR PLEXUS

The Celiac Plexus (Plexus Coeliacus; Solar Plexus):

The **celiac plexus**, the largest of the three sympathetic plexuses, is situated at the level of the upper part of the first lumbar vertebra and is composed of two large ganglia, the **celiac ganglia**, and a dense net-work of nerve fibers uniting them together. It surrounds the **celiac artery** and the root of the superior mesenteric artery. **It lies behind the stomach and the omental bursa, in front of the crura of the diaphragm and the commencement of the abdominal aorta, and between the suprarenal glands.**



SUMMARY Solar Plexus lies at the centre, within the epigastrium at the inferior edge, just about the upper transverse line.

