

# AMERICAN IRON WORKS

## 2019 PRODUCT CATALOGUE



CANADIAN DISTRIBUTOR



**OILSITE  
PRODUCTS**

**CALGARY**

403-219-0255

**CLAIRMONT**

780-567-2398

**EDMONTON**

780-436-3400

**RED DEER**

403-341-4417

**REDCLIFF**

403-526-3321

TOLL FREE: 1-800-222-6448

[contactus@topcoilsite.com](mailto:contactus@topcoilsite.com)

[www.topcoilsite.com](http://www.topcoilsite.com)

# CONTENTS

- HOBBLE CLAMPS ..... 1-4**
- HOBBLE SYSTEMS ..... 5**
  - HOBBLE CLAMP X ANCHOR PLATE ..... 6
    - CABLE ..... 6
    - CHAIN ..... 6
  - HOBBLE CLAMP X HOBBLE CLAMP ..... 6
    - CABLE ..... 6
    - CHAIN ..... 6
- HINGE HOBBLES ..... 7**
- PIPE CLAMPS ..... 8, 9**
- LIFTING CLAMPS ..... 8, 9**
- RED IRON RESTRAINTS ..... 10-13**
  - RED IRON CHOKERS ..... 14
- WHIP STOPS ..... 15-17**
- CABLE CHOKERS ..... 18-20**
- NYLON CHOKERS ..... 21-23**
- WHIP CHECKS ..... 24**

# HOBBLE CLAMPS

At American Iron Works we design and fabricate Hobble Clamps and Systems for high pressure hoses and pipes for the Oilfield Industry.

Hobble Clamps are used to secure ends of high pressure hydraulic hoses, and guard against accidents in the event of failure at the hose connection.

All of our Hobble Clamps are manufactured in Oklahoma and are made of high quality material.

API Standards require a minimum breaking strength of 16,000 pounds for rotary hose safety clamps. We have done extensive testing on our Hobble Clamps to assure that they meet the strict API Standards.

When ordering Hobble Clamps, please specify the outside diameter (O.D.) of your pipe or hose and maximum working pressure (PSI).

## HOBBLE CLAMP STYLES

**2 BOLT SINGLE EAR (2BSE)**



**2 BOLT DOUBLE EAR (2BDE)**



**4 BOLT SINGLE EAR (4BSE)**



**4 BOLT DOUBLE EAR (2BDE)**



# HOBBLE CLAMP – 2 BOLT STYLE

| O.D. SIZE   | WEIGHT (LBS) |  | O.D. SIZE   | WEIGHT |
|-------------|--------------|--|-------------|--------|
| 1" 2BDE     | 1.75         |  | 4" 2BSE     | 5.95   |
| 1.25" 2BDE  | 1.9          |  | 4" 2BDE     | 6.35   |
| 1.5" 2BDE   | 1.95         |  | 4.5" 2BSE   | 11.4   |
| 1.96" 2BSE  | 4.35         |  | 4.5" 2BDE   | 12.2   |
| 1.96" 2BDE  | 4.65         |  | 5" 2BSE     | 12.3   |
| 2.375" 2BSE | 4.8          |  | 5" 2BDE     | 13.1   |
| 2.375" 2BDE | 5.45         |  | 5.5" 2BSE   | 12.5   |
| 2.625" 2BSE | 5            |  | 5.5" 2BDE   | 13.3   |
| 2.625" 2BDE | 5.45         |  | 6.25" 2BSE  | 13.45  |
| 3" 2BSE     | 5.15         |  | 6.25" 2BDE  | 14.25  |
| 3" 2BDE     | 5.6          |  | 6.25" 2BSE  | 14.5   |
| 3.5" 2BSE   | 5.6          |  | 6.625" 2BDE | 15.35  |
| 3.5" 2BDE   | 6.1          |  |             |        |

# HOBBLE CLAMP – 4 BOLT STYLE

| O.D. SIZE   | WEIGHT (LBS) |  | O.D. SIZE   | WEIGHT (LBS) |
|-------------|--------------|--|-------------|--------------|
| 2.375" 4BDE | 9.2          |  | 5.5" 4BDE   | 18.75        |
| 2.625" 4BDE | 8.9          |  | 6.25" 4BSE  | 18.8         |
| 3.5" 4BDE   | 10.2         |  | 6.625" 4BSE | 18.8         |
| 4.5" 4BSE   | 15.45        |  | 7.25" 4BSE  | 20.02        |
| 5" 4BSE     | 16.55        |  | 8" 4BSE     | 22.35        |
| 5.5" 4BSE   | 17.25        |  |             |              |

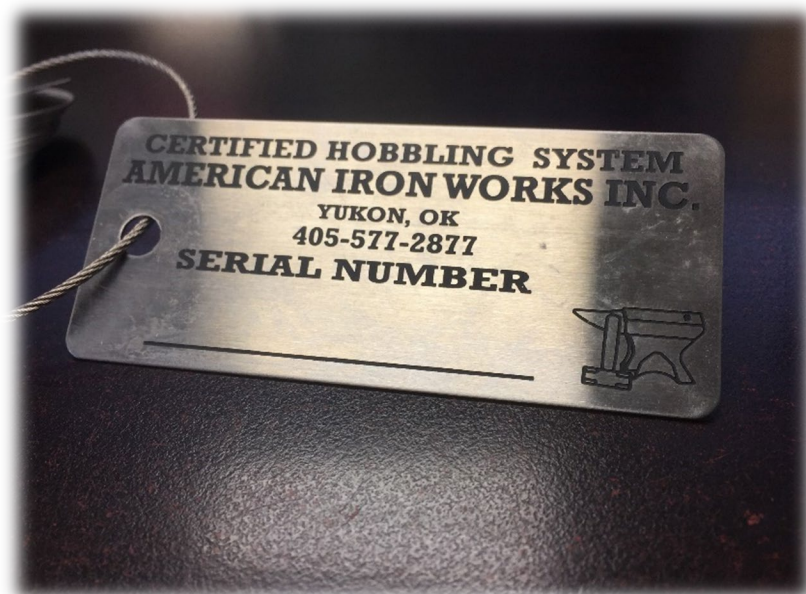
## HOBBLE CLAMP SYSTEMS

We offer many combinations of our Hobble Clamp Systems for securing pipes and hoses.

We use only Grade 8 Alloy Chain and Grade 8 Alloy Connectors. We also offer Pull Tested Cable System Certificates. All of our Hobble Systems come powder coated, fully assembled with nuts & bolts and ready to install in the field. [Come visit our website: www.hosehobbles.com](http://www.hosehobbles.com)

Hobble Clamp Systems comes with standard 36" length cable or chain. If you need longer or shorter cables/chain, please specify length for custom price quote.

All of our Hobble Clamp Systems comes with certified components with serial numbers stated on each tag.



# HOBBLE CLAMP ORDERING OPTIONS

When ordering Hobble Clamp Systems, please specify the outside diameter (O.D.) of your pipe or hose and maximum working pressure (PSI).

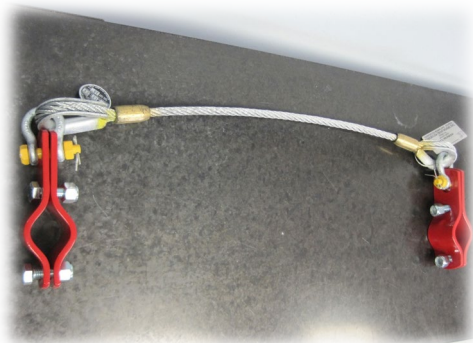
HOBBLE CLAMP x ANCHOR  
PLATE WITH CABLE



HOBBLE CLAMP x ANCHOR  
PLATE WITH CHAIN



HOBBLE CLAMP x HOBBLE  
CLAMP WITH CABLE



HOBBLE CLAMP x HOBBLE  
CLAMP WITH CHAIN



# HINGE HOBBLE CLAMPS

A slight variation of the Hobble Clamp, the Hinge Hobble has a low-profile design. One side of the Hobble Clamp has a hinge, the other side has the extended single ear.



| O.D. SIZE | WEIGHT (LBS) |  | O.D. SIZE | WEIGHT (LBS) |
|-----------|--------------|--|-----------|--------------|
| 2.625"    | 6.85         |  | 5.5"      | 14.4         |
| 2.8"      | 7            |  | 5.8"      | 15.45        |
| 3.75"     | 8.15         |  | 6"        | 15.45        |
| 4.063"    | 12.05        |  | 6.25"     | 16           |
| 4.5"      | 12.65        |  | 6.5"      | 16.85        |
| 5"        | 13.75        |  | 8.5"      | 19.6         |
| 5.25"     | 13.6         |  |           |              |

# PIPE CLAMPS & LIFTING CLAMPS

Bare metal variation of the Hobble Clamp without the extended single or double ears. Generally, pipe clamps are used to weld onto existing metal stands or fixtures at work sites.





# PIPE CLAMP – 2 BOLT STYLE



| O.D. SIZE | WEIGHT |  | O.D. SIZE | WEIGHT |
|-----------|--------|--|-----------|--------|
| 1" 2B     | 1.4    |  | 5.5" 2B   | 10.95  |
| 1.5" 2B   | 2.35   |  | 6.625" 2B | 12.8   |
| 2" 2B     | 2.75   |  | 8" 2B     | 9.45   |
| 3" 2B     | 4.65   |  | 10" 2B    | 18.05  |
| 4.5" 2B   | 5.85   |  |           |        |

\*INCLUDES NUTS AND BOLTS

# PIPE CLAMP – 4 BOLT STYLE



| O.D. SIZE  | WEIGHT |  | O.D. SIZE | WEIGHT |
|------------|--------|--|-----------|--------|
| 3.5" 4B    | 7.35   |  | 8" 4B     | 16.65  |
| 4.5" 4B    | 12.1   |  | 8" 4B     | 20.25  |
| 5.5" 4B    | 13.85  |  | 10" 4B    | 23.4   |
| 5.5" 4B SQ | 19.88  |  | 12" 4B    | 27     |
| 6.625" 4B  | 16.65  |  |           |        |

\*INCLUDES NUTS AND BOLTS

## RED IRON RESTRAINTS

The RED IRON RESTRAINT system is designed to help contain high-pressure piping and components in case of rupture during the pumping process. The destructive force of an unrestrained flow line rupture, regardless of the cause, can be devastating and catastrophic to both people and equipment.

Metal components that were previously subjected to up to 15,000 PSI of internal pressure are instantly forced to relieve that pressure. This could cause components to become airborne causing severe damage or injuries.

Installation of the RED IRON RESTRAINT system can help producers and well service providers deliver on a commitment to safety at the well site. The RED IRON RESTRAINT system utilizes half-hitches on each side the hammer unions running the full length of the flow line. The system is anchored at each end giving 100% securement. The RED IRON RESTRAINT system is suitable for both energized and non-energized.



## SYSTEM COMPONENTS

The Light-duty reds are designed for 2" – 1502.

The Medium-duty blues are designed for 3" – 1502.

The Heavy-duty orange are designed for the 4" – 1502.

Most companies only purchase the 20' restraints.

These engineered synthetic restraints half hitch on each side of hammer unions from well-head to pumps.

These components are optimized for their application and include the following features:

- Compliance with ASTM B30.20
- Tested to verify performance at -30C
- Galvanized coating per ASTM A153
- Locking mechanism to prevent shackle from disengaging
- Proof testing



# APPLICATIONS

The RED IRON RESTRAINT system is intended for all applications involving pressurized fluid or gas. This includes energized fluids, non-energized fluids, fixed and temporary applications. The following is a detailed list of potential applications that are appropriate for use with the RED IRON RESTRAINT system.

## SERVICE TYPE

- Nitrogen
- CO2
- Cementing
- Acidizing
- Slick Water
- Foam Frac

## APPLICATIONS

- Treating iron lines
- Well head / riser
- Manifolds and manifold trailers
- Pump discharge bridle assemblies

# RED IRON RESTRAINT

|                       | WEIGHT (LBS) | 2" 1502 PIPING | 3" 1502 PIPING | 4" 1502 PIPING |
|-----------------------|--------------|----------------|----------------|----------------|
| 4' RED LIGHT DUTY     | 4            | 15K MAX. PSI   | 8K MAX. PSI    | 5K MAX. PSI    |
| 5' RED LIGHT DUTY     | 4.5          | 15K MAX. PSI   | 8K MAX. PSI    | 5K MAX. PSI    |
| 5' 6" RED LIGHT DUTY  | 5            | 15K MAX. PSI   | 8K MAX. PSI    | 5K MAX. PSI    |
| 10' RED LIGHT DUTY    | 10           | 15K MAX. PSI   | 8K MAX. PSI    | 5K MAX. PSI    |
| 20' RED LIGHT DUTY    | 18           | 15K MAX. PSI   | 8K MAX. PSI    | 5K MAX. PSI    |
|                       |              |                |                |                |
| 4' BLUE MEDIUM DUTY   | 7            | 20K MAX. PSI   | 15K MAX. PSI   | 10K MAX. PSI   |
| 5' 6" MEDIUM DUTY     | 9            | 20K MAX. PSI   | 15K MAX. PSI   | 10K MAX. PSI   |
| 10' BLUE MEDIUM DUTY  | 16           | 20K MAX. PSI   | 15K MAX. PSI   | 10K MAX. PSI   |
| 20' BLUE MEDIUM DUTY  | 33           | 20K MAX. PSI   | 15K MAX. PSI   | 10K MAX. PSI   |
|                       |              |                |                |                |
| 10' ORANGE HEAVY DUTY | 23           | 20K MAX. PSI   | 20K MAX. PSI   | 15K MAX. PSI   |
| 20' ORANGE HEAVY DUTY | 43           | 20K MAX. PSI   | 20K MAX. PSI   | 15K MAX. PSI   |

# SHACKLES

Light Duty Red require  $\frac{3}{4}$ " – 4.75 ton shackle with 6-1 safety factor.  
Minimum break: 57,000 lbs

Medium Duty Blue require 1.25" – 12 ton shackle with 6-1 safety factor.  
Minimum break: 144,000 lbs

Heavy Duty Orange require 1.25" – 12 ton shackle with 6-1 safety factor.  
Minimum break: 144,000 lbs



**\*Installation seminar is available at no charge**



# RED IRON RESTRAINT CHOKERS

A variation of the Red Iron Restraint, the Red Iron Restraint Choker has a loop on each end.



|                               | WEIGHT (LBS) | 2" 1502 PIPING | 3" 1502 PIPING | 4" 1502 PIPING |
|-------------------------------|--------------|----------------|----------------|----------------|
| 5' 6" LIGHT DUTY-RED CHOKER   | 4.5          | 15K MAX. PSI   | 8K MAX. PSI    | 5K MAX. PSI    |
| 5' 6" MEDIUM DUTY-BLUE CHOKER | 9            | 20K MAX. PSI   | 15K MAX. PSI   | 10K MAX. PSI   |

## WHIP STOPS

The WHIP STOP has a specially designed braided cable which allows the cable to tighten down on the hose during a failure. Unlike the WHIP CHECK or the Hobble Clamp, the WHIP STOP will continue tightening down. The double leg anchoring points prevent the hose from whipping side to side making the WHIP STOP very desirable where employees are work near high pressure applications.



# STANDARD WHIP STOP PSI RATINGS





# GALVANIZED WHIP STOPS

| P/N (HOSE ID) | HOSE OD (INCHES) | WEIGHT (LBS) | AVERAGE BREAKING STRENGTH | MAXIMUM PSI " <u>FLUID</u> " AFTER SAFETY FACTOR | MAXIMUM PSI " <u>AIR</u> " AFTER SAFETY FACTOR |
|---------------|------------------|--------------|---------------------------|--|--|
| 3/8"          | 5/16" - 1/2"     | 0.30         | 4,200 LBS                 | 25,000 PSI                                       | 12,000 PSI                                     |
| 1/2"          | 1/2" - 3/4"      | 0.40         | 4,200 LBS                 | 14,000 PSI                                       | 7,100 PSI                                      |
| 7/8"          | 3/4" - 1.1/8"    | 0.60         | 6,200 LBS                 | 6,500 PSI  | 3,400 PSI                                      |
| 1"            | 1.1/8" - 1.1/2"  | 1.20         | 12,000 LBS                | 8,500 PSI  | 4,200 PSI                                      |
| 1.1/4"        | 1.1/2" - 1.7/8"  | 1.30         | 12,000 LBS                | 5,400 PSI  | 2,700 PSI                                      |
| 1.1/2"        | 1.7/8" - 2.3/8"  | 2.45         | 17,000 LBS                | 6,000 PSI  | 3,000 PSI                                      |
| 2"            | 2.3/8" - 2.3/4"  | 2.45         | 17,000 LBS                | 3,300 PSI  | 1,650 PSI                                      |
| 2.1/2"        | 2.3/4" - 3.3/8"  | 2.50         | 17,000 LBS                | 2,100 PSI  | 1,000 PSI                                      |
| 3"            | 3.3/8" - 3.7/8"  | 5.20         | 26,000 LBS                | 2,400 PSI  | 1,200 PSI                                      |
| 3.1/2"        | 3.7/8" - 4.3/4"  | 5.50         | 26,000 LBS                | 1,800 PSI  | 900 PSI  |
| 4"            | 4.3/4" - 5.1/2"  | 8.30         | 30,000 LBS                | 1,500 PSI  | 750 PSI  |
| 6"            | 5.1/2" - 7"      | 10.00        | 30,000 LBS                | 700 PSI  | 350 PSI  |

# STAINLESS STEEL WHIP STOPS

| P/N (HOSE ID) | HOSE OD (INCHES) | WEIGHT (LBS) | AVERAGE BREAKING STRENGTH | MAXIMUM PSI " <u>FLUID</u> " AFTER SAFETY FACTOR | MAXIMUM PSI " <u>AIR</u> " AFTER SAFETY FACTOR |
|---------------|------------------|--------------|---------------------------|--|--|
| 3/8"          | 5/16" - 1/2"     | 0.30         | 4,200 LBS                 | 25,000 PSI                                       | 12,000 PSI                                     |
| 1/2"          | 1/2" - 3/4"      | 0.40         | 4,200 LBS                 | 14,000 PSI                                       | 7,100 PSI                                      |
| 7/8"          | 3/4" - 1.1/8"    | 0.60         | 6,200 LBS                 | 6,500 PSI  | 3,400 PSI                                      |
| 1"            | 1.1/8" - 1.1/2"  | 1.20         | 12,000 LBS                | 8,500 PSI  | 4,200 PSI                                      |
| 1.1/4"        | 1.1/2" - 1.7/8"  | 1.30         | 12,000 LBS                | 5,400 PSI  | 2,700 PSI                                      |
| 1.1/2"        | 1.7/8" - 2.3/8"  | 2.45         | 17,000 LBS                | 6,000 PSI  | 3,000 PSI                                      |
| 2"            | 2.3/8" - 2.3/4"  | 2.45         | 17,000 LBS                | 3,300 PSI  | 1,650 PSI                                      |
| 2.1/2"        | 2.3/4" - 3.3/8"  | 2.50         | 17,000 LBS                | 2,100 PSI  | 1,000 PSI                                      |
| 3"            | 3.3/8" - 3.7/8"  | 5.20         | 26,000 LBS                | 2,400 PSI  | 1,200 PSI                                      |
| 3.1/2"        | 3.7/8" - 4.3/4"  | 5.50         | 26,000 LBS                | 1,800 PSI  | 900 PSI  |
| 4"            | 4.3/4" - 5.1/2"  | 8.30         | 30,000 LBS                | 1,500 PSI  | 750 PSI  |
| 6"            | 5.1/2" - 7"      | 10.00        | 30,000 LBS                | 700 PSI  | 350 PSI  |

## CABLE CHOKERS

The CABLE CHOKER has a specially designed nylon spool which allows the cable to tighten down on the hose during a failure. Unlike the WHIP CHECK or the Hobble Clamp, the CABLE CHOKER will continue tightening down sometimes even choking off the air for a more controlled release.



# STANDARD CABLE CHOKER PSI RATINGS

(HOSE CHOKER) HOSE RESTRAINT.  
AMERICAN IRON WORKS INC.

| CC 3/32" CABLE CHOKER                      |       |       |      |      |     |
|--|-------|-------|------|------|-----|
| HOSE I.D.                                  | .25"  | .375" | .5"  | .75" | 1"  |
| MAX PSI FLUID                              | 13000 | 6000  | 3200 | 1500 | 800 |
| MAX PSI AIR                                | 6000  | 3000  | 1600 | 750  | 400 |
| YUKON, OK (405) 577-2877    MADE IN U.S.A. |       |       |      |      |     |

(HOSE CHOKER) HOSE RESTRAINT.  
AMERICAN IRON WORKS INC.

| CC 1/8" CABLE CHOKER                       |      |      |      |       |      |
|--|------|------|------|-------|------|
| HOSE I.D.                                  | .5"  | .75" | 1"   | 1.25" | 1.5" |
| MAX PSI FLUID                              | 6000 | 2500 | 1500 | 950   | 600  |
| MAX PSI AIR                                | 3000 | 1250 | 750  | 450   | 300  |
| YUKON, OK (405) 577-2877    MADE IN U.S.A. |      |      |      |       |      |

(HOSE CHOKER) HOSE RESTRAINT.  
AMERICAN IRON WORKS INC.

| CC 3/16" CABLE CHOKER                      |       |      |      |       |      |
|--|-------|------|------|-------|------|
| HOSE I.D.                                  | .5"   | .75" | 1"   | 1.25" | 1.5" |
| MAX PSI FLUID                              | 16000 | 7000 | 4000 | 2500  | 1800 |
| MAX PSI AIR                                | 8000  | 3500 | 2000 | 1250  | 900  |
| YUKON, OK (405) 577-2877    MADE IN U.S.A. |       |      |      |       |      |

(HOSE CHOKER) HOSE RESTRAINT.  
AMERICAN IRON WORKS INC.

| CC 1/4" CABLE CHOKER                       |      |       |      |      |     |
|--|------|-------|------|------|-----|
| HOSE I.D.                                  | 1.5" | 1.75" | 2"   | 2.5" | 3"  |
| MAX PSI FLUID                              | 2600 | 1900  | 1500 | 900  | 650 |
| MAX PSI AIR                                | 1300 | 950   | 750  | 450  | 300 |
| YUKON, OK (405) 577-2877    MADE IN U.S.A. |      |       |      |      |     |

(HOSE CHOKER) HOSE RESTRAINT.  
AMERICAN IRON WORKS INC.

| CC 5/16" CABLE CHOKER                      |      |       |      |      |      |
|--|------|-------|------|------|------|
| HOSE I.D.                                  | 1.5" | 1.75" | 2"   | 2.5" | 3"   |
| MAX PSI FLUID                              | 4500 | 3500  | 2500 | 1700 | 1200 |
| MAX PSI AIR                                | 2200 | 1750  | 1200 | 850  | 600  |
| YUKON, OK (405) 577-2877    MADE IN U.S.A. |      |       |      |      |      |

(HOSE CHOKER) HOSE RESTRAINT.  
AMERICAN IRON WORKS INC.

| CC 3/8" CABLE CHOKER                       |      |      |      |      |     |
|--|------|------|------|------|-----|
| HOSE I.D.                                  | 1.5" | 2"   | 2.5" | 3"   | 4"  |
| MAX PSI FLUID                              | 6000 | 3000 | 2000 | 1500 | 800 |
| MAX PSI AIR                                | 3000 | 1500 | 1000 | 750  | 400 |
| YUKON, OK (405) 577-2877    MADE IN U.S.A. |      |      |      |      |     |

(HOSE CHOKER) HOSE RESTRAINT.  
AMERICAN IRON WORKS INC.

| CC 7/16" CABLE CHOKER                      |      |      |      |     |     |
|--|------|------|------|-----|-----|
| HOSE I.D.                                  | 2"   | 3"   | 4"   | 5"  | 6"  |
| MAX PSI FLUID                              | 5000 | 2000 | 1200 | 800 | 500 |
| MAX PSI AIR                                | 2500 | 1000 | 600  | 400 | 250 |
| YUKON, OK (405) 577-2877    MADE IN U.S.A. |      |      |      |     |     |

(HOSE CHOKER) HOSE RESTRAINT.  
AMERICAN IRON WORKS INC.

| CC 1/2" CABLE CHOKER                       |      |     |     |     |     |
|--|------|-----|-----|-----|-----|
| HOSE I.D.                                  | 5"   | 6"  | 8"  | 10" | 12" |
| MAX PSI FLUID                              | 1200 | 800 | 400 | 300 | 200 |
| MAX PSI AIR                                | 600  | 400 | 200 | 150 | 100 |
| YUKON, OK (405) 577-2877    MADE IN U.S.A. |      |     |     |     |     |

# CABLE CHOKER

| PART NUMBER | HOSE I.D. (INSIDE DIAMETER) | CABLE STRENGTH IN STATIC LOAD | LENGTH LOOP TO LOOP | MAXIMUM PSI FLUID |        | MAXIMUM PSI FLUID |        | MAXIMUM PSI FLUID |       | MAXIMUM PSI FLUID |       | MAXIMUM PSI FLUID |       |
|-------------|-----------------------------|-------------------------------|---------------------|-------------------|--------|-------------------|--------|-------------------|-------|-------------------|-------|-------------------|-------|
|             |                             |                               |                     | Hose I.D.         |        | Hose I.D.         |        | Hose I.D.         |       | Hose I.D.         |       | Hose I.D.         |       |
| CC-3/32     | .25" - .75"                 | 675 lbs.                      | 12"                 | .25"              | 13,000 | .375"             | 6,000  | .5"               | 3,200 | .75"              | 1,500 |                   |       |
| CC-1/8      | .25" - 1"                   | 1,200 lbs.                    | 12"                 | .25"              | 20,000 | .375"             | 10,000 | .5"               | 6,000 | .75"              | 2,500 | 1"                | 1,500 |
| CC-3/16     | .5" - 1.5"                  | 3,200 lbs.                    | 24"                 | .5"               | 16,000 | .75"              | 7,000  | 1"                | 4,000 | 1.25"             | 2,500 | 1.5"              | 1,800 |
| CC-1/4      | 1" - 2"                     | 4,800 lbs.                    | 24"                 | 1"                | 6,000  | 1.25"             | 4,000  | 1.5"              | 2,700 | 2"                | 1,500 |                   |       |
| CC-5/16     | 1.5" - 3"                   | 8,800 lbs.                    | 24"                 | 1.5"              | 4,500  | 1.75"             | 3,500  | 2"                | 2,500 | 2.5"              | 1,700 | 3"                | 1,200 |
| CC-3/8      | 1.5" - 3"                   | 11,000 lbs.                   | 42"                 | 1.5"              | 6,000  | 2"                | 3,000  | 2.5"              | 2,000 | 3"                | 1,500 |                   |       |
| CC-3/8-L    | 4" - 6"                     | 11,000 lbs.                   | 42"                 | 4"                | 800    | 5"                | 500    | 6"                | 400   |                   |       |                   |       |
| CC-7/16     | 1.5" - 3"                   | 16,000 lbs.                   | 42"                 | 1.5"              | 9,000  | 2"                | 5,000  | 2.5"              | 2,500 | 3"                | 2,200 |                   |       |
| CC-7/16-L   | 4" - 6"                     | 16,000 lbs.                   | 42"                 | 4"                | 1,300  | 5"                | 800    | 6"                | 600   |                   |       |                   |       |
| CC-1/2      | 3" - 6"                     | 22,000 lbs.                   | 42"                 | 3"                | 3,000  | 4"                | 1,800  | 5"                | 1,200 | 6"                | 800   |                   |       |
| CC-1/2-L    | 8" - 12"                    | 22,000 lbs.                   | 42"                 | 8"                | 400    | 10"               | 300    | 12"               | 200   |                   |       |                   |       |

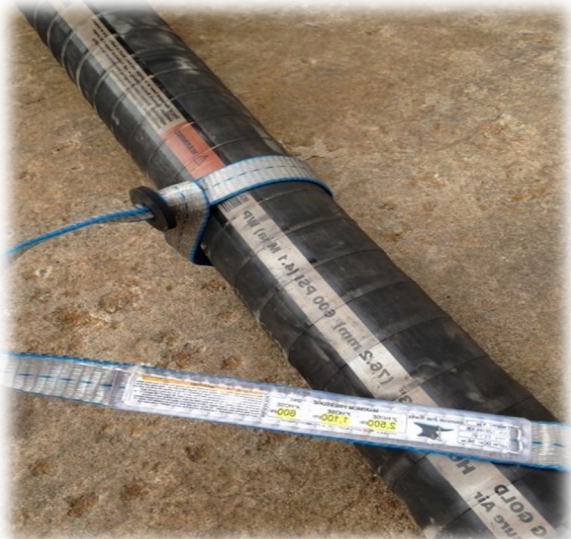
| PART NUMBER | HOSE I.D. (INSIDE DIAMETER) | CABLE STRENGTH IN STATIC LOAD | LENGTH LOOP TO LOOP | MAXIMUM PSI AIR |        | MAXIMUM PSI AIR |       | MAXIMUM PSI AIR |       | MAXIMUM PSI AIR |       | MAXIMUM PSI AIR |     |
|-------------|-----------------------------|-------------------------------|---------------------|-----------------|--------|-----------------|-------|-----------------|-------|-----------------|-------|-----------------|-----|
|             |                             |                               |                     | Hose I.D.       |        | Hose I.D.       |       | Hose I.D.       |       | Hose I.D.       |       | Hose I.D.       |     |
| CC-3/32     | .25" - .75"                 | 675 lbs.                      | 12"                 | .25"            | 6,000  | .375"           | 3,000 | .5"             | 1,600 | .75"            | 750   |                 |     |
| CC-1/8      | .25" - 1"                   | 1,200 lbs.                    | 12"                 | 0.25"           | 10,000 | 0.375"          | 5,000 | .5"             | 3,000 | .75"            | 1,250 | 1"              | 750 |
| CC-3/16     | .5" - 1.5"                  | 3,200 lbs.                    | 24"                 | .5"             | 8,000  | .75"            | 3,500 | 1"              | 2,000 | 1.25"           | 1,250 | 1.5"            | 900 |
| CC-1/4      | 1" - 2"                     | 4,800 lbs.                    | 24"                 | 1"              | 3,000  | 1.25"           | 2,000 | 1.5"            | 1,350 | 2"              | 750   |                 |     |
| CC-5/16     | 1.5" - 3"                   | 8,800 lbs.                    | 24"                 | 1.5"            | 2,200  | 1.75"           | 1,750 | 2"              | 1,200 | 2.5"            | 850   | 3"              | 600 |
| CC-3/8      | 1.5" - 3"                   | 11,000 lbs.                   | 42"                 | 1.5"            | 3,000  | 2"              | 1,500 | 2.5"            | 1,000 | 3"              | 750   |                 |     |
| CC-3/8-L    | 4" - 6"                     | 11,000 lbs.                   | 42"                 | 4"              | 400    | 5"              | 250   | 6"              | 200   |                 |       |                 |     |
| CC-7/16     | 1.5" - 3"                   | 16,000 lbs.                   | 42"                 | 1.5"            | 4,500  | 2"              | 2,500 | 2.5"            | 1,250 | 3"              | 1,100 |                 |     |
| CC-7/16-L   | 4" - 6"                     | 16,000 lbs.                   | 42"                 | 4"              | 650    | 5"              | 400   | 6"              | 300   |                 |       |                 |     |
| CC-1/2      | 3" - 6"                     | 22,000 lbs.                   | 42"                 | 3"              | 1,500  | 4"              | 900   | 5"              | 600   | 6"              | 400   |                 |     |
| CC-1/2-L    | 8" - 12"                    | 22,000 lbs.                   | 42"                 | 8"              | 200    | 10"             | 150   | 12"             | 100   |                 |       |                 |     |

When placing orders for cable chokers, please provide the following information:

- Hose ID (Inside Diameter)
- Hose OD (Outside Diameter)
- Maximum Working Pressure (PSI)
- Fluid or Air application

# NYLON CHOKER

The NYLON CHOKER has a specially designed choking action which allows the nylon to tighten down on the hose during a failure. Unlike the WHIP CHECK or the Hobble Clamp, the NYLON CHOKER will continue tightening down sometimes even choking off the air for a more controlled release.



# Web Slings

## ENVIRONMENTAL CONSIDERATIONS & OUTDOOR USE

Web Slings

Exposure to sunlight, and other environmental factors such as dirt or gritty matter and cyclical changes in temperature and humidity, can result in an accelerated deterioration of web slings. The rate of this deterioration varies with the level of exposure and with the thickness of the sling material.

Visible indication of such environmental deterioration can include the following:

- Fading of webbing color
- Uneven or disoriented surface yarn of the webbing
- Shortening of the sling length
- Reduction in elasticity of the sling due to exposure to sunlight, often evident by accelerated abrasive damage to the surface yarns of the sling
- Breakage or damage to yarn fibers, often evident by a fuzzy appearance of the web
- Stiffening of the web, evident when web slings are exposed to outdoor conditions

### Anti-Abrasion Treatment

As a standard, webbing is treated for abrasion. Natural, untreated webbing is available upon request.

Note: Heavy duty treatments are available as a supplemental process for greater protection.

Elasticity - The stretch characteristics of web slings depends on the type of yarn and the web finish. Approximate stretch at RATED SLING CAPACITY is:

| NYLON     |     | POLYESTER |    |
|-----------|-----|-----------|----|
| Treated   | 10% | Treated   | 7% |
| Untreated | 6%  | Untreated | 3% |

Prior to sling selection and use, review and understand the "Help" section.

### Sling Length Tolerance for Web Slings

| Sling Type | Tolerance *                     |
|------------|---------------------------------|
| 1 Ply      | ± (1.5" + 1.5% of sling length) |
| 2 Ply      | ± (2.0" + 2% of sling length)   |
| 3 & 4 Ply  | ± (3.0" + 3% of sling length)   |

\* For web sling widths wider than 6", add 1/2" to these values. For tighter tolerance or matched set length requirements, please consult with Customer Service.

### ⚠ WARNING

Read Definition on page 3

### Sunlight / UV Exposure Service Life

Nylon and polyester web slings possess a limited useful outdoor service life due to the degradation caused by exposure to sunlight, or other measurable sources of UV radiation.

web slings that are regularly exposed to outdoor conditions should be identified with the date they are placed into service, and should be proof tested to twice their rated capacity every six months.

nylon and polyester web slings shall be permanently removed from service when the cumulative outdoor exposure has reached these limits:

- 2 years for 1 ply and 2 ply web slings
- 3 years for 3 ply and 4 ply web slings

### Temperature

Nylon and polyester are seriously degraded at temperatures above 200°F.

### Chemical Environment Data

Many chemicals have an adverse effect on nylon and polyester. The Chemical chart below is a general guide only. For specific temperature, concentration and time factors, please consult prior to purchasing or use.

| CHEMICAL                  | OK / NO |           |
|---------------------------|---------|-----------|
|                           | NYLON   | POLYESTER |
| Acids                     | NO      | NO        |
| Alcohols                  | OK      | OK        |
| Aldehydes                 | OK      | NO        |
| Alkalis                   | OK      | NO        |
| Bleaching Agents          | NO      | NO        |
| Dry Cleaning Solvents     | OK      | OK        |
| Ethers                    | OK      | OK        |
| Halogenated Hydro-Carbons | OK      | OK        |
| Hydro-Carbons             | OK      | OK        |
| Ketones                   | OK      | OK        |
| Oils Crude                | OK      | OK        |
| Oils Lubricating          | OK      | OK        |
| Soap & Detergents         | OK      | OK        |
| Water & Seawater          | OK      | OK        |
| Weak Alkalis              | OK      | OK        |

\* Disintegrated by concentrated sulfuric acid.

# NYLON CHOKER – FLUID

| Part # | Breaking strength | Length: Loop to Loop | Recommended for Use on the Following Hose Inside Diameters using "Fluid" |        |        |        |        |       |       |       |     |
|--------|-------------------|----------------------|--|--------|--------|--------|--------|-------|-------|-------|-----|
|        |                   |                      | 1/4"   | 3/8"   | 1/2"   | 3/4"   | 1"     | 2"    | 3"    | 4"    | 6"  |
|        |                   |                      | Hose Maximum Internal Pressure PSI at Above Hose I.D.                    |        |        |        |        |       |       |       |     |
| NC118  | 4000 lbs.         | 18"                  | 26,000   | 20,000 | 13,000 | 6,000  | 3,000  | -     | -     | -     | -   |
| NC124  | 4000 lbs.         | 24"                  | 26,000   | 20,000 | 13,000 | 6,000  | 3,000  | -     | -     | -     | -   |
| NC130  | 4000 lbs.         | 30"                  | 26,000   | 20,000 | 13,000 | 6,000  | 3,000  | -     | -     | -     | -   |
| NC136  | 4000 lbs.         | 36"                  | 26,000   | 20,000 | 13,000 | 6,000  | 3,000  | -     | -     | -     | -   |
| NC156  | 7000 lbs.         | 36"                  | -  | -      | -      | -      | -      | 1,450 | 650   | 350   | -   |
| NC180  | 7000 lbs.         | 36"                  | -  | -      | -      | -      | -      | -     | 650   | 350   | 150 |
| NC218  | 8000 lbs.         | 18"                  | 40,000   | 30,000 | 27,000 | 12,000 | 6,500  | 1,650 | -     | -     | -   |
| NC224  | 8000 lbs.         | 24"                  | 40,000   | 30,000 | 27,000 | 12,000 | 6,500  | 1,650 | -     | -     | -   |
| NC236  | 8000 lbs.         | 36"                  | -  | -      | -      | -      | 6,500  | 1,650 | 750   | 400   | -   |
| NC248  | 8000 lbs.         | 48"                  | -  | -      | -      | -      | 6,500  | 1,650 | 750   | 400   | 175 |
| NC260  | 8000 lbs.         | 60"                  | -  | -      | -      | -      | -      | 1,650 | 750   | 400   | 175 |
| NC344  | 18000lbs.         | 24"                  | -  | -      | -      | -      | 20,000 | 5,000 | 2,500 | 1,400 | -   |
| NC364  | 18000lbs.         | 36"                  | -  | -      | -      | -      | -      | 5,000 | 2,500 | 1,400 | 600 |
| NC444  | 23000lbs.         | 24"                  | -  | -      | -      | -      | 25,000 | 6,000 | 3,000 | 1,700 | -   |
| NC464  | 23000lbs.         | 36"                  | -  | -      | -      | -      | -      | 6,000 | 3,000 | 1,700 | 800 |

\*Custom sizes available, please call for quote

# NYLON CHOKER – AIR

| Part # | Breaking strength | Length: Loop to Loop | Recommended for Use on the Following Hose Inside Diameters using "Air" |        |        |       |        |       |       |     |     |
|--------|-------------------|----------------------|--|--------|--------|-------|--------|-------|-------|-----|-----|
|        |                   |                      | 1/4"   | 3/8"   | 1/2"   | 3/4"  | 1"     | 2"    | 3"    | 4"  | 6"  |
|        |                   |                      | Hose Maximum Internal Pressure PSI at Above Hose I.D.                  |        |        |       |        |       |       |     |     |
| NC118  | 4000 lbs.         | 18"                  | 26,000   | 12,000 | 6,500  | 3,000 | 1,700  | -     | -     | -   | -   |
| NC124  | 4000 lbs.         | 24"                  | 26,000   | 12,000 | 6,500  | 3,000 | 1,700  | -     | -     | -   | -   |
| NC130  | 4000 lbs.         | 30"                  | 26,000   | 12,000 | 6,500  | 3,000 | 1,700  | -     | -     | -   | -   |
| NC136  | 4000 lbs.         | 36"                  | 26,000   | 12,000 | 6,500  | 3,000 | 1,700  | -     | -     | -   | -   |
| NC156  | 7000 lbs.         | 36"                  | -  | -      | -      | -     | -      | 725   | 325   | 175 | -   |
| NC180  | 7000 lbs.         | 36"                  | -  | -      | -      | -     | -      | -     | 325   | 175 | 75  |
| NC218  | 8000 lbs.         | 18"                  | 40,000   | 15,000 | 13,000 | 6,000 | 3,350  | 825   | -     | -   | -   |
| NC224  | 8000 lbs.         | 24"                  | 40,000   | 15,000 | 13,000 | 6,000 | 3,350  | 825   | -     | -   | -   |
| NC236  | 8000 lbs.         | 36"                  | -  | -      | -      | -     | 3,350  | 825   | 375   | 200 | -   |
| NC248  | 8000 lbs.         | 48"                  | -  | -      | -      | -     | 3,350  | 825   | 375   | 200 | 85  |
| NC260  | 8000 lbs.         | 60"                  | -  | -      | -      | -     | -      | 825   | 375   | 200 | 85  |
| NC344  | 18000lbs.         | 24"                  | -  | -      | -      | -     | 10,000 | 2,500 | 1,250 | 700 | -   |
| NC364  | 18000lbs.         | 36"                  | -  | -      | -      | -     | -      | 2,500 | 1,250 | 700 | 300 |
| NC444  | 23000lbs.         | 24"                  | -  | -      | -      | -     | 12,000 | 3,000 | 1,500 | 800 | -   |
| NC464  | 23000lbs.         | 36"                  | -  | -      | -      | -     | -      | 3,000 | 1,500 | 800 | 400 |

\*Custom sizes available, please call for quote

# WHIP CHECKS

If a hose fails at the fitting area, Whip Checks are designed to give limited protection from hose whipping. The Whip Check will work on hoses ranging in size from ½” I.D. to 4” I.D. and only should be used on hoses with a maximum pressure of 200 PSI.



| <u>PART NUMBERS</u> | <u>CABLE SIZE</u> | <u>HOSE RANGE INSIDE DIAMETER</u> | <u>MAXIMUM PSI</u> |
|---------------------|-------------------|-----------------------------------|--------------------|
| WC-1                | 1/8" X 20"        | .5" - 1.25"                       | 200 PSI            |
| WC-2                | 3/16" X 28"       | 1.25" - 1.75"                     | 200 PSI            |
| WC-3                | 1/4" X 38"        | 2" - 3.5"                         | 200 PSI            |
| WC-4                | 3/8" X 44"        | 4" - 5"                           | 200 PSI            |





Please Visit us at:

[www.topcooilsite.com](http://www.topcooilsite.com)

[1\(800\) 222-6448](tel:18002226448)