

MAILED  
JAN 17 1947  
U.S. DEPARTMENT OF AGRICULTURE  
\* \* \*



GEM EVERBEARING



CONCORD

**\$5.50**

POSTPAID

**FRUIT SPECIAL**

NUMBER 1

- 10 Trees 2 feet and up
- 5 Red Delicious Apple
- 5 Improved Elberta Peach
- 10 Concord Grape Vines
- 25 Gem Everbearing Strawberry



RED DELICIOUS



IMPROVED ELBERTA

**Benton County Nursery Co., Inc.**  
Rogers, Arkansas



Hanska

## RED, WHITE AND BLUE GRAPE SPECIAL

12 Vines: 4 red, 4 white, 4 blue, of the very best varieties,  
that will ripen at different times.

**12** POSTPAID **\$165**  
FOR

### Home Fruit Collection

- 1 Stayman Winesap Apple
- 1 Early Harvest Apple
- 1 Yellow Delicious Apple
- 1 Jonathan Apple

- 1 Blood Red Delicious Apple
- 1 Black Ben Davis Apple
- 1 Summer Champlon Apple
- 1 Yellow Transparent Apple
- 1 Hale Haven Peach
- 1 Krummel October Peach
- 1 Gold Plum
- 1 Hanska Plum

ALL OF THESE POST- **\$660**  
PAID FOR ONLY...



Gold



Yellow Delicious



Hale Haven

# GET

# THIS BIG LIVE MAGAZINE

# NOW!

## 12 MONTHS 50¢ or 60 MONTHS \$2

YOU will wonder how these two great up-to-the-minute illustrated magazines, *Farm Journal* and *The Farmer's Wife*, now printed together, can cost so little. It's for all—men, women, boys and girls,—clean and wholesome, no liquor advertisements. You will be delighted with each month's visit.

*Farm Journal* and *Farmer's Wife*, Dept. C, Phila., Pa.

ONE YEAR 50¢ OR FIVE YEARS \$2   
(12 Big Issues) **BARGAIN OFFER** (60 Big Issues)

Mark the Offer You Want. Send Money Our Risk.

Name .....

R.F.D. .. Box .. or Street .....

If you live on a R.F.D. put route number above for prompt service.

P. O. .... State .....

**IMPORTANT:** Send coupon direct to *Farm Journal* and *Farmer's Wife*, Dept. C, Philadelphia 5, Pa., with remittance (our risk). Price outside U. S. \$1.50 for 2 yrs.



SEE  
OTHER  
SIDE

# TAKE YOUR CHOICE

## 12

MONTHS

## 50¢

Send 50c for 1 year (12 Big Issues, average way over 100 pages).

**BIGGEST BARGAIN**  
Send only \$2 for 5 years (60 Big Issues).

You get an extra year's subscription.

## 60

MONTHS

## \$2

### WORLD'S LARGEST FARM MAGAZINE

FARM JOURNAL AND FARMER'S WIFE is published monthly; big issues; new timely features; fine pictures, beautiful colored covers. Concise, easy to read, 70 years old. Largest mail subscription list in the world,—over 2,600,000 subscribers from Maine to California.

### *Something for the Whole Family*

For folks who live in the Country and love the Country. This fastest printed magazine with month-ahead information gets the important news to you first when valuable and useful.

**FARM JOURNAL** section: Latest ideas in farm practice, equipment and machinery repairs, "How to Do Things," livestock, dairying, poultry, crops, orchard, garden and everything about the farm. Will keep you up-to-date on changing conditions affecting your farming operations. Latest Washington news so important to farmers.

**FARMER'S WIFE** section, with its beautiful cover in colors, is a complete magazine for women readers. Homemaking, decorating, renovating, fashions, needlework patterns. Health and beauty, child care. Foods, canning, recipes. Farm Women's Letters. Clean, interesting fiction.

**DEPARTMENTS FOR GIRLS AND BOYS:** Lotest 4-H Club and FFA news, answers to young folks' problems, grooming, etiquette, parties, games, movies, sports, aviation, hobbies, money-making ideas, jokes, cartoons.

**DON'T FAIL TO READ "LATE AND IMPORTANT LETTER" EVERY ISSUE: PREDICTS FUTURE TRENDS IN BUSINESS OF FARMING**

Mail this Coupon today with remittance (at our risk), direct to Farm Journal and Farmer's Wife, Dept. C., Philadelphia 5, Pa.

Recommended by

**BENTON COUNTY NURSERY CO., INC.**

**IF YOU ARE NOW A SUBSCRIBER, YOU MAY MAIL OR GIVE THIS VALUABLE COUPON TO A FRIEND WHO IS NOT.**



## By Way of Introduction

In presenting this catalog, we desire to extend our thanks for the past patronage of our many customers, and to solicit your orders for the future. Our right to existence is based upon our service and no order is too large or too small to receive our careful attention.

We are always glad to consult with prospective customers and give them suggestions based upon personal knowledge of what others have found the most profitable and satisfactory under similar circumstances.

We strongly recommend that you buy NOW whatever you contemplate planting, and you will have that much more time to enjoy the satisfaction which comes from planting and it is not well to lose sight of the fact that we will be dead a long time after we leave this earth, and satisfaction now is better than the anticipated satisfaction of someone else. For commercial returns, the early bird gets the worm and while there seems no possible failure of the fruit demand for the future, yet the quicker you get your plants into bearing, and learn to properly make the fruit, the greater your advantage over those who plant next year, or "after a while."

### WE SELL ON THE INSTALLMENT PLAN.

On orders amounting to Ten Dollars (\$10) and up, we will be glad to make the following terms to responsible people in order that you may buy and plant what Nursery Stock, Seed and Plants you will need, while the season is on to plant them and pay the balance due on them after they are planted. This enables you to have the stock coming on while you are paying out the balance due.

In buying on our credit plan your order must amount to \$10 or more. To each dollar your order amounts to, add 6 cents. This is done to defray the extra expense of taking care of the Credit Plan orders.

One-half of the amount of the order is to be paid down with the order, or before shipment date. The balance due is to be paid in three equal payments, as follows: One-third of the amount due to be paid one month (30) days from date of shipment. Second payment of one-third of the amount due is to be paid two months (60) days after date of shipment. The third payment of one-third of the amount due is to be paid three months (90) days after date of shipment.

**WE CANNOT ACCEPT ORDERS FOR LESS THAN \$1.00.** Because of the heavy expense of packing and high rates on first pound by parcel post and express we cannot fill orders for less than \$1.00, without loss to us and will ask you to make your order amount to \$1.00 and up.

**C. O. D. ORDERS MUST HAVE A DEPOSIT OF 25% PAID ON THEM.** We are sorry that experience has taught us that

it is a losing proposition to fill orders and make shipments unless a deposit has been paid on the order; our stock is perishable and must have prompt attention when it arrives at destination and we are compelled to ask a deposit of 25 per cent of the amount of the order as a guarantee of good faith. We guarantee satisfaction or your money refunded.

1. We strive to grow good stock and best varieties of all fruits, berries and ornamentals as are known to the Experiment Stations of America.

2. To sell them at the lowest prices that we can possibly afford. We cannot accept orders for less than \$1.00 because of the heavy expense of packing, and high rates on the first pound by Parcel Post, without loss to us. C. O. D. orders must have a deposit paid on them.

**EARLY ORDERS.** To one familiar with the rush at packing season, it must be obvious that it is impossible to fill an order requiring much time in its preparation on short notice without doing an injustice to others who have their orders previously booked. In fairness to all, we have adopted the practice of filling orders in the rotation received, unless orders are received far enough ahead of the packing season with instructions to ship at a given date, so that we can arrange a special shipping date. So we again say—place your orders as far in advance of shipping as you possibly can, stating when you would like the stock sent.

Plant this year; the only way to lower

the cost of the fresh fruit you eat is to plant it yourself. Plant it right in your own dooryard; the more fruit your family eats the less calls your doctor will make, for good ripe fruit is nature's best regulator and appetizer.

**You save from 75 to 100 per cent in buying direct from our Nursery through our catalog.** Read what the U. S. Government Department of Agriculture says, in Farmers' Bulletin, about buying trees and plants: "If the farmer makes his purchase direct from the Nurseryman, he will save the expense of the middleman or agent, and is less liable to the mistakes and injuries that will occur through repeated handling."

**THE SHIPPING SEASON** generally begins about October 15th, and continues until up in May. The season is not regulated, however, by any definite date, nor by the state of vegetation at the locality of the planter, but by condition of the trees when received. Parties south of us may receive our trees some weeks after their season has opened, yet when planted they will give entire satisfaction.

**DON'T BE DECEIVED** by a high priced Salesman and Nurseryman into believing that their goods are better, because they are higher priced; he is only trying to make you pay him a large profit because he considers himself a smooth salesman, but get some of ours for comparison and you will be convinced that ours are as good as can be grown.

**PACKING.** We do not charge for packing, boxing or delivering to the Post Office, Freight or Express Companies at our station.

**REFERENCES.** Dun & Bradstreet Commercial Agents, American Association of Nurserymen, American National Bank, Rogers, Ark., or any business firm in Benton County.

**OUR THANKS.** In presenting this catalog, we desire to thank our friends and customers in all parts of the world for their valued orders, and to respectfully solicit their orders for the future. No order is too large or too small to receive our careful and prompt attention. We are always glad to give you our suggestions of what others have found most profitable to grow.

# Every American Family

Can Grow Their Own FRESH FRUIT This Year!

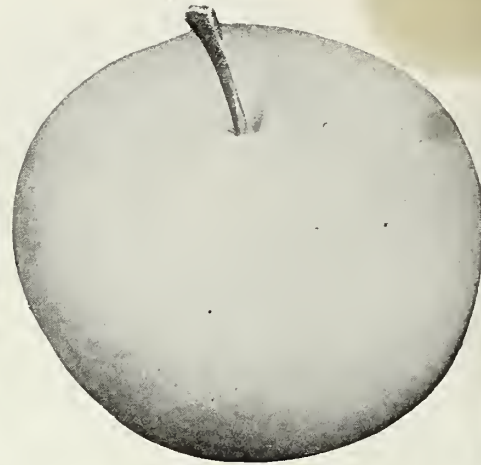
## FRUIT TREES

At prices anyone can afford to pay

*Eat an Apple a Day*



Mammoth Black Twig



Grimes Golden

We will substitute if out of the variety ordered unless you advise us not to substitute.

# APPLE

We offer the best varieties that ripen from early summer to late fall

### Summer Varieties

**EARLY RED BIRD**—The earliest apple on our list, fiery, flaming red, from week to two weeks before the Yellow Transparent. The earliest apples always bring the top prices, this one being of a very fine flavor, of good size and one of the very best for quality of any early apple yet introduced; makes it a winner for a market apple. The trees bear young, annually, and immense crops.

**ADA RED**—Large, red, summer apple; ripens July 25th. Is a brilliant red, fine cooking apple as well as eating apple; large size, and bears heavy annual crops; begins to bear when very young and ripens at a time when there are no other red apples on the market, and always commands the highest prices.

**OLD FASHIONED HORSE**—Large, pale yellow, shaded with red; tender, juicy, sub-acid. Tree vigorous and very hardy; upright grower; bears early and abundantly. An old apple, famous for its fitness for cider, pies, drying and all culinary purposes. When allowed to mellow to deepest gold, it is a delicious eating apple. We have the genuine old-fashioned Horse Apple. Ripens August 1st.

**SWEET BOUGH**—A large, pale yellow apple, tender and sweet. Tree vigorous and long lived. August to early September.

**EARLY HARVEST**—Tree healthy, vigorous and a good bearer. Fruit medium size, nearly round, somewhat flattened; surface smooth, clear, waxy, yellow; rarely blushed; flesh tender, juicy, acid to sub-acid, flavor good. July.

**YELLOW TRANSPARENT**—A Russian apple. The tree is a hardy, upright grower; regular and early bearer, medium size. Color a rich, transparent yellow with a faint blush on sunny side; flesh melting, juicy, sub-acid.

**RED ASTRACHAN**—Tree vigorous, upright; hardy and productive. Fruit medium to large; surface smooth, marbled and striped on greenish yellow; flavor acid.

**RED JUNE**—Medium red; flesh white, tender; juicy, good flavor. Abundant bearer. Last of June.

### Autumn Varieties

**DELICIOUS**—Flourishes well in every state of Union. Bears annually; great yielder, hangs well on trees. Trees very thrifty, long lived and extremely hardy. Fruit very large, nearly covered with brilliant dark-red; flesh fine grained, crisp, juicy, melting and delicious; splendid keeper and shipper, should be in every orchard.

**YELLOW DELICIOUS**—Large as the genuine Delicious, golden in color, delicious flavor; appears to be suited to all soils and climates; the trees bear very young and have heavy crops; the fruit is of the best quality, and will bring highest prices. Ripens in October and will keep until spring.

**MAIDEN BLUSH**—Large, smooth, regular, evenly shaped red cheeks or blush on a pale, yellow ground; flesh white, tender, sprightly, with a pleasant sub-acid flavor; bears large crops. August.

**JONATHAN**—Medium size, roundish, yellow nearly covered with red; flesh white, fine grained, juicy, tender and mild; a delicious and strictly dessert apple that always demands highest market prices. Seedling of Spitzberg. Is a much better tree; vigorous and productive. September to April.

**GRIMES GOLDEN**—This is one of the most popular apple trees in cultivation. Tree strong, thrifty grower. Fruit medium or above, cylindrical; regular surface; yellow veined; russeted; flesh yellow, firm, very fine grained, juicy, flavor sub-acid, quality rich. For dessert, cooking and market. September to April.

**KING DAVID**—October. Size medium to large, color deep rich red with distinct stripe-like markings of very dark red. Originated in Arkansas where it began bearing at three years old. Resembles Jonathan in both tree and fruit. Surpasses that variety in every good quality.

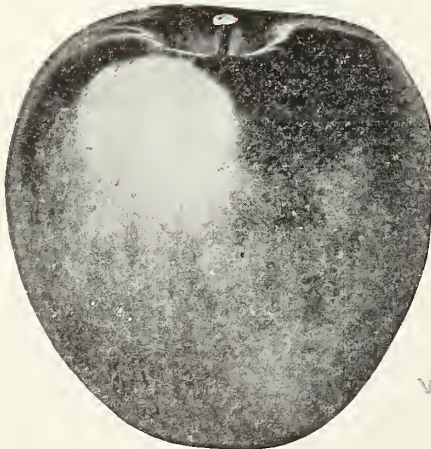
Wentworth, Mo.,  
September 10, 1943

Gentlemen:

I purchased several years ago of you a collection of Apple Trees (Your Selection); often wondered as they grew, if I had "BOUGHT A BLIND PIG IN A SACK" and if they would be worth the time and money I spent for them. In 1941 they had a few blossoms. In 1942 they bore a small crop. They are not "A BLIND PIG IN A SACK" as they were all standard, well known varieties and show clearly they were propagated from parent tree stock of heavy bearing and true to name and high quality. This year they were a mass of blossoms and had a fine set on the trees and would have been highest quality if we had a normal season.

The peach trees I purchased of you last spring came through better than some fine new varieties I bought from your competitors and never lost one of your trees.

Yours respectfully,  
FLAVIUS E. CLARK, Sr.



Black Ben Davis

Watsonville, Calif.,  
January 11, 1943

Sirs:

My trees came just 1 day after your notice. Thank you for everything.  
C. D. REESE.

**FOR PRICES SEE ENCLOSED PRICE LIST**

Lenoir City, Tenn.

Dear Sir:

I received my apple trees in fine shape. Thanking you for your prompt service, I'll do everything I can to help you get more orders.

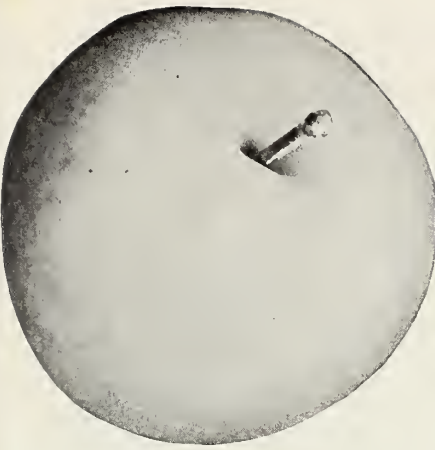
Very truly yours,  
MAGGIE PHILLIPS

# GRAPE VINES

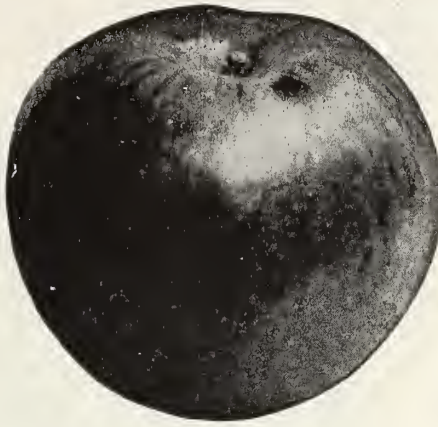
These are rooted grapes (not merely cuttings). They were set out late and did not make large vines this season. They will grow well and make fine vines in one year. We have in this grade:

## CONCORD

Each 5c, 100 for \$4.50  
1000 for \$40.00



Yellow Transparent



Jonathan

# TREES

*Ozark Mountain Grown*

Direct to You from Growers

## WINTER APPLES

**ARKANSAS BLACK**—Vigorous, upright grower. Fruit medium to large; fine flavor; beautiful dark color, almost black; flesh yellowish, slightly sub-acid, crisp. One of the best for cooking. January to March.

**BEN DAVIS**—Tree thrifty, upright grower of almost perfect shape. Fruit large, round, sometimes variable in form; surface smooth; often palish yellow, covered and splashed bright red; flesh white, tender, juicy, flavor sub-acid, not rich quality; only good for market and cooking. November to spring.

**BLACK BEN DAVIS**—Fruit is bright red on yellow ground with no stripes; large oblong; surface smooth, polished, dots minute; basin shallow, sometimes deep; eye large, cavity deep; brown in color; stem medium to long; core medium. Tree healthy, vigorous, and prolific bearer. January to April.

**STAYMAN WINESAP**—Large, roundish, deep red, medium quality; keeps well; tree a fair grower and good bearer. December to May.

**WINESAP**—Medium; dark red; sub-acid. Tree an abundant bearer. One of the finest cider apples grown, both on account of its over abundance of juice and its productiveness. November to April.

**WINTER BANANA**—A highly prized and valuable market sort. Beautiful yellow fruit; flavor exquisite and very tempting; highest quality. Productive. Reliable growers represent it to be hardy north. Very popular for dessert.

**CORTLAND** (Late winter keeper)—This new apple originated at the New York Experiment Station. Of the many thousands of new varieties originated there the Cortland is considered the best; it is a cross between Ben Davis and McIntosh

and possesses the good qualities of both, which makes it one of the most profitable apples to grow; the quality is similar to the McIntosh.

**MAMMOTH BLACK TWIG**—Extra large size, round, skin smooth, yellowish, covered with deep red, the general effect being dark red; flesh tender, tinged with yellow, crisp sub-acid, aromatic; of excellent quality in every way. Tree vigorous, healthy and bears when quite young; very prolific.

**TALMAN SWEET**—Medium size, pale yellow, slightly tinged with red; firm, rich and sweet; excellent for preserving. Tree vigorous, very hardy and productive. November to April.

## Our Apple Trees Are Planted Everywhere

Bard, New Mex.

Benton County Nursery,  
Rogers, Ark.

Dear Sir:

I received the 50 apple trees and 15 grape vines.

They were in good shape. Have them all out. Were a good size.

Thank you very much.

JOHN BOATMAN.

Hopkinsville, Ky.

Benton County Nursery Co.,  
Rogers, Ark.

Dear Sirs:

I received the 50 trees, ordered from you recently, this week and apparently they were in fine shape and I want to state to you that they were as pretty a lot of trees as I have ever seen and I will promise you one thing, that if I order more trees of any description, I will take pleasure in ordering them from your nursery. In the meantime I will also be pleased to advise any of my friends thinking of planting any trees, to order them from you.

Thanking you for your selection of trees sent to me, beg to remain,

Yours very truly,  
R. M. RICE.

## Hansen's BUSH CHERRY

Perfectly hardy anywhere.  
Makes superb jam, or clear, sparkling jelly.

2-3 ft., each, 60c

12 for \$6.00

## EVERGREENS

Low as 15c

These Evergreens are young trees, from 3 to 5 years old. They are well rooted and well shaped and will, in a few years, make a fine specimen evergreen. We offer the following kinds that will range in height from 8 to 10 inches: Norway Pine, Black Hill Spruce, Juniperus Virginiana, Scotch Pines, American Arborvitae.

Each 20c, 12 for \$1.80

## VALUABLE PLANTING GUIDE . . . . FREE!

With every order of nursery stock, we send you Free, a 24-page Planting Guide. It gives you a world of real practical information with many illustrations.

# APPLE TREES

... for **BIG PROFITS**

Plant These 6 Varieties

## RED DELICIOUS (Blood Red) (Triple Red)—

This Delicious is identical with the Genuine Delicious in size and flavor, but is a rich red color; it is a beauty and always brings the highest prices; the quality is of the very best.

**LODI**—Is a seedling of Yellow Transparent. The tree and the fruit resemble the Yellow Transparent but the fruits are much larger and make the Yellow Transparent apples look like culls. The tree bears annually and ripens with the yellow Transparent.

**DELUX**—Very early and large size fruit, good cooking and eating apple with a light green color. Bears heavily.

**BLOOD RED JONATHAN**—Gets red all over, ripens same time as Jonathan; good size and quality.

**BLOOD RED STAYMAN WINESAP** — A large Stayman Winesap that is blood red, excellent quality, keeps well. The tree is a fair grower and good bearer.

**TURLEY**—A blood red Stayman Winesap that does not crack. We highly recommend this variety.

# CRAB APPLES

for All Climates

## DOLGO

**DOLGO**—A handsome red Crab Apple. Flesh is deep red to the core. The fruit is full of juice, jells easily and makes a rich ruby red jelly of beautiful color and excellent flavor.

2 to 4 FT.

Each.....

**80c**

Crab Apples are especially desirable in the colder sections as only a few varieties of apples can be successfully grown; but they succeed well in all climates and their fruit is very popular for preserves, jelly, and some sorts are excellent for eating.

## FLORENCE

The finest of the Crab Apples. Tree of rather small size, coming into bearing when very young and producing heavily; the fruit setting in clusters. The apples will measure about an inch or slightly more in diameter; golden yellow with a bright cheek, or almost entirely red. The flesh is firm, fine grained and exceedingly juicy with that distinct snap-piness so relished in a crab apple.

**RED SIBERIAN**—Fruit about an inch in diameter, brilliant yellow with an attractive red cheek; very juicy and excellent for jellies, preserves and pickles. The tree becomes a very large size.

Direct from  
Grower  
to Planter - - -

at Astonishingly **LOW**

**PRICES**

Plant . . .

## ANOKA

The Old Folks'  
Favorite

Bears second year. A wonderful early apple. Fruit is large and yellow, streaked with strawberry red. Good flavor.

**80c**

EACH

Bishopville, S. C.  
Dec. 5th, 1945

Benton County Nursery Co.  
Rogers, Arkansas  
Gentlemen:

All fruit trees, vines, and shrubbery, in my order from you in 1937, are doing nicely. It might be of interest to you to know that your Arkansas Black is earlier than Mayflower, in this section. Last year ripe peaches were gathered from this tree on May the 14th. This season 1940 over two bushels of peaches were gathered from this tree. Would consider this extra good when this was a 10c tree when put out in February 1937. This peach is a good deal better than Mayflower.

Have ordered Nursery stock from all over the United States from Nurseries. I consider your stock the best I have ever received, for the price, truest to name and must say I am well pleased. All plums, peaches, etc., have proven true to name, and are doing fine. This is more than I can say for several other Nurseries.

I only have a small home orchard. 135 trees, vines, etc. Am experimenting with fruits, nuts, etc., and have quite an assortment of same.

Please furnish me some information regarding your Butternut, and Chinquapin. Do you think they will grow in this section? Is Chinquapin subject to blight? Would appreciate a sample of these nuts, if you can furnish same, I am not familiar with them.

Thanking you for the information, etc.  
Yours very truly,  
J. E. REAVER.

May 16, 1945  
Mt. Ida, Arkansas

To The Benton County  
Nursery Company:

I am dropping you a few lines in regards to the apple trees. I can recommend your Nursery from your trees that I have in the field today as they are the prettiest things I believe I ever saw. I have trees from 2 to 4 years old. I have one yellow delicious 4 years old that has 11 apples on it now. I have lots of people to come and look at my young orchard. I live at the edge of Mt. Ida, Arkansas. I am only 14 years old and hope to have a big orchard someday.

Yours truly,  
LOUIS GLISSON

Portsmouth, Ohio

Dear Sir:

Received my order O. K. - Was well pleased. Will order more in the spring. Thanks many times for sending my order at once.

MRS. MARGARET LEWIS.

Paris, Texas  
Rt. 2, Box 205  
Jan. 3, 1945

Benton County Nursery Co.  
Rogers, Arkansas

I received my fruit tree order yesterday, January 2, in fine condition and thank you for the promptness and care you took in filling my order.

My neighbor, Mr. Chas. Broadway, saw my trees and liked them so well he borrowed my catalog to make his order which you will receive in next few days. I also have another neighbor, Mr. L. B. Edwards, who borrowed my catalog to look over your tree offers and plans to answer soon.

My grapes are in good condition also and I am so proud of my order I will show it to anyone. Hope I have good luck with them and they will grow and bear in due time.

Thanking you again,  
Yours truly,

LEWIS L. RHODES  
Paris, Texas  
Rt. 2, Box 205

**NEW**

Perkin's Everbearing

## APPLE

Medium size, roundish, yellow, nearly covered with red; flesh white, fine grained, juicy, tender and mild. Bears from mid-summer until after frost. Excellent keeper.

2 to 4 ft.

Each.....

**\$1.50**

4 to 6 ft.

Each.....

**\$2.00**

Guthrie, Oklahoma  
Dec. 15, 1944

Benton County Nursery Co.  
Rogers, Arkansas

Dear Sir:

I want to thank you for the Pecan trees that arrived in good condition, also to tell you that trees (fruit and pecan) planted about 5 years ago from you have grown more than any trees in our neighborhood. Those planted last fall are doing nicely. The first were true to name. I have confidence in your firm so know they will be all right. You will hear from us next spring with another order.

Yours truly,

W. C. BROADBENT  
Rt. 5  
Guthrie, Oklahoma



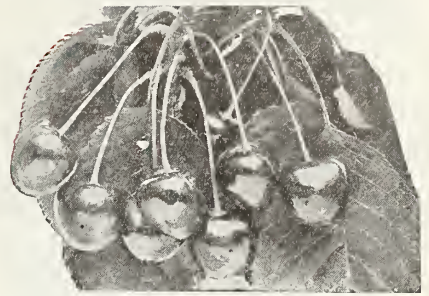
An Orchard  
Will Pay You  
Big Dividends . .

# CHERRIES

SWEET  
SOUR  
HYBRID



Large Montmorency



Schmidt's Bigarreau

## Sweet Varieties

**SCHMIDT'S BIGARREAU** — Very large, bright glossy black; half tender, juicy, rich and fine. Tree a rapid grower and good bearer. Last of June and first of July.

**YELLOW SPANISH**—Tree very large and vigorous, upright spreading. Fruit mid-season, color bright amber-yellow with a reddish blush. Flesh white, with tender aromatic sweet flavor. Freestone. Bears abundantly.

## Sour Varieties

**EARLY RICHMOND**—Everywhere the most popular. Tree strong, thrifty grower, making a large, symmetrical head; fruit medium size, dark red, melting, juicy, sprightly, acid flavor and especially valuable for cooking purposes; tree an early and abundant bearer. Season last of May and first of June.

**ENGLISH MORELLO**—Tree moderate grower, hardy; an early and great bearer; the most valuable of the late varieties. Fruit large, round; skin dark red, becoming nearly black when fully ripe; flesh dark red, tender, juicy and a pleasant sub-acid flavor when fully ripe. July.

**LARGE MONTMORENCY**—A fine large light red cherry of the Richmond class but larger and more solid; a more upright grower, equally hardy and productive. Second only to Early Richmond in value. Ripens ten days later.

## Delicious

### NECTARINES

A most unusually outstanding and delicious fruit. A cross between a peach and a plum. Resembles a peach in shape, size and flavor. As fuzzless as a plum. Fruit is large, juicy and melting. Unequaled either as a fresh fruit or for canning. Flesh fine grained and a beautiful color clear to the pit. Destined to become one of America's most popular tree fruits. Has the same habit of growth and bearing as the peach, and requires the same care.

## We Offer the Three Most Popular Varieties

**SURECROP**—Red freestone underlaid with yellow.

**PINEAPPLE**—Red freestone.

**QUETTA**—Red clingstone.

## HYBRIDS

**COMPASS CHERRY PLUM**—Originated in Minnesota through a cross between the native Sand cherry and the Miner plum. Like the Hansen hybrid plums, it possesses remarkable hardiness combined with enormous productiveness. In appearance the fruit resembles the plum more than the cherry but it has the bright red color of the cherry and the prolific fruiting habit of the Sand cherry. Ripens the last of June.

**ST. ANTHONY**—A Sand cherry hybrid of the breeding of Zumbra cherry. Fruit small to medium, round, dark purplish black; excellent for preserving. Ripens last of July.

## REMEMBER

**WE PAY THE POST-  
AGE ON ALL ORDERS  
WE SHIP WITHIN THE  
UNITED STATES**

**(except balled and bur-  
lapped evergreens)**

## APRICOTS



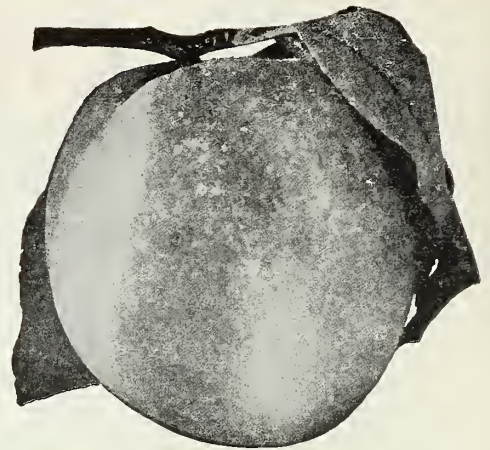
Superb Apricot

**SUPERB**—Medium in size, light salmon color with numerous red or russet dots. Flesh yellow, firm and good. Fairly early.

**MOORPARK**—One of the largest and finest apricots. Yellow with red cheeks; flesh orange, sweet, juicy and rich; parts from the stone. Very productive.



Elberta



Heath Cling

# GROW BIG LUSCIOUS PEACHES

For Cooking, Eating,  
Canning, Market . . .

# PEACH

## Extra Early Variety

**MAYFLOWER**—Medium size, practically red all over; flesh firm and of good flavor; extremely valuable as a very early market sort especially in southern states. Tree blooms very late; upright and good grower; prolific bearer. Earliest known. S-Cling.

## Early Varieties

**EARLY WHEELER**—Semi-cling. Ripens about a week after Mayflower. Of good size, flesh firm, meaty and of fine texture. Color pinkish white on under side and bright crimson next to sun. This is the best peach of its season, and is the first peach to ripen that really comes up to the standard of a first class peach.

**RED BIRD CLING (Very Early)**—As large as Elberta, strikingly handsome and the first big peach that is ready for market. A sensation everywhere; bright glowing red on a background of creamy white; flesh firm, making it an ideal shipper. Early in the season people are fruit hungry and these big handsome peaches bring prices that are almost unbelievable. W. A. Jeffers, a well known Arkansas orchardist, got as high as \$10.00 per bushel for Red Bird. The advent of this glorious peach makes possible tremendous profits. It is so superior to Sneed, Alexander and other poor quality, soft, watery peaches ripening same time.

**MAMIE ROSS**—Freestone, very early, white. The Mamie Ross is a large oval peach with a bright red cheek. The flesh is creamy white, juicy, very firm and the skin tough, making it an unusually good shipping peach for its season. The flavor is rich and extra good. The best quality, very early peach.

**ALTON, EARLY WHITE FREESTONE**—Magnificent white fleeced freestone peach that is larger than Carmen, better quality than Champion and handsomer than any picture ever painted. One of the sweetest and most luscious peaches, and no tree will bear more or bigger crops. L. L. Coleman, a South Missouri orchardist, says: "They have borne every year since they came into bearing. I know one fellow who has had them eight or nine years and they have missed but one crop." E. A. Riehl, of Alton, always gets \$1.50 per bushel for his Altons. Calvin R. Clark, of Scott County, Iowa, says: "Finest peach I ever saw; brought three times as much on the market as my other sorts. Everything considered, Alton is the best and most prolific white peach in propagation."

**EARLY ROSE (Clingstone)**—Ripe middle of June. Fruit brilliant, beautiful red all over. Flesh fine grained, tender and of best quality. Tree vigorous, hardy, and an early bearer. Tends to overload, and should be thinned. Where this is done, the most beautiful peaches can be grown. They carry well and bring the very top price in the markets.

**CARMEN (Freestone)**—The originator says it is either a sister or a seedling of the Elberta; tree of same manner and habit of growth, only has a larger and darker colored foliage; hardy and productive, the fruit is practically rot-proof, as original tree, standing in low, wet ground, has perfected its fruit while other varieties all about have rotted entirely. The fruit is broadly oval in form, large, pointed; skin a yellowish white, slightly tinged with red, of a sprightly vinous flavor. The "Rural New Yorker" first described it some years ago as an extra large yellow peach, like "Elberta" type, but it is not strictly a yellow peach, neither is it white. Size large; juicy, sweet and excellent; productive. Originated in Texas. Tree is a regular bearer. First of July.

**CHINESE CLING (Clingstone)**—Ripe July 20 to 25. A favorite peach; of large size; creamy white with beautiful blush; flesh of the very highest quality; indeed the standard of richness among peaches.

## The Famous

### ELBERTA

Large, yellow with red cheek, flesh yellow, firm, juicy, of high quality. Exceedingly prolific, sure bearer and hardy. Is doing well in all peach sections, North and South. One of the leading market varieties. August 1st.

## Medium Varieties

**CHAMPION (Freestone)**—A western peach of very large size and good quality, also noticeable for the regularity of its bearing. Skin is of a rich, creamy white with a red cheek; flesh creamy white, sweet and delicious, rich and juicy. A most profitable market peach. July 20th.

**BELLE OF GEORGIA**—Very large, skin white, with red cheeks; flesh white, firm and of excellent flavor; the fruit is uniformly large and showy, prolific. Chinese Cling seedling. Freestone.

**J. H. HALE**—Genuine Hale Budded from Bearing J. H. Hale Tree—This new variety has been brought out with more advertising than any other sort for many years, and

from reports is deserving of all that has been said. The fruit as we have seen it: Color is a deep yellow, overspread with carmine, except on the underside; the skin is smooth without much fuzz; the flesh firm, fine grained and unusually solid; parts freely from the stone; the flavor is most delicious, much better than yellow peaches usually run. Ripens a few days before Elberta.

**ELBERTA CLING — Mid-Season Yellow Clingstone**—An immense size yellow peach that looks like Elberta, but is a perfect clingstone. The tree is a sure heavy cropper and the fruit is of superb quality. Flesh firm, excellent shipper; goes on the market in good condition and brings top prices.

**EARLY ELBERTA**—Freestone, mid-season; yellow. The Early Elberta is truly named. It is of the Elberta type, large, golden yellow which is in beautiful contrast to the rich blush on the sunny cheek. The flesh is yellow like the Elberta but far better quality, sweeter and finer grained; higher color and a week earlier—going out as the Elberta is coming in. As a canning peach it has better flavor and color than the regular Elberta.

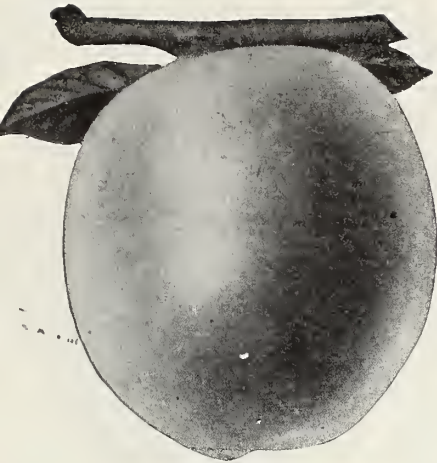
**CRAWFORD'S EARLY**—This magnificent large yellow freestone peach. Good quality and a beauty, which makes it one of the most popular varieties. August.

## Late Varieties

**LATE ELBERTA**—Late yellow freestone. Best sort between Hale and Krummel. Looks just exactly like Elberta, but ripens two weeks after it. Better flavor. One of the best shippers, comes on market when yellow peaches bring top prices. Tree satisfactory in growth, bearing and hardness. It has been one of our most satisfactory varieties. Late peaches are profitable. Fourteen days after Elberta. Cooking, eating, canning, market.

**MAMMOTH HEATH CLING**—Very late white. Best strain of the well known White Heath. Fruit tender, melting, juicy, luscious, firm; does not bruise easily and ships well. Tree good grower, hardy, 40 days after Elberta. Cooking, eating and market.

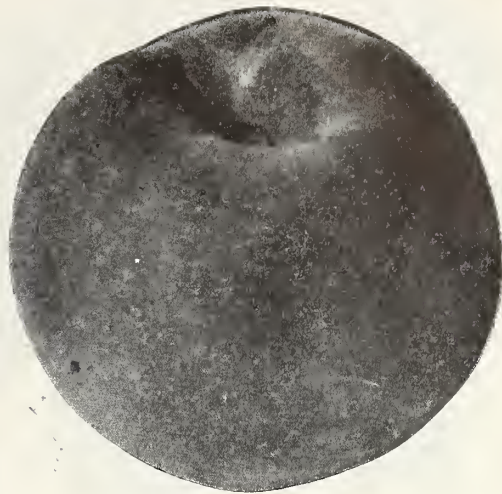
**OLD FASHIONED RED INDIAN**—Cling. Very highly colored, red as blood to the seed. There are many strains of Red Indian peaches on the market and a great many are very small and undesirable. Our buds



J. H. Hale Peach

### Extra Late Variety

**KRUMMEL OCTOBER**—Best Late Peach. Latest yellow freestone. Gloriously red and gold—handsomest, best of all late peaches. Hangs on after all others—full frost. Of great size, almost round, deep yellow, covered with carmine cheeks; luscious, sweet, no bitterness next to the pit. Flesh firm and it ships perfectly. A general favorite for sweet pickles. Tree is a strong grower, extremely hardy, bears young and seldom fails. Everywhere—East, West, North, South, the queen of all late peaches. Late varieties always pay, and Krummel leads in big profits. It comes on the market after all other good freestones are gone and peach lovers gladly pay highest prices for them. Forty days after Elberta. Cooking, eating, canning, market.



Early Crawford

# TREES

from which our Red Indian were grown were cut from a tree that is the very best of all the strains.

**WHITE ENGLISH**—Cling. Ripe latter part of September. Of good size; skin between white and yellow; flesh white, firm, fine texture, juicy and of excellent flavor. There are several types of the White English peach, as is well known. All have their merits, but none will measure up to the one we are now offering. There has been a strong demand for many years for the true White English peach, and after looking over the field for nearly 40 years, we have found it.

## Early, Medium and Late Varieties

**BE SURE TO PLANT SOME OF THE NEWER VARIETIES THIS YEAR**

## NEW BLISS EVERBEARING PEACH

A freestone. Red in color, good size and fine quality; begins to ripen about June 10th and continues until September 15th. A fine peach for home or commercial use.

2-4 ft., \$1.50 each  
4-6 ft., \$2.00 each

### ARKANSAS BLACK

### Another Brand New Peach

The Arkansas Black is the earliest peach known in this section. It ripens before the Mayflower; it is much larger than Mayflower and the most beautiful color we have yet seen for a peach. They are a very dark red getting almost black; clingstone and of good quality. They have a good color for several days before they are ripe, and from the time they are ripe the fine appearance they have and good quality make them sell like hot cakes.

Price: 2-3 ft., 75c each  
\$7.50 per doz.

We are dealers for the **SMITH'S MOTHER NATURE BROODERS.**

Place your order direct with us—  
or if you wish, return the enclosed card for more information about **SMITH'S MOTHER NATURE BROODER.**

Hazen, Ala.  
Benton County Nursery,  
Rogers, Ark.

Dear Sirs:

I thought that you would be pleased to hear that peach trees ordered by me through the Southern Farmer (Ala.), were received promptly and in perfect condition. The yard man who planted them for me said today that every tree has new leaves, and feels certain that each tree will bear fruit in due time. Thanking you for sending such fine specimens, I am,

Cordially,  
MRS. MALENA K. KNIGHT.

## Plant These Promising

### NEW PEACHES

**OCTOBER BEAUTY**—Clingstone. Ripens from 1st to 10th of October. Creamy yellow with red blush. Large; prolific; high quality.

**JUNE ELBERTA (Mikado)**—Ripens about 30 days before Elberta. Yellow with red blush. High quality. Very productive. Semi-cling.

**SOUTH HAVEN**—Freestone. Ripens about 10 days before Elberta. Will bear full crop almost every year when Elbertas fail. Large yellow peach. Good quality.

**HILEY**—Freestone. An early Belle of Georgia peach. Good quality; white with pink blush.

**MURRY BEAUTY**—Freestone. Ripens about 10 days before Elberta. Large, creamy white with deep red blush, yellow meat, good quality and shipper.

**GOLDEN JUBILEE**—Freestone. Ripens about 20 days before Elberta. Yellow peach with deep pink blush. One of the hardiest peaches known.

**HALE HAVEN**—Introduced by the Michigan Experiment Station. A cross between the J. H. Hale and South Haven. Fruit is larger than Elberta, has a deep golden yellow color with an attractive scarlet cheek. A perfect freestone. Flesh firm, juicy and excellent in quality. Ripens 15 days ahead of Elberta.

**GOLDEN SWEET**—Clingstone. Ripens ten days before Elberta. Larger than Elberta. Yellow or gold flesh. Prolific, fine quality.

### New IMPROVED Elberta

**NEW IMPROVED ELBERTA**—The fruit is almost round, with deep red blush on the side; it is easily 4 to 5 inches in diameter with excellent flavor. A few years ago a local fruit man gave \$5.00 for a bushel (when he could and was buying ordinary Elbertas for \$1.50 to \$2.00 per bushel), which was presented to the president of the Frisco Railroad Co. This fruit dealer was informed by the railroad officials that they could place a carload of that quality of Elbertas and pay the grower \$5.00 per bushel if they could be had.

Price: Listed under improved varieties is enclosed Price List.

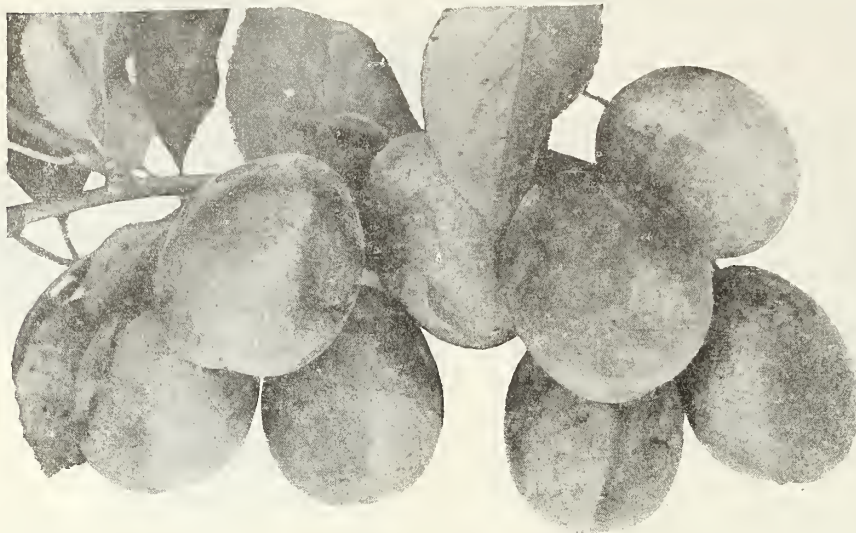
**Remember, We Pay the Postage on All Orders**  
Except Balled and Burlapped Evergreens

**OUR GUARANTEE**

is that you must be satisfied or your money will be refunded or we will replace free of charge (optional with us) any claim for nursery stock you purchase from us that is not what we represent it to be. Upon receipt of any stock ordered from us that is not entirely satisfactory, return it to us and we will refund your money plus the transportation charges paid by you on the returned shipment.

You must follow the instructions for planting that are enclosed with each order sent to you.

All claims except stock not true to name must be made by May 1st next to planting.



Burbank Plums

# PLUM TREES

## STANDARD VARIETIES

**AMERICA**—Very early, hybrid. A full brother of Gold, the sensational \$3,000 plum. Same parentage—a cross between Burbank and Robinson (Native). From the far-reaching experimental hybridizing of 20,000,000 cross-bred seedlings by the great scientist, Luther Burbank, came two grand plums—Gold and America; it was then plum growing received its greatest impetus. America is large, glossy, coral red, one of the most beautiful and delicious plums ever grown. In our orchard it is the one variety that can always be depended upon for a crop. Tree large, very vigorous, thoroughly hardy, bears extremely young, and bears enormous crops every year. Succeeds everywhere. Eating, cooking, market.

"\$4.00 per bushel. Heads the list as usual. Bent to the ground with large, handsome fruit. Visitors can scarcely believe their own eyes. Eight-year trees bore three bushels each that brought \$4.00 per bushel. Good quality and does not rot. Sturdy grower and exceptionally hardy."—E. H. Riehl, Illinois Experiment Station.

**BURBANK**—Large, nearly globular, clear cherry red with thin lilac bloom; flesh deep yellow; rich, very sweet with a peculiar and agreeable flavor. Vigorous and a very early bearer. Last of July.

**BRUCE**—Large, red, productive. Early ripening, firm shipping quality, productiveness and deliciousness of flavor.

**DAMSON**—A medium sized dark purple variety which is very productive; esteemed for preserving and good for eating out of hand. Ripens late August to early September.

**EARLY GOLD (Shiro)**—Very early. Hybrid. A pure transparent golden yellow plum, large and handsome—a huge honey drop; sweet, excellent quality. Tree hardy, bears regularly; immense crops, and is satisfactory in every way. A tree loaded with this golden fruit is a wonderful sight. Propagated from a heavy bearing strain on our own grounds. Another Burbank production that has made good. It is a great favorite in the South because of its high resistance to fungus diseases.

**GOLDEN (Gold)**—From twenty million native, hybrid and cross-bred seedlings, grown by himself, Luther Burbank made this his first choice. This was also his first great origination; and though since he produced many, many fruits, never has he produced one that can surpass or equal in all respects the Golden. Though a small dwarf-like tree, with small slender limbs, this is one of the hardiest, strongest trees. The finest plums and one of the most beautiful, a light transparent golden yellow, almost covered with a lovely blush. In nearly every state of the Union this plum has been fruited and from them all come fine reports. This plum is at its best on dry, thin or clay soil. Leave it on the tree until it becomes highly colored and then it is delicious.

**HANSKA PLUM**—The color of the Hanska when fully ripe is a deep bright red, with firm flesh and of high quality. When fully ripe they are fragrant like the apricot and when cooked the strong apricot flavor is brought out to perfection, entirely unlike any native plum. The fruit has a small pit. The tree is a profuse bloomer, grows tall and is rapid growth. The trees often bear when they are only two and three years old. Freestone.

**LEE'S BLUE**—Very rich in color and quality. Freestone. Ripens the same time as the America. Be sure to try this one.

Gillham, Arkansas  
January 9, 1945

Benton County Nursery Co., Inc.  
Rogers, Arkansas

Dear Sir:

We received our shipment of trees, vines, and bulbs and are well pleased with them. We were fixing to send an order to another Nursery and our neighbor come over and insisted we try you all with an order so we did with a small one and we are going to order more. You were recommended to us by Everett Brewer, at Gillham, Arkansas. He received his trees about four weeks ago and brought over one to show us how nice they were.

Yours,  
BEN PETTY

**OPATA**—A rich dark red oblong plum that is very delicious. Bears prolifically. Tree is tall, upright growing. An excellent variety for home and market use.

**RED JUNE**—The best plum, ripening before Abundance. Medium to large; deep vermilion red, with handsome blooms, flesh light lemon-yellow, firm; moderately juicy; fine quality. Tree upright, spreading, vigorous and hardy; productive.

**STANLEY PRUNE**—Medium large; purplish-black; blue bloom; free; flesh greenish-yellow, juicy, sweet and of good quality; will hang on tree after ripening; splendid for drying and market. Tree very productive. September.

**WANETA**—Regarded as the largest and best all around newer sort. Bright red delicious quality, small pit, skin free from acidity, very productive and an early bearer, often producing fruit two inches in diameter. This is Prof. Hansen's masterpiece in plums and you will make no mistake in planting them liberally.

## FIGS

**EVERBEARING FIG**—Ripens its fruit from July until frost and each tree will produce fruit first year. Bears on its new growth. Light straw to brown in color, medium size and very sweet. Does not crack easily. Extra good for preserves or eating fresh.

**MAGNOLIA**—July, August and September. Large, pale green or white; shape varies from ordinary fig shape to very short or flat; always bears at one year old, and if frozen will bear on the young wood the first year. In some sections it is called Never-fail.

Figs should be planted more extensively. Do not let the sprouts or suckers grow, but prune the trees so as to have clean bodies at least two feet high. Cut tops back to six or twelve inches above the ground when planting. Such trees will bear fruit and will stand much colder weather than if the sprouts are allowed to grow.



California



Red Stayman



Montmorency

## Fruit Special

### NUMBER 4

- 1 Lee's Blue Plum
- 2 Fredonia Grape
- 1 Early Richmond Cherry
- 1 California Apricot
- 1 South Haven Peach
- 1 Red Stayman Apple
- 1 Montmorency Cherry
- 1 Red Jonathan Apple

Size 3 to 4 feet

PRICE

**\$6<sup>05</sup>**

POSTPAID



South Haven



Lee's Blue

Fredonia

Early Richmond

**RASPBERRY  
AND  
BOYSENBERRY  
SPECIAL**

- 25 Latham Raspberries
- 25 Cumberland Raspberries
- 50 Boysenberries

**\$385**

POSTPAID



Boysenberries



Latham

**HOME  
GARDEN  
STRAWBERRY  
SPECIAL**

- 25 Aroma
- 50 Blakemore
- 25 Gem Everbearing

**\$360**

POSTPAID



Blakemore



Ozark  
Beauty

**BLACKBERRY  
SPECIAL**

- 25 Early King
- 50 Ozark Beauty
- 25 Dallas

**\$330**

POSTPAID

# Pears--Delicious Right from the Trees

## Fine for Canning--Profitable for Commercial Growers



Bartlett

### Culture

Pears will grow on almost any soil but will do best on a high elevation, provided the sub-soil is not too wet. Wherever this is the case the ground should be thoroughly under drained. In very poor soil a heavy top dressing of manure in the fall will be of advantage. Standard pear trees should be planted twenty feet apart each way.

Pears are subject to fire blight, a disease controlled only by cutting back the branches beyond the point of injury.

Do not allow pears to ripen on the trees. The highest quality results from gathering fruit ten days before it is ripe. Winter pears are best stored before the heavy frost.

### Early Varieties

**BARTLETT**—Large size, with beautiful blush next to the sun; buttery; very juicy, and highly flavored; bears early. August and September.

**WILDER EARLY**—One of the very earliest pears. Size medium greenish yellow, with a brownish red cheek and numerous dots; flesh white, fine grained, melting, excellent. Always finds a ready sale in market. Largely grown by commercial orchardists. Tree bears good crops early and annually. August and September.



### SEEDLESS PEAR

Brand new variety. Practically seedless. Solid all the way through. Ideal for canning. No waste. It is of the Bartlett type, pure white flesh with yellow blushed skin. Ripens 10 days later than Bartlett, and trees bear when three years old. A 5-year tree known to bear 3 bushels of fruit.

**2 to 4 ft. size, \$1.75 ea.**

### Autumn Varieties

**GARBER**—Very large, oval, narrowing at both ends; yellow as an orange; flesh whitish, juicy, sweet and very pleasant. Tree an upright grower with heavy, dark green foliage. September.

**KIEFFER**—Large, golden yellow, often blushed in the sun; juicy and melting. One of the best for preserving and canning; the most profitable to grow. Tree healthy, hardy and vigorous. It is liable to overbear, therefore special pains should be taken to thin the fruit.

**DOUGLAS**—Blight proof; will bear fruit second year after planting; is very productive. The fruit is larger than Kieffer or Bartlett. The color is golden yellow, often with pink shading. The flesh is white, very tender and juicy and excellent flavor.

**SECKEL (Sugar Pear)**—Yellowish russet, rather small size with red cheek. Flesh white, and very juicy and sweet. Ripens in August. Fine for pickling.



Kieffer Pears

We are dealers of

**J. A. SMITH MOTHER  
NATURE BROODERS**

## MULBERRIES

**DOWNING**—Fruit is rich, sub-acid flavor, lasts six weeks. Stands winter of western middle states.

**HICKS**—Wonderfully prolific; fruit sweet, excellent for poultry and hogs. Fruit produced during four months.

Route 1,  
House Springs, Mo.

Benton County Nursery Co.,  
Rogers, Arkansas.

Dear Sirs:

The enclosed picture, taken in August, 1942, shows a Douglas Pear tree purchased from Benton County Nursery in 1941. Plainly visible in the picture are ten large pears; two others, for a total of twelve, are not visible.

Notice the sticks required to support the heavy weight of the fruit. This tree was a source of amazement for visitors from nearby St. Louis all summer.

Sincerely,

P. NOVELLY.



Mrs. P. Novelly and Douglas Pear Tree

# Enjoy Plenty of Ozark BERRIES

Fresh from Your  
Own Garden.....



New Logan Black Raspberries

## RASPBERRIES

### Purple Varieties

**SODUS**—An excellent home use berry, delicious for dessert, canning, preserves, jelly, etc. A very large, juicy fruit, a fruit that is easily grown and very hardy, adapted to cold and dry weather; does not have many briars, and yields very heavily.



Gooseberries

### GOOSEBERRIES

Gooseberries should be planted in good, rich soil and well manured once a year. Prune regularly, thoroughly cutting out all dead wood and surplus branches. Plant in rows 4 to 6 feet apart in row. It is well to mulch heavily in the fall. Plants are hardy, rugged and easily grown.

**OREGON CHAMPION GOOSEBERRY**—Berries very large, brownish red color, very sweet and fine for table use and pies. Bush a strong grower, healthy, not very thorny and a prolific bearer. One of the best berries for the market.

**HOUGHTON**—A medium sized American variety which bears abundant and regular crops and never mildews; fruit smooth; red, tender, and very good; valuable.

SEE PRICE LIST ATTACHED  
TO THIS CATALOG

### Black Varieties

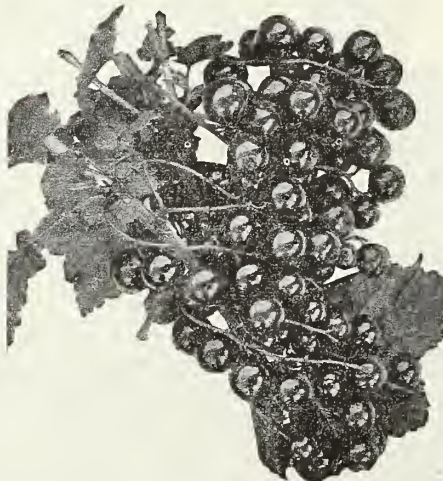
**CUMBERLAND**—The largest of all the black-caps; coal black berries; very firm and the quality of the very best; excellent shipper. Bush is a strong grower, stocky canes and unusually prolific. Mid-season.

**NEW LOGAN BLACKCAP**—The best dependable early black raspberry grown. In some localities where it has been grown for the past few years it has almost displaced the other standard varieties. Berries are as large as the Cumberland, bears as heavily and ripens a week ahead of Cumberland. This gives the grower a chance to make some really good money. One of the New Logan's outstanding characteristics is its resistance to mosaic and other raspberry diseases. We have a fine lot of thrifty plants to offer.

#### Gentlemen:

I recently purchased 15 Chief Raspberry plants. I set them in new ground and have raised three hundred plants from them. We have picked 25 quarts of berries from them and the quality was excellent.

I will remember the Benton County Nursery Company when I want more nursery stock.  
Star Route ARCH WOOD,  
Dorsey, Ill.



Perfection Currants

### Red Varieties

**ST. REGIS EVERBEARING**—The new everbearing variety. It gives a crop of fruit all summer and autumn, fruiting on the old canes in generous quantities until late in August. By this date berries begin to ripen on the young canes and continue until late autumn. Berries are a bright crimson of large size and of surpassing quality, sugary with full raspberry flavor. It succeeds upon all soils, whether light and sandy, or cold, heavy clay and the canes are absolutely hardy.

**LATHAM (Minnesota No. 4)**—A new introduction from the Minnesota state breeding farm. A very firm, large and most prolific red raspberry yet introduced. It is extremely hardy and of the very best quality. It has been largely planted in Minnesota and has given the best results. It stands shipping well and tops the market. It is mosaic-free, a disease that attacks raspberries sometimes. Plant some in your garden. You will never regret it. It is claimed that many fruit growers are averaging \$1,000 per acre a year.

**CHIEF (The New Red Raspberry)**—Here is a wonderful red raspberry that is forging ahead as fast as did its illustrious ancestor, Latham, and it has just as important a place to fill for it is ten days earlier than Latham, ripening at a time when red raspberries bring the most on all markets. Chief was originated at Minnesota State Fruit Breeding Farm and is a selection from 4,000 seedlings of Latham. It is immensely productive, even surpassing Latham in that respect; the berries are of good size and excellent quality and the bushes are absolutely hardy and resistant to disease.

#### Records Made with Red Raspberries

One acre St. Regis produced 186 crates that sold for \$630.00, and the same acre produced 75 crates in the fall that sold for more than \$200.00. Grown and sold by Austin Cline, Garfield, Arkansas.

### CURRENTS

The currant is one of the most valuable of the small fruits. They mature just before raspberries and can be used either raw or cooked. Being very hardy, they do not winter kill and are easy of cultivation, requiring little care. They can be grown in any good garden soil.

**PERFECTION (Red)**—This truly wonderful new currant has both large size and extra good quality. Perfectly healthy; a vigorous grower, and in fact an extra fine red currant in every way. Widely advertised all over the country.

ENCLOSED PRICE LIST CANCELS  
ALL PREVIOUS QUOTATIONS





Blakemore

## MAY TIME

Introduced as the highest quality extra early berry and recommended as far west as Oklahoma and Kansas. May Time is usually fruited 4 to 8 days earlier than the old early varieties, as it is equal to the best standard berries in firmness, beauty, and dessert quality. The color is darker than the Blakemore and lighter than the Premier. They do not turn dark on holding.

**SENATOR DUNLAP**—This is a great producer and a money maker and a good, all purpose variety. Easy to grow, just the thing for the beginner. Will grow a full crop on most any kind of soil. Is considered one of the very best for canning and home use. Exceedingly productive, plants small but have long roots that make it a sure cropper and a drought resister. We have a wonderful productive strain of Dunlap that never fails to please.

## Everbearing Variety

**GEM**—The universal everbearer, an old favorite; succeeds in all soils and climates except in the extreme south; fruits heavily the first season the plants are set; very heavy cropper of medium large, sweet, mild, and beautifully colored berries. Grow it in hills or narrow rows.

# Strawberries

*Have Them Fresh and Luscious  
from Your Own Garden*

**BLAKEMORE**—The new strawberry that is creating a sensation among strawberry growers everywhere it has been grown. This berry, originated by the U. S. Department of Agriculture, is a cross of Premier and Missionary. The berries are slightly blunted, conic with broad shoulders, slight neck, much firmer than Premier or Klondike, Blakemore has proven considerably superior as a market variety. Berries are bright red color, tough skin, firm flesh, solid center, with excellent flavor; very productive, fine shipper and earlier than Klondike; blooms later and will escape frost when Klondikes are killed.

**PREMIER**—The Premier is one of the most popular varieties that we offer and it well deserves all the praise that can be given it, for several reasons: 1. Premier is among the first to ripen. 2. Fruit large size and deep red color. 3. Firm flesh and excellent quality. 4. Heavy yielder and makes thrifty growth. 5. You can depend on Premier for a good crop when other varieties are a failure. 6. Foliage is not susceptible to the leaf spot which has ruined many strawberry patches. We unhesitatingly recommend the Premier for either home or commercial planting.

**AROMA**—An old standby that we have been growing for over thirty years. The demand for Aroma plants is tremendous, there is never enough to supply the demand. In matters of productiveness, quality, flavor and market value, the Aroma is so much superior to the other old standard late varieties that we urge our customers to plant Aroma heavily and increase their profits by prolonging their berry season.

**KLONDIKE (Improved)**—This is the standard berry for the southern and middle states and does fairly well in the northern states. Productive, brilliantly colored and so firm that on the northern market it classes a re-shipper; that is, a berry firm enough to re-ship to the smaller tributary markets and therefore commands top-notch prices.

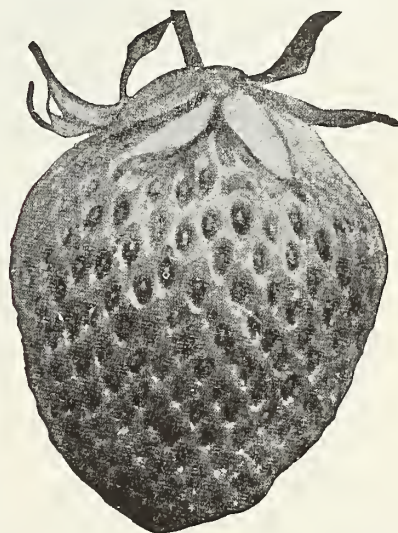
Chicago, Ill.

Gentlemen,

Very early this year I ordered some little trees, strawberry plants, etc., and they arrived earlier than I expected. At your suggestion I 'Heeled' them in and want you to know everything survived and thrived 100%.

Please keep me on your mailing list.  
Thank you.

WILBUR CRONWELL.



Premier

## OUR GUARANTEE

is that you must be satisfied or your money will be refunded or we will replace free of charge (optional with us) any claim for nursery stock you purchase from us that is not what we represent it to be. Upon receipt of any stock ordered from us that is not entirely satisfactory, return it to us and we will refund your money plus the transportation charges paid by you on the returned shipment.

You must follow the instructions for planting that are enclosed with each order sent to you.

All claims except stock not true to name must be made by May 1st next to planting.



Youngberry

## YOUNGBERRY

The new Youngberry has achieved great success. It not only bears heavily but the fruit is easy to handle; it is very attractive, ships well, keeps well and cans well. It has so many commercial possibilities and it fits in so well in the home garden that everybody should be interested in having a few vines or a commercial planting. The Youngberry is the result of the careful and patient efforts of Mr. Young in crossing the Loganberry and the Texas Dewberry. It has given the world a choice berry with characteristics in size, appearance, flavor and general usefulness that has opened new possibilities in berry culture.

Youngberries are universally liked and easily grown. They are among the largest berries; of dark wine color, have a minimum of seed, highly flavored and yield a rich looking cherry colored juice. In the home garden you will find that more fruit will be produced from a few Youngberry vines than any others that will grow on the same amount of ground. Youngberries thrive where any other berry fruits grow but do best in states of the same latitudes as Ohio and south.

There is a great and increasing demand for Youngberries. There is no fruit capable of yielding greater profit. There will usually be from 150 to as high as 250 cases of 24 quarts from an acre, and that is usually consistent to figure on an average of \$100 to \$150 per acre after paying for picking, boxes and express.

For field culture plant three feet apart in rows six feet apart. For garden culture plant four feet apart in rows five feet apart.

### Thornless Youngberry

A sport of the common type and is almost identical except that the canes are entirely thornless, and as smooth as velvet to handle with the bare hands. This, of course, is a decided advantage both when training and trimming canes or when picking the fruit. During past severe winters the "Thornless" Youngberry has proven considerably harder than the common. Yield is very heavy; in fact, a one-year plot test showed the Thornless type to outyield the common Youngberry by twenty per cent.

Each, 15c; Dozen, \$1.50; 100, \$10.00

### OUR GUARANTEE

is that you must be satisfied or your money will be refunded or we will replace free of charge (optional with us) any claim for nursery stock you purchase from us that is not what we represent it to be. Upon receipt of any stock ordered from us that is not entirely satisfactory, return it to us and we will refund your money plus the transportation charges paid by you on the returned shipment.

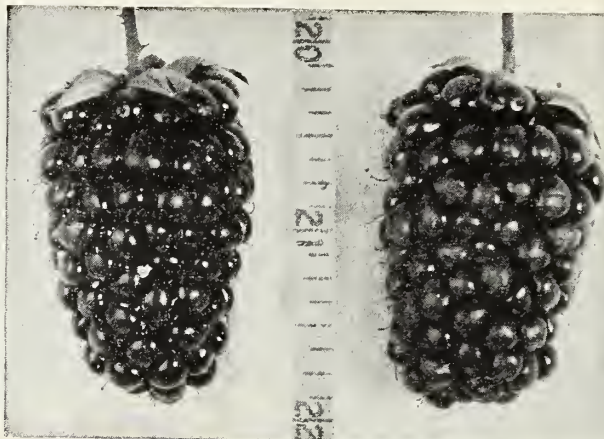
You must follow the instructions for planting that are enclosed with each order sent to you.

All claims except stock not true to name must be made by May 1st next to planting.

### EVERBEARING BLACKBERRY

—This new everbearing blackberry is one of the latest creations in blackberries. They bear enormous crops for three months, beginning to ripen just after the Early Harvest and continue almost until frost; the berry is very large, of fine quality, melting in your mouth and does not have the large core than is so common in so many kinds of blackberries. The canes are husky growing plants, standing erect, resembling small trees from 6 to 8 feet high and branch heavily. We have only a very few for the market this year.

20c each; \$2.00 per doz.



Boysenberry (Actual Size)

## BLACKBERRIES

**ALFRED**—Berries are large, often 1½ inches long, of exceptionally fine flavor, almost coreless. A heavy bearer, extremely hardy.

**DALLAS BLACKBERRY**—A Texas berry, large, black, firm and a strong grower. Ripens in midseason.

**EARLY KING**—One of the earliest blackberries in cultivation, a compact, dwarf grower, fruit rather small and of good quality; heavy bearer.

**ELDORADO**—For many years Eldorado was the first main-crop variety to ripen; it has, with other notable virtues, great hardiness and freedom from blackberry rust in the plant, and handsome appearance and exceptionally high quality in the fruit. Although an old sort, it is still much prized for home and market east of the Rocky Mountains, and in this great region very seldom fails.

**LAWTON**—Berries large, soft, sweet, very good. Season medium. The bush is very vigorous, half hardy, and productive.

**MCDONALD**—Enormously productive, outyielding any other known variety of blackberry. Ripens two weeks before Early Harvest, and is the earliest ripening of all blackberries. Can be sold for extra price before other varieties are on the market.

**OZARK BEAUTY**—Superior to any blackberry grown where it has become known, this blackberry is hardy, stands drouth. It is almost free from seeds and has no objectionable core. It has little or no juice, the pits being filled with thick syrup or flesh of the berry. Ripens just after Early Harvest. The berries are very large and best quality. You will make no mistake in ordering Ozark Beauty.



Alfred Blackberry

# Make Big Profits By Planting OZARK GROWN BER

## BOYSENBERRY

Said to be the largest and finest vine berry ever introduced. The Boysenberry is a new variety produced by crossing blackberries raspberries and Loganberries. The flavor is a very pleasing blend of these varieties. It has few and soft seeds. The plant is very vigorous and hardy, coming through in good condition, without injury, in temperatures as low as 10 below zero. The berries are extremely large, many of the berries getting more than two inches long and over one inch in diameter.

This answer is published in the Arkansas Gazette in Questions and Answers:

Q. What berry produces the largest fruit?

A. The boysenberry is the largest of all berries, often reaching a length of two inches. It was originated by Rudolph Boysen, superintendent of Parks, at Anaheim, Calif., and is a compound hybrid.

### Sensational THORNLESS BOYSENBERRY

Probably the biggest berry ever developed. Imagine berries 1½ to 2 inches long, so large that 20 make a pint, and are so productive that 100 plants produce 50 gallons of fruit the second summer. That is the record of Boysenberry. The beautiful wine-red fruit combines the delicious flavors of Loganberry, Blackberry and Raspberry, of which it is a cross. No new fruit in many years has caused such a sensation as Boysenberry. In addition to all these remarkable qualities, the plants we offer here have NO THORNS.

## Read What This Customer Says

Benton County Nursery,  
Rogers, Ark.

Bridgeton, N. J.

Gentlemen:

In the spring of 1939 I bought twenty-four fruit trees from you—apple, peach, pear and plum trees.

I never lost a tree and the growth they have made is wonderful. I have been buying stock for the last twenty years from companies from all parts of the United States and you gave me the best bargain I ever bought in fruit trees.

They were packed so they would carry two weeks without being dry—no stunted or moss covered trees in your stock.

Respectfully,

W. T. MORRIS,  
614 Chestnut Ave.

# RIES

## Guaranteed



Early King

**THE NEW THORNLESS BLACKBERRY**—Entirely free from thorns and one of the best flavored berries. Bears heavily and grows well in all sections. Be sure to plant some this year. Price: 15c each; \$1.25 per dozen; \$10.00 per 100.

**THORNLESS DEWBERRY**—Perfectly free from thorns; berries are of very best quality, large in size, rich and juicy, and early.

15c each; \$1.25 per dozen; \$12.00 per 100.



Ozark Beauty

### DEWBERRIES

**AUSTIN**—Berries much larger than those of any other Dewberry or Blackberry. It requires no trellis or stakes. The fruit is jet black and of very superior quality and flavor. For productiveness it out rivals all Dewberries.

**LUCRETIA**—Fruit very large, luscious and sweet; perfectly hardy, healthy, enormously productive; a very prolific market fruit; the vines should be allowed to remain on the ground during the winter and staked up early in the spring. Fruit ripens early, is often one and one-half inches long.

**PROLIFIC**—Berries much larger than those of any other Dewberry or Blackberry. It requires no trellis or stakes. The fruit is jet black and of very superior quality and flavor. For productiveness it out rivals all Dewberries.

See Separate Price List.

Please do not send postage stamps in payment of your order as we use a postage meter for our mailings.

Omega, Oklahoma

Benton County Nursery Co., Inc.

Rogers, Arkansas.

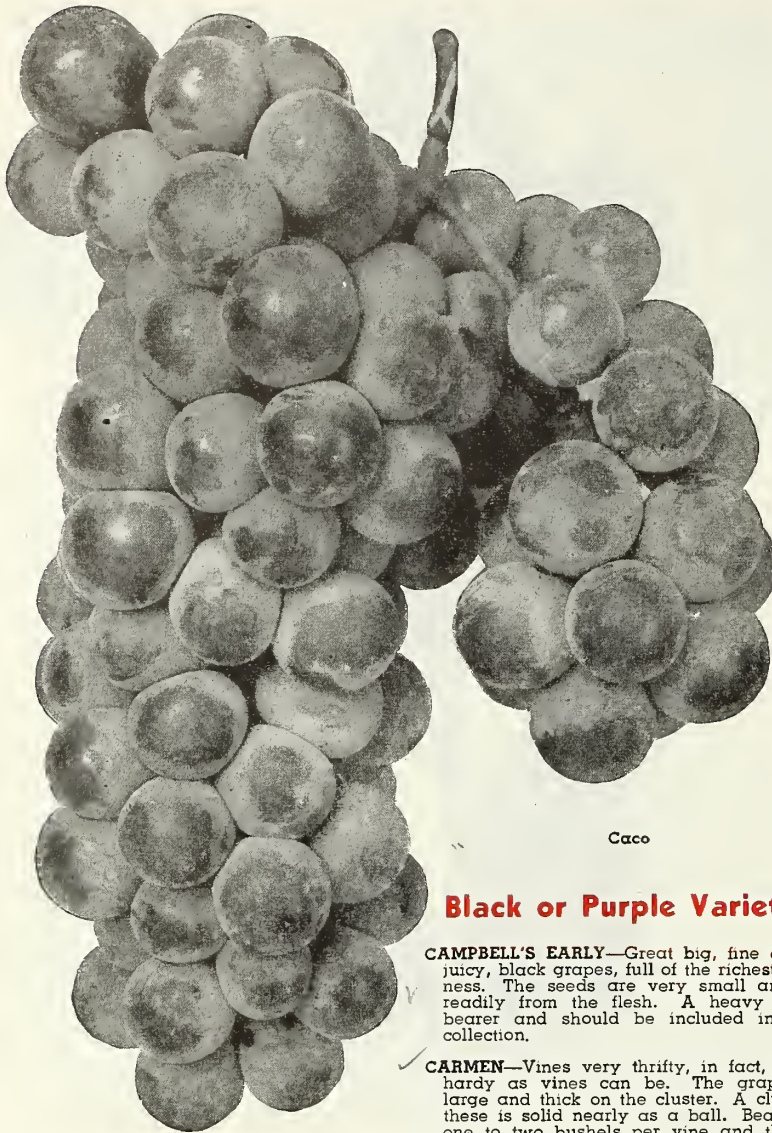
Dear Sir:

I ordered some berries from you last year and just enclosed the cash, there was some change coming to me so I told you to send me roses for the balance. My roses were large, hardy and well rooted, they started right out, made a wonderful growth and bloomed profusely until freezing. I am ordering some more this spring to complete my rose garden. Thanking you for past favors.

Respectfully,

MRS. E. H. McCANDLESS.

# GRAPES



Caco

## Black or Purple Varieties

**CAMPBELL'S EARLY**—Great big, fine colored, juicy, black grapes, full of the richest sweetness. The seeds are very small and part readily from the flesh. A heavy annual bearer and should be included in every collection.

**CARMEN**—Vines very thrifty, in fact, just as hardy as vines can be. The grapes are large and thick on the cluster. A cluster of these is solid nearly as a ball. Bears from one to two bushels per vine and the best eating grape we have ever seen. If you have been planting grapes that would not sell, plant some Carmen. They outsell anything else on the market. The Carmen grape begins to get ripe about August 10th and will hang on the vines after getting ripe, for several days.

**CYNTHIANA**—The best red wine grape known. We say the best because red wine made from this variety, grown at Bushburg, Mo., about 25 miles south of St. Louis on the Mississippi River, won first prize at the World's Exposition at Vienna, Austria, as the best red wine from all nations. This grape originated right here in Benton County, Arkansas. A very vigorous grower; for making grape arbors it is without an equal. For high, dry countries it appears to be at home as well as on the creek and river bottoms. It does not require a rich soil, but prefers a dry soil of moderate fertility. It is so sweet it is almost too rich to eat out of hand. It has a higher content of sugar than any grape known. The berries are about the size of the Delaware, while the clusters are large; color is black covered with blue bloom.

## White Varieties

**NIAGARA**—Occupies the same position among the white varieties as Concord among the black. Bunch and berries large, greenish white, changing to pale yellow when fully ripe. Skin thin but tough; quality much like the Concord.

## MUSCADINE CLASS

**SCUPPERNONG**—Large, whitish yellow, good quality; bunches small, very productive and is considered one of the best wine grapes.

**THOMAS**—Muscadine type; color reddish purple; excellent flavor; tender and sweet; ripens in June.  
50c each; \$5.00 per doz.

## Red Varieties

**DELAWARE**—The bunches are small, compact, and sometimes shouldered; berries are small with thin but firm skin; flesh juicy, very sweet and refreshing and of the best quality for both table use and for wine. Ripens with Concord or a little before; vine is hardy, productive and a moderate grower.

**BRIGHTON**—Bunch large, shouldered; berries medium to large, round dark red, tender, very little pulp, sweet, juicy, slightly aromatic and very good. Ripens early.

## Our Four Best Grapes . . .

**CACO GRAPE**, called by some the "Delicious"

—This excellent grape is one of the most beautiful in color of any grape grown. The color is a deep red wine color; the berries are large and bunches of good size; ripens a week or ten days before Concord. It is so rich in sugar that it has an excellent flavor two weeks before it is fully ripe. The vine is a very strong, vigorous grower, healthy and prolific; the most productive of any grape grown in our experimental vineyards. It produces more bushels per acre than Concord and will sell for much more for a table grape; and for a wine grape it is claimed by some who know the value of grapes for wine to be the very best grape grown for wine and champagne. Very few varieties of grapes grown in America will make good champagne. This grape never cracks on the vines as many others do.

**FREDONIA**—The new, very early black grape.

Earlier than Eclipse, larger and better quality. Earlier than Campbell's or Moore's Early; originated at the New York Experiment Station; has been thoroughly tested in their vineyards where over 75 varieties are fruiting and has proven superior in every way to any other early black grape. It is fruiting at the Arkansas Experiment Station along with many other varieties, where it appears to be the best of all early grapes. Flavor excellent, juicy, retaining its fine quality long after it has become fully ripe; hangs on for weeks after fully ripe. Very large, compact clusters, covered with a productive and the earliest black grape grown.

**PORTLAND GRAPE (New)**—This is a new

white grape, originated at the New York Experiment Station, Fredonia, New York. The earliest of all grapes, which means high prices on the market, with large bunches and also berries. Flesh sweet, juicy and of fine flavor and superior quality. The vine is a vigorous grower, healthy and hardy. The experiment station speaks very highly of it. Try this variety and we are sure you will not be disappointed.

**EVERBEARING CYNTHIANA**—This new Ever-

bearing grape begins to ripen about the time the Concord does, and continues until frost. Has ripe grapes, green ones and blooms on it all the time after they begin to get ripe until the growing season is ended by frost. The grapes are same size and quality as the Cynthiana.

ENCLOSED PRICE LIST  
CANCELS ALL PREVIOUS  
QUOTATIONS

## EVERBEARING SPECIAL

- 25 Everbearing (Gem) Strawberries
- 10 Everbearing Blackberries
- 10 Everbearing St. Regis Raspberries
- 3 Cynthiana Grape Vines
- 2 Texas Everbearing Figs
- 1 Perkins Everbearing Apple
- 1 Bliss Everbearing Peach

All for Only \$10.00

**Bear Every Year  
Last a Lifetime  
Grow Everywhere  
Everybody Likes Them**

## **CONCORD**

### **Rightfully Called The King of Grapes**

This variety grows and bears well on any kind of soil, high or low lands, stony or smooth lands, sandy or gumbo lands. It is the most widely known and most popular of grapes.

Bunches are large and compact, berries are large, round, and almost black, covered with blue blooms. Skin is thin, flesh sweet, pulpy and tender, quality good, very prolific and a good grower. Concord begins to get ripe about July 25th and continues for about three weeks.

This is the leading variety that is making the grape growers rich. It is grown extensively in Arkansas and Missouri for table grapes; is grown in Iowa, Michigan and New York extensively and sold to grape juice factories.

You will not make a mistake in planting largely of this variety; vines do well on arbors, walk shades, back yard fences, etc. Planted 6 to 8 feet apart, around your home, in back yard, etc., a few vines are valuable for quick and everlasting shade and for a perpetual source of fine grapes.

Some vineyards are producing more than \$150 worth per acre before they are out three years. In many instances the first crop will yield enough fruit to pay for the land they are growing on, for the vines and for all the cultivation and hoeing that has been done on the vineyard.

Grape vines are said to be longer lived than apple trees. It is claimed from good authority that grape vines will grow and produce valuable crops from 50 to 75 years.

They bear full crops when other fruits fail, when long drouths cause a failure in grain and cotton crops. In fact, they are the most dependable for paying crop of anything in the agricultural line.

The larger part of the vineyards planted and being planted are being set 8 feet in the rows and making the rows 10 feet wide, requiring 545 vines to plant an acre. Vines begin to bear within one year after planting them. The two-year vines often bear fruit in the nursery rows.

### **PLANT BEARING-SIZE VINES . . .**

You can realize your desire to have grapes from your own vines, a lot of them, next year, and a few this year, too, by planting "Bearing Size" Grape Vines.

"Bearing Size" Grape Vines are simply selected vines that are properly cultivated, sprayed and pruned for two years. They would bear their first crop this fall if left where they are.



Concord

They are grown especially for gardeners who want vines that will bear in as short time after planting as practical.

"Bearing Size" Grape Vines have vigorous canes, and a heavy mass of roots to correspond. They are dug, handled and packed with extreme care, so as to save all the roots, preserve the canes without injury, and get the vines into your hands in perfect condition to plant.

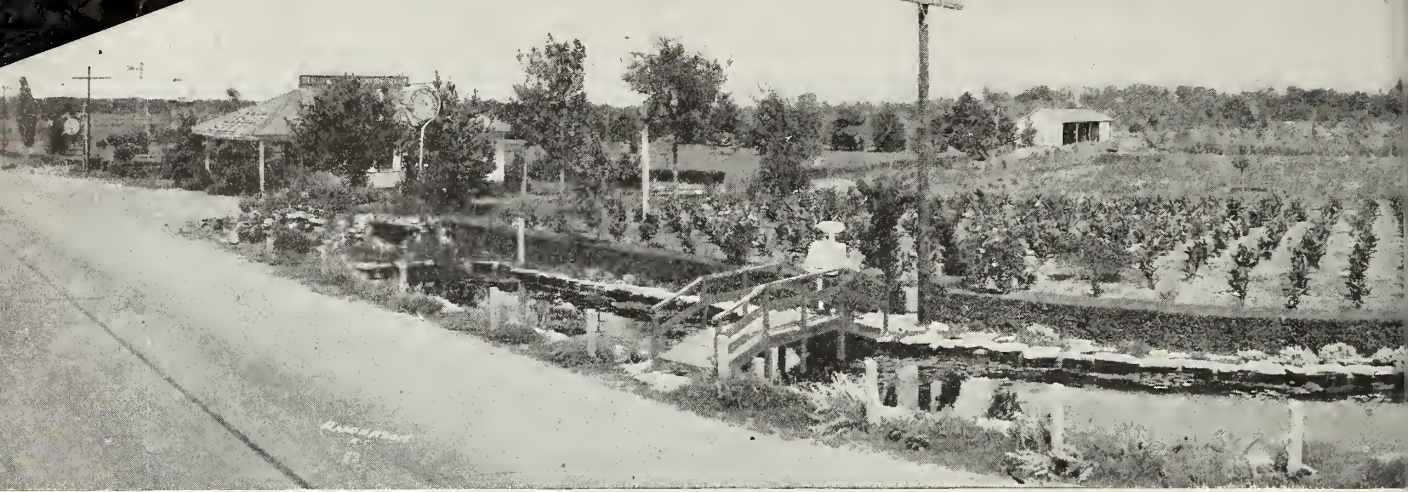
If carefully planted, spreading the roots naturally in moist, rich soil, and cutting the canes back about one-half, they will bear some grapes the same season planted, and produce nearly a full crop the next.

If we are out of any items your order calls for we will substitute with one as good or better, unless you tell us not to substitute.

### **AND GRAPE VINES OF SUPERIOR QUALITY . . .**

These "Bearing Size" Grape Vines are produced by planting cuttings taken from vineyards that are famed for their production of quality grapes. The cuttings are set in our planting grounds here in the mountains. In this fertile soil, with its bracing atmosphere and long growing season, and with the best care of cultivation, these develop into extremely hardy, vigorous stock that makes rapid growth and produces wonderful crops of grapes, wherever planted.

Order at least a few vines of each variety described in this catalog. This will give you an assortment of red, white, blue and black, as well as early, midseason and late. A vineyard that will prove a source of pride, pleasure and profit to you as long as you live.



## What We Are . . .

We are natives of Arkansas, born and reared on farms in the Ozarks and our forefathers as far back as we can trace have all been agricultural people, and we do not know from which European country they formerly came. In fact, they have been in America for many, many generations.

## Where We Are . . .

We are located in Arkansas—in the northwest corner county (Benton), only twelve miles south of the Missouri line and twenty-six miles east of the Oklahoma line, eighty-one miles almost due north of Fort Smith, Arkansas, and eighty-three miles, almost due south, of Joplin, Missouri; one hundred twenty-nine miles east of Tulsa, Oklahoma, and one hundred six miles southwest of Springfield, Missouri. On Federal highways 71 and 62, just south of Rogers, Arkansas.

ON THE TIP TOP OF THE OZARK MOUNTAINS where our growing season is almost thirty days shorter than at Fort Smith, Arkansas. Our summers are short and nights are cool, and our growing season more like that of North Missouri, Iowa and Nebraska than Eastern and Southern Arkansas.

Hence, our stock is well adapted to the extreme Northern, Eastern and Western States, as well as being the best for Southern States.

### OUR ONE OBJECTIVE

Is to furnish you with the very best that is to be had in all kinds of nursery stock, ornamentals, seeds and plants.

## CUSTOMERS QUESTION BOX

In this column, we try to give you the answers to representative questions from our daily mail, in hopes that they will be of interest to you.

### Q. Can I plant strawberries this fall?

A. Most experts recommend spring planting. Even if planted in fall you couldn't expect much crop the first year, and freezing and thawing might heave out of ground and kill them.

### Q. What perennials can be planted in the fall for blooms the following year?

A. Almost any kind of strong plants.

### Q. Why don't my peonies bloom?

A. Very deep planting is often the trouble. Move to a new location. Plant with eye two inches below soil level. They need plenty of sun, rich soil, and plenty of water.

### Q. When is the best time to plant tulips?

A. Plant tulips in October or November. Plant to a depth of 4 inches. A mulch over the bulbs will help.

### Q. What dust is best for roses?

A. Dust with Bug Dust once every two weeks. It will help control diseases and insects.

### Q. Can I plant raspberries and blackberries in the fall?

A. Either time is equally good, but nurserymen offer them in the fall as they usually don't get time to dig them in time for shipping.

### Q. Can all fruit trees be planted in fall?

A. Most all fruit trees, except peaches, apricots and nectarines.

### Q. How should I prune my raspberries and dewberries?

A. Raspberries, blackberries, dewberries and boysenberries should have the old stock cut off in the fall after they quit bearing. The new stock that comes out is what makes the berries. This should be done each fall to have berries the following season.

## WE OWN AND OPERATE OVER 300 ACRES

### Thirteen Reasons Why You Should Buy From Us . . .

- 1—Because we sell you the best trees, plants and vines that can be produced at prices far below what others will ask you for the cheap, worthless kind. Our nursery stock is grown by the best method known to nurseries and no better can be produced regardless of prices. We offer \$100.00 reward for improved method on how to grow better nursery stock.
- 2—Because we prepay the postage or express charges on all orders, except Balled or Burlapped Evergreens.
- 3—Because we sell direct to the fruit growers, saving you the agent's or middleman's commission.
- 4—Because we guarantee satisfaction or your money refunded, and we pay postage or express both ways.
- 5—Because we do not belong to any trust or combine, and are free to make our prices just as low as we believe we can afford.
- 6—Because all our trees and plants are guaranteed to be free from disease and insects, and have all been inspected by our State Inspector and each shipment bears a certificate of inspection.
- 7—Because we used every caution to keep all our varieties true to name and should a mistake occur and any variety prove untrue to name we will replace it free of charge or refund the price paid for it.
- 8—Because we grow and offer for sale only varieties that are known to be good fruits and money makers.
- 9—Because Benton County, Arkansas, has many, many acres of varieties of fruits, and we have under our close observation a greater variety of fruits and berries than our competitors.
- 10—Because Ozark Mountain, Arkansas Grown Nursery Stock is now considered by Horticulturists to be the best that can be produced.
- 11—Because trees and plants must be well rooted if success is to be made with them. Ours are the best to be had.
- 12—Because our old customers send us repeated orders, and their neighbors send us their orders, a proof that they are well pleased.
- 13—Because we use extreme economy in both growing and selling our nursery stock, thereby saving money for you.



## Spraying Guide for Fruit

CROPS	INSECTS AND DISEASES	MATERIALS	DILUTIONS		TIME TO SPRAY
			One Gal. of Water	50 Gals. of Water	
PEACH PLUM	Scale, Insects and Leaf Curl	Lime-Sulphur Sol. Oil Emulsion or Dry Lime-Sulphur	1/4 pint 18-20 teaspoonsful	5-7 gallons 2 gallons	Before the buds swell. Add Bordeaux to Oil Emulsion to prevent leaf curl.
	Shot Hole or Fungi Curcuh	Zinc Sulphate Arsenate of Lead	1 teaspoonful 2 teaspoonsful	12-15 pounds 2 pounds 3/4 to 1 pound	Combine with petal fall and later sprays. Use in combination with Dritomic Sulphur on petal fall, shuck and cover sprays.
APRICOT CHERRY	Scab and Brown Rot	Dry Mix, Dritomic Sulphur	12-20 teaspoonsful 8 teaspoonsful	8-10 pounds 2 1/2 pounds	1. When most of shucks are off. 2. 2 weeks after shucks have dropped. 3. 4 weeks before picking if necessary.
	Borers	Paradichlorbenzene Ethylene Dichloride Emulsion	1 oz. 2 in. from trunk of tree Sprinkled around trunk of tree		In the fall or spring. In the fall or spring.
APPLE PEAR	Scale Insects and Blister Mites	Lime-Sulphur Sol. Dry Lime-Sulphur	1 pint 18-20 teaspoonsful	5-7 gallons 12-15 pounds	Dormant and delayed dormant. When buds begin to swell.
	Psylla, Slugs, Scab and Codling Moth	Bordeaux Mixture or Dry Lime-Sulphur or Lime-Sulphur Sol. with Arsenate of Lead	12-16 teaspoonsful 5-6 teaspoonsful 1/5 pint 3-8 teaspoonful	6-8 pounds 3-4 pounds 1 1/4-1 1/2 gallons 1-1 1/2 pounds	1. Cluster or pink stage. 2. Calyx or petal fall. 3. Two weeks after petals fall.
	Later Codling Moth For blight at full blossom Blotch	Arsenate of Lead Bordeaux Dritomic Sulphur	3-8 teaspoonful 12-16 teaspoonsful 3 teaspoonsful	1-1 1/2 pounds 8 pounds 1 pound	8 to 10 weeks after petals fall and as often as necessary to keep fruit covered with Arsenate of Lead, and a fungicide.
	Aphids (Plant Lice)	Black Leaf 40	1 teaspoonful	1/2 pint	Combine with other spray and apply when Aphids appear.
GRAPE	Chewing Insects Black Rot-Mildew	Arsenate of Lead Bordeaux Mixture	2 teaspoonsful 12-16 teaspoonsful	1-1 1/2 pounds 6-8 pounds	1. After the blossoms fall. 2. Ten days to two weeks later.
	Leaf Hopper	Black Leaf 40	1 teaspoonful	1/2 pint	Apply when first nymphs of the Hopper acquire wings.
BLACKBERRY DEWBERRY RASPBERRY	Rose - Scale, Cane-Blight, Leaf-Spot and Anthracnose	Dry Lime-Sulphur	9 level tablespoonsful	12 pounds	In spring before growth starts.
	Anthracnose	Dry Lime-Sulphur	2 1/2 level tablespoonsful	3 pounds	Just before the bloom.
STRAWBERRY	Leaf-Spot, Flea Beetle and Leaf-Roller	Pestroy	7 level tablespoonsful	7 pounds	1. Before the blossoms open. 2. As soon as the fruit has been picked.

### Kills Shot Hole Borers with Homemade Mixture

"Here is my method of controlling shot hole and other borers in my orchard," says John Whiteside of Illinois. "I take a half-gallon of liquid lime-sulphur, a quart of hydrated lime, four ounces of crude carbolic acid, and a pint of flour, first mixing the lime-sulphur and carbolic acid together and then the flour and hydrated lime, after which they are all mixed, stirring well all the time. I paint this material on trees of any age, from the bottom of the trunk up about 18 inches. The first application is made in late April and intermittently thereafter, until the middle of June. I put the mixture on the trees as needed, which can be determined by inspection of the trees."

**HOW TO KILL PEACH BORERS:** Use pure Paradichlorobenzene on trees when temperature averages 60 degrees F. Remove with hoe all weeds, sticks, etc., from trunk of tree for a space of 6 to 12 inches. Remove any thick masses of gum on the trunk of tree. Place from 3/4 to 1 1/2 ounces of Paradichlorobenzene in a narrow band 2 inches from trunk of tree. Do not place the crystals against the trunk for serious injury might result. Then place 4 to 6 shovels full of dirt over crystals, mounding up toward the trunk. Leave 3 or 4 weeks, then tear down mounds. Should be applied in the fall.

**PEACH CURL:** A fungus that attacks the twigs, leaves and blossoms of the current season's growth and causes the leaves to puff and fold and makes the edges curl inward. Sprays should be applied some time during the dormant season before growth starts. For each 100 gallons of spray, use 12 1/2 gallons of commercial liquid lime-sulphur. If an oil Bordeaux is desired, for each 100 gallons oil spray use from 3 to 4 gallons of boiled or cold mix lubricating oil emulsion plus Bordeaux 6-6-100. These sprays will control both peach leaf curl and San Jose scale. Where scale is not present, Bordeaux 6-6-100 or lime-sulphur solution at the rate of 7 gallons in 100 gallons of spray will control peach leaf curl.

**HOW TO KEEP RABBITS FROM GNAWING FRUIT TREES:** Paint trees with the following mixture using 1/4 gallon of limesulphur, 3 pints of water, 1/4 pint of common flour, 1 lb. lime. Should be painted about 2 feet high for cotton tails and about 3 feet for jack rabbits. Apply in late fall or early winter and then again about February 1st.

**ROSE MILDEW:** A light sprinkling of sulphur flour will generally check this. If this isn't beneficial, dissolve 1 ounce of potassium sulphuret in 2 gallons of cold water and apply as a fine spray.

**BLACK SPOTS ON ROSES:** A disease of fungous nature that appears as a black spot on the leaf and later turns yellow and falls. It usually occurs in the latter part of the season. If it has appeared in the past on your plants a spraying in April, before the foliage appears, with Bordeaux Mixture will be necessary as a correction.

**BAG WORMS ON EVERGREENS.** May be controlled effectively by spraying with arsenate of lead, using 3 lbs. of powder in 100 gallons of water as soon as the larvae have all hatched, that is, some time early in June. In case only a few trees are affected, hand-picking the bags in the fall or early spring is an effective measure.

**RED SPIDERS ON EVERGREENS.** Wetting trees during the hot part of the day and then immediately dusting them with finely powdered sulphur, thoroughly coating the foliage when temperature is above 70 degrees, is most effective. Usually requires more than one application.

**SCHEDULE ON APPLYING SPRAYS:** Write to your State Experiment Station for information on when and how to spray your fruit trees. Or ask your local spray dealer and he will be glad to give you this information.

**SEEDLINGS:** Do not allow your trees to sprout out below the top bud or graft as the trees will be seedlings when allowed to sprout. Break off all sprouts that come out below the top graft or buds so that the trees will be true to name.

Plant Nut Trees for Shade

# NUTS

Pay Big Profits . . .



## PAPER SHELL PECANS

**STUART**—Very large, oblong, marked with dark color, shell medium thickness, flavor rich and sweet; nuts averaging 40 to 60 per pound. One of the earliest and heaviest bearers. No one will make a mistake in planting largely of this variety as it succeeds on the different soils, especially on the clay soils of the northern portion of the cotton belt.

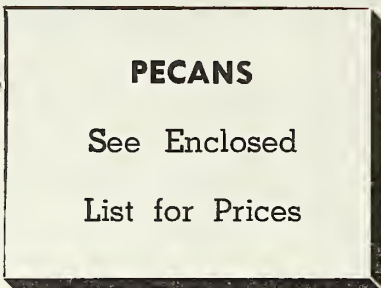
**SUCCESS**—Size large, oblong, tapering to the apex. Color reddish brown, purplish markings, shell thin, cracking quality good; partitions thin; kernel large, full, plump, yellow; flavor sweet, quality very good. The tree is a good grower. A fine variety. Success usually is one of the latest to start growth in spring.



## BUTTER NUT (OR WHITE WALNUT)

The nuts are large, long, oily and nutritious. Trees are lofty and spreading with a tropical appearance.

2-4 ft., \$1.00 each;  
\$10.00 per doz.



## PECANS

See Enclosed  
List for Prices



## FILBERTS (or Hazelnuts)

Good quality and bear almost every year and very young.

2 to 4 feet, 75c each;  
\$7.50 per doz.

## ALMONDS

Soft shell, rich and deliciously flavored, rapid growing trees and bear very young.

2 to 4 feet, \$1.75 each;  
\$17.00 per doz.

We accept orders subject to stock being unsold when your order comes up for shipment and we are not liable for more than you have paid, which will be promptly refunded in case we cannot fill your order.

## SIBERIAN WALNUT

Fast growing tree; a beauty for ornamental tree, perfectly hardy and valuable for its delicious nuts.

2 to 4 ft., 90c ea.; \$9.00 doz.

## BLACK WALNUTS

Selected from good strain of large nuts, and fine kernels. Trees are fast growing and good for shade trees as well as the nuts.

2 to 4 ft., 75c ea.; \$7.50 doz.

# NOVELTY FRUITS

## PAW PAW

OR

## "ARKANSAS BANANA"

A small tree with purplish or whitish flowers and handsome foliage. The large fruit is edible and improves by cultivation. Hardy as far north as the middle of Nebraska. Worthy of more extensive planting. Very desirable as an ornamental tree.

2-4 ft. trees: 75c each;  
\$7.50 per dozen

## HYBRID PERSIMMONS

Some of these should be planted by every family. The fruit often measures ten inches in circumference. They ripen in August, September and October. The trees bear young, and are very ornamental.

**EUREKA**—Very large, oblong, pointed, flesh yellow, skin red.

**HYAKUME**—Large round; skin orange red; flesh brown or dark; very sweet.

See Separate Price List.

## ARKANSAS NATIVE PERSIMMONS

A very large seeding variety.

Price: 50c each; \$5.00 dozen

## IMPROVED DWARF JUNE BERRY

A good substitute for the large or Swamp Huckleberry. The fruit is borne in clusters, and is reddish-purple in color and changing to a bluish black. In flavor it is a mild, rich sub-acid, excellent as a dessert fruit or canned.

Price: 20c each; \$2.00 dozen

## BAMBOO GRASS: Arundinaria, japonica:

The hardiest of the group and safely planted throughout the United States, stems 10 to 12 feet in height, leaves flat, short-stalked, from persistent sheaths. Flowers grass-like, in flattish spikes which are gathered in large, often plummy clusters. Fine for summer and fall screens.

15c each; \$1.50 dozen

**SASSAFRAS (Verolium)**—Usually a small, slender tree, but specimens up to 100 feet high. Flowers yellow, usually in racemes that bloom before the leaves unfold, delightfully fragrant. Fruit blue-black with a bloom, on fleshy, bright red stalks. Almost no native trees have such gorgeous scarlet foliage in the fall. The roots make a fine healthy tea in the spring of the year.

3 to 5 ft., 60c each

## HARDY CHINESE DATE

The Chinese Date (Jujube or Zizyphus) is a fruit from the high interior of China. The tree is a heavy and constant bearer and commences to bear at an early age, four-year-old trees having produced 150 pounds of fruit. It blooms very late in the spring, avoiding all danger from spring frosts. The fruit is one to two inches long, and chocolate colored. It is delicious when eaten fresh or cured like dates, and is excellent for preserves and jam. Cooked in a sugar syrup and allowed to dry, it becomes a most tasty and palatable confection which we believe will eventually rival the date as a commercial product. Because of its productiveness and its highly nutritious and delicious fruit, capable of being used in many ways, it is sure to be a valuable addition to the orchards and gardens. Every home should have one or more trees. It likes a clean back yard where it is not cultivated, but will grow anywhere.

\$1.50 each; \$15.00 per doz.



It will pay you to plant these

# GARDEN FAVORITES



## ASPARAGUS

Is of the easiest culture and is one of the first good things you may have from your garden. The plants, when once established, last for years and grow better with age. Care should be taken not to pick asparagus the first season planted. The ground should be well drained and well enriched with barnyard manure; give liberal dressing of manure each year.

65c per dozen; \$6.00 per 100

## HORSERADISH

It is easy to grow as a weed, and every good housewife knows its great value in the making of sauce and seasoning. Once used in pickle, it will never be done without. Horseradish sauce is one of the chief appetizers of the golden old-time southern cuisine. It is also one of the new sauces or condiments that is pronounced by the best authority to be perfectly wholesome. A dozen plants will supply a large family for a lifetime, and it grows and multiplies very fast.

15c each; \$1.50 per dozen

## SAGE

**HOLT'S MAMMOTH**—Plant very robust, perfectly hardy, ornamental. Large leaves, finest flavor; used for seasoning sausage, meat dressing, etc. Also for medical purposes. Should be in every garden.

20c each; per 12, \$2.00

## RHUBARB (Pie Plant)

**Culture**—Good plants are easily grown in any good soil. Plant four feet apart each way, in deep, warm and very rich soil. The more manure the better the stalk. For winter forcing, take up two-year roots in fall, leave out to freeze, then bed close together on cellar bottom or under greenhouse bench in the dark.

**GIANT VICTORIA**—This is one of the greatest and most valuable vegetables we have ever offered. It is the earliest, tenderest, sweetest and best of all rhubarbs; fit for use in early spring, summer and all fall, while the common or sour sorts are fit for use only a few weeks in the spring. As fast as stalks are pulled new ones take their places. Scarcely has the frost disappeared until your table is supplied with this delicious, refreshing and healthful article of food which is so much desired and appreciated. The stalks are twice the size of the ordinary kind, and of a bright, crimson color, very tender, crisp, and of mild, delightful flavor; the skin is so tender it does not have to be removed when cooking and the sauce has a deep crimson color. Stalks will average 10 to 24 inches long; broad, thick and solid; stalks will weigh on an average one-half pound each and often weigh a full pound. Enormously productive, brings high prices and is a great money maker and in great demand. Try a dozen or two, our word for it, you will never have cause to regret your purchase, and you will never be without some of this variety.

Strong Roots, Each 15c; 12 for \$1.50; \$10.00 per 100.

# From the OZARKS

### OZARK BERRY SPECIAL No. 1

8 Ozark Huckleberries  
4 Black Raspberries  
for \$1.25

This assortment will fruit for weeks. Some are the Sweetest Berry Grown. And the raspberries are claimed to be the best flavored berries grown. All are fine to use on the table, to make Jelly, Jams, and Pies.

### OZARK HUCKLEBERRY

This delicious little berry is a native of the Ozark Mountain range, remarkable for its fine flavor, is a choice fruit for jams, pies and fruit cake. Grows luxuriant, very hardy; a prolific bearer, and when given a small amount of attention produces regular annual crops. Will grow on almost any kind of soil, and when once set is there permanently, never having to be renewed.

15c each; \$1.50 dozen

**MINT (Piperta)**—Peppermint, also known as brandy mint. A perennial herb 1 to 3 feet high, characterized by its strong, pungent oil, reproducing by under-ground stems. Has purple flowers in terminal spikes, nearly 3 inches long. It grows well in wet soil.

10c each; \$1.00 a dozen

### OZARK BERRY SPECIAL No. 2

12 Ozark Black Raspberry Plants  
24 Huckleberries  
25 Blakemore Strawberries

for \$2.75

### The New BRAINARD BERRY

A new tremendously heavy yielding berry for the Central, Southern and Pacific Coast States. A trailing type, much hardier and better in all other respects than the Himalaya. It is very productive and has large clusters of high quality berries which contain relatively smaller seeds than any other berry of this type. The Department of Agriculture has recommended it as a very worth-while variety and worthy of introduction.

15c each; \$1.50 dozen

ENCLOSED PRICE LIST  
CANCELS ALL PREVIOUS  
QUOTATIONS

Please do not send postage stamps in payment of your order as we use a postage meter for our mailings.



Crape Myrtle



Butterfly Bush (Buddleia)



Deutzia, Pride of Rochester

# Plant Beautiful Flowering **SHRUBS**

**ALTHEA (Rose of Sharon)**—Double rose, double white, double purple, double red. 2 to 3 feet, 35c each; 3 to 4 feet, 50c each.

**BARBERRY THUNBERGI**—18 to 24 inches, 30c each; \$2.50 for 10.

**BARBERRY, RED LEAF**—12 to 18 inches, 50c each; 18 to 24 inches, 75c.

**BEAUTY FRUIT**—Profuse bloomer, berries till frost, 50c each.

**BUTTERFLY BUSH**—Flowers resemble lilac in color and shape—appear in great profusion from mid-summer until frost. Of a delightful fragrance that is attractive to butterflies. Will invariably bloom the first year. 50c each.

**CALYCANTHUS (Carolina All Spice)**—A unique shrub growing upright to 6 feet, clothing its straight, strong, reddish brown shoots with large glossy leaves, from the axils of which spring odd double, spicily fragrant flowers of chocolate red. 18 to 24 inches, 40c each.

**CARAGANA (Siberian Pea Tree)**—A large shrub with beautiful leaves of bright green color; flowers yellow in small clusters in late spring, splendid for massing; does well on most all soils and in partly shaded places. 2 to 3 feet, 75c each.

**GRAPE MYRTLE (Lagerstroemia)**—The most gorgeous of all blooming shrubs for the Southwest. Blooms throughout the entire summer; withstands drouths wonderfully. Crape Myrtle is very effective for hedges, and is at its best when pruned every winter and not allowed to grow in tree form. We can furnish pink, red and white. 2 to 3 feet, 50c each; 3 to 4 feet, 75c each.

**CYDONIA, JAPONICA (Flowering Quince)**—A popular dooryard shrub, growing from 3 to 6 feet high. The scarlet flowers appear before the leaves, giving a brilliant glow to the bush even from a distance; excellent in shrub groups or as a hedge. 2 to 3 feet, 50c each.

## DEUTZIAS

2 to 3 ft., 40c each

3 to 4 ft., 65c each

**PRIDE OF ROCHESTER**—Upright, fast grower, 6 to 8 feet. Flowers in large panicles are pinkish white in late May.

**DOGWOOD, Siberian (Cornus Alba Siberica)**—Valued especially for coral red stems. Some of the older stems should be cut out each spring to encourage new growth that shows color best. It has white flowers in May and white berries in winter. It is fast growing, 6 to 8 feet, and is used for screen effects. Endures partial shade. Other varieties have gray, green and yellow bark or twigs. 2 to 3 feet, 40c.

**DOGWOOD (Red Osier)**—A spreading shrub; branches in winter are a dull purplish red color; leaves dark green above, whitened beneath; flowers creamy white in dense flat topped clusters, followed by white berries. 2 to 3 feet, 50c.

**ELDER (Sambucus)**—Although the Elders are attractive in flowers and fruit, they are chiefly grown for their beautiful leaves. They grow well in all soils, and must have vigorous pruning to keep them in shape. 2 to 3 feet, 50c each.

**ACUTILOBA (Cut-Leaved Elder)**—Great, handsome cymes of delicate white, fragrant flowers in June and July, followed by large clusters of fruit. 2 to 3 feet, 50c; 3 to 4 feet, 75c.

**AUREA (Golden Elder)**—Contrasted with other shrubs, the golden yellow leaves of this European Elder give heightened effects in tone and color. Flowers white, in flat topped cymes. Grows naturally 10 to 15 feet, but can be pruned into a neat, compact little bush. 2 to 3 ft., 75c each.

**FORSYTHIA (Golden Bell)**—These splendid old shrubs growing 8 to 10 feet tall eventually light up the garden with glinting masses of yellow very early in spring before leaves appear. The upright forms make excellent tall hedges, and are bright hued fillers for massed shrub groups. 2 to 3 feet, 75c each.

## HONEYSUCKLES

2 to 3 ft., 50c each

3 to 4 ft., 75c each

**WINTER HONEYSUCKLE**—The white flowers of this variety often open before the snow has gone in spring, and are deliciously fragrant. The foliage is of a very attractive shade, and remains green until hard freezing weather.

**MORROWI HONEYSUCKLE**—This is one of the most vigorous of the white flowered kinds, becoming from 6 to 8 feet tall. The foliage is of dark restful green and held until late in the season. In early spring the bush is like a ball of snow, because of the profusion of blooms. During midsummer the bright red berries contrast strikingly with the foliage and give the bush great attractiveness.

**TARTARIAN HONEYSUCKLE**—The most extensively used of the older varieties of Bush Honeysuckles. There are a number of varieties, some having flowers of distinctly reddish hue, some pink and some white. All bloom very freely and in midsummer carry loads of brilliantly colored berries, usually of bright red. We can supply Tartarian Honeysuckles in pink, red or white flowers.

## HYDRANGEA

2 to 3 ft., 75c each

**ARBORESCENS GRANDIFLORA (Hills of Snow)**—The flowers are, in large way, similar to the familiar "Snowball" in appearance; conspicuously white and imposing. July to September. By cutting back to the crown each spring, the bushes may be kept round and dense at a normal height of three to five feet. They are excellent for solid low borders or in foundation plantings which will allow for about four feet.

**PANICULATA GRANDIFLORA**—Fine, tall hedges, or if planted in rich soil and severely pruned every spring before the leaf buds open, will get to be very dense, dwarf clumps of compact form, wonderfully attractive when laden with their massive white plumes. Large beds kept at a uniform development, are extremely showy, first snowy white, then pink, then reddish-bronze and green. August till autumn. Planted rather well back in the intervals between other shrubs, the projecting flower wands arching from the ground are extremely effective.



Hydrangea Paniculata



Philadelphus Mock Orange



Lilac Bush

# SHRUBS Make Your Home Worth More

## FRENCH HYDRANGEAS

2-Year Plants, \$1.50 each

**FRENCH HYDRANGEAS**—In gorgeous colors. These most beautiful hydrangeas that grow can be grown outdoors in this section where it gets 20 degrees below zero by mulching them in the late fall for the winter with old straw, leaves or manure. Lay the tops down and cover with this mulching so they will be well protected from the hard freezes. In the spring remove some of this mulching and straighten the tops up and they will bloom nicely for you.

**BOUQUET ROSE (Rose and Pink)**—Large trusses of well formed flowers, rosy amber, turning to bright pink.

**MAURICE HAMAR (The famous Blue Hydrangea)**—A beautiful plumbago blue, large flowers and profuse bloomers.

**HYPERICUM (St. John's Wart)**—An attractive, useful class of hardy shrub now becoming popularized for dwarf and medium location in shrub groups and foundation planting. Their dense, rounded construction of fine twigs and small, usually shiny leaves are well adapted to this purpose; the abundance of fully distributed bloom providing an otherwise difficult display of yellow. 2-3 ft., 40c each.

**KERRIA JAPONICA FL. PL.**—A very bright and cheerful dwarf to medium shrub, particularly adapted to sunny foundation plantings; its very numerous branches are graceful, slender, shiny, arching; its leaves serrated; stems and foliage alike a brilliant green. Its abundant double flowers are like half-open rose buds, rich yellow. 1½ to 2 ft., 75c each.

## KOLKWTZIA

**BEAUTY BUSH (K. amabilis)**—A recently introduced shrub which bids fair to become one of the very best. Growth upright in the center, with outer branches arching. Bell-shaped flowers, borne in pairs forming a cluster of 25 or so, pink with orange veins. Buds darker pink. Somewhat resembles the Weigela. 2 to 3 ft., 75c each.

## LILACS (Syringa)

**PURPLE (Common)**—It is the well known purple fragrant variety. 2 to 3 ft., 50c each.

**WHITE (COMMON)**—Is also fragrant but flowers are white. 2 to 3 ft., 50c each.

**PERSIAN LILAC**—A graceful shrub with finely cut foliage and delicate lavender blossoms; blooms not so large as the common purple, but it is a graceful shrub. 2 to 3 ft., 60c each.

**MOCK ORANGE (Philadelphus avalanche)**—Grows to only about one-half the height of the old fashioned "Sweet Syringa." Its slender arching branches make it probably the most graceful of the species. Flowers frequently cover the entire length of the branches and are very sweet scented. Blooms in late spring. 2 to 3 ft., 50c each.

## RHUS (Sumac)

**RHUS CANADENSIS**—Aromatic shrub growing to 3 feet. Good cover plant for dry, rocky banks; conspicuous in early spring by its yellow flowers. Used extensively by the Federal Government in roadside beautification projects. Very hardy. 2 to 3 ft., 75c.

**RHUS TYPHINA (Stag Horn Sumac)**—Picturesque and rugged in all stages of development to its small tree maturity of about 30 feet. Its flowers are borne during June and July in dense terminal panicles, followed by impressive red fruits, 2 to 3 ft., 75c; 3 to 4 ft., \$1.00.

**SNOWBALL (Viburnum opulus sterile)**—An old time favorite. Rather tall growing; foliage large and coarse; showy flowers in large white "balls" in April. 1 to 2 ft., \$1.00 each; 2 to 3 ft., \$1.25 each.

**VIBURNUM OPULUS (Highbush Cranberry)**—Beautiful shrub of the viburnum family, foliage the same as the Old Fashioned Snowball, blooms in early spring, flowers flat white clusters followed by berries which turn red by fall. 2 to 3 ft., 65c; 3 to 4 ft., 75c postpaid.

## WEIGELAS

**ROSEA**—Most popular of all; tall growing, vigorous, with deep pink flowers in the greatest profusion during June, and more sparsely at intervals thereafter. 2 to 3 ft., 75c each.

## SPIREA

**ANTHONY WATERER**—Dwarf, bushy, of spreading type with large corymbs brilliantly colored rosy crimson. Very free flowering, at its best in late summer. This is one of the very good showy red flowered shrubs sufficiently dwarfed to be used in foundation plantings or the low front of shrub groups. 15 to 18 inches, 90c each.

**SPIREA, Billardi**—Tall, erect shrub with canes terminated by weathery plumes 5 to 6 inches long, of dainty pink color. 2 to 3 ft., 75c each.

**BUMALDA**—A spreading, low bush with dark leaves brightened by corymbs of pretty light pink flowers in May, and at intervals all summer. 15 to 18 inches. 75c each.

**DOUGLASI**—Upright in growth to 7 feet with reddish brown branches and narrow, oblong leaves. Bears spikes of beautiful deep rose colored flowers in July. 2 to 3 ft., 75c each.

**VAN HOUTTEI**—Grandest of Spireas. One of the best of shrubs; complete foundation of pure white bloom in May and June. The foliage and bush shape is ornamental the year round. 18 to 24 inches (2-year), 50c each; 2 to 3 ft., 75c.

**SNOWBERRY (S. Racemosus)**—Inconspicuous rose colored flowers in June and July; followed by large clusters, milk white fruits which remain far into winter. The combination of pink flowers and white berries on the same twig is charming. Foliage is rounded, clean and fresh looking, a glaucous green. 2 to 3 ft., 75c each; 3 to 4 ft., \$1.00 each.

**INDIAN CURRANT (S. Vulgaris)**—Similar to the Snowberry except that its fruits are dull red, and that the smaller berries cluster in thick ropes along the weighted down stems. The foliage is small, close set and dark, which, with a uniform spread of its branches compares favorably with the Privets in mass effects. Mail size, 40c each; 2 to 3 ft., 50c each.

**ODESSANA (Caspian Tamarix)**—4 to 6 feet. Exquisitely feathered foliage of silvery green, blooming in July and August with large, loose panicles of lavender-pink flowers. Dwarf growing, more bushy and spreading than the others. 2 to 3 ft., \$1.00 each.

## CLIMBING VINES

**AMERICAN IVY**—Deeply cut leaves which turn to a beautiful crimson in fall. 2 year size, 75c each.

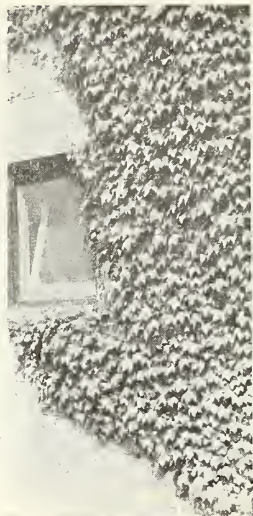
**BOSTON IVY**—A hardy climber that clings firmly to the smoothest structure. Color is deep green in summer changing to crimson in fall. 2 year size, 75c each.

**ENGLISH IVY (*Hedera helix*)**—Evergreen glossy foliage, a good clinging as well as a splendid ground cover. 2 year size, 85c each.

**BITTERSWEET (*Celastrus scandens*)**—Glossy foliage. Large clusters of beautiful orange fruits retained all winter. 2 year size, 85c each.

**WISTERIA (*Magnifica*)**—Dense cropping clusters of pea shaped purple flowers crowning the vine in May make the wisteria universally admired. 2 year vine, \$1.00 each.

**TRUMPET FLOWER**—A robust woody vine with numerous roots along stems. Orange scarlet, trumpet shaped flower. Leaves are light green. 2 year size, 65c each.



Ivy

## WATER PLANTS

**ARROWHEAD**—Spikes of Butterfly-like blossoms and arrow shaped leaves. Thrives well in shallow water; very thrifty. Strong plants. 15c each.

**WATER HYACINTHS**—The plants float in water, but like the roots in a cool place, particularly among lily pads where they do not drift about. Delicate spikes of lavender flowers resembling the hyacinth. Vigorous well rooted plants. 15c each.

**WATER IRIS**—These plants are among the most beautiful of the garden flowers, extremely easy to grow, thriving in shallow water. Pale blue blossoms in abundance. 15c each.

**WATER POPPY**—Each plant throws out many floating runners bearing large blossoms all summer. Yellow flowers very similar to the California Poppy. 15c each.

## CLEMATIS

Grand for pillars and trellises, pegged down for bedding or for running over rock work, old trees and stumps. They delight in rich soil and sun.

### LARGE FLOWERING VARIETIES

**Henry**—Large creamy white flowers.

**Jackmani**—Immense velvety violet purple blooms.

**Mad. E. Andre**—A distinct crimson red flower.

**Ramona**—Dazzling deep sky blue flowers. Price: 2 year size, \$1.50 each.

### SMALL FLOWERING VARIETIES

**Clematis Paniculata**—Flowers are medium size, fragrant, pure white, borne in immense sheets in September. 2 year size. \$1.00 each.

## HONEYSUCKLE

**HALL'S JAPAN HONEYSUCKLE**—A strong grower and constant bloomer. Excellent for covering banks and trellises. Strong plants: 25c each; \$2.50 per doz.

**FLAME HONEYSUCKLE**—Large Coral-colored on the outside opening to yellow inside. Price: 2 year vines, \$1.00 each.

March 5, 1946

Benton County Nursery Co.

Just to say—Last year in Jan. I ordered 12 rose plants from you and received same IN JAN. I have never seen more beautiful roses in my life than they were all spring, summer and until late fall. They have stood the winter grand and are now almost completely leaved out again. Thanks and good wishes.

Mrs. S. I. Smith,  
Wadley, Ala.

## WATER LILIES

**ROSE AREY**—Starry cerise pink, intensely fragrant of exceptional size, profuse bloomer. One of the most popular lilies. \$2.00 each.

**CHROMATELLA**—Bright, sulphur yellow with broad curving petals. Blooms in great profusion through the entire season. The leaves are handsomely splotted with maroon. Extremely hardy, very vigorous and the most satisfactory of the yellow lilies. \$1.50 each.

**PAUL HARIOT**—On the opening day, the petals are clear yellow suffused with rose, becoming orange pink on the second day and deepening to red on the successive days. We consider it one of the best all around varieties, blooming profusely and being a sturdy, hardy plant. \$2.00 each.

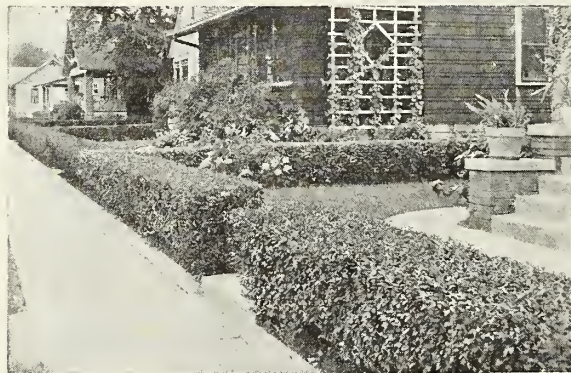
**GLADSTONE**—Large, dazzling, white flowers with broad, waxy petals and sulphur yellow heart. Its pure, snowy white makes it a perfect contrast with colored varieties, very prolific. \$2.00 each.

# Surround Your Home with these Beautiful HEDGES

## CHOICE HEDGE PLANTS

	Each	10 Rate	100 Rate
1 to 2 Feet.....	12c.....	\$1.10.....	\$10.00
2 to 3 Feet.....	15c.....	1.40.....	13.00
3 to 4 Feet.....	20c.....	1.70.....	15.00

**Amur Privet (North)**. Hardy North type. Leaves dark green.  
**Amur Privet (South)**. Fine leaf type. Evergreen in the South.  
**Calif. Privet**. Of upright, rapid growth. Foliage light green.



Privet Hedge



## HYBRID TEA ROSES

# ROSES

## Climbing EVERBLOOMING ROSES

- AMI QUINARD—Dark red.  
 BETTY UPRICHARD—Copper and red.  
 COLUMBIA—Peach-pink.  
 CALEDONIA—Large white.  
 ETOILE DE HOLLANDE—Lovely dark red.  
 E. G. HILL—Deep red, velvety inside.  
 EDITOR McFARLAND—Lovely deep pink.  
 FRANCIS SCOTT KEY—Double rich pink.  
 GOLDEN DAWN—Yellow.  
 GOLDEN OPHELIA—Yellow and gold.  
 K. A. VICTORIA—Double, snowy white.  
 LADY HILLINGDON—Popular, apricot-yellow.  
 LUXENBOURG—Bright yellow, shaded yellow.  
 PRESIDENT HERBERT HOOVER—Multi-colored rose. Pink and salmon.  
 RADIANCE, PINK—Popular and best pink.  
 RADIANCE, RED—Popular and best red.  
 ROUGE MALLERIN—Large, pointed scarlet buds, red blooms.  
 ROSLYN—Fragrant, golden yellow.  
 TALISMAN—Double, gold, apricot, yellow, deep pink and old rose.

**TWO  
YEAR  
BLOOMING  
SIZE  
FIELD  
GROWN**

**95c each  
\$9.50 Doz.  
Postpaid**

## POLYANTHIA ROSES

- GOLDEN SALMON—Salmon pink and orange.  
 IDEAL—Dark red.

- PINK RADIANCE (Climbing)—Pink.  
 RED RADIANCE (Climbing)—Red.  
 PAUL'S SCARLET (Climbing)—Old favorite, dark red



Climbing Rose

## Hardy, Beautiful PERENNIALS

Your garden is not complete without perennial borders and perennial beds.

**ACHILLEA "The Pearl"**—Pure White flowers borne on strong erect stems. 20c each; \$2.00 doz.

**ALYSSUM**—Big clusters of bright yellow flowers in early spring. 25c each; \$2.50 doz.

**ARTEMESIA "Silver King"**—Silver colored stems and foliage. 25c each; \$2.50 doz.

**BLEEDING HEARTS (Old fashioned variety)**—Blooms from April to June. Dainty heart-shaped rose-pink blooms. 3-5 eye roots. 75c each; \$7.50 doz.

**Fern-Leaf Everblooming variety**—Popular ever-blooming Bleeding Heart with finely cut fern-like foliage. Blooms from April till frost. Thrives in full sun or partial shade. 50c each; \$5.00 doz.

**CANTERBURY BELLS (Campanula)**—Grows 2 feet high. Plants are almost pyramidal in growth and are covered with bell-like blooms in June. Very showy. Mixed colors. 30c each; \$3.00 doz.

**COLUMBINE (Aquilegia)**—Grows 2 to 3 feet high. One of the first perennials to bloom in the spring. Mixed colors. 35c each; \$3.50 doz.

**COREOPSIS**—Golden yellow flowers, similar to daisies. Blooms profusely all summer. Grows 18 to 24 inches high. 25c each; \$2.50 doz.

**DELPHINIUM (Hardy Larkspur)**—Tall, graceful plants bearing long spikes of blue and white flowers during the summer months. Mixed colors. 45c each; \$4.50 doz.

**DIANTHUS (Hardy Scotch Pinks)**—Carnation like flowers on stems 10 to 12 inches high, very fragrant. Colors, pink, white, red. 25c each; \$2.50 doz.

**GALLARDIA (Blanket Flower)**—Shining deep wine red flowers, tinged with dark yellow, brownish red center. Resembles daisies, grows on long stems 10 to 12 inches high. 25c each; \$2.50 doz.

**GYPSOPHILA (Baby's Breath)**—Tiny white double flowers blooming in profusion on threadlike stems during early summer. 50c each; \$5.00 doz.

**HOLLYHOCKS**—Familiar old time favorite flowers on stalks 5 ft. high. Gay assortment of colors. 25c each; \$2.50 doz.

**HYBISCUS (Mallow)**—Large Hollyhock-like flowers on branches 4 to 5 ft. high in red, pink and white. 50c each; \$5.00 doz.

**HARDY PHLOX**—Beautiful flowers borne in large clusters on tall stems.

**Named Varieties:**

**Africa**—Carmine red.

**B. Comte**—Tall growing with rich, satiny amaranth flowers.

**Daily Dawn**—Light salmon pink.

**Ethel Pritchard**—Pale blue.

**George Stipp**—Deep glowing salmon.

**R. P. Struthers**—Bright rosy red.

All are strong field grown plants.

50c each; \$5.00 doz.

**MIXED VARIETIES (Unnamed).**

35c each; \$3.50 doz.

**PLATYCODON (Balloon Flower)**—Large showy blue flowers. Resemble a balloon in bud and opens to a star shaped flower. 25c each; \$2.50 doz.

**PAINTED DAISY (Pyrethrum)**—Grows 18 inches high. Lovely flowers of red, pink and white. Assorted colors. 35c each; \$3.50 doz.

**SHASTA DAISY**—Handsome plant with large, glistening white flowers in June and July. 30c each; \$3.00 doz.

**SWEET PEAS**—Desirable perennial of the sweet pea family. Blooms from May till frost. Colors: pink and white. 25c each; \$2.50 doz.

**SWEET WILLIAMS**—Old garden favorite. Flowers in clusters, clove scented on stems 8 to 12 inches high. 25c each; \$2.50 doz.

**VERBENA**—Hardy perennial, grows like the annual, lavender color blooms. 25c each; \$2.50 doz.

**VIOLETS (Russian)**—Hardy type, deep purple blooms. 25c each; \$2.50 doz.

**YUCCA (Mountain Lily or Adam's Needle)**—Grows 5 to 8 ft. high. Bears large bell shaped creamy white flowers in June. 25c each; \$2.50 doz.

## Hardy Chrysanthemums

**CUSHION TYPE MUMS**—Low growing variety, making small clumps of growth covered in early fall with flowers. Grows 8 to 10 inches high. Color pink. Each, 50c; Dozen, \$5.00.

**Large growing varieties:** Each, 45c; Doz. \$4.00.  
**Yellow**—Golden Herald, Mrs. E. H. Kidder, Blazing Gold, Golden Lode, Sec. Nehring.

**White**—Silver Sheen, Snow White, Christina, Marketeer.

**Pink and Lavender**—Major Bowes, Rose Chocard, Evening Star.

**Pompon and single varieties:** Each, 45c; Dozen, \$4.50.

**Yellow**—Redell, Yellow Button, Mary Hall.

**White**—Crystal White, Sea Gull, Irene.

**Pink**—Pink Dot, Nellie Kleris.

## BULBS FOR FALL PLANTING

DO NOT ORDER AFTER JANUARY 1ST

### TULIPS

**Named Varieties. Large Bulbs**

15c Each; \$1.50 Doz.

**BLEIU AIMABLE**—Violet blue.

**WILLIAM PITT**—Red.

**LA TULIPE NAIRE**—Brownish black.

**HELEN EAKIN**—White.

**CHINA DRESDEN**—Light rose.

**ROSE COPELAND**—Bright rose pink.

**SUNKIST**—Yellow.

**PRIDE OF HAARLEM**—Red.

**MASCOTTE**—Salmon orange.

**AFTERGLOW**—Apricot orange.

**BARTIGON**—Red.

**YELLOW GIANT**—Yellow.

**WILLIAM COPELAND**—Lavender.

### HYACINTHS

**Named Varieties. Large Bulbs**

20c Each; \$2.00 Doz.

**GERTRUDE**—Pink.

**L'INNOCENCE**—White.

**BISMARCK**—Blue.

**CITY OF HAARLEM**—Yellow and orange.

**KING OF THE VIOLETS**—Purple.

### GRAPE HYACINTHS

10c Each; \$1.00 Doz.

### CROCUS

**Named Varieties**

10c Each; \$1.00 Doz.

**KING OF THE BLUES.**

**KING OF THE WHITES.**

**GOLDEN YELLOW.**

**STRIPED BEAUTY.**

### LILIES

**DAY LILY**—Blooming size. 20c each; \$2.00 per dozen.

**REGAL LILY**—Blooming size. 65c each; \$6.50 per dozen.

**MADONNA LILY**—Blooming size. 75c each; \$7.50 per dozen.

**LILY OF THE VALLEY**—Blooming size. 6c each; 60c per dozen.

**IRIS**—This lot a mixture of real good kinds and of fine colors. 10c each; \$1.00 per dozen.

**NARCISSUS**—5c each; 50c per dozen; \$35.00 per 100.

**PEONIES**—Mixed varieties. All are good kinds. 35c each; \$3.50 per dozen.

**PEONIES**—Named varieties. 75c each; \$7.50 per dozen.

The varieties named below are very large, double and fragrant.

Beautiful shade of red.

Very large white.

Fine shade of pink, very large.

## BULBS FOR SPRING PLANTING

### GLADIOLUS

**Mixed Varieties**

10c each; \$1.00 per doz.

**Named Varieties**

15c each; \$1.50 per doz.

**ALBATROSS**—White.

**ANNA EBERIUS**—Fuchsia.

**BAGDAD**—Old Rose.

**BERTY SNOW**—Lavender Pink.

**CHARLES DICKSON**—Violet purple.

**DR. BENNETT**—Red.

**DR. MOODY**—Lavender pink.

**FLAMING SWORD**—Red.

**GIANT NYMPH**—Rose pink.

**MARMORA**—Lavender.

**1910 ROSE**—Deep rose.

**PELEGRINA**—Blue violet.

**PICARDY**—Shrimp Pink.

**VAGABOND PRINCE**—Garnet brown.

## GARDEN BLOOMING CANNAS

**Named Varieties. Select tubers.**

15c each; \$1.50 doz.

**CITY OF PORTLAND**—Pink, green foliage.

**EUREKA**—White, green foliage.

**HUNGARIA**—Pink, green foliage.

**KING HUMBERT**—Yellow, green foliage.

**RED KING HUMBERT**—Red, bronze foliage.

**PENNSYLVANIA**—Pink, bronze foliage.

**PRESIDENT**—Red, green foliage.

**WYOMING**—Yellow, bronze foliage.

## FRAGRANT TUBEROSES

**TUBEROSE**—The very fragrant flower. 7½c each; 75c per dozen.

### DAHLIAS

**DAHLIAS**—In this lot we can supply the color wanted, of white, yellow, pink and dark red, of real good kinds at 25c each; \$2.50 per dozen.

**Named Varieties**

Each, 50c; Dozen, \$5.00

**LARGE FLOWERING TYPE:**

**City of Trenton**—Orange and red.

**Francis Larooco**—Best yellow.

**Girl of Hillcrest**—Apricot orange.

**Golden Eclipse**—Golden yellow.

**Hattie Sheldon**—Rose purple.

**Irene**—Old rose.

**Jean Kerr**—Pure white.

**Jersey Beauty**—True pink.

**Le Toreador**—Brilliant red.

**Mrs. I. De Ver Warner**—Orchid pink.

**Nathan Hale**—Bronze gold.

**Red Jersey Beauty**—Claret red.

**Rufus**—Deep maroon.

**White Faun**—Pure white.

**White Swan**—Creamy white.

**Your Lucky Star (Cactus Type)**—Pink, white center.

**POMPON TYPE:**

Each, 50c; Dozen, \$5.00

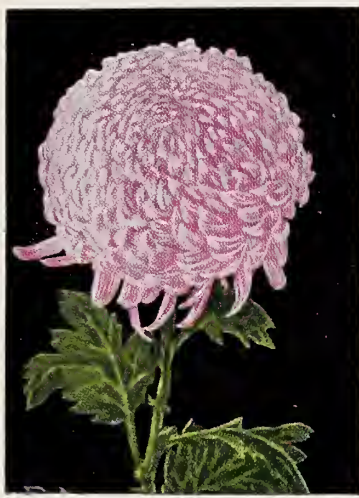
**Amber Queen**—Amber.

**Cardinal**—Fiery red.

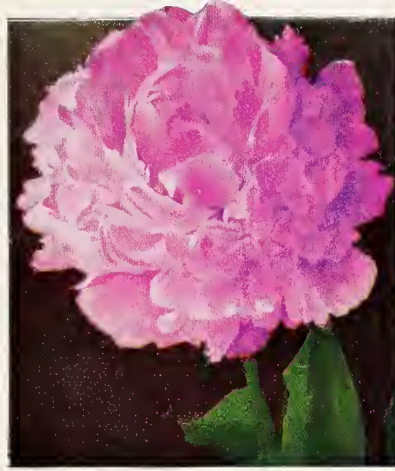
**Mary Munns**—Deep orchid.

**Morning Mist**—Pale lavender.

**Snow Clad**—Pure white



Chrysanthemums



Peony



Regal Lily



Jonquils, Narcissus and Hyacinths

**BULB COLLECTIONS**  
POSTPAID

- 10 Mixed Chrysanthemums...\$1.10
- 12 Jonquils ..... 1.10
- 12 Narcissus ..... 1.10
- 20 Grape Hyacinths (Blue)... 1.10
- 12 Hyacinths (Mixed Colors). 2.75
- 12 Iris (Mixed Colors)..... 1.10
- 4 Regal Lilies ..... 1.10
- 12 Tulips (Choice Mixture)... 1.65
- 20 Gladiolas (Mixed Colors).. 1.65
- 3 Peonies (Mixed Colors)... 1.65



Iris

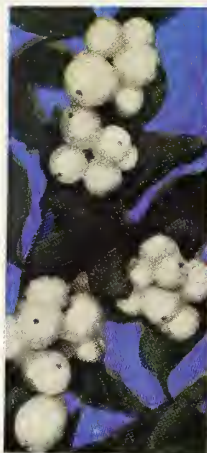


Tulips





Cydonia Quince



Snowberry



Flame Honeysuckle  
(*Lonicera Heckrottii*)



Spirea, Bumalda

## SPECIAL SHRUB COLLECTION

- 2 Flowering Quince
- 2 Spirea, Bumalda
- 2 Weigelia, Rasea
- 1 Butterfly Bush
- 2 Mack Orange
- 1 Spirea, Van Houttei
- 1 Snowberry

11 Beautiful Shrubs 2 yrs. 18 to 24"  
for \$3.85 Postpaid. 2 to 3 ft. size,  
\$5.50 Postpaid

### FLAME HONEYSUCKLE

Blooms all summer, foliage green  
all year. Makes a vine or shrub.  
1 yr. size \$1.10 Postpaid



Weigelia



Buddleia or Butterfly Bush



Syringa, Mock Orange



Spirea, Van Houttei



## General Information

### PRUNING AT TIME OF PLANTING

This is important. Fruit trees should be cut back to 15 to 24 inches above ground to give the roots less top to support and to make trees head out low near the ground, shading the bodies. In case of two- and three-year-old trees, if there are no good eyes or buds on main trunk, cut top off, leaving two or three branches, which should be cut back to three or four inches long. We will prune trees, ready for planting, if requested.

Shade trees should be cut back heavily. Ten-foot trees, to seven feet; twelve-foot trees to eight or nine feet, others, in proportion.

Flowering shrubs, cut back half. Privets and Ligustrums, one-third to one-half.

See under PECANS, ROSES and Berries for details.

Evergreens that are Balled and Burlapped need little, if any, pruning, unless extra large.

### LATER PRUNING

As fruit trees grow, cut off sprouts coming from below ground or below bud or graft. When of bearing age, limbs that rub against others, or are weak or too thick, should be removed. Water sprouts that come from lower part of trunk and main branches, under the shade of the tops, should be cut off. Excessive growth inside of tops, shaded and crowded, is worthless on a drain on trees.

Pruning of old trees should be done in January and February. When limbs are removed, they should be cut smooth against main branch, leaving no projection or spur.

When fruit trees are ten to fifteen years old and begin to decline, tops can be dehorned by cutting them back fully half way. Good crops will result after first year.

Large wounds made by pruning should be painted with ordinary house paint.

Flowering shrubs should be cut back half way every winter, except early spring bloomers, such as Spirea, Japan Quince, etc., which should be pruned after blooming time.

If old flowers of Crape Myrtle and other summer blooming plants are removed before seed is made, almost continual flowering will result. Otherwise, they will flower only once or twice.

Evergreens can and should be pruned any time of the year, if growing too large or becoming ragged. Some pruning is necessary for Broad-Leaf Evergreens to keep them compact and in bounds.

### CARE AFTER TRANSPLANTING

**PRUNING TREES AND SHRUBS.** After trimming back and pruning the limbs of ornamental trees, when planting, they need only enough trimming to shape them properly. Low side limbs should be removed to raise the head until after two seasons' growth, when they may be gradually removed until the head is at the desired height. Shrubs need heading-in of the limbs getting out of bounds and the cutting out of older wood occasionally to keep them in proper form. The general rule is to trim fall blooming shrubs, like hydrangeas, in the spring, and spring blooming shrubs, like spireas, in the early summer directly after they have bloomed.

**CULTIVATION.** Frequent shallow cultivation will produce a dust mulch and conserve much needed moisture in the soil. That is the most practical method of handling larger plantings. It should not be continued after the middle of August, otherwise the trees may not have time to mature and harden in preparation for winter.

**IN THE ORCHARD** it is best to cultivate all trees the same as you would corn, for several seasons, until they are large enough to shade the ground between them. During the summer it is a good practice to put in a leguminous cover crop. A cover crop will protect the soil and help prevent blowing and washing. It improves the chemical and physical condition of the soil by adding humus.

**MULCHING.** For only a few trees, shrubs, etc., a mulch of such materials as grass clippings, old strawy manure, marsh hay or dead leaves may be used instead of a dust mulch.

**WATERING.** Artificial watering, as an emergency measure in case of drouth is highly desirable. In any case water thoroughly. Do not sprinkle. Give the plant all the water it will take at one time. No more water need be applied for several days when this is done.

**FERTILIZING.** A good barnyard manure is the best fertilizer. When needed, a good application of manure applied around the orchard tree under the branch drip will be very beneficial.

Small fruits of all kinds should be well fertilized every year. Manure strawberry patch when plowing but not after plants are set.

**ASPARAGUS AND RHUBARB.** Plant rhubarb 3 feet apart in rich garden soil, with the buds 1 inch below level of the ground. Set asparagus in rich soil a foot apart in a furrow 6 inches deep. Cover 3 inches and tramp. In hoeing, work soil towards plant so that by midsummer the ground is level. Do not cover 6 inches deep at first or plants will be smothered. Cut sparingly the second year; after that cut all shoots 6 or 8 inches high until about the middle of June, then let tops grow.

Fertilize rhubarb liberally with stable manure every year; also asparagus when through cutting in June.

### Number of Trees Per Acre at Different Distances

Rule: Multiply the distance the plants are set apart, in the row, and the product will be the number of square feet for each plant, or hill, which, divided into the number of square feet in an acre (43,560), gives the number of trees or plant per acre.

Distance apart	No. of trees
10 feet by 10 feet.....	435
11 feet by 11 feet.....	360
12 feet by 12 feet.....	302
13 feet by 13 feet.....	257
14 feet by 14 feet.....	222
15 feet by 15 feet.....	193
16 feet by 16 feet.....	170
17 feet by 17 feet.....	150
18 feet by 18 feet.....	134
19 feet by 19 feet.....	120
20 feet by 20 feet.....	108
25 feet by 25 feet.....	69
30 feet by 30 feet.....	48
33 feet by 33 feet.....	40
40 feet by 40 feet.....	27

#### OUR GUARANTEE

is that you must be satisfied or your money will be refunded for any items you purchase from us that are not what we represent them to be. Upon receipt of any stock ordered from us, if you are not perfectly satisfied, return it to us by express or mail and we will refund you all money paid us for the items returned and for all transportation charges paid by you. You must follow our planting instructions on planting. We will either refund or replace claims. All claims except stock not true to name must be made by May 1st after planting.

#### Planting Distances for Trees and Plants

	Feet apart	
Apple .....	25	to 35
Pear .....	20	to 25
Cherry .....	18	to 25
Peach .....	18	to 25
Plums .....	15	to 20
Quince .....	10	to 12
Figs .....	12	to 15
Mulberry .....	25	to 30
Japan Persimmon.....	15	to 25
Pecans .....	40	to 60
Grapes .....	8	to 10

#### Planting Distances for Berries

	Feet apart in row	Rows Feet apart
Blackberry .....	3	7
Dewberry .....	2	6
Raspberry .....	3	7
Boysenberry .....	5	6
Youngberry .....	5	6
Strawberry .....	2	4



American Elm



American White Ash



Bechtel's Double Flowering Crab Apple

# ORNAMENTAL TREES

**AILANTHUS** (or Tree of Heaven)—The large pinnate leaves of this tree give it a tropical appearance, a very rapid grower, with-standing smoke and dust better than most any other kind of tree. 4 to 6 ft., \$1.00; 6 to 8 ft., \$1.50.

**ASH, White** (*Fraxinus Americana*)—One of the best native trees; leaves dark green and effective throughout our long summers. Native throughout America. 5 to 6 ft., 75c; 6 to 8 ft., \$1.00; 8 to 10 ft., \$1.25.

**BIRCH, Red** (*Betula Rubra*)—This tree is typical Birch. Its bark is a dark hue and its leaves are purple in color; its branches follow the general Birch habit of drooping gracefully. This tree likes wet soils and along streams. 4 to 6 ft., \$1.00.

**BLACK GUM**—A native that adapts itself to all kinds of soils and one of the most beautiful trees that grow in the Ozark Mountains. It is a close, compact growing tree, from 20 to 40 feet in height; the foliage is thick and dark green, making a very dense shade early in the fall. This foliage turns blood red, making it a thing of beauty for weeks before the leaves fall off. 4 to 6 ft., \$1.00.

**BOX ELDER** (*Ace Negundo*)—A large, rapid growing native tree of spreading habit, belonging to the Maple family. 4 to 6 ft., \$1.00; 6 to 8 ft., \$1.50.

**CATALPA SPECIOSA**—Broad, deep green foliage, with large, fragrant trumpet flowers in clusters in the spring. The Catalpa is a native of most parts of the South and is valued for its durable timber and for ornamental purposes. 4 to 6 ft., 75c; 6 to 8 ft., \$1.00; 8 to 10 ft., \$1.25.

**COTTONWOOD** (*Populus Deltoides Canadensis*)—One of the best of the Poplar family. Large and spreading and used where the effects of the Poplars are desired. Does exceptionally well in the plains country. 4 to 6 ft., 50c; 6 to 8 ft., 75c; 8 to 10 ft., \$1.00.

**CHESTNUT, HORSE**—A large tree of regular outline, 60 to 80 feet tall, completely covered in May with great upright spikes of white flowers. Satisfactory either as a street or lawn tree, particularly desirable where dense shade is required. 3 to 4 ft., \$1.00; 4 to 5 ft., \$1.50.

**CRAB APPLE, Bechtel's Double Flowering**—A handsome little tree seldom over 20 feet in height. One of the finest for lawn decoration. Produces in profusion double, young, and is very fragrant. 2 to 3 ft., \$1.50; 3 to 4 ft., \$2.00.

**DOGWOOD, RED FLOWERING** (*Cornus Florida Rubra*)—Similar to White Flowering Dogwood except that the flowers vary from pink to light red. Grows 10 to 20 feet high. 2 to 3 ft., \$2.50.

**DOGWOOD, WHITE FLOWERING** (*Cornus Florida*)—A slow growing dwarf tree with abundant, large, white flowers appearing very early in the spring before the grayish-green leaves, and followed by attractive red berries. Leaves turn to deep red in autumn. Grows 10 to 20 feet high. 2 to 4 ft., 75c; 4 to 6 ft., \$1.50.

**ELM, AMERICAN**—In our opinion the handsomest and most dignified of all the native trees. Probably more largely planted and better known than any other. A tall growing, stately tree reaching 60 feet, with a wide arching top and vasselike form. Extensively used for street planting where its wide-spreading branches form perfect Gothic arches over the street. 5 to 6 ft., \$1.00; 6 to 8 ft., \$1.50; 8 to 10 ft., \$2.00.

**ELM, CHINESE**—A native of China; a noble, rapid growing tree, forming a very dense head with smaller, darker leaves than the American Elm. Leaves stay on the tree much longer in the autumn; the branches project from the trunk almost at right angles. A real beautiful shade tree for lawn and street plantings. 4 to 6 ft., 75c; 6 to 8 ft., \$1.50; 8 to 10 ft., \$2.00.

**JUDAS TREE** (*Cercis Canadensis*) (Red bud)—A small growing tree of irregular form, with heart-shaped leaves. It is covered with delicate pink blossoms early in spring before the leaves appear. A charming association among the tender greens and bronzes of young foliage. 3 to 4 ft., 85c; \$8.00 per 10; 4 to 5 ft., \$1.00; \$9.00 per 10.

**LINDEN, AMERICANA** (*Basswood*)—A tall growing, stately tree, growing 60 to 80 feet tall, with large shining green leaves and light yellow fragrant flowers in July. A splendid tree for lawn and street planting. Valuable for its beautiful white wood. 5 to 6 ft., \$1.75; 6 to 8 ft., \$2.00; 8 to 10 ft., \$2.50.

**LOCUST, Black** (*Robinia Pseudacacia*)—Popular for both shade and avenue tree, as well as for windbreaks and timber belts; white sweet-scented flowers in spring. 4 to 6 ft., 50c; 6 to 8 ft., 75c; 8 to 10 ft., \$1.00.

**MAPLE, SUGAR** (*Rock Maple*)—One of the most useful of all maples, excellent for street and lawn planting and used extensively in the production of maple sugar. A tree of magnificent proportions, often 80 feet in height, straight, spreading and symmetrical in shape. Long lived. It roots deeply, allowing grass to grow close about its trunk. Dark green leaves turning to scarlet and gold in autumn. 5 to 6 ft., \$1.50; 6 to 8 ft., \$2.00; 8 to 10 ft., \$2.50.

**MAPLE, SILVER LEAVED** (*Soft Maple*)—Leaves white underneath; of rapid growth; very ornamental and one of the best trees we have. 4 to 6 ft., 40c; 6 to 8 ft., 75c; 8 to 10 ft., \$1.00.

New Hartford, Mo.

Dear Sir:

I want to recommend your nursery stock to all my friends. I ordered eight Concord grape vines and two Niagara vines in 1936. They bore a bushel or more fruit the first year after planting. They were received in very good condition.

Last year we had a heavy sleet in April, but they came through and bore a very good crop. The two Niagaras were bitten off by the cows, but they put out and are doing fine now.

I hope to order more from you in the future.

WILFRED WILHOIT.

**MAPLE, NORWAY** (*Hard Maple*)—Is without a doubt one of the most desirable shade trees for street and lawn planting. Of fairly rapid growth, reaching a height of 60 feet at maturity. Sturdy, compact and vigorous, forming a round head of stout branches and broad, deep green leaves. 6 to 8 ft., \$3.00 each; 8 to 10 ft., \$3.50 each.

**MULBERRY, RUSSIAN**—A very hardy, low growing tree, 20 to 30 feet high with beautifully cut foliage and an abundance of fruit which attracts the birds. Not one of the edible varieties. 4 to 6 ft., 75c each.

**PEACH, RED** (*Double Flowering*)—A beautiful small tree rarely over 20 feet tall; at its blooming time in May every twig and branch bright with beautifully formed flowers, rendering the tree showy and attractive at a distance. 3 to 4 ft., 75c each; 4 to 5 ft., \$1.00 each.

**PEACH, Red Leaf**—A very ornamental tree for its foliage. The leaves are blood red from early in the spring until frost. 2 to 3 ft., 75c each; 3 to 4 ft., \$1.00 each; 4 to 6 ft., \$1.25 each.

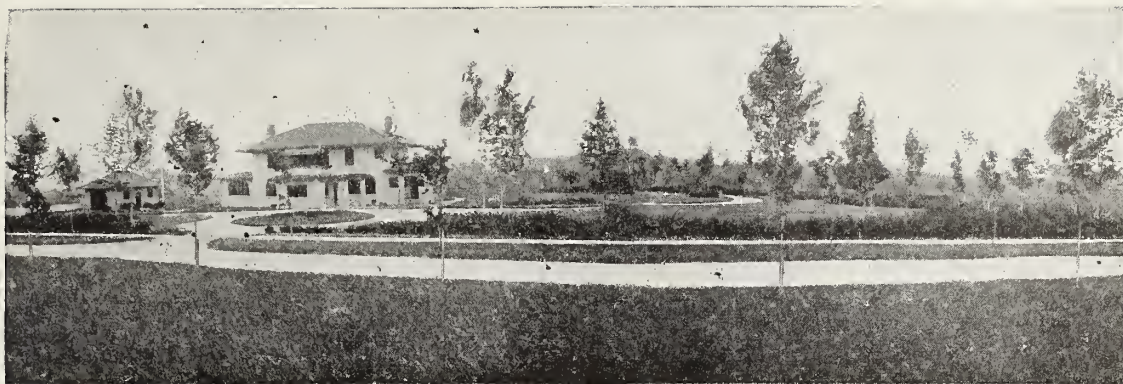
**PERSIMMON, American**—This is the puckery persimmon, an inch or more in diameter, orange yellow, with a bright cheek when touched by frost. The tree is very ornamental, with a round topped head and handsome, shining foliage. 4 to 6 ft., \$1.00 each.

Collinston, La.

Dear Sir:

I received the trees in good shape. I am well pleased with the flowers and trees. Thank you for your kindness.

C. M. HUTCHINSON.

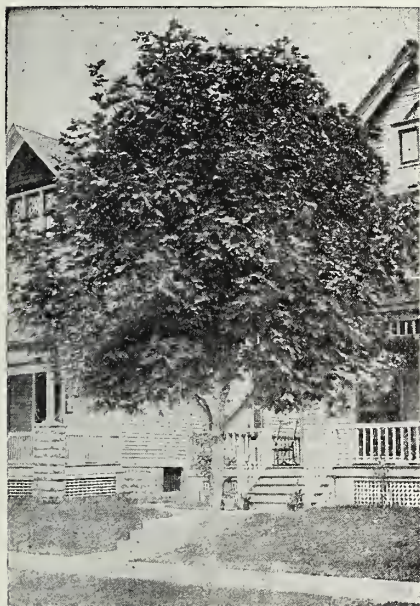


## For Shade, Beauty and Flowers

### Plant Shade Trees for Living Beauty . . .

**POPLAR, CAROLINA**—A very rapid growing tree, giving shade in a very short time. Very easy to transplant and does well on any kind of soil. Desirable for roadside plantings, in parks and along rivers and streams for the protection of the banks. Used extensively for screen to hide unattractive buildings. Attains a height of 60 feet at maturity. Bright, heart shaped, glossy green leaves, silvery white underneath. 6 to 8 ft., 60c each; 10 for \$5.00; 100 for \$40.00. 8 to 10 ft., 90c each; 10 for \$8.00; 100 for \$70.00.

**POPLAR, LOMBARDY**—A tall, narrow tapering tree, 60 feet high at maturity, a striking feature in any landscape. Fine for planting in groups, along driveways, or to make boundary lines. Sometimes used for tall screen hedges. 5 to 6 ft., 60c each; 10 for \$5.00; 6 to 8 ft., 90c each; 10 for \$8.50; 8 to 10 ft., \$1.00 each; 10 for \$9.50.



Sycamore

**SYCAMORE, AMERICAN**—A well known tree, very common throughout the United States; leaves heart shaped at base; the short lobes, sharp pointed branches are wide spreading. 6 to 8 ft., \$1.50; 8 to 10 ft., \$2.00 each.

**SWEET GUM (Liquidamhre styraciflua)**—A native tree that is perfectly hardy. The glossy foliage in summer, the brilliant color in the fall and the unusual appearance of the young branches with corky bark in the winter are considerations that make it especially valuable. 4 to 6 ft. trees, \$2.00 each; 6 to 8 ft., \$2.50 each.

**TULIP TREE (Whitewood)**—One of the grandest of our native trees, of tall pyramidal habit, with broad, glossy, fiddle shaped leaves and beautiful tulip-like flowers; allied to the Magnolia. Leaf color is clean, rather bluish-green shades which in fall turn brightest yellow. Flowers are 1½ to 2 inches long, light greenish yellow marked at inside base with orange; appearing in May or June. 4 to 6 ft., \$1.50 each; 6 to 8 ft., \$2.00 each.

**UMBRELLA CHINA TREE (or Texas Umbrella)**—A sub-variety of the China tree. It assumes a dense, spreading head, resembling a gigantic umbrella, and is of unique appearance. 4 to 5 ft., \$1.50 each; 5 to 7 ft., \$2.00 each; 7 to 9 ft., \$2.50 each.

**WALNUT, BLACK**—Valuable for nuts and timber. It is hardy and succeeds best on a rich, deep, moist soil. Too well known for long description. 4 to 6 ft., 75c each; 6 to 8 ft., \$1.00 each; 8 to 10 ft., \$1.50 each.

**WILLOW, GOLDEN**—A very showy yellow-barked tree reaching a height of 60 feet at maturity. A handsome tree at all seasons, but particularly conspicuous in winter and early spring before the leaves appear. 6 to 7 ft., 75c each; 10 for \$7.00; 100 for \$65.00.



Maple, Norway



Horse Chestnut

Milledgeville, Ga.  
Feb. 5, 1941.

Gentlemen:

Received our order of trees and roses on the 1st. We are highly pleased with appearance of the shipment. We let a relative have our catalogue. He was very much interested when he saw our trees and the price. Hope he gives you an order.

Will let you hear from me this fall if Providence permits.

Sincerely yours,  
J. W. GILMORE.

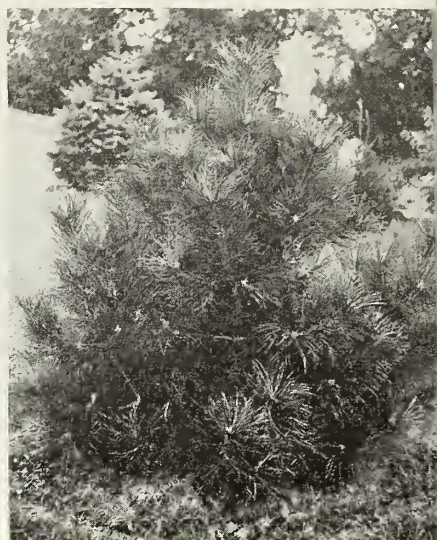


BLUE SPRUCE

Blue Spruce



Evergreen Group



Austrian Pine

## ARBORVITAE

**AMERICAN ARBORVITAE**—A splendid native that grows well anywhere and thrives over a wide range of climate. The habit is erect, and pyramidal, the foliage soft and light green in color. This Arborvitae should be included in groups and all evergreen plantings. They are unequalled as tall hedges to form screens for unsightly objects or for shelter belts or as a blind about clothes yard, etc. They grow quickly and if planted closely in hedges give the desired effects promptly. They may be kept at any height and made more dense and bushy by trimming, which they endure readily. 1 to 2 ft., \$1.50; 2 to 3 ft., \$2.50; 3 to 4 ft., \$3.50; 4 to 5 ft., \$5.00.

**AMERICAN PYRAMIDAL ARBORVITAE**—This exceedingly beautiful Arborvitae is the most compact and erect of the entire species, being in form almost a counterpart of the Irish Juniper. Foliage a deep green, retaining color remarkably well through the entire season and perfectly hardy. 1 to 2 ft., \$3.00; 2 to 3 ft., \$4.50; 3 to 4 ft., \$5.25; 4 to 5 ft., \$6.75.

**BERCKMAN'S GOLDEN ARBORVITAE (Tr. Orientalis Aurea Nana)**—A perfect gem for gardens, cemetery lots, formal plantings, window boxes and tubs. It is of dwarf, compact and symmetrical growth, with golden yellow foliage, 18 to 24 inches, \$2.50; 24 to 30 inches, \$4.00; 30 to 36 inches, \$6.00; 3 to 4 ft., \$7.00.

**CHINESE COMPACT ARBORVITAE (Baker's Golden)**—A low, formal, and very compact variety with bright green foliage, attractive and a great favorite. 3 to 4 ft., \$5.00; 4 to 5 ft., \$6.50; 5 to 6 ft., \$7.50.

**CHINESE PYRAMIDAL ARBORVITAE (T. Orientalis Pyramidalis)**—One of the tallest and hardest varieties; of pyramidal habit and bright green foliage. 3 to 4 ft., \$5.00; 4 to 5 ft., \$6.50; 5 to 6 ft., \$7.50.

**GLOBE ARBORVITAE**—A new variety that is very handsome. In shape it is absolutely round or globular, very dense in growth, and does not require shearing. It does not grow over 4 to 5 feet tall; foliage is deep, dark green, its little branches being of unusual delicacy. Be sure to order one or more of these beautiful and attractive species and we will guarantee that it will please you. This is one of the most rare of the dwarf evergreens. Our trees are well rooted, transplanted and root pruned. 18 to 24 inches, \$3.00; 24 to 30 inches, \$4.00.

## FIR

**DOUGLAS FIR**—Large, conical form, branches spreading, horizontal. Leaves light green above, glaucous below. 5 to 6 ft., \$7.50; 6 to 8 ft., \$10.00; 8 to 10 ft., \$12.50.

# EVERGREENS

● Do not order them shipped by Freight or Express unless you will guarantee to pay the Freight or Express charges.

They will weight from 20 to 100 pounds each depending upon the sizes ordered.

## THE JUNIPERS

**JUNIPER, Andora**—One of the finest spreading Junipers of recent introduction. Grows closer to the ground than the Pfitzer. During summer it has a silver reflex to the otherwise green foliage, in winter it turns a purplish cast, which is unusual in evergreens. 24 to 30 inches, \$4.50 each.

**JUNIPER, Blue (Juniperus Virginiana glauca)**—This is one of the best trees offered today. It grows pyramidal but has graceful, spreading branches if left untrimmed. When sheared, a perfect column may be had. In color a light blue and a distinct contrast from any other of this group. 5 to 6 ft., \$7.50 each.

**JUNIPER, Hill Dundee**—This outstanding juniper is upright growing, is bluish-gray in the spring and summer and changes to a plum-like color in the fall and winter. To create new interest in your evergreen plantings you should include this most excellent new juniper. 2 to 3 ft., \$3.75 each; 3 to 4 ft., \$5.25 each.

**JUNIPER, Irish**—Erect, slender, and formal in habit; column or pyramidal form, foliage sage green, very compact; perfectly hardy and a real beauty in combination with other forms and colors of evergreens. 3 to 4 ft., \$5.00 each; 4 to 5 ft., \$6.00; 5 to 6 ft., \$7.50.

**JUNIPER, Pfitzer's (Chinese pfitzeriana)**—This is the most popular of all the spreading types. Its habit of growth, its pendulous branches and attractive foliage is strikingly beautiful. The branches are horizontally spreading and the terminals slightly drooping. It lays close to the ground and for edging larger plantings there is nothing superior. Flowing lines are especially valuable in landscape planting and this Juniper seems to fill requirements better than any, both summer and winter, because of its ability to withstand the soot and dust of cities will thrive where others fail. 2 to 3 ft. spread, \$3.75 each; 3 to 4 ft. spread, \$5.00 each.

**JUNIPER, Savin**—Handsome, moss green foliage; main branches protruding from the crown at a 45-degree angle; a fine dwarf ground cover, or filler, in evergreen groups; very hardy and suited to most all soils. 1 to 2 ft., \$2.25 each; 2 to 3 ft., \$3.75 each.

**SILVER JUNIPER**—Compact, conical form becoming 20 feet tall at maturity, and one-third as broad. Foliage of attractive glaucous blue. 3 to 4 ft., \$5.25 each; 4 to 5 ft., \$6.75 each.

**SPINEY GREEK JUNIPER**—A very popular dwarf growing Juniper, forming a symmetrical cone of silver blue-green foliage. They make fine plants for grouping or use as single specimens. Extremely hardy and good growers. 2 to 3 ft., \$3.75 each; 3 to 4 ft., \$5.25 each.

## THE PINES

**AUSTRIAN PINE**—From central Europe. Leaves or needles stiff and dark green, hardy everywhere and one of the most valuable conifers for specimen trees or windbreaks, etc. 2 to 3 ft., \$3.00 each; 3 to 4 ft., \$5.00 each.

**PINE, Mugho (Pinus montana mughus)**—This is an excellent dwarf pine, being globe shaped and erect branching. It is very attractive, especially in spring, when the new growth, which seems like miniature candles, completely covers the bush. 12 to 18 inches wide, \$2.50 each; 18 to 24 inches wide, \$3.50 each.

**NORWAY PINE (Red Pine)**—A two-leaved pine, native to Newfoundland; one of the most ornamental; extremely hardy and adaptable; excellent for bold effects. 2 to 3 ft., \$3.00 each; 3 to 4 ft., \$5.00 each.

**SCOTCH PINE**—A rapid grower, very hardy, from central portion of Europe, with short, rigid, light green leaves; very valuable for masses, specimen and screens. 2 to 3 ft., \$3.00 each; 3 to 4 ft., \$5.00 each.

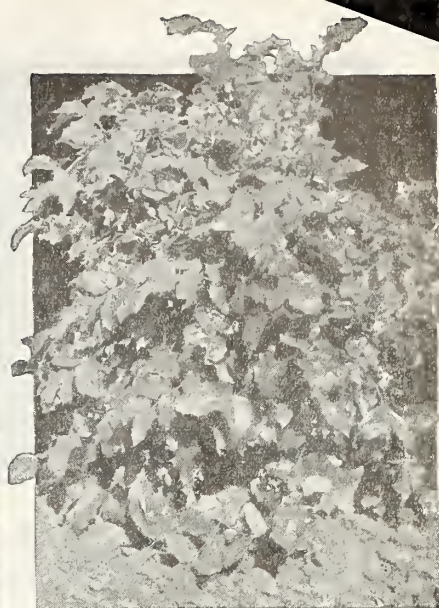
**WHITE PINE**—An old and well known native tree, of rapid growth and entirely hardy. On account of government quarantine, this variety cannot be shipped west of Arkansas. 2 to 3 ft., \$3.00 each; 3 to 4 ft., \$5.00 each.



Abelia, Grandiflora



Evergreen Planting



Mahonia, Aquifolia

# For Year 'Round Beauty

## SPRUCE

**BLACK HILL SPRUCE**—Considered a close relative of White Spruce, from the Black Hills of South Dakota. The foliage runs from green to a bluish tint; some as blue as a Colorado Blue Spruce. One of the hardiest of all Spruces, grows unusually symmetrical, compact and bushy, evident in even the smallest trees, which develop into round, sturdy, compact trees even when small. Tree reaches twenty-five to forty feet with a ten to twelve foot spread of branches. 2 to 3 ft., \$3.75; 3 to 4 ft., \$5.25; 4 to 5 ft., \$6.75.

**COLORADO BLUE**—The queen of the spruce family; the color is a beautiful blue, which holds well all through the year; this is one of the most valuable of ornamental evergreens. 1 to 2 ft., \$5.00; 2 to 3 ft., \$7.50; 3 to 4 ft., \$10.00.

**NORWAY SPRUCE**—Becomes a tall tree of majestic, conical shape. One of the most rapid growing and shapely of the tall, dark green spruces. 2 to 3 ft., \$3.75; 3 to 4 ft., \$5.25; 4 to 5 ft., \$6.75.

**WHITE SPRUCE**—One of the very best conifers, especially for cold climates. Compact, upright growing, long lived, retaining its branches to the ground, aromatic, drought-resisting; varies in color from light green to glaucous blue. 2 to 3 ft., \$3.75; 3 to 4 ft., \$5.25; 4 to 5 ft., \$6.75.

## BROAD LEAVED EVERGREENS

**ABELIA** (*Abelia rupestris grandiflora*)—A beautiful low growing evergreen flowering shrub; leaves a glossy dark green contrasting effectively with the red tinged bark. The numerous small white tinged pink flowers resemble miniature Arbutus, having comparatively deep, slender throats though the individual flower is only about three-quarters of an inch in length. Blooms from June until frost; delicately sweet scented. Occasionally a "wild," vigorous growing shoot appears which should be pinched off when a dense shrub is desired. 18 to 24 inches, \$2.50; \$25.00 per dozen.

**BOXWOOD**, *Buxus sempervirens*—Everyone is familiar with Boxwood and its good qualities. There is hardly a plant that can be used in quite so many positions. For edging as specimens for urns, window boxes, it is very useful. The foliage is always a shining dark green even through the winter. It is a heavy feeder and should never be planted in soil unless it can get plenty of fertility and moisture. 12 to 18 inches, \$2.50; 18 to 24 inches, \$3.50; 2 to 3 feet, \$5.00.

**EVERGREEN EUONYMUS** (*Euonymus Patens*)—One of the best broad leaf evergreens for the Southwest. Luxuriant of growth and naturally symmetrical in shape, is as well adapted for a hedge as for a specimen plant or a background for a shrub group; may be kept in almost any desired shape by pruning; leaves occasionally followed by bright red berries. 2 to 3 ft., \$3.00; \$30.00 per dozen.

**HOLLY, AMERICAN** (*Ilex opaca*)—Everyone certainly knows the native holly with its large, glossy leaves and red berries. Nursery grown plants are comparatively easy to transplant, provided the leaves are clipped off at planting time. This native is not half appreciated as it can be sheared into as compact specimens as Boxwood, or if left to develop naturally makes a bush or small tree that is wonderful at all seasons of the year. 2 to 3 ft., \$4.00; 3 to 4 ft., \$6.00.

**MAGNOLIA GRANDIFLORA**—The grandest of evergreens and flowering trees. Has large, glossy bright green leaves. Succeeds throughout Texas and Oklahoma, as well as in other southern states. By clipping off all but a few of the tip leaves when taken up, and treated as in our handling, they are readily transplanted. 12 to 18 inches, 2.00; 18 to 24 inches, \$2.50; 24 to 30 inches, \$3.50; 30 to 36 inches, \$4.50.

## MAHONIA (*Berberis aquifolia*) (Oregon Grape)

—Dense, low spreading shrub, beautiful holly-like foliage, glossy green, bluish-purple and bronze, moderate growth, 3 to 5 feet, exceedingly hardy; blossoms yellow racemes. March to May, followed by blue grape-like berries. Fine for low shrubberies, mass plantings, individual specimens or groups, equally good in shade or sun. 10 to 12 inches, \$1.50; 12 to 18 inches, \$2.25; 18 to 24 inches, \$3.50.

## NANDINA

—Upright in habit of growth, medium height, narrow pointed foliage which is a rich red when young, turning to dark green when fully matured, and which takes on bright colors during the fall. Flowers are white followed by red berries in the fall, which remain on well into the winter. Thrives in rich soil with good drainage. 18 to 24 inches, \$2.00; 24 to 30 inches, \$2.50.

## How to Plant Evergreens:

(1) Dig hole a foot larger and deeper than ball of earth. Provide good, loamy top soil to fill around ball.



### EVERGREENS (Planted for Windbreak)

- For results in 6 years or more—10 feet apart
- For results in 4 years—5 feet apart (Take out every other tree later.)
- For results in 2 years—2 1/2 feet apart (Gradually thin out to 10 ft. apart as trees develop.)

**NOTE:** Evergreens with bare roots are planted the same as trees. Take care never to leave the roots exposed a single moment.

### Planting B & B Stock

DO NOT REMOVE OR LOOSEN SACK about ball of earth. Plant so that top of sack is below ground.

Marfa, Texas  
Dec. 10, 1941

Benton County Nursery,  
Rogers, Ark.

Dear Sirs:

The order of Evergreens came in fine shape and all look grand. Thanks for the extra ones, and for sending such fine plants.

Very sincerely,

MRS. J. C. DARROCOTT.



Aster Crego, Wilt-Resistant


## BALCONY PETUNIAS

A splendid free-flowering type either for bedding or window boxes. Flowers average 3 inches across.

BALCONY MIXED—Pkt., 15c; 1-16 Oz., 75c.

**Make Your Garden and Flowers Pay**

**DESTROY MOLES WITH MOLOGEN**



Destroys them quickly. Semi-powdered form—easy to use. No odor or gases. Harmless to soil or grass. 1/2 lb. can, 60c, Postpaid.

## TRI - OGEN

### ROSE GARDEN SPRAY TREATMENT

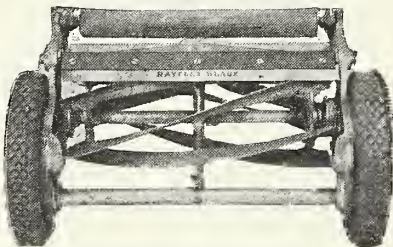
The finest and most complete spray for roses. It kills many insects and controls black spots and mildew. Stimulates plant growth and tends to promote healthy foliage and luxuriant blooms. Small Kit \$1.60, postpaid.

## RAYFLEX Your Lawn

With a RAYFLEX BLADE on Your Old Lawn Mower, and Enjoy the Thrill of Efficiency and a Velvet Lawn.

RAYFLEX replaces the old rigid bed-knife. Installation is almost as simple as changing a razor blade. It gives a clean, even, velvet shear, and improves texture of turf.

RAYFLEX BLADE is in daily use by golf clubs, cemeteries, city parks and private estates and thousands of home owners.



SOLD UNDER MONEY-BACK GUARANTEE  
\$2.10, Postpaid

for all hand mower sizes. Blades for power mowers slightly higher. For size turn mower upside down and measure length of stationary blade.

FLEX-BLADE WORKS

# Beautify Your Home with Flowers

## CREGO GIANT (Wilt Resistant Aster)

This fine variety grows over 2 feet tall and is well branched; of free sturdy growth. The fluffy, graceful flowers are rarely less than 4 inches across and frequently over 5 inches. Fine for cutting. Cattleya (orchid), White, Shell Pink, Rose, Crimson, Azure Blue, Purple. Any of above.

Pkt., 15c; 1/8 Oz., 50c; 1/4 Oz., 75c.  
Mixture of all colors.  
Pkt., 15c.

## CACTUS

Fill a shallow pot with equal parts of coarse sand and leaf mold. Sow seeds and cover with sand or small gravel, protect with glass and keep moist in a warm shaded situation. Transplant seedlings to open pots. Pkt., 15c.

## MIXTURE EARLY SPENCER SWEET PEAS

Be sure to shade the bed if planted in hot weather and when they begin to bloom do not overwater. One good deep irrigation each week will be plenty in medium heavy soil. If they are watered too much, the buds will drop from the stems.

Pkt., 15c; 1 Oz., 40c

**S O R R Y - - -**  
**WE DO NOT ACCEPT ORDERS  
FOR LESS THAN 1 DOLLAR**

## PLANTABBS

A concentrated plant food in tablet form, odorless, clean and easy to use.

10 tablets.....	\$ .10 Postpaid
30 tablets.....	.30 "
75 tablets.....	.55 "
200 tablets.....	1.05 "
1,000 tablets.....	3.60 "

## BUG DUSTER

Bug duster is the regular package for 1 Lb. of Kalite. Eliminates necessity of buying a duster.

1 Lb. Pkg. 45c Postpaid

## TWIST - EMS

... helps you support plants neatly, quickly and permanently!

Say "goodby" to unsightly twine and raffia, to needless work with shears. Say "hello" to TWIST-EMS, to gardening fun, to lovely plants neatly and properly supported.

TWIST-EMS—strong dark green "invisible" tapes with wire reinforcing—protect stems, permanently support annuals, perennials, vines, shrubs and vegetables. Grand for flower arrangement. Millions used by successful nurserymen, professional and amateur gardeners. Buy today.

Box of 125 (8" long) 35c Postpaid

## D. D. T. SPRAY 20%

PEST B. BON—2 to 3 tsp. makes a gallon of spray. Beetles, Worms, Thrips, Leafhopper, Weevils, Ants, Fleas, Mosquitos and many other insects. Full directions on each 4-oz. bottle. REMEMBER that D.D.T. is deadly to certain insects, therefore it will not do away with all other spray materials. For instance, Cockroaches can be controlled by Sodium Fluoride and many other products now in use as well or better than with D.D.T. Be sure you know what insects you want to use D.D.T. on. DON'T be misled by many sales talks. D.D.T. is the Atomic Bomb of the insect world. Follow directions on bottle carefully. 4 Ounces Postpaid, \$1.00.

VOLCK OIL SPRAY for mealybugs, scale insects, Redspiders, White flies and is a good carrier when mixed with D.D.T. to improve wetting and spreading. 35c Postpaid.

BUG-GETA-PELLETS—Use against Slugs, Snails, Cutworms, Grasshoppers, Strawberry Root Weevil, Sowbugs, Army Worms and other insects. Compressed Bait Price, 35c Postpaid.

## CALIFORNIA GIANT ZINNIAS

(For Long Stemmed Bouquets)

These are the tallest of the zinnias, the longest stemmed, so they are particularly good for cutting. The flowers are 5 to 6 inches across on strong stems, and are very striking in vase or basket. The plants grow 3 to 4 feet high, are well branched and produce many fine flowers. Pkt., 15c.

## Single Nasturtiums

The old-fashioned single flowered nasturtiums which are still popular.

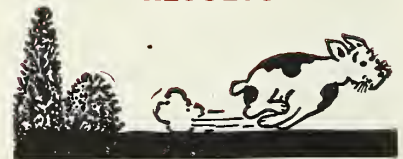
DWARF SINGLE MIXED... Pkt. 10c; Oz., 50c.

## SHOO-FLY PLANT

It is said that flies will not stay in a room where it is grown if they can conveniently escape. What it is about it that repulses them is not clear, as the plant and flowers have no odor. It is a beautiful flowering plant, and blooms in a short time (60 days) from seed. It is a profuse bloomer in pots both summer and winter, the blooms being large, cup-shaped and of a lovely light blue color with white center.

Pkt., 10c; 3 Pkts., 25c

## USE OUR PRODUCTS FOR RESULTS



## "DOGZOFF"

DOGZOFF—Protects your plants from dogs, cats, moles, mice, rabbits, etc. Not harmful to plant life. Simply spray on plants. No mixing. 3 Oz. bottle 70c, postpaid.

## TRANSPLANTONE

The Vitamin-Hormone stimulant. One ounce makes 1,000 gallons' solution. Most effective form for Vitamin B-1. Use on all kinds of flowering plants, shrubs, seedlings, trees and vegetable plants when planting.

1/2 Oz., 25c; 3 Oz., \$1.00;

1 Lb., \$4.15 Postpaid

## PLANT BY THE MOON

256 PAGES

By Llewellyn George

Well known Author and Lecturer

The Moon Sign Book gives complete instructions in the use of planetary influence on planting and harvesting, also business and personal affairs, etc., the result of more than thirty-five years of research. Why do farmers plant Potatoes in the dark of the moon? When should Corn, Beans, etc., be planted? Why florists plant seeds in the 2nd quarter and a certain Moon Sign? Why you should plant flowers in Libra on a certain date and Moon's phase? These and many other questions are answered and explained in a simplified yet scientific and practical manner. The Moon Sign Book has been published annually for over 37 years, with sales increasing each year. A mine of useful information. Price. \$1.00 in the U. S.



# VEGETABLE SEEDS

**From Benton County  
Nursery Are Top Quality  
Tested Seeds--Best by  
Every Test**

*Plant a Garden for Health  
and Wealth*

**THESE PRICES CANCEL ALL PREVIOUS QUOTATIONS**

## BEANS

Plant bush beans in rows 2 feet apart and about 4 inches apart in the row. Pole varieties are best planted in rows and each plant staked with a pole to stand 6 feet out of the ground.

2 Oz. Pkt., 10c; 7 Oz., 30c;

2½ Lbs., \$1.10; 14 Oz., 45c

**IMPROVED GOLDEN WAX**—Early bush. Stringless.

**FULL MEASURE**—Bush. Stringless. Deep green in color.

**TENDERGREEN**—The best bush bean grown.

**BOUNTIFUL**—Bush. Very early and a heavy bearer.

**KENTUCKY WONDER**—Pole bean. The old stand-by in pole beans.

**Pkt., 15c; 7 Oz., 40c; 2½ Lbs., \$1.30**

**1200 TO ONE BEAN**—Bush. Over 200 pods have been grown on a single plant producing 1,200 beans from one bean.

## BEETS

Beets may be planted at intervals to keep the supply young and tender. Sow one ounce in about 50 feet of row. Cover one inch and firm the soil to the seed. During the thinning, the small beets may be cooked with the tops on. These are very good, vitamin-rich greens.

**Pkt., 10c; 1 Oz., 35c; ¼ Lb., \$1.00; 1 Lb., \$3.00**

**DETROIT DARK RED**—Tops are medium, dark green tinged with red. Roots globular, smooth, uniform, with a small tap root. It is one of the darkest red beets, sweet, tender and of fine quality.

**CROSBY'S EGYPTIAN**—Table or market size beets in 58 days. Roots are flat globe-shaped, with a small tap root; color purplish red; tops medium size for bunching or greens. A fine beet for home garden or for bunching.

## SWISS CHARD

Culture the same as for Beets.

**Pkt., 10c; 1 Oz., 25c; ¼ Lb., 80c; 1 Lb., \$2.40**

**GIANT LUCULLUS**—Large crumpled leaves with thick light-colored mid-ribs which are delicious when cooked and served like Asparagus, while the leafy parts make excellent "greens."

## CARROTS

The carrot is one of our most important vegetables; from a dietetic standpoint it is particularly desirable for children as it is a rich source of vitamin A, B, and C. Also its yellow coloring matter, known as carotin, is very healthful. They grow to eating size in about 70 days. One ounce will sow over 100 feet of row.

**Pkt., 10c; 1 Oz., 50c; ¼ Lb., \$1.50; 1 Lb., \$4.00**

**DANVERS HALF LONG**—A rich orange-red sort, growing about 8 inches long. Largely used for table use and stock feed as well. Very productive; flesh sweet and crisp.

**CHANTENAY (Red Cored)**—An excellent early half-long stump-rooted variety; 5 or 6 inches long and about 3 inches thick at the shoulder. Bright orange-scarlet, heavy cropper.

**OXHEART or GUERANDE**—A popular short, thick variety about 4½ inches long and 3½ inches thick at the shoulder. A good variety for heavy or stiff soils; heavy cropper.

## NEW CORELESS CARROT

**Pkt., 15c; 1 Oz., 60c; ¼ Lb., \$1.75; 1 Lb., \$4.50**

**NANTES HALF LONG CORELESS**—A crisp, tender carrot of fine flavor. Flesh is reddish orange and practically coreless; tops are small. A good home or market garden variety.

## TOMATOES

**Pkt., 15c; ½ Oz., 50c; 1 Oz., 80c**

**EARLIANA**—Earliest, smooth skin, uniform.

**MARGLOBE**—Globular, almost coreless.

**BREAK-O-DAY**—Early, wilt resistant. Large, fleshy, good quality.

## COLOSSAL TOMATO

**Pkt., 20c; 3 Pkts., 50c**

This is a large tomato, being even larger than the famous Ponderosa. Many planters in different parts of the country have grown Colossal Tomatoes weighing over 3 lbs., and some more than 4 lbs. Not only does the Colossal produce giant fruits but it produces them in abundance. One planter in Illinois raised over a ton of tomatoes from 186 plants. The very thick, meaty flesh, few seeds and mild flavor combine to give the Colossal a quality on a par with its immense size. Unsurpassed for slicing or canning.

## POP CORN

**SOUTH AMERICAN GIANT**—Large 12 to 16 rowed ears of golden yellow kernels which are cream white when popped.

**7 Oz., 35c; 1 Lb., 60c**

## SWEET CORN

Corn is sensitive to frost and may rot in cold or wet ground. Sow the seed when the soil has become warm. It will mature in 80 to 100 days and may be planted until July in hills 2 by 3 feet apart. Cover 8 or 10 seeds about 1 inch deep; thin out to 3 plants to a hill.

**Pkt., 10c; 7 Oz., 25c; 14 Oz., 45c; 2½ Lbs., \$1.10**

**BLACK MEXICAN**—Medium early; the kernels are black when ripe and white when green; ears 8 inches long, well filled and exceptionally sweet.

**GOLDEN BANTAM**—One of the earliest varieties of sweet corn. The ears are medium size, golden yellow, tender and sweet.

## HYBRID CORN

**Pkt., 15c; 7 Oz., 40c; 14 Oz., 70c; 2½ Lbs., \$1.75**

**GOLDEN CROSS BANTAM**—Has become the most popular sweet corn. Last year Golden Cross Bantam sales were greater than any other variety. Grows 6 feet high, ears are 8 inches and very sweet.

## CUCUMBERS

Cucumbers thrive on well-rotted compost and a shovelful of old manure should be placed 6 inches deep under each hill and firmly tramped down. After they begin to set fruit, water freely. They mature in 120 days. One ounce will plant 100 hills.

**COLORADO**—A rich dark green variety, turning partially white when ripened. The fruit is about 7 inches long, straight and uniform in shape.

**LONG GREEN, IMPROVED**—The mature fruit is almost 12 inches long. The skin deep green, the flesh solid, crisp and of fine quality.

**GHERKIN**—A very small prickly variety, very tender and sweet when picked young. Used for pickles only.

**STRAIGHT-8**—Vigorous plants produce dark green, symmetrical fruits 8 to 9 inches long, and 1½ inches thick.

**Pkt., 10c; 1 Oz., 35c; ¼ Lb., \$1.00**

# Fresh Vegetables From Your Garden Are More Delicious

**SOME SEEDS ARE SCARCE**

**BETTER ORDER EARLY**

**AND NOT BE DISAPPOINTED**

**We Pay Postage On Seeds**

All 10c Pkts., 3 for 25c  
All 15c Pkts., 2 for 25c

## PEAS

Peas are generally considered a cool weather crop and may be grown during the winter months where the climate is mild 1 Lb. to 100 ft. row.

Pkt., 10c; 7 Oz., 35c; 14 Oz., 50c;  
2½ Lbs., \$1.25

### TRY THIS NEW AMERICAN DROUGHT-PROOF PEA

Laughs at Drought. Smiles at Rain. For midsummer planting this is the variety to plant. If it rains and the soil is kept moist, this variety will produce as large a crop as any variety we know of. If it doesn't rain, and it gets hot and dry, you will get a crop anyway. The handsome round pods are well filled with from 7 to 10 peas in a pod; quality excellent, sweet and tender, even when the peas are large. Vines grow 2 feet high, and require no support. This is the pea that will do its best in the North, South, East or West. Don't fail to try it.

#### PRICES ON PEAS LISTED BELOW

Pkt., 10c; 7 Oz., 25c; 14 Oz., 45c;  
2½ Lbs., \$1.05

**ALASKA**—Height 24 to 30 inches; a very early variety with smooth, small peas of good quality, and short well filled pods. This is a hardy winter sort and usually the peas will not rot in cold wet soil.

**AMERICAN WONDER**—An extra early sort and a heavy cropper, ready to pick in 45 to 50 days from time of planting. The vines require no support as they only grow 12 to 15 inches high.

**THOMAS LAXTON**—Unsurpassed for the home garden. Grows 3 to 3½ feet tall producing large dark-green pods filled with large tender peas.

**LITTLE MARVEL (Tender, Heavy Yielder)**—It will be a long time 'til we find a better one than this. For quality, yield, earliness, or any other point, it's hard to beat. A vigorous grower and a heavy yielder. Three quarts of pods will often shell out a quart of peas. Tender and sweet, and of finest quality.

## LETTUCE

### Loose Leaved Varieties

Pkt., 10c; Oz., 30c; ¼ Lb., 85c

**BLACK SEEDED SIMPSON**—A favorite among the loose leaved kinds, very crisp and tender.

**EARLY CURLED SIMPSON**—The best of early varieties of the loose leaved kinds; leaves light green, crisp and fine flavor.

## HEAD LETTUCE

Pkt., 10c; Oz., 35c; ¼ Lb., \$1.10

**NEW YORK NO. 12 (Or Los Angeles Market)**—An improved type, early and sure heading. Is of fine appearance, excellent quality and has a large percentage of perfect heads.

**BIG BOSTON**—A variety highly recommended for home gardeners. Sure header, medium size, outer leaves attractive green color tinged with brown. Heads are a crisp, fine buttery flavor. Be sure to plant this variety in your home garden.

## CHICKEN LETTUCE

Pkt., 10c; Oz., 35c; ¼ Lb., 75c

## CABBAGE

Pkt., 10c; ½ Oz., 30c; 1 Oz., 65c;  
¼ Lb., \$1.85

**EARLY JERSEY WAKEFIELD**—Early. Pointed firm heads.

**COPENHAGEN MARKET**—Big yielder.

**MAMMOTH RED ROCK**—The best and largest red cabbage grown.

**PREMIUM LATE FLAT DUTCH**—Late variety. Large, solid head.



## GARDEN HUCKLEBERRY

Pkt., 10c; 3 Pkts., 25c

The Garden Huckleberry produces from seed the first year. A new fruit that cannot be excelled for pies and preserves. Very prolific, yielding an immense crop of fruit. It is an annual and must be planted each year from seed. Grows and thrives in all climates and on all kinds of soil. The fruit grows larger than the common huckleberry or blueberry. If cooked with apples, lemons, or anything sour, they make the finest jelly. You will be delighted and astonished with this easily grown, wonderful novelty.

## MAMMOTH PRIZE WATERMELONS

Pkt., 15c; 2 Pkts., 25c; ¼ Lb., \$1.25

Mammoth Prize is the largest Watermelon grown. Many grow to from 100 to 150 lbs. On one vine, 5 melons were grown that weighed 152, 151, 149¼, 148¾, and 147 lbs., the five weighing a total of 748 pounds. The seed we offer is extra select, and should produce fine, sweet, juicy melons of excellent quality and enormous size.

## WATERMELONS

Pkt., 10c; 1 Oz., 25c; ¼ Lb., 75c

**TOM WATSON**—An old favorite, flesh is deep, bright red color.

**CALIFORNIA HONEY**—A small type melon just the right size to fit into your ice box.

**KLECKLEY SWEET**—Early and fine sweet flavor.

## PUMPKIN

Pkt., 10c; ¼ Lb., 75c

**MAMMOTH KING**—Skin reddish-yellow; bright yellow flesh. Very productive and generally grown for stock feed. Pumpkins weighing 40 to 60 pounds are not unusual on fertile soil.

**SWEET POTATO**—The best for making pies and custards.

## MUSKMELON

Pkt., 10c; Oz., 35c; ¼ Lb., \$1.00

**SUGAR ROCK**—The rind is tough and the flesh firm; good shipper.

**HONEY DEW, THE FAMOUS MELON**—Green flesh, fine for home and market. Juicy and sweet.

**HALE'S BEST**—Sweet, early.

## ONIONS

Pkt., 15c; 1 Oz., \$1.00

### EBENEZER, The Extra Early, Long Keeping, Mild Onion

One of the mildest flavored onions grown. The flesh is white, firm and of a very delicate flavor. The onions are quite similar to Yellow Globe Danvers in shape but much larger in size, yellow skinned and have very small tops and mature early. Many people who know this onion will have no other kind for their own table.

### White Sweet Spanish

Large, mild and sweet. Pure white. A much better keeper than the Bermuda.

## RADISH

Pkt., 10c; Oz., 25c; ¼ Lb., 75c

**ICICLE**—A delicious and attractive white variety; about 5 inches long.

**CRIMSON GIANT**—A round radish of large size and remaining in good condition for a long time.

**EARLY SCARLET TURNIP**—Is a small, turnip shaped variety; and in color entirely crimson.

## OKRA

Pkt., 10c; Oz., 20c; ¼ Lb., 65c

**MAMMOTH LONG GREEN**—Grows 3 to 4 feet high, producing dark green pods 7 to 8 inches long, ribbed and tapered.

## PEPPERS

Pkt., 15c; ½ Oz., 75c; Oz., \$1.35

Now ¼ inch deep in hotbeds and, when danger from frost is over, transplant in rows 2 feet apart and 18 inches in row, in good rich ground. They mature in 140 to 150 days.

**CALIFORNIA WONDER**—The best large fruited sweet pepper; very smooth, heavy and free from wrinkles. Meat exceedingly thick, tender and of the finest flavor.

## MUSTARD

Pkt., 10c; Oz., 25c; ¼ Lb., 75c

**TENDERGREEN**—A quick growing variety. Leaves are oblong, thick, fairly smooth and dark green with lighter green ribs. Is resistant to heat and dry weather.

**SOUTHERN GIANT CURLED**—The leaves are large, much crumpled and frilled at the edges. Valued on account of its hardness and good quality.

## SPINACH

Pkt., 10c; 1 Oz., 25c; ¼ Lb., 65c

**BLOOMSDALE SAVOY**—Extra dark green strain. A new, beautiful, better and darker strain. Its glossy green color gives the plants a fresh appearance for a longer time and it is quite early. The leaves are large, fleshy and deeply crumpled. The plants are of upright growth.



# Benton County Nursery Company

## OUR CASH PLAN ORDER SHEET

(FOR CREDIT PLAN ORDERS USE ORDER SHEET ON OPPOSITE PAGE.)

Be Sure to Read Ordering Instructions Carefully Before Filling In Your Order.

All Members of Same Family please order under same name, preferably head of Family

WE CANNOT ACCEPT ORDERS FOR LESS THAN \$1.00

### GUARANTEE

On proper proof, we will replace free of charge any trees, shrubs, etc., that prove untrue to label, or refund the amount paid, optional with us. Because of the many factors over which we have no control, we cannot be responsible for the crop, nor for any amount greater than the purchase price, all claims, except stock not true to name, must be made before May 1st. after planting. If stock has been planted and handled according to our instructions, we will replace, free of charge all stock that does not start growth, and will replace at one-half price all stock that does start growth and then dies and is reported to us before May 1st. after purchase.

Check below how you want your order shipped:

EXPRESS                  PARCEL POST                  FREIGHT




Unless you want us to use our judgment in giving you other varieties in place of any article we are out of, write NO here:

MR. \_\_\_\_\_

(Write Here Name of Person who is to receive order.)

Ship To \_\_\_\_\_ State \_\_\_\_\_

(Name of Town to be shipped to.)

Street No. \_\_\_\_\_ or R. F. D. No. \_\_\_\_\_ Box \_\_\_\_\_

Date \_\_\_\_\_ Amount enclosed \$ \_\_\_\_\_

Please Give Name of Express Office If Different from Post Office \_\_\_\_\_

All stock prepaid except Balled and Burlaped Evergreens, which must be shipped to you collect for the transportation charges.

Please do not send postage stamps in payment of your order, as we use a postage meter.

We will ship this order at the earliest favorable date, unless you specify when you want shipment made. Write here any special instructions you want us to have:

Quantity	Name of Variety	Size	Each Price	Total Amount

IF YOU HAVE MOVED since sending your last order, PLEASE GIVE YOUR FORMER ADDRESS BELOW

NAME \_\_\_\_\_

STREET \_\_\_\_\_

TOWN \_\_\_\_\_ STATE \_\_\_\_\_

IN WRITING US, please don't put your letter on the sheet with your order. Put your letter on a separate sheet, so that we can answer your letter WHILE THE ORDER IS BEING FILLED AND WILL NOT DELAY ORDER OR LETTER.



OUR CREDIT PLAN ORDER SHEET

(FOR CASH ORDERS USE ORDER BLANK ON OPPOSITE PAGE)
NO PAYMENT PLAN ORDERS ACCEPTED AFTER MARCH 15th

Benton County Nursery Company

ROGERS, ARKANSAS

On orders amounting to Ten (\$10) Dollars and up, we will be glad to make the following terms to responsible people in order that you may buy and plant what Nursery Stock, Seeds and Plants you will need, while the season is on to plant them and pay the balance due on them after they are planted. This enables you to have the stock coming on while you are paying out the balance due.

In buying on our credit plan your order must amount to \$10 or more. To each dollar your order amounts to, add 6 cents. This is done to defray the extra expense of taking care of the Credit Plan orders.

One-half of the amount of the order is to be paid down with the order, or before shipment date. The balance due is to be paid in three equal payments, as follows: One-third of the amount due to be paid one month (30 days) from date of shipment. Second payment of one-third of the amount due is to be paid two months (60 days) after date of shipment. The third payment of one-third the amount due is to be paid three months (90 days) after date of shipment. You may if you prefer send a deposit of 20 per cent of the amount of the order and we will ship C. O. D. for the balance due on the first payment.

We prepay transportation charges on all orders amounting to \$10, and up, except Balled and Burlapped Evergreens. Be sure to give your Post Office and Express Office if Express Office is not same as your Post Office.

We guarantee our stock to reach you in good condition. If found otherwise, return to us immediately by express or mail, and we will refund every penny paid to us and paid by you for express or postage. Weather and soil conditions, and the way stock is handled after it leaves us have much to do with stock growing off and doing well, all these being beyond our control. You can see that we cannot guarantee anything to live and grow, because that depends entirely upon conditions beyond us, and in making this order you agree.

Find enclosed \$ One-half of the amount of this order. Thirty days after shipment of this order I will send you one-third of the balance due and same amount each 30 days thereafter until balance due is paid.

I submit following statement of facts to induce you to extend credit on easy payment basis:

I have lived here since (Own or rent home)

My former address was Married or single

Age Occupation My average monthly income is \$

If working for wages, give name of employer

How long have you worked for him?

Please give here the names of 3 references:

Banks or Business Houses preferred

Where do you intend to plant the goods ordered?

Do you own or rent this land? In whose name is the title?

How much has been paid on this property? Any payments past due?

If so, for what amount? \$ What is the value of the land and buildings? \$

Your Signature

Street No. Rural Route Box No.

Post Office State

IN ORDER TO PREVENT DELAY OF YOUR ORDER be sure that you have given 3 complete addresses of your references as this is absolutely necessary for our files before we can complete your order.



# PRICE LIST for Items Listed in Regular Catalog

Effective October 1, 1946. (Subject to change without notice)

THESE PRICES CANCEL ALL PREVIOUS QUOTATIONS

## Benton County Nursery Co., Rogers, Ark.

### APPLES \_\_\_\_\_ Pages 2, 3, 4

Each \_\_\_\_\_  
Under 1 ft. (~~Only 10 to a Customer~~) \_\_\_\_\_ 12c

### PEACHES \_\_\_\_\_ Pages 6, 7

	Each	10	100
	Rate	Rate	Rate
1 to 2 ft. _____	20c	20c	20c
2 to 3 ft. _____	50c	45c	40c
3 to 4 ft. _____	70c	65c	60c
4 to 5 ft. _____	95c	90c	85c

### SIX NEW VARIETIES OF

APPLES (Except as Noted) Page 4  
and

### IMPROVED PEACHES

(Except as Noted) \_\_\_\_\_ Page 7

	Each	10	100
	Rate	Rate	Rate
2 to 3 ft. _____	60c	50c	45c
3 to 4 ft. _____	80c	70c	60c
4 to 5 ft. _____	\$1.00	95c	90c
5 to 6 ft. _____	\$1.10	\$1.05	\$1.00

PLUMS \_\_\_\_\_ Page 8

APRICOTS \_\_\_\_\_ Page 5

NECTARINES \_\_\_\_\_ Page 5

PEARS \_\_\_\_\_ Page 9

	Each	10	100
	Rate	Rate	Rate
2 to 3 ft. _____	\$1.00	92c	88c
3 to 4 ft. _____	\$1.20	\$1.14	\$1.10
4 to 5 ft. _____	\$1.40	1.36	1.30
5 to 6 ft. _____	1.60	1.54	1.50

### CHERRIES \_\_\_\_\_ Page 5

	Each	10	100
	Rate	Rate	Rate
2 to 3 ft. _____	\$1.20	\$1.10	\$1.00
3 to 4 ft. _____	1.50	1.40	1.30
4 to 5 ft. _____	1.80	1.70	1.60

### EVERBEARING MULBERRIES \_\_\_\_\_

Page 9  
3 to 4 ft. \_\_\_\_\_ \$1.00

### CONCORD GRAPES Page 15

	Each	10	100	1000
	Rate	Rate	Rate	Rate
1-yr. size _____	10c	8c	6c	5c
2-yr. bearing size _____	15c	12c	10c	9c

### CONCORD SPECIAL Page 15

5c Ea.; \$4.50 - 100; \$40. - 1000

### GRAPES \_\_\_\_\_ Page 14

	Each	10	100
	Rate	Rate	Rate
1-yr. size _____	12c	10c	9c
2-yr. bearing size _____	18c	15c	12½

### OUR FOUR BEST GRAPES \_\_\_\_\_

Page 14  
15c Ea.; \$1.50 Doz.; ~~\$10 per 100~~

## HYBRID

**PERSIMMONS** ..... Page 18

2 to 3 ft. .... \$1.50

---

**FIGS** ..... Page 8

2 to 3 ft. .... 75c each \$ 7.50 dozen

3 to 4 ft. .... \$1.00 each 10.00 dozen

---

**BOYSENBERRY** ..... Page 12

Each...12c Dozen...\$1.20 100...\$8.00

~~1,000...\$60.00~~

---

## THORNLESS

**BOYSENBERRY** ..... Page 12

Each...20c Dozen...\$2.00 100...\$15.00

---

**RASPBERRIES** ..... Page 10

Each...12c Dozen...\$1.20 100...\$8.00

~~1,000...\$60.00~~

---

**YOUNGBERRIES** ..... Page 12

Each...8c Dozen...80c 100...\$6.00

~~1,000...\$50.00~~

---

**CURRANTS** ..... Page 10

50c each \$5.00 dozen

---

**GOOSEBERRIES** ..... Page 10

50c.each \$5.00 dozen

---

**BLACKBERRIES** ..... Page 12

Each...6c Dozen...60c 100...\$4.00

~~1,000...\$30.00~~

---

**DEWBERRIES** ..... Page 13

Each...6c Dozen...60c 100...\$4.00

1,000...\$30.00

---

**STRAWBERRIES** ..... Page 11

Each...2c 100...\$1.50 1,000...\$12.00

---

## EVERBEARING

**STRAWBERRIES** ..... Page 11

GEM Variety—

25 plants...\$1.50 50 plants...\$2.75

100 plants... 4.00 500 plants...15.00

1,000 plants...\$25.00

---

**PECANS** ..... Page 18

1 to 2 ft. .... \$2.00 Each

---

Nursery stock of fruits and nuts are scarce this season and will be for a few years to come, because so many of the experienced growers have been in the Armed Forces.



# GREATEST BARGAIN IN A NEWS MAGAZINE

PATHFINDER, the Oldest News magazine, now greatly improved with bigger issues and better paper, brings you in every issue news of the World, the Nation and of Communities like yours. Tells you what's going on while it's going on and what it all means. Finely illustrated with latest news pictures. At \$1 for One Full Year or Three Years for only \$2, you can't afford to be without it. No liquor or objectionable advertising.

See  
Other  
Side

PATHFINDER, Dept. C, Washington 5, D. C.  
Please enter my subscription as checked.

Name \_\_\_\_\_

Box \_\_\_\_\_ or Street \_\_\_\_\_

P. O. \_\_\_\_\_ State \_\_\_\_\_

*Recommended by*

**BENTON COUNTY NURSERY CO., INC.**

**IMPORTANT:** Mail direct to PATHFINDER with remittance (at our risk). Offer good only in U. S.

CHECK OFFER

1 YEAR \$1

BARGAIN  
OFFER

3 YEARS \$2

ONE FULL YEAR \$1  
(26 Big Issues)

or greater bargain

THREE YEARS \$2  
(78 Big Issues)

# Pathfinder

EVERY-OTHER-WEEK  
The Family News Magazine in  
its 53rd Year of Continuous  
Publication from Washing-  
ton, the Nation's Capitol.  
It's the One News Magazine  
for Small Town America.

**HONEST • IMPARTIAL • ACCURATE**

You get in every issue the news of the Family, the Nation, the World and communities like yours, written briefly in simple, everyday English. It's for the whole family. **PATHFINDER**, by focusing on the pertinent, meaningful events of today, projects the clearest picture of America's and the World's tomorrows. Our editors report the news while it is happening, and give the background story and significance. Folks have liked it for over 50 years. You will, too.

ONE FULL YEAR \$1  
(26 Big Issues)

OR

THREE YEARS \$2  
(78 Big Issues)

## OTHER REGULAR FEATURES YOU'LL LIKE



*Under the Dome, Timely Washington Letter* — Forecasts of the future with a full page of important late items. The how, why and probable effect of what is happening in Washington. Keeps you up-to-the-minute on things you and your family want to know about.

Lots of one- and two-paragraph human interest items with photographs to give a picture of modern America. News about people—some big people, some movie stars—but in the main, about average people, the ones who make America.

News of general family interest—cooking, new home gadgets, fashions—news items in Religion, Education and Health that affect the home. Also interesting letters from readers on various subjects. Radio, Movies, New Records and Book Reviews. The young folks, too, will get a lot of fun from brain teasers, puzzles, cartoons and jokes.

**PATHFINDER IS A MAGAZINE YOU CAN TRUST.**

Mail this Coupon with check, money order or dollar bill(s) (at our risk) to **PATHFINDER** Dept. C., Pathfinder Building, Washington 5, D. C.

**MAIL TODAY! YOU NEVER GOT SO MUCH FOR SO LITTLE**

USE THIS COUPON AND YOUR SUBSCRIPTION WILL START AT ONCE

If you are now a Subscriber, give this Valuable Coupon to a Friend who is not.





**Family Seed Collection**     **\$1<sup>30</sup>** VALUE FOR **\$1<sup>00</sup>** POSTPAID

- 1 package Scallop Bush Squash
- 1 package Danver's Carrot
- 1 package Detroit Red Beet
- 1 package Colo. Cucumber
- 1 package Icicle Radish

- 1 package Golden Bantam Corn
- 1 package Loose Leaf Lettuce
- 1 package Dwarf Green Okra
- 1 package Rutger's Tomato
- 1 package Purple Top Turnip

- 1 package Tendergreen Bean
- 1 package Swiss Chard
- 1 package Savoy Spinach

You save 30c.

# Everblooming ROSES



Pink Radiance



Roslyn



Kaiseim Aug. Victoria



Etoile de Hollande



Red Radiance



E. G. Hill



Talisman



Caledonia

## ROSE COLLECTION

- |                    |                |
|--------------------|----------------|
| Pink Radiance      | Talisman       |
| Roselyn            | Caledonia      |
| K. A. Victoria     | Rouge Mallerin |
| Etoile de Hollande | Columbia       |
| Red Radiance       | E. G. Hill     |
| Ami Quinard        | Luxembourg     |
|                    | McFarland      |



Ami Quinard

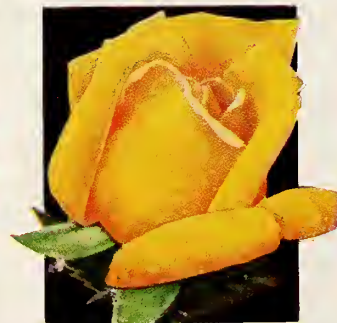
**13**  
Two Year Old  
Field Grown Roses  
Postpaid for  
**\$8.25**



Columbia



Rouge Mallerin



Luxembourg



McFarland