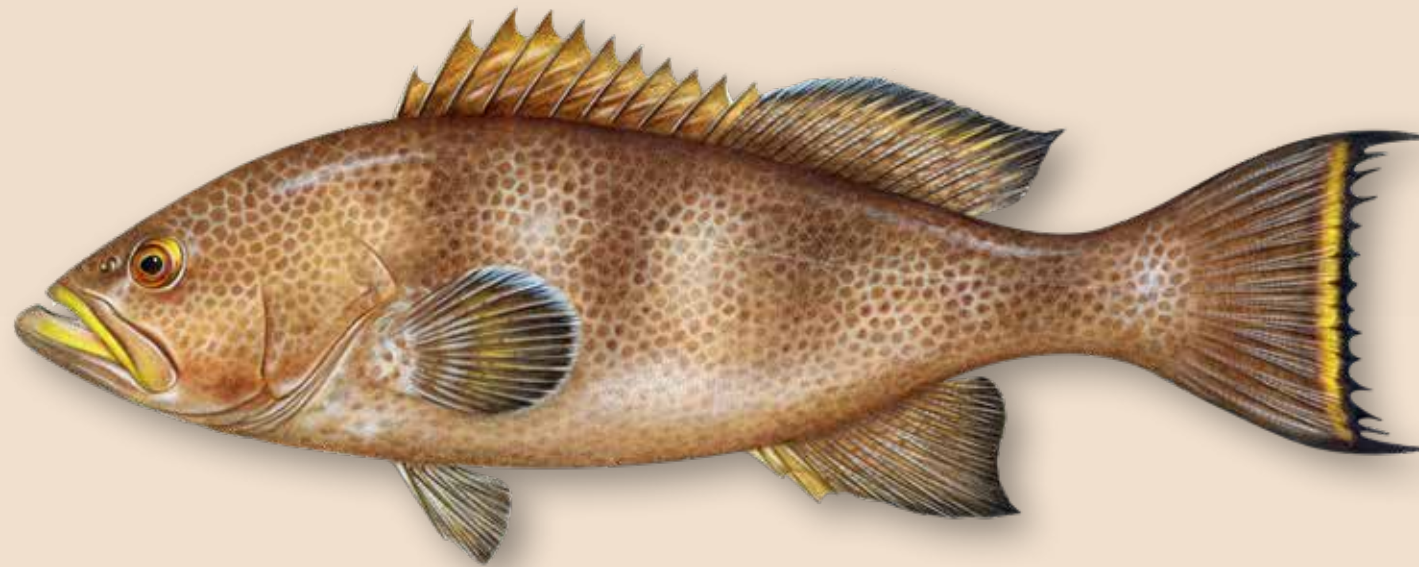


# Groovy Groupers of The Bahamas

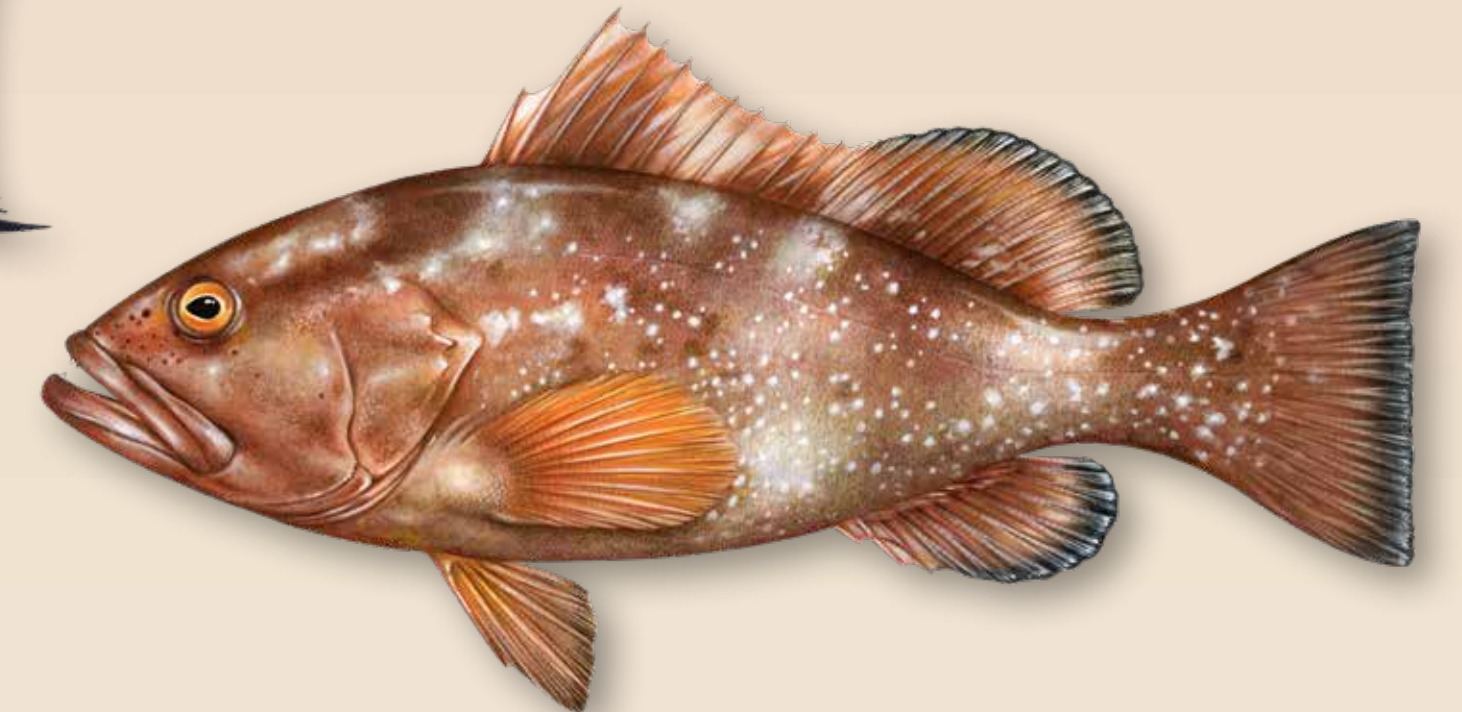
Groupers are a diverse group, including many ecologically and economically valuable species that are listed as threatened on the IUCN Red List. Learn to identify our Bahamian groupers so that you can help ensure their populations remain sustainable!



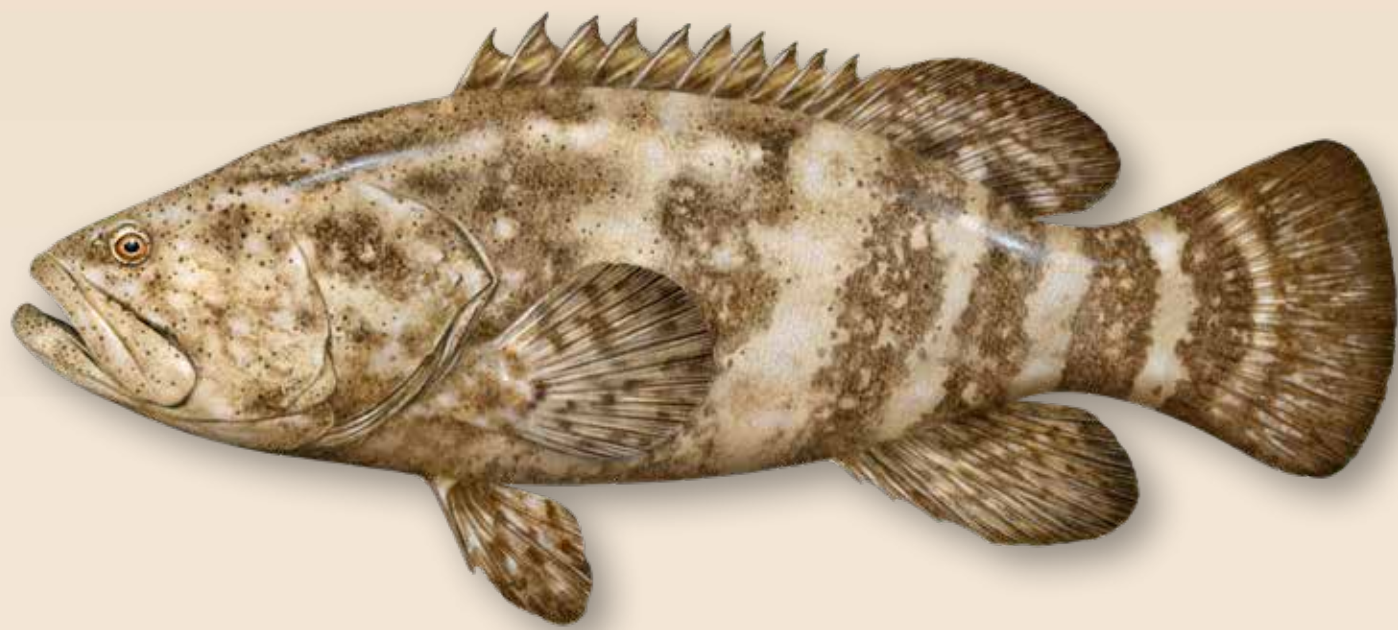
**Nassau grouper** (*Epinephelus striatus*)  
 Conservation Status: **Critically Endangered**  
 Size: 48–122 cm/18.9–48 in total length (TL)  
 [max: 25 kg/55 lb]  
 Sexual Maturity: 48 cm/18.9 in TL  
 Lifespan: 29 years



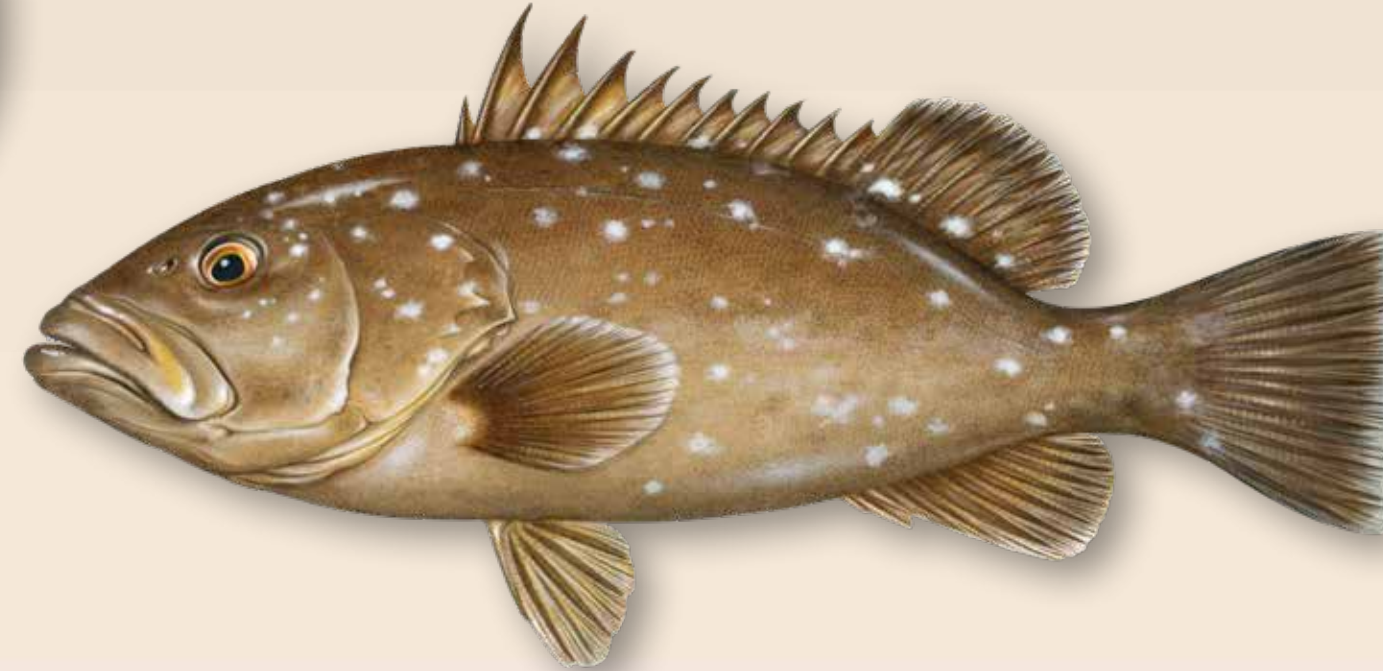
**Yellowmouth grouper** (*Mycteroperca interstitialis*)  
 Conservation Status: **Vulnerable**  
 Size: 40–84 cm/15.7–33.1 in TL [max: 10.2 kg/22.5 lb]  
 Sexual Maturity: 45 cm/17.7 in TL  
 Lifespan: 41 years



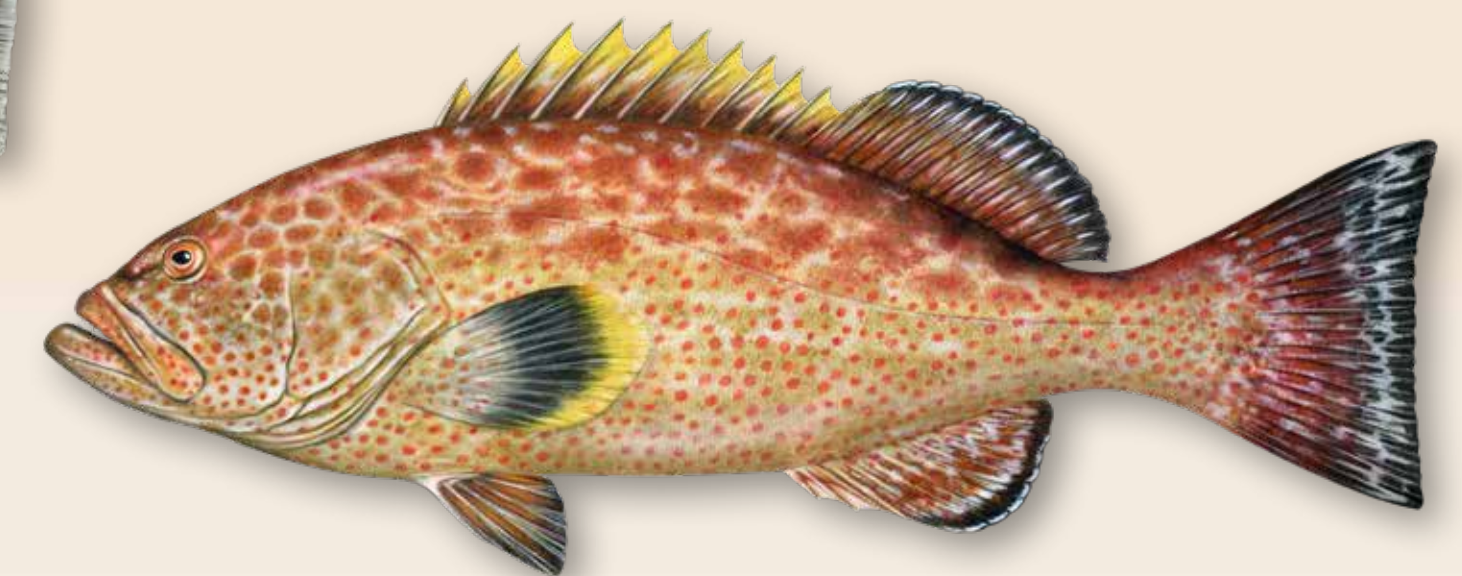
**Red grouper** (*Epinephelus morio*)  
 Conservation Status: **Vulnerable**  
 Size: 50–125 cm/19.7–49.2 in TL [max: 23 kg/51 lb]  
 Sexual Maturity: 50 cm/19.7 in TL  
 Lifespan: 25 years



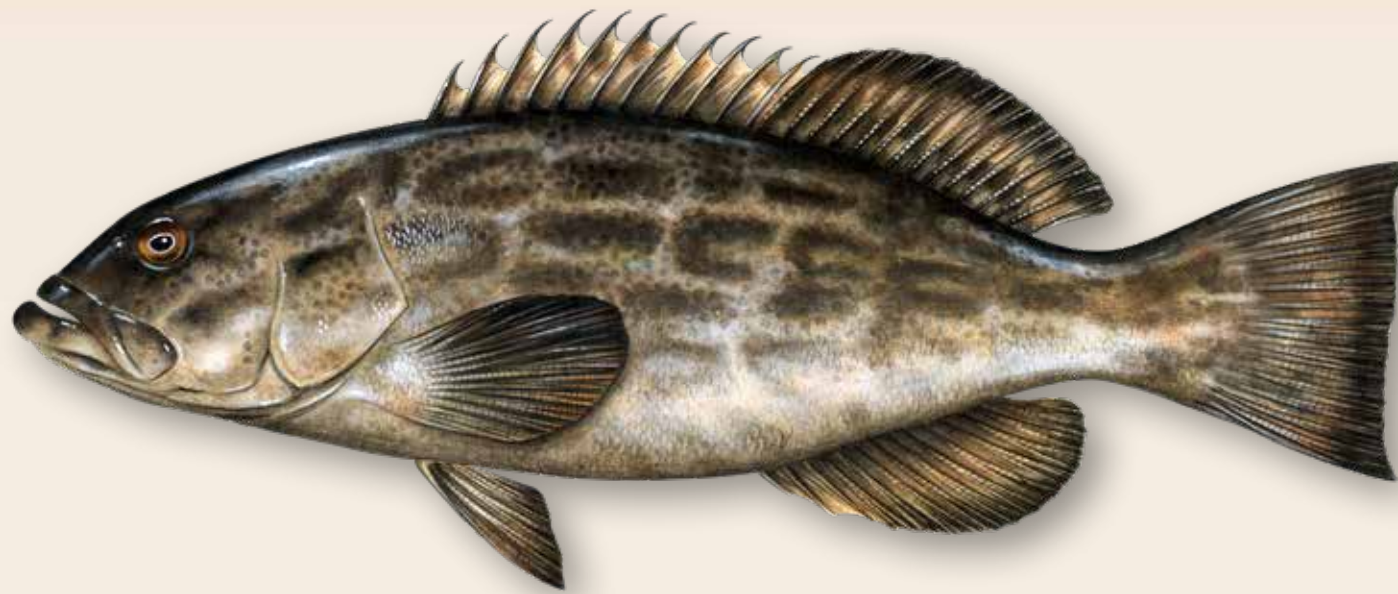
**Goliath grouper** (*Epinephelus itajara*)  
 Conservation Status: **Vulnerable**  
 Size: 150–250 cm/59–98 in TL [max: 455 kg/1,003 lb]  
 Sexual Maturity: 128 cm/50.4 in TL  
 Lifespan: 37 years



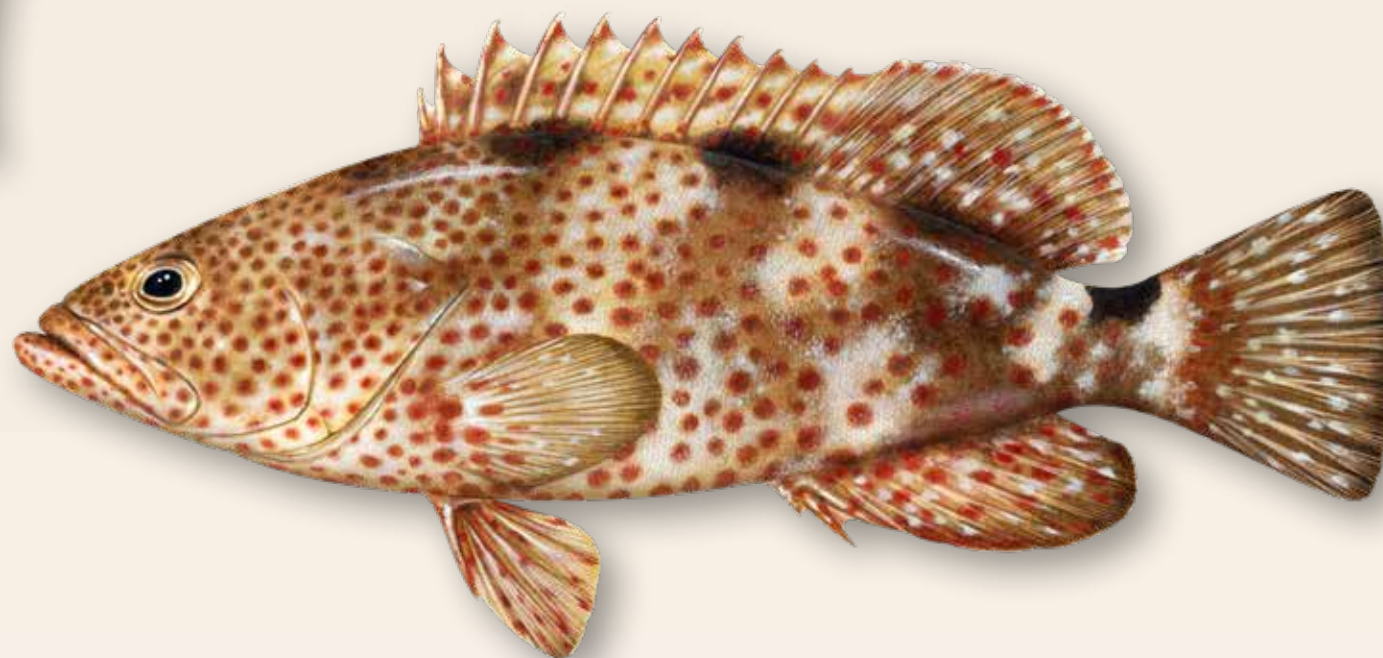
**Snowy grouper** (*Hyporthodus niveatus*)  
 Conservation Status: **Vulnerable**  
 Size: 60–122 cm/23.6–48 in TL [max: 30 kg/66 lb]  
 Sexual Maturity: 54 cm/21.3 in TL  
 Lifespan: 29 years



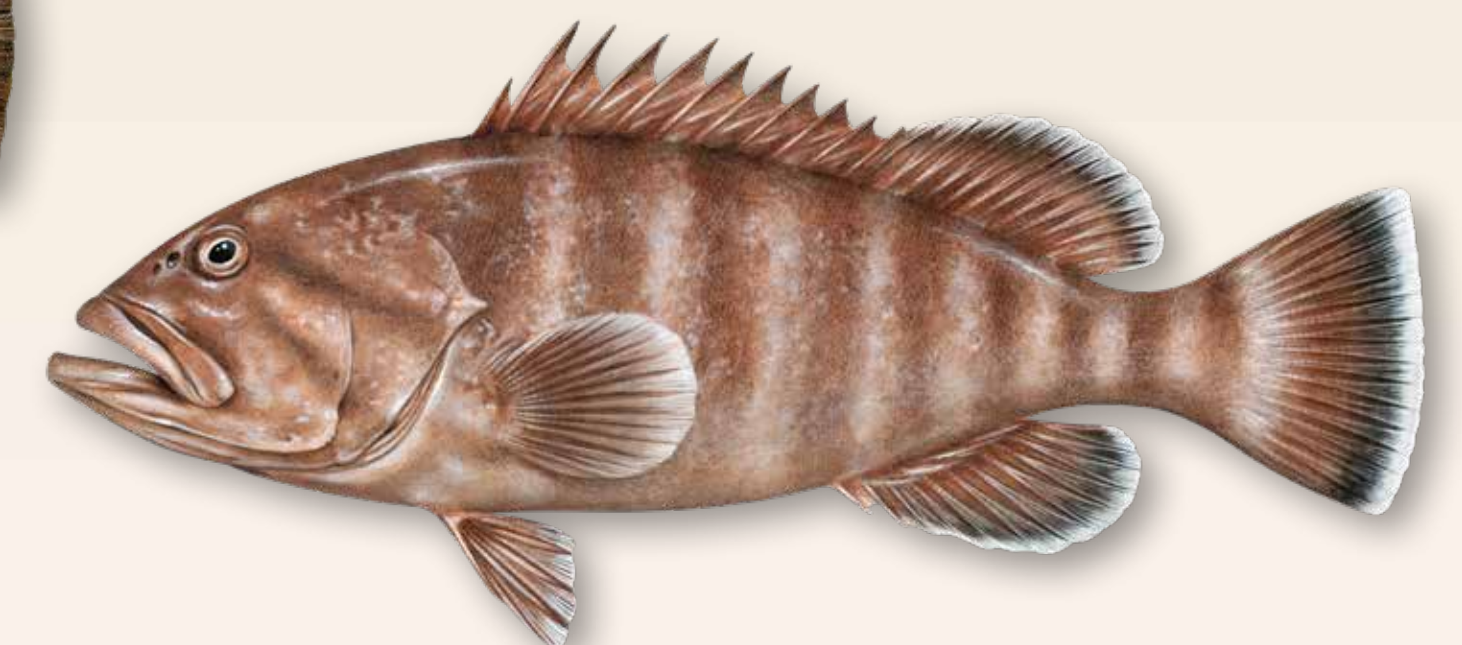
**Yellowfin grouper** (*Mycteroperca venenosa*)  
 Conservation Status: Near Threatened  
 Size: 50–100 cm/19.7–39.3 in TL [max: 18.5 kg/41 lb]  
 Sexual Maturity: 51 cm/20.1 in TL  
 Lifespan: 31 years



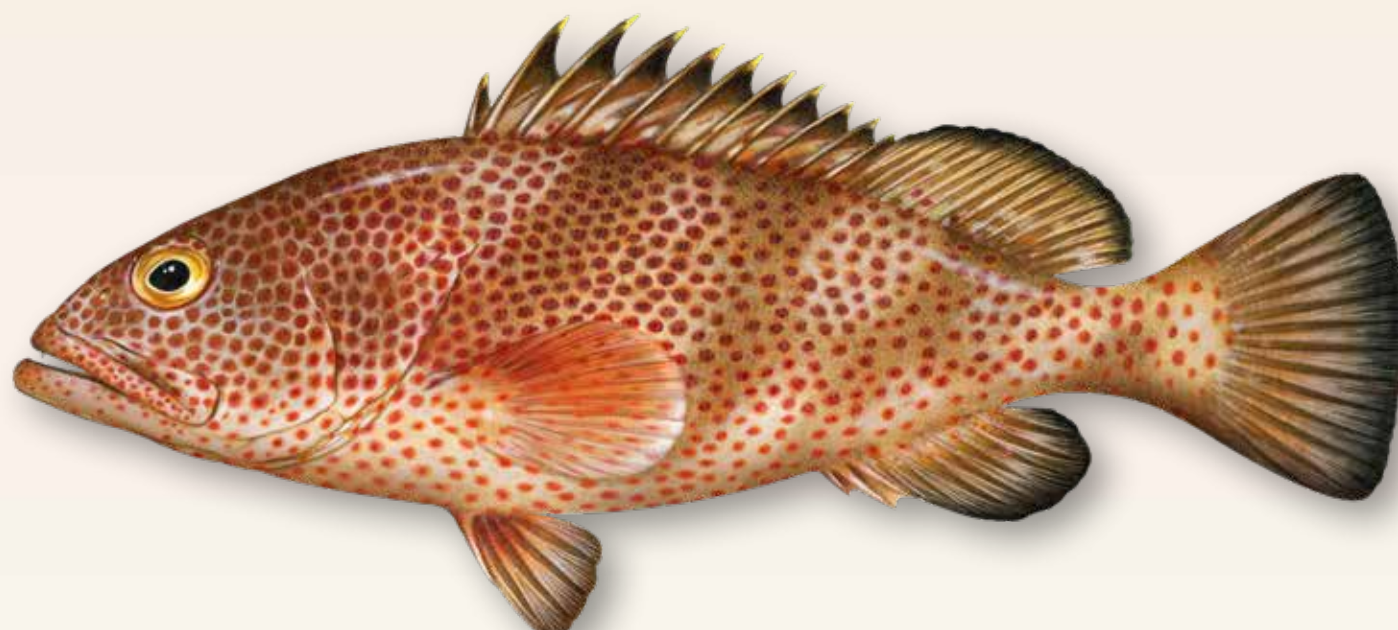
**Black grouper** (*Mycteroperca bonaci*)  
 Conservation Status: Near Threatened  
 Size: 70–150 cm/27.5–59 in TL [max: 100 kg/220 lb]  
 Sexual Maturity: 67.7 cm/26.7 in TL  
 Lifespan: 33 years



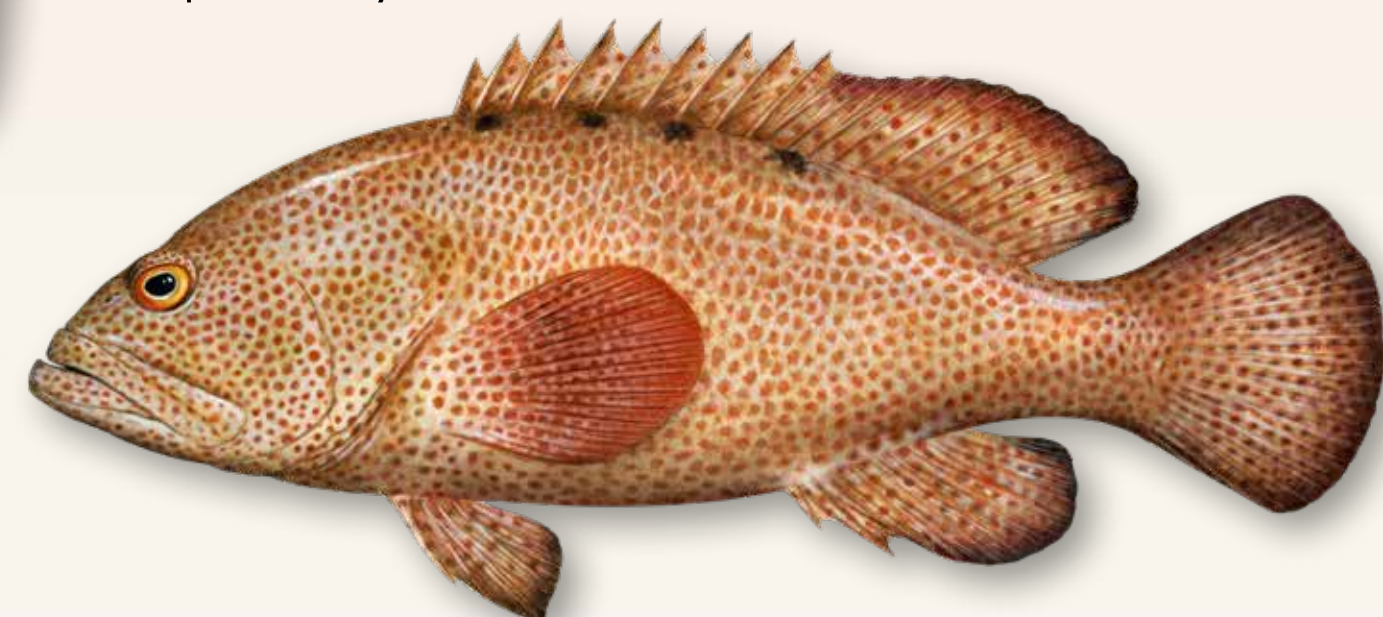
**Rock hind** (*Epinephelus adscensionis*)  
 Conservation Status: Least Concern  
 Size: 35–65 cm/13.8–25.6 in TL [max: 4.1 kg/9 lb]  
 Sexual Maturity: 25 cm/9.8 in TL  
 Lifespan: 12 years



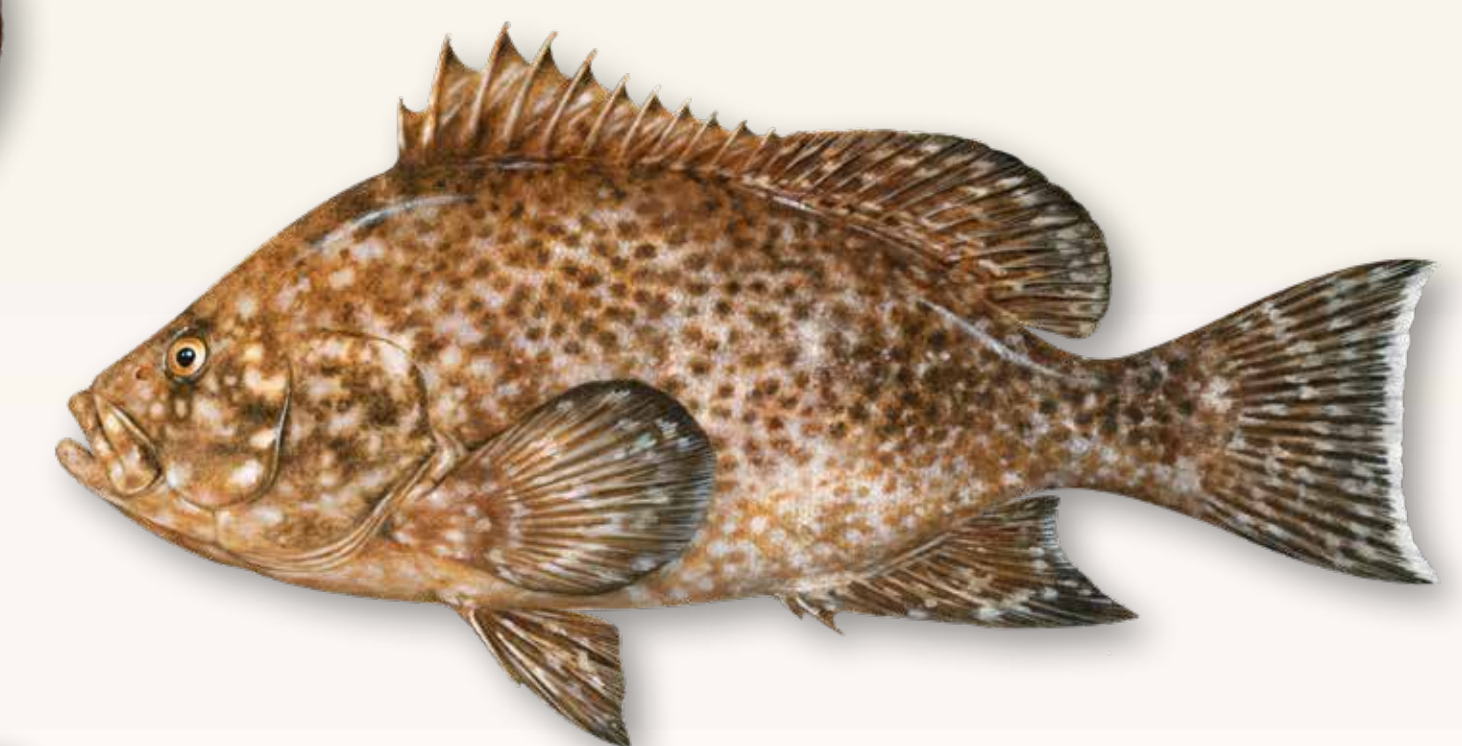
**Misty grouper** (*Hyporthodus mystacinus*)  
 Conservation Status: Least Concern  
 Size: 60–160 cm/23.6–62.3 in TL [max: 107 kg/236 lb]  
 Sexual Maturity: Unknown  
 Lifespan: 150 years



**Red hind** (*Epinephelus guttatus*)  
 Conservation Status: Least Concern  
 Size: 40–76 cm/15.7–29.9 in TL [max: 25 kg/55 lb]  
 Sexual Maturity: 25 cm/9.8 in TL  
 Lifespan: 22 years



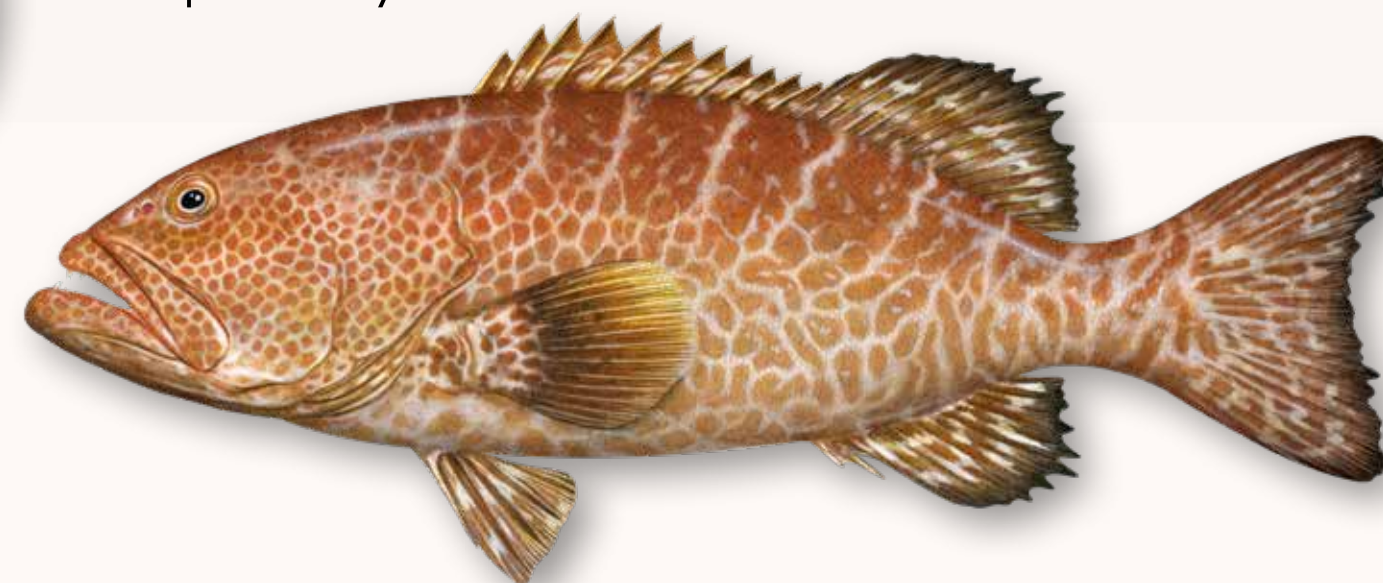
**Graysby** (*Cephalopholis cruentata*)  
 Conservation Status: Least Concern  
 Size: 20–42.6 cm/7.9–16.8 in TL [max: 1.1 kg/2.4 lb]  
 Sexual Maturity: 16 cm/6.3 in TL  
 Lifespan: 13 years



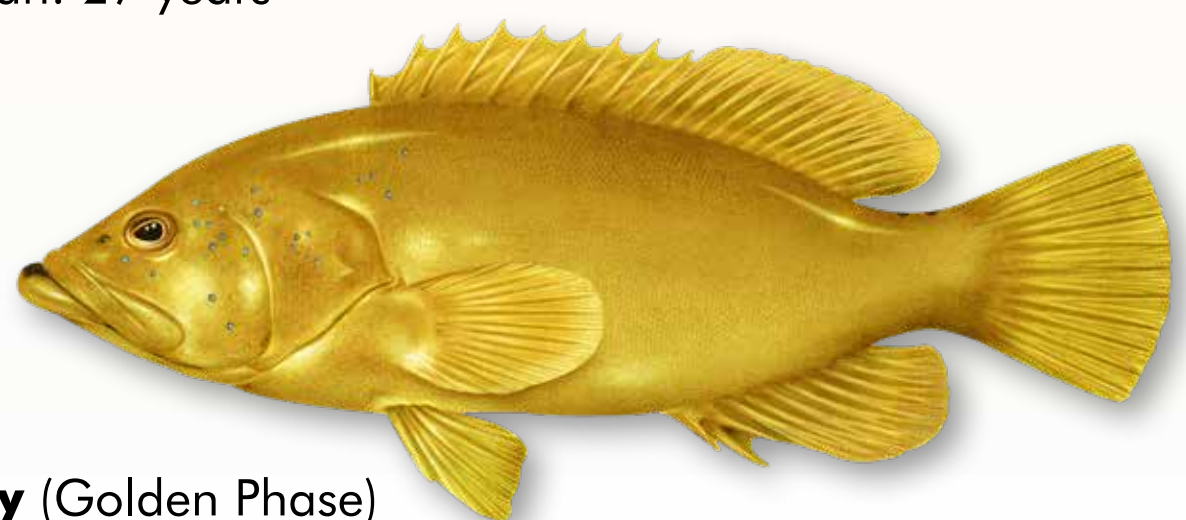
**Marbled grouper** (*Dermatolepis inermis*)  
 Conservation Status: Data Deficient  
 Size: 50–91 cm/19.7–35.8 in TL [max: 10 kg/22 lb]  
 Sexual Maturity: Unknown  
 Lifespan: Unknown



**Coney** (*Cephalopholis fulva*)  
 Conservation Status: Least Concern  
 Size: 24–44 cm/9.4–17.3 in TL [max: 1.7 kg/lb]  
 Sexual Maturity: 14.7 cm/5.8 in TL  
 Lifespan: 27 years



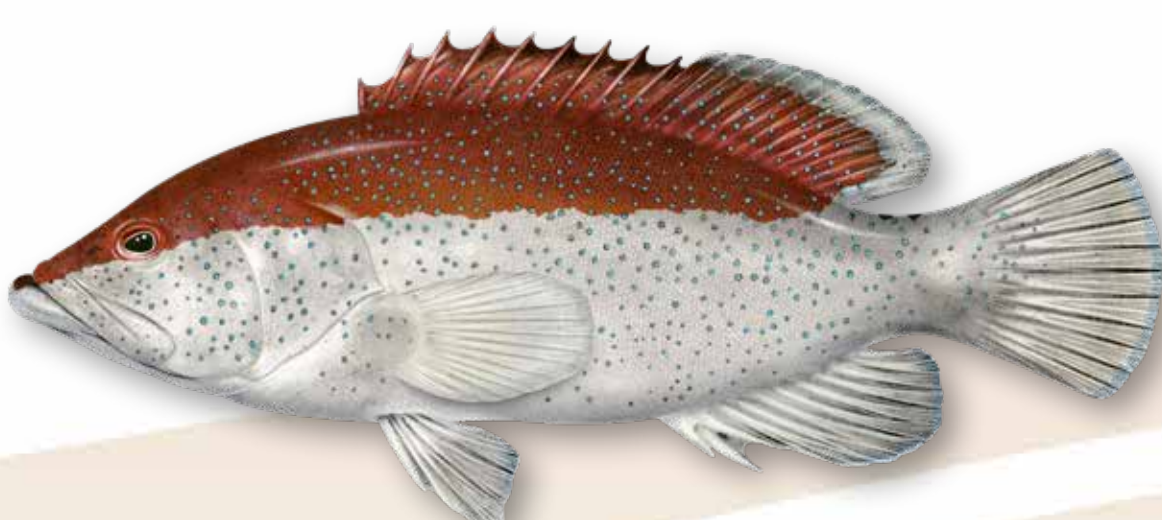
**Tiger grouper** (*Mycteroperca tigris*)  
 Conservation Status: Data Deficient  
 Size: 40–101 cm/15.7–39.8 in TL [max: 10 kg/22 lb]  
 Sexual Maturity: 46 cm/18 in TL  
 Lifespan: 26 years



**Coney** (Golden Phase)



**Scamp** (*Mycteroperca phenax*)  
 Conservation Status: Data Deficient  
 Size: 30–107 cm/11.8–42.1 in TL [max: 14.2 kg/31 lb]  
 Sexual Maturity: 33.2 cm/13.1 in TL  
 Lifespan: 21 years



**Coney** (Bicolor Phase)

