

## PRODUCT CATALOGUE



# TABLE OF CONTENTS

|   |              |
|---|--------------|
| <b>EXTERNAL WALL INSULATION SYSTEMS</b>                             | <b>3-15</b>  |
| SOLTHERM EWI SYSTEM   | 3            |
| KEY FEATURES OF SOLTHERM EWI SYSTEMS                                | 5            |
| PREMIUM RANGE OVERVIEW  | 7            |
| ULTIMATE RANGE OVERVIEW   | 8            |
| ENDURANCE RANGE OVERVIEW  | 10           |
| DECO RANGE OVERVIEW   | 12           |
| SOLTHERM CEILING THERM-GUARD  | 15           |
| <b>INTERIOR AND EXTERIOR PRODUCTS</b>                               | <b>16-30</b> |
| EWI ADHESIVES AND BASE COATS  | 18           |
| SETTING ACCELERATORS  | 21           |
| REINFORCING MESHES  | 21           |
| FOAMS   | 22           |
| RENDER SCRATCH COAT   | 22           |
| THIN-COAT RENDERS   | 23           |
| EXTERIOR WALL PAINTS  | 25           |
| ANTIMICROBIAL WALL AND ROOF COATINGS                                | 26           |
| PRIMERS   | 26           |
| PRIMERS AND SEALERS   | 27           |
| PRIMER & SURFACE STRENGTHENER                                       | 28           |
| BEDDING AND JOINT   | 30           |
| <b>DESIGN COLLECTION</b>  | <b>31-39</b> |
| DECORATIVE EFFECTS  | 32           |
| PRODUCTS  | 38           |
| <b>PRODUCTS FOR CERAMICS AND NATURAL STONE INSTALLATION</b>         | <b>40-44</b> |
| COMPARISON OF CERAMIC TILE ADHESIVES                                | 41           |
| ADHESIVES, GROUTS AND OTHER PRODUCTS FOR CERAMICS AND NATURAL STONE | 41           |
| <b>INTERIOR PAINTS</b>  | <b>45-49</b> |
| COMPARISON OF INTERIOR PAINTS                                       | 46           |
| INTERIOR PAINTS   | 47           |
| PRIMERS   | 49           |
| <b>PRODUCTS FOR TERRACES, LOGGIAS AND BALCONIES</b>                 | <b>50-55</b> |
| PRODUCTS FOR TERRACES, LOGGIAS AND BALCONIES                        | 51           |
| BALCONY PROFILES  | 54           |
| <b>BITUMEN WATERPROOFING</b>  | <b>56-57</b> |

# SOLTHERM EWI SYSTEM

**PREMIUM** - Economic, fast and lightweight



PREMIUM ACRYLIC



PREMIUM DASH



PREMIUM MINERAL



PREMIUM SILICONE



PDQ ACRYLIC/ PDQ SILICONE

**ULTIMATE** - Fire safe and reliable



ULTIMATE A1 DASH



ULTIMATE SILICONE



ULTIMATE A1 MINERAL



ULTIMATE HD A1 DASH



ULTIMATE HD SILICONE



ULTIMATE HD A1 MINERAL



ULTIMATE FSC SILICONE



ULTIMATE FSC DASH

**ENDURANCE** - Industry leading durability



ENDURANCE P SILICONE



ENDURANCE P HD SILICONE



ENDURANCE P+ SILICONE



ENDURANCE W SILICONE



ENDURANCE W HD SILICONE



ENDURANCE W+ SILICONE



ENDURANCE 75 SILICONE

# SOLTHERM EWI SYSTEM

## DECO COLLECTION



DECO P



DECO W



DECO P MOSAIC



DECO X MOSAIC



DECO W MOSAIC



DECO P MICA



DECO W MICA



DECO P WOOD



DECO W WOOD



DECO BRICK P



DECO BRICK W

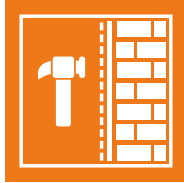


DECO P BRIQ

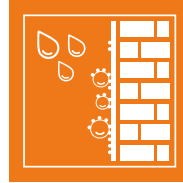


DECO W BRIQ

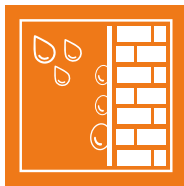
# Key features of SOLTHERM EWI Systems



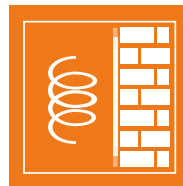
**IMPACT RESISTANCE**  
Increased resistance to damage.



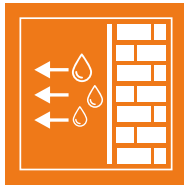
**SELF-CLEANING EFFECT**  
Keeps the facade dry and clean



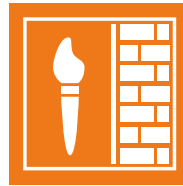
**REDUCED WATER ABSORPTION**  
Reduced water penetration through the coating.



**FLEXIBILITY**  
Resistance to cracks caused by large temperature spikes and weather conditions.  
\* system finished with silicone render



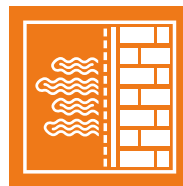
**WATER VAPOUR PERMEABILITY**  
Property which ensures that the moisture is wicked or driven away from the wall.



**COLOUR STABILITY**  
Resistance to UV radiation that leads to top coat ageing and degradation.



**WEATHER RESISTANCE**  
Weather tightness of the coating.



**RESISTANCE TO ORGANIC GROWTH**  
Increased resistance of the coating to algal and fungal growth.

# EXTERNAL WALL INSULATION



# PREMIUM RANGE OVERVIEW



## SOLTHERM SOLUTIONS PREMIUM ACRYLIC



BBA Certified  
NSAI Certified  
NHBC Accepted  
ETA Approved



B-s1 d0 to  
BS EN 13501-1



Cat II (single mesh)  
Cat I (double mesh)



>30 years  
effective life



1.5mm or 2mm  
Acrylic finish  
300 colour choices



| ADHESIVE    | BASECOAT    | REINFORCEMENT(S)  | PRIMER              | FINISH(ES)     | FINISH VARIATIONS |
|-------------|-------------|-------------------|---------------------|----------------|-------------------|
| SOLTHERM SA | SOLTHERM UB | SOLTHERM HD 158/S | SOLTHERM SNP COLOUR | SOLTHERM AF-P+ | 1.5 MM / 2.0 MM   |



## SOLTHERM SOLUTIONS PREMIUM DASH



BBA Certified  
NSAI Certified  
NHBC Accepted



B-s1 d0 to  
BS EN 13501-1



Cat II



>30 years  
effective life



6 standard  
dash receiver colours  
Various aggregate  
choices



| ADHESIVE    | BASECOAT    | REINFORCEMENT(S)  | PRIMER | FINISH(ES)   | FINISH VARIATIONS      |
|-------------|-------------|-------------------|--------|--------------|------------------------|
| SOLTHERM SA | SOLTHERM UB | SOLTHERM HD 158/S | N/A    | SOLTHERM SDR | 3-8M DASHING AGGREGATE |



## SOLTHERM SOLUTIONS PREMIUM MINERAL



BBA Certified  
NSAI Certified  
NHBC Accepted  
ETA Approved



B-s1 d0 to  
BS EN 13501-1



Cat II



>30 years  
effective life



2mm Mineral finish, white colour  
300+ colour choices



| ADHESIVE    | BASECOAT    | REINFORCEMENT(S)  | PRIMER             | FINISH(ES)   | FINISH VARIATIONS |
|-------------|-------------|-------------------|--------------------|--|-------------------|
| SOLTHERM SA | SOLTHERM UB | SOLTHERM HD 158/S | SOLTHERM AP COLOUR | SOLTHERM MTC (texture coat)<br>& SOLTHERM SNP (silicone primer)<br>& SOLTHERM STC-P (silicone paint) | 2.0 MM            |



## SOLTHERM SOLUTIONS PREMIUM SILICONE / HD SILICONE



BBA Certified  
NSAI Certified  
NHBC Accepted  
ETA Approved



B-s1 d0 to  
BS EN 13501-1



Cat I  
(single or double  
mesh)



>30 years  
effective life



1.5mm or 2mm  
Silicone finish  
300+ colour choices



| ADHESIVE    | BASECOAT    | REINFORCEMENT(S)  | PRIMER              | FINISH(ES)     | FINISH VARIATIONS |
|-------------|-------------|-------------------|---------------------|----------------|-------------------|
| SOLTHERM SA | SOLTHERM UB | SOLTHERM HD 158/S | SOLTHERM SNP COLOUR | SOLTHERM SFC-P | 1.5 MM / 2.0 MM   |

# PREMIUM RANGE OVERVIEW



## SOLTHERM SOLUTIONS PDQ ACRYLIC/ PDQ SILICONE

The PDQ system features a no-priming base coat allowing installation to be completed in as little as 3 days.



BBA Certified  
NSAI Certified  
NHBC Accepted  
ETA Approved



B-s2 d0 to  
BS EN 13501-1



Cat II



>30 years  
effective life



Acrylic or Silicone  
render finishes  
1.5mm or 2mm grins  
300 colour choices



| ADHESIVE    | BASECOAT            | REINFORCEMENT(S)  | PRIMER | FINISH(ES)                       | FINISH VARIATIONS |
|-------------|---------------------|-------------------|--------|----------------------------------|-------------------|
| SOLTHERM SA | SOLTHERM BC-P Quick | SOLTHERM HD 158/S | N/A    | SOLTHERM AF-P+<br>SOLTHERM SFC-P | 1.5 MM / 2.0 MM   |

# ULTIMATE RANGE OVERVIEW



## SOLTHERM SOLUTIONS ULTIMATE A1 DASH



BBA Certified  
NSAI Certified  
NHBC Accepted



A1 to BS EN 13501-1



Cat II



>30 years  
effective life



6 standard  
dash receiver colours  
Various aggregate  
choices



| ADHESIVE    | BASECOAT    | REINFORCEMENT(S)  | PRIMER | FINISH(ES)   | FINISH VARIATIONS       |
|-------------|-------------|-------------------|--------|--------------|-------------------------|
| SOLTHERM MA | SOLTHERM MB | SOLTHERM HD 158/S | N/A    | SOLTHERM SDR | 3-8MM DASHING AGGREGATE |



## SOLTHERM SOLUTIONS ULTIMATE SILICONE



BBA Certified  
NSAI Certified  
NHBC Accepted  
ETA Approved



A2-s1 d0 to  
BS EN 13501-1



Cat II



>30 years  
effective life



1.5mm  
or 2mm  
Silicone render  
300+ colour choices



| ADHESIVE    | BASECOAT    | REINFORCEMENT(S)  | PRIMER              | FINISH(ES)     | FINISH VARIATIONS |
|-------------|-------------|-------------------|---------------------|----------------|-------------------|
| SOLTHERM MA | SOLTHERM MB | SOLTHERM HD 158/S | SOLTHERM SNP COLOUR | SOLTHERM SFC-P | 1.5 MM / 2.0 MM   |



## SOLTHERM SOLUTIONS ULTIMATE A1 MINERAL

The Ultimate A1 Mineral system is the only BBA certified A1 Fire rated EWI system available in the world.



BBA Certified  
NSAI Certified  
NHBC Accepted  
ETA Approved



A1 to  
BS EN 13501-1



Cat II



>30 years  
effective life



2mm Mineral render  
white colour  
300+ colour choices  
for paint



| ADHESIVE    | BASECOAT    | REINFORCEMENT(S)  | PRIMER             | FINISH(ES)   | FINISH VARIATIONS |
|-------------|-------------|-------------------|--------------------|--|-------------------|
| SOLTHERM MA | SOLTHERM MB | SOLTHERM HD 158/S | SOLTHERM AP COLOUR | SOLTHERM MTC (texture coat)<br>& SOLTHERM SNP (silicone primer)<br>& SOLTHERM STC-P (silicone paint) | 2.0 MM            |



# ULTIMATE RANGE OVERVIEW



## SOLTHERM SOLUTIONS ULTIMATE HD A1 DASH



BBA Certified  
NSAI Certified  
NHBC Accepted



A1 to BS EN 13501-1



Cat II



>30 years  
effective life



6 standard dash receiver  
colours  
Various aggregate choices



| ADHESIVE    | BASECOAT    | REINFORCEMENT(S)       | PRIMER | FINISH(ES)   | FINISH VARIATIONS          |
|-------------|-------------|------------------------|--------|--------------|----------------------------|
| SOLTHERM MA | SOLTHERM MB | SOLTHERM HD 158/S (2x) | N/A    | SOLTHERM SRD | 3-8MM<br>DASHING AGGREGATE |



## SOLTHERM SOLUTIONS ULTIMATE HD SILICONE



BBA Certified  
NSAI Certified  
NHBC Accepted  
ETA Approved



A2 - s1 d0 to  
BS EN 13501-1



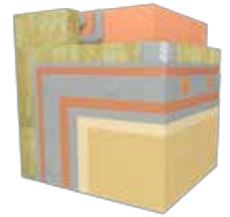
Cat II



>30 years  
effective life



1.5mm or 2mm Silicone render  
300+ colour choices



| ADHESIVE    | BASECOAT    | REINFORCEMENT(S)       | PRIMER              | FINISH(ES)     | FINISH VARIATIONS |
|-------------|-------------|------------------------|---------------------|----------------|-------------------|
| SOLTHERM MA | SOLTHERM MB | SOLTHERM HD 158/S (2x) | SOLTHERM SNP COLOUR | SOLTHERM SFC-P | 1.5 MM / 2.0 MM   |



## SOLTHERM SOLUTIONS ULTIMATE HD A1 MINERAL



BBA Certified  
NSAI Certified  
NHBC Accepted  
ETA Approved



A2 - s1 d0  
to BS EN 13501-1



Cat II



>30 years  
effective life



2 mm Mineral render white colour  
300+ colour choices for paint



| ADHESIVE    | BASECOAT    | REINFORCEMENT(S)       | PRIMER             | FINISH(ES)   | FINISH VARIATIONS |
|-------------|-------------|------------------------|--------------------|--|-------------------|
| SOLTHERM MA | SOLTHERM MB | SOLTHERM HD 158/S (2x) | SOLTHERM AP COLOUR | SOLTHERM MTC (texture coat)<br>& SOLTHERM SNP (silicone primer)<br>& SOLTHERM STC-P (silicone paint) | 2.0 MM            |



## SOLTHERM SOLUTIONS ULTIMATE FSC SILICONE

The Ultimate FSC system features a patented composite Grey EPS insulation board demonstrating exceptional fire performance vs. conventional EPS systems.



BBA Approved  
& NHBC Accepted  
ECOS Innovation  
Score Uplift



B - s1 d0 to  
BS EN 13501-1



Cat II



>30 years  
effective life



1.5mm Silicone render  
300+ colour choices



| ADHESIVE    | BASECOAT    | REINFORCEMENT(S)  | PRIMER              | FINISH(ES)     | FINISH VARIATIONS |
|-------------|-------------|-------------------|---------------------|----------------|-------------------|
| SOLTHERM SA | SOLTHERM UB | SOLTHERM HD 158/S | SOLTHERM SNP COLOUR | SOLTHERM SFC-P | 1.5 MM            |

# ULTIMATE RANGE OVERVIEW



## SOLTHERM SOLUTIONS ULTIMATE FSC DASH

The Ultimate FSC system features a patented composite Grey EPS insulation board demonstrating exceptional fire performance vs. conventional EPS systems.



BBA Approved & NHBC Accepted ECO3 Innovation Score Uplift



B-s1 d0 to BS EN 13501-1



Cat II



>30 years effective life



6 standard dash receiver colours  
Various aggregate choices



| ADHESIVE    | BASECOAT    | REINFORCEMENT(S)  | PRIMER | FINISH(ES)   | FINISH VARIATIONS       |
|-------------|-------------|-------------------|--------|--------------|-------------------------|
| SOLTHERM SA | SOLTHERM UB | SOLTHERM HD 158/S | N/A    | SOLTHERM SDR | 3-8MM DASHING AGGREGATE |

# ENDURANCE RANGE OVERVIEW



## SOLTHERM SOLUTIONS ENDURANCE P SILICONE



ETA Approved



B-s2 d0 to BS EN 13501-1



Cat I  
15 Joules



>25 years effective life



1.5mm or 2mm grains  
300+ colour choices



| ADHESIVE    | BASECOAT      | REINFORCEMENT(S)  | PRIMER | FINISH(ES)     | FINISH VARIATIONS |
|-------------|---------------|-------------------|--------|----------------|-------------------|
| SOLTHERM SA | SOLTHERM DA-P | SOLTHERM HD 158/S | N/A    | SOLTHERM SFC-P | 1.5 MM / 2.0 MM   |



## SOLTHERM SOLUTIONS ENDURANCE P HD SILICONE

Endurance P HD Silicone features a cement-free base coat with double reinforcing mesh which subsequently improves impact resistance vs. conventional (single mesh) EPS systems. No primer needed, tinted basecoat.



ETA Approved



B-s2 d0 to BS EN 13501-1



Cat I  
44 Joules



>25 years effective life



1.5mm or 2mm grains  
300+ colour choices



| ADHESIVE    | BASECOAT      | REINFORCEMENT(S)       | PRIMER | FINISH(ES)     | FINISH VARIATIONS |
|-------------|---------------|------------------------|--------|----------------|-------------------|
| SOLTHERM SA | SOLTHERM DA-P | SOLTHERM HD 158/S (2x) | N/A    | SOLTHERM SFC-P | 1.5 MM / 2.0 MM   |



## SOLTHERM SOLUTIONS ENDURANCE P+ SILICONE

Endurance P+ Silicone features a cement-free base coat with reinforced and standard mesh resulting in the highest impact resistance available in our EPS system offers. No primer needed, tinted basecoat.



ETA Approved



B-s2 d0 to BS EN 13501-1



Cat I  
138 Joules



>25 years effective life



1.5mm or 2mm grains  
300+ colour choices



| ADHESIVE    | BASECOAT      | REINFORCEMENT(S)                      | PRIMER | FINISH(ES)     | FINISH VARIATIONS |
|-------------|---------------|---------------------------------------|--------|----------------|-------------------|
| SOLTHERM SA | SOLTHERM DA-P | SOLTHERM HD 335/P & SOLTHERM HD 158/S | N/A    | SOLTHERM SFC-P | 1.5 MM / 2.0 MM   |

# ENDURANCE RANGE OVERVIEW



## SOLTHERM SOLUTIONS ENDURANCE W SILICONE



ETA Approved  
BBA Accepted



A2-s1 d0 to  
BS EN 13501-1



Cat I  
36 Joules



>25 years  
effective life



1.5mm or 2mm  
grains  
300+ colour choices



| ADHESIVE    | BASECOAT                   | REINFORCEMENT(S)  | PRIMER | FINISH(ES)     | FINISH VARIATIONS |
|-------------|----------------------------|-------------------|--------|----------------|-------------------|
| SOLTHERM MA | SOLTHERM BC-P Quick & Flex | SOLTHERM HD 158/S | N/A    | SOLTHERM SFC-P | 1.5 MM / 2.0 MM   |



## SOLTHERM SOLUTIONS ENDURANCE W HD SILICONE

Endurance W HD Silicone features a white-cement base coat with double reinforcing mesh resulting in improved impact resistance vs. conventional MW (single mesh) systems.



ETA Approved  
BBA Accepted



A2-s1 d0 to  
BS EN 13501-1



Cat I  
41 Joules



>25 years  
effective life



1.5mm or 2mm  
grains  
300+ colour choices



| ADHESIVE    | BASECOAT                   | REINFORCEMENT(S)       | PRIMER | FINISH(ES)     | FINISH VARIATIONS |
|-------------|----------------------------|------------------------|--------|----------------|-------------------|
| SOLTHERM MA | SOLTHERM BC-P Quick & Flex | SOLTHERM HD 158/S (2x) | N/A    | SOLTHERM SFC-P | 1.5 MM / 2.0 MM   |



## SOLTHERM SOLUTIONS ENDURANCE W+ SILICONE

Endurance W+ Silicone features a white-cement base coat with reinforced and standard mesh layers resulting in the highest impact resistance available in our MW system offers.



ETA Approved  
BBA Accepted



A2-s1 d0 to  
BS EN 13501-1



Cat I  
79 joules



>25 years  
effective life



1.5mm grains  
300+ colour choices



| ADHESIVE    | BASECOAT                   | REINFORCEMENT(S)                       | PRIMER | FINISH(ES)     | FINISH VARIATIONS |
|-------------|----------------------------|--|--------|----------------|-------------------|
| SOLTHERM MA | SOLTHERM BC-P Quick & Flex | SOLTHERM HD 335/P<br>SOLTHERM HD 158/S | N/A    | SOLTHERM SFC-P | 1.5 MM            |



## SOLTHERM SOLUTIONS ENDURANCE 75 SILICONE SYSTEM



ETA Approved  
ECO3 Innovation  
Score Uplift



A2-s1 d0 to  
BS EN 13501-1



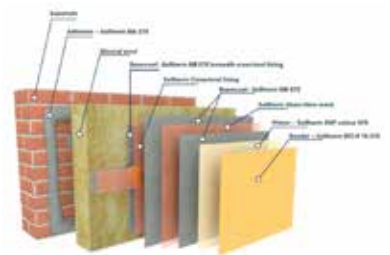
Cat II



>75 years effective life  
(Industry leading accelerated age testing)  
(Statistical Regression Analysis) <sup>1</sup>



1.5mm grains  
300+ colour choices



| ADHESIVE        | BASECOAT        | REINFORCEMENT(S)  | PRIMER                  | FINISH(ES)           | FINISH VARIATIONS |
|-----------------|-----------------|-------------------|-------------------------|----------------------|-------------------|
| SOLTHERM MA S75 | SOLTHERM MB S75 | SOLTHERM HD 158/S | SOLTHERM SNP COLOUR S75 | SOLTHERM SFC-P15 S75 | 1.5 MM            |

# DECO RANGE OVERVIEW



## SOLTHERM SOLUTIONS DECO P



ETA Approved



B-s2, d0 to BS EN 13501-1



Cat II



>25 years effective life



Deco colour palette Stone or granite textures imitation



| ADHESIVE    | BASECOAT    | REINFORCEMENT(S)  | PRIMER             | FINISH(ES)    | FINISH VARIATIONS                            |
|-------------|-------------|-------------------|--------------------|---------------|--|
| SOLTHERM SA | SOLTHERM UB | SOLTHERM HD 158/S | SOLTHERM AP COLOUR | SOLTHERM DECO | 0.5-1.0MM GRAIN SIZE<br>0.5-2.0MM GRAIN SIZE |



## SOLTHERM SOLUTIONS DECO W



ETA Approved



A2-s1, d0 to BS EN 13501-1



Cat I



>25 years effective life



Deco colour palette Stone or granite textures imitation



| ADHESIVE    | BASECOAT            | REINFORCEMENT(S)  | PRIMER             | FINISH(ES)    | FINISH VARIATIONS                            |
|-------------|---------------------|-------------------|--------------------|---------------|--|
| SOLTHERM MA | SOLTHERM UB SPECIAL | SOLTHERM HD 158/S | SOLTHERM AP COLOUR | SOLTHERM DECO | 0.5-1.0MM GRAIN SIZE<br>0.5-2.0MM GRAIN SIZE |



## SOLTHERM SOLUTIONS DECO P MOSAIC



BBA Approved  
ETA Approved



B-s1, d0 to BS EN 13501-1



Cat II (single mesh)  
Cat I (double mesh)



>30 years effective life



Deco Mosaic colour palette 300 colours



| ADHESIVE    | BASECOAT    | REINFORCEMENT(S)  | PRIMER             | FINISH(ES)   | FINISH VARIATIONS                                    |
|-------------|-------------|-------------------|--------------------|--------------|--|
| SOLTHERM SA | SOLTHERM UB | SOLTHERM HD 158/S | SOLTHERM AP COLOUR | SOLTHERM AMC | APPROX. 1.0MM GRAIN SIZE<br>APPROX. 1.5MM GRAIN SIZE |



## SOLTHERM SOLUTIONS DECO X MOSAIC



ETA Approved



C-s1, d0 to BS EN 13501-1



Cat I



>25 years effective life



Deco Mosaic colour palette 300 colours



| ADHESIVE    | BASECOAT    | REINFORCEMENT(S)  | PRIMER             | FINISH(ES)   | FINISH VARIATIONS                                    |
|-------------|-------------|-------------------|--------------------|--------------|--|
| SOLTHERM SA | SOLTHERM UB | SOLTHERM HD 158/S | SOLTHERM AP COLOUR | SOLTHERM AMC | APPROX. 1.0MM GRAIN SIZE<br>APPROX. 1.5MM GRAIN SIZE |

# DECO RANGE OVERVIEW



## SOLTHERM SOLUTIONS DECO W MOSAIC



ETA Approved



A2-s1, d0 to BS EN 13501-1



Cat I



>25 years effective life



Deco Mosaic colour palette 300 colours



| ADHESIVE    | BASECOAT            | REINFORCEMENT(S)  | PRIMER             | FINISH(ES)   | FINISH VARIATIONS                                   |
|-------------|---------------------|-------------------|--------------------|--------------|---|
| SOLTHERM MA | SOLTHERM UB SPECIAL | SOLTHERM HD 158/S | SOLTHERM AP COLOUR | SOLTHERM AMC | APPROX. 1.0MM GRAIN SIZE<br>APPROX 1.5MM GRAIN SIZE |



## SOLTHERM SOLUTIONS DECO P MICA



ETA Approved



B-s2 d0 to BS EN 13501-1



Cat II



>25 years effective life



Deco Mica colour palette 35 colours



| ADHESIVE    | BASECOAT    | REINFORCEMENT(S)  | PRIMER             | FINISH(ES)        | FINISH VARIATIONS |
|-------------|-------------|-------------------|--------------------|-------------------|-------------------|
| SOLTHERM SA | SOLTHERM UB | SOLTHERM HD 158/S | SOLTHERM AP COLOUR | SOLTHERM AMC DECO | N/A               |



## SOLTHERM SOLUTIONS DECO W MICA



ETA Approved



A2-s1, d0 to BS EN 13501-1



Cat II



>25 years effective life



Deco Mica colour palette 35 colours



| ADHESIVE    | BASECOAT            | REINFORCEMENT(S)  | PRIMER             | FINISH(ES)        | FINISH VARIATIONS |
|-------------|---------------------|-------------------|--------------------|-------------------|-------------------|
| SOLTHERM MA | SOLTHERM UB SPECIAL | SOLTHERM HD 158/S | SOLTHERM AP COLOUR | SOLTHERM AMC DECO | N/A               |



## SOLTHERM SOLUTIONS DECO P WOOD



ETA Approved



B-s2, d0 to BS EN 13501-1



Cat III



>25 years effective life



Wood effect texture 10 colours



| ADHESIVE    | BASECOAT    | REINFORCEMENT(S)  | PRIMER          | FINISH(ES)  | FINISH VARIATIONS                |
|-------------|-------------|-------------------|-----------------|-------------|----------------------------------|
| SOLTHERM SA | SOLTHERM UB | SOLTHERM HD 158/S | SOLTHERM T (2x) | SOLTHERM WS | SOLTHERM DECO LAZUR (10 COLOURS) |

# DECO RANGE OVERVIEW



## SOLTHERM SOLUTIONS DECO W WOOD



ETA Approved



A2-s1, d0 to BS EN 13501-1



Cat II



>25 years effective life



Wood effect texture 10 colours



| ADHESIVE    | BASECOAT            | REINFORCEMENT(S)       | PRIMER          | FINISH(ES)  | FINISH VARIATIONS                |
|-------------|---------------------|------------------------|-----------------|-------------|----------------------------------|
| SOLTHERM MA | SOLTHERM UB SPECIAL | SOLTHERM HD 158/S (2x) | SOLTHERM T (2x) | SOLTHERM WS | SOLTHERM DECO LAZUR (10 COLOURS) |



## SOLTHERM SOLUTIONS DECO BRICK P



ETA Approved



B-s2, d0 to BS EN 13501-1



Cat I



>25 years effective life



Brick effect texture 9 colours



| ADHESIVE    | BASECOAT    | REINFORCEMENT(S)  | PRIMER | FINISH(ES)                                   | FINISH VARIATIONS |
|-------------|-------------|-------------------|--------|--|-------------------|
| SOLTHERM SA | SOLTHERM UB | SOLTHERM HD 158/S | N/A    | SOLTHERM TBR + SOLTHERM BFC (Brick Top Coat) | N/A               |



## SOLTHERM SOLUTIONS DECO BRICK W



ETA Approved



A2-s1, d0 to BS EN 13501-1



Cat I



>25 years effective life



Brick effect texture 9 colours



| ADHESIVE    | BASECOAT            | REINFORCEMENT(S)  | PRIMER | FINISH(ES)                                   | FINISH VARIATIONS |
|-------------|---------------------|-------------------|--------|--|-------------------|
| SOLTHERM SA | SOLTHERM UB SPECIAL | SOLTHERM HD 158/S | N/A    | SOLTHERM TBR + SOLTHERM BFC (Brick Top Coat) | N/A               |



## SOLTHERM SOLUTIONS DECO P BRIQ



ETA Approved



B-s1 d0 to BS EN 13501-1



Cat II (Natural Stone)  
Cat III (Ceramic Brick Slips)



>25 years effective life



6.5mm to 20mm Ceramic Brick Slips  
10mm to 20mm Natural Stone Tiles



| ADHESIVE    | BASECOAT    | REINFORCEMENT(S)      | BRICK SLIP ADHESIVE       | FINISH(ES)    | POINTING MORTAR                  | FINISH VARIATIONS   |
|-------------|-------------|-----------------------|---------------------------|---------------|----------------------------------|---|
| SOLTHERM SA | SOLTHERM UB | SOLTHERM HD 158/S(2x) | SOLTHERM E<br>SOLTHERM SE | SOLTHERM BRIQ | SOLTHERM AQUASTOP<br>SOLTHERM KL | 6.5MM TO 20MM CERAMIC BRICK SLIPS<br>10MM TO 20MM NATURAL STONE TILES |

# DECO RANGE OVERVIEW



## SOLTHERM SOLUTIONS DECO W BRIQ



ETA Approved



A2-s1 d0 to  
BS EN 13501-1



Cat II (Natural Stone)  
Cat III (Ceramic Brick  
Slips)



>25 years  
effective life



6.5mm to 20mm Ceramic  
Brick Slips  
10mm to 20mm Natural  
Stone Tiles



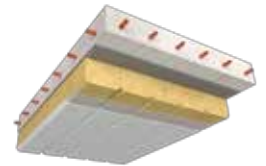
| ADHESIVE    | BASECOAT    | REINFORCEMENT(S)      | BRICK SLIP ADHESIVE       | FINISH(ES)    | POINTING MORTAR                  | FINISH VARIATIONS   |
|-------------|-------------|-----------------------|---------------------------|---------------|----------------------------------|---|
| SOLTHERM MA | SOLTHERM MB | SOLTHERM HD 158/S(2x) | SOLTHERM E<br>SOLTHERM SE | SOLTHERM BRIQ | SOLTHERM AQUASTOP<br>SOLTHERM KL | 6.5MM TO 20MM<br>CERAMIC BRICK SLIPS<br>10MM TO 20MM<br>NATURAL STONE TILES |

# SOLTHERM CEILING THERM-GUARD



## SOLTHERM CEILING THERM-GUARD

SOLTHERM CEILING THERM-GUARD is a complete ceiling insulation system of the underside of floors (ceilings) over spaces like garages, basements, etc. It offers excellent thermal and acoustic performance, what makes it the best solution to provide thermal insulation and protection to large-area ceilings. The system has been classified as fire retardant, non-combustible and not producing flaming droplets/particles.



## WITH SOLTHERM CEILING THERM-GUARD YOU GAIN

SIMPLIFIED INSULATION  
INSTALLATION AND REDUCED  
CYCLE TIME

TOP COAT APPLICATION BY  
SPRAYING

SOLUTION CONFIRMED  
BY POLISH TECHNICAL  
APPROVAL

| COMPONENTS      | PRODUCT NAME        | [UoM/m <sup>2</sup> ] | AVERAGE MATERIAL<br>CONSUMPTION PER<br>[UoM/m <sup>2</sup> ] | COVERAGE RANGE<br>[UoM/m <sup>2</sup> ] |
|-----------------|---------------------|-----------------------|--|---|
| 1. ADHESIVE     | <b>SOLTHERM MA</b>  | kg                    | 4.25   | 3.5 ÷ 5                                 |
| 2. ADHESIVE     | <b>SOLTHERM MB</b>  | kg                    | 4.25   | 3.5 ÷ 5                                 |
| 3. PAINT PRIMER | <b>SOLTHERM TTP</b> | kg                    | 0.25   | ≥0.25                                   |
| 4. PAINT        | <b>SOLTHERM TTC</b> | kg                    | 0.8  | ≥0.8                                    |

| COMPONENTS                | PRODUCT NAME              | [UoM/m <sup>2</sup> ] | AVERAGE MATERIAL<br>CONSUMPTION PER<br>[UoM/m <sup>2</sup> ] | COVERAGE RANGE<br>[UoM/m <sup>2</sup> ] |
|---------------------------|---------------------------|-----------------------|--|---|
| 1. ADHESIVE               | <b>SOLTHERM MA</b>        | kg                    | 4.25   | 3.5 ÷ 5                                 |
| 2. ADHESIVE               | <b>SOLTHERM MB</b>        | kg                    | 4.25   | 3.5 ÷ 5                                 |
| 3. PRIMER                 | <b>SOLTHERM TTP</b>       | kg                    | 0.25   | ≥0.25                                   |
| 4. THIN-COAT RENDER       | <b>SOLTHERM MTC 15 MA</b> | kg                    | 3.5  | ≥ 3.5                                   |
| 5A. SILICATE PAINT PRIMER | <b>SOLTHERM STP</b>       | kg                    | 0.2  | ≥ 0.2                                   |
| 5B. SILICONE PAINT PRIMER | <b>SOLTHERM SNP</b>       | kg                    | 0.2  | ≥ 0.2                                   |
| 6A. SILICATE PAINT        | <b>SOLTHERM STPT</b>      | l                     | 0.28   | ≥ 0.28                                  |
| 6B. SILICONE PAINT        | <b>SOLTHERM STC-P</b>     | l                     | 0.28   | ≥ 0.28                                  |



# INTERIOR AND EXTERIOR PRODUCTS





## COMMERCIAL INFORMATION

| PRODUCT DESIGNATION           | MEASURE | UNIT  | NUMBER OF<br>PIECES PER<br>PALLET | TOTAL WEIGHT |
|-------------------------------|---------|-------|-----------------------------------|--------------|
| RENDERS                       | 25      | kg    | 24                                | 600          |
| PRIMERS & SEALERS             | 25      | kg    | 24                                | 600          |
| FINISH GLAZINGS /<br>COATINGS | 5       | kg, l | 108                               | 540          |
|                               | 1       | kg, l | 360                               | 360          |
| PAINTS                        | 18      | l     | 24                                | 432          |
| BITUMINOUS<br>PRODUCTS        | 32      | kg    | 12                                | 384          |
|                               | 32      | l     | 12                                | 384          |
|                               | 30      | l     | 12                                | 360          |
|                               | 25      | l     | 18                                | 450          |
| RENDERS, PLASTERS             | 25      | kg    | 48                                | 1200         |
| SKIM COATS                    | 20      | kg    | 48                                | 960          |
|                               | 19      | kg    | 33                                | 627          |
| WATERPROOFING                 | 25+8.3  | kg    | 24+24                             | 799.20       |
|                               | 14      | kg    | 44                                | 616          |
|                               | 7       | kg    | 80                                | 560          |
|                               | 4       | kg    | 88                                | 352          |
| JOINTS                        | 2       | kg    | 312                               | 624          |
|                               | 5       | kg    | 120                               | 600          |
|                               | 20      | kg    | 48                                | 960          |



## SOLTHERM SA CEMENTITIOUS ADHESIVE FOR EPS & XPS



- Offers excellent adhesion to mineral surface and polystyrene.
- Suitable for thermal insulation of passive houses and energy efficient buildings with EPS board thickness up to 50 cm.

- Formulated for bonding EPS insulation boards.

| Product name       | Coverage per 1m <sup>2</sup><br>[kg/m <sup>2</sup> ] * | Unit of Measure<br>[kg] |
|--------------------|--|-------------------------|
| <b>SOLTHERM SA</b> | ≥ 4.0  | 25                      |

## SOLTHERM UB CEMENTITIOUS BASECOAT FOR EPS & XPS



- Formulated for embedding mesh and bonding of insulation boards.
- Offers excellent adhesion to mineral surface and polystyrene.

- Suitable for thermal insulation of passive houses and energy efficient buildings with EPS board thickness up to 50 cm.

| Product name       | Coverage per 1m <sup>2</sup><br>[kg/m <sup>2</sup> ] *               | Unit of Measure<br>[kg] |
|--------------------|--|-------------------------|
| <b>SOLTHERM UB</b> | Polystyrene board bonding<br>≥ 4.0<br>Base coat application<br>≥ 4.0 | 25                      |

## SOLTHERM UB-P UNIVERSAL BASE COAT WITH MICROFIBRES FOR EPS



- Formulated for embedding mesh and bonding of insulation boards.
- Increased resistance to cracking and crazing.
- Offers excellent adhesion to mineral surface and polystyrene.

- Water vapour permeable.
- Suitable for thermal insulation of passive houses and energy efficient buildings with EPS board thickness up to 50 cm.

| Product name         | Coverage per 1m <sup>2</sup><br>[kg/m <sup>2</sup> ] *               | Unit of Measure<br>[kg] |
|----------------------|--|-------------------------|
| <b>SOLTHERM UB-P</b> | Polystyrene board bonding<br>≥ 4.0<br>Base coat application<br>≥ 4.0 | 25                      |

## SOLTHERM WB WINTER CEMENTITIOUS BASECOAT FOR EPS



- Offers excellent adhesion to mineral surface and polystyrene.
- Water vapour permeable.

- Application at ambient and surface temperatures from 0°C.

| Product name       | Coverage per 1m <sup>2</sup><br>[kg/m <sup>2</sup> ] *               | Unit of Measure<br>[kg] |
|--------------------|--|-------------------------|
| <b>SOLTHERM WB</b> | Polystyrene board bonding<br>≥ 4.0<br>Base coat application<br>≥ 4.0 | 25                      |

## SOLTHERM MA CEMENTITIOUS ADHESIVE FOR MW & LAMELLA



• Offers good adhesion to mineral surface and mineral wool.

| Product name       | Coverage per 1m <sup>2</sup><br>[kg/m <sup>2</sup> ] *                           | Unit of Measure<br>[kg] |
|--------------------|--|-------------------------|
| <b>SOLTHERM MA</b> | Ribbon and dab method<br>≥ 4.0<br>Notched trowel or full surface method<br>≥ 5.0 | 25                      |

## SOLTHERM MB CEMENTITIOUS BASECOAT FOR MW & LAMELLA



• Offers good adhesion to mineral surface and mineral wool.

| Product name       | Coverage per 1m <sup>2</sup><br>[kg/m <sup>2</sup> ] *   | Unit of Measure<br>[kg] |
|--------------------|--|-------------------------|
| <b>SOLTHERM MB</b> | Ribbon and dab method<br>≥ 4.0<br>Notched trowel or full surface method<br>≥ 5.0<br>Base coat application<br>≥ 4.5 | 25                      |

## SOLTHERM UB SPECIAL CEMENTITIOUS BASECOAT FOR EPS & MW & XPS



• Excellent adhesion to mineral surfaces and insulation boards.  
• Formulated for embedding mesh and bonding of insulation boards.

• Water vapour permeable.

| Product name               | Coverage per 1m <sup>2</sup><br>[kg/m <sup>2</sup> ] *  | Unit of Measure<br>[kg] |
|----------------------------|---|-------------------------|
| <b>SOLTHERM UB SPECIAL</b> | Ribbon and dab method ≥ 4.0<br>Notched trowel or full surface method<br>≥ 4.0 (EPS, XPS), ≥ 5.0 (MW)<br>Base coat application<br>≥ 4.0 (EPS, XPS), ≥ 4.5 (MW) | 25                      |

## SOLTHERM DA-P FIBRE REINFORCED BASECOAT FOR EPS



• Increased resistance to cracking and crazing.  
• Offers extreme impact resistance (within the solution SOLTHERM P ENDURANCE RANGE) and high flexibility.  
• Highly water-repellent.

• Offers good adhesion to mineral surface and EPS.  
• No priming necessary prior to render application.  
• Suitable for EPS boards.

| Product name         | Coverage per 1m <sup>2</sup><br>[kg/m <sup>2</sup> ] *  | Unit of Measure<br>[kg] |
|----------------------|---|-------------------------|
| <b>SOLTHERM DA-P</b> | ≥ 3.0<br>(single mesh)<br>> 5.0<br>(double reinforcement including a combination of standard and armour mesh)<br>0.9 ÷ 1.4<br>(slurry coat) | 25                      |

## SOLTHERM BC-P WINTER FIBRE-REINFORCED WHITE CEMENT BASE COAT FOR EPS



- Increased resistance to cracking and crazing.
- Offers excellent adhesion to mineral surface and polystyrene.
- Water vapour permeable.

- Application at ambient and surface temperatures from 3°C.
- Component of SOLTHERM thermal insulation systems
- Formulated for embedding mesh and bonding of insulation boards.

| Product name         | Coverage per 1m <sup>2</sup><br>[kg/m <sup>2</sup> ] *               | Unit of Measure<br>[kg] |
|----------------------|--|-------------------------|
| <b>SOLTHERM BC-P</b> | Polystyrene board bonding<br>≥ 4.0<br>Base coat application<br>≥ 4.0 | 25                      |

## SOLTHERM BC-P QUICK FIBRE REINFORCED BASECOAT FOR EPS & MW



- Increased resistance to cracking and crazing.
- Offers excellent adhesion to mineral surface, EPS and mineral wool.
- Water vapour permeable.

- Application at ambient and surface temperatures from 3°C.
- Component of SOLTHERM thermal insulation systems based on EPS.
- Suitable for WM boards with FLEX additive.

| Product name               | Coverage per 1m <sup>2</sup><br>[kg/m <sup>2</sup> ] *               | Unit of Measure<br>[kg] |
|----------------------------|--|-------------------------|
| <b>SOLTHERM BC-P QUICK</b> | Polystyrene board bonding<br>≥ 4.0<br>Base coat application<br>≥ 4.0 | 25                      |

## SOLTHERM BC-P QUICK + FLEX PREMIUM 2 COMPONENTS BASE COAT NO PRIMER REQUIRED FOR MW BOARDS



- Increased resistance to cracking and crazing.
- Offers excellent adhesion to mineral surface and EPS and mineral wool.
- Water vapour permeable.

- Application at ambient and surface temperatures from 3°C.
- Component of SOLTHERM thermal insulation systems.
- Suitable for WM boards.

| Product name                      | Coverage per 1m <sup>2</sup><br>[kg/m <sup>2</sup> ] *               | Unit of Measure<br>[kg] |
|-----------------------------------|--|-------------------------|
| <b>SOLTHERM BC-P QUICK + FLEX</b> | Polystyrene board bonding<br>≥ 4.0<br>Base coat application<br>≥ 4.0 | 25+2                    |



# SETTING ACCELERATORS

## SOLTHERM 4 SEASONS

### SETTING AND DRYING ACCELERATOR



- Enables render application in cold temperatures and increased relative humidity.
- Solvent free.
- Does not change the performance of the renders SOLTHERM AFC, AF-P+ or SFC-P.

| Product name              | Coverage per 1m <sup>2</sup><br>[kg/m <sup>2</sup> ] * | Unit of Measure<br>[g] |
|---------------------------|--|------------------------|
| <b>SOLTHERM 4 SEASONS</b> | 175 / 25 kg of adhesive                                | 175                    |

## SOLTHERM 4 SEASON-D

### ADMIX FOR THE ADHESIVE MORTARS



- Speeds up setting and drying of adhesive mortars: SOLTHERM UB, UB-P, MB (250 g) in cold temperatures and increased humidity.
- Easy dosage control.
- Does not change the performance of base coat.

| Product name               | Coverage per 1m <sup>2</sup><br>[kg/m <sup>2</sup> ] * | Unit of Measure<br>[g] |
|----------------------------|--|------------------------|
| <b>SOLTHERM 4 SEASON-D</b> | 250 / 25 kg of adhesive                                | 250                    |

# REINFORCING MESH

## SOLTHERM HD 158/S

### ALKALI RESISTANT FIBREGLASS REINFORCEMENT MESH



- Reinforcement for the SOLTHERM the EWI Systems..
- Additional reinforcement of waterproof membranes such as BOLIX Hydro Duo or BOLIX Hydro.
- Optionally, to reinforce levelling compounds applied to mineral surfaces, including adhesives for embedding fibreglass mesh (such as SOLTHERM UB).

| Product name             | Surface mass<br>[g/m <sup>2</sup> ] | Coverage per<br>1m <sup>2</sup> | Unit of Measure<br>[m <sup>2</sup> ] |
|--------------------------|-------------------------------------|---------------------------------|--------------------------------------|
| <b>SOLTHERM HD 158/S</b> | 158                                 | 1.10                            | 50                                   |

## SOLTHERM HD 335/P

### ALKALI RESISTANT FIBREGLASS REINFORCEMENT MESH



- To reinforce base coats in External Wall Insulation Systems.
- \* To be installed with the reinforcing mesh SOLTHERM HD 158/S.

| Product name             | Surface mass<br>[g/m <sup>2</sup> ] | Coverage per<br>1m <sup>2</sup> | Unit of Measure<br>[m <sup>2</sup> ] |
|--------------------------|-------------------------------------|---------------------------------|--------------------------------------|
| <b>SOLTHERM HD 335/P</b> | 367                                 | 1.00                            | 25                                   |

# FOAMS

## SOLTHERM ZP

### EPS FOAM ADHESIVE



- High coverage - up to 8m from one cartridge, when polystyrene boards are installed on walls.
- Low-pressure.
- Dowelling after only 2h.

- Enables application at temperatures  $\geq 0^{\circ}\text{C}$ .
- Excellent adhesion to mineral surfaces and to white and GRAY EPS boards and XPS boards.
- Very good thermal and sound insulation properties.

| Product name       | Rendement [m <sup>2</sup> ]                                       | Unit of Measure [ml] |
|--------------------|---|----------------------|
| <b>SOLTHERM ZP</b> | ca. 8 (above grade insulation)<br>ca. 12 (below grade insulation) | 750                  |

## SOLTHERM PM-L

### LOW-PRESSURE INSTALLATION PU FOAM



- High coverage - up to 50 dm<sup>2</sup> from one cartridge.
- Low-pressure.
- Enables application at temperatures  $\geq -10^{\circ}\text{C}$ .

- Excellent adhesion to mineral surfaces and insulation boards.
- Very good thermal and sound insulation properties et acoustique.
- Resistant to fungi and mould growth and to humidity.

| Product name         | Rendement [m <sup>2</sup> ] | Unit of Measure [ml] |
|----------------------|-----------------------------|----------------------|
| <b>SOLTHERM PM-L</b> | 50                          | 680                  |

# RENDER SCRATCH COAT

## BOLIX OT

### LIGHTWEIGHT CEMENT AND LIME BASED RENDER



- Promotes surface adhesion, provides a key and facilitates the application of cement and cement-lime renders.

- Evens out surface porosity.
- Can be hand or machine applied.

| Product name    | Coverage per 1m <sup>2</sup> [kg/m <sup>2</sup> ] *             | Unit of Measure [kg] |
|-----------------|---|----------------------|
| <b>BOLIX OT</b> | ca. 3.00 - 4.00<br>(for application of 50% of the wall surface) | 25                   |

## BOLIX TCW-L

### LIGHTWEIGHT CEMENT AND LIME BASED RENDER



- Offers good adhesion to mineral surfaces.
- Contains perlite - high coverage.
- Easy to work and trowel.
- Water vapour permeable.

- Enhanced weather resistance.
- Hydrophobized.
- Can be hand or machine applied.

| Product name       | Coverage per 1m <sup>2</sup> [kg/m <sup>2</sup> ] * | Unit of Measure [kg] |
|--------------------|---|----------------------|
| <b>BOLIX TCW-L</b> | ca. 11.0<br>(per 1 cm of coat thickness)            | 25                   |

## COMPARISON OF RENDERS FOR EWI SYSTEMS

| RENDER SOLTHERM                       | SOLTHERM MTC WHITE | SOLTHERM MTC GRAY | SOLTHERM AFC | SOLTHERM AF-P+ | SOLTHERM SFC-P | SOLTHERM SFC-P+ |
|---------------------------------------|--------------------|-------------------|--------------|----------------|----------------|-----------------|
| VAPOUR PERMEABILITY                   | ● ● ●              | ● ● ●             | ●            | ● ●            | ● ● ●          | ● ● ●           |
| IMPACT RESISTANCE                     | ● ● ● *            | ● ● ● *           | ●            | ● ●            | ● ● ●          | ● ● ●           |
| RESISTANCE TO DAMAGE                  | ●                  | ●                 | ●            | ● ●            | ● ● ●          | <b>EXTREME</b>  |
| HYDROPHOBIC                           | ●                  | ●                 | ● ●          | ● ●            | ● ● ●          | <b>EXTREME</b>  |
| SELF-CLEANING EFFECT                  | ● ● ● *            | ● ● ● *           | ●            | ● ●            | ● ● ●          | <b>EXTREME</b>  |
| RESISTANCE TO ALGAL AND FUNGAL GROWTH | ● ●                | ● ●               | ● ●          | ● ●            | ● ● ●          | ● ● ●           |

\* TOP COATED WITH PAINT SOLTHERM STC-P +

● STANDARD LEVEL   ● ● ENHANCED   ● ● ● HIGH LEVEL   **EXTREME** EXTREME LEVEL

## SOLTHERM AFC ACRYLIC RENDER RECOMMENDED KEY COAT: SOLTHERM AP COLOUR



- Enhanced weather resistance.
- Contains algal and fungal growth inhibitors.
- Provides low porosity and high flexibility.
- Ensures high colour stability in a wide range of colours.

- Very easy to work and trowel.
- Can be hand or machine applied.
- Component of the SOLTHERM systems with EPS.

| Product name              | Grain [mm] | Finition    | Unit of Measure [kg] | Average coverage 1m <sup>2</sup> [kg/m <sup>2</sup> ] |
|---------------------------|------------|-------------|----------------------|---|
| <b>SOLTHERM AFC 10</b>    | 1.0        | sand finish | 25                   | 1.7 - 2.2   |
| <b>SOLTHERM AFC 15</b>    | 1.5        | sand finish |                      | 2.2 - 2.8   |
| <b>SOLTHERM AFC 20</b>    | 2.0        | sand finish |                      | 2.8 - 3.4   |
| <b>SOLTHERM AFC 25 WT</b> | 2.5        | worm finish |                      | 3.0 - 3.5   |

## SOLTHERM MTC GRAY THIN-COAT MINERAL RENDER/ GRAY RECOMMENDED KEY COAT: SOLTHERM AP COLOUR



- High vapour permeability.
- Provides increased resistance to algal and fungal growth as well as weather conditions.

- Offers excellent adhesion to mineral surfaces.
- Component of the SOLTHERM systems with EPS and XPS and mineral wool.

| Product name             | Grain [mm] | Finition    | Unit of Measure [kg] | Average coverage 1m <sup>2</sup> [kg/m <sup>2</sup> ] |
|--------------------------|------------|-------------|----------------------|---|
| <b>SOLTHERM MTC 15 G</b> | ca. 1.5    | sand finish | 25                   | 2.0 - 2.7   |

## SOLTHERM MTC WHITE THIN - COAT MINERAL RENDER/ WHITE RECOMMENDED KEY COAT: SOLTHERM AP COLOUR



- High vapour permeability.
- Provides increased resistance to algal and fungal growth as well as weather conditions.

- Offers excellent adhesion to mineral surfaces.
- Component of the SOLTHERM systems with EPS and mineral wool.

| Product name              | Grain [mm] | Finition    | Unit of Measure [kg] | Average coverage 1m <sup>2</sup> [kg/m <sup>2</sup> ] |
|---------------------------|------------|-------------|----------------------|---|
| <b>SOLTHERM MTC 15</b>    | ca. 1.5    | sand finish | 25                   | 2.0 - 2.7   |
| <b>SOLTHERM MTC 20</b>    | ca. 2.0    | sand finish |                      | 2.5 - 3.2   |
| <b>SOLTHERM MTC 30</b>    | ca. 3.0    | sand finish |                      | 3.2 - 4.0   |
| <b>SOLTHERM MTC 25 WT</b> | ca. 2.5    | sand finish |                      | 3.0 - 3.5   |

## SOLTHERM SDR POLYMER MODIFIED DASH RECEIVER



- Breathable.
- Water resistant.
- Durable.
- Good adhesion.

- Cement based, requiring addition of water before use.
- Excellent background for any dry dash or roughcast finishes.
- Suitable for different substrates.

| Product name        | Grain [mm] | Finition      | Unit of Measure [kg] | Average coverage 1m <sup>2</sup> [kg/m <sup>2</sup> ]   |
|---------------------|------------|---------------|----------------------|---|
| <b>SOLTHERM SDR</b> | N/A        | dash receiver | 25                   | Approx. 1.5 kg per mm thick m <sup>2</sup> .<br>6 -10 mm thickness / 9-15 kg per m <sup>2</sup> |

# THIN-COAT RENDER

## SOLTHERM AMC

### MOSAIC RENDER

RECOMMENDED KEY COAT: SOLTHERM AP COLOUR



- Available in 340 colours.
- Excellent resistance to abrasion and mechanical damage.
- Enhanced weather resistance.
- Easy to keep clean.
- Component of the SOLTHERM systems with EPS and mineral wool and XPS.

| Product name | Grain [mm] | Unit of Measure [kg] | Average coverage 1m <sup>2</sup> [kg/m <sup>2</sup> ] |
|--------------|------------|----------------------|---|
| SOLTHERM AMC | ca. 1.0    | 25                   | 2.0 - 3.0   |
|              |            | 15                   |   |
|              | ca. 1.5    | 25                   | 3.0 - 4.0   |
|              |            | 15                   |   |

## SOLTHERM AF-P+

### SILICONE- ACRYLIC RENDER

RECOMMENDED KEY COAT: SOLTHERM SNP COLOUR



- Provides low porosity and high flexibility.
- Provides increased resistance to algal and fungal growth as well as weather conditions.
- Offers excellent adhesion to mineral surfaces.
- Provides low porosity and high flexibility.
- Very easy to work and trowel.
- Can be hand or machine applied.
- Component of the SOLTHERM systems with EPS and XPS and mineral wool.

| Product name      | Grain [mm] | Finition    | Unit of Measure [kg] | Average coverage 1m <sup>2</sup> [kg/m <sup>2</sup> ] |
|-------------------|------------|-------------|----------------------|---|
| SOLTHERM AF-P+ 15 | 1.5        | sand finish | 25                   | 2.2 - 2.8   |
| SOLTHERM AF-P+ 20 | 2.0        | sand finish |                      | 2.8 - 3.4   |

## SOLTHERM SFC-P

### SILICONE RENDER

RECOMMENDED KEY COAT: SOLTHERM SNP COLOUR



- Micro-fibre reinforced - ensures increased resistance to cracking and scratching.
- Offers excellent adhesion to mineral surfaces.
- Low wettability and hydrophobic properties.
- Provides low porosity and high flexibility.
- Water vapour permeable.
- Provides high resistance to impact and thermal stress.
- Component of the SOLTHERM EWI systems with EPS and XPS and mineral wool.

| Product name         | Grain [mm] | Finition    | Unit of Measure [kg] | Average coverage 1m <sup>2</sup> [kg/m <sup>2</sup> ] |
|----------------------|------------|-------------|----------------------|---|
| SOLTHERM SFC-P 10    | 1.0        | sand finish | 25                   | 1.7 - 2.2   |
| SOLTHERM SFC-P 15    | 1.5        | sand finish |                      | 2.2 - 2.8   |
| SOLTHERM SFC-P 20    | 2.0        | sand finish |                      | 2.8 - 3.4   |
| SOLTHERM SFC-P 25 WT | 2.5        | worm finish |                      | 3.0 - 3.5   |

## SOLTHERM SFC-P+

### SILICONE RENDER WITH PEARL EFFECT

RECOMMENDED KEY COAT: SOLTHERM SNP COLOUR



- Offers the highest impact resistance (even above 150 J in the SOLTHERM ENDURANCE SYSTEMS).
- Self-cleaning properties, water beading or lotus effect - due to low wettability of the rendering and its hydrophobic properties.
- Provides increased resistance to algal and fungal growth as well as weather conditions.
- Micro fibres reinforced.
- Resistant to UV radiation (contains UV absorbers) as well as thermal stress and cracking
- Super flexible and water repellent.
- Component of the SOLTHERM EWI systems with EPS and XPS and mineral wool.

| Product name       | Grain [mm] | Finition    | Unit of Measure [kg] | Average coverage 1m <sup>2</sup> [kg/m <sup>2</sup> ] |
|--------------------|------------|-------------|----------------------|---|
| SOLTHERM SFC-P+ 15 | 1.5        | sand finish | 25                   | 2.2 - 2.8   |
| SOLTHERM SFC-P+ 20 | 2.0        |             |                      | 2.6 - 3.2   |



# EXTERIOR WALL PAINTS

COMPARATIVE TABLE OF FACADE PAINTS

| SOLTHERM FACADE PAINTS |                                       | SOLTHERM ACP     | SOLTHERM STPT | SOLTHERM STC-P   | SOLTHERM STC-P+              |
|------------------------|---------------------------------------|------------------|---------------|------------------|------------------------------|
| CHARACTERISTICS        | RESISTANCE TO ALGAL AND FUNGAL GROWTH | ● ●              | ● ● ●         | ● ● ●            | <b>EXTREME</b>               |
|                        | IMPACT RESISTANCE                     | ● ●              | ● ● ●         | ● ● ●            | <b>EXTREME</b>               |
|                        | WEATHER RESISTANCE                    | ● ●              | ● ●           | ● ● ●            | <b>EXTREME</b>               |
|                        | RESISTANCE TO EFFLORESCENCE           | ● ●              | ● ● ●         | ● ● ●            | ● ● ●                        |
|                        | VAPOUR PERMEABILITY                   | ●                | ● ● ●         | ● ● ●            | ● ● ●                        |
|                        | HYDROPHOBIC                           | ●                | ● ●           | ● ● ●            | <b>EXTREME</b>               |
|                        |                                       | ● STANDARD LEVEL | ● ● ENHANCED  | ● ● ● HIGH LEVEL | <b>EXTREME</b> EXTREME LEVEL |

## SOLTHERM ACP

### ACRYLIC PAINT

RECOMMENDED PRIMER: SOLTHERM SP



- Increased resistance to algal and fungal growth.
- Offers increased resistance to weather conditions and UV radiation - contains UV absorbers.

- Forms additional barrier - calcium ions blockers i.e. salt inhibitors.
- Ensures high colour stability and available in a wide range of colours.
- Component of the SOLTHERM systems with EPS.

| Product name        | Color | Average material consumption per 1m <sup>2</sup> [l/m <sup>2</sup> ] | Unit of Measure [l] |
|---------------------|-------|--|---------------------|
| <b>SOLTHERM ACP</b> | white | 0.18 – 0.25<br>(smooth and non-porous surface)                       | 18                  |
|                     | basic | 0.30 – 0.40<br>(rough surface)                                       | 18                  |

## SOLTHERM STPT

### SILICATE PAINT

RECOMMENDED PRIMER: SOLTHERM STP



- Highly vapour permeable.
- Component of the SOLTHERM systems with EPS and XPS and mineral wool.

- Offers increased resistance to weather conditions as well as algal and fungal growth (covered by the ITB Recommendation in the scope of renovation and anti-microbial protection).

| Product name         | Color | Average material consumption per 1m <sup>2</sup> [l/m <sup>2</sup> ] | Unit of Measure [l] |
|----------------------|-------|--|---------------------|
| <b>SOLTHERM STPT</b> | white | 0.18 – 0.25<br>(smooth and non-porous surface)                       | 18                  |
|                      | basic | 0.30 – 0.40<br>(rough surface)                                       | 18                  |

## SOLTHERM STC-P

### SILICONE PAINT

RECOMMENDED PRIMER: SOLTHERM SNP



- Provides high resistance to weather conditions and UV radiation - contains UV absorbers.
- Offers high hydrophobic properties (due to low wettability of the paint coat) and water vapour permeability.

- Provides low porosity and high flexibility.
- Offers increased resistance to: algal and fungal growth as well as salt efflorescence (contains calcium ions blockers i.e. salt inhibitors).
- Component of the SOLTHERM systems with EPS and XPS and mineral wool.

| Product name          | Color | Average material consumption per 1m <sup>2</sup> [l/m <sup>2</sup> ] | Unit of Measure [l] |
|-----------------------|-------|--|---------------------|
| <b>SOLTHERM STC-P</b> | white | 0.18 – 0.25<br>(smooth and non-porous surface)                       | 18                  |
|                       | basic | 0.30 – 0.40<br>(rough surface)                                       | 18                  |

## SOLTHERM STC-P+

### PREMIUM SILICONE PAINT

RECOMMENDED PRIMER: SOLTHERM SNP



- High resistance to weather conditions, algal and fungal growth and UV radiation (contains UV absorbers).
- Highly hydrophobic (self-cleaning, water beading effect) and water vapour permeable.

- Increased resistance to efflorescence.
- Ensures high colour stability in a wide range of colours.
- Component of the SOLTHERM EWI systems with EPS and mineral wool.

| Product name           | Color | Average material consumption per 1m <sup>2</sup> [l/m <sup>2</sup> ] | Unit of Measure [l] |
|------------------------|-------|--|---------------------|
| <b>SOLTHERM STC-P+</b> | white | 0.18 – 0.25<br>(smooth and non-porous surface)                       | 18                  |
|                        | basic | 0.30 – 0.40<br>(rough surface)                                       | 10                  |

# ANTIMICROBIAL WALL AND ROOF COATING

## BOLIX GLO

### ALGAECIDE AND FUNGICIDE AGENT

NOT AVAILABLE IN THE UK AND IRELAND MARKETS

- It effectively combats most of algae, fungi, lichen and moss that may grow on building envelope.
- Easy to apply - hand or spray.
- Water dilutable concentrate.



| Product name     | Average coverage<br>1m <sup>2</sup> [l/m <sup>2</sup> ] *          | Unit of Measure [l] |
|------------------|--|---------------------|
| <b>BOLIX GLO</b> | 0.035 - 0.065<br>(will vary with the surface porosity and texture) | 1<br>10             |

## BOLIX PRO

### ANTIMICROBIAL WALL AND ROOF COATING

- High resistance to algal and fungal growth.
- Enhanced weather resistance.
- Easy to apply - by hand or spray.
- Forms a clear film.
- Low wettability of the coating
- Reduces dust settling and build-up on the treated surface.



| Product name     | Average coverage<br>1m <sup>2</sup> [l/m <sup>2</sup> ] *                        | Unit of Measure [l] |
|------------------|--|---------------------|
| <b>BOLIX PRO</b> | 0.18 – 0.25<br>(smooth and non-porous surface)<br>0.30 – 0.40<br>(rough surface) | 20                  |

## PRIMER

### SOLTHERM AP COLOUR

#### ACRYLIC PRIMER



- Facilitates render application - contains quartz powder.
- Binds and strengthens the surface.
- Suppresses dust formation and evens out surface porosity.
- Protects the primed surface against adverse effect of moisture.
- Blocks out stains in base coats and prevents from bleeding through to the top coats.
- Prevents surface colour from showing through the render coat.
- Component of the SOLTHERM EWI systems with EPS and mineral wool batts.

| Product name              | Color | Average material consumption per 1m <sup>2</sup> [kg/m <sup>2</sup> ] | Unit of Measure [kg] |
|---------------------------|-------|---|----------------------|
| <b>SOLTHERM AP COLOUR</b> | white | 0.25 - 0.40   | 25                   |
|                           | basic |   | 25                   |

### SOLTHERM SNP COLOUR

#### SILICONE PRIMER



- Facilitates render application - contains quartz powder.
- Binds and strengthens the surface.
- Suppresses dust formation and evens out surface porosity.
- Protects the primed surface against adverse effect of moisture.
- Blocks out stains in base coats and prevents from bleeding through to the top coats.
- Prevents surface colour from showing through the render coat.
- Component of the SOLTHERM systems with EPS and mineral wool.

| Product name               | Color | Average material consumption per<br>1m <sup>2</sup> [kg/m <sup>2</sup> ] | Unit of Measure [kg] |
|----------------------------|-------|--|----------------------|
| <b>SOLTHERM SNP COLOUR</b> | white | 0.25 - 0.40  | 25                   |
|                            | basic |  | 25                   |

## SOLTHERM STP

### SILICATE PRIMER FOR SILICATE PAINT



- Binds and strengthens the surface.
- Suppresses dust formation and evens out surface porosity.
- Protects the primed surface against adverse effect of moisture.

- Prevents surface colour from showing through the render coat.
- Component of the SOLTHERM systems with EPS and mineral wool batts.

| Product name        | Color     | Average material consumption per 1m <sup>2</sup> [kg/m <sup>2</sup> ] | Unit of Measure [kg] |
|---------------------|-----------|---|----------------------|
| <b>SOLTHERM STP</b> | colorless | 0.10 - 0.20   | 20                   |

## SOLTHERM SNP

### SILICONE PRIMER FOR SILICONE PAINT



- Binds and strengthens the surface.
- Suppresses dust formation and evens out surface porosity.
- Protects the primed surface against adverse effect of moisture.

- Prevents surface colour from showing through the render coat.
- Component of the SOLTHERM systems with EPS and mineral wool batts.

| Product name        | Color     | Average material consumption per 1m <sup>2</sup> [kg/m <sup>2</sup> ] | Unit of Measure [kg] |
|---------------------|-----------|---|----------------------|
| <b>SOLTHERM SNP</b> | colorless | 0.10 - 0.20   | 20                   |



# PRIMER & SURFACE STRENGTHENER

## SOLTHERM T

### PRIMER



- Perfectly seals off and strengthens the primed surface.
- Improves adhesion of adhesives to mineral substrates.
- Facilitates bonding and fixing of insulation material and ceramic or stone tiles.
- Evens out the setting and drying process of adhesive coatings.
- Suppresses dust formation and evens out surface porosity.
- Protects the primed surface against adverse effect of moisture.
- Solvant free.

| Product name      | Average material consumption per 1m <sup>2</sup> [kg/m <sup>2</sup> ] | Unit of Measure [kg] |
|-------------------|---|----------------------|
| <b>SOLTHERM T</b> | 0.10 - 0.30   | 20                   |

## BOLIX ULTRAGRUNT

### UNIVERSAL PRIMER



- Binds and strengthens the surface.
- Promotes adhesion and provides a key for subsequent coatings.
- Suppresses dust formation and evens out surface porosity.
- Prevents surface colour from showing through the render coat.
- Solvent-free and fast-drying.

| Product name            | Average material consumption per 1m <sup>2</sup> [kg/m <sup>2</sup> ] | Unit of Measure [kg] |
|-------------------------|---|----------------------|
| <b>BOLIX ULTRAGRUNT</b> | 0.10 - 0.50   | 10<br>5              |

## SOLTHERM CS

### NON-POROUS AND CRITICAL SUBSTRATE PRIMER



- Perfectly seals off and strengthens the primed surface.
- Forms a bonding bridge, provides a key - its quartz content makes it perfect for smooth and non-porous surfaces.
- Improves adhesion of adhesives to mineral substrates.
- Evens out the setting and drying process of adhesive coatings.
- Facilitates bonding and fixing of insulation material and ceramic or stone tiles.
- Protects the primed surface against adverse effect of moisture.
- Solvent-free and fast-drying.
- Protects the primed surface against adverse effect of moisture.

| Product name       | Average material consumption per 1m <sup>2</sup> [kg/m <sup>2</sup> ] | Unit of Measure [kg] |
|--------------------|---|----------------------|
| <b>SOLTHERM CS</b> | 0.25 - 0.40<br>(depending on surface)                                 | 14<br>7              |

## SOLTHERM AP

### PRIMER FOR ACRYLIC PAINTS



- Suppresses dust formation and evens out surface porosity.
- Protects the primed surface against adverse effect of moisture.

| Product name       | Average material consumption per 1m <sup>2</sup> [kg/m <sup>2</sup> ] | Unit of Measure [kg] |
|--------------------|---|----------------------|
| <b>SOLTHERM AP</b> | 0.10 - 0.15   | 20                   |

## SOLTHERM SP

### DEEP-PENETRATING PRIMER FOR POROUS SUBSTRATES



- Binds and strengthens the surface.
- Dedicated for highly porous surfaces.
- Promotes adhesion and provides a key for subsequent coatings.
- Suppresses dust formation and evens out surface porosity.
- Protects the primed surface against adverse effect of moisture.
- Prevents surface colour from showing through the render coat.
- Solvant free.

| Product name       | Average material consumption per 1m <sup>2</sup> [kg/m <sup>2</sup> ] | Unit of Measure [kg] |
|--------------------|---|----------------------|
| <b>SOLTHERM SP</b> | 0.10 - 0.20   | 10<br>5              |

# PRIMER & SURFACE STRENGTHENER

## SOLTHERM PTE EMULSION INSULATION FOR GREY EPS



- Quartz fillers ensures increased base coat adhesion to polystyrene.
- Significantly reduces heating of GRAY EPS when exposed to sunlight and in consequence reduces its thermal deformation.
- Does not contain organic solvents (VOC).

- Can be hand or machine applied.
- Designed for thermal insulation of passive houses and energy efficient buildings with EPS boards of thickness up to 50 cm.

| Product name        | Performance<br>[m <sup>2</sup> /kg] | Unit of Measure<br>[kg] |
|---------------------|-------------------------------------|-------------------------|
| <b>SOLTHERM PTE</b> | up to 10                            | 10                      |

## SOLTHERM OM ACRYLIC BASED HYDROPHOBIC COATING



- Seals off and strengthens the treated surface and improves the visual effect.
- Suppresses dust formation and evens out surface porosity.

- Minimises staining and efflorescence or lime bloom development on the treated surface.
- Solvent-free.

| Product name       | Average material consumption<br>per 1m <sup>2</sup> [kg/m <sup>2</sup> ] | Unit of Measure<br>[kg] |
|--------------------|--|-------------------------|
| <b>SOLTHERM OM</b> | 0.10 - 0.30  | 5                       |

## SOLTHERM IMP SILICONE BASED HYDROPHOBIC COATING



- Reduces water absorption.
- Does not leave a film.
- Highly vapour permeable.
- Deep-penetrating.
- Solvent-free and alkali-resistant.
- Does not alter the colour of the treated surface or give a glossy finish to it.

- Protects from dirt build-up, minimises staining and efflorescence development.
- Provides increased weather resistance to the treated surface.

| Product name        | Average material consumption<br>per 1m <sup>2</sup> [kg/m <sup>2</sup> ] | Unit of Measure<br>[kg] |
|---------------------|--|-------------------------|
| <b>SOLTHERM IMP</b> | 0.10 - 0.50  | 1<br>5                  |

## SOLTHERM ATC FACADE PREPARATION WASH CONCENTRATE



- Highly effective - "active foam".
- Enables easy application - by hand or spray.

- Biodegradable - safe to use.
- Water dilutable concentrate.

| Product name        | Average material consumption<br>per 1m <sup>2</sup> [kg/m <sup>2</sup> ] | Unit of Measure<br>[kg] |
|---------------------|--|-------------------------|
| <b>SOLTHERM ATC</b> | 0.035 - 0.080<br>(depending on degree of soiling)                        | 1<br>5                  |

# BEDDING AND JOINT

## BOLIX M10

### THINSET FOR BEDDING SILICATE AND AERATED CONCRETE BLOCKS



- Compressive strength  $\geq 10$  MPa.
- Prevents thermal bridging.
- Water vapour permeable.
- No substrate wetting necessary prior to render application.
- High yield, easy to apply.

| Product name     | Color | Average material consumption per 1m <sup>2</sup> [kg/m <sup>2</sup> ] | Unit of Measure [kg] |
|------------------|-------|---|----------------------|
| <b>BOLIX M10</b> | white | ca. 4.0<br>(for a 3 mm joint and wall thickness of 24 cm)             | 25                   |
|                  | gray  |   |                      |

## SOLTHERM KL

### CEMENTITIOUS POINTING MORTAR



- Contains trass cement.
- Easy to prepare, work and apply.
- Enhanced resistance to lime bloom.
- Water and frost resistant after setting, vapour permeable.

| Product name       | Color | Average material consumption per 1m <sup>2</sup> [kg/m <sup>2</sup> ]   | Unit of Measure [l] |
|--------------------|-------|---|---------------------|
| <b>SOLTHERM KL</b> | white | Depending on the joint width*:-<br>- 10 mm ca. 37<br>- 12 mm ca. 45<br>- 15 mm ca. 55<br><br>* When building a full brick wall 12 cm wide | 25                  |

\* BOLIX KL in white does not contain trass cement

## SOLTHERM LRC

### CEMENTITIOUS LEVELLING AND DUBBING RENDER



- Frost resistant
- Very good adhesion to substrates.
- Low linear shrinkage

| Product name        | Average material consumption per 1m <sup>2</sup> [kg/m <sup>2</sup> ] | Unit of Measure [kg] |
|---------------------|---|----------------------|
| <b>SOLTHERM LRC</b> | ca. 1.9<br>(per each 1 mm of thickness)                               | 25                   |

## SOLTHERM GF

### GYPHUM FILLER



- Easy to work, apply and sand.
- Non-shrinking.
- Excellent adhesion to the substrate.
- Can be hand or machine applied.

| Product name       | Average material consumption per 1m <sup>2</sup> [kg/m <sup>2</sup> ] | Unit of Measure [kg] |
|--------------------|---|----------------------|
| <b>SOLTHERM GF</b> | ca. 0.9<br>(per each 1 mm of thickness)                               | 20                   |



# SOLTHERM DESIGN COLLECTION



# DESIGN COLLECTION EFFECTS

## SOLTHERM WOOD

### DESIGN COLLECTION EFFECTS

A solution, which combines the timeless appeal of wooden decorative elements with reliability and robustness of modern finishes. It will give a unique effect of wood board to your walls. With SOLTHERM WOOD you no longer have to worry about wood treatment and maintenance. And yet, you can enjoy a wood board finish in a colour you like. SOLTHERM WOOD is offered in eight colours - from light to very dark wood colour. It comes as SOLTHERM WOOD STAMP or SOLTHERM WOOD TR.

## SOLTHERM WOOD STAMP / DECO WOOD



Oren Oak / BWD S 51



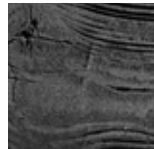
Natural Oak / BWD S 52



White Oak / BWD S 53



Dark Oak / BWD S 54



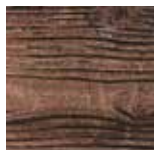
Ebony / BWD S 60



Mahogany / BWD S 55



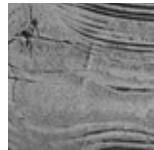
Nut / BWD S 56



Medium Brown / BWD S 57



Cream / BWD S 58



GRAY / BWD S 59



| COMPONENTS   | PRODUCT NAME               | UNIT OF MEASURE | COVERAGE [UoM/m <sup>2</sup> ] | AVERAGE COVERAGE [UoM/m <sup>2</sup> ] |
|--------------|----------------------------|-----------------|--------------------------------|--|
| PRIMER       | <b>SOLTHERM T</b>          | kg              | 0.20                           | 0.10 ÷ 0.30                            |
| RENDER       | <b>SOLTHERM WS</b>         | kg              | 4.50                           | ca. 1.5 (per 1 mm)                     |
| PRIMER       | <b>SOLTHERM T</b>          | kg              | 0.20                           | 0.10 ÷ 0.30                            |
| FINISH GLAZE | <b>SOLTHERM DECO LAZUR</b> | l               | 0.15                           | ca. 0.15                               |
| SEALER*      | <b>SOLTHERM OM</b>         | kg              | 0.20                           | 0.10 ÷ 0.30                            |

\*optional

## SOLTHERM WOOD TR



Oren Oak / BWD TR 51



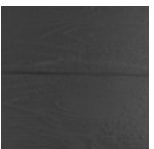
Natural Oak / BWD TR 52



White Oak / BWD TR 53



Dark Oak / BWD TR 54



Ebony / BWD TR 60



Mahogany / BWD TR 55



Nut / BWD TR 56



Medium Brown / BWD TR 57



Cream / BWD TR 58



GRAY / BWD TR 59



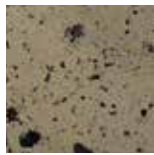
| COMPONENTS   | PRODUCT NAME               | UNIT OF MEASURE | AVERAGE COVERAGE [UoM/m <sup>2</sup> ] | COVERAGE [UoM/m <sup>2</sup> ] |
|--------------|----------------------------|-----------------|--|--------------------------------|
| KEY COAT     | <b>SOLTHERM AP COLOUR</b>  | kg              | 0.33                                   | 0.25 ÷ 0.40                    |
| RENDER       | <b>SOLTHERM TR</b>         | kg              | 1.75                                   | 1.75 (1 mm coat thickness)     |
| FINISH GLAZE | <b>SOLTHERM DECO LAZUR</b> | l               | 0.15                                   | ca. 0.15                       |
| SEALER*      | <b>SOLTHERM OM</b>         | kg              | 0.20                                   | 0.10 ÷ 0.30                    |

\*optional



## SOLTHERM DECO MICA

The DECO MICA effect has been specially developed for those who love expressive visual effects. Render finish imitating stone is filled with mica particles, which give outstanding visual effects (glitter effect). It can be applied to large surfaces to create original decorative finishes. SOLTHERM DECO MICA provides a perfect alternative for multi-component, composite and multi-layered finishes. This easy-to-apply product will give a special finish to your building facade. Available in 35 colours.



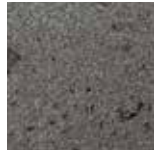
Endless Summer / TMD 2



Old beauty / TMD 4



Argent Quenn / TMD 7



Stormy Sky / TMD 11



Green Ghost / TMD 8



Or Spirit / TMD 9



Milk Lake / TMD 10



Deep Treasure / TMD 16



Dark Side / TMD 12



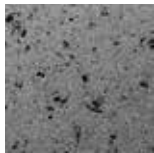
Electric Wine / TMD 13



Warm Cream / TMD 15



Soft Grass / TMD 22



Argent Sand / TMD 17



Perfect Harmony / TMD 20



Natural Beauty / TMD 21



Cold Wind / TMD 26



African Fruit / TMD 23



Magic Night / TMD 24



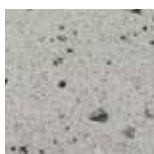
Green Vision / TMD 25



Silent Lady / TMD 33



Exclusive Spice / TMD 28



GRAY Light / TMD 29



Oren Rain / TMD 32



Spring Break / TMD 45



Dark Desert / TMD 34



Dusty Rose / TMD 35



Mineral White / TMD 37



Soft Pearl / TMD 39



Tropical Wave / TMD 41



Hypnotic Dance / TMD 42



Sand Hill / TMD 44



Exotic Vision / TMD 46



Cloud of Dust / TMD 47



Bay Fog / TMD 48



Elegant GRAY / TMD 49



| COMPONENTS        | PRODUCT NAME              | UNIT OF MEASURE | AVERAGE COVERAGE<br>[UoM/m <sup>2</sup> ] | COVERAGE<br>[UoM/m <sup>2</sup> ] |
|-------------------|---------------------------|-----------------|---|-----------------------------------|
| KEY COAT          | <b>SOLTHERM AP COLOUR</b> | kg              | 0.33                                      | 0.25 ÷ 0.40                       |
| DECORATIVE RENDER | <b>SOLTHERM AMC DECO</b>  | kg              | 3.70                                      | 2.90 ÷ 4.50                       |

# DESIGN COLLECTION EFFECTS

## SOLTHERM DECO<sub>BM</sub>

Bolix DECO<sub>BM</sub> is a range of colourful decorative exposed aggregate finishes, providing natural stone effect that will give a new look to your interior as well as exterior walls of new and existing buildings. It is easy to apply so that you can quickly achieve the desired effect. Composed of carefully selected aggregate and premium acrylic binders, it gives a decorative touch to building surfaces. This ready-mixed render finish provides high resistance to mechanical damage and UV radiation as well as increased weather resistance and to fungal and algal growth, what make it perfect for cornices, plinths, pilasters, etc. The render available in over 35 colours.



Endless Summer / BM 2



Foggy Coast / BM 3



Old beauty / BM 4



Argent Quenn / BM 7



Green Ghost / BM 8



Or Spirit / BM 9



Milk Lake / BM 10



Stormy Sky / BM 11



Dark Side / BM 12



Electric Wine / BM 13



Warm Cream / BM 15



Deep Treasure / BM 16



Argent Sand / BM 17



Perfect Harmony / BM 20



Natural Beauty / BM 21



Soft Grass / BM 22



African Fruit / BM 23



Magic Night / BM 24



Green Vision / BM 25



Cold Wind / BM 26



Exclusive Spice / BM 28



GRAY Light / BM 29



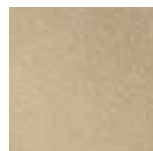
Oren Rain / BM 32



Silent Lady / BM 33



Mineral White / BM 37



Soft Pearl / BM 39



Tropical Wave / BM 41



Hypnotic Dance / BM 42



Sand Hill / BM 44



Spring Break / BM 45



Exotic Vision / BM 46



Cloud of Dust / BM 47



Bay Fog / BM 48



Elegant GRAY / BM 49



Rust / BM 50



| COMPONENTS        | PRODUCT NAME                      | UNIT OF MEASURE | AVERAGE COVERAGE [UoM/m <sup>2</sup> ] | COVERAGE [UoM/m <sup>2</sup> ] |
|-------------------|-----------------------------------|-----------------|--|--------------------------------|
| KEY COAT          | <b>SOLTHERM AP COLOUR</b>         | kg              | 0.33                                   | 0.25 ÷ 0.40                    |
| DECORATIVE RENDER | <b>SOLTHERM DECO<sub>WM</sub></b> | kg              | 3.00                                   | 2.50 ÷ 3.50                    |

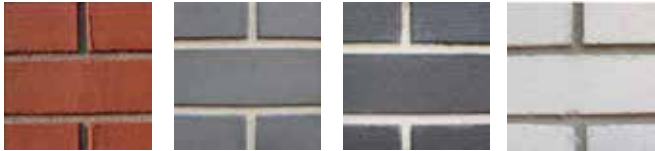
| COMPONENTS        | PRODUCT NAME                           | UNIT OF MEASURE | COVERAGE [UoM/m <sup>2</sup> ] | COVERAGE [UoM/m <sup>2</sup> ] |
|-------------------|--|-----------------|--------------------------------|--------------------------------|
| KEY COAT          | <b>SOLTHERM AP COLOUR</b>              | kg              | 0.33                           | 0.25 ÷ 0.40                    |
| DECORATIVE RENDER | <b>SOLTHERM DECO<sub>WM</sub> RUST</b> | kg              | 3.00                           | 2.50 ÷ 3.50                    |

## SOLTHERM BRICK / DECOBRICK

Associated with traditional construction material, nowadays bricks have become an inspiration for creating interesting decorative finishes. Brick decorations give the appearance of solid brickwork and bring a traditional look to your exterior. The advantage is that they do not require expensive, complicated operations. SOLTHERM DECOBRICK is achieved using a 2-coat brick effect render system. The base coat is trowel applied and prior to initial set, a top coat of coloured render is applied and textured to give the impression of real brick. The top coat is carefully cut back, using a specially designed cutting tool, providing a truly realistic brick-effect finish.



Juicy Sunset (BBR 31) Sunny Morning (BBR 32) Wealth of Land (BBR 33) Breath of the Desert (BBR 34) Natural Dawn (BBR 35)



Brown Flame (BBR 36) Misty Morning (BBR 37) Polar Night (BBR 38) Movin Science (BBR 39)



| COMPONENTS   | PRODUCT NAME                       | UNIT OF MEASURE | AVERAGE COVERAGE [UoM/m <sup>2</sup> ] | COVERAGE [UoM/m <sup>2</sup> ] |
|--------------|------------------------------------|-----------------|--|--------------------------------|
| KEY COAT     | <b>SOLTHERM TBR</b>                | kg              | 0.33                                   | 0.25 ÷ 0.40                    |
| RENDER       | <b>SOLTHERM BFC BRICK TOP COAT</b> | kg              | 1.75                                   | 1.75 (1 mm coat thickness)     |
| FINISH GLAZE | <b>SOLTHERM IMP</b>                | l               | 0.15                                   | ca. 0.15                       |

## SOLTHERM CONCRETE

This render producing a faux concrete effect makes an excellent example of a modern interpretation of timeless elegance. It brings raw, industrial-inspired effect to create an attractive and modern textural finish that will match even the most sophisticated decorative concepts. What is more, it blends in perfectly with metal, wood or glass, providing a unique textural look of concrete. Application of a special glaze will give a fantastic final touch to it as it offers unlimited possibilities to play with shades.



Snow White Natural Cement Anthracite Dark



| COMPONENTS   | PRODUCT NAME               | UNIT OF MEASURE | AVERAGE COVERAGE [UoM/m <sup>2</sup> ] | COVERAGE [UoM/m <sup>2</sup> ] |
|--------------|----------------------------|-----------------|--|--------------------------------|
| KEY COAT     | <b>SOLTHERM T</b>          | kg              | 0.09                                   | 0.08-0.10                      |
| RENDER       | <b>SOLTHERM TBR</b>        | kg              | 4.00                                   | 3.00-5.00                      |
| FINISH GLAZE | <b>SOLTHERM T</b>          | kg              | 0.11                                   | 0.10-0.12                      |
|              | <b>SOLTHERM DECO LAZUR</b> | l               | 0.12                                   | 0.12                           |

| COMPONENTS   | PRODUCT NAME               | UNIT OF MEASURE | AVERAGE COVERAGE [UoM/m <sup>2</sup> ] | COVERAGE [UoM/m <sup>2</sup> ] |
|--------------|----------------------------|-----------------|--|--------------------------------|
| KEY COAT     | <b>SOLTHERM T</b>          | kg              | 0.09                                   | 0.08-0.10                      |
| RENDER       | <b>SOLTHERM WS</b>         | kg              | 4.00                                   | 3.00-5.00                      |
| FINISH GLAZE | <b>SOLTHERM T</b>          | kg              | 0.11                                   | 0.10-0.12                      |
|              | <b>SOLTHERM DECO LAZUR</b> | l               | 0.12                                   | 0.12                           |

# DESIGN COLLECTION EFFECTS

## SOLTHERM DECO

Having an exposed stone effect no longer involves putting additional strain on building structure and on home budget. With this special thin-coat plaster, composed of natural and manufactured aggregates, you can easily give a sandstone finish to your walls - DECO STONE EFFECT. Since it is easy to apply and available in various colours, you can quickly achieve the desired effect. Moreover, the acrylic plaster is highly resistant to mechanical damage, what makes it perfect for cornices, plinths, pilasters, etc.



| COMPONENTS | PRODUCT NAME                      | UNIT OF MEASURE | COVERAGE PER [UoM/m <sup>2</sup> ] | COVERAGE [UoM/m <sup>2</sup> ] |
|------------|-----------------------------------|-----------------|------------------------------------|--------------------------------|
| KEY COAT   | <b>SOLTHERM AP COLOUR</b>         | kg              | 0.33                               | 0.25 ÷ 0.40                    |
| RENDER     | <b>SOLTHERM DECO<sub>AM</sub></b> | kg              | 4.30                               | 3.80 - 4.80                    |
| KEY COAT   | <b>SOLTHERM AP COLOUR</b>         | kg              | 0.33                               | 0.25 ÷ 0.40                    |
| RENDER     | <b>SOLTHERM DECO<sub>ST</sub></b> | kg              | 3.15                               | 2.80 - 3.50                    |

\*OPTIONALLY SOLTHERM OM

# DESIGN COLLECTION EFFECTS

## EXAMPLE DASHING AGGREGATES / PREMIUM DASH AND ULTIMATE DASH SYSTEMS



Arisaig



Artic



Ashton



Derby Spar



Dolomite Roughcast



Glenarm Roughcast



Hb-Castlehill



Nordic Roughcast



Pembroke Spar



Pembroke Spar



Arcane Roughcast



Barleycorn Roughcast



Buff Roughcast



Caladonian Harvest Roughcast



## SOLTHERM TBR

### BRICK EFFECT FINISH BASECOAT



- Water repellent.
- For interior and exterior use.
- Easy to use.
- Can be applied to MW and EPS insulation systems and to surfaces.

| Product name        | Color  | Average material consumption per 1m <sup>2</sup> [l/m <sup>2</sup> ]   | Unit of Measure [l] |
|---------------------|--|--|---------------------|
| <b>SOLTHERM TBR</b> | GRAY - in a colour simulating the appearance of traditional joints in brickwork and concrete masonry | 8.0 - 14.0<br>(Brick effect: 6-8 mm coat)<br>4.0 - 5.0<br>(stamped concrete effect: 3-4 mm coat)<br>3.0 - 4.0<br>(textured concrete effect: 2-3 mm coat) | 25                  |

## SOLTHERM BFC BRICK TOP COAT

### BRICK EFFECT FINISH TOP COAT



- Coloured.
- Water repellent.
- Easy to use.
- Component of the SOLTHERM EWI systems with EPS and mineral wool.

| Product name                       | Color  | Average material consumption per 1m <sup>2</sup> [l/m <sup>2</sup> ] | Unit of Measure [l] |
|------------------------------------|--|--|---------------------|
| <b>SOLTHERM BFC BRICK TOP COAT</b> | as in the colour chart BOLIX DESIGN COLLECTION | 5.0-8.5  | 25                  |

## SOLTHERM DIAMENT

### EXTERNAL DECORATIVE EFFECT, SMALL SPARKLING PARTICLES MIXED IN THE RENDER REFLECT LIGHT AND GLITTER



- Gentle glitter.
- Produce a shimmery glitter effect.

| Product name            | Average material consumption per 1m <sup>2</sup> [l/m <sup>2</sup> ] | Unit of Measure [l] |
|-------------------------|--|---------------------|
| <b>SOLTHERM DIAMENT</b> | 0,1-0.2  | 2.5                 |

## SOLTHERM DECO LAZUR

### ACRYLIC FINISH GLAZE



- Solvent free.
- Enhanced weather resistance.
- Provides low porosity and high flexibility.

| Product name               | Color  | Average material consumption per 1m <sup>2</sup> [l/m <sup>2</sup> ] | Unit of Measure [l] |
|----------------------------|--|--|---------------------|
| <b>SOLTHERM DECO LAZUR</b> | golden oak, natural oak, white, dark oak, mahogany, walnut, silver brown, creamy | ca. 0.15   | 1                   |

## SOLTHERM BR

### EXTERNAL DECORATIVE EFFECT



- Protects the sealed surface against adverse effect of moisture penetration.
- Solvent free.
- Dries to a clear, washable finish with glitter flakes that shimmer with light.

| Product name       | Color        | Average material consumption per 1m <sup>2</sup> [l/m <sup>2</sup> ] | Unit of Measure [l] |
|--------------------|--------------|--|---------------------|
| <b>SOLTHERM BR</b> | or<br>argent | 0.06 - 0.10<br>(smooth surface)<br>0.10 - 0.15<br>(rough surfaces)   | 1                   |

## SOLTHERM AMC DECO

### DECORATIVE RENDER WITH MICA PARTICLES



- 36 attractive patterns.
- High resistance to mechanical damage and UV radiation.
- Increased resistance to algal and fungal growth.
- Component of the SOLTHERM systems.

| Product name               | Average material consumption per 1m <sup>2</sup> [kg/m <sup>2</sup> ] | Unit of Measure [kg] |
|----------------------------|---|----------------------|
| <b>SOLTHERM AMC DECO**</b> | 2.90 - 4.50   | 25                   |

# DECORATIVE EFFECTS

## SOLTHERM TR DECORATIVE EFFECT RENDER



- Enables creation of endless textures and patterns.
- Provides increased resistance to algal and fungal growth as well as weather conditions.
- Flexible and low-porous.
- Very easy to work and trowel.
- For hand and machine application.
- Microfibre reinforced.

| Product name       | Grain [mm] | Finition             | Average material consumption per 1m <sup>2</sup> [kg/m <sup>2</sup> ] | Unit of Measure [kg] |
|--------------------|------------|----------------------|---|----------------------|
| <b>SOLTHERM TR</b> | ca. 0,5    | Depending on texture | ca. 1.75<br>(per each 1mm of thickness)                               | 25                   |

## SOLTHERM DECO SANDSTONE AND GRANITE FINISH RENDER



- For hand and machine application.
- Excellent resistance to abrasion and mechanical damage.
- Ensures increased resistance to algal and fungal growth as well as weather conditions.
- Component of the SOLTHERM systems with EPS and mineral wool.
- Natural stone effect.

| Product name                       | Grain [mm]  | Structure | Average material consumption per 1m <sup>2</sup> [kg/m <sup>2</sup> ] | Unit of Measure [kg] |
|------------------------------------|-------------|-----------|---|----------------------|
| <b>SOLTHERM DECO<sub>ST</sub></b>  | ca. 0,5-1.0 | sandstone | 2.8 - 3.5   | 25                   |
| <b>SOLTHERM DECO<sub>AM</sub>*</b> | ca. 0,5-2.0 | granite   | 3.8 - 4.5   |                      |

\* only machine application

## SOLTHERM DECO<sub>BM</sub> EXTERNAL DECORATIVE RENDER WITHOUT MICA PARTICLES



- 34 attractive patterns.
- High resistance to mechanical damage and UV radiation.
- Increased resistance to algal and fungal growth as well as weather conditions.
- Component of the SOLTHERM systems with EPS and mineral wool.

| Product name                       | Grain [mm] | Structure | Average material consumption per 1m <sup>2</sup> [kg/m <sup>2</sup> ] | Unit of Measure [kg] |
|------------------------------------|------------|-----------|---|----------------------|
| <b>SOLTHERM DECO<sub>BM</sub>*</b> | ca. 0,5    | sandstone | 2.5 - 3.5   | 25                   |

\* only hand application

## SOLTHERM METALLIC POINT DECORATIVE EFFECT METALLIC PAINT



- Provides a metallic gloss finish.
- Produces a robust and reliable weather resistant coating.
- Resistant to washing and wet scrubbing.
- Stable, lasting and attractive colours.

| Product name                   | Color                 | Average material consumption per 1m <sup>2</sup> [l/m <sup>2</sup> ] | Unit of Measure [l] |
|--------------------------------|-----------------------|--|---------------------|
| <b>SOLTHERM METALLIC POINT</b> | or, cuivre,<br>argent | 0.30 - 0.40  | 3                   |

## SOLTHERM WS WHITE MINERAL RENDER FOR WOOD EFFECT



- Frost and water resistant.
- Water vapour permeable.
- Easy to prepare, work and apply.
- Water repellent.
- Microfibre reinforced.
- Fine grain size.
- White cement based.

| Product name       | Average material consumption per 1m <sup>2</sup> [kg/m <sup>2</sup> ] | Unit of Measure [kg] |
|--------------------|---|----------------------|
| <b>SOLTHERM WS</b> | approx. 1.50<br>(per each 1mm of thickness)                           | 25                   |

## SOLTHERM GMP EXTERIOR ACRYLIC JOINT COMPOUND



- Enables creation of endless textures and patterns.
- Provides increased resistance to algal and fungal growth as well as weather conditions.
- Flexible and low-porous.
- High colour stability.
- Very easy to work and trowel.
- For hand and machine application.

| Product name        | Average material consumption per 1m <sup>2</sup> [kg/m <sup>2</sup> ] | Unit of Measure [kg] |
|---------------------|---|----------------------|
| <b>SOLTHERM GMP</b> | 0.80-1.20<br>(per each 1mm of thickness)                              | 25                   |



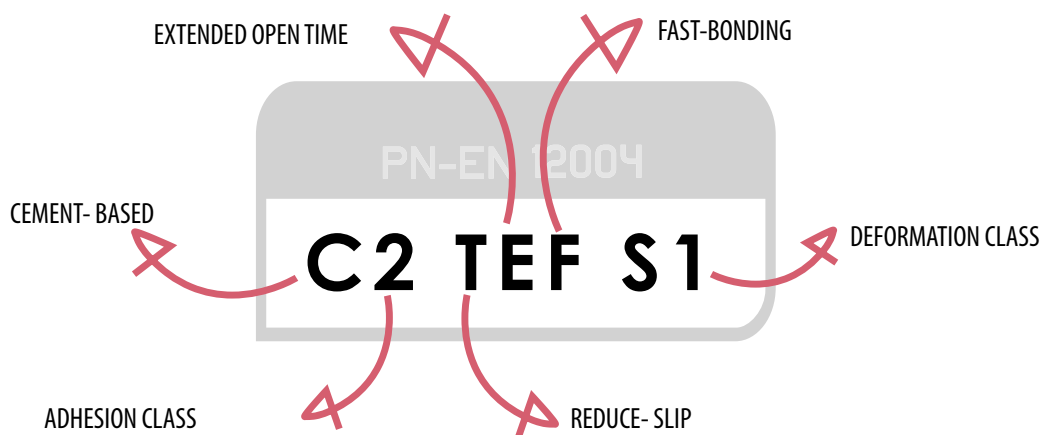
# INSTALLATION PRODUCTS FOR CERAMICS AND STONE





# COMPARISON OF CERAMIC TILE ADHESIVES

| PRODUCTS FOR CERAMICS AND NATURAL STONE |  | BOLIX B | BOLIX P | BOLIX P WHITE | BOLIX PE | BOLIX E | BOLIX ES | SOLTHERM SE |
|---|--|---------|---------|---------------|----------|---------|----------|-------------|
| PROPERTIES                              | SLIP RESISTANCE  | ✓       | ✓       | ✓             | ✓        | ✓       | ✓        | ✓           |
|   | IMPROVED SUBSTRATE ADHESION  | ✗       | ✓       | ✓             | ✓        | ✓       | ✓        | ✓           |
|   | EXTENDED WORKING TIME  | ✗       | ✗       | ✗             | ✗        | ✓       | ✓        | ✓           |
|   | QUICK HARDENING  | ✗       | ✗       | ✗             | ✗        | ✗       | ✓        | ✗           |
|   | HIGH FLEXIBILITY   | ✗       | ✗       | ✗             | ✗        | ✗       | ✗        | ✓           |
| DESTINATION                             | TO INSTALL CERAMIC/STONE TILES AS PART OF EWI SYSTEMS WITH EPS AS INSULATION MATERIAL              | ✗       | ✗       | ✗             | ✗        | ✓       | ✗        | ✓           |
|   | FOR WET ROOMS  | ✓       | ✓       | ✓             | ✓        | ✓       | ✓        | ✓           |
|   | TILE ADHESIVE (2 ÷ 10 MM)  | ✓       | ✓       | ✓             | ✓        | ✓       | ✓        | ✓           |
|   | TILE ADHESIVE (2 ÷ 15 MM)  | ✗       | ✗       | ✗             | ✗        | ✗       | ✗        | ✗           |
|   | HEAVY LOAD SURFACES SUCH AS A GARAGES, WORKSHOPS, INDUSTRIAL FLOORS, HALLS, CORRIDORS, PASSAGEWAYS | ✗       | ✓       | ✓             | ✗        | ✓       | ✓        | ✓           |
|   | FOR WALLS AND CEILINGS   | ✓       | ✓       | ✓             | ✓        | ✓       | ✓        | ✓           |
|   | FOR TERRACES, BALCONIES AND LOGGIAS  | ✗       | ✗       | ✗             | ✗        | ✓       | ✓        | ✓           |
|   | FOR INTERIOR AND EXTERIOR USE  | ✓       | ✓       | ✓             | ✓        | ✓       | ✓        | ✓           |
|   | LEVELLING COMPOUND   | ✓       | ✓       | ✓             | ✓        | ✓       | ✓        | ✓           |
|   | FOR BEDDING GLASS BLOCKS   | ✗       | ✗       | ✓             | ✗        | ✗       | ✗        | ✗           |



## ADHESIVES, GROUTS AND OTHER PRODUCTS FOR CERAMICS AND NATURAL STONE

### BOLIX B BASE ADHESIVE FOR CERAMICS



- Reduced slump (T) - enables tiling from up to down.
- Frost resistant.

- For firm, non-deformable substrates.
- Suitable for waterproof membranes (undertile waterproofing) in damp interiors.

| Product name   | Average material consumption per 1m <sup>2</sup> [kg/m <sup>2</sup> ] | Unit of Measure [kg] |
|----------------|---|----------------------|
| <b>BOLIX B</b> | ca. 1.5<br>(per each 1 mm of thickness)                               | 25                   |

# ADHESIVES, GROUTS AND OTHER PRODUCTS FOR CERAMICS AND NATURAL STONE

## BOLIX P

### ADHESIVE FOR STONEWARE, BRICKWORK, AND STONE CLADDING



- Improved adhesion (C2) to the substrate.
- Reduced slump (T) - enables tiling from up to down.
- Frost resistant.

- Suitable for waterproof membranes (undertile waterproofing) in damp interiors.
- For installation of porcelain, quarry and stone tiles in heavy traffic areas.

| Product name   | Average material consumption per 1m <sup>2</sup> [kg/m <sup>2</sup> ] | Unit of Measure [kg] |
|----------------|---|----------------------|
| <b>BOLIX P</b> | ca. 1.5<br>(per each 1 mm of thickness)                               | 25                   |

## BOLIX P WHITE

### WHITE ADHESIVE FOR MARBLE, STONE CLADDING AND FOR BEDDING GLASS BLOCKS



- Improved adhesion (C2) to the substrate.
- Reduced slump (T) - enables tiling from up to down.
- Frost resistant.
- Suitable for waterproof membranes (undertile waterproofing) in damp interiors.

- Suitable for waterproof membranes (undertile waterproofing) in damp interiors.
- For installation of porcelain, quarry and stone tiles in heavy traffic areas.

| Product name         | Average material consumption per 1m <sup>2</sup> [kg/m <sup>2</sup> ] | Unit of Measure [kg] |
|----------------------|---|----------------------|
| <b>BOLIX P WHITE</b> | ca. 1.5<br>(per each 1 mm of thickness)                               | 25                   |

## BOLIX PE

### SEMI-ELASTIC ADHESIVE MORTAR FOR STONEWARE AND BRICKWORK



- Improved adhesion (C2) to the substrate.
- Reduced slump (T) - enables tiling from up to down.

- Frost resistant.
- Dedicated for moisture sensitive natural stone.

| Product name    | Average material consumption per 1m <sup>2</sup> [kg/m <sup>2</sup> ] | Unit of Measure [kg] |
|-----------------|---|----------------------|
| <b>BOLIX PE</b> | ca. 1.5<br>(per each 1 mm of thickness)                               | 25                   |

## BOLIX E

### ELASTIC CEMENTITIOUS ADHESIVE



- Formulated for large format tiles.
- Improved adhesion (C2) to the substrate.
- Extended open time (E).

- Frost resistant.
- Can be applied over deformable substrates including underfloor heating and drywall.

| Product name   | Average material consumption per 1m <sup>2</sup> [kg/m <sup>2</sup> ] | Unit of Measure [kg] |
|----------------|---|----------------------|
| <b>BOLIX E</b> | ca. 1.3<br>(per each 1 mm of thickness)                               | 25                   |

## SOLTHERM SE

### SUPER ELASTIC CEMENTITIOUS ADHESIVE



- Improved adhesion (C2) to the substrate.
- Extended open time (E).
- Extreme flexibility (S1) - shrinkage compensating, accommodates and compensates for thermal and mechanical stress.

- Suitable for poor key quality surfaces including drywall, OSB, tile on tile installation.
- Frost resistant.
- Formulated for large format tiles.

| Product name       | Average material consumption per 1m <sup>2</sup> [kg/m <sup>2</sup> ] | Unit of Measure [kg] |
|--------------------|---|----------------------|
| <b>SOLTHERM SE</b> | ca. 1.2<br>(per each 1 mm of thickness)                               | 25                   |

# ADHESIVES, GROUTS AND OTHER PRODUCTS FOR CERAMICS AND NATURAL STONE

## SOLTHERM SE WHITE

### SUPER FLEXIBLE DEFORMABLE WHITE ADHESIVE FOR CERAMIC TILES AND MARBLE



- Dedicated for moisture sensitive natural stone, including marble.
- Improved adhesion (C2) to the substrate.
- Reduced slump (T) - enables tiling from up to down.
- Extended open time (E).

- Suitable for poor key quality surfaces including drywall, OSB, tile on tile installation.
- Frost resistant.
- Formulated for large format tiles.

| Product name             | Average material consumption per 1m <sup>2</sup> [kg/m <sup>2</sup> ] | Unit of Measure [kg] |
|--------------------------|---|----------------------|
| <b>SOLTHERM SE WHITE</b> | ca. 1.2<br>(per each 1 mm of thickness)                               | 25                   |

## BOLIX BK

### STONE GROUT



- Water absorption.

- Frost resistant.

| Product name      | Color         | Average material consumption per 1m <sup>2</sup> [kg/m <sup>2</sup> ] | Unit of Measure [kg] |
|-------------------|---------------|---|----------------------|
| <b>BOLIX BK**</b> | gray<br>white | Will vary with the joint width and the size of the grouted elements   | 25                   |



# ADHESIVES, GROUTS AND OTHER PRODUCTS FOR CERAMICS AND NATURAL STONE

## BOLIX HYDRO

### WATERPROOFING MEMBRANE



- Super flexible, jointless and seamless.
- Watertight.
- Does not contain solvents.

- Suitable for underfloor heating.
- Crack filling properties.

| Product name       | Average material consumption per 1m <sup>2</sup> [kg/m <sup>2</sup> ] | Unit of Measure [kg] |
|--------------------|---|----------------------|
| <b>BOLIX HYDRO</b> |   | 14                   |
|                    | 1.3 - 2.0   | 7                    |
|                    |   | 4                    |

## BOLIX HYDRO-T

### SEALING TAPE



- Watertight.
- Flexible.
- High tensile strength.

- Resistant to aging.
- Easy to apply.
- Suitable for underfloor heating.

| Product name         | Unit of Measure [mb] |
|----------------------|----------------------|
| <b>BOLIX HYDRO-T</b> | 10                   |
|                      | 50                   |

| Product name   | Unit of Measure [complete.] |
|--|-----------------------------|
| <b>BOLIX HYDRO-T 90Z</b><br><b>BOLIX HYDRO-T 90W</b> | 25                          |

## BOLIX AQUASTOP

### TILE GROUT WITH WATER BEADING EFFECT

JOINT WIDTH 2- 6 mm



- High performance cementitious mortar (CG2).
- Low water absorption (W).
- High scrub resistance (A).

- Frost-resistant, flexible and low absorbent (water beading effect).
- Increased resistance to cracking, algal and fungal growth.

| Product name          | Color  | Average material consumption per 1m <sup>2</sup> [kg/m <sup>2</sup> ] | Unit of Measure [kg] |
|-----------------------|--|---|----------------------|
| <b>BOLIX AQUASTOP</b> | white, gray  |   | 2<br>5               |
|                       | brown  |   | 2<br>5               |
|                       | dark brown<br>beige, grey,<br>dark grey,<br>light brown, | 0.3 - 1.2<br>(depending on joint width and depth and tile size)       | 2<br>5<br>20         |
|                       | pewter   |   | 2<br>5<br>20         |

## SOLTHERM AQUASTOP

### CEMENTITIOUS POINTING MORTAR

JOINT WIDTH 5- 15 mm



- High flexibility.
- Increased resistance to algal and fungal growth.
- Water repellent - water beading effect.

- Stable colours without salts.
- Component of the insulation system with EPS and mineral wool as insulating material, finished with ceramic tiles, natural stone and brick slips.

| Product name             | Color  | Average material consumption per 1m <sup>2</sup> [kg/m <sup>2</sup> ] | Unit of Measure [kg] |
|--------------------------|--|---|----------------------|
| <b>SOLTHERM AQUASTOP</b> | graphite grey, grey, dark grey,<br>brown, dark brown,<br>anthracite, white | (depending on joint width and depth and tile size)                    | 20                   |



# INTERIOR PAINTS



# COMPARISON OF THE INTERIOR PAINTS (INSIDE)



| INTERIOR PAINTS                  |   | BOLIX SONATA ACRYL WHITE   | BOLIX ACORD ACRYL PERFECT  | BOLIX POLITONE PLUS        | BOLIX CAMERTONE LATEX MATT | BOLIX CAMERTONE LATEX SATIN | BOLIX HARMONIC SILICATE    | BOLIX PROCARE AG+          |
|----------------------------------|---|----------------------------|----------------------------|----------------------------|----------------------------|-----------------------------|----------------------------|----------------------------|
| PROPERTIES                       | COLORS  | SNOW WHITE                 | 918 COLORS                 | WHITE 876 COLORS           | WHITE 876 COLORS           | 1043 COLORS                 | 70 COLORS                  | 180 COLORS                 |
|                                  | GLOSS LEVEL                                       | MAT                        | DEEP MAT                   | DEEP MAT                   | DEEP MAT                   | SATIN / GLOSS               | DEEP MAT                   | MAT / SILK                 |
|                                  | RESISTANCE TO WET SCRUBBING (ACC. TO PN-EN 13300) | CLASS 4                    | CLASS 2                    | CLASS 2                    | CLASS 1                    | CLASS 1                     | CLASS 2                    | CLASS 1                    |
|                                  | OPACITY (ACC. TO PN-EN 13300)                     | CLASS 1                    | CLASS 1                    | CLASS 1                    | CLASS 1                    | CLASS 1                     | CLASS 1                    | CLASS 1                    |
|                                  | CONCRETE SUBSTRATES                               | Up to 12 m <sup>2</sup> /l | Up to 12 m <sup>2</sup> /l | Up to 13 m <sup>2</sup> /l | Up to 14 m <sup>2</sup> /l | Up to 14 m <sup>2</sup> /l  | Up to 12 m <sup>2</sup> /l | Up to 14 m <sup>2</sup> /l |
| AREA OF APPLICATION              | CEILINGS  | ● ● ●                      | ● ●                        | ● ●                        | ● ●                        | ● ●                         | ● ●                        | ● ●                        |
|                                  | BEDROOMS  | ● ●                        | ● ● ●                      | ● ●                        | ● ● ●                      | ● ●                         | ● ●                        | ● ● ●                      |
|                                  | LIVING ROOMS                                      | ● ●                        | ● ● ●                      | ● ●                        | ● ● ●                      | ● ● ●                       | ● ● ●                      | ● ● ●                      |
|                                  | COLOURS   | ● ●                        | ● ●                        | ● ●                        | ● ● ●                      | ● ● ●                       | ● ●                        | ● ● ●                      |
|                                  | OFFICES   | ● ●                        | ● ●                        | ● ● ●                      | ● ● ●                      | ● ● ●                       | ● ●                        | ● ● ●                      |
|                                  | SCHOOLS AND PUBLIC BUILDINGS                      | ● ●                        | ● ●                        | ● ●                        | ● ● ●                      | ● ● ●                       | ● ●                        | ● ● ●                      |
|                                  | KITCHENS  | ● ●                        | ● ●                        | ● ● ●                      | ● ●                        | ● ● ●                       | ● ●                        | ● ● ●                      |
|                                  | BATHROOMS   | ● ●                        | ● ●                        | ● ● ●                      | ● ●                        | ● ● ●                       | ● ●                        | ● ● ●                      |
|                                  | DEVELOPER'S STANDARD PAINT COATING                | ● ●                        | ● ●                        | ● ●                        | ● ●                        | ● ●                         | ● ●                        | ● ●                        |
|                                  | REPAINTING  | ● ●                        | ● ● ●                      | ● ●                        | ● ● ●                      | ● ● ●                       | ● ●                        | ● ● ●                      |
| OPERATING THEATRES, LABORATORIES | —   | —                          | —                          | —                          | —                          | —                           | ● ● ●                      |                            |
| SURFACE                          | CEMENT PLASTERS                                   | ✓                          | ✓                          | ✓                          | ✓                          | ✓                           | ✓                          | ✓                          |
|                                  | GYPSUM PLASTERS                                   | ✓                          | ✓                          | ✓                          | ✓                          | ✓                           | ✓                          | ✓                          |
|                                  | PLASTERBOARDS                                     | ✓                          | ✓                          | ✓                          | ✓                          | ✓                           | ✓                          | ✓                          |
|                                  | CONCRETE BRACKETS                                 | ✓                          | ✓                          | ✓                          | ✓                          | ✓                           | ✓                          | ✓                          |
|                                  | STONE   | ✓                          | ✓                          | ✓                          | ✓                          | ✓                           | ✓                          | ✓                          |
|                                  | BRICK   | ✓                          | ✓                          | ✓                          | ✓                          | ✓                           | ✓                          | ✓                          |
|                                  | TIMBER  | ✓                          | ✓                          | ✓                          | ✓                          | ✓                           | ✗                          | ✓                          |
|                                  | WALLPAPER   | ✗                          | ✗                          | ✓                          | ✓                          | ✓                           | ✓                          | ✓                          |
|                                  | FIBREGLASS WALLPAPER                              | ✗                          | ✗                          | ✓                          | ✓                          | ✓                           | ✓                          | ✓                          |

# INTERIOR PAINTS

RECOMMENDED PRIMER: BOLIX ACTIVE GRUNT LATEX

## BOLIX SONATA ACRYL WHITE

## BOLIX SONATA ACRYL WHITE SUPER WHITE ACRYLIC PAINT FOR CEILINGS

- Hiding power – CLASS 1.
- Resistance to wet scrubbing – CLASS 2.

- Super white.
- Meets the requirements for the permissible VOC content.



| Product name                    | Coverage for one coat application [m <sup>2</sup> /l] | Unit of Measure [l] |
|---------------------------------|---|---------------------|
| <b>BOLIX SONATA ACRYL WHITE</b> | Up to 12  | 10<br>5             |

RECOMMENDED PRIMER: BOLIX ACTIVE GRUNT LATEX

## BOLIX ACORD ACRYL PERFECT

## INTERIOR PAINTS ACRYLIC

- Hiding power – CLASS 1.
- Resistance to wet scrubbing – CLASS 2.

- Stable and attractive colours.
- Meets the requirements for the permissible VOC content.



| Product name                     | Color                | Coverage for one coat application [m <sup>2</sup> /l] | Unit of Measure [l] |
|----------------------------------|----------------------|---|---------------------|
| <b>BOLIX ACORD ACRYL PERFECT</b> | base<br>(00, 20, 30) | Up to 12  | 18                  |
|                                  |                      |   | 10                  |
|                                  |                      |   | 5                   |
|                                  |                      |   | 2.5                 |

RECOMMENDED PRIMER: BOLIX ACTIVE GRUNT LATEX

## BOLIX POLITONE PLUS

## LATEX PAINT FOR WALLS AND CEILINGS

- Hiding power – CLASS 1.
- Resistance to wet scrubbing – CLASS 2.
- Deep matt finish without reflections.

- Thixotropic - non-drip paint, easy to apply.
- Stable and attractive colours.
- Meets the requirements for the permissible VOC content.



| Product name               | Color | Coverage for one coat application [m <sup>2</sup> /l] | Unit of Measure [l] |
|----------------------------|-------|---|---------------------|
| <b>BOLIX POLITONE PLUS</b> | white | Up to 13  | 18                  |
|                            |       |   | 10                  |
|                            |       |   | 5                   |
|                            | basic |   | 18                  |
|                            |       |   | 10                  |
|                            |       |   | 5                   |

RECOMMENDED PRIMER: BBOLIX SG-W

## BOLIX CAMERTONE LATEX SATIN

## SATIN LATEX PAINT FOR WALL AND CEILINGS

- Hiding power – CLASS 1.
- Resistance to wet scrubbing – CLASS 1.
- Hypo-allergenic.

- Stable and attractive colours.
- Meets the requirements for the permissible VOC content.



| Product name                       | Color         | Coverage for one coat application [m <sup>2</sup> /l] | Unit of Measure [l] |
|------------------------------------|---------------|---|---------------------|
| <b>BOLIX CamertOne LATEX SATIN</b> | BASIC PAINT00 | Up to 14  | 10                  |
|                                    | BASIC PAINT30 |   |                     |
|                                    | BASIC PAINT00 |   | 2.5                 |
|                                    | BASIC PAINT30 |   |                     |

## BOLIX CAMERTONE LATEX MATT

## MATT LATEX PAINT FOR WALL AND CEILINGS

- Hiding power – CLASS 1.
- Resistance to wet scrubbing – CLASS 1.
- Deep matt finish without reflections.
- Hypo-allergenic.
- Stable and attractive colours.
- Meets the requirements for the permissible VOC content.



| Product name                      | Color | Coverage for one coat application [m <sup>2</sup> /l] | Unit of Measure [l] |
|-----------------------------------|-------|---|---------------------|
| <b>BOLIX CAMERTONE LATEX MATT</b> | white | Up to 14  | 18                  |
|                                   |       |   | 10                  |
|                                   |       |   | 5                   |
|                                   | basic |   | 2.5                 |
|                                   |       |   | 18                  |
|                                   |       |   | 10                  |
|                                   |       | 5   |                     |
|                                   |       | 2.5   |                     |

## BOLIX HARMONIC SILICATE

## POLY-SILICATE INTERIOR PAINT

- Hiding power – CLASS 1.
- Resistance to wet scrubbing – CLASS 2.
- Low alkaline.
- Deep matt finish without reflections.
- Thixotropic - non-drip paint, easy to apply.
- Meets the requirements for the permissible VOC content.
- Hypo-allergenic.



| Product name                   | Coverage for one coat application [m <sup>2</sup> /l] | Unit of Measure [l] |
|--------------------------------|---|---------------------|
| <b>BOLIX HARMONIC SILICATE</b> | Up to 12  | 10                  |
|                                |   | 5                   |

## BOLIX PROCARE Ag+

## LATEX PAINT WITH SILVER IONS

- High resistance to bacteria growth.
- Auto-sterile.
- Hiding power – CLASS 1.
- Resistance to wet scrubbing – CLASS 1.
- Thixotropic - non-drip paint, easy to apply.
- High coverage - up to 14 m<sup>2</sup> per 1 litre of paint for a single application.
- Meets the requirements for the permissible VOC content.
- Resistant to washing with popular disinfectants used in hospitals.



| Product name             | Coverage for one coat application [m <sup>2</sup> /l] | Unit of Measure [l] |
|--------------------------|---|---------------------|
| <b>BOLIX PROCARE Ag+</b> | Up to 14  | 10                  |

## BOLIX PRESTO ACRYL

## PRE-MIX ACRYLIC SKIM COAT

- Reduces and equalizes surface porosity.
- Seals off and strengthens the substrate.



| Product name              | Average material consumption per 1m <sup>2</sup> [kg/m <sup>2</sup> ] | Unit of Measure [kg] |
|---------------------------|---|----------------------|
| <b>BOLIX PRESTO ACRYL</b> | ca. 1.5 (per 1 mm of coat thickness)                                  | 19                   |



## BOLIX AC3 MATT LATEX PAINT FOR WALL AND CEILINGS



- Hybrid paint based on a selected composition of binders which facilitate - paint without splashing.
- Hiding power - CLASS 1.
- Water soluble and odorless.

- Deep matt finish without reflections.
- High coverage - up to 13 m<sup>2</sup> per 1 litre of paint for a single application.
- Lasting and attractive colours.

| Product name     | Color | Coverage for one coat application [m <sup>2</sup> /l] | Unit of Measure [l] |
|------------------|-------|---|---------------------|
| <b>BOLIX AC3</b> | NCS   | Up to 13  | 4,75<br>9,5         |

## BOLIX ACS CERAMIC PAINT FOR WALL AND CEILINGS



- Hybrid paint based on a selected composition of binders which facilitate - paint without splashing.
- High resistance to wet rubbing - CLASS 1.
- Hiding power - CLASS 1.

- Water soluble and odorless.
- High resistant matt coating.
- High coverage - up to 14 m<sup>2</sup> per 1 litre of paint for a single application.
- Lasting and attractive colours.

| Product name     | Color | Coverage for one coat application [m <sup>2</sup> /l] | Unit of Measure [l] |
|------------------|-------|---|---------------------|
| <b>BOLIX ACS</b> | NCS   | Up to 14  | 4,75<br>9,5         |

## BOLIX AC7 HIGH OPACITY



- Hybrid paint based on a selected composition of binders which facilitate - paint without splashing.
- High resistance to wet rubbing - CLASS 1.
- Hiding power - CLASS 1.

- Water soluble and odorless.
- High coverage - up to 14 m<sup>2</sup> per 1 litre of paint for a single application.
- Lasting and attractive colours NCS.
- Vapor permeable.

| Product name     | Color | Coverage for one coat application [m <sup>2</sup> /l] | Unit of Measure [l] |
|------------------|-------|---|---------------------|
| <b>BOLIX AC7</b> | NCS   | Up to 14  | 4,75<br>9,5         |

# PRIMER

## BOLIX ACTIVE GRUNT LATEX

## HIDING PRIMER



- Reduces and equalizes surface porosity.
- Seals off and strengthens the substrate.

- Increases the coverage of BOLIX interior paints.
- Facilitates paint application.

| Product name                    | Coverage for one coat application [m <sup>2</sup> /l] | Unit of Measure [l] |
|---------------------------------|---|---------------------|
| <b>BOLIX ACTIVE GRUNT LATEX</b> | Up to 10  | 10<br>5             |

## BOLIX SG-W



- Reduces and equalizes surface porosity.
- Seals off and strengthens the substrate.

| Product name      | Average material consumption per m <sup>2</sup> /kg | Unit of Measure [kg] |
|-------------------|---|----------------------|
| <b>BOLIX SG-W</b> | Up to 4.00  | 10                   |



# PRODUCTS **FOR TERRACES,** **LOGGIAS AND BALCONIES**



# PRODUCTS FOR TERRACES, LOGGIAS AND BALCONIES

## BOLIX AKO

### ONE COMPONENT MINERAL CORROSION INHIBITOR FOR STEEL REINFORCEMENT



- Excellent adhesion to steel.
- Contains corrosion inhibitors - inhibits the corrosion of reinforcement bars.

- Easy to apply.

| Product name     | Average material consumption per [g/m]                | Unit of Measure [kg] |
|------------------|---|----------------------|
| <b>BOLIX AKO</b> | Material coverage for two coat application is ca. 150 | 5                    |

## BOLIX SCS

### MINERAL BOND COAT TO RECEIVE THE REPAIR MORTAR BOLIX WB



- Excellent adhesion to concrete.
- Easy to apply.

- Low linear shrinkage.

| Product name     | Average material consumption per 1m <sup>2</sup> [kg/m <sup>2</sup> ] | Unit of Measure [kg] |
|------------------|---|----------------------|
| <b>BOLIX SCS</b> | ca. 1.5 - 2.5   | 25                   |

## BOLIX WB

### UNIVERSAL WINTER BASE COAT AND ADHESIVE FOR EMBEDDING MESH AND INSTALLATION OF INSULATION BOARDS



- Compressive strength  $\geq 40$  MPa.
- Excellent adhesion to concrete.
- Fast-drying.
- Frost resistant.

- Fibre reinforced.
- Low linear shrinkage.

| Product name    | Average material consumption per 1m <sup>2</sup> [kg/m <sup>2</sup> ] | Unit of Measure [kg] |
|-----------------|---|----------------------|
| <b>BOLIX WB</b> | ca. 1.9<br>(per each 1 mm of thickness)                               | 25                   |

## BOLIX SPN

### CEMENT REPAIR COMPOUND UP TO 5 MM



- Excellent adhesion to concrete.
- Compressive strength  $\geq 25$  MPa.
- Fast-drying.

- Frost resistant.
- Low linear shrinkage.

| Product name     | Average material consumption per 1m <sup>2</sup> [kg/m <sup>2</sup> ] | Unit of Measure [kg] |
|------------------|---|----------------------|
| <b>BOLIX SPN</b> | ca. 1,6<br>(per each 1 mm of thickness)                               | 25                   |

## BOLIX HYDRO DUO

### TWO COMPONENT WATERPROOFING COMPOUND



- Fibre reinforced.
- Highly flexible.
- Crack filling properties.
- Watertight.
- Water vapour permeable.

- Frost resistant when set.
- No priming necessary.
- Does not contain solvents.
- For interior and exterior use.
- Formulated for walls and floors, including over underfloor heating, on balconies, loggias and terraces.

| Product name           | Average material consumption per 1m <sup>2</sup> [kg/m <sup>2</sup> ]  | Unit of Measure [kg] |
|------------------------|--|----------------------|
| <b>BOLIX HYDRO DUO</b> | 3,4 - 5,1<br>(for two coat application over properly prepared surface) | 25 + 8,3             |

# PRODUCTS FOR TERRACES, LOGGIAS AND BALCONIES

## BOLIX PC-B FAST-SETTING CEMENT SCREED



- Fast-hardening.
- High compressive strength  $\geq 40$  MPa.
- Frost resistant when set.
- Foot traffic after min.3h.

- For hand application or with a screed pump.
- Low linear shrinkage.
- Suitable for underfloor heating.

| Product name      | Average material consumption per 1m <sup>2</sup> [kg/m <sup>2</sup> ] | Unit of Measure [kg] |
|-------------------|---|----------------------|
| <b>BOLIX PC-B</b> | ca. 2.0<br>(per each 1 mm of thickness)                               | 25                   |

EN 13813  
CT-C40-F6

## BOLIX PC-S THIN FAST-SETTING CEMENT SCREED



- High compressive strength  $\geq 30$  MPa.
- Frost resistant when set.
- Foot traffic after min.5h.

- Low linear shrinkage.
- Fibre reinforced.

| Product name      | Average material consumption per 1m <sup>2</sup> [kg/m <sup>2</sup> ] | Unit of Measure [kg] |
|-------------------|---|----------------------|
| <b>BOLIX PC-S</b> | ca. 2.0<br>(per each 1 mm of thickness)                               | 25                   |

EN 13813  
CT-C25-F4

## BOLIX PC CEMENT SCREEDS



- Frost resistant when set.
- Can be hand or machine applied.

- Low linear shrinkage.
- Suitable for underfloor heating.

| Product name    | Average material consumption per 1m <sup>2</sup> [kg/m <sup>2</sup> ] | Unit of Measure [kg] |
|-----------------|---|----------------------|
| <b>BOLIX PC</b> | ca. 2.2<br>(per each 1 mm of thickness)                               | 25                   |

EN 13813  
CT-C25-F4

## BOLIX EK



- Provides a key and promotes adhesion of selected BOLIX cement screeds to the substrate
- Resistant to high pH.

- Easy to work and apply.
- Concentrated.

| Product name    | Average material consumption per 1m <sup>2</sup> [kg/m <sup>2</sup> ]                              | Unit of Measure [kg] |
|-----------------|--|----------------------|
| <b>BOLIX EK</b> | ca. 0.12<br>BOLIX EK/water 1:2 for BOLIX PC-B<br>ca. 0.18<br>BOLIX EK/water 1:1 for BOLIX PC-S, PC | 5*<br>10             |

## BOLIX GS TWO PART POLYURETHANE BONDING PRIMER FOR WATERPROOFING COMPOUNDS



- Provides a key, promotes adhesion of BOLIX waterproofing to metal surfaces.
- Highly flexible.
- Solvant free.

- Frost resistant.
- Colorless.
- High-coverage.

| Product name    | Average material consumption per 1m <sup>2</sup> [kg/m <sup>2</sup> ] | Unit of Measure [kg] |
|-----------------|---|----------------------|
| <b>BOLIX GS</b> | 100 ml where a 8 cm strip is covered                                  | 1                    |

## BOLIX SPK DRIED QUARTZ SAND WITH GRAIN SIZE



- Supplementary product for the bond coat BOLIX GS.
- Provides a key for subsequent coats.

| Product name     | Average material consumption per 1m <sup>2</sup> [kg/m <sup>2</sup> ] | Unit of Measure [kg] |
|------------------|---|----------------------|
| <b>BOLIX SPK</b> | -   | 25                   |

# PRODUCTS FOR TERRACES, LOGGIAS AND BALCONIES

## BOLIX HYDRO-TW SEALING TAPE



- Watertight.
- Flexible.
- High tensile strength.
- Resistant to aging.
- Alkali-resistant.
- Easy to apply.
- Suitable for underfloor heating.

| Product name   | Unit of Measure [mb] |
|--|----------------------|
| <b>BOLIX HYDRO-TW</b>                                  | 10<br>50             |
| Product name   | Unit of Measure [mb] |
| <b>BOLIX HYDRO-TW 90Z</b><br><b>BOLIX HYDRO-TW 90W</b> | 25                   |

## BOLIX HYDRO-TBS SELF-ADHESIVE BUTYL TAPE



- Self-adhesive.
- Watertight.
- Flexible and deformable.
- Alkali-resistant.
- Fleece backed.
- Excellent adhesion to most of building materials including PVC, stainless steel and aluminium.

| Product name           | Unit of Measure [mb] |
|------------------------|----------------------|
| <b>BOLIX HYDRO-TBS</b> | 10                   |

## BOLIX HYDRO-MB SEALING TAPE FOR WINDOW AND DOOR SILLS PERFORATED ON ONE SIDE AND WITH BUTYL STRIP



- For sealing around windows and doors.
- Self-adhesive.
- Watertight.
- Flexible and deformable.
- Alkali-resistant.
- Easy to apply.
- Perforated on one side to increase adhesion and speed up drying of waterproofing compounds.
- Butyl strip that provide high adhesion to most of building materials, including PVC, stainless steel, aluminium.

| Product name          | Unit of Measure [mb] |
|-----------------------|----------------------|
| <b>BOLIX HYDRO-MB</b> | 10                   |

## BOLIX SD



- Backing for sealants to reduce their consumption.
- Easy to install.
- Flexible.
- Waterproof.

| Product name    | Coat thickness [mm] | Unit of Measure [mb] |
|-----------------|---------------------|----------------------|
| <b>BOLIX SD</b> | 6                   | 10                   |
|                 | 6                   | 50                   |
|                 | 8                   | 10                   |
|                 | 8                   | 50                   |

## BOLIX MTCU FC

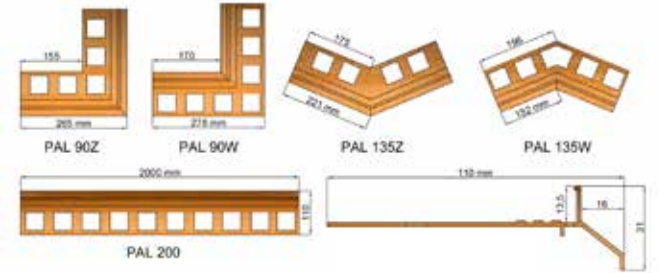


- Permanently elastic in a wide range of colours.
- Excellent resistance to ageing and changing weather conditions.
- Very low water absorption.
- High resistance to scrubbing.

| Product name         | Color       | Average material consumption per   | Unit of Measure [mb] |
|----------------------|-------------|------------------------------------|----------------------|
| <b>BOLIX MTCU FC</b> | gray, brown | Depending on joint depth and width | 300                  |

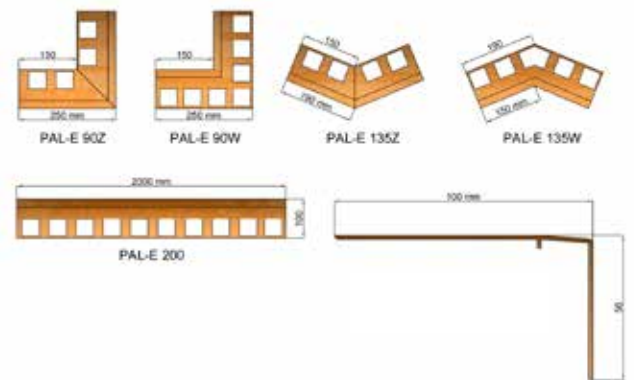
# BALCONY PROFILES

## PROFILE BOLIX PAL



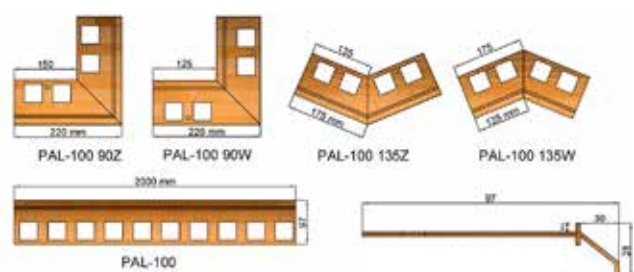
| PRODUITS            | Product name                              | Unit of measure |
|---------------------|---|-----------------|
| 1. END STOP         | <b>BOLIX PAL-F complete (left, right)</b> | kit             |
| 2. STRAIGHT PROFILE | <b>BOLIX PAL 200 (length 2.0 m)</b>       | complete        |
| 3. SPLICE           | <b>BOLIX PAL-C</b>                        | complete        |
| 4. OUTSIDE CORNER   | <b>BOLIX PAL 90Z / 135Z</b>               | complete        |
| 4. INSIDE CORNER    | <b>BOLIX PAL 90W / 135W</b>               | complete        |

## PROFILE BOLIX PAL-E



| PRODUITS            | Product name                               | Unit of measure |
|---------------------|--|-----------------|
| 1. END STOP         | <b>BOLIX PAL-EF complete (left, right)</b> | kit             |
| 2. STRAIGHT PROFILE | <b>BOLIX PAL-E 200 (length 2.0 m)</b>      | complete        |
| 3. SPLICE           | <b>BOLIX PAL-EC</b>                        | complete        |
| 4. OUTSIDE CORNER   | <b>BOLIX PAL-E 90Z / 135Z</b>              | complete        |
| 4. INSIDE CORNER    | <b>BOLIX PAL-E 90W / 135W</b>              | complete        |

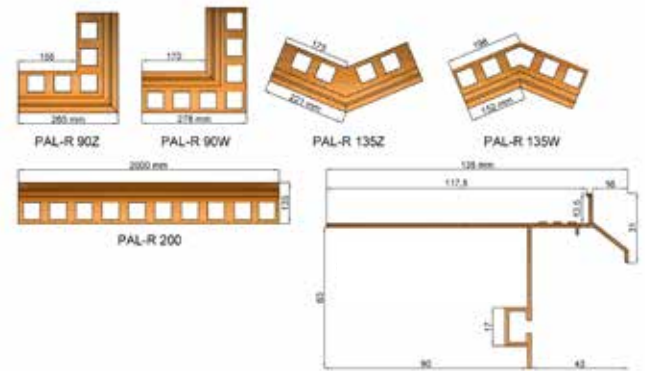
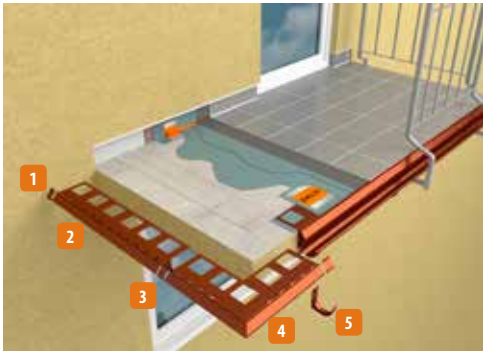
## PROFILE BOLIX PAL-100



| PRODUITS            | Product name                              | Unit of measure |
|---------------------|---|-----------------|
| 1. END STOP         | <b>BOLIX PAL-F complete (left, right)</b> | kit             |
| 2. STRAIGHT PROFILE | <b>BOLIX PAL-100 (length 2.0 m)</b>       | complete        |
| 3. SPLICE           | <b>BOLIX PAL-100C</b>                     | complete        |
| 4. OUTSIDE CORNER   | <b>BOLIX PAL-100 90Z / 135Z</b>           | complete        |
| 4. INSIDE CORNER    | <b>BOLIX PAL-100 90W / 135W</b>           | complete        |

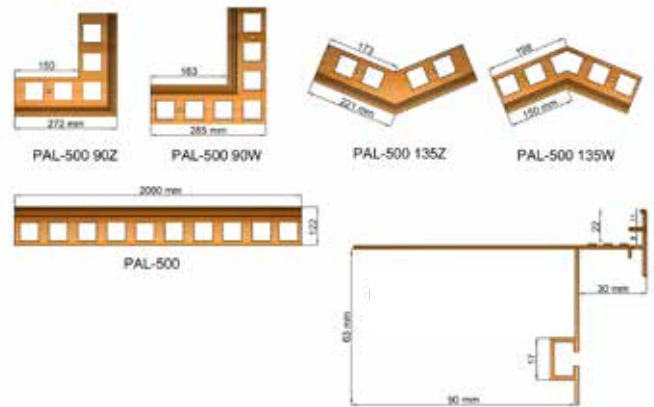
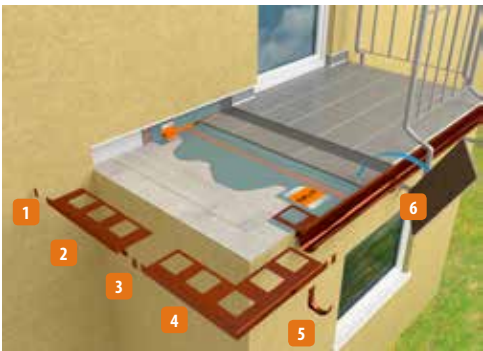
# BALCONY PROFILES

## PROFILE BOLIX PAL-R



| PRODUITS                                  | Product name                               | Unit of measure |
|---|--|-----------------|
| 1. END STOP                               | <b>BOLIX PAL-RF complete (left, right)</b> | kit             |
| 2. STRAIGHT PROFILE                       | <b>BOLIX PAL-R 200 (length 2.0 m)</b>      | complete        |
| 3. SPLICE                                 | <b>BOLIX PAL-RC</b>                        | complete        |
| 4. OUTSIDE CORNER                         | <b>BOLIX PAL-R 90Z / 135Z</b>              | complete        |
| 4. INSIDE CORNER                          | <b>BOLIX PAL-R 90W / 135W</b>              | complete        |
| 5. GUTTER HOOK+SCREWS (4 units + 8 units) | <b>BOLIX PAL-RH</b>                        | kit             |

## PROFILE BOLIX PAL-500



| PRODUITS                                  | Product name                                 | Unit of measure |
|---|--|-----------------|
| 1. END STOP                               | <b>BOLIX PAL-500F complete (left, right)</b> | kit             |
| 2. STRAIGHT PROFILE                       | <b>BOLIX PAL- 500 (length 2.0 m)</b>         | complete        |
| 3. SPLICE                                 | <b>BOLIX PAL-500C</b>                        | complete        |
| 4. OUTSIDE CORNER                         | <b>BOLIX PAL-500 90Z / 135Z</b>              | complete        |
| 4. INSIDE CORNER                          | <b>BOLIX PAL-500 90W / 135W</b>              | complete        |
| 5. GUTTER HOOK+SCREWS (4 units + 8 units) | <b>BOLIX PAL-RH</b>                          | kit             |
| TAPIS DE DRAINAGE                         | <b>BOLIX MD500</b>                           | complete        |

## BASIC

|  |                 |
|--|-----------------|
|  | <b>RAL 7037</b> |
|  | <b>RAL 7024</b> |
|  | <b>RAL 8019</b> |

OTHER COLORS ON THE REQUESTMENT



# BITUMEN WATERPROOFING





# BITUMEN WATERPROOFING

## BOLIX B-MB EMULSION POLYMER MODIFIED BITUMEN EMULSION FOR SEALING VARIOUS SURFACES



- Quickly develops weather resistance after application.
- Can be used as a primer after diluting with water.
- UV resistant.
- Solvent-free.
- For interior and exterior application.
- For installation of XPS boards.

| Product name               | Average material consumption per 1m <sup>2</sup> [l/m <sup>2</sup> ] | Unit of Measure [l] |
|----------------------------|--|---------------------|
| <b>BOLIX B-MB Emulsion</b> | 0,6 (for damp proofing)  | 25                  |

## BOLIX B-1SM EXPRESS POLYMER MODIFIED BITUMEN EMULSION FOR SEALING VARIOUS SURFACES



- Quickly develops weather resistance after application.
- Fast-drying.
- Flexible.
- Crack filling properties.
- Solvent-free.
- For interior and exterior application.
- For installation of XPS boards.

| Product name               | Average material consumption per 1m <sup>2</sup> [l/m <sup>2</sup> ]                      | Unit of Measure [l] |
|----------------------------|---|---------------------|
| <b>BOLIX B-1SM Express</b> | ca. 3.5 (for damp proofing)<br>ca. 3.5 (for waterproofing)<br>ca. 4.5 (for waterproofing) | 32                  |

## BOLIX B-2SM PROFI TWO-PART, THICK-COAT POLYSTYRENE MODIFIED BITUMEN AND RUBBER MASTIC TO PROVIDE A WATERPROOFING COATING AND INSTALL INSULATION BOARDS



- Quickly develops weather resistance after application.
- Fast-drying.
- Quickly develops weather resistance after application.
- Provides highly flexible coating.
- Crack filling properties.
- Resistant to aggressive substances present in soil.
- Solvent-free.
- For interior and exterior application.
- For installation of XPS boards.

| Product name             | Average material consumption per 1m <sup>2</sup> [l/m <sup>2</sup> ]                      | Unit of Measure [l] |
|--------------------------|---|---------------------|
| <b>BOLIX B-2SM Profi</b> | ca. 4.5 (for damp proofing)<br>ca. 4.5 (for waterproofing)<br>ca. 6,0 (for waterproofing) | 30                  |

## BOLIX B-2SM UNI TWO-PART, THICK-COAT FIBRE-REINFORCED BITUMEN AND RUBBER MASTIC TO PROVIDE A WATERPROOFING COATING AND INSTALL XPS BOARDS



- Quickly develops weather resistance after application.
- Fast-drying.
- Flexible.
- Crack filling properties.
- Resistant to aggressive substances present in soil.
- Solvent-free.
- For interior and exterior application.
- For installation of XPS boards.

| Product name           | Average material consumption per 1m <sup>2</sup> [kg/m <sup>2</sup> ]                    | Unit of Measure [kg] |
|------------------------|--|----------------------|
| <b>BOLIX B-2SM Uni</b> | ca. 4,4 (for damp proofing)<br>ca. 4,4 (for waterproofing)<br>ca.5,7 (for waterproofing) | 32                   |

# PRODUCT INDEX

## PRODUCT PAGE NO.

### COMPARISON OF INSULATION ADHESIVES

|                          |    |
|--------------------------|----|
| SOLTHERM SA              | 18 |
| SOLTHERM UB              | 18 |
| SOLTHERM UB-P            | 18 |
| SOLTHERM WB              | 18 |
| SOLTHERM MA              | 19 |
| SOLTHERM MB              | 19 |
| SOLTHERM UB SPECIAL      | 19 |
| SOLTHERM DA-P            | 19 |
| SOLTHERM BC-P            | 20 |
| SOLTHERM BC-P QUICK      | 20 |
| SOLTHERM BC-P QUICK FLEX | 20 |

### SETTING ACCELERATORS

|                     |    |
|---------------------|----|
| SOLTHERM 4 SEASONS  | 21 |
| SOLTHERM 4 SEASON-D | 21 |

### REINFORCING MESH

|                   |    |
|-------------------|----|
| SOLTHERM HD 188/S | 21 |
| SOLTHERM HD 379/S | 21 |

### FOAMS

|               |    |
|---------------|----|
| SOLTHERM ZP   | 22 |
| SOLTHERM PM-L | 22 |

### RENDER SCRATCH COAT

|             |    |
|-------------|----|
| BOLIX OT    | 22 |
| BOLIX TCW-L | 22 |

### THIN-COAT RENDERS

|                    |    |
|--------------------|----|
| SOLTHERM AFC       | 23 |
| SOLTHERM MTC GRAY  | 23 |
| SOLTHERM MTC WHITE | 23 |
| SOLTHERM SDR       | 23 |
| SOLTHERM AMC       | 24 |
| SOLTHERM AF-P+     | 24 |
| SOLTHERM SFC-P     | 24 |
| SOLTHERM SFC-P+    | 24 |

### EXTERIOR WALL PAINTS

|                 |    |
|-----------------|----|
| SOLTHERM ACP    | 25 |
| SOLTHERM STPT   | 25 |
| SOLTHERM STC-P  | 25 |
| SOLTHERM STC-P+ | 25 |

### ANTIMICROBIAL WALL AND ROOF COATING

|           |    |
|-----------|----|
| BOLIX GLO | 26 |
| BOLIX PRO | 26 |

### PRIMER

|                     |    |
|---------------------|----|
| SOLTHERM AP COLOUR  | 26 |
| SOLTHERM SNP COLOUR | 26 |

### PRIMERS AND SEALERS

|              |    |
|--------------|----|
| SOLTHERM STP | 27 |
| SOLTHERM SNP | 27 |

### PRIMER & SURFACE STRENGTHENER

|                 |    |
|-----------------|----|
| SOLTHERM T      | 28 |
| BOLIX BETOGRUNT | 28 |
| SOLTHERM CS     | 28 |
| SOLTHERM AP     | 28 |
| SOLTHERM SP     | 28 |
| SOLTHERM PTE    | 29 |
| SOLTHERM OM     | 29 |
| SOLTHERM IMP    | 29 |
| SOLTHERM ATC    | 29 |

### BEDDING AND JOINT

|              |    |
|--------------|----|
| SOLTHERM M10 | 30 |
| SOLTHERM KL  | 30 |
| SOLTHERM LRC | 30 |
| SOLTHERM GF  | 30 |

### DECORATIVE EFFECTS

|                             |    |
|-----------------------------|----|
| SOLTHERM TBR                | 38 |
| SOLTHERM BFC BRICK TOP COAT | 38 |
| SOLTHERM DIAMENT            | 38 |
| SOLTHERM DECO LAZUR         | 38 |
| SOLTHERM BR                 | 38 |
| SOLTHERM AMC DECO           | 38 |
| SOLTHERM TR                 | 39 |
| SOLTHERM DECO               | 39 |
| SOLTHERM DECO <sub>BM</sub> | 39 |
| SOLTHERM METALLIC POINT     | 39 |
| SOLTHERM WS                 | 39 |
| SOLTHERM GMP                | 39 |

### ADHESIVES, GROUTS AND OTHER PRODUCTS FOR CERAMICS AND NATURAL STONE

|                   |    |
|-------------------|----|
| BOLIX B           | 41 |
| BOLIX P           | 42 |
| BOLIX P WHITE     | 42 |
| BOLIX PE          | 42 |
| BOLIX E           | 42 |
| SOLTHERM SE       | 42 |
| SOLTHERM SE WHITE | 43 |
| BOLIX BK          | 43 |
| BOLIX HYDRO       | 44 |
| BOLIX HYDRO-T     | 44 |
| BOLIX AQUASTOP    | 44 |
| SOLTHERM AQUASTOP | 44 |

### INTERIOR PAINTS

|                             |    |
|-----------------------------|----|
| BOLIX SONATA ACRYL WHITE    | 47 |
| BOLIX ACORD ACRYL PERFECT   | 47 |
| BOLIX POLITONE PLUS         | 47 |
| BOLIX CAMERTONE LATEX SATIN | 47 |
| BOLIX CAMERTONE LATEX MATT  | 48 |
| BOLIX HARMONIC SILICATE     | 48 |
| BOLIX PROCARE AG+           | 48 |
| BOLIX PRESTO ACRYL          | 48 |
| BOLIX AC3                   | 49 |
| BOLIX AC3                   | 49 |
| BOLIX AC3                   | 49 |

### PRIMER

|                          |    |
|--------------------------|----|
| BOLIX ACTIVE GRUNT LATEX | 49 |
| BOLIX SG-W               | 49 |

### PRODUCTS FOR TERRACES, LOGGIAS AND BALCONIES

|                 |    |
|-----------------|----|
| BOLIX AKO       | 51 |
| BOLIX SCS       | 51 |
| BOLIX WB        | 51 |
| BOLIX SPN       | 51 |
| BOLIX HYDRO DUO | 51 |
| BOLIX PC-B      | 52 |
| BOLIX PC-S      | 52 |
| BOLIX PC        | 52 |
| BOLIX EK        | 52 |
| BOLIX GS        | 52 |
| BOLIX SPK       | 52 |
| BOLIX HYDRO-TW  | 53 |
| BOLIX HYDRO-TBS | 53 |
| BOLIX HYDRO-MB  | 53 |
| BOLIX SD        | 53 |
| BOLIX MTC FC    | 53 |

### BALCONY PROFILES

|               |    |
|---------------|----|
| BOLIX PAL     | 54 |
| BOLIX PAL-E   | 54 |
| BOLIX PAL-100 | 54 |
| BOLIX PAL-R   | 55 |
| BOLIX PAL-533 | 55 |

### ANCILLARY PRODUCTS

|                     |    |
|---------------------|----|
| BOLIX B-MB EMULSION | 57 |
| BOLIX B-1SM EXPRESS | 57 |
| BOLIX B-2SM PROFI   | 57 |
| BOLIX B-2SM UNI     | 57 |



Rózsa

22



**S**  **L THERM**

