

# Northern NZ

# SANDY & MUDDY SHORE GUIDE



*A handy guide to the common animals and plants living on the sandy and muddy seashores of northern New Zealand.*

## SHOW RESPECT FOR SEASHORE CREATURES



- ☆ Tread carefully.
- ☆ Leave creatures where you found them.
- ☆ Leave attached seaweed in place.
- ☆ Handle creatures with care - close to the ground with wet hands.
- ☆ Carefully put sediment and rocks back to the same location you found them.
- ☆ Limit your collection of empty shells as other creatures may use them as homes.

## AVOID DISTURBING WILDLIFE



- 🌀 Keep your distance from seabirds including penguins.
- 🌀 Keep your distance from seals and sea lions.
- 🌀 Use the zoom on your camera or binoculars for close viewing.
- 🌀 If sea lions approach you - back away slowly.
- 🌀 Keep dogs under control.
- 🌀 Pick up any rubbish found.

## BE CAREFUL AND KEEP SAFE



- 🦠 Check tide times to avoid being cut off by rising tide.
- 🦠 Do not explore the seashore alone.
- 🦠 Watch for changing weather.
- 🦠 Look out for waves - never turn your back to the ocean.
- 🦠 Soft mud can be dangerous. If you start to sink turn back.
- 🦠 Check signs for any local hazards.

The NZ Marine Studies Centre (Dunedin) provides expert knowledge, research opportunities, educational programmes and resources for schools about New Zealand's marine environment.

### Acknowledgements

The Sandy and Muddy Shore Guide, produced by the NZ Marine Studies Centre, Department of Marine Science, University of Otago, is proudly supported and funded by Mobil Oil New Zealand Limited.

Photographer D. Pagé. Illustrator Graeme Furness. Additional photos R. Taylor, M. Francis, F. Keil, S. Mills, C. Brett, P. Batson, T. Bird and A. O'Neill.

© NZ Marine Studies Centre 2014. All Rights Reserved.

Every effort has been made to ensure the accuracy of this guide at the time of publication.

# ANEMONES



Burrowing Anemone  
*Edwardsia neozelanica*  
20 mm

Mudflat Anemone  
*Anthopleura aureoradiata*  
20 mm

# BARNACLES



Attached to cockle shells

Estuarine Barnacle  
*Austrominius modestus*  
5 mm

# BIVALVES



Nut Shell  
*Linucula hartvigiana*  
8 mm



Morning Star Shell  
*Tawera spissa*  
25 mm



Cockle / Little-neck Clam  
*Austrovenus stutchburyi*  
50 mm

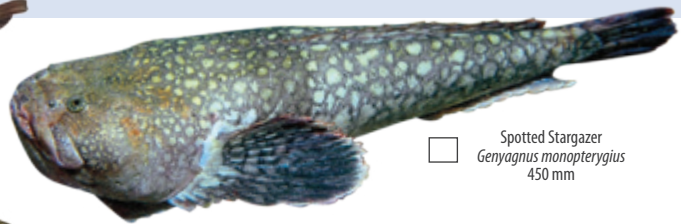


Small Dog Cockle  
*Glycymeris modesta*  
30 mm

# FISH



Estuarine Triplefin  
*Forsterygion nigripenne*  
90 mm



Spotted Stargazer  
*Genyagnus monoptyerygius*  
450 mm



Sand Flounder  
*Rhombosolea plebeia*  
430 mm



Sole  
*Peltorhampus* spp.  
350 mm

# CRABS



Burrow opening



Stalk-eyed Mud Crab  
*Macrophthalmus hirtipes*  
35 mm



Paddle Crab  
*Ovalipes catharus*  
150 mm



Burrow opening



Tunnelling Mud Crab  
*Austrohelice crassa*  
20 mm



Hairy-handed Crab  
*Hemigrapsus crenulatus*  
40 mm



Estuarine Pillbox Crab  
*Halicarcinus whitei*  
10 mm



Ribbed Venus Clam  
*Leukoma crassicosta*  
45 mm

Oblong Venus Clam  
*Venerupis largillierti*  
60 mm

Venus Clam  
*Dosinia subrosea*  
60 mm



Wafer Clam  
*Hiatula siliquens*  
50 mm



Pipi  
*Paphies australis*  
60 mm



Sunset Shell  
*Gari canvexa*  
60 mm



Triangular Trough Clam  
*Crassula aequilatera*  
70 mm



Surf Clam  
*Spisula murchisoni*  
90 mm



Northern Tuatua  
*Paphies subtriangulata*  
50 mm



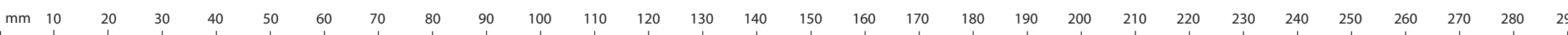
Feeding mark



Wedge Shell  
*Macomona liliana*  
55 mm



Pacific Oyster  
*Crassostrea gigas*  
120 mm



# SHRIMPS & HOPPERS



Burrows

Burrowing Amphipod  
*Paracorophium excavatum*  
3 mm



Sandhopper  
*Bellorchestia quoyana*  
14 mm

Isopod  
*Scyphax ornatus*  
10 mm



Snapping Shrimp  
*Alpheus richardsoni*  
65 mm



Burrow entrance and exit

Ghost Shrimp  
*Biffarius filholi*  
60 mm



Burrow opening

Mantis Shrimp  
*Heterosquilla tricarinata*  
75 mm



Male

Female



Sand Shrimp  
*Philocheas australis*  
40 mm

# WORMS

Spaghetti Worm  
Family Terebellidae  
40 mm



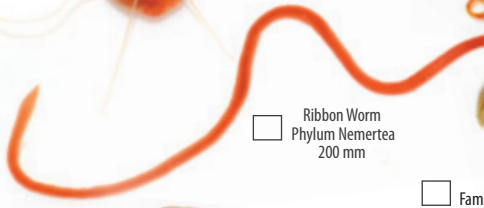
Oweniid Worm  
Family Oweniidae  
45 mm



Cirratulid Worm  
Family Cirratulidae  
100 mm



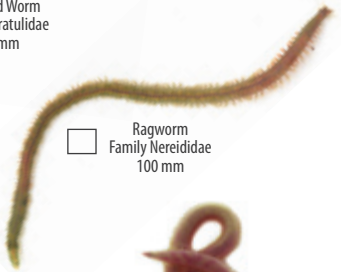
Cockle Shell Worm  
*Boccardia* sp.  
20 mm



Ribbon Worm  
Phylum Nemertea  
200 mm



Catworm  
Family Nephytidae  
100 mm



Ragworm  
Family Nereididae  
100 mm



Bamboo Worm  
Family Maldanidae  
130 mm



Faecal casts

Lugworm  
*Abarenicola affinis*  
100 mm



Blood Worm  
Family Glyceridae  
130 mm



Polychaete Worm  
Family Orbinidae  
100 mm



Faecal casts

# SNAILS & LIMPETS



Topshell  
*Cantharidus huttonii*  
12 mm



Large Horn Snail  
*Zeacumantus lutulentus*  
25 mm



Wheel Snail  
*Zethalia zelandica*  
22 mm



Mud Snail  
*Amphibola crenata*  
30 mm



Auger Shell  
*Pervicacia tristis*  
24 mm



Ostrich Foot Snail  
*Struthiolaria papulosa*  
60 mm



Mudflat Whelk  
*Cominella glandiformis*  
25 mm



Small Turret  
*Stiracolpus pagoda*  
30 mm



Turret Shell  
*Maoricolpus roseus*  
80 mm



Horn Snail  
*Zeacumantus subcarinatus*  
15 mm



Olive Bubble Shell  
*Bulla quoyii*  
55 mm



Ostrich Foot Whelk  
*Pellicaria vermis*  
40 mm



Speckled Whelk  
*Cominella adspersa*  
45 mm



Southern Olive Snail  
*Amalda australis*  
30 mm Long



Mudflat Topshell  
*Diloma subrostrata*  
30 mm



Arabic Volute  
*Alcithoe arabica*  
100 mm



Necklace Snail  
*Tanea zelandica*  
33 mm



White Bubble Shell  
*Haminoea zelandiae*  
20 mm



Australian Dog Whelk  
*Nassarius burchardi*  
12 mm



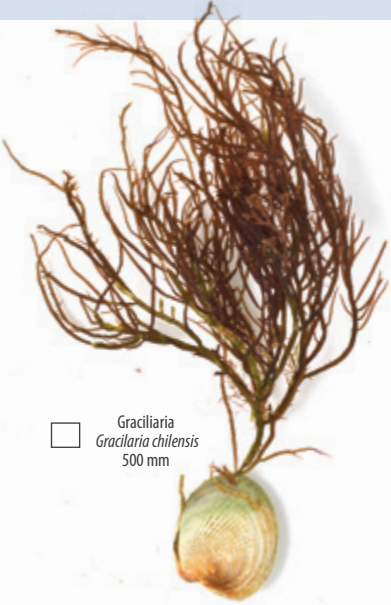
Wentletrap  
*Cirsotrema zelebori*  
22 mm



Estuarine Limpet  
*Notoacmea* sp.  
11 mm

# SEAWEED & DIATOMS

# PLANTS



Gracilaria  
*Gracilaria chilensis*  
500 mm



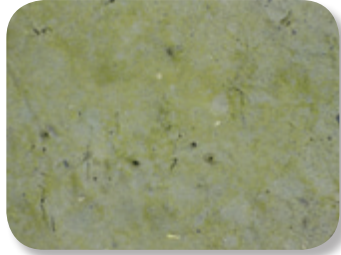
Sea Lettuce  
*Ulva* spp.  
300 mm



Filamentous Red  
*Polysiphonia* spp.  
150 mm



Spume (Diatom matter)



Benthic Diatom  
(green scum)



Eelgrass  
*Zostera muelleri*  
300 mm



Glasswort  
*Sarcocornia quinqueflora*  
150 mm



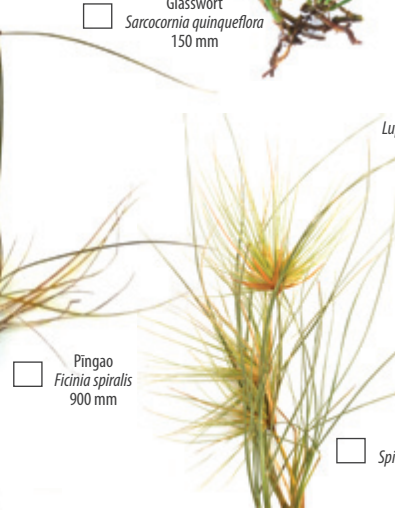
Shore Spurge  
*Euphorbia glauca*  
500 mm



Tree Lupin  
*Lupinus arboreus*  
1500 mm



Marram Grass  
*Ammophila arenaria*  
1200 mm



Pingao  
*Ficinia spiralis*  
900 mm



Spinifex  
*Spinifex sericeus*  
300 mm

# DRIFT

# SEA URCHINS



Ram's Horn Squid Shell  
*Spirula spirula*  
30 mm



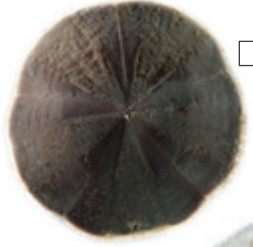
Violet Snail  
*Janthina* sp.  
45 mm



Pelagic Barnacles  
*Lepas anatifera*  
40 mm



Blue Bottle Jellyfish  
*Physalia physalia*  
150 mm



Sand Dollar  
*Fellaster zelandiae*  
100 mm



Heart Urchin  
*Echinocardium cordatum*  
90 mm



Knobby Clubrush  
*Isolepis nodosa*  
1500 mm



Leafless Rush  
*Juncus edgariae*  
2000 mm



Jointed Wire Rush  
*Apodasmia similis*  
1500 mm



Mangrove  
*Avicenna marina australasica*  
2000 mm