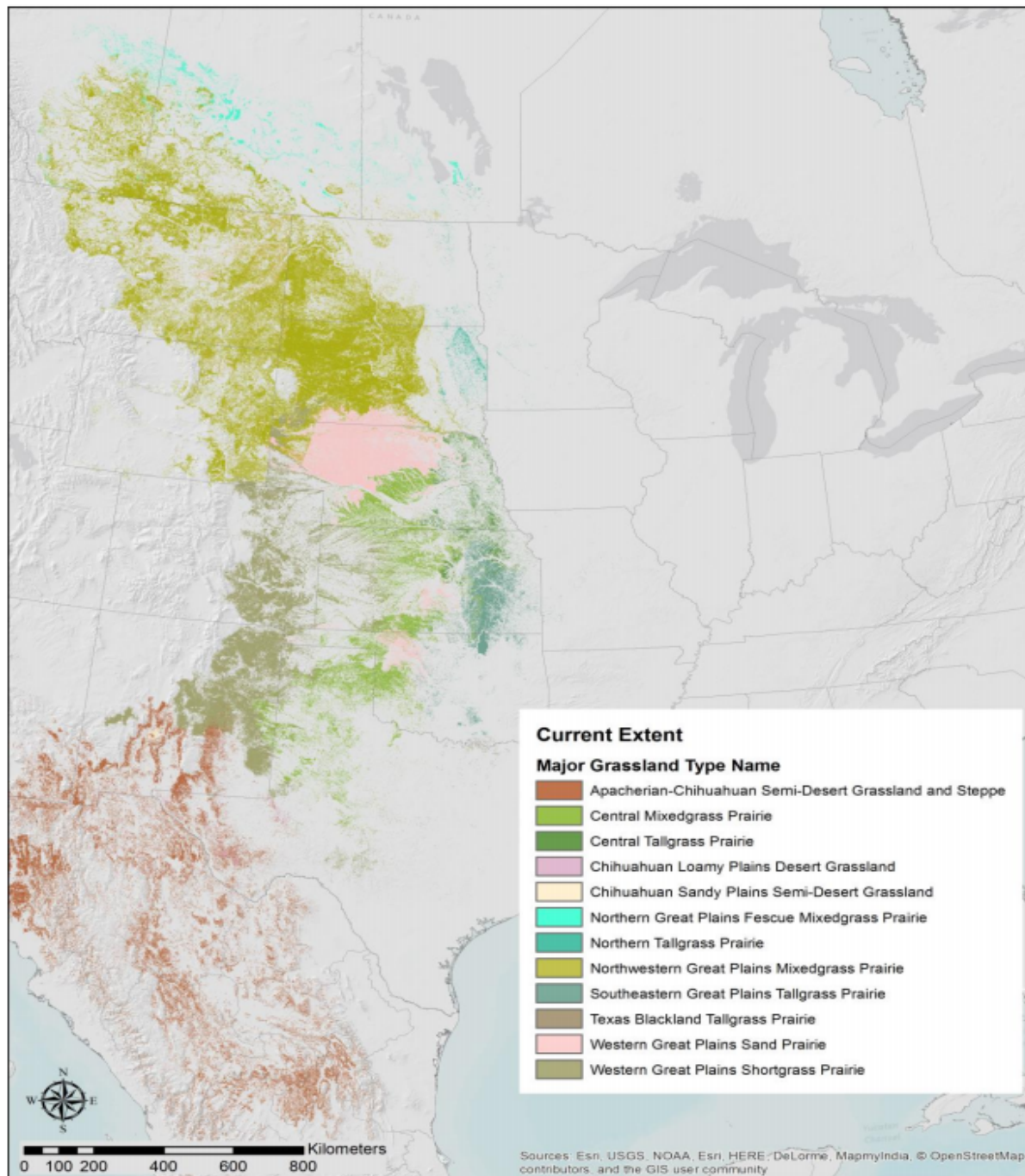


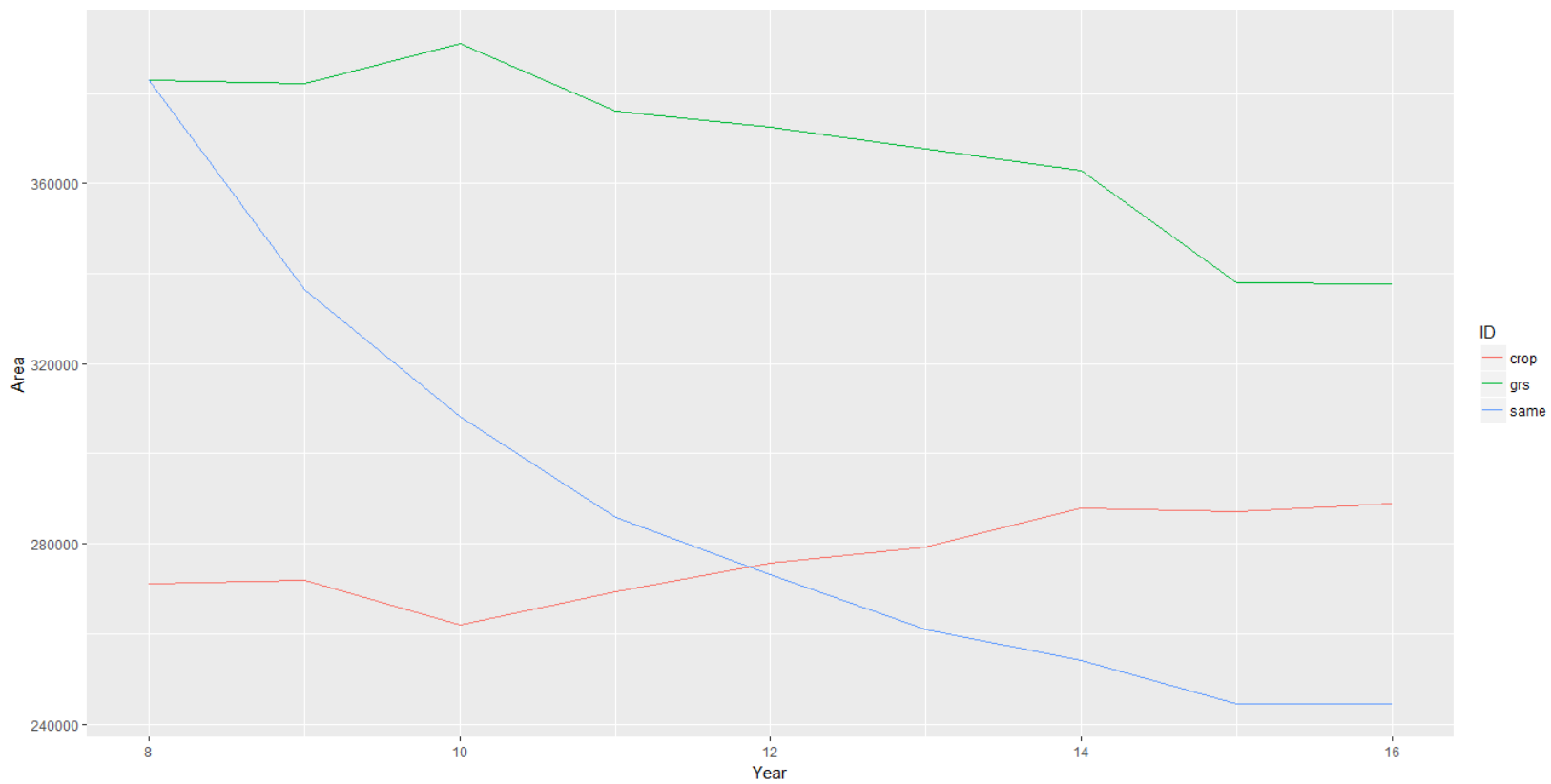
Great Plains Grassland Assessment

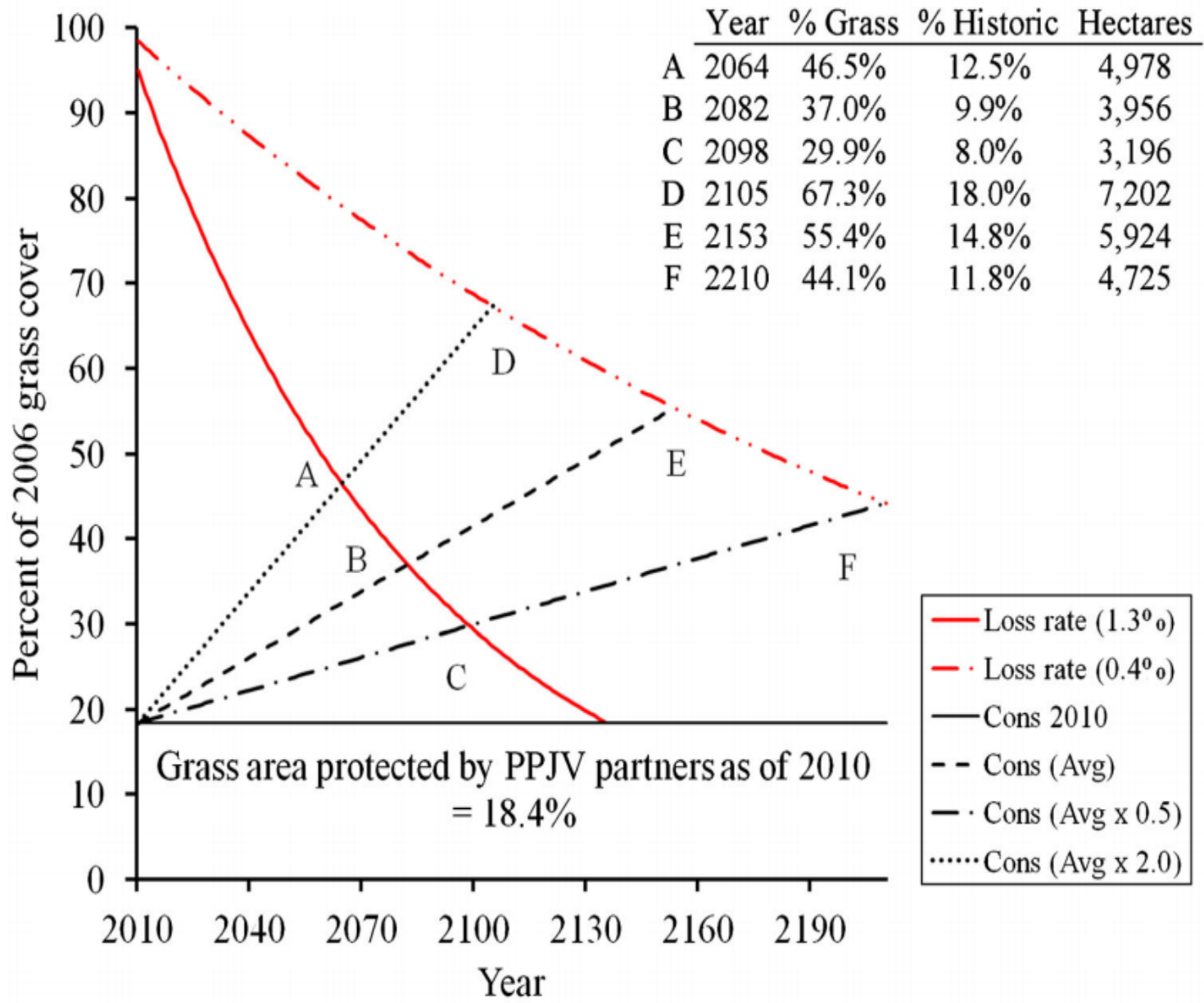
Kevin Barnes USFWS Prairie Pothole Joint Venture
&
Sean Fields/Casey Stemler USFWS Prairie Pothole Joint
Venture

Funding and Collaboration

- Conoco-Phillips
- Meeting with US joint ventures to brain storm







Past Work

- Bauman, P., B. Carlson, T. Butler. 2016. Quantifying Undisturbed (Native) Lands in Eastern South Dakota: 2013. South Dakota State University Open PRAIRIE: Open Public Research Access Institutional Repository and Information Exchange, Brookings, South Dakota.
- Olimb, S. K., A. P. Dixon, E. Dolfi, R. Engstrom, K. Anderson. 2017. Prairie or planted? Using time-series NDVI to determine grassland characteristics in Montana. *GeoJournal*: 1-16.



US - Workflow

- Farm Service Agency, Common Land Unit and crop history data.
- Remove non-grass cover classes using Cropland Data Layer and other data sets (transportation, wetland, forest cover, etc).
- NDVI time series to ID native grass within grass cover.

Canada and Mexico Workflow

- TBD