



Family: BURSIDAE

Class: GASTROPODA

--- Clade: CAENOASTROPODA-HYPSOGASTROPODA-LITTORINIMORPHA-TONNOIDEA

----- Family: BURSIDAE Thiele, 1925 (Sea)

- Alphabetic order - when **first name** is in bold the species has images
Taxa=220, Genus=7, Subgenus=2, Species=53, Subspecies=29, Synonyms=128, Images=81

- **affinis**, [Bursa granularis affinis](#) W.J. Broderip, 1833
- **affinis granularis**, Bursa affinis granularis P.F. Röding, 1798 - syn of: [Bursa granularis](#) (P.F. Röding, 1798)
- **albivariosa**, [Bufonaria rana albivariosa](#) L.A. Reeve, 1844
- **albofasciata**, [Marsupina nana albofasciata](#) G.B. I Sowerby, 1841
- **alfredensis**, [Bursa granularis alfredensis](#) W.H. Turton, 1932
- **asperrima**, [Bursa asperrima](#) R.W. Dunker, 1862
- **australiensis**, [Bufonaria rana australiensis](#) T. Cossignani, 1994
- **awatii**, [Bursa awatii](#) H.C. Ray, 1949
- **awatii irregularis**, [Bursa awatii irregularis](#) T. Cossignani, 1994
- **awatii minima**, [Bursa awatii minima](#) T. Cossignani, 1994
- **awatii regularis**, [Bursa awatii regularis](#) A.G. Beu, 1994
- **bardeyi**, [Tutufa bardeyi](#) (F.P. Jousseume, 1881)
- **bardeyi**, Tutufella bardeyi F.P. Jousseume, 1881 - syn of: [Tutufa bardeyi](#) (F.P. Jousseume, 1881)
- **beckii**, Bufonaria beckii L.C. Kiener, 1841 - syn of: [Bufonaria rana](#) (C. Linnaeus, 1758)
- **benvegnuae**, [Bursa ranelloides benvegnuae](#) L. Penna-Neme & J.L.M. Leme, 1978
- **bergeri**, Bursa bergeri C.M. Tapparone-Canefri, 1881 - syn of: [Bursa rhodostoma](#) (G.B. II Sowerby, 1835)
- **boholica**, [Tutufella boholica](#) A.G. Beu, 1987
- **borisbeckeri**, [Bursina borisbeckeri](#) (M. Parth, 1996)
- **bowdenensis**, Marsupina bowdenensis H.A. Pilsbry, 1922 - syn of: [Marsupina bufo](#) (J.G. Bruguière, 1792)
- **bubo**, [Tutufa bubo](#) (C. Linnaeus, 1758)
- **bubo**, [Marsupina bufo](#) (J.G. Bruguière, 1792)
- **bubo**, [Tutufa bufo](#) (P.F. Röding, 1798)
- **bubo**, Bufonaria bufo J.G. Bruguière, 1792 - syn of: [Marsupina bufo](#) (J.G. Bruguière, 1792)
- **bubo**, Marsupina bufo J.G. Bruguière, 1792 - syn of: [Marsupina bufo](#) (J.G. Bruguière, 1792)
- **bubo lissostoma**, [Tutufa bufo lissostoma](#) E.A. Smith, 1914
- **bubo robusta**, [Tutufa bufo robusta](#) T. Cossignani, 2009
- **bufonia**, [Bursa bufonia](#) (J.F. Gmelin, 1791)
- **bufonia dunkeri**, [Bursa bufonia dunkeri](#) T. Kira, 1962
- **caelata**, [Bursa corrugata caelata](#) W.J. Broderip, 1833
- **caelata louisiana**, Bursa caelata louisiana M. Smith, 1948 - syn of: [Bursa corrugata](#) (G. Perry, 1811)
- **calcipicta**, [Crossata ventricosa calcipicta](#) (W.J. Broderip, 1833)
- **calcipicta**, Bursa calcipicta A.M. Keen, 1958 - syn of: [Bursa rugosa](#) (G.B. II Sowerby, 1835)
- **caledonensis**, Tutufella caledonensis F.P. Jousseume, 1881 - syn of: [Tutufella rubeta](#) (C. Linnaeus, 1758)
- **caledonicus**, Tutufa caledonicus F.P. Jousseume, 1881 - syn of: [Tutufella rubeta](#) (C. Linnaeus, 1758)
- **californica**, [Crossata ventricosa californica](#) (W.J. Broderip, 1833)
- **californica sonorana**, Crossata californica sonorana W.J. Broderip, 1833 - syn of: [Crossata ventricosa californica](#) (W.J. Broderip, 1833)
- **canarica**, Colubrinella canarica F. Nordsieck, 1975 - syn of: [Bursa ranelloides](#) (L.A. Reeve, 1844)
- **candisata**, Bursa candisata J.B.P.A. Lamarck, 1822 - syn of: [Bursa condita](#) (J.F. Gmelin, 1791)
- **candisatum**, Bursa candisatum P.F. Röding, 1798 - syn of: [Bursa condita](#) (J.F. Gmelin, 1791)
- **cavitense**, Bufonaria cavitense H.H. Beck - syn of: [Bufonaria margaritula](#) (G.P. Deshayes, 1832)
- **cavitensis**, [Bufonaria cavitensis](#) (L.A. Reeve, 1844)
- **colombiana**, Marsupina colombiana N.E. Weisbord, 1929 - syn of: [Marsupina bufo](#) (J.G. Bruguière, 1792)
- **condita**, [Bursa condita](#) (J.F. Gmelin, 1791)
- **coriacea**, Bursa coriacea L.A. Reeve, 1844 - syn of: [Bursa scrobilator coriacea](#) L.A. Reeve, 1844
- **coriacea**, [Bursa scrobilator coriacea](#) L.A. Reeve, 1844
- **corrugata**, [Bursa corrugata](#) (G. Perry, 1811)
- **corrugata caelata**, [Bursa corrugata caelata](#) W.J. Broderip, 1833
- **corrugata lineata**, Bursa corrugata lineata G.W. Nowell-Usticke, 1959 - syn of: [Bursa granularis](#) (P.F. Röding, 1798)
- **corrugata ponderosa**, [Bursa corrugata ponderosa](#) L.A. Reeve, 1844
- **corrugata pustulosa**, [Bursa corrugata pustulosa](#) L.A. Reeve, 1844
- **crassa**, Bursa crassa L.W. Dilwyn, 1817 - syn of: [Marsupina bufo](#) (J.G. Bruguière, 1792)
- **crassa bituberculata**, Marsupina crassa bituberculata M.M. Schepman, 1887 - syn of: [Marsupina bufo](#) (J.G. Bruguière, 1792)
- **crassa carribbaea**, Marsupina crassa carribbaea M. Smith, 1948 - syn of: [Marsupina bufo](#) (J.G. Bruguière, 1792)
- **crassa carribbaea**, Bursa crassa carribbaea M. Smith, 1948 - syn of: [Marsupina bufo](#) (J.G. Bruguière, 1792)
- **cristinae**, [Bufonaria cristinae](#) M. Parth, 1989
- **cruentata**, [Bursa cruentata](#) (G.B. II Sowerby, 1835)
- **crumena**, [Bufonaria crumena](#) (J.B.P.A. Lamarck, 1816)

- **crumena**, *Bursa crumena* J.B.P.A. Lamarck, 1816 - syn of: [Bufonaria crumena](#) (J.B.P.A. Lamarck, 1816)
- **crumena cavitensis**, *Bufonaria crumena cavitensis* H.H. Beck in L.A. Reeve, 1844 - syn of: [Bufonaria cavitensis](#) (L.A. Reeve, 1844)
- **crumena cavitensis**, *Bufonaria crumena cavitensis* L.A. Reeve, 1844 - syn of: [Bufonaria cavitensis](#) (L.A. Reeve, 1844)
- **crumena foliata**, *Bufonaria crumena foliata* W.J. Broderip, 1825 - syn of: [Bufonaria foliata](#) (W.J. Broderip, 1826)
- **crumenoides**, *Bufonaria crumenoides* A. Valenciennes, 1832 - syn of: [Bufonaria crumena](#) (J.B.P.A. Lamarck, 1816)
- **cubaniana**, [Bursa granularis cubaniana](#) D'Orbigny, 1842
- **cubaniana**, *Bursa cubaniana* D'Orbigny, 1842 - syn of: [Bursa granularis cubaniana](#) D'Orbigny, 1842
- **cubaniana**, *Bursa cubaniana* G.W. Nowell-Usticke, 1959 - syn of: [Bursa granularis cubaniana](#) D'Orbigny, 1842
- **cubaniana intermedia**, *Bursa cubaniana intermedia* G.W. Nowell-Usticke, 1959 - syn of: [Bursa granularis](#) (P.F. Röding, 1798)
- **cumingiana**, [Bursa granularis cumingiana](#) (R.W. Dunker, 1862)
- **cumingiana**, *Bursa cumingiana* R.W. Dunker, 1862 - syn of: [Bursa granularis cumingiana](#) (R.W. Dunker, 1862)
- **davidboschi**, [Bursa davidboschi](#) A.G. Beu, 1987
- **dunkeri**, [Bursa bufonia dunkeri](#) T. Kira, 1962
- **dunkeri**, *Bursa dunkeri* T. Kira, 1962 - syn of: [Bursa bufonia dunkeri](#) T. Kira, 1962
- **echinata**, [Bufonaria echinata](#) (J.H.F. Link, 1807)
- **echinata**, *Bursa echinata* J.H.F. Link, 1807 - syn of: [Bufonaria echinata](#) (J.H.F. Link, 1807)
- **echinatum**, *Bufonaria echinatum* J.H.F. Link, 1807 - syn of: [Bufonaria echinata](#) (J.H.F. Link, 1807)
- **elegans**, [Bufonaria elegans](#) (G.B. II Sowerby, 1836)
- **elegantula**, *Bufonaria elegantula* J. de C. Sowerby, 1798 - syn of: [Bufonaria perelegans](#) A.G. Beu, 1987
- **elisabettae**, [Bursa granularis elisabettae](#) Nappo, G. Pellegrini & G. Bonomolo, 2014
- **fernandesi**, [Bursina fernandesi](#) (A.G. Beu, 1977)
- **fernandesi**, *Bursina fernandesi* A.G. Beu, 1977 - syn of: [Bursina fernandesi](#) (A.G. Beu, 1977)
- **fijiensis**, [Bursina fijiensis](#) (R.B. Watson, 1881)
- **finlayi**, *Bursa finlayi* J.T.L. McGinty, 1962 - syn of: [Bursa ranelloides tenuisculpta](#) P. Dautzenberg & H. Fischer, 1906
- **foliata**, [Bufonaria foliata](#) (W.J. Broderip, 1826)
- **foliata**, *Bufonaria foliata* W.J. Broderip, 1826 - syn of: [Bufonaria foliata](#) (W.J. Broderip, 1826)
- **fosteri**, [Bursa fosteri](#) A.G. Beu, 1987
- **fusca**, *Bursa fusca* L.F.A. Souleyet, 1852 - syn of: [Bursa scrobilator](#) (C. Linnaeus, 1758)
- **gibbosa**, *Marsupina gibbosa* P.F. Röding, 1798 - syn of: [Marsupina bufo](#) (J.G. Bruguière, 1792)
- **gibbosa**, *Bursa gibbosa* P.F. Röding, 1798 - syn of: [Marsupina bufo](#) (J.G. Bruguière, 1792)
- **gnorima**, [Bursina gnorima](#) (J.C. Melvill, 1918)
- **gnorima**, *Bursa gnorima* J.C. Melvill, 1918 - syn of: [Bursina gnorima](#) (J.C. Melvill, 1918)
- **granifera**, *Bursa granifera* J.B.P.A. Lamarck, 1816 - syn of: [Bursa granularis](#) (P.F. Röding, 1798)
- **granosa**, [Bufonaria granosa](#) (K. Martin, 1884)
- **granularis**, [Bursa granularis](#) (P.F. Röding, 1798)
- **granularis**, *Colubrellina granularis* P.F. Röding, 1798 - syn of: [Bursa granularis](#) (P.F. Röding, 1798)
- **granularis affinis**, [Bursa granularis affinis](#) W.J. Broderip, 1833
- **granularis alfredensis**, [Bursa granularis alfredensis](#) W.H. Turton, 1932
- **granularis cubaniana**, [Bursa granularis cubaniana](#) D'Orbigny, 1842
- **granularis cumingiana**, [Bursa granularis cumingiana](#) (R.W. Dunker, 1862)
- **granularis elisabettae**, [Bursa granularis elisabettae](#) Nappo, G. Pellegrini & G. Bonomolo, 2014
- **granularis semigranosa**, [Bursa granularis semigranosa](#) (G.P. Deshayes, 1846)
- **granulata**, *Marsupina granulata* J.B.P.A. Lamarck, 1816 - syn of: [Marsupina bufo](#) (J.G. Bruguière, 1792)
- **grayana**, [Bursa grayana](#) R.W. Dunker, 1862
- **hians**, *Tutufa hians* H.C.F. Schumacher, 1817 - syn of: [Tutufella rubeta](#) (C. Linnaeus, 1758)
- **hians**, *Tutufella hians* H.C.F. Schumacher, 1817 - syn of: [Tutufella rubeta](#) (C. Linnaeus, 1758)
- **humilis**, [Bursa humilis](#) A.G. Beu, 1981
- **ignobilis**, [Bursina ignobilis](#) (A.G. Beu, 1987)
- **inflata**, *Aspa inflata* A. Risso, 1826 - syn of: [Aspa marginata](#) (J.F. Gmelin, 1791)
- **irregularis**, [Bursa awatii irregularis](#) T. Cossignani, 1994
- **jabick**, *Bursa jabick* P.F. Röding, 1798 - syn of: [Bursa granularis](#) (P.F. Röding, 1798)
- **jabik**, *Bursa jabik* P.F. Röding, 1798 - syn of: [Bursa granularis](#) (P.F. Röding, 1798)
- **koperbergae**, *Bursa koperbergae* C.O. Van Regteren Altena, 1942 - syn of: [Bursina gnorima](#) (J.C. Melvill, 1918)
- **koperbergae**, *Bufonaria koperbergae* C.O. Van Regteren Altena, 1942 - syn of: [Bursina gnorima](#) (J.C. Melvill, 1918)
- **kowiensis**, *Bursa kowiensis* W.H. Turton, 1932 - syn of: [Bursa granularis](#) (P.F. Röding, 1798)
- **laevigata**, *Bufonaria laevigata* J.B.P.A. Lamarck - syn of: [Bursa corrugata pustulosa](#) L.A. Reeve, 1844
- **lamarckii**, [Bursa lamarckii](#) (G.P. Deshayes, 1853)
- **lamellosa**, *Bursa lamellosa* R.W. Dunker, 1863 - syn of: [Aspella producta](#) (W.H. Pease, 1861)
- **lampas**, *Tutufa lampas* C. Linnaeus, 1758 - syn of: [Tutufa bufo](#) (C. Linnaeus, 1758)
- **lampas**, *Tutufa lampas* T. Iwakawa, 1900 - syn of: [Tutufa bufo](#) (P.F. Röding, 1798)
- **latitudo**, [Bursa latitudo](#) T.A. Garrard, 1961
- **latitudo fosteri**, *Colubrellina latitudo fosteri* A.G. Beu, 1987 - syn of: [Bursa fosteri](#) A.G. Beu, 1987
- **latitudo natalensis**, *Colubrellina latitudo natalensis* A.C. dos Santos Coelho & H.R. Matthews, 1970 - syn of: [Bursa natalensis](#) A.C. dos Santos Coelho & H.R. Matthews, 1970
- **latitudo wolfei**, [Bursa latitudo wolfei](#) T.A. Garrard, 1961

- **leo**, Bursa leo T. Shikama, 1964 - syn of: [Bursa tuberosissima](#) (L.A. Reeve, 1844)
- **lissostoma**, [Tutufa bufo lissostoma](#) E.A. Smith, 1914
- **livida**, Bursa livida L.A. Reeve, 1844 - syn of: [Bursa granularis](#) (P.F. Röding, 1798)
- **lucaensis**, [Bursa lucaensis](#) M. Parth, 1991
- **luteostoma**, [Bursa luteostoma](#) (W.H. Pease, 1861)
- **mammata**, Bursa mammata P.F. Röding, 1798 - syn of: [Bursa bufonia](#) (J.F. Gmelin, 1791)
- **margaeritula**, Bufonaria margaeritula G.P. Deshayes, 1832 - syn of: [Bufonaria margaritula](#) (G.P. Deshayes, 1832)
- **margaritula**, [Bufonaria margaritula](#) (G.P. Deshayes, 1832)
- **margaritula**, Bursa margaritula G.P. Deshayes, 1832 - syn of: [Bufonaria margaritula](#) (G.P. Deshayes, 1832)
- **marginata**, [Aspa marginata](#) (J.F. Gmelin, 1791)
- **marginata**, Bufonaria marginata J.F. Gmelin, 1791 - syn of: [Aspa marginata](#) (J.F. Gmelin, 1791)
- **marginata**, Bursa marginata J.F. Gmelin, 1791 - syn of: [Aspa marginata](#) (J.F. Gmelin, 1791)
- **minima**, [Bursa awatii minima](#) T. Cossignani, 1994
- **monitata**, Bursa monitata P.F. Röding, 1798 - syn of: [Bursa bufonia](#) (J.F. Gmelin, 1791)
- **nana**, [Marsupina nana](#) (W.J. Broderip & G.B. I Sowerby, 1829)
- **nana albobfasciata**, [Marsupina nana albobfasciata](#) G.B. I Sowerby, 1841
- **natalensis**, [Bursa natalensis](#) A.C. dos Santos Coelho & H.R. Matthews, 1970
- **neglecta**, Bufonaria neglecta G.B. II Sowerby, 1842 - syn of: [Bufonaria margaritula](#) (G.P. Deshayes, 1832)
- **nigrita**, [Tutufella nigrita](#) H. Mühlhäusser & M. Böcher, 1979
- **nobilis**, [Bursina nobilis](#) (L.A. Reeve, 1844)
- **nobilis**, Bursa nobilis L.A. Reeve, 1844 - syn of: [Bursina nobilis](#) (L.A. Reeve, 1844)
- **oyamai**, [Tutufella oyamai](#) (T. Habe, 1973)
- **pacamoni**, Bursa pacamoni H.R. Matthews & A.C. dos Santos Coelho, 1971 - syn of: [Bursa grayana](#) R.W. Dunker, 1862
- **pacator**, Bufonaria pacator T. Iredale, 1931 - syn of: [Bufonaria margaritula](#) (G.P. Deshayes, 1832)
- **packamoni**, Bursa packamoni H.R. Matthews & A.C. dos Santos Coelho, 1971 - syn of: [Bursa grayana](#) R.W. Dunker, 1862
- **papilla**, Bursa papilla W. Wood, 1828 - syn of: [Bursa verrucosa](#) (G.B. I Sowerby, 1825)
- **paulucciana**, Bursa paulucciana C.M. Tapparone-Canefri, 1880 - syn of: [Bursa rhodostoma](#) (G.B. II Sowerby, 1835)
- **perelegans**, [Bufonaria perelegans](#) A.G. Beu, 1987
- **pesleonis**, Bursa pesleonis H.C.F. Schumacher, 1817 - syn of: [Bursa scrobilator](#) (C. Linnaeus, 1758)
- **phuketensis**, [Bufonaria rana phuketensis](#) T. Kira, 1955
- **ponderosa**, Bursa ponderosa Auct. non L.A. Reeve, 1844 - syn of: [Bursa corrugata pustulosa](#) L.A. Reeve, 1844
- **ponderosa**, [Bursa corrugata ponderosa](#) L.A. Reeve, 1844
- **proavus**, Marsupina proavus H.A. Pilsbry, 1922 - syn of: [Marsupina bufo](#) (J.G. Bruguière, 1792)
- **pustulosa**, [Bursa corrugata pustulosa](#) L.A. Reeve, 1844
- **pustulosa jabik**, Bursa pustulosa jabik E. Fischer-Piette, 1942 - syn of: [Bursa corrugata](#) (G. Perry, 1811)
- **pygmaea**, Bursa pygmaea S. Kosuge, 1979 - syn of: [Bursa ranelloides](#) (L.A. Reeve, 1844)
- **quercina**, Bursa quercina O.A.L. Mörch, 1853 - syn of: [Bursa scrobilator](#) (C. Linnaeus, 1758)
- **quirihorai**, [Bursa quirihorai](#) A.G. Beu, 1987
- **rana**, [Bufonaria rana](#) (C. Linnaeus, 1758)
- **rana albivariosa**, [Bufonaria rana albivariosa](#) L.A. Reeve, 1844
- **rana australiensis**, [Bufonaria rana australiensis](#) T. Cossignani, 1994
- **rana bubo**, Tutufa rana bubo C. Linnaeus, 1758 - syn of: [Tutufa bubo](#) (C. Linnaeus, 1758)
- **rana phuketensis**, [Bufonaria rana phuketensis](#) T. Kira, 1955
- **rana rubeta**, Tutufella rana rubeta C. Linnaeus, 1758 - syn of: [Tutufella rubeta](#) (C. Linnaeus, 1758)
- **ranelloides**, [Bursa ranelloides](#) (L.A. Reeve, 1844)
- **ranelloides**, Tutufa ranelloides J.C. Melville & R. Standen, 1899 - syn of: [Tutufella oyamai](#) (T. Habe, 1973)
- **ranelloides benvegnuae**, [Bursa ranelloides benvegnuae](#) L. Penna-Neme & J.L.M. Leme, 1978
- **ranelloides humilis**, Colubrellina ranelloides humilis A.G. Beu, 1981 - syn of: [Bursa humilis](#) A.G. Beu, 1981
- **ranelloides rehderi**, [Bursa ranelloides rehderi](#) R. Robertson, 1957
- **ranelloides tenuisculpta**, [Bursa ranelloides tenuisculpta](#) P. Dautzenberg & H. Fischer, 1906
- **regularis**, [Bursa awatii regularis](#) A.G. Beu, 1994
- **rehderi**, Bursa rehderi A.G. Beu, 1978 - syn of: [Bursa awatii](#) H.C. Ray, 1949
- **rehderi**, [Bursa ranelloides rehderi](#) R. Robertson, 1957
- **rhodostoma**, [Bursa rhodostoma](#) (G.B. II Sowerby, 1835)
- **rhodostoma thomae**, [Bursa rhodostoma thomae](#) (D'Orbigny, 1847)
- **rhodostoma venustula**, [Bursa rhodostoma venustula](#) (L.A. Reeve, 1844)
- **rhodostoma xantostoma**, Bursa rhodostoma xantostoma C.M. Tapparone-Canefri, 1878 - syn of: [Bursa rhodostoma](#) (G.B. II Sowerby, 1835)
- **robusta**, [Tutufa bufo robusta](#) T. Cossignani, 2009
- **robusta**, Tutufa robusta T. Cossignani, 2009 - syn of: [Tutufa bufo robusta](#) T. Cossignani, 2009
- **rosa**, [Bursa rosa](#) (G. Perry, 1811)
- **rubeta**, [Tutufella rubeta](#) (C. Linnaeus, 1758)
- **rubeta**, Bursa rubeta C. Linnaeus, 1758 - syn of: [Tutufella rubeta](#) (C. Linnaeus, 1758)
- **rubeta**, Tutufa rubeta C. Linnaeus, 1758 - syn of: [Tutufella rubeta](#) (C. Linnaeus, 1758)
- **rubeta**, Tutufa rubeta E.A. Smith, 1914 - syn of: [Tutufa bubo](#) (C. Linnaeus, 1758)
- **rubeta gigantea**, Bursa rubeta gigantea E.A. Smith, 1914 - syn of: [Tutufa bardeyi](#) (F.P. Jousseaume, 1881)

- **rubeta gigantea**, *Tutufa rubeta gigantea* E.A. Smith, 1914 - syn of: [Tutufa bardeyi](#) (F.P. Jousseume, 1881)
 - **rubeta tenuigrosa**, *Tutufa rubeta tenuigrosa* E.A. Smith, 1914 - syn of: [Tutufa tenuigranosa](#) (E.A. Smith, 1914)
 - **rubicola**, *Bursa rubicola* G. Perry, 1811 - syn of: [Bursa granularis](#) (P.F. Röding, 1798)
 - **rugosa**, [Bursa rugosa](#) (G.B. II Sowerby, 1835)
 - **scelestyum**, *Bufonaria scelestyum* M. Yokoyama, 1928 - syn of: [Bufonaria rana](#) (C. Linnaeus, 1758)
 - **scrobiculata**, *Bursa scrobiculata* C. Linnaeus, 1758 - syn of: [Bursa scrobilator](#) (C. Linnaeus, 1758)
 - **scrobiculator**, *Bursa scrobiculator* C. Linnaeus, 1758 - syn of: [Bursa scrobilator](#) (C. Linnaeus, 1758)
 - **scrobiculator minor**, *Bufonaria scrobiculator minor* P.M. Pallary, 1900 - syn of: [Bursa scrobilator](#) (C. Linnaeus, 1758)
 - **scrobiculatoria**, *Bufonaria scrobiculatoria* É.A.A. Locard, 1886 - syn of: [Bursa scrobilator](#) (C. Linnaeus, 1758)
 - **scrobilator**, [Bursa scrobilator](#) (C. Linnaeus, 1758)
 - **scrobilator coriacea**, [Bursa scrobilator coriacea](#) L.A. Reeve, 1844
 - **semigranosa**, [Bursa granularis semigranosa](#) (G.P. Deshayes, 1846)
 - **siphonata**, *Bursa siphonata* L.A. Reeve, 1844 - syn of: [Bursa rosa](#) (G. Perry, 1811)
 - **siphonatum**, *Marsupina siphonatum* T. Iredale, 1910 - syn of: [Marsupina bufo](#) (J.G. Bruguière, 1792)
 - **sonorana**, [Crossata ventricosa sonorana](#) (W.J. Broderip, 1833)
 - **spadicea**, *Marsupina spadicea* P.D. Montfort, 1810 - syn of: [Marsupina bufo](#) (J.G. Bruguière, 1792)
 - **spinosa**, *Bufonaria spinosa* G. Perry, 1811 - syn of: [Bufonaria echinata](#) (J.H.F. Link, 1807)
 - **spinosa**, *Bursa spinosa* H.C.F. Schumacher, 1817 - syn of: [Bufonaria echinata](#) (J.H.F. Link, 1807)
 - **spinosa**, *Bufonaria spinosa* H.C.F. Schumacher, 1817 - syn of: [Bufonaria echinata](#) (J.H.F. Link, 1807)
 - **spinosa**, *Bufonaria spinosa* J.B.P.A. Lamarck, 1816 - syn of: [Bufonaria echinata](#) (J.H.F. Link, 1807)
 - **subgranosa**, *Bufonaria subgranosa* G.B. II Sowerby, 1836 - syn of: [Bufonaria rana](#) (C. Linnaeus, 1758)
 - **subgranosa cristinae**, *Bufonaria subgranosa cristinae* M. Parth, 1989 - syn of: [Bufonaria cristinae](#) M. Parth, 1989
 - **suensonii**, *Bufonaria suensonii* O.A.L. Mörch, 1853 - syn of: [Bufonaria echinata](#) (J.H.F. Link, 1807)
 - **suensonii**, *Bursa suensonii* O.A.L. Mörch, 1853 - syn of: [Bufonaria echinata](#) (J.H.F. Link, 1807)
 - **tenuigranosa**, [Tutufa tenuigranosa](#) (E.A. Smith, 1914)
 - **tenuisculpta**, *Bursa tenuisculpta* P. Dautzenberg & H. Fischer, 1906 - syn of: [Bursa ranelloides tenuisculpta](#) P. Dautzenberg & H. Fischer, 1906
 - **tenuisculpta**, [Bursa ranelloides tenuisculpta](#) P. Dautzenberg & H. Fischer, 1906
 - **thersites**, [Bufonaria thersites](#) (J.H. Redfield, 1846)
 - **thomae**, [Bursa rhodostoma thomae](#) (D'Orbigny, 1847)
 - **thomae**, *Bursa thomae* D'Orbigny, 1842 - syn of: [Bursa rhodostoma thomae](#) (D'Orbigny, 1847)
 - **tuberculata**, *Bursa tuberculata* W.J. Broderip, 1833 - syn of: [Gyrineum natator](#) (P.F. Röding, 1798)
 - **tuberosissima**, [Bursa tuberosissima](#) (L.A. Reeve, 1844)
 - **ventricosa**, [Crossata ventricosa](#) (W.J. Broderip, 1833)
 - **ventricosa calcipicta**, [Crossata ventricosa calcipicta](#) (W.J. Broderip, 1833)
 - **ventricosa californica**, [Crossata ventricosa californica](#) (W.J. Broderip, 1833)
 - **ventricosa sonorana**, [Crossata ventricosa sonorana](#) (W.J. Broderip, 1833)
 - **venustula**, [Bursa rhodostoma venustula](#) (L.A. Reeve, 1844)
 - **verrucosa**, [Bursa verrucosa](#) (G.B. I Sowerby, 1825)
 - **verucosa**, *Bursa verucosa* G.B. I Sowerby, 1825 - syn of: [Bursa verrucosa](#) (G.B. I Sowerby, 1825)
 - **wolfei**, [Bursa latitudo wolfei](#) T.A. Garrard, 1961
 - **xanthostoma**, *Bursa xanthostoma* C.M. Tapparoni-Caneffi, 1880 - syn of: [Bursa rhodostoma](#) (G.B. II Sowerby, 1835)
-

Class: GASTROPODA

--- Clade: CAENOGASTROPODA-HYPSOGASTROPODA-LITTORINIMORPHA-TONNOIDEA

----- Family: **BURSIDAE** Thiele, 1925

Habitat= Sea, Taxonomic order

Taxa=220, Genus=7, Subgenus=2, Species=53, Subspecies=29, Synonyms=128, Images=81

Genus: **Aspa** H. Adams & A. Adams, 1853 (1 SP, 1 IMG)



1730200000

Aspa marginata

(J.F. Gmelin, 1791)

Canary Islands
34 mm



synonyms:

- *Ranella brocchi* H.G. Bronn, 1828
- *Aspa inflata* A. Risso, 1826
- *Bursa marginata* J.F. Gmelin, 1791
- *Buccinum marginatum* J.F. Gmelin, 1791
- *Nassarius inflata* A. Risso, 1826
- *Ranella laevigata* J.B.P.A. Lamarck, 1822
- *Bufonaria marginata* J.F. Gmelin, 1791

Genus: **Bufonaria** H.C.F. Schumacher, 1817 (syn: Chasmotheca - 11 SP, 13 IMG)

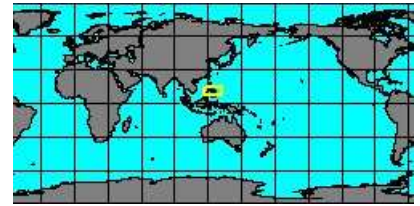
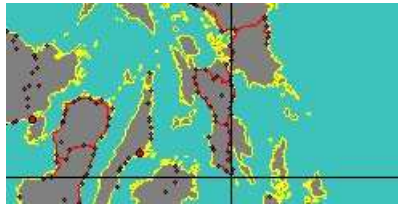


1730100020

Bufonaria cavitensis

(L.A. Reeve, 1844)

Philippines, Leyte Island
63,1 mm



synonyms:

- *Bufonaria crumena cavitensis* L.A. Reeve, 1844
- *Bufonaria crumena cavitensis* H.H. Beck in L.A. Reeve, 1844

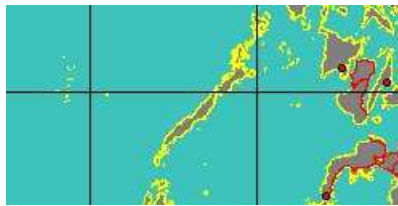


1730100010

Bufonaria cristinae

M. Parth, 1989

Philippines, Palawan Island
105,2 mm



synonyms:

- *Bufonaria subgranosa cristinae* M. Parth, 1989



1730100015

Bufonaria crumena

(J.B.P.A. Lamarck, 1816)

Mozambique, Bazaruto Island
64,9 mm



synonyms:

- *Bursa crumena* J.B.P.A. Lamarck, 1816
- *Ranella crumenoides* H.M.D. de Blainville in A. Valenciennes, 1832
- *Ranella crumena* J.B.P.A. Lamarck, 1816
- *Bufonaria crumenoides* A. Valenciennes, 1832

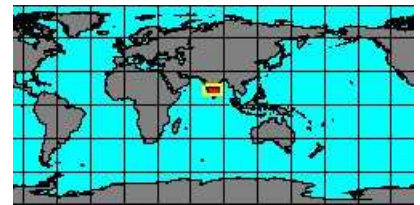


1730100025

Bufonaria echinata

(J.H.F. Link, 1807)

Madras, India
108 mm



synonyms:

- *Bursa echinata* J.H.F. Link, 1807
- *Bufonaria echinatum* J.H.F. Link, 1807
- *Bufonaria spinosa* H.C.F. Schumacher, 1817
- *Bursa spinosa* H.C.F. Schumacher, 1817
- *Bursa suensonii* O.A.L. Mörch, 1853
- *Gyrineum echinatum* J.H.F. Link, 1807
- *Bufonaria spinosa* G. Perry, 1811
- *Ranella spinosa* J.B.P.A. Lamarck, 1816
- *Bufonaria spinosa* J.B.P.A. Lamarck, 1816
- *Bufonaria suensonii* O.A.L. Mörch, 1853



1730100030

Bufonaria elegans

(G.B. II Sowerby, 1836)

Thailand, Phuket
62 mm





1730100040
Bufonaria foliata
 (W.J. Broderip, 1826)
 Mozambique, Nacala Bay
 75,44 mm



synonyms:

- Bufonaria crumena foliata W.J. Broderip, 1825
- Bufonaria foliata W.J. Broderip, 1826

- Ranella foliata W.J. Broderip, 1826



5248000001
Bufonaria granosa
 (K. Martin, 1884)

No Georeferenced data available

synonyms:

- Ranella spinosa granosa K. Martin, 1884



1730100055
Bufonaria margaritula
 (G.P. Deshayes, 1832)
 Philippines, Aliguay Island
 55 mm



synonyms:

- Bufonaria cavitense H.H. Beck
- Ranella margaritula G.P. Deshayes, 1832
- Bufonaria neglecta G.B. II Sowerby, 1842
- Bufonaria pacator T. Iredale, 1931

- Bufonaria margaeritula G.P. Deshayes, 1832
- Bursa margaritula G.P. Deshayes, 1832
- Ranella neglecta G.B. II Sowerby, 1836
- Gyryneum pacator T. Iredale, 1931



1730100070
Bufonaria perelegans
 A.G. Beu, 1987
 Philippines, Bohol Island
 74 mm



synonyms:

- Bufonaria elegantula J. de C. Sowerby, 1798



1730004030
Bufonaria rana
 (C. Linnaeus, 1758)
 Taiwan Strait
 121 mm



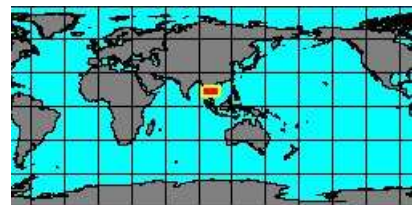
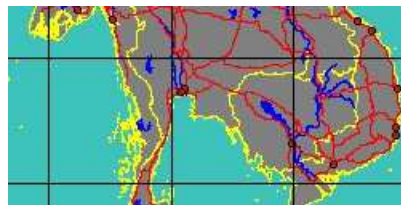
synonyms:

- Ranella albivaricosa L.A. Reeve, 1844
- Ranella beckii L.C. Kiener, 1841
- Murex rana C. Linnaeus, 1758
- Ranella subgranosa G.B. II Sowerby, 1836

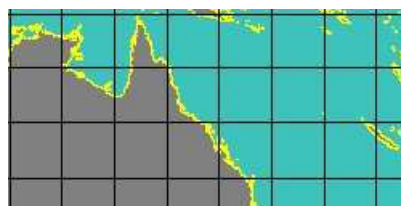
- Bufonaria beckii L.C. Kiener, 1841
- Bufonaria scelestyum M. Yokoyama, 1928
- Bufonaria subgranosa G.B. II Sowerby, 1836



1730100075
Bufonaria rana albivaricosa
 L.A. Reeve, 1844
 Thailand, Pattaya,
 87 mm

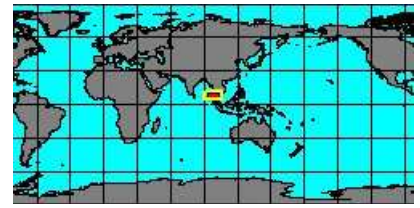
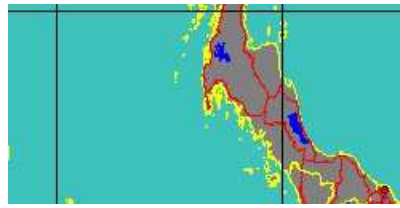


1730300050
Bufonaria rana australiensis
 T. Cossignani, 1994
 Australia, Queensland
 50 mm

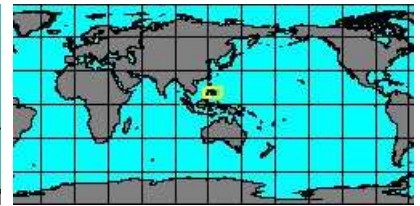
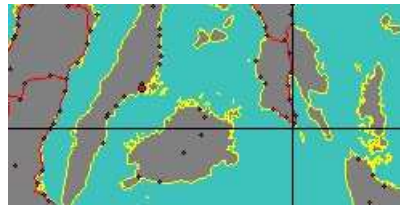




1730300060
Bufonaria
rana
phuketensis
 T. Kira, 1955
 Thailand, Phuket
 77 mm



1730100085
Bufonaria
thersites
 (J.H. Redfield, 1846)
 Philippines, Calituban Island
 52,1 mm



synonyms:

- *Ranella thersites* J.H. Redfield, 1846

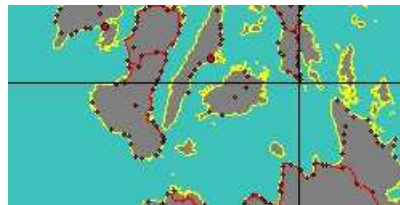
Genus: Bursa P.F. Röding, 1798 (syn: Lampadopsis, Pseudobursa, Lampasopsis - 24 SP, 44 IMG)



1730000000
Bursa
asperrima
 R.W. Dunker, 1862
 Coco Island, Mexico
 33 mm



1730000005
Bursa
awatii
 H.C. Ray, 1949
 Philippines, Bohol Island
 77 mm



synonyms:

- *Bursa rehderi* A.G. Beu, 1978



1730300080
Bursa
awatii
irregularis
 T. Cossignani, 1994
 Philippines, Balut Island
 53 mm



1730300090
Bursa
awatii
minima
 T. Cossignani, 1994
 Somalia



1730300070
Bursa
awatii
regularis
 A.G. Beu, 1994
 Philippines, Balicasag Island



1730000010
Bursa
bufonia
 (J.F. Gmelin, 1791)
 Philippines, Balicasag Island
 65 mm



synonyms:

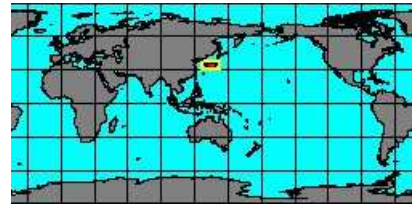
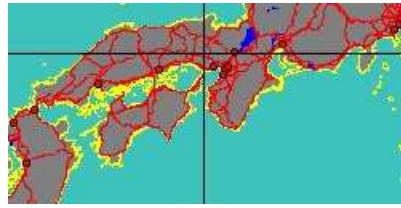
- Murex bufonia J.F. Gmelin, 1791
- Gyreum bufonium J.H.F. Link, 1807
- Bursa monitata P.F. Röding, 1798

- Ranella bufonia J.F. Gmelin, 1790
- Bursa mammata P.F. Röding, 1798



173000015
**Bursa
bufonia
dunkeri**
T. Kira, 1962

Wakayama, Japan
52,5 mm



synonyms:

- Bursa dunkeri T. Kira, 1962



1730300110
**Bursa
condita**

(J.F. Gmelin, 1791)
Philippines, Balabac Island
48,3 mm



synonyms:

- Ranella candidata J.B.P.A. Lamarck, 1822
- Buccinum candidatum P.F. Röding, 1798
- Murex condita J.F. Gmelin, 1791

- Bursa candidata J.B.P.A. Lamarck, 1822
- Bursa candidatum P.F. Röding, 1798



1730300120
**Bursa
corrugata**

(G. Perry, 1811)
Florida
40 mm



synonyms:

- Ranella caelata W.J. Broderip, 1833
- Bursa caelata lousa M. Smith, 1948
- Ranella ponderosa L.A. Reeve, 1844
- Ranella pustulosa jabik E. Fischer-Piette, 1942
- Ranella semigranosa J.B.P.A. Lamarck, 1822

- Biplex corrugata G. Perry, 1811
- Ranella pustulosa L.A. Reeve, 1844
- Bursa pustulosa jabik E. Fischer-Piette, 1942



1730000035
**Bursa
corrugata
caelata**

W.J. Broderip, 1833
Panama West
41 mm



1730000040
**Bursa
corrugata
ponderosa**

L.A. Reeve, 1844
Brasil, Salvador
37,8 mm



1730000045
**Bursa
corrugata
pustulosa**

L.A. Reeve, 1844
Senegal
54 mm



synonyms:

- Bufonaria laevigata J.B.P.A. Lamarck
- Bursa ponderosa Auct. non L.A. Reeve, 1844



1730004000
**Bursa
cruentata**

(G.B. II Sowerby, 1835)
Philippines, Masbate Island
36 mm

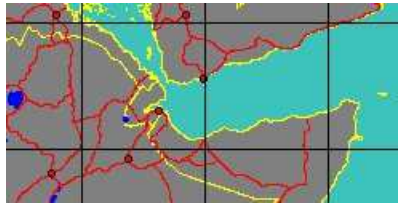


synonyms:

- *Ranella cruentata* G.B. II Sowerby, 1835



1730000050
Bursa davidboschi
A.G. Beu, 1987
Somalia, Berbera
36,5 mm

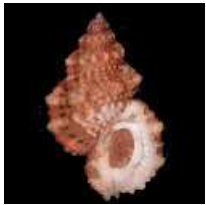


1730000065
Bursa fosteri
A.G. Beu, 1987
Philippines, Aliguay Island
50,2 mm



synonyms:

- *Colubrellina lttudo fosteri* A.G. Beu, 1987



1730300130
Bursa granularis
(P.F. Röding, 1798)
French Polynesia, Raiatea
58 mm



synonyms:

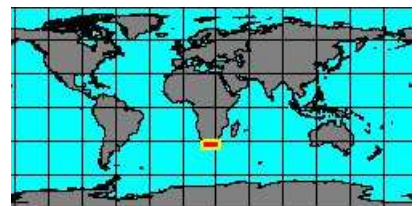
- *Ranella affinis* W.J. Broderip, 1833
- *Bursa affinis granularis* P.F. Röding, 1798
- *Ranella cubaniana* D'Orbigny, 1841
- *Ranella granifera* J.B.P.A. Lamarck, 1816
- *Buccinum granulare* P.F. Röding, 1798
- *Buccinum jabick* P.F. Röding, 1798
- *Bursa jabk* P.F. Röding, 1798
- *Ranella livida* L.A. Reeve, 1844
- *Bursa rubicola* G. Perry, 1811
- *Bursa corrugata lineata* G.W. Nowell-Usticke, 1959
- *Bursa cubaniana intermedia* G.W. Nowell-Usticke, 1959
- *Bursa granifera* J.B.P.A. Lamarck, 1816
- *Colubrellina granularis* P.F. Röding, 1798
- *Bursa jabick* P.F. Röding, 1798
- *Bursa kowiensis* W.H. Turton, 1932
- *Bursa livida* L.A. Reeve, 1844



1730000075
Bursa granularis affinis
W.J. Broderip, 1833
South Africa, Natal
51,8 mm



1730000080
Bursa granularis alfredensis
W.H. Turton, 1932
South Africa, Jeffreys Bay
40,2 mm



1730000085
Bursa granularis cubaniana
D'Orbigny, 1842
Brasil, Salvador
36,4 mm

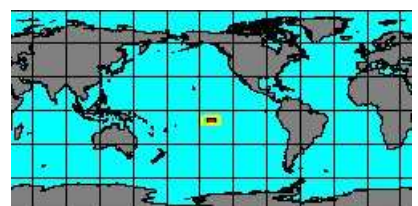
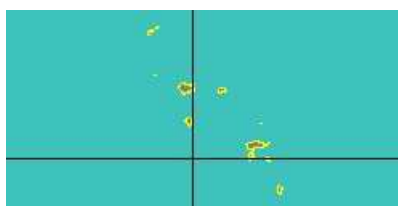


synonyms:

- *Bursa cubaniana* D'Orbigny, 1842
- *Bursa cubaniana* G.W. Nowell-Usticke, 1959



1730300140
Bursa granularis cumingiana
(R.W. Dunker, 1862)
French Polynesia
35,3 mm

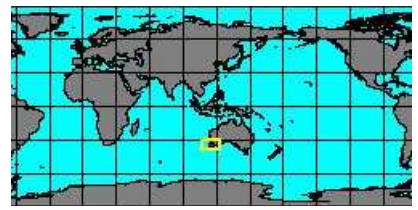


synonyms:

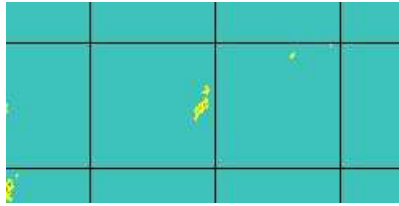
- *Bursa cumingiana* R.W. Dunker, 1862



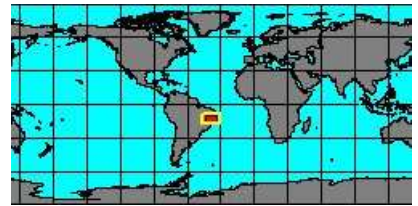
5248000003
**Bursa
granularis
elisabettae**
Nappo, G. Pellegrini & G. Bonomolo, 2014
Australia, Leeuwin
43,4 mm



1730300402
**Bursa
granularis
semigranosa**
(G.P. Deshayes, 1846)
Pabu
38,4 mm



1730000090
**Bursa
grayana**
R.W. Dunker, 1862
Salvador Bahia, Brasil
37 mm



synonyms:

- Bursa pacamoni H.R. Matthews & A.C. dos Santos Coelho, 1971

- Bursa packamoni H.R. Matthews & A.C. dos Santos Coelho, 1971



1730300390
**Bursa
humilis**
A.G. Beu, 1981
Philippines, Palawan Island
16,6 mm



synonyms:

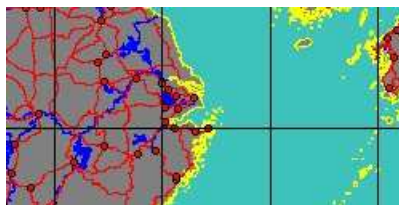
- Colubrellina raneloides humilis A.G. Beu, 1981



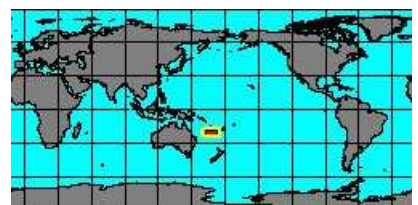
1730004045
**Bursa
lamarckii**
(G.P. Deshayes, 1853)
Philippines, Bohol Island
54,6 mm



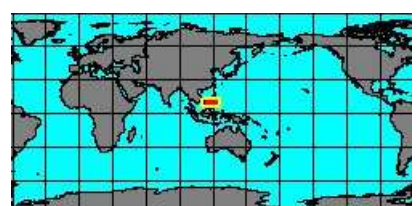
1730000100
**Bursa
latitudo**
T.A. Garrard, 1961
East China Sea
70 mm



1730300160
**Bursa
latitudo
wolfei**
T.A. Garrard, 1961
New Caledonia, Norfolk Ridge
90 mm



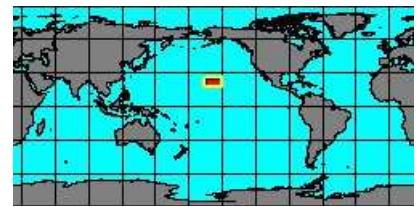
1730000110
**Bursa
lucaensis**
M. Parth, 1991
Philippines, Palawan Island
20 mm





1730004035
Bursa luteostoma
(W.H. Pease, 1861)

Hawaii
80 mm



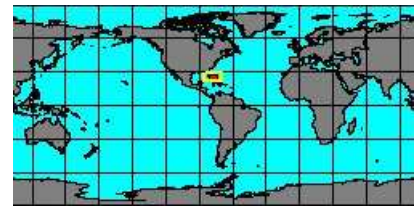
synonyms:

- *Ranella luteostoma* W.H. Pease, 1861



1730300180
Bursa natalensis
A.C. dos Santos Coelho,
& H.R. Matthews, 1970

Bahamas
56 mm

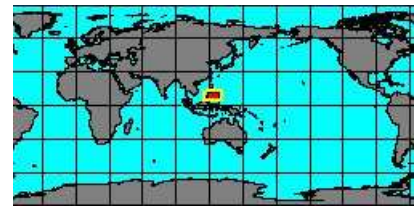


synonyms:

- *Colubrellina lttudo natalensis* A.C. dos Santos Coelho & H.R. Matthews, 1970



1730000115
Bursa quirihorai
A.G. Beu, 1987
Philippines, Aliguay Island
49,5 mm



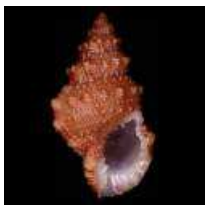
1730000120
Bursa ranelloides
(L.A. Reeve, 1844)
Canary Islands
64 mm



synonyms:

- *Colubrinella canarica* F. Nordsieck, 1975
- *Septa papillosum* A. Adams, 1870
- *Charonia ranelloides* L.A. Reeve, 1844

- *Bursa pygmaea* S. Kosuge, 1979
- *Ranella ranelloides* L.A. Reeve, 1844



1730300200
Bursa ranelloides benvegnae
L. Penna-Neme & J.L.M. Leme, 1978

Brasil
37,4 mm

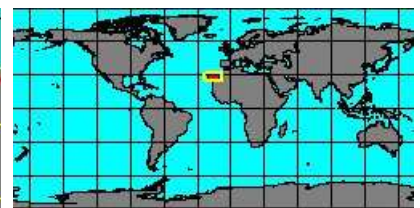
No Georeferenced data available



1730300210
Bursa ranelloides rehderi
R. Robertson, 1957
Somala



1730000125
Bursa ranelloides tenuisculpta
P. Dautzenberg & H. Fischer, 1906
Canary Islands
25 mm



synonyms:

- *Bursa finlayi* J.T.L. McGinty, 1962

- *Bursa tenuisculpta* P. Dautzenberg & H. Fischer, 1906



1730000130
Bursa rhodostoma
(G.B. II Sowerby, 1835)
Philippines, Olango Island
21,9 mm



synonyms:

- *Ranella bergeri* C.M. Tapparone-Canefri, 1881
- *Ranella paulucciana* C.M. Tapparone-Canefri, 1876
- *Ranella rhodostoma* G.B. II Sowerby, 1835
- *Bursa rhodostoma xantostoma* C.M. Tapparone-Canefri, 1878
- *Ranella venustula* L.A. Reeve, 1844

- *Bursa bergeri* C.M. Tapparone-Canefri, 1881
- *Bursa paulucciana* C.M. Tapparone-Canefri, 1880
- *Ranella rhodostoma xantostoma* C.M. Tapparone-Canefri, 1878
- *Ranella thomae* D'Orbigny, 1842
- *Bursa xanthostoma* C.M. Tapparone-Canefri, 1880



1730000165
**Bursa
rhodostoma
thomae**
(D'Orbigny, 1847)

Canary Islands
34,9 mm



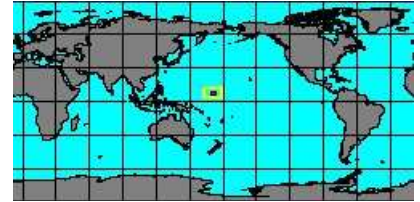
synonyms:

- *Bursa thomae* D'Orbigny, 1842



1730300250
**Bursa
rhodostoma
venustula**
(L.A. Reeve, 1844)

Majuro
23,7 mm



1730000140
**Bursa
rosa**
(G. Perry, 1811)

Zanzibar
45 mm



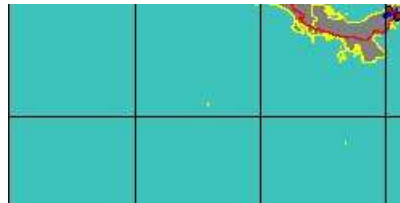
synonyms:

- *Ranella siphonata* L.A. Reeve, 1844
- *Bursa siphonata* L.A. Reeve, 1844



1730300230
**Bursa
rugosa**
(G.B. II Sowerby, 1835)

Isla del Coco
46 mm



synonyms:

- *Bursa calcipicta* A.M. Keen, 1958
- *Ranella rugosa* G.B. II Sowerby, 1835



1730000145
**Bursa
scrobilator**
(C. Linnaeus, 1758)

Canary Islands
57 mm



synonyms:

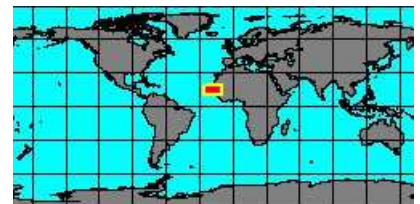
- *Ranella coriacea* L.A. Reeve, 1844
- *Bursa fusca* L.F.A. Souleyet, 1852
- *Bursa quercina* O.A.L. Mörch, 1853
- *Bursa scrobiculata* C. Linnaeus, 1758
- *Bufoaria scrobiculatoria* É.A.A. Locard, 1886

- *Bursa pesleonis* H.C.F. Schumacher, 1817
- *Bursa scrobiculata* C. Linnaeus, 1758
- *Bufoaria scrobiculata minor* P.M. Palfrey, 1900
- *Murex scrobilator* C. Linnaeus, 1758



1730000150
**Bursa
scrobilator
coriacea**
L.A. Reeve, 1844

Cap de Naze, Senegal
39 mm

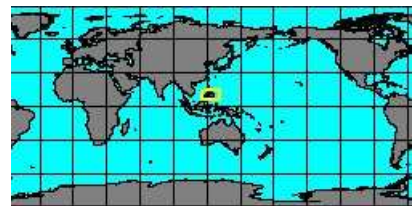
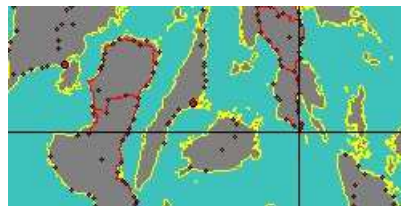


synonyms:

- *Bursa coriacea* L.A. Reeve, 1844



1730000170
**Bursa
tuberosissima**
(L.A. Reeve, 1844)
Philippines, Olango Island
34 mm

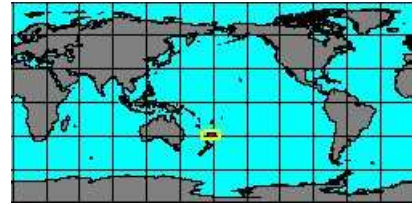
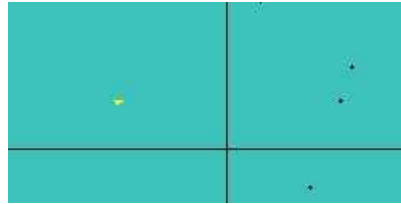


synonyms:

- Bursa leo T. Shikama, 1964
- Ranella tuberosissima L.A. Reeve, 1844



1730000175
**Bursa
verrucosa**
(G.B. I Sowerby, 1825)
Kermadecs, Raoul Island
29 mm



synonyms:

- Bursa papilla W. Wood, 1828
- Ranella verucosa G.B. I Sowerby, 1825

- Bursa verucosa G.B. I Sowerby, 1825

Genus: Bursa K. Oyama, 1964 (6 SP, 6 IMG)



1730100000
**Bursina
borisbeckeri**
(M. Parth, 1996)
Philippines, Balicasag Island
63 mm



1730100035
**Bursina
fernandesi**
(A.G. Beu, 1977)
Ras Hafun, Somalia
79,8 mm

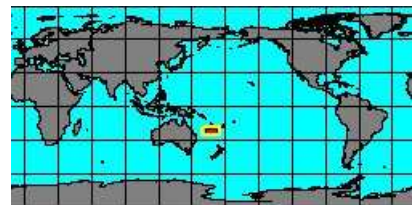


synonyms:

- Bursina fernandesi A.G. Beu, 1977



1730000055
**Bursina
fijiensis**
(R.B. Watson, 1881)
New Caledonia, Isle of Pines
54,8 mm



synonyms:

- Ranella fijiensis R.B. Watson, 1881



1730100045
**Bursina
gnorima**
(J.C. Melvill, 1918)
Philippines, Aliguay Island
76 mm



synonyms:

- Bursa gnorima J.C. Melvill, 1918
- Bufonaria koperbergae C.O. Van Regteren Altena, 1942

- Bursa koperbergae C.O. Van Regteren Altena, 1942



1730100050
**Bursina
ignobilis**
(A.G. Beu, 1987)
Philippines, Balicasag Island
42 mm





1730100065
Bursina nobilis
(L.A. Reeve, 1844)
Philippines, Aliguay Island
87 mm



synonyms:

- *Ranella nobilis* L.A. Reeve, 1844
- *Bursa nobilis* L.A. Reeve, 1844

Genus: Crossata F.P. Jousseaume, 1881 (1 SP, 4 IMG)



1730300260
Crossata ventricosa
(W.J. Broderip, 1833)
Païta, Peru
66 mm



synonyms:

- *Ranella ventricosa* W.J. Broderip, 1833



1730000020
Crossata ventricosa calipicta
(W.J. Broderip, 1833)
Panama West
54 mm

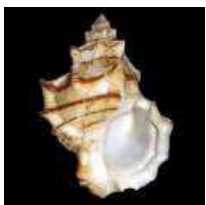


1730250000
Crossata ventricosa californica
(W.J. Broderip, 1833)
California
118 mm



synonyms:

- *Crossata californica sonorana* W.J. Broderip, 1833



1730000025
Crossata ventricosa sonora
(W.J. Broderip, 1833)
Mexico, Sonora
83 mm



Genus: Marsupina W.H. Dall, 1904 (syn: *Bufo* - 2 SP, 3 IMG)



1730100005
Marsupina bufo
(J.G. Bruguière, 1792)
Honduras
62,7 mm



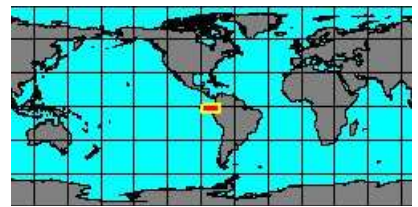
synonyms:

- *Marsupina bowdenensis* H.A. Pilsbry, 1922
- *Murex bufo* J.G. Bruguière, 1792
- *Marsupina bufo* J.G. Bruguière, 1792
- *Bursa crassa* L.W. Dilwyn, 1817
- *Marsupina crassa caribbaea* M. Smith, 1948
- *Murex crassus* L.W. Dilwyn, 1817
- *Bursa gibbosa* P.F. Röding, 1798
- *Marsupina granulata* J.B.P.A. Lamarck, 1816
- *Marsupina siphonatum* T. Iredale, 1910

- *Bufonaria bufo* J.G. Bruguière, 1792
- *Marsupina colombiana* N.E. Weisbord, 1929
- *Marsupina crassa bituberculata* M.M. Schepman, 1887
- *Bursa crassa caribbaea* M. Smith, 1948
- *Marsupina gibbosa* P.F. Röding, 1798
- *Ranella granulata* J.B.P.A. Lamarck, 1816
- *Marsupina proavus* H.A. Pilsbry, 1922
- *Marsupina spadicea* P.D. Montfort, 1810



1730100060
**Marsupina
 nana**
 (W.J. Broderip & G.B. I Sowerby, 1829)
 Ecuador
 60 mm



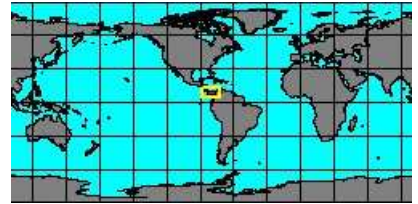
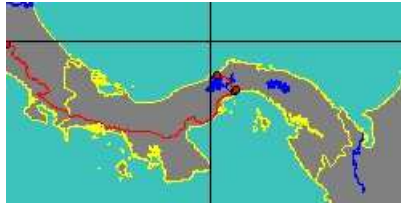
synonyms:

- *Ranella albofasciata* G.B. I Sowerby, 1841
- *Ranella pulchra* G.B. I Sowerby, 1835

- *Ranella nana* W.J. Broderip & G.B. I Sowerby, 1829



1730300040
**Marsupina
 nana
 albofasciata**
 G.B. I Sowerby, 1841
 Panama
 47 mm



Genus: Tutufa F.P. Jousseaume, 1881 (4 SP, 6 IMG)



1730300270
**Tutufa
 bardeyi**
 (F.P. Jousseaume, 1881)
 Somalia, Mogadiscio
 340 mm



synonyms:

- *Tutufela bardeyi* F.P. Jousseaume, 1881
- *Bursa rubeta gigantea* E.A. Smith, 1914

- *Tutufa rubeta gigantea* E.A. Smith, 1914



1730300030
**Tutufa
 bubo**
 (C. Linnaeus, 1758)
 Philippines, Bantayan Island
 260 mm



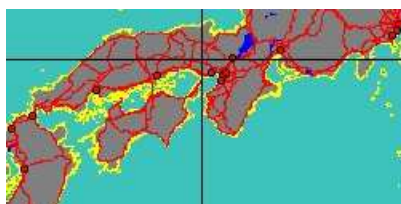
synonyms:

- *Tutufa lampas* C. Linnaeus, 1758
- *Tutufa rana bubo* C. Linnaeus, 1758

- *Murex rana bubo* C. Linnaeus, 1758
- *Tutufa rubeta* E.A. Smith, 1914



1730004025
**Tutufa
 bufo**
 (P.F. Röding, 1798)
 Japan, Wakayama
 103,2 mm



synonyms:

- *Tritonium bufo* P.F. Röding, 1798

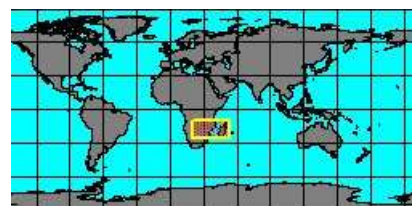
- *Tutufa lampas* T. Iwakawa, 1900



5248000002
**Tutufa
 bufo
 lissostoma**
 E.A. Smith, 1914
 Kerala, India
 80,3 mm



1730300401
**Tutufa
 bufo
 robusta**
 T. Cossignani, 2009
 Mozambique
 94,4 mm

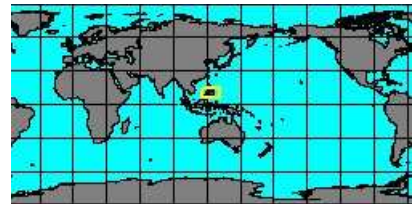
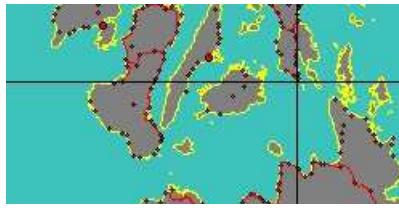


synonyms:

- *Tutufa robusta* T. Cossignani, 2009



1730300025
Tutufa
tenuigranosa
 (E.A. Smith, 1914)
 Philippines, Bohol Island
 86 mm



synonyms:

- Tutufa rubeta tenuigranosa E.A. Smith, 1914

Subgenus: Tutufa (Tutufella) A.G. Beu, 1981 (syn: Lampas - 4 SP, 4 IMG)



1730300005
Tutufella
boholica
 A.G. Beu, 1987
 Philippines, Zamboanga
 118 mm



1730300010
Tutufella
nigrita
 H. Mühlhäusser & M. Blöcher, 1979
 Mozambique, Bazaruto Island
 54,5 mm



1730300015
Tutufella
oyamai
 (T. Habe, 1973)
 Philippines, Masbate Island
 89 mm



synonyms:

- Tutufa ranelloides J.C. Melvil & R. Standen, 1899



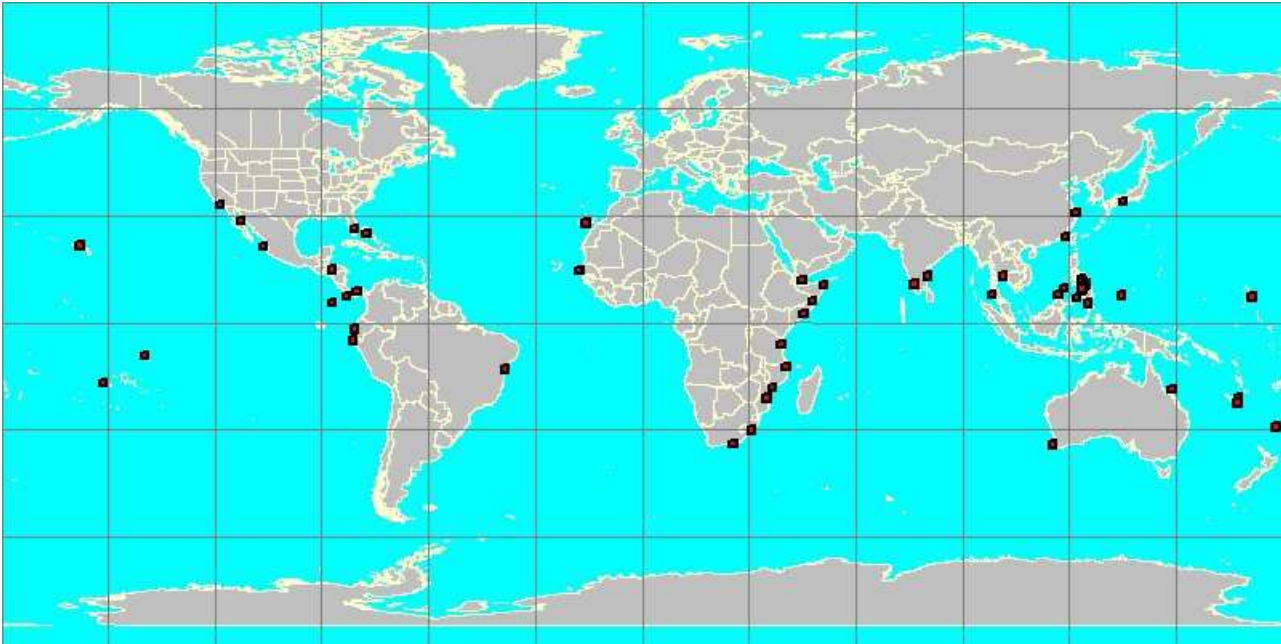
1730300020
Tutufella
rubeta
 (C. Linnaeus, 1758)
 Philippines, Balicasag Island
 95 mm



synonyms:

- Tutufella caledonensis F.P. Jousseau, 1881
- Tutufa caledonicus F.P. Jousseau, 1881
- Tutufa hians H.C.F. Schumacher, 1817
- Tutufella rana rubeta C. Linnaeus, 1758
- Tutufa rubeta C. Linnaeus, 1758
- Buccinum tuberosum P.F. Röding, 1798
- Tutufella hians H.C.F. Schumacher, 1817
- Murex rana rubeta C. Linnaeus, 1758
- Bursa rubeta C. Linnaeus, 1758
- Biplex tuberculus G. Perry, 1811
- Tritoniun tuberosum P.F. Röding, 1798

Family: BURSIDAE



red squares show where each species has been georeferenced

each square has a size of 2 degrees

an interactive version of this image can be accessed at
<http://www.bagniliggia.it/WMSD/FamilyMap/BURSIDAEmap.htm>

please note that this is not the complete coverage of this family
the Data Base is not exhaustive and only one specimen per species has been georeferenced

this map is only the graphic summary of the WMSDB Data Base up to now

the total number of georeferenced species in this map is: 80 from a total of 82