

# WMSDB - Worldwide Mollusc Species Data Base

---



## Family: CARDITIDAE

---

Author: Claudio Galli - [claudio@bagniliggia.it](mailto:claudio@bagniliggia.it) (updated 07/set/2015)

---

Class: BIVALVIA

--- Clade: HETERODONTA-ARCHIHETERODONTA-CARDITOIDEA

----- Family: **CARDITIDAE** Férussac, 1822 (Sea)

- Alphabetic order - when **first name** is in bold the species has images

Taxa=462, Genus=30, Subgenus=0, Species=146, Subspecies=6, Synonyms=279, Images=97

- abbreviata, *Pleuromeris abbreviata* G.B. Sowerby, 1903 - syn of: [Pleuromeris pygmaea](#) (J.T. Kuroda & T. Habe, 1951)
- abyssicola, [Arcturellina abyssicola](#) (R.B. Hinds, 1845)
- aculeata, [Centrocardita aculeata](#) (G.S. Poli, 1795)
- aculeata, *Glans aculeata* G.S. Poli, 1795 - syn of: [Centrocardita aculeata](#) (G.S. Poli, 1795)
- aculeata inermis, *Cardita aculeata inermis* T.A. de M. Monterosato, 1878 - syn of: [Centrocardita aculeata](#) (G.S. Poli, 1795)
- affinis, [Carditamera affinis](#) (G.B. I Sowerby, 1833)
- affinis californica, [Carditamera affinis californica](#) G.P. Deshayes, 1834
- africana, *Venericardia africana* P. Bartsch, 1915 - syn of: [Coripia elata](#) (G.B. III Sowerby, 1892)
- africanus, *Cardita africanus* F.P. Marrat, 1878 - syn of: [Cardites umbonatus](#) (G.B. III Sowerby, 1904)
- agulhasensis, [Coripia agulhasensis](#) (K.H.J. Thiele & S.G.A. Jaeckel, 1931)
- agulhasensis, *Venericardia agulhasensis* K.H.J. Thiele & S.G.A. Jaeckel, 1931 - syn of: [Coripia agulhasensis](#) (K.H.J. Thiele & S.G.A. Jaeckel, 1931)
- ajar, [Cardiocardita ajar](#) (J.G. Bruguère, 1792)
- akabana, [Centrocardita akabana](#) (R. Sturany, 1899)
- akabana, *Cardites akabana* R. Sturany, 1899 - syn of: [Centrocardita akabana](#) (R. Sturany, 1899)
- alaskana, *Venericardia alaskana* W.H. Dall, 1903 - syn of: [Cyclocardia crebricostata](#) (A. Krause, 1885)
- albida, *Cardita albida* S. Clessin, 1888 - syn of: [Cardita muricata](#) G.B. I Sowerby, 1833
- amabilis, [Purpurocardia amabilis](#) (G.P. Deshayes, 1854)
- amabilis, *Venericardia amabilis* G.P. Deshayes, 1854 - syn of: [Purpurocardia amabilis](#) (G.P. Deshayes, 1854)
- angisulcata, *Cardita angisulcata* L.A. Reeve, 1843 - syn of: [Cardites rufa](#) E.S.J.L. de Laborde & G.P. Deshayes, 1834
- angisulcata, *Cardites angisulcata* L.A. Reeve, 1843 - syn of: [Cardites rufa](#) E.S.J.L. de Laborde & G.P. Deshayes, 1834
- annakensis, [Miodontiscus annakensis](#) (T. Onomkado, 1939)
- antarctica, *Cyclocardia antarctica* E.A. Smith, 1907 - syn of: [Cyclocardia astartoides](#) (E.C. Von Martens, 1878)
- antiquata, [Cardites antiquata](#) C. Linnaeus, 1758
- antiquata, *Venericardia antiquata* C. Linnaeus, 1758 - syn of: [Cardites antiquata](#) C. Linnaeus, 1758
- antiquata arita, *Cardita antiquata arita* A. De Gregorio, 1885 - syn of: [Cardites antiquata](#) C. Linnaeus, 1758
- antiquata elata, *Cardites antiquata elata* M.E.J. Bucquoy, P. Dautzenberg & G.F. Dollfus, 1892 - syn of: [Cardites antiquata](#) C. Linnaeus, 1758
- antiquata elata, *Cardita antiquata elata* M.E.J. Bucquoy, P. Dautzenberg & G.F. Dollfus, 1892 - syn of: [Cardites antiquata](#) C. Linnaeus, 1758
- antiquata pallidior, *Cardita antiquata pallidior* M.E.J. Bucquoy, P. Dautzenberg & G.F. Dollfus, 1892 - syn of: [Cardites antiquata](#) C. Linnaeus, 1758
- antiquata ridulla, *Cardita antiquata ridulla* A. De Gregorio, 1885 - syn of: [Cardites antiquata](#) C. Linnaeus, 1758
- antiquata trapezoidea, *Cardites antiquata trapezoidea* M.E.J. Bucquoy, P. Dautzenberg & G.F. Dollfus, 1892 - syn of: [Cardites antiquata](#) C. Linnaeus, 1758
- antiquata trapezoidea, *Venericardia antiquata trapezoidea* M.E.J. Bucquoy, P. Dautzenberg & G.F. Dollfus, 1892 - syn of: [Cardites antiquata](#) C. Linnaeus, 1758
- [antiquata](#) C. Linnaeus, 1758
- [antiquata trapezoidea](#), *Cardita antiquata trapezoidea* M.E.J. Bucquoy, P. Dautzenberg & G.F. Dollfus, 1892 - syn of: [Cardites antiquata](#) C. Linnaeus, 1758
- aoteana, [Cardita distorta aoteana](#) H.J. Finlay, 1927
- arata, [Carditamera arata](#) (T.A. Conrad, 1838)
- arcella, *Cardites arcella* A. Valenciennes in A. Dupetit-Thouars, 1846 - syn of: [Cardites laticostatus](#) (G.B. I Sowerby, 1833)
- armilla, [Pleuromeris armilla](#) (W.H. Dall, 1903)
- armilla, *Venericardia armilla* W.H. Dall, 1903 - syn of: [Pleuromeris armilla](#) (W.H. Dall, 1903)
- astartoides, [Cyclocardia astartoides](#) (E.C. Von Martens, 1878)
- atkinsoni, *Cardita atkinsoni* J.E. Tenison-Woods, 1876 - syn of: [Purpurocardia bimaculata](#) (G.P. Deshayes, 1854)
- australis, *Venericardia australis* J.R.C. Quoy & J.P. Gaimard, 1835 - syn of: [Purpurocardia purpurata](#) (G.P. Deshayes, 1854)
- australis, *Cardita australis* R.A. Philippi, 1858 - syn of: [Carditella naviformis](#) (L.A. Reeve, 1843)
- australis, *Cardites australis* W. Wood, 1828 - syn of: [Cardiocardita tankervillei](#) (W. Wood, 1828)
- aviculina, [Cardita aviculina](#) J.B.P.A. Lamarck, 1819
- aviculina excavata, [Cardita aviculina excavata](#) G.P. Deshayes, 1854
- bailyi, [Cyclocardia bailyi](#) (J.Q. Burch, 1944)
- bajaensis, [Carditamera bajaensis](#) González & G. Giribet, 2012
- barborensis, [Cyclocardia barborensis](#) (R.E.C. Stearns, 1890)
- beddomei, *Cardita beddomei* E.A. Smith, 1885 - syn of: [Purpurocardia amabilis](#) (G.P. Deshayes, 1854)
- beebei, [Cyclocardia beebei](#) (L.G. Hertlein, 1958)
- belcheri, [Centrocardita belcheri](#) (G.P. Deshayes, 1854)
- benthicola, [Pleuromeris benthicola](#) A.W.B. Powell, 1937
- bicolor, [Cardites bicolor](#) (J.B.P.A. Lamarck, 1819)
- bicolor, *Cardita bicolor* J.B.P.A. Lamarck, 1819 - syn of: [Cardites bicolor](#) (J.B.P.A. Lamarck, 1819)
- bicolor rostrata, *Venericardia bicolor rostrata* É. Lamy, 1922 - syn of: [Cardites bicolor](#) (J.B.P.A. Lamarck, 1819)
- bimaculata, [Purpurocardia bimaculata](#) (G.P. Deshayes, 1854)
- bimaculata, *Cardita bimaculata* G.P. Deshayes, 1854 - syn of: [Purpurocardia bimaculata](#) (G.P. Deshayes, 1854)

- **bollonsi**, *Venericardia bollonsi* H.H. Suter, 1907 – syn of: [Pleuromeris zelandica](#) (G.P. Deshayes, 1854)
- **bollonsi**, *Pleuromeris bollonsi* H.H. Suter, 1907 – syn of: [Pleuromeris zelandica](#) (G.P. Deshayes, 1854)
- **borealis**, [Cyclocardia borealis](#) (T.A. Conrad, 1832)
- **borealis crebricostata**, *Cyclocardia borealis crebricostata* A. Krause, 1885 – syn of: [Cyclocardia crebricostata](#) (A. Krause, 1885)
- **borealis novangliae**, *Cyclocardia borealis novangliae* E.S. Morse, 1869 – syn of: [Cyclocardia novangliae](#) E.S. Morse, 1869
- **borealis ovata**, *Cyclocardia borealis ovata* Rabinina, 1952 – syn of: [Cyclocardia ovata](#) (Rabinina, 1952)
- **borealis paucicostata**, *Cardita borealis paucicostata* A. Krause, 1885 – syn of: [Cyclocardia crassidens](#) (W.J. Broderip & G.B. I Sowerby, 1829)
- **broderipi**, *Carditamera broderipi* S. Clessin, 1888 – syn of: [Carditamera gracilis](#) (R.J. Shuttleworth, 1856)
- **brookesi**, [Powellina brookesi](#) (H.J. Finlay, 1926)
- **caliculaeformis**, [Cardita caliculaeformis](#) G.P. Deshayes in L. Maillard, 1863
- **californica**, [Carditamera affinis californica](#) G.P. Deshayes, 1834
- **calva**, [Cyclocardia calva](#) R. Tate, 1887
- **calyculaeformis**, *Cardita calyculaeformis* E.C. Von Martens, 1880 – syn of: [Cardita caliculaeformis](#) G.P. Deshayes in L. Maillard, 1863
- **calyculata**, [Cardita calyculata](#) (C. Linnaeus, 1758)
- **calyculata**, *Cardita calyculata* I. von Born, 1778 – syn of: [Cardita variegata](#) J.G. Bruguière, 1792
- **calyculata decurtata**, [Cardita calyculata decurtata](#) T.A. de M. Monterosato, 1884
- **calyculata imperans**, *Cardita calyculata imperans* A. De Gregorio, 1885 – syn of: [Cardita calyculata](#) (C. Linnaeus, 1758)
- **calyculata oblonga**, *Cardita calyculata oblonga* E. Réquien, 1848 – syn of: [Cardita calyculata](#) (C. Linnaeus, 1758)
- **calyculata oblonga**, *Cardita calyculata oblonga* M.E.J. Bucquoy, P. Dautzenberg & G.F. Dollfus, 1892 – syn of: [Cardita calyculata](#) (C. Linnaeus, 1758)
- **calyculata obsoleta**, *Cardita calyculata obsoleta* P. Dautzenberg, 1883 – syn of: [Cardita calyculata](#) (C. Linnaeus, 1758)
- **calyculata obsoleta**, *Cardita calyculata obsoleta* P.M. Palfrey, 1938 – syn of: [Cardita calyculata](#) (C. Linnaeus, 1758)
- **calyculata obsoleta**, *Cardita calyculata obsoleta* E. Réquien, 1848 – syn of: [Cardita calyculata](#) (C. Linnaeus, 1758)
- **calyculata obtusata**, *Cardita calyculata obtusata* M.E.J. Bucquoy, P. Dautzenberg & G.F. Dollfus, 1892 – syn of: [Cardita calyculata](#) (C. Linnaeus, 1758)
- **calyculata obtusata**, *Cardita calyculata obtusata* M.E.J. Bucquoy, P. Dautzenberg & G.F. Dollfus, 1892 – syn of: [Cardita calyculata](#) (C. Linnaeus, 1758)
- **calyculata pita**, *Cardita calyculata pita* A. De Gregorio, 1885 – syn of: [Cardita calyculata](#) (C. Linnaeus, 1758)
- **calyculata senegalensis**, *Cardita calyculata senegalensis* L.A. Reeve, 1843 – syn of: [Cardita senegalensis](#) L.A. Reeve, 1843
- **calyculata tirisa**, *Cardita calyculata tirisa* A. De Gregorio, 1885 – syn of: [Cardita calyculata](#) (C. Linnaeus, 1758)
- **calyculata unicolor**, *Cardita calyculata unicolor* M.E.J. Bucquoy, P. Dautzenberg & G.F. Dollfus, 1892 – syn of: [Cardita calyculata](#) (C. Linnaeus, 1758)
- **canaliculata**, [Cardites canaliculata](#) L.A. Reeve, 1843
- **cardioides**, *Venericardia cardioides* K.L. Lamprell & T. Whitehead, 1992 – syn of: [Centrocardita squamigera](#) (G.P. Deshayes, 1832)
- **cardioides**, *Cardita cardioides* L.A. Reeve, 1843 – syn of: [Cardites canaliculata](#) L.A. Reeve, 1843
- **cardioides**, *Cardites cardioides* L.A. Reeve, 1843 – syn of: [Cardites canaliculata](#) L.A. Reeve, 1843
- **carpenteri**, [Glans carpenteri](#) (É. Lamy, 1922)
- **carpenteri subquadrata**, [Glans carpenteri subquadrata](#) P.P. Carpenter, 1864
- **castanea**, [Cardita castanea](#) G.P. Deshayes, 1854
- **castoruca**, *Cardites castoruca* H. Adams & A. Adams, 1857 – syn of: [Cardites rufa](#) E.S.J.L. de Laborde & G.P. Deshayes, 1834
- **cavatica**, [Purpurocardia cavatica](#) (C. Hedley, 1902)
- **chinensis**, [Megacardita chinensis](#) F.S. Xu, 2012
- **cipangoana**, *Venericardia cipangoana* M. Yokoyama, 1920 – syn of: [Megacardita ferruginosa](#) (A. Adams & L.A. Reeve, 1850)
- **cipangoana**, *Megacardita cipangoana* M. Yokoyama, 1920 – syn of: [Megacardita ferruginosa](#) (A. Adams & L.A. Reeve, 1850)
- **citrina**, *Cardita citrina* J.B.P.A. Lamarck, 1819 – syn of: [Cardita aviculina](#) J.B.P.A. Lamarck, 1819
- **columnaria**, [Venericardia columnaria](#) C. Hedley & W.L. May, 1908
- **compressa**, [Cyclocardia compressa](#) (L.A. Reeve, 1843)
- **concamerata**, [Thecalia concamerata](#) (J.G. Bruguière, 1792)
- **concamerata**, *Thecalia concamerata* J.F. Gmelin, 1791 – syn of: [Thecalia concamerata](#) (J.G. Bruguière, 1792)
- **concinna**, [Carditellopsis concinna](#) (J.C. MeVill, 1918)
- **conferta**, [Arcturellina conferta](#) (E.A. Smith, 1906)
- **congelascens**, [Cyclocardia congelascens](#) (J.C. MeVill & R. Standen, 1912)
- **conradi**, *Carditamera conradi* R.J. Shuttleworth, 1856 – syn of: [Cardites floridanus](#) (T.A. Conrad, 1838)
- **contigua**, [Carditamera contigua](#) (P. Dautzenberg, 1910)
- **cooperi**, [Cardites cooperi](#) (J.C. MeVill, 1909)
- **corbiculaeformis**, *Cardita corbiculaeformis* G.W. Tryon, 1872 – syn of: [Cardita caliculaeformis](#) G.P. Deshayes in L. Maillard, 1863
- **corbis**, [Coripia corbis](#) (R.A. Philippi, 1836)
- **corbis**, *Pteromeris corbis* R.A. Philippi, 1836 – syn of: [Coripia corbis](#) (R.A. Philippi, 1836)
- **coreensis**, [Megacardita coreensis](#) (G.P. Deshayes, 1854)
- **crassa**, *Cardites crassa* G.B. Sowerby, 1839 – syn of: [Cardites grayi](#) (W.H. Dall, 1903)
- **crassicosta**, *Mytilicardia crassicosta* J.B.P.A. Lamarck, 1819 – syn of: [Cardita crassicosta](#) J.B.P.A. Lamarck, 1819
- **crassicosta**, [Cardita crassicosta](#) J.B.P.A. Lamarck, 1819
- **crassicostata**, *Venericardia crassicostata* G.B. I Sowerby, 1825 – syn of: [Cardites crassicostatus](#) (G.B. I Sowerby, 1825)
- **crassicostata**, *Cardita crassicostata* L.A. Reeve, 1843 – syn of: [Cardita crassicosta](#) J.B.P.A. Lamarck, 1819
- **crassicostatus**, [Cardites crassicostatus](#) (G.B. I Sowerby, 1825)
- **crassidens**, [Cyclocardia crassidens](#) (W.J. Broderip & G.B. I Sowerby, 1829)
- **crebricostata**, [Cyclocardia crebricostata](#) (A. Krause, 1885)
- **crebricostata nomensis**, *Cardita crebricostata nomensis* Mc Neil, 1943 – syn of: [Cyclocardia crebricostata](#) (A. Krause, 1885)
- **cumingiana**, *Cardita cumingiana* R.W. Dunker, 1860 – syn of: [Cardita leana](#) R.W. Dunker, 1860
- **cumingii**, [Cardites cumingii](#) (G.P. Deshayes, 1854)

- *cumingii*, *Cardita cumingii* G.P. Deshayes, 1854 - syn of: [Cardites cumingii](#) (G.P. Deshayes, 1854)
- *cuvieri*, *Cardites cuvieri* W.J. Broderip, 1832 - syn of: [Cardites crassicostratus](#) (G.B. I Sowerby, 1825)
- *dactylus*, *Cardita dactylus* S. Clessin, 1888 - syn of: [Carditamera gracilis](#) (R.J. Shuttleworth, 1856)
- *dactylus*, *Carditamera dactylus* S. Clessin, 1888 - syn of: [Carditamera gracilis](#) (R.J. Shuttleworth, 1856)
- *decemcostata*, *Pleuromeris decemcostata* T.A. Conrad, 1867 - syn of: [Pleuromeris tridentata](#) (T. Say, 1826)
- *decurtata*, [Cardita calyculata decurtata](#) T.A. de M. Monterosato, 1884
- *delicatum*, *Venericardia delicatum* J.C. Verco, 1908 - syn of: [Purpurocardia amabilis](#) (G.P. Deshayes, 1854)
- *depressa*, [Megacardita depressa](#) (J.B.P.A. Lamarck, 1819)
- *difficilis*, *Venericardia difficilis* G.P. Deshayes, 1854 - syn of: [Purpurocardia purpurata](#) (G.P. Deshayes, 1854)
- *dilecta excelsior*, *Venericardia dilecta excelsior* J.C. Verco, 1908 - syn of: [Vimentum dilectum](#) (E.A. Smith, 1885)
- *dilectum*, [Vimentum dilectum](#) (E.A. Smith, 1885)
- *distorta*, [Cardita distorta](#) L.A. Reeve, 1843
- *distorta aoteana*, [Cardita distorta aoteana](#) H.J. Finlay, 1927
- *dominguensis*, [Glans dominguensis](#) (D'Orbigny, 1853)
- *donghaiensis*, [Glans donghaiensis](#) F.S. Xu, 2012
- *echinaria*, [Centrocardita echinaria](#) (J.C. Melville & R. Standen, 1907)
- *elata*, [Coripia elata](#) (G.B. III Sowerby, 1892)
- *elata*, *Venericardia elata* G.B. III Sowerby, 1892 - syn of: [Coripia elata](#) (G.B. III Sowerby, 1892)
- *elegans*, *Centrocardita elegans* E. Réquien, 1848 - syn of: [Centrocardita aculeata](#) (G.S. Poli, 1795)
- *elegans*, *Cardita elegans* E. Réquien, 1848 - syn of: [Centrocardita aculeata](#) (G.S. Poli, 1795)
- *elegans*, *Cardita elegans* E. Réquien, 1848 - syn of: [Centrocardita aculeata](#) (G.S. Poli, 1795)
- *elegantula*, [Arcturellina elegantula](#) (G.P. Deshayes, 1854)
- *elegantula*, [Carditellopsis elegantula](#) (R. Tate & W.L. May, 1901)
- *elegantula conferta*, *Arcturellina elegantula conferta* E.A. Smith, 1906 - syn of: [Arcturellina conferta](#) (E.A. Smith, 1906)
- *elongata*, *Cardita elongata* C.F. Fontannes, 1882 - syn of: [Cardita calyculata](#) (C. Linnaeus, 1758)
- *erimoensis*, *Cyclocardia erimoensis* R. Tiba, 1972 - syn of: [Cyclocardia rjabinae](#) (O.A. Scarlato, 1955)
- *essingtonensis*, *Cardita essingtonensis* G.P. Deshayes, 1854 - syn of: [Cardita pica](#) L.A. Reeve, 1843
- *excavata*, [Cardita aviculina excavata](#) G.P. Deshayes, 1854
- *excelsior*, *Venericardia excelsior* J.C. Verco, 1908 - syn of: [Vimentum dilectum](#) (E.A. Smith, 1885)
- *excelsior leguleja*, *Venericardia excelsior leguleja* T. Iredale, 1925 - syn of: [Vimentum dilectum](#) (E.A. Smith, 1885)
- *excelsior semota*, *Venericardia excelsior semota* T. Iredale, 1925 - syn of: [Vimentum dilectum](#) (E.A. Smith, 1885)
- *excisa*, [Cardita excisa](#) R.A. Philippi, 1847
- *fabula*, *Cardita fabula* L.A. Reeve, 1843 - syn of: [Cardita calyculata](#) (C. Linnaeus, 1758)
- *ferruginea orbicularis*, *Cyclocardia ferruginea orbicularis* K. Ogasawara, 1977 - syn of: [Cyclocardia nipponensis](#) M. Huber, 2010
- *ferruginosa*, [Megacardita ferruginosa](#) (A. Adams & L.A. Reeve, 1850)
- *ferruginosa koreana*, *Megacardita ferruginosa koreana* T. Habe & K. Itô, 1965 - syn of: [Megacardita koreana](#) T. Habe & K. Itô, 1965
- *ffinchi*, [Cardita ffinchi](#) (J.C. Melville, 1898)
- *ffinchi*, *Cardita ffinchi* J.C. Melville, 1898 - syn of: [Cardita ffinchi](#) (J.C. Melville, 1898)
- *flabella*, *Pteromeris flabella* T.A. Conrad, 1846 - syn of: [Pteromeris perplana](#) (T.A. Conrad, 1841)
- *flammea*, *Cardita flammea* J.L.H. Michelin, 1831 - syn of: [Strophocardia megastropa](#) (J.E. Gray, 1825)
- *flammea*, *Venericardia flammea* J.L.H. Michelin, 1831 - syn of: [Strophocardia megastropa](#) (J.E. Gray, 1825)
- *floridanus*, [Cardites floridanus](#) (T.A. Conrad, 1838)
- *floridanus*, *Cardita floridanus* T.A. Conrad, 1838 - syn of: [Cardites floridanus](#) (T.A. Conrad, 1838)
- *floridanus alba*, *Cardita floridanus alba* F.P. Jousseau in É. Lamy, 1922 - syn of: [Cardites floridanus](#) (T.A. Conrad, 1838)
- *formosa*, *Cardita formosa* W.H. Turton, 1932 - syn of: [Coripia agulhasensis](#) (K.H.J. Thiele & S.G.A. Jaeckel, 1931)
- *formosula*, *Cardita formosula* É.A.A. Locard, 1892 - syn of: [Cardita calyculata](#) (C. Linnaeus, 1758)
- *fortisculpta*, [Coripia fortisculpta](#) (K.H. Barnard, 1964)
- *gabonensis*, [Cardiocardita gabonensis](#) R. von Cosel, 1995
- *gemmaifera*, *Cardita gemmaifera* R. Tate, 1892 - syn of: [Purpurocardia amabilis](#) (G.P. Deshayes, 1854)
- *gibbosa*, *Carditamera gibbosa* L.A. Reeve, 1843 - syn of: [Cardites floridanus](#) (T.A. Conrad, 1838)
- *gibbosa*, *Cardita gibbosa* L.A. Reeve, 1843 - syn of: [Cardites floridanus](#) (T.A. Conrad, 1838)
- *godeffroyi*, *Cardita godeffroyi* R.W. Dunker, 1871 - syn of: [Purpurocardia bimaculata](#) (G.P. Deshayes, 1854)
- *gouldii*, [Cyclocardia gouldii](#) (W.H. Dall, 1903)
- *gracilis*, [Carditamera gracilis](#) (R.J. Shuttleworth, 1856)
- *gracilis*, *Cardita gracilis* R.J. Shuttleworth, 1856 - syn of: [Carditamera gracilis](#) (R.J. Shuttleworth, 1856)
- *granulata rjabinae*, *Venericardia granulata rjabinae* O.A. Scarlato, 1955 - syn of: [Cyclocardia rjabinae](#) (O.A. Scarlato, 1955)
- *grayi*, [Cardites grayi](#) (W.H. Dall, 1903)
- *grayi*, *Cardita grayi* W.H. Dall, 1903 - syn of: [Cardites grayi](#) (W.H. Dall, 1903)
- *guanica*, [Pteromeris guanica](#) (A.A. Olsson, 1961)
- *gubernaculum*, [Beguina gubernaculum](#) (L.A. Reeve, 1843)
- *gunnii*, [Centrocardita gunnii](#) (G.P. Deshayes, 1854)
- *halioticola*, *Milneria halioticola* W.H. Dall, 1871 - syn of: [Milneria minima](#) (W.H. Dall, 1871)
- *hawaiiensis*, [Cardita hawaiiensis](#) (W.H. Dall, P. Bartsch & H.A. Rehder, 1938)
- *hilli*, *Cyclocardia hilli* G. Willett, 1944 - syn of: [Cyclocardia ventricosa](#) (A.A. Gould, 1850)
- *hirasei*, [Centrocardita hirasei](#) (W.H. Dall, 1918)

- **incerta**, *Cardita incerta* S. Clessin, 1888 – syn of: [Carditamera affinis](#) (G.B. I Sowerby, 1833)
- **incerta**, *Carditamera incerta* S. Clessin, 1888 – syn of: [Carditamera affinis](#) (G.B. I Sowerby, 1833)
- **incisa**, [Cyclocardia incisa](#) (W.H. Dall, 1903)
- **incrassata**, [Megacardita incrassata](#) G.B. I Sowerby, 1825
- **incrassata**, *Cardita incrassata* T.A. Conrad, 1832 – syn of: [Cardites floridanus](#) (T.A. Conrad, 1838)
- **incurva**, *Pteromeris incurva* J.G. Jeffreys, 1874 – syn of: [Coripia jozinae](#) (J.J. Van Aartsen, 1985)
- **infans**, [Carditellopsis infans](#) (E.A. Smith, 1885)
- **inflata**, *Cardita inflata* S. Clessin, 1888 – syn of: [Cardita variegata](#) J.G. Bruguière, 1792
- **inquinata**, [Centrocardita inquinata](#) (M. Nicklés, 1955)
- **insignis**, [Vimentum insignis](#) (E.A. Smith, 1885)
- **intermedia**, *Cardites intermedia* G.B. Brocchi, 1814 – syn of: [Cardites antiquata](#) C. Linnaeus, 1758
- **intermedia**, *Cyclocardia intermedia* K.H.J. Thiele, 1912 – syn of: [Cyclocardia astartoides](#) (E.C. Von Martens, 1878)
- **irregularis**, *Beguina irregularis* S. Clessin, 1888 – syn of: [Beguina semiorbiculata](#) (C. Linnaeus, 1758)
- **irregularis**, *Cardita irregularis* S. Clessin, 1888 – syn of: [Beguina semiorbiculata](#) (C. Linnaeus, 1758)
- **isaotakii**, [Cyclocardia isaotakii](#) (R. Tiba, 1972)
- **jozinae**, [Coripia jozinae](#) (J.J. Van Aartsen, 1985)
- **jozinae**, *Pteromeris jozinae* J.J. Van Aartsen, 1985 – syn of: [Coripia jozinae](#) (J.J. Van Aartsen, 1985)
- **jukesi**, *Cardita jukesi* G.P. Deshayes, 1854 – syn of: [Cardites rufa](#) E.S.J.L. de Laborde & G.P. Deshayes, 1834
- **jukesi**, *Cardites jukesi* G.P. Deshayes, 1854 – syn of: [Cardites rufa](#) E.S.J.L. de Laborde & G.P. Deshayes, 1834
- **kelseyi**, [Milneria kelseyi](#) W.H. Dall, 1916
- **kiiensis**, *Cardita kiiensis* G.B. III Sowerby, 1913 – syn of: [Megacardita ferruginosa](#) (A. Adams & L.A. Reeve, 1850)
- **kiiensis**, *Venericardia kiiensis* G.B. III Sowerby, 1913 – syn of: [Megacardita ferruginosa](#) (A. Adams & L.A. Reeve, 1850)
- **kiiensis**, *Megacardita kiiensis* G.B. III Sowerby, 1913 – syn of: [Megacardita ferruginosa](#) (A. Adams & L.A. Reeve, 1850)
- **koreana**, [Megacardita koreana](#) T. Habe & K. Itô, 1965
- **kyushuensis**, [Cardita kyushuensis](#) (T.A. Okutani, 1963)
- **kyushuensis**, *Glans kyushuensis* T.A. Okutani, 1963 – syn of: [Cardita kyushuensis](#) (T.A. Okutani, 1963)
- **lacunosa**, [Cardiocardita lacunosa](#) (L.A. Reeve, 1843)
- **laticosta**, *Cardita laticosta* D'Orbigny, 1845 – syn of: [Cardites laticostatus](#) (G.B. I Sowerby, 1833)
- **laticostatus**, [Cardites laticostatus](#) (G.B. I Sowerby, 1833)
- **laticostatus**, *Cardita laticostatus* G.B. I Sowerby, 1833 – syn of: [Cardites laticostatus](#) (G.B. I Sowerby, 1833)
- **latuscula**, [Pleuromeris latuscula](#) A.W.B. Powell, 1937
- **latuscula benthicola**, *Pleuromeris latuscula benthicola* A.W.B. Powell, 1937 – syn of: [Pleuromeris benthicola](#) A.W.B. Powell, 1937
- **laxa**, *Cardita laxa* É.A.A. Locard, 1886 – syn of: [Cardites antiquata](#) C. Linnaeus, 1758
- **laxa**, *Cardites laxa* É.A.A. Locard, 1886 – syn of: [Cardites antiquata](#) C. Linnaeus, 1758
- **laysana**, *Cardita laysana* W.H. Dall, P. Bartsch & H.A. Rehder, 1938 – syn of: [Cardita hawaiiensis](#) (W.H. Dall, P. Bartsch & H.A. Rehder, 1938)
- **leana**, [Cardita leana](#) R.W. Dunker, 1860
- **lithophagella**, *Cardita lithophagella* J.B.P.A. Lamarck, 1819 – syn of: [Coralliophaga lithophagella](#) (J.B.P.A. Lamarck, 1819)
- **longini**, *Cyclocardia longini* J.L.Jr. Bailly, 1945 – syn of: [Cyclocardia bailyi](#) (J.Q. Burch, 1944)
- **longini**, *Cardita longini* J.Q. Burch, 1944 – syn of: [Cyclocardia bailyi](#) (J.Q. Burch, 1944)
- **lutea**, *Venericardia lutea* F.W. Hutton, 1880 – syn of: [Pleuromeris zelandica](#) (G.P. Deshayes, 1854)
- **lutea**, *Pleuromeris lutea* F.W. Hutton, 1880 – syn of: [Pleuromeris zelandica](#) (G.P. Deshayes, 1854)
- **macrotheca**, *Thecalia macrotheca* A. Adams & G.F. Angas, 1864 – syn of: [Thecalia concamerata](#) (J.G. Bruguière, 1792)
- **magellanica**, *Cyclocardia magellanica* R.A. Philippi, 1898 – syn of: [Cyclocardia velutina](#) (E.A. Smith, 1881)
- **malouinae**, *Cardita malouinae* D'Orbigny, 1854 – syn of: [Carditopsis malvinae](#) (D'Orbigny, 1845)
- **malvinae**, *Cardita malvinae* D'Orbigny, 1842 – syn of: [Carditopsis malvinae](#) (D'Orbigny, 1845)
- **marmorea**, *Cardita marmorea* L.A. Reeve, 1843 – syn of: [Megacardita nodulosa](#) (J.B.P.A. Lamarck, 1819)
- **marshalli**, [Pleuromeris marshalli](#) (J. Marwick, 1924)
- **marshalli**, *Venericardia marshalli* J. Marwick, 1924 – syn of: [Pleuromeris marshalli](#) (J. Marwick, 1924)
- **martyni**, [Carditellopsis martyni](#) P.G. Oliver & H.C.G. Chesney, 1997
- **matitukensis**, *Cardita matitukensis* Slodkevitch, 1938 – syn of: [Cyclocardia crassidens](#) (W.J. Broderip & G.B. I Sowerby, 1829)
- **megastropha**, [Strophocardia megastropha](#) (J.E. Gray, 1825)
- **megastropha**, *Venericardia megastropha* J.E. Gray, 1825 – syn of: [Strophocardia megastropha](#) (J.E. Gray, 1825)
- **meridionalis**, *Miodontiscus meridionalis* W.H. Dall, 1916 – syn of: [Miodontiscus prolongatus](#) (P.P. Carpenter, 1864)
- **micella**, [Pleuromeris micella](#) A.A. Olsson & J.T.L. McGinty, 1958
- **micellus**, [Cardites micellus](#) (L. Penna-Neme, 1971)
- **micelini**, *Cardites micelini* A. Valenciennes in A. Dupetit-Thouars, 1846 – syn of: [Cardites crassicostatus](#) (G.B. I Sowerby, 1825)
- **micelini**, *Cardita micelini* A. Valenciennes, 1846 – syn of: [Cardites crassicostatus](#) (G.B. I Sowerby, 1825)
- **millegrana**, [Centrocardita millegrana](#) (S. Nomura & N. Zinbo, 1934)
- **millegrana**, *Venericardia millegrana* S. Nomura & N. Zinbo, 1934 – syn of: [Centrocardita millegrana](#) (S. Nomura & N. Zinbo, 1934)
- **minima**, [Milneria minima](#) (W.H. Dall, 1871)
- **minima**, *Cardita minima* E.A. Smith, 1904 – syn of: [Coripia agulhasensis](#) (K.H.J. Thiele & S.G.A. Jaeckel, 1931)
- **minima**, *Venericardia minima* E.A. Smith, 1904 – syn of: [Coripia agulhasensis](#) (K.H.J. Thiele & S.G.A. Jaeckel, 1931)
- **minima uniradiata**, *Cardita minima uniradiata* W.H. Turton, 1932 – syn of: [Coripia agulhasensis](#) (K.H.J. Thiele & S.G.A. Jaeckel, 1931)
- **minusimus**, *Miodontiscus minusimus* E.A. Smith, 1904 – syn of: [Coripia agulhasensis](#) (K.H.J. Thiele & S.G.A. Jaeckel, 1931)
- **minuscula**, *Glans minuscula* J. Grant & H.R. Gale, 1931 – syn of: [Glans carpenteri](#) (É. Lamy, 1922)

- **minuta**, *Cardita minuta* A. Scacchi, 1836 – syn of: [Coripia corbis](#) (R.A. Philippi, 1836)
- **moniliata**, [Cyclocardia moniliata](#) (W.H. Dall, 1903)
- **monodi**, [Megacardita monodi](#) (M. Nicklés, 1953)
- **monodi**, *Cyclocardia monodi* M. Nicklés, 1953 – syn of: [Megacardita monodi](#) (M. Nicklés, 1953)
- **morsei**, *Cyclocardia morsei* W.H. Dall, 1891 – syn of: [Cyclocardia borealis](#) (T.A. Conrad, 1832)
- **muricata**, [Cardita muricata](#) G.B. I Sowerby, 1833
- **muricata**, *Cardita muricata* K.L. Lamprell & T. Whitehead, 1992 – syn of: [Cardita pica](#) L.A. Reeve, 1843
- **nakamurai**, *Venericardia nakamurai* M. Yokoyama, 1923 – syn of: [Miodontiscus prolongatus](#) (P.P. Carpenter, 1864)
- **nakamurai annakensis**, *Miodontiscus nakamurai annakensis* T. Oinomikado, 1939 – syn of: [Miodontiscus annakensis](#) (T. Oinomikado, 1939)
- **nakamurai annakensis**, *Cardita nakamurai annakensis* T. Oinomikado, 1939 – syn of: [Miodontiscus annakensis](#) (T. Oinomikado, 1939)
- **naviformis**, *Cardita naviformis* L.A. Reeve, 1843 – syn of: [Carditella naviformis](#) (L.A. Reeve, 1843)
- **nephritica**, *Beguina nephritica* P.F. Röding, 1798 – syn of: [Beguina semiorbiculata](#) (C. Linnaeus, 1758)
- **nipponensis**, [Cyclocardia nipponensis](#) M. Huber, 2010
- **nitidus**, [Cardites nitidus](#) (L.A. Reeve, 1843)
- **nodulosa**, [Megacardita nodulosa](#) (J.B.P.A. Lamarck, 1819)
- **nodulosa**, *Cardita nodulosa* J.B.P.A. Lamarck, 1819 – syn of: [Megacardita nodulosa](#) (J.B.P.A. Lamarck, 1819)
- **nodulosa**, *Carditamera nodulosa* J.W. Mighels, 1844 – syn of: [Cardites floridanus](#) (T.A. Conrad, 1838)
- **nodulosa**, *Venericardia nodulosa* W.H. Dall, 1919 – syn of: [Cyclocardia bailyi](#) (J.Q. Burch, 1944)
- **nodulosa**, [Cyclocardia nodulosa](#) W.H. Dall, 1919
- **novangliae**, *Cyclocardia novangliae* E.S. Morse, 1869 – syn of: [Cyclocardia novangliae](#) E.S. Morse, 1869
- **novangliae**, [Cyclocardia novangliae](#) E.S. Morse, 1869
- **nuculina**, *Cardita nuculina* F. Dujardin, 1837 – syn of: [Coripia corbis](#) (R.A. Philippi, 1836)
- **nuculina**, *Pteromeris nuculina* F. Dujardin, 1837 – syn of: [Coripia corbis](#) (R.A. Philippi, 1836)
- **nuculoides**, [Coripia nuculoides](#) (K.H. Barnard, 1964)
- **obesa**, [Cardiocardita obesa](#) R. von Cosel, 1995
- **obliqua**, *Venericardia obliqua* K.J. Bush, 1885 – syn of: [Pteromeris perplana](#) (T.A. Conrad, 1841)
- **obliquissima**, *Cardita obliquissima* R. Tate, 1887 – syn of: [Propecuna obliquissima](#) (R. Tate, 1887)
- **oblonga**, *Beguina oblonga* S. Clessin, 1888 – syn of: [Beguina gubernaculum](#) (L.A. Reeve, 1843)
- **obversa**, *Carditamera obversa* O.A.L. Mörch, 1861 – syn of: [Carditamera radiata](#) (G.B. I Sowerby, 1833)
- **ovalis**, [Cardites ovalis](#) (L.A. Reeve, 1843)
- **ovata**, [Cyclocardia ovata](#) (Riabnina, 1952)
- **ovata**, *Cardita ovata* C.B. Adams, 1845 – syn of: [Chioneryx pygmaea](#) (J.B.P.A. Lamarck, 1818)
- **paeteliana**, *Cyclocardia paeteliana* S. Clessin, 1888 – syn of: [Cyclocardia spurca](#) (G.B. I Sowerby, 1833)
- **pallida**, *Cardita pallida* S. Clessin, 1888 – syn of: [Beguina gubernaculum](#) (L.A. Reeve, 1843)
- **paucicostata**, [Pleuromeris paucicostata](#) C.R. Laws, 1940
- **pectinata**, *Cardites pectinata* G.B. Brocchi, 1814 – syn of: [Cardites antiquata](#) C. Linnaeus, 1758
- **pectunculus**, [Cardita pectunculus](#) (J.G. Bruguière, 1792)
- **pectunculus**, *Carditamera pectunculus* L.A. Reeve, 1843 – syn of: [Carditamera affinis](#) (G.B. I Sowerby, 1833)
- **pectunculus**, *Cardita pectunculus* L.A. Reeve, 1843 – syn of: [Carditamera affinis](#) (G.B. I Sowerby, 1833)
- **pelseneeri**, [Arcturellina pelseneeri](#) (B. Prashad, 1932)
- **perplana**, [Pteromeris perplana](#) (T.A. Conrad, 1841)
- **perplana**, *Cardita perplana* T.A. Conrad, 1841 – syn of: [Pteromeris perplana](#) (T.A. Conrad, 1841)
- **perplana**, *Pleuromeris perplana* T.A. Conrad, 1841 – syn of: [Pteromeris perplana](#) (T.A. Conrad, 1841)
- **perplana**, *Venericardia perplana* T.A. Conrad, 1841 – syn of: [Pteromeris perplana](#) (T.A. Conrad, 1841)
- **phrenitica**, *Beguina phrenitica* I. von Born, 1778 – syn of: [Beguina semiorbiculata](#) (C. Linnaeus, 1758)
- **pica**, [Cardita pica](#) L.A. Reeve, 1843
- **picta**, *Carditamera picta* S. Clessin, 1888 – syn of: [Carditamera affinis](#) (G.B. I Sowerby, 1833)
- **picta**, *Cardita picta* S. Clessin, 1888 – syn of: [Carditamera affinis](#) (G.B. I Sowerby, 1833)
- **piltunensis**, *Cyclocardia piltunensis* Słodkevitch, 1938 – syn of: [Cyclocardia crebricostata](#) (A. Krause, 1885)
- **plata**, [Carditamera plata](#) (H.F.A. von Ihering, 1907)
- **preissii**, [Megacardita preissii](#) (K.T. Menke, 1843)
- **procera**, *Cyclocardia procera* A.A. Gould, 1850 – syn of: [Cyclocardia compressa](#) (L.A. Reeve, 1843)
- **procera**, *Cardita procera* A.A. Gould, 1850 – syn of: [Cyclocardia compressa](#) (L.A. Reeve, 1843)
- **prolongatus**, [Miodontiscus prolongatus](#) (P.P. Carpenter, 1864)
- **propelutea**, *Venericardia propelutea* B.C. Cotton, 1930 – syn of: [Purpurocardia bimaculata](#) (G.P. Deshayes, 1854)
- **pseudocardita**, [Centrocardita pseudocardita](#) (J. Poutiers, 1981)
- **pulcherrima**, [Arcturellina pulcherrima](#) (G.B. III Sowerby, 1904)
- **pulcherrima**, *Glans pulcherrima* G.B. III Sowerby, 1904 – syn of: [Arcturellina pulcherrima](#) (G.B. III Sowerby, 1904)
- **purpurata**, [Purpurocardia purpurata](#) (G.P. Deshayes, 1854)
- **purpurata**, *Venericardia purpurata* G.P. Deshayes, 1854 – syn of: [Purpurocardia purpurata](#) (G.P. Deshayes, 1854)
- **purpurata**, *Cardita purpurata* G.P. Deshayes, 1854 – syn of: [Purpurocardia purpurata](#) (G.P. Deshayes, 1854)
- **purpurata quoyi**, [Purpurocardia purpurata quoyi](#) (G.P. Deshayes, 1854)
- **pygmaea**, [Pleuromeris pygmaea](#) (J.T. Kuroda & T. Habe, 1951)
- **pygmaea**, *Venericardia pygmaea* J.T. Kuroda & T. Habe, 1951 – syn of: [Pleuromeris pygmaea](#) (J.T. Kuroda & T. Habe, 1951)
- **quadrangularis**, *Glans quadrangularis* T.A. Okutani, 2005 – syn of: [Centrocardita millegrana](#) (S. Nomura & N. Zinbo, 1934)

- **quadriangulata**, *Venericardia quadriangulata* S. Nomura & N. Zinbo, 1934 - syn of: [Centrocardita millegrana](#) (S. Nomura & N. Zinbo, 1934)
- **quadriangulata**, *Glans quadriangulata* S. Nomura & N. Zinbo, 1934 - syn of: [Centrocardita millegrana](#) (S. Nomura & N. Zinbo, 1934)
- **quoyi**, [Purpurocardia purpurata quoyi](#) (G.P. Deshayes, 1854)
- **quoyi**, *Cardita quoyi* G.P. Deshayes, 1854 - syn of: [Purpurocardia purpurata quoyi](#) (G.P. Deshayes, 1854)
- **radiata**, [Carditamera radiata](#) (G.B. I Sowerby, 1833)
- **radula**, *Cardita radula* L.A. Reeve, 1843 - syn of: [Cardita variegata](#) J.G. Bruguière, 1792
- **raouli**, [Bathycardita raouli](#) (G.F. Angas, 1872)
- **reeveana**, *Cardita reeveana* S. Clessin, 1888 - syn of: [Cardites laticostatus](#) (G.B. I Sowerby, 1833)
- **reeveana**, *Cardites reeveana* S. Clessin, 1888 - syn of: [Cardites laticostatus](#) (G.B. I Sowerby, 1833)
- **regularis**, [Lazariella regularis](#) (G.B. III Sowerby, 1913)
- **reinga**, [Purpurocardia reinga](#) (A.W.B. Powell, 1933)
- **reniformis**, *Beguina reniformis* J.F. Gmelin, 1791 - syn of: [Beguina semiorbiculata](#) (C. Linnaeus, 1758)
- **rhomboidea**, *Cardita rhomboidea* G.B. Brocchi, 1814 - syn of: [Cardites antiquata](#) C. Linnaeus, 1758
- **rhomboidea**, *Cardites rhomboidea* G.B. Brocchi, 1814 - syn of: [Cardites antiquata](#) C. Linnaeus, 1758
- **rietensis**, *Thecalia rietensis* W.H. Turton, 1932 - syn of: [Thecalia concamerata](#) (J.G. Bruguière, 1792)
- **ripensis**, [Cyclocardia ripensis](#) A.M. Popov & O.A. Scarlato, 1980
- **rjabiniinae**, [Cyclocardia rjabiniinae](#) (O.A. Scarlato, 1955)
- **rolani**, *Carditamera rolani* R. von Cosel, 1995 - syn of: [Carditamera contigua](#) (P. Dautzenberg, 1910)
- **rosulenta**, [Centrocardita rosulenta](#) (R. Tate, 1887)
- **rubicunda**, *Cardita rubicunda* K.T. Menke, 1843 - syn of: [Megacardita depressa](#) (J.B.P.A. Lamarck, 1819)
- **rudis**, *Venericardia rudis* W.H. Dall, 1903 ex J.E. Gray MS - syn of: [Cyclocardia crassidens](#) (W.J. Broderip & G.B. I Sowerby, 1829)
- **rufa**, [Cardites rufa](#) E.S.J.L. de Laborde & G.P. Deshayes, 1834
- **rufa**, *Cardita rufa* G.P. Deshayes in E.S.J.L. de Laborde & M. Linant, 1834 - syn of: [Cardites rufa](#) E.S.J.L. de Laborde & G.P. Deshayes, 1834
- **rufanensis**, *Cardita rufanensis* W.H. Turton, 1932 - syn of: [Sheldonella lateralis](#) (L.A. Reeve, 1844)
- **rufescens**, [Cardita rufescens](#) J.B.P.A. Lamarck, 1819
- **rufescens**, *Cardita rufescens* L.A. Reeve, 1843 - syn of: [Cardita rufescens](#) J.B.P.A. Lamarck, 1819
- **sagamiensis**, [Centrocardita sagamiensis](#) (J.T. Kuroda & T. Habe in T. Habe, 1961)
- **sanmartini**, [Pleuromeris sanmartini](#) M.A. Klappenbach, 1970
- **semiorbiculata**, [Beguina semiorbiculata](#) (C. Linnaeus, 1758)
- **senegalensis**, [Cardita senegalensis](#) L.A. Reeve, 1843
- **sinuata**, *Cardita sinuata* J.B.P.A. Lamarck, 1819 - syn of: [Cardita calyculata](#) (C. Linnaeus, 1758)
- **sowerbyi**, *Megacardita sowerbyi* G.P. Deshayes, 1854 - syn of: [Megacardita turgida](#) (J.B.P.A. Lamarck, 1819)
- **sowerbyi**, *Cardita sowerbyi* G.P. Deshayes, 1854 - syn of: [Megacardita turgida](#) (J.B.P.A. Lamarck, 1819)
- **soyae**, *Pleuromeris soyae* T. Habe, 1958 - syn of: [Centrocardita soyaoe](#) (T. Habe, 1958)
- **soyaoe**, [Centrocardita soyaoe](#) (T. Habe, 1958)
- **spurca**, [Cyclocardia spurca](#) (G.B. I Sowerby, 1833)
- **spurca**, *Cardita spurca* G.B. I Sowerby, 1833 - syn of: [Cyclocardia spurca](#) (G.B. I Sowerby, 1833)
- **spurca beebei**, *Cardita spurca beebei* L.G. Hertlein, 1958 - syn of: [Cyclocardia beebei](#) (L.G. Hertlein, 1958)
- **squamiferus**, *Cardita squamiferus* G.B. I Sowerby, 1825 - syn of: [Cardita crassicosta](#) J.B.P.A. Lamarck, 1819
- **squamigera**, [Centrocardita squamigera](#) (G.P. Deshayes, 1832)
- **squamigera**, *Venericardia squamigera* G.P. Deshayes, 1832 - syn of: [Centrocardita squamigera](#) (G.P. Deshayes, 1832)
- **squamosa**, *Cardita squamosa* J.B.P.A. Lamarck, 1819 - syn of: [Glans trapezia](#) (C. Linnaeus, 1767)
- **stearnsii**, *Venericardia stearnsii* W.H. Dall, 1903 - syn of: [Cyclocardia ventricosa](#) (A.A. Gould, 1850)
- **subcrassidens**, *Cardita subcrassidens* F.S. MacNeil, 1943 - syn of: [Cyclocardia crassidens](#) (W.J. Broderip & G.B. I Sowerby, 1829)
- **sublaevigatum**, *Cardita sublaevigatum* J.B.P.A. Lamarck, 1819 - syn of: [Neotrapezium sublaevigatum](#) (J.B.P.A. Lamarck, 1819)
- **subquadrata**, [Glans carpenteri subquadrata](#) P.P. Carpenter, 1864
- **sulcata**, *Cardites sulcata* J.G. Bruguière, 1792 - syn of: [Cardites antiquata](#) C. Linnaeus, 1758
- **sulcata**, *Cardita sulcata* J.G. Bruguière, 1792 - syn of: [Cardites antiquata](#) C. Linnaeus, 1758
- **sulcosa**, *Cardita sulcosa* W.H. Dall, 1903 - syn of: [Cardites crassicostatus](#) (G.B. I Sowerby, 1825)
- **sulcosa**, *Cardites sulcosa* W.H. Dall, 1903 - syn of: [Cardites crassicostatus](#) (G.B. I Sowerby, 1825)
- **sweeti**, *Vimentum sweeti* C. Hedley, 1899 - syn of: [Epicodakia sweeti](#) (C. Hedley, 1899)
- **tankervillei**, *Cardites tankervillei* W. Wood, 1828 - syn of: [Cardiocardita tankervillii](#) (W. Wood, 1828)
- **tankervillii**, [Cardiocardita tankervillii](#) (W. Wood, 1828)
- **tankervillii**, *Venericardia tankervillii* W. Wood, 1828 - syn of: [Cardiocardita tankervillii](#) (W. Wood, 1828)
- **tankervillii**, *Cardita tankervillii* W. Wood, 1828 - syn of: [Cardiocardita tankervillii](#) (W. Wood, 1828)
- **tasmanica**, *Mytilicardia tasmanica* J.E. Tenison-Woods, 1876 - syn of: [Cardita aviculina](#) J.B.P.A. Lamarck, 1819
- **tasmanica**, *Cardita tasmanica* J.E. Tenison-Woods, 1876 - syn of: [Cardita aviculina](#) J.B.P.A. Lamarck, 1819
- **thaanumi**, *Cardita thaanumi* W.H. Dall, P. Bartsch & H.A. Rehder, 1938 - syn of: [Cardita excisa](#) R.A. Philippi, 1847
- **thouarsii**, [Cyclocardia thouarsii](#) (D'Orbigny, 1845)
- **thouarsii**, *Cardita thouarsii* D'Orbigny, 1845 - syn of: [Cyclocardia thouarsii](#) (D'Orbigny, 1845)
- **toneana**, [Carditellopsis toneana](#) (M. Yokoyama, 1922)
- **trapezia**, [Glans trapezia](#) (C. Linnaeus, 1767)
- **trapezia albida**, *Cardita trapezia albida* M.E.J. Bucquoy, P. Dautzenberg & G.F. Dollfus, 1892 - syn of: [Glans trapezia](#) (C. Linnaeus, 1767)
- **trapezia pirilla**, *Cardita trapezia pirilla* A. De Gregorio, 1885 - syn of: [Glans trapezia](#) (C. Linnaeus, 1767)
- **trapezia rosea**, *Cardita trapezia rosea* M.E.J. Bucquoy, P. Dautzenberg & G.F. Dollfus, 1892 - syn of: [Glans trapezia](#) (C. Linnaeus, 1767)

- **trapezia sulphurea**, *Cardita trapezia sulphurea* M.E.J. Bucquoy, P. Dautzenberg & G.F. Dollfus, 1892 - syn of: [Glans trapezia](#) (C. Linnaeus, 1767)
  - **tricolor**, *Cardita tricolor* G.B. I Sowerby, 1833 - syn of: [Cardites laticostatus](#) (G.B. I Sowerby, 1833)
  - **tricolor**, *Cardites tricolor* G.B. I Sowerby, 1833 - syn of: [Cardites laticostatus](#) (G.B. I Sowerby, 1833)
  - **tridacnoides**, *Cardita tridacnoides* K.T. Menke, 1843 - syn of: [Cardita crassicosta](#) J.B.P.A. Lamarck, 1819
  - **tridentata**, [Pleuromeris tridentata](#) (T. Say, 1826)
  - **tridentata**, *Cardita tridentata* L.A. Reeve, 1843 - syn of: [Purpurocardia purpurata](#) (G.P. Deshayes, 1854)
  - **tumida**, *Cardita tumida* W.J. Broderip, 1832 - syn of: [Strophocardia megastropa](#) (J.E. Gray, 1825)
  - **turgida**, [Megacardita turgida](#) (J.B.P.A. Lamarck, 1819)
  - **ultima**, [Pleuromeris ultima](#) R.K. Dell, 1956
  - **umbilicata**, *Cardita umbilicata* G.P. Deshayes, 1854 - syn of: [Cardita pica](#) L.A. Reeve, 1843
  - **umbonatus**, [Cardites umbonatus](#) (G.B. III Sowerby, 1904)
  - **umnaka**, [Cyclocardia umnaka](#) (G. Willett, 1932)
  - **uruma**, *Cardita uruma* I. Hayami & T. Kase, 1993 - syn of: [Cardita kyushuensis](#) (T.A. Okutani, 1963)
  - **valida**, [Carditellopsis valida](#) (J.C. Verco, 1908)
  - **varia**, *Cardita varia* W.J. Broderip, 1832 - syn of: [Strophocardia megastropa](#) (J.E. Gray, 1825)
  - **varia**, *Strophocardia varia* W.J. Broderip, 1832 - syn of: [Strophocardia megastropa](#) (J.E. Gray, 1825)
  - **variegata**, [Cardita variegata](#) J.G. Bruguière, 1792
  - **variegata**, *Mytilicardia variegata* J.G. Bruguière, 1792 - syn of: [Cardita variegata](#) J.G. Bruguière, 1792
  - **variegata turgida**, *Cardita variegata turgida* C.F.F. von Krauss, 1848 - syn of: [Cardita caliculaeformis](#) G.P. Deshayes in L. Maillard, 1863
  - **vaughani**, [Glans vaughani](#) (J.M.R.M. Viader, 1951)
  - **velutina**, [Cyclocardia velutina](#) (E.A. Smith, 1881)
  - **velutina**, *Cardita velutina* E.A. Smith, 1881 - syn of: [Cyclocardia velutina](#) (E.A. Smith, 1881)
  - **ventricosa**, [Cyclocardia ventricosa](#) (A.A. Gould, 1850)
  - **ventricosa gouldii**, *Cyclocardia ventricosa gouldii* W.H. Dall, 1903 - syn of: [Cyclocardia gouldii](#) (W.H. Dall, 1903)
  - **ventricosa montereyensis**, *Cyclocardia ventricosa montereyensis* A.G. Smith & W.J. Gordon, 1948 - syn of: [Cyclocardia ventricosa](#) (A.A. Gould, 1850)
  - **ventricosa redondoensis**, *Cyclocardia ventricosa redondoensis* T.A. Burch, 1944 - syn of: [Cyclocardia ventricosa](#) (A.A. Gould, 1850)
  - **vestita**, *Cyclocardia vestita* G.P. Deshayes, 1854 - syn of: [Cyclocardia borealis](#) (T.A. Conrad, 1832)
  - **vinsoni**, [Cardita vinsoni](#) J.M.R.M. Viader, 1951
  - **volucris**, *Carditamera volucris* L.A. Reeve, 1843 - syn of: [Carditamera affinis](#) (G.B. I Sowerby, 1833)
  - **volucris**, *Cardita volucris* L.A. Reeve, 1843 - syn of: [Carditamera affinis](#) (G.B. I Sowerby, 1833)
  - **yatesi**, *Miodontiscus yatesi* R. Arnold, 1907 - syn of: [Miodontiscus prolongatus](#) (P.P. Carpenter, 1864)
  - **yatesi**, *Venericardia yatesi* R. Arnold, 1907 - syn of: [Miodontiscus prolongatus](#) (P.P. Carpenter, 1864)
  - **zelandica**, [Pleuromeris zelandica](#) (G.P. Deshayes, 1854)
  - **zelandica**, *Venericardia zelandica* V.L.V. Potiez & A. Michaud, 1844 - syn of: [Austrovenus stutchburyi](#) (W. Wood, 1828)
-



Class: BIVALVIA  
--- Clade: HETERODONTA-ARCHIHETERODONTA-CARDITOIDEA

----- Family: **CARDITIDAE** Férussac, 1822  
Habitat= Sea, Taxonomic order  
Taxa=462, Genus=30, Subgenus=0, Species=146, Subspecies=6, Synonyms=279, Images=97

Genus: **Carditellopsis** T. Iredale, 1936 (6 SP, 1 IMG)



712600020  
**Carditellopsis  
concinna**  
(J.C. Melvill, 1918)

No Georeferenced data available



5761500213  
**Carditellopsis  
elegantula**  
(R. Tate & W.L. May, 1901)  
Tasmania



**synonyms:**

● Hamacuna radiata C.F. Laseron, 1953

● Carditella radiata C.F. Laseron, 1953



5761500537  
**Carditellopsis  
infans**  
(E.A. Smith, 1885)  
Queensland



7126000021  
**Carditellopsis  
martyni**  
P.G. Oliver & H.C.G. Chesney, 1997

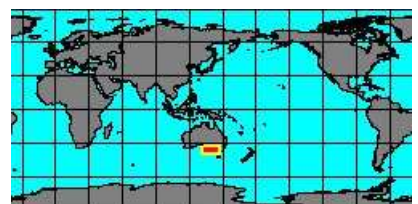
No Georeferenced data available



5761500269  
**Carditellopsis  
toneana**  
(M. Yokoyama, 1922)  
Japan, Iwate



7126000022  
**Carditellopsis  
valida**  
(J.C. Verco, 1908)  
South Australia



**synonyms:**

● Carditella valida J.C. Verco, 1908

Genus: **Centrocardita** F. Sacco, 1899 (13 SP, 10 IMG)



5760000000  
**Centrocardita  
aculeata**  
(G.S. Polj, 1795)  
Portugal  
22 mm



**synonyms:**

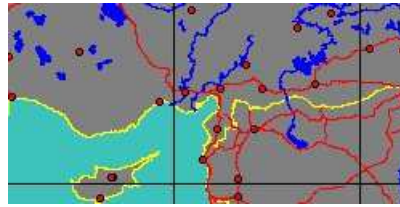
● Glans aculeata G.S. Polj, 1795  
● Chama aculeata G.S. Polj, 1795  
● Chama elegans E. Réquien, 1848  
● Cardita elegans E. Réquien, 1848

● Cardita aculeata inermis T.A. de M. Monterosato, 1878  
● Centrocardita elegans E. Réquien, 1848  
● Cardita elegans E. Réquien, 1848



5761500141  
**Centrocardita**  
**akabana**

(R. Sturany, 1899)  
Iskenderun gulf, Turkey  
15,29 mm



**synonyms:**

- *Cardites akabana* R. Sturany, 1899



7126000024  
**Centrocardita**  
**belcheri**

(G.P. Deshayes, 1854)

No Georeferenced data available



5761500543  
**Centrocardita**  
**echinaria**

(J.C. Melvill & R. Standen, 1907)

No Georeferenced data available



7126000025  
**Centrocardita**  
**gunnii**

(G.P. Deshayes, 1854)

No Georeferenced data available



5761000020  
**Centrocardita**  
**hirasei**

(W.H. Dall, 1918)  
East China Sea  
10,7 mm



5761000025  
**Centrocardita**  
**inquinata**

(M. Nicklés, 1955)  
Mauritania  
23 mm



5761000030  
**Centrocardita**  
**millegrana**

(S. Nomura & N. Zinbo, 1934)  
Philippines, Bohol Island  
26,6 mm



**synonyms:**

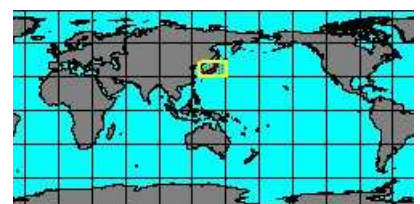
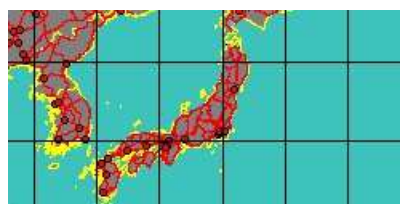
- *Venericardia millegrana* S. Nomura & N. Zinbo, 1934
- *Glans quadrangularis* T.A. Okutani, 2005
- *Glans quadrangulata* S. Nomura & N. Zinbo, 1934

- *Venericardia quadrangulata* S. Nomura & N. Zinbo, 1934



7126000026  
**Centrocardita**  
**pseudocardita**

(J. Poutiers, 1981)  
Japan  
23 mm

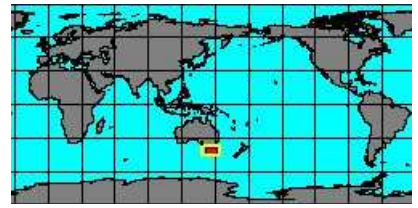




5761500453  
**Centrocardita  
rosulenta**

(R. Tate, 1887)

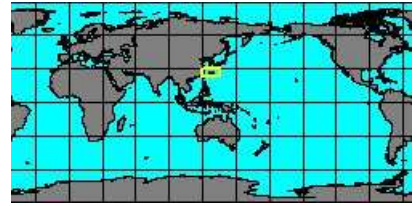
Tasmania  
35 mm



5761000040  
**Centrocardita  
sagamiensis**

(J.T. Kuroda & T. Habe in T. Habe, 1961)

Okinawa  
12 mm



5761150005  
**Centrocardita  
soyoae**

(T. Habe, 1958)

East China Sea  
11 mm



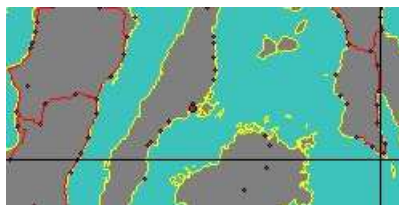
**synonyms:**

- Pleuromeris soyoae T. Habe, 1958



5761304020  
**Centrocardita  
squamigera**

(G.P. Deshayes, 1832)  
Philippines, Mactan Island  
26 mm



**synonyms:**

- Venercardia cardioides K.L. Lamprell & T. Whitehead, 1992

- Venercardia squamigera G.P. Deshayes, 1832

**Genus: Coripia** A. De Gregorio, 1885 (6 SP, 3 IMG)



7126000027  
**Coripia  
agulhasensis**  
(K.H.J. Thiele & S.G.A. Jaeckel, 1931)

**No Georeferenced data available**

**synonyms:**

- Venercardia agulhasensis K.H.J. Thiele & S.G.A. Jaeckel, 1931
- Venercardia minima E.A. Smith, 1904
- Cardita minima uniradiata W.H. Turton, 1932

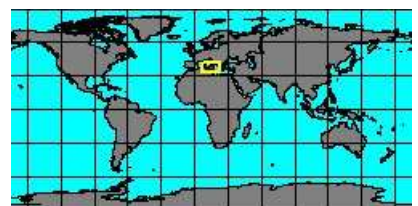
- Cardita formosa W.H. Turton, 1932
- Cardita minima E.A. Smith, 1904
- Modontiscus minimus E.A. Smith, 1904



5761250005  
**Coripia  
corbis**

(R.A. Philippi, 1836)

Italy, Cannizzaro  
4 mm



**synonyms:**

- Pteromeris corbis R.A. Philippi, 1836
- Cardita nuculina F. Dujardin, 1837

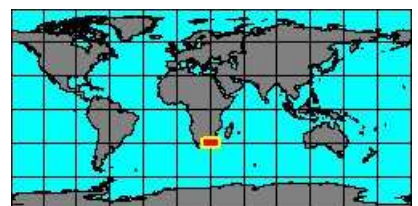
- Cardita minuta A. Scacchi, 1836
- Pteromeris nuculina F. Dujardin, 1837



7126000043  
**Coripia  
elata**

(G.B. III Sowerby, 1892)

Park Rynie, Natal, South Africa  
3 mm



**synonyms:**

- Venercardia africana P. Bartsch, 1915

- Venercardia elata G.B. III Sowerby, 1892

no  
IMAGES  
available

712600028  
**Coripia  
fortisculpta**  
(K.H. Barnard, 1964)

No Georeferenced data available



5761250000  
**Coripia  
jozinae**  
(J.J. Van Aartsen, 1985)  
Italy, Sicily Island  
3 mm



**synonyms:**

- Pteromeris incurva J.G. Jeffreys, 1874
- Pteromeris jozinae J.J. Van Aartsen, 1985

no  
IMAGES  
available

712600029  
**Coripia  
nuculoides**  
(K.H. Barnard, 1964)

No Georeferenced data available

**Genus: Powellina** M. Huber, 2010 (1 SP, 1 IMG)



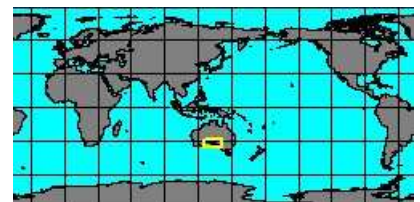
5760000010  
**Powellina  
brookesi**  
(H.J. Finlay, 1926)  
New Zealand, Leigh  
4 mm



**Genus: Purpurocardia** P.A. Maxwell, 1969 (5 SP, 5 IMG)



5761304015  
**Purpurocardia  
amabilis**  
(G.P. Deshayes, 1854)  
Australia, Smoky bay  
15 mm

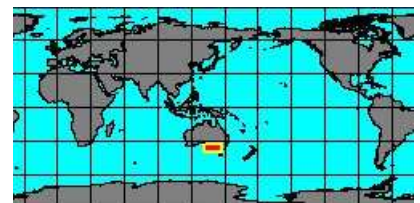


**synonyms:**

- Venericardia amabilis G.P. Deshayes, 1854
- Venericardia delicatum J.C. Verco, 1908
- Cardita beddomei E.A. Smith, 1885
- Cardita gemmulifera R. Tate, 1892



5761300005  
**Purpurocardia  
bimaculata**  
(G.P. Deshayes, 1854)  
South Australia  
13,1 mm

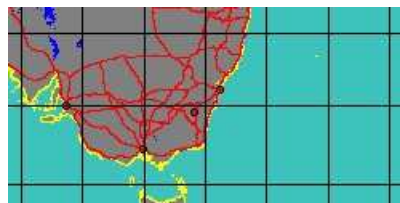


**synonyms:**

- Cardita atkinsoni J.E. Tenison-Woods, 1876
- Cardita godeffroyi R.W. Dunker, 1871
- Cardita bimaculata G.P. Deshayes, 1854
- Venericardia propelutea B.C. Cotton, 1930

no  
IMAGES  
available

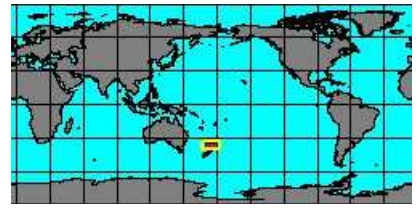
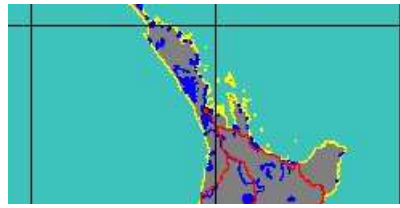
5761304025  
**Purpurocardia  
cavatica**  
(C. Hedley, 1902)  
New South Wales





5761300015  
**Purpurocardia purpurata**

(G.P. Deshayes, 1854)  
New Zealand, Auckland  
35 mm



**synonyms:**

- Venericardia australis J.R.C. Quoy & J.P. Gaimard, 1835
- Venericardia purpurata G.P. Deshayes, 1854
- Cardita tridentata L.A. Reeve, 1843
- Venericardia difficilis G.P. Deshayes, 1854
- Cardita purpurata G.P. Deshayes, 1854



5761300020  
**Purpurocardia purpurata quoyi**

(G.P. Deshayes, 1854)  
Australia, Victoria  
22,7 mm



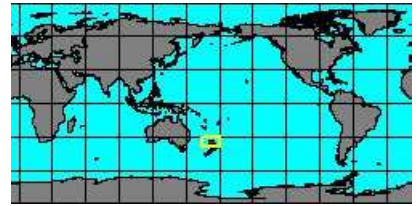
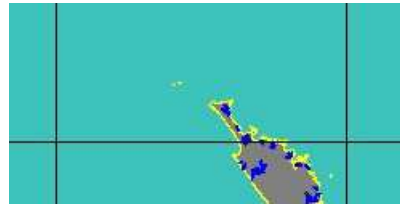
**synonyms:**

- Cardita quoyi G.P. Deshayes, 1854



5761500445  
**Purpurocardia reinga**

(A.W.B. Powell, 1933)  
New Zealand, Cape Maria van Diemen  
15 mm

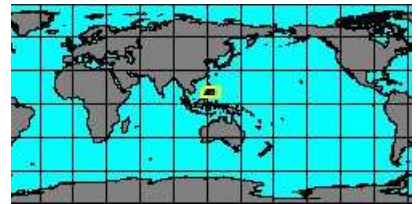
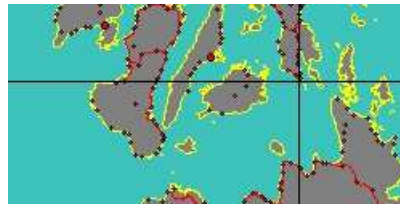


SubFamily: CARDITAMERINAE - **Genus: Arcturellina** A.L. Chavan, 1951 (syn: Arcturela - 5 SP, 3 IMG)



5761000000  
**Arcturellina abyssicola**

(R.B. Hinds, 1845)  
Philippines, Bohol Island  
27 mm



7126000003  
**Arcturellina conferta**

(E.A. Smith, 1906)

No Georeferenced data available

**synonyms:**

- Arcturellina elegantula conferta E.A. Smith, 1906



5761500553  
**Arcturellina elegantula**

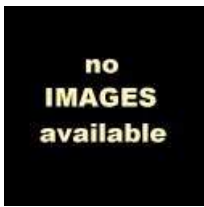
(G.P. Deshayes, 1854)  
Philippines, Mactan Island  
8,8 mm



5761500509  
**Arcturellina pelseneeri**

(B. Prashad, 1932)  
Philippines  
12 mm





5761500545  
**Arcturellina pulcherrima**  
(G.B. III Sowerby, 1904)

No Georeferenced data available

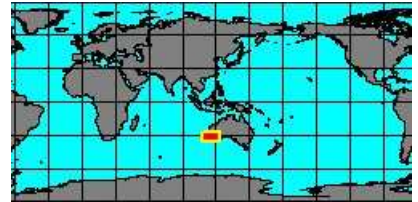
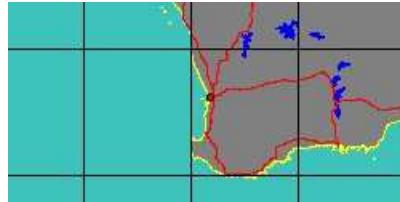
**synonyms:**

- *Glans pulcherrima* G.B. III Sowerby, 1904

SubFamily: CARDITAMERINAE - **Genus: Bathycardita** T. Iredale, 1924 (1 SP, 1 IMG)



7126000001  
**Bathycardita raouli**  
(G.F. Angas, 1872)  
Australia, Fremantle



SubFamily: CARDITAMERINAE - **Genus: Cardiocardita** H.E. Anton, 1838 (syn: *Agaria*, *Azaria*, *Cardiocardites*, *Divergidens* - 5 SP, 5 IMG)



5760250000  
**Cardiocardita ajar**  
(J.G. Bruguière, 1792)  
Liberia  
19 mm



7126000004  
**Cardiocardita gabonensis**  
R. von Cosel, 1995  
Angola  
17,3 mm



5761500077  
**Cardiocardita lacunosa**  
(L.A. Reeve, 1843)  
Angola  
13 mm



5761500526  
**Cardiocardita obesa**  
R. von Cosel, 1995  
Guinea Bissau  
17,3 mm



5760250020  
**Cardiocardita tankervillei**  
(W. Wood, 1828)  
Senegal  
48 mm



**synonyms:**

- *Chama australis* W. Wood, 1828
- *Cardites tankervillei* W. Wood, 1828
- *Cardita tankervillei* W. Wood, 1828
- *Cardites australis* W. Wood, 1828
- *Venericardia tankervillei* W. Wood, 1828

SubFamily: CARDITAMERINAE - **Genus: Carditamera** T.A. Conrad, 1838 (syn: *Lazaria*, *Byssomera* - 7 SP, 5 IMG)



576040000  
**Carditamera  
affinis**  
(G.B. I Sowerby, 1833)

Costa Rica  
42,8 mm



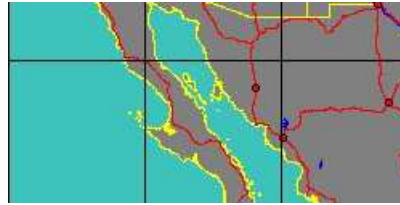
**synonyms:**

- Cardita incerta S. Clessin, 1888
- Carditamera incerta S. Clessin, 1888
- Carditamera pectunculus L.A. Reeve, 1843
- Carditamera picta S. Clessin, 1888
- Carditamera volucris L.A. Reeve, 1843
- Cardita pectunculus L.A. Reeve, 1843
- Cardita picta S. Clessin, 1888
- Cardita volucris L.A. Reeve, 1843



576040005  
**Carditamera  
affinis  
californica**  
G.P. Deshayes, 1834

Mexico, Sonora  
70,1 mm



5761500189  
**Carditamera  
arata**  
(T.A. Conrad, 1838)

No Georeferenced data available



7128000032  
**Carditamera  
bajaensis**  
González & G. Giribet, 2012  
Gulf of California



7126000008  
**Carditamera  
contigua**  
(P. Dautzenberg, 1910)

No Georeferenced data available

**synonyms:**

- Carditamera rolani R. von Cosel, 1995



5760400015  
**Carditamera  
gracilis**  
(R.J. Shuttleworth, 1856)  
Margarita Island, Venezuela  
30 mm



**synonyms:**

- Carditamera broderipi S. Clessin, 1888
- Carditamera dactylus S. Clessin, 1888
- Cardita dactylus S. Clessin, 1888
- Cardita gracilis R.J. Shuttleworth, 1856



5760400025  
**Carditamera  
plata**  
(H.F.A. von Ihering, 1907)

East America  
3,9 mm

No Georeferenced data available



576040030  
**Carditamera radiata**

(G.B. I Sowerby, 1833)

Costa Rica  
55 mm



**synonyms:**

- Carditamera obversa O.A.L. Mörch, 1861

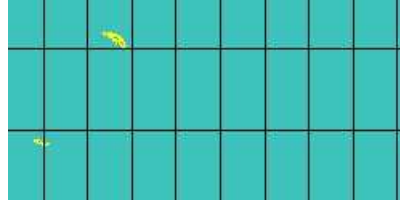
SubFamily: CARDITAMERINAE - **Genus: Cyclocardia** T.A. Conrad, 1867 (syn: Arcturus, Bendeglans, Crasscardia - 25 SP, 15 IMG)



5761500277  
**Cyclocardia astartoides**

(E.C. Von Martens, 1878)

Scotia Sea  
19 mm



**synonyms:**

- Cyclocardia antarctica E.A. Smith, 1907
- Cyclocardia intermedia K.H.J. Thiele, 1912



5760900000  
**Cyclocardia bailyi**

(J.Q. Burch, 1944)

No Georeferenced data available

**synonyms:**

- Cardita longini J.Q. Burch, 1944
- Cyclocardia longini J.L.Jr. Baily, 1945

- Venericardia nodulosa W.H. Dall, 1919



5760900005  
**Cyclocardia barborensis**

(R.E.C. Stearns, 1890)

California, Santa Barbara



5760900055  
**Cyclocardia beebei**

(L.G. Hertlein, 1958)

Cebaco Island  
16 mm



**synonyms:**

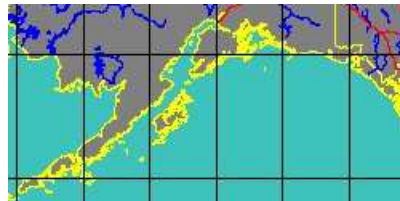
- Cardita spurca beebei L.G. Hertlein, 1958



5761300010  
**Cyclocardia borealis**

(T.A. Conrad, 1832)

Alaska  
23,2 mm



**synonyms:**

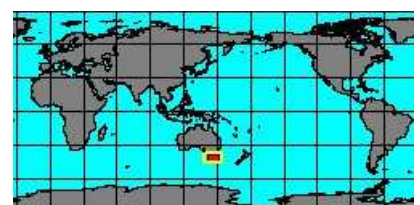
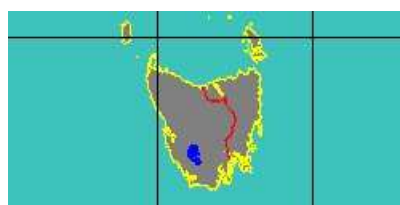
- Cyclocardia morsei W.H. Dall, 1891
- Cyclocardia vestita G.P. Deshayes, 1854



5761500293  
**Cyclocardia calva**

R. Tate, 1887

Tasmania

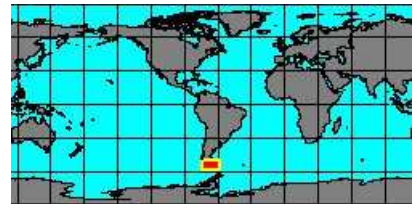
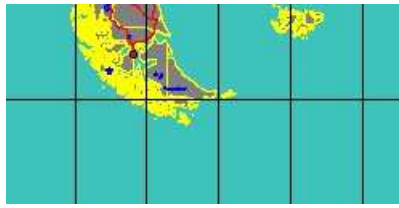






5761500522  
**Cyclocardia compressa**

(L.A. Reeve, 1843)  
Argentina, Tierra del Fuego  
10,5 mm



**synonyms:**

- Cardita procera A.A. Gould, 1850
- Cyclocardia procera A.A. Gould, 1850



5761500531  
**Cyclocardia congelascens**

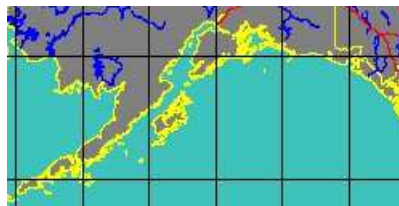
(J.C. Melvill & R. Standen, 1912)

No Georeferenced data available



5760900010  
**Cyclocardia crassidens**

(W.J. Broderip & G.B. I Sowerby, 1829)  
Alaska



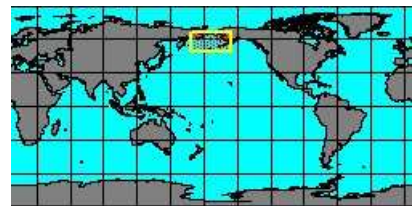
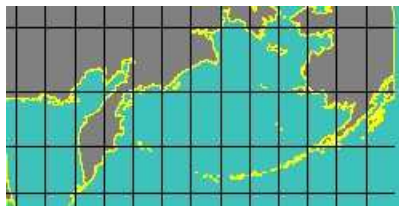
**synonyms:**

- Cardita borealis paucicostata A. Krause, 1885
- Astarte crassidens W.J. Broderip & G.B. I Sowerby, 1829
- Venericardia rudis W.H. Dall, 1903 ex J.E. Gray MS
- Cardita matitukensis Slodkevitch, 1938
- Cardita subcrassidens F.S. MacNeil, 1943



5760900015  
**Cyclocardia crebricostata**

(A. Krause, 1885)  
Bering Sea  
16 mm



**synonyms:**

- Venericardia alaskana W.H. Dall, 1903
- Cardita crebricostata nomensis Mc Neil, 1943
- Cyclocardia borealis crebricostata A. Krause, 1885
- Cyclocardia piltunensis Slodkevitch, 1938



5760900020  
**Cyclocardia gouldii**

(W.H. Dall, 1903)  
California, San Diego  
12,2 mm



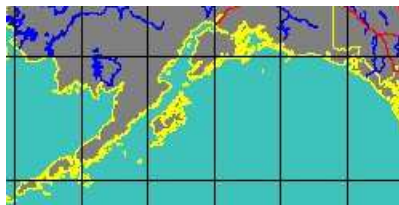
**synonyms:**

- Cyclocardia ventricosa gouldii W.H. Dall, 1903



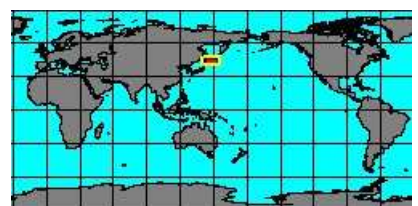
5760900025  
**Cyclocardia incisa**

(W.H. Dall, 1903)  
Alaska



5761304005  
**Cyclocardia isaotakii**

(R. Tiba, 1972)  
Habomai Islands, Japan  
32 mm





5761500317  
**Cyclocardia moniliata**  
 (W.H. Dall, 1903)  
 Brasil, Rio de Janeiro



7126000030  
**Cyclocardia nipponensis**  
 M. Huber, 2010  
 Japan, Fukushima  
 16,7 mm

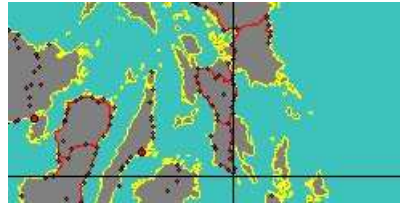


**synonyms:**

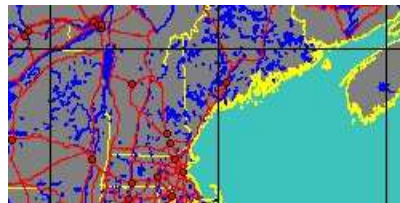
- Cyclocardia ferruginea orbicularis K. Ogasawara, 1977



5760900030  
**Cyclocardia nodulosa**  
 W.H. Dall, 1919  
 Philippines, Leyte Island  
 16,4 mm



5761500285  
**Cyclocardia novangliae**  
 E.S. Morse, 1869  
 Maine

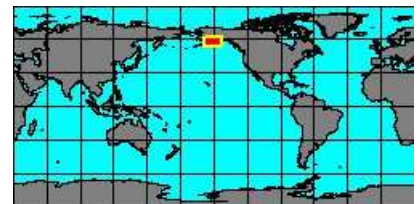
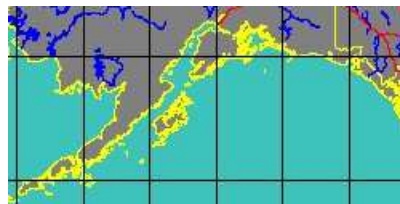


**synonyms:**

- Cyclocardia borealis novangliae E.S. Morse, 1869
- Cyclocardia novangliae E.S. Morse, 1869



5760900040  
**Cyclocardia ovata**  
 (Rabinina, 1952)  
 Alaska



**synonyms:**

- Cyclocardia borealis ovata Rabinina, 1952

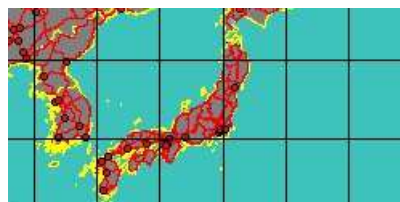


7126000031  
**Cyclocardia ripensis**  
 A.M. Popov & O.A. Scarlato, 1980

No Georeferenced data available



5760900045  
**Cyclocardia rjabininae**  
 (O.A. Scarlato, 1955)  
 Japan

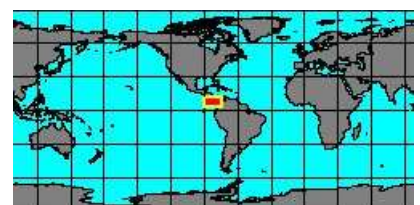


**synonyms:**

- Cyclocardia erimoensis R. Tiba, 1972
- Venericardia granulata rjabininae O.A. Scarlato, 1955



5760900050  
**Cyclocardia spurca**  
 (G.B. I Sowerby, 1833)  
 Coiba Island, Panama  
 36 mm



**synonyms:**

- Cyclocardia paetelana S. Clessin, 1888
- Cardita spurca G.B. I Sowerby, 1833



5761500532  
**Cyclocardia  
 thoursii**  
 (D'Orbigny, 1845)

No Georeferenced data available

**synonyms:**

- Cardita thoursii D'Orbigny, 1845



5760900065  
**Cyclocardia  
 umnaka**  
 (G. Willett, 1932)  
 America

No Georeferenced data available



5761500501  
**Cyclocardia  
 velutina**  
 (E.A. Smith, 1881)  
 South Argentina  
 13 mm



**synonyms:**

- Cyclocardia magellanica R.A. Philippi, 1898

- Cardita velutina E.A. Smith, 1881



5760900070  
**Cyclocardia  
 ventricosa**  
 (A.A. Gould, 1850)  
 Canada, Vancouver Island  
 20 mm



**synonyms:**

- Cyclocardia hill G. Willett, 1944
- Cyclocardia ventricosa montereyensis A.G. Smith & W.J. Gordon, 1948

- Venericardia stearnsi W.H. Dall, 1903
- Cyclocardia ventricosa redondoensis T.A. Burch, 1944

SubFamily: CARDITAMERINAE - **Genus: Glans** J.K. Megerle Von Mühfeld, 1811 (5 SP, 3 IMG)



5761000005  
**Glans  
 carpenteri**  
 (É. Lamy, 1922)  
 California, La Jolla  
 9 mm



**synonyms:**

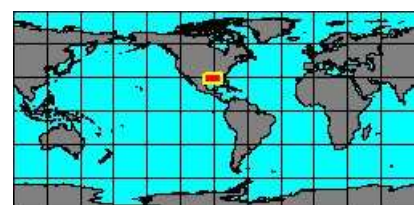
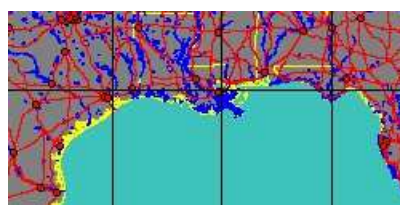
- Glans minuscula J. Grant & H.R. Gale, 1931

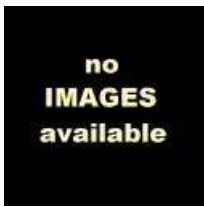


5761000045  
**Glans  
 carpenteri  
 subquadrata**  
 P.P. Carpenter, 1864  
 Colombia  
 9 mm



5761000010  
**Glans  
 dominguensis**  
 (D'Orbigny, 1853)  
 USA, Louisiana





7128000030  
**Glans**  
**donghaiensis**  
F.S. Xu, 2012

No Georeferenced data available



5761000050  
**Glans**  
**trapezia**  
(C. Linnaeus, 1767)  
Malta  
12 mm



**synonyms:**

- Chama muricata G.S. Poli, 1795
- Cardita squamosa J.B.P.A. Lamarck, 1819
- Cardita trapezia albida M.E.J. Bucquoy, P. Dautzenberg & G.F. Dollfus, 1892
- Cardita trapezia rosea M.E.J. Bucquoy, P. Dautzenberg & G.F. Dollfus, 1892

- Chama trapezia C. Linnaeus, 1767
- Cardita trapezia pirilla A. De Gregorio, 1885
- Cardita trapezia sulphurea M.E.J. Bucquoy, P. Dautzenberg & G.F. Dollfus, 1892



7126000032  
**Glans**  
**vaughani**  
(J.M.R.M. Viader, 1951)

No Georeferenced data available

SubFamily: CARDITAMERINAE - **Genus: Lazariella** F. Sacco, 1899 (1 SP, 1 IMG)



5761500518  
**Lazariella**  
**regularis**  
(G.B. III Sowerby, 1913)  
Guinea  
26 mm



SubFamily: CARDITAMERINAE - **Genus: Miodontiscus** W.H. Dall, 1903 (syn: Miodon - 2 SP, 1 IMG)



7126000037  
**Miodontiscus**  
**annakensis**  
(T. Oinomikado, 1939)

No Georeferenced data available

**synonyms:**

- Cardita nakamurai annakensis T. Oinomikado, 1939
- Miodontiscus nakamurai annakensis T. Oinomikado, 1939



5761100000  
**Miodontiscus**  
**prolongatus**  
(P.P. Carpenter, 1864)  
Washington, USA  
5 mm



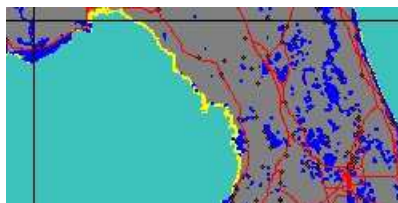
**synonyms:**

- Miodontiscus meridionalis W.H. Dall, 1916
- Venericardia yatesi R. Arnold, 1907
- Venericardia nakamurai M. Yokoyama, 1923
- Miodontiscus yatesi R. Arnold, 1907

SubFamily: CARDITAMERINAE - **Genus: Pleuomeris** T.A. Conrad, 1867 (syn: Cycloglans - 11 SP, 7 IMG)



5761150000  
**Pleuomeris**  
**armilla**  
(W.H. Dall, 1903)  
Florida, Cedar Key



**synonyms:**

- Venericardia armilla W.H. Dall, 1903

no  
IMAGES  
available

5761500357  
**Pleuromeris**  
**benthicola**

A.W.B. Powell, 1937  
New Zealand



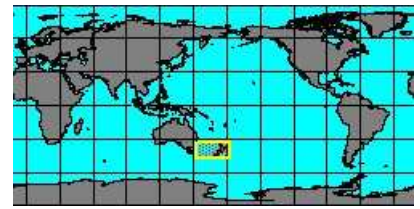
**synonyms:**

- *Pleuromeris latiuscula benthicola* A.W.B. Powell, 1937

no  
IMAGES  
available

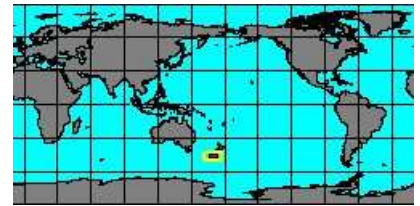
5761500514  
**Pleuromeris**  
**latiuscula**

A.W.B. Powell, 1937  
New Zealand



5761500365  
**Pleuromeris**  
**marshalli**

(J. Marwick, 1924)  
New Zealand, Otago



**synonyms:**

- *Venericardia marshalli* J. Marwick, 1924



5760400020  
**Pleuromeris**  
**micella**

A.A. Olsson & J.T.L. McGinty, 1958  
Panama, Bocas del Toro  
5 mm



5761304010  
**Pleuromeris**  
**paucicostata**

C.R. Laws, 1940  
New Zealand



no  
IMAGES  
available

5761500373  
**Pleuromeris**  
**pygmaea**

(J.T. Kuroda & T. Habe, 1951)  
Japan



**synonyms:**

- *Pleuromeris abbreviata* G.B. Sowerby, 1903
- *Venericardia pygmaea* J.T. Kuroda & T. Habe, 1951

no  
IMAGES  
available

5761500381  
**Pleuromeris**  
**sanmartini**

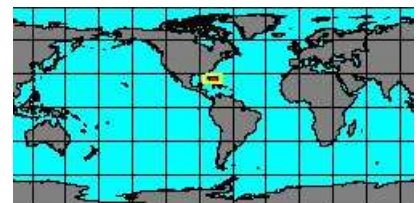
M.A. Klappenbach, 1970  
East America

No Georeferenced data available



5761300025  
**Pleuromeris**  
**tridentata**

(T. Say, 1826)  
Bahamas  
5 mm



**synonyms:**

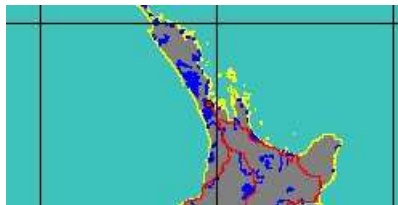
- *Pleuromeris decemcostata* T.A. Conrad, 1867



5761500389  
***Pleuromeris ultima***  
R.K. Dell, 1956  
New Zealand



5761150010  
***Pleuromeris zelandica***  
(G.P. Deshayes, 1854)  
New Zealand, Bay of Plenty  
7,2 mm



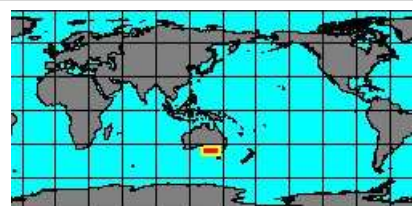
**synonyms:**

- *Venericardia bollonsi* H.H. Suter, 1907
- *Venericardia lutea* F.W. Hutton, 1880
- *Pleuromeris bollonsi* H.H. Suter, 1907
- *Pleuromeris lutea* F.W. Hutton, 1880

SubFamily: CARDITAMERINAE - **Genus: Vimentum** T. Iredale, 1925 (2 SP, 0 IMG)



5761500548  
***Vimentum dilectum***  
(E.A. Smith, 1885)  
South Australia

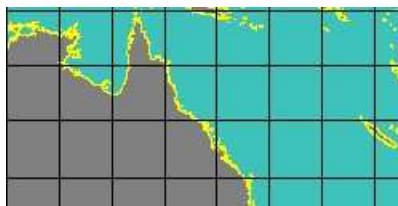


**synonyms:**

- *Venericardia dilecta excelsior* J.C. Verco, 1908
- *Venericardia excelsior leguleja* T. Iredale, 1925
- *Venericardia excelsior* J.C. Verco, 1908
- *Venericardia excelsior semota* T. Iredale, 1925



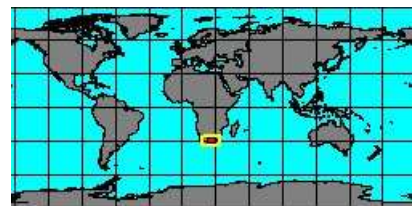
5761500551  
***Vimentum insignis***  
(E.A. Smith, 1885)  
Queensland



SubFamily: CARDITESINAE - **Genus: Cardites** J.H.F. Link, 1807 (syn: Actinobolus - 14 SP, 8 IMG)



5761300000  
***Cardites antiquata***  
C. Linnaeus, 1758  
Almeria, Spain  
29 mm

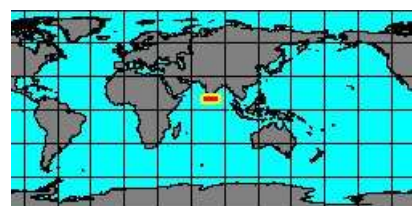


**synonyms:**

- *Venericardia antiquata* C. Linnaeus, 1758
- *Cardita antiquata arita* A. De Gregorio, 1885
- *Cardites antiquata elata* M.E.J. Bucquoy, P. Dautzenberg & G.F. Dollfus, 1892
- *Cardita antiquata ridula* A. De Gregorio, 1885
- *Venericardia antiquata trapezoidea* M.E.J. Bucquoy, P. Dautzenberg & G.F. Dollfus, 1892
- *Cardites intermedia* G.B. Brocchi, 1814
- *Cardita laxa* É.A.A. Locard, 1886
- *Cardites pectinata* G.B. Brocchi, 1814
- *Cardites rhomboidea* G.B. Brocchi, 1814
- *Chama rhomboidea* G.B. Brocchi, 1814
- *Cardita sukata* J.G. Bruguière, 1792
- *Chama antiquata* C. Linnaeus, 1758
- *Cardita antiquata elata* M.E.J. Bucquoy, P. Dautzenberg & G.F. Dollfus, 1892
- *Cardita antiquata pallidior* M.E.J. Bucquoy, P. Dautzenberg & G.F. Dollfus, 1892
- *Cardita antiquata trapezoidea* M.E.J. Bucquoy, P. Dautzenberg & G.F. Dollfus, 1892
- *Chama intermedia* G.B. Brocchi, 1814
- *Cardites laxa* É.A.A. Locard, 1886
- *Chama pectinata* G.B. Brocchi, 1814
- *Cardita rhomboidea* G.B. Brocchi, 1814
- *Cardites sukata* J.G. Bruguière, 1792

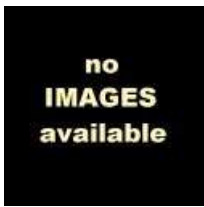


5760250005  
***Cardites bicolor***  
(J.B.P.A. Lamarck, 1819)  
India, Tuticorin  
43 mm

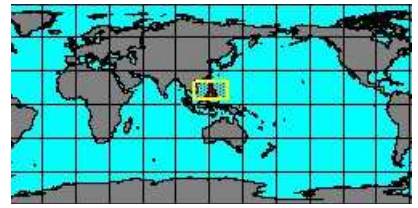


**synonyms:**

- *Cardita bicolor* J.B.P.A. Lamarck, 1819
- *Venericardia bicolor rostrata* E. Lamy, 1922



5761500538  
**Cardites**  
**canaliculata**  
 L.A. Reeve, 1843  
 Philippines



**synonyms:**

- Cardites cardioides L.A. Reeve, 1843
- Cardita cardioides L.A. Reeve, 1843



7126000023  
**Cardites**  
**cooperi**  
 (J.C. Melvill, 1909)

No Georeferenced data available



5761500165  
**Cardites**  
**crassicosatus**  
 (G.B. I Sowerby, 1825)  
 Gobernadora Island, Panama  
 50 mm



**synonyms:**

- Venericardia crassicosata G.B. I Sowerby, 1825
- Cardites cuvieri W.J. Broderip, 1832
- Cardita michelini A. Valenciennes, 1846
- Cardita sulcosa W.H. Dall, 1903
- Cardium lucinoides P.P. Carpenter, 1857
- Cardites michelini A. Valenciennes in A. Dupetit-Thouars, 1846
- Cardites sulcosa W.H. Dall, 1903



7126000041  
**Cardites**  
**cumingii**  
 (G.P. Deshayes, 1854)

No Georeferenced data available

**synonyms:**

- Cardita cumingii G.P. Deshayes, 1854



5760400010  
**Cardites**  
**floridanus**  
 (T.A. Conrad, 1838)  
 Florida  
 33,2 mm



**synonyms:**

- Carditamera conradi R.J. Shuttleworth, 1856
- Cardita floridanus T.A. Conrad, 1838
- Cardita gibbosa L.A. Reeve, 1843
- Cardita incrassata T.A. Conrad, 1832
- Carditamera nodulosa J.W. Mighels, 1844
- Cardita floridanus aba F.P. Jousseume in É. Lamy, 1922
- Carditamera gibbosa L.A. Reeve, 1843
- Trapezium nodulosa J.W. Mighels, 1844



5761500173  
**Cardites**  
**grayi**  
 (W.H. Dall, 1903)  
 Mexico  
 31 mm



**synonyms:**

- Cardites crassa G.B. Sowerby, 1839
- Cardita grayi W.H. Dall, 1903



5760250010  
**Cardites**  
**laticostatus**  
 (G.B. I Sowerby, 1833)  
 Panama West  
 31,4 mm



**synonyms:**

- *Cardites arcella* A. Valenciennes in A. Dupetit-Thouars, 1846
- *Cardita laticosta* D'Orbigny, 1845
- *Cardita reeveana* S. Clessin, 1888
- *Cardita tricolor* G.B. I Sowerby, 1833

- *Cardita laticostatus* G.B. I Sowerby, 1833
- *Cardites reeveana* S. Clessin, 1888
- *Cardites tricolor* G.B. I Sowerby, 1833



712800033  
**Cardites micellus**  
(Penna-Neme, 1971)

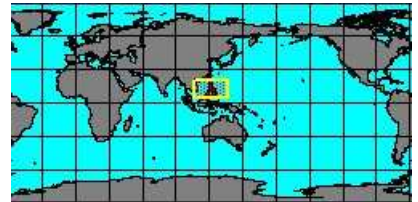
No Georeferenced data available



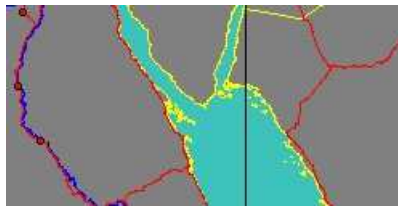
712600042  
**Cardites nitidus**  
(L.A. Reeve, 1843)  
Japan



5761500541  
**Cardites ovalis**  
(L.A. Reeve, 1843)  
Philippines



5761500181  
**Cardites rufa**  
E.S.J.L. de Laborde,  
& G.P. Deshayes, 1834  
Sinai, Egypt  
48 mm



**synonyms:**

- *Cardita angisucata* L.A. Reeve, 1843
- *Cardites castoruca* H. Adams & A. Adams, 1857
- *Cardites jukesii* G.P. Deshayes, 1854

- *Cardites angisucata* L.A. Reeve, 1843
- *Cardita jukesii* G.P. Deshayes, 1854
- *Cardita rufa* G.P. Deshayes in E.S.J.L. de Laborde & M. Linant, 1834



5761500109  
**Cardites umbonatus**  
(G.B. III Sowerby, 1904)  
Guinea  
14 mm



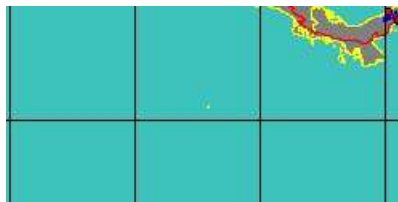
**synonyms:**

- *Cardita africanus* F.P. Marrat, 1878

SubFamily: CARDITESINAE - **Genus: Strophocardia** A.A. Olsson, 1961 (1 SP, 1 IMG)



5761500093  
**Strophocardia megastropa**  
(J.E. Gray, 1825)  
Cocos Island, Costa Rica  
32 mm



**synonyms:**

- *Venericardia flammea* J.L.H. Michelin, 1831
- *Cardita flammea* J.L.H. Michelin, 1831
- *Cardita tumida* W.J. Broderip, 1832
- *Strophocardia varia* W.J. Broderip, 1832

- *Venericardia megastropa* J.E. Gray, 1825
- *Cardita varia* W.J. Broderip, 1832

SubFamily: CARDITINAE - **Genus: Beguina** P.F. Röding, 1798 (syn: Azarella - 2 SP, 2 IMG)

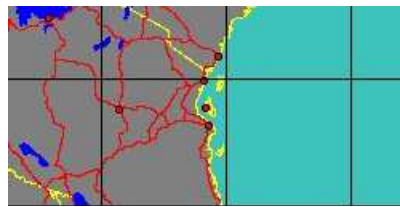




5761500125  
**Beguina gubernaculum**

(L.A. Reeve, 1843)

Tanzania  
58 mm



**synonyms:**

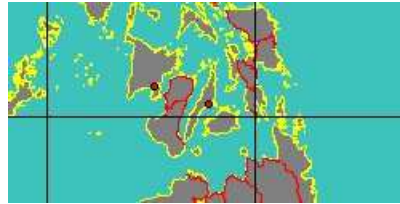
- *Beguina oblonga* S. Clessin, 1888
- *Cardita pallida* S. Clessin, 1888



5760150000  
**Beguina semiorbiculata**

(C. Linnaeus, 1758)

Philippines, Cebu  
65 mm



**synonyms:**

- *Cardita irregularis* S. Clessin, 1888
- *Beguina irregularis* S. Clessin, 1888
- *Chama phrenitica* I. von Born, 1778
- *Chama reniformis* J.F. Gmelin, 1791
- *Chama semiorbiculata* C. Linnaeus, 1758
- *Beguina nephritica* P.F. Röding, 1798
- *Beguina phrenitica* I. von Born, 1778
- *Beguina reniformis* J.F. Gmelin, 1791

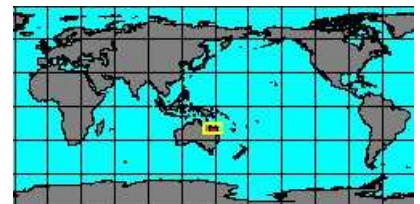
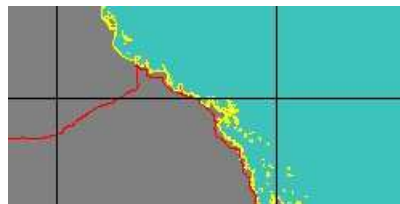
SubFamily: CARDITINAE - **Genus: Cardita** J.G. Bruguière, 1792 (syn: Herterocarda, Mytilcadia, Mytilcardita, Jesonia, Mytilcardia - 18 SP, 14 IMG)



5761500013  
**Cardita aviculina**

J.B.P.A. Lamarck, 1819

Australa, Dingo Beach  
22,2 mm



**synonyms:**

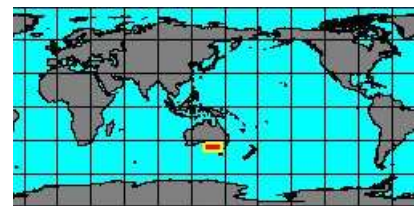
- *Cardita citrina* J.B.P.A. Lamarck, 1819
- *Mytilcardia tasmanica* J.E. Tenison-Woods, 1876
- *Cardita tasmanica* J.E. Tenison-Woods, 1876



5760004010  
**Cardita aviculina excavata**

G.P. Deshayes, 1854

South Australia  
13 mm



7126000005  
**Cardita caliculaeformis**

G.P. Deshayes in L. Mailard, 1863

Taiwan



**synonyms:**

- *Cardita caliculaeformis* E.C. Von Martens, 1880
- *Cardita variegata turgida* C.F.F. von Krauss, 1848
- *Cardita corbiculaeformis* G.W. Tryon, 1872



5760000015  
**Cardita calyculata**

(C. Linnaeus, 1758)

Croatia  
19 mm

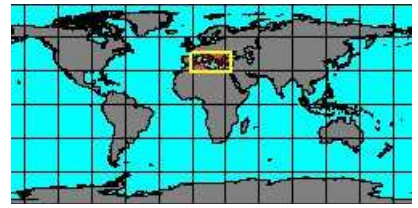
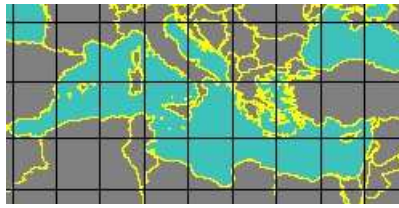


**synonyms:**

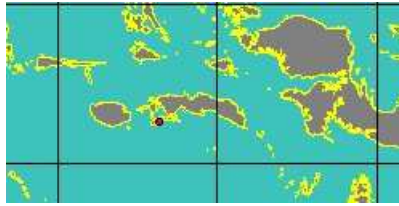
- *Chama calyculata* C. Linnaeus, 1758
- *Cardita calyculata imperans* A. De Gregorio, 1885
- *Cardita calyculata oblonga* M.E.J. Bucquoy, P. Dautzenberg & G.F. Dollfus, 1892
- *Cardita calyculata obsoleta* P. Dautzenberg, 1883
- *Cardita calyculata obtusata* M.E.J. Bucquoy, P. Dautzenberg & G.F. Dollfus, 1892
- *Cardita calyculata trisa* A. De Gregorio, 1885
- *Cardita elongata* C.F. Fontannes, 1882
- *Cardita formosula* É.A.A. Locard, 1892
- *Cardita calyculata oblonga* E. Réquien, 1848
- *Cardita calyculata obsoleta* P.M. Pallary, 1938
- *Cardita calyculata obtusata* E. Réquien, 1848
- *Cardita calyculata pita* A. De Gregorio, 1885
- *Cardita calyculata unicolor* M.E.J. Bucquoy, P. Dautzenberg & G.F. Dollfus, 1892
- *Cardita fabula* L.A. Reeve, 1843
- *Cardita sinuata* J.B.P.A. Lamarck, 1819



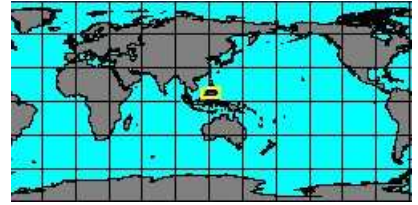
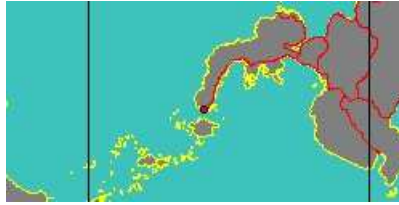
5761500021  
***Cardita calyculata decurtata***  
T.A. de M. Monterosato, 1884  
Mediterranean Sea



5761500539  
***Cardita castanea***  
G.P. Deshayes, 1854  
Moluccas



5760000025  
***Cardita crassicosta***  
J.B.P.A. Lamarck, 1819  
Philippines, Zamboanga  
46 mm

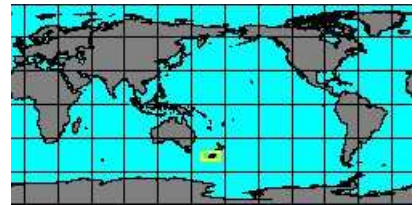


**synonyms:**

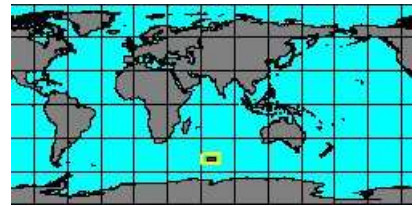
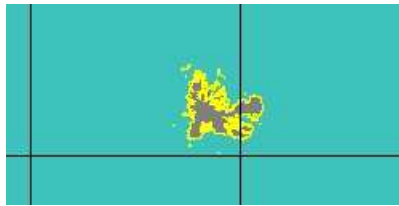
- Mytilicardia crassicosta J.B.P.A. Lamarck, 1819
- Cardita squamiferus G.B. I Sowerby, 1825
- Cardita crassicostata L.A. Reeve, 1843
- Cardita tridacnoides K.T. Menke, 1843



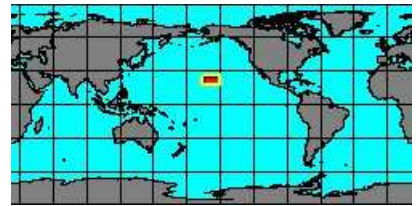
7126000006  
***Cardita distorta***  
L.A. Reeve, 1843  
New Zealand, Foveaux Strait  
25,5 mm



5760000005  
***Cardita distorta aoteana***  
H.J. Finlay, 1927  
Kerguelen Islands  
23,8 mm



5761500045  
***Cardita excisa***  
R.A. Philippi, 1847  
Hawaii



**synonyms:**

- Cardita thaanumi W.H. Dall, P. Bartsch & H.A. Rehder, 1938



5761500534  
***Cardita finchi***  
(J.C. Melville, 1898)  
Red Sea



**synonyms:**

- Cardita finchi J.C. Melville, 1898



5761500085  
***Cardita hawaiiensis***  
(W.H. Dall, P. Bartsch, & H.A. Rehder, 1938)  
Hawaii  
7 mm



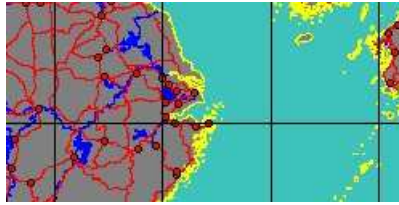
**synonyms:**

- *Arcinella cruda* W.H. Dall, P. Bartsch & H.A. Rehder, 1938
- *Arcinella laysana* W.H. Dall, P. Bartsch & H.A. Rehder, 1938

- *Arcinella hawaiiensis* W.H. Dall, P. Bartsch & H.A. Rehder, 1938
- *Cardita laysana* W.H. Dall, P. Bartsch & H.A. Rehder, 1938



5761500069  
**Cardita  
kyushuensis**  
(T.A. Okutani, 1963)  
East China Sea  
13 mm



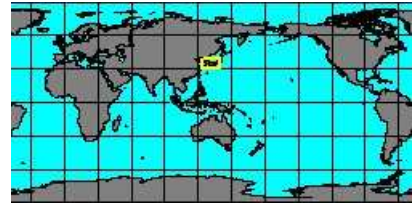
**synonyms:**

- *Glans kyushuensis* T.A. Okutani, 1963

- *Cardita uruma* I. Hayami & T. Kase, 1993



5760004000  
**Cardita  
leana**  
R.W. Dunker, 1860  
Japan, Kotoga beach  
21 mm

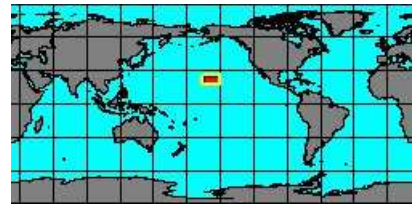
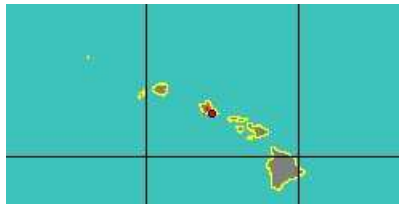


**synonyms:**

- *Cardita cumingiana* R.W. Dunker, 1860



5760004015  
**Cardita  
muricata**  
G.B. I Sowerby, 1833  
Hawaii  
20 mm



**synonyms:**

- *Cardita albida* S. Clessin, 1888



5761500101  
**Cardita  
pectunculus**  
(J.G. Bruguière, 1792)  
Indian Ocean

No Georeferenced data available



5760004020  
**Cardita  
pica**  
L.A. Reeve, 1843  
Philippines, Malapascua Island  
21,6 mm



**synonyms:**

- *Cardita essingtonensis* G.P. Deshayes, 1854
- *Cardita umblicata* G.P. Deshayes, 1854

- *Cardita muricata* K.L. Lamprell & T. Whitehead, 1992



7126000007  
**Cardita  
rufescens**  
J.B.P.A. Lamarck, 1819  
Senegal



**synonyms:**

- *Cardita rufescens* L.A. Reeve, 1843



5760000035  
**Cardita  
senegalensis**  
L.A. Reeve, 1843  
West Africa  
33,2 mm



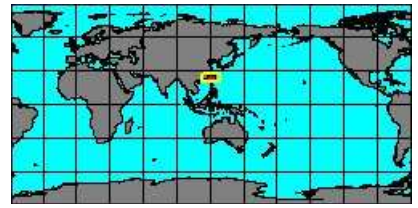
**synonyms:**

- *Cardita calyculata senegalensis* L.A. Reeve, 1843



576000040  
**Cardita  
variegata**  
J.G. Bruguière, 1792

Taiwan  
30 mm



**synonyms:**

- Cardita calyculata I. von Born, 1778
- Cardita inflata S. Clessin, 1888
- Mytilcardia variegata J.G. Bruguière, 1792

- Cardita radula L.A. Reeve, 1843



5761500554  
**Cardita  
vinsoni**  
J.M.R.M. Viader, 1951

Aruba  
4 mm



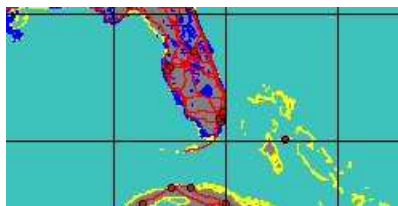
SubFamily: MIODOMERIDINAE - **Genus: Pteromeris** T.A. Conrad, 1862 (2 SP, 0 IMG)



5761500061  
**Pteromeris  
guanica**  
(A.A. Olsson, 1961)  
Bahamas



5761250010  
**Pteromeris  
perplana**  
(T.A. Conrad, 1841)  
Florida



**synonyms:**

- Astarte fiabella T.A. Conrad, 1846
- Pteromeris fiabella T.A. Conrad, 1846
- Venericardia perplana T.A. Conrad, 1841
- Cardita perplana T.A. Conrad, 1841

- Venericardia obliqua K.J. Bush, 1885
- Pleuomeris perplana T.A. Conrad, 1841
- Astarte radians T.A. Conrad, 1845

SubFamily: THECALIINAE - **Genus: Milneria** W.H. Dall, 1881 (syn: Ceropsis - 2 SP, 2 IMG)



5761500000  
**Milneria  
kelseyi**  
W.H. Dall, 1916  
California  
5 mm



5761500005  
**Milneria  
minima**  
(W.H. Dall, 1871)  
California  
7 mm



**synonyms:**

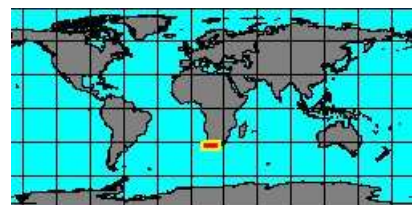
- Trapezium halotcola W.H. Dall, 1871

- Milneria halotcola W.H. Dall, 1871

SubFamily: THECALIINAE - **Genus: Thecalia** H. Adams & A. Adams, 1857 (1 SP, 1 IMG)



5760000020  
**Thecalia  
concaerata**  
(J.G. Bruguière, 1792)  
False Bay, South Africa  
15 mm



**synonyms:**

- Thecalia concamerata J.F. Gmelin, 1791
- Thecalia rietensis W.H. Turton, 1932

- Thecalia macrotheca A. Adams & G.F. Angas, 1864

SubFamily: VENERICARDIINAE - Genus: **Megacardita** F. Sacco, 1899 (10 SP, 8 IMG)

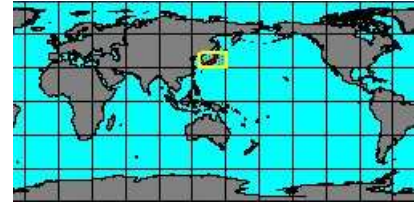
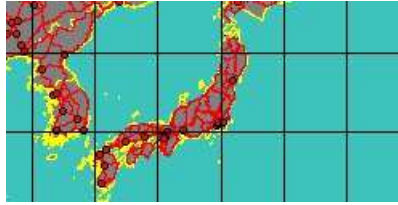


7128000031  
**Megacardita chinensis**  
 F.S. Xu, 2012

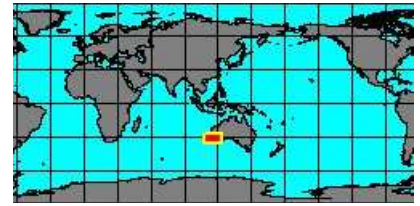
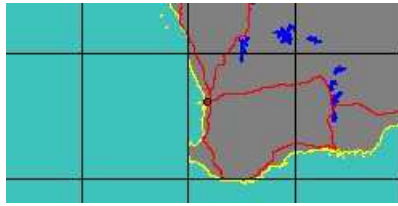
No Georeferenced data available



5761350000  
**Megacardita coreensis**  
 (G.P. Deshayes, 1854)  
 Japan  
 24,2 mm



7126000035  
**Megacardita depressa**  
 (J.B.P.A. Lamarck, 1819)  
 Western Australia, Perth  
 38,1 mm

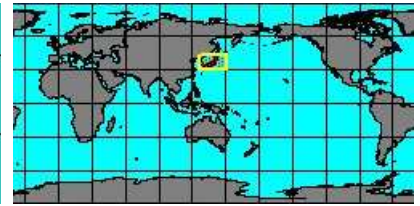
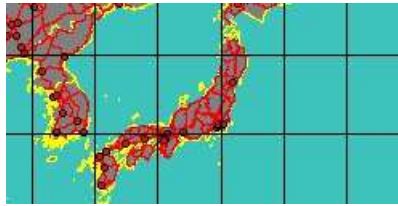


**synonyms:**

- Cardita rubicunda K.T. Menke, 1843



5761350005  
**Megacardita ferruginosa**  
 (A. Adams & L.A. Reeve, 1850)  
 Japan  
 27,3 mm



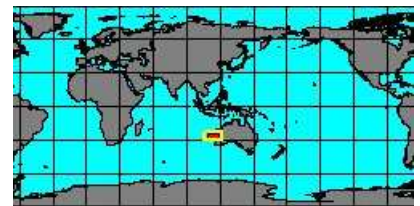
**synonyms:**

- Venericardia cipangoana M. Yokoyama, 1920
- Venericardia kiensis G.B. III Sowerby, 1913
- Megacardita kiensis G.B. III Sowerby, 1913

- Megacardita cipangoana M. Yokoyama, 1920
- Cardita kiensis G.B. III Sowerby, 1913



5761350010  
**Megacardita incrassata**  
 G.B. I Sowerby, 1825  
 Australia, Shark Bay  
 43 mm



5761500477  
**Megacardita koreana**  
 T. Habe & K. Itô, 1965  
 Indo-Pacific

No Georeferenced data available

**synonyms:**

- Megacardita ferruginosa koreana T. Habe & K. Itô, 1965



5760004005  
**Megacardita monodi**  
 (M. Nicklés, 1953)  
 West Sahara  
 16 mm



**synonyms:**

- Cyclocardia monodi M. Nicklés, 1953



576000030  
**Megacardita  
nodulosa**  
(J.B.P.A. Lamarck, 1819)  
Broome, Australia  
47 mm

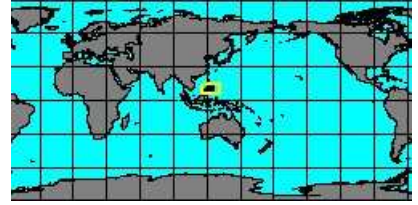


**synonyms:**

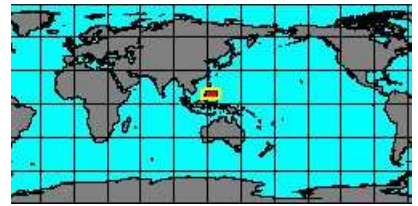
- Cardita mamorea L.A. Reeve, 1843
- Cardita nodulosa J.B.P.A. Lamarck, 1819



5760250015  
**Megacardita  
preissii**  
(K.T. Menke, 1843)  
Philippines, Mactan Island  
22,7 mm



5761500461  
**Megacardita  
turgida**  
(J.B.P.A. Lamarck, 1819)  
Philippines, Aliguay Island  
21 mm



**synonyms:**

- Cardita sowerbyi G.P. Deshayes, 1854
- Megacardita sowerbyi G.P. Deshayes, 1854

SubFamily: VENERICARDIINAE - **Genus: Venericardia** J.B.P.A. Lamarck, 1801 (syn: Venericardium - 1 SP, 0 IMG)



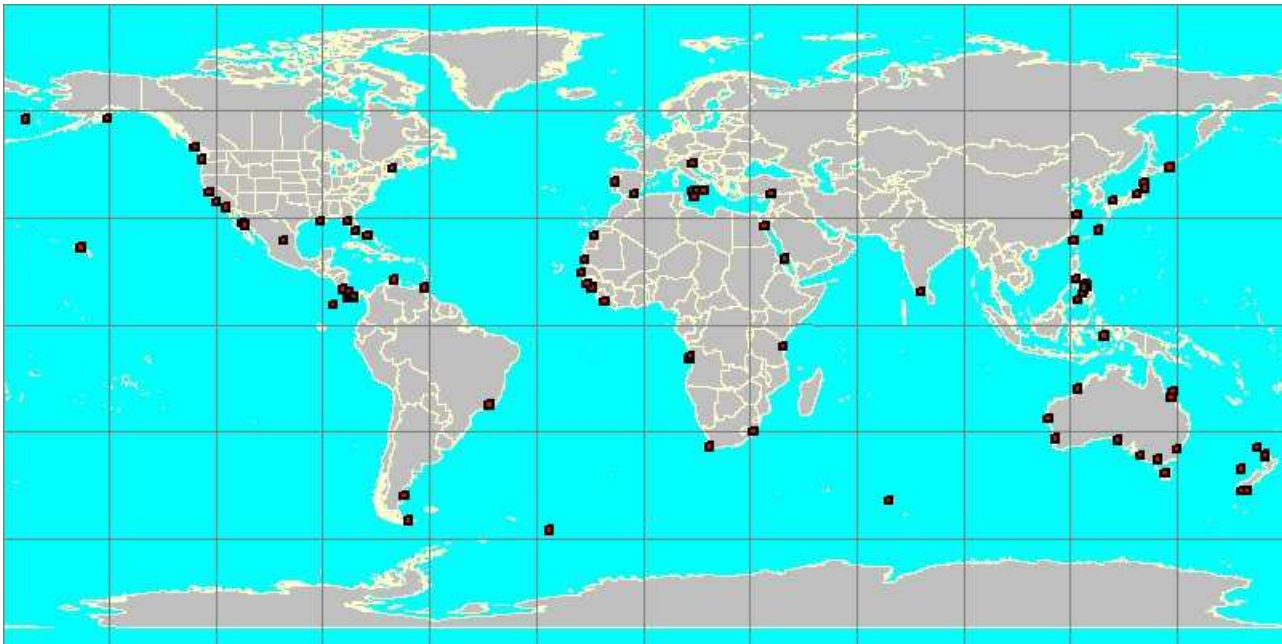
5761500405  
**Venericardia  
columnaria**  
C. Hedley & W.L. May, 1908  
Tasmania



---

## Family: CARDITIDAE

---



red squares show where each species has been georeferenced

each square has a size of 2 degrees

an interactive version of this image can be accessed at

<http://www.bagniliggia.it/WMSD/FamilyMap/CARDITIDAEmap.htm>

please note that this is not the complete coverage of this family  
the Data Base is not exhaustive and only one specimen per species has been georeferenced

this map is only the graphic summary of the WMSDB Data Base up to now

the total number of georeferenced species in this map is: 124 from a total of 152