



Family: TURBINELLIDAE

Class: GASTROPODA**--- Clade: CAENOASTROPODA-HYPSOGASTROPODA-NEOGASTROPODA-MURICOIDEA****----- Family: TURBINELLIDAE** Swainson, 1835 (Sea)

- Alphabetic order - when **first name** is in bold the species has images
Taxa=276, Genus=12, Subgenus=4, Species=91, Subspecies=13, Synonyms=155, Images=87

- **aapta**, [Coluzea aapta](#) M.G. Harasewych, 1986
- acuminata, Turbinella acuminata L.C. Kiener, 1840 - syn of: [Latirus acuminatus](#) (L.C. Kiener, 1840)
- aequilonius, [Fulgurofusus aequilonius](#) A.V. Sysoev, 2000
- agrestis, Turbinella agrestis H.E. Anton, 1838 - syn of: [Nicema subrostrata](#) (J.E. Gray, 1839)
- **aldridgei**, Vasum aldridgei G.W. Nowell-Usticke, 1969 - syn of: [Attiliosa aldridgei](#) (G.W. Nowell-Usticke, 1969)
- **altocanalialis**, [Coluzea altocanalialis](#) R.K. Dell, 1956
- **amaliae**, Turbinella amaliae H.C. Küster & W. Kobelt, 1874 - syn of: [Hemipolygona amaliae](#) (H.C. Küster & W. Kobelt, 1874)
- **angularis**, [Coluzea angularis](#) (K.H. Barnard, 1959)
- **angularis**, Turbinella angularis L.A. Reeve, 1847 - syn of: [Leucozonia nassa](#) (J.F. Gmelin, 1791)
- **angularis riiseana**, Turbinella angularis riiseana H.C. Küster & W. Kobelt, 1874 - syn of: [Leucozonia nassa](#) (J.F. Gmelin, 1791)
- **angulata**, [Turbinella angulata](#) (J. Lightfoot, 1786)
- annulata, Syrinx annulata P.F. Röding, 1798 - syn of: [Pustulaturus annulatus](#) (P.F. Röding, 1798)
- **aptos**, Columbarium aptos M.G. Harasewych, 1986 - syn of: [Coluzea aapta](#) M.G. Harasewych, 1986
- **ardeola**, Vasum ardeola A. Valenciennes, 1832 - syn of: [Vasum caestus](#) (W.J. Broderip, 1833)
- **armatum**, [Vasum armatum](#) (W.J. Broderip, 1833)
- **armigera**, Tudivasum armigera A. Adams, 1855 - syn of: [Tudivasum armigerum](#) (A. Adams, 1856)
- **armigera**, Turbinella armigera J.B.P.A. Lamarck, 1822 - syn of: [Mancinella armigera](#) J.H.F. Link, 1807
- **armigerum**, [Tudivasum armigerum](#) (A. Adams, 1856)
- **aruanus**, [Syrinx aruanus](#) (C. Linnaeus, 1758)
- atlantis, [Fulgurofusus atlantis](#) (W.J. Clench & C.G. Aguayo, 1938)
- attenuata, Turbinella attenuata L.A. Reeve, 1847 - syn of: [Pustulaturus attenuatus](#) (L.A. Reeve, 1847)
- **auranticus**, Vasum auranticus J.C. Verco, 1895 - syn of: [Altivasum flindersi](#) (J.C. Verco, 1914)
- **aurora**, [Peristarium aurora](#) (F.M. Bayer, 1971)
- **australiensis**, Turbinella australiensis L.A. Reeve, 1847 - syn of: [Peristernia australiensis](#) (L.A. Reeve, 1847)
- **barclayi**, Turbinella barclayi L.A. Reeve, 1847 - syn of: [Latirus barclayi](#) (L.A. Reeve, 1847)
- **bartletti**, [Fulgurofusus bartletti](#) (W.J. Clench & C.G. Aguayo, 1940)
- **bartletti**, Histricosceptrum bartletti (W.J. Clench & C.G. Aguayo, 1940) - syn of: [Fulgurofusus bartletti](#) (W.J. Clench & C.G. Aguayo, 1940)
- **benthocallis**, [Fulgurofusus benthocallis](#) (J.C. Melville & R. Standen, 1907)
- bermudezi, [Fulgurofusus bermudezi](#) (W.J. Clench & C.G. Aguayo, 1938)
- **berthae**, [Coluzea berthae](#) (D. Monsecour & K. Kreipl, 2003)
- bicolor, Turbinella bicolor H.C. Küster & W. Kobelt, 1874 - syn of: [Peristernia bicolor](#) (H.C. Küster & W. Kobelt, 1874)
- **bimurata**, [Coluzea bimurata](#) T.A. Darragh, 1987
- **blosvillei**, Tudicla blosvillei G.P. Deshayes, 1832 - syn of: [Lataxiena blosvillei](#) (G.P. Deshayes, 1832)
- **brasiliana**, Turbinella brasiliana D'Orbigny, 1841 - syn of: [Leucozonia nassa](#) (J.F. Gmelin, 1791)
- **brayi**, [Fulgurofusus brayi](#) (W.J. Clench, 1959)
- bullatum, [Columbarium bullatum](#) (W.H. Dall, 1927)
- **caerulea**, Turbinella caerulea G. Perry, 1811 - syn of: [Turbinella pyrum](#) (C. Linnaeus, 1767)
- **caestus**, [Vasum caestus](#) (W.J. Broderip, 1833)
- **caledonica**, Turbinella caledonica S.A.A. Petit De La Saussaye, 1851 - syn of: [Peristernia ustulata](#) (L.A. Reeve, 1847)
- canaliculatum, [Coluzea canaliculatum](#) (E.C. Von Martens, 1901)
- **candelabrum**, Turbinella candelabrum L.A. Reeve, 1847 - syn of: [Latirus candelabrum](#) (L.A. Reeve, 1847)
- **capitatus**, Tudicla capitatus G. Perry, 1811 - syn of: [Tudicla spirillus](#) (C. Linnaeus, 1767)
- **capitellum**, [Vasum capitellum](#) (C. Linnaeus, 1758)
- **caragarang**, Columbarium caragarang T.A. Garrard, 1966 - syn of: [Columbarium spinicinctum](#) (E.C. Von Martens, 1881)
- **caragarang**, Columbarium caragarang T.A. Garrard, 1966 - syn of: [Columbarium spinicinctum](#) (E.C. Von Martens, 1881)
- **cardoscyllum**, Turbinella cardoscyllum G. Fischer von Waldheim, 1807 - syn of: [Turbinella angulata](#) (J. Lightfoot, 1786)
- **carinata**, Tudicla carinata P.F. Röding, 1798 - syn of: [Tudicla spirillus](#) (C. Linnaeus, 1767)
- **cassiforme**, [Vasum cassiforme](#) (L.C. Kiener, 1840)
- **castaneum**, Vasum castaneum P.F. Röding, 1798 - syn of: [Menathais tuberosa](#) (P.F. Röding, 1798)
- **ceramicum**, [Vasum ceramicum](#) (C. Linnaeus, 1758)
- **ceramicus**, Vasum ceramicus C. Linnaeus, 1758 - syn of: [Vasum ceramicum](#) (C. Linnaeus, 1758)
- **chlorostoma**, Turbinella chlorostoma G.B. I Sowerby, 1825 - syn of: [Peristernia chlorostoma](#) (G.B. I Sowerby, 1825)
- **cinerea**, Turbinella cinerea L.A. Reeve, 1847 - syn of: [Fusinus cinereus](#) (L.A. Reeve, 1847)
- cingulata, [Coluzea cingulata](#) (E.C. Von Martens, 1901)
- cingulatum, Columbarium cingulatum E.C. Von Martens, 1901 - syn of: [Coluzea cingulata](#) (E.C. Von Martens, 1901)
- **cingulifera**, Turbinella cingulifera J.B.P.A. Lamarck, 1816 - syn of: [Leucozonia nassa](#) (J.F. Gmelin, 1791)
- **clathrata**, Turbinella clathrata A. Valenciennes, 1841 - syn of: [Peristernia clathrata](#) (A. Valenciennes, 1840)

- **coerulea**, *Turbinella coerulea* G. Perry, 1811 – syn of: **[Turbinella pyrum](#)** (C. Linnaeus, 1767)
- **comorinensis**, **[Turbinella pyrum comorinensis](#)** (J. Hornell, 1916)
- **concentrica**, *Turbinella concentrica* L.A. Reeve, 1847 – syn of: **[Polygona concentrica](#)** (L.A. Reeve, 1847)
- **cornigera**, *Turbinella cornigera* J.B.P.A. Lamarck, 1822 – syn of: **[Vasum turbinellus](#)** (C. Linnaeus, 1758)
- **cornigerus**, **[Vasum turbinellus cornigerus](#)** (J.B.P.A. Lamarck, 1822)
- **corollaceum**, **[Columbarium corollaceum](#)** S. Zhang, 2003
- **coronatum**, *Columbarium coronatum* L. Penna-Neme & J.L.M. Leme, 1978 – syn of: **[Coronium coronatum](#)** (L. Penna-Neme & J.L.M. Leme, 1978)
- **costatum**, **[Columbarium pagoda costatum](#)** T. Shikama, 1963
- **craticulata**, *Turbinella craticulata* A. da Costa, 1829 – syn of: **[Pollia dorbignyi](#)** (B.C.M. Payraudeau, 1826)
- **craticulata**, *Turbinella craticulata* J.B.P.A. Lamarck, 1829 – syn of: **[Pollia wagneri](#)** (H.E. Anton, 1838)
- **crenulata**, *Turbinella crenulata* J.B.P.A. Lamarck, 1829 – syn of: **[Pollia wagneri](#)** (H.E. Anton, 1838)
- **crocea**, *Turbinella crocea* J.E. Gray, 1839 – syn of: **[Peristernia crocea](#)** (J.E. Gray, 1839)
- **crosseanum**, **[Vasum crosseanum](#)** (S.M. Souverbie, 1876)
- **cryptocarinatus**, **[Cryptofusus cryptocarinatus](#)** (R.K. Dell, 1956)
- **cynara**, *Turbinella cynara* P.F. Röding, 1798 – syn of: **[Turbinella angulata](#)** (J. Lightfoot, 1786)
- **dentata**, **[Turbinella pyrum dentata](#)** Unknown
- **diadema**, *Columbarium diadema* G.B. II Sowerby, 1880 – syn of: **[Columbarium pagoda](#)** (R.P. Lesson, 1831)
- **distephanotis**, **[Coluzea distephanotis](#)** (J.C. Melvil, 1891)
- **divergens**, *Vasum divergens* G. Perry, 1810 – syn of: **[Vasum muricatum](#)** (I. von Born, 1778)
- **dubia**, *Turbinella dubia* S.A.A. Petit De La Saussaye, 1853 – syn of: **[Leucozonia nassa](#)** (J.F. Gmelin, 1791)
- **eastwoodae**, **[Coluzea eastwoodae](#)** R.N. Kilburn, 1971
- **eburnea**, *Turbinella eburnea* A. da Costa, 1830 – syn of: **[Pollia dorbignyi](#)** (B.C.M. Payraudeau, 1826)
- **ecphoroides**, **[Fulgurofusus ecphoroides](#)** M.G. Harasewych, 1983
- **electra**, **[Fulgurofusus electra](#)** (F.M. Bayer, 1971)
- **electra**, *Peristarium electra* F.M. Bayer, 1971 – syn of: **[Fulgurofusus electra](#)** (F.M. Bayer, 1971)
- **enigmaticum**, **[Enigmavasum enigmaticum](#)** G.T. Poppe & S.P. Tagaro, 2005
- **espinosa**, *Coluzea espinosa* H.J. Finlay, 1930 – syn of: **[Coluzea spiralis](#)** (A. Adams, 1856)
- **faceta**, **[Coluzea faceta](#)** M.G. Harasewych, 1991
- **fallax**, *Turbinella fallax* H.C. Küster & W. Kobelt, 1874 – syn of: **[Latirus fallax](#)** (H.C. Küster & W. Kobelt, 1874)
- **fasciata**, *Turbinella fasciata* G.B. I Sowerby, 1825 – syn of: **[Peristernia columbarium](#)** (J.F. Gmelin, 1791)
- **fastigium**, *Turbinella fastigium* L.A. Reeve, 1847 – syn of: **[Benimakia fastigium](#)** (L.A. Reeve, 1847)
- **filamentosa**, *Turbinella filamentosa* H.C. Küster & W. Kobelt, 1874 – syn of: **[Latirus filamentosus](#)** (H.C. Küster & W. Kobelt, 1874)
- **filosa**, *Turbinella filosa* G.H. Schubert & J.A. Wagner, 1829 – syn of: **[Fusinus filosus](#)** (G.H. Schubert & J.A. Wagner, 1829)
- **flindersi**, **[Altivasum flindersi](#)** (J.C. Verco, 1914)
- **flindersi**, *Vasum flindersi* J.C. Verco, 1914 – syn of: **[Altivasum flindersi](#)** (J.C. Verco, 1914)
- **formosissimum**, **[Columbarium formosissimum](#)** J.R. le B. Tomlin, 1928
- **fuscus**, **[Turbinella fuscus](#)** G.B. I Sowerby, 1825
- **gemmata**, *Turbinella gemmata* L.A. Reeve, 1847 – syn of: **[Peristernia gemmata](#)** (L.A. Reeve, 1847)
- **globulus**, **[Vasum globulus](#)** (J.B.P.A. Lamarck, 1816)
- **globulus**, *Turbinella globulus* J.B.P.A. Lamarck, 1816 – syn of: **[Vasum globulus](#)** (J.B.P.A. Lamarck, 1816)
- **globulus antiguensis**, *Vasum globulus antiguensis* G.W. Nowell-Usticke, 1969 – syn of: **[Vasum globulus](#)** (J.B.P.A. Lamarck, 1816)
- **globulus nuttingi**, **[Vasum globulus nuttingi](#)** (J. Henderson, 1919)
- **globulus whincheri**, **[Vasum globulus whincheri](#)** E.J. Petuch, 2013
- **gomphos**, **[Coluzea gomphos](#)** M.G. Harasewych, 1986
- **groschi**, **[Coluzea groschi](#)** M.G. Harasewych & K. Fraussen, 2001
- **gutturaria**, *Tudicla gutturaria* P.F. Röding, 1798 – syn of: **[Ranularia gutturaria](#)** (P.F. Röding, 1798)
- **harrisae**, **[Columbarium harrisae](#)** M.G. Harasewych, 1983
- **hebridarum**, *Columbarium hebridarum* R.P.J. Hervier, 1899 – syn of: **[Euplica scripta](#)** (J.B.P.A. Lamarck, 1822)
- **hedleyi**, **[Columbarium hedleyi](#)** T. Iredale, 1936
- **hidalgoi**, *Turbinella hidalgoi* J.C.H. Crosse, 1865 – syn of: **[Leucozonia triserialis hidalgoi](#)** J.C.H. Crosse, 1865
- **hystriculum**, **[Columbarium hystriculum](#)** T.A. Darragh, 1987
- **icarus**, **[Coluzea icarus](#)** M.G. Harasewych, 1986
- **ignifer**, *Streptosiphon ignifer* K. Fraussen & A. Trencart, 2008 – syn of: **[Afer ignifer](#)** K. Fraussen & A. Trencart, 2008
- **imperialis**, *Turbinella imperialis* L.A. Reeve, 1843 – syn of: **[Vasum tubiferum](#)** (H.E. Anton, 1838)
- **impressa**, *Turbinella impressa* H.E. Anton, 1838 – syn of: **[Latirus impressus](#)** (H.E. Anton, 1838)
- **incarnata**, *Turbinella incarnata* G.P. Deshayes, 1830 – syn of: **[Pollia incarnata](#)**
- **incisus**, *Syrinx incisus* O.A.L. Mörch, 1852 – syn of: **[Syrinx aruanus](#)** (C. Linnaeus, 1758)
- **inermis**, **[Tudivasum inermis](#)** (G.F. Angas, 1878)
- **infundibulum**, *Turbinella infundibulum* J.F. Gmelin, 1791 – syn of: **[Polygona infundibulum](#)** (J.F. Gmelin, 1791)
- **iostoma**, *Turbinella iostoma* H.C. Küster & W. Kobelt, 1874 – syn of: **[Peristernia columbarium](#)** (J.F. Gmelin, 1791)
- **iricolor**, *Turbinella iricolor* J.B. Hombron & C.H. Jacquinot, 1848 – syn of: **[Peristernia iricolor](#)** J.B. Hombron & C.H. Jacquinot, 1848
- **juliae**, **[Coluzea juliae](#)** M.G. Harasewych, 1989
- **kallistropa**, **[Coluzea kallistropa](#)** M.G. Harasewych, 2004
- **knorrii**, *Turbinella knorrii* G.P. Deshayes, 1843 – syn of: **[Leucozonia nassa](#)** (J.F. Gmelin, 1791)
- **kurtzi**, **[Tudivasum kurtzi](#)** (J.H. Macpherson, 1964)

- **lactisfloris**, [Vasum lactisfloris](#) M. Ferrario, 1983
- **laevigata**, [Turbinella laevigata](#) H.E. Anton, 1838
- **laevigata ovoidea**, [Turbinella laevigata ovoidea](#) L.C. Kiener, 1840
- **laevigata rianae**, [Turbinella laevigata rianae](#) A. Debaerd, 1986
- **laffertyi**, [Turbinella laffertyi](#) R.N. Kilburn, 1975
- **lanceolata**, [Turbinella lanceolata](#) L.A. Reeve, 1847 - syn of: [Benimakia lanceolata](#) (L.A. Reeve, 1847)
- **latiriforme**, [Vasum latiriforme](#) H.A. Rehder & R.T. Abbott, 1951
- **lauta**, [Turbinella lauta](#) L.A. Reeve, 1847 - syn of: [Turrilatirus lautus](#) (L.A. Reeve, 1847)
- **leucozonalis**, [Turbinella leucozonalis](#) J.B.P.A. Lamarck, 1822 - syn of: [Leucozonia leucozonalis](#) (J.B.P.A. Lamarck, 1822)
- **lignarius**, [Turbinellus lignarius](#) G. Perry, 1811 - syn of: [Latirus polygonus](#) (J.F. Gmelin, 1791)
- **lineata**, [Turbinella lineata](#) J.B.P.A. Lamarck, 1816 - syn of: [Turrilatirus turritus](#) (J.F. Gmelin, 1791)
- **liriopae**, [Coluzea liriopae](#) M.G. Harasewych, 1986
- **loebbeckeii**, [Turbinella loebbeckeii](#) H.C. Küster & W. Kobelt, 1876 - syn of: [Peristernia loebbeckeii](#) (H.C. Küster & W. Kobelt, 1876)
- **maculata**, [Turbinella maculata](#) J.B. Hombron & C.H. Jacquinot, 1848 - syn of: [Latirus maculatus](#) (L.A. Reeve, 1847)
- **maculata**, [Turbinella maculata](#) L.A. Reeve, 1847 - syn of: [Latirus maculatus](#) (L.A. Reeve, 1847)
- **maculata**, [Syrinx maculata](#) P.F. Röding, 1798 - syn of: [Fusinus ansatus](#) (J.F. Gmelin, 1791)
- **madagascarensis**, [Coluzea madagascarensis](#) M.G. Harasewych, 2004
- **magna**, [Turbinella magna](#) H.E. Anton, 1838 - syn of: [Fasciolaria magna](#) (H.E. Anton, 1838)
- **mariae**, [Coluzea mariae](#) A.W.B. Powell, 1952
- **mariei**, [Turbinella mariei](#) J.C.H. Crosse, 1869 - syn of: [Benimakia mariei](#) J.C.H. Crosse, 1869
- **marmorata**, [Syrinx marmorata](#) P.F. Röding, 1798 - syn of: [Marmarofusus nicobaricus](#) (P.F. Röding, 1798)
- **marshalli**, [Fulgurofusus marshalli](#) M.G. Harasewych, 2011
- **maxwelli**, [Fulgurofusus maxwelli](#) M.G. Harasewych, 2011
- **merope**, [Fulgurofusus merope](#) (F.M. Bayer, 1971)
- **merope**, [Peristarium merope](#) F.M. Bayer, 1971 - syn of: [Fulgurofusus merope](#) (F.M. Bayer, 1971)
- **mitis**, [Turbinella mitis](#) J.B.P.A. Lamarck, 1822 - syn of: [Vasum capitellum](#) (C. Linnaeus, 1758)
- **mitis**, [Vasum mitis](#) J.B.P.A. Lamarck, 1822 - syn of: [Vasum capitellum](#) (C. Linnaeus, 1758)
- **muricatum**, [Vasum muricatum](#) (I. von Born, 1778)
- **nakayasui**, [Columbarium pagoda nakayasui](#) T. Habe, 1979
- **nana**, [Turbinella nana](#) L.A. Reeve, 1847 - syn of: [Fusolatirus nana](#) (L.A. Reeve, 1847)
- **nanshaensis**, [Fulgurofusus nanshaensis](#) S. Zhang, 2003
- **napus**, [Turbinella pyrum napus](#) J.B.P.A. Lamarck, 1822
- **nassa**, [Turbinella nassa](#) J.F. Gmelin, 1791 - syn of: [Leucozonia nassa](#) (J.F. Gmelin, 1791)
- **nassatula**, [Turbinella nassatula](#) J.B.P.A. Lamarck, 1822 - syn of: [Peristernia nassatula](#) (J.B.P.A. Lamarck, 1822)
- **nassoides**, [Turbinella nassoides](#) L.A. Reeve, 1847 - syn of: [Latirus nassoides](#) (L.A. Reeve, 1847)
- **natalense**, [Columbarium natalense](#) J.R. le B. Tomlin, 1928
- **naxa**, [Coluzea naxa](#) M.G. Harasewych, 2004
- **nicobaricus**, [Syrinx nicobaricus](#) P.F. Röding, 1798 - syn of: [Marmarofusus nicobaricus](#) (P.F. Röding, 1798)
- **nigra**, [Vasum nigra](#) G. Perry, 1811 - syn of: [Vasum turbinellus](#) (C. Linnaeus, 1758)
- **nigricans**, [Vasum nigricans](#) G. Perry, 1811 - syn of: [Vasum turbinellus](#) (C. Linnaeus, 1758)
- **noumeensis**, [Turbinella noumeensis](#) J.C.H. Crosse, 1870 - syn of: [Crassicantharus noumeensis](#) (J.C.H. Crosse, 1870)
- **nuttingi**, [Vasum globulus nuttingi](#) (J. Henderson, 1919)
- **nuttingi**, [Turbinella nuttingi](#) J. Henderson, 1919 - syn of: [Vasum globulus nuttingi](#) (J. Henderson, 1919)
- **obtusa**, [Turbinella pyrum obtusa](#) Unknown Author
- **ovoidea**, [Turbinella laevigata ovoidea](#) L.C. Kiener, 1840
- **paeteliana**, [Turbinella paeteliana](#) H.C. Küster & W. Kobelt, 1874 - syn of: [Fusolatirus paetelianus](#) (H.C. Küster & W. Kobelt, 1874)
- **pagoda**, [Columbarium pagoda](#) (R.P. Lesson, 1831)
- **pagoda costatum**, [Columbarium pagoda costatum](#) T. Shikama, 1963
- **pagoda nakayasui**, [Columbarium pagoda nakayasui](#) T. Habe, 1979
- **pagoda stellatum**, [Columbarium pagoda stellatum](#) T. Habe, 1953
- **pagodoides**, [Columbarium pagodoides](#) (R.B. Watson, 1882)
- **pensum**, [Coluzea pensum](#) F.W. Hutton, 1873 - syn of: [Coluzea spiralis](#) (A. Adams, 1856)
- **pinicola**, [Fustifusus pinicola](#) (T.A. Darragh, 1987)
- **plicatula**, [Turbinella plicatula](#) H.E. Anton, 1838 - syn of: [Latirus plicatulus](#) (H.E. Anton, 1838)
- **polygonus**, [Turbinellus polygonus](#) J.F. Gmelin, 1791 - syn of: [Latirus polygonus](#) (J.F. Gmelin, 1791)
- **ponderosa**, [Turbinella ponderosa](#) (J. Lightfoot, 1786)
- **porphyrostoma**, [Tudicula porphyrostoma](#) A. Adams & L.A. Reeve, 1847 - syn of: [Afer porphyrostoma](#) (L.A. Reeve, 1847)
- **probosciferus**, [Syrinx probosciferus](#) J.B.P.A. Lamarck, 1822 - syn of: [Syrinx aruanus](#) (C. Linnaeus, 1758)
- **producta**, [Syrinx producta](#) P.F. Röding, 1798 - syn of: [Fusinus longissimus](#) (J.F. Gmelin, 1791)
- **pulchella**, [Turbinella pulchella](#) L.A. Reeve, 1847 - syn of: [Peristernia pulchella](#) (L.A. Reeve, 1847)
- **purpuroides**, [Turbinella purpuroides](#) R.P. Lesson, 1842 - syn of: [Latirus purpuroides](#) (R.P. Lesson, 1842)
- **pyriformis**, [Turbinella pyriformis](#) G. Perry, 1811 - syn of: [Turbinella pyrum](#) (C. Linnaeus, 1767)
- **pyrum**, [Turbinella pyrum](#) (C. Linnaeus, 1767)
- **pyrum comorinensis**, [Turbinella pyrum comorinensis](#) (J. Hornell, 1916)
- **pyrum dentata**, [Turbinella pyrum dentata](#) Unknown

- **pyrum fusus**, *Turbinella pyrum fusus* G.B. I Sowerby, 1825 - syn of: [Turbinella fusus](#) G.B. I Sowerby, 1825
- **pyrum napus**, [Turbinella pyrum napus](#) J.B.P.A. Lamarck, 1822
- **pyrum obtusa**, [Turbinella pyrum obtusa](#) Unknown Author
- **quadratarivricosum**, [Columbarium quadratarivricosum](#) M.G. Harasewych, 2004
- **radialis**, [Coluzea radialis](#) (R.B. Watson, 1882)
- **rapa**, *Turbinella rapa* J.B.P.A. Lamarck, 1843 - syn of: [Turbinella pyrum](#) (C. Linnaeus, 1767)
- **rasilistoma**, [Tudivasum rasilistoma](#) (R.T. Abbott, 1959)
- **recurva**, *Tudicla recurva* A. Adams, 1854 - syn of: [Afer porphyrostoma](#) (L.A. Reeve, 1847)
- **recurvirostra**, *Turbinella recurvirostra* G.H. Schubert & J.A. Wagner, 1829 - syn of: [Nodoliturus recurvirostra](#) (G.H. Schubert & J.A. Wagner, 1829)
- **rhinoceros**, [Vasum rhinoceros](#) (J.F. Gmelin, 1791)
- **rhinocerus**, *Vasum rhinocerus* J.F. Gmelin, 1791 - syn of: [Vasum rhinoceros](#) (J.F. Gmelin, 1791)
- **rianae**, [Turbinella laevigata rianae](#) A. DeSaerdt, 1986
- **rollandi**, *Turbinella rollandi* A.C. Bernardi & J.C.H. Crosse, 1861 - syn of: [Peristernia rollandi](#) (A.C. Bernardi & J.C.H. Crosse, 1861)
- **rosadoi**, [Coluzea rosadoi](#) L. Bozzetti, 2006
- **rotunda**, [Coluzea rotunda](#) (K.H. Barnard, 1959)
- **rubescens**, *Vasum rubescens* G. Perry, 1811 - syn of: [Vasum capitellum](#) (C. Linnaeus, 1758)
- **rudis**, *Turbinella rudis* L.A. Reeve, 1847 - syn of: [Leucozonia rudis](#) (L.A. Reeve, 1847)
- **sanguiflua**, *Turbinella sanguiflua* L.A. Reeve, 1847 - syn of: [Turrilatirus sanguifluus](#) (L.A. Reeve, 1847)
- **sarissophorus**, [Fulgurofusus sarissophorus](#) (R.B. Watson, 1882)
- **scabra**, *Turbinella scabra* S.M. Souverbie, 1869 - syn of: [Peristernia scabra](#) (S.M. Souverbie, 1869)
- **scabrosa**, *Turbinella scabrosa* L.A. Reeve, 1847 - syn of: [Peristernia chlorostoma](#) (G.B. I Sowerby, 1825)
- **scolymoides**, *Turbinella scolymoides* W.H. Dall, 1890 - syn of: [Turbinella wheeleri](#) E.J. Petuch, 1994
- **scolymus**, *Turbinella scolymus* J.F. Gmelin, 1791 - syn of: [Turbinella angulata](#) (J. Lightfoot, 1786)
- **sinense**, [Columbarium sinense](#) S. Zhang, 2003
- **spinicinctum**, [Columbarium spinicinctum](#) (E.C. Von Martens, 1881)
- **spinosa**, *Turbinella spinosa* G.P. Deshayes, 1843 - syn of: [Peristernia columbarium](#) (J.F. Gmelin, 1791)
- **spinosa**, *Turbinella spinosa* R.A. Philippi, 1845 - syn of: [Latirus spinosus](#) (R.A. Philippi, 1845)
- **spinosum**, [Tudivasum spinosum](#) (H. Adams & A. Adams, 1864)
- **spinosus**, *Vasum spinosus* G. Fischer von Waldheim, 1807 - syn of: [Vasum ceramicum](#) (C. Linnaeus, 1758)
- **spiralis**, [Coluzea spiralis](#) (A. Adams, 1856)
- **spiralis**, *Tudicla spiralis* C. Linnaeus, 1767 - syn of: [Tudicla spirillus](#) (C. Linnaeus, 1767)
- **spirillus**, [Tudicla spirillus](#) (C. Linnaeus, 1767)
- **spirula**, *Tudicla spirula* C. Linnaeus, 1767 - syn of: [Tudicla spirillus](#) (C. Linnaeus, 1767)
- **stellatum**, [Columbarium pagoda stellatum](#) T. Habe, 1953
- **stephanti**, [Vasum stephanti](#) W.K. Emerson & W.E. Sage, 1988
- **striata**, *Turbinella striata* J.E. Gray, 1839 - syn of: [Peristernia striata](#) (W.H. Pease, 1868)
- **subcontractum**, [Columbarium subcontractum](#) (G.B. III Sowerby, 1902)
- **subnassatula**, *Turbinella subnassatula* S.M. Souverbie, 1872 - syn of: [Peristernia nassatula subnassatula](#) S.M. Souverbie, 1872
- **suteri**, *Coluzea suteri* E.A. Smith, 1915 - syn of: [Coluzea spiralis](#) (A. Adams, 1856)
- **suzukii**, [Columbarium suzukii](#) T. Habe & S. Kosuge, 1972
- **thersites**, *Turbinella thersites* L.A. Reeve, 1847 - syn of: [Africolaria thersites](#) (L.A. Reeve, 1847)
- **tigrina**, *Turbinella tigrina* J.B. Hombron & C.H. Jacquinot, 1852 - syn of: [Pollia wagneri](#) (H.E. Anton, 1838)
- **timor**, [Peristarium timor](#) (M.G. Harasewych, 1983)
- **tomicia**, *Fulgurofusus tomicia* J.H. McLean & B.G. Andrade, 1982 - syn of: [Fulgurofusus tomicici](#) J.H. McLean & B.G. Andrade, 1982
- **tomicici**, [Fulgurofusus tomicici](#) J.H. McLean & B.G. Andrade, 1982
- **trabeatum**, *Columbarium trabeatum* T. Iredale, 1936 - syn of: [Columbarium hedleyi](#) T. Iredale, 1936
- **triangularis**, [Vasum truncatum triangularis](#) (E.A. Smith, 1902)
- **triserialis**, *Turbinella triserialis* J.B.P.A. Lamarck, 1822 - syn of: [Leucozonia triserialis](#) (J.B.P.A. Lamarck, 1822)
- **truncatum**, [Vasum truncatum](#) (G.B. III Sowerby, 1892)
- **truncatum triangularis**, [Vasum truncatum triangularis](#) (E.A. Smith, 1902)
- **tuberculata**, [Turbinella tuberculata](#) H.E. Anton, 1838
- **tuberculata**, *Turbinella tuberculata* W.J. Broderip, 1833 - syn of: [Leucozonia tuberculata](#) (W.J. Broderip, 1833)
- **tubiferum**, [Vasum tubiferum](#) (H.E. Anton, 1838)
- **turbinellus**, [Vasum turbinellus](#) (C. Linnaeus, 1758)
- **turbinellus cornigerus**, [Vasum turbinellus cornigerus](#) (J.B.P.A. Lamarck, 1822)
- **typicum**, *Altivasum typicum* C. Hedley, 1916 - syn of: [Altivasum flindersi](#) (J.C. Verco, 1914)
- **unifasciata**, *Turbinella unifasciata* W. Wood, 1828 - syn of: [Latirus unifasciatus](#) (W. Wood, 1828)
- **urna**, *Vasum urna* P.F. Röding, 1798 - syn of: [Vasum muricatum](#) (I. von Born, 1778)
- **ustulata**, *Turbinella ustulata* L.A. Reeve, 1847 - syn of: [Peristernia ustulata](#) (L.A. Reeve, 1847)
- **variolaris**, *Vasum variolaris* J.B.P.A. Lamarck, 1822 - syn of: [Vasum turbinellus](#) (C. Linnaeus, 1758)
- **veridicum**, [Columbarium veridicum](#) R.K. Dell, 1963
- **vexillum**, *Turbinellus vexillum* L.A. Reeve, 1843 - syn of: [Latirus amplustre](#) (L.W. Dilwyn, 1817)
- **violacea**, *Turbinella violacea* L.A. Reeve, 1847 - syn of: [Peristernia violacea](#) (L.A. Reeve, 1847)
- **wheeleri**, [Turbinella wheeleri](#) E.J. Petuch, 1994
- **whincheri**, [Vasum globulus whincheri](#) E.J. Petuch, 2013

- wormaldi, [Coluzea wormaldi](#) (A.W.B. Powell, 1971)
 - xenismatis, [Fulgurofusus xenismatis](#) (M.G. Harasewych, 1983)
 - xenismatis, *Histicosceptrum xenismatis* (M.G. Harasewych, 1983) - syn of: [Fulgurofusus xenismatis](#) (M.G. Harasewych, 1983)
 - zanzibaricum, [Tudivasum zanzibaricum](#) (R.T. Abbott, 1958)
 - zealandica, *Turbinella zealandica* H.C. Küster & W. Kobelt, 1876 - syn of: [Peristernia zealandica](#) (H.C. Küster & W. Kobelt, 1876)
-

Class: GASTROPODA

--- Clade: CAENOGASTROPODA-HYPSOGASTROPODA-NEOGASTROPODA-MURICOIDEA

----- Family: **TURBINELLIDAE** Swainson, 1835

Habitat= Sea, Taxonomic order

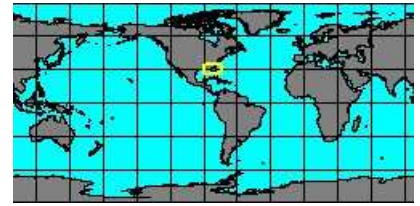
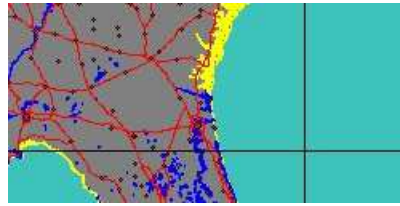
Taxa=276, Genus=12, Subgenus=4, Species=91, Subspecies=13, Synonyms=155, Images=87

SubFamily: COLUMBARIINAE - Genus: **Columbarium** E.C. Von Martens, 1881 (15 SP, 15 IMG)



2000754165
**Columbarium
bullatum**

(W.H. Dall, 1927)
Georgia, Fernandina



synonyms:

- *Fusinus bullatus* W.H. Dall, 1927



2000754005
**Columbarium
corollaceum**

S. Zhang, 2003
China, HaiNan



2000750050
**Columbarium
formosissimum**

J.R. le B. Tomlin, 1928
Mozambique
79 mm



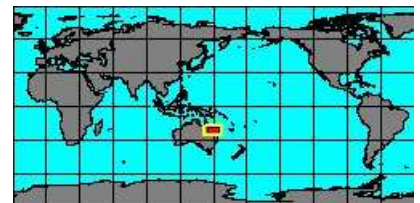
2000750055
**Columbarium
harrisae**

M.G. Harasewych, 1983
Australia, Lady Musgrave Island
105,3 mm



2000750060
**Columbarium
hedleyi**

T. Iredale, 1936
Australia, Swain Reef
43,5 mm



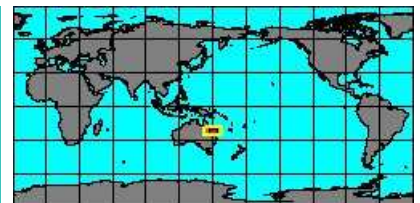
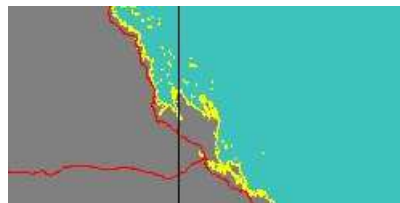
synonyms:

- *Columbarium trabeatum* T. Iredale, 1936



2000750065
**Columbarium
hystriculum**

T.A. Darragh, 1987
Australia, Capricorn Channel
70 mm



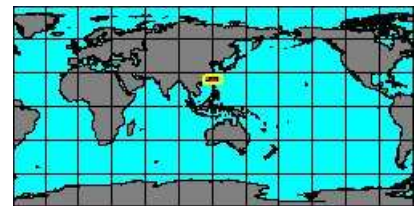
2000750085
**Columbarium
natalense**

J.R. le B. Tomlin, 1928
South Africa, Natal
28,6 mm





2000750090
Columbarium pagoda
 (R.P. Lesson, 1831)
 Taiwan
 76 mm



synonyms:

- *Fusus diadema* G.B. II Sowerby, 1880
- *Fusus japonicus* J.E. Gray, 1839

- *Columbarium diadema* G.B. II Sowerby, 1880
- *Fusus pagoda* R.P. Lesson, 1831



2000754195
Columbarium pagoda costatum
 T. Shikama, 1963
 East China Sea
 52 mm



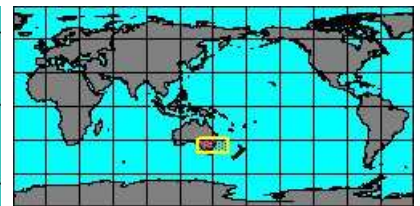
2000754000
Columbarium pagoda nakayasui
 T. Habe, 1979
 East China Sea
 63 mm



2000754185
Columbarium pagoda stellatum
 T. Habe, 1953
 Taiwan
 67 mm



2000754010
Columbarium pagodoides
 (R.B. Watson, 1882)
 Australia, New South Wales
 76 mm

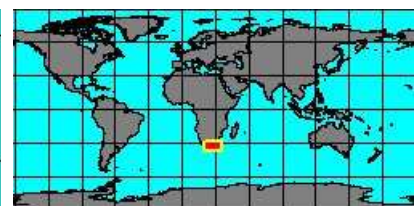


synonyms:

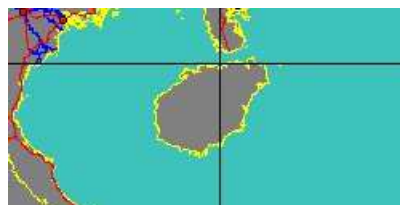
- *Fusus pagodoides* R.B. Watson, 1882



2000755062
Columbarium quadrativaricosum
 M.G. Harasewych, 2004
 South Africa, East London
 32 mm



2000754015
Columbarium sinense
 S. Zhang, 2003
 Hainan, China



2000750105
Columbarium spininctum
 (E.C. Von Martens, 1881)
 Australia, Cape Moreton
 63,7 mm

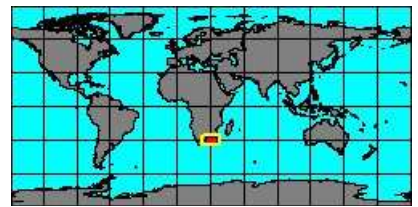


synonyms:

- *Columbarium caragarang* T.A. Garrard, 1966
- *Columbarium caragarang* T.A. Garrard, 1966



2000750110
Columbarium subcontractum
 (G.B. III Sowerby, 1902)
 Natal, South Africa
 59 mm

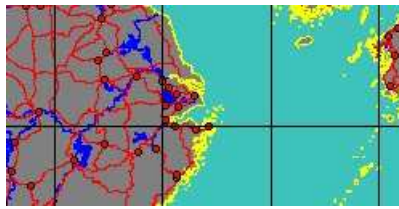


synonyms:

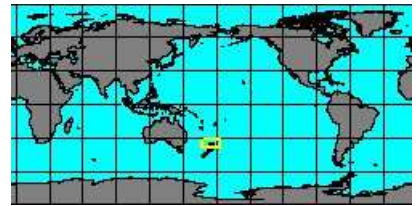
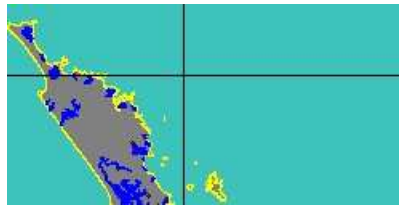
- *Fusus subcontractus* G.B. III Sowerby, 1902



2000754235
Columbarium suzukii
 T. Habe & S. Kosuge, 1972
 East China Sea
 72 mm



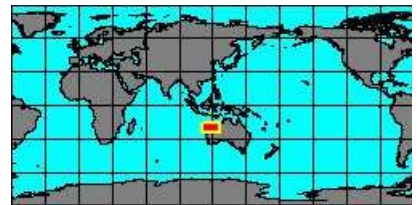
2000754255
Columbarium veridicum
 R.K. Dell, 1963
 Poor Knights Islands, New Zealand
 65 mm



SubFamily: COLUMBARIINAE - **Genus: Coluzea** H.J. Finlay, 1927 (24 SP, 19 IMG)



531800001
Coluzea apta
 M.G. Harasewych, 1986
 Australia, Port Hedland
 73 mm

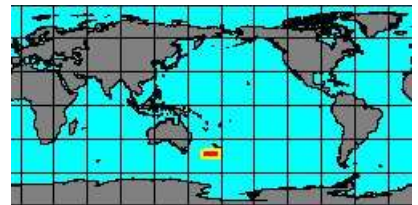


synonyms:

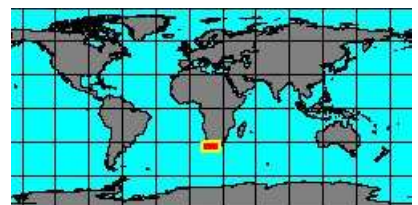
- *Columbarium aptos* M.G. Harasewych, 1986



2000750000
Coluzea altocanalis
 R.K. Dell, 1956
 New Zealand, South Island
 53 mm



2000754275
Coluzea angularis
 (K.H. Barnard, 1959)
 South Africa, Cape
 71,7 mm



2000750030
Coluzea berthae
 (D. Monsecour & K. Kreipl, 2003)
 Madagascar
 85 mm



2000754285
Coluzea bimurata
 T.A. Darragh, 1987
 Queensland
 37 mm



no
IMAGES
available

2000755005
Coluzea
canaliculatum
(E.C. Von Martens, 1901)
East Africa

No Georeferenced data available

no
IMAGES
available

2000755015
Coluzea
cingulata
(E.C. Von Martens, 1901)

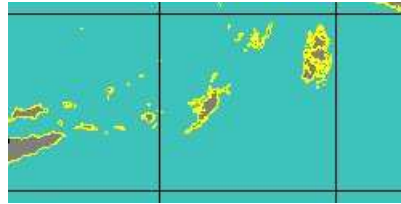
No Georeferenced data available

synonyms:

- Columbarium cingulatum E.C. Von Martens, 1901



5318000002
Coluzea
distephanotis
(J.C. Melville, 1891)
Arafura Sea, Tanimbar Island
77 mm



2000750040
Coluzea
eastwoodae
R.N. Kilburn, 1971
Mozambique
84 mm



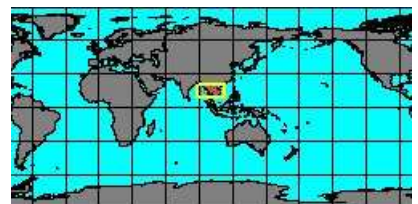
no
IMAGES
available

5318000003
Coluzea
faceta
M.G. Harasewych, 1991
New Caledonia

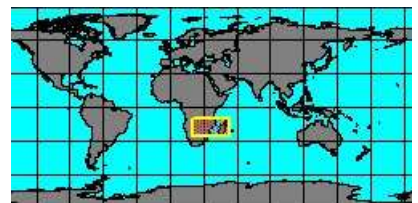


no
IMAGES
available

2000754295
Coluzea
gomphos
M.G. Harasewych, 1986
Thailand



5318000005
Coluzea
groschi
M.G. Harasewych & K. Fraussen, 2001
Mozambique
28,3 mm

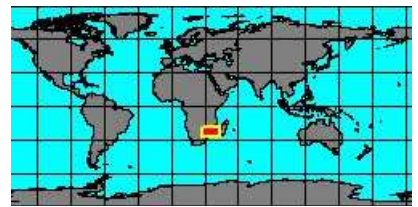


5318000004
Coluzea
icarus
M.G. Harasewych, 1986
Rowley Shoals, West Australia
70 mm





2000750070
Coluzea juliae
 M.G. Harasewych, 1989
 South Mozambique
 79 mm



5318000006
Coluzea kallistropa
 M.G. Harasewych, 2004
 Nacala Bay, Mozambique
 44 mm

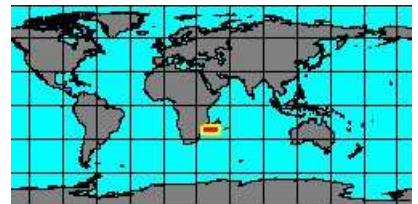


2000754305
Coluzea liriopae
 M.G. Harasewych, 1986
 Macassar Strats

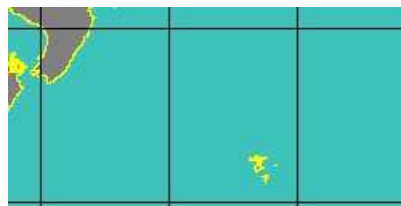
No Georeferenced data available



2000755050
Coluzea madagascarensis
 M.G. Harasewych, 2004
 SW Madagascar, 22°18' S, 43°05' E
 60 mm



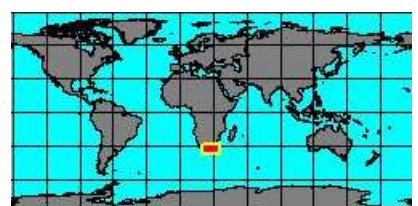
2000750075
Coluzea mariae
 A.W.B. Powell, 1952
 New Zealand, Chatham Rise
 93 mm



5318000008
Coluzea naxa
 M.G. Harasewych, 2004
 Bedwell Island, Western Australia
 55 mm



2000750095
Coluzea radialis
 (R.B. Watson, 1882)
 South Africa
 86,3 mm

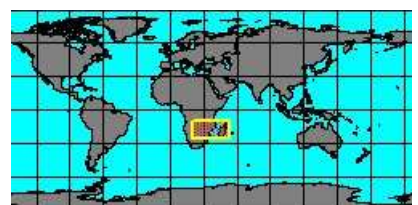


synonyms:

- *Fusus radialis* R.B. Watson, 1882

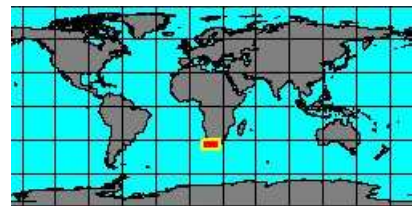


2000754335
Coluzea rosadoi
 L. Bozzetti, 2006
 Mozambique
 42 mm





2000750100
Coluzea rotunda
 (K.H. Barnard, 1959)
 South Africa, Cape
 68,6 mm



2000754355
Coluzea spiralis
 (A. Adams, 1856)
 New Zealand
 107 mm

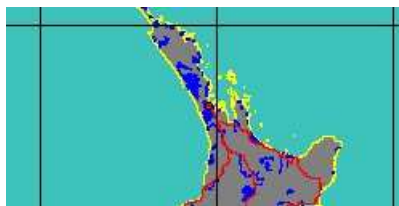


synonyms:

- Coluzea espinosa H.J. Finlay, 1930
- Coluzea pensum F.W. Hutton, 1873
- Fusus spiralis A. Adams, 1856
- Fusus pensum F.W. Hutton, 1873
- Coluzea suteri E.A. Smith, 1915



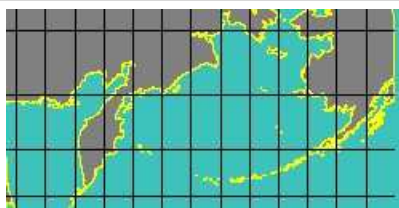
2000754265
Coluzea wormaldi
 (A.W.B. Powell, 1971)
 New Zealand, Bay of Plenty
 105 mm



SubFamily: COLUMBARIINAE - **Genus: Fulgurofusus** A.W. Grabau, 1904 (15 SP, 10 IMG)



5318000010
Fulgurofusus aequilonius
 A.V. Sysoev, 2000
 Bering Sea

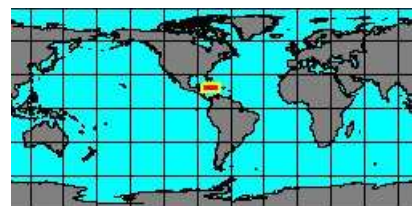


2000750010
Fulgurofusus atlantis
 (W.J. Clench & C.G. Aguayo, 1938)
 America

No Georeferenced data available



2000750020
Fulgurofusus bartletti
 (W.J. Clench & C.G. Aguayo, 1940)
 Jamaica
 44 mm

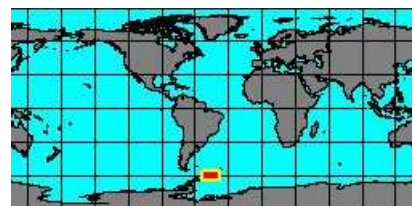
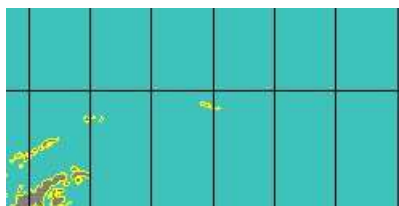


synonyms:

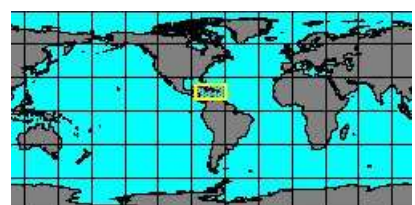
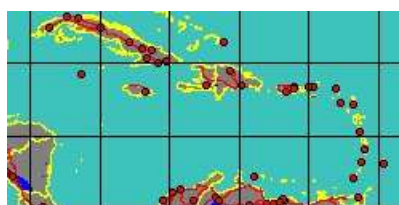
- Histricosceptrum bartletti (W.J. Clench & C.G. Aguayo, 1940)



2000754395
Fulgurofusus benthocallis
 (J.C. Melville & R. Standen, 1907)
 South Orkney Islands
 48 mm



2000750025
Fulgurofusus bermudezi
 (W.J. Clench & C.G. Aguayo, 1938)
 Caribbean

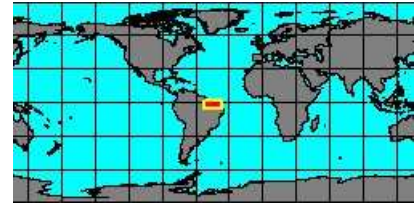
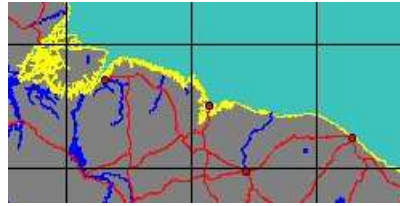




2000750035
**Fulgurofuscus
brayi**
(W.J. Clench, 1959)
Colombia



2000754405
**Fulgurofuscus
ecphoroides**
M.G. Harasewych, 1983
Brasil, Sao Luis



2000750045
**Fulgurofuscus
electra**
(F.M. Bayer, 1971)
Florida Keys
30 mm

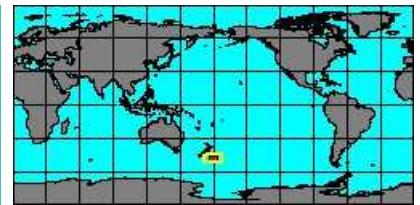


synonyms:

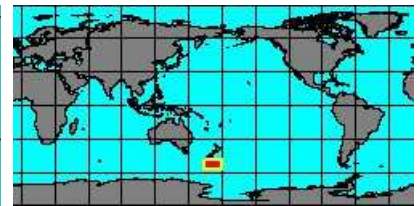
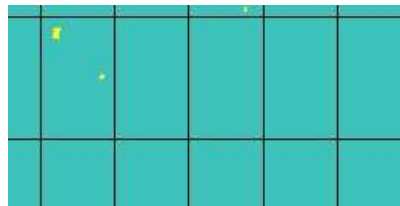
- Peristarium electra F.M. Bayer, 1971



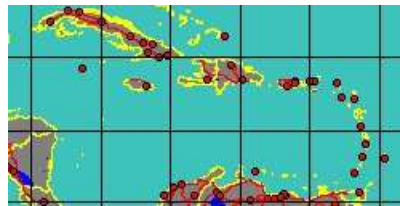
5318000011
**Fulgurofuscus
marshalli**
M.G. Harasewych, 2011
Bounty Plateau, New Zealand
26 mm



5318000012
**Fulgurofuscus
maxwelli**
M.G. Harasewych, 2011
Campbell Plateau, New Zealand
62 mm



2000750080
**Fulgurofuscus
merope**
(F.M. Bayer, 1971)
Caribbean

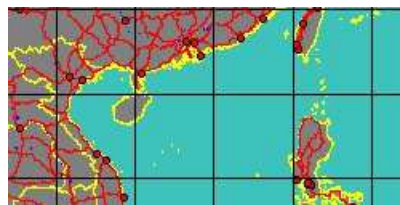


synonyms:

- Peristarium merope F.M. Bayer, 1971



2000755034
**Fulgurofuscus
nanshaensis**
S. Zhang, 2003
South China Sea
104 mm



2000755038
**Fulgurofuscus
sarissophorus**
(R.B. Watson, 1882)
Brasil, Pernambuco
7 mm



synonyms:

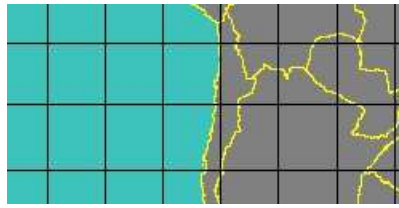
- Fusus sarissophorus R.B. Watson, 1882



2000754245
**Fulgurofusus
tomicici**

J.H. McLean & B.G. Andrade, 1982

Chile
61,2 mm



synonyms:

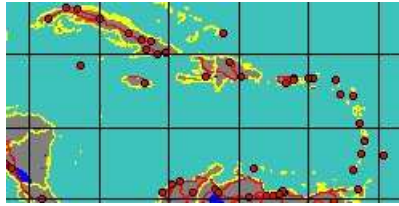
- Fulgurofusus tomicia J.H. McLean & B.G. Andrade, 1982



2000754445
**Fulgurofusus
xenismatis**

(M.G. Harasewych, 1983)

Caribbean
63 mm



synonyms:

- Histricospectrum xenismatis (M.G. Harasewych, 1983)

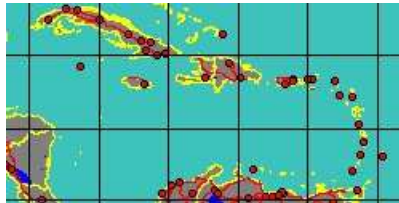
SubFamily: COLUMBARIINAE - **Subgenus: Fulgurofusus (Peristarium)** F.M. Bayer, 1971 (2 SP, 1 IMG)



2000750015
**Peristarium
aurora**

(F.M. Bayer, 1971)

Caribbean



2000754435
**Peristarium
timor**

(M.G. Harasewych, 1983)

South Carolina
57 mm



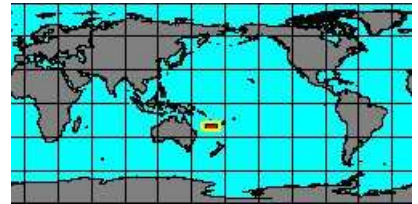
SubFamily: COLUMBARIINAE - **Genus: Fustifusus** M.G. Harasewych, 1991 (1 SP, 1 IMG)



2000754455
**Fustifusus
pinicola**

(T.A. Darragh, 1987)

New Caledonia
35,2 mm



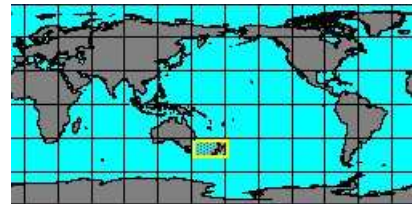
SubFamily: TURBINELLINAE - **Genus: Cryptofusus** A.G. Beu, 2011 (1 SP, 1 IMG)



531800009
**Cryptofusus
cryptocarinatus**

(R.K. Dell, 1956)

New Zealand



synonyms:

- Pleia cryptocarinata R.K. Dell, 1956

SubFamily: TURBINELLINAE - **Genus: Syrinx** P.F. Röding, 1798 (1 SP, 1 IMG)



196060000
**Syrinx
aruanus**

(C. Linnaeus, 1758)

Arafura Sea
370 mm



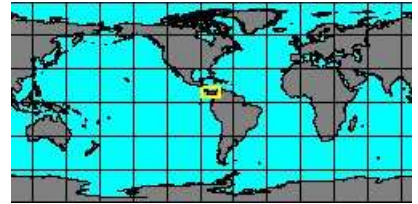
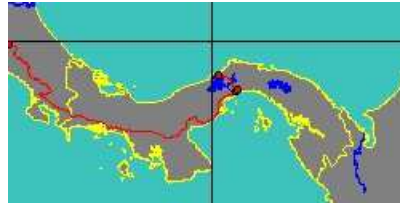
synonyms:

- Fusus incisus O.A.L. Mörch, 1852
- Syrinx incisus O.A.L. Mörch, 1852
- Fusus probosciferus J.B.P.A. Lamarck, 1822

- Syrinx probosciferus J.B.P.A. Lamarck, 1822



2000754575
**Turbinella
angulata**
(J. Lightfoot, 1786)
Panama
288 mm

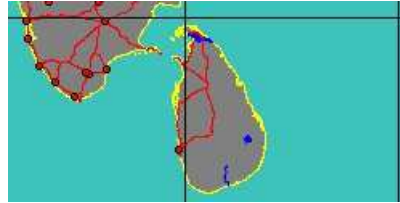


synonyms:

- Turbinella cardoscyllum G. Fischer von Waldheim, 1807
- Turbinella cynara P.F. Röding, 1798
- Turbinella scolymus J.F. Gmelin, 1791
- Buccinum scolymus J.F. Gmelin, 1791



2000754835
**Turbinella
fusus**
G.B. I Sowerby, 1825
Sri Lanka
236 mm



synonyms:

- Turbinella pyrum fusus G.B. I Sowerby, 1825



2000354000
**Turbinella
laevigata**
H.E. Anton, 1838
Brasil, Fortaleza
197 mm



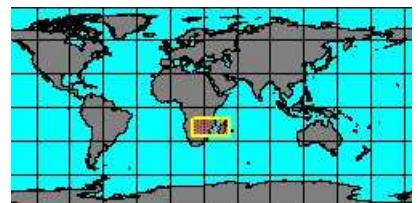
2000754625
**Turbinella
laevigata
ovoidea**
L.C. Kiener, 1840
Brasil, Fortaleza
144 mm



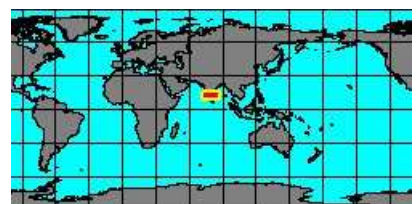
2000754615
**Turbinella
laevigata
rianae**
A. Delsaerd, 1986
Guyana
151 mm



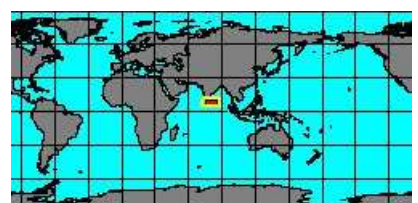
2000354005
**Turbinella
laffertyi**
R.N. Kilburn, 1975
Mozambique
215 mm



2000754645
**Turbinella
ponderosa**
(J. Lightfoot, 1786)
India



2000354010
**Turbinella
pyrum**
(C. Linnaeus, 1767)
Sri Lanka
152 mm



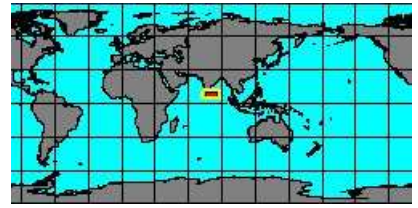
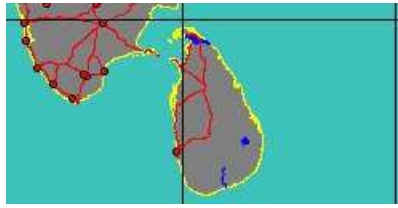
synonyms:

- Turbinella caerulea G. Perry, 1811
- Volema curtangniona P.F. Röding, 1798
- Voluta pyrum C. Linnaeus, 1767

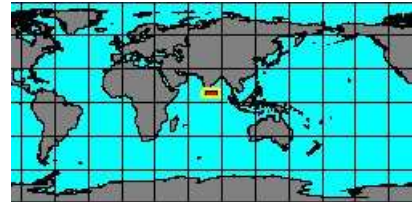
- Turbinella caerulea G. Perry, 1811
- Turbinella pyriformis G. Perry, 1811
- Turbinella rapa J.B.P.A. Lamarck, 1843



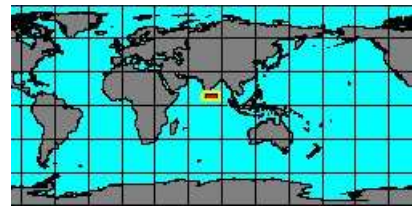
2000754685
**Turbinella
pyrum
comorinensis**
(J. Hornel, 1916)
Sri Lanka
122 mm



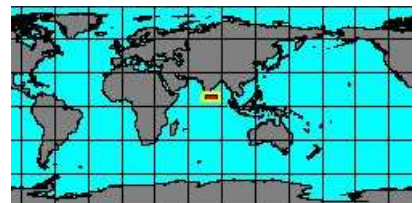
2000754675
**Turbinella
pyrum
dentata**
Unknown
Sri Lanka



2000754655
**Turbinella
pyrum
napus**
J.B.P.A. Lamarck, 1822
Sri Lanka
213 mm



2000754665
**Turbinella
pyrum
obtusa**
Unknown Author
Sri Lanka
86 mm



5318000015
**Turbinella
tuberculata**
H.E. Anton, 1838

No Georeferenced data available

synonyms:

- Fasciolaria tuberculata H.E. Anton, 1838



2000754715
**Turbinella
wheeleri**
E.J. Petuch, 1994
Yucatan, Mexico
270 mm



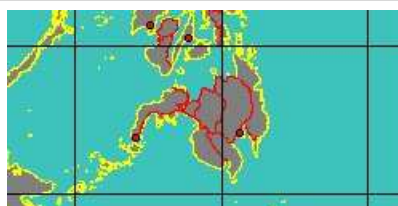
synonyms:

- Turbinella scolymoides W.H. Dall, 1890

SubFamily: VASINAE - **Genus: Enigmavasum** G.T. Poppe & S.P. Tagaro, 2005 (1 SP, 1 IMG)



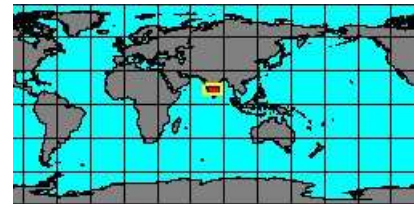
2000754375
**Enigmavasum
enigmaticum**
G.T. Poppe & S.P. Tagaro, 2005
Philippines, Mindanao
30 mm



SubFamily: VASINAE - **Genus: Tudicla** P.F. Röding, 1798 (syn: Pyrenela, Pyropsis, Spirillus - 1 SP, 1 IMG)



2000200005
Tudicla spirillus
(C. Linnaeus, 1767)
Madras, India
71,4 mm



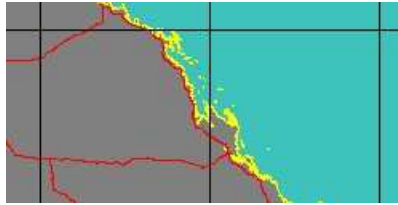
synonyms:

- Tudicla capitatus G. Perry, 1811
- Tudicla spiralis C. Linnaeus, 1767
- Tudicla spirula C. Linnaeus, 1767
- Tudicla carinata P.F. Röding, 1798
- Murex spirillus C. Linnaeus, 1767

SubFamily: VASINAE - **Genus: Tudivasum** G. Rosenberg & R. Petit, 1987 (syn: Tudicula - 6 SP, 6 IMG)



2000200000
Tudivasum armigerum
(A. Adams, 1856)
Australia, Swain Reef
70 mm



synonyms:

- Tudivasum armigera A. Adams, 1855



2000754535
Tudivasum inermis
(G.F. Angas, 1878)
Rowley Shoals, West Australia
45 mm



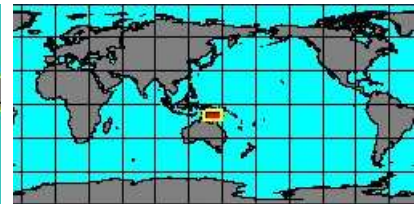
2000754815
Tudivasum kurtzi
(J.H. Macpherson, 1964)
Northern Territory
70 mm



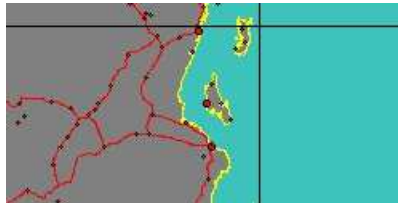
2000150000
Tudivasum rasilistoma
(R.T. Abbott, 1959)
Australia, Townsville
65,4 mm



2000754555
Tudivasum spinosum
(H. Adams & A. Adams, 1864)
Australia, Torres Strait
64,6 mm



2000150005
Tudivasum zanzibaricum
(R.T. Abbott, 1958)
Zanzibar island
52 mm



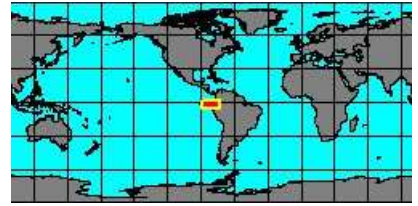
SubFamily: VASINAE - **Genus: Vasum** P.F. Röding, 1798 (syn: Cynodonta, Scolymus, Volutella, Siphovasum - 15 SP, 18 IMG)



2000754725
Vasum armatum
 (W.J. Broderip, 1833)
 French Polynesia
 72 mm



2000754745
Vasum caestus
 (W.J. Broderip, 1833)
 Ecuador
 135 mm

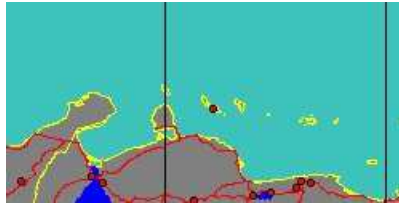


synonyms:

- *Vasum ardeola* A. Valenciennes, 1832



2000000000
Vasum capitellum
 (C. Linnaeus, 1758)
 Curacao
 79,6 mm



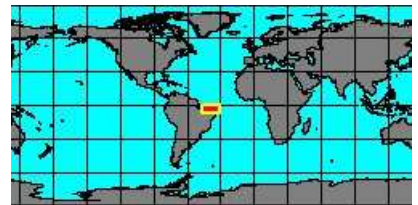
synonyms:

- *Turbinella mitis* J.B.P.A. Lamarck, 1822
- *Vasum mitis* J.B.P.A. Lamarck, 1822
- *Vasum rubescens* G. Perry, 1811

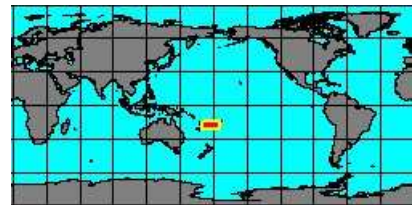
- *Volutella rubescens* G. Perry, 1811



2000000005
Vasum cassiforme
 (L.C. Kiener, 1840)
 Brasil, Fortaleza
 102 mm



2000004000
Vasum ceramicum
 (C. Linnaeus, 1758)
 Fiji Islands
 78 mm

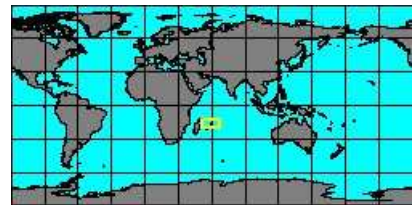


synonyms:

- *Vasum ceramicum* C. Linnaeus, 1758
- *Vasum spinosus* G. Fischer von Waldheim, 1807



2000754515
Vasum crosseanum
 (S.M. Sowerbie, 1876)
 Coco Island, Mauritius
 90 mm



2000000015
Vasum globulus
 (J.B.P.A. Lamarck, 1816)
 Antigua Island
 43 mm



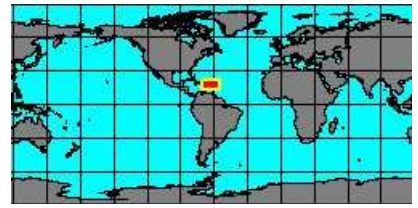
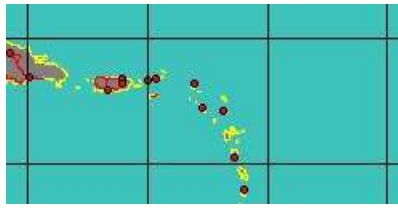
synonyms:

- *Voluta globosa* L.W. Dilwyn, 1817
- *Turbinella globulus* J.B.P.A. Lamarck, 1816

- *Vasum globulus antiguensis* G.W. Nowell-Usticke, 1969



200000020
**Vasum
 globulus
 nuttingi**
 (J. Henderson, 1919)
 Antigua Island
 30 mm



synonyms:

- Turbinella nuttingi J. Henderson, 1919

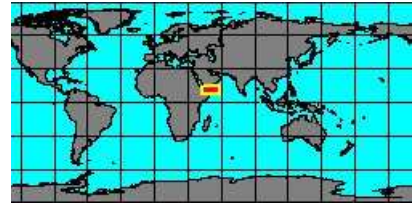


531800023
**Vasum
 globulus
 whincheri**
 E.J. Petuch, 2013

No Georeferenced data available



2000004010
**Vasum
 lactisfloris**
 M. Ferrario, 1983
 Ras Hafun, Somalia
 77 mm



2000754755
**Vasum
 latiriforme**
 H.A. Rehder & R.T. Abbott, 1951
 Tanzania
 65 mm



2000000025
**Vasum
 muricatum**
 (I. von Born, 1778)
 Florida Keys
 84 mm



synonyms:

- Vasum divergens G. Perry, 1810
- Volutella divergens G. Perry, 1810
- Vasum urna P.F. Röding, 1798

- Voluta muricata I. von Born, 1778



2000004020
**Vasum
 rhinoceros**
 (J.F. Gmelin, 1791)
 Zanzibar Island
 48 mm



synonyms:

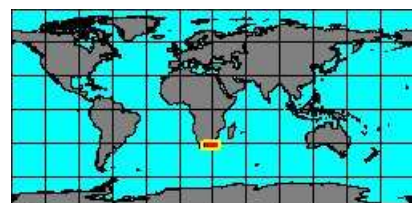
- Voluta rhinoceros J.F. Gmelin, 1791
- Vasum rhinoceros J.F. Gmelin, 1791



2000754765
**Vasum
 stephanti**
 W.K. Emerson & W.E. Sage, 1988
 Somalia
 58 mm

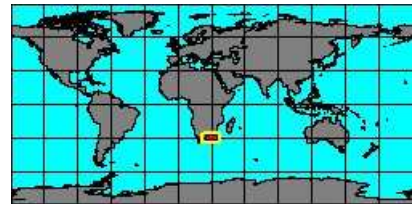


2000004030
**Vasum
 truncatum**
 (G.B. III Sowerby, 1892)
 Transkei, South Africa
 71 mm

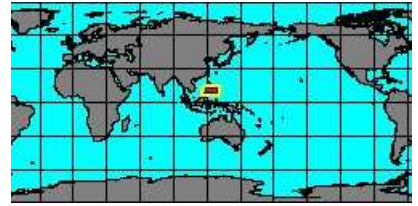
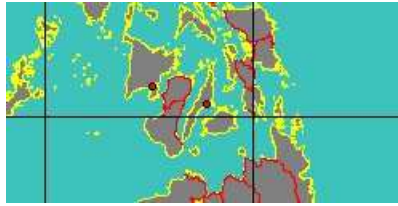




2000004025
**Vasum
truncatum
triangularis**
(E.A. Smith, 1902)
South Africa, Nata
78 mm



2000004015
**Vasum
tubiferum**
(H.E. Anton, 1838)
Philippines, Cebu
93 mm

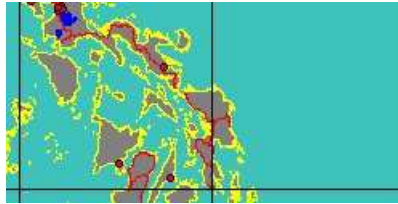


synonyms:

- Turbinellus imperialis L.A. Reeve, 1843



2000000030
**Vasum
turbinellus**
(C. Linnaeus, 1758)
Philippines, Samar Island
72,8 mm



synonyms:

- Turbinella cornigera J.B.P.A. Lamarck, 1822
- Volutella nigra G. Perry, 1811
- Vasum variolaris J.B.P.A. Lamarck, 1822
- Vasum nigra G. Perry, 1811
- Vasum nigricans G. Perry, 1811



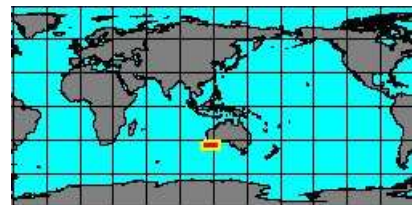
2000754785
**Vasum
turbinellus
cornigerus**
(J.B.P.A. Lamarck, 1822)
Sinai, Egypt
83 mm



SubFamily: VASINAE - **Subgenus: Vasum (Altivasum)** C. Hedley, 1914 (1 SP, 1 IMG)



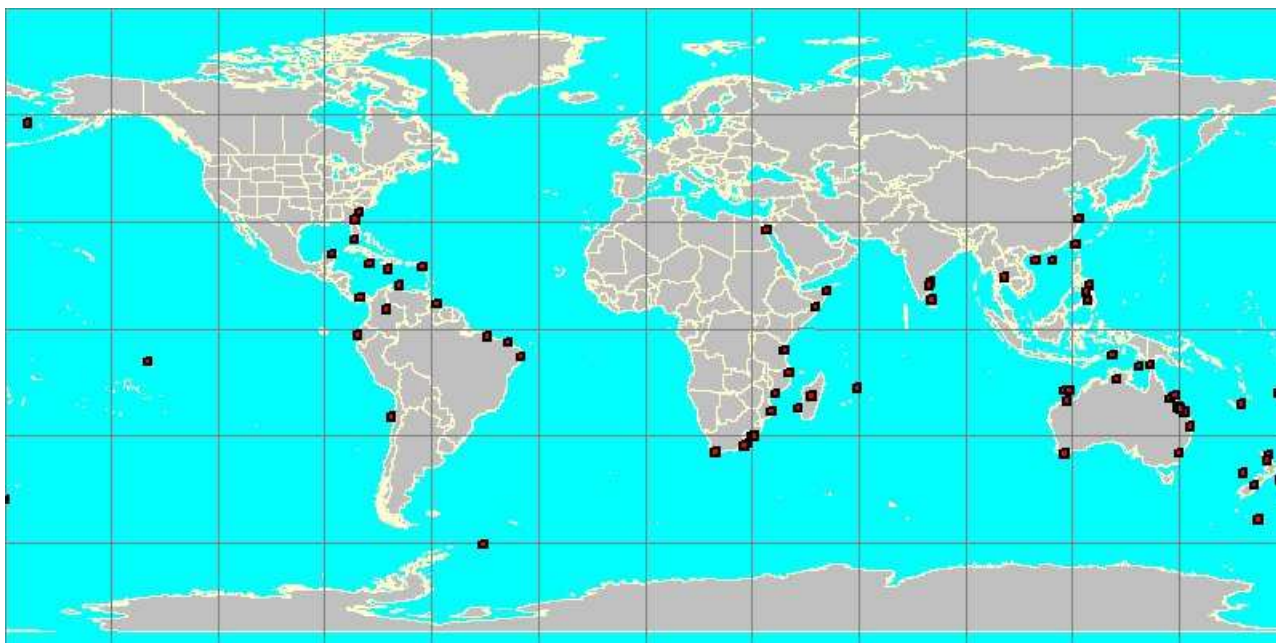
2000004005
**Altivasum
flindersi**
(J.C. Verco, 1914)
Albany, West Australia



synonyms:

- Latirus aurantiacus J.C. Verco, 1895
- Vasum auranticus J.C. Verco, 1895
- Altivasum typicum C. Hedley, 1916
- Vasum flindersi J.C. Verco, 1914

Family: TURBINELLIDAE



red squares show where each species has been georeferenced

each square has a size of 2 degrees

an interactive version of this image can be accessed at

<http://www.bagniliggia.it/WMSD/FamilyMap/TURBINELLIDAEmap.htm>

please note that this is not the complete coverage of this family

the Data Base is not exhaustive and only one specimen per species has been georeferenced

this map is only the graphic summary of the WMSDB Data Base up to now

the total number of georeferenced species in this map is: 98 from a total of 104