

The food web of Potter Cove (Antarctica): complexity, structure and function

Tomás I. Marina^{1,2,3,*}, **Vanesa Salinas**^{1,2}, **Georgina Cordone**^{1,2}, **Gabriela Campana**³,
María Eugenia Moreira⁴, **Dolores Deregibus**⁴, **Luciana Torre**⁵, **Ricardo Sahade**^{5,6},
Marcos Tatián^{5,6}, **Esteban Barrera Oro**⁴, **Marleen De Troch**⁷, **Santiago Doyle**², **María**
Liliana Quartino^{8,9}, **Leonardo Saravia**², **Fernando R. Momo**^{2,6}

¹ Consejo Nacional de Investigaciones Científicas y Técnicas (CONICET)

² Instituto de Ciencias Universidad Nacional de General Sarmiento, J.M. Gutierrez 1150 (1613),
Los Polvorines, Argentina

³ INEDES, Universidad Nacional de Luján, CC 221, 6700 Luján, Argentina

⁴ Instituto Antártico Argentino, Cerrito 1248 (C1010AAZ), Ciudad Autónoma de Buenos Aires,
Argentina

⁵ Instituto de Diversidad y Ecología Animal, Consejo Nacional de Investigaciones Científicas y
Técnicas/Universidad Nacional de Córdoba, Córdoba, Argentina

⁶ Ecología Marina, Facultad de Ciencias Exactas, Físicas y Naturales, Universidad Nacional de
Córdoba, Av. Vélez Sarsfield 299 (5000), Córdoba, Argentina

⁷ Marine Biology Laboratory, Ghent University, Krijgslaan 281/S8, (B-9000), Ghent, Belgium

⁸ Dirección Nacional del Antártico, Instituto Antártico Argentino, Departamento de Biología
Costera, 25 de mayo 1143, San Martín (CP 1650), Buenos Aires, Argentina

⁹ Museo Argentino de Ciencias Naturales B. Rivadavia. Av. A. Gallardo 470 (C1405DJR),
Buenos Aires, Argentina

* Corresponding author: tomasimarina@gmail.com

Abstract

The study of food web structure and complexity are central to better understand ecosystem functioning. A food-web approach includes both species and energy flows among them, providing a natural framework for characterizing species' ecological roles and the mechanisms through which biodiversity influences ecosystem dynamics. Here we present for the first time a high-resolution food web for the Potter Cove marine ecosystem (Antarctica). We studied eleven food web properties to analyze network complexity, structure and topology. We found a low linkage density (3.4), connectance (0.04) and omnivory percentage (45), as well as short path length (1.8) and low clustering coefficient (0.08). Furthermore, relating the structure of the web to its dynamics, we found an exponential degree distribution (in- and out-links) suggesting that Potter Cove food web may be fragile if the most connected species got extinct. For two of the three more connected functional groups, competition overlap graphs reflect high trophic interaction between demersal fish and niche specialization according to feeding strategies in amphipods. On the other hand, it can be inferred from the prey overlap graph that multiple energy pathways of carbon flux exist across benthic and pelagic habitats in Potter Cove ecosystem. Although alternative food sources might add robustness to the web, network properties (low linkage density, connectance and omnivory) suggest fragility and potential trophic cascade effects.

Key words: Antarctica; complex networks; degree distribution; marine ecosystem; structure; trophic interactions.

Introduction

Food web (FW) characterization is essential to ecology as a way to describe and quantify the complexity of ecosystems by identifying the trophic interactions among species (Bascompte 2009). The framework of ecological network analysis could also be used to quantify the effects of the environment and how indirect effects of such interactions influences overall ecosystem's properties (Brose & Dunne 2009).

Marine FWs have received less attention than freshwater or terrestrial ones. However, since the early 2000s, ecological networks from marine systems have been studied answering to the emphatical call of Raffaelli (2000) for more research on marine webs. Among marine webs, polar FWs began to be studied recently in the frame of FW theory (e.g. Jacob et al. 2006, Bodini et al. 2009, de Santana et al. 2013); moreover, some conclusions about the effects of global warming on Arctic and Antarctic marine FWs have been proposed (de Santana et al. 2013, Kortsch et al. 2015).

Potter Cove is an Antarctic fjord that suffers the impact of the high rate of warming occurring in Western Antarctic Peninsula (Quartino et al. 2013, Deregibus et al. 2016). This Cove is actually subjected to high sedimentation rates, and its abundant and diverse epibenthic fauna is changing by considerable sediment inputs and other effects derived from the ice melting (Pasotti et al. 2015a, Sahade et al. 2015). The way in which network properties will be modified under climate change is in general poorly known (Petchey et al. 2010, Walther 2010, Woodward et al. 2010). To understand the community-level consequences of the rapid polar warming, Wirta et al. (2015) suggested that we should turn from analyses of populations, population pairs, and isolated predator–prey couplings to considering all the species interacting within communities. If species affected by perturbations possess key functional roles in the FW, then the potential higher order,

indirect effects of those perturbations on the entire FW structure can be dramatic (Kortsch et al. 2015). Knowing that climate change effects are already occurring in Potter Cove ecosystem and that ecosystems respond to perturbations as a whole, a network approach could contribute to a better understanding of changes in ecosystem's synthetic properties like resilience or stability. A representative roadmap of trophic interactions of Potter Cove will allow testing for ongoing climate change effects (e.g. glacier retreat, loss of ice shelves, increment of sedimentation input) that might be transmitted throughout the entire ecosystem.

Despite FW studies use binary webs that indicate the presence of a trophic interaction but provide no information on the frequency of the interaction or the rate of biomass flow through the interaction, overlap graphs, such as competition and common-enemy graphs, can provide information about indirect interaction strength between predators and prey, respectively. Indirect effects in predator and prey communities might also be studied by evaluating such graphs. The strength of predator-predator and prey-prey indirect interactions is extremely difficult to measure but, if they prove generally prevalent, they could be a major driver of community dynamics and ecosystem functioning (Woodward et al. 2005). The analysis of the degree distribution of links in the overlap graphs, omitted in most FW studies, might be very useful to identify, from the competition graph, generalist and specialist predators, and to evaluate energy pathways in the common-enemy graph.

In this paper, we present the first, detailed analysis of the FW for the Potter Cove ecosystem (South Shetland Islands, Antarctica). The objectives of this study were to: 1) analyze the complexity and structure of the ecological network in the context of the most-studied marine FWs; and 2) examine its degree distribution and overlap graphs in order to gain insight into the ecosystem dynamics and functioning.

Methods

Potter Cove is a 4 km long, 2.5 km wide Antarctic fjord located at 25 de Mayo/King George Island (62°14'S, 58°40'W, South Shetland Islands) (Fig. 1). A shallow sill (< 30 m) separates its inner and outer areas. The inner cove is characterized by soft sediments and by a shallower depth than the outer cove (< 50 m); in the outer cove the bottom is mainly rocky and depths are around 100 m. Potter Cove is adjacent to Maxwell Bay, which connects to the Bransfield Strait.

Circulation in Potter Cove is strongly influenced by the general circulation of Maxwell Bay (Roese & Drabble 1998). A cyclonic circulation has been identified, with efficient water renewal in the northern sector, where water from Maxwell Bay enters the Cove. Freshwater input varies both seasonally and inter-annually and carries important amounts of suspended sediments. Two main creeks discharge into the Cove, the Matias and the Potter creeks. They exhibit different regimes, the first being snowy and lacustrine, the latter snowy and glacial (Varela 1998).

Drainage ranged between 0.03 and 0.11 m³ s⁻¹ in the Matias Creek and from 0.08 to 3.8 m³ s⁻¹ in Potter Creek (Varela 1998). Suspended sediment discharges ranged between 0.04 and 15 kg m⁻³ (average = 0.14 kg m³), in correlation with air temperature; this is consistent with data from other glaciomarine environments in Antarctic coastal waters (Leventer & Dunbar 1985).

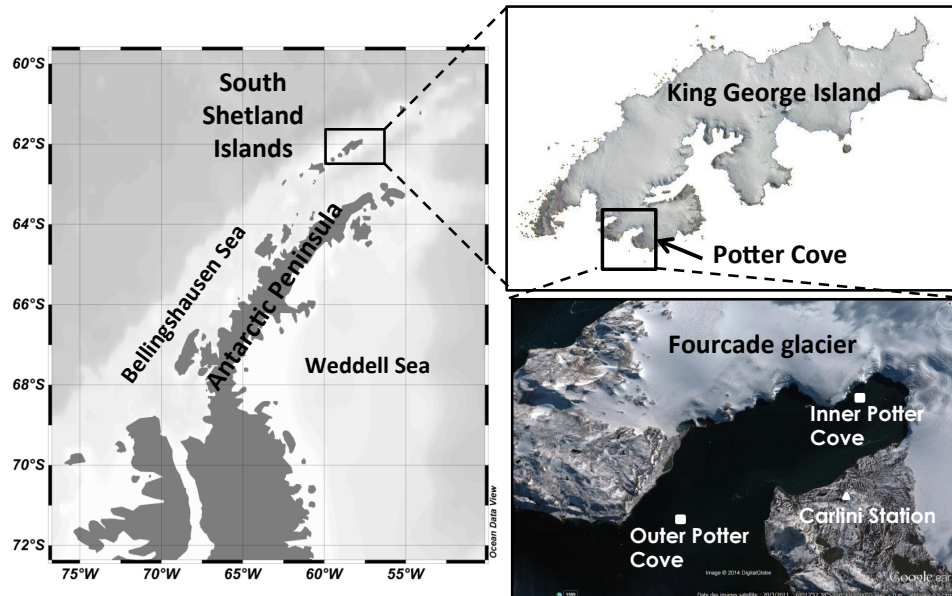


Figure 1. Map of Potter Cove and its location on Isla 25 de Mayo/King George Island.

Food web assembly

We constructed the FW of Potter Cove ecosystem based primarily upon information about species living in that system and their feeding habits from studies within the framework of an international research cooperation between Argentina and Germany initiated in 1994 and continued for more than 20 years (Wiencke et al. 1998, 2008).

We collected the information on feeding links by a thorough literature search (> 500 papers and reports revised). To assemble the network we only considered trophic interactions confirmed by gut content studies and/or field observation. Furthermore, direct observations of researchers while doing field samplings in the Cove (e.g. divers when collecting benthic samples) were also taken into account. Laboratory experimental studies, where feeding selectivity, palatability or behavior was tested, were not included in this study as we consider they are not proofs of feeding links as robust as the ones gathered from the field. Investigations using biomarkers (i.e. stable isotopes and fatty acids) were not considered since trophic interactions are established by

sampling few individuals ($n \approx 10-100$) and studied prey-predator relationships are usually between trophic species. Further details of trophic links (references and methods used to confirm a link) are presented in the electronic supplementary material (Data S1).

Trophospecies, here defined as aggregated groups of taxa, were only considered when data on biological species was not available (lack of data resolution) or when taxa share the same set of predators and prey within the FW (trophic similarity criteria). We have not considered top vertebrate predators (e.g. penguins, seals, whales), as they sporadically enter the Cove to feed. In addition, the fish taken by Antarctic penguins and pinnipeds are mostly pelagic and the occurrence of pelagic fish in inshore areas, like Potter Cove, is rarely reported (Barrera-Oro & Casaux 2008).

The diversity of authors contributing to the present study is a key factor for the quality of the FW, and inherently improves the network representation of Potter Cove ecosystem.

Network analysis

An interaction matrix of pairwise interactions was built; a value of 1 or 0 was assigned to each element a_{ij} of the matrix depending on whether the j -species preyed or not on the i -species. The FW is an oriented graph with L trophic links between S nodes or species. The FW graph was drawn from the interaction matrix using Visone software version 2.9.2 (Brandes & Wagner 2004).

Several network properties that are commonly used to describe complexity and structure in FWs were calculated (Dunne et al. 2002b, de Santana et al. 2013): (1) number of species, S ; (2) total number of interactions or trophic links, L ; (3) number of interactions per species or linkage density, L/S ; (4) connectance or trophic links divided by total number of possible interactions,

$C=L/S^2$; percentage of (5) top species (species with prey but without predators), (6) intermediate species (species with prey and predators), (7) basal species (species with predators/consumers but without prey); and (8) percentage of omnivores (species eating prey from more than one trophic level).

Trophic levels (TL) of species were calculated using the short-weighted TL formula by Williams & Martinez (2004). Short-weighted trophic level is defined as the average of the shortest TL and prey-averaged TL . Shortest TL of a consumer in a food web is equal to 1 + the shortest chain length from this consumer to any basal species (Williams & Martinez 2004). Prey averaged TL is equal to 1 + the mean TL of all consumer's trophic resources, calculated as

$$TL_j = 1 + \sum_{i=1}^S l_{ij} \frac{TL_i}{n_j}$$

where TL_j is the trophic level of species j ; S is the total number of species in the food web; l_{ij} is the connection matrix with S rows and S columns, in which for column j and row i , l_{ij} is 1 if species j consumes species i and 0 if not; and n_j is the number of prey species in the diet of species j . Therefore, Short-weighted TL yields a minimum estimate of TL and assumes a value of 1.0 for basal species (Williams & Martinez 2004). We considered the mean TL of the web as the average of all species' TL .

Two secondary graphs, the competition graph and the common-enemy graph, were obtained. The first one, also known as predator overlap graph, connects predators that share one or more prey, while the latter is drawn by connecting prey species sharing one or more predators (Pimm et al. 1991). Predator overlap graph results were discussed considering dietary data on each predator species involved. To examine a plausible organization in predator and prey species, we separately studied the degree distribution of links $P(k)$ for each overlap graph. Links in predator

distribution represent number of prey, while in prey distribution it depicts number of predators. Graphs were plotted using Visone software (version 2.9.2).

We also studied the topology of the FW by measuring three more properties: (9) characteristic path length (ChPath), or the average shortest path length between all pairs of species, (10) clustering coefficient (CC), or the average fraction of pairs of species connected to the same species that are also connected to each other, and (11) degree distribution, or the fraction of trophic species $P(k)$ that have k or more trophic links (both predator and prey links) (Albert & Barabási 2002). Trophic links were treated as undirected when calculating path length and clustering because effects can propagate through the web in either direction, through changes to both predator and prey species (Watts & Strogatz 1998).

Results of these properties and the ones aforementioned for Potter Cove FW were compared among other marine webs that were chosen considering different criteria: size ($S > 25$), temporal era (fourth era, see Link et al. 2005) and quality data (i.e. FWs built upon stable isotopes were excluded).

Degree distributions of the total FW and of the mentioned overlap graphs were examined and fitted using nonlinear regression analysis (Xiao et al. 2011). Model selection was performed by computing the Akaike Information Criterion corrected for small sample size (AICc) (Burnham & Anderson 2002, Xiao et al. 2010). R package *nls* (Nonlinear Least Squares) was used to make power-law and exponential fitting (R Core Team 2016).

Results

Potter Cove FW (Fig. 2) includes 91 species, from which 71 are species in a taxonomic sense, 17 are trophospecies (i.e., merging two or more taxonomic species by trophic similarity) and 3 are non-living nodes (fresh detritus, aged detritus and necromass).

Algae (24 species) comprise red (13 spp.), brown (7) and green algae (4). Next trophic levels consist of 13 species of amphipods, 3 species of isopods, 4 species of sponges (one aggregated node: *Stylocordyla borealis* and *Mycale acerata*), 5 species of gastropods, 2 species of bivalves, 7 species of echinoderms, as well as 9 species of demersal fish. See electronic supplementary material (Data S2) for exhaustive lists of taxa, their trophic level, degree (in- and out-links), functional and taxonomic group affiliation (e.g. algae, phytoplankton, zooplankton, fish, amphipods).

The first thing to note about Potter Cove FW is that most of the species (47%) are at intermediate levels, meaning that they act as predators and prey depending on the trophic interaction they are involved. Moreover, as shown in Fig. 2 some species are far more connected (9 species with degree > 15) than others, according to the total number of trophic interactions they have (e.g. fish and echinoderms).

Properties of network complexity for Potter Cove FW exhibited 307 total interactions and a linkage density of 3.4. As a consequence, connectance presented a value of 0.04 (Table 1).

Although intermediate species outnumbered top and basal species, comprising more than half of the species in the FW, the basal species were also well represented (Table 1). In addition, almost half of the species were omnivorous (45%), similar to the percentage observed in intermediate species.

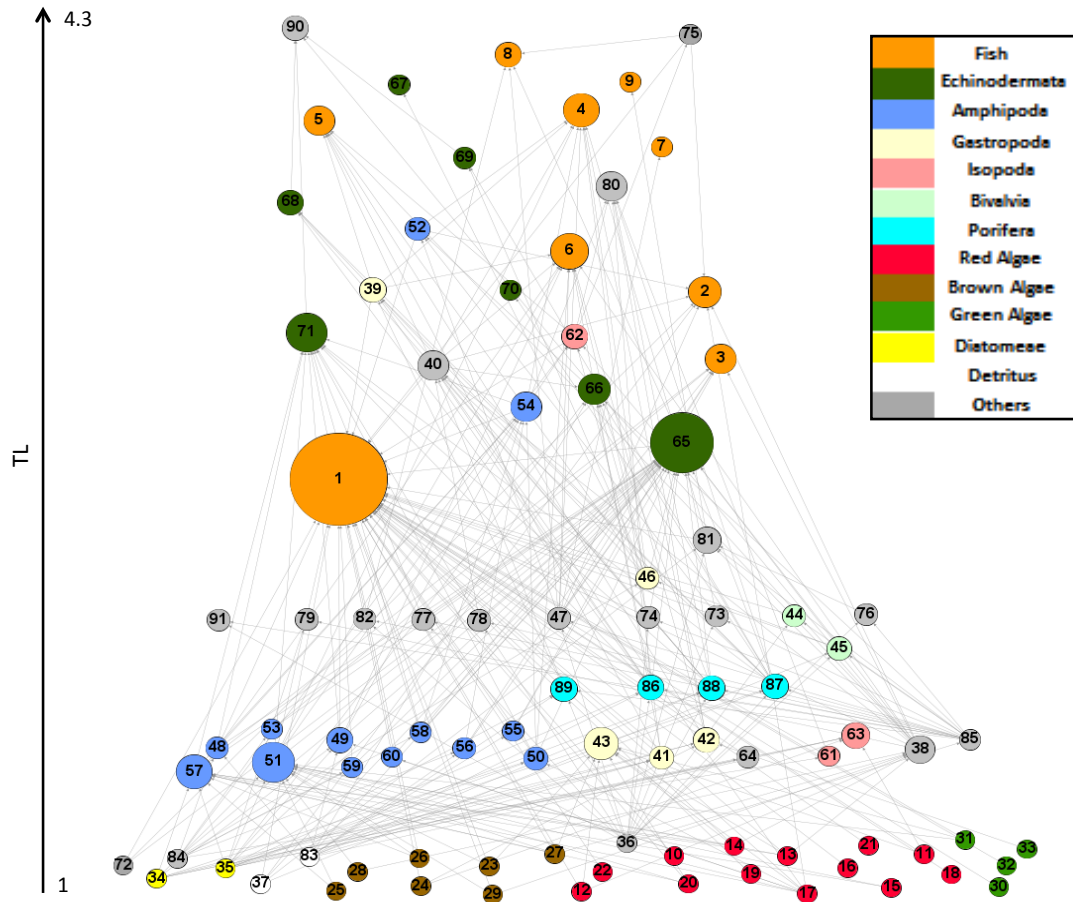


Figure 2. Graphic representation of Potter Cove FW. Vertical position is the trophic level (TL). Node width is proportional to the total degree (in- and out-). Node colors are by functional group. Network was plotted with Visone (version 2.9.2). 1 = *Notothenia coriiceps*, 2 = *Notothenia rossii*, 3 = *Lepidonotothen nudifrons*, 4 = *Trematomus newnesi*, 5 = *Trematomus bernacchi*, 6 = *Harpagifer antarcticus*, 7 = *Parachaenichthys charcoti*, 8 = *Chaenocephalus aceratus*, 9 = *Protomyctophum sp.*, 10 = *Callophyllis atrosanguinea*, 11 = *Curdiea racovitzae*, 12 = *Georgiella confluens*, 13 = *Gigartina skottsbergii*, 14 = *Iridaea cordata*, 15 = *Myriogramme manginii*, 16 = *Neuroglossum delesseriae*, 17 = *Palmaria decipiens*, 18 = *Pantoneura plocamioides*, 19 = *Picconiella plumosa*, 20 = *Plocamium cartilagineum*, 21 = *Pyropia plocamiestris*, 22 = *Trematocarpus antarcticus*, 23 = *Adenocystis utricularis*, 24 = *Ascoseira mirabilis*, 25 = *Desmarestia anceps*, 26 = *Desmarestia antarctica*, 27 = *Desmarestia menziesii*, 28 = *Geminocarpus geminatus*, 29 = *Phaeurus antarcticus*, 30 = *Lambia antarctica*, 31 = *Monostroma hariotii*, 32 = *Urospora penicilliformis*, 33 = *Ulothrix sp.*, 34 = Epiphytic diatoms, 35 = Benthic diatoms, 36 = Phytoplankton, 37 = Aged detritus, 38 = Nereidae, 39 = *Margarella antarctica*, 40 = *Austrodoris kerguelenensis*, 41 = *Eatoniella sp.*, 42 = *Nacella concinna*, 43 = *Laevilacunaria antarctica*, 44 = *Dacrydium sp.*, 45 = *Laternula elliptica*, 46 = *Neobuccinum eatoni*, 47 = *Euphausia superba*, 48 = *Paradexamine sp.*, 49 = *Eurymera monticulosa*, 50 = *Prostebbingia sp.*, 51 = *Gondogeneia antarctica*, 52 = Hyperiid, 53 = *Pariphimedia integricauda*, 54 = *Bovallia gigantea*, 55 = *Cheirimedon femoratus*, 56 = *Gitanopsis squamosa*, 57 = *Prostebbingia gracilis*, 58 = *Waldeckia obesa*, 59 = Hippo-Orcho

(*Hippomedon kergueleni* and *Pseudorchomene plebs* collapsed), 60 = *Oradarea bidentata*, 61 = *Serolis* sp., 62 = *Glyptonotus antarcticus*, 63 = *Plakarthrium punctatissimum*, 64 = *Hemiarthrum setulosum*, 65 = *Ophionotus victoriae*, 66 = *Odontaster validus*, 67 = *Diplasterias brucei*, 68 = *Odontaster meridionalis*, 69 = *Perknaster fuscus antarcticus*, 70 = *Perknaster aurorae*, 71 = *Sterechinus neumayeri*, 72 = Squids, 73 = Copepods, 74 = Ascidians, 75 = *Octopus* sp., 76 = Oligochaetes, 77 = Hydrozoa, 78 = Bryozoa, 79 = Priapulids, 80 = *Parborlasia corrugatus*, 81 = Salpidae, 82 = Mysida, 83 = Fresh detritus, 84 = Necromass, 85 = Zooplankton, 86 = *Haliclonidae*, 87 = Stylo-Myca (*Stylocordyla borealis* and *Mycale acerata* collapsed), 88 = *Rossella* sp., 89 = *Dendrilla antarctica*, 90 = *Urticinopsis antartica*, 91 = *Malacobelemnion daytoni*.

Table 1. Properties of network complexity and structure for Potter Cove FW. S = number of trophic species, L/S = linkage density, C = connectance (L/S^2), T = % top species, I = % intermediate species, B = % basal species, Omn = percentage of omnivorous, TL = mean trophic level, ChPath = characteristic path length, CC = clustering coefficient.

Food web	S	L/S	C	T	I	B	Omn	TL	ChPath	CC
Potter Cove	91	3.4	0.04	19	47	34	45	2.1	1.8	0.08

Mean trophic level (TL) for Potter Cove FW is 2.1, which is supported by the relatively high proportion of basal species that tend to lower the average.

Network topological properties, characteristic path length (ChPath) and clustering coefficient (CC), resulted to be 1.8 and 0.08, respectively.

The degree distribution for Potter Cove FW (Fig. 3) showed that the exponential model fits best the data, according to nonlinear regression and AICc analyses (Table 2). The three species with the highest degree were: *Notothenia coriiceps* (fish, 48 links), *Ophionotus victoriae* (echinoderm, 33 links) and *Gondogeneia Antarctica* (amphipod, 20 links).

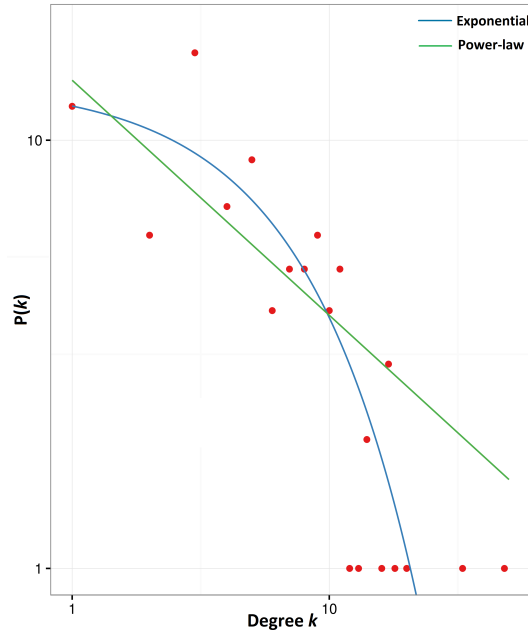


Figure 3. Log-log degree distribution of links $P(k)$ for Potter Cove FW. Two candidate models are shown. Best fit is the exponential model.

Table 2. Model fit of exponential and power-law models for degree distributions of total FW (in- and out-links), competition (only predators) and common-enemy (only prey) overlap graphs. AIC_c and AIC_Δ are the Akaike corrected for small sample size and delta values for each candidate model.

* Indicates best-fit model.

	Model	AIC_c	AIC_Δ
Total FW	Exponential *	94.90	0.000
	Power-law	101.70	6.756
Competition graph	Exponential *	72.56	0.000
	Power-law	76.31	3.751
Common-enemy graph	Exponential *	76.16	0.000
	Power-law	82.00	5.839

The competition graph derived from Potter Cove FW is highly connected. It includes 60 species and 478 indirect interactions (Fig. 4) and shows that several pairs of predators share many prey.

For instance, all trophic species of sponges form a more connected group than with the rest of the

prey species. Furthermore, some species of echinoderms, amphipods and demersal fish are intensively competing for common food sources (see link width and color, Fig. 4).

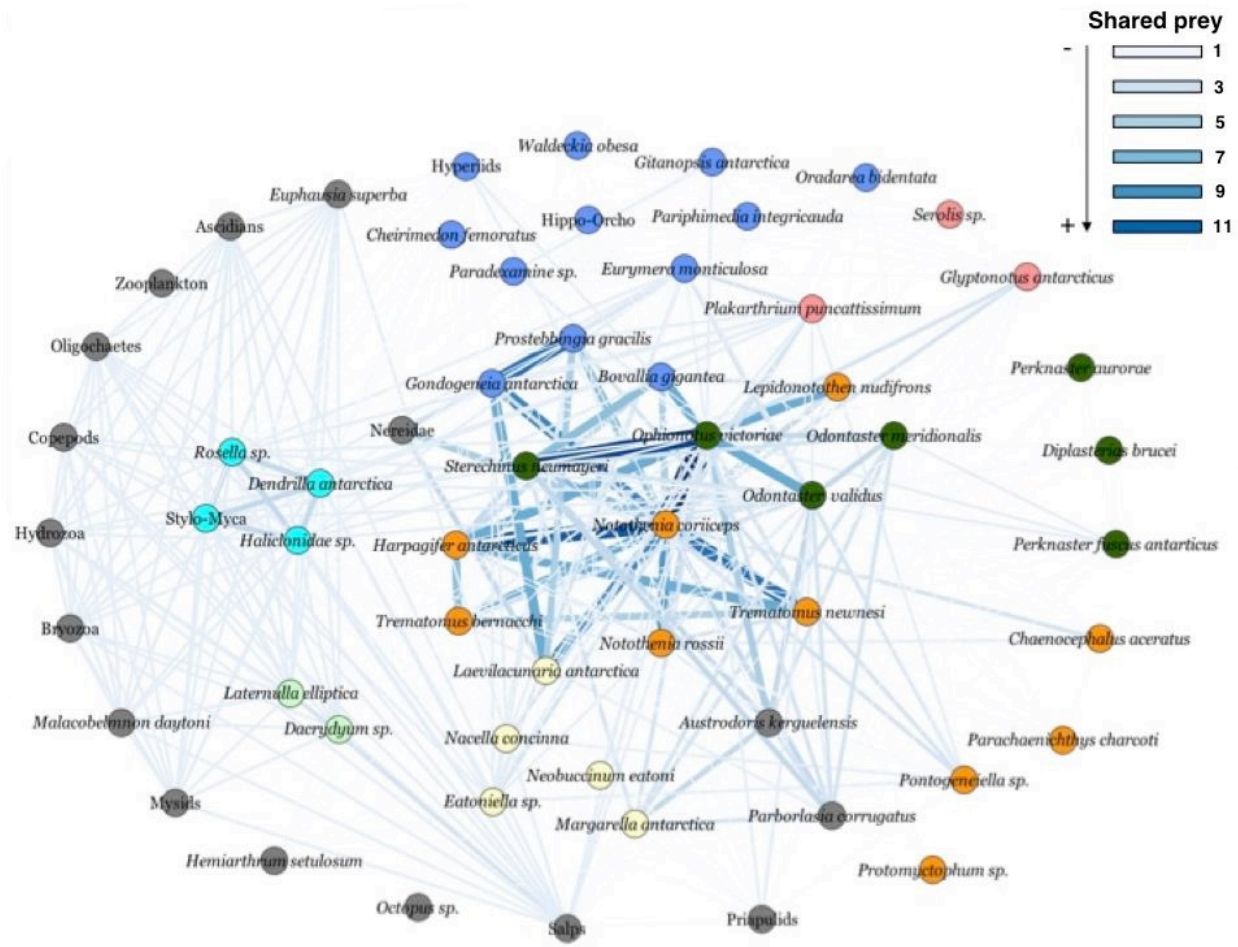
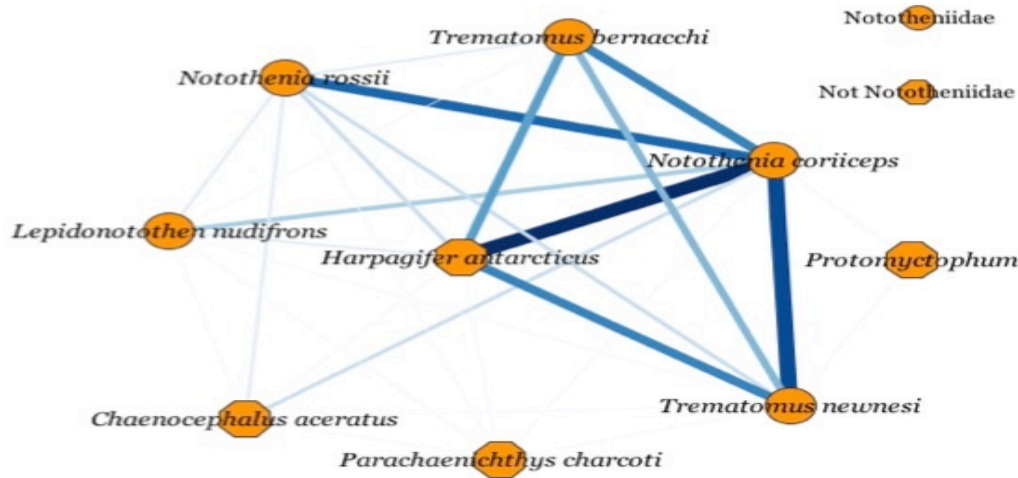


Figure 4. Competition graph for Potter Cove FW. Node colors (as in Fig. 2): functional groups. Link width and colors: number of shared prey.

To study in detail these species interactions, we built specific competition graphs for the latter two functional groups (Fig. 5). Fish overlap graph includes 9 biological species and 28 competitive interactions. It is worthy to note that two species, *Notothenia coriiceps* and *Harpagifer antarcticus*, presented highly overlapped diets. What's more, *Notothenia coriiceps* is competing for many resources with most of the other species (Fig. 5 a). On the other hand,

amphipod overlap graph exhibited low competition among species in general. However, *Gondogeneia antarctica* and *Prostebbingia gracilis* have many common prey (Fig. 5 b).

(a)



(b)

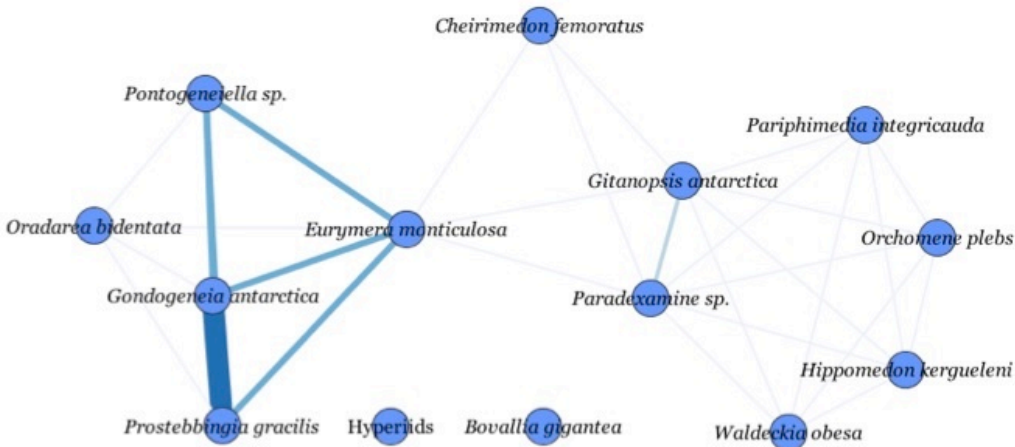


Figure 5. Competition graphs for (a) demersal fish and (b) amphipod functional groups. Link width and colors: number of shared prey (see Fig. 4).

The common-enemy graph shows a hyperconnected structure, where the majority of the species are connected. It contained 74 prey species and 1497 indirect interactions (Fig. 6, up-left). Most of the species are connected due to only one predator in common. In order to elucidate groups of species having stronger indirect interactions, we eliminated links with value 1. This new graph

(Fig. 6, large network) showed groups of species connected by strong interactions: sponges (except for *Dendrilla antarctica*), benthic diatoms – fresh detritus, benthic diatoms – epiphytic diatoms, zooplankton – phytoplankton, some species of amphipods (i.e. *Gondogeneia antarctica* – *Paradexamine* sp. – *Prostebbingia* sp. – *Eurymera meticulosa*), and several red and brown algae (*Gigartina skottsbergii* – *Desmarestia menziesii* – *Iridaea cordata*) (Fig. 6).

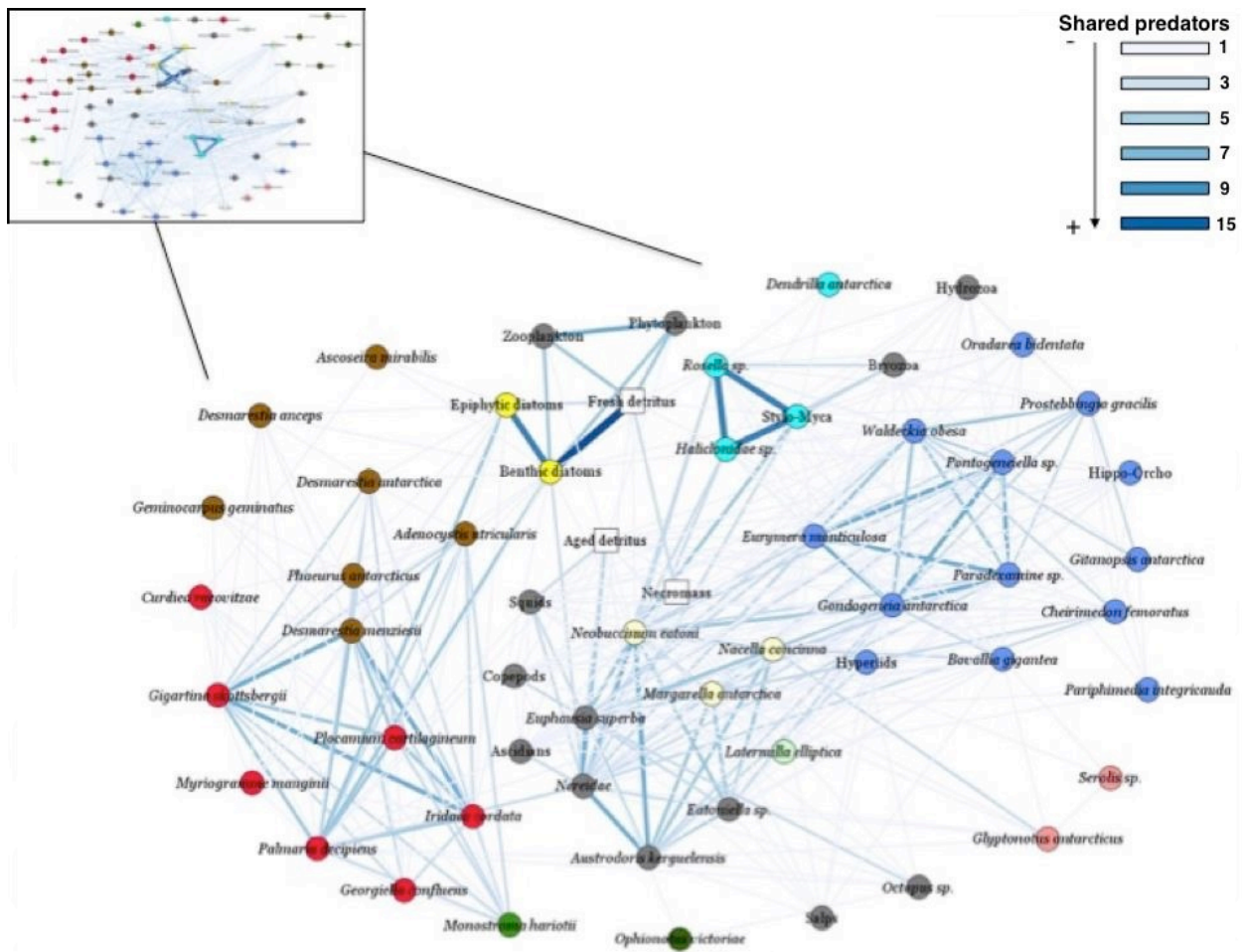


Figure 6. Common-enemy graph for Potter Cove FW. Original graph in left upper corner. Large network shows prey species that share more than one predator. Node colors (as in Fig. 2): functional groups. Link width and colors: number of shared predators.

Degree distribution of links in the competition and common-enemy graphs (Fig. 7) fit the best to an exponential model (Table 2).

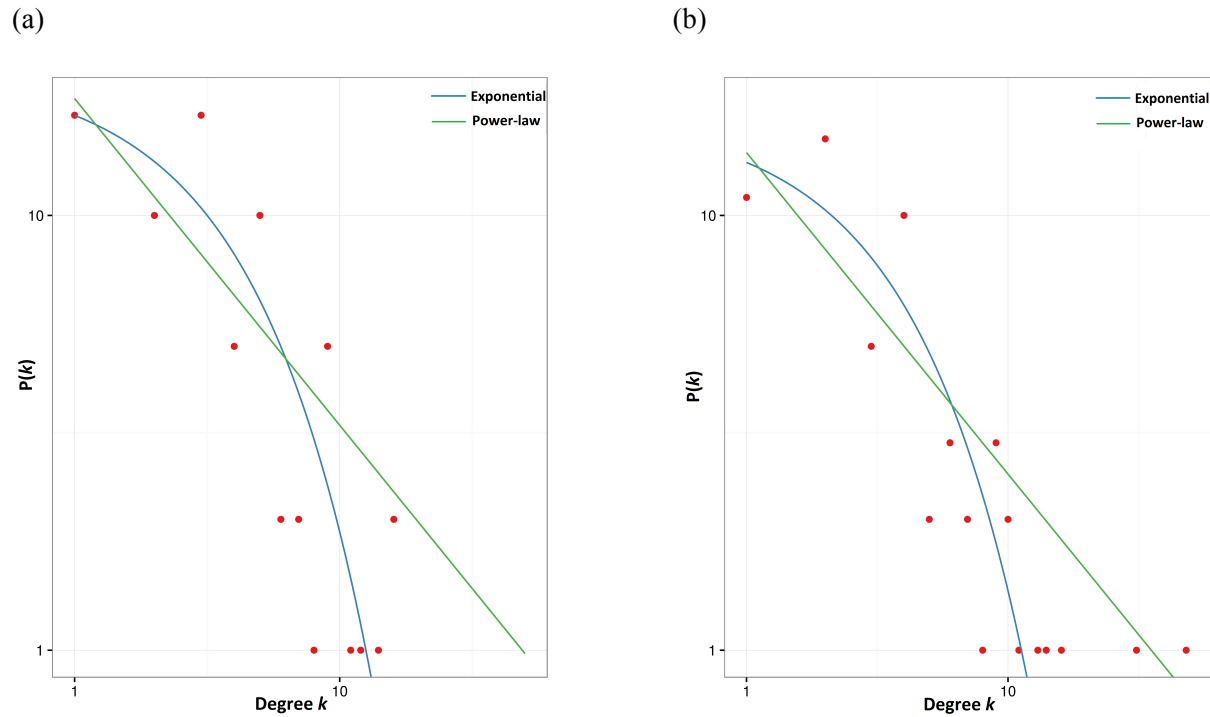


Figure 7. Log-log degree distribution of links $P(k)$ for (a) the competition and (b) common-enemy graphs. Best fit is the exponential model for both distributions.

Comparison between Potter Cove FW and other marine webs showed that linkage density (L/S) and connectance (C) were lower in our web. The proportions of top and basal species are relatively high, whereas the percentage of omnivory was the second lowest among all compared webs. While the characteristic path length in Potter Cove FW was similar to the rest of the FWs, the clustering coefficient was an order of magnitude lower (Table 3).

Table 3. Comparison of network properties between Potter Cove and other marine FWs. S = number of trophic species, L/S = linkage density, C = connectance (L/S^2), T = % top species, I = % intermediate species, B = % basal species, Omn = percentage of omnivorous, TL = mean trophic level, ChPath = characteristic path length, CC = clustering coefficient. NA: not available data.

Food web	<i>S</i>	<i>L/S</i>	<i>C</i>	<i>T</i>	<i>I</i>	<i>B</i>	<i>Omn</i>	<i>TL</i>	<i>ChPath</i>	<i>CC</i>	<i>Source</i>
<i>Marine non-polar webs</i>											
Car. reef (s)	50	11.1	0.22	0	94	6	86	2.9	1.6	0.36	Opitz (1996)
Benguela	29	7.0	0.24	0	93	7	76	3.2	1.6	0.30	Yodzis (1998)
NE US Shelf	79	17.8	0.22	4	94	3	62	3.1	1.6	0.31	Link (2002)
Carib. (I)	249	13.3	0.05	NA	NA	NA	NA	NA	1.9	0.16	Rezende et al. (2009)
Lough Hyne	350	14.7	0.04	NA	NA	NA	NA	NA	NA	NA	Riede et al. 2010
<i>Marine polar webs</i>											
Arctic I	140	6.8	0.05	40	56	14	80.7	2.3	NA	NA	Bodini et al. (2009)
Arctic II	159	8.6	0.05	NA	NA	NA	52	2.7	2.3	0.25	Kortsch et al. 2015
Antarctic	586	6.8	0.01	23	21	56	41.1	2.2	3.0	0.14	de Santana et al. (2013)
Weddell Sea	491	33.2	0.07	6.5	80	13.5	67	2.5	NA	NA	Jacob (2005)
Potter Cove	91	3.4	0.04	19	47	34	45	2.1	1.8	0.08	This study

Discussion

Food web complexity and structure

Potter Cove FW properties of complexity and structure showed several singularities that make the web unique in terms of species-richness, link configuration and topological characteristics. Network complexity is mainly addressed with linkage density (L/S) and connectance (C), properties found to be relatively low in Potter Cove web: $L/S=3.4$ and $C=0.04$. Nevertheless, direct comparisons of linkage density and connectance values suggest that marine FWs tend to look similar to each other, and that they are fundamentally different from other kinds of FWs, based on their high value (Dunne et al. 2004). In opposition to the hypothesis of marine FW

similarity, de Santana et al. (2013) found that connectance in the Arctic marine FW was 5 times larger than that of the Antarctic one (0.05 versus 0.01). Furthermore, within marine webs, polar networks tend to display low values of linkage density (de Santana et al. 2013). In this sense, complexity exhibited in Potter Cove FW lays closer to what has been suggested for Polar regions.

Could low values of linkage density and connectance in Potter Cove network be a consequence of methodological issues? Dunne et al. (2002b) suggested that both low- and high-connectance FWs are unusual, and that extreme connectances may sometimes be artifacts of assembly procedures. They exemplified this point by showing that the lowest connectance webs they studied ($C \approx 0.03$, Grassland and Scotch Broom), which is similar to Potter Cove FW connectance value, are “source-webs” constructed by following food chains upward from one or a few basal species. Potter Cove FW, a species-rich ecological network is not a source-web, since it was not constructed upward from one or two basal species; what’s more it is characterized by > 30% basal species. Therefore, low values of linkage density and connectance were not a consequence of the assembly procedure of the network, which implies that the assembly-connectance relationship in FWs is not as strong as previously thought.

Whether ecological networks display low or high L/S and C values is crucial to gain insight into ecosystem’s synthetic properties like robustness. Empirical analyses of FWs support the notion that the robustness of a FW increases with its linkage density and connectance (De Angelis 1975, Dunne et al. 2002a, Montoya & Solé 2003). Low values found in Potter Cove FW, combined with ongoing climate change effects on benthic communities in the area (Pasotti et al. 2015b, Sahade et al. 2015), suggest potential ecosystem fragility that needs to be addressed.

Furthermore, direct comparison of common FW properties, like percentages of top, intermediate and basal species, indicates that Potter Cove network has strong structural differences and shows unique features compared to other marine ecosystems. Principal dissimilarities were found in top and basal species numbers; Potter Cove FW shows a higher number of these trophic species. After comparing 19 FW properties, Dunne et al. (2004) concluded that the excessively low percentage of basal taxa in marine FWs compared to other systems is clearly an artifact of poor resolution of primary producers and consumer links to them. One of the methodological strengths of Potter Cove FW is the exceptional taxonomic resolution of basal nodes. A good taxonomic resolution of the lower trophic levels, such as the macroalgal community, would be essential to understand Potter Cove ecosystem functioning, since there seems to be a species-specific selective consumption (Barrera-Oro and Casaux 1990, Iken et al. 1997, Iken et al. 1998) and species show a marked pattern of depth distribution and tridimensional structure (Quartino et al. 2005, Huang et al. 2007). Macroalgae are one of the main energy sources for Potter Cove, and probably support a large fraction of secondary production of the benthos community (Quartino et al. 2008). In this sense, it was proposed that the macroalgal contribution to the Antarctic food webs is likely to be mainly through the detrital pathway, as dominant species were shown to be chemically defended and unpalatable to sympatric grazers (Amsler et al. 2005, Peters et al. 2005). Implications in ecosystem functioning and stability are only possible to elucidate in FWs where species involved in energy and matter transfer processes are well represented. Proportions of intermediate species (*I*) and omnivory (*Omn*) in Potter Cove FW are relatively low when compared to other marine webs, but close to values for Antarctic FW shown in de Santana et al. (2013). Levels of *I* and omnivory are usually correlated in FW studies, as the majority of species acting as predators and prey also feed on more than one trophic level

(omnivorous). The importance of omnivory for the structure and dynamics of FWs is a long-standing controversy in ecology (Burns 1989, Polis 1991), and whether omnivory stabilizes or destabilizes webs is not clear (Vandermeer 2006, Namba et al. 2008, Johnson et al. 2014). In Antarctica a recent study suggests that omnivory is a beneficial trait as it allows for more responsive and flexible utilization of food sources that may be temporally and spatially constrained and unpredictable (Norkko et al. 2007). Our results of omnivory, the second lowest percentage among marine webs compared in this study, would suggest low stability for Potter Cove FW. Additionally, this result generates testable hypotheses about the probable stabilizing role of omnivory in large communities, since it was proven that the risk of secondary extinctions after primary loss of species depends on the trophic position of the extinct species (Borrvall et al. 2000) and the diversity of that trophic level (insurance hypothesis, Yachi & Loreau 1999). The mean trophic level for this FW (2.1) is also relatively low, which is the result of several singularities of the Potter Cove ecological network. Firstly, as already mentioned, the number of basal trophic species is high, exceeding 30% of number of species (diversity). What's more, the maximum trophic level is 4.27, lower than most other FWs studied (Dunne et al. 2002b, Dunne et al. 2004), which implies that top and basal species are separated by few intermediate taxa (it is worthy to clarify here that Antarctic top predators, e.g. marine mammals, might increase maximum trophic level of the web but were not included as they are rarely reported in the Cove). Therefore, the number of transfers of energy or nutrients from the base to the top of Potter Cove FW is small, so that the number of times chemical energy is transformed from a consumer's diet into a consumer's biomass along the FW is also small. Another reason why mean trophic level is low is the fact that most predators at intermediate levels (e.g. amphipods, isopods, bivalves, *Nothotenia coriiceps*) feed predominantly on algae species and/or detritus, which in Potter Cove

is mainly the product of dead and decomposed macroalgae (Iken et al. 1998, Quartino et al. 2008). The macroalgal detritus decomposes and is eaten by detritivores and suspensivores (e.g. sponges, ascidians, bryozoans, cnidarians), supporting an important amount of the secondary production (Tatián et al. 2004). The obtained low mean trophic level for Potter Cove FW clearly shows that what species-specific and/or community studies have suggested. These characteristics of ecological communities have a high impact on ecosystem functioning, such as nutrient and carbon cycling, and trophic cascades (Post 2002).

Short characteristic path length for Potter Cove FW (\approx two degrees of separation) is similar to lengths found in other marine FWs. Length between pairs of species within marine webs is low (\approx 1.6 links) compared to other types of FWs, with values ranging from 1.3 to 3.7 (Dunne et al. 2002b). This suggests that most species in Potter Cove FW are potential very close neighbors, and that negative effects can spread rapidly and widely throughout the web (Dunne et al. 2002a). Additionally, the clustering coefficient in this web (0.08) resulted to be an order of magnitude lower than what has been reported for other marine FWs (Link 2002, Dunne et al. 2004). A low coefficient indicates that most species are similarly connected to each other, i.e. there are no densely sub-groups of species interacting with one other. Particularly, the clustering coefficient result of Potter Cove FW might be the consequence of hubs (i.e. species with high degree, > 20 links) connected with most of the species across the web and not with a specific group of species. The most connected species, *Nothotenia coriiceps* (demersal fish) and *Ophionotus victoriae* (brittle star), have the widest ecological niches in our study, being generalists and omnivores. By feeding across several trophic levels and transversely in the FW, these species have a strong effect on clustering. Specifically, *Nothotenia coriiceps* represents a keystone species in the benthic-pelagic coupling process promoting the transfer of matter and energy between habitats

(Barrera-Oro & Casaux 2008). At the same time, these hub species might be essential for understanding the spread of perturbations (i.e. biodiversity loss) through the entire FW network.

Degree distribution and overlap graphs: implications for ecosystem functioning

Webs with low connectance ($C \approx 0.03$), like Potter Cove FW, are more likely to display power law degree distributions (Dunnet et al. 2002a, Montoya & Solé 2002), consistent with the small-world phenomenon: webs combining high clustering, like regular lattices and short path length, like random graphs (Watts & Strogatz 1998). According to these findings, the Potter Cove FW, with a low estimated connectance ($C = 0.04$), should display a power law degree distribution. However, it fits best to an exponential distribution following what the low clustering coefficient of the web would suggest. The existence of a universal functional form in the degree distribution of FWs is still on debate, though Stouffer et al. (2005) have shown that approximately exponential degree distributions can be derived from two different models: nested-hierarchy and generalized cascade.

The influence of the degree distribution on the vulnerability of complex networks against random failures and intentional attacks has become well known since the work of Albert et al. (2000). Considering this relationship between degree distribution and vulnerability, Potter Cove FW would be highly fragile to the removal of the most connected species, but not as much as in power law networks (Albert et al. 2000, Dunne et al. 2002a, Estrada 2007). Furthermore, de Santana et al. (2013) suggested that less connected communities should be more sensitive to the loss of basal species than complex communities because the consumers in simple communities are dependent on only a few species and cannot survive their loss. Nevertheless, we hypothesize

that although Potter Cove FW shows low connectance, it will be robust against basal node extinctions due to the high percentage of these trophic species.

Otherwise, degree distribution of links in the competition graph showed that most species have limited diets, feeding exclusively on few prey, whereas few species feed on a large amount of food-sources, usually being generalists. The graph suggests that several predator species strongly interact and might compete for common prey; this is the case for sponges, demersal fish and amphipods. We focused the analysis on fish and amphipods as it has been proven that they play an important role on the Antarctic marine ecosystem (Barrera-Oro & Casaux 1998, Momo et al. 1998, Barrera-Oro 2002, Amsler et al. 2014). Fish data reflects that there is dietary overlap between *Notothenia coriiceps* and *Harpagifer antarcticus* on the one hand and between *Trematomus newnesi* and *Notothenia rossii* on the other hand. Most of the dietary comparisons for demersal Antarctic fish communities have dealt with food overlap between fish species pairs (Barrera-Oro 2003). Dietary overlap index (“S” index of Linton et al. 1981) between *N. coriiceps* and *N. rossii* in Potter Cove as estimated by Barrera-Oro (2003) is 55%, meaning that these species compete for more than half of their food-sources. The same study estimated the index for *N. coriiceps* – *T. newnesi*, being 18%, and *N. coriiceps* – *H. antarcticus*, being 19%. Barrera-Oro (2003) concludes that there is no evidence of food competition among the shallow cold-water fish communities in Potter Cove. Nevertheless, our results show that *N. coriiceps* and *H. antarcticus* have many prey in common, with high overlapping. However, due to the great difference in adult size between these two species (total length: 45 and 13 cm respectively), competition is probably low (Casaux 1998, Barrera-Oro 2003). Although the first one is a generalist and the latter a specialist, both species can be grouped in the same feeding category given that they are benthos feeders, eating amphipods (e.g. *Gondogeneia antarctica*,

Paradexamine sp., *Prostebbingia sp.*, *Eurymera monticulosa*), gastropods (e.g. *Margarella antarctica*, *Nacella concinna*, *Eatoniella sp.*, *Neobuccinum eatoni*), polychaetes (e.g. Nereidae), and krill in summer (*Euphausia superba*).

On the other hand, competition graph for amphipods exhibited low dietary overlap among species. It is worthy to notice that hyperiids and *Bovallia gigantea* are not connected, which indicates that they do not share food sources with any other amphipods, neither between them. Hyperiids and *B. gigantea* are both carnivores, though the latter mainly feeds on other species of amphipods, such as *E. monticulosa*, *Prostebbingia sp.* and *G. antarctica* (Richard 1977). On the contrary, hyperiids principally eat planktonic prey, such as copepods (Pakhomov & Perissinotto 1996). The most important result of the overlap graph is that species are separated in agreement with their feeding strategies: herbivores (*P. gracilis*, *G. antarctica*, *O. bidentata* and *Prostebbingia sp.* – left of the graph), detritivores (*C. femoratus* and *Paradexamine sp.* – middle graph), and scavengers (*W. obesa*, *H. kergueleni*, *O. plebs* and *P. integricauda* – right of the graph). This demonstrates the importance and utility of the analysis of competition graphs, in order to better understand alternative energy pathways within apparent trophic guilds; analysis that would be improved by adding information on each predator species (e.g. body size and mass, niche specialization).

Common-enemy graph derived from Potter Cove FW showed a hyper-connected graph, which implies that most prey species share at least one predator. The fact that the prey overlap graph of this FW exhibited high connectivity and exponential distribution has implications for the functioning of the ecosystem. High-connected prey in Potter Cove FW are: phytoplankton – zooplankton, benthic diatoms – epiphytic diatoms, and fresh detritus – benthic diatoms. The latter shows that several sources of food and alternative energy pathways exist in Potter Cove

ecosystem: phytoplankton (Ahn et al. 1993), benthic microalgal production (Dayton et al. 1986, Gilbert 1991), and horizontal advection of allochthonous food particles (Dunbar et al. 1989); important sources of organic matter for marine organisms living in coastal antarctic ecosystems.

Conclusions

Here we present the highest resolved, more speciose Antarctic FW that has been assembled so far. It is moreover the first ecological network built for the South Shetland Islands. We constructed and thoroughly studied Potter Cove FW and concluded that several singularities make it unique in terms of species-richness, structure and topological properties.

Comparison of FW properties revealed a particular combination of characteristics for Potter Cove ecological network: middle size ($S \approx 100$) compared to other marine FWs, low linkage density and connectance (not being an artifact of resolution or assembly procedure), low %-Omnivory, short path length and low clustering coefficient.

According to the overlap graphs and their degree distributions, and the consistency with field observations and investigations, we suggest these analyses are useful tools to gain insight into ecosystem functioning. What is more interesting, common-enemy graph showed the existence of alternative energy pathways consistent with field investigations in the Cove. As also suggested for East Antarctica FW (Gillies et al. 2012), carbon flow among the benthic fauna in Potter Cove is complex, with multiple sources of carbon being utilized, which can be asserted given the good basal resolution of our network.

From a network perspective, Potter Cove FW properties suggest fragility and potential trophic cascade effects although multiple energy pathways might add robustness to the web. Our results suggest that species with a high number of links (e.g. *Notothenia corriceps*, *Ophionotus*

victoriae, *Gondogeneia antarctica*) could be considered keystones for the robustness of Potter Cove ecosystem.

Acknowledgments

This research was supported by Consejo Nacional de Investigaciones Científicas y Técnicas (CONICET), Universidad Nacional de General Sarmiento and Alfred Wegener Institute (Germany). The work was partially funded by PIO 14420140100035CO CONICET Argentina and conducted in the frames of the EU research network IMCONet funded by the Marie Curie Action IRSES (FP7 IRSES, Action No. 319718).

Literature Cited

- Ahn, I. Y., Kang, J. S., Kang, J. S., 1993. Primary food sources for shallow-water benthic fauna in Marian Cove, King George Island during an Austral Summer. *Kor. J. Polar Res.* 4, 67–72.
- Albert, R., & Barabási, A. L. 2002. Statistical mechanics of complex networks. *Reviews of modern physics*, 74(1), 47.
- Albert, R., Jeong, H., & Barabási, A. L. 2000. Error and attack tolerance of complex networks. *Nature*, 406(6794), 378-382.
- Amsler, C. D., McClintock, J. B., & Baker, B. J. 2014. Chemical mediation of mutualistic interactions between macroalgae and mesograzers structure unique coastal communities along the western Antarctic Peninsula. *Journal of phycology*, 50(1), 1-10.
- Barrera-Oro, E. 2002. The role of fish in the Antarctic marine food web: differences between inshore and offshore waters in the southern Scotia Arc and west Antarctic Peninsula. *Antarctic Science*, 14(04), 293-309.

- Barrera-Oro, E. 2003. Analysis of dietary overlap in Antarctic fish (Notothenioidei) from the South Shetland Islands: no evidence of food competition. *Polar Biology*, 26(10), 631-637.
- Barrera Oro, E. R., and R. J. Casaux. 1990. Feeding selectivity in *Notothenia neglecta*, Nybelin, from Potter Cove, South Shetland Islands, Antarctica. *Antarctic Science* 2:207-273.
- Barrera-Oro, E. R., & Casaux, R. J. 1998. Ecology of demersal fish species from Potter Cove. *Berichte zur Polarforschung*, 299, 156-167.
- Barrera-Oro, E. R., & Casaux, R. 2008. General ecology of coastal fish from the South Shetland Island and west Antarctic Peninsula areas. *Ber Polar Meeresforsch*, 571, 95-110.
- Bascompte, J. 2009. Disentangling the web of life. *Science*, 325(5939), 416.
- Bodini, A., Bellingeri, M., Allesina, S., & Bondavalli, C. 2009. Using food web dominator trees to catch secondary extinctions in action. *Philosophical Transactions of the Royal Society of London B: Biological Sciences*, 364(1524), 1725-1731.
- Borrvall, C., Ebenman, B., Jonsson, T., & Jonsson, T. 2000. Biodiversity lessens the risk of cascading extinction in model food webs. *Ecology Letters*, 3(2), 131-136.
- Brandes, U., & Wagner, D. 2004. Analysis and visualization of social networks. In *Graph drawing software* (pp. 321-340). Springer Berlin Heidelberg.
- Brose, U., & Dunne, J. A. 2009. Modelling the dynamics of complex food webs. *Community ecology: Processes, models, and applications*. Oxford University Press: Oxford.
- Burnham, K. P., & Anderson, D. R. 2002. Information and likelihood theory: a basis for model selection and inference. *Model selection and multimodel inference: a practical information-theoretic approach*, 2, 49-97.
- Burns, T. P. 1989. Lindeman's contradiction and the trophic structure of ecosystems. *Ecology*, 1355-1362.

Casaux, R. 1998. The contrasting diet of *Harpagifer antarcticus* (Notothenioidei, Harpagiferidae) at two localities of the South Shetland Islands, Antarctica. *Polar Biology*, 19(4), 283-285.

Dayton, P. K., Watson, D., Palmisano, A., Barry, J. P., Oliver, J. S., & Rivera, D. 1986. Distribution patterns of benthic microalgal standing stock at McMurdo Sound, Antarctica. *Polar Biology*, 6(4), 207-213.

De Angelis, D. L. 1975. Stability and connectance in food web models. *Ecology*, 238-243.

de Santana, C. N., Rozenfeld, A. F., Marquet, P. A., & Duarte, C. M. 2013. Topological properties of polar food webs. *Mar Ecol Prog Ser*, 474, 15-26.

Deregibus, D., Quartino, M. L., Campana, G. L., Momo, F. R., Wiencke, C., & Zacher, K. 2016. Photosynthetic light requirements and vertical distribution of macroalgae in newly ice-free areas in Potter Cove, South Shetland Islands, Antarctica. *Polar Biology*, 39(1), 153-166.

Dunbar, R. B., Leventer, A. R., & Stockton, W. L. 1989. Biogenic sedimentation in McMurdo Sound, Antarctica. *Marine Geology*, 85(2-4), 155-179.

Dunne, J. A., Williams, R. J., & Martinez, N. D. 2002a. Network structure and biodiversity loss in food webs: robustness increases with connectance. *Ecology letters*, 5(4), 558-567.

Dunne, J. A., Williams, R. J., & Martinez, N. D. 2002b. Food-web structure and network theory: the role of connectance and size. *Proceedings of the National Academy of Sciences*, 99(20), 12917-12922.

Dunne, J. A., Williams, R. J., & Martinez, N. D. 2004. Network structure and robustness of marine food webs. *Marine Ecology Progress Series*, 273, 291-302.

Estrada, E. 2007. Food webs robustness to biodiversity loss: The roles of connectance, expansibility and degree distribution. *Journal of theoretical biology*, 244(2), 296-307.

- Gilbert, N. S. 1991. Microphytobenthic seasonality in near-shore marine sediments at Signy Island, South Orkney Islands, Antarctica. *Estuarine, Coastal and Shelf Science*, 33(1), 89-104.
- Gillies, C. L., Stark, J. S., Johnstone, G. J., & Smith, S. D. 2012. Carbon flow and trophic structure of an Antarctic coastal benthic community as determined by $\delta^{13}\text{C}$ and $\delta^{15}\text{N}$. *Estuarine, Coastal and Shelf Science*, 97, 44-57.
- Huang, Y., M. Amsler, J. McClintock, C. Amsler, and B. Baker. 2007. Patterns of gammaridean amphipod abundance and species composition associated with dominant subtidal macroalgae from the western Antarctic Peninsula. *Polar Biology* 30:1417-1430.
- Iken, K., E. R. Barrera Oro, M. L. Quartino, R. J. Casaux, and T. Brey. 1997. Grazing by the Antarctic fish *Notothenia coriiceps*: evidence for selective feeding on macroalgae. *Antarctic Science*, 9:386-391.
- Iken, K., M. L. Quartino, E. BarreraOro , J. Palermo, C. Wiencke, and T. Brey. 1998. Trophic relations between macroalgae and herbivores. *Reports on Polar Research (= Berichte zur Polarforschung)*, 299:258-262.
- Jacob, U. 2005. Trophic Dynamics of Antarctic Shelf Ecosystems—Food Webs and Energy Flow Budgets. University of Bremen, Germany, PhD Thesis, 125 pp.
- Jacob, U., Brey, T., Fetzer, I., Kaehler, S., Mintenbeck, K., Dunton, K., ... & Arntz, W. E. 2006. Towards the trophic structure of the Bouvet Island marine ecosystem. *Polar Biology*, 29(2), 106-113.
- Johnson, S., Domínguez-García, V., Donetti, L., & Muñoz, M. A. 2014. Trophic coherence determines food-web stability. *Proceedings of the National Academy of Sciences*, 111(50), 17923-17928.

- Kortsch, S., Primicerio, R., Fossheim, M., Dolgov, A. V., & Aschan, M. 2015. Climate change alters the structure of arctic marine food webs due to poleward shifts of boreal generalists. In *Proc. R. Soc. B* (Vol. 282, No. 1814, p. 20151546). The Royal Society.
- Leventer, A.R., & Dunbar, R.B. 1985. Suspended particulate matter in Antarctic coastal waters. *Antarc. J. U.S.* 20(5), 100-103.
- Link, J. S. 2002. Does food web theory work for marine ecosystems? *Marine ecology progress series*.
- Link, J. S., Stockhausen, W. T., & Methratta, E. T. 2005. Food-web theory in marine ecosystems. *Aquatic food webs: an ecosystem approach*. Oxford University Press, Oxford, 98-114.
- Linton, L. R., Davies, R. W., & Wrona, F. J. 1981. Resource utilization indices: an assessment. *The Journal of Animal Ecology*, 283-292.
- Momo, F., Bogazzi, E. & Duttweiler, F. 1998. Amphipods of Potter Cove: community composition, biology and growth. *Berichte zur Polforschung*, 299, 144-149.
- Montoya, J. M., & Solé, R. V. 2002. Small world patterns in food webs. *Journal of theoretical biology*, 214(3), 405-412.
- Montoya, J. M., & Solé, R. V. 2003. Topological properties of food webs: from real data to community assembly models. *Oikos*, 102(3), 614-622.
- Namba, T., Tanabe, K., & Maeda, N. 2008. Omnivory and stability of food webs. *Ecological Complexity*, 5(2), 73-85.
- Norkko, A., Thrush, S. F., Cummings, V. J., Gibbs, M. M., Andrew, N. L., Norkko, J., & Schwarz, A. M. 2007. Trophic structure of coastal Antarctic food webs associated with changes in sea ice and food supply. *Ecology*, 88(11), 2810-2820.

- Opitz, S. 1996. Trophic interactions in Caribbean coral reefs (Vol. 1085). WorldFish.
- Pakhomov, E. A., & Perissinotto, R. 1996. Trophodynamics of the hyperiid amphipod *Themisto gaudichaudi* in the South Georgia region during late austral summer. *Marine ecology progress series*. Oldendorf, 134(1), 91-100.
- Pasotti, F., Manini, E., Giovannelli, D., Wölfl, A. C., Monien, D., Verleyen, E., ... & Vanreusel, A. 2015a. Antarctic shallow water benthos in an area of recent rapid glacier retreat. *Marine Ecology*, 36(3), 716-733.
- Pasotti, F., Saravia, L. A., De Troch, M., Tarantelli, M. S., Sahade, R., & Vanreusel, A. 2015b. Benthic Trophic Interactions in an Antarctic Shallow Water Ecosystem Affected by Recent Glacier Retreat. *PloS one*, 10(11), e0141742.
- Petchey, O. L., Brose, U., & Rall, B. C. 2010. Predicting the effects of temperature on food web connectance. *Philosophical Transactions of the Royal Society of London B: Biological Sciences*, 365(1549), 2081-2091.
- Pimm, S. L., Lawton, J. H., & Cohen, J. E. 1991. Food web patterns and their consequences. *Nature*, 350(6320), 669-674.
- Polis, G. A. 1991. Complex trophic interactions in deserts: an empirical critique of food-web theory. *American naturalist*, 123-155.
- Post, D. M. 2002. The long and short of food-chain length. *Trends in Ecology & Evolution*, 17(6), 269-277.
- Quartino, M. L., H. Zaixso, and A. Boraso de Zaixso. 2005. Biological and environmental characterization of marine macroalgal assemblages in Potter Cove, South Shetland Islands, Antarctica. *Botanica Marina*, 48:187-197.

Quartino, M. L., de Zaixso, A. B., & Momo, F. R. 2008. Macroalgal production and the energy cycle of Potter Cove. *Berichte zur Polforschung*, 571, 68-74.

Quartino, M. L., Deregibus, D., Campana, G. L., Latorre, G. E. J., & Momo, F. R. 2013. Evidence of macroalgal colonization on newly ice-free areas following glacial retreat in Potter Cove (South Shetland Islands), Antarctica. *PLoS One*, 8(3), e58223.

R Core Team 2016. R: A language and environment for statistical computing. R Foundation for Statistical Computing, Vienna, Austria. ISBN 3-900051-07-0, URL <http://www.R-project.org>.

Raffaelli, D. 2000. Trends in research on shallow water food webs. *Journal of Experimental Marine Biology and Ecology*, 250(1), 223-232.

Rezende, E. L., Albert, E. M., Fortuna, M. A., & Bascompte, J. 2009. Compartments in a marine food web associated with phylogeny, body mass, and habitat structure. *Ecology Letters*, 12(8), 779-788.

Richard, M. G. 1977. The ecology (including physiological aspects) of selected Antarctic marine invertebrates associated with inshore macrophytes (Doctoral dissertation, Durham University).

Riede, J. O., Rall, B. C., Banasek-Richter, C., Navarrete, S. A., Wieters, E. A., Emmerson, M. C., ... & Brose, U. 2010. Scaling of food-web properties with diversity and complexity across ecosystems. *Advances In Ecological Research*, 42, 139-170.

Roese, M., & Drabble, M. 1998. Wind driven circulation in Potter Cove. In *The Potter Cove Coastal Ecosystem, Antarctica*. Reports on Polar Research 299, pp. 40–46.

Sahade, R., Lager, C., Torre, L., Momo, F., Monien, P., Schloss, I., ... & Zamboni, N. 2015. Climate change and glacier retreat drive shifts in an Antarctic benthic ecosystem. *Science advances*, 1(10), e1500050.

Schloss, I. R., Abele, D., Moreau, S., Demers, S., Bers, A. V., González, O., & Ferreyra, G. A. 2012. Response of phytoplankton dynamics to 19-year (1991–2009) climate trends in Potter Cove (Antarctica). *Journal of Marine systems*, 92(1), 53-66.

Schloss, I. R., Ferreyra, G. A., Mercuri, G., & Kowalke, J. 1999. Particle flux in an Antarctic shallow coastal environment: a sediment trap study. *Scientia Marina*, 63(S1), 99-111.

Stouffer, D. B., Camacho, J., Guimera, R., Ng, C. A., & Nunes Amaral, L. A. 2005. Quantitative patterns in the structure of model and empirical food webs. *Ecology*, 86(5), 1301-1311.

Tatián, M., Sahade, R., & Esnal, G. B. 2004. Diet components in the food of Antarctic ascidians living at low levels of primary production. *Antarctic Science*, 16(02), 123-128.

Vandermeer, J. 2006. Omnivory and the stability of food webs. *Journal of Theoretical Biology*, 238(3), 497-504.

Varela, L. 1998. Hydrology of Matías and Potter Creeks. In *The Potter Cove Coastal Ecosystem, Antarctica*. Ber. Polarforsch. Karl Kamloth, Bremen, 299, 33– 39.

Walther, G. R. 2010. Community and ecosystem responses to recent climate change. *Philosophical Transactions of the Royal Society B: Biological Sciences*, 365(1549), 2019-2024.

Watts, D. J., & Strogatz, S. H. 1998. Collective dynamics of ‘small-world’ networks. *Nature*, 393(6684), 440-442.

Wiencke, C., Ferreyra, G., Arntz, W., & Rinaldi, C. 1998. The Potter Cove Coastal Ecosystem, Antarctica. Report of Polar Research. *Berichte zur Polarforschung*, 299.

Wiencke, C., Ferreyra, G. A., Abele, D., & Marensi, S. 2008. The Antarctic ecosystem of Potter cove, King-George Island (Isla 25 de Mayo): Synopsis of research performed 1999-2006 at the Dallmann Laboratory and Jubany Station. *Berichte zur Polar-und Meeresforschung (Reports on Polar and Marine Research)*, 571.

- Williams, R. J., & Martinez, N. D. 2004. Limits to trophic levels and omnivory in complex food webs: theory and data. *The American Naturalist*, 163(3), 458-468.
- Wirta, H.K., Vesterinen, E.J., Hambäck, P.A., Weingartner, E., Rasmussen, C., Reneerkens, J., Schmidt, N.M., Gilg, O. & Roslin, T. 2015. Exposing the structure of an Arctic food web. *Ecology and Evolution*, 5 (17), 3842-3856.
- Woodward, G., Benstead, J. P., Beveridge, O. S., Blanchard, J., Brey, T., Brown, L. E., ... & Jennings, S. 2010. Ecological networks in a changing climate. *Advances in Ecological Research*, 42, 71-138.
- Woodward, G., Thompson, R., Townsend, C. R., & Hildrew, A. G. 2005. Pattern and process in food webs: evidence from running waters. *Aquatic food webs: An ecosystem approach*, 51-66.
- Xiao, X., White, E. P., Hooten, M. B., & Durham, S. L. 2011. On the use of log-transformation vs. nonlinear regression for analyzing biological power laws. *Ecology*, 92(10), 1887-1894.
- Yachi, S., & Loreau, M. 1999. Biodiversity and ecosystem productivity in a fluctuating environment: the insurance hypothesis. *Proceedings of the National Academy of Sciences*, 96(4), 1463-1468.
- Yodzis, P. 1998. Local trophodynamics and the interaction of marine mammals and fisheries in the Benguela ecosystem. *Journal of Animal Ecology*, 67(4), 635-658.