



U.S. Department of the Interior
Bureau of Land Management

Color Country District Office

Utah Resource Advisory Council May 17-18, 2023





Agenda

- Color Country District Office Overview
- Color Country District Highlights
- Fire and Fuels
- Color Country GAOA, BIL, and IRA Projects
- CCFO Business Plan
- Richfield Field Office
- St. George Field Office
- Cedar City Field Office
- May 18 Field Tour





Color Country District Office Overview

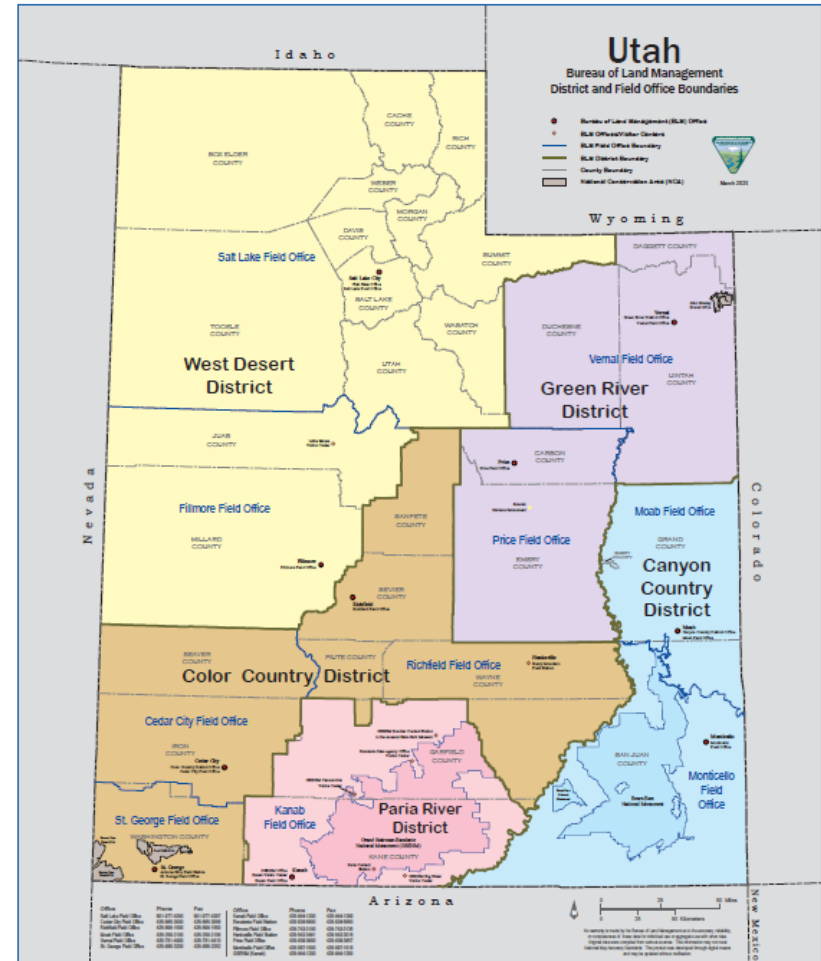
Color Country District Office Field Offices

- Richfield Field Office (RFO)
- Cedar City Field Office (CCFO)
- St. George Field Office (SGFO)

Shared services with Paria River District

- Fire and fuels
- Law enforcement
- Some support services

Largest landscape restoration programs in the United States, proactively treating approximately 40,000 acres of public land annually.





Color Country District Office Highlights

- Utah Watershed Restoration Initiative: leads the nation in DOI funding for habitat restoration projects
- BLM's Rural Fire Readiness Program: Color Country and Paria River Fire Management transferred one Type 4 engine to Parowan Fire Department
- Youth programs: K-12 programs (including career fairs), college internship programs (ACE and IIC)
- Community stewardship: Trail development and maintenance, R&PP projects, clean-up efforts, National Historic Trails, partnerships with local organizations





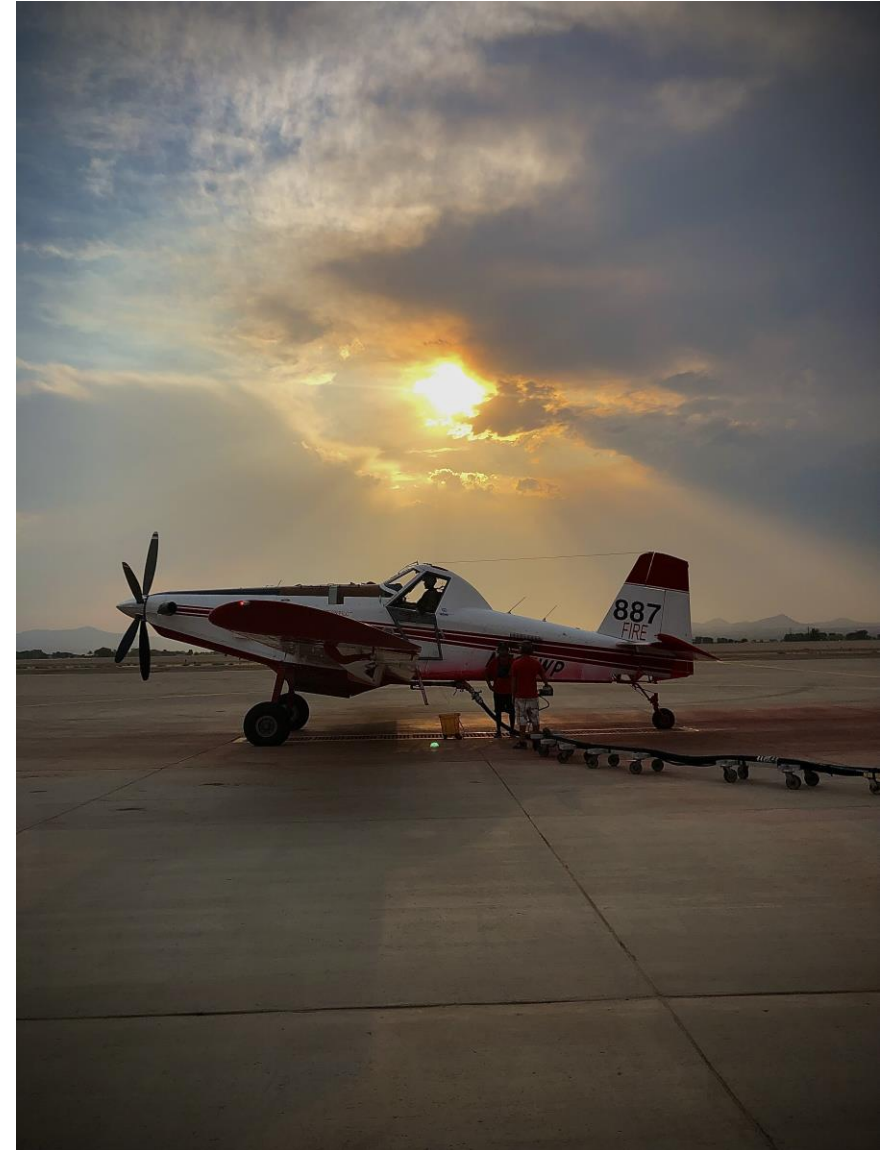
Fire and Fuels

Interagency Fire Center

- Responsible for fire suppression, emergency stabilization and wildland urban interface for
 - Cedar City Field Office
 - Kanab Field Office
 - St. George Field Office
 - Grand Staircase Escalante National Monument.
- Covers four fire zones in Color Country (4,847,782 acres) and Paria River (2,419,294 acres) districts across southwestern Utah and northern Arizona.

Fuels treatment acreage (arial seeding, mastication, lop and scatter and chaining):

- FY22- 23,063 acres
- FY23- 38,483 acres





Color Country GAOA Projects

The Great American Outdoors Act (GAOA) is a historic investment in the protection and sustainment of public lands and Bureau of Indian Education-funded schools. GAOA funding provides economic support to communities by providing jobs and investing in much-needed maintenance for critical facilities and infrastructure on public lands.

Several GAOA projects are happening in Color Country district including

- St. George Field Office
 - Anasazi Valley Trailhead and Tempi'po'op Trail
 - Fort Pearce, Fort Pearce Ridge Off-Highway Vehicle, Dinosaur Tracks, Toquerville Mine, Red Mountain, Gooseberry #1, Gooseberry #2 and Eagle Crags trailheads
 - Red Cliffs National Conservation Area
- Richfield Field Office
 - Starr Springs, McMillian Springs and Lonesome Beaver campgrounds, Hancock Cabin and Dandelion Flat Day Use Area
- Cedar City Field Office
 - Hanging Rock Campground



Color Country BIL Projects

Bipartisan Infrastructure Law—known as the Infrastructure Investment and Jobs Act—aims to “rebuild America’s roads, bridges and rails, expand access to clean drinking water, ensure every American has access to high-speed internet, tackle the climate crisis, advance environmental justice, and invest in communities...left behind.”

The BLM expects to fund dozens of projects across the country in 2022 from the additional dollars including assessing and eradicating invasive species, restoring recreation sites and making them more resilient from erosion and human-caused damage, and advancing the national revegetation effort and the National Seed Strategy.

Color Country BIL Projects

- Sauls Meadow (Richfield Field Office)
- Mesic Meadow Development (Cedar City Field Office)
- Bald Hills Priority Habitat Management Area (Cedar City Field Office)





Color Country IRA Projects

The Inflation Reduction Act of 2022 (IRA) provides \$290 million dollars for conservation, resilience, and ecosystem restoration related programs and activities to advance on public lands.

Two adjacent watersheds (Upper Virgin and Escalante Desert) were identified for possible funding as a single proposed focal area in southwestern Utah.

Proposed project areas include:

- Vegetation
- Riparian, Water, and Wildlife Habitat Management
- Heritage Resources
- Recreation and Travel Management
- Lands and Realty





Richfield Field Office

- Includes: Sanpete, Sevier, Piute, Wayne and Garfield counties
- Robust recreation program including bike trails, canyoneering, photography workshops, and well established motorized trail systems.
- Henry Mountains bison herd
- Community involvement
- Minerals
- Canyonlands Wild Burro Herd
- Henry Mountains travel management planning





St. George Field Office

- Includes: Washington County (629,000 acres)
- 2 National Conservation Areas (109,000 acres in Red Cliffs and Beaver Dam Wash National Conservation Areas)
- 19 miles of designated Wild and Scenic Rivers
- Most outdoor recreation usage in the district with least acreage
- Red Cliffs/ Warner Valley Land Exchange





Cedar City Field Office

- Includes: Beaver and Iron Counties
- Livestock grazing
- Intergovernmental Internship Cooperative (IIC)
- Wild Horses
- Renewable energy
- Habitat restoration
- Utah Prairie Dog
- Sage Grouse





Field Tour May 18, 2023

8:00 a.m. – 1:00 p.m.

Cedar City Field Office Site visits

- Wind
- Solar
- Habitat restoration projects
- Parowan Gap





Questions?

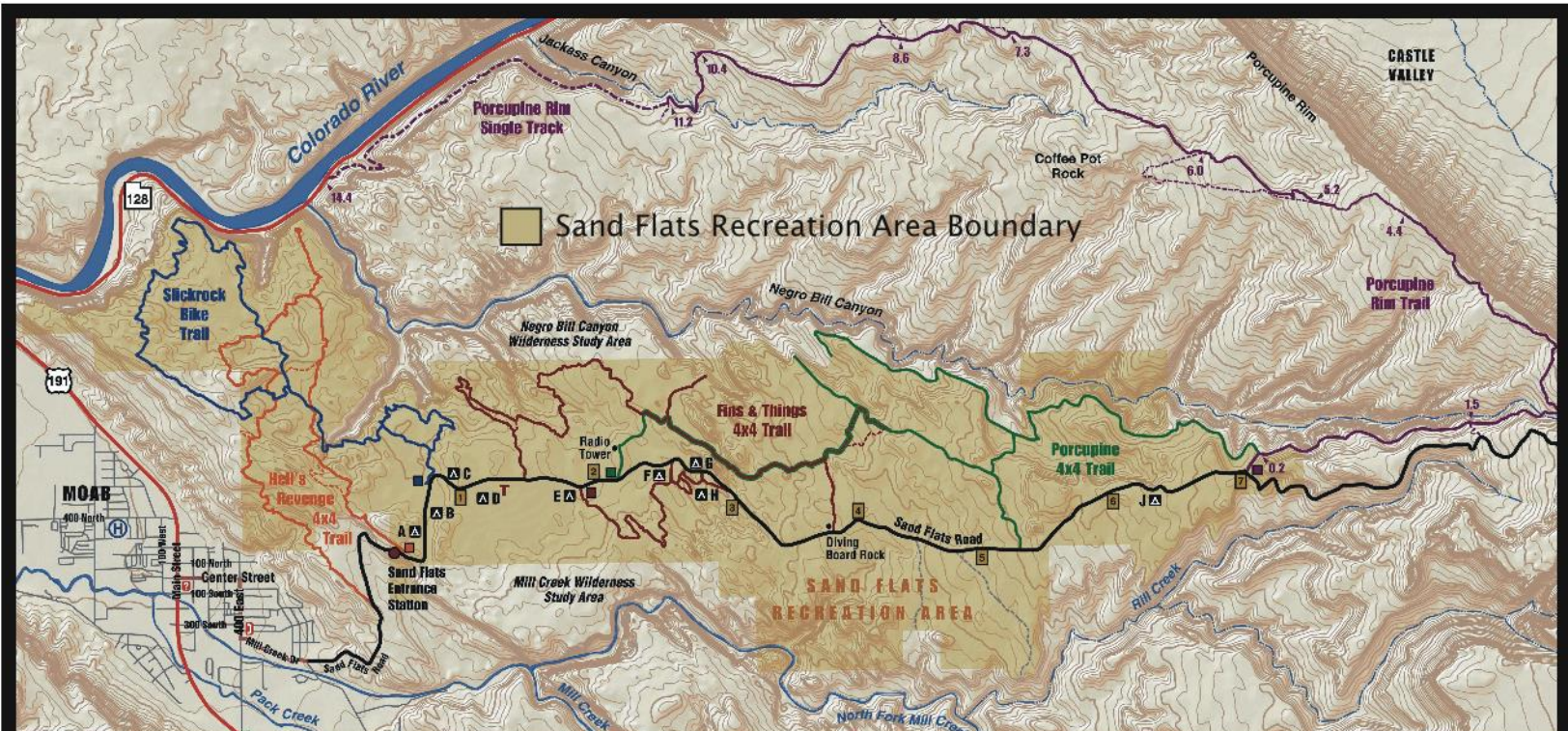
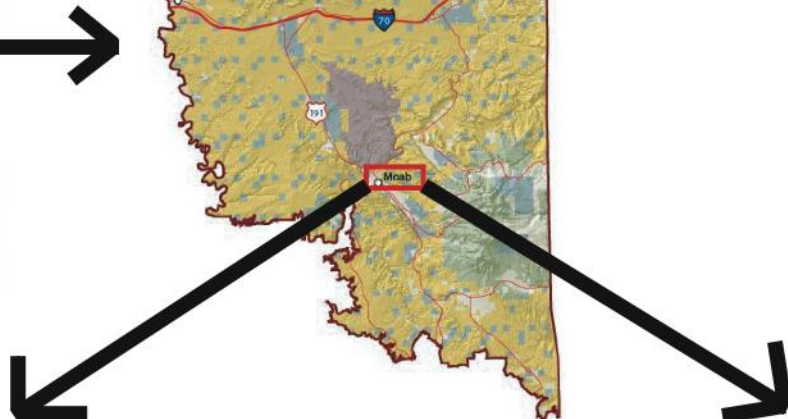
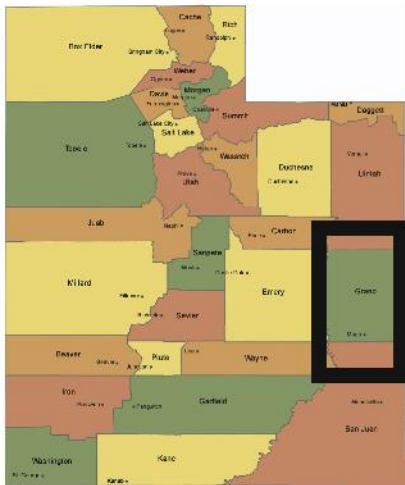
Sand Flats Recreation Area (SFRA) Fee Change Proposal

Presented by
Andrea Brand,
Director
Sand Flats
Recreation Area
May 2023





Sand Flats Recreation Area Moab, UT







The Slickrock Bike Trail is the centerpiece of the Sand Flats Recreation Area



It was created in 1969 and was the first designated National Recreation Trail in Utah



Both motorized and non-motorized recreationists visit SFRA



Sand Flats has 30 miles of challenging 4x4 trails



Famous Hell's Revenge and Fins and Things 4x4 trails



Popular MTB trails include the Porcupine Rim Trail and the new Raptor Route



SFRA has 9 campgrounds



Demographics- 250,000 annual visitors including families and friends...



both young and old...



enjoy recreating at Sand Flats



Partnership and Self-sustainability

The Sand Flats Recreation Area is managed in partnership between the Bureau of Land Management and Grand County as a self-sustaining entity since 1995.



Self-sustainability

- Sand Flats operates as an Enterprise fund under Grand County and all funds remain in this program
- Sand Flats budget comes exclusively from collected fees
- SFRA revenue pays for operating costs- wages, benefits, equipment, supplies, services and facility improvements.

Sand Flats is a Special Recreation Management Area (SRMA)

The Sand Flat Recreation Area is managed as a Destination SRMA. Beneficial outcomes being targeted are:

- Improved skills for outdoor enjoyment and physical activity
- Greater sense of adventure
- Increased local tourism revenue
- Greater freedom from urban living
- Greater family bonding

The Sand Flats mission is:

“To ensure that the outstanding natural features of the area are protected from the adverse impacts of recreational use; provide sustainable public recreation opportunities consistent with the character and capability of the area; provide for public safety and reduction of visitor conflicts; assure the continuation of positive economic benefits to the County associated with public use of the area; and maintain reasonable public access to the area for recreational and other sustainable uses.”

Both the BLM and Grand County aspire to:

....utilize their combined resources and authorities to cooperatively improve conditions within the area so as to better serve the public and establish a mechanism whereby users of the area fund management, protection, and service expenditures.

Grand County/ Sand Flats and BLM partnership was chosen by the Executive Office of the President Council on Environmental Quality as an example of local and federal governments working cooperatively to successfully resolve conservation issues

INTRODUCTION

The Landscape of Cooperative Conservation

Grand County, Utah

In the rural areas of Grand County at southern Utah's Sand Flats Recreation Area are reminders of a remarkable story of the success of conservation and the triumph of cooperation. By the spring of 1993, the Sand Flats Recreation Area near Moab had become one of the foremost mountain-biking destinations in the United States. Administered by the Bureau of Land Management (BLM), and renowned for its Slickrock Bike Trail, Sand Flats had also become the premier destination for bike-riding college students on spring break.

Chaos unfolded at Sand Flats that particular week as too many people crowded onto grounds lacking adequate parking for cars, sufficient space for tents, and enough toilets to meet minimal personal hygiene needs. People filled every available spot, sparking fights as one person's space collided with another's. Fires for cooking lit the night sky, and were fed with whatever wood could be found, including posts from BLM signs.

What occurred during that spring break in 1993 was not acceptable to the people of Moab and Grand County. The lack of infrastructure in Sand Flats to accommodate visitors, persistent overcrowding, and the lack of management to protect a stunning natural environment discouraged other visitors seeking a quality outdoor experience. Yet popular outdoor magazines were touting the biking virtues of the Slickrock Bike Trail. A mecca for mountain bikers, it was drawing larger crowds than ever before to the Sand Flats Recreation Area.

Local citizens had already started to act. A county-appointed, 12-member Slickrock Area Planning Committee issued a report in November 1991 identifying the challenges posed to the community by the increasingly popular recreation area. The report, and the catalyst of spring break 1993, brought Grand County and the BLM together to come up with a plan to tame the wild west atmosphere of Sand Flats. The agency and the county both knew that the BLM lacked the funding and staff to manage the Sand Flats Recreation Area. An innovative solution was needed to steer the recreation area and the community on a new course.

Grand County and the BLM crafted a cooperative agreement in June 1994 that authorized day-to-day management of the

5,260-acre Sand Flats Recreation Area by the county. Under the agreement, Grand County would collect fees for the recreation area and, in partnership with the BLM and with advice from a Citizen Stewardship Committee, would set the priorities and uses for fee revenues. One immediate benefit was the county's ability to use the fees to lease State in-holdings at Sand Flats (1,980 acres) and put the whole area under unified management. The county and the BLM agreed to cooperatively develop infrastructure for camping and parking, a task initially completed with the aid of Americorps volunteers and, today, continued by the partnership.



Cyclists enjoy the view at Utah's Sand Flats.

The budding partnership spirit in shared stewardship went even further. The county and the BLM joined with the National Park Service, the U.S. Forest Service and the Canyonlands Natural History Association to acquire, build, and operate a one-stop Moab Information Center for tourists. The county bought the land

and built the center, which it then leased to the association. As managing partner of the center, the association would cover all operating costs for the center out of the sales revenues garnered annually from over 200,000 visitors. The BLM, in turn, provided supplemental construction funds and, with its sister agencies, now help fund staffing for the facility.

The outcome of the cooperative agreement at Sand Flats between the county and the BLM has been positive. The BLM is now able to ensure the level of management needed to protect and conserve the highly scenic and popular recreation area. Grand County is able to enhance local employment and quality tourism. The Moab tourist industry, the foundation for the county's economy, now enjoys a diverse clientele. The local economy is booming, tourists are well served, and the land is protected and properly managed.

The faces and places of Sand Flats and Grand County, Utah, tell only one story among many citizen and community conservation efforts. Yet the themes of Sand Flats are universal and common, in part or in whole, to every practice and practitioner of cooperative conservation. The themes emerge on private and public lands, rural and urban settings, from plains to the mountains, coastal shores to inland lakes and waterways. It is this commitment of

Sand Flats Recreation Area Recreation Program Overview

- Seeking to provide the facilities and management necessary to provide sustainable recreation opportunities to approximately 250,000 annual public land visitors while enhancing the area's recreation economy and maintaining resource values.
- Contact Station staffed mid-February through November. Self-pay station for when the contact station is closed
- 9 trailheads, over 60 miles of marked trails, 9 toilets and 30 interpretive kiosks and information boards
- 9 fee campgrounds with 140 individual and 6 group sites, 19 toilets and 11 information boards

Sand Flats staff

- 4 full time staff including Director
- 5 part time staff in spring and fall including an intern.
- 2 or more high school apprentices in spring

Day to Day SFRA operations- Staff Contact Station for orientation, safety and fee collection



Daily front country patrols to check compliance, provide security and information in campgrounds and...



And at busy trailheads



Backcountry trail patrols to promote compliance, safety and assess maintenance needs



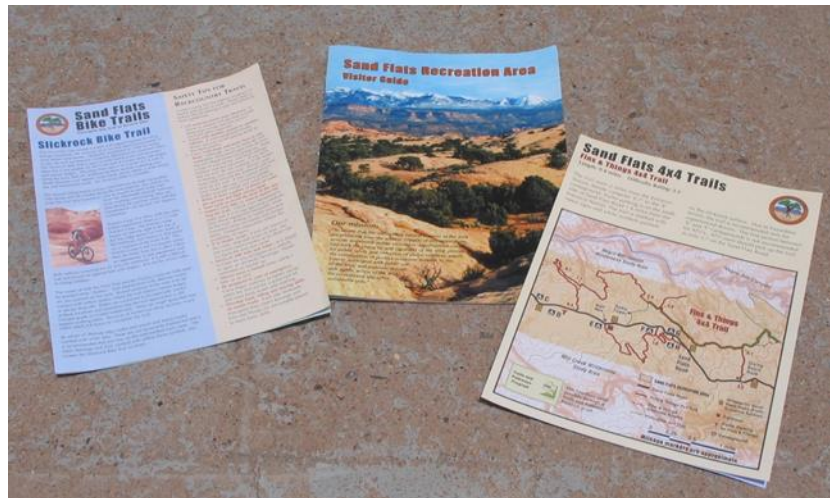
Trail maintenance to protect resources and provide direction



Cleaning and pumping of 28 toilets and trash removal



Brochures, kiosks and signs



High School Apprenticeship Program since 1995 funded with collected fees and grants



Fee Collection Authority

Standard Amenities at Sand Flats Recreation Area

Standard Amenity Requirement	Sand Flats Recreation Area
Designated developed parking	Yes
Permanent toilet facility	Yes
Permanent trash receptacle	Yes
Interpretive sign/exhibit/kiosk	Yes
Picnic tables	Yes
Security services	Yes

FLREA, Section 803(f)

Fee Collection Authority

Expanded Amenity Fee Site Campgrounds (must maintain a majority)

Utah Campground Amenities	
Expanded Amenity Requirement	Sand Flats Recreation Area
Tent or trailer spaces	Yes
Picnic tables	Yes
Drinking water	No
Access roads	Yes
Collection of fee by agent	Yes
Reasonable visitor protection	Yes
Refuse containers	Yes
Toilet facilities	Yes
Simple devices for containing a campfire	Yes

FLREA, Section 803(g)(2)(A)campgrounds;(C)
group sites;(G) reservation services

Proposed Fee Change

Site Type or Service	Description	Current Rate	Proposed Rate
Day Use	Fee for one day of day use per vehicle	\$5.00 day or \$10 for 7 days	\$10.00 for 7 days (2023)
Utility Trailer	Fee for day use and camping	\$5.00	\$0.00 (2023)
Annual Pass	Fee for an annual pass for day use	\$25.00	\$30.00- \$50.00 (2025 and beyond)
Campground	Fee for camping in developed campsites	\$15.00 per vehicle	\$20.00-\$30.00 per vehicle (2025 and beyond)
Group Site	Fee for camping in group site	\$60.00	\$80.00-\$100.00 (2025 & beyond)

The proposed fee was developed through the draft business plan for the Sand Flats Recreation Area

SFRA revenue totals in dollars and annual visitation totals

Annual Remit Totals By Year (2017-2021)

2017	2018	2019	2020	2021							
\$626,833	\$639,666	\$665,153	\$527,342	\$847,350							

Annual Visitation Totals By Year (2017-2022)

Annual Visitation Totals By Year (2017-2022)					% of Change				Total change	
2017	2018	2019	2021	2022	17	18	19	21	22	2017-22
146,374	152,570	162,086	213,953	184,115		4.5%	6.5%	32%	-14%	26%

Projected Revenue With Fee Increase 2023

This table represents projected increased revenues for the entire 2023 year; actual revenues are projected to be less because fee increase would only be for a partial year. Fees are to be phased in from 2023, 2025 and beyond.

Remit Totals	2019	Proposed Rate Change	Estimated Additional Fees	Total 2023
Camping	\$321,738	From \$15 to \$30 per vehicle per night with up to 5 people, additional persons \$2 each (implement to \$20 per vehicle in 2025). Drop fee for utility trailer (implement 2023)	(\$13,464)	\$308,274
Trailer	\$28,997	Drop fee for utility trailer (Implement 2023)	(\$28,997)	\$0
Annual pass	\$25,915	From \$25 to \$50 each (Implement to \$30 in 2025)	\$0	\$25,915
Group sites	\$32,325	From \$60 night to \$100 night (Implement to \$80 by 2025)	\$0	\$32,325
Day Use Per Vehicle	\$238,453	From \$5 to \$10 per week only (Implement 2023)	\$200,708	\$439,161
Day Use Per Person by Bicycle or Motorcycle (Shuttle fee no change)	\$14,334	From \$2 to \$5 per week only (Implement 2023)	\$16,689	\$31,023
Other	\$3,638			\$3,638
Total Revenue from Proposed Fees	\$665,400		\$174,936	\$840,336

Fee Increase Based on Cost Recovery Method

- Major operating expenses have increased substantially over last 6 years. Wages have increased by 53% and benefits by 51% due to additional staff and increased costs. Toilet pumping and waste disposal costs increased by 63%. Trash collection service costs increased by 73%.

Fee Increase Based on Fair Market Value

- New fee structure is equal to or less than all other comparable sites in proximity
- BLM's decision on whether to charge or not charge fees is based in part on comparable fees charged elsewhere and by other public agencies and by nearby private sector operators

REA 803 (b)

Consideration of comparable fees charged by nearby public land agencies and private sector

Name	Day Use Rates	Camping Rates	Amenities
Arches National Park	\$30/ vehicle entry fee for 7 days; \$15/ bicycle or pedestrian, \$25/ motorcycle fee for 7 days; \$55/ local annual pass for parks in Southeast Utah Group	\$20/ site per night up to 2 vehicles plus Day Use Fee; Group site, \$3 per person with minimum number occupants paid.	Picnic tables, drinking water, access road, fee collection, LE, trash container, toilets, fire rings
Canyonlands National Park	\$30/vehicle entry fee for 7 days; \$15/ bicycle or pedestrian, \$25 motorcycle fee for 7 days; \$55 local annual pass for parks in Southeast Utah Group	\$15 to \$20/ site per night up to 2 vehicles plus Day Use Fee; Group site, \$3 per person with minimum number occupants paid.	Picnic tables, drinking water, access road, fee collection, LE, trash container, toilets, fire rings
Dead Horse Point State Park	\$20/ vehicle entry fee, \$10 motorcycle or bicycle, annual pass to all Utah State Parks \$100	\$40 to \$50/ vehicle per night; second vehicle is \$20.	Picnic tables, drinking water, access road, fee collection, LE, trash container, toilets, fire rings
BLM-Moab	None	\$20/ site per night	Picnic tables, access road, fee collection, LE, trash container, toilets, fire rings
Sand Flats Recreation Area	\$5/ vehicle for 1 day or \$10/ for 7 days; \$2/ bicycle, shuttle, motorcycle entry fee for 1 day or \$5/ for 7 days; annual pass \$25, utility trailer fee \$5	\$15/ vehicle per night; Group campsite, \$60 for 11-16 persons.	Picnic tables, access road, fee collection, LE, trash container, toilets, fire rings, interpretive signs/kiosks.
Nearby Private Sector Operators		\$40 plus per night	Picnic tables, drinking water, showers, access road, fee collection, LE, trash container, toilets, dump station, fire rings

Socio-economic Impacts

- Approximately 39% of visitors would not see an increase in fees in 2023
- Dropping trailer fee to encourage trailering, 8% would see a reduction in costs.
- Modest level of fee increase not expected to create undue hardship
- Rate increases would make the fees more comparable to those charged by other public land agencies in the Moab area

Socio-economic Impacts continued

- Federal lands near Moab are a major recreation destination. Public lands, because of their large number of acres and modest fees, continue to make it possible for many visitors to enjoy relatively inexpensive trips to the Moab area.
- The public considers SFRA to be a good value as visitation from 2017 through 2022 has grown steadily.
- It is expected that the public will still see the SFRA fees as a good value if the proposed rate increase is granted. SFRA would still be comparable to fees for nearby public lands.

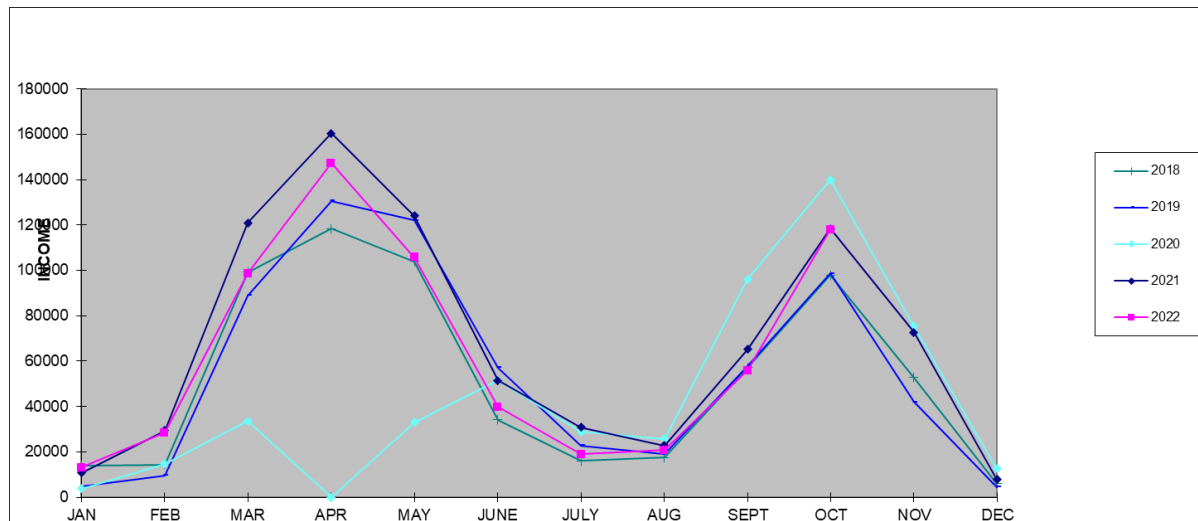
To Stay “in the Black”

SFRA requires annual revenue and a fund balance to operate as a self-sustaining entity. The pandemic highlighted just how important this fund balance is.

- SFRA revenue pays for operating costs: wages, benefits, equipment, supplies, services and facility improvements.
- It is critical to maintain a positive fund balance so that the SFRA can provide required services, quickly address threats to public health and safety and to build up funds for future investments in recreation area infrastructure.
- The Fund Balance will fluctuate as it is allowed to build up to fund projects and then drop as projects are completed.

SFRA Fund Balance

- SFRA fund balance at the start of 2020 was its highest ever at approximately \$880,000 and at the end of 2020 it was reduced to approximately \$640,000.
- Staff was able to stay employed even with a two month shut down. They worked on a backlog of front and backcountry maintenance projects.
- Major projects were shelved but services were not cut. Pandemic protocols were put into place so operations could resume.



Projected Revenues, Budget and Fund Balances Without and With Modified Fees

Categories	2023	2024	2025	2026	2027
Total Projected Revenue	814,700	835,881	859,506	883,132	906,757
Total Projected Expenses	1,041,934	1,000,184	1,075,200	1,223,368	1,275,784
Fund Balance or Debt at Beginning of Year Without Modified Fees	520,427	293,193	128,890	--86,804	-427,040
Subtract Difference Between Expenses and Revenue	227,234	164,303	215,694	340,236	369,027
<i>Fund Balance End of Year Without Fee Change</i>	<i>293,193</i>	<i>128,890</i>	<i>-86,804</i>	<i>-427,040</i>	<i>-796,067</i>
Projected Fund Balance at Beginning of the Year with Fee Change	520,427	468,193	478,890	554,342	505,252
Subtract Difference Between Expenses and Revenue	227,234	164,303	215,694	340,236	369,027
Fund Balance	293,193	303,890	263,196	214,106	136,225
Projected Additional Revenue with Day Use Fee Change in 2023. Changes to Camping and Annual Pass Fee implemented in 2025*	175,000	175,000	291,146*	291,146	291,146
<i>Fund Balance End of Year With Fee Change</i>	<i>468,193</i>	<i>478,890</i>	<i>554,342</i>	<i>505,252</i>	<i>427,371</i>

Priorities for Potential Revenue Increase

- The bulk of the additional fees proposed would go to offset rising operational expenses necessary to maintain existing levels of service to Sand Flats visitors.
- These fees would also be used for needed additional staffing, maintenance of existing facilities and to help meet the demand for new facility development.

SFRA Improvements

In 2015 SFRA presented a fee increase proposal to URAC which received recommendation. Using collected fees, grants, donated labor, equipment and materials from the BLM and with the assistance of the Grand County Road Department, and contractors, the following major projects were completed over the last eight years.

Constructed new parking areas for trailer parking and also for hiking and mountain biking trails



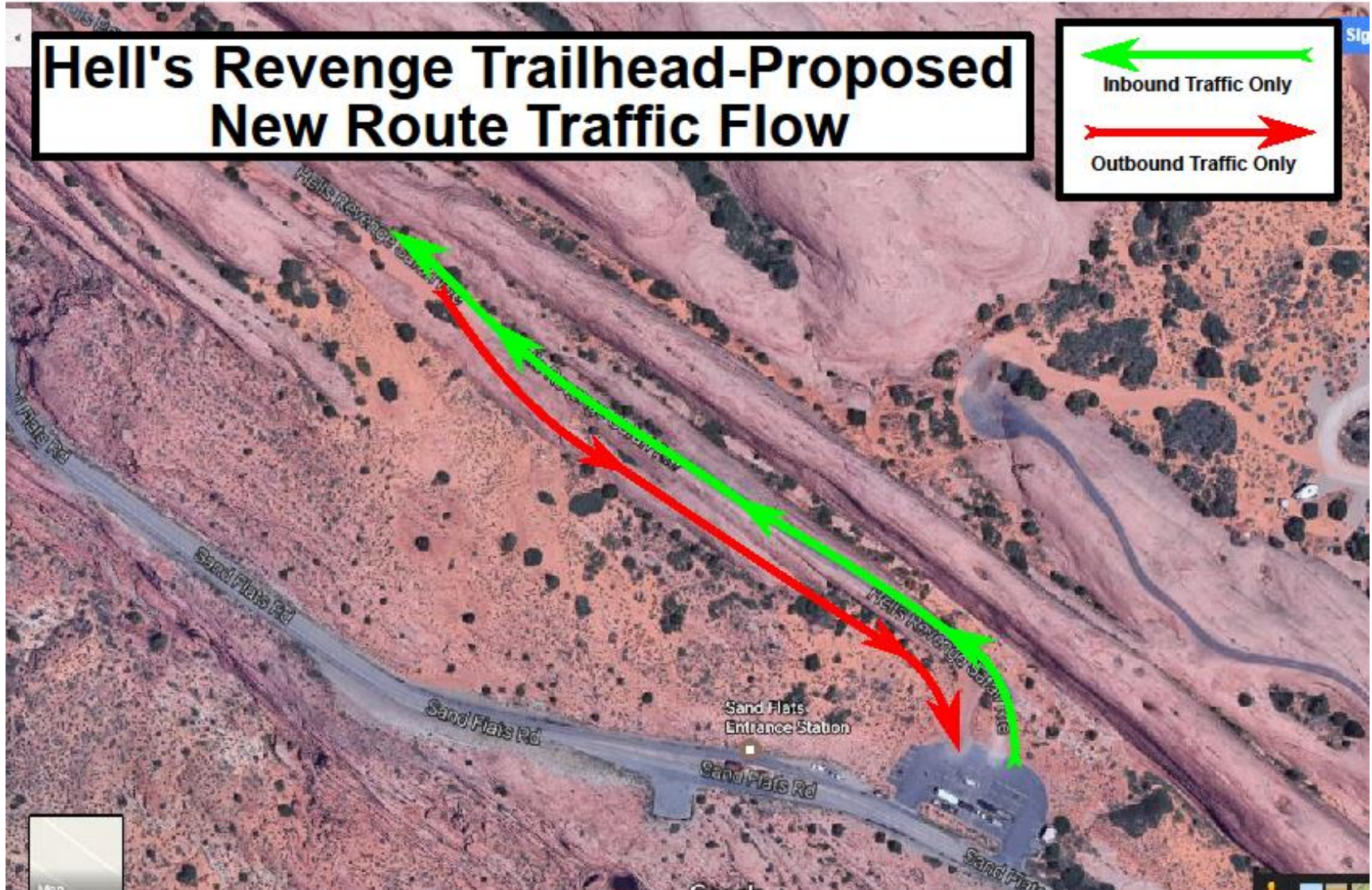
Maintained two existing parking lots-
crack sealed, seal coated and striped.



Maintained and Improved Motorized Trails

- Improvements were made to the Hell's Revenge and Fins and Things 4x4 trails and trailheads and a new route was added to the Slickrock Bike Trail.

Created new exit route for Hell's Revenge 4x4 trail to improve safety and traffic flow



Contractor constructed new concrete ramps at Hell's Revenge 4x4 trail entrance; before and after photos



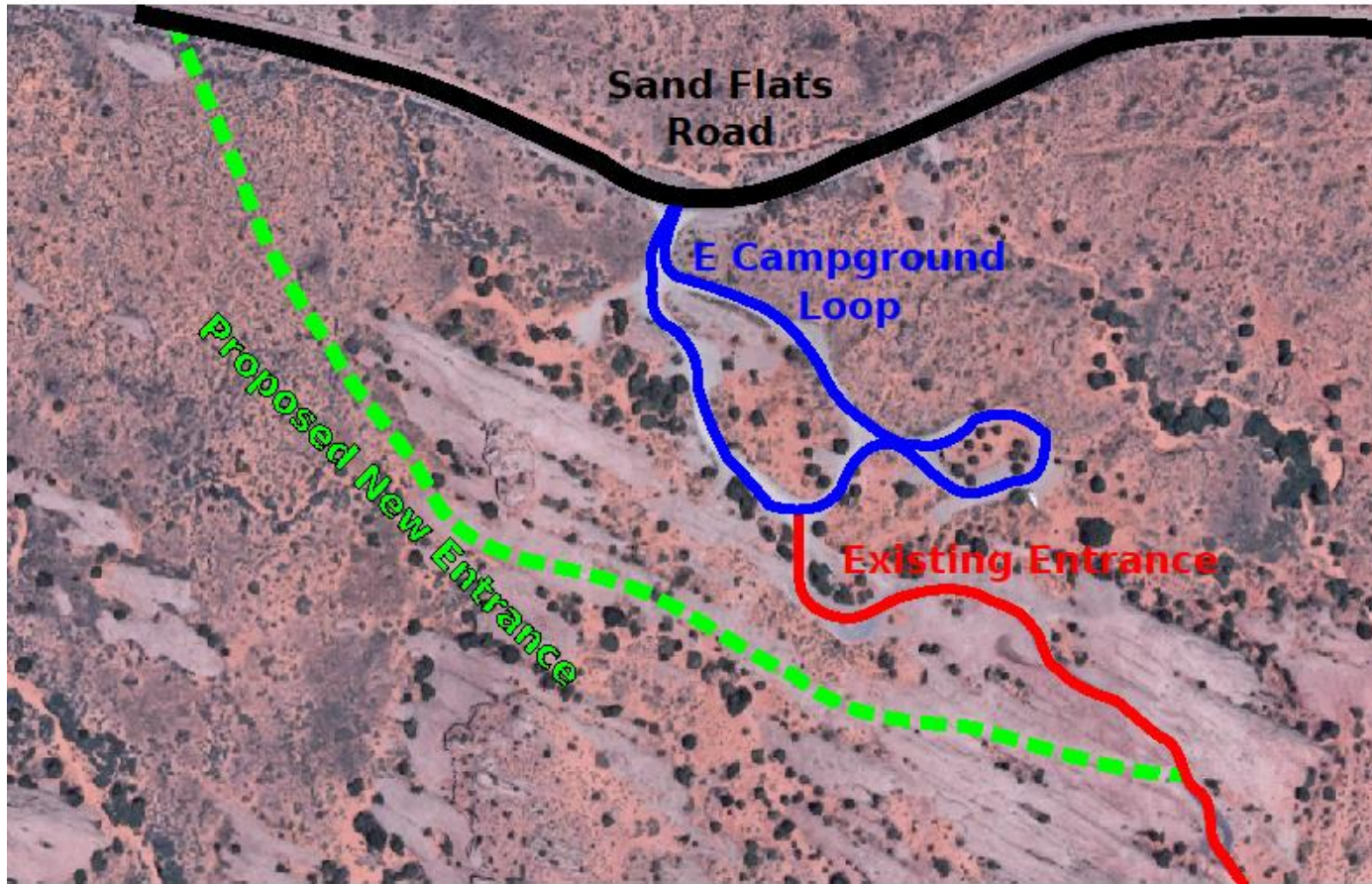
View from top of entrance fin;
new exit road below on right



Fins and Things 4x4 Trail



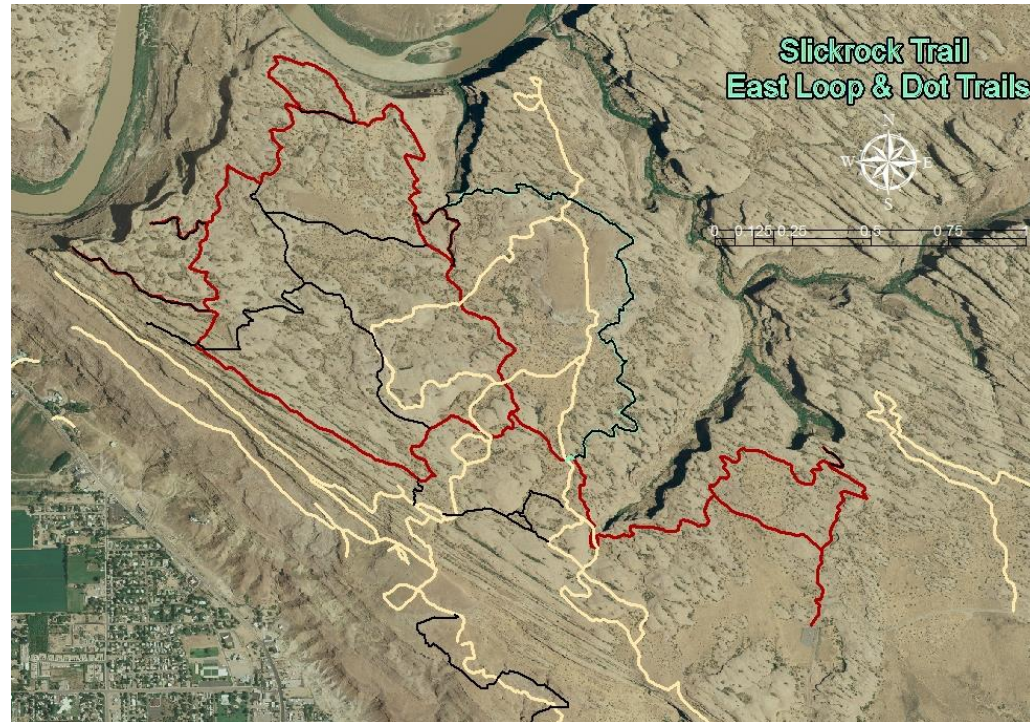
New Fins and Things 4x4 entrance route was moved out of the campground



New Fins and Things 4x4 gravel entrance road built by Grand County Road Dept. in partnership with the BLM and paid for with SFRA funds



Added new 3 mile Above Abyss route to the Slickrock Bike Trail for bikes and motorcycles with donated labor



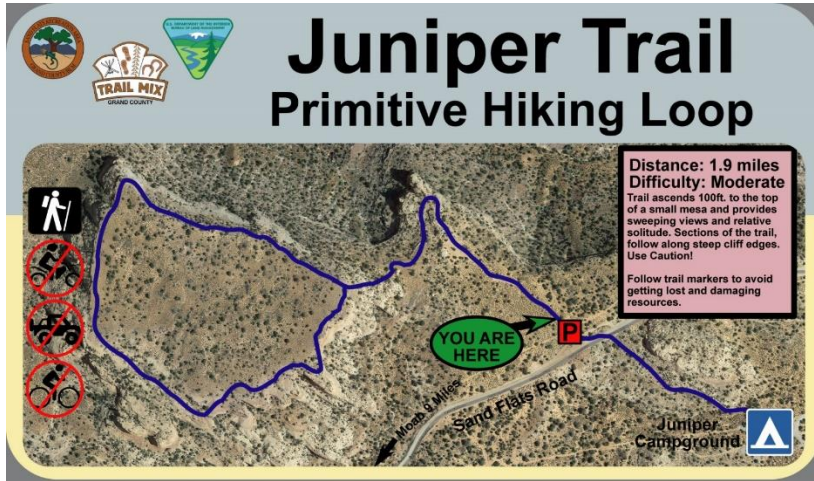
SFRA staff, Grand County Motorized Trail Committee, local jeep clubs and volunteers performed on-going trailside restoration work along 30 miles of 4x4 trails



Helped to create new non-motorized trails

- Since 2016 SFRA has added 12 miles of non-motorized trails and associated parking areas with Grand County Active Transportation and Trails (GCATT), the BLM and community volunteers and partially paid for with Sand Flats collected fees.

Juniper Hiking Trail



Raptor route non-motorized trail

Falcon Flow Trail Info

Non-Motorized Trail

Open To: Mountain Biking, Hiking, Running

Mountain Biking Overview: Falcon Flow features fun flowy singletrack mixed with some challenges along the way. This trail can be ridden on its own as a loop (see route info on back) or as part of the larger Whole Enchilada Trail Network as an alternative to Porcupine Rim.



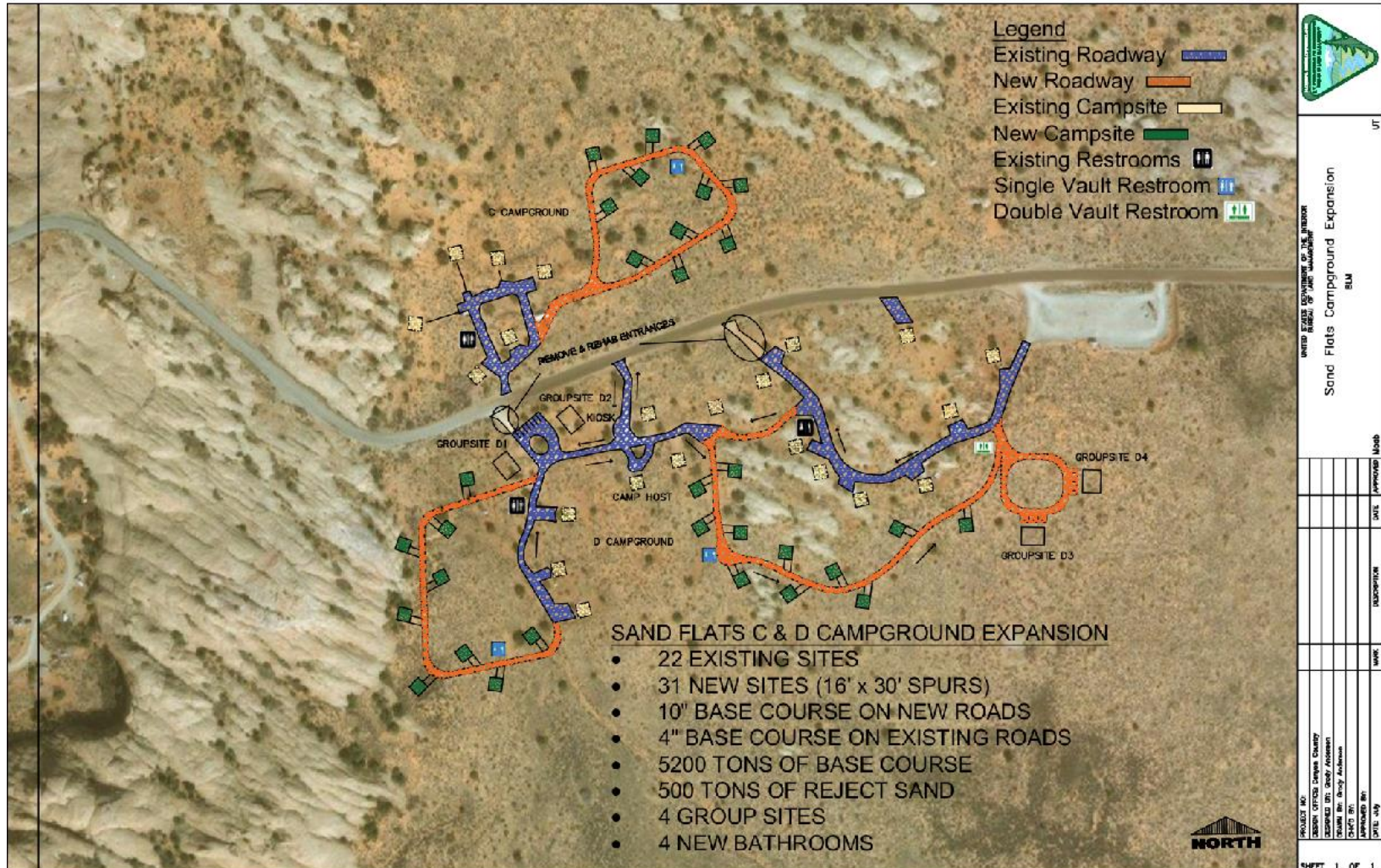
Falcon Flow Trail



Campground Improvements

- Major improvements have been made to two campgrounds including improving 40 existing individual campsites and adding 30 more. Four new group sites were built and shade structures constructed.
- Project was completed with BLM deferred maintenance funds, equipment and labor, Grand County Road Department resources and SFRA funds from collected fees.

Campground C and D Expansion



New expanded campgrounds



New toilets



New group campsites built and reservable on Recreation.gov



Sand Flats/ GCATT new modular office and yard



Equipment purchased



Education and Interpretation

- New interpretive kiosks, updated brochures, flower guide, Sand Flats website, educational videos, documentary film, International Dark Sky application



SFRA, Moab BLM and Grand County travel council collaborate to produce Educational videos featured on websites and local TV channel to educate on “Leave No Trace” principles



[Link to “5 Tips for an Awesome Moab Adventure” video](#)

Sand Flats is applying to be an International Dark Sky Park. SFRA holds events including star parties and moon lit hikes.

CELEBRATING THE NIGHT AT SAND FLATS RECREATION AREA

Perseids Meteor
Shower Party



August 12th
9 pm to 11 pm
40 spaces available

Full Moon Hike



August 20th
8:30 pm to 10 pm
10 spaces available

Star Parties

September 30th
7:30pm to 9:30pm
20 spaces available



October 22nd
7pm to 9pm
20 spaces available

To sign up, email stargazemoab@gmail.com
Space is limited so sign up soon!

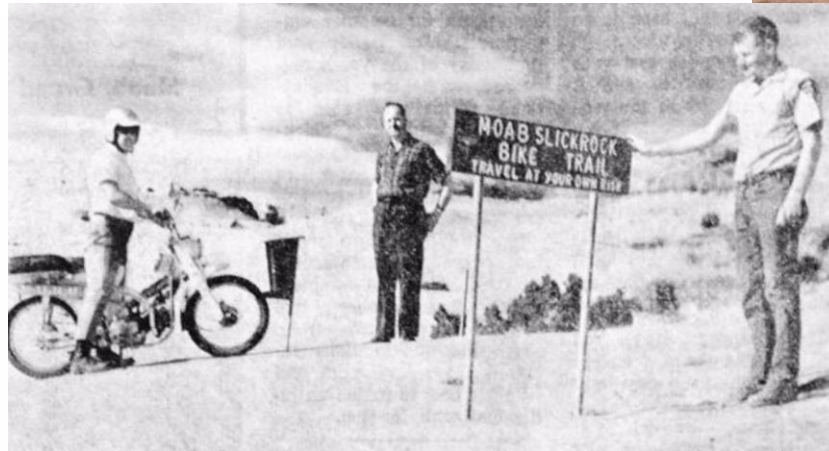
50 Years of Slickrock 1969 - 2019



50 Years of Slickrock

- The Moab community considers Sand Flats their backyard. This was shown more than ever during the 50th anniversary celebration of the Slickrock Bike Trail.
- Sand Flats and the Moab BLM produced a documentary film on the history of this iconic trail and with the community held a commemorative event honoring trail founder Dick Wilson.

Event and film honored Dick Wilson, trail founder



50 YEARS OF
SLICKROCK

CELEBRATING THE 50TH ANNIVERSARY OF
THE SLICKROCK BIKE TRAIL



[Link to 50 Years of Slickrock documentary film](#)

SFRA Provides Funds to Grand County Search and Rescue; it has the highest incidents of Search and Rescue in Utah Since 1998. Sand Flats has contributed over \$300,000 since 1998.



Sand Flats holds Volunteer Days

- Members of the community can volunteer at SFRA for four hours and earn an Annual pass.



Planned Future Improvements

The fee change proposal would make funds more readily available to address some long and short term maintenance and improvement needs.

- Improve traffic flow at SFRA contact station estimate \$150,000
- Maintain existing parking lots estimate cost \$70,000 each time
- Purchase of trucks and patrol UTVs approximately \$176,000
- Build carport for Sand Flats office yard to protect equipment \$50,000.
- Matching funds for construction of new two-mile non-motorized trail to parallel the Sand Flats Road and improve visitor safety, approximately \$100,000.
- Pave seven miles of the Sand Flats road, including bike lanes; this project is estimated to cost \$1.4 million per mile. SFRA would provide some funding to this project if these federal grants are awarded.
- On-going trailside restoration work and trail improvements along 30 miles of 4x4 trails.

Impacts of Not Increasing Fees

- SFRA staffing would not be adequate
- Services would be dramatically reduced
- Reduction in services would negatively impact visitor experience
- Visitor safety would be compromised
- Facility improvements and additions would not occur
- Increased negative impacts on the environment would occur

Public Outreach Efforts

- Posted an announcement at the SFRA entrance station and on all recreation area kiosks
- Issued a news release to local and statewide media
- Posted the draft business plan on the Moab BLM and Grand County websites
- Prepared an information sheet to be distributed from the Moab BLM Moab Field Office to persons requesting information about the proposed fees
- Facilitated four open public meetings, hosted by the Sand Flats Stewardship Committee and the Grand County Council who approved this Fee Change Proposal
- The Fee Proposal will be reviewed by the Bureau of Land Management's Recreation Resource Advisory Council for Utah

Results of Public Outreach Efforts

During the public comment period on the Sand Flats Business Plan, 27 comment submissions were received. All were from people who reside in Moab. All but two of the commentators supported the fee increase with the following exceptions shown on table.

Comments Received

Comment	Number of people expressing idea
The fee increases are fair, but the yearly pass increase (from \$25 to \$50) is too much for Moab residents. There should be a “locals pass”. Locals have to bear the brunt of the tourist impacts, so this could compensate for that fact.	24
The yearly pass increase is too high compared with surrounding National Parks	1
There should be a lower rate (both weekly and yearly) for non-motorized users vs. motorized users. This reflects the various impacts made by each of the groups.	3
The short term pass should be for three days, not a week – the proposed weekly charge is too cheap for tourists. It should be at least \$15	2
Increase the weekly rate more and not the annual pass.	1
There should be no increase in fee for those entering on bicycles	1
The camping fee increase is too great, compared with the National Parks.	2
Campers in large rigs (i.e., RVs) should be charged at a higher rate than those camping in tents.	1

Request URAC pass a motion that this proposal demonstrates general public support and to recommend that SFRA implement the changes to the fee program as proposed



SFRA Summary

- Successful Partnerships
- Self-sustainability
- Visitation continues to increase
- Improvements made with collected fees, grants and through BLM partnership

Thank you. Questions?



For more information please go to the links below

- Sand Flats website www.sandflats.net
- [“5 Tips for an Awesome Moab Adventure” video](#)
- [50 Years of Slickrock documentary film](#)
- [Grand County Travel Council Educational videos](#)
- [Grand County Public Lands Ordinance](#)
- [Utah's New Off-Highway Vehicle Education Course \(HB 180\)](#)
- [OHV Tips- Designated Trails- Trail Etiquette](#)



UTAH CULTURAL SITE STEWARDSHIP

Introductions

Nicole Lohman

UCSS BLM Main Point of Contact

- **MA from NAU in Applied Anthropology**
- **Practicing Archaeology for about 25 years**
- **Wisconsin Native**
- **Owns a house listed on the National Register**





Introductions

Ian Wright

- **Utah Cultural Site Stewardship Coordinator**
- **State Historic Preservation Office**
- **Background in community engagement programs**
- **Masters in Cultural Heritage Management - Johns Hopkins**
- **From: Salt Lake City**
- **Hobby: Woodworking and what I do for a job**



Overview

- **Program background**
- **What stewards do**
- **Why site monitoring matters**
- **How it works**
- **Data & reporting**
- **Culture of engagement**
- **More than just stewards**

Why A Cultural Site Stewardship Program?

120,000+
Sites

**World
Renowned**

**Quality
of Life**

**Loss of
History**

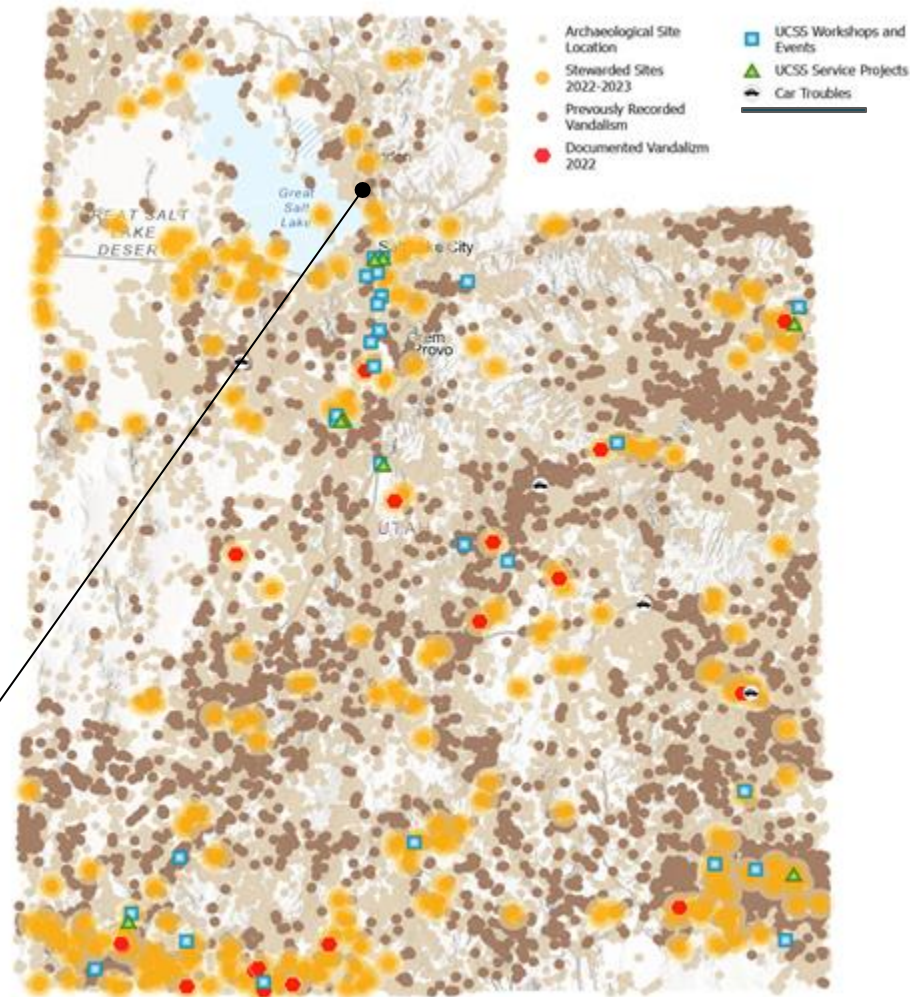


7,000 Archaeological sites Vandalized

Land Managers Need The Public's Help!



Our latest car trouble stat...





Change Of Thinking

Gatekeeping



Public Participation



BLM's Past with Stewardship



Pre ~ 2015: Individually managed at offices

~2015 to 2019: BLM agreement with Friends of Cedar Mesa to launch and manage a BLM statewide program.

2020 onward: New agreement with Utah SHPO for a Statewide Stewardship Program.

BLM Financial Contributions To Stewardship



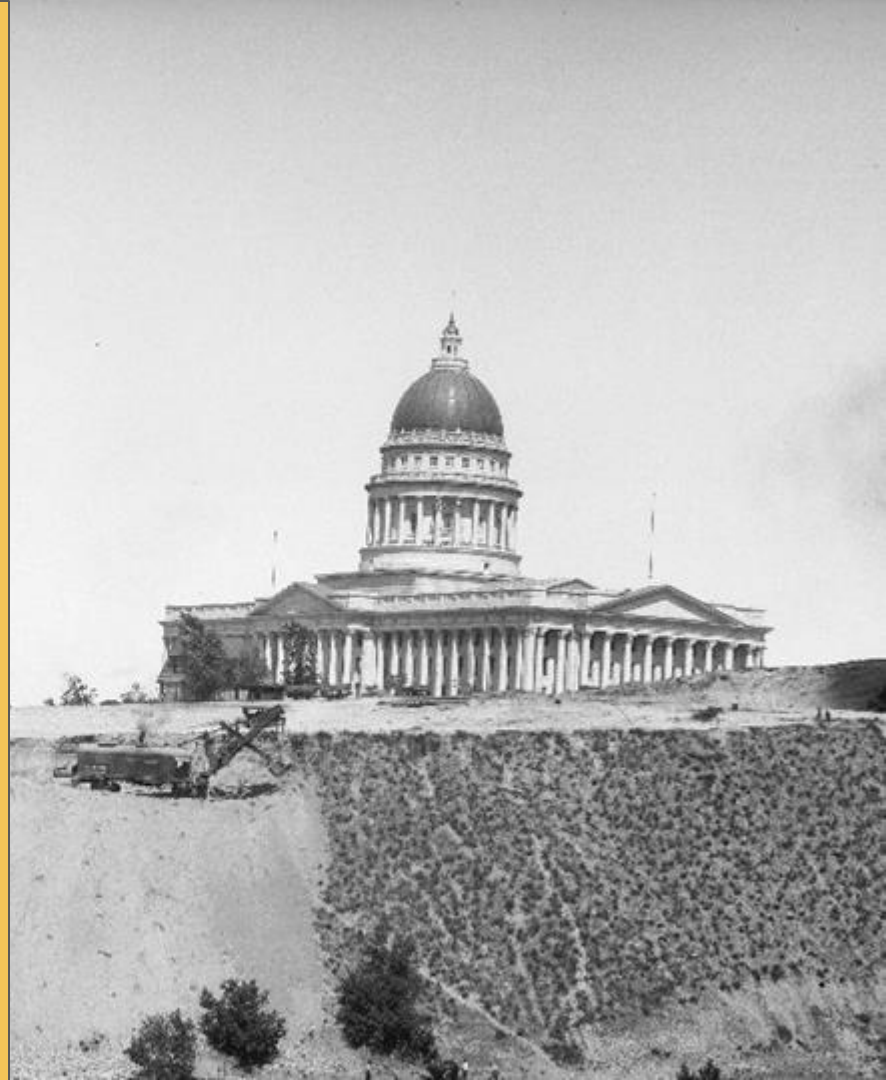
\$87,500

**BLM Steward Tooele County
- WW2 Bombing Range**

Utah State Legislature

**Statewide Centralized
Stewardship Effort**

**State Historic Preservation
Office**



Ongoing Support Each Legislative Session



**Chris Merritt & Rep Doug Owens
at 2023 Legislative session**

Staff

Vehicle

**Dedicated
Funds**

Spencer Cox Governor of Utah

It's a remarkable legacy of human endurance and adaptation.

Utah Stewardship Program Centralization With SHPO

Rio Grande

**Archaeology
Records**

Compliance

**Historic
Preservation**

**Human
Remains**

**Public
Archaeology**

Utah Lands

Tribal

5.0%

Private

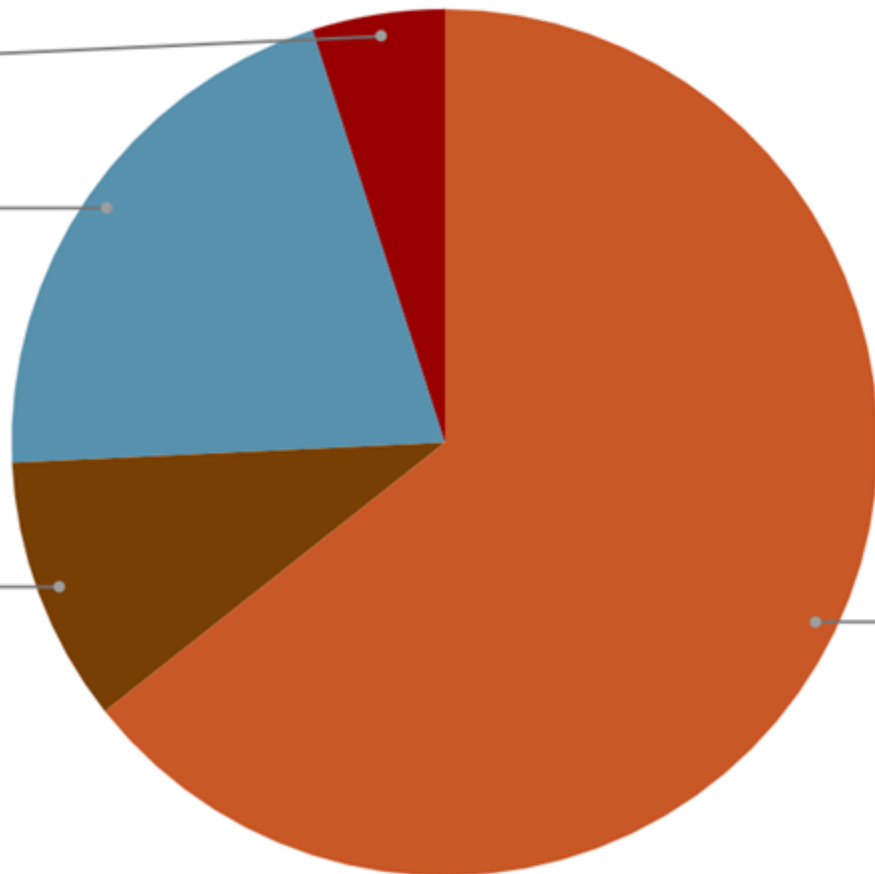
20.8%

State

9.9%

Federal

64.4%

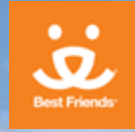


UCSS Program Partners

Nonprofit/Corporate

State

Federal





**Support
Land
Managers**

**Monitor
Sites**

**Report
Any
Change**

**Educate
The
Public**

What do stewards do?

**BLM Archaeologist Roy Plank and UCSS
Stewards Cedar City Field Office**

**Stewards helping secure a site
that has been vandalized.**



**UCSS Provides The Public With
Opportunities To Take Action!**

UCSS Stewards Operating Statewide

340 - Total UCSS Stewards YTD



2023 - Continued Smart Growth

**Rick Mathews - BLM & SITLA Steward
- Utah & Uintah Counties**

723 - Total Sites Being Stewarded Statewide

These numbers are forever changing as some sites need multiple stewards, new cultural sites are being identified by different descendant communities, and visitation increases.

352 - Sites In Need Of Stewards As Of Today!

**Bill & Ted (nojoke) - BLM Stewards -
Washington County**

9,055 - Total Stewarding Hours YTD

UCSS Steward contribution includes monitoring sites, related training, service projects and workshops. Volunteer hours and miles have been compiled and converted into a dollar value:

Volunteer Hours in Dollars:
\$287,949

Volunteer Miles in Dollars:
\$45,724.79

120,328.38 - Total Miles Driven YTD

BLM Stats 2022

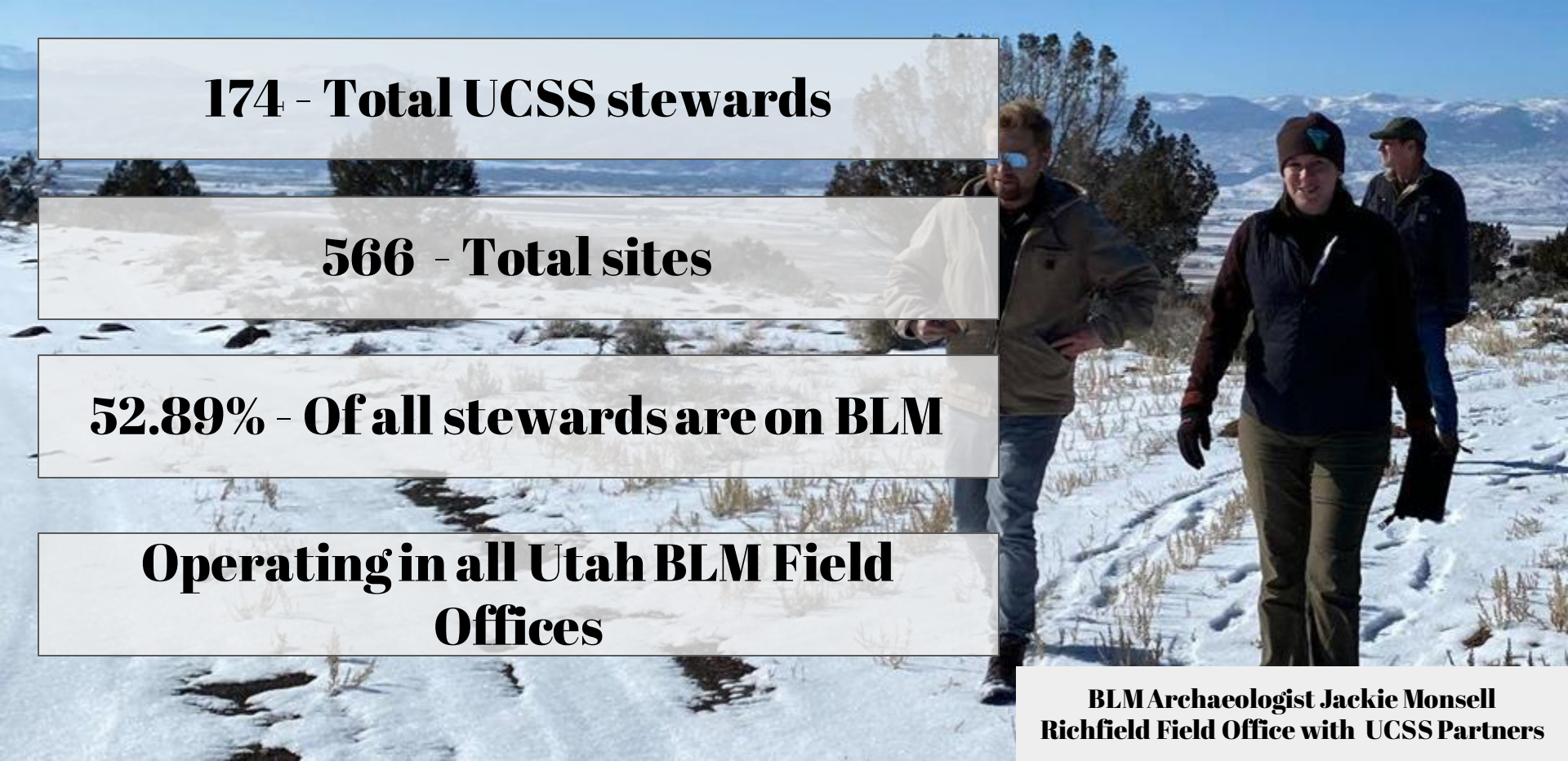
174 - Total UCSS stewards

566 - Total sites

52.89% - Of all stewards are on BLM

**Operating in all Utah BLM Field
Offices**

**BLM Archaeologist Jackie Monsell
Richfield Field Office with UCSS Partners**



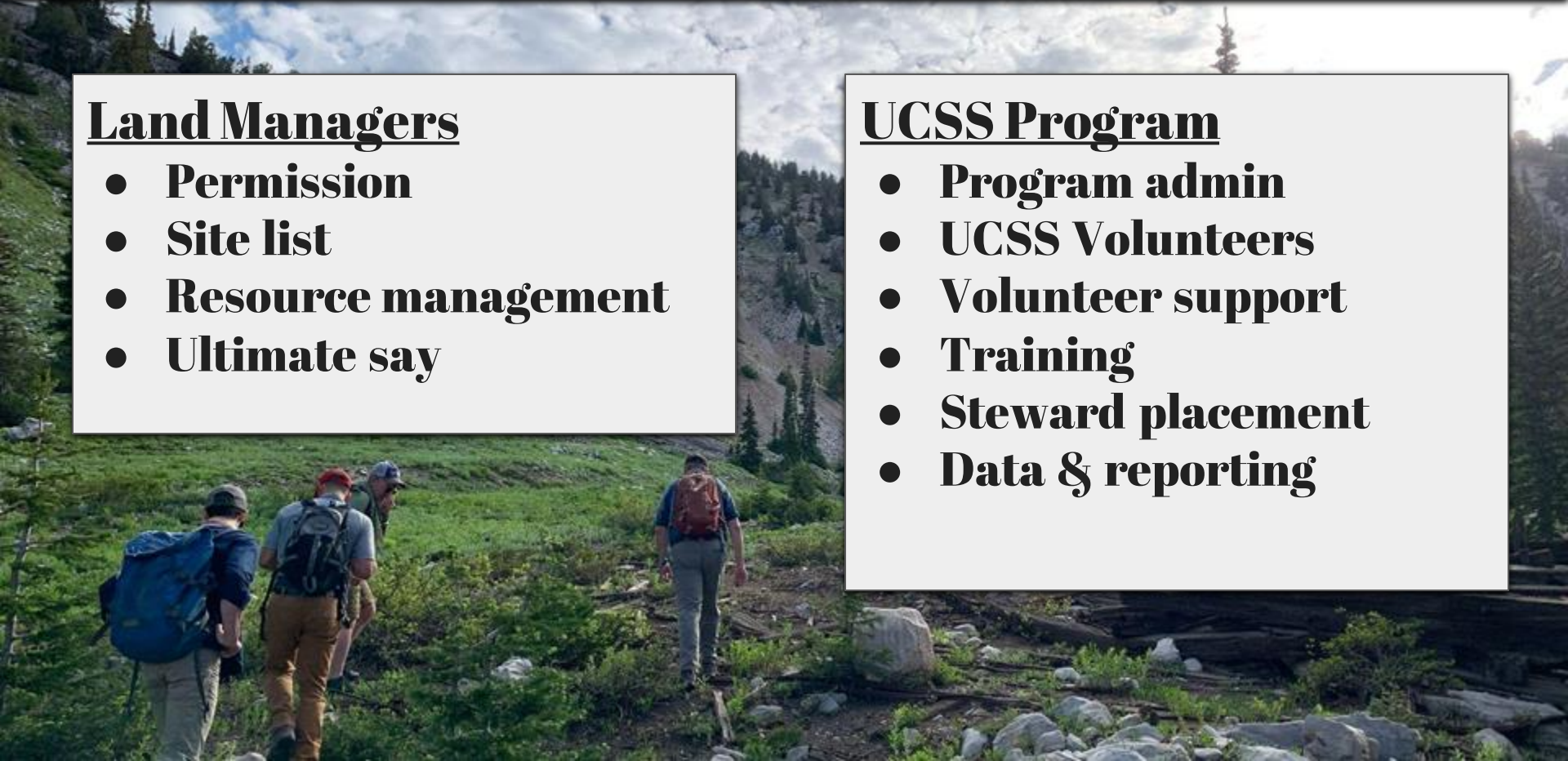
How UCSS Works

Land Managers

- **Permission**
- **Site list**
- **Resource management**
- **Ultimate say**

UCSS Program

- **Program admin**
- **UCSS Volunteers**
- **Volunteer support**
- **Training**
- **Steward placement**
- **Data & reporting**



Program Format

Recruit, Receive Applications



In Class Training



Site Matching & Placement

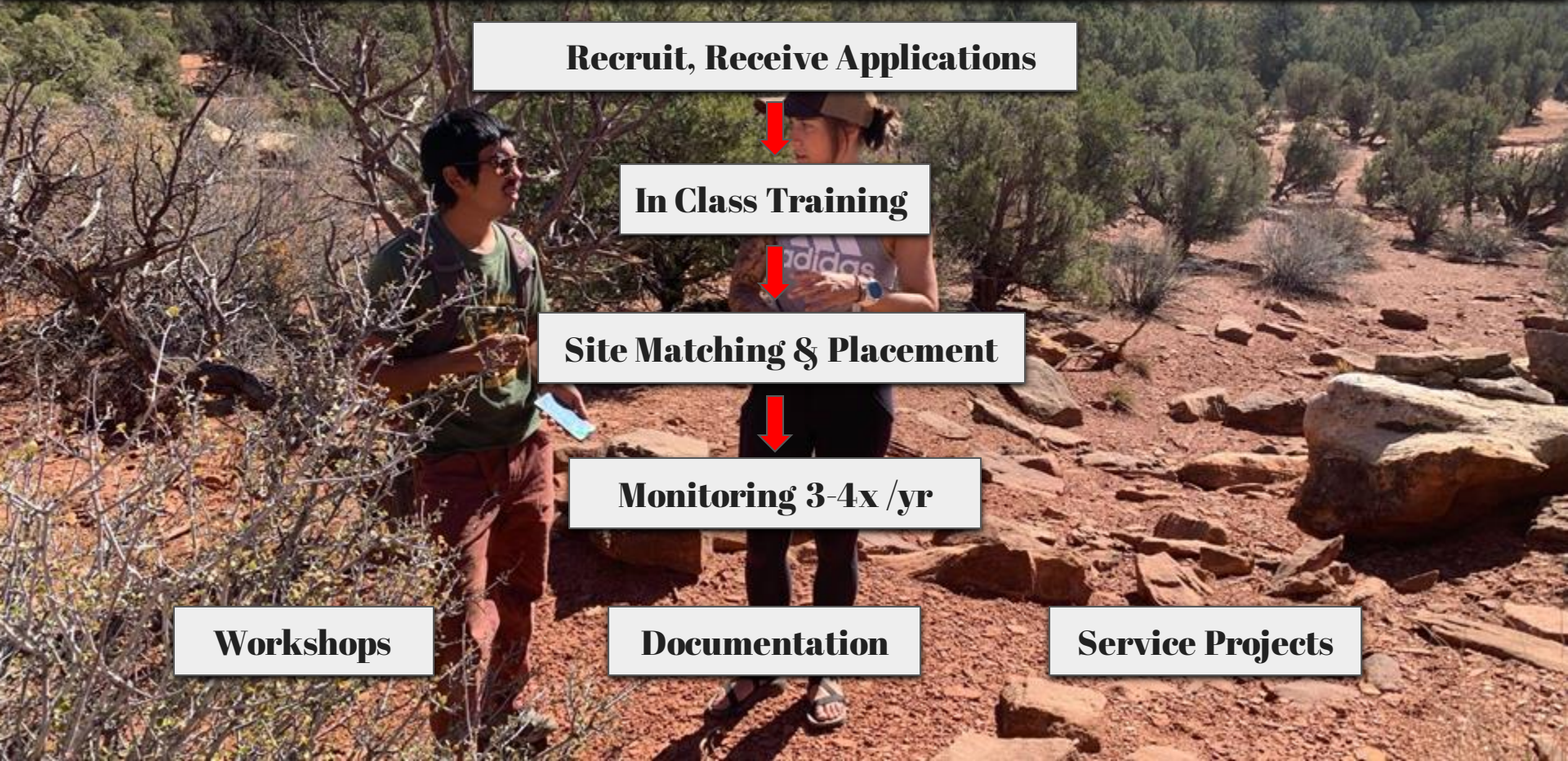


Monitoring 3-4x /yr

Workshops

Documentation

Service Projects



In Class Training



- **Site Etiquette**
- **The do's the don'ts (laws)**
- **Utah Archaeology 101**
- **Site types**
- **Common kinds of damages (human & environmental)**
- **Stewarding safety**
- **Ethics**
- **Common artifact types**

**BLM Law Enforcement Officer working
with Stewards Uintah County**



Support From Law Enforcement

**Ability
Level**

**Historical
Interest**

**Preferred
Counties**

**Type of
Vehicle**



Matching Stewards to a site

Recruitment & Applications



**BLM Archaeologist & Stewards -
Fillmore Field Office**



UTAH CULTURAL SITE
STEWARDSHIP

UCSS Steward Application

lmcarsen@utah.gov [Switch account](#)



The name and photo associated with your Google account will be recorded when you upload files and submit this form. Your email is not part of your response.

* Required

Contact Information

First Name *

Your answer

Release of Liability Agreement

Utah Statewide Cultural Site Stewardship Program

Release of Liability Agreement

In consideration of the risk of injury that exists while participating in the Utah Cultural Site Stewardship Program (hereinafter the "Activity"); and

In consideration of my desire to participate in said Activity and being given the right to participate in same;

I hereby, for myself, my heirs, executors, administrators, assigns, or personal representatives (hereinafter collectively, "Releasor," "I" or "me"), which terms shall also include Releasor's parents or guardian if releasor is under 18 years of age), knowingly and voluntarily enter into the waiver and Release of Liability and hereby waive any and all rights, claims or causes of action of any kind arising out of my participation in the Activity; and

I hereby release and forever discharge the Utah State Historic Preservation Office and other participating Land Management Agencies, Partners, affiliates, managers, members, agents, attorneys, staff, volunteers, heirs, representatives, predecessors, successors, and assigns (collectively "Releasees"), from any physician or psychological injury that I may suffer as a direct result of my participation in the aforementioned Activity.

I am voluntarily participating in the aforementioned Activity and I am participating in the Activity entirely at my own risk. I am aware of the risks associated with participating in this Activity which may include, but are not limited to: Physical or psychological injury, pain, suffering, illness, disfigurement, temporary or permanent disability (including paralysis), economic or emotional loss, and death. I understand that these injuries or outcomes may arise from my own or others' negligence, conditions related to travel to and from the Activity, or from conditions at the Activity location(s). Nonetheless, I assume all related risks, both known and unknown to me, of my participation in this Activity.

I further agree to indemnify, defend, and hold harmless the Releasees against any and all claims, suits or actions of any kind whatsoever for liability, damages, compensation or otherwise brought by me or anyone on my behalf, including attorney's fees and any related cost.

I further acknowledge that Releasees are not responsible for errors, omissions, acts or failures to act of any party or entity conducting a specific event or activity on behalf of the Releasees. I am aware and understand that I should carry my own health insurance.

I further acknowledge that this Activity may involve a test of a person's physical and mental limits and may carry with it the potential for death, serious injury, and property loss. I agree not to participate in the Activity unless I am medically able and properly trained, and I agree to abide by the decision of the Utah State Historic Preservation Office and all affiliates officials or agents, regarding my approval to participate in the Activity.

I hereby acknowledge that I have carefully read this "Waiver and Release" and fully understand that it is a release of liability. I expressly agree to release and discharge the Utah State Historic Preservation Office and all of its affiliates, managers, members, agents, attorneys, staff, volunteers, heirs, representatives, predecessors, successors, and assigns, from any and all claims or causes of action and I agree to voluntarily give up or waive any right that I otherwise have to bring a legal action against the Utah Division of State History for personal or property damage.

To the extent that statute or case law does not prohibit releases for ordinary negligence, this release is also for such negligence on the part of the Utah State Historic Preservation Office, its agents, employees, and partners.

Steward Signature:

Date:

Emergency Contact:

Emergency Contact:

Phone #

Phone #

Assumption of Risk Waiver

ASSUMPTION OF RISK, WAIVER OF LIABILITY, AND INDEMNIFICATION AGREEMENT

This Assumption of Risk, Waiver of Liability, and Indemnification Agreement ("Agreement") must be completed in order to participate and volunteer in the activities associated with the Utah Cultural Site Stewardship Program ("Program"). The Program is provided by the Utah State Historical Preservation Office (SHPO).

I am either the Participant named below or the parent and/or the legal guardian of the minor Participant named below. I am familiar with the Program and the Program activities. I understand that participation in the Program may include foreseeable and unforeseeable risks and other hazardous activities inherent in the Program, which may expose the participant to illness, injury, or death. Participant or parent/guardian freely and voluntarily participates or allows participation in the Program with the knowledge of the danger involved and hereby agrees to assume and accept any and all risk of injury or death.

Participant or parent/guardian of the Participant further understands and acknowledges that the Utah Historic Preservation Office (SHPO), the Utah Department of Heritage & Arts, the State of Utah, and other state and federal agencies on whose land Program activities may occur are not an insurer of Participant's behavior, actions or participation in the program, and therefore assume no liability whatsoever for personal injuries or property damages to Participant or to third persons arising out of participation in the Program activities.

Participant or parent/guardian of the Participant hereby agrees to release, waive, covenant not to sue, indemnify and hold harmless the Utah Historic Preservation Office (SHPO), the Utah Department of Heritage & Arts, the State of Utah, and other state and federal agencies on whose land Program activities may occur, and all of their officers, employees and agents from any and all liability, claims, demands, actions and causes of action whatsoever arising out of or related to any loss, damage, or injury, including death, that may be sustained by Participant or loss or damage to any property belonging to Participant arising out of or related to participation in the Program.

Participant or parent/guardian of the Participant agrees that the site of any lawsuit arising out of or related to participation in the Program shall be Utah and that this Agreement will be governed by and construed in accordance with the laws of the State of Utah, without application of any principles of choice of law. Participant does not have any medical conditions that would prevent participation in the Program. Participant has adequate health insurance to cover the costs of treatment in the event of an injury. Participant shall pay any attorney fees or costs incurred by SHPO in enforcing this Agreement.

I am signing this Agreement for myself as Participant. I acknowledge that I am eighteen (18) years of age and that I fully understand the terms of this Agreement. I also acknowledge that this Agreement shall bind my heirs and personal representatives.

Participant (print full name): _____

Signature of Participant _____

Date _____

OR

I am signing this Agreement on behalf of a minor Participant. I acknowledge that I am the Guardian/Parent of the Participant and that I fully understand the terms of this Agreement. I also acknowledge that these terms shall bind my heirs and personal representatives and the heirs and personal representatives of the Participant.

Participant (print full name): _____

Legal Guardian of Participant (print full name): _____

Signature of Legal Guardian and/or Parent of Participant _____

Date _____

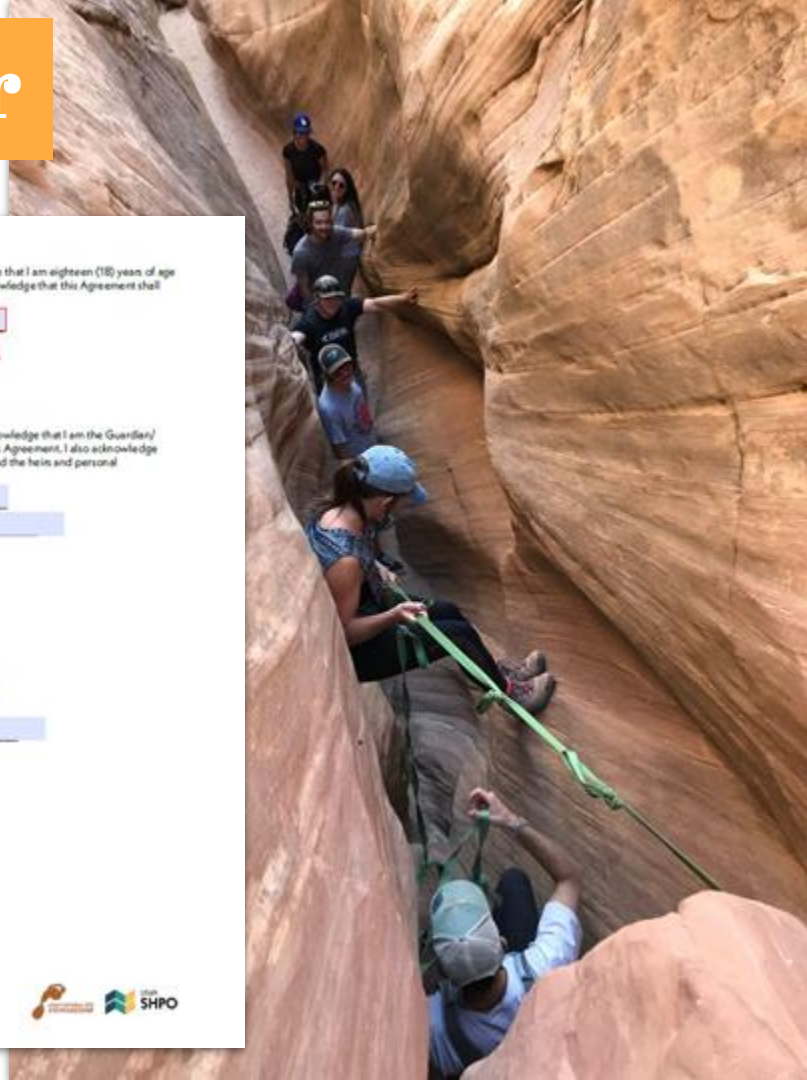
Participant's Insurance Information

Insurance Carrier _____

Insurance I.D. number (Group Number) _____

Insurance Phone Number _____

Insurance Mailing Address:



Code of Conduct

Utah Statewide Cultural Site Stewardship Program

Code of Conduct Agreement

I, _____ (print name), recognize and understand that heritage resources are fragile and irreplaceable and represent an important and integral part of our nation's heritage. As a site steward I am committed to the protection and preservation of prehistoric and historic heritage resources for the purposes of conservation, scientific study, public enjoyment, and for their significance to Native peoples and other associated groups.

By signing this document, I acknowledge that I have read and understand the following Code of Conduct and agree to abide by these standards as a participant in the Utah Cultural Site Stewardship program (UCSS). I agree to:

1. Comply with all federal, state, and local laws.
2. Comply with all agency and UCSS regulations and policies.
3. Treat the resources, public, and program partners with respect. Site Stewards are representatives of the Utah Cultural Site Stewardship program and must treat all users of public lands with respect. I will also respect state and private property adjoining public lands.
4. Follow Visit with Respect principles whenever I visit a heritage site.
5. Not engage in any activity that jeopardizes my safety, or the safety of others.
6. Not act in a law enforcement capacity or give the public the impression that I have law enforcement authority.
7. Keep all information regarding looting or vandalism confidential. Information about suspected violators of local, state, and federal laws will be disclosed only to the appropriate Law Enforcement Officers and agency archaeologist. I understand that I may be called upon to act as a sworn witness.
8. Monitor my assigned sites according to the schedule and submit monitoring reports within one week of a completed site visit.
9. Not lead public groups or tours to sites on public land unless I have written authorization from the managing agency.
10. Inform the UCSS Coordinator if I am contacted about participating in any press releases, announcements, or interviews. I will not participate in any press releases, media announcements, or interviews without prior authorization from the Coordinator.
11. In performing official duties, Steward may be granted access to confidential data, information, and records that are protected, private, and controlled under the Government Records Access Management Act (GRAMA). Steward may also have access to sensitive or confidential information that is protected by additional federal

statutes, federal regulations, Utah statute, Utah regulations, or ordinances of a Utah political subdivision ("Confidential Data").

A. Steward agrees to maintain and safeguard Confidential Data with protected restrictions as required under the Utah State Historic Preservation Office and the Utah Department of Community and Cultural Engagement policies and procedures, GRAMA, state statutes and regulations, and applicable federal statutes and regulations.

B. Steward understands the private nature of Confidential Data. Steward understands that receiving and having access to Confidential Data imposes special professional and ethical responsibilities. Steward is subject to state and federal penalties for unauthorized disclosure of Confidential Data, including but not limited to potential federal and/or state criminal penalties for disclosure of non-public information.

12. Refrain from posting photos, descriptions, or any other sensitive information on social media sites regardless of whether they are password protected or not.
13. Not remove artifacts or other paleontological or archaeological materials from state or federal lands for any purpose unless with prior authorization from the agency archaeologist. I will not engage in nor encourage the sale of artifacts or paleontological materials.
14. Not carry firearms or use ATP's during program activities.
15. Not misuse or misrepresent my participation in this program for personal gain to obtain access to sites, records or artifacts.
16. Violation of any of the provisions of this Code of Conduct Agreement constitutes grounds for disciplinary action, including termination from the Utah Cultural Site Stewardship Program.

I understand that the failure to abide by the above may be grounds for removal from the UCSS as well as termination and future denial of volunteer status with federal land-managing agencies.

Steward Signature _____ Date _____

Coordinator Signature _____ Date _____

Photographic Release

Utah Statewide Cultural Site Stewardship Program

Photographic Release

I, the Volunteer, do hereby grant and convey unto the Utah State Historic Preservation Office, all right, title and interest in any and all photographs and video or audio recordings of or including my image or voice, made by any of the Released Parties during my Activities with the Released Parties, including, but not limited to, the right to use such photographs or recordings for any purpose and to any royalties, proceeds or other benefits derived from them.

To express my understanding of and agreement with this Release, I sign here:

Full Name (the "Volunteer"):

Signature:

Address:

Date:

Event Date (if different):



Agency & Special Project Forms



OMB 0996-0080 v1
(Expires 12/31/2018)

VOLUNTEER SERVICE AGREEMENT—NATURAL & CULTURAL RESOURCES	
<input type="checkbox"/> INDIVIDUAL <input type="checkbox"/> GROUP	
1. NAME OF AGENCY	
2. NAME OF VOLUNTEER (First, Last)	
3. AGREEMENT #	
4. U.S. CITIZEN OR PERMANENT RESIDENT <input type="checkbox"/> Yes <input type="checkbox"/> No, US visa type	
5. NAME OF GROUP	
6. NAME OF GROUP CONTACT (First, Last)	
7. STREET ADDRESS	
8. CITY, STATE, ZIP CODE	
9. EMAIL ADDRESS	
10. PHONE Home: _____ Mobile: _____	
11. AGE <input type="checkbox"/> Under 35 <input type="checkbox"/> 35 – 44 <input type="checkbox"/> 45 – 54 <input type="checkbox"/> 55 and Older <input type="checkbox"/> 25 – 34 <input type="checkbox"/> 35 – 44	
12. ETHNICITY & RACE (Optional): Please report both ethnicity and race and tell us if you are a veteran or have a disability. Multiracial respondents may select two or more races. This information will inform our understanding of diversity and inclusion among the volunteers here in the natural and cultural resource areas.	
13. Ethnicity (Select one) <input type="checkbox"/> Hispanic or Latino <input type="checkbox"/> Not Hispanic or Latino	
14. Race (Select one or more, regardless of ethnicity) <input type="checkbox"/> American Indian or Alaskan Native <input type="checkbox"/> Asian <input type="checkbox"/> Black or African American <input type="checkbox"/> White <input type="checkbox"/> Native Hawaiian or Other Pacific Islander	
15. Are you a veteran? <input type="checkbox"/> Yes <input type="checkbox"/> No	
16. Do you have a disability? <input type="checkbox"/> Yes <input type="checkbox"/> No	
EMERGENCY CONTACT INFORMATION	
17. NAME (Last, First)	
18. PHONE Home: _____ Mobile: _____	
19. EMAIL ADDRESS	
20. STREET ADDRESS	
21. CITY, STATE, ZIP CODE	
GOVERNMENT OFFICIAL COMPLETES THIS SECTION	
22. AGENCY CONTACT NAME (Last, First)	
23. AGENCY CONTACT EMAIL & PHONE	
24. REIMBURSEMENTS APPROVED: <input type="checkbox"/> Yes <input type="checkbox"/> No Type and Rate of Reimbursement(s): _____	
25. VOLUNTEER POSITION/GROUP PROJECT TITLE:	
26. Description of service to be performed. Provide a brief abstract of volunteer or service activity and the location of the volunteer activity, and attach description of service to be performed. Service description should include details such as time and schedule commitment, use of government vehicle, use of personal equipment and/or vehicle, skills required (note certifications if necessary), level of physical activity required, etc. If this is a group agreement, the leader is to provide the group name and attach a complete list of group participants or optional form 3026 for each volunteer.	
VOLUNTEER/SERVICE ACTIVITY ABSTRACT	
27. Check all that apply: <input type="checkbox"/> Description of service attached <input type="checkbox"/> List of group participants/optional form 3026 attached <input type="checkbox"/> Job Hazard Analysis <input type="checkbox"/> Valid Driver's License Verified (if required)	

Volunteer Service Agreement OF301a USDA-USDA-DOC-000



Field Training

- **First site visit**
- **Meet Land Manager**
- **Establish baseline**
- **Review site info**
- **Survey123 app**
- **Ensure ability**
- **Questions**



16:11 5G

Stewardship Program Monitoring Form

- ▶ Vehicle Traffic
- ▶ Trash
- ▶ Camping and Camp Fires
- ▶ Woodcutting or Vegetation Removal
- ▶ Collector's Piles
- ▶ Digging
- ▶ Human Remains Exposed
- ▶ Suspected, Attempted, or Known Theft of Cultural Materials
- ▶ Vandalism, Graffiti, or Other Intentional Damage
- ▶ Structural Damage
- ▶ Natural Deterioration
- ▶ Other Damage

✓

What Stewards Are Looking For



Criteria of Change

No Change

Decrease of Damage

Increase Of Damage

Significant Increase



Survey123



8:47

Stewardship Program Monitoring Form

Site Condition


Change In Condition

Unchanged

- Unchanged
- Unknown
- Decrease
- Increase
- Significant Change

Site Overview Photo *

3 of 3



overview_photo-20210711-191353-panel-comp-d.jpg

Change In Condition General Comments

8:51

Stewardship Program Monitoring Form

Vandalism, Graffiti, or Other Intentional Damage

Vandalism Changes Since Last Visit

Significantly More Damage

Significantly More Damage Comments *

Comments and photos are required!


Notify Stewardship Coordinator ASAP

To the left of Panel A there is white sprayed on graffiti. The Panel is in good condition but the graffiti is very close and you can see it from Panel A.

Significantly More Damage Photos *

Comments and photos are required!

Notify Stewardship Coordinator ASAP



sig_vandal_phot-20210711-194138-graffiti to left of panel a.jpg

Site Condition

Change in Condition

Unchanged

Site Overview Photo



Cave entrance-20210701-154030.jpg



View NW above cave entry-20210701-154549.jpg



Barred Entry-20210701-155843.jpg



Site on Hillside-View S-20210701-163.jpg

Theft of Cultural Materials

No Suspected Theft

Vandalism, Graffiti, or Other Intentional Damage

Vandalism Changes Since Last Visit

Significantly More Damage

Significantly More Damage Comments

To the left of Panel A there is white sprayed on graffiti. The Panel is in good condition but the graffiti is very close and you can see it from Panel A.

Significantly More Damage Photos



sig_vandal_phot-20210711-194138-graffiti to left of panel a.jpg

Structural Damage

Structural Damage Changes Since Last Visit

Unchanged

Natural Deterioration

Natural Deterioration Changes Since Last Visit

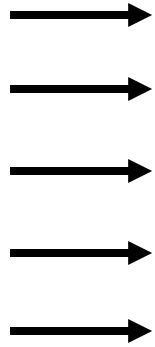
Unchanged

Data Management

SHPO



↓ **Marriott Data Storage** ↑



**Site Steward
using Survey123
for monitoring &
condition
assessment**

Annual & Quarterly Reporting

2022

Utah Cultural Site Stewardship Program

Annual Report



Browse Guard Station Service Project, Washington County

Number of Stewards on BLM Land	Number of Reported Damages	Total Stewarding Hours	Stewarding Mileage	Number of Events, Workshops, Training etc. within BLM Regions
185	5	271.75	3,175.50	3
				BLM Ranger and Field office Staff stewarding - Kanab
				BLM Ranger and Field office Staff stewarding - Pice
				Service project with Canyonlands Field Institute
BLM Sites with Stewards	Field Office/Parcel	Sites Visited	Hours by Field Office	
4218M5unging Bridge	BLM Price Field Office	"	Hours - Bears Ears NM Field Office	Yellow - Visited Sites
42022364	BLM Cedar City Field Office	"	Hours - Bears Ears NM Field Office	Red - Sites with Damages or Incidents
42023473	BLM Cedar City Field Office	"	Hours - Cedar City Field Office	
42023474	BLM Cedar City Field Office	"	Hours - Cedar City Field Office	
42023488	BLM Cedar City Field Office	"	Hours - Fillmore Field Office	
42023250	BLM Cedar City Field Office	"	Hours - Fillmore Field Office	
42024738	BLM Cedar City Field Office	"	Hours - Grand Staircase-Escalante NM Field Office	
42024391	BLM Cedar City Field Office	"	Hours - Kanab Field Office	
42024398	BLM Cedar City Field Office	"	Hours - Kanab Field Office	
42024986	BLM Cedar City Field Office	"	Hours - Moab Field Office	
42021743	BLM Salt Lake Field Office	"	Hours - Moab Field Office	
42020251	BLM Salt Lake Field Office	"	Hours - Moab Field Office	
42020529	BLM Salt Lake Field Office	"	Hours - Monticello Field Office	
42020629	BLM Salt Lake Field Office	"	Hours - Monticello Field Office	
42020547	BLM Salt Lake Field Office	"	Hours - Pice Field Office	
42021278	BLM Price Field Office	"	Hours - Salt Lake Field Office	
42020000	BLM Price Field Office	"	Hours - Salt Lake Field Office	
42020240	BLM Price Field Office	"	Hours - Salt Lake Field Office	
42020241	BLM Price Field Office	"	Hours - St. George Field Office	
42020228	BLM Price Field Office	"	Hours - St. George Field Office	
42020281	BLM Price Field Office	"	Hours - Vernal Field Office	
42020296	BLM Price Field Office	"	Hours - Vernal Field Office	
42028466	BLM Price Field Office	"	Hours - Vernal Field Office	
4202874	BLM Price Field Office	"	Hours - Vernal Field Office	
42028622	BLM Price Field Office	"		
42028624	BLM Price Field Office	"		
42028625	BLM Price Field Office	"		
42028628	BLM Price Field Office	"		

Utah Stewardship Regions & 2023 Goals



**Service project with BLM,
Canyonlands Field Institute & UCSS**

2023 Program Goals:

Steward Engagement and Communication

Rural Engagement and Outreach

Diversity of Site Type and Location

Continue to Build Partnerships

Increasing BLM Support



UCSS BLM Ranger Training Kanab Utah

BLM Ranger & Staff Make Great Stewards!



**Price BLM Field Office Ranger & Staff
Training March 2023**

Recruitment, Engagement, Retention

- Social activities
- Field trips
- Educational opportunities
- Workshops
- Service projects
- Yearly conference

**Development of a dedicated
support community!**



Support Development of UCSS Regional Coordinators



**Regional Coordinator
San Juan County**



**Regional Coordinator
Kane & Garfield Counties**



**Regional Coordinator
Washington & Iron Counties**

Workshops & Education Opportunities



Service Projects



Site Documentation



**BLM Stewards Juab County -
Fillmore Field Office**



Community Engagement & BLM Involvement

June 2022, Ride Back In Time





378 Posts 1,796 Followers 346 Following

Utah SHPO

Government organization
Utah State Historic Preservation Office works to preserve Utah's past!
We post updates on all things archeology, history, and culture [more](#)
linktr.ee/SHPOresources
300 S Rio Grande St, Salt Lake City, Utah

Edit Profile

Ad tools

Insights

Contact

Add shop



Upcoming...



Polls Q&A



Internships



T.C. Railroad



Stay Connected

STEWARDSHIP INSIDER FEBRUARY 2023



THE NEW YEAR IS IN FULL SWING

Hoody!

First things first, it's time to get your best friends, your family members, your neighbors, or even the next person you see walking down the street to become a Utah Site Steward. Our first training of 2023 is coming up in April and registration is open, but spots are limited. Use the link below to learn more and register.

For those of you that are already trained up, we have some cool workshops and events for you below. Keep scrolling to see what you can get on the calendar.

Not to spoil next month... but are you ready to find out what's in store for the 2023 Annual UCSS Stewardship Get-Together? We can hardly keep it a secret any longer! Be sure to continue receiving our newsletter to learn more.

UCSS Service Project at a Historic Mining Site

We are always disappointed to see evidence of looting and vandalism on all archaeological and cultural sites. However, we wanted to express gratitude for the incredible UCSS Stewards who braved the cold and snow to help secure this site until further steps can be taken for its long-term preservation.



READ MORE



YouTube

- Home
- Shorts
- Subscriptions
- Library
- History
- Your videos
- Watch later
- Your clips
- Show more



Utah State Historic Preservation Office

@utahshpo 411 subscribers 11 videos
We work to preserve Utah's past. On our channel you can find videos that...

HOME VIDEOS PLAYLISTS COMMUNITY CHANNELS ABOUT

Multiple playlists



Why Programs Like UCSS Matter



**Awareness &
Education**

**More Informed
Public**

**Community
Involvement**

**Greater
preservation**

**Knowledge
Gain**



Differing Viewpoints - We Want That!





UTAH CULTURAL SITE
STEWARDSHIP

**Thank
You!**

Ian Wright

iwright@utah.gov

Nicole Lohman

nlohman@blm.gov



U.S. Department of the Interior
Bureau of Land Management

Cedar City Recreation Site Business Plan





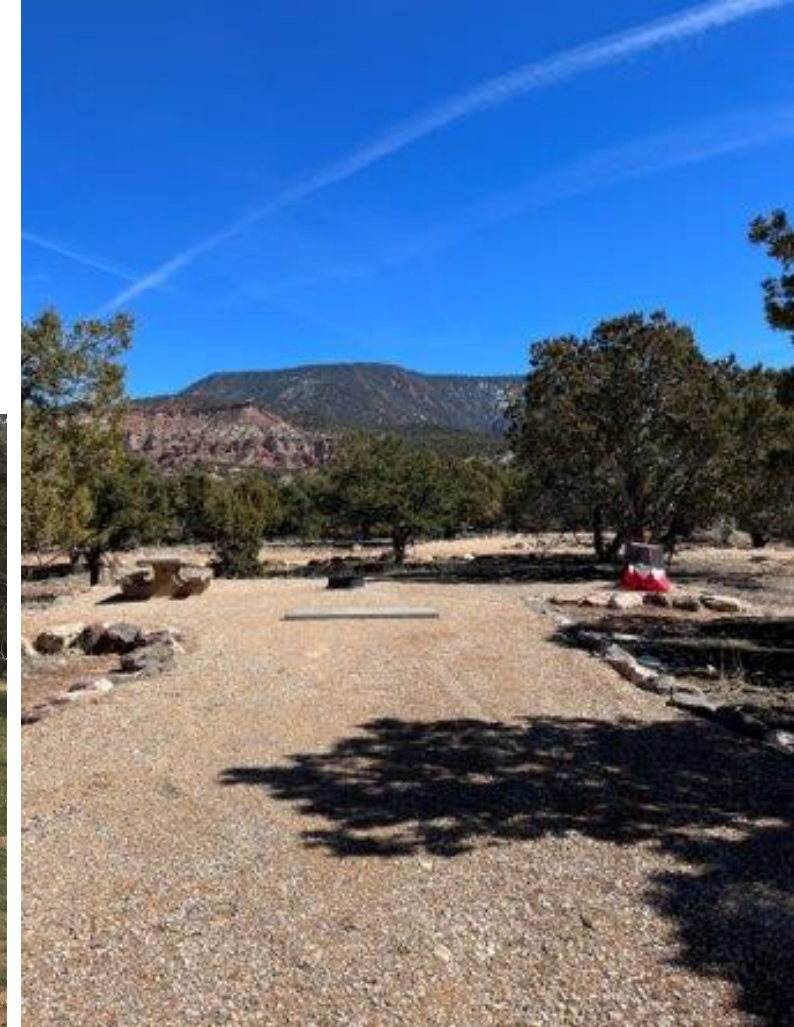
Pyramid Ridge Campground

Stats

- 13 individual campsites and 1 group site
- Operating at 70% capacity
- 1 year old

Proposed Fee Change

- Increase individual site fee from \$5 to \$12.
- Increase group site fee from \$20 to \$30 and, if a pavilion is installed, to \$40.





Rocky Peak Campground

Stats

- 10 individual campsites and 2 group sites
- Operating at 30% capacity
- Newly upgraded in 2022

Proposed Fee Change

- Increase individual site fee from \$5 to \$12.
- Eliminate reservations of the entire campground as a group site.
- Eliminate the pavilion reservation fee (pavilions are now part of the two group sites).





Hanging Rock Campground

Stats

- 6 individual campsites
- Went on Rec.gov April 2023
- Newly upgraded in 2022

Proposed Fee Change

- Eliminate day use fee and fee structure dependent on the size of the shade shelter.
- All campsites would be \$12.





Ranch Canyon Campsite

Stats

- 1 large group site
- Reserved two times a year

Fee Change

- Suspend fee structure until amenities are upgraded and, when campsite amenities are upgraded, implement a \$12 individual site fee and \$75 if a yurt is installed.





Future Campgrounds

Future Campgrounds

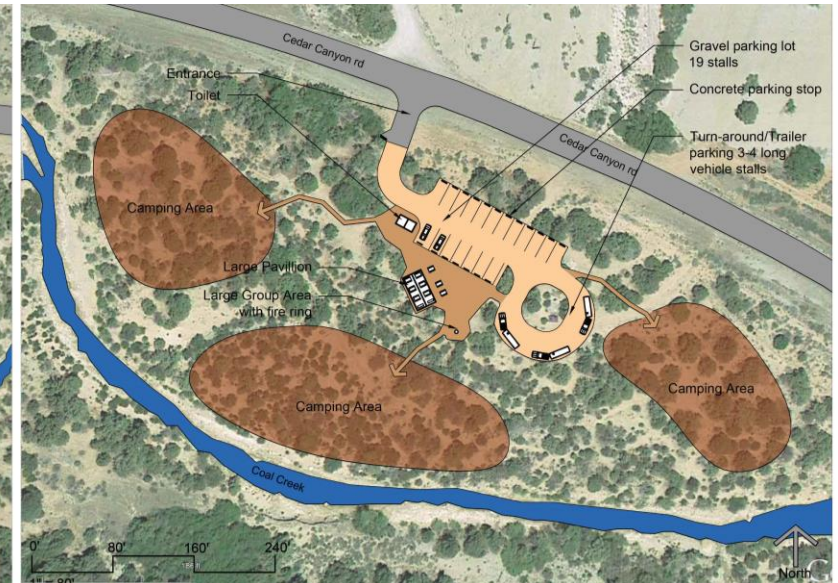
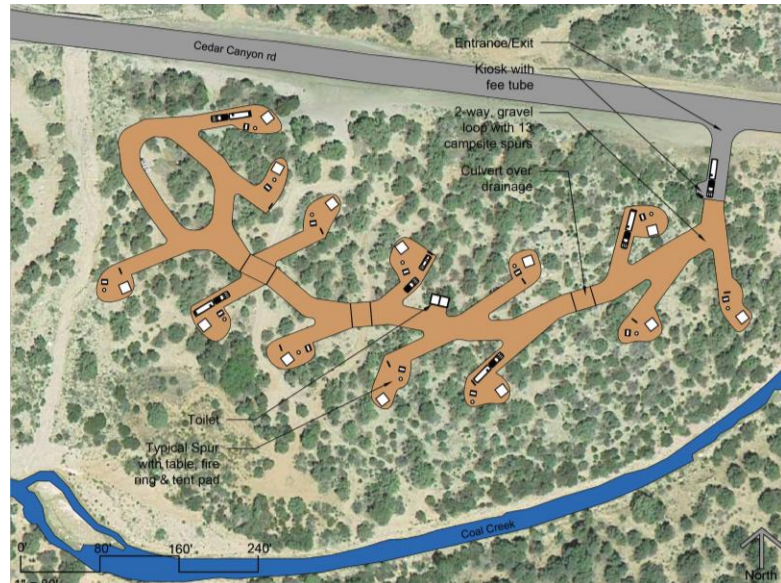
Coal Creek- NEPA to be completed in 2023

Bear Rock- NEPA completed design, work starting in 2023

South Creek- Outyear NEPA and design

Fee Change

- Increase individual site fee from \$5 to \$12.
- Increase group site fee from \$20 to \$30 and to \$40 if a pavilion is installed.





New No Minimum Use Fee Sites

New No Minimum Use Fee Site Trailheads

Mammoth Crossing-Existing

"C"- Existing

Spring Creek- Existing

"C" Overlook- Existing

Bone Hollow- Future



Spring Creek Trailhead



"C" Overlook Trailhead



Mammoth Crossing Trailhead



Three Peaks Paintball Complex-New

Three Peaks Paint Ball Complex- Existing, needs additional amenities before a fee can be implemented.

New Fee

\$2 per day, \$25 yearly pass and \$220 group use reservation.





Three Peaks Paintball Complex-New

Three Peaks Paint Ball Complex- Existing, needs additional amenities before a fee can be implemented.

New Fee

\$2 per day, \$25 yearly pass and \$220 group use reservation.





Current Revenue

Current Yearly Revenue- \$15,000

Current Yearly Net Revenue -\$42,000 (Net Loss)

Recreation Set Fee Site	Average Operating Cost Per Year	Yearly Average Revenue 2019-2022
Rocky Peak Campground	\$11,980	\$4,042
Ranch Canyon Campsite	\$600	\$10
Pyramid Ridge Campground	\$10,325	\$6,046
Hanging Rock Campground	\$3,200	\$0
Three Peaks RC Track	\$2,555	\$198
Three Peaks Model Port	\$1,415	\$247
No Minimum Use Fee sites	\$26,775	\$4,693
Total	\$56,850	\$15,236



Projected Revenue

Projected Yearly Revenue Current Sites and Increased Fees \$79,525

Projected Yearly Net Revenue of Current Sites \$22,675

Projected Yearly Revenue With Future Sites and Increased Fees Fully Operational \$125,475

Projected Yearly Net Revenue of Current and Future Sites Fully Operational \$43,150

	Projected Annual Revenue before operating costs	Current Annual Operating Cost Existing Site	Estimated Operating Cost of New Sites	Projected Annual Revenue after operating costs
Existing and future sites operational	\$125,475	\$56,850	\$25,000	\$43,150
Existing sites	\$79,525	\$56,850	0	\$22,675



Public Outreach

- Posted a link to the Modified Business Plan proposal on the appropriate blm.gov webpage(s)
- Shared the opportunity to comment on the Modified Business Plan on Facebook and Twitter
- Issued a news release to statewide print and broadcast media
- Posted the fee increase proposal at existing campgrounds and day use sites
- Posted notices on Recreation.gov
- Presented the Modified Business Plan to the Iron County Commission (completed on Dec. 12, 2022, with full support)
- Presented the Modified Business Plan to the Beaver County Commission (completed on February 7, 2023, with full support)



Public Comment

- **Social Media** - received three comments which were very brief and mostly supportive.
- **Desert News Article** -received a large amount of unofficial comments which were mostly un-supportive of raising fees.
- **Official Comments**- received nine official comments through email or a physically mailed letter.
 - Seven of the official comments were from the public:
 - Three were against and four were supportive.
 - Two of the official comments were from local and state governments:
 - Both Iron County and the State's, Public Lands Policy Coordinating Office were supportive and understanding of fee increases.



Fee Increase Pros and Cons

If Fee Is Not Increased

- ❖ Price Far Below Fair Market Value
- ❖ Insufficient Revenues
- ❖ Reduced Services
- ❖ Operation Subsidized by Tax Payers & Other Recreation Fees

If Fee Is Increased

- ❖ Still Lower Than Fair Market Price
- ❖ Sites Operational With **Net Income**
- ❖ Sustainable Services
- ❖ Funds Available for Site Enhancements



Cedar City BLM Request to the RRAC

Request RAC approval to implement amendments to business plan.

Existing Sites:

Rocky Peak Campground, Pyramid Ridge Campground
Hanging Rock Campground, Ranch Canyon Campsite

Future Sites:

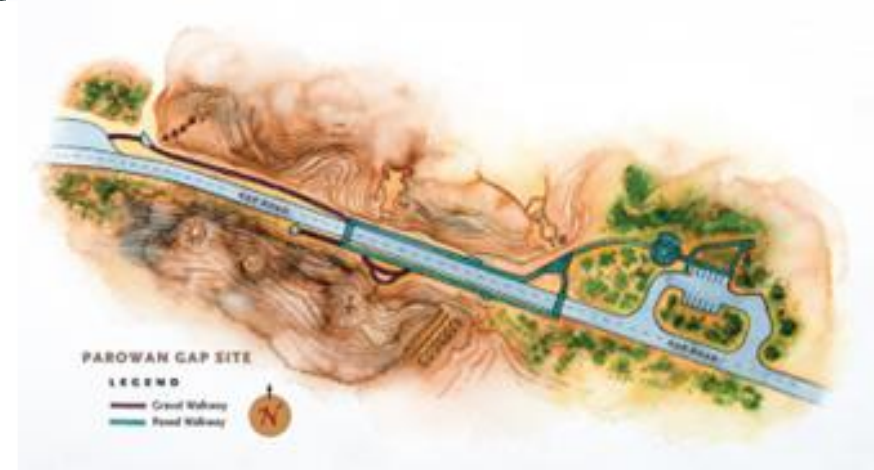
Coal Creek Campground, Bear Rock and South Creek Campground

New No Minimum Use Fee Sites:

Mammoth Crossing, "C", Spring Creek, Bone Hollow and "C" Overlook Trailheads.

New Fee Site:

Three Peaks Paint Ball Complex



Questions



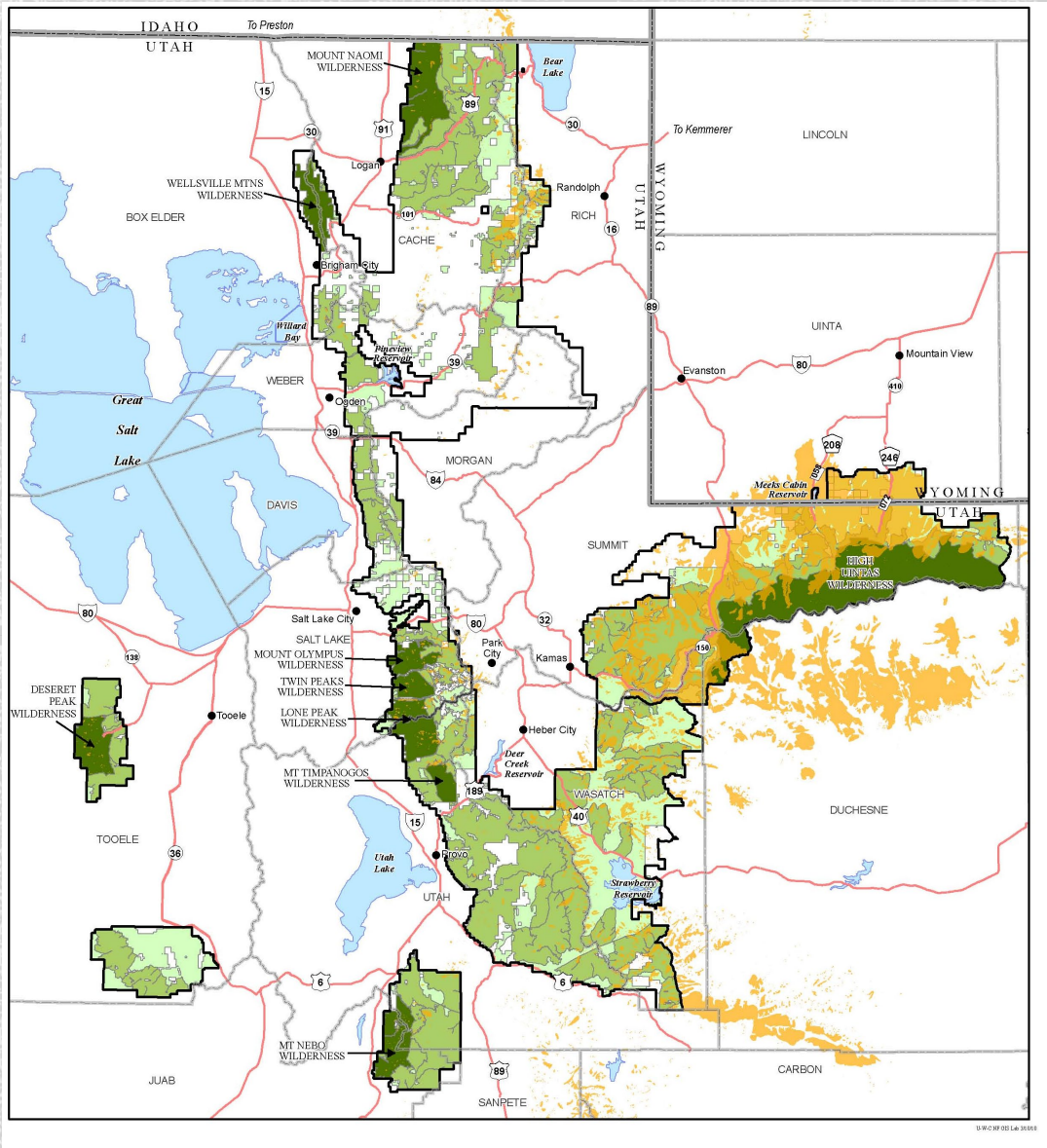
RECREATION FEE PROPOSAL - OUTREACH SUMMER 2022

**Uinta-Wasatch-Cache
National Forest**

(dated 2023.04.14 for May BLM RRAC)

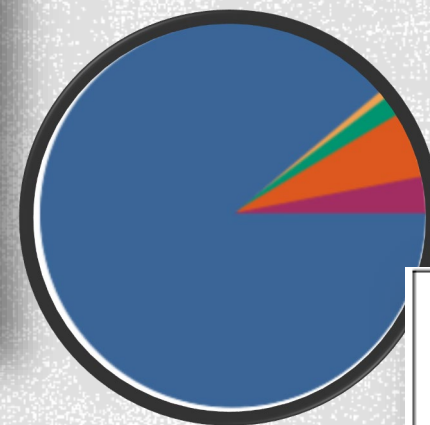


- Overview of the Forest
- Overview of Forest fee proposal
- Amenities required and used to help set fees
- Forest fee proposal by fee type (majority)
- Fees and Passes
- Where Do the Fees Go
- Public Engagement
- How comments changed the fee proposal
- Question/Comments?



UINTA-WASATCH-CACHE NATIONAL FOREST

Forest received 10,702,000 visitors per year



Recreation	88.9%
Use Bathroom	0.9%
Work or Commute	1.7%
Passing Through	5.4%
Some Other Reason	3.1%
Total:	100.0%



71 Day Use Sites



14 Campgrounds



2 Dump Stations (see Jan PPT)



14 Special Recreation Permit Sites (4 OHV and 10 winter trails)

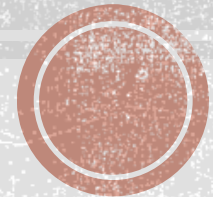


3 Group Sites (1 included in day-use site number above – See Jan PPT)



8 Cabin Rentals

OVERVIEW OF FEE PROPOSAL TOTAL OF 111 SITES



AMENITIES REQUIRED ONSITE

Standard Amenity Fee (SAF) Sites - Day Use

- Must have all amenities:
- Picnic Tables
 - Kiosk
 - Permanent Toilet
 - Designated Parking
 - Garbage Collection
 - Security

Expanded Amenity Fee (EAP) Sites - Campgrounds

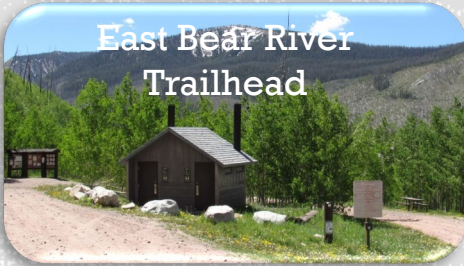
- Must have majority:
- Fee Tube
 - Picnic Tables
 - Tent Pads
 - Fire Ring
 - Garbage Collection
 - Kiosk
 - Vault Toilet
 - Gravel Road/Parking
 - Security

Special Recreation Permits (SRP)

- Fee Tube
- Kiosk
- Patrols
- Maintained OHV Trails
- Plowing Roads/Parking Areas
- Grooming Trails
- Safety Advisories
- Map for Trails
- Gravel Road/Parking
- Security



DAY USE FEES



Current Fees:

- 3-Day Pass \$6 per vehicle
- 7-Day Pass \$12 per vehicle
- Annual Pass \$45 per vehicle

Proposed Fees:

- 3-Day Pass \$10 per vehicle
- 7-Day Pass \$20 per vehicle
- Annual Pass \$60 per vehicle

Site Type	New Fees	Increased Fees	Change in Fee Structure/ Decrease	Fee Elimination	Removed from Proposal
Picnic Areas	3	9	3	0	1
Trailheads	23	19	0	3	3
Fishing Sites	0	5	6	1	0
Observation/ Interpretive Sites	2	1	0	0	1
Totals:	28	34	9	4	5

CAMPGROUND FEES



Current Fees:

- 3-Day Pass \$6 per vehicle
- 7-Day Pass \$12 per vehicle
- Annual Pass \$45 per vehicle



Proposed Fees:

- 3-Day Pass \$10 per vehicle
- 7-Day Pass \$20 per vehicle
- Annual Pass \$60 per vehicle

Site Type	New Fees	Increased Fees	Change in Fee Structure	Removed from Proposal
Campgrounds	8	6	0	0

RECREATION CABIN RENTALS

\$75 Cabins

Up to 6 people
Vault Toilet
Propane Lights/
Appliances
Propane Heat
Gravel Road

\$100 Cabins

Up to 6 people
Vault/Flush
Toilets
Running Water
Paved Road

\$125 Cabins

Up to 6 people
Shower
Kiosk
Paved Road with
Gravel Parking

\$150 Cabins

Up to 8 people
Electricity/
Modern
Appliances
Wood Stove

Site Type	New Fees	Increased Fees	Change in Fee Structure	Removed from Proposal
\$75 Cabins	2	0	0	0
\$100 Cabins	1	1	0	0
\$125 Cabins	1	1	0	0
\$150 Cabins	1	1	0	0

SPECIAL RECREATION PERMITS – OHV / WINTER TRAILS



North Slope OHV



Spring Canyon OHV



Lily Lake Trailhead



Tony Grove Trailhead

Current Fees:

- 3-Day Pass \$6 per vehicle
- 7-Day Pass \$12 per vehicle
- Annual Pass \$45 per vehicle

Proposed Fees:

- 3-Day Pass \$10 per vehicle
- 7-Day Pass \$20 per vehicle
- Annual Pass \$60 per vehicle

Site Type	New Fees	Increased Fees	Change in Fee Structure	Removed from Proposal
OHV Use	0	4	0	0
Site Type	New Fees	Increased Fees	Change in Fee Structure	Removed from Proposal
Winter Use	4	6	0	3

FEES AND PASSES

The following Forest Passes will be honored at most sites included in the Forest Fee Proposal:



The passes shown above will provide access to the following types of sites in this proposal:

Day Use Sites



Off Highway Vehicle trail systems



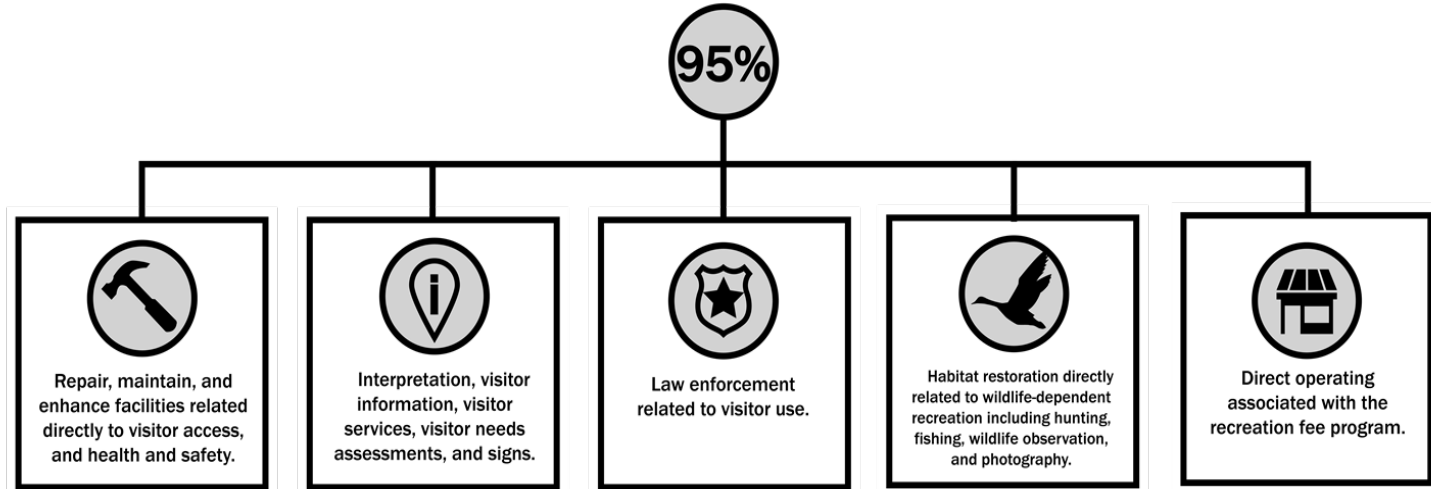
Winter Locations



Campgrounds



WHERE DOES THE FEE REVENUE GO?



PUBLIC INVOLVEMENT ACTIONS

Comment period July 7 to September 7, 2022

- Posted on Forest website
- Twitter message and Facebook posts
- Signs posted onsite
- News Release distributed to 68 media outlets
 - 3 Newspapers
 - 1 Radio Station
 - 2 TV Reports
- Federal Register Notice published August 5, 2022

15 Federal Legislators briefed on July 7 and August 25

21 State Elected Officials briefed on July 7

4 County Commissions briefed in July

4 Tribes were sent letters on October 10

3 Tabling Sessions at Big and Little Cottonwood Canyons

5 Public Open Houses across in August-September

Over 200 groups and partners contacted

Project Information

Submit a Comment

To submit a general comment please email:
SM.FS.UWCFeeProp@usda.gov

Note: Do not track your physical location if your browser prompts you to. If the map has zoomed to a different location than the project area, press the "Home" button to return to the project.

It's easy-

1. Select the Home button to see the full list of sites
2. Use the Filter list by map toggle to show only those sites that are in your current view

Sustainable Recrea



Project Information

Project Description:
The Uinta-Wasatch-Cache National Forest is interested in receiving your comments on recreation fee proposals.

You can submit your comments by using the interactive web map from the "Comment - Interactive Web Map" tab below.

Project Point of Contact: Uinta-Wasatch-Cache National Forest
Phone: 801-999-2103
Email: SM.FS.UWCFeeProp@usda.gov
Mailing Address:
Attention: Developed Recreation Site Fee Proposal
857 West South Jordan Parkway



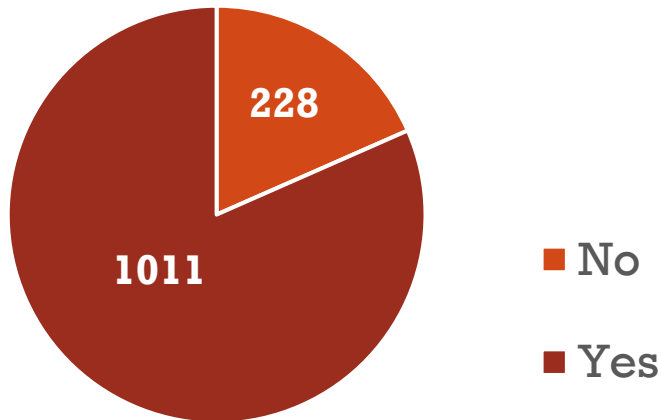
- BOX ELDER TRAILHEAD
- BUTTERFLY LAKE FISHING SITE
- CARD GUARD STATION
- CARDIFF FORK/MILL D NORTH TRAIL...
- CASCADE SPRINGS
- CAUSEY RESERVOIR PICNIC AREA
- CHICKEN CREEK EAST FISHING SITE
- CHICKEN CREEK WEST (JAKES BAY)...
- CHRISTMAS MEADOWS TRAILHEAD

VIRTUAL COMMENT MAP

OVERVIEW OF PUBLIC RESULTS

1,239 comments received
(Full comments in package)

Total Substantive Comment Count





Does the commenter support the recreation opportunity?



Is comment fee related?



What recreation opportunity was identified?



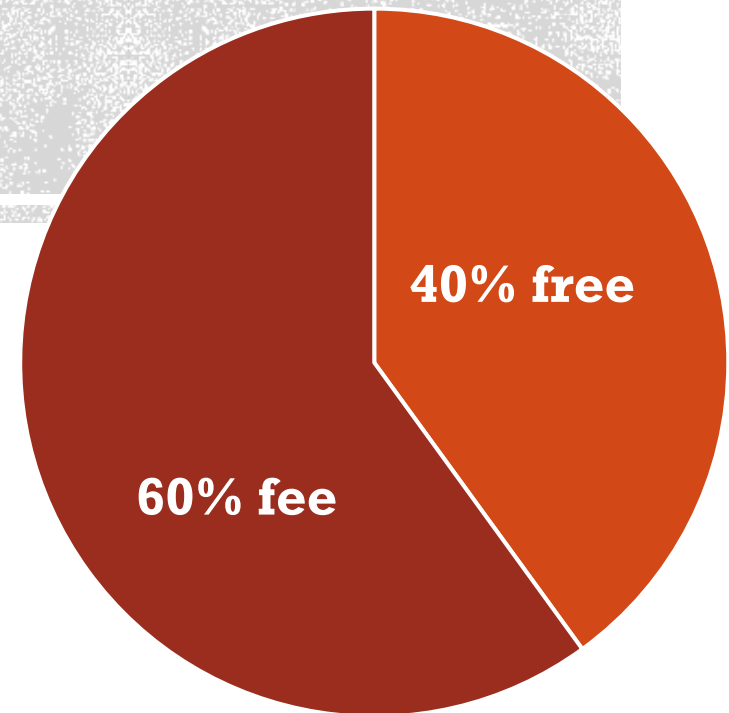
How does the comment relate to the way the Forest provides the recreation opportunity?

OVERVIEW OF PUBLIC RESULTS

Comments
evaluated by topics



CHANGES TO FEE PROPOSAL



CHANGES TO FEE PROPOSAL



Christmas Tree Meadows



Causey Reservoir

Day Use Sites Removed from Fee Proposal – will remain free

- Murray Farm Trailhead
- Granite Rock Trailhead
- Temple Quarry Trailhead
- Jenkins Flat Picnic Site
- Devil's Kitchen Interpretive Site
- **The revised proposal includes 71 day-use sites, including 5 that have charged a fee but will no longer charge a fee.**

Special Recreation Permits Removed from Fee Proposal – will remain free

- Co-op Winter
- Clyde Creek Winter
- Strawberry Winter
- **The revised proposal includes 14 Special Recreation Permit sites**

Campgrounds, Cabins, and Group Sites – no changes to fee proposal

- The proposal includes 8 cabins, 14 campgrounds, 2 group campgrounds, and 2 dump stations,



NATIONAL AND FOREST FEE FREE DAYS

The proposal includes 11 free days instead of five.

- Martin Luther King Jr. Day
- President's Day
- National Get Outdoors Day
- National Public Lands Day
- Veterans Day
- National Trails Day – Forest Free Day
- Great American Outdoors Act Day
- Earth Day – Forest Free Day
- National Volunteer Day – Forest Free Day
- Juneteenth – Forest Free Day
- National Day of Service – Forest Free Day

**What days
are fee free
days?**



VOLUNTEER PASS

Proposed way to earn a Forest Pass:

Forest Pass:	Current Hours:	Proposed Hours:	Age Group:
Annual	150 hours	40 hours	18 years or older + Family
Interagency Volunteer Pass	250 hours	250 hours	

Ruth Lake



The Forest manages 472 developed recreation sites. Currently, 235 of developed sites are managed without user fees on the Forest. If proposed changes in this fee proposal are implemented, 40 percent of the sites would remain non-fee.



QUESTIONS...

A set of five stylized tree icons in white, arranged horizontally. From left to right: a conifer, a deciduous tree with a circular canopy, a tall conifer, a deciduous tree with a triangular canopy, and a stylized tree with a circular canopy and a central trunk.

SEE YOUR
SOMEWHERE
NATIONAL FOREST WEEK™

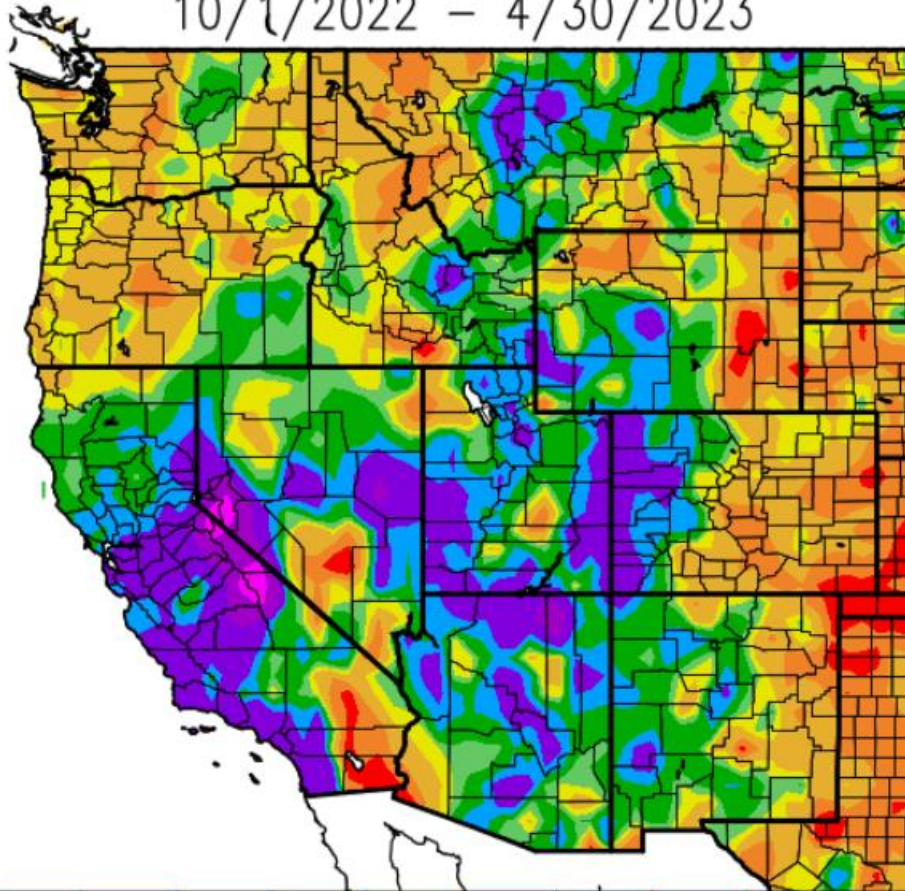


2023 Utah Fire Outlook



Precipitation: Since Oct 1, 2022

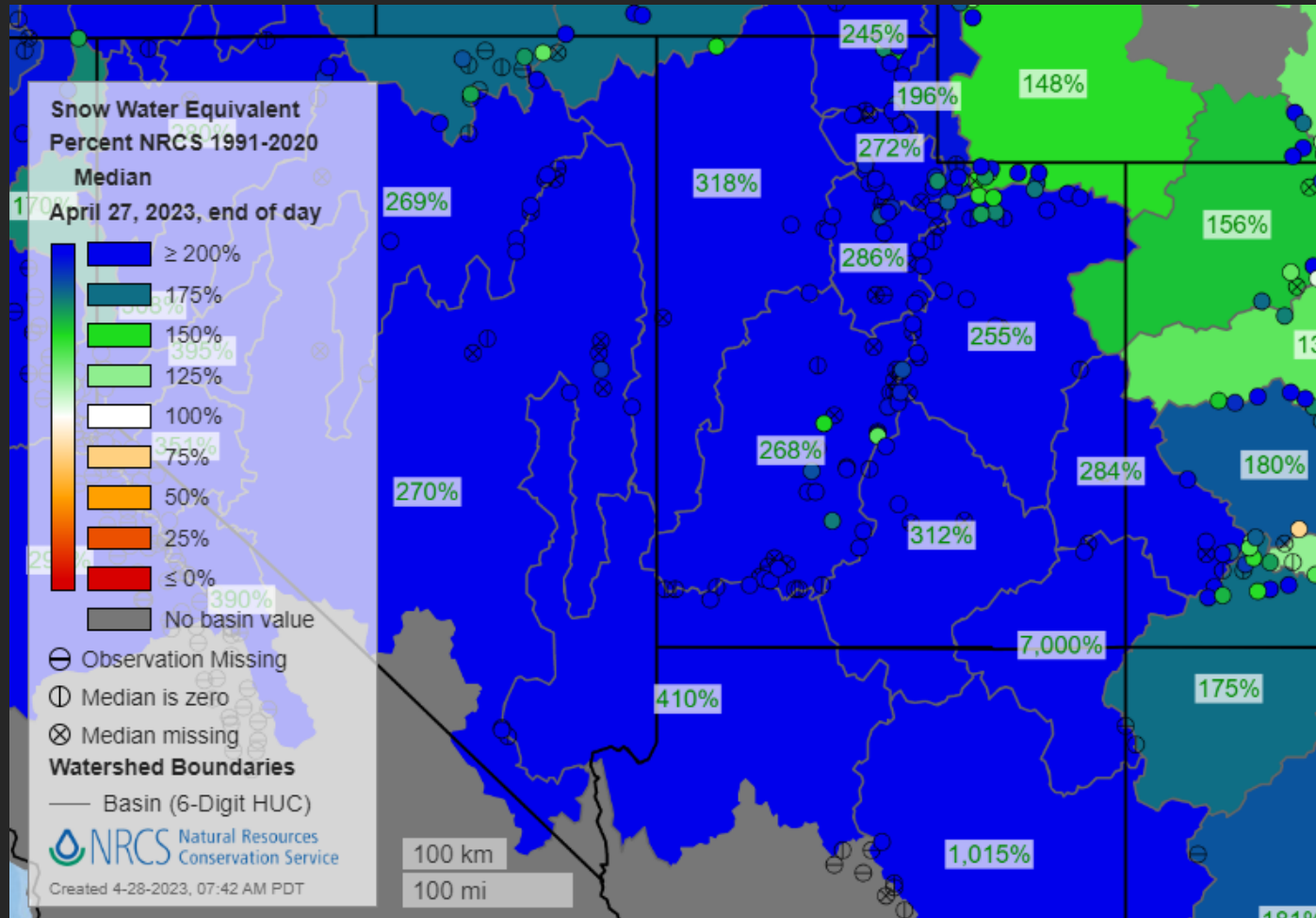
Percent of Average Precipitation (%)
10/1/2022 – 4/30/2023



- Well above normal precipitation since October for nearly all of Utah.

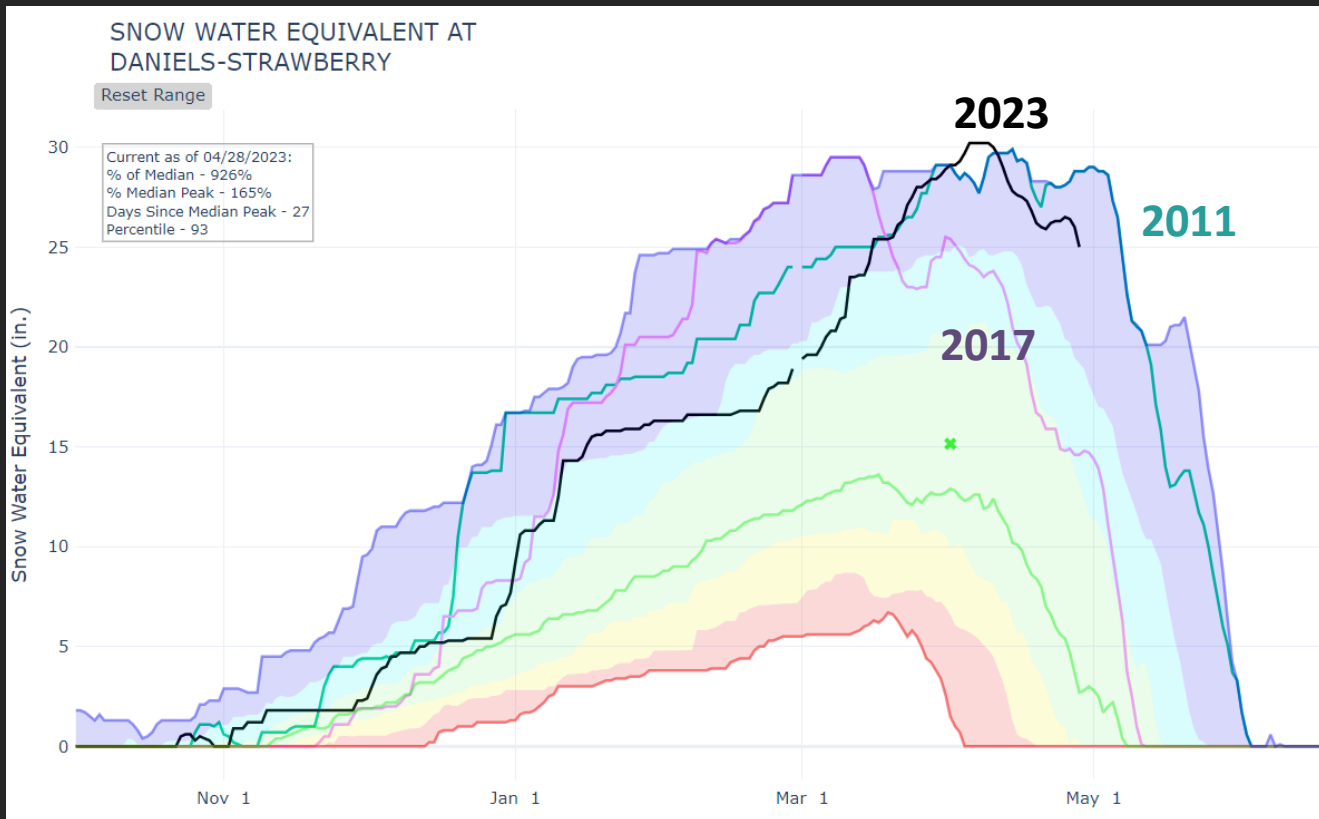
Generated 5/ 1/2023 at WRCC using provisional data.
NOAA Regional Climate Centers

Current Snowpack



- Current Utah Snowpack 200-300+% of normal

Snowpack Comparisons – Northern Utah



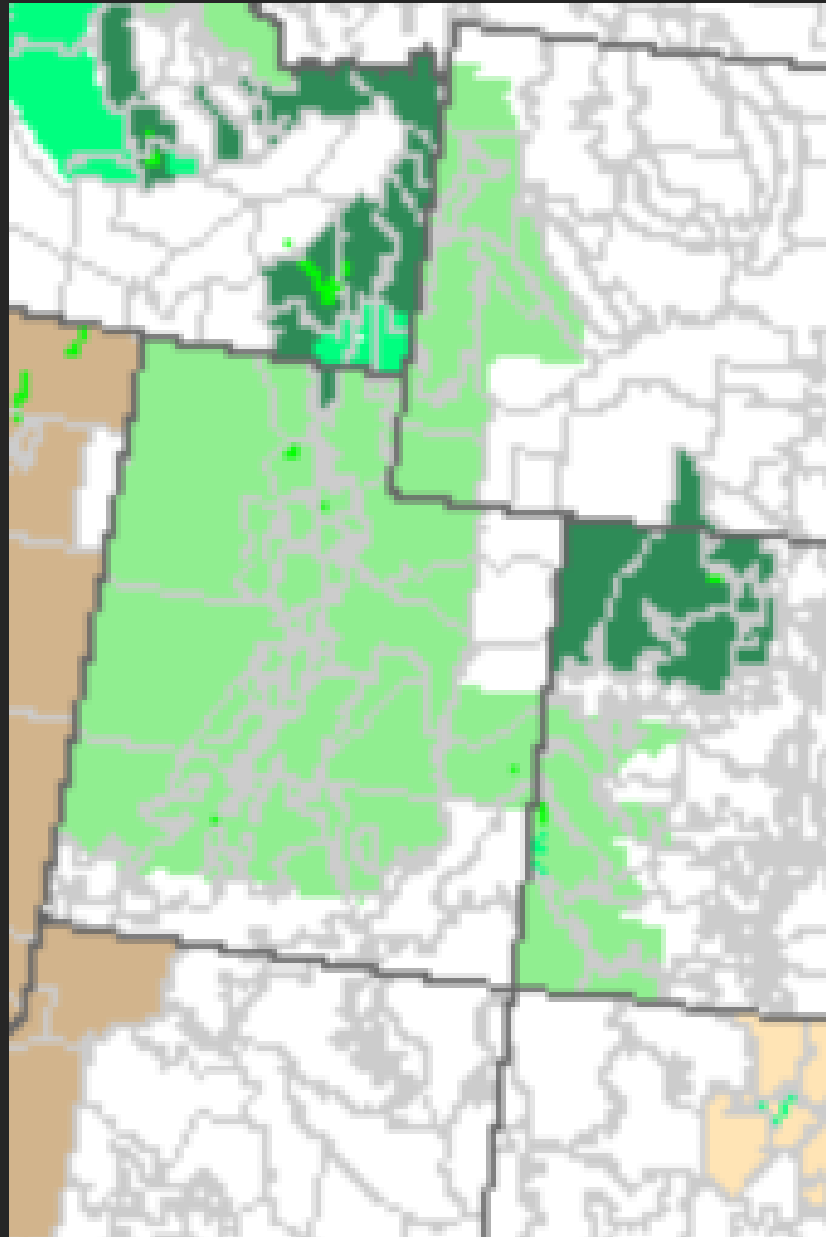
2023 – Black Line
2017 – Light Purple Line
2011 – Teal Line

Blue Line – Max Line
Green Line – Average
Red Line – Minimum

- 2023 Northern Utah snowpack is comparable to snowpack from 2011 and 2017.
- Although 2017 peaked earlier in March with snowpack, while 2011 had the late peak in April comparable to this year.
- There is potential based on snowpack comparisons to have above normal fire potential in southwest and northern Utah in the lower elevations, but the spring melt-off and monsoon timing will be the determining factors.

Flood Potential

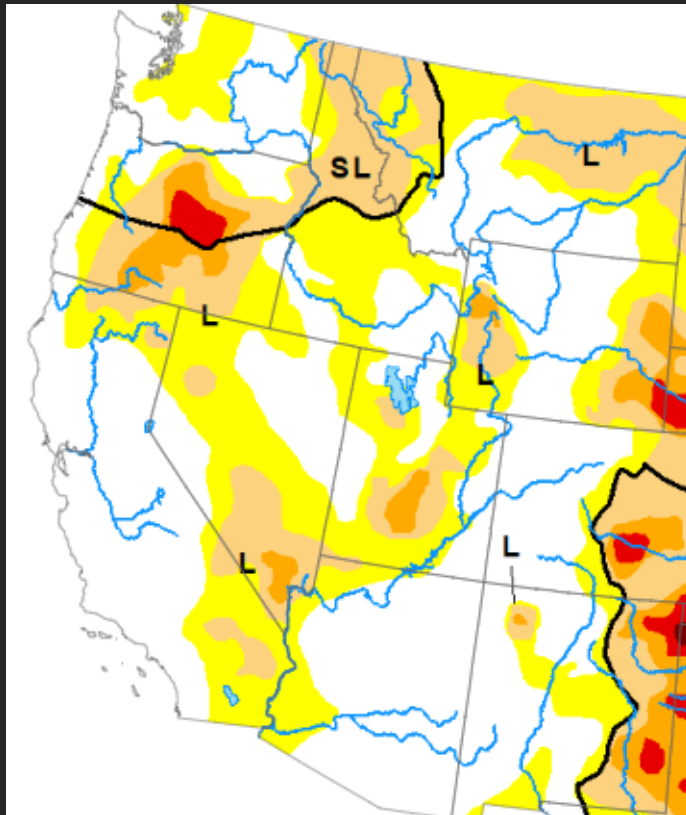
- Rivers, creeks and stream flooding possible on and off through May, depending on temperatures and precipitation and its effect on snowmelt.
- Monitor National Weather Service for updated information on which areas are at the greatest risk through the spring.



Drought Monitor and Outlook

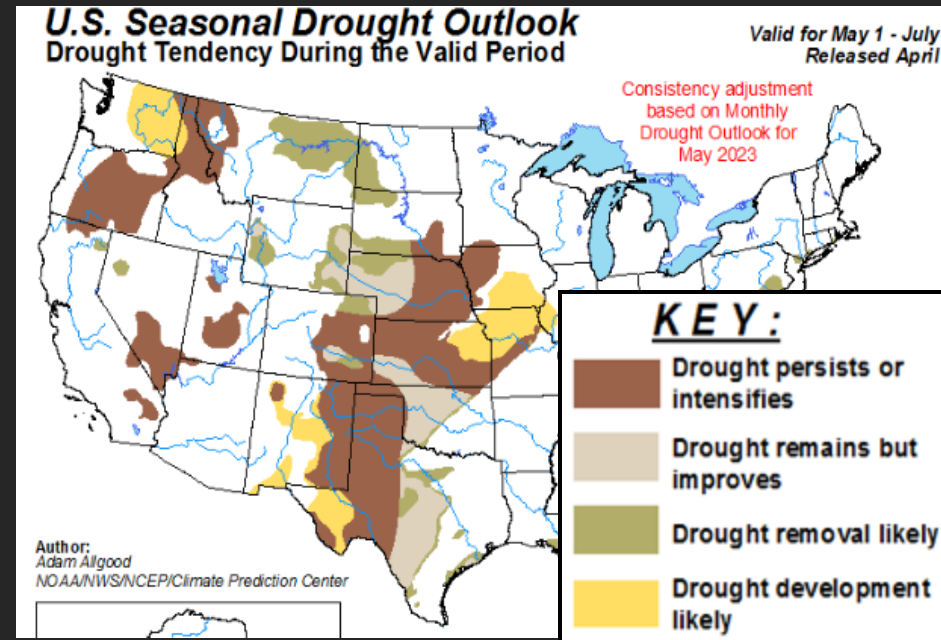
Drought Monitor

April 25th, 2023



Drought Outlook

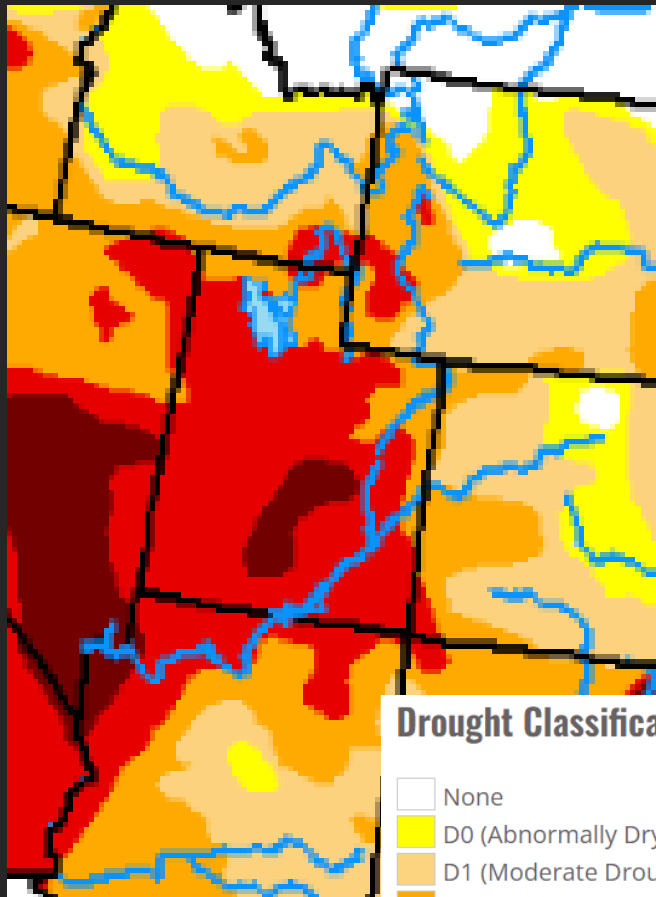
May 1st – July 31st, 2023



- Drought is ongoing in Utah but has improved significantly since last year with wetter conditions the last 6+ months.
- Drought will likely remain or improve slightly heading into fire season.

Drought Changes Since 2022

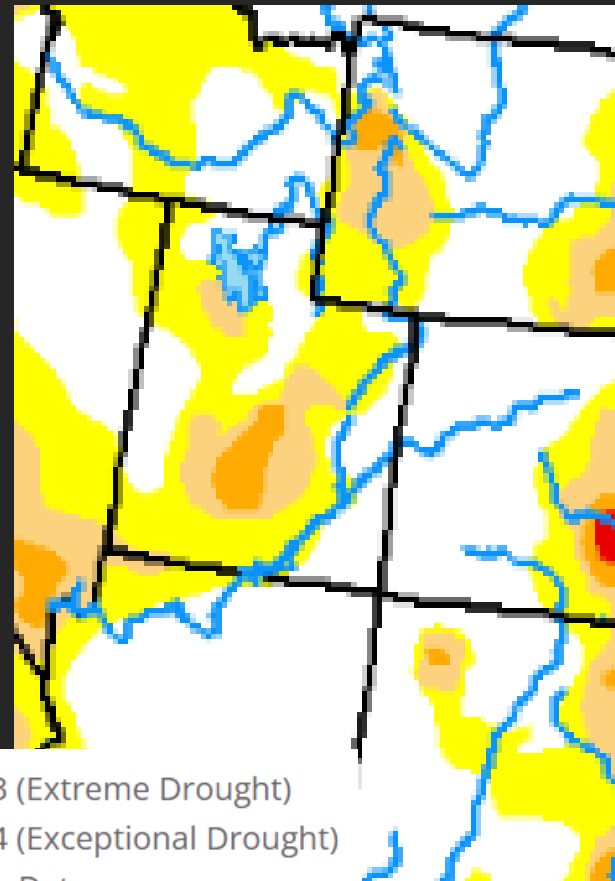
July 22, 2022



Drought Classification

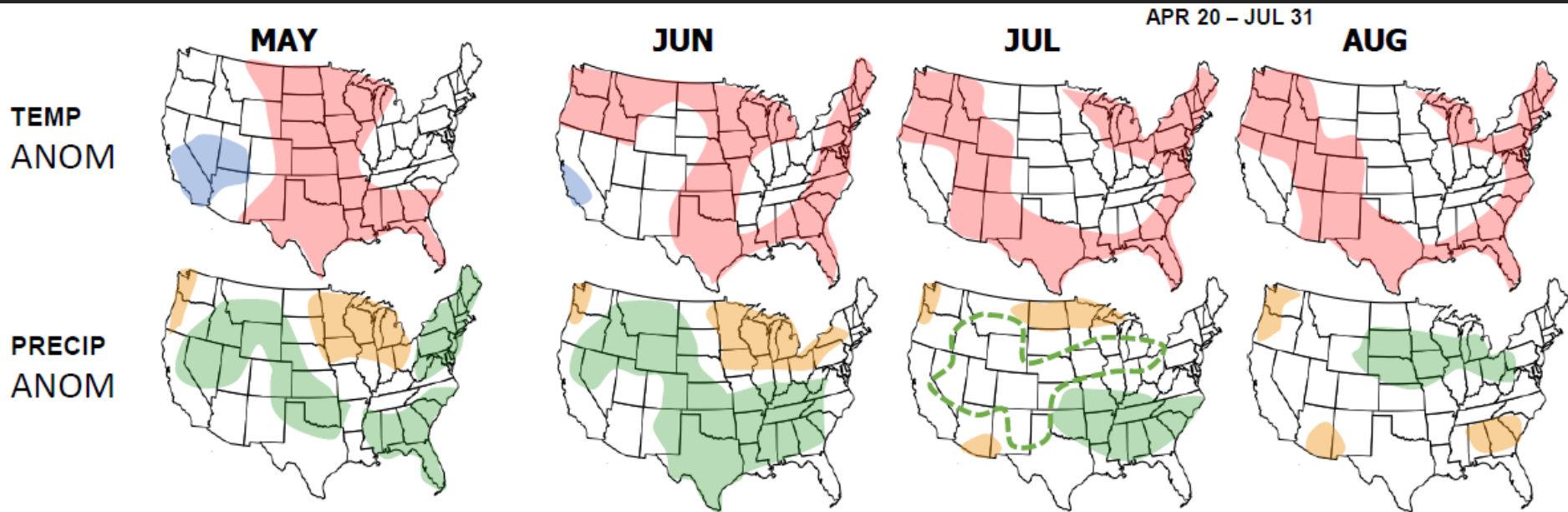
- None
- D0 (Abnormally Dry)
- D1 (Moderate Drought)
- D2 (Severe Drought)

April 25, 2023



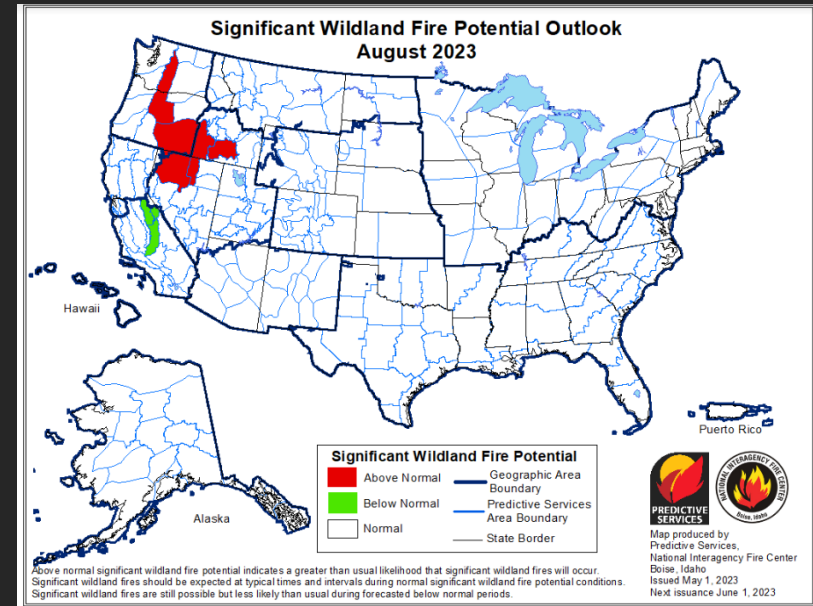
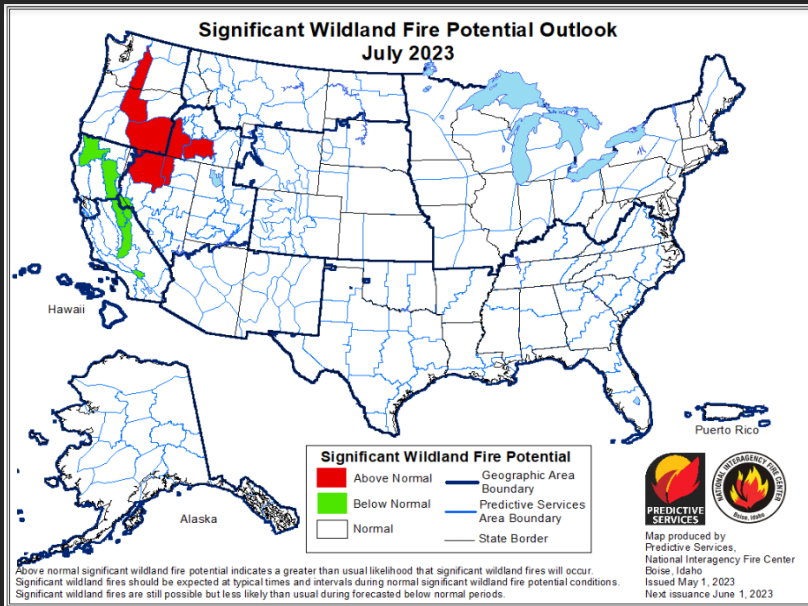
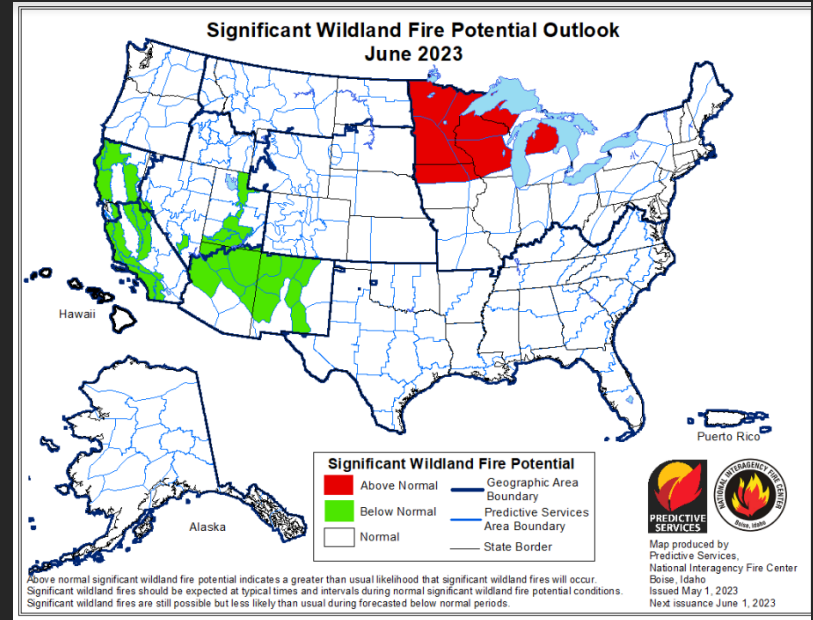
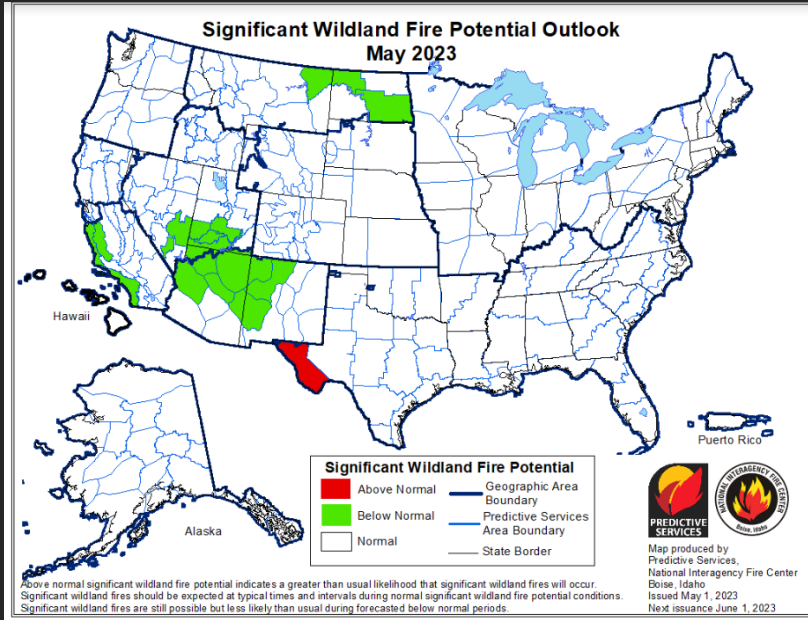
- D3 (Extreme Drought)
- D4 (Exceptional Drought)
- No Data

PS 4-Month Outlook: May – August 2023



- Storms will still bring some periods of precipitation to southern Utah even through May and June at times, but more showery and not as heavy as the winter precipitation.
- Heavy snowpack will take time to melt off, depending on the degree of warming.
- Periods of high streams/rivers/urban flooding certainly a threat heading through May.
- There is potential for the monsoon to be delayed or weaker due to a more active weather pattern in May/June not allowing the needed 4-corners high pressure ridge to set up. This could allow fire season to be more active in July and August than normal.

May – August 2023





U.S. Department of the Interior
Bureau of Land Management

Bipartisan Infrastructure Law - BLM Utah





The Bipartisan Infrastructure Law (BIL) was signed by President Biden on November 15, 2021

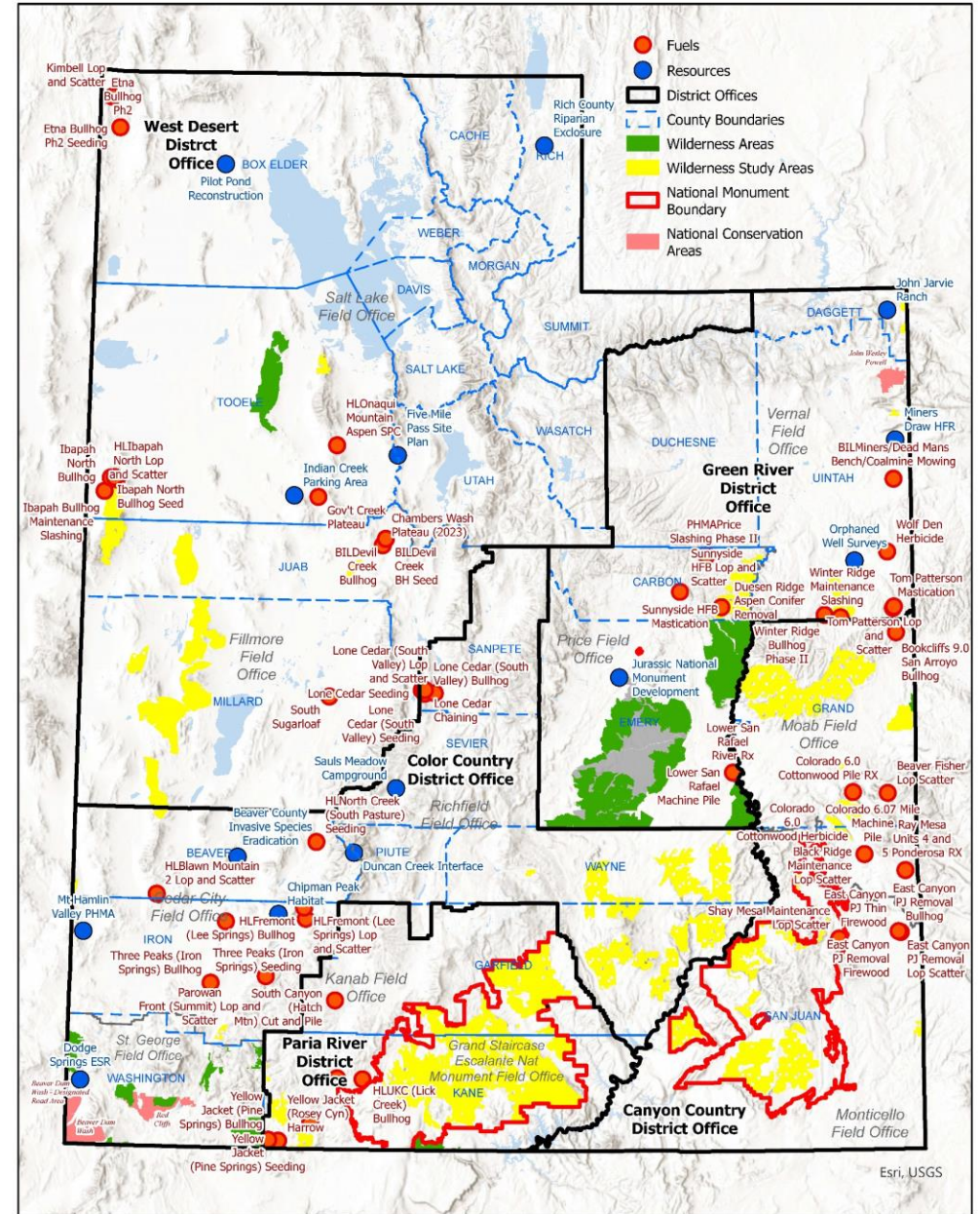
- It provides funds for fiscal years 2022 through 2026 related to the BLM mission for :
 - Ecosystem Restoration
 - Wildfire Resilience
 - Orphan well clean-up
- It aligns with and is leveraged by funding from the Inflation Reduction Act, Great American Outdoors Act, and annual appropriations.



BIL-funded projects are located throughout Utah

Ecosystem Restoration projects (including orphan wells) are identified by **blue dots**

Fuels and fire remediation projects are identified by **red dots**



No warranty is made by the Bureau of Land Management as to the accuracy, reliability, or completeness of these data for individual use or aggregate use with other data.



BIL- Funded Projects Throughout Utah

Canyon Country District

Grand County – Orphan well clean up

Color Country District

Sevier County – Sauls Meadow Resilient Recreation

Beaver County – Mesic Meadow Development and Invasive Species Eradication

Iron County – Bald Hills Priority Habitat Management Area and Riparian Improvements

West Desert District

Rich County – Riparian Grazing Exclosure

Tooele County – Fivemile Pass Recreation Improvements

Box Elder County – Pilot Pond Reconstruction

Green River District

Daggett County – John Jarvie Historic Ranch Active Walking Path

Emery County – Jurassic National Monument Visitor Improvements

Wildfire Fuels and Seeding Projects:

Box Elder, Tooele, Juab, Millard, Sanpete, Beaver, Iron, Garfield, Kane, Uintah, Carbon, Emery, Grand, and San Juan counties



Ecosystem Restoration

Funding for restoration projects

- Provides better and more resilient recreation sites
- Increases native vegetation and controls invasive species
- Implements collaborative landscape-scale restoration efforts
- Mitigates environmental hazards



Sauls Meadow Campground

Sevier County

- The area around Sauls Meadow has been used by families for generations.
- As the population has grown and OHV and mountain bike use has increased, there has been pressure on the resources and increased demand for amenities to protect the resources and enhance the recreational experience



Early 1900s off-highway vehicles



1930 Annabella outing



Sauls Meadow Campground

Sevier County

- The Sauls Meadow Campground will provide a large group site and individual camping sites within Sevier County.
- Off-Highway Vehicle/Equestrian Staging Area
- Large group pavilion, fire rings, disc golf course
- Two picnic structures adjacent to the Gunnison Reservoir and a BLM-managed mountain bike system.
- The picnic structures have been completed and have been used and enjoyed by participants in two successful mountain bike races.
- Additional work planned for Spring pending good weather and melted snow.



Riparian Grazing Exclosures Rich County

- The Salt Lake Field Office is completing maintenance and repair on more than 27 miles of riparian exclosures.
- The exclosures have deteriorated, and are needed to protect the Bonneville cutthroat trout and other aquatic species in creeks within the Three Creeks allotment.
- Supports grazing management changes to improve rangeland health, riparian habitat, and Sage Grouse brood-rearing/summer habitat conditions.



Fivemile Pass Recreation Area Tooele County

- Engineering site designs for OHV parking/staging areas, Beginner OHV Course/Ride Area, and Equestrian Trails. Site rehabilitation.
- Project **mitigates impacts** to other sensitive public lands by reducing pressure for use of unplanned and unimproved trail use and **increases recreation access** by providing designed and hardened access points and information areas.
- Private, state, and Federal lands (good neighbor)





Pilot Pond Reconstruction

Box Elder County



BLM Utah is cooperating with the Utah Watershed Restoration Initiative in Box Elder county to restore aquatic habitat by rebuilding a pond that provides habitat for an isolated population of the Least Chub and water for livestock and wildlife, while preventing livestock and wildlife entrapment.

Jurassic National Monument Emery County

Complete trail maintenance

- To increase visitor safety and enjoyment and the continual sustainability of the Rock and Rim walks, trails will be widened, and drainage improved.



John Jarvie Historic Ranch

Active Walking Path

Daggett County



- Walking path connecting the Indian Crossing Campground, the John Jarvie Historic Ranch, and the Bridge Hollow Campground along the Green River
- Includes gravel pathway with interpretive signs and park benches located at regular intervals to provide information about the history and ecology of the area.
- Would allow larger groups to access and enjoy the site at one time by giving visitors the option to spread out.
- Mitigates impacts to other sensitive public lands by reducing pressure for non-planned trail use and increases recreational access by providing additional links between the area's recreation sites.

Invasive Species Eradication Bald Hills Priority Habitat Management Area Beaver County

- The Cedar City Field Office proposes to treat noxious weeds, including Scotch thistle, Russian knapweed, houndstongue, and tamarisk, on public lands within Iron and Beaver Counties.
- Overlaps with the Iron County and Beaver County Cooperative Weed Management Areas (CWMA).
- NEPA is completed, and the project is implementable in FY 2023 (between May and August 2023).



Hamlin Valley Priority Habitat Iron County

- Approximately 1,376 acres of BLM-managed lands will have Pinyon pine and Juniper removed from Sagebrush community, vital winter/summer/brood-rearing Sage grouse habitat.





Escalante Desert-Sevier Lake Watershed

Beaver and Iron Counties

Recently funded project in fiscal year 2023 - \$650,000

- \$150,000 for 25,000 tublings of Wyoming Big Sagebrush (tubling) to be planted (Cedar City Field Office). Funding will be used to contract with a Nursery to raise sagebrush tublings for Fall and Spring 2023 planting.
- \$100,000 to leverage existing Assistance Agreement with Utah Conservation Corps (Utah State University) to improve stream structures and remove tamarisk, a noxious weed.
- \$100,000 for materials and construction of exclosures to protect riparian resources
- \$200,000 for a range improvement project
 - 31 miles of pipeline
 - 10 troughs
 - 20 cattle guards
- \$100,000 for mesic meadow development throughout the Bald Hills Priority Habitat Management Area. Existing Assistance Agreement with Utah Conservation Corps (Utah State University).



\$2.3 million in BIL funds went to orphan well contracts for fiscal years 2022 and 2023.

- BLM plugged 11 wells in 2022 and second contract started in May for an additional 11 wells that will be completed by June of this year, a total of 22.
 - 17 of the wells are in Grand County,
 - 1 well in Summit County, and
 - 4 wells in Carbon county.

Orphan Well Clean Up





BIL – Taking Care of the Firefighter

- **Pay for Firefighters**
 - In 2022, BLM was allocated \$37.7 million for Workforce Reform that included Special Pay Supplements of \$20,000 per year, or 50% of base salary (whichever is less) per firefighter, until the money is exhausted – Expected to expire by October 2023
 - All employees that were in a Primary or Secondary covered fire position received the Special Pay Supplements
 - Nationally this covered over 2,400 employees, covered over 200+ Utah firefighters
 - Conversions of Seasonal Employees to Career Seasonal and Career Seasonal to Permanent Full Time
- **Joint Mental Health Program**
 - Established a joint DOI-USFS program that will address mental health needs, including PTSD and suicide prevention for permanent, temporary, seasonal employees
 - \$20 Million total - \$10 million for USFS and \$10 million for DOI
 - Kick-off summit was in Boise, Idaho, in April 2023
- **New Firefighter Series**
 - Provides a new occupational series to be created that covers positions for which the primary duties involve the prevention, control, suppression, or management of wildland fires (GS-0456)
 - GS-03 through GS-15 – PD developed – Waiting on OPM standards to implement
- **FY24 Presidents Budget and Legislation – Non-BIL**
 - Special base rate salary table for firefighters (36% increase for GS-3, decrease by 3% for each grade increase to GS-15)
 - Portal to Portal Pay (15 hours coded and 9 hours at 50% standby pay)



Wildfire Resilience - Fuels and Revegetation

Throughout Utah

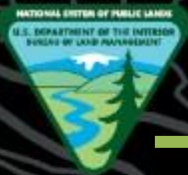
- **Nationally**
 - BLM's initial allocation for Fuels Management was \$38.2 million and the legislation provides for \$878 million over 5 years
- **BLM Utah**
 - FY23 Utah has 41 projects for a total of \$14.7 million and 76K acres (actual)
 - FY24 Utah has 29 projects for a total of \$21.2 million and 112K planned acres
 - FY25 Utah has 13 projects for a total of \$15 million and 64.7K planned acres
- **BIL Fuels funding will support**
 - Mechanical Thinning, Prescribed Fire, Fuel Breaks
 - Employing Contractors, Young Adults, Veterans, and Tribal Nations' Youth (Add \$1.6 million)
 - Other Fuels Management



Questions?



Color Country Converging Landscapes Focal Area



U.S. Department of the Interior
Bureau of Land Management

Inflation Reduction Act BLM Utah Restoration Landscapes

Color Country and West Desert districts





Agenda

- Inflation Reduction Act Resilience and Restoration Funding Strategy Overview
- West Desert District Upper Bear River Restoration Landscape
 - Background
 - Proposed Projects
- Color Country District Converging Landscapes Restoration Landscape
 - Background
 - Proposed Projects



Bureau of Land Management – Inflation Reduction Act Resilience and Restoration Funding Strategy Overview

- The Inflation Reduction Act of 2022 (IRA) will enable the Department of the Interior to play a leading role in transitioning the nation to a clean energy economy, advancing key habitat restoration, land resilience and water projects, and securing environmental justice for historically disadvantaged communities.
 - Provides funding for conservation, resilience, and ecosystem restoration related programs and activities to advance on public lands.
 - Funds will be allocated to focal landscapes to allow for concentrated, diverse investment of projects and treatments
 - IRA funding will also
 - Secure native seeds and invest in seed infrastructure
 - Support and grow the assessment, inventory, and monitoring (AIM) program
 - Advance work to address resilient recreation, bison management, and drought.



BLM Utah IRA Strategy Overview



- The BLM has identified 21 restoration landscapes to invest IRA funding, leveraged by other spending from the Bipartisan Infrastructure Law, Great American Outdoors Act, and annual appropriations.
- Of three proposed focal landscapes in Utah, two have been identified for possible funding in:
 - Color Country District
 - West Desert District
- If approved, Utah could receive funding for each watershed.
- The investment would fund both the on-the-ground work and new positions.

West Desert District Restoration Landscape Strategy Overview

Background

- Requested funds to support management actions in Rich County, Utah including:
 - new personnel at BLM and local partners
 - improving existing infrastructure
 - preparing and implementing plans for restoring watersheds





West Desert District Upper Bear River Restoration Landscape Strategy Overview

Summary of Projects

- Riparian and Wildlife-friendly Fencing
- Vegetation Treatments and Weed Control
- Streams crossings, culverts, erosion control, beaver dam analogs, and recreation management
- NEPA, Cultural, and Watershed Management Plan
- Monitoring and science
- Capacity

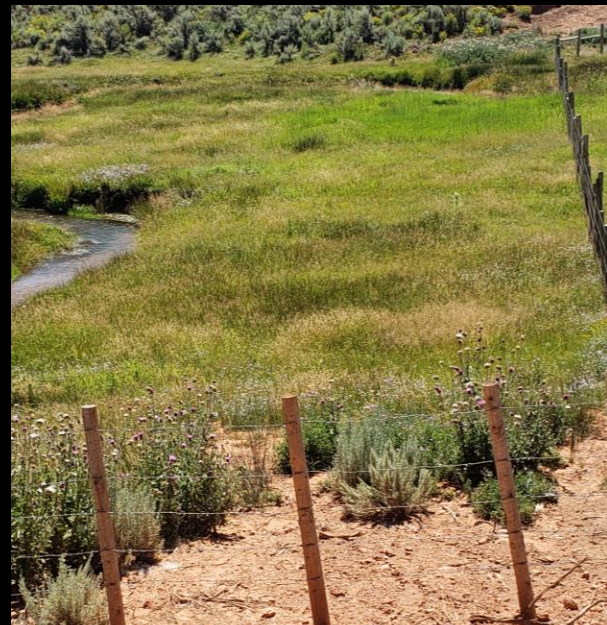




**Exclosures in disrepair on sections of Big Creek, prior to maintenance



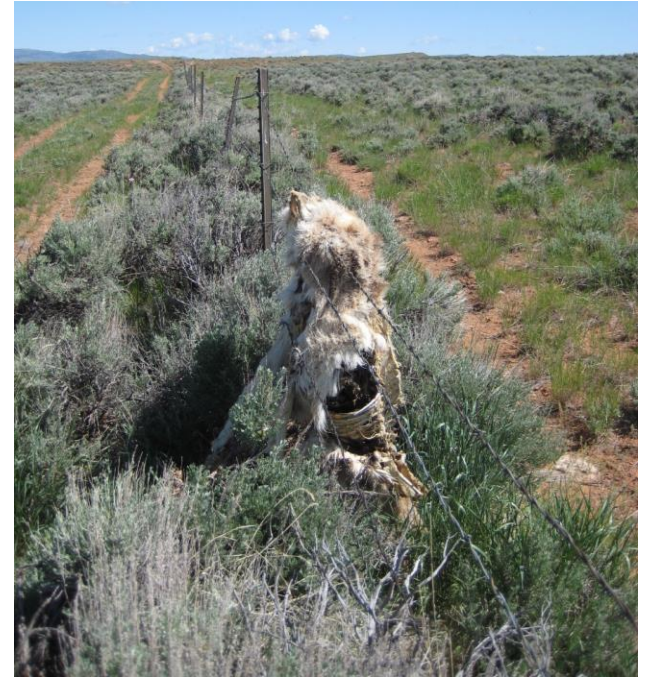
**Newly maintained exclosures on sections of Big Creek & Otter Creek, in the Three Creeks Allotment.



Water Resources

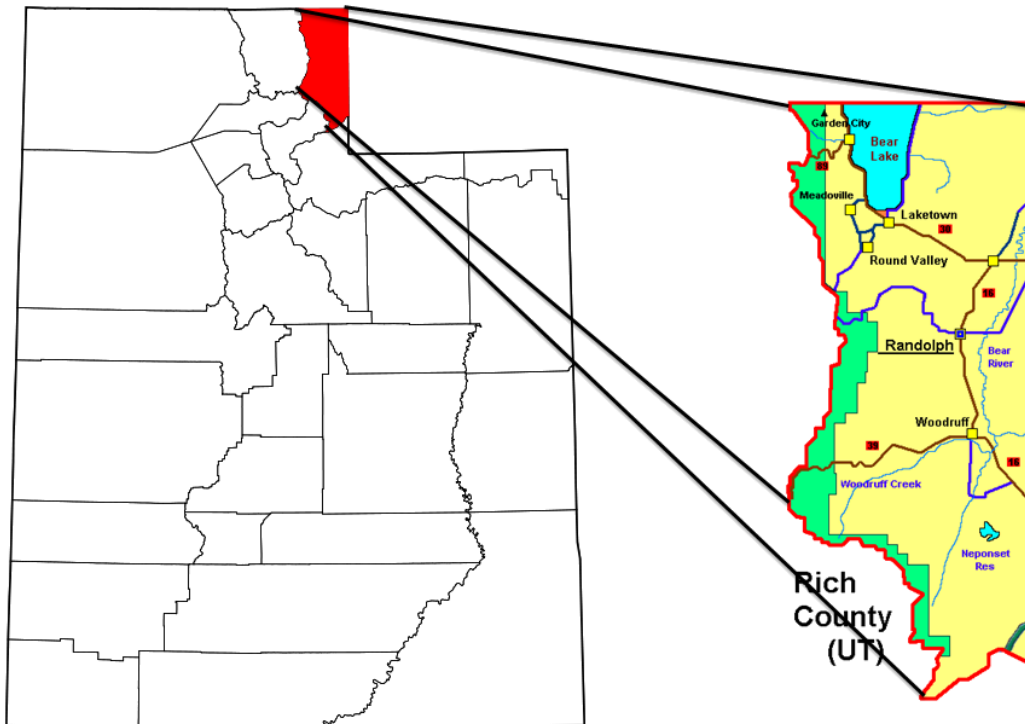
- Riparian enclosure maintenance
- Beaver dam analogs
- Fish passage
- Erosion control
- Improved road stream crossings

Impediments to wildlife movement





West Desert District Upper Bear River Restoration Landscape Strategy Overview



BLM Partnerships in Rich County

- Rich County cooperative resource management
- Utah State University
- Working Lands Conservation
- Utah Grazing Improvement Program
- Utah Division of Wildlife Resources
- USDA Forest Service



Color Country District Converging Landscapes Restoration Landscape Strategy Overview

Background

- Two adjacent watersheds (Upper Virgin and Escalante Desert) were identified as a single proposed Restoration Landscape in southwestern Utah.
- Restoration Landscape encompasses the transition between four level III ecoregions
 - Central Basin and Range
 - Mojave Basin and Range
 - Colorado Plateau
 - Wasatch and Uinta Mountains.

Restoration Landscape Funding Requests

- Riparian and Wildlife-friendly Fencing
- Vegetation Treatments
- Recreation and Travel Management
- Heritage Resources
- Lands and Realty
- Capacity

Color Country Converging Landscapes Restoration Landscape

Upper Virgin River and Escalante Desert Watersheds

Utah state parks in Restoration Landscape

- Sand Hollow (most visited in Utah)
- Snow Canyon (4th most visited in Utah)
- Quail Creek
- Gunlock
- Old Iron Town Historic Site
- Frontier Homestead





Vegetation Projects

- Perennial Forb and Sagebrush Propagation and Planting
- Creating Habitat/Plant Propagation for Special Status Plant Species Endemic to the Restoration Landscape
- Erosion Control Structures
- Post-wildfire Rehabilitation for Habitat Improvement
- Invasive Species and Noxious Weed Control
- Proactive Surveys for Special Status Plants and Wildlife Habitat
- Proactive Vegetation Treatments with Multiple Objectives



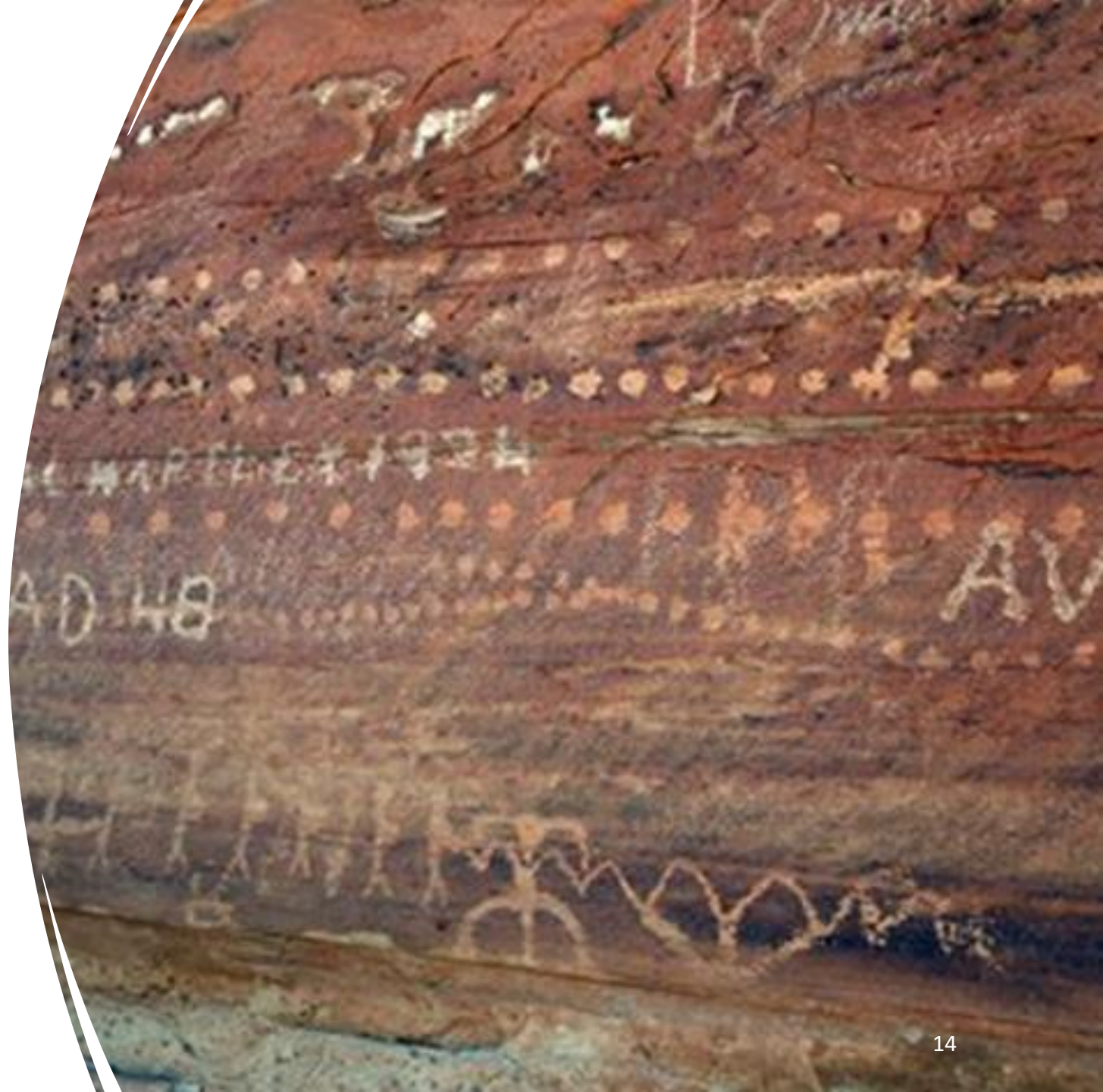


Riparian, Water and Wildlife Habitat Management

- Virgin River Program Partnership Support
- Water Developments
- Riparian Enhancements
- Fence Construction and Replacement

Heritage Resources Projects

- Comprehensive Class I Inventory
- Class III Cultural Resource Surveys
- Ethnobotanical Study
- National Historic Preservation Act Programmatic Agreement
- Paleo-Environmental Study





Recreation and Travel Management Projects

- Travel Management Planning
- Campground/Rec Site Development
- Trails and Associated Facilities
- Road Improvements (culverts, cattleguards, signage, etc.)



Lands and Realty

- National Environmental Policy Act Analysis for Solar Energy Zones
- Resolving Trespasses
- Land Acquisitions





Questions?



Utah Resource Advisory Council

Meeting Minutes

May 17-18, 2023

Cedar City Field Office, Utah

Meeting Attendees:

- **Utah Resource Advisory Council members:** Richard Draney, Simeon Weston, William Cox, Clifton Koontz, Cameron Cuch (Virtually), Tom Adams, Patrick Hearty, Joan Hayes, Neal Clark, Tyler Thompson, Dean Draper (Virtually)
- **BLM employees:** Randy Peterson, Evan Glenn, Andrea Brand, David Jacobsen, Nicole Lohman, Christopher Delaney, Mark Lawyer,
- **USDA Forest Service employees:** Dave Whittekiend, Lorie Price, Renee Flanagan (Virtually), Joanna Wilson (Virtually)
- **Members of the public:** Gary Gray, Cindy Bulloch, Kyle Wilson, Larry Ellertson

Welcome and Introductions

- Designated Federal Officer- Utah State Director Greg
- All RAC members were welcomed

BLM Utah Priorities

Bureau of Land Management Utah State Director Greg Sheehan

- Introductions start time 08:26am.
- Discussion about Public Lands rule and land exchanged.
- Planning efforts on several travel management plans- an extensive process and is open to the public to comment.
- Focusing on recreation right now. BLM Foundation for America's Public Lands. An independent entity and non-profit- created by Congress. The Foundation is staffed by the public and are appointed by



the Secretary of the Interior and have a term period much like RACs and MACs.

- Ongoing work on Monument Planning- Continue to work on Monument Planning- going through a public process for GSENM as well as BENM. We did an initial round for public comment period (open till June 20th for open public comment and June 5th is the public meeting). We will have a more complete draft for GSENM early summer and BENM in the autumn.
- Planning efforts include ongoing Greater Sage Grouse and Gunnison Sage Grouse projects and Sage-Grouse we are working through this at a national level and will work on a state level planning. Nada Culver is attending on behalf of the BLM.
- Solar Programmatic Impact Statement is underway able to address at a national level about further steps for state level. This gives solar opportunities rather than doing constant updates.
- Rulemaking considerations include multiple regulations. There is a public input to our rule making process. Including the Public Lands Rule. One purpose would allow for conservation leasing- conservation or compensatory mitigation work the link was put into the Q&A and shown to the RAC on screen as well as handed out the Public Land Rule and the FAQ <https://www.blm.gov/public-lands-rule#:~:text=FLPMA%20expressly%20states%20that%20public,the%20Orestoration%20of%20degraded%20lands>.
- The public comment period is open until June 20. The public meeting will be head virtually from 9:30-11:30 a.m. MST.
- Question from councilmember on whether the Public Lands Rule has a portion for a mule deer restoration project if there is a grazing permittee with a 10-year lease. Response was that the BLM will not kick either party off the lands and, if there is a conflict, an effort would be made to have the parties collaborate with each other.



Color Country District Planning

Presentation by Randy Peterson, BLM Acting Color Country District Manager.

- Overview – Three field offices, Richfield, Cedar City, and St. George.
- Color Country District field offices is shared services with Paria River District with different specialties.
- Lists several Great America Outdoor Act, Bipartisan Infrastructure Law, and Inflation Reduction Act projects happening in the Cedar City District.
- Overview of Richfield, St. George, and Cedar City Field Offices updated information and projects.
- Councilmember question about if Cedar City District is the only one that has the Intergovernmental Internship Cooperative (IIC) program? Response was that all districts are engaged in the IIC internship program.
- Discussion from councilmember about recreation development, specifically for trail improvement for adaptive and inclusivity. Dave Jacobsen has done an amazing job and states he has worked hard about trail systems and demand with campgrounds.
- Discussion about e-bikes and equestrian users.

Recreation Business Plans

Evan Glenn, BLM Recreation Program Lead. Start time 09:40AM. No presentation.

- Open discussion about recreation business plans being presented.
- Councilmember recommendation is a 30-day input period like NEPA.
- Business plans are available for the public on the BLM website.
- The Uinta-Wasatch-Cache Business Plan can be found on their website
- Discussion about annual reports and fee funding.



- Councilmember question on whether any of the campgrounds will have electricity and sewer. BLM's focus is not providing those levels of amenities.
- Councilmember question if there is a challenge due to fees and who collects them. Response was that three primary ways are a campground fee type, fee for geology areas (sand dunes), and area fees (recreation) collect revenue and manage the area. Not a lot of funding due to cost of clean-up, Law enforcement, and rangers.

Break until 10:15AM

Grand County Sand Flats Recreation Fee Proposal

Presentation by Andrea Brand, Grand County Sand Flats Recreation Area.

- Explanation of the BLM and Grand County partnership.
- Budget is exclusively from fees.
- Question from councilmember regarding the volunteer pass. Response from Sand Flats Recreation was that a \$25 annual pass is given to volunteers after helping for 4 hours.
- Councilmember question about more information on trailer fee. Response was that all size of trailers are equal price of \$5.00 changing to \$0.00.
- Discussion of day use fee to get into Sand Flats Recreation. Primary make it easier by stating 1–7-day use fee. Important to make it easier for public to understand the fee for one day use per vehicle.
- Motions to the vote on the Grand County Sand Flats Recreation fee proposal. Motion passed.
- Vote was unanimous to approve Grand County Sand Flats Recreation Fee Proposal

BLM Cedar City Field Office Recreation Fee Proposal



Presentation by David Jacobsen, BLM Cedar City Field Office Outdoor Recreation site plan start time 11:06AM.

- Discussion of upcoming changes for each campground and proposed fee change. Overview of New No Minimum fee sites.
- Councilmember question on the paintball complex maintenance and cost? Response Cedar City Field Office does not do any maintenance at this site.
- Councilmember question model airplane airfield and RC Track fee increasing. Dave response was that there is no fee increase on for these sites.
- Motions to vote on the BLM Cedar City Field Office Recreation fee proposal. Motion passed.
- Vote was unanimous to approve BLM Cedar City Field Office Recreation fee.

USDA Forest Service Recreation Fee Proposal

Presentation by Uinta, Wasatch, Cache Forest Supervisor Dave Whittekiend start time 11:28AM.

- Review of slide show from January 2023 meeting.
- Rocky Peak Campground campsites are all on recreation.gov and are no longer first come, first served.
- Retain 95% of the fee for staff pay, maintenance, improvements, etc.
- Question from councilmember regarding the hours required for the Volunteer pass. Can those hours be accrued by a group? The Forest Service answer was yes, they are working on putting the mechanism needed to record the hours.
- Question from councilmember regarding the volunteer pass. Response from Forest Service was that volunteer numbers on that forest are very high and new volunteer coordinators have been hired to assist.



- Councilmember question about the changes on how it would affect revenue the areas that were dropped for public. Response was that there is minimum to zero change to the fee.
- Councilmember question about do you have to pay a fee if you go through Alpine Loop. Response was that Alpine Loop you do not have to pay a fee if you go straight through. There is a contact station for further information.
- Councilmember question about Logan canyon fee, it is a winter fee and has not been dropped.
- Discussion of how amenities are related to fees. It is largely site-specific but generally increased amenities will have increased fees.
- Motions the vote on the USDA Forest Service Recreation fee proposal. Motion passed.
- Vote was unanimous for the USDA Forest Service Recreation fee proposal.

Cultural Site Stewardship Program

Presentation by BLM Archaeologist Nicole Lohman, and State Historic Preservation Officer Ian Wright

- Overview ongoing legislative session State Historic Preservation Office.
- Pre-205 field offices managed their own resources, 2020, House Bill 163 created a statewide stewardship program with the State Historic Preservation Office
- Councilmember question if Cultural site stewardship program is primarily volunteer work. Response was that yes, it is all volunteer work.
- Councilmember question if other states have similar groups. Response was that yes, others have multiple stewardships as well.



- Councilmember question if there is a minimum age. Interested people under 18 on BLM have to be accompanied by a parent/guardian. Otherwise, there are no age cut-off for site stewards

LUNCH 12:27-1:37PM

BLM Fire and Fuels Program

Presentation by BLM State Fire Management Officer Christopher Delaney start time 13:38PM.

- Discussion about the prediction of 2023 fire season outlook for Utah.
- Councilmember question about what is more likely to start a fire- human or natural causes? Response was that it is about 50/50 as of this year. Helpful way to keep fire reduced is fire campaign that get the word out to the public.
- Discussion about the concern the biggest fire years, historically have been about two years after a wet winter when there is a fuel that may pile up. Need to be aware of different situations that could happen.
- Discussion about drought is ongoing in Utah. Conditions have improved significantly since last year with wetter conditions within the last 6+ months.
- Discussion about flood potential due to snowpack comparisons.

Bipartisan Infrastructure Law

Presentation by BLM Senior Policy Advisor Mark Lawyer and BLM State Fire Management Officer Christopher Delaney

- Overview information about implementation updates as it pertains to BLM Utah BIL.
- Discussion about funding benefits for firefighter due to longer period of work hours. Having benefits provide will help attract younger people to help pursue their career.



- Councilmember question about pay for firefighter's special pay supplement. Response with money expected to expire by October 2023.

Break 3:15PM

BLM Inflation Reduction Act (IRA)

Presentation by BLM Acting Color Country District Manager Randy Peterson

- Discussion on BLM Inflation Reduction Act and the BLM Utah strategy
- Quick overview of what the Inflation Reduction Act may entail such as improvement to water resources, removing impediments to wildlife movement, landscaper restorations, vegetation projects, and habitat management, among others.
- Councilmember question a time period on the funding levels. Response was that we expect to see them soon in fiscal years 2023-2024 dollars.
- Councilmember question is Native Seed Collection national? Response was that Native Seed collection is for habitat restoration projects. The focus is for large scale projects. Utah does have seed warehouse. Nationally, the seed we put on the ground is 10% of native seed.

Advisory Council Discussion

- Councilmembers discuss upcoming meeting dates. August 15 and 16, 2023 in Vernal, Utah. On November 14 and 15, 2023 in Blanding, Utah Bears Ear Meeting. Each meeting will have a discussion followed with a field tour the next day.
- Discussion about future dates and agenda topics.
- Discussion about appropriate areas for dispersed camping.

Public Comments



- Larry Ellertson – Thanks every one of the Councilmembers and BLM for each of their involvement in the BLM sustainable multiple use. The need to educate user of the public lands is important. To be able to eliminate the problems on public lands. Councilmembers thanks Larry for his time and for being present.

No other comments. Motion to close public comment 4:05PM.

Final Discussion

- Discussion about upcoming RAC vacancies.
- Discussion of next agenda. One agenda request was a presentation on appropriate dispersed camping. Another request was to have a Dingell Act update, specifically John Wesley Powell
- Discussion about upcoming locations and time period to meet in February at St. George, Utah, was suggested in late January to February. Date is to be determined.
- Tour of the Cedar City Field Office is tomorrow, May 17, 2023, at 8a.m.-1p.m.
- Discussion of circulating and approving minutes as a group.

Motion to adjourn the meeting. Motion seconded. Meeting adjourned at 4:20 p.m.