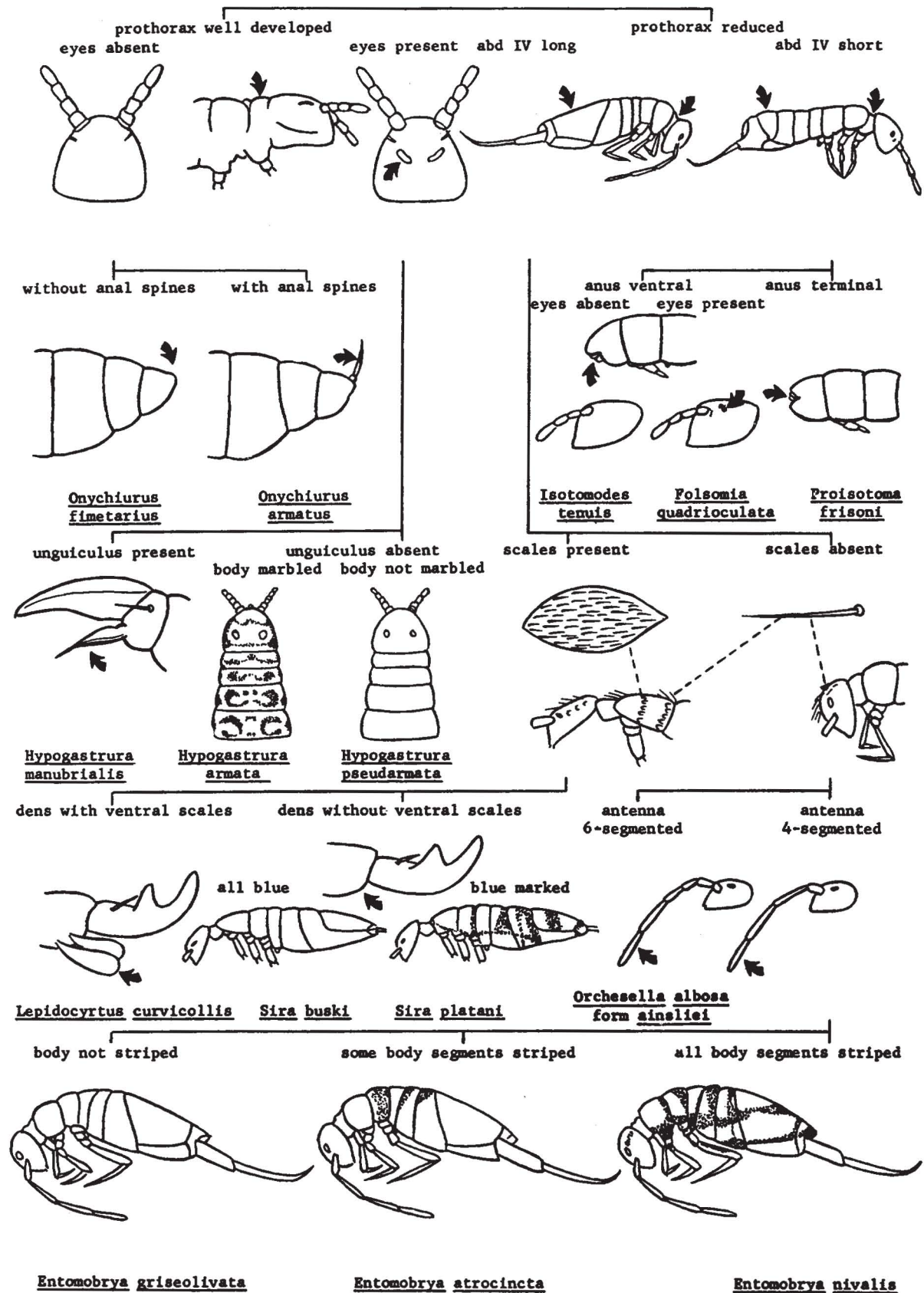
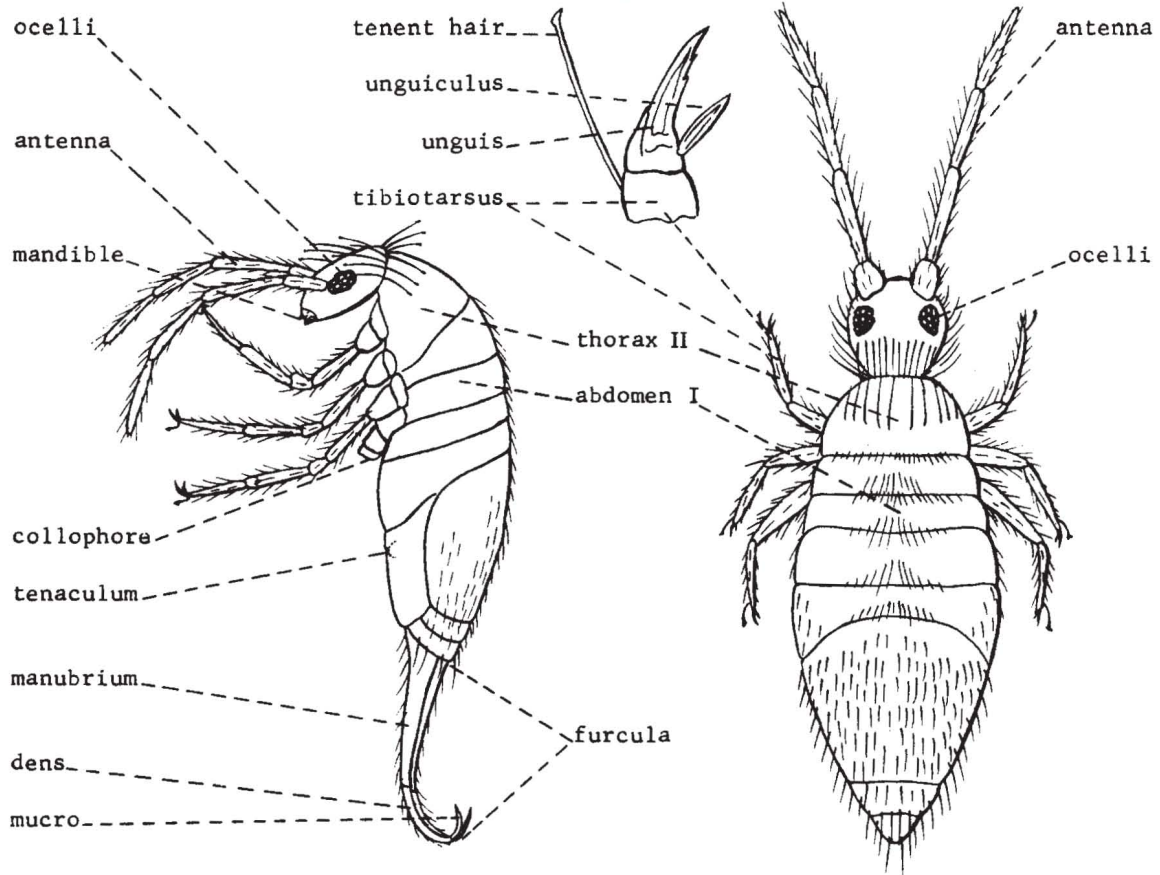


COLLEMBOLA: PICTORIAL KEY TO COMMON DOMESTIC SPECIES

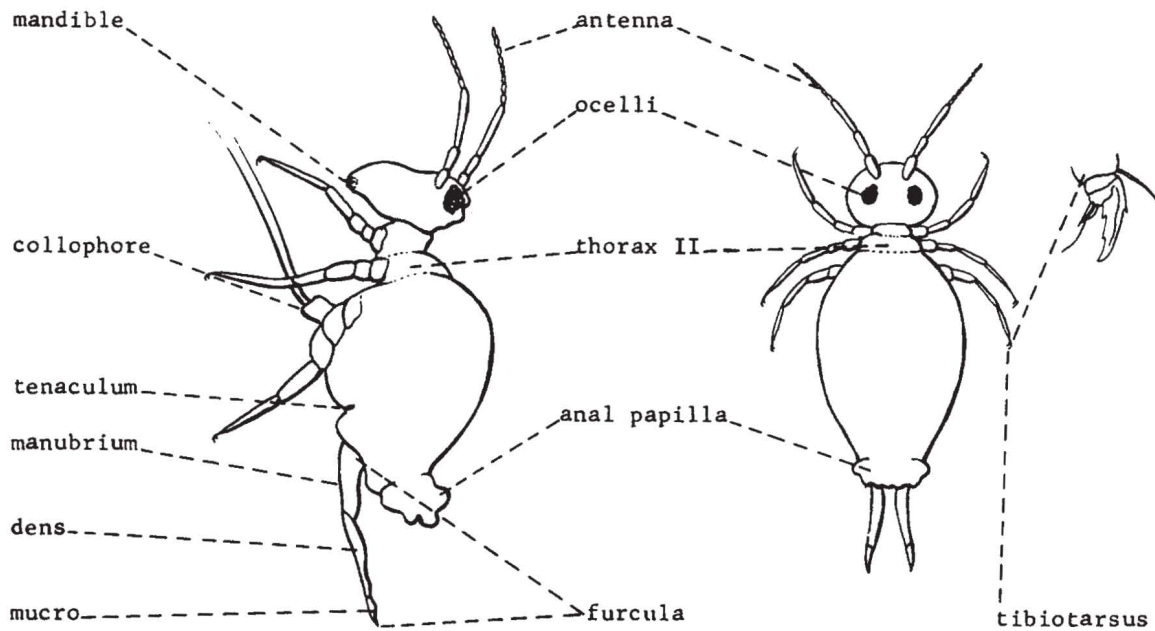
Harold George Scott, and Chester J. Stojanovich



**COLLEMBOLA DIAGRAMS**  
**Harold George Scott**

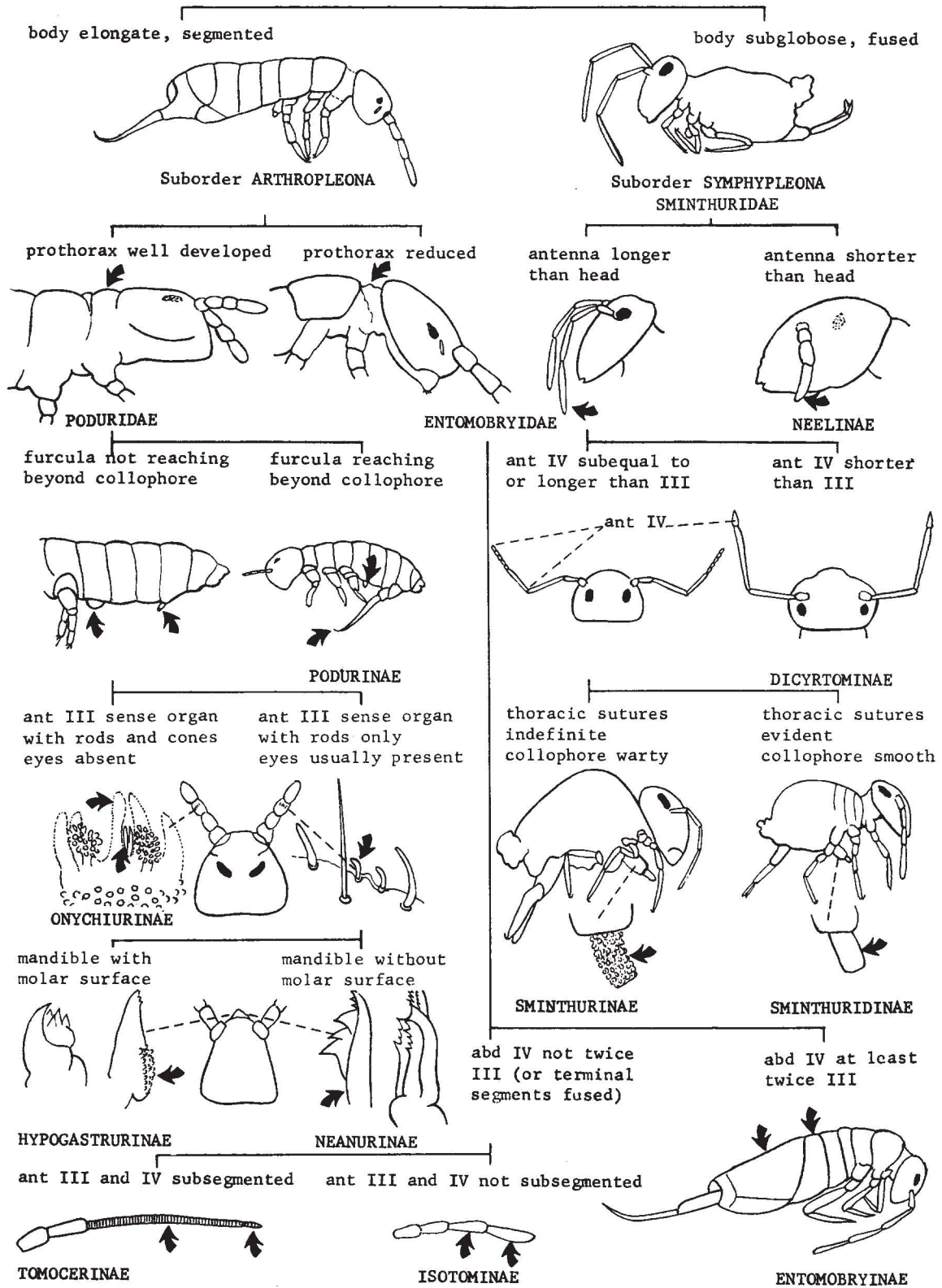


**SUBORDER ARTHROPLEONA**



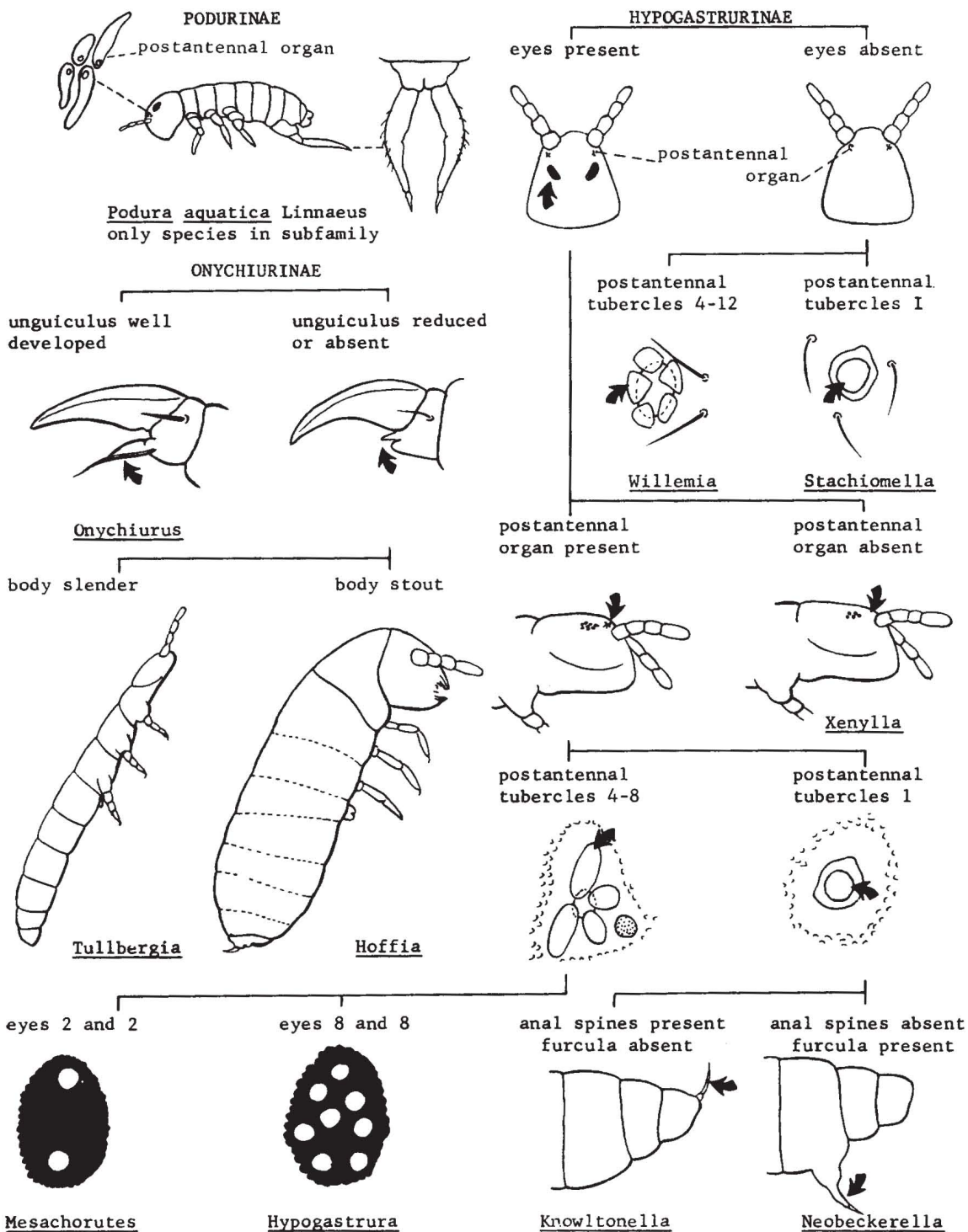
**SUBORDER SYMPHYPLEONA**

**COLLEMBOLA: PICTORIAL KEY TO WORLD SUBFAMILIES**  
Harold George Scott, Ph.D.



**COLLEMBOLA: PICTORIAL KEY TO NEARCTIC GENERA**  
 Harold George Scott, Ph.D.

**SUBFAMILIES PODURINAE, HYPOGASTRURINAE, AND ONYCHIURINAE**



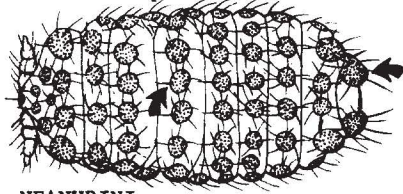
**COLLEMBOLA: PICTORIAL KEY TO NEARCTIC GENERA**

**Harold George Scott, Ph.D.**

**SUBFAMILY NEANURINAE**

abd VI large, bilobed  
segmental tubercles present

abd VI small, rounded  
segmental tubercles absent



**NEANURINI**

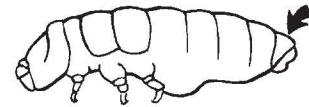
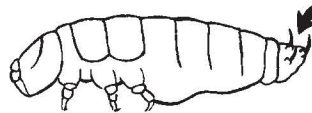
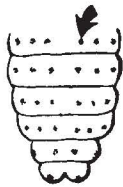
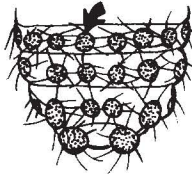
**PSEUDACHORUTINI**

segmental tubercles large

segmental tubercles small

anal spines present

anal spines absent



Neanura

Neanurodes

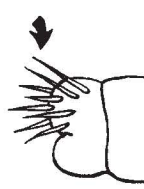
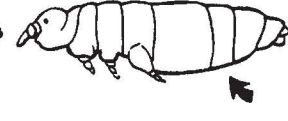
furcula present

furcula absent

anal spines 2

anal spines 3-5

anal spines 8

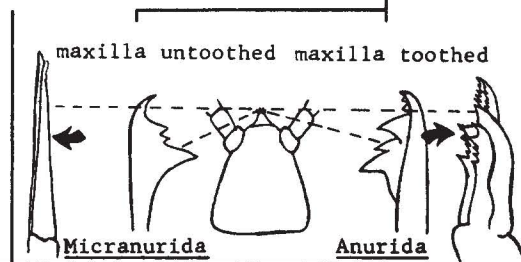


Xenyllodes

Friesea

Prospinanura

maxilla untoothed maxilla toothed



Micranurida

Anurida

eyes 5 and 5

eyes 6 and 6

eyes 8 and 8



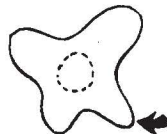
**Microgastrura**

postantennal tubercles 8

postantennal tubercles 4-5

with buccal cone

without buccal cone



Logacanura

Odontella

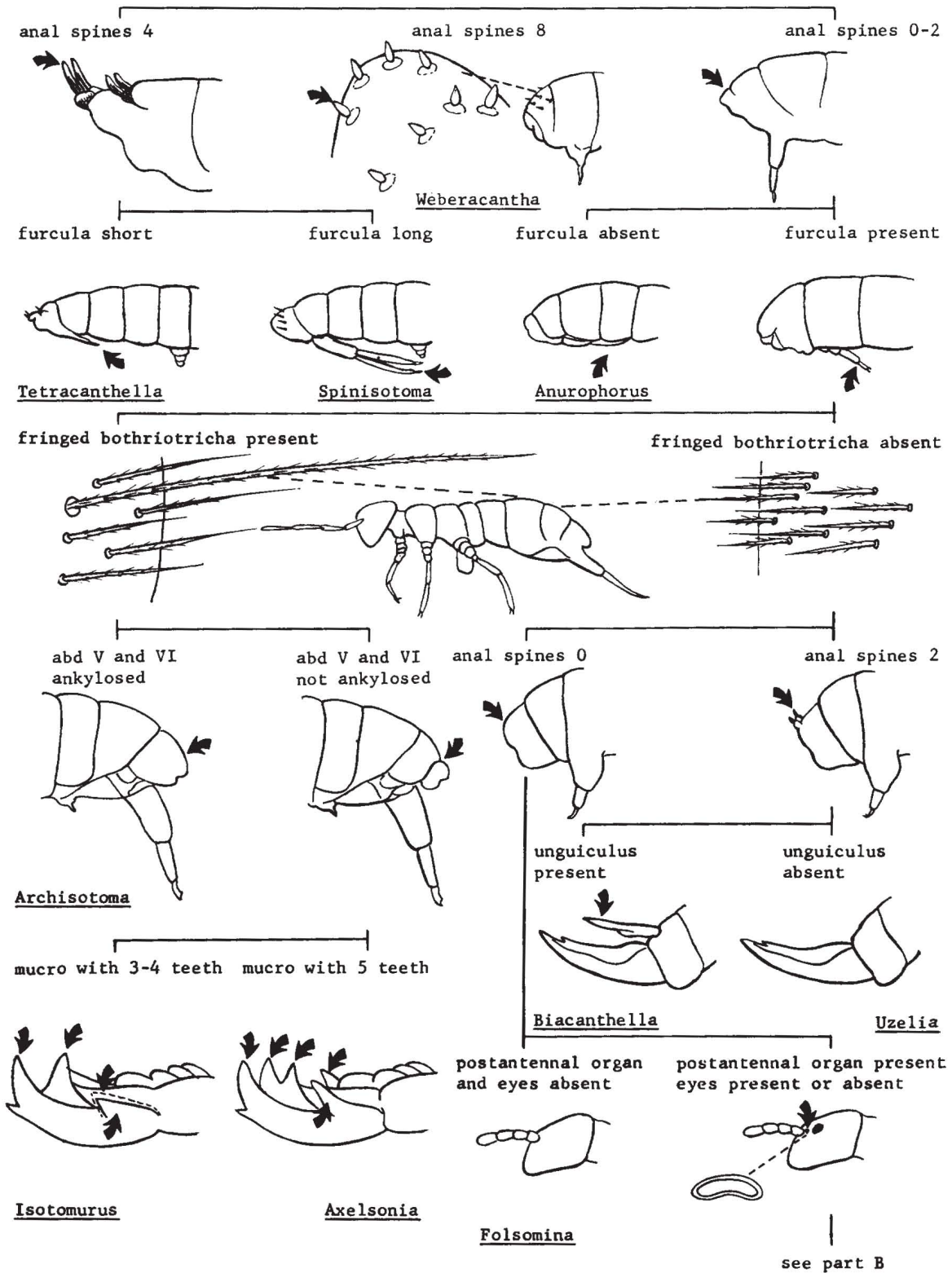
Brachystomella

Pseudachorutes

COLLEMBOLA: PICTORIAL KEY TO NEARCTIC GENERA

Harold George Scott, Ph.D.

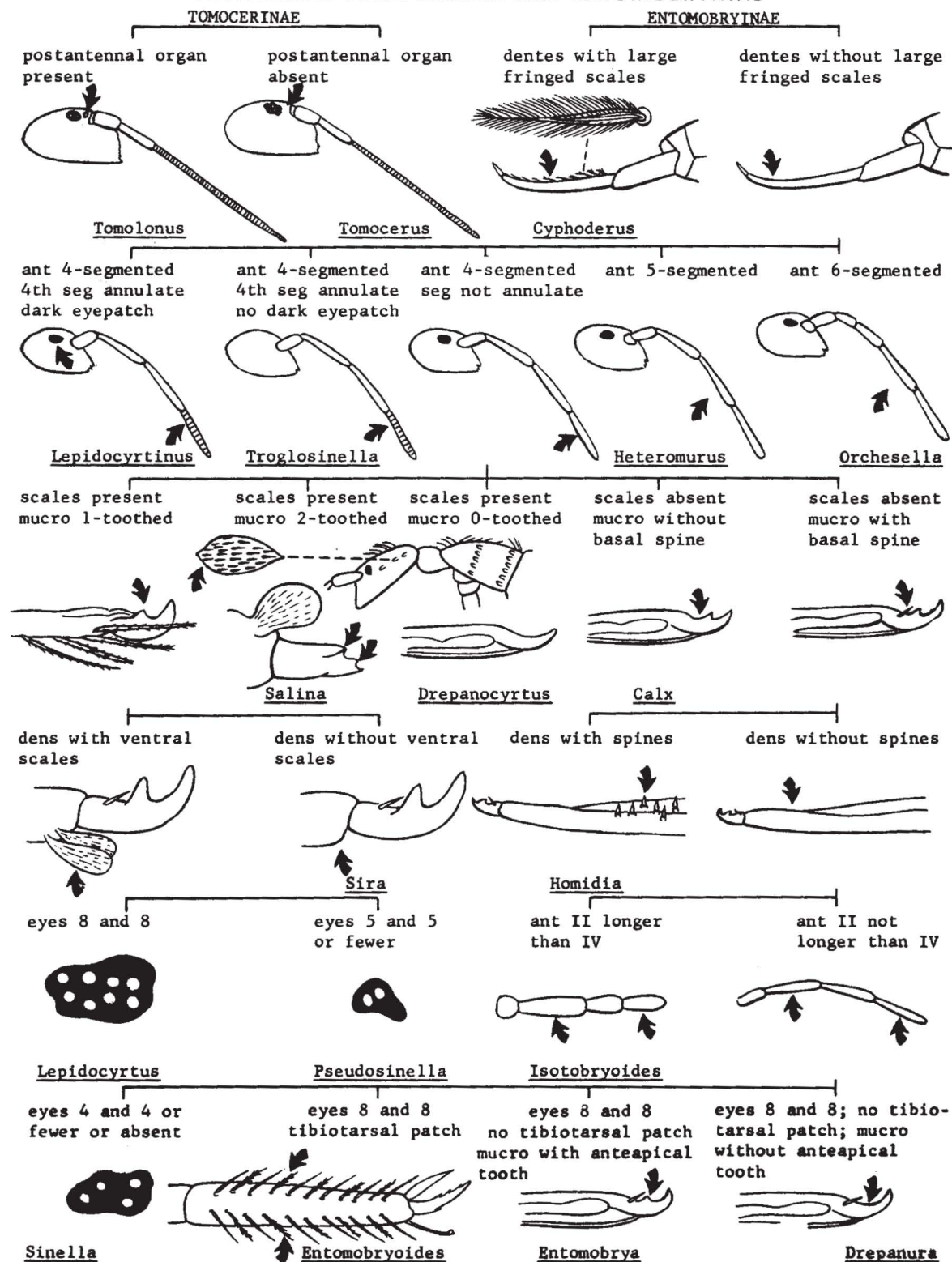
SUBFAMILY ISOTOMINAE - Part A





COLLEMBOLA: PICTORIAL KEY TO NEARCTIC GENERA  
Harold George Scott, Ph.D.

SUBFAMILIES TOMOCERINAE AND ENTOMOBRYINAE





**COLLEMBOLA: PICTORIAL KEY TO NEARCTIC GENERA**  
**Harold George Scott, Ph.D.**  
**FAMILY SMINTHURIDAE**

