

SEPTEMBER 2020



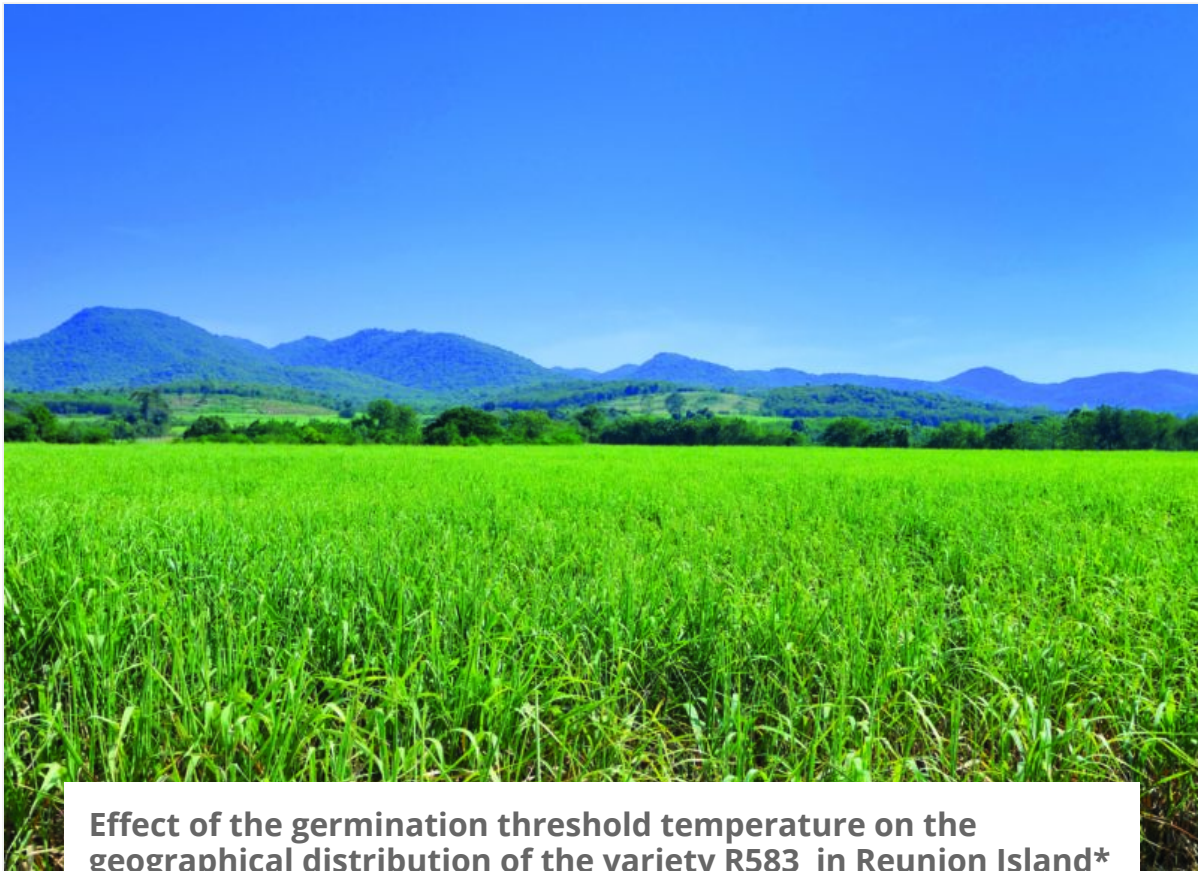
Field evaluation of infestation levels of the sugarcane mealybug *Saccharicoccus sacchari* (Cockerell) on different sugarcane varieties in Guangxi Province, China: Preliminary results [Full subscriber]

Amin Nikpay, Chun-Yan Wei, De-Wei Li, Francois-Regis Goebel, Jin-Ju Wei, Xiu-Peng Song, Ya-Wei Luo, Zhen-Qiang Qin

We use cookies to improve your website experience. To learn about our use of cookies and how you can manage your cookie settings, please see our [Cookie Policy](#).

By continuing to use the website, you consent to our use of cookies.

Ok Read more



Effect of the germination threshold temperature on the geographical distribution of the variety R583 in Reunion Island* [Full subscriber]

C Poser, F Ruget, FR Goebel, L Barau, M Mézino



We use cookies to improve your website experience. To learn about our use of cookies and how you can manage your cookie settings, please see our [Cookie Policy](#).

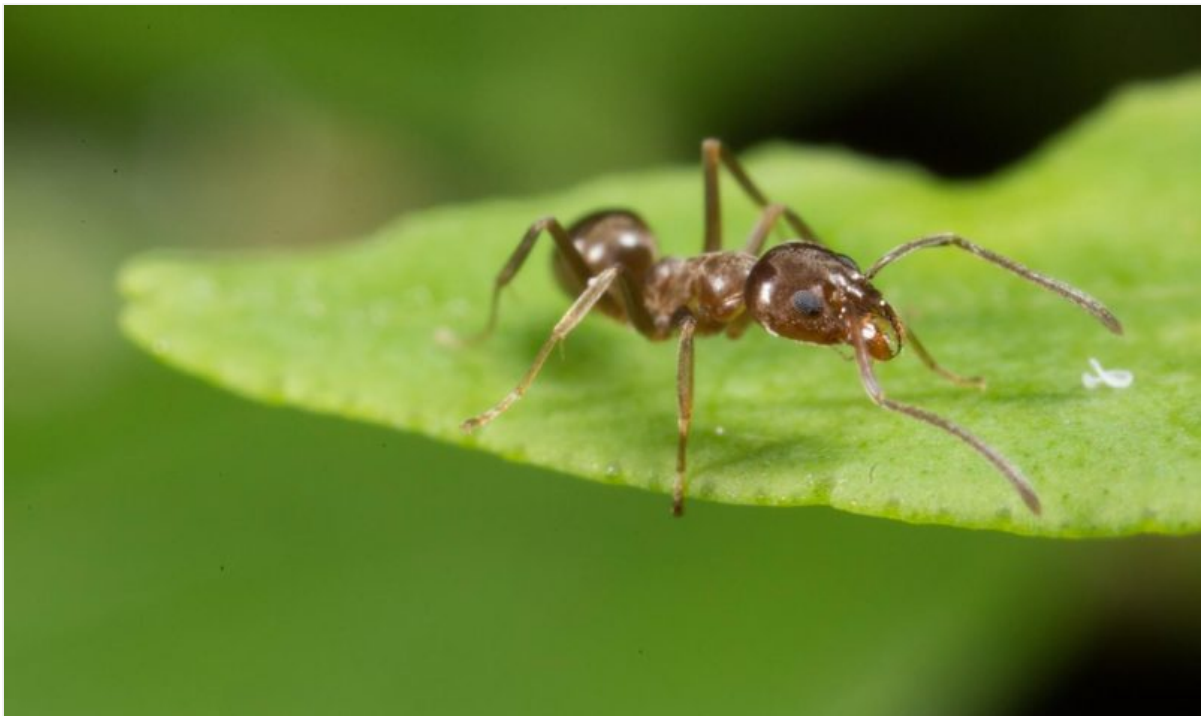
By continuing to use the website, you consent to our use of cookies.

Ok Read more



Experiences with the use of filtering nozzles in sugar mill XM-type rolls*

JJ Sanchez, S. Chavarro



We use cookies to improve your website experience. To learn about our use of cookies and how you can manage your cookie settings, please see our [Cookie Policy](#).

By continuing to use the website, you consent to our use of cookies.

Ok Read more