

# BCBC2020-25: Flesh-footed shearwater population study

Korapuki, Kawhitu Stanley, Moturehu Double, and Whakau Red Mercury Islands

26 July 2021

Claudia Mischler



New Zealand Government

# Outline

- › Trip background and outline
- › Korapuki
- › KawhITU Stanley
- › Moturehu Double
- › Whakau Red Mercury
- › Conclusion



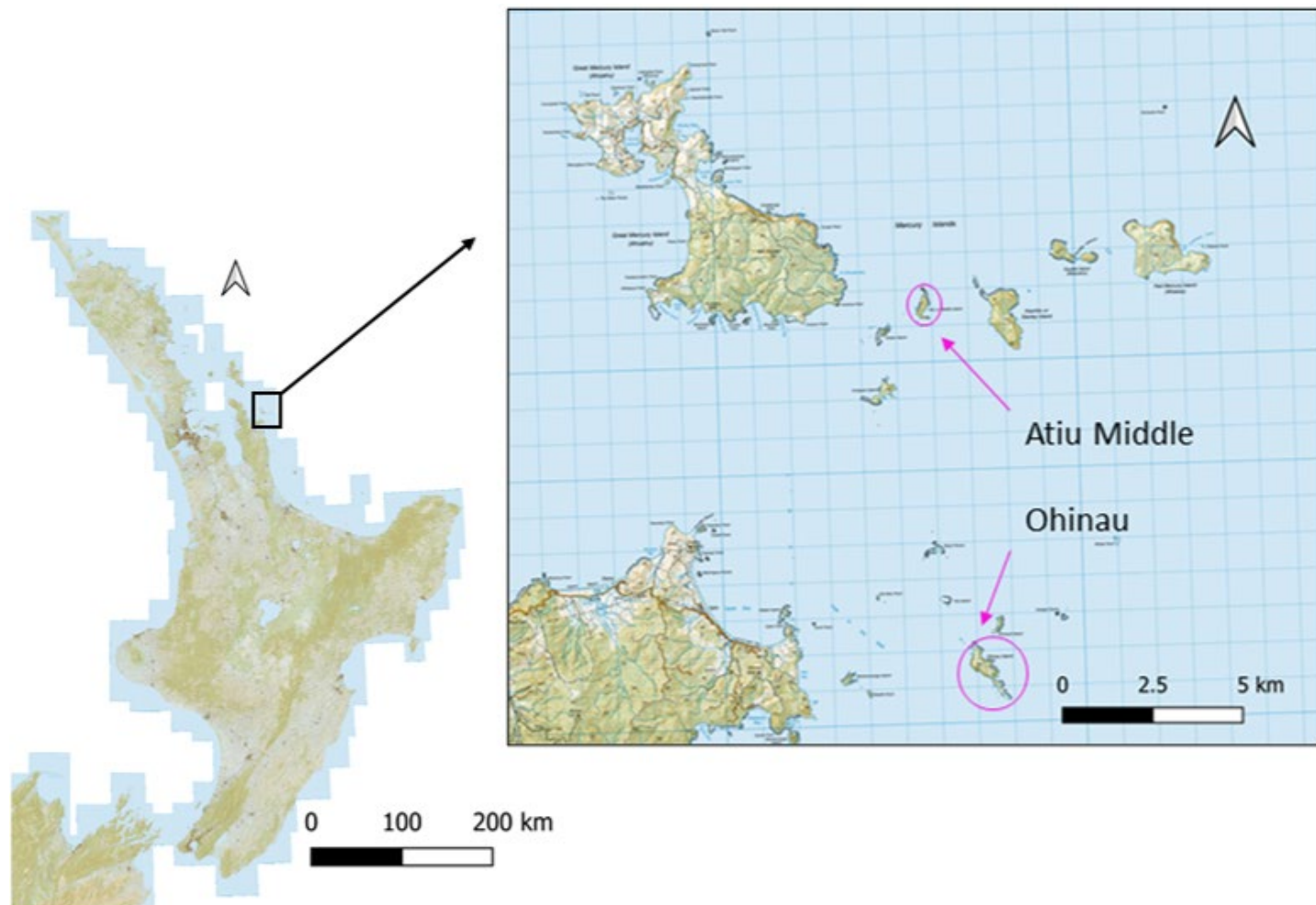
## Flesh-footed shearwater

- Threatened - nationally vulnerable
- Breed on islands in northern New Zealand and Cook Strait
- Threats are primarily at sea
- Breed from September to May
- Total NZ population is estimated to be between 10,000-15,000 pairs in 2012

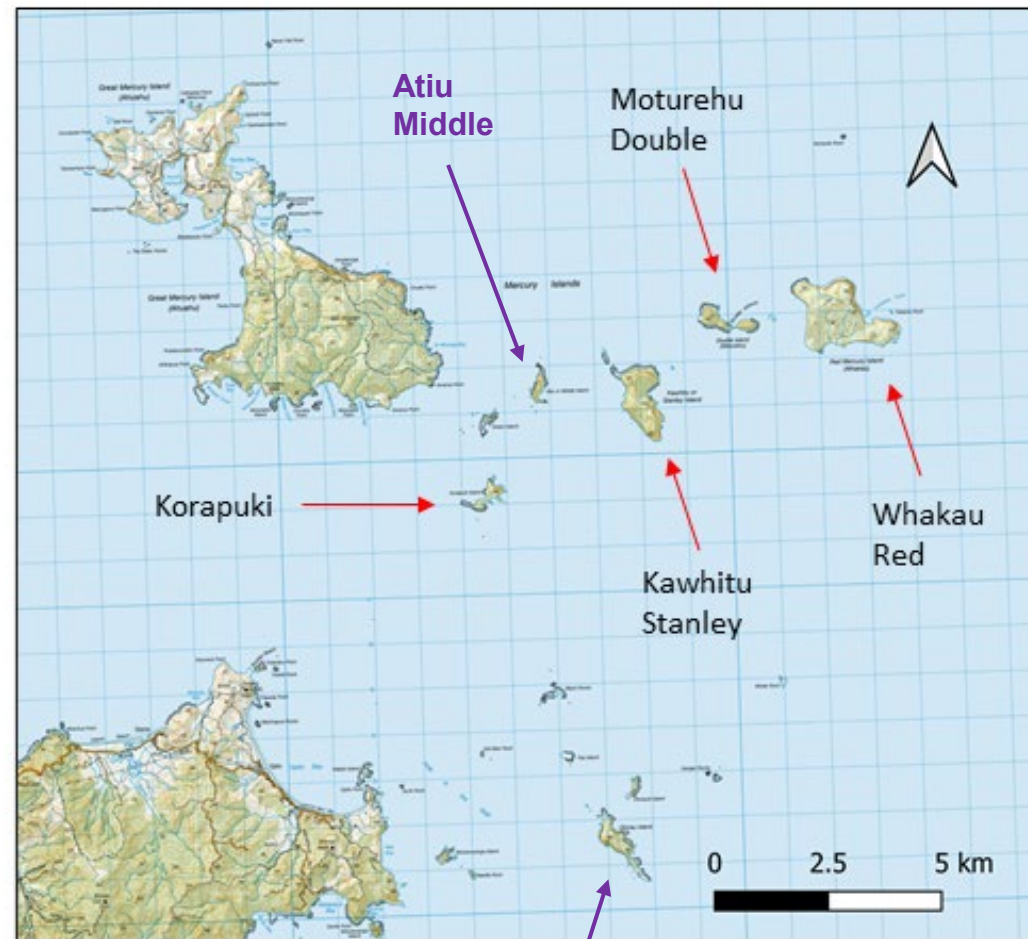
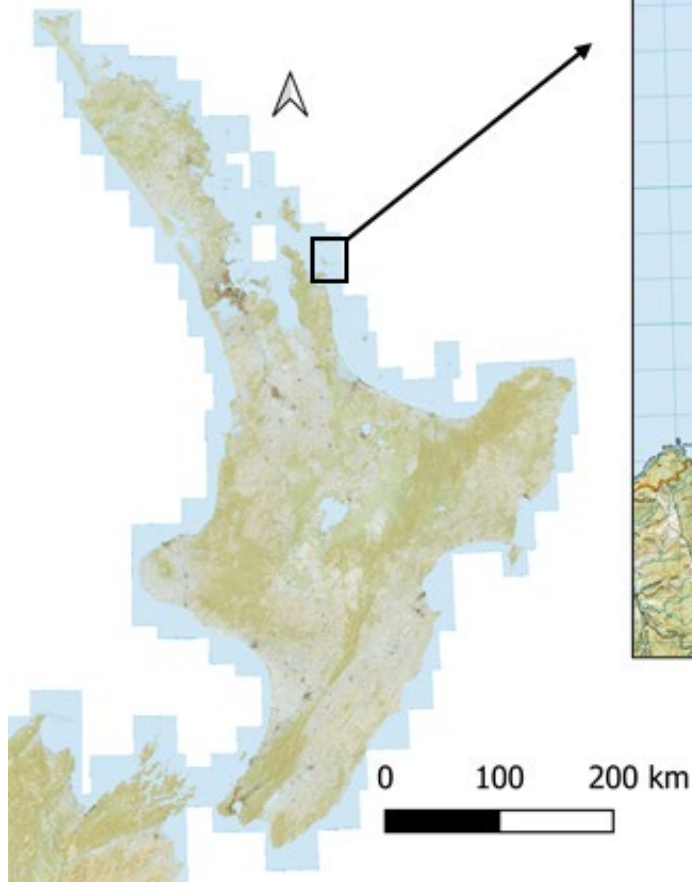
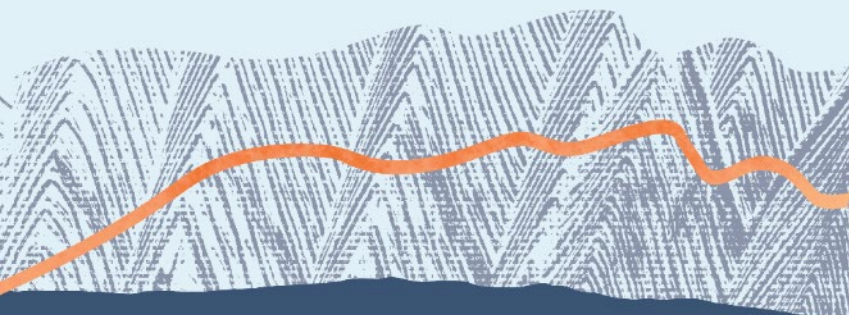


## Previously Surveyed Islands

- > **Atiu Middle:** estimated at 3,000 pairs in 2003; survey in 2017 estimated 5,800 pairs
- > **Ohinau:** estimated at 2,100 pairs in 2014; survey in 2017 estimated 4,000 pairs



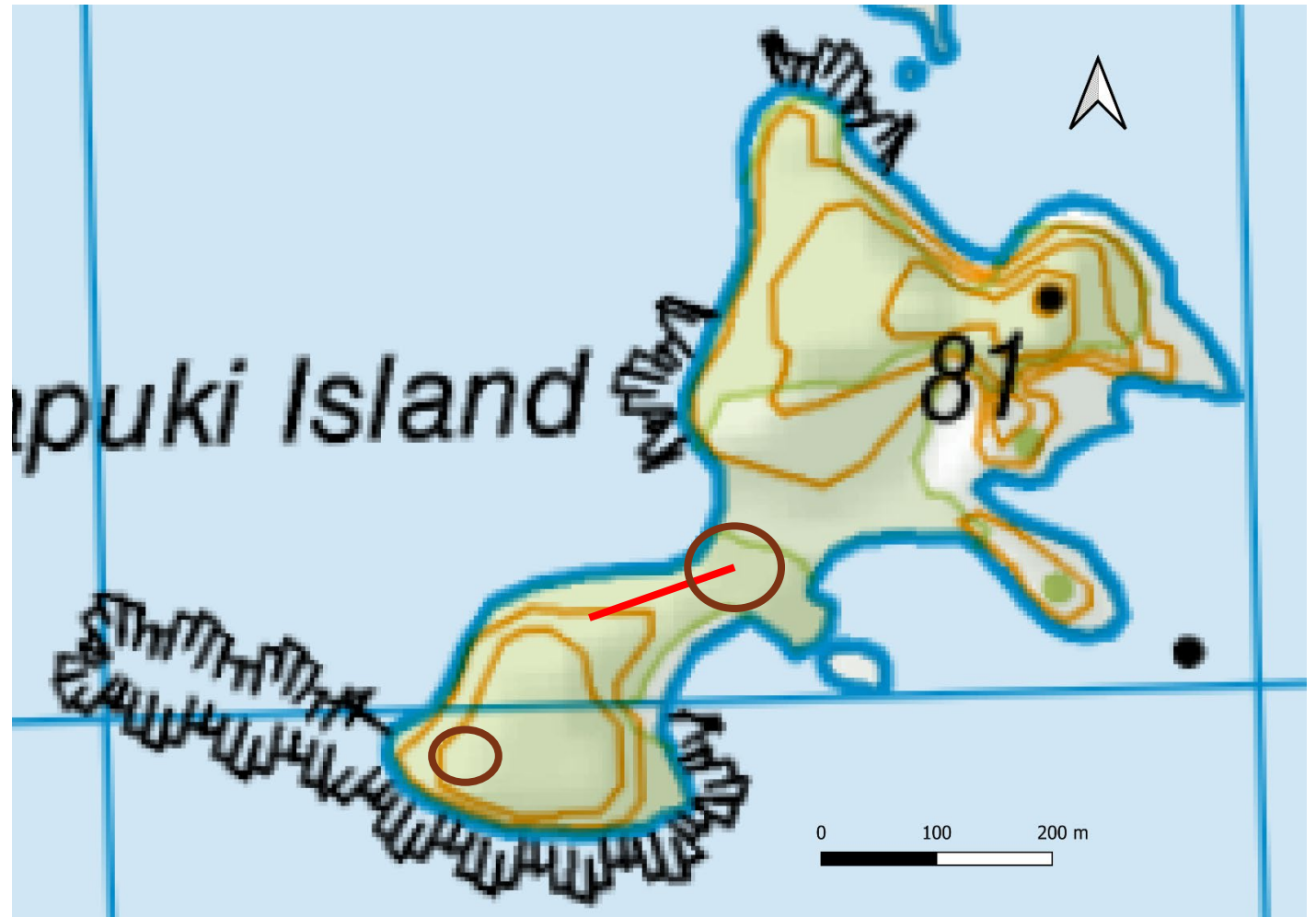
# Mercury Islands



Ohinau

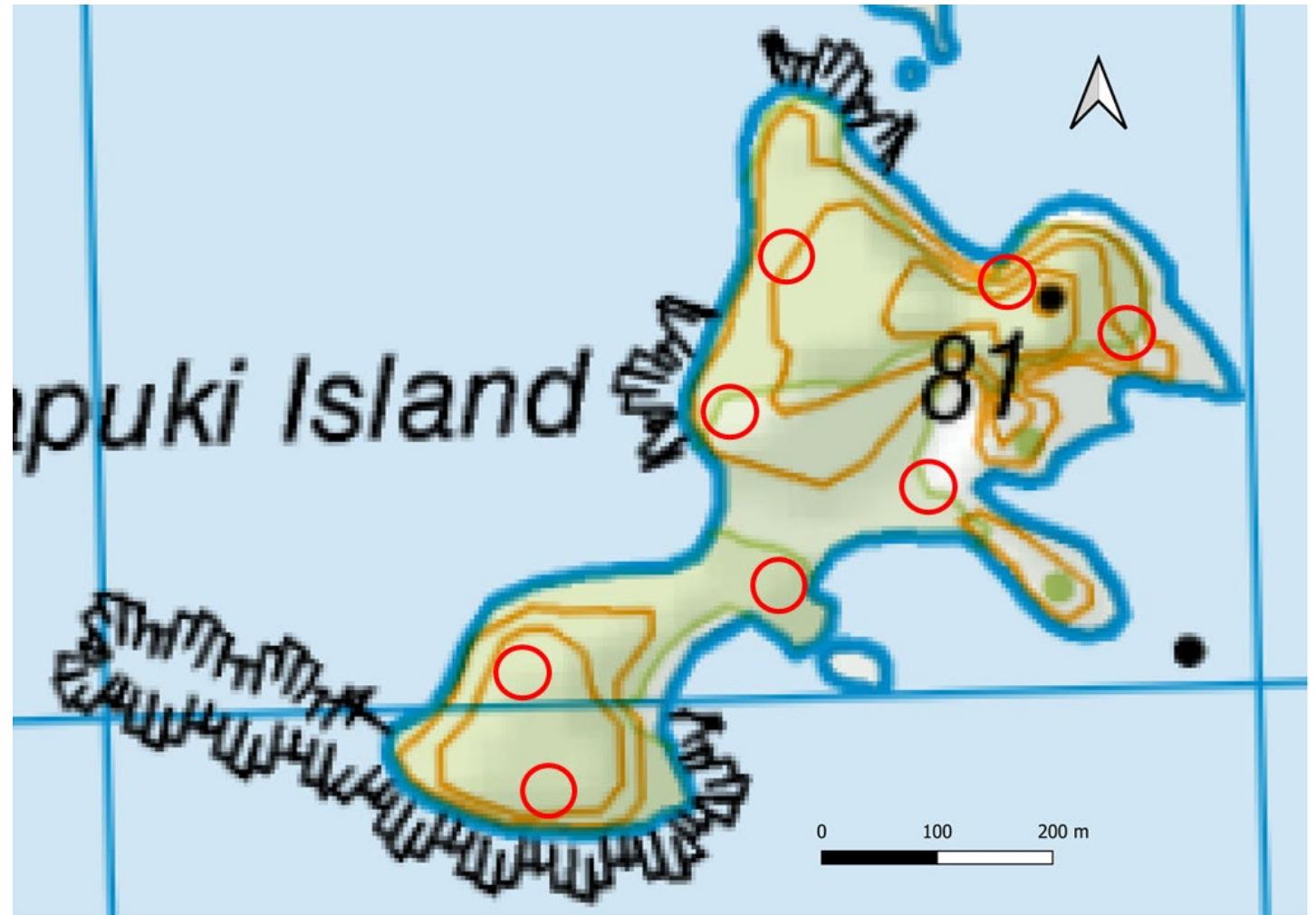
## Korapuki Island

- 2 adults in 1974
- 10 occupied burrows in 2003

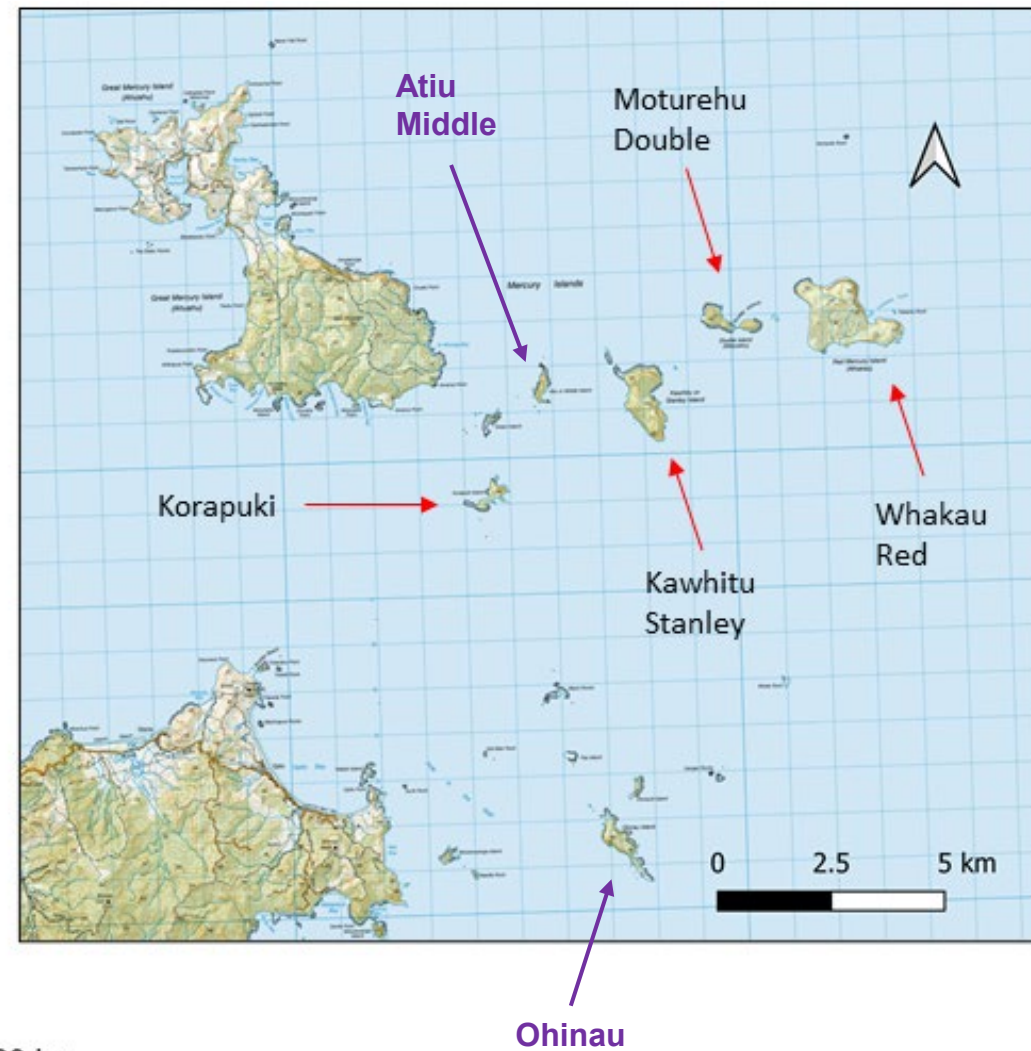
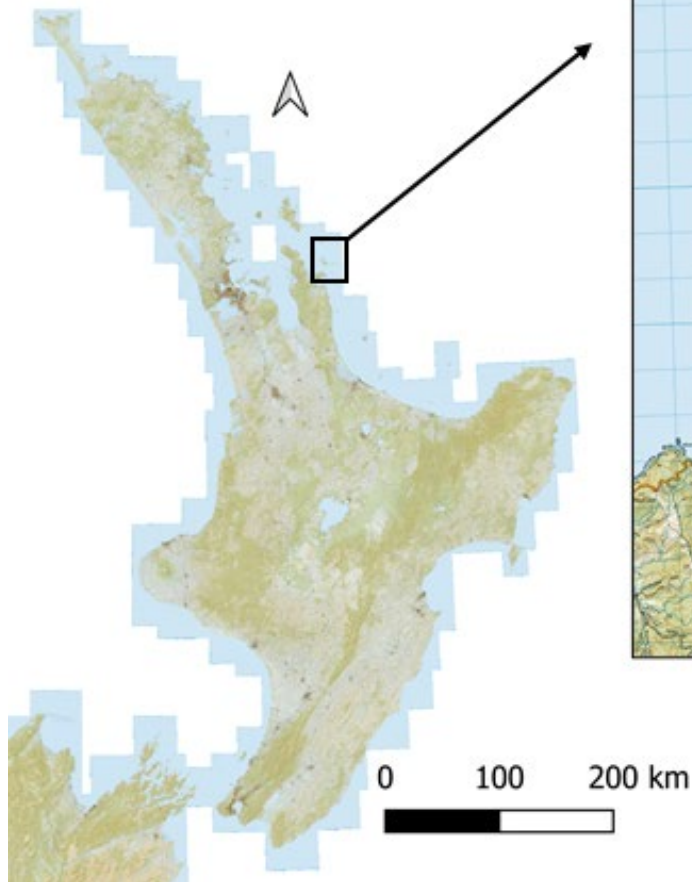
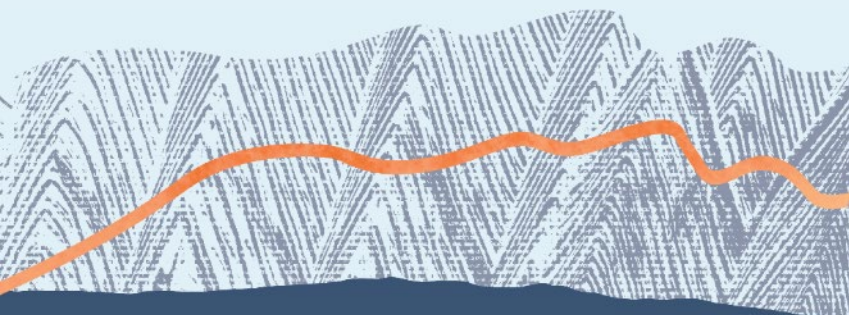


- Listening from 2130-midnight
- Listening from 0330-0500hrs
- 4 nights, 2 dawns

## Korapuki Island



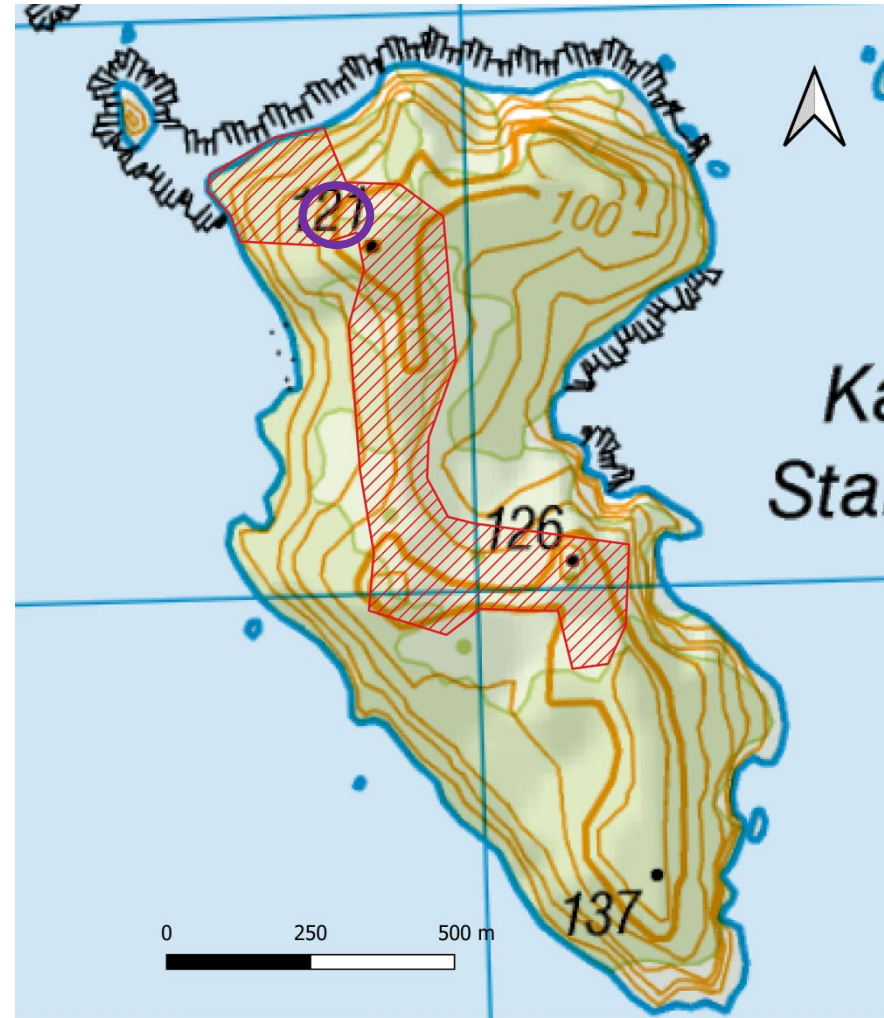
# Mercury Islands





# Kawhitu Stanley Island

- None in 1965
- 1 occupied burrow in 1998 and 2003
- Listening from 0330-0600hrs
- 3 dawns



# Kawhitu Stanley Island



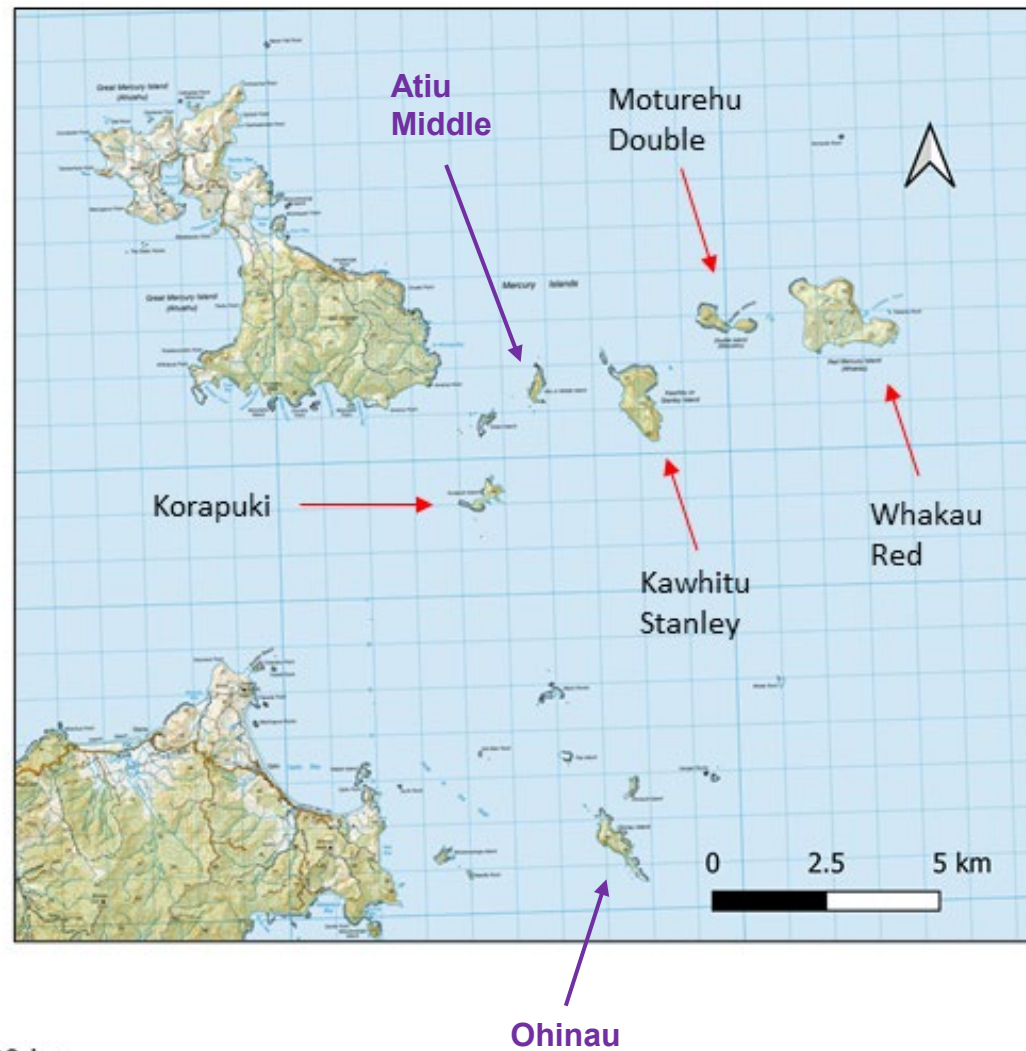
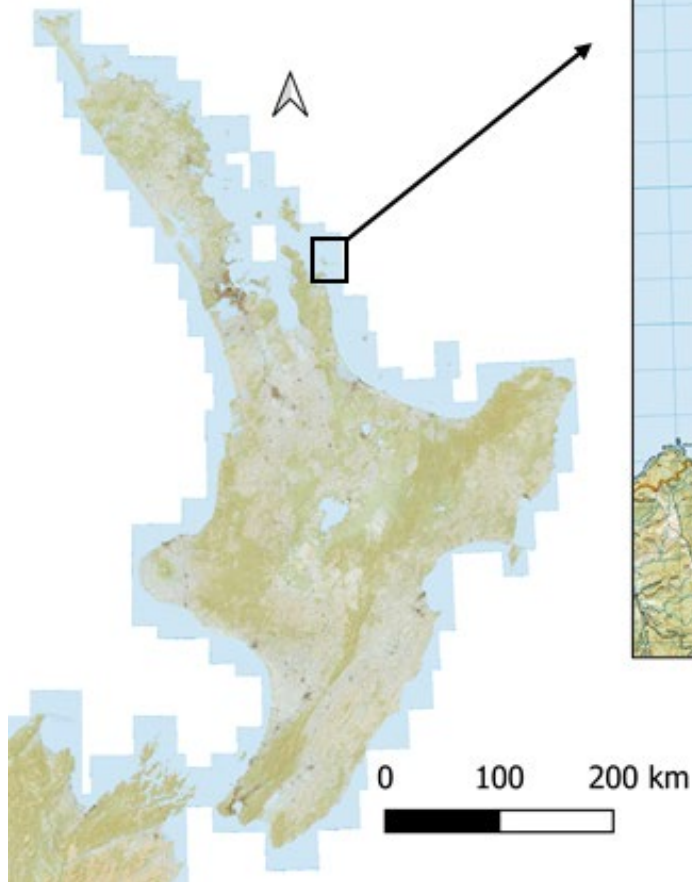
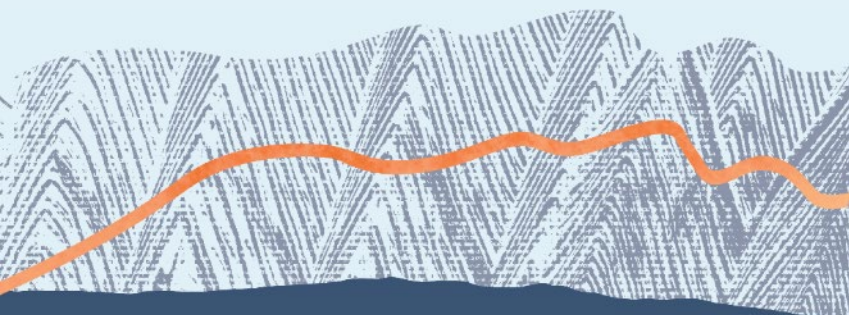
Estimate of 50-100 pairs



# Kawhitu Stanley Island

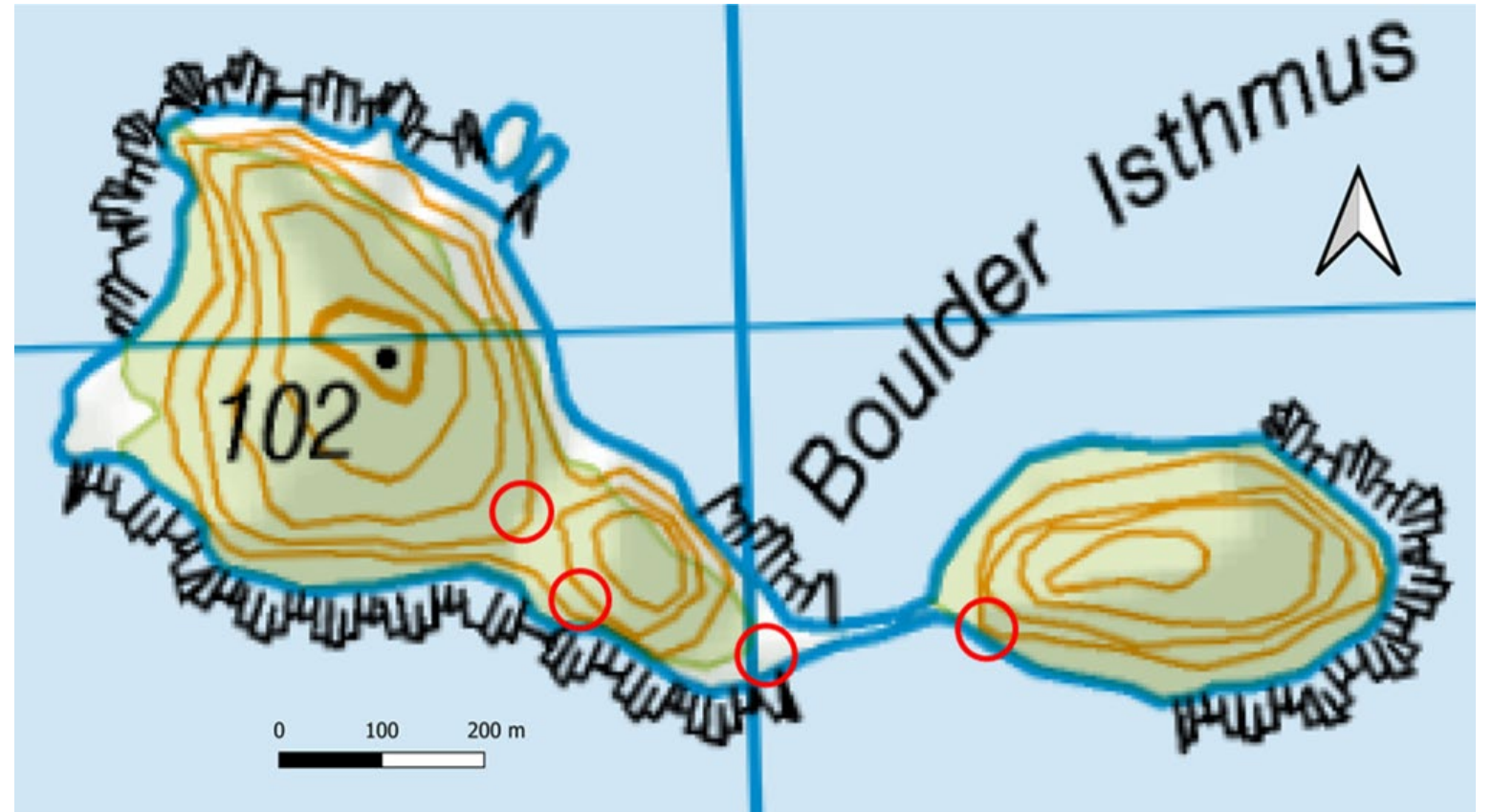


# Mercury Islands

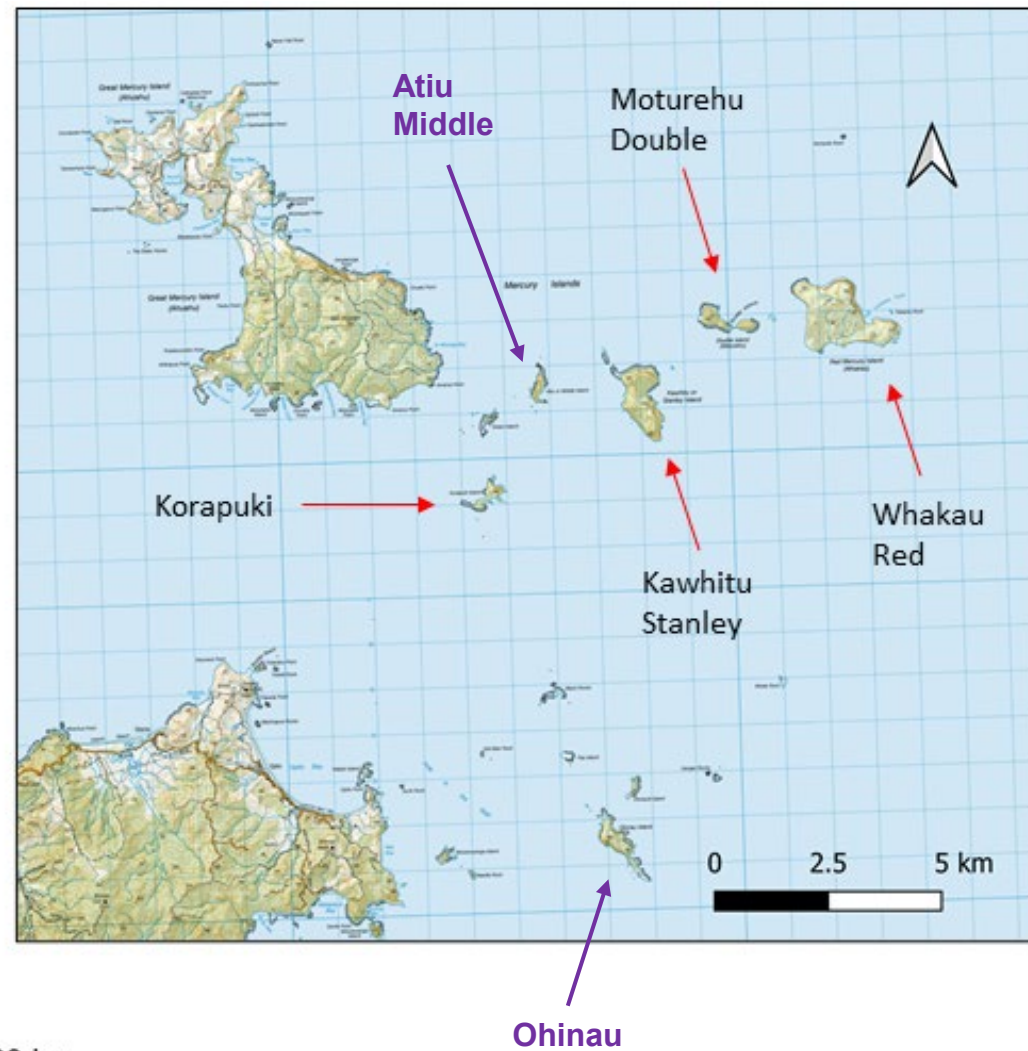
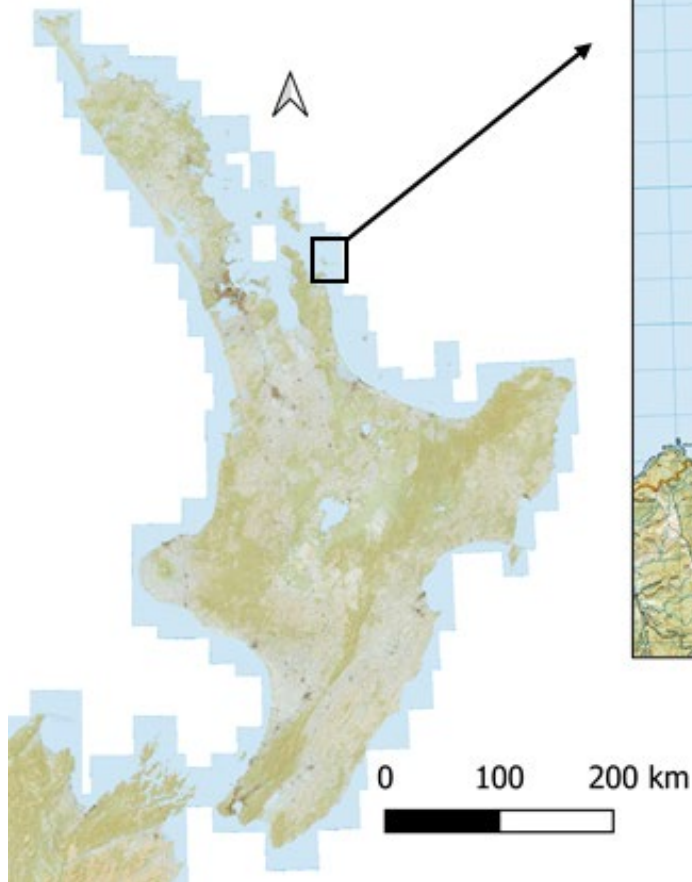
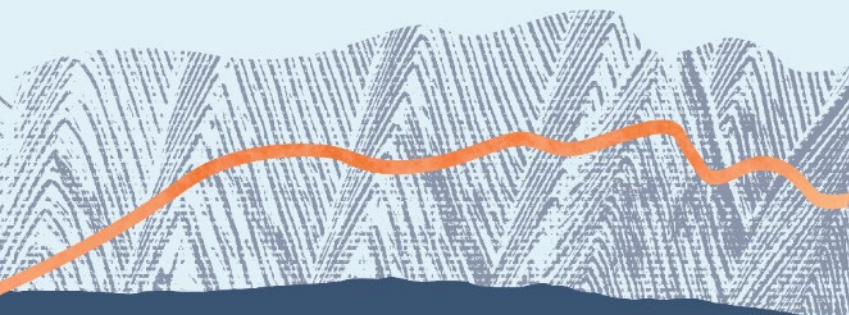


## Moturehu Double Island

- 10 occupied burrows between 1988-90
- Listening from 2130-2330hrs
- Listening from 0330-0500hrs
- 4 nights, 2 dawns

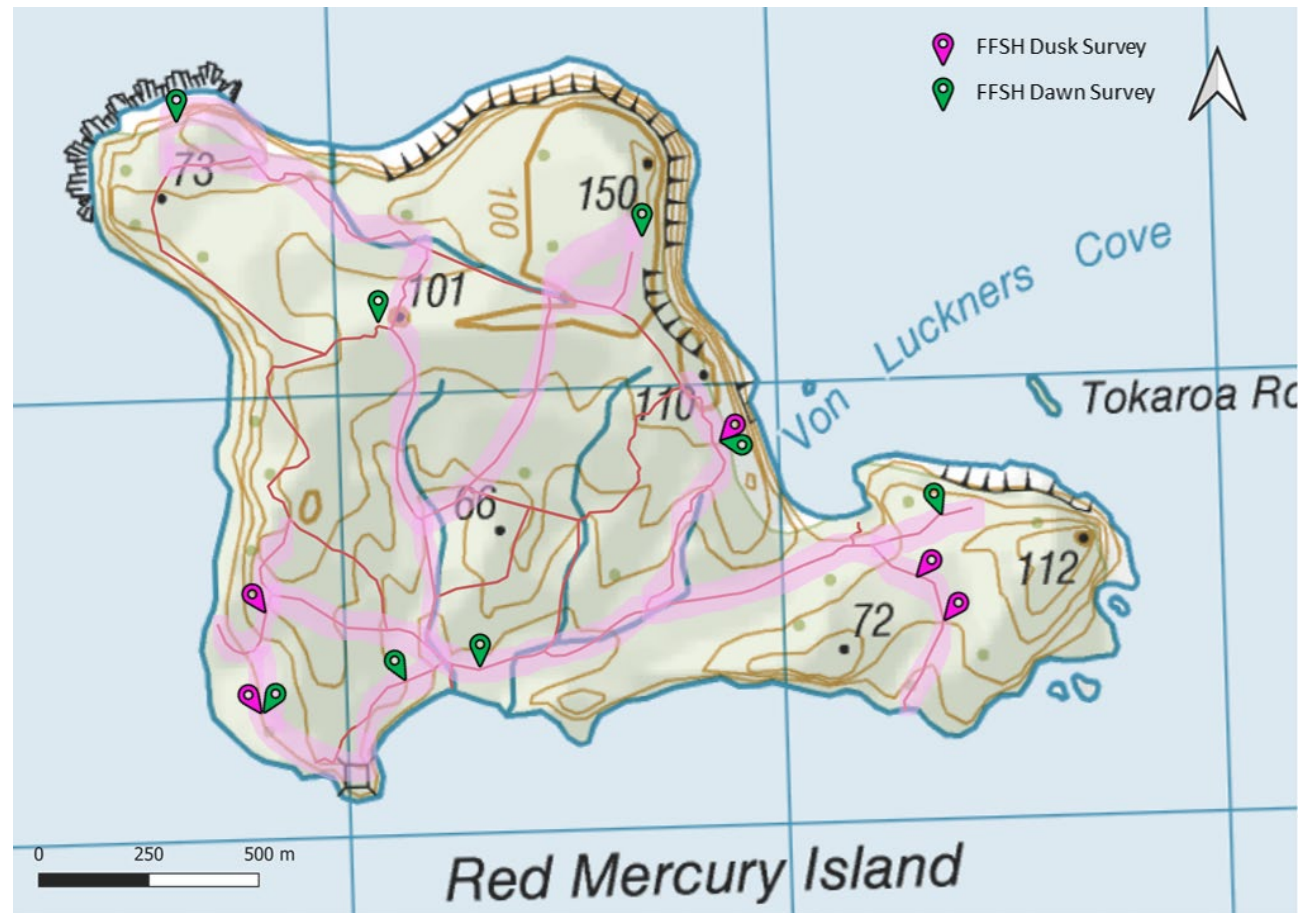


# Mercury Islands

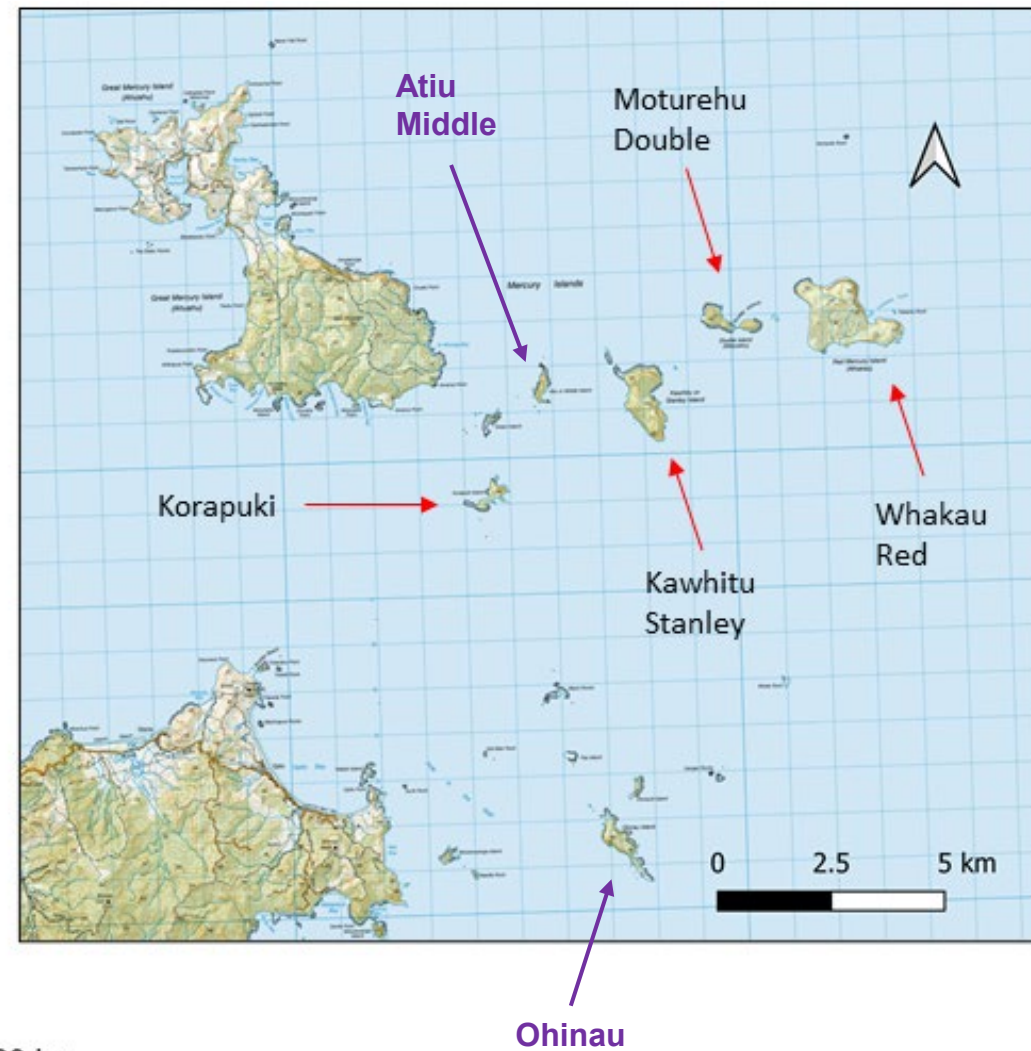
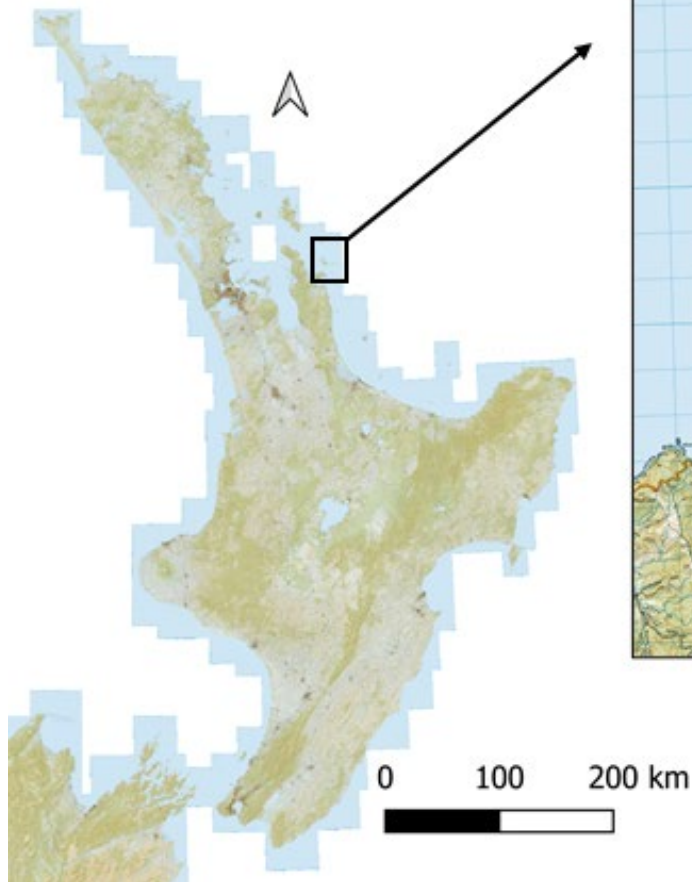
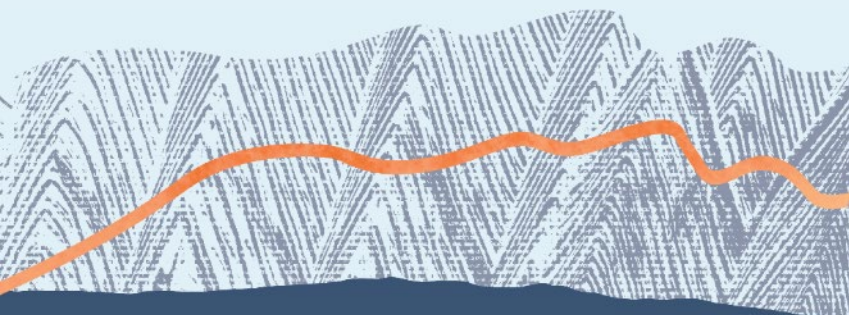


## Whakau Red Mercury Island

- noted as breeding with no figures for 1930s, 0 occupied burrows in 1990
- Listening from 2100-midnight
- Listening from 0330-0600hrs
- 6 nights, 5 dawns



# Mercury Islands





# Acknowledgements

- Korapuki and Moturehu Double: Chris Gaskin, Karen Baird, Kerry Lukies, Amy Blair, Edin Whitehead
- Kawhitu Stanley: Rachael Sagar, Jake Osborne, Steve Pilkington, Ben Gordon
- Whakau Red Mercury: Jamie Carey, Marie Everth, Troy McDonald, David Sagar, Iris Ronald, Pete Corson
- James Blackmore and DOC Whitianga
- Graeme Taylor and BCBC2020-25 funding



# References

- Korapuki: Hicks, G.R.F., McColl, H.P. Meads, M.J., Hardy, G.S., Roser, R.J. 1975. An ecological reconnaissance of Korapuki Island, Mercury Islands. *Notornis* 22(3): 195-220.
- Red: Skegg, P.D.G. 1963. Birds of the Mercury Islands group. *Notornis* 10(4): 143-168.
- All: Waugh, S.M., Tennyson, A.J.D., Taylor, G.A., Wilson, K.-J. 2013. Population sizes of shearwaters (*Puffinus* spp.) breeding in New Zealand, with recommendations for monitoring. *Tuhinga* 24: 159-204.