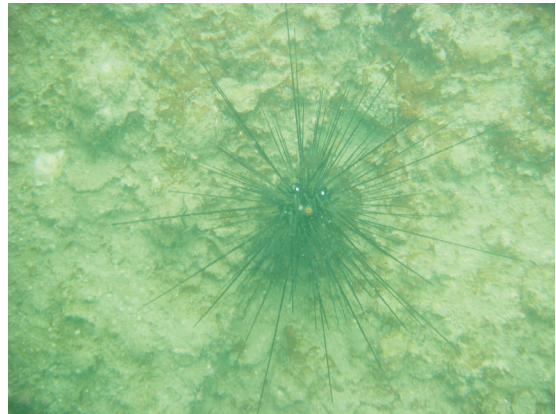


Anthocidaris crassispina on artificial seawall (large rock substrate with silt and remnants of oysters and barnacles).



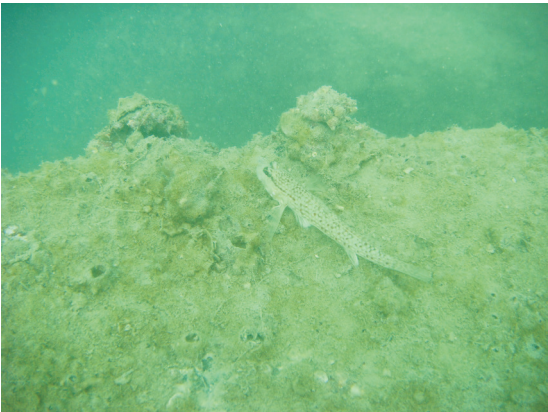
Diadema setosum on artificial seawall (large rock substrate with silt and remnants of oysters and barnacles).



Holothuria leucospilota



Chelonodon patoca



Istigobius diadema



Scarpaenopsis cirrhosa



Patch of smaller rocks atypical of the main large rock composition of the artificial seawall



Muddy bottom in the deep water of natural shoreline of T1.

Figure C1

Marine fauna and seabed condition recorded during the dive survey

FILE: 0077089q
DATE: 05/11/2008

Environmental
Resources
Management

