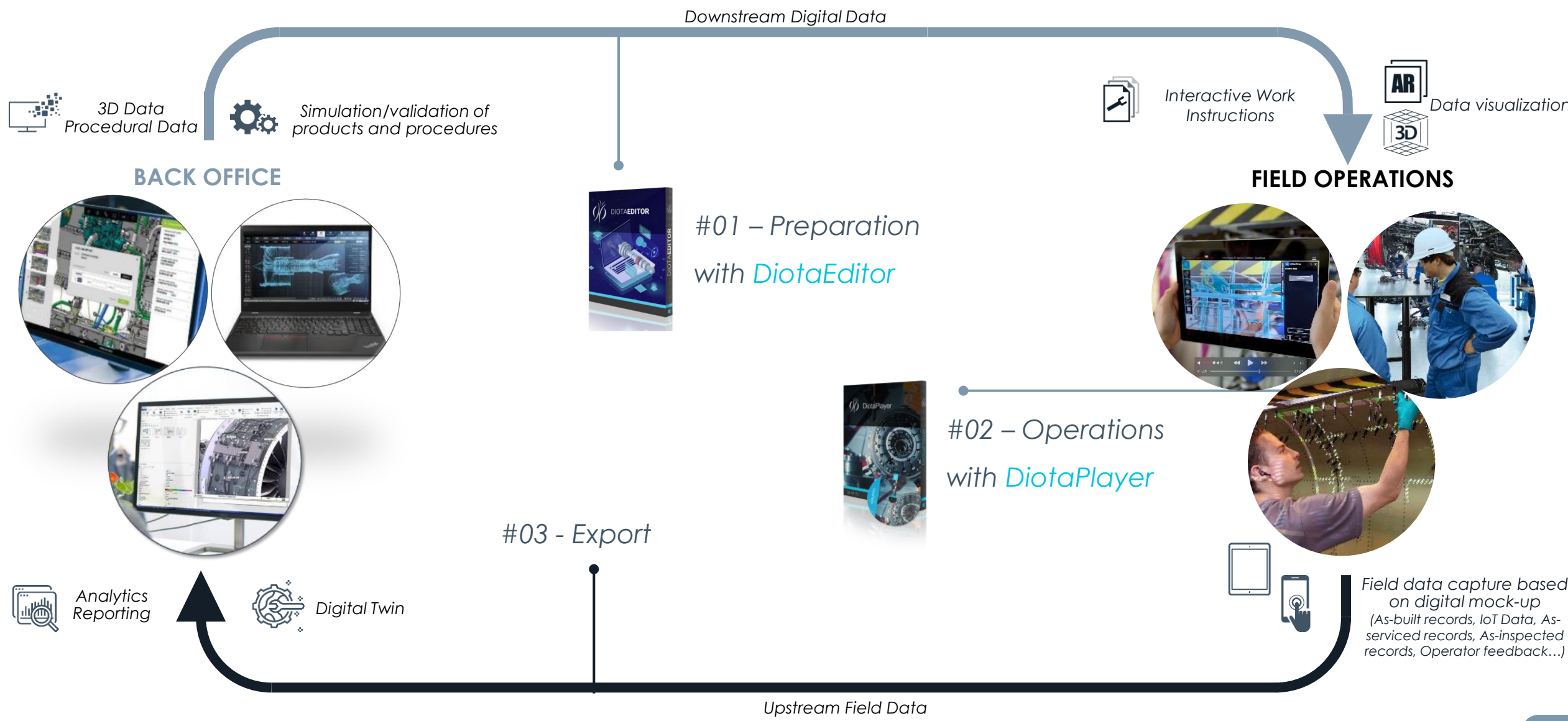


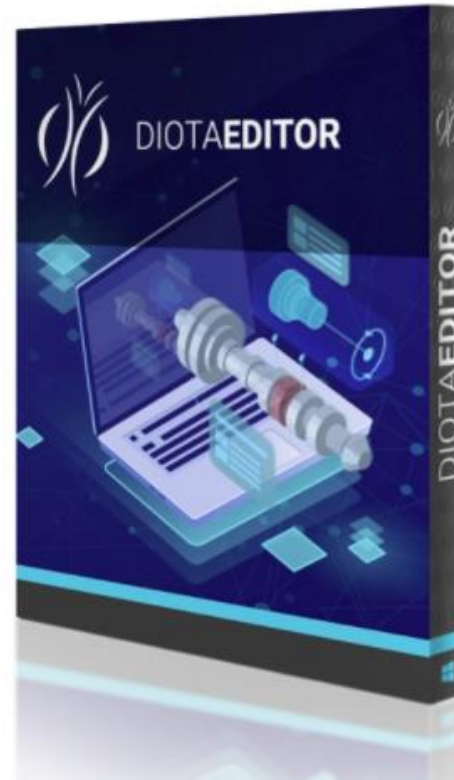
DiotaPlayer & DiotaEditor



| DiotaEditor & DiotaPlayer in the digital continuity



DiotaEditor



| DiotaEditor

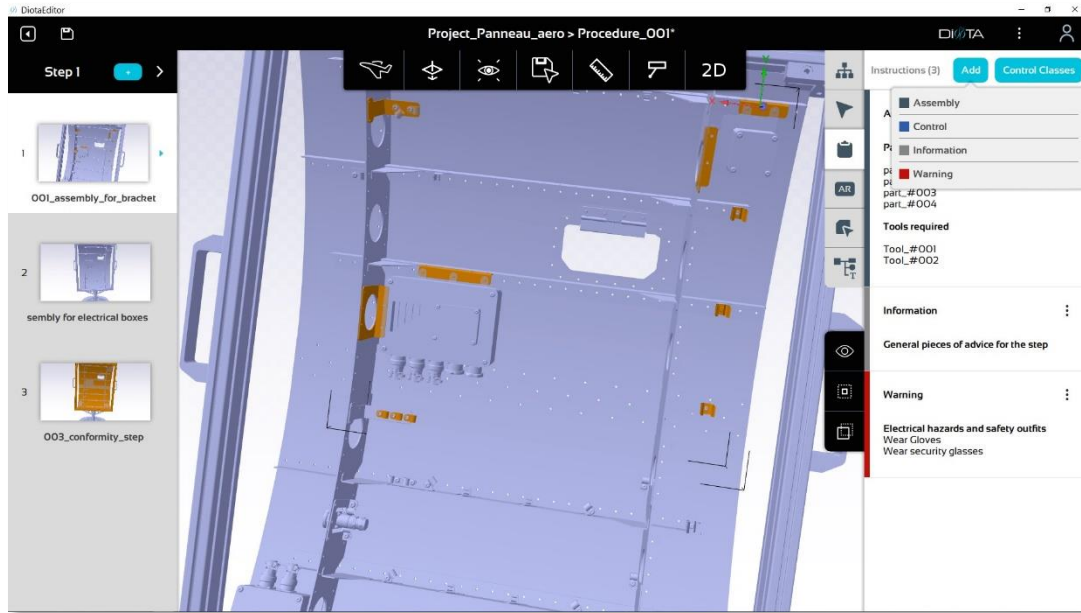


The **DiotaEditor** is a **highly efficient and intuitive editing environment for creating contextualized digital content** to optimize field operations.

Starting from CAD data, the Methods & Process technicians and engineers can easily **create step-by-step instructions for advanced operations** (e.g. control and conformity checks), and **link these instructions to the DMU**, thus supporting real world display of this content thanks to the unique augmented reality capabilities of the DiotaPlayer.

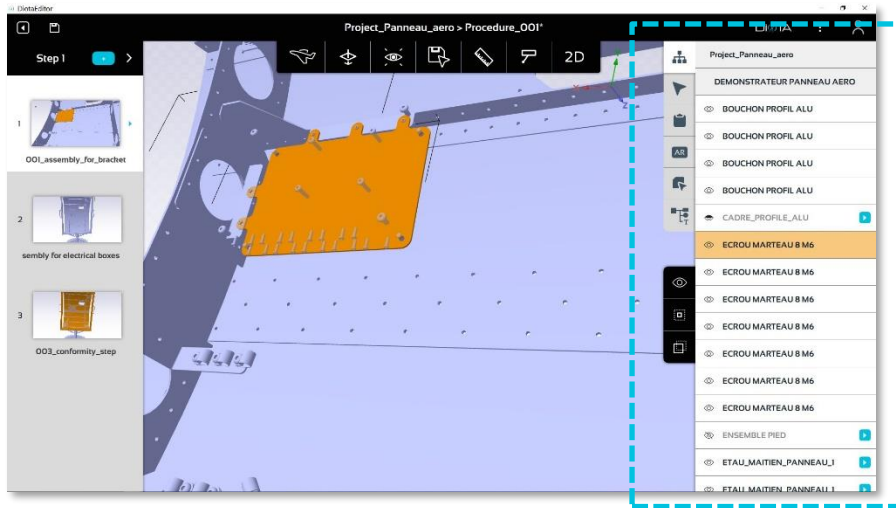
The DiotaEditor is a key tool for ensuring a strong digital continuity up to the shopfloor operations.

| DiotaEditor – Main features



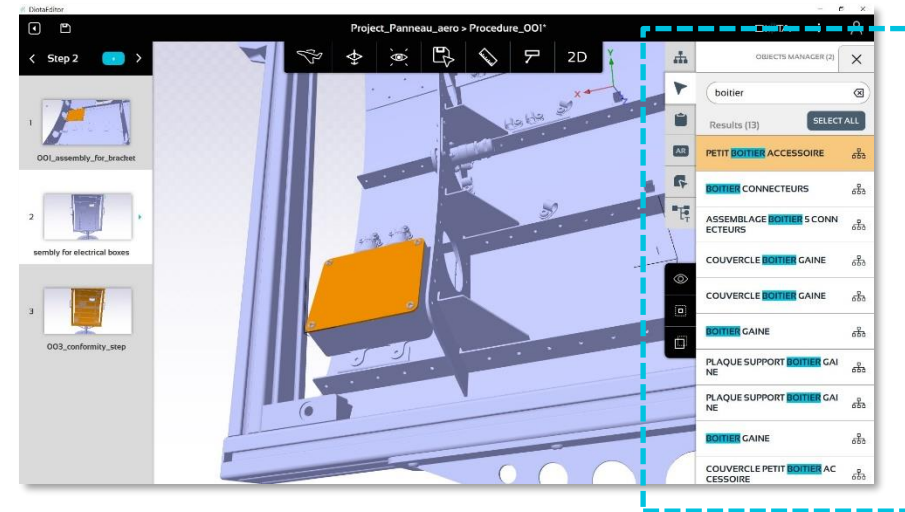
- Produce content from any major CAD data format (via Diota Exchange)
- Support for large DMU
- Simple and intuitive content creation workflows
- Rich content creation, from process to collaborative elements
- Content sharing between procedures
- Focused business content creation features (e.g. control and tracking)

DiotaEditor - Main Views



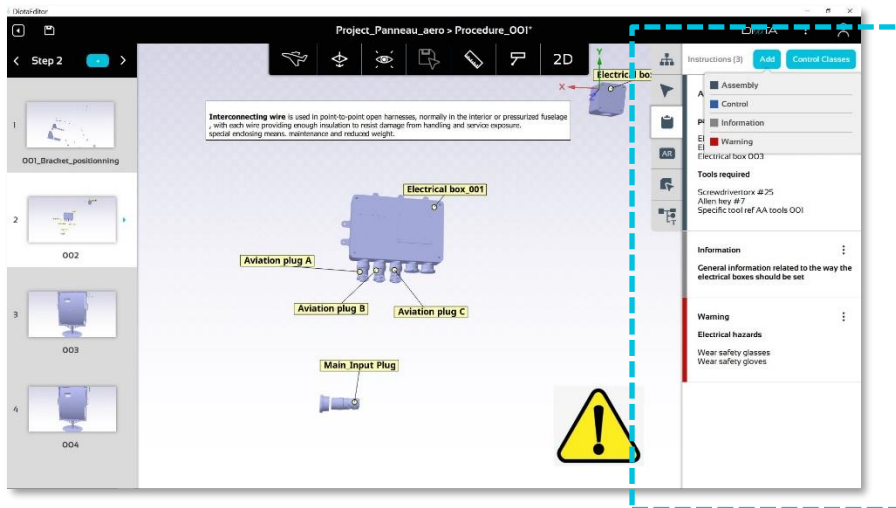
Scene tree view

- Find and select any part from the DMU scene tree in order to set the context of each step of the process



Object manager

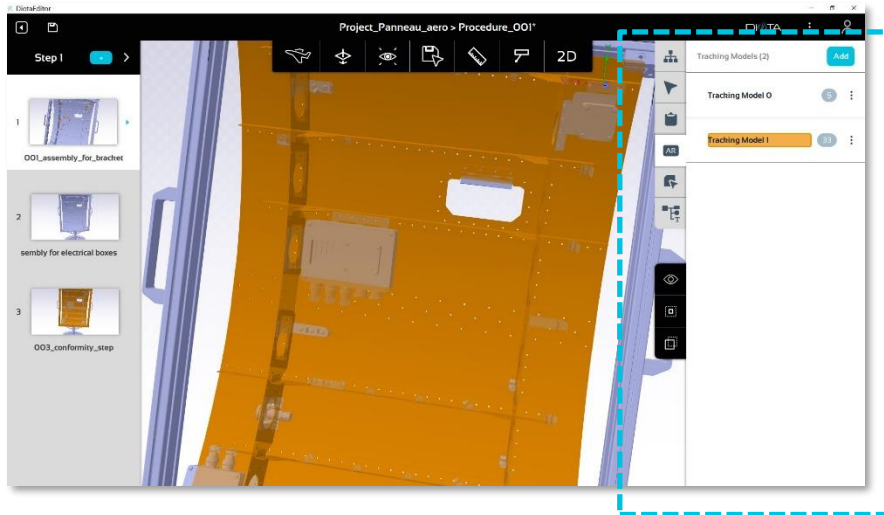
- Search and select objects/parts and related metadata



Create work instructions

- Add assembly, control, information or warning instructions on selected object
- Associate text or pre-defined control class

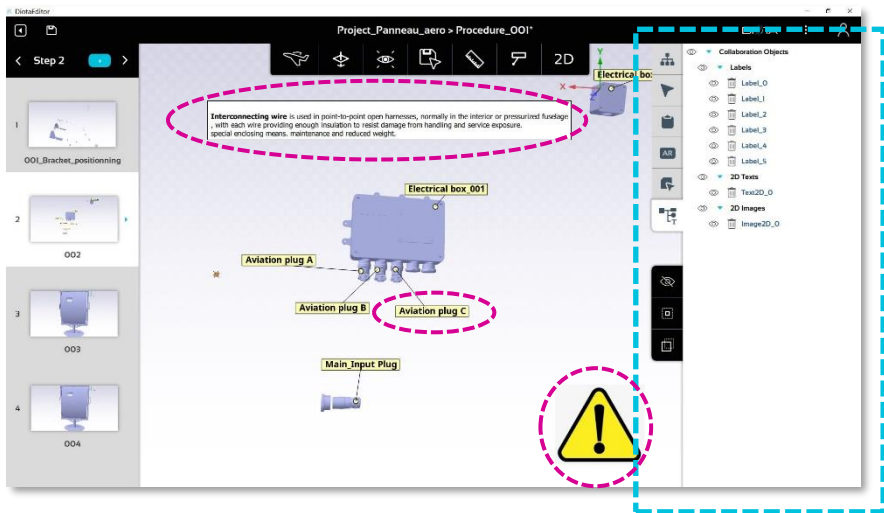
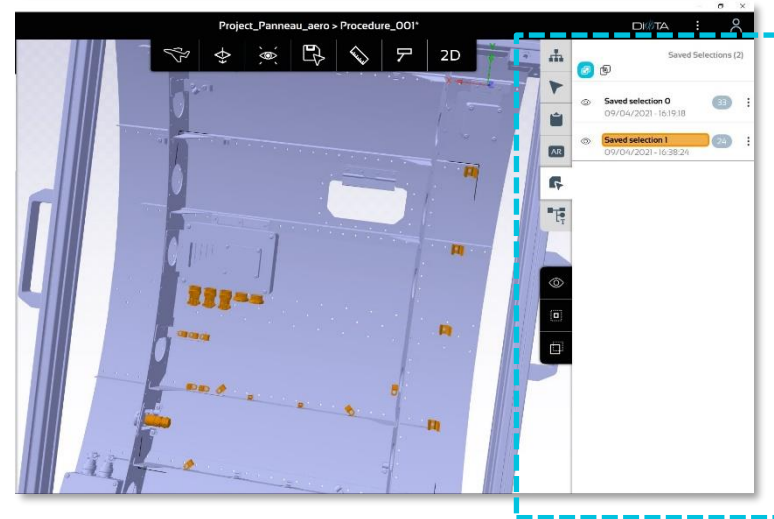
DiotaEditor - Main Views



- ◀ Set up augmented reality reference model (TM)
 - Define tracking model for each process step

Create saved selections to optimize your time

- Select one or several objects and create a saved selection set out of it. It can be used whenever needed.



- ◀ Enrich process steps with collaboration objects
 - Add & update elements such as labels, measurements, 2D images, 2D texts
 - Associate elements to relevant process step (hide/display)

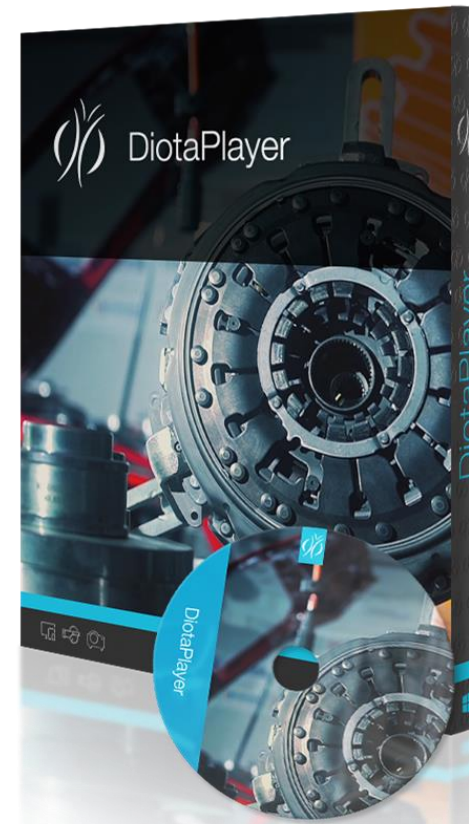
| DiotaEditor – Current compatible CAD formats



- ✓ CATPRODUCT / PART
- ✓ STEP
- ✓ 3DXML
- ✓ FBX
- ✓ OBJ
- ✓ STL
- ✓ JT
- ✓ IFC
- ✓ CREO (ASM/PRT)

For other CAD formats request please contact us.

DiotaPlayer



| DiotaPlayer



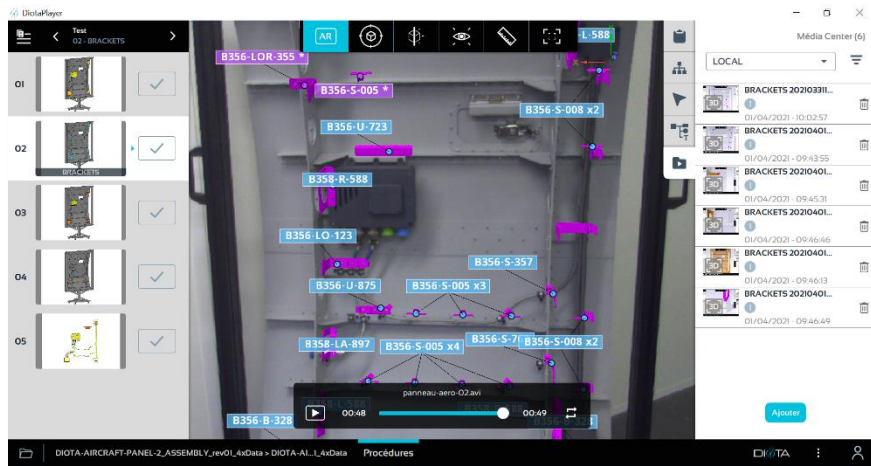
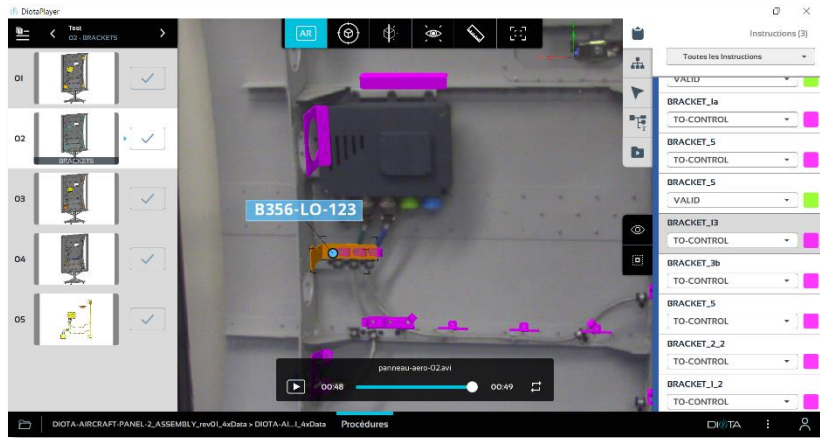
The *DiotaPlayer* is an easy-to-use **multi-purpose and multi-platform field app** allowing to both **visualize digital contents** and **capture various data from the field**. *DiotaPlayer* allows operators to efficiently carry out their assembly or control tasks and provide operational feedback for manufacturing, maintenance and inspection processes.

It integrates augmented reality technology to accurately overlay work instructions and the digital mock-up on real industrial parts.

DiotaPlayer provides assistance for defect detection, documentation and traceability.

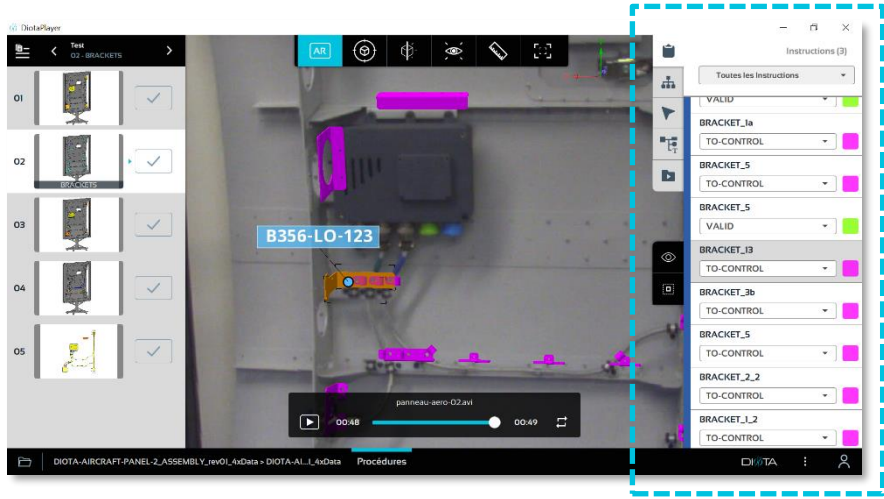
DiotaPlayer collects and stores digital field data for the engineering offices to efficiently improve processes, product design and traceability.

DiotaPlayer – Features



- Display of step-by-step digital work instructions
- Conformity check functionalities allowing to identify and characterize non-conformities with precision
- "Field Data Capture" and "Media Center" functionalities for the collection and enrichment of various data during field operations geo-localized on the digital model (photos, annotations, measurements, status...)
- "Data Export" functionalities allowing to export field data in the form of an automated reporting document or to analytics applications
- Hardware-agnostic platform

DiotaPlayer - Main Views



- Work instructions
- Display of step-by-step work instructions

- Find and select any part from the DMU scene tree in order to set the context of each step of the process

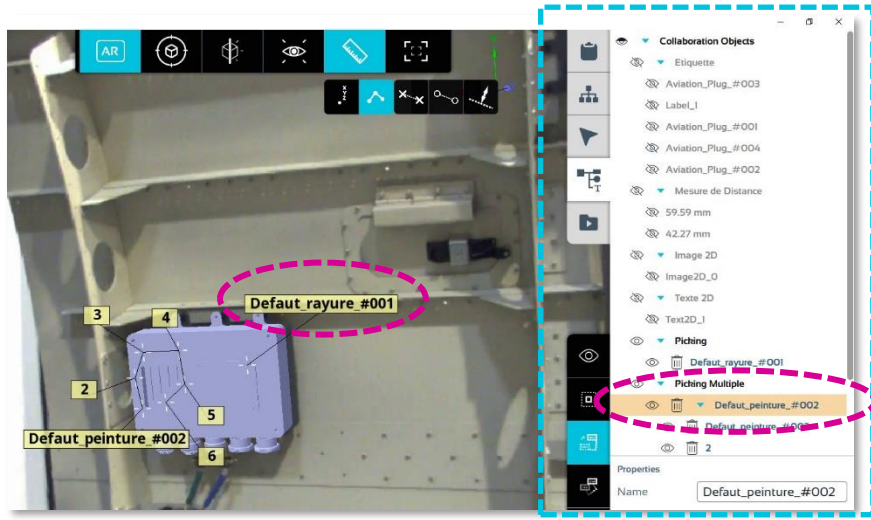


Scene tree

- Object manager
- Display of selection related information and metadata
 - Search filter on specific parts



DiotaPlayer - Main Views



Defect picking

- Simple note picking: simple defect report
- Polypicking: possibility to annotate wide areas

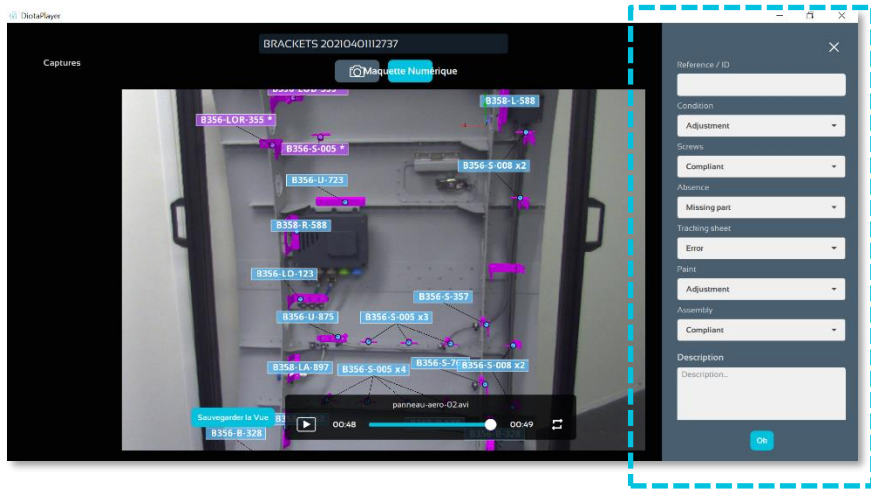
Media Center : list of groups of captures

- Collection of documented defects or assembly details
- Search filter to retrieve an already documented element



Media center details

- Details of the pictures from a group of captures and related information (location, measure, time...)
- Further details can be added to complement information in dedicated customizable fields
- Information exported in a database for further analysis



| DiotaPlayer – Use cases examples



- *Step-by-step work instructions for assembly tasks on complex equipment*
- *Display of quality control points for inspection purposes*
- *Projection on panel for assistance to element positioning before operations (riveting , pinning...)*
- *Inspection report with defect location for report to customer before proceeding to repair tasks*
- *Collection of field data on the “as-build” to feed digital twin*

Compatible Hardware Material

DO-Station

- Coming with a flexible arm that can integrate various industrial cameras, and a computer
- Highly customizable configuration: mobile or desk table, remote display, individual or group station, etc.

DO-Station Mobile



DO-Station Desktop



▲ Tablets

For operations:

- involving numerous interactions
- requiring a high-quality graphic rendering



▲ DiotaWand

- An ergonomic handle integrating an industrial camera
- Highly fitted for hard-to-reach areas



▲ DiotaProjector

- Projection of exhaustive information
- Operations on wide surfaces