



Government of **Western Australia**  
Department of **Fisheries**

# RECREATIONAL FISHING IN WESTERN AUSTRALIA

## NORTHERN FISH IDENTIFICATION GUIDE



Cover: Spangled emperor (*Lethrinus nebulosus*) Photo: Shannon Conway

Published by Department of Fisheries, Perth, Western Australia.

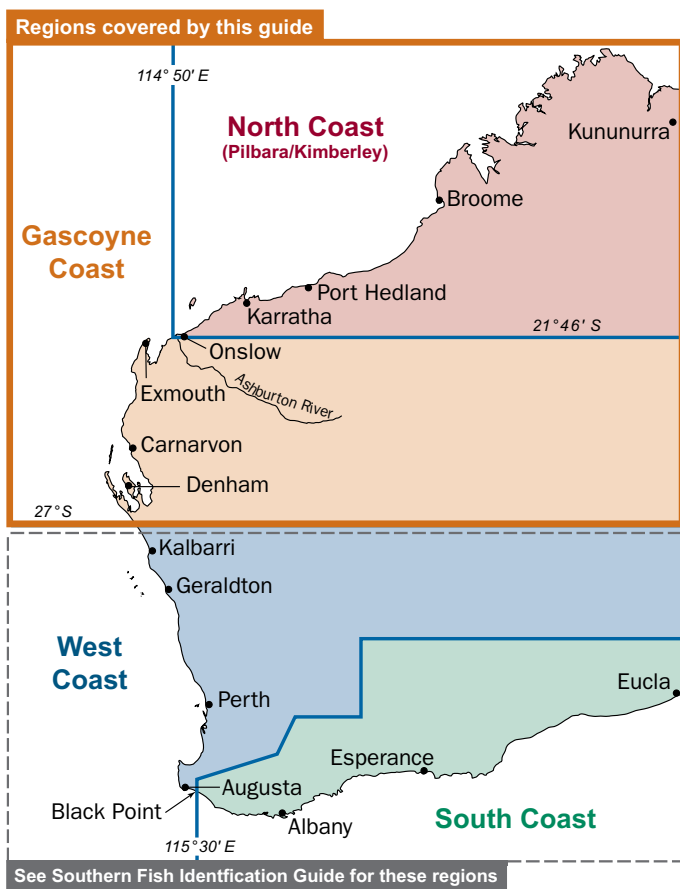
Fisheries Occasional Publication No. 87, March 2011.

ISSN: 1447 - 2058 ISBN: 978-1-921845-06-2

## ABOUT THIS GUIDE

This guide has been developed to help you identify the more common species within the Gascoyne and North Coast bioregions that you may encounter. The purpose of this recreational fishing guide is to greatly enhance consistent and accurate species identification.

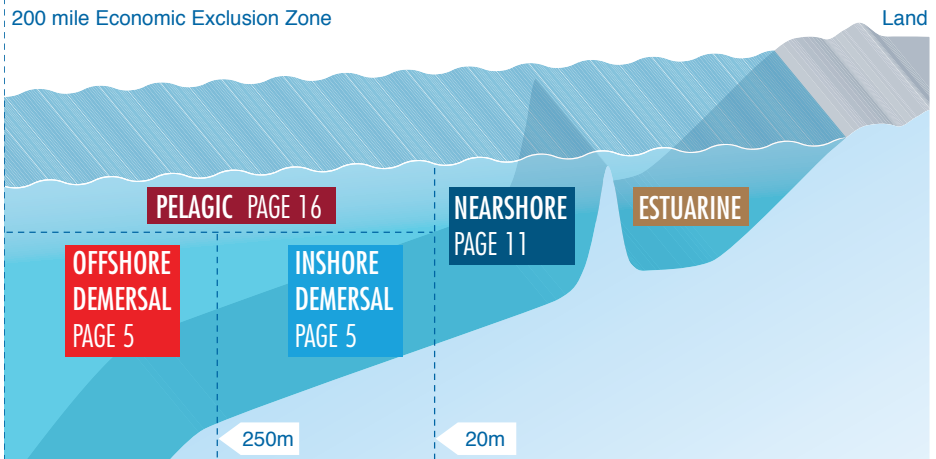
If you are unsure about a particular species (or if it is not in this guide), please discuss it with a representative of the Department of Fisheries, Western Australia. You can access additional information on the website [www.fish.wa.gov.au](http://www.fish.wa.gov.au)



# CONTENTS

<b>ABOUT THIS GUIDE .....</b>	<b>3</b>
<b>OFFSHORE DEMERSAL .....</b>	<b>5</b>
<b>INSHORE DEMERSAL.....</b>	<b>5</b>
<b>NEARSHORE.....</b>	<b>11</b>
<b>PELAGIC .....</b>	<b>16</b>
<b>SHARKS.....</b>	<b>19</b>
<b>CRUSTACEANS.....</b>	<b>20</b>
<b>INDEX OF COMMON NAMES.....</b>	<b>21</b>

Five broad ecological depth based habitats are recognised within each bioregion. Finfish species are listed in the habitat where they most commonly occur. Sharks and crustaceans are presented separately as they may occupy many habitats.



## OFFSHORE DEMERSAL



**Eightbar grouper**  
(Grey banded rockcod, eightbar cod)  
*Hyporthodus octofasciatus*



**Bass groper**  
*Polyprion americanus*

Juvenile



**Ruby snapper**  
*Etelis carbunculus*



**Flame snapper**  
*Etelis coruscans*

## INSHORE DEMERSAL



**Barramundi cod**  
*Cromileptes altivelis*



**Gold spotted rockcod**  
(Estuary cod, slimy cod, greasy grouper)  
*Epinephelus coioides*



**Black spotted rockcod**  
(Malabar cod, estuary cod, slimy cod)  
*Epinephelus malabaricus*



**Rankin cod**  
(White spotted rockcod)  
*Epinephelus multinotatus*

INSHORE DEMERSAL (CONTINUED)



**Potato rockcod** *PROTECTED SPECIES*  
(Potato cod)  
*Epinephelus tukula*



**Duskytail grouper**  
(Spotted trout, trout cod)  
*Epinephelus bleekeri*



**Queensland grouper** *PROTECTED SPECIES*  
(Giant grouper, Queensland grouper)  
*Epinephelus lanceolatus*



**Common coral trout**  
*Plectropomus leopardus*



**Yellow spotted rockcod**  
(Spotted cod, honeycomb cod)  
*Epinephelus areolatus*



**Barcheek coral trout**  
(Inshore coral trout)  
*Plectropomus maculatus*



**Frostback rockcod**  
(Spotted cod, honeycomb cod, frostback cod)  
*Epinephelus bilobatus*



**Yellowedge coronation trout**  
(Coronation trout, lunartail trout)  
*Variola louti*



**Robinsons' seabream**  
(Robinsons' bream, Robinsons' perch)  
*Gymnocranius grandoculis*



**Redspot emperor**  
(Pink-eared emperor)  
*Lethrinus lentjan*



**Bluespotted emperor**  
(Lesser spangled emperor)  
*Lethrinus punctulatus*



**Redthroat emperor**  
(Sweetlip emperor, redthroat)  
*Lethrinus miniatus*



**Yellowtail emperor**  
*Lethrinus atkinsoni*



**Spangled emperor**  
(North west snapper)  
*Lethrinus nebulosus*



**Grass emperor**  
(Black snapper, blue-lined emperor,  
grass snapper, tricky snapper)  
*Lethrinus laticaudis*



**Longnose emperor**  
(Long-nosed emperor)  
*Lethrinus olivaceus*

**INSHORE DEMERSAL (CONTINUED)**



**Rosy threadfin bream**  
*Nemipterus furcosus*



**Brownstripe snapper**  
(Flagfish)  
*Lutjanus vitta*



**Mangrove jack**  
(Jacks)  
*Lutjanus argentimaculatus*



**Stripey snapper**  
(Spanish flag, stripey seaperch)  
*Lutjanus carponotatus*



**Moses snapper**  
(Moses perch, fingermark bream)  
*Lutjanus russelli*



**Crimson snapper**  
(Crimson seaperch, red snapper)  
*Lutjanus erythropterus*



**Darktail snapper**  
(Maroon seaperch, dark tailed seaperch)  
*Lutjanus lemniscatus*



**Golden snapper**  
(Fingermark seaperch)  
*Lutjanus johnii*





**Saddletail snapper**  
(Scarlet seaperch)  
*Lutjanus malabaricus*



**Rosy snapper**  
(Rosy jobfish, crimson jobfish)  
*Pristipomoides filamentosus*



**Maori snapper**  
(Maori seaperch)  
*Lutjanus rivulatus*



**Sharptooth snapper**  
(Sharptooth jobfish)  
*Pristipomoides typus*



**Red emperor**  
(Reds)  
*Lutjanus sebae*



**Chinamanfish**  
(Chinaman)  
*Symphorus nematophorus*

Juvenile



**Goldband snapper**  
*Pristipomoides multidens*



**Humphead Maori wrasse** *PROTECTED SPECIES*  
*Cheilinus undulatus*

INSHORE DEMERSAL (CONTINUED)



**Goldspot pigfish**  
(Goldspot foxfish)  
*Bodianus perditio*



**Blackspot tuskfish**  
(Bluebone)  
*Choerodon schoenleinii*



**Baldchin groper**  
(Baldies)  
*Choerodon rubescens*



**Purple tuskfish**  
(Grass tuskfish, bluebone)  
*Choerodon cephalotes*



**Bluespotted tuskfish**  
*Choerodon cauteroma*



**Bluebarred parrotfish**  
*Scarus ghobban*



**Blue tuskfish**  
(Bluebone)  
*Choerodon cyanodus*



**Pink snapper**  
(Snapper, pinkie)  
*Pagrus auratus*

NEARSHORE



**Frypan bream**  
*Argyrops spinifer*



**Barramundi**  
*Lates calcarifer*



**Painted sweetlips**  
(Slatey bream, sand snapper)  
*Diagramma labiosum*



**Chinaman cod**  
(Charlie court)  
*Epinephelus rivulatus*



**Pearl perch**  
*Glaucosoma buergeri*



**Common dart**  
*Trachinotus botla*



**West Australian dhufish**  
(Dhufish)  
*Glaucosoma hebraicum*



**Longtom**  
Family Belontiidae



**Mulloway**  
*Argyrosomus japonicus*



**Golden trevally**  
(Banded trevally)  
*Gnathanodon speciosus*



**Black jewfish**  
(Northern mullet)  
*Protonibea diacanthus*



**Turrum**  
(Gold-spotted trevally)  
*Carangoides fulvoguttatus*



**Queenfish**  
(Queenie)  
*Scomberoides spp.*



**Blotched javelin**  
(Blotched javelinfish)  
*Pomadasys maculatus*



**Giant trevally**  
(GT)  
*Caranx ignobilis*



**Barred javelin**  
(Spotted javelinfish)  
*Pomadasys kaakan*



**Silver toadfish** *POISONOUS*  
(North-West blowfish)  
*Lagocephalus scleratus*



**Oriental bonito**  
*Sarda orientalis*



**Tripletail**  
*Lobotes surinamensis*



**Tailor**  
*Pomatomus saltatrix*



**Blue threadfin**  
(Bluenose threadfin salmon, blue salmon)  
*Eleutheronema tetradactylum*



**Giant sea catfish**  
(Giant salmon catfish)  
*Arius thalassinus*



**King threadfin**  
(Giant threadfin salmon, giant threadfin)  
*Polydactylus macrochir*



**Western butterfish**  
(Butteries)  
*Pentapodus vitta*

## NEARSHORE (CONTINUED)



**Sea mullet**  
*Mugil cephalus*



**Tarwhine**  
(Silver bream)  
*Rhabdosargus sarba*



**Bluetail mullet**  
*Valamugil buchanani*



**Western yellowfin bream**  
(Yellowfin bream)  
*Acanthopagrus latus*



**Diamondscale mullet**  
*Liza vaigiensis*



**Northwest black bream**  
(Pikey bream)  
*Acanthopagrus palmaris, Acanthopagrus berda*



**Greenback mullet**  
*Liza subviridis*



**Western sooty grunter**  
(Sooty grunter)  
*Hephaestus jenkinsi*



**Yellowfin whiting**  
(Western sand whiting, yellowfinned whiting,  
silver whiting)  
*Sillago schomburgkii*



**Yellowtail flathead**  
(Bar-tailed flathead)  
*Platycephalus endrachtensis*



**Goldenline whiting**  
(Golden-lined whiting)  
*Sillago analis*



**Northern sand flathead**  
(Sand flathead, flag tailed flathead)  
*Platycephalus arenarius*



**Western School whiting**  
(School whiting, sand whiting)  
*Sillago vittata*



**Silver cobbler**  
(Lake Argyle catfish, Ord River catfish)  
*Arius midgleyi*



**Samsonfish**  
(Sambo)  
*Seriola hippos*



**Spanish mackerel**  
(Narrow-barred Spanish mackerel)  
*Scomberomorus commerson*



**Amberjack**  
*Seriola dumerili*



**Shark mackerel**  
(Scaly mackerel, salmon mackerel)  
*Grammatorcynus bicarinatus*



**Yellowtail kingfish**  
(Kingfish, kingie)  
*Seriola lalandi*



**Grey mackerel**  
(Broad barred spanish mackerel,  
broad banded mackerel)  
*Scomberomorus semifasciatus*



**Mahi mahi**  
(Dolphinfish, dorado)  
*Coryphaena hippurus*



**School mackerel**  
(Queensland school mackerel, doggie)  
*Scomberomorus queenslandicus*





**Spotted mackerel**  
(Australian spotted mackerel)  
*Scomberomorus munroi*



**Northern bluefin tuna**  
*Thunnus orientalis*



**Cobia**  
(Black kingfish)  
*Rachycentron canadum*



**Mackerel tuna**  
(Jack mackerel, kawakawa)  
*Euthynnus affinis*



**Wahoo**  
*Acanthocybium solandri*



**Dogtooth tuna**  
(Doggie)  
*Gymnosarda unicolor*



**Yellowfin tuna**  
*Thunnus albacares*



**Great barracuda**  
*Sphyrna barracuda*

PELAGIC (CONTINUED)



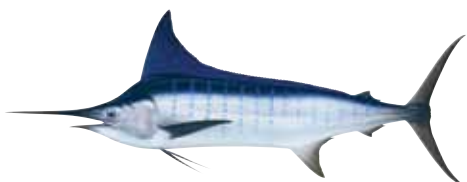
**Sailfish**  
*Istiophorus platypterus*



**Black marlin**  
*Makaira indica*



**Blue marlin**  
*Makaira mazara*



**Striped marlin**  
*Tetrapterus audax*

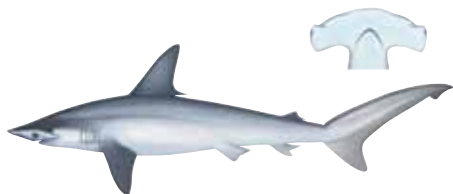
# SHARKS



**Tiger shark**  
*Galeocerdo cuvier*



**Sandbar shark**  
(Thickskin shark, northern whaler, sand shark)  
*Carcharhinus plumbeus*



**Hammerhead sharks**  
*F. Sphyrnidae*



**Sawfish** *PROTECTED SPECIES*  
Family Pristidae



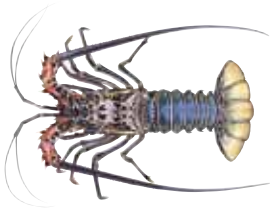
**Whaler sharks**  
Numerous  
*Carcharhinus spp.*



**Western rock lobster**  
*Panulirus cygnus*



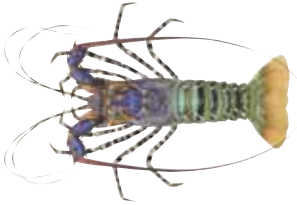
**Brown mud crab**  
*Scylla olivacea*



**Painted rock lobster**  
(Tropical rock lobster, green rock lobster)  
*Panulirus versicolor*



**Green mud crab**  
*Scylla serrata*



**Ornate rock lobster**  
*Panulirus ornatus*



**Redclaw**  
(Queensland red claw crayfish)  
*Cherax quadricarinatus*



**Blue swimmer crab**  
(Blue manna, blue crab)  
*Portunus pelagicus*



**Cherabin**  
(Freshwater prawns)  
*Macrobrachium spp.*

## INDEX OF COMMON NAMES

### A

Amberjack..... 16

### B

Baldchin groper..... 10

Barcheek coral trout..... 6

Barramundi ..... 11

Barramundi cod..... 5

Barred javelin..... 12

Bass groper ..... 5

Black jewfish..... 12

Black marlin..... 18

Black spotted rockcod ..... 5

Blackspot tuskfish..... 10

Blotched javelin..... 12

Bluebarred parrotfish..... 10

Blue marlin ..... 18

Bluespotted emperor ..... 7

Bluespotted tuskfish ..... 10

Blue swimmer crab..... 20

Bluetail mullet..... 14

Blue threadfin ..... 13

Blue tuskfish..... 10

Brown mud crab ..... 20

Brownstripe snapper..... 8

### C

Cherabin..... 20

Chinaman cod..... 11

Chinamanfish..... 9

Cobia ..... 17

Common coral trout..... 6

Common dart..... 11

Crimson snapper..... 8

### D

Darktail snapper..... 8

Diamondscale mullet..... 14

Dogtooth tuna..... 17

Duskytail grouper ..... 6

### E

Eightbar grouper..... 5

### F

Flame snapper ..... 5

Frostback rockcod ..... 6

Frypan bream..... 11

### G

Giant sea catfish..... 13

Giant trevally..... 12

Goldband snapper ..... 9

Goldenline whiting ..... 15

Golden snapper..... 8

Golden trevally ..... 12

Goldspot pigfish ..... 10

Gold spotted rockcod ..... 5

Grass emperor ..... 7

Great barracuda ..... 17

Greenback mullet ..... 14

Green mud crab ..... 20

Grey mackerel ..... 16

### H

Hammerhead sharks ..... 19

Humphead Maori wrasse

**PROTECTED SPECIES** ..... 9

### K

King threadfin ..... 13

### L

Longnose emperor ..... 7

Longtom ..... 11

## INDEX OF COMMON NAMES (CONTINUED)

### M

Mackerel tuna .....	17
Mahi mahi .....	16
Mangrove jack.....	8
Maori snapper.....	9
Moses snapper.....	8
Mulloway.....	12

### N

Northern bluefin tuna .....	17
Northern sand flathead.....	15
Northwest black bream.....	14

### O

Oriental bonito .....	13
Ornate rock lobster.....	20

### P

Painted rock lobster .....	20
Painted sweetlips .....	11
Pearl perch .....	11
Pink snapper.....	10
Potato rockcod <b>PROTECTED SPECIES</b> .....	6
Purple tuskfish.....	10

### Q

Queenfish.....	12
Queensland groper <b>PROTECTED SPECIES</b> .	6

### R

Rankin cod .....	5
Redclaw.....	20
Red emperor.....	9
Redspot emperor .....	7
Redthroat emperor .....	7
Robinsons' seabream.....	7
Rosy snapper.....	9
Rosy threadfin bream .....	8
Ruby snapper.....	5

### S

Saddletail snapper .....	9
Sailfish .....	18
Samsonfish .....	16
Sandbar shark .....	19
Sawfish <b>PROTECTED SPECIES</b> .....	19
School mackerel.....	16
Sea mullet.....	14
Shark mackerel .....	16
Sharptooth snapper.....	9
Silver cobbler.....	15
Silver toadfish <b>POISONOUS</b> .....	13
Spangled emperor .....	7
Spanish mackerel.....	16
Spotted mackerel .....	17
Striped marlin .....	18
Stripey snapper.....	8

### T

Tailor .....	13
Tarwhine .....	14
Tiger shark .....	19
Tripletail.....	13
Turrum.....	12

### W

Wahoo .....	17
West Australian dhufish .....	11
Western butterfish.....	13
Western rock lobster .....	20
Western School whiting.....	15
Western sooty grunter .....	14
Western yellowfin bream .....	14
Whaler sharks.....	19

### Y

Yellowedge coronation trout .....	6
Yellowfin tuna.....	17
Yellowfin whiting.....	15

Yellow spotted rockcod ..... 6  
Yellowtail emperor ..... 7  
Yellowtail flathead ..... 15  
Yellowtail kingfish ..... 16

Before you leave, tell someone about your boating plans, and if these change during the voyage, notify them immediately. Always report in when you return.

The information in this guide is current at the time of the date of printing, but may change. For the most up-to-date information on fisheries and fishing rules in plain English, check the Department of Fisheries' website at **www.fish.wa.gov.au** or contact the Department before going fishing.

The latest version of each brochure is available for download in PDF format from the website. For legislation, a link from the website will take you to the State Law Publisher.

**Produced for the Survey of Recreational  
Fishing in Western Australia.**



**DEPARTMENT OF FISHERIES – HEAD OFFICE**

3rd Floor, The Atrium,  
168 St George's Terrace, Perth 6000  
Ph: (08) 9482 7333 Fax: (08) 9482 7389  
Website: **www.fish.wa.gov.au**  
e-mail: [headoffice@fish.wa.gov.au](mailto:headoffice@fish.wa.gov.au)  
ABN: 55 689 794 771