

# MOTORITIES COLLECTION

2023



FROM CAR  
TO BOAT

For four decades, Focal has been creating unique sounding high-end speaker drivers and acoustic loudspeakers. The brand's values are innovation and performance, excellence and pleasure. We are renowned the world over for our exclusive technologies. The result of this technological heritage is sound reproduction imbued with clarity, power and a natural quality, presenting you with the best products in their category. With our Motorities Collection, we invite you to combine the pleasure of driving and sailing with the pleasure of pure sound. All aboard for some exceptional listening experiences.

**01.**  
UTOPIA M

7



**02.**  
K2 POWER M

13



**03.**  
K2 POWER

21



**04.**  
FLAX EVO

27



**05.**  
SLATEFIBER

35



**06.**  
POLYGLASS

41



**07.**  
ACCESS

47



**08.**  
UNIVERSAL

55



**09.**  
AUDITOR

63



**10.**  
SUBWOOFERS

71



**11.**  
AMPLIFIERS &  
ACCESSORIES

77



---

# 01. UTOPIA M

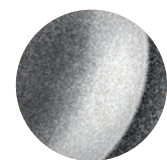
Simply excellent

The quintessence of Focal expertise and cutting-edge technology, the Utopia M product line takes sound excellence to a whole new level. The specially designed chassis is a subtle mix of tradition, performance and elegance in true French style. By choosing each speaker driver in the range based on your vehicle and your needs, you can build your own audio system for a fully bespoke set-up.

---







'M'-shaped  
'W' sandwich cone



Designer  
bowl



TMD®  
surround



Neodymium  
magnet



'M'-shaped Beryllium  
tweeter



Elegant,  
designed grille





**TBM**

**3.5WM**

**6 WM**

**8 WM**

	<b>TBM</b>	<b>3.5WM</b>	<b>6 WM</b>	<b>8 WM</b>
<b>Type</b>	Tweeter	Midrange	Woofer	Woofer
<b>Diameter</b>	-	3½" (87.5mm)	6½" (165mm)	8" (200mm)
<b>Cone</b>	'M'-shaped pure Beryllium dome	'M'-profile 'W'	'M'-profile 'W'	'M'-profile 'W'
<b>Surround technology</b>	Tuned Mass Damper (TMD®)	Tuned Mass Damper (TMD®)	Tuned Mass Damper (TMD®)	Tuned Mass Damper (TMD®)
<b>Motor</b>	Neodymium	Neodymium	Neodymium	Neodymium
<b>Mounting depth</b>	⅝" (9mm)	1¼" (31mm)	2" (51.5mm)	2⅛" (52mm)
<b>Voice coil diameter</b>	1" (25m)	1¾" (45mm)	3⅞" (80mm)	3⅞" (80mm)
<b>Impedance</b>	4Ω	4Ω	4Ω	4Ω
<b>Max. power</b>	200W	100W	200W	200W
<b>Nom. power</b>	20W RMS	50W RMS	100W RMS	100W RMS
<b>Sensitivity (2.83 V/1 m)</b>	95dB	88dB	91.5dB	91.8dB
<b>Frequency response</b>	1,5kHz - 50kHz	200Hz - 10kHz	60Hz - 6kHz	45Hz - 5kHz
<b>Suggested load volume</b>	-	-	-	-
<b>Accessories</b>	Supplied mounting brackets	Optional grille	Optional grille	Optional grille



**10WM**

<b>Type</b>	Subwoofer
<b>Diameter</b>	10" (250mm)
<b>Cone</b>	'M'-profile 'W'
<b>Surround technology</b>	-
<b>Motor</b>	Neodymium
<b>Mounting depth</b>	4¼" (108mm)
<b>Voice coil diameter</b>	Dual voice coil 4¾" (120mm)
<b>Impedance</b>	2 x 4Ω
<b>Max. power</b>	800W
<b>Nom. power</b>	400W RMS
<b>Sensitivity (2.83 V/1 m)</b>	87.5dB
<b>Frequency response</b>	25Hz - 800Hz
<b>Suggested load volume</b>	Sealed enclosure: 0.35 to 0.52 cu ft
<b>Accessories</b>	-



**UTOPIA PASSIVE 165 W-XP**

<b>Type</b>	2-way component kit
<b>Diameter</b>	6½" (165mm)
<b>Cone</b>	Composite 'W' sandwich
<b>Surround technology</b>	Tuned Mass Damper (TMD®)
<b>Motor</b>	Ferrite
<b>Mounting depth</b>	2⅞" (74mm)
<b>Voice coil diameter</b>	1¼" (32mm)
<b>Tweeter</b>	Pure Beryllium inverted dome
<b>Crossover</b>	Separated: 12/18dB bi-amp
<b>Adjustable tweeter level</b>	+3; 0; -3dB/oct
<b>Impedance</b>	2Ω
<b>Max. power</b>	200W
<b>Nom. power</b>	100W RMS
<b>Sensitivity (2.83 V/1 m)</b>	93dB
<b>Frequency response</b>	60Hz - 40kHz
<b>Accessories</b>	Grilles included



**3.5" GRILLE**

Optional 'M' profile aluminium ring



**6" GRILLE**

Optional 'M' profile aluminium ring



**8" GRILLE**

Optional 'M' profile aluminium ring



# 02.

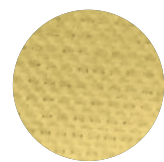
## K2 POWER M

Power and precision in style

Iconic K2 cone, 'M' profile, TMD® surround, etc.: Focal has combined several of its finest technologies to create K2 Power M. These speaker drivers are characterised by power, precision and compact design, offering unparalleled musicality and pure high-fidelity in-car sound. The brand-new FRAK tweeter brings unprecedented dynamics to your installation; it combines perfectly with the other products from the range for a unique sonic experience and 'à la carte' installation.







'M'-profile  
K2 cone



Aluminium  
frame



TMD®  
surround



Neodymium  
magnet



FRAK  
Tweeter



'M'  
grille







### FRAK



### 3 KM



### 6.5 KM



### SUB 5 KM

Type	Tweeter	Medium	Woofer
Diameter	1¼" (32mm)	3" (80mm)	6½" (165mm)
Cone	'M'-shaped Aluminium-Magnesium	K2 sandwich 'M'-profile	K2 sandwich 'M'-profile
Surround technology	Tuned Mass Damper (TMD*)	Tuned Mass Damper (TMD*)	Tuned Mass Damper (TMD*)
Motor	Neodymium	Neodymium	Ferrite
Mounting depth	¾" (19.5mm)	1½" (27.3mm)	2½" (54mm)
Voice coil diameter	1" (25mm)	1⅝" (35mm)	2⅜" (60mm)
Impedance	4Ω	4Ω	4Ω
Max. power	150W	120W	240W
Nom. power	25W RMS	60W RMS	120W RMS
Sensitivity (2.83 V/1 m)	91dB	89dB	92.5dB
Frequency response	600Hz - 32kHz	200Hz - 9kHz	50Hz - 5kHz
Suggested load volume	-	-	-
Accessories	Mounting accessories and grilles included	Optional grille	Optional grille

Type	Subwoofer
Diameter	5" (145mm)
Cone	K2 sandwich 'M'-profile
Surround technology	Catenary profile
Motor	Ferrite
Mounting depth	2⅜" (69mm)
Voice coil diameter	2⅜" (60mm)
Impedance	4Ω
Max. power	400W
Nom. power	200W RMS
Sensitivity (2.83 V/1 m)	86dB
Frequency response	35Hz - 250Hz
Suggested load volume	4l / 41Hz (sealed) 6l / 39Hz (sealed)
Accessories	Optional grille



### 3" GRILLE

Optional 'M' profile aluminium ring



### 5" GRILLE

Optional 'M' profile aluminium ring



### 6.5" GRILLE

Optional 'M' profile aluminium ring



---

# 03.

## K2 POWER

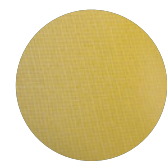
**More than just a product, a way of life**

Immerse yourself in the performance of the iconic yellow aramid fibre cone, an exclusive Focal icon of sportiness and power. Instantly recognisable, the K2 Power line delivers incredible harmonics and dynamics. Meanwhile, the subwoofers have been designed to function in very small spaces whilst providing high volume and impressive energy. Get ready to experience new emotions behind the wheel.

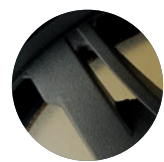
---







K2  
cone



Aluminium  
chassis



TMD®  
surround



Ventilated  
magnet



K2 tweeter with  
'M'-shaped dome



Audiophile  
crossover





**EC 165 K**



**ES 100 K**



**ES 130 K**

<b>Type</b>	2-way coaxial kit	2-way component kit	2-way component kit
<b>Diameter</b>	6½" (165mm)	4" (100mm)	5" (130mm)
<b>Cone</b>	K2 composite sandwich	K2 composite sandwich	K2 composite sandwich
<b>Surround technology</b>	Tuned Mass Damper (TMD®)	Tuned Mass Damper (TMD®)	Tuned Mass Damper (TMD®)
<b>Motor</b>	Ferrite	Neodymium	Ferrite
<b>Mounting depth</b>	2½½" (74mm)	1½½" (39mm)	2¾" (60.4mm)
<b>Voice coil diameter</b>	1" (25mm)	1¾" (20mm)	1" (25mm)
<b>Tweeter</b>	TKM ('M' profile aramid-fibre inverted dome)	TKM ('M' profile aramid-fibre inverted dome)	TKM ('M' profile aramid-fibre inverted dome)
<b>Crossover</b>	6dB	Separated: 12/12dB/oct	Separated: 6-12/12dB/oct
<b>Adjustable tweeter level</b>	-	+3; 0; -3dB/oct	+3; 0; -3dB/oct
<b>Impedance</b>	4Ω	4Ω	4Ω
<b>Max. power</b>	160W	120W	160W
<b>Nom. power</b>	80W RMS	60W RMS	80W RMS
<b>Sensitivity (2.83 V/1 m)</b>	93dB	90dB	90dB
<b>Frequency response</b>	60Hz - 22kHz	110Hz - 22kHz	65Hz - 22kHz
<b>Suggested load volume</b>	-	-	-
<b>Accessories</b>	Grilles included	Grilles included	Grilles included



**ES 165 K**



**ES 165 K2**

<b>Type</b>	2-way component kit	2-way component kit
<b>Diameter</b>	6½" (165mm)	6½" (165mm)
<b>Cone</b>	K2 composite sandwich	K2 composite sandwich
<b>Surround technology</b>	Tuned Mass Damper (TMD®)	Tuned Mass Damper (TMD®)
<b>Motor</b>	Ferrite	Ferrite
<b>Mounting depth</b>	2½½" (74mm)	2½½" (73.9mm)
<b>Voice coil diameter</b>	1¼" (32mm)	1¼" (32mm)
<b>Tweeter</b>	TKM ('M' profile aramid-fibre inverted dome)	TKM ('M' profile aramid-fibre inverted dome)
<b>Crossover</b>	Separated: 6-12/12dB/oct	Bi-amp separated: 6-12/12dB/oct
<b>Adjustable tweeter level</b>	+3; 0; -3dB/oct	+3; 0; -3dB/oct
<b>Impedance</b>	4Ω	2Ω
<b>Max. power</b>	200W	200W
<b>Nom. power</b>	100W RMS	100W RMS
<b>Sensitivity (2.83 V/1 m)</b>	90.8dB	92.8dB
<b>Frequency response</b>	60Hz - 22kHz	60Hz - 22kHz
<b>Suggested load volume</b>	-	-
<b>Accessories</b>	Grilles included	Grilles included



### ES 165 KX2

### ES 165 KX3

Type	2-way component kit	3-way component kit
Diameter	6½" (165mm)	Woofer: 6½" (165mm) Midrange: 80mm
Cone	K2 composite sandwich	K2 composite sandwich
Surround technology	Tuned Mass Damper (TMD®)	Tuned Mass Damper (TMD®)
Motor	Ferrite	Woofer: Ferrite Midrange: Neodymium
Mounting depth	3" (75.9mm)	Woofer: 3" (75.9mm) Midrange: 15/16" (33.5mm)
Voice coil diameter	1⅞" (40mm)	1⅞" (40mm)
Tweeter	TKMX ('M' profile aramid-fibre inverted dome)	TKMX ('M' profile aramid-fibre inverted dome)
Crossover	Bi-amp separated: 6-12/12-18dB/oct	Separated: 6-12/12/12dB/oct
Adjustable tweeter level	+3; 0; -3dB/oct	+3; 0; -3dB/oct
Impedance	2Ω	4Ω
Max. power	240W	240W
Nom. power	120W RMS	120W RMS
Sensitivity (2.83 V/1 m)	92,5dB	93dB
Frequency response	55Hz - 22kHz	45Hz - 22kHz
Suggested load volume	-	-
Accessories	Grilles included	Grilles included



### E25 KX



### E30 KX

Subwoofer	Subwoofer
10" (250mm)	12" (300mm)
K2 composite sandwich	K2 composite sandwich
-	-
Dual ferrite	Dual ferrite
6¾" (172mm)	6¾" (172mm)
2⅞" (65mm)	2⅞" (65mm)
-	-
-	-
-	-
2 x 4Ω	2 x 4Ω
1,200W	1,600W
600W RMS	800W RMS
84.5dB	86.5dB
25Hz - 500Hz	25Hz - 500Hz
Sealed enclosure: 0.6 to 0.77 cu ft Bass-reflex: 0.77 to 1.23 cu ft	Sealed enclosure: 0.99 to 1.23 cu ft Bass-reflex: 0.99 to 1.76 cu ft
-	-



---

# 04.

## FLAX EVO

The perfect balance

With its French flax cone - a patented Focal exclusive - Flax Evo embodies the search for acoustic quality combined with sleek aesthetics. Sound definition, a natural midrange and deep bass are what characterise this unique range. The speaker drivers can handle high-performance amplification and can be therefore combined with any product from the Focal electronics range to provide you with a pure listening experience whilst on the go.

---







Flax cone



Aluminium chassis



TMD® surround



Ferrite magnet



TAM® tweeter



Audiophile crossover





**PC 165 FE**



**PS 130 FE**



**PS 165 FE**

<b>Type</b>	2-way coaxial kit	2-way component kit	2-way component kit
<b>Diameter</b>	6½" (165mm)	5" (130mm)	6½" (165mm)
<b>Cone</b>	Flax sandwich	Flax sandwich	Flax sandwich
<b>Surround technology</b>	Tuned Mass Damper (TMD®)	Tuned Mass Damper (TMD®)	Tuned Mass Damper (TMD®)
<b>Motor</b>	Ferrite	Ferrite	Ferrite
<b>Mounting depth</b>	2⅞" (72.7mm)	2⅞" (59.7mm)	2⅞" (72.7mm)
<b>Voice coil diameter</b>	1" (25mm)	1" (25mm)	1" (25mm)
<b>Tweeter</b>	Coaxial 'M'-profile inverted dome	TAM ('M'-profile Al/Mg inverted dome)	TAM ('M'-profile Al/Mg inverted dome)
<b>Crossover</b>	Integrated: 6dB/oct	Separated: 12/12dB/oct	Separated: 12/12dB/oct
<b>Adjustable tweeter level</b>	0/-3dB	0/-3dB	0/-3dB
<b>Impedance</b>	4Ω	4Ω	4Ω
<b>Max. power</b>	140W	120W	140W
<b>Nom. power</b>	70W RMS	60W RMS	70W RMS
<b>Sensitivity (2.83 V/1 m)</b>	90dB	90.5dB	91.5dB
<b>Frequency response</b>	60Hz - 28kHz	75Hz - 28kHz	60Hz - 28kHz
<b>Accessories</b>	Mounting accessories, screws	Mounting accessories, screws	Mounting accessories, screws



**PS 165 FSE**



**PS 165 FXE**



**PS 165 F3E**

<b>Type</b>	2-way component kit	2-way component kit	3-way component kit
<b>Diameter</b>	6½" (165mm)	6½" (165mm)	Woofer: 6½" (165mm) Midrange: 3⅞" (80mm)
<b>Cone</b>	Flax sandwich	Flax sandwich	Flax sandwich
<b>Surround technology</b>	Tuned Mass Damper (TMD®)	Tuned Mass Damper (TMD®)	Tuned Mass Damper (TMD®)
<b>Motor</b>	Ferrite	Ferrite	Ferrite
<b>Mounting depth</b>	2⅞" (54.5mm)	3" (77mm)	Woofer: 2⅞" (72.7mm) Midrange: 1⅝" (33.5mm)
<b>Voice coil diameter</b>	1¼" (32mm)	1¼" (32mm)	Woofer: 1¼" (32mm) Midrange: 1" (25mm)
<b>Tweeter</b>	TAM ('M'-profile Al/Mg inverted dome)	TAM ('M'-profile Al/Mg inverted dome)	TAM ('M'-profile Al/Mg inverted dome)
<b>Crossover</b>	Separated: 12/12dB/oct	Bi-amp separated: 12-18dB/oct	Separated: 12/12-18dB/oct
<b>Adjustable tweeter level</b>	0/-3dB	0/-3dB	0/-3dB
<b>Impedance</b>	4Ω	4Ω	4Ω
<b>Max. power</b>	120W	160W	160W
<b>Nom. power</b>	60W RMS	80W RMS	80W RMS
<b>Sensitivity (2.83 V/1 m)</b>	91.5dB	90.5dB	90.5dB
<b>Frequency response</b>	70Hz - 28kHz	55Hz - 28kHz	60Hz - 28kHz
<b>Accessories</b>	Mounting accessories, screws	Mounting accessories, screws	Mounting accessories, screws



**P 20 FE**



**P 20 FSE**

<b>Type</b>	Sealed box and bass-reflex subwoofer	Sealed box subwoofer
<b>Diameter</b>	8" (200mm)	8" (200mm)
<b>Cone</b>	Flax sandwich	Flax sandwich
<b>Motor</b>	Dual ferrite	Dual ferrite
<b>Surround technology</b>	4 $\frac{5}{8}$ " (117mm)	3" (76mm)
<b>Voice coil diameter</b>	1 $\frac{1}{2}$ " (38mm)	1 $\frac{1}{2}$ " (38mm)
<b>Impedance</b>	4 $\Omega$	4 $\Omega$
<b>Max. power</b>	500W	400W
<b>Nom. power</b>	250W RMS	200W RMS
<b>Sensitivity (2.83 V/1 m)</b>	82.5dB	86dB
<b>Frequency response</b>	39Hz - 500Hz	41Hz - 400Hz
<b>Suggested load volume</b>	Sealed enclosure: 0.35 to 0.52 cu ft Bass-reflex: 0.35 to 0.71 cu ft	Sealed enclosure: 0.21 to 0.32 cu ft



**P 25 FE**



**P 25 FSE**

<b>Type</b>	Sealed box and bass-reflex subwoofer	Sealed box subwoofer
<b>Diameter</b>	10" (250mm)	10" (250mm)
<b>Cone</b>	Flax sandwich	Flax sandwich
<b>Motor</b>	Dual ferrite	Dual ferrite
<b>Surround technology</b>	5 $\frac{9}{16}$ " (140.6mm)	3" (76mm)
<b>Voice coil diameter</b>	2" (50mm)	1 $\frac{1}{2}$ " (38mm)
<b>Impedance</b>	4 $\Omega$	4 $\Omega$
<b>Max. power</b>	600W	560W
<b>Nom. power</b>	300W RMS	280W RMS
<b>Sensitivity (2.83 V/1 m)</b>	85dB	86dB
<b>Frequency response</b>	33Hz - 500Hz	41Hz - 400Hz
<b>Suggested load volume</b>	Sealed enclosure: 0.35 to 0.88 cu ft Bass-reflex: 0.88 to 1.23 cu ft	Sealed enclosure: 0.42 to 0.64 cu ft (12 to 18 l)



---

# 05.

## SLATEFIBER

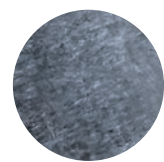
**Performance personified**

Versatile, accessible and high-performance, the Slatefiber line turns heads for its uncompromising efficiency. The two products are high sensitivity, so can be connected to the vehicle's original system or to an amplifier. What's more, you get meticulous French manufacturing, an exclusive Slatefiber cone, sleek design, flexible installation options and standard kit sizes to fit a wide range of vehicles.

---







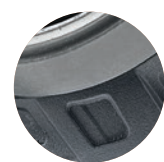
Slatefiber  
cone



Rotor effect  
basket



French  
manufacturing



Ferrite  
magnet



Aluminium  
tweeter



Separable  
crossovers







### PC 165 SF

Type	2-way coaxial kit	PS 165 SF	2-way component kit
Diameter	6½" (165mm)	PS 165 SF	6½" (165mm)
Cone	Slatefiber	PS 165 SF	Slatefiber
Surround technology	Butyl	PS 165 SF	Butyl
Motor	Ferrite	PS 165 SF	Ferrite
Mounting depth	2¾" (70mm)	PS 165 SF	2¾" (70mm)
Voice coil diameter	1" (25mm)	PS 165 SF	1" (25mm)
Tweeter	Aluminium/Magnesium inverted dome	PS 165 SF	Aluminium/Magnesium inverted dome
Crossover	Integrated	PS 165 SF	Separable crossover: 12dB/oct
Adjustable tweeter level	-	PS 165 SF	+3/0/-3dB
Impedance	4Ω	PS 165 SF	4Ω
Max. power	160W	PS 165 SF	160W
Nom. power	80W RMS	PS 165 SF	80W RMS
Sensitivity (2.83V/1m)	91dB	PS 165 SF	91dB
Frequency response	60Hz - 21kHz	PS 165 SF	60Hz - 21kHz
Accessories	Mounting accessories, screws	PS 165 SF	Mounting accessories, screws



### PS 165 SF



---

# 06.

## POLYGLASS

### A winning combination

Forget your current system and treat yourself to a rejuvenated sound experience with our Polyglass and Polyglass Last Edition kits that combine power, durability and compactness. This line has never stopped improving across the board, from concept to design. The subwoofers, which can be used in a sealed or bass-reflex box, make a real difference with their impactful bass. All components of the line are meticulously put together to surround passengers with warm sound.

---



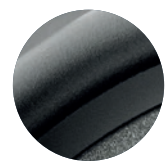




Polyglass cone



Aluminium chassis



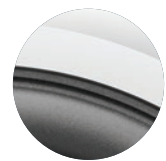
Butyl surround



Separable crossovers



Aluminium tweeter



Diamond cutting





### PC 100

### PC 130

### PC 165

### PS 165 V1

Type	2-way coaxial kit	2-way coaxial kit	2-way coaxial kit
Diameter	4" (100mm)	5" (130mm)	6½" (165mm)
Cone	Polyglass	Polyglass	Polyglass
Motor	Ferrite	Ferrite	Ferrite
Mounting depth	2" (51.5mm)	2¼" (56.5mm)	2⅝" (65.5mm)
Voice coil diameter	1" (25mm)	1" (25mm)	1" (25mm)
Tweeter	Rotating Aluminium inverted dome	Rotating Aluminium inverted dome	Rotating Aluminium inverted dome
Crossover	Integrated: 6dB/oct	Integrated: 6dB/oct	Integrated: 6dB/oct
Adjustable tweeter level	-	-	-
Impedance	4Ω	4Ω	4Ω
Max. power	100W	120W	160W
Nom. power	50W RMS	60W RMS	80W RMS
Sensitivity (2.83 V/1 m)	90.9dB	91.6dB	93.6dB
Frequency response	100Hz - 20kHz	80Hz - 20kHz	60Hz - 20kHz
Suggested load volume	-	-	-
Accessories	Grilles included	Grilles included	Grilles included

Type	2-way component kit
Diameter	6½" (165mm)
Cone	Polyglass
Motor	Ferrite
Mounting depth	2⅝" (65.5mm)
Voice coil diameter	1" (25mm)
Tweeter	Aluminium inverted dome
Crossover	Separated: 6/12dB/oct
Adjustable tweeter level	+3/0/-3dB
Impedance	4Ω
Max. power	160W
Nom. power	80W RMS
Sensitivity (2.83 V/1 m)	92,5dB
Frequency response	60Hz - 20kHz
Suggested load volume	-
Accessories	Grilles included



---

# 07. ACCESS

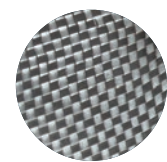
## Accessible Focal technology

Access invites all drivers to experience Focal innovation and quality. With its assured style and technical prowess, this line is dedicated to performance. Power handling, plunging depth of bass and razor sharp acoustics are the common denominators of the Access philosophy: we guarantee you the full Focal technology experience inside your car and a rejuvenated listening adventure.

---







DFS®  
cone



Reinforced ABS  
bowl



Curved  
grilles



Adjustable  
tweeter level



Aluminium dome  
tweeter



Butyl  
surround





### 100 AC

### 130 AC

### 165 AC

Type	2-way coaxial kit	2-way coaxial kit	2-way coaxial kit
Diameter	4" (100mm)	5" (130mm)	6½" (165mm)
Cone	DFS® (Dual Fiberglass Structure)	DFS® (Dual Fiberglass Structure)	DFS® (Dual Fiberglass Structure)
Motor	Ferrite	Ferrite	Ferrite
Mounting depth	2¼" (52.2mm)	2½" (54.7mm)	2½" (62.9mm)
Voice coil diameter	1" (25mm)	1" (25mm)	1" (25mm)
Tweeter	Rotating Aluminium inverted dome	Rotating Aluminium inverted dome	Rotating Aluminium inverted dome
Crossover	Integrated: 6dB/oct	Integrated: 6dB/oct	Integrated: 6dB/oct
Impedance	4Ω	4Ω	4Ω
Max. power	80W	100W	120W
Nom. power	40W RMS	50W RMS	60W RMS
Sensitivity (2.83 V/1 m)	87.2dB	89.3dB	91dB
Frequency response	70Hz - 20kHz	70Hz - 20kHz	60Hz - 20kHz
Accessories	Grilles included	Grilles included	Grilles included



### 570 AC

### 690 AC

Type	2-way coaxial kit	2-way coaxial kit
Diameter	5 x 7" (130 x 180 mm)	6 x 9" (164 x 235mm)
Cone	DFS® (Dual Fiberglass Structure)	DFS® (Dual Fiberglass Structure)
Motor	Ferrite	Ferrite
Mounting depth	2½" (59.5mm)	1¾" (30mm)
Voice coil diameter	1" (25mm)	1¾" (30mm)
Tweeter	Rotating Aluminium inverted dome	Rotating Aluminium inverted dome
Crossover	Integrated: 6dB/oct	Integrated: 6dB/oct
Impedance	4Ω	4Ω
Max. power	120W	150W
Nom. power	60W RMS	75W RMS
Sensitivity (2.83 V/1 m)	92.8dB	91.3dB
Frequency response	65Hz - 20kHz	50Hz - 20kHz
Accessories	Without grille	Grilles included





	<b>130 AS</b>	<b>165 AS</b>	<b>165 AS3</b>
<b>Type</b>	2-way component kit	2-way component kit	3-way component kit
<b>Diameter</b>	5" (130mm)	6½" (165mm)	Woofer : 6½" (165mm) Midrange : 3⅞" (80mm)
<b>Cone</b>	DFS® (Dual Fiberglass Structure)	DFS® (Dual Fiberglass Structure)	DFS® (Dual Fiberglass Structure)
<b>Motor</b>	Ferrite	Ferrite	Ferrite
<b>Mounting depth</b>	2⅞" (54.7mm)	2½" (62.9mm)	Woofer : 2½" (62.9mm) Midrange : 1⅞" (42.5mm)
<b>Voice coil diameter</b>	1" (25mm)	1" (25mm)	1" (25mm)
<b>Tweeter</b>	Aluminium inverted dome	Aluminium inverted dome	Aluminium inverted dome
<b>Crossover</b>	Separated: 12/12dB/oct (5kHz)	Separated: 12/12dB/oct (5kHz)	Separated: 6/12dB/oct (5kHz)
<b>Adjustable tweeter level</b>	+3; 0; -3dB/oct	+3; 0; -3dB/oct	+3; 0; -3dB/oct
<b>Impedance</b>	4Ω	4Ω	4Ω
<b>Max. power</b>	100W	120W	160W
<b>Nom. power</b>	50W RMS	60W RMS	80W RMS
<b>Sensitivity (2.83 V/1 m)</b>	90dB	91.3dB	90dB
<b>Frequency response</b>	65Hz - 20kHz	60Hz - 20kHz	55Hz - 20kHz
<b>Suggested load volume</b>	-	-	-
<b>Accessories</b>	Grilles included	Grilles included	Grilles included

	<b>25 A4</b>	<b>30 A4</b>
<b>Type</b>	Subwoofer	Subwoofer
<b>Diameter</b>	10" (250mm)	12" (300mm)
<b>Cone</b>	DFS® (Dual Fiberglass Structure)	DFS® (Dual Fiberglass Structure)
<b>Motor</b>	4¾" (120mm)	4¾" (120mm)
<b>Mounting depth</b>	5" (126.6mm)	5¾" (146.5mm)
<b>Voice coil diameter</b>	Simple voice coil: 2" (50mm)	Simple voice coil: 2" (50mm)
<b>Tweeter</b>	-	-
<b>Crossover</b>	-	-
<b>Adjustable tweeter level</b>	-	-
<b>Impedance</b>	4Ω	4Ω
<b>Max. power</b>	400W	500W
<b>Nom. power</b>	200W RMS	250W RMS
<b>Sensitivity (2.83 V/1 m)</b>	85dB	87dB
<b>Frequency response</b>	36Hz - 500Hz	32Hz - 500Hz
<b>Suggested load volume</b>	Sealed enclosure: 0.52 to 0.88 cu ft Bass-reflex: 0.71 to 1.23 cu ft	Sealed enclosure: 0.71 to 1.06 cu ft Bass-reflex: 0.88 to 1.23 cu ft
<b>Accessories</b>	-	-

---

# 08.

## UNIVERSAL

### Optimal compatibility

Enjoy the Universal line's rich sound without altering the aesthetics of your car. Special attention was paid to design and dimensions during the development stages of these products, to ensure optimal compatibility with as many different vehicles as possible. Their compactness, shallow depth and divisible fastenings make them quick and easy to fit.

---







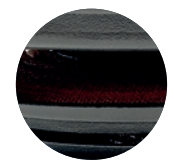
Adjustable  
tweeter level



Polyglass cone



Butyl  
surround



Integrated  
crossover



Al/Mg  
tweeter



Compact  
size





### ICU 100

### ICU 130

### ICU 165

Type	2-way coaxial kit	2-way coaxial kit	2-way coaxial kit
Diameter	4" (100mm)	5" (130mm)	6½" (165mm)
Cone	Polyglass	Polyglass	Polyglass
Motor	Ferrite	Ferrite	Ferrite
Mounting depth	1⅞" (49mm)	1⅞" (48.9mm)	1⅞" (48.4mm)
Voice coil diameter	1" (25mm)	1" (25mm)	1" (25mm)
Tweeter	Al/Mg inverted dome	Al/Mg inverted dome	Al/Mg inverted dome
Crossover	Integrated: 6dB/oct	Integrated: 6dB/oct	Integrated: 6dB/oct
Adjustable tweeter level	Flat / High	Flat / High	Flat / High
Impedance	4Ω	4Ω	4Ω
Max. power	80W	120W	140W
Nom. power	40W RMS	60W RMS	70W RMS
Sensitivity (2.83 V/1 m)	90.3dB	91.8dB	93dB
Frequency response	90Hz - 21kHz	90Hz - 21kHz	60Hz - 21kHz
Accessories	Without grille	Without grille	Without grille

### ICU 570

### ICU 690

Type	2-way coaxial kit	2-way coaxial kit
Diameter	5 x 7" (130 x 180mm)	6 x 9" (164 x 235mm)
Cone	Polyglass	Polyglass
Motor	Ferrite	Ferrite
Mounting depth	2⅝" (59.3mm)	3⅝" (83.5mm)
Voice coil diameter	1" (25mm)	1" (25mm)
Tweeter	Al/Mg inverted dome	Al/Mg inverted dome
Crossover	Integrated: 6dB/oct	Integrated: 6dB/oct
Adjustable tweeter level	Flat / High	Flat / High
Impedance	4Ω	4Ω
Max. power	140W	160W
Nom. power	70W RMS	80W RMS
Sensitivity (2.83 V/1 m)	94dB	93.6dB
Frequency response	60Hz - 21kHz	55Hz - 21kHz
Accessories	Without grille	Without grille





### ISU 130

### ISU 165

### ISU 200

### ISU 690

### TWU 1.5

<b>Type</b>	2-way component kit	2-way component kit	2-way component kit
<b>Diameter</b>	5" (130mm)	6½" (165mm)	8" (230mm)
<b>Cone</b>	Polyglass	Polyglass	Polyglass
<b>Motor</b>	Ferrite	Ferrite	Ferrite
<b>Mounting depth</b>	1⅞" (48.9mm)	1⅞" (48.4mm)	2½" (63.5mm)
<b>Voice coil diameter</b>	1" (25mm)	1" (25mm)	1" (25mm)
<b>Tweeter</b>	Al/Mg inverted dome	Al/Mg inverted dome	Al/Mg inverted dome
<b>Crossover</b>	Integrated (connectors): 6dB/oct	Integrated (connectors): 6dB/oct	Integrated (connectors): 6dB/oct
<b>Impedance</b>	4Ω	4Ω	4Ω
<b>Max. power</b>	120W	140W	160W
<b>Nom. power</b>	60W RMS	70W RMS	80W RMS
<b>Sensitivity (2.83 V/1 m)</b>	91.8dB	93dB	93dB
<b>Frequency response</b>	90Hz - 21kHz	60Hz - 21kHz	40Hz - 21kHz
<b>Accessories</b>	Tweeter support Crossovers in line on connectors Supplied without grille	Tweeter support Crossovers in line on connectors Supplied without grille	Tweeter support Crossovers in line on connectors Supplied without grille

<b>Type</b>	2-way component kit	Tweeter
<b>Diameter</b>	6 x 9" (164 x 235mm)	1⅞" (49.4mm)
<b>Cone</b>	Polyglass	Al/Mg inverted dome
<b>Motor</b>	Ferrite	Neodymium
<b>Mounting depth</b>	3⅞" (83.5mm)	1⅞" (16.8mm)
<b>Voice coil diameter</b>	1" (25mm)	1⅜" (20mm)
<b>Tweeter</b>	Al/Mg inverted dome	-
<b>Crossover</b>	Integrated (connectors): 6dB/oct	Integrated: 6dB/oct
<b>Impedance</b>	4Ω	4Ω
<b>Max. power</b>	160W	100W
<b>Nom. power</b>	80W RMS	15W RMS
<b>Sensitivity (2.83 V/1 m)</b>	93,6dB	94dB
<b>Frequency response</b>	55Hz - 21kHz	4kHz - 21kHz
<b>Accessories</b>	Tweeter support Crossovers in line on connectors Supplied without grille	4 possibilities: "Flush", surface, tilted mounting, in factory location

---

# 09. AUDITOR

## Your Focal installation debut

With Auditor, treat yourself to a high-quality Focal audio system at a very competitive price. This range of nine versatile kits provides a system with guaranteed efficiency, performance and power. Combined with dedicated electronics or connected to the vehicle's original amplifier, these component, coaxial and elliptical coaxial kits significantly improve the on-board audio. These products benefit from all of Focal's expertise to help you rediscover the pleasure of driving to music!

---



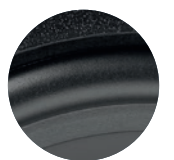




Polypropylene cone



Mylar Inverted dome tweeter



'U'-shaped surround



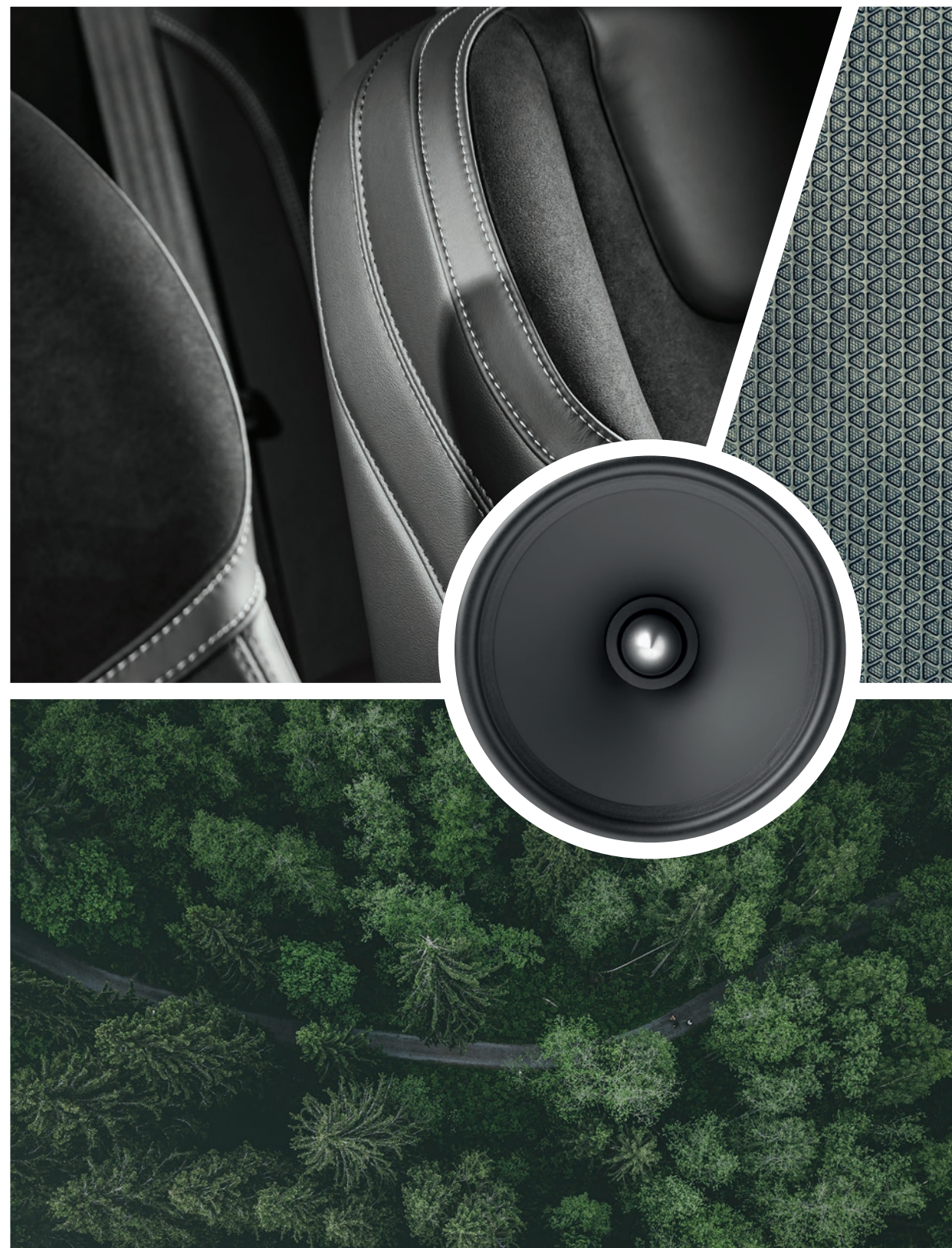
Steel bowl



Black lacquered tweeter finish



ABS & Mesh grille





**ACX 100**

**ACX 130**

**ACX 165**

<b>Type</b>	2-way coaxial kit	2-way coaxial kit	2-way coaxial kit
<b>Diameter</b>	4" (100mm)	5" (130mm)	6½" (165mm)
<b>Cone</b>	Polypropylene	Polypropylene	Polypropylene
<b>Motor</b>	Ferrite	Ferrite	Ferrite
<b>Mounting depth</b>	1⅞" (48.2mm)	2⅞" (55mm)	2⅞" (62.5mm)
<b>Voice coil diameter</b>	1" (25mm)	1" (25mm)	1" (25mm)
<b>Tweeter</b>	Inverted dome	Inverted dome	Inverted dome
<b>Crossover</b>	6dB/oct	6dB/oct	6dB/oct
<b>Impedance</b>	4Ω	4Ω	4Ω
<b>Max. power</b>	60W	100W	120W
<b>Nom. power</b>	30W RMS	50W RMS	60W RMS
<b>Sensitivity (2.83 V/1 m)</b>	88dB	90dB	91.5dB
<b>Frequency response</b>	80Hz - 21kHz	65Hz - 21kHz	60Hz - 21kHz
<b>Accessories</b>	Supplied with grilles, fastening and screws	Supplied with grilles, fastening and screws	Supplied with grilles, fastening and screws



**ACX 165 S**

**ACX 570**

**ACX 690**

<b>Type</b>	2-way shallow coaxial kit	2-way coaxial elliptic kit	3-way coaxial elliptic kit
<b>Diameter</b>	6½" (165mm)	5 x 7" (130 x 180mm)	6 x 9" (164 x 235mm)
<b>Cone</b>	Polypropylene	Polypropylene	Polypropylene
<b>Motor</b>	Ferrite	Ferrite	Ferrite
<b>Mounting depth</b>	1⅞" (48.5mm)	2⅞" (59.5mm)	3⅞" (78mm)
<b>Voice coil diameter</b>	1" (25mm)	1" (25mm)	1⅜" (35mm)
<b>Tweeter</b>	Inverted dome	Inverted dome	Inverted dome tweeter/midrange
<b>Crossover</b>	6dB/oct	6dB/oct	6dB/oct
<b>Impedance</b>	4Ω	4Ω	4Ω
<b>Max. power</b>	110W	120W	160W
<b>Nom. power</b>	55W RMS	60W RMS	80W RMS
<b>Sensitivity (2.83 V/1 m)</b>	91dB	91.6dB	92dB
<b>Frequency response</b>	60Hz - 21kHz	60Hz - 21kHz	50Hz - 20kHz
<b>Accessories</b>	Supplied with grilles, fastening and screws	Supplied with grilles, fastening and screws	Supplied with grilles, fastening and screws





### ASE 130

<b>Type</b>	2-way component kit
<b>Diameter</b>	5" (130mm)
<b>Cone</b>	Polypropylene
<b>Motor</b>	Ferrite
<b>Mounting depth</b>	2½" (55.5mm)
<b>Voice coil diameter</b>	1" (25mm)
<b>Tweeter</b>	Inverted dome
<b>Crossover</b>	Separated pre-wired: 12dB/oct
<b>Impedance</b>	4Ω
<b>Max. power</b>	100W
<b>Nom. power</b>	50W RMS
<b>Sensitivity (2.83 V/1 m)</b>	90dB
<b>Frequency response</b>	65Hz - 21kHz
<b>Accessories</b>	Supplied with grilles, fastening and screws



### ASE 165

<b>Type</b>	2-way component kit
<b>Diameter</b>	6½" (165mm)
<b>Cone</b>	Polypropylene
<b>Motor</b>	Ferrite
<b>Mounting depth</b>	2¾" (62.5mm)
<b>Voice coil diameter</b>	1" (25mm)
<b>Tweeter</b>	Inverted dome
<b>Crossover</b>	Separated pre-wired: 12dB/oct
<b>Impedance</b>	4Ω
<b>Max. power</b>	120W
<b>Nom. power</b>	60W RMS
<b>Sensitivity (2.83 V/1 m)</b>	91.5dB
<b>Frequency response</b>	60Hz - 21kHz
<b>Accessories</b>	Supplied with grilles, blinding and screws



### ASE 165 S

<b>Type</b>	2-way shallow component kit
<b>Diameter</b>	6½" (165mm)
<b>Cone</b>	Polypropylene
<b>Motor</b>	Ferrite
<b>Mounting depth</b>	1⅞" (48.5mm)
<b>Voice coil diameter</b>	1" (25mm)
<b>Tweeter</b>	Inverted dome
<b>Crossover</b>	Separated pre-wired: 12dB/oct
<b>Impedance</b>	4Ω
<b>Max. power</b>	110W
<b>Nom. power</b>	55W RMS
<b>Sensitivity (2.83 V/1 m)</b>	91dB
<b>Frequency response</b>	60Hz - 21kHz
<b>Accessories</b>	Supplied with grilles, blinding and screws



### AP 4340

<b>Type</b>	Class AB Amplifier 4/3/2 channels RCA inputs
<b>CEA Power (4Ω)</b>	4 x 70W RMS
<b>Max. power (2Ω)</b>	4 x 95W RMS
<b>Max. power (bridged 4Ω)</b>	2 x 190W RMS
<b>Crossovers</b>	High-Pass (channel 1-2): 60Hz - 1.2kHz High-Pass (channel 3-4): 100Hz-2.2kHz Low-Pass : 50 - 250Hz
<b>Functions</b>	Full Range
<b>Dimensions (DxWxH)</b>	13¾ x 2 x 9¼" (340 x 50 x 235mm)

---

# 10.

## SUBWOOFERS

For powerful, boosted bass, choose Focal's range of subwoofers (passive, active, bass-reflex, slim...). They meet all installation requirements thanks to their performance, the range of different sizes available and how compact they are. Compatible with all of our Car Audio products, these subwoofers enjoys all the knowledge and savoir-faire that Focal provides to bring you ultimate listening pleasure in the car.

---







**SUB 10**



**SUB 10 DUAL**



**SUB 10 SLIM**

<b>Type</b>	Bass-reflex subwoofer	Bass-reflex subwoofer	Subwoofer
<b>Diameter</b>	10" (25cm)	10" (25cm)	10" (25cm)
<b>Cone</b>	Polypropylene	Polypropylene	Polypropylene
<b>Motor</b>	Ferrite	Ferrite	Ferrite
<b>Surround technology</b>	Butyl	Butyl	Butyl
<b>Voice coil diameter</b>	2" (50mm)	2" (50mm)	1" (20mm)
<b>Impedance</b>	4Ω	4Ω + 4Ω	4Ω
<b>Max. power</b>	500W	500W	460W
<b>Nom. power</b>	250W RMS	250W RMS	230W RMS
<b>Sensitivity (2.83 V/1 m)</b>	85dB	85dB	85dB
<b>Frequency response</b>	35Hz - 500kHz	32Hz - 500kHz	39Hz - 500kHz
<b>Suggested load volume</b>	Sealed enclosure : 0.35 to 0.88 cu ft Bass-reflex : 0.88 to 1.23 cu ft	Sealed enclosure : 0.35 to 0.88 cu ft Bass-reflex : 0.88 to 1.41 cu ft	Sealed enclosure : 0.35 to 0.88 cu ft



**SUB 12**



**SUB 12 DUAL**



**SUB 12 SLIM**

<b>Type</b>	Bass-reflex subwoofer	Bass-reflex subwoofer	Subwoofer
<b>Diameter</b>	12" (30cm)	12" (30cm)	12" (30cm)
<b>Cone</b>	Polypropylene	Polypropylene	Polypropylene
<b>Motor</b>	Ferrite	Ferrite	Ferrite
<b>Surround technology</b>	Butyl	Butyl	Butyl
<b>Voice coil diameter</b>	2" (50mm)	2" (50mm)	1" (20mm)
<b>Impedance</b>	4Ω	4Ω + 4Ω	4Ω
<b>Max. power</b>	600W	600W	560W
<b>Nom. power</b>	300W RMS	300W RMS	280W RMS
<b>Sensitivity (2.83 V/1 m)</b>	88dB	88dB	87dB
<b>Frequency response</b>	30Hz - 500kHz	29Hz - 50kHz	35Hz - 500kHz
<b>Suggested load volume</b>	Sealed enclosure : 0.53 to 1.06 Bass-reflex : 1.06 to 1.23 cu ft	Sealed enclosure : 0.53 to 1.06 cu ft Bass-reflex : 1.06 to 1.23 cu ft	Sealed enclosure : 0.53 to 1.06 cu ft



**BOMBA BP 20**



**IBUS 2.0**



**IBUS 2.1**

<b>Type</b>	Compact active subwoofer enclosure Class D amplifier High and low level audio input (OEM and aftermarket head units compatibility)	Active enclosure with subwoofer	Active enclosure with subwoofer True 2.1 system 1 amplifier for the subwoofer 1 amplifier for the front channel very high power
<b>Woofers diameter</b>	8" (200mm)	8" (200mm)	8" (200mm)
<b>Impedance</b>	-	-	-
<b>Sub max. power</b>	300W	150W	150W
<b>Sub nom. power</b>	150W RMS	75W RMS	75W RMS
<b>Sensitivity (2.83V/1m)</b>	-	-	-
<b>Frequency response</b>	20Hz - 125Hz	45Hz - 150Hz	45Hz - 150Hz
<b>Speaker max. power</b>	-	-	2 x 110W RMS
<b>Speaker nom. power</b>	-	-	2 x 55W RMS
<b>Function</b>	Bandpass technology Phase selector : 0 - 180° Adjustable frequency cut off : 45Hz - 120Hz	High-level inputs Autopower ON	High-level inputs Autopower ON Amplification 2 front channels
<b>Accessories</b>	-	Remote & <i>Plug &amp; Play</i> wiring	Remote & <i>Plug &amp; Play</i> wiring
<b>Weight</b>	24.4lbs (11kg)	11.1lbs (5kg)	11.3lbs (5.1kg)
<b>Dimensions (HxLxP)</b>	17 <sup>3</sup> / <sub>16</sub> x 9 <sup>13</sup> / <sub>16</sub> x 12 <sup>11</sup> / <sub>16</sub> " (249 x 439 x 323mm)	21 <sup>3</sup> / <sub>16</sub> x 13 <sup>3</sup> / <sub>16</sub> x 9 <sup>13</sup> / <sub>16</sub> " (71.5 x 344 x 250mm)	21 <sup>3</sup> / <sub>16</sub> x 13 <sup>3</sup> / <sub>16</sub> x 9 <sup>13</sup> / <sub>16</sub> " (71.5 x 344 x 250mm)



**PSB 200**



**ISUB TWIN**

<b>Type</b>	Compact passive subwoofer enclosure	Underseat passive subwoofers
<b>Woofers diameter</b>	8" (200mm)	-
<b>Impedance</b>	4Ω	2Ω
<b>Sub max. power</b>	250W	2 x 200W
<b>Sub nom. power</b>	150W RMS	2 x 100W RMS
<b>Sensitivity (2.83V/1m)</b>	83dB	83dB
<b>Frequency response</b>	45Hz - 150Hz	50 - 150Hz
<b>Speaker max. power</b>	-	-
<b>Speaker nom. power</b>	-	-
<b>Function</b>	-	-
<b>Accessories</b>	Screws, fixation system	Fixation system
<b>Weight</b>	15.7lbs (7kg)	2 x 6lbs (2 x 2.7kg)
<b>Dimensions (HxLxP)</b>	19 <sup>1</sup> / <sub>4</sub> x 4 <sup>5</sup> / <sub>16</sub> x 12" (109 x 489 x 304mm)	10 <sup>1</sup> / <sub>4</sub> x 9 <sup>1</sup> / <sub>2</sub> x 3 <sup>1</sup> / <sub>8</sub> " (260 x 240 x 80mm)

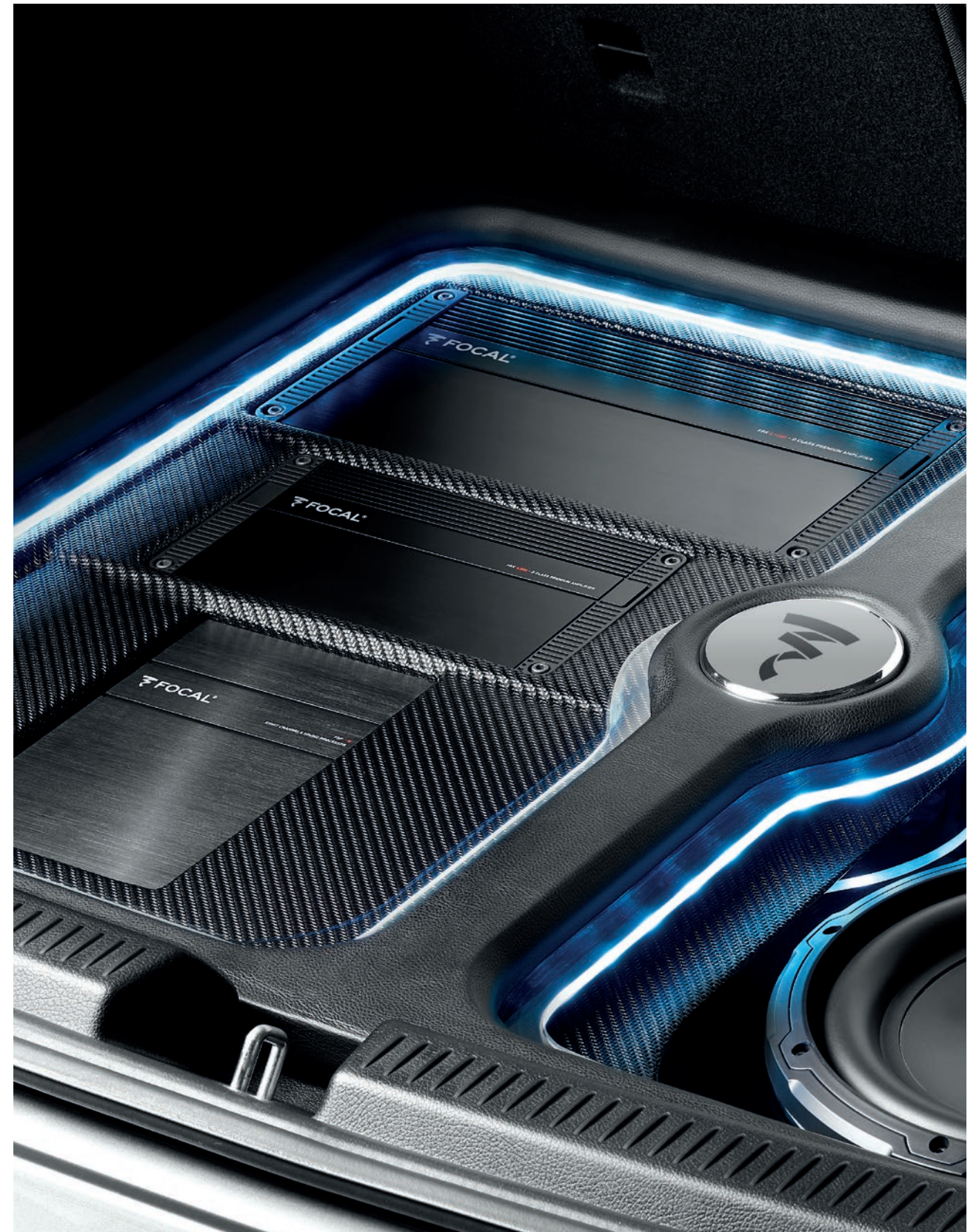


---

# 11. AMPLIFIERS & ACCESSORIES

In combination with and as a complement to our installations, we offer a range of amplifiers and cables so you can enjoy an all-round solution. Focal electronics To experience the sensations of a precise, controlled and stable sound, have it all. Last but not least, our cables play a vital role in the audio architecture, answering all your amplification questions and optimising the connections between components.

---





### FPX 5.1200

### FPX 4.400 SQ

### FPX 4.800

<b>Type</b>	Premium Class D Amplifier 5 channels	Premium Class AB Amplifier 4/3/2 channels Sound Quality	Premium Class D Amplifier 4/3/2 channels
<b>CEA Power (4Ω)</b>	4 x 75W RMS + 1 x 420W RMS	4 x 70W RMS	4 x 120W RMS
<b>Max. power (2Ω)</b>	4 x 120W RMS + 1 x 720W RMS	4 x 100W RMS	4 x 185W RMS
<b>Max. power (1Ω)</b>	-	-	-
<b>Max. power (bridged 4Ω)</b>	2 x 240W RMS + 720W RMS	2 x 200W RMS	2 x 370W RMS
<b>Crossovers</b>	Configurable High-Pass / Low-Pass: 50Hz - 500Hz	Configurable High-Pass / Low-Pass: 50Hz - 5 000Hz	Configurable High-Pass / Low-Pass: 50Hz - 500Hz
<b>Copy mode</b>	6CH/4CH/2CH	4CH/2CH	4CH/2CH
<b>Functions</b>	Full range Mode Bass Boost Subsonic filter	Full Range	Full Range
<b>Phase adjustment</b>	Yes	-	-
<b>Protections</b>	Short circuit / Over-current / Reverse polarity / DC / Voltage drop / Heat protection	Short circuit / Over-current / Reverse polarity / DC / Voltage drop / Heat protection	Short circuit / Over-current / Reverse polarity / DC / Voltage drop / Heat protection
<b>Accessories</b>	Remote control, screws, fuses	Screws, fuses, terminal board tools	Screws, fuses, terminal board tools
<b>Weight</b>	9lbs (4.1kg)	8.2lbs (3.7kg)	4.4lbs (2kg)
<b>Dimensions (DxWxH)</b>	11 <sup>3</sup> / <sub>16</sub> x 6 <sup>7</sup> / <sub>8</sub> x 2 <sup>1</sup> / <sub>4</sub> " (300 x 175 x 57mm)	12 <sup>3</sup> / <sub>8</sub> x 6 <sup>7</sup> / <sub>8</sub> x 2 <sup>1</sup> / <sub>4</sub> " (314 x 175 x 57mm)	9 <sup>5</sup> / <sub>16</sub> x 5 <sup>3</sup> / <sub>16</sub> x 2 <sup>1</sup> / <sub>16</sub> " (237 x 132 x 53mm)

### FPX 1.1000

<b>Type</b>	Premium Class D Amplifier Mono
<b>CEA Power (4Ω)</b>	1 x 420W RMS
<b>Max. power (2Ω)</b>	1 x 700W RMS
<b>Max. power (1Ω)</b>	1 x 1000W RMS
<b>Max. power (bridged 4Ω)</b>	-
<b>Crossovers</b>	Configurable Low-Pass: 50Hz - 250Hz
<b>Copy mode</b>	-
<b>Functions</b>	Bass Boost (6/12dB) Crossover subsonic (10Hz - 50Hz)
<b>Phase adjustment</b>	Progressive
<b>Protections</b>	Short circuit / Over-current / Reverse polarity / DC / Voltage drop / Heat protection
<b>Accessories</b>	Remote control, screws, fuses, terminal board tools
<b>Weight</b>	5.6lbs (2.55kg)
<b>Dimensions (DxWxH)</b>	11 <sup>1</sup> / <sub>16</sub> x 5 <sup>3</sup> / <sub>16</sub> x 2 <sup>1</sup> / <sub>16</sub> " (297 x 132 x 53mm)

### FDS 4.350

<b>Type</b>	Class D Amplifier 4/3/2 channels	Class D Amplifier Mono - RCA low-level inputs
<b>CEA Power (4Ω)</b>	4 x 58W RMS	1 x 210W RMS
<b>Max. power (2Ω)</b>	4 x 100W RMS	1 x 350W RMS
<b>Max. power (1Ω)</b>	-	-
<b>Max. power (bridged 4Ω)</b>	2 x 200W RMS	-
<b>Crossovers</b>	Configurable High-Pass / Low-Pass: 40Hz - 400Hz	Low-Pass: 40Hz - 400Hz
<b>Copy mode</b>	-	-
<b>Functions</b>	Full Range	Bass Boost (0/6dB / 12dB)
<b>Phase adjustment</b>	-	Progressive (0 - 180°)
<b>Protections</b>	Short circuit / Over-current / Reverse polarity / DC / Voltage drop / Heat protection	Short circuit / Over-current / Reverse polarity / DC / Voltage drop / Heat protection
<b>Accessories</b>	Screws, fuses	Screws, fuses
<b>Weight</b>	1.9lbs (850g)	1.9lbs (850g)
<b>Dimensions (DxWxH)</b>	7 <sup>3</sup> / <sub>16</sub> x 4 <sup>1</sup> / <sub>4</sub> x 1 <sup>1</sup> / <sub>16</sub> " (199 x 108 x 43mm)	7 <sup>3</sup> / <sub>16</sub> x 4 <sup>1</sup> / <sub>4</sub> x 1 <sup>1</sup> / <sub>16</sub> " (199 x 108 x 43mm)

### FDS 1.350





**FDP 1.900 V2**

**FDP 4.600 V2**

**FDP 6.900 V2**

<b>Type</b>	Premium Mono Class D Amplifier	Premium 4-Channel Class D Amplifier	Premium 6-Channel Class D Amplifier
<b>Power (4Ω)</b>	1 x 500W RMS	4 x 150W RMS	6 x 150W RMS
<b>Power (2Ω)</b>	1 x 850W RMS	4 x 200W RMS	6 x 200W RMS
<b>Power (bridged 4Ω)</b>	1 x 500W RMS into 1ohm	2 x 400W RMS	2 x 400W RMS + 1 x 500W RMS
<b>Crossovers</b>	High Pass 10-48Hz Low Pass 40-350Hz	High Pass/Low Pass/Band Pass 50Hz - 4000Hz	High Pass/Low Pass/Band Pass 50Hz - 4000Hz
<b>Copy mode</b>	-	4CH / 2CH	6CH / 4CH / 2CH
<b>Functions</b>	Bass Boost 40Hz 0 to +6dB	Full Range HP / LP / BP	Full Range HP / LP / BP
<b>Phase adjustment</b>	Yes	-	-
<b>Protections</b>	Short circuit / Over-current / Reverse polarity / DC / Voltage drop / Heat protection	Short circuit / Over-current / Reverse polarity / DC / Voltage drop / Heat protection	Short circuit / Over-current / Reverse polarity / DC / Voltage drop / Heat protection
<b>Accessories</b>	Sub Level Remote, Mount Screws, Mount Brackets	Sub Level Remote, Mount Screws, Mount Brackets	Sub Level Remote, Mount Screws, Mount Brackets
<b>Weight</b>	6lbs (2.72kg)	6lbs (2.72kg)	8lbs (3.6kg)
<b>Dimensions (DxWxH)</b>	7¾ x 10 x 2" (196 x 254 x 50mm)	7¾ x 10 x 2" (196 x 254 x 50mm)	7¾ x 14¾ x 2" (196 x 364 x 50mm)



**FDP SPORT V2**

**FDP 1.2000**

<b>Type</b>	Motorcycle & All-Terrain 4-Channel Full Range Class D Amplifier	Premium Mono Class D Subwoofer Amplifier
<b>Power (4Ω)</b>	4 x 150W RMS	1 x 1200W RMS
<b>Power (2Ω)</b>	4 x 200W RMS	1 x 2000W RMS
<b>Power (bridged 4Ω)</b>	2 x 400W RMS	-
<b>Crossovers</b>	High Pass 10Hz - 150Hz Low Pass 45Hz - 150Hz	High Pass 8-53Hz Low Pass 40-350Hz
<b>Copy mode</b>	-	-
<b>Functions</b>		Sub Harmonic Synthesizer
<b>Phase adjustment</b>	-	Yes
<b>Protections</b>	Short circuit / Over-current / Reverse polarity / DC / Voltage drop / Heat protection	Short circuit / Over-current / Reverse polarity / DC / Voltage drop / Heat protection
<b>Accessories</b>	Wires, Harley Molex Harnesses, Mount Screws	Sub Level Remote, Mount Screws, Mount Brackets
<b>Weight</b>	3lb (1.4kg)	12lbs (5.44kg)
<b>Dimensions (DxWxH)</b>	8¼ x 5 x 1½" (208 x 127 x 41mm)	7¾ x 19 x 2" (196 x 482 x 50mm)



### FSP-8

<b>Type</b>	8-channel sound processor
<b>Inputs</b>	Selectable high/low-level inputs for compatibility with factory or after-market head units High-resolution digital input (24 bits/192kHz) Auxiliary stereo input
<b>Max output (with 10 kΩ)</b>	3.4V
<b>Frequency response</b>	Digital crossover OFF/-3 dB: 5Hz - 21kHz
<b>Signal/Noise rati</b>	-90dBA (analog input) -99dBA (optical)
<b>Distortion - 10 kΩ - @ 1kHz (with 22kHz Low-Pass filter)</b>	0.02 %
<b>Accessoires</b>	Remote control with LED screen (sold separately)
<b>Dimensions (DxHxW)</b>	5 <sup>5</sup> / <sub>16</sub> "x8 <sup>9</sup> / <sub>16</sub> "x1 <sup>7</sup> / <sub>8</sub> " (135 x 218 x 48mm)



### FSP-8 REMOTE CONTROL

Enables you to control the main functions of the FSP-8: Adjust overall gain, subwoofer volume, and input selection for the FSP-8 Reminds you of the stored pre-sets Notched knob LED backlit screen



### B.A.M XXXL

1 roll of 19<sup>1</sup>/<sub>16</sub>" x 236<sup>1</sup>/<sub>4</sub>"  
(50 x 600cm) (3m<sup>2</sup>)

### B.A.M XL

1 sheet 19<sup>1</sup>/<sub>16</sub>" x 78<sup>3</sup>/<sub>4</sub>"  
(50x200cm) (1m<sup>2</sup>)



### IMPULSE 4.320

<b>Type</b>	Class D ultra-compact Amplifier - 4/3/2 channels
<b>CEA power (4Ω)</b>	4 x 55W RMS
<b>Max. power (2Ω)</b>	4 x 80W RMS
<b>Max. power (4Ω bridged)</b>	2 x 160W RMS
<b>Crossovers</b>	Activable/deactivable fixed at 75Hz on channels 1/2 Configurable from 40Hz-200Hz on channels 3/4
<b>Copy Mode</b>	4 CH/2CH
<b>Setting</b>	Adjustable phase on channels 3/4
<b>Protections</b>	Short circuit / Over-current / Reverse polarity / DC / Voltage drop / Heat protection
<b>Weight</b>	1.2lbs (550g)
<b>Dimensions (LxHxD)</b>	6 <sup>7</sup> / <sub>8</sub> " x 1 <sup>7</sup> / <sub>8</sub> " x 2 <sup>5</sup> / <sub>8</sub> " (175 x 47 x 66.5mm)



### IY - AC IMPULSE 4.320

Adapter Y cable  
Focal Impulse 4.320



### HILO V3

<b>Type</b>	High-level to RCA line stereo converter
<b>Function</b>	Converts a stereo amplified signal in two low-level line outputs for an amplifier DC and AC detection modes Automatic remote output Speaker simulation network to avoid head-unit muting
<b>Bandwith (+/-1dB)</b>	10Hz - 140kHz
<b>Signal/Noise ratio</b>	100dB
<b>Distorsion</b>	< 0.01 %



For more information, find us at:

[www.focal-america.com](http://www.focal-america.com)



**ORCA**  
DESIGN & MANUFACTURING CORP.

804 CALLE PLANO; CAMARILLO, CA 93012 USA  
TEL: 1.805.484.4355 | FAX: 1.805.484.9008  
EMAIL: INFO@ORCADESIGN.COM | WWW.ORCADESIGN.COM