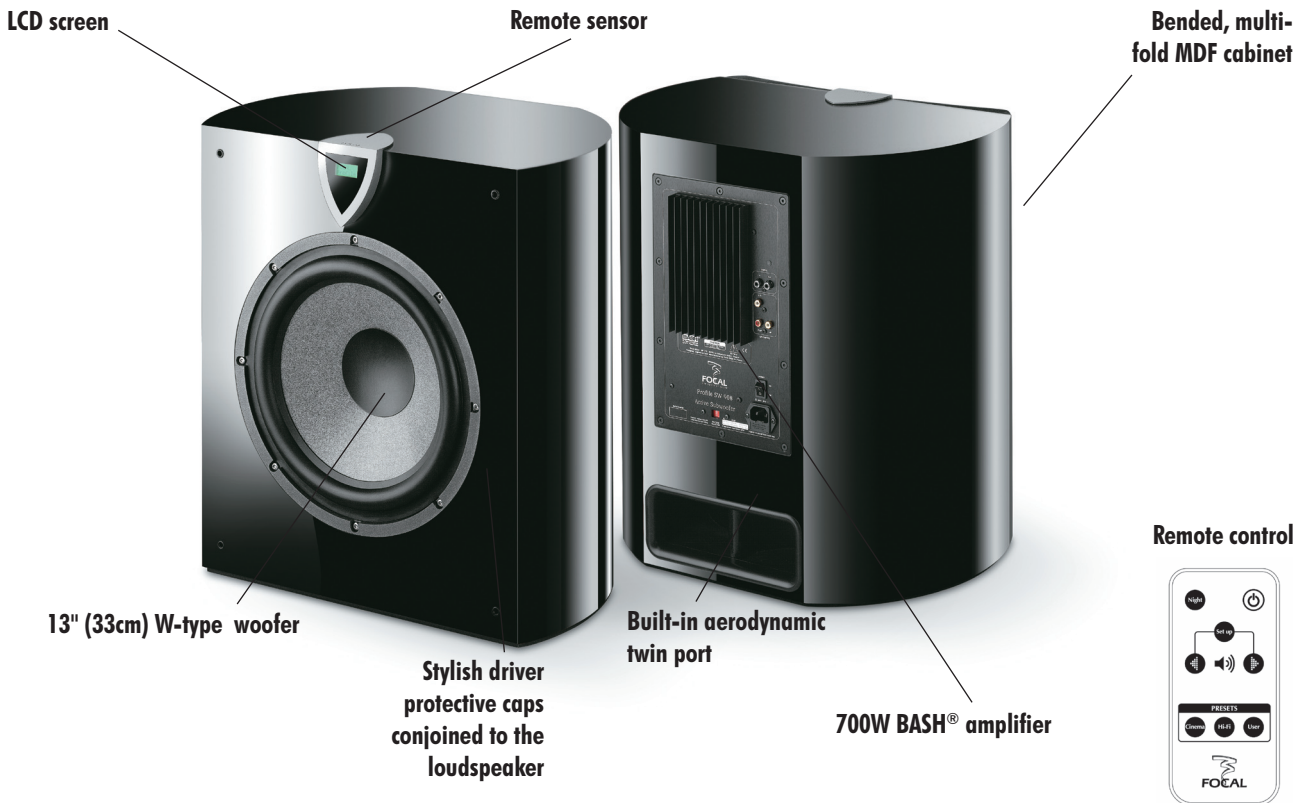


# PROFILE SW 908

Product specification sheet

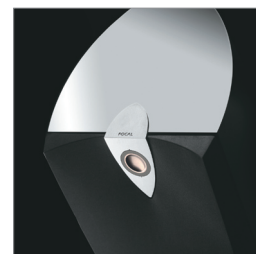


## Features

- A sophisticated **design** for maximum **performances and esthetic integration** capability.
- **Bended multi-fold MDF** cabinet for toughness and optimal damping.
- 13" **sandwich composite "W"** cone.
- Built-in **Digital Signal Processor (DSP)**.
- **Subsonic filter** for optimized sub bass in small room.
- **Night mode** (dynamic compression).
- **Boost mode**.
- High power, high efficiency **BASH®** amplifier.
- **Proprietary port** design with double deflector integral to the cabinet structure, minimizing air flow and ensuring optimal rigidity.
- **Diamond Black finish**.

## Technical specifications

Type	Active subwoofer with DSP
Drivers	13" W cone woofer
Cut-off frequency (-6dB)	23Hz
Frequency response (+/-3dB)	27 to 150Hz
Amplifier	500Wrms (700W max) BASH®
DSP section	24dB/octave active filter (50 to 150Hz), adjustable phase from 0° to 180° (by step of 1°), 24dB/octave subsonic filter (15 to 45Hz), Boost mode, Night mode, 3 users presets
Input	LFc/Stereo/Digital SPDIF coaxial
Power mode	On/Off/Autopower
Dimensions (HxWxD)	19.2x20x15" (488x510x380mm)
Net weight	59,5lbs (27kg)



**FOCAL**  
the spirit of sound