

27th ANNUAL

Franklin - Sterling

MINERAL EXHIBIT

The Fluorescent Mineral Capitol of the World

Sat. & Sun., October 1st & 2nd, 1983



Sponsored by

KIWANIS CLUB OF FRANKLIN
FRANKLIN, NEW JERSEY

PRICE 50¢

MINERAL

**S
H
O
W
C
A
S
E**

**FREE, EDUCATIONAL, NON-PROFIT
MINERAL MUSEUM
SPECIMENS FROM WORLD WIDE LOCATIONS**



**GERMAN CARVINGS
KNOTTED GEM BEADS
BOOKS, SPECIMENS, STONES**



**WE BUY
MINERAL COLLECTIONS
("FRANKLIN" of SPECIAL INTEREST)**

LEE & JENNIE ARESON

TEL. (914) 343-5051

21 IRWIN AVENUE

MIDDLETOWN, NEW YORK 10940



FRANK Z. EDWARDS

1910 - 1982

Frank Z. Edwards passed on quietly in his sleep Wednesday evening, Sept. 8, 1982 at his retirement residence in Palm Bay, Florida. Prior to his retirement in 1971, Frank was the Eastern Sales Representative for Anacortes Veneers, a division of Publishers Paper, owners of the L.A. Times.

His interests in mineralogy developed by the advent of the annual Franklin Kiwanis mineral shows held each Fall, which he became a part of as an exhibitor and later a dealer.

He served as President of the Franklin Ogdensburg Mineralogical Society for two years, 1960 and 1961. It was also during his term as President that he inherited the post of Editor of the Picking Table. It is as Editor of this journal that we are most familiar with Frank. He authored dozens of articles along the way, although only a few carried by-lines. The time he spent gathering and editing each issue, some thirty-six in all, is incalculable. He carried on for eighteen years, often inspiring others, through times often barren, that would have frustrated the efforts of a lesser person.

All of us are certainly better to have known, worked and played with Frank Z. Edwards. His sense of purpose and dedication remains with us.



The FRANKLIN-STERLING HILL MINERALS

Edited from numerous sources by John L. Baum, Curator of the Franklin Mineral Museum; August, 1983, following the nomenclature of the 1983 Glossary of Mineral Species, and with special thanks to Pete J. Dunn.

Acanthite	Cahnite	Gageite
Acmite	Calcite	Gahnite
Actinolite	Caryopilite	Galena
Adamite	Celestine	Ganomalite
Adelite	Celsian	Ganophyllite
Akrochordite	Cerussite	Gersdorffite
Albite	Chabazite	Gerstmannite
Allactite	Chalcocite	Glaucocroite
Allanite	Chalcophanite	Goethite
Alleghanyite	Chalcopyrite	Gold
Almandine	Charlesite	Goldmanite
Analcime	Chlorophoenicite	Graphite
Anatase	Chondrodite	Greenockite
Andradite	Chrysocolla	Grossular
Anglesite	Chrysotile	Grounite
Anhydrite	Clinochlore	Grovesite
Annabergite	Clinochrysotile	Guerinite
Anorthite	Clinohedrite	Gypsum
Anorthoclase	Clinzoisite	
*Anthophyllite	Conichalcite	*Halloysite
Antigorite	Connellite	Hancockite
Apophyllite	Copper	Hardystonite
Aragonite	Corundum	Hastingsite
Arsenic	Covellite	Hauckite
Arsenopyrite	Cryptomelane	Hausmannite
Augite	Cuprite	Hawleyite
Aurichalcite	*Cuspidine	Hedenbergite
Austinite		Hedyphane
Azurite	Datolite	Hematite
	Descloizite	Hematolite-like mineral
Bakerite	Develline	Hemimorphite
Bannisterite	Diopside	Hendricksite
Barite	Djurleite	Hercynite
Barium-pharmacosiderite	Dolomite	Hetaerolite
Barylite	Draivite	Heulandite
Barysilite	Dypingite	Hexahydrite
Bassanite		Hodgkinsonite
Baumhauerite	Edenite	Holdenite
Baumite	Epidote	Huebnerite
Bementite	Epsomite	Humite
Berthierite	Erythrite	Hyalophane
Biotite	Esperite	Hydrohetaerolite
Birnessite	Eveite	*Hydromica
Bornite		Hydrotalcite
Bostwickite	Fayalite	Hydrozincite
Brandtite	Feitnechtite	
Brochantite	Ferristilpnomelane	*Illite
Brookite	*Ferroaxinite	Ilmenite
Brucite	Flinkite	
Brunsvigite	Fluoborite	
Bultfonteinite	Fluorapatite	
Bustamite	Fluorite	
	Forsterite	
	Franklinite	
	Friedelite	

Jacobsite	Ogdensburgite	Starkeyite
Jarosewichite	Ojuelaite	Sterlinghillite
Jerrygibbsite	Orthoclase	*Stibnite
Johannsenite	*Oyelite	Stilbite
Johnbaumite		Stilpnomelane
	Pararammelsbergite	Strontianite
Kaolinite	Parasymplesite	Sussexite
*Kentrolite	Pargasite	Svabite
Kittatinnyite	*Parsettensite	Synadelphite
Koettingite	Pectolite	
Kolicite	Pharmacosiderite	Talc
Kraisslite	Phlogopite	*Talmessite
Kutnohorite	Picropharmacolite	Tennantite
	Pimelite	Tephroite
Larsenite	Powellite	Thomsonite
Lawsonbauerite	Prehnite	*Thorite
Lead	Pumpellyite	Thortveitite
Legrandite	Pyrite	Tilasite
Lennilenapeite	Pyroaurite	Tirodite
Leucophoenicite	Pyrobelonite	Titanite
Linarite	Pyrochroite	Todorokite
Loellingite	Pyrophanite	Torreyite
Loseyite	Pyroxmangite	Tremolite
	Pyrrhotite	
Magnesiohornblende		Uraninite
Magnesioriebeckite	Quartz	Uranophane
Magnesium-chlorophoenicite		Uranospinite
Magnetite	Rammelsbergite	Uvite
Magnussonite	Realgar	
Malachite	Retzian -(Nd)	Vesuvianite
Manganaxinite	Rhodochrosite	
Manganberzeliite	Rhodonite	Wallkilldellite
Manganese-hoernesite	Richterite	Willemite
Manganosite	Riebeckite	Wollastonite
Manganpyrosmalite	Roeblingite	Woodruffite
Marcasite	Romeite	Wurtzite
Margarite	*Rosasite	
Margarosanite	Roweite	Xonotlite
Marialite	Rutile	
Marsturite		Yeatmanite
Mcallisterite	Safflorite	Yukonite
Mcgovernite	Sarkinite	
*Melanterite	Sauconite	Zinalsite
Metalodevite	Schallerite	Zincite
Microcline	Scheelite	Zinkenite
Mimetite	Scorodite	Zircon
Minehillite	Seligmannite	
Molybdenite	*Sepiolite	
Monohydrocalcite	Serpierite	
Mooreite	Siderite	Total = 299 species
Muscovite	Sillimanite	
	Silver	
Nasonite	Sjogrenite	
Natrolite	Skutterudite	
Nelenite	Smithsonite	
Neotocite	Sonolite	
Newberyite	Spessartine	
Nickeline	Sphalerite	
Nontronite	Spinel	
Norbergite		

* -Reported but not confirmed with certainty.

DIANA LYNN CUBBY

Diana Lynn Cubby, holds the position of manager of the Franklin Mineral Museum since the Spring opening of this year. She is replacing Joan Thomas, who served as manager since 1976, and resigned her position effective the fall of 1982.



Joan Thomas served through some difficult years for the museum, especially the lean years created by the Arab Oil Crisis, which curtailed pleasure travel and changed the lifestyle of many Americans. Joan's dedication to the museum, contributed to its continued success, which was sincerely appreciated. Joan contributed her time at the Spring opening, to assist Diana, so the transition period would go smoothly and the museum would continue its high standards of established principles and policies.

Diana Cubby, who is completing her first season as manager, is a Magna Cum Laude graduate from Montclair State College, has eight years teaching experience, some with gifted and talented students. She has instituted new ideas and innovations, which has already shown results in the museum's attendance and income. Diana speaks French and Spanish which has proven helpful with our foreign visitors to the museum. The Board of Directors are confident the museum management is in good hands.

Assisting Diana, in providing full service, is Frank Hete, who is the Mine Replica Guide. Frank has 25 years experience working with all equipment and on all levels of the Sterling Mine. Children enjoy him.

Ronald Bryant, is a part time guide for the Mineral and Fluorescent Display Room. Ronnie has 47 years experience working in the Franklin and Sterling Mines. He started in the sheet metal shop, was foreman of the Machine Shop and retired as Supervisor.

The other part time Guide is Gary Cardinale, who has a B.S. degree in Physics, 11 year teaching Physical and Earth Sciences, 18 years teaching and collecting minerals and fossils and devoted to Franklin Mineral.

To complete this talented staff is our Curator, Jack Baum, who has 32 years experience as Geologist for the N. J. Zinc Co. Jack is a well known and respected authority on all minerals. We are proud of this talented and experienced staff, that is responsible for the success of the Franklin Mineral Museum.

Minerals Unique to Franklin and Sterling Hill

BAUMITE	$(\text{Mg}, \text{Mn}, \text{Fe}, \text{Zn})_3(\text{Si}, \text{Al})_2\text{O}_5(\text{OH})_4$
BOSTWICKITE	$\text{CaMn}^{3+}_6\text{Si}_3\text{O}_{36} \cdot 7\text{H}_2\text{O}$
CHARLESITE	$\text{Ca}_6(\text{Al}, \text{Si})_2(\text{SO}_4)_2[\text{B}(\text{OH})_4](\text{OH})_{12} \cdot 26\text{H}_2\text{O}$
CHLOROPHOENICITE	$\text{Mn}_3\text{Zn}_2(\text{OH})_6[\text{As}_0.5\text{H}_0.5(\text{O}, \text{OH})_3]_2$
ESPERITE	$(\text{Ca}, \text{Pb})\text{ZnSiO}_4$
GERSTMANNITE	$(\text{Mg}, \text{Mn})_2\text{ZnSiO}_4(\text{OH})_2$
HANCOCKITE	$(\text{Pb}, \text{Ca}, \text{Sr})_2(\text{Al}, \text{Fe}^{3+})_3(\text{SiO}_4)_3(\text{OH})$
HARDYSTONITE	$\text{Ca}_2\text{ZnSi}_2\text{O}_7$
HAUCKITE	$(\text{Mn}, \text{Mg})_{24}\text{Zn}_{18}\text{Fe}^{3+}_3(\text{SO}_4)_4(\text{CO}_3)_2(\text{OH})_{81}$
HENDRICKSITE	$\text{K}(\text{Zn}, \text{Mg})_3\text{Si}_3\text{AlO}_{10}(\text{OH})_2$
HODGKINSONITE	$\text{Zn}_2\text{Mn}(\text{SiO}_4)(\text{OH})_2$
HOLDENITE	$(\text{Mn}, \text{Mg})_6\text{Zn}_3(\text{OH})_8(\text{AsO}_4)_2(\text{SiO}_4)$
JAROSEWICHITE	$\text{Mn}_2\text{Mn}^{3+}(\text{AsO}_4)(\text{OH})_6$
JERRYGIBBSITE	$\text{Mn}_9(\text{SiO}_4)_4(\text{OH})_2$
JOHNBAUMITE	$\text{Ca}_5(\text{AsO}_4)_3(\text{OH})$
KITTATINNYITE	$\text{Ca}_4\text{Mn}^{3+}_4\text{Mn}^{2+}_2\text{Si}_4\text{O}_{16}(\text{OH})_8 \cdot 18\text{H}_2\text{O}$
KOLICITE	$\text{Mn}_7\text{Zn}_4(\text{AsO}_4)_2(\text{SiO}_4)_2(\text{OH})_8$
KRAISSLITE	$\text{Fe}^{3+}_2\text{Mg}_4\text{Mn}_{44}\text{Zn}_6(\text{AsO}_4)_6(\text{AsO}_3)_4(\text{SiO}_4)_{12}(\text{OH})_{36}$
LAWSONBAUERITE	$(\text{Mn}, \text{Mg})_9\text{Zn}_4(\text{SO}_4)_2(\text{OH})_{22} \cdot 8\text{H}_2\text{O}$
LENNILENAPEITE	$\text{K}_{6-7}(\text{Mg}, \text{Mn}, \text{Zn}, \text{Fe})_{48}(\text{Si}, \text{Al})_{72}(\text{O}, \text{OH})_{216} \cdot 16\text{H}_2\text{O}$
LOSEYITE	$(\text{Mn}, \text{Mg})_4\text{Zn}_3(\text{CO}_3)_2(\text{OH})_{10}$
MAGNESIUM-CHLOROPHOENICITE	$(\text{Mg}, \text{Mn})_3\text{Zn}_2(\text{OH})_6[\text{As}_0.5\text{H}_0.5(\text{O}, \text{OH})_3]_2$
MARSTURITE	$\text{Mn}_3\text{CaNaHSi}_5\text{O}_{15}$
MCGOVERNITE	a complex $\text{Mg}, \text{Mn}, \text{Zn}, \text{Fe}^{3+}, \text{As}^{3+}, \text{As}^{5+}, \text{Si}, (\text{OH})$ mineral.
MINEHILLITE	$\text{K}_{2-3}\text{Ca}_{28}[\text{Zn}_{-4}\text{Al}_4\text{Si}_{40}\text{O}_{112}(\text{OH})_4](\text{OH})_{12}$
MOOREITE	$\approx \text{Mg}_9\text{Mn}_2\text{Zn}_4(\text{SO}_4)_2(\text{OH})_{26} \cdot 8\text{H}_2\text{O}$
NELENITE	$\text{Mn}_{16}\text{Si}_{12}\text{O}_{30}(\text{OH})_{14}[\text{As}^{3+}_3\text{O}_6(\text{OH})_3]$
OGDENSBURGITE	$\text{Ca}_3\text{ZnFe}^{3+}_6(\text{AsO}_4)_5(\text{OH})_{11} \cdot 5\text{H}_2\text{O}$
RETZIAN - (Nd)	$\text{Mn}_2\text{Nd}(\text{AsO}_4)(\text{OH})_4$
SCHALLERITE	$\text{Mn}_{16}\text{Si}_{12}\text{O}_{30}(\text{OH})_{14}[\text{As}^{3+}_3\text{O}_6(\text{OH})_3]$
STERLINGHILLITE	$\text{Mn}_3(\text{AsO}_4)_2 \cdot 4\text{H}_2\text{O}$
TORREYITE	$(\text{Mg}, \text{Mn})_9\text{Zn}_4(\text{SO}_4)_2(\text{OH})_{22} \cdot 8\text{H}_2\text{O}$
WALKKILLDELLITE	$\text{Ca}_4\text{Mn}^{2+}_6\text{As}^{5+}_4\text{O}_{16}(\text{OH})_8 \cdot 18\text{H}_2\text{O}$
YEATMANITE	$[\text{Mn}_5\text{Sb}_2][\text{Mn}_2\text{Zn}_8\text{Si}_4]_2\text{O}_{28}$

William H. Frey *Co., Inc.*

Insurance Service Since 1901
ALL LINES OF INSURANCE

- AUTOMOBILE
- FIRE (PERSONAL & COMMERCIAL)
- HOMEOWNERS
- LIFE & ACCIDENT
- GROUP LIFE & MAJOR MEDICAL
- MARINE
- UMBRELLAS
- FIDELITY & SURETY BONDS (POWER OF ATTORNEY)
- FARMS
- COMMERCIAL & PERSONAL PACKAGE POLICIES

383 ROUTE 23, BOX 295

FRANKLIN, N.J. 07416

(201) 827-9720

STAR ROUTE 94, BOX 5

VERNON, N.J. 07462

(201) 764-3122

Fluorescent Minerals of Franklin and Sterling Hill, N. J.

A 1983 CHECK-LIST BASED ON OBSERVATIONS BY RICHARD C. BOSTWICK

*The fluorescence of most local minerals is brightest under short wave ultraviolet light (SW). Species marked with an *asterisk fluoresce brighter under long wave ultraviolet light (LW) Certain minerals fluoresce two colors under different wave-lengths; these are noted as follows: blue SW/cream LW. Unusual or rare fluorescent responses are listed in parentheses.*

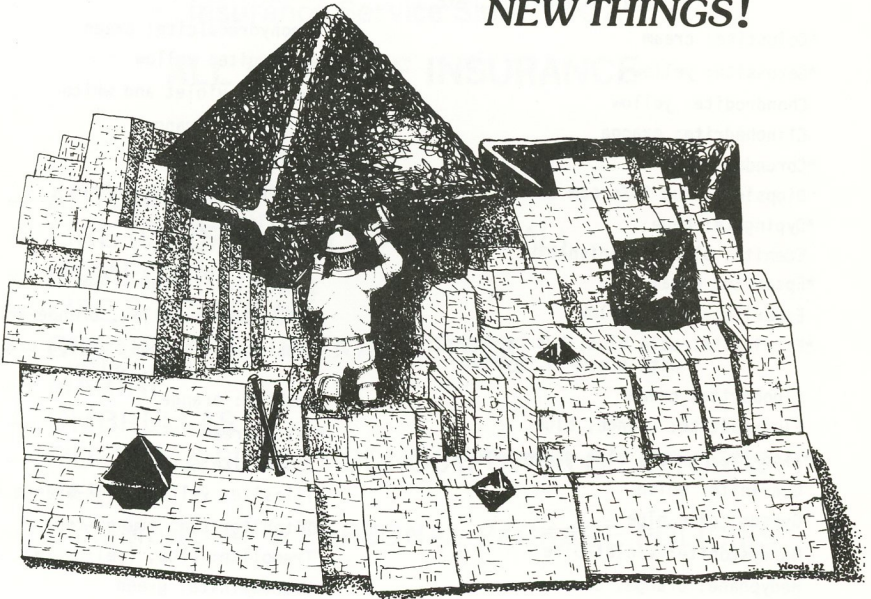
- | | |
|---|---|
| *Aragonite: white to cream, (green SW) | Margarite: blue |
| Barite: white, blue-white, cream, tan,
(pale green LW) | Margarosanita: blue, red SW/red,
cream, orange LW |
| Barylite: pale blue | Marialite: red, (pink, yellow-orange,
yellow, cream) |
| *Bustamite: red | Microcline: blue, red |
| Cahnite: cream | Mimetite: orange |
| Calcite: red, (pink, orange, cream, tan,
green, blue-violet, etc.) | Minehillite: Violet |
| *Celestite: cream | Monohydrocalcite: green |
| *Cerussite: yellow | Norbergite: yellow |
| Chondrodite: yellow | Oyelite: violet and white |
| Clinohedrite: orange | Pectolite: orange |
| *Corundum: red | Phlogopite: yellow |
| Diopside: blue SW/cream LW | *Picroparmacolite: white |
| *Dypingite: blue | Powellite: yellow |
| Edenite: blue, greenish-blue | Prehnite: "peach" |
| *Epsomite: cream | Scheelite: Yellow - Red |
| Esperite: lemon-yellow | *Smithsonite: yellow, orange-yellow |
| *Ettringite: pale blue, but coated
with cream-fl. gypsum | *Sphalerite: orange, golden orange,
blue, yellow |
| Fluoborite: cream | Svabite: orange |
| Fluorapatite: orange, blue | *Talc: cream |
| *Fluorite: green, blue-green, violet | Thomsonite: cream |
| Guerinite: white | Tilasite: yellow, pink-orange (?) |
| Gypsum: pale blue | Titanite: tan, orange-tan |
| Hardystonite: violet-blue | Tremolite: blue, (yellow LW) |
| Hedyphane: orange, cream | Uranospinite: green |
| *Hemimorphite: white, (green SW) | Uvite: yellow |
| *Hodgkinsonite: red | Willemite: green, (pale greenish
yellow to orange) |
| Hyalophane: red | Wollastonite: orange to yellow |
| *Hydrocalcite: cream | Xonotlite: blue |
| Hydrozincite: blue | *Zincite: yellow |
| Johnbaumite: orange | Zircon: orange |
| Manganaxinite: red | |

**Congratulations and Best Wishes
for a Successful Show!**

JIM'S GEMS

Always trying to uncover

NEW THINGS!



*Franklin/Sterling Classics
Crystals/Micros and Macros*

*Recent Ogdensburg Finds
Fabulous Fluorescents*

Spacious new store open 7 days a week. Only 30 minutes from Franklin or N.Y.C.

JIM'S GEMS, INC.

1581 Rt. 23, Wayne, N.J. 07470 (201) 628-0277

SPEAKER PROGRAM

Saturday: October 1, 1983

2:00 P.M. Professor Clifford Frondel
Harvard University
"Franklin and Mineralogy"

Sunday: October 2, 1983

1:00 P.M. Bernard T. Kozykowski
Franklin-Ogdensburg Mineralogical Society
"Franklin and Sterling Hill Today"



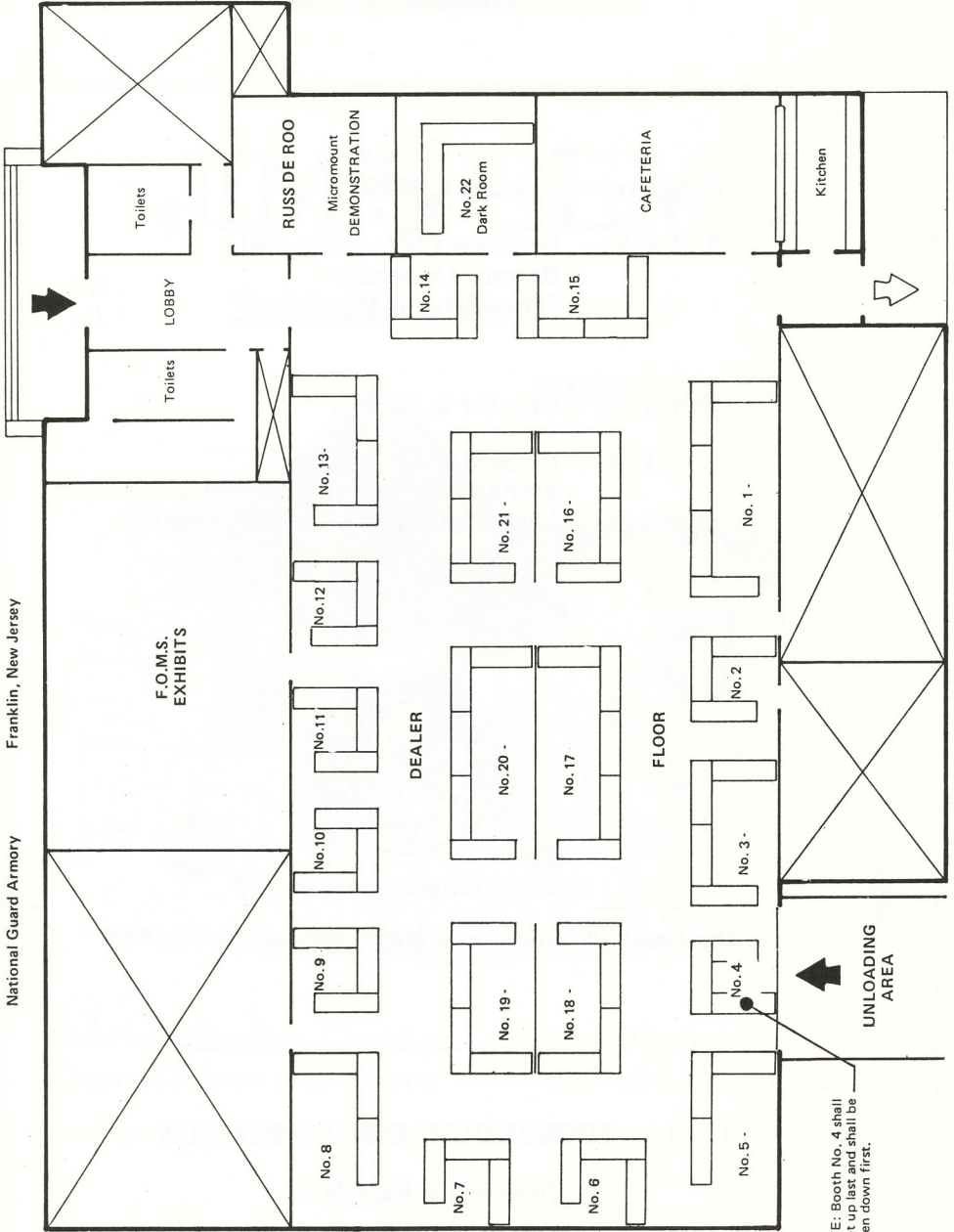
*Speaker program courtesy of
the Franklin-Ogdensburg Mineralogical Society, Inc.*

MICROMOUNT DEMONSTRATION

directed by Russ de Roo

FRANKLIN-STERLING HILL MINERAL SHOW
KIWANIS CLUB OF FRANKLIN
National Guard Armory
Franklin, New Jersey

MAIN ENTRANCE



NOTE: Booth No. 4 shall be set up last and shall be broken down first.

Scale: 1/16" = 1'-0"



Drill Floor 60' X 120'

BUS PICK-UPS

MINERAL DEALERS ATTENDING THE 1983 FRANKLIN-STERLING MINERAL SHOW

1. Mineral Showcase, 21 Irwin Ave., Middletown, N.Y. 10940
 2. Artrox, Inc., 12496 Montana Ave., El Paso, Texas 79936
 3. Merker Minerals, 416 Bowen Street, Dayton, Ohio 45410
 4. Treasures To Wear, 13 Earlwood Drive, Poughkeepsie, N.Y. 12603
 5. Gilman's, E. Durham, Box 103, Hellertown, PA. 18055
 6. David M. Crawford, 1808 Harlem Blvd., Rockford, Illinois 61103
 7. The Mineral Cabinet, P.O. Box 814, New Providence, N.J. 07974
 8. The Silver Pick, 1682 St. Johns Ave., Merrick, New York 11566
 9. Ake L. Anderson, 31 Prospect St., Huntington, L.I., N.Y. 11743
 10. Excalibur Mineral Co., 7 Grover Road, Dover, N.J. 07801
 11. Lawrence H. Conklin, 62 St. John's Place, New Canaan, CT. 06840
 12. Aurora Mineral Corp., 81 West Merrick Rd., Freeport, N.Y. 11520
 13. The Rocksmiths, 5th & Toughnut, P.O. Box 157, Tombstone, Arizona 85638
 14. The Gemmerly, R.D. 3, Box 397, Sussex, N.J. 07461
 15. Jim's Gems Inc., 1581 Route 23 South, Wayne, New Jersey 07470
 16. Schmitz Lapidary, 120 Center Street, Pompton Lakes, N. J. 07442
 17. Martins Minerals, P.O. Box 811, Willoughby, Ohio 44094
 18. The Lesnicks, 8405 Rawhide Tr., Tucson, Arizona 85715
 19. Howard Minerals, 2775 Bedford Ave., Brooklyn, N.Y. 11210
 20. Roberts Minerals, P.O. Box 1267, Twain Harte, California 95383
 21. Rainbow Gemcraft, 125-11 103rd Ave., Richmond Hill, New York 11419
-

The officers and members of the Kiwanis Club of Franklin and the officers and Board of Directors of the Franklin Mineral Museum, express their sincere appreciation to

 *Mary E. Worley* 

whose extraordinary contributions to the Franklin Mineral Museum insures its continued success.

827-9501

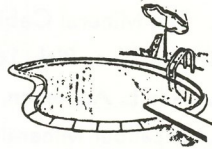
● Serving All of Sussex County

RAY'S POOL SERVICE

POOLS • PATIOS INSTALLED

Round — Rectangular — Oval — Double Grecian End

- Spring & Winter Service
- Filters Heater Repair & Replacement
- Leaky Pools Fixed
- Liner Replacement
- Chemicals & Accessories



FREE COMPUTER WATER ANALYSIS

ROUTE 23

FRANKLIN, N. J.



"You'll get
Big Meals
at Small
Prices at
Gulliver's"

Route 23
Franklin, N.J.
201-827-7755

Rockaway Town Square
Rockaway
New Jersey
201-361-9021

Middletown, N.Y.
914-343-5624

Gulliver's
Fish & chips

27th Annual Franklin-Sterling Hill Mineral Show

EXHIBITORS

- LEE ARESON
- JOHN L. BAUM
- PHILIP P. BETANCOURT
- RICHARD C. BOSTWICK
- JOHN CIANCIULLI
- JOSEPH CILEN
- RUSS de ROO
- GERSTMANN *Franklin Mineral Museum*
- RICHARD & ELNA HAUCK
- JOHN KOLIC
- WARREN E. MILLER
- FRED J. PARKER
- DON PHISTER
- PINCH MINERALOGICAL MUSEUM
- RUTGERS UNIVERSITY
- JOHN E. SEBASTIAN
- AL SMITH
- WILFRED R. WELSH



Exhibits courtesy of the Franklin-Ogdensburg Mineralogical Society, Inc.
John Cianciulli - Exhibits Chairman



JOIN
KIWANIS

write:

Membership Committee
FRANKLIN KIWANIS
BOX 76
FRANKLIN, N.J.



Antonio's
Fine Italian & American Cuisine

RT. 94, HAMBURG
 Short Distance From Americana
827-6033
 Major Credit Cards Accepted

SOME SPECIALTIES OF THE HOUSE
 Veal Scalopini Sorento • Fish Antonio
 Scungille Marinara • Calamari marinara
 Eggplant Rollantine • Veal Caprice
 Medaglione marsala • Chicken Cacciatore
 Veal Scalopini Piccato • Shrimp Parmagiana
 Plus Much More
 Childrens Menu Available

HAPPY HOUR
 Mon. to Fri. 3-5
 Mussels • Sausage & Peppers • Meatballs

Entertainment
Joe Amato
5 Nights A Week
 Mon., Wed., Thurs.
 Fri. & Sat.

OPEN 7 DAYS A WEEK
GIFT CERTIFICATES AVAILABLE

It's great to be involved!

All of us at Fidelity Union Bank are proud to be involved in special occasions just like this one. We also take pride in serving the financial needs of New Jersey the best way we know how.

That means you'll always be greeted by friendly people. Your accounts will be handled by expert bankers. And you'll be able to take advantage of all the latest banking innovations and technology.

So stop by any Fidelity Union office and ask some questions — we're sure you'll like our answers.

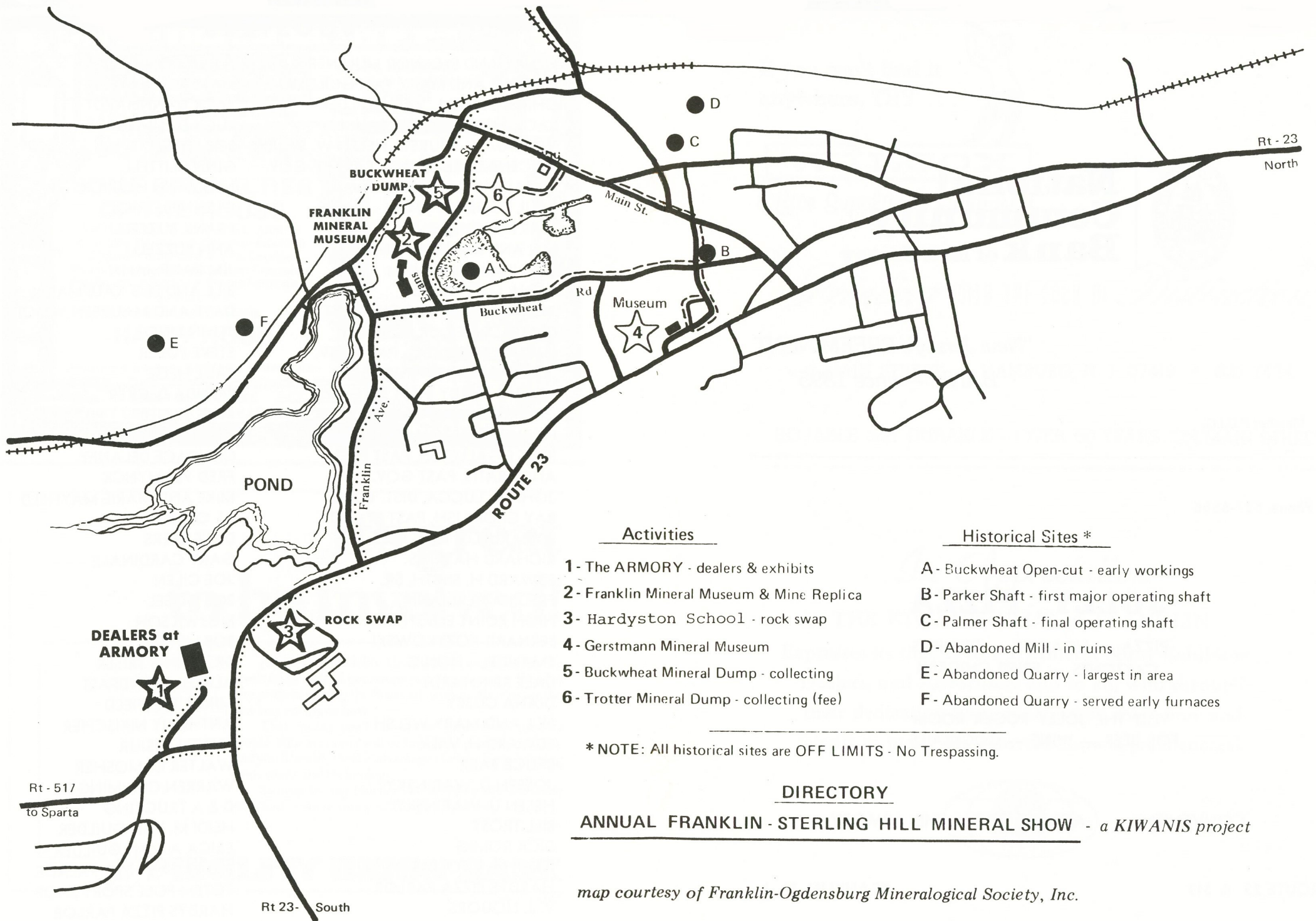
 **FIDELITY UNION BANK**

Member FDIC

BOOSTERS

HENRY AND ELEANOR MULLNER
HAROLD AND MARY VAN GUILDER
CHRISTOPHER L. VAN GUILDER
JACK AND AUGUSTA BAUM
WILLIAM W. WURST - HELEN W. WURST
VINCENT SORRENTINO, PAST LT. GOV.
GERARD WOORTMAN
PAUL H. GRAU
MARY ELLEN GRAU
MR. AND MRS. LEE TRIMBLE
DENNIS McELHINNEY
ANNA McELHINNEY
DONALD CAIRNS, GOV. ELECT
CHARLES KIER, JR.
LUCIAN FORD, D.C., PAST GOV.
IRA SHELDON, PAST LT. GOV.
WYBERT PURDY, PAST LT. GOV.
CHARLES HAAS, PAST LT. GOV.
HARVEY MORTON, PAST LT. GOV.
BRUCE GALLETTO, PAST PRES.
ANDY BATIS, PAST GOV.
JOHN A. LUCCA, DIST. TREAS.
RAY CROMLISH, PAST LT. GOV.
ED RARULLO, PAST PRES.
RICHARD HASKINS
EDWARD H. SMITH, SR.
FRED KATTERMANN
HIGH POINT ELECTRIC
BERNARD KOZYKOWSKI
EMANUEL HONIG
DALE REINHARDT
DIANA CUBBY
BILL AND MARY WELSH
EDWARD H. WILK
BRUCE BARR
JOSEPH D. WARINSKY
HELEN U. WARINSKY
BILL TROST
DICK ROMIG
RALPH E. THOMAS
HARDYS PIZZA PARLOR
V. J. LIQUORS

JOSEPH G. REILLY
MARY E. REILLY
JACK DANNHARDT
LUCY DANNHARDT
BOB LITTELL
GINNY LITTELL
MARYANN HETRICK
GLENN HETRICK
FRANK BUZZELLI
ANN BUZZELLI
JIM KAUFMANN
BILL AND PEG KAUFMANN
DAVE AND MAUREEN WOODS
JOHN LINO
STEVE POBER
PAUL HEISE
BRENDA DECKER
MIKE SIEGEL
HARVEY SIEGEL
CANDACE DELANEY
FRED VLAMYNCK
MIKE AND MARIE MAYFIELD
AL COHEN
DAVE BYERS
GARY CARDINALE
JOE CILEN
BOB GOBEL
MEL WILSON
BOB MEYERS
DR. IRVING TRISER
ALFRED STANDFAST
MIKE LITTLEFIELD
ANTHONY NIKISCHER
STEVEN MISIUR
WALTER O. MOSHER
WARREN CUMMINGS
D & A TRUCKING
HEIDI M. VAN GUILDER
ERICA A. VAN GUILDER
BARBARA'S HAIR PALACE
TOTEM POLE SPORT SHOP
HARDYS PIZZA PARLOR



Activities

- 1 - The ARMORY - dealers & exhibits
- 2 - Franklin Mineral Museum & Mine Replica
- 3 - Hardyston School - rock swap
- 4 - Gerstmann Mineral Museum
- 5 - Buckwheat Mineral Dump - collecting
- 6 - Trotter Mineral Dump - collecting (fee)

Historical Sites *

- A - Buckwheat Open-cut - early workings
- B - Parker Shaft - first major operating shaft
- C - Palmer Shaft - final operating shaft
- D - Abandoned Mill - in ruins
- E - Abandoned Quarry - largest in area
- F - Abandoned Quarry - served early furnaces

* NOTE: All historical sites are OFF LIMITS - No Trespassing.

DIRECTORY

ANNUAL FRANKLIN - STERLING HILL MINERAL SHOW - a KIWANIS project

map courtesy of Franklin-Ogdensburg Mineralogical Society, Inc.



**National
Community
Bank** of New Jersey

*"New Jersey's PREEMINENT
BANK — since 1895"*

Member F.D.I.C.

Phone 827-6565

JOLLY PIZZA

PIZZA — HOAGIES — DINNERS
CALZONES — FRIED CHICKEN

VISIT THE JOLLY ROGER ROOM
FOR BEER — WINE — COCKTAILS

CONVENIENT - ACROSS FROM THE ARMORY

ROUTE 23 & 517

FRANKLIN, N. J.

If you can't find it
anywhere, TRY . . .



WILCOX

Office Supplies & Equipment

FOR

Printing WITH THE LOOK OF *Distinction**

6 MAIN STREET • HAMBURG, N. J. 07419 • 827-7474

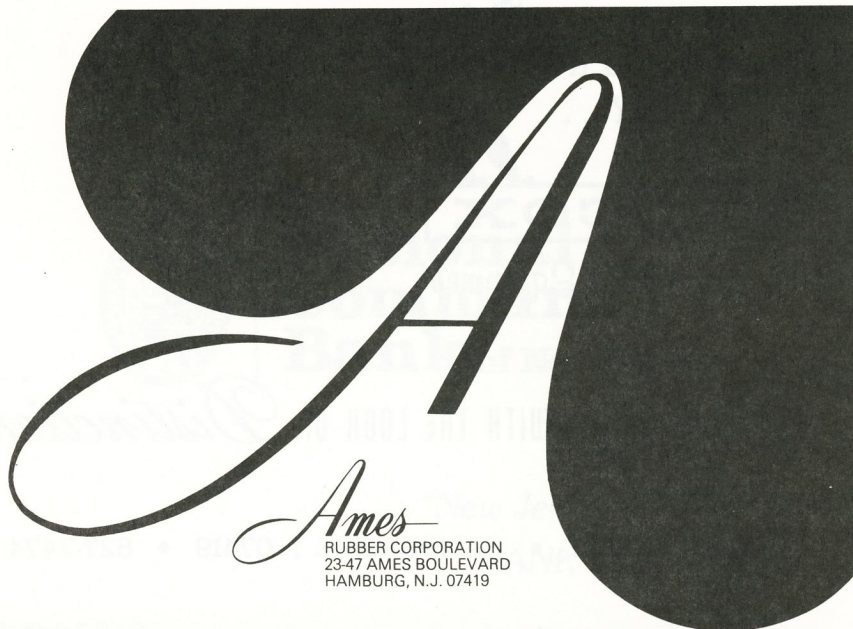
RELIABLE and DURABLE - OVER 60 YEARS ON MAIN STREET

In Appreciation

THE KIWANIS CLUB of FRANKLIN

Expresses its thanks to the Mineral Show Exhibitors,
Dealers, and Advertisers and to all, who through
their dedication have contributed their time and
talents to make the Mineral Show a great success.





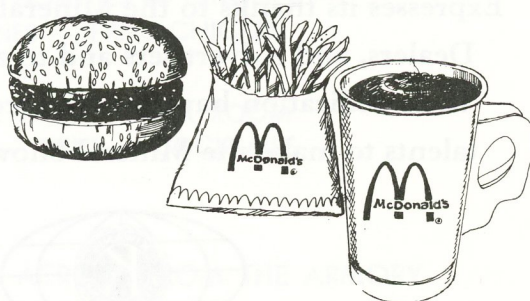
THREE REASONS

TO EAT AT FRANKLIN



We're close by

**From the Armory:
1 mile North of Route 23**



where your dollar gets a break everyday™



FULL SERVICE CATERING

By RITA & DOUG THOMSON

PIZZA PLUS Restaurant

ROUTE 23
HAMBURG, N. J. 07419
(201) 875-5990



FRANKLIN-OGDENSBURG MINERALOGICAL SOCIETY, INC.

The Franklin-Ogdensburg Mineralogical Society, Inc., is an organization established to provide programs designed to benefit the community, the collector and those interested in the minerals, mineralogy and geology of the Franklin-Ogdensburg area of New Jersey.



Join us for: Field Trips, Lectures, Study Programs and Publications.



HAMBURG PLUMBING SUPPLY CO., INC.

WHOLESALE PLUMBING & HEATING SUPPLIES

RT. #23 SOUTH & PRINCE ST.
HAMBURG, N. J. 07419

201 - 827-2553

BEST WISHES FROM YOUR FRIENDLY COUNTY CLERK!

HONEY ACKERMAN

(Available To Speak To Your Club or Organization —

Call Me at 383-1150)

the QUARRY 

SWIMMING -

SCUBA DIVING -

CROSS COUNTRY SKIING -

ROUTE 517 — HAMBURG, N. J. 07419

(201) 827-4200



GENERAL INSURANCE

Harry E. Watt Agency

2 ROWE PLACE, FRANKLIN, N.J. 07416
827-9080

Agents For

SELECTED RISK INS. CO. • HARTFORD INSURANCE CO.

WM. D. SCOTT
MARIE J. SCOTT

827-6296



E & A DRY CLEANERS AND TAILORS

DRY CLEANING AND TAILORING

340 MAIN STREET

OGDENSBURG, N. J. 07439

Tel. 875-5438

Handcrafted Sterling Silver Jewelry

THE GEMMERY

J & J WITHEY

R.D. 3, BOX 397

SUSSEX, N. J. 07461



827-9195

HAMBURG PHARMACY

S. L. PHARMACY, INC. — STEPHEN BERGER, R.P.

ROUTE 23

HAMBURG, N. J. 07419

THE FONE BOOTH

ROUTE 23

FRANKLIN, N. J.

827-2090

Entertainment on
Monday Evenings

JEFF & VALE GAYNORS

OPEN 7 DAYS

PRIME RIBS SPECIAL

7.95

THURS., FRI., SAT., SUN. & MON.

Includes salad, baked potato
& a loaf of fresh bread.

Our Regular Menu Includes
Roast Duck, Shrimp Scampi
Lobster Tails And More

MAJOR CREDIT

A Unique Family Restaurant

**THURS. & SUN. EVE.
IN THE LOUNGE
PAUL LARSON**

**OLDIES BUT
GOODIES SOUNDS
OF**

**JOHNNY CASH
ELVIS PRESLEY
JAY BLACK
DION**

Kitchen
Open Late
Every Night



Diet
Platters
Served
Daily

**COUNTRY
WESTERN**

**FRI. & SAT
EVENINGS**

**IN THE
EXTENSION
ROOM**

Compliments of

CLARENCE and MARIAN CASE



THE SILVER PICK

Karl R. Vossbrinck
FR 8-9051

1682 St. Johns Ave.
N. Merrick, New York 11566

(201) 875-3640

SUSSEX SALES & SERVICE

Authorized Dealer for
Products of Ford Motor Company
FORD — MERCURY — FORD TRUCKS

ROUTE 23, P.O. BOX 385

SUSSEX, N. J. 07461

DUNKIN' DONUTS®

HAVE COFFEE &
DONUTS WITH US —
1 Mile North on Route
23, Franklin, N. J.

Save 50¢

Ask For The Show Special — Doz. Donuts \$2.09



47 Church St.
Franklin, N.J.
827-7135



61 Sparta Ave.
Sparta, N.J.
729-3141

GILMAN'S

"AT THE CAVE"

Box 103

Hellertown, Pa. 18055

YOUR COMPLETE LAPIDARY SUPPLY HOUSE

Phone 215/838-8767

Open every day 9 a.m. to 6:30 p.m.

Tel. 827-7670

HAMBURG HARDWARE CO.

HARDWARE—ELECTRICAL SUPPLIES

PLUMBING SUPPLIES—DE VOE PAINT

Complete Line of Wood Burning Stoves

1 MAIN STREET

HAMBURG, N. J.

MURRAY'S MINI MARKET

FULL SERVICE DELI & CATERING

Open 7 A.M. - 11 P.M. — 7 Days

342 MAIN STREET

OGDENSBURG, N. J.

875-6101



H & S CHEVROLET, Inc.

NEW CARS — USED CARS — PARTS — RELIABLE SERVICE

ROUTE 23
at the Traffic Light

2 WALLING AVE.
SUSSEX, N. J.

Compliments of . . .

WEISS' CLOTHING STORE

Levi, Wrangler, Lee, Keds, Devon, Billy The Kid
Clothes for the Entire Family

111 MAIN STREET

FRANKLIN, N. J.

We Are Looking Forward to Seeing You At The

FRANKLIN DINER

JACK and JOYCE CARROLL, Props.

ROUTE 23

FRANKLIN, N. J.

Phone 827-3708



The New DALE'S MUSIC LOUNGE

Luncheon Daily — Dinners Nightly
Entertainment Weekends

ROUTE #23

HAMBURG, N. J.

827-9966

JIM BUCHER, Manager

EXON

FRANKLIN EXXON

ALL GENERAL REPAIRS — TOWING & ROAD SERVICE
STATE INSPECTION

ROUTE 23

FRANKLIN, NEW JERSEY 07416

827-7327

NICK ZIPCO, Manager

TROTTER MINERAL DUMP

Open 7 Days A Week — Year Round

MAIN STREET

FRANKLIN, N. J.

827-9141



390 RUTHERFORD AVE.

FRANKLIN, N. J.

RAINBOW GEMCRAFT

BEST QUALITY: GEM ROUGH FINISHED GEMSTONES
BETTER JEWELRY MINERAL SPECIMENS

At Your Service at the Franklin Show, and at:

Pikesville, Md. Oct. 22-23, 1983

Garden City, L.I., N.Y. November 12-13, 1983

Hempstead, N.Y. March 3-4, 1984

BETTY & ERNIE NAPLES

RICHMOND HILL, N.Y.

COMPLIMENTS

ACKERSON PUMP CO.

BIG SPRING ROAD - FRANKLIN, N. J. 07416

827-6088

(201) 875-3550

HOME MADE BREAD & PIES

THE ELIAS COLE

FINEST FOODS PREPARED IN THE SLOCKBOWER TRADITION

ROUTE 23

(5 Miles North of Sussex))

COLESVILLE, N. J.



DEUCLERS PHARMACY

MAIN STREET
SUSSEX, N. J.

(212) 434-8538

HOWARD MINERALS

RARE SPECIES — MICROMOUNTS — FREE LIST

SEND US YOUR SPECIES — WANT LIST

P.O. BOX 56, VANDERVEER STATION

BROOKLYN, N. Y. 11210

GNEISS INDUSTRIES

MINERALS

BRUCE H. WETTEROTH

MORRISTOWN, NEW JERSEY

Office: (201) 827-7000

Regional

HARDEN FUEL OIL CO.
FUEL OIL — GASOLINE

P.O. BOX H

FRANKLIN, N. J. 07416



TELEFLORIST

827-3949

JONES FLORIST

FLOWERS FOR ALL OCCASIONS

All Major Credit Cards

ROUTE 23, 221 SOUTH

HAMBURG, N. J. 07419

Phone 827-9790

BARNEY'S, INC.

"EVERYTHING FOR THE HOME HANDY MAN
AND FOR BUSINESS MAINTENANCE NEEDS"
PAINT — HARDWARE — SEEDS & FEEDS

ROUTE 23

FRANKLIN, N. J. 07416



FOR GODDNESS SAKE EAT MONEY

Beekeeping Supplies

THOMAS J. WEBB

Apiaries in North and Central Jersey

R.D. 4 — BOX 391 SUSSEX, N. J. 07461

(201) 875-3889

TEL: (201) 827-5740

樓 福 萬
SZECHUAN GARDEN
CHINESE RESTAURANT

Szechuan, Mandarin and Cantonese Cuisine
Orders to Take out

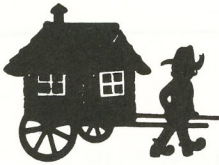
Shoprite Shopping Center
Route 23—Franklin, N.J. 07416



BREAKFAST and LUNCH DAILY
DINNER SERVED NITELY
STARTING at 5:30
CLOSED TUESDAYS

ROBIN SPORMAN
OWNER
DENNIS SURETTE
CHEF-OWNER

181 RT. 23 NORTH
HAMBURG, N.J. 07419
(201) 827-8972



Village
Peddler
REAL ESTATE INC.

827-8081

385 ROUTE 23

FRANKLIN, N.J.



Delivery Service

AMERICAN
GREETINGS
PRESCRIPTIONS

Russell Stover
CANDIES

- Gifts
- Baby Needs
- Cosmetics
- Jewelry
- Discount Film Processing
- Photo Supplies
- Newspapers, Magazines
- Lottery Tickets
- Sick Room Supplies & Rentals

MON-FRI 9-9
SAT 9-6 SUN 9-1

Prescription
Plans Honored



827-7107



RT. 23 (Next to A&P) FRANKLIN

Compliments Of

BOB & JEAN KEEGAN



**HAUCK'S
COLLECTIBLES**

*Elna and Richard Hauck
8 Rowe Pl., Bloomfield, N. J. 07003*

(201)743-1030

(201) 464-7235

THE MINERAL CABINET

NEW JERSEY MINERALS — WORLD WIDE SPECIMENS

P.O. BOX 814

NEW PROVIDENCE, N. J. 07974

COMPLIMENTS OF . . .

NANCY and BILL KULSAR

The SUSSEX COUNTY STATE BANK



"The BANK With the Personal Touch"

P.O. BOX 218 - 399 ROUTE 23
FRANKLIN, NEW JERSEY 07416

CHURCH STREET
VERNON, NEW JERSEY 07462

P.O. BOX 1070 - CLOVE ROAD
MONTAGUE, NEW JERSEY 07827

NEW BRANCH OFFICE - ON OR ABOUT NOV. 1ST

172 WOODPORT ROAD, SPARTA, N.J.

HOURS

LOBBY

Mon. 9 AM - 3 PM
Tues. 9 AM - 3 PM
Wed. 9 AM - 3 PM
Thur. 9 AM - 3 PM
Fri. 9 AM - 3 PM 6 PM - 8 PM
Sat. 9 AM - 12 Noon

DRIVE-IN

8 AM - 6 PM
8 AM - 6 PM
8 AM - 6 PM
8 AM - 8 PM
8 AM - 8 PM
9 AM - 3 PM

Member Federal Deposit Insurance Corporation

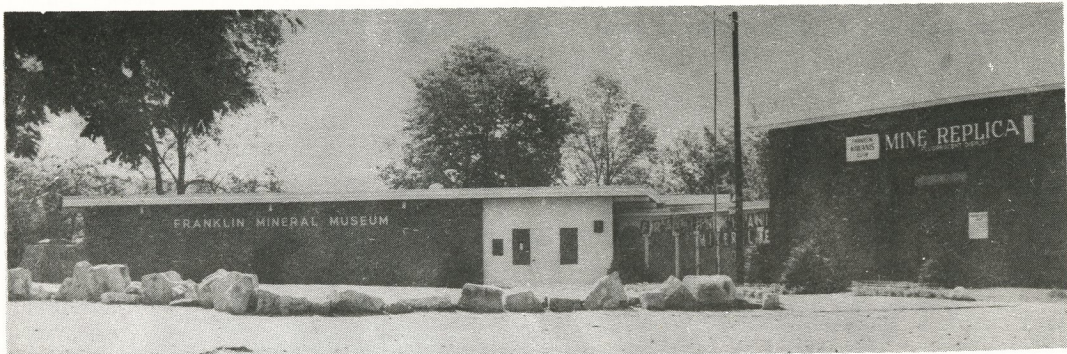


Photo by ERNIE DUCK

THE FRANKLIN MINERAL MUSEUM and MINE REPLICA

SEE THE WORLD FAMOUS FRANKLIN MINERALS, MINING HISTORY, FLUORESCENT DISPLAY AND A TRUE REPLICA OF THE MINING OPERATIONS HUNDREDS OF FEET BELOW THE SURFACE OF THE EARTH.

SALES AREA: — Mineral Lights, Specimens,
Souvenirs and jewelry available.

NEW OPERATING SCHEDULE

SEASON: APRIL 15th to NOVEMBER 15th

Closed Mondays, Tuesdays, Easter and Thanksgiving.

APRIL, MAY, JUNE, SEPTEMBER, OCTOBER and NOVEMBER.

Friday and Saturday 10:00 to 4:00 and Sunday 12:30 to 4:30.
Open Tuesday, Wednesday and Thursdays by Reservations Only.

JULY and AUGUST

Wednesday thru Saturday 10:00 to 4:00, Sunday 12:30 to 4:30.



*This is a Franklin Kiwanis sponsored,
non-profit, Community project.*

Gifts and donations to the Museum are tax deductible.

6B Evans Street, Box 54, Franklin, N. J. 07416
(201) 827-3481