
TREE IDENTIFICATION

HOLLY CAMPBELL

PUBLIC SERVICE ASSISTANT

UGA WARNELL SCHOOL OF FORESTRY AND NATURAL RESOURCES



WARNELL WOMEN'S LANDOWNER WORKSHOP

AUGUST 22, 2022

1



TREE IDENTIFICATION (ID) = SEARCHING FOR CLUES

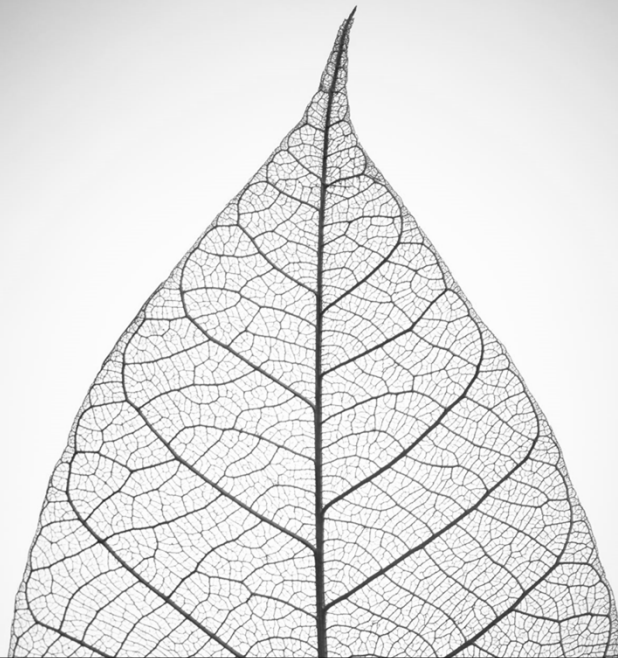
2

AUTUMN ID: LEAVES, FRUIT, BARK

3

ID OF TREES USING LEAVES

- Leaf type
- Leaf arrangement on stem
- Leaf margin
- Leaf surface



4

(1) TYPE: SIMPLE LEAF



SIMPLE LEAF: leaf with a single blade.

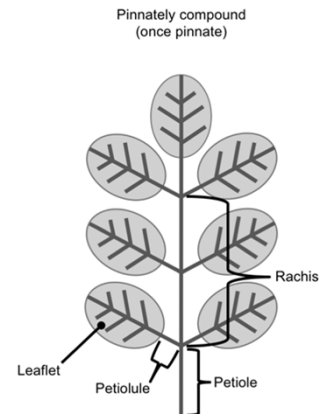
5

(2) TYPE: COMPOUND LEAF

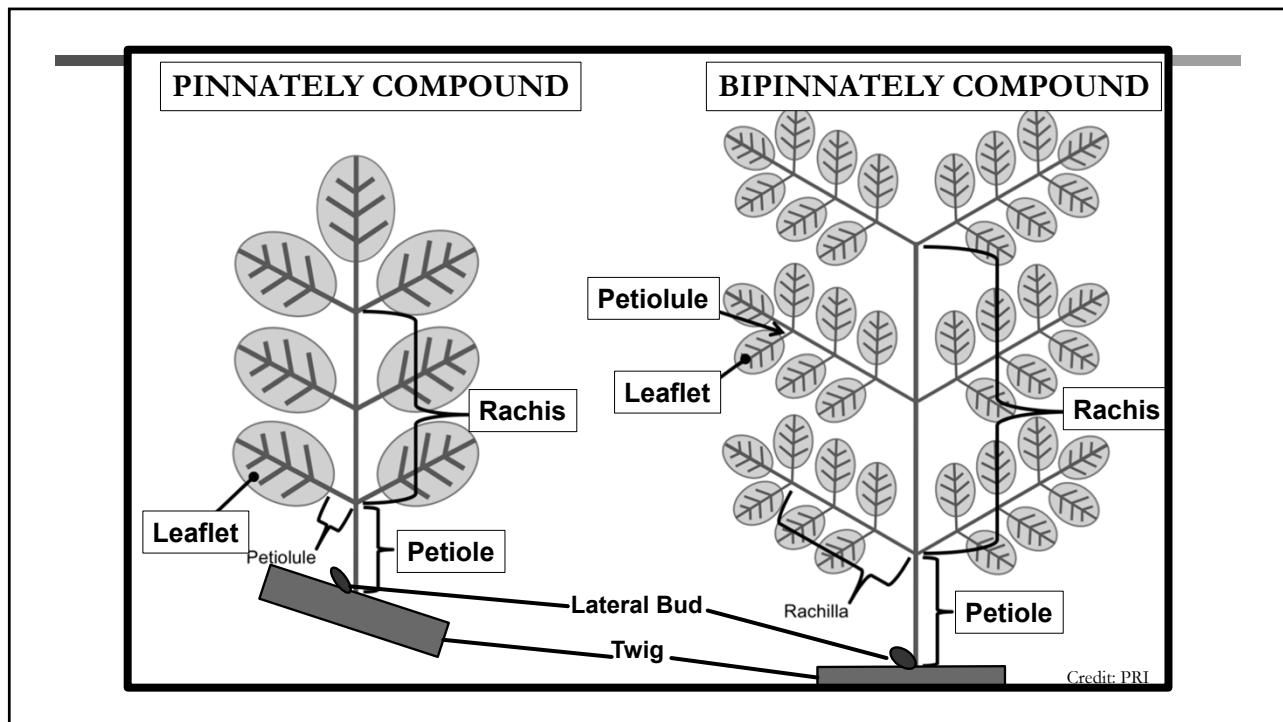
COMPOUND LEAF: leaf with ≥ 2 blades attached to common stalk

THREE MAIN COMPUND LEAF TYPES:

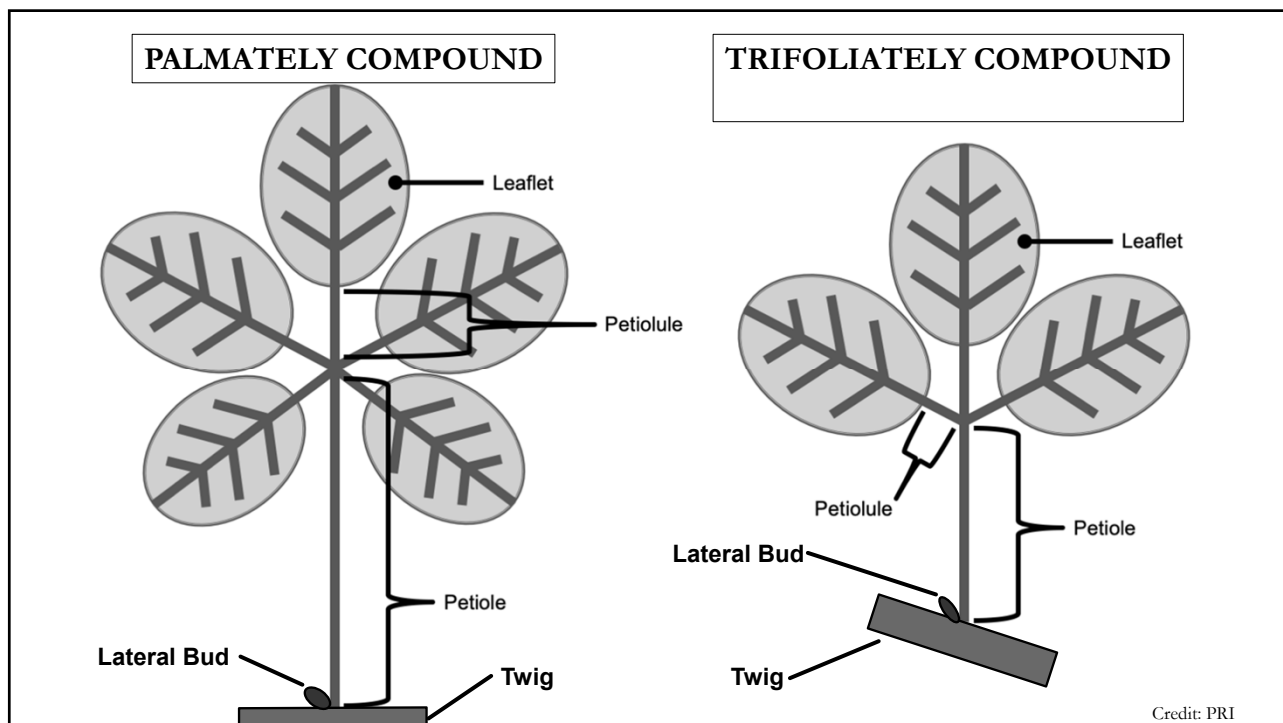
1. **Pinnately compound**
 - Pinnately compound (once pinnate)
 - Bipinnately compound (twice pinnate)
 - Tripinnately compound (thrice pinnate)
2. **Palmately compound**
3. **Trifoliolately compound**



6

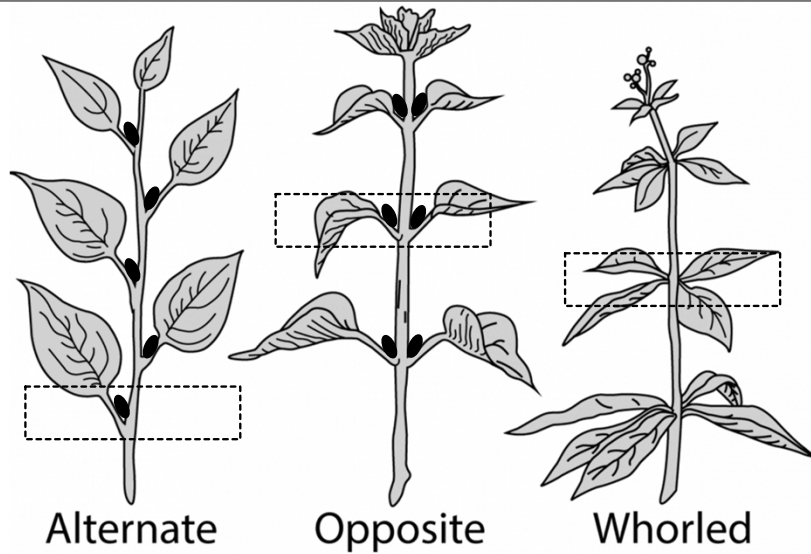


7



8

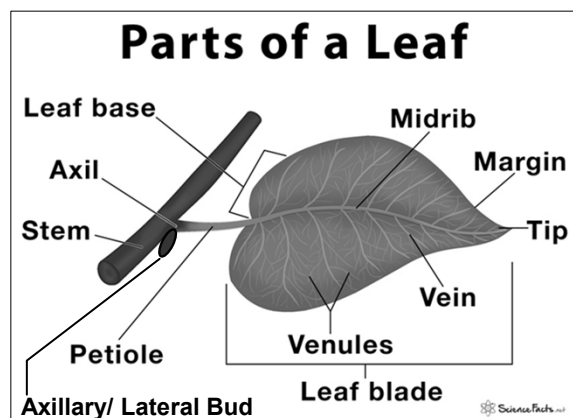
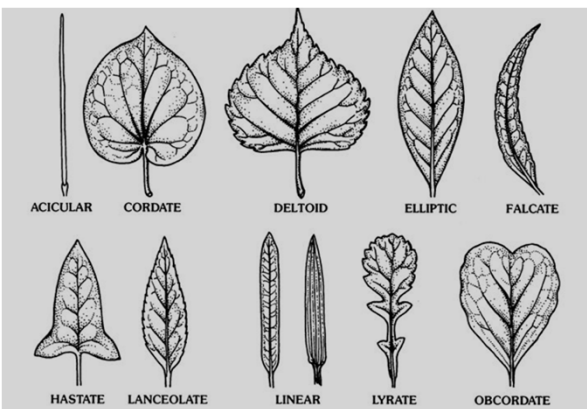
LEAF ARRANGEMENT ON STEM



Credit: Erika Hamden

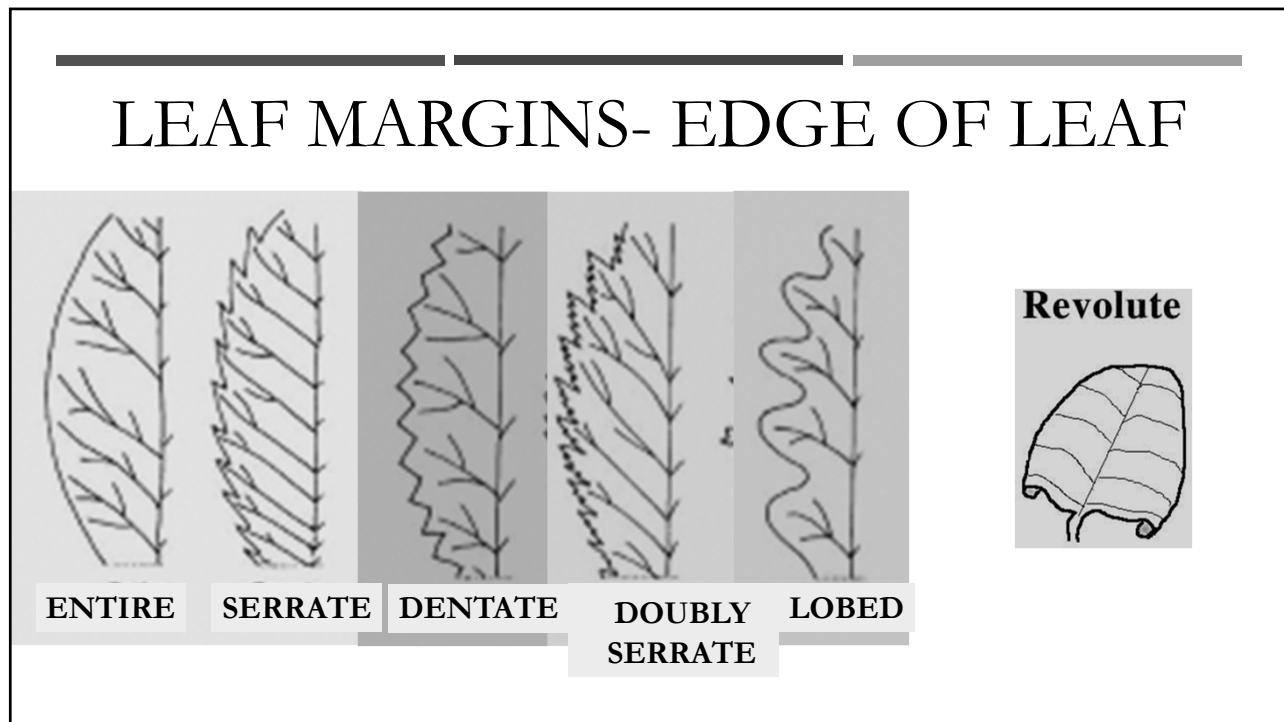
9

LEAF SHAPE - VARIABLE!

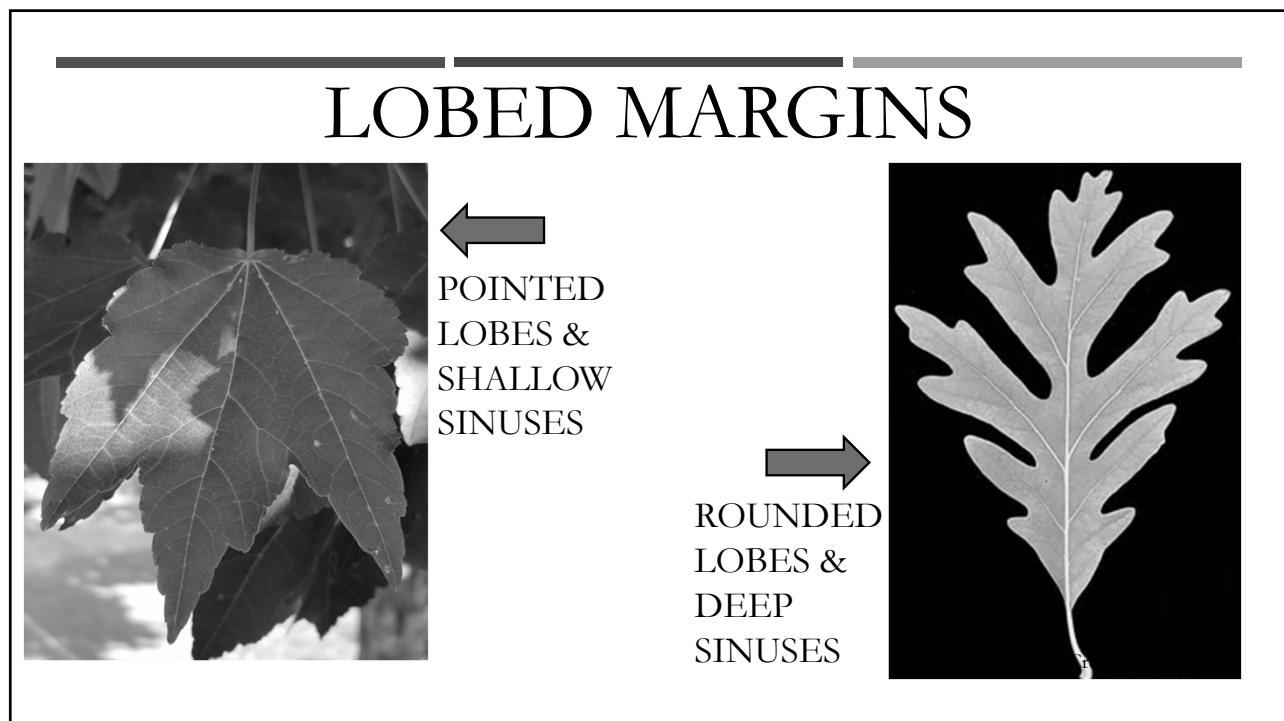


Much variation in tip, base, width, length, petiole, and more.

10



11



12

LEAF SURFACE



Scabrous: Rough surface



Pubescent: containing "hairs" (trichomes)



Glabrous: Without trichomes of any kind

13

FRUITS & CONES



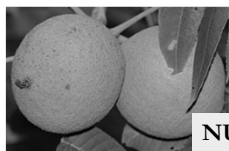
LEGUME



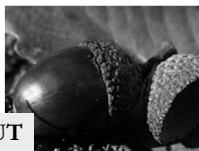
ACHENE



DRUPE



NUT



POME



SAMARA



FLESHY CONE



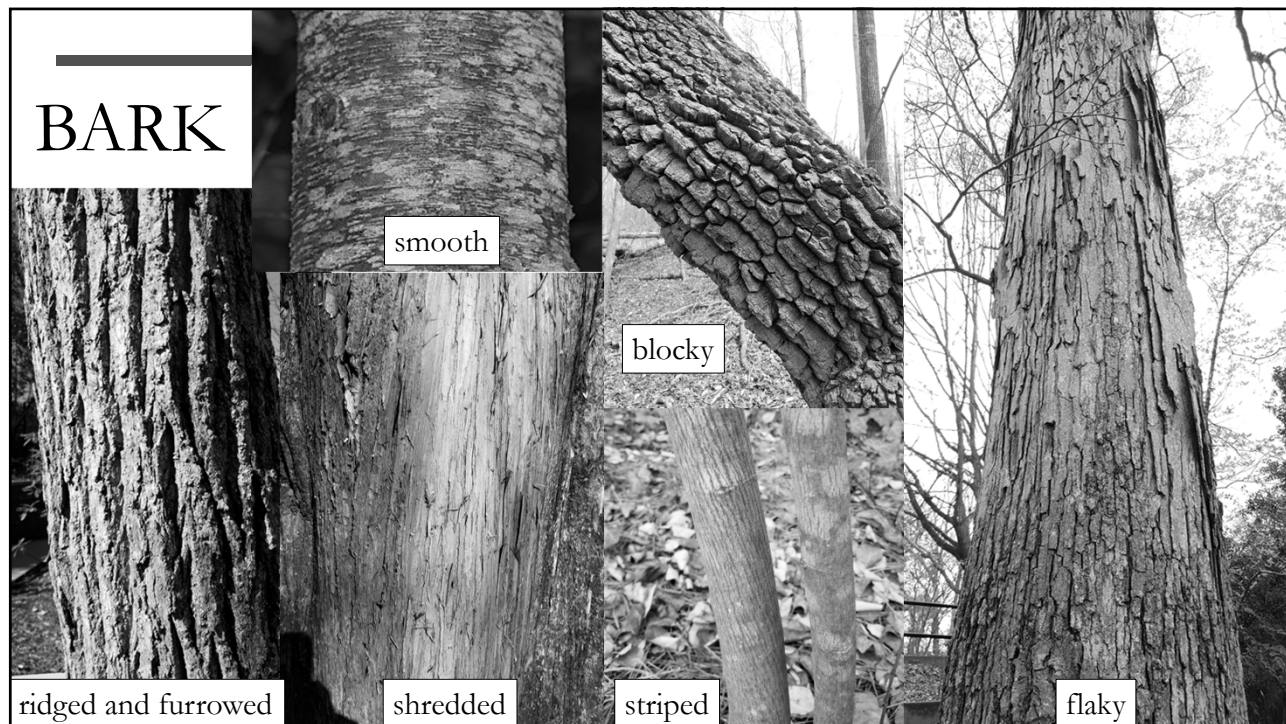
CONE



BERRY



14



15

RESOURCES & QUESTIONS:

Additional Resources:

Carolina Nature website: <https://www.carolinanature.com/trees/>

Native Trees of the Southeast by Kirkman et.al., 2007

Trees of Alabama by Samuelson, 2020

Identifying Selected Oak Trees in Georgia by Campbell and Gordon, 2020:

<https://bugwoodcloud.org/resource/files/18522.pdf>

Holly Campbell

UGA Warnell School of Forestry and Natural Resources

hollycam@uga.edu

706-363-0198



UNIVERSITY OF
GEORGIA
Warnell School of Forestry
& Natural Resources

16