

# Forbidden shells in the Philippines 2001 Fisheries Administrative Order 208.



CARDIIDAE  
*Hippopus cf. hippopus*



CARDIIDAE  
*Hippopus porcellanus*



CARDIIDAE  
*Tridacna crocea*



CARDIIDAE  
*Tridacna maxima*



CARDIIDAE  
*Tridacna squamosa*



CARDIIDAE  
*Tridacna gigas*



CASSIDAE  
*Cassis cornuta*



CASSIDAE  
*Cypraecassis rufa*



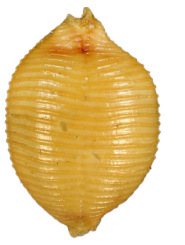
CASSIDAE  
*Echinophoria wyvillei*



CASSIDAE  
*Semicassis glabrata*



CYPRAEIDAE  
*Erosaria beckii*



CYPRAEIDAE  
*Ipsa childreni*



CYPRAEIDAE  
*Leporicypraea valentia*



CYPRAEIDAE  
*Lyncina aurantium*



CYPRAEIDAE  
*Lyncina leucodon leucodon*



CYPRAEIDAE  
*Lyncina porteri*



CYPRAEIDAE  
*Nesiocypraea teramachii*



CYPRAEIDAE  
*Notadusta martini*



CYPRAEIDAE  
*Palmulacypraea katsuae katsuae*



CYPRAEIDAE  
*Palmadusta saulae saulae*



CYPRAEIDAE  
*Perisserosa guttata guttata*



HARPIDAE  
*Morum grande*



HARPIDAE  
*Morum kurzi*



HIPPONICIDAE  
*Hipponix lissus*



NAUTILIDAE  
*Nautilus pompilius*  
and related species



OVULIDAE  
*Phenacovolva dancei*



PROPEAMUSSIIDAE  
*Amusium oblitteratum*



RANELLIDAE  
*Charonia tritonis*



ROSTELLARIIDAE  
*Rostellariella martinii*



STROMBIDAE  
*Tricornis thersites*



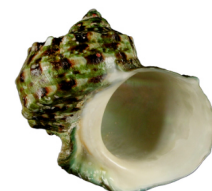
STROMBIDAE  
*Varicospira crispata*



TROCHIDAE  
*Trochus niloticus*



TURBINIDAE  
*Bolma girgylla*



TURBINIDAE  
*Turbo marmoratus*

CAPULIDAE  
*Separatista blainvilleana = Lippistes blainvilleana*

CERITHIIDAE  
*Clypeomorus aduncus*

GASTROCHAENIDAE  
*Eufistulana mumia*

HARPIDAE  
*Morum watsoni*

JANTHINIDAE  
*Recluzia lutea*

**1986 Administrative order 157.** Protects "Kapis" shells *Placuna placenta*. You need a permit, shells of less than 80 mm cannot be collected etc...

**Administrative order 158.** Prohibits gathering, taking, collecting and possessing for sale of mollusks belonging to the genera *Triton*, *Charonia* and *Cassis*.

**1990 Fisheries Administrative Order 168.** Prohibits gathering of wild *Tridacna derasa*, *T. gigas* and *Hippopus porcellanus*. One needs a permit from the regional Director to gather *Haliotis*, *Trochus*, *Voluta*, *Mitra*, *Strombus*, *Murex*, *Oliva*, *Conus*, *Cypraea*, *Lambis*, *Harpa*, *Tridacna*, *Hippopus*, *Pinctada*, *Pteria*, *Placuna*, *Amusium*, *Paphia*, *Katelsia*, *Atrina*, *Tapes*, *Anadara* and *Pharella*.

**2001 Fisheries Administrative Order 208.** Prohibits taking, gathering or causing to be taken 27 species of gastropods, 2 species of bivalves and 7 species of giant clams.

