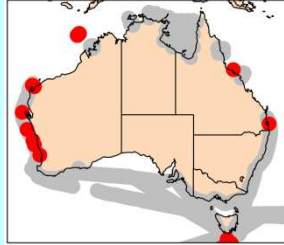


# *Oithona similis*

Claus, 1866



**Phylum** Arthropoda  
**Order** Cyclopoida  
**Family** Oithonidae

## Synonyms

*Oithona helgolandica* (Claus, 1863)

## Size

Female: 0.68-0.96 mm

## Genus notes

- Prosome short, oval to fusiform, 5 segmented
- Anterior cephalosome rounded or with 1 rostrum
- A1 slender, 2 geniculations in males
- Greatest width generally at posterior margin of cephalosome
- Posterior prosome margin rounded
- P5 represented by 2 lateral processes on pedigerous segment 5
- P6 reduced to lateral process on genital somite
- Urosome slender, 5 segmented in females, 6 segmented in males, genital somite longest, anterior section more or less swollen laterally
- Caudal rami with 1 dorsal, 4 apical and 1 outer marginal setae

## Female

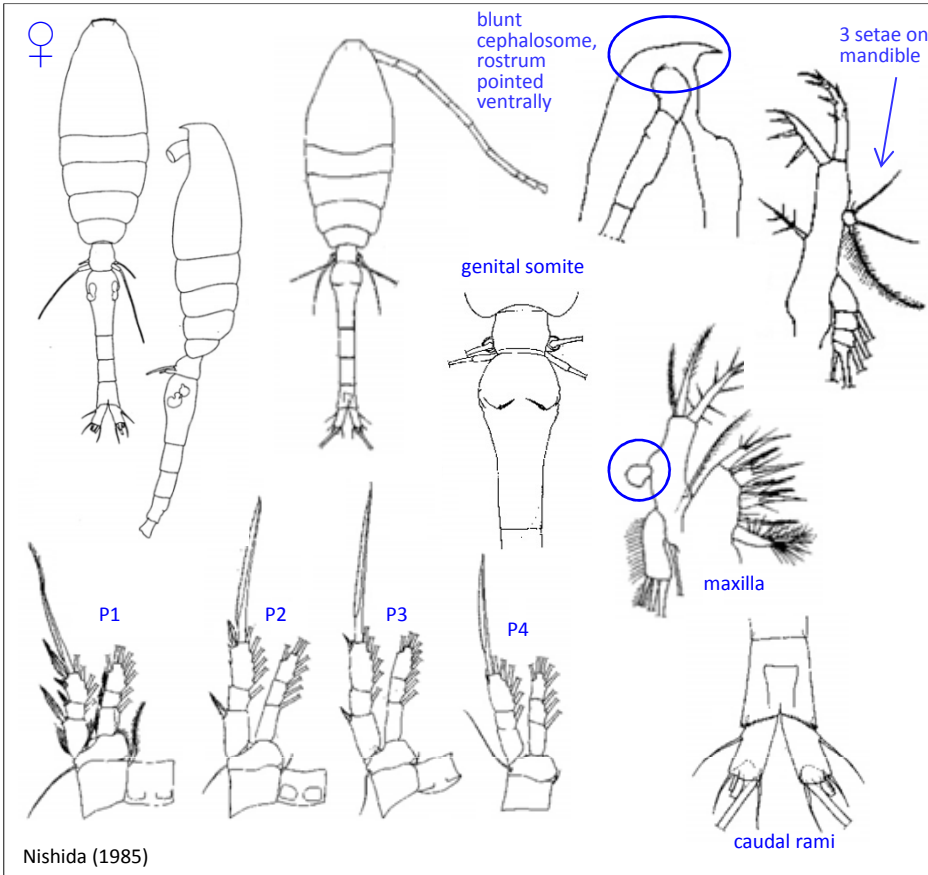
- Prosome elongate, ellipsoid in dorsal view, similar to *O. decipens* but more rounded
- A1 moderately long, 1.1-1.3x prosome length
- Rostrum rounded in dorsal view, strong and flat in lateral view
- Prosome length 2.3-2.6x width
- Prosome:Urosome 1:1 .1-1.4
- Urosome somites in length ratio 13:34:15:14:11
- Anterior third of genital somite swollen laterally

## Distribution

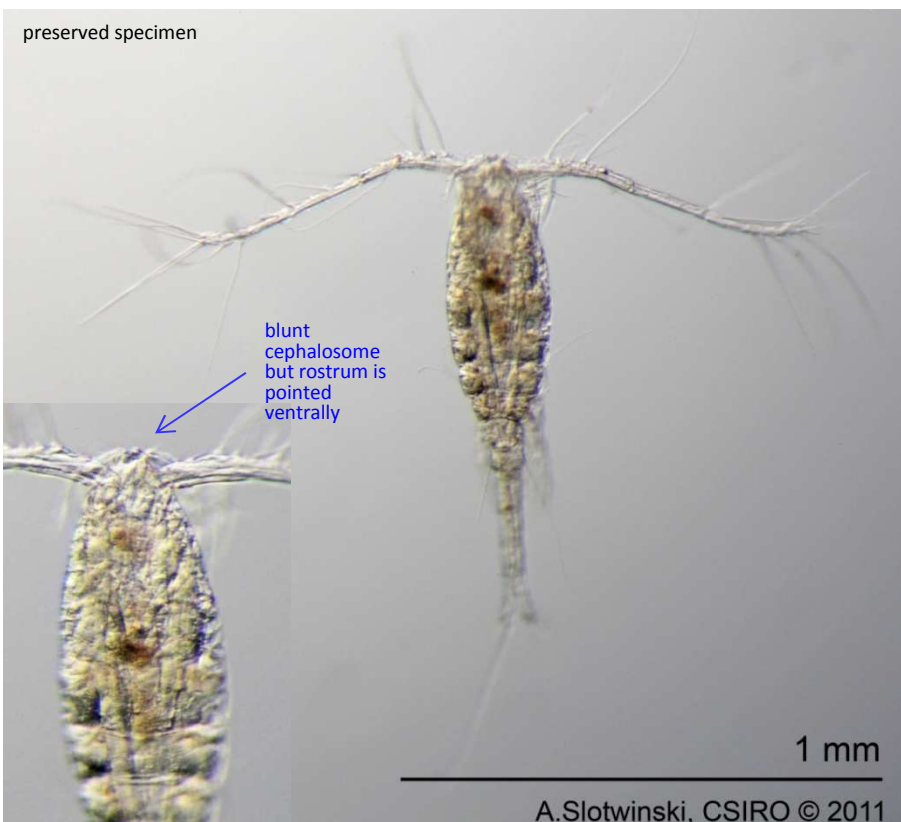
- Very widespread

## Ecology

- Varies a lot in size



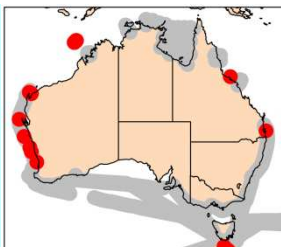
Nishida (1985)



A. Slotwinski, CSIRO © 2011

# *Oithona similis*

Claus, 1866



**Phylum**  
**Order**  
**Family**

Arthropoda  
Cyclopoida  
Oithonidae

## Male

- To be completed

## Source

Nishida (1985)

(Full reference available at  
<http://www.imas.utas.edu.au/zooplankton/references>)