

Development pattern of an infralittoral bryozoan community in the western Mediterranean Sea*

Eva Pisano & Massimo Boyer

Istituto di Anatomia Comparata dell' Università, Via Balbi, 5 – Genova, Italy

ABSTRACT: The developmental pattern on artificial substrates of a bryozoan community at 3 and 15 m water depth has been studied in the Ligurian Sea (Italy) for increasing periods of time (2 to 25 mo). A recruitment period – larval settlement and growth to saturation (increasing number of species and abundance) – is followed, after 12 mo, by a maturation period in which biotic interactions become predominant due to decreasing availability of primary substrate. During maturation, community structure changes considerably due to variation in quantitative relations among bryozoans; a definite replacement of species does not occur. Interactions between zoarial types can be traced back to several schemes resulting from combined reciprocal inhibition and enhancement actions. The community at 15 m depth does not show any difference in developmental pattern, but colonization is slower

INTRODUCTION

In the last few decades many studies of marine benthic communities have focused on the succession problem. Starting from objecting to the generalized deterministic classical model (Clements 1916, Margalef 1968, Odum 1969) a whole series of successional models has been proposed and described based upon specific research regarding marine communities (Sutherland 1974, 1978, Connell & Slatyer 1977, Osman 1977, Sutherland & Karlson 1977, Sousa 1979, 1980, Dean & Hurd 1980, Chalmer 1982, Greene & Schoener 1982). The definition and development of various models and the analysis of the mechanisms determining succession have gone hand in hand with an increasing knowledge of the structure and organization of marine benthic communities, especially behavioural strategies and interactions between species such as predation and competition (e.g. Dayton 1971, Stebbing 1973, Paine 1974, Connell 1975, Menge & Sutherland 1976, Jackson 1977a, 1979a, Buss 1979, Karlson & Jackson 1981, Rubin 1982).

The real meaning of the term 'succession' is being modified in the course of time to the extent that it now simply stands for the ensemble of progressive modifications observed in the community's composition

through time (Greene & Schoener 1982), and it is becoming a synonym for community development.

The problem has also been approached by various authors in a more typically descriptive way. The evolution of benthic populations on natural and artificial substrates was divided up into well-defined stages by determining the main categories of environmental factors governing the development process while looking for signs that the final stage or climax has been reached (Simon Papyn 1965, Bellan Santini 1970, Huvé 1970, Castric Fey 1974, Castric 1977). The importance of some physical and biotic factors in controlling community development has been underlined by research in caves (Vacelet 1976, Harmelin 1980, 1983), a relatively simple environment due to the predominating influence of a comparatively small number of environmental factors and their stability.

In most of the research on this topic artificial substrates have been employed (e.g. W.H.O.I. 1952, Osman 1977, Sutherland & Karlson 1977, Greene & Schoener 1984). The size of the substrate (e.g. Jackson 1977b, Osman 1977), its positioning and spacing (e.g. Vandermeulen & De Wreede 1982), the material used and the configuration of the substrate (e.g. Hart 1977, Balduzzi & Deandreis 1980, Riggio & Di Pisa 1981), and their influence on colonization and community development have also been studied.

The data discussed in this paper were collected during an experimental investigation of the develop-

* Presented as unpublished poster at the 19th European Marine Biology Symposium, Plymouth, England, 1984

ment of hard substrate benthic communities started in 1976 and still under way along a cliff of the Portofino Promontory (Sarà 1979, Pisano et al. 1980, Relini et al. 1983). In particular we consider here bryozoans settled on artificial substrates submerged at 2 different depths for periods ranging between 2 and 25 mo in order to attempt to establish the main colonization stages and to single out the possible variations with depth in community development.

Bryozoans play an important rôle in biological concretion processes (Harmelin 1980, Hong 1982), and they are one of the main components, both as to the number of species and to their abundance, of communities settling on artificial substrates in this biotope (Pisano 1979, Boyer 1984); for these reasons they strongly affect the structure of the whole community and probably reflect its main changes during developmental processes.

STUDY AREA AND METHODS

The field experiment was performed near the promontory of Portofino (Ligurian Sea: 44° 18' N, 9° 13' E), along a submerged cliff, a vertical puddingstone wall that faces northeast and is relatively sheltered from direct light and wave action. Water movement and light decrease with depth, while sedimentation rate increases, becoming important from 10 m depth downwards. In the first 10 m the cliff community is characterized by brown algae, especially *Dictyopteria membranacea*; below this level, the amount of this large alga decreases, and the calcareous biological concretion, built up mainly by encrusting red algae, serpulids and bryozoans, is much thicker. Further environmental details can be found in Sarà et al. (1978) and Pisano & Balduzzi (in press).

The bryozoan community on panels at Portofino has been previously studied and described in detail (Boyer 1984, Pisano & Balduzzi in press) to investigate both the structural variations along the cliff and the general colonization trend at the different depths. Here we focused on the developmental patterns at 3 and 15 m, that is in 2 quite differentiated ecological situations (Pisano & Balduzzi in press). We have attempted to describe the subsequent steps of colonization and community evolution, chiefly looking at the variations in quantitative relations between the mean bryozoan zoarial groups.

We studied 2 series of experimental plates (300 × 200 × 3 mm asbestos-cement panels) submerged at each depth for periods of 2, 3, 4, 6, 12 and 25 mo. For immersion periods shorter than 12 mo the panels were submerged in opposite seasons (summer and winter) in order to take into account seasonal effects on species

recruitment. The panels were placed on metal frames and set vertically at a distance of about 10 cm from the rocky surface with 1 side directly exposed to light and water movement and the other side shaded and sheltered. The 2 sides were analysed separately. The whole surface of each panel was examined under a dissecting microscope and every species was censused. Quantitative data were expressed in terms of species frequency: each panel side was divided into a grid of 100 unit surfaces, the frequency of each species representing the number of unit surfaces where that species was present.

We considered the following descriptive parameters of the community structure:

S = number of species;

N = abundance;

H = diversity index (Shannon-Weaver 1949);

E = evenness index (Daget 1976).

Cluster analysis (mean single bond method) was made on the similarity index value of Sorensen (1948) and Kulczynski (1927).

RESULTS

The bryozoan community of Portofino panels was found to be very rich in species, including 74 gymnolaemates, 70 of which were cheilostomates and 4 ctenostomates (Boyer 1984, Pisano & Balduzzi in press).

The cluster analysis (Fig. 1 A, B) shows a generally low affinity between substrate communities as immersion time increases and little compact grouping. A fair affinity is found at 3 m depth between communities of between 4 and 12 mo (with some differentiation between the exposed and the shaded side), leading to the identification of a fairly homogeneous group from which the 25 mo community stands out, especially from the quantitative viewpoint. This does not, however, apply at the greater depth where the analysis brings to light no large structural variation in the 12 to 25 mo period.

The trends of the community structure's descriptive parameters (Fig. 2A, B) make it possible to identify some main development steps. At 3 m depth, the number of species (S) and abundance (N) tended to stabilize approximately at their maximum values after having varied greatly in the first 4 mo. The number of species reached its saturation level at 12 mo, while abundance continued to increase slightly. Diversity and evenness curves also start to stabilize from the 6th month. At the greater depth all parameters considered varied substantially up to 12 mo; no tendency towards saturation was observed especially in the values of the shaded sides of the substrates. In particular, species

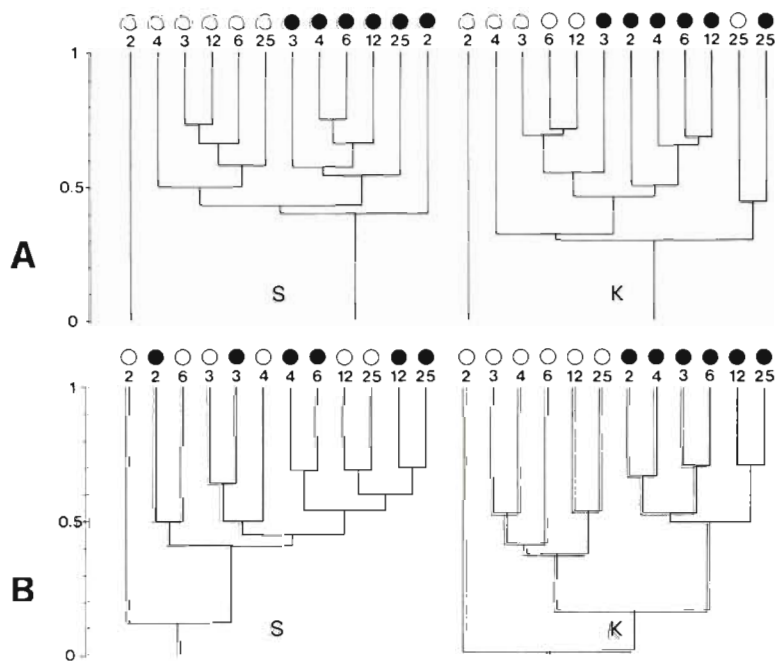


Fig. 1. Similarity dendrograms for panels submerged for periods of 2 to 25 mo at 3 m depth (A) and 15 m depth (B). Affinity between panel communities is based on Sorensen's qualitative index (S) and Kulczynski's quantitative index (K). Numbers indicate submersion times in months. Open circles: exposed side of panels; filled circles: sheltered side

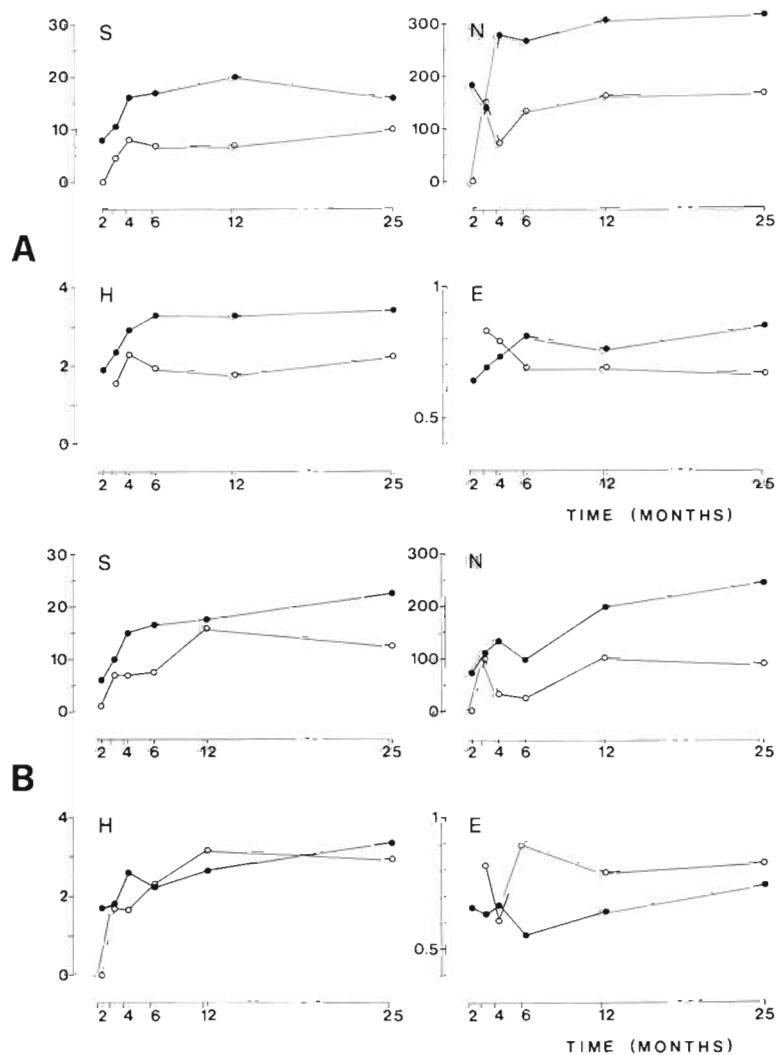


Fig. 2. Trend through time of species number (S), abundance (N), diversity (H) and evenness (E), at 3 m depth (A) and 15 m depth (B). Open circles: exposed side of panels; filled circles: sheltered side

number and abundances clearly continued to increase between the 12th and 25th month.

The probability for each bryozoan species – as for other sessile organisms – of survival in a given environment is strongly conditioned by the general organization (shape, size, pattern of growth) of the colony (Stach 1936, Cheetham 1963, 1966, Lagaaij & Gautier 1965, Harmelin 1976, Jackson 1979b). Thus we believe that variations in the relative abundances of zoarial types in a developing community can indicate modifications of the environment corresponding with different developmental stages.

We have taken into consideration the following zoarial types, including most of the species present at Portofino.

Thin membraniporiform type. This includes species with membraniporiform zoary (Stach 1936), unilaminar, thin, attached to the substrate, mainly settling on flat and smooth supports such as algal fronds. Species of this group found on our panels are listed in Table 1.

Table 1. Bryozoan species of thin membraniporiform type found on panels

Spiralaria gregaria (Heller 1867)
Callopora dumerilii (Audouin 1826)
Crassimarginatella maderensis (Waters 1898)
Mollia rosselii (Audouin 1826)
Collarina balzaci (Audouin 1826)
Cribrilina punctata (Hassall 1841)
Cribrilaria innominata (Couch 1844)
Puellina gattyae (Landsborough 1852)
Figularia figularis (Johnston 1847)
Reptadeonella violacea (Johnston 1847)
Codonellina montferrandi (Audouin 1903)
Porella concinna (Busk 1854)
Smittoidea reticulata (MacGillivray 1842)
Prenantia cheilostoma (Manzoni 1869)
Escharella rylandi Geraci 1974
Cribellopora trichotoma (Waters 1918)
Hippopodinella lata (Busk 1856)
Microporella ciliata (Pallas 1766)
Chorizopora brongniartii (Audouin 1826)
Haplopoma bimucronatum (Moll 1803)
Fenestulina malusii (Audouin 1826)

Thick membraniporiform type. This includes species with membraniporiform zoary of greater thickness than the foregoing and having a greater morphological plasticity with the possibility of forming several superimposed layers or of lifting the colony edges above the substrate, so as to adapt themselves to irregular surfaces (Table 2).

Creeping type. This includes species whose colonies form ramified uniseriate chains with the capacity to settle and grow on many kinds of support (Table 3).

Tuft-like type. Includes erect, ramified and flexible

Table 2. Bryozoan species of thick membraniporiform type found on panels

Umbonula ovicellata Hastings 1944
Escharoides coccinea (Abildgaard 1806)
Watersipora subovoidea (D'Orbigny 1852)
Watersipora complanata (Norman 1864)
Pentapora ottomulleriana (Moll 1803)
Parasmittina rouvillei (Calvet 1902)
Schizoporella dunkeri (Reuss 1848)
Schizoporella longirostris Hincks 1886
Schizomavella auriculata (Hassall 1842)
Schizomavella auriculata cuspidata (Hincks 1880)
Schizomavella linearis (Hassall 1841)
Schizomavella linearis mamillata Hincks 1880
Schizomavella hastata (Hincks 1862)
Schizomavella discoidea (Busk 1859)
Schizobrachiella sanguinea (Norman 1868)
Escharina vulgaris (Moll 1803)
Schizotheca fissa (Busk 1856)

Table 3. Bryozoan species of creeping type found on panels

Aetea anguina (Linnaeus 1758)
Aetea sica (Couch 1844)
Aetea truncata (Landsborough 1852)
Beania mirabilis (Johnston 1839)

Table 4. Bryozoan species of tuft-like type found on panels

Caberea boryi (Audouin 1826)
Scrupocellaria delilii (Audouin 1826)
Scrupocellaria reptans (Linnaeus 1758)
Scrupocellaria scrupea Busk 1851
Scrupocellaria scruposa (Linnaeus 1758)
Bicelliaria ciliata (Linnaeus 1758)
Bugula aquilirostris Ryland 1960
Bugula gautieri Ryland 1961
Bugula calathus calathus (Ryland 1968)
Bugula flabellata (Thompson in Gray 1847)
Bugula cfr. simplex Hincks 1886
Bugula spicata Hincks 1886

zoaries needing no large surfaces on which to settle and grow (Table 4).

At 3 m depth (Fig. 3A) during the initial colonization stage (2 and 3 mo) membraniporiform types are predominant, whereas creeping and tuft-like types are present chiefly from the 4th month. A drastic change in the zoarial spectrum occurs between the 12th and 25th month due to the dramatic decrease of membraniporiform types, especially thin membraniporiform bryozoans, and the considerably increased number of tuft-like type.

At 15 m depth (Fig. 3B) the situation is quite different, especially on long-term immersed substrates; the most striking fact is the small incidence of tuft-like

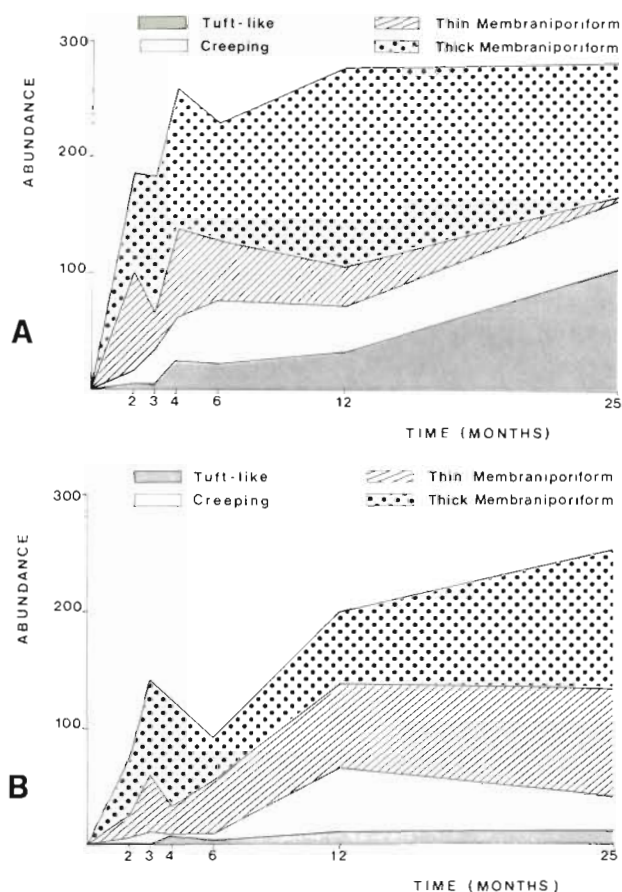


Fig. 3. Variation in time in main zoarial types abundance (on sheltered side of panels) at 3 m depth (A) and 15 m depth (B)

zoaries during all 25 mo, and the progressively growing numbers of the 2 membraniporiform types.

DISCUSSION

The bryozoan community development pattern derived from our experiment includes the following 2 main steps.

Recruitment period. This is characterized by larval settlement and growth of species able to fix onto the panel surface, up to saturation of species number (S) and abundance (N), coinciding with almost complete occupation of the primary space.

During an initial recruitment stage (first 4 mo) the species settle and grow at a fairly high rate causing strong variations in the community structure, as can be observed from the trend of the curves S, N, H and E (Fig. 2A) as well as from the cluster analysis (Fig. 1A). Membraniporiform zoarial types prevail during this initial stage (Fig. 3A), favoured by the availability of extensive free and smooth surfaces on which they are fast-growing.

The more advanced stage of the recruitment period is characterized by a more modest variation in the community structure, up to the saturation of the number of species and abundance and to the stabilization of diversity and evenness. Most of the available area will be occupied by thick membraniporiform species now starting to predominate over thin membraniporiform types; creeping species are more abundant.

While at 3 m depth the recruitment period can be deemed completed after 12 mo, at 15 m it was not completed even at the end of our experiment.

With reference to other colonization experiments carried out in the Western Mediterranean Sea for similar periods, our recruitment period may correspond to what Huvé (1970) calls the '*étape de colonisation*' in the re-establishment of an infralittoral algal community in the gulf of Marseilles. A certain likeness is also found with the '*phases de recrutement*' and '*d'installation*' described by Castric Fey (1974) and Castric (1977) for a community in the English Channel, where in 11 mo about 75% of the species growing on the surrounding rocks settled on the artificial substrates.

During this whole period, community development is mainly controlled by physical factors (Castric 1977) and is not only affected by seasonal phenomena but is also strongly conditioned by the presence of a newly available settling space (Pisano & Balduzzi, in press).

Maturation period. This is only observed at the shallower depth (3 m). It starts after about 12 mo, when substrate cover reaches values of about 100% (Pisano et al. 1980) and is characterized by the increasing predominance of biotic interactions due to the decreasing availability of primary substrate. Replacements of species are seldom observed (Boyer 1984, Pisano & Balduzzi in press) and no pioneer species, as defined by Castric (1977), are known, while the community structure changes considerably with variations in quantitative relations between bryozoans. Substantial quantitative reductions affect the thick and, especially, the thin membraniporiform zoarial types (Fig. 3A), which are more fiercely involved in the competition for space. Furthermore, increase of tuft-like colonies indicates modifications occurring on panel surfaces and within the community which is now in a more advanced developmental stage.

The interactions between the various zoarial types, inferred from related quantitative variations and from observations of the behaviour of the various species, especially regarding overgrowth (Boyer 1984), are schematically outlined in Fig. 4. These are essentially the inhibition of thin membraniporiform zoarial type (slowing down of the settlement rate due to modifications at substrate level and suppression of already settled colonies due to overgrowth, especially by thick

- Castric Fey, A. (1974). Les peuplements sessiles du benthos rocheux de l'archipel de Glénan (sud Bretagne). *Ecologie descriptive*. Thèse Fac. Sci. Univ. Paris, p. 1-133
- Chalmer, P. N. (1982). Settlement pattern of species in a marine fouling community and some mechanisms of succession. *J. exp. mar. Biol. Ecol.* 58 (1): 73-86
- Cheetham, A. H. (1963). Late Eocene zoogeography of the eastern Gulf Coast region. *Mem. geol. Soc. Am.* 91: 1-113
- Cheetham, A. H. (1966). Cheilostomatous Polyzoa from the Upper Bracklesham Beds (Eocene) of Sussex. *Bull. Br. Mus. nat. Hist. (Geol.)* 13 (1): 1-115
- Clements, F. E. (1916). *Plant succession*. Carnegie Inst. Washington Pub. 242: 1-512
- Connell, J. H. (1975). Some mechanisms producing structure in natural communities: a model and evidence from field experiments. In: Cody, M., Diamond, J. (ed.) *Ecology and evolution of communities*. Harvard Univ. Press, Cambridge, Massachusetts, p. 460-490
- Connell, J. H., Slatyer, R. O. (1977). Mechanisms of succession in natural communities and their rôle in community stability and organization. *Am. Nat.* 111: 1119-1144
- Daget, J. (1976). Les modèles mathématiques en écologie. *Collection d'écologie*, No. 8, Masson, Paris, p. 1-172
- Dayton, P. K. (1971). Competition, disturbance, and community organization: the provision and subsequent utilization of space in a rocky intertidal community. *Ecol. Monogr.* 41: 351-389
- Dean, T. A., Hurd, L. E. (1980). Development in an estuarine fouling community: the influence of early colonists on later arrivals. *Oecologia (Berl.)* 46: 295-301
- Greene, C. H., Schoener, A. (1982). Succession on marine hard substrata: a fixed lottery. *Oecologia (Berl.)* 55: 289-297
- Greene, C. H., Schoener, A. (1984). Multivariate analysis of three-dimensional data in the study of succession in marine fouling communities. In: 6th International Congress on Marine Corrosion and Fouling. Marine Biology, Athens, Greece, Sept. 1984, p. 221-235
- Harmelin, J. G. (1976). Le sous-ordre des Tubuliporina (Bryozoaires Cyclostomes) en Méditerranée. *Ecologie et systématique*. *Mem. Inst. oceanogr. Monaco* 10: 1-326
- Harmelin, J. G. (1980). Etablissement des communautes de substrats durs en milieu obscur. Résultats préliminaires d'une expérience à long terme en Méditerranée. *Memorie Biol. mar. Oceanogr.* 10 suppl.: 29-52
- Harmelin, J. G. (1983). Etablissement des facies à Bryozoaires dans les milieux cryptiques méditerranéens. *Rapp. Comm. int. Mer Médit.* 28 (3): 259-261
- Hart, D. D. (1977). The response of stream benthic invertebrate communities to microspatial substrate complexity. *Bull. ecol. Soc. Am.* 58: 37
- Hong, J. S. (1982). Contribution à l'étude des peuplements d'un fond de concretionnement coralligène dans la région Marseillaise en Méditerranée nord-occidentale. *Bull. KORDI (Korla Ocean Research & Development Institute)* 4: 27-51
- Huvé, M. P. (1970). Recherches sur la g n se de quelques peuplements algaux marins de la roche littorale dans la r gion de Marseille. Th se Fac. Sci. Univ. Paris, p. 1-479
- Jackson, J. B. C. (1977a). Competition on marine hard substrata: the adaptive significance of solitary and colonial strategies. *Am. Nat.* 111: 743-767
- Jackson, J. B. C. (1977b). Habitat area, colonization, and development of epibenthic community structure. In: Keegan, B. F., Ceidigh, P. O., Boaden, P. J. S. (ed.) *Biology of benthic organisms*. Pergamon Press, London, p. 349-358
- Jackson, J. B. C. (1979a). Overgrowth competition between encrusting Cheilostome Ectoprocts in a Jamaican cryptic reef environment. *J. Anim. Ecol.* 48: 805-823
- Jackson, J. B. C. (1979b). Morphological strategies of sessile animals. In: Larwood, G., Rosen, B. R. (ed.) *Biology and systematics of colonial organisms*. Academic Press, London, p. 499-555
- Karlsun, R. H., Jackson, J. B. C. (1981). Competitive networks and community structure: a simulation study. *Ecology* 62 (3): 670-678
- Kulczynski, S. (1927). Die Pflanzenassoziationen der Pieninen. *Bull. Intern. Acad. Polan. Sci. Lett. classe Sci. Math. Nat., sez. B, Sci. Nat. suppl.* 2: 57-203
- Lagaaj, R., Gautier, Y. V. (1965). Bryozoan assemblages from marine sediments of the Rh ne delta, France. *Micropaleontology* 11 (1): 39-58
- Margalef, R. (1968). *Perspectives in ecological theory*. Univ. Chicago Press, Chicago
- Menge, B. A., Sutherland, J. B. (1976). Species diversity gradients: synthesis of the rôles of predation, competition, and temporal heterogeneity. *Am. Nat.* 110 (973): 351-369
- Odum, E. P. (1969). The strategy of ecosystem development. *Science* 164: 262-270
- Osman, R. W. (1977). The establishment and development of a marine epifaunal community. *Ecol. Monogr.* 47: 37-63
- Paine, R. T. (1974). Intertidal community structure. Experimental studies on the relationship between a dominant competitor and its principal predator. *Oecologia (Berl.)* 15: 93-120
- Pisano, E. (1979). Osservazioni preliminari sui Briozoi di substrati artificiali immersi nel piano infralitorale del promontorio di Portofino (Mar Ligure). *Atti Soc. Tosc. Sci. Nat., Mem., ser. B, suppl.*: 320-322
- Pisano, E., Balduzzi, A. (in press). Bryozoan colonization along an infralittoral cliff in the Ligurian Sea (North-Western Mediterranean). In: Nielsen, C., Larwood, G. P. (ed.) *Bryozoa: Ordovician to recent*. Olsen & Olsen, Fredensborg
- Pisano, E., Bianchi, C. N., Relini, G. (1980). Inseidamento su substrati artificiali lungo la falesia di Portofino (Mar Ligure): metodologie e dati preliminari. *Memorie Biol. mar. Oceanogr. suppl.* 10: 269-274
- Relini, G. (1980). Inseidamento di organismi marini di substrato duro in ambienti portudi mediterranei. *Memorie Biol. mar. Oceanogr., Suppl.* X: 61-70
- Relini, G., Bianchi, C. N., Matricardi, G., Pisano, E. (1983). Research in progress on colonization of hard substrata in the Liguria Sea. In: C.I.E.S.M. (ed.) *Journ e d'etudes sur les aspects scientifiques concernant les r cifs artificiels et le mariculture suspendre*. G. Comman, Monaco, p. 77-78
- Riggio, S., Di Pisa, G. (1981). The patterns of settlement of benthic Harbour Communities in relation to substratum geometry. *Rapp. Comm. int. Mer M dit.* 27 (2): 177-178
- Rubin, J. A. (1982). The degree of intransitivity and its measurement in an assemblage of encrusting Cheilostome Bryozoa. *J. exp. mar. Biol. Ecol.* 60 (2): 119-128
- Sar , M. (1979). Biocenosi bentoniche di substrato duro: studio dei popolamenti e possibilit  di intervento per l'incremento e la gestione delle risorse biologiche. In: CNR (ed.) *Atti Conv. Sci. Naz. P. F. Oceanografia e Fondi Marini*, Vol. 1. Roma, p. 135-144
- Sar , M., Balduzzi, A., Boero, F., Pansini, M., Pessani, D., Pronzato, R. (1978). Analisi di un popolamento bentonico di falesia del Promontorio di Portofino. *Dati preliminari*. *Boll. Mus. Ist. Biol. Univ. Genova* 46: 119-137
- Shannon, C. E., Weaver, W. (1979). *The mathematical theory of communication*. Univ. of Illinois Press, Urbana, p. 1-117
- Simon Papyn, L. (1965). Installation exp rimentale du

- benthos sessile des petits substrats durs de l'étage circalittoral en Méditerranée. Recl. Trav. Stn. mar. Endoume 39 (55): 53–94
- Sorensen, T. (1948). A method of establishing groups of equal amplitude in plant sociology based on similarity of species content. Biol. Skr. 5: 1–34
- Sousa, W. P. (1979). Experimental investigations of disturbance and ecological succession in a rocky algal community. Ecol. Monogr. 49 (3): 227–254
- Sousa, W. P. (1980). The responses of a community to disturbance: the importance of successional age and species life histories. Oecologia (Berl.) 45: 72–81
- Stach, L. W. (1936). Correlation of zoarial form with habitat. J. Geol. 44: 60–65
- Stebbing, A. R. D. (1973). Competition for space between the epiphytes of *Fucus serratus* L. J. mar. biol. Ass. U. K. 53: 247–261
- Sutherland, J. P. (1974). Multiple stable points in natural communities. Am. Nat. 108: 859–873
- Sutherland, J. P. (1978). Functional rôles of *Schizoporella* and *Styela* in the fouling community at Beaufort, North Carolina. Ecology 59 (2): 257–264
- Sutherland, J. P. (1981). The fouling community at Beaufort, North Carolina, USA: a study in stability. Am. Nat. 118 (4): 499–519
- Sutherland, J. P., Karlson, R. H. (1977). Development and stability of the fouling community at Beaufort, North Carolina. Ecol. Monogr. 47: 425–446
- Vacelet, J. (1976). Les Spongiaires des grottes sous-marines obscures de la Méditerranée et des régions tropicales. Pubbl. Staz. zool. Napoli 40: 506–515
- Vandermeulen, H., De Wreede, R. E. (1982). The influence of orientation of an artificial substrate (transite) on settlement of marine organisms. Ophelia 21 (1): 41–48
- W.H.O.I. (1952). Marine fouling and its prevention. U. S. Naval Inst. Annapolis, Maryland

This paper was submitted to the editor; it was accepted for printing on July 29, 1985